

# Installation Instructions

**INSTALLATION MUST BE PERFORMED  
BY  
QUALIFIED EQUISERV PERSONNEL ONLY**

## INSTALLATION OVERVIEW:

These instructions are for the installation of an Off-the-Shelf Oki B4250 printer for all OBIS Analyzers, Virginia SIS Machine Bar 97 Analyzers. The kit contains Printer Utility Disk, which configures the Oki B4250 printers to work correctly with SIS analyzers.

**NOTE:** *A SEPARATE SHEET METAL DRAWER KIT (EAK0226L00A) MAY BE REQUIRED, WHEN REPLACING AN EXISTING OKIDATA 6E, 10E OR 14E PRINTER WITH AN OKI B4250 PRINTER. ORDER AND INSTALL THIS KIT FIRST, BEFORE CONTINUING. THIS KIT IS NOT REQUIRED IF AN OKIDATA B4200 OR B4250 PRINTER WAS PREVIOUSLY INSTALLED.*

**NOTE:** *THE OKIDATA B4250 PRINTER IS ONLY APPROVED FOR THE FOLLOWING STATE EMISSIONS PROGRAMS AND IS COMPATIBLE WITH ONLY THE APPLICABLE SOFTWARE VERSIONS BELOW:*

OBIS North Carolina	Software Version 404 or Higher
OBIS Pennsylvania	Software Version 403 or Higher
OBIS Texas	Software Version 462 or Higher
Virginia BAR-97	Software Version 4.12 or Higher
California BAR-97	Software Version 0310 or Higher
Texas ASM BAR-97	Software Version 0415 or Higher
New Jersey BAR-97	Software Version 4.13 or higher
North Carolina BAR-97	Software Version 0004 or Higher
Ontario BAR-97 (GAS)	Software Version 4.18 or higher
Ontario BAR-97 (HD)	Software Version 5.0 or higher
Pennsylvania BAR-97	Software Version 9829 or higher Must be Service Version 2.32 or higher

## PARTS LIST:

PART NUMBER	DESCRIPTION	QTY
3-03306A20	Oki B4250 LED Printer	1
3-13926AUSD3	Printer Utility Disk	1

**REQUIRED TOOLS:** \_\_\_\_\_

- Complete Tool Kit

**INSTALLATION INSTRUCTIONS:** \_\_\_\_\_

See Table below for analyzer installation instructions:

<b>All OBIS Analyzers</b>	<b>Installing Oki B4250 Printer on OBIS</b>	<b>Page 3</b>
<b>SIS Machine (Win 95 or Win 98 OS)</b>	<b>Installing Oki B4250 Printer on SIS Machine Analyzers with WIN 9X OS  (Ontario GAS and HD; VA)</b>	<b>Page 6</b>
<b>SIS (BAR 97); DOS 6.22 for NJ; PA; TX, NC, CA (BAR 97 ONLY)</b>	<b>Installing Oki B4250 Printer on SIS Machine Analyzers with DOS 6.22 OS (BAR 97)  NJ; PA; TX, NC, CA (BAR 97 ONLY)</b>	<b>Page 7</b>
<b>SIS Machine Public Drive Engine Analyzer Option</b>	<b>Installing Oki B4250 Printer on SIS Machine with Sun Machine Software Version 3.3 or 5.0 with WIN 9X OS</b>	<b>Page 8</b>
<b>SIS Machine Public Drive Engine Analyzer Option</b>	<b>Installing Oki B4250 Printer on SIS Machine with Sun Machine Software Version 3.3 with DOS OS</b>	<b>Page 10</b>
<b>MCS 2500 Pep Boys</b>	<b>Installing OKI B4250 Printer on MCS 2500 Pep Boys</b>	<b>Page 11</b>
<b>Sun Machine (Win 95 or Win 98 OS)</b>	<b>Installing Oki B4250 Printer on Sun Machine Analyzers with WIN 9X OS</b>	<b>Page 12</b>
<b>Sun Machine (DOS OS)</b>	<b>Installing Oki B4250 Printer on Sun Machine Analyzers with DOS 6.22 OS</b>	<b>Page 14</b>
<b>All Analyzers</b>	<b>Printer Installation Verification</b>	<b>Page 15</b>
<b>All Analyzers</b>	<b>Printer Troubleshooting</b>	<b>Page 16</b>

**INSTALLING OKI B4250 PRINTER on OBIS:** \_\_\_\_\_**Installing the Printer Driver**

1. Turn computer on, and log in as **PC**. Do not enter in a password.
2. Select **Start** ⇒ **Settings** ⇒ **Printers**. Right click on the current printer icon. Click on **<Delete>**.
3. Click on **<Yes>** to delete the current printer. Click on **<OK>** to confirm deletion.
4. Unplug the AC cord and USB cable from the defective printer. Remove the defective printer.
5. Unpack the new Oki B4250 printer from the box, and follow the Okidata instructions for proper hardware setup (For software setup, see step 6 below). Make sure that you remember to plug the AC plug and USB cable back into the new printer and turn on the power switch.

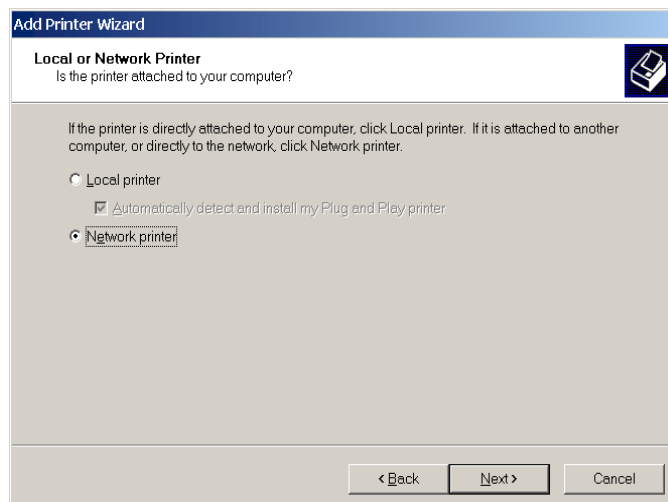
**NOTE:** *IF WINDOWS PLUG AND PLAY FINDS THE NEW PRINTER, CLICK ON THE CANCEL BUTTON AND CLOSE THE WINDOW*

6. Double click on the **"ADD PRINTER"** icon. The **"Welcome to the Add Printer Wizard"** will be displayed as shown in Figure1. Click on **<NEXT>** to continue.



**Figure 1, Add Printer Wizard**

7. The second page of the **"ADD PRINTER WIZARD"** will be displayed, as shown in Figure 2. Click on **"LOCAL PRINTER"**. Uncheck the **"Automatically detect and install my Plug and Play printer"**. Click on **<NEXT>** to continue.



**Figure 2, Local or Network Printer**

8. The third page of the “**ADD PRINTER WIZARD**” will be displayed as shown in Figure 3. Click on “**Use the following port**”. Next, scroll down through the list of available ports until “**USB001**” is highlighted. Then click on **<NEXT>** to continue

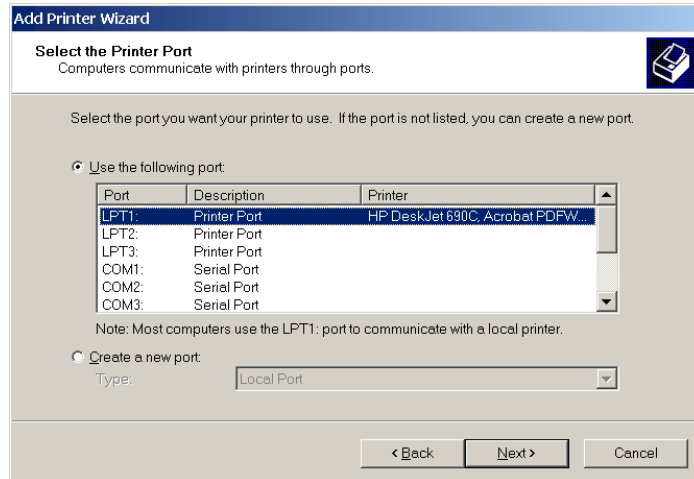


Figure 3, Printer Port

9. The fourth page of the “**ADD PRINTER WIZARD**” will be displayed as shown in Figure 4. Click on **<HAVE DISK>**. This will bring up the “**INSTALL FROM DISK**” splash screen.

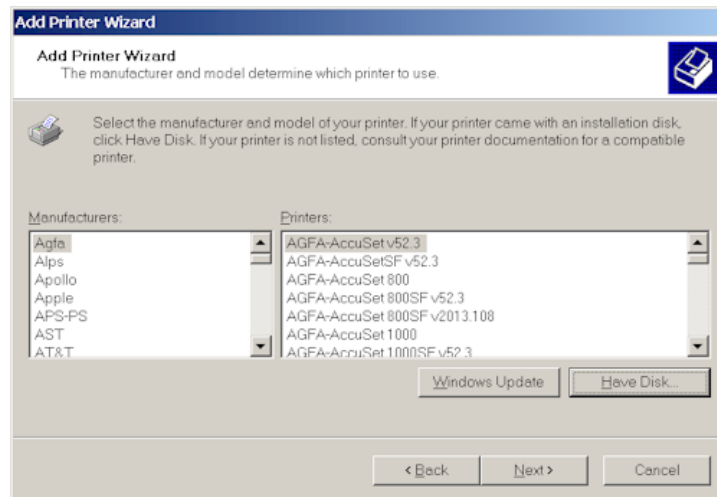


Figure 4, Printer Manufacturer

10. Place the “**OKIDATA B4250 Installation Software**” CD ROM disk in the DVD-ROM drive of the computer. Wait 10 seconds for the Drive to read the disk.
11. In the “**Copy manufacturer’s file from:**” field, Go to **Browse** and click on **D:\Drivers\B4250\English\ Win2k\_xp\** directory and select the **B42503e.inf** file and click on **Open**.
12. In the “**INSTALL FROM DISK**” splash screen click on **<OK>**.
13. At the Name your Printer Prompt click **<NEXT>**.
14. Highlight “**Do Not Share this Printer**” and click **<NEXT>**.
15. When prompted “**Do You Want To Print a Test Page?**” click **<YES>** and then **<NEXT>**.
16. Next, click on **<FINISH>** and then **<OK>** if the page printed correctly.
17. Remove the “**OKIDATA B4250 Installation Software**” CD-ROM disks from the DVD-ROM Drive and places it in the Unit’s Storage Compartment.

## INSTALLING THE B4250 PRINTER STATUS MONITOR ON OBIS

**NOTE:** *YOU MUST FIRST UN-INSTALL ANY OLDER VERSIONS OF THE OKIDATA STATUS MONITOR PROGRAM BEFORE YOU CAN LOAD THE B4250 STATUS MONITOR. YOU CAN CHECK IF ONE IS INSTALLED BY GOING TO START→PROGRAMS→(IF OKIDATA OR OKI XXXX) APPEARS UNDER PROGRAMS, THEN AN OLDER STATUS MONITOR IS ALREADY PREINSTALLED, AND YOU WILL NEED DELETE THIS PROGRAM BY STARTIING AT LINE 1 BELOW. OTHERWISE YOU CAN SKIP TO LINE 6.*

### Uninstalling an older version of the Okidata Status Monitor

1. Go to Start→ Settings → Control Panel.
2. Double click on "**Add Remove Programs**".
3. Scroll down the list of software until you get to the OKI XXXX program.
4. Click on "**Change/Remove**". It will ask you if you want to confirm file deletion. Click on "**Yes**" and it will uninstall. Click on **<OK>** when completed.
5. Close the Add/Remove Programs window by clicking on the X in the upper right hand corner of the window.

### Installing the Okidata B4250 Status Monitor

1. Go to **Start→ Run → Browse**. Browse to your DVD-ROM drive where the CD is inserted, and Double-click on **Install.exe**. Click **<OK>**.
2. The License Agreement appears. Click **<next>** if you accept the terms.
3. Select your Language. Then select the Printers Model number (B4250) from the list, and click on **Continue**.
4. Install Shield Wizard appears. Click **<Next>**.
5. Follow the on-screen instructions until it is completely loaded.
6. The Status Monitor can be accessed by going to **Start→ Programs → Okidata → B4250 Status Monitor** and maximizing the Status Monitor window.
7. For more information on how to use the status monitor, refer to the OBIS Service Manual.

**B4250 PRINTER INSTALLATION COMPLETE FOR OBIS**

**OKI B4250 PRINTER on SIS ANALYZERS with WIN 9X OS (Ontario GAS & HD; Virginia SIS):** \_\_\_\_\_

**NOTE:** *A SEPARATE SHEET METAL DRAWER KIT (EAK0226L00A) IS REQUIRED, WHEN REPLACING AN OKI 6E; OKI 10E OR OKI 14E PRINTER WITH AN OKI B4250 PRINTER. ORDER AND INSTALL THIS KIT FIRST, BEFORE CONTINUING. THIS KIT IS NOT REQUIRED IF AN OKIDATA B4200 OR B4250 PRINTER WAS PREVIOUSLY INSTALLED.*

**NOTE:**

1. Remove the defective printer from the unit, and leave the data cable and AC power supply cord attached to the unit.
2. Unpack the new Oki B4250 printer from the box, and follow the Okidata instructions for proper hardware setup. For Software setup follow the instructions below.
3. Install the Oki B4250 Printer into the SIS Machine. Connect the existing data cable and AC Power cable to the Oki B4250 printer. Turn on the power switch on the side of the printer.

**NOTE:** *ENSURE THE PRINTER IS TURNED ON (1) POSITION AND CONNECTED TO THE COMPUTER VIA THE PARALLEL PORT CONNECTION.*

4. Power up the SIS analyzer.

**NOTE:** *IF WINDOWS PLUG AND PLAY FINDS THE PRINTER DO NOT CLICK ON ANY OF THE BUTTONS*

5. Select **Start** ⇒ **Settings** ⇒ **Printers**. Right click on the current printer icon. Double click on **<Delete>**.
6. Click on **<Yes>** to delete the current printer.
7. Select the **Add Printer Wizard**, select **Next >**.
8. Select **"Local Printer"**, select **Next >**.
9. Select **<Have Disk>** select **Next >**.
10. Insert Oki B4250 ® Software CD into the CD/DVD-ROM Drive.
11. Select browse. Browse the CD-ROM drive to select the following directory path **D:\Drivers\B4250\English\Win9xMe** then select **<OK>**.
12. Follow any onscreen prompts to complete the loading of the drivers.
13. Do not change the **"Printer Name"** that is currently listed; select **<Yes>** for **"Make this printer your default printer"**.
14. Follow any onscreen prompts to complete the loading of the software.
15. Click on **<Yes>** to print test page. Visually inspect the test page for print quality.
16. Once the software completes loading the unit will need to reboot for changes to take effect, reboot the unit at this time.

**PRINTER INSTALLATION COMPLETE FOR  
OKI B4250 PRINTER ON SIS MACHINE ANALYZERS  
BAR 97; WIN 9X OS (VIRGINIA SIS)**

**OKI B4250 Printer on SIS (BAR 97); DOS 6.22 for NJ; PA; TX, NC, CA (BAR 97 ONLY):** \_\_\_\_\_

**NOTE:** *A SEPARATE SHEET METAL DRAWER KIT (EAK0226L00A) IS REQUIRED, WHEN REPLACING AN EXISTING HP DESKJET; OKI 6E; OKI 10E OR OKI 14E PRINTER WITH AN OKI B4250 PRINTER. ORDER AND INSTALL THIS KIT FIRST, BEFORE CONTINUING. THIS KIT IS NOT REQUIRED IF AN OKIDATA B4200 OR B4250 PRINTER WAS PREVIOUSLY INSTALLED.*

1. For California only. Remove the defective printer and the power supply cord attached to the AC adapter on the back of the computer. The AC adapter should stay attached to the back of the computer.
2. Unpack the new Oki B4250 printer from the box, and follow the Okidata instructions for proper setup.
3. For California only. Using the AC power cord that comes with the new Oki B4250 printer. Connect the AC power cord to the AC adapter on the back of the computer.
4. For all other States, the AC power supply cord should stay with the unit and should be used to provide AC power to the newly installed printer.
5. Install the Oki B4250 Printer into the SIS Machine. Connect the existing data cable to the back of the Oki B4250 printer. Connect the AC cord to the back of the new printer. Turn on the power switch on the side of the printer.

**NOTE:** *ENSURE THE PRINTER IS TURNED ON (1) AND CONNECTED TO THE COMPUTER VIA THE PARALLEL PORT CONNECTION.*

6. Power up the analyzer. While the memory test is being performed, press the <Delete> key to enter the BIOS Setup Mode.
7. When prompted, enter the BIOS password : @C M8 then press  $\square$ .
8. Select "**Boot Options**" and press  $\square$ .
9. Select "**First Boot Device**" then press  $\square$ .
10. Select "**Floppy**" then press  $\square$ .
11. Place the Printer Utility Disk (3-13926AUSD<sup>3</sup>) into Drive A (State Data Drive).
12. Press <F10> to "**Exit and Save Changes**" then press  $\square$  to reboot the system.
13. Select the appropriate Printer from the Menu. **Note: For the B4250 printer select the B4200 model.** Follow the onscreen prompts. Upon completion of Driver Installation, remove the Printer Utility Disk from Drive A (State Data Drive).
14. Power down the unit. Wait 10 seconds after powering down and power up the analyzer. While the memory test is being performed, press the <Delete> key to enter the BIOS Setup Mode.
15. When prompted, enter the BIOS password : @C M8 then press  $\square$ .
16. Select "**Boot Options**" and press  $\square$ .
17. Select "**First Boot Device**" then press  $\square$ .
18. Select "**Hard Disk**" then press  $\square$ .
19. Press <F10> to "**Exit and Save Changes**" then press  $\square$  to reboot the system.

**PRINTER INSTALLATION COMPLETE FOR  
OKI B4250 PRINTER ON SIS MACHINE ANALYZERS BAR 97;  
DOS 6.22 OS FOR NJ; PA; NC; CA (BAR 97 ONLY); TX**

**OKI B4250 PRINTER on SIS with SUN MACHINE Version 3.3; 5.0 with WIN 9X OS:**

**NOTE:** *MAKE SURE OKI B4250 PRINTER IS INSTALLED, AND THE AC POWER CORD AND THE EXISTING DATA CABLE ARE CONNECTED TO THE OKI B4250 PRINTER. ENSURE THE PRINTER IS TURNED ON (1) POSITION.*

1. Power up the Analyzer using the rear panel "Main Power" Switch.
2. Once the Emissions Software has loaded select, "PC OPTION" and press <Y>. The analyzer will now boot to the Main Menu of the PC Option Hard Drive.
3. Select "**Sun Machine Analyzer**"

**NOTE:** *IF WINDOWS PLUG AND PLAY FINDS THE PRINTER CLICK ON THE CANCEL BUTTON AND CLOSE THE WINDOW*

4. Select **Start** ⇒ **Settings** ⇒ **Printers**. Right click on the current printer icon. Double click on "**Delete**".
5. Click on "**Yes**" to delete the current printer.
6. Select the **Add Printer Wizard**, select **Next >**.
7. Select "**Local Printer**", select **Next >**.
8. Select "**Have Disk**" select **Next >**.
9. Insert Oki B4250 ® Software CD into the CD/DVD-ROM Drive.
10. Select browse. Browse the CD-ROM drive. Select the following directory path **D:\Drivers\Win9X** then select "**OK**".
11. Follow any onscreen prompts to complete the loading of the drivers.
12. Do not change the "**Printer Name**" that is currently listed; select "**Yes**" for "**Make this printer your default printer**".
13. Follow any onscreen prompts to complete the loading of the software.
14. Click on "**Yes**" to print test page. Visually inspect the test page for print quality.
15. Select "**No**" for "**Reboot**" or "**Restart**", the unit.
16. Select **Start** ⇒ **Settings** ⇒ **Printers**. Press the right mouse button over the printer icon for the **OKIDATA B4250** printer on the Printers page.
17. Select <**Properties**> on the dialog. Select the **Details** tab.
18. Select the <**Port Settings...**>button.
19. Verify that there is no check mark on **Spool MS-DOS print jobs**, then select **OK**.
20. Select the <**OK**> button on the printer properties dialog.
21. Close the **Printers** window by pressing the <**X**> in the upper right corner of the window.
22. Insert the "**Printer Utility Disk**" (3-13926AUSD3) in the floppy drive.
23. From the desktop, select **Start** ⇒ **Programs** ⇒ **MS DOS Prompt**.
24. At the DOS prompt type **5 . P G b U d c b** and press <**ENTER**>.
25. A message indicating 1 file copied should be displayed, if not you are not in the correct drive or the floppy disk is bad, verify the problem and retry running the Snaon batch file.
26. Exit the DOS window by typing **Y | ] h** at the DOS prompt and press <**ENTER**>.
27. Click on "**Sun Machine Analyzer**" in the Sun Machine Tool Box.
28. Click on <**Continue**> after calibration.
29. Select <**Utilities**> from the top menu bar.
30. Select <**Tester Setup**>, and then select <**Printer Type**>.



31. Select "**Laser Jet 4**".
32. Close "**Utilities**".
33. To make sure the new settings take effect you will need to reboot your unit. Reboot the unit by selecting **Start** ⇒ **Shut down** ⇒ **Shut down the computer** ⇒ **Yes**.

**PRINTER INSTALLATION COMPLETE FOR  
OKI B4250 PRINTER ON SIS MACHINE WITH  
SUN MACHINE SOFTWARE VERSION  
3.3; 5.0 WITH WIN 9X OS**

**OKI B4250 PRINTER on SIS with SUN MACHINE Version 3.3 with DOS OS:**

**NOTE: MAKE SURE OKI B4250 PRINTER IS INSTALLED, AND THE AC POWER CORD AND THE EXISTING DATA CABLE ARE CONNECTED TO THE OKI B4250 PRINTER. ENSURE THE PRINTER IS TURNED ON (1) POSITION.**

1. Power up the Analyzer using the rear panel "Main Power" Switch.
2. Once the Emissions Software has loaded select, "PC OPTION" and press <Y>. The analyzer will now boot to the Main Menu of the PC Option Hard Drive.
3. Press <7> to "Exit to DOS". "C:\>" prompt should be displayed.
4. Place the "Printer Utility Disk" (3-13926AUSD3) in the PC Option Floppy Drive.
5. At the DOS prompt type 5 . P G b U d c b and press <ENTER>.
6. A message indicating 1 file copied should be displayed, if not you are not in the correct drive or the floppy disk is bad, verify the problem and retry running the snapon batch file.
7. Power down the unit. Wait 10 seconds after powering down and power up the analyzer.
8. Once the Emissions Software has loaded select, "PC OPTION" and press <Y>. The analyzer will now boot to the Main Menu of the PC Option Hard Drive.
9. Select <Sun Machine> from the menu.
10. Click on <Continue> after calibration.
11. Select <Utilities> from the top menu bar.
12. Select <Tester Setup>, and then select "Printer Type".
13. Select "Laser Jet 4".
14. Close "Utilities".

**PRINTER INSTALLATION COMPLETE FOR  
OKI B4250 PRINTER ON SIS MACHINE ANALYZERS  
WITH SUN MACHINE SOFTWARE  
VERSION 3.3 WITH DOS OS**

**OKI B4250 PRINTER on MCS 2500 Pep Boys:** \_\_\_\_\_

**NOTE:** *A SEPARATE SHEET METAL DRAWER KIT (EAK0226L10A) IS REQUIRED, WHEN REPLACING AN EXISTING OKI 6E; OKI 10E OR OKI 14E PRINTER WITH AN OKI B4250 PRINTER. ORDER AND INSTALL THIS KIT FIRST, BEFORE CONTINUING. THIS KIT IS NOT REQUIRED IF AN OKIDATA B4200 OR B4250 PRINTER WAS PREVIOUSLY INSTALLED.*

1. Remove the defective printer and unplug the AC power supply cord and data cable attached to the back of the printer.
2. Unpack the new Oki B4250 printer from the box, and follow the Okidata instructions for proper hardware setup. (For proper software setup see line 4 below).
3. Install the Oki B4250 Printer into the unit. Connect the existing data cable and AC Power cable to the Oki B4250 printer. Turn on the power switch on the side of the printer.

**NOTE:** *ENSURE THE PRINTER IS TURNED ON (1) POSITION AND CONNECTED TO THE COMPUTER VIA THE PARALLEL PORT CONNECTION.*

4. Power up the analyzer.
5. Click on <Continue> after calibration.
6. Select <Utilities> from the top menu bar.
7. Select <Tester Setup>, and then select "Printer Type".
8. Select "Laser Jet 4".
9. Press <ESC> key; Select "Save..." to save the new settings.

**PRINTER INSTALLATION COMPLETE FOR  
OKI B4250 PRINTER ON  
MCS 2500 PEP BOYS**

## OKI B4250 PRINTER on SUN MACHINE ANALYZERS with WIN 9X: \_\_\_\_\_

**NOTE:** A separate sheet metal drawer kit (EAK0226L10A) is required, when replacing an existing HP DeskJet; OKI 6E; OKI 10E or OKI 14E PRINTER with AN Oki B4250 printer. Order and install this kit first, before continuing. *THIS KIT IS NOT REQUIRED IF AN OKIDATA B4200 OR B4250 PRINTER WAS PREVIOUSLY INSTALLED.*

1. Remove the defective printer and unplug the AC power supply cord and data cable attached to the back of the printer.
2. Unpack the new Oki B4250 printer from the box, and follow the Okidata instructions for proper hardware setup. (For proper software setup see line 4 below).
3. Install the Oki B4250 Printer into the unit. Connect the existing data cable and AC Power cable to the Oki B4250 printer. Turn on the power switch on the side of the printer.

**NOTE:** ENSURE THE PRINTER IS TURNED ON (1) POSITION AND CONNECTED TO THE COMPUTER VIA THE PARALLEL PORT CONNECTION.

**NOTE:** IF WINDOWS PLUG AND PLAY FINDS THE PRINTER CLICK ON THE CANCEL BUTTON AND CLOSE THE WINDOW

4. Select **Start** ⇒ **Settings** ⇒ **Printers**. Right click on the current printer icon. Double click on "Delete".
5. Click on <Yes> to delete the current printer.
6. Select the <Add Printer Wizard>, select **Next** >.
7. Select <Local Printer>, select **Next** >.
8. Select <Have Disk> select **Next** >.
9. Insert Oki B4250 ® Software CD into the CD/DVD-ROM Drive.
10. Select browse. Browse the CD-ROM drive and select the following directory path **D:\Drivers\Win9X** then select <OK>.
11. Follow any onscreen prompts to complete the loading of the drivers.
12. Do not change the "Printer Name" that is currently listed; select <Yes> for "Make this printer your default printer".
13. Follow any onscreen prompts to complete the loading of the software.
14. Click on <Yes> to print test page. Visually inspect the test page for print quality.
15. Once the software completes loading the unit will need to reboot for changes to take effect, reboot the unit at this time.
16. Select **Start** ⇒ **Settings** ⇒ **Printers**. Press the right mouse button over the printer icon for the **OKIDATA B4250** printer on the Printers page.
17. Select <Properties> on the dialog. Select the **Details** tab.
18. Select the <Port Settings...> button.
19. Verify that there is no check mark on **Spool MS-DOS print jobs**, then select <OK>.
20. Select the <OK> button on the printer properties dialog.
21. Close the **Printers** window by pressing the **X** in the upper right corner of the window.
22. Insert the "Printer Utility Disk" (3-13926AUSD3) in the floppy drive.
23. From the desktop, select **Start** ⇒ **Programs** ⇒ **MS DOS Prompt**. At the DOS prompt type **A:** and press <ENTER>.
24. From the **A:** prompt type "Snapon" and press <ENTER>.
25. A message indicating 1 file copied should be displayed, if not you are not in the correct drive or the floppy disk is bad, verify the problem and retry running the snapon batch file.

26. Exit the DOS window by typing `Y | ] h` at the DOS prompt and press **<ENTER>**.
27. To make sure the new settings take effect you will need to reboot your unit. Reboot the unit by selecting **Start ⇒ Shut down ⇒ Shut down the computer ⇒ Yes**.
28. Click on **“Sun Machine Analyzer”** in the Sun Machine Tool Bar.
29. Click on **<Continue>** after calibration.
30. Select **<Utilities>** from the top menu bar.
31. Select **<Tester Setup>**, and then select **<Printer Type>**.
32. Select **<Laser Jet 4>**.
33. Close **“Utilities”**

**PRINTER INSTALLATION COMPLETE FOR  
OKI B4250 PINTER ON SUN MACHINE ANALYZERS  
WITH WIN 9X OS**

**OKI B4250 PRINTER SUN MACHINE ANALYZERS with DOS 6.22:** \_\_\_\_\_

**NOTE:** A separate sheet metal drawer kit (EAK0226L10A) is required, when replacing an existing HP DeskJet; OKI 6E; OKI 10E or OKI 14E PRINTER with AN Oki B4250 printer. Order and install this kit first, before continuing. *THIS KIT IS NOT REQUIRED IF AN OKIDATA B4200 OR B4250 PRINTER WAS PREVIOUSLY INSTALLED.*

1. Remove the defective printer and unplug the AC power supply cord and data cable attached to the back of the printer.
2. Unpack the new Oki B4250 printer from the box, and follow the Okidata instructions for proper hardware setup. (For proper software setup see line 4 below).
3. Install the Oki B4250 Printer into the unit. Connect the existing data cable and AC Power cable to the Oki B4250 printer. Turn on the power switch on the side of the printer.

**NOTE:** *ENSURE THE PRINTER IS TURNED ON (1) POSITION AND CONNECTED TO THE COMPUTER VIA THE PARALLEL PORT CONNECTION.*

4. Power up the analyzer and when fully booted, exit to DOS prompt.
5. Insert the “**Printer Utility Disk**” (3-13926AUSD3) in the floppy drive.
6. At the DOS prompt type 5 . P G b U d c b and press <ENTER>.
7. An message indicating 1 file copied should be displayed, if not you are not in the correct drive or the floppy disk is bad, verify the problem and retry running the snapon batch file.
8. You must reboot unit for changes to take effect.
9. Select “**Sun Machine**” from the menu
10. Click on “**Continue**” after calibration.
11. Select <Utilities> from the top menu bar.
12. Select <Tester Setup>, and then select <Printer Type>.
13. Select <Laser Jet 4>
14. Close <Utilities>.

**PRINTER INSTALLATION COMPLETE FOR  
OKI B4250 PINTER ON SUN MACHINE ANALYZERS  
WITH DOS OS**

**OKI B4250 PRINTER INSTALLATION VERIFICATION:** \_\_\_\_\_

- Printer Power LED is on, no blinking or red LED's should be seen
- Upon Power up the printer should initialize
- Test Page should be printed with no errors.
- Perform Print Screen Test after installation is complete to verify the proper operation on the printer.

**PRINTER INSTALLATION TROUBLESHOOTING:**

<b>Fault</b>	<b>Resolution</b>
<b>No Printer Power LED On</b>	Check AC Cord Connection from the Source to the Printer
<b>Printer does not print (No Error LEDS)</b>	<p>Check data printer cable or USB connection from the computer to the printer.</p> <p>Unplug and plug it back again. Turn printer power off, wait for 10 seconds and turn power on.</p> <p>If using a Windows OS verify that the Oki B4250 driver is the only printer driver installed and that it is set as the default printer. (If no drivers are installed, refer back to the installation instructions in this document).</p> <p>If installed on an OBIS unit and the printer will still not print a test page.</p> <p>Left click on the B4250 printer icon and go to properties and then to the "Ports" tab.</p> <p>Verify that there is only one USB port listed.</p> <p>If more then one is listed, select the other USB port and click on OK and try printing a Test page again.</p>
<b>Blinking Orange Error LED</b>	<p>Check data printer cable or USB connection from the computer to the printer.</p> <p>Unplug and plug it back again. Turn printer power off, wait for 10 seconds and turn power on.</p> <p>Check the Paper tray for paper.</p> <p>Check the Paper tray for correct paper size setup, should be set to paper size of 11 X 8.5</p> <p>Check the printer for any paper jams.</p> <p>Check the installation of the toner cartridge.</p>
<b>Blank sheets printed.</b>	<p>Image drum cartridge not properly installed. Reinstall image drum cartridge.</p> <p>Empty or missing toner cartridge. Install new toner cartridge, "Type 9" toner cartridge (3-03306A05).</p>
<b>Entire page prints faintly</b>	<p>Empty toner cartridge.</p> <p>Pages get fainter when toner is low. Install new "Type 9" toner cartridge</p>
<b>Page has gray background</b>	<p>Static electricity, generally from dry, cotton fiber papers, causes toner to stick to background.</p> <p>Change to approved laser bond or use a humidifier.</p>
<b>Vertical white streaking or faint areas on page.</b>	<p>Toner is low and does not distribute properly, or the drum is worn out.</p> <p>Replace toner cartridge. Check drum and replace the "Type 9" if necessary</p>
<b>Bold characters and dark lines are smeared</b>	<p>Toner is low. Install new "Type 9" toner cartridge</p>
<b>Pages curl excessively</b>	<p>Printing on wrong side of paper. High humidity.</p> <p>Turn paper over in tray.</p> <p>Note arrow on paper package.</p> <p>Install paper print side down in tray.</p> <p>Moisture in paper.</p> <p>Improper storage.</p> <p>Avoid storing paper in areas of excessive temperature and humidity.</p> <p>Recommended operating humidity: 20-80%</p>



Fault	Resolution
<b>Fuzzy print.</b>	Dirty LED array. Clean LED array. The LED array is on the underside of the printer cover. Wipe it gently with the cleaning pad that is included in the toner cartridge kit. You can also use a clean, soft cloth with a small amount of rubbing alcohol on it
<b>Printer does not print when Print Screen function is used in Utility Programs i.e. SIS Test; UB Test</b>	Reinstall Printer driver using the Printer Utility Disk
<b>Printer does not print VIR or reports in Fix The Car Utility</b>	Reinstall Bar 97 Emissions Software (Full Install), and select "PCL" Printer when prompted. <b>In Fix The Car Utility confirm that the correct printer is selected for the "Printer Setup" selection.</b>