



SUN ELECTRIC

Model: SUN KOOL KARE
EEAC104B
R-134a UNIT SETUP

Page: 1 of 5

Installation Instructions

**INSTALLATION MUST BE PERFORMED
BY
QUALIFIED SUN PERSONNEL ONLY**

INSTALLATION OVERVIEW: _____

The Installation Procedures listed are for the SUN KOOL KARE unit (EEAC104B for R-134a). The unit is shipped as a fully assembled unit, with the exception of the items listed in the Parts & Accessories List.

PLEASE READ THESE INSTRUCTIONS COMPLETELY BEFORE SETTING UP UNIT



CAUTION!

THIS UNIT MUST BE PLUGGED INTO A PROPER AC OUTLET FOR UNIT TO OPERATE CORRECTLY. REFER TO THE UNIT ID PLATE LOCATED ON BACK OF UNIT. EXTENSION CORDS ARE NOT RECOMMENDED, BUT IF AN EXTENSION CORD MUST BE USED, USE A CORD THAT IS LESS THAN 50 FEET WITH A 16 AWG, OR ABOVE 50 FEET AND LESS THAN 100 FEET WITH A 14 AWG.



WARNING!

**USE STANDARD REFRIGERANT HANDLING
SAFETY PROCEDURES WHEN PERFORMING INSTALLATION**

ALWAYS WEAR SAFETY GOGGLES, DON'T SPILL OR TOUCH LIQUID REFRIGERANT, AVOID FLAMES, AND EXCESSIVE HEAT. USE ONLY IN WELL VENTILATED AREA.

PARTS & ACCESSORIES: _____

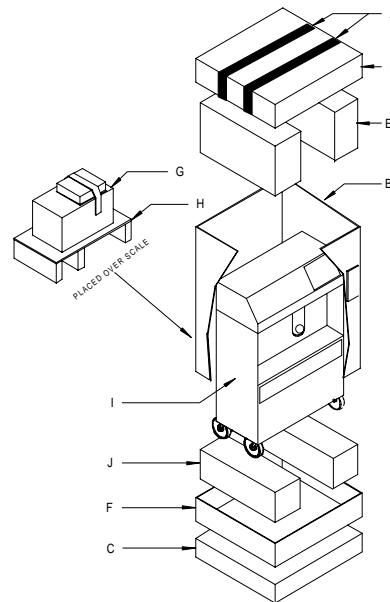
PART NUMBER	DESCRIPTION	QTY
EAH0001C02A	Hose, 96" R-134a Blue	1
EAH0001C01A	Hose, 96" R-134a Red	1
TEEAC104B	Installation Instructions	1
EAK0027C00AS	Kit, Vehicle Adapter O-Ring	1
ZEEAC104B	Users Manual	1
1585	Bottle, Oil Charge	1
16826	Screw, 8-32x3	1
115080	Adapter, Low Side Tank (For Virgin Tank to Low Side Adapter)	1
07180108	Holders, Hose (P-Clips)	2
0647028707	Adapter, Vehicle, High Side (Coupler)	1
0647028708	Adapter, Vehicle, Low Side (Coupler)	1
0692191401	MAC's Form, Mail-In	1
0692192801	Product Registration Form	1
0692224201	MAC's Certification Form	1
4211000101	Envelope	1
0692229101	Product & Warranty Registration	1
7009244701	Recovery Tank Assembly	1

REQUIRED TOOLS: _____

- **Screwdriver (Flat Blade and Phillips)**
- **Safety Goggles (0001-5005)**
- **Refrigerant Oil (Mineral) or Superlube (0681-0193-02 or -03)**

UNPACKING UNIT AND ACCESSORIES: _____

1. Cut Straps (A), and slide the carton (B) off the pallet (C).
2. Remove the top of the carton (D), and packing foam (E) from unit. Split the corners of the base carton (F).
3. Remove all boxes (G) and packing material (H) from scale/tank compartment.
4. Lean the unit (I) so it can be rolled off the base carton (F).
5. Lean one side of unit (I) so packing foam (J) can be removed. Repeat for other side.
6. Inventory all items (G) using the Parts & Accessories list and inspect for damage.
7. Discard scale guard (H).

**FIGURE 1 UNIT PACKAGE**

PARTS & ACCESSORIES SETUP:

1. Remove the Blue and Red Hoses from the accessories box and **OIL** the seals on each end.
2. Connect the open end of the Blue and Red Hoses to the low and high side service ports respectively on the backside of unit.
3. Connect the Red and Blue adapters (0647028707 and 0647028708) to the Red and Blue Hoses from the service ports respectively.
4. Remove the two P-Clip Hose Holders (07180108) and Screw (16826) from the accessories box. Slide the red and blue hoses through the p-clips. Using the supplied screw, mount both p-clips to the unit's back panel near the cord wrap.
5. Place the O-Ring Kit (EAK0027C00AS) on top of unit.
6. Remove the Oil Charge Bottle (1585) from the accessories box. Attach the oil charge bottle to the port just below the power switch on front of unit. (Refer to the User's Manual on operation of the Oil Charge feature.)
7. Peel the backing from the User's Manual Envelope (4211000101) and apply the envelope, with the open end on top, to either side of the unit, or in the location designated by the customer.
8. Remove the User's Manual, and place the remainder of the documents in the envelope.

BE SURE TO REVIEW THE USER'S MANUAL WITH THE CUSTOMER DURING TRAINING.

9. Place the User's Manual in the Envelope.
10. Remove Recovery Tank (7009244701) from its box. Remove cardboard wrap from Recovery Tank. Set on floor in front of unit.

PREPARING NEW RECOVERY TANK:

1. Referring to FIGURE 2, open the **BLUE** valve on Recovery Tank to release ALL COMPRESSED AIR.
2. Remove the Particle Filter from the Recovery Tank. **OIL** seal. (**BLUE VALVE**)
3. Attach Low Side Tank Adapter (115080) to the **BLUE** valve of Recovery Tank. (**DO NOT OVER TIGHTEN**).
4. Connect the **BLUE** service hose to the low side tank adapter. Open the vehicle adapter.
5. Plug AC Cord to a 115VAC outlet. Turn unit on using the front power switch.

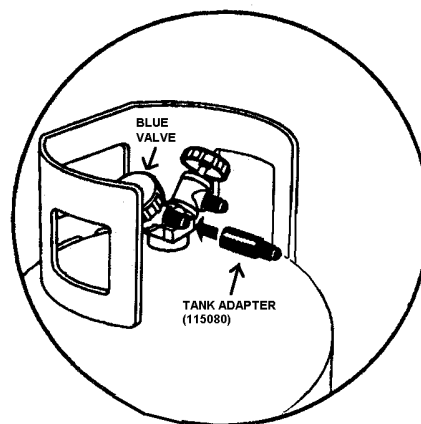


FIGURE 2 RECOVERY TANK

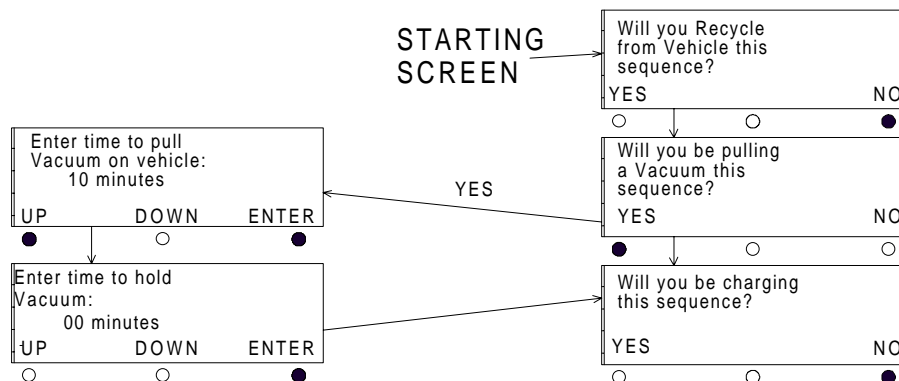


CAUTION!

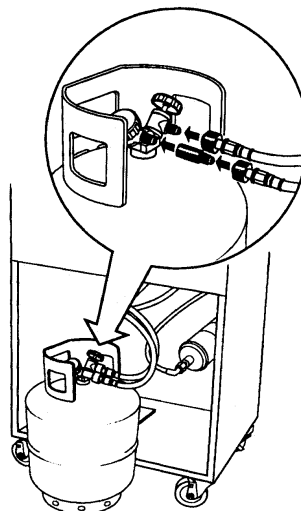
THIS UNIT MUST BE PLUGGED IN TO A PROPER AC OUTLET FOR UNIT TO OPERATE CORRECTLY. REFER TO UNIT ID PLATE LOCATED ON BACK OF UNIT. EXTENSION CORDS ARE NOT RECOMMENDED, BUT IF AN EXTENSION CORD MUST BE USED, USE A CORD THAT IS LESS THAN 50 FEET WITH A 16 AWG, OR ABOVE 50 FEET AND LESS THAN 100 FEET WITH A 14 AWG.

PREPARING NEW RECOVERY TANK continued:

6. Following the displays in FIGURE 3, to program a 10-minute vacuum time.

**FIGURE 3 VACUUM MODE**

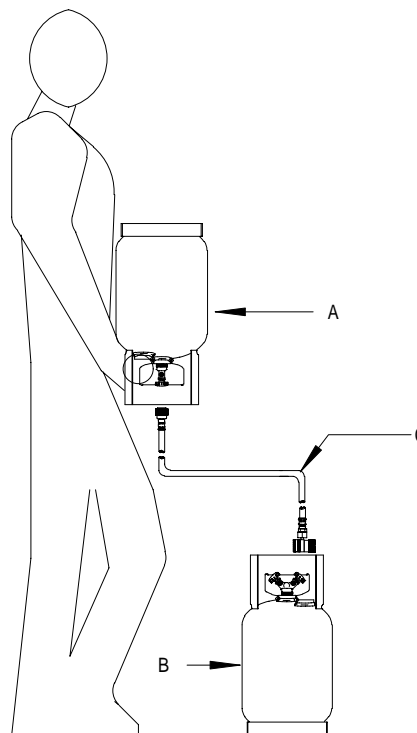
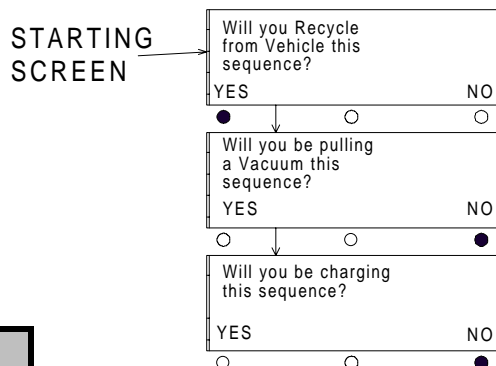
7. Once completed, close Recovery Tank valve (**BLUE**) and remove Service Hose from Recovery Tank. Remove tank adapter.
8. Replace the Particle Filter to the Recovery Tank. (*BLUE SIDE*)
9. Place Recovery Tank on scale. Tank fittings should face straight out the back of unit. Connect velcro strap and tighten belt.
10. Remove bubble wrap from Red and Blue Hoses on unit near the recovery tank.
11. **OIL** seals on the anti-blow back valves on Red and Blue Hoses from unit. Connect respectively to Recovery Tank. Refer to FIGURE 4

**FIGURE 4 INSTALLING TANK**

CHARGING RECOVERY TANK:

NOTE: THIS PROCEDURE IS USED TO SETUP THE UNIT FOR CHARGING. RECOVERY TANK SHOULD HAVE AT LEAST A 25" VACUUM. THIS PROCEDURE IS DONE WHEN RECOVERY TANK IS ON THE SCALE

1. Be sure Recovery Tank valves (B) are closed. Refer to FIGURE 5
2. Disconnect the Red and Blue hoses from the Recovery Tank.
3. Connect the low side tank adapter to the Red Valve on the Recovery Tank (B).
4. Connect the blue service hose (C) (w/vehicle adapter) to the low side tank adapter. Open vehicle adapter.
5. Connect the other end of the blue service hose to the Virgin Tank (A). Raise the Virgin Tank to a higher level than the Recovery Tank.
6. Open the Red Valve on the Recovery Tank.
7. Invert the Virgin Tank (A) and open valve. Gravity and vacuum will transfer the liquid refrigerant to the Recovery Tank faster than reclaiming it.
8. Press **<AMOUNT>** to display the amount of refrigerant that has been transferred.
9. After the desired amount of refrigerant has been transferred, close valves on Virgin Tank and Recovery Tank. Set Virgin Tank on ground upright.
10. Disconnect the blue service hose from recovery tank. Disconnect the low side tank adapter from recovery tank. Connect adapter to low side service port on back of unit.
11. **Re-Oil** seals on anti-blow back valves on Red and Blue Hoses from unit and connect to Recovery Tank. Open Recovery Tank valves.
12. Connect the blue service hose to the service port. (This is a backward configuration than a normal operation.)
13. Following the displays in FIGURE 6, perform a recover mode. This will reclaim the refrigerant from the hose. (Optional: Opening Virgin Tank valve will reclaim rest of refrigerant.)
14. Once complete, disconnect the blue service hose from Virgin Tank and service port. Disconnect the low side tank adapter.
15. Re-install the blue service hose correctly to the service port.

**FIGURE 5 CHARGING TANK****FIGURE 6 RECOVER MODE**

REMEMBER TO OIL O-RINGS AND SEALS WHEN ATTACHING HOSES OR FITTINGS

INSTALLATION COMPLETE/SETUP COMPLETE