



**Model:** PROLINE 734-AP  
EEAC511B  
R-134a UNIT SETUP

**Page:** 1 of 5

# Installation Instructions

**INSTALLATION MUST BE PERFORMED  
BY  
QUALIFIED JOHN BEAN/EQUISERV PERSONNEL ONLY**

## INSTALLATION OVERVIEW: \_\_\_\_\_

The Installation Procedures listed are for the John Bean Proline-734AP unit (EEAC511B for R-134a). The unit is shipped as a fully assembled unit, with the exception of the items listed in the Parts & Accessories List.

**PLEASE READ THESE INSTRUCTIONS COMPLETELY BEFORE SETTING UP UNIT**



## CAUTION!

THIS UNIT MUST BE PLUGGED INTO A PROPER AC OUTLET FOR UNIT TO OPERATE CORRECTLY. REFER TO THE UNIT ID PLATE LOCATED ON BACK OF UNIT. EXTENSION CORDS ARE NOT RECOMMENDED, BUT IF AN EXTENSION CORD MUST BE USED, USE A CORD THAT IS LESS THAN 50 FEET WITH A 16 AWG, OR ABOVE 50 FEET AND LESS THAN 100 FEET WITH A 14 AWG.



## WARNING!

**USE STANDARD REFRIGERANT HANDLING  
SAFETY PROCEDURES WHEN PERFORMING INSTALLATION**

**ALWAYS WEAR SAFETY GOGGLES, DON'T SPILL OR TOUCH LIQUID REFRIGERANT, AVOID FLAMES, AND EXCESSIVE HEAT. USE ONLY IN WELL VENTILATED AREA.**

**PARTS & ACCESSORIES:** \_\_\_\_\_

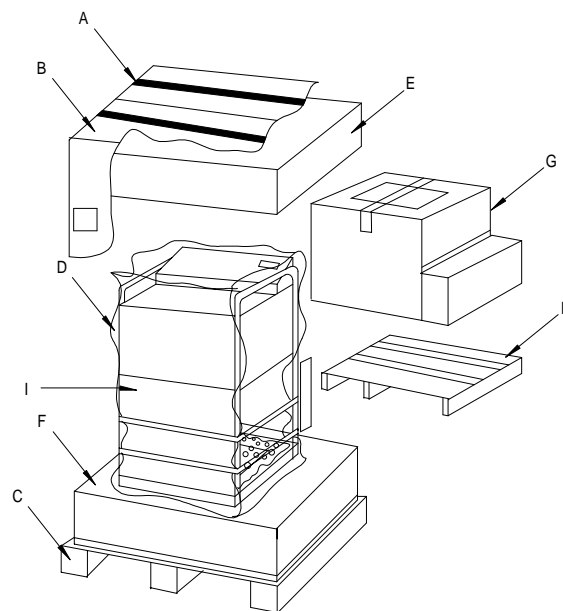
PART NUMBER	DESCRIPTION	QTY
0647028707	Adapter, Vehicle, High Side (Coupler)	1
0647028708	Adapter, Vehicle, Low Side (Coupler)	1
0692191401	MAC's Form, Mail-In	1
0692192801	Product Registration Form	1
0692224201	MAC's Certification Form	1
0692229101	Product & Warranty Registration	1
4211000101	Envelope	1
7009244701	Recovery Tank Assembly	1
EAH0014C01A	Gauge Set, R-134a Manifold	1
EAK0027C00AS	Kit, Vehicle Adapter O-Ring	1
TEEAC511B	Installation Instructions	1
ZEEAC511B	Users Manual	1

**REQUIRED TOOLS:** \_\_\_\_\_

- **Screwdriver (Flat Blade and Phillips)**
- **Safety Goggles (0001-5005)**
- **Refrigerant Oil (Mineral) or Superlube (0681-0193-02 or -03)**

**UNPACKING UNIT AND ACCESSORIES:** \_\_\_\_\_

1. Cut Straps (A), and slide the carton (B) off the pallet (C).
2. Remove the carton (B), and packing foam (E) from unit. Split the foam of the base (F) in front.
3. Remove protective cover (D) from unit.
4. Remove all boxes (G) and packing material (H) from scale/tank compartment.
5. Slide the unit (I) so it can be rolled off the base foam (F). The unit will need to be walked back and forth until the front casters are on the ground.
6. Lean the unit (I) forward so packing foam (F) can be removed.
7. Inventory all items using the Parts & Accessories list and inspect for damage.

**FIGURE 1 UNIT PACKAGE**

## PARTS & ACCESSORIES SETUP:

1. Remove the Gauge Set Assembly (EAH0014C01A) from the gauge set box and place on gauge set bracket.
2. Remove the Blue and Red Hoses from the gauge set box and **OIL** the seals on each end.
3. Connect the open end of the Blue and Red Hoses to the Gauge Set respectively.
4. Connect the Red and Blue adapters (0647028707 and 06470287008) to the Red and Blue Hoses from the Gauge Set respectively.
5. Place the O-Ring Kit (EAK0027C00AS) in the Storage Compartment.
6. Remove the User's Manual, and place the remainder of the documents in the envelope.

### **BE SURE TO REVIEW THE USER'S MANUAL WITH THE CUSTOMER DURING TRAINING.**

7. Peel the backing from the User's Manual Envelope (4211000101) and apply the envelope, with the open end on top, to either side of the unit, or in the location designated by the customer.
8. Place the User's Manual in the Envelope.
9. Remove Recovery Tank (7009244701) from its box. Remove cardboard wrap from Recovery Tank. Set on floor in front of unit.

## PREPARING NEW RECOVERY TANK:

1. Referring to FIGURE 2, open the **BLUE** valve on Recovery Tank to release ALL COMPRESSED AIR.
2. Remove the Particle Filter from the Recovery Tank. **OIL** seal, and re-attach to Recovery Tank. (**BLUE SIDE**)
3. Remove the Yellow Hose from the gauge set box. **OIL** the seals on each end of hose.
4. Attach open end of Yellow Hose to **BLUE** valve of Recovery Tank. Attach other end of Yellow Hose to service port on the back side of unit near the tank. Open ball valve on yellow hose.
5. Plug AC Cord to a 115VAC outlet. Turn unit on using the front power switch.

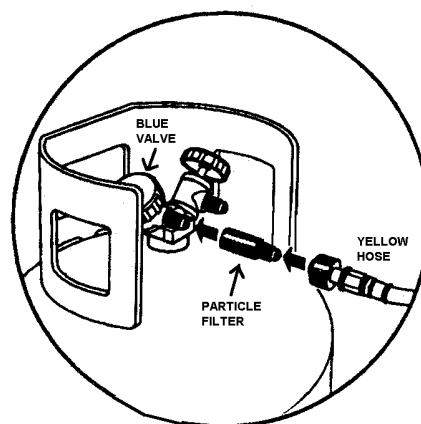


FIGURE 2 RECOVERY TANK

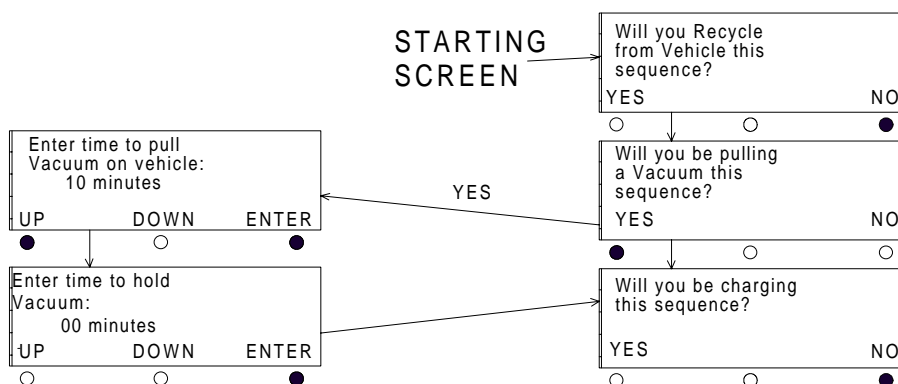


## CAUTION!

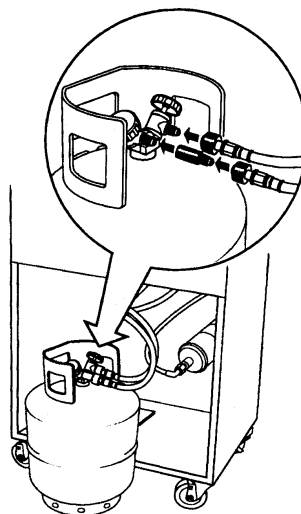
THIS UNIT MUST BE PLUGGED IN TO A PROPER AC OUTLET FOR UNIT TO OPERATE CORRECTLY. REFER TO UNIT ID PLATE LOCATED ON BACK OF UNIT. EXTENSION CORDS ARE NOT RECOMMENDED, BUT IF AN EXTENSION CORD MUST BE USED, USE A CORD THAT IS LESS THAN 50 FEET WITH A 16 AWG, OR ABOVE 50 FEET AND LESS THAN 100 FEET WITH A 14 AWG.

**PREPARING NEW RECOVERY TANK continued:**

6. Following the displays in FIGURE 3, program a 10 minute vacuum time.

**FIGURE 3 VACUUM MODE**

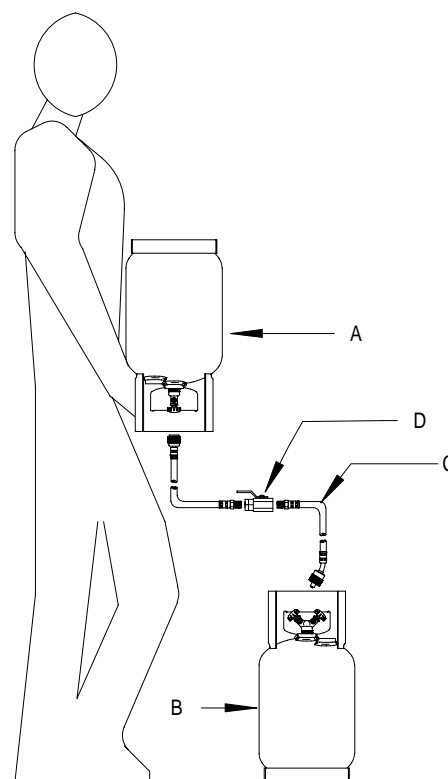
7. Once completed, close Recovery Tank valve (**BLUE**) and remove Yellow Hose from Recovery Tank.
8. **Re-OIL** seal on Yellow Hose and connect to center port on Gauge Set.
9. Place Recovery Tank on scale. Tank fittings should face straight out the back of unit. Connect velcro strap and tighten belt.
10. Remove bubble wrap from Red and Blue Hoses on unit
11. **OIL** seals on the anti-blow back valves on Red and Blue Hoses from unit. Connect respectively to Recovery Tank. Refer to FIGURE 4

**FIGURE 4 INSTALLING TANK**

**CHARGING RECOVERY TANK:**

**NOTE: THIS PROCEDURE IS USED TO SETUP THE UNIT FOR CHARGING. RECOVERY TANK SHOULD HAVE AT LEAST A 25" VACUUM. THIS PROCEDURE IS DONE WHEN RECOVERY TANK IS ON THE SCALE.**

1. Be sure Recovery Tank valves (B) are closed. Refer to FIGURE 5
2. Disconnect the Red and Blue hoses from the Recovery Tank.
3. Disconnect and **Re-Oil** both the seals on Yellow hose (C). Connect the long side of the Yellow Hose to the Virgin Tank (A).
4. Connect the short side of the Yellow Hose to the Red Valve on the Recovery Tank (B).
5. Open the Red Valve on the Recovery Tank.
6. Invert the Virgin Tank and open valve. Open Hand Valve (D) on the Yellow Hose to allow the refrigerant to flow.
7. Raise the Virgin Tank to a higher level than the Recovery Tank. Gravity and vacuum will transfer the liquid refrigerant to the Recovery Tank faster than reclaiming it.
8. Press **<AMOUNT>** to display the amount of refrigerant that has been transferred.
9. After the desired amount of refrigerant has been transferred, close valves on Virgin Tank and Recovery Tank. Set Virgin Tank on ground upright.
10. Close Hand Valve on Yellow Hose. Disconnect Yellow Hose from Recovery Tank.
11. **Re-Oil** seals on anti-blow back valves on Red and Blue Hoses from unit and connect to Recovery Tank. Open Recovery Tank valves.
12. **Re-Oil** seal on Yellow Hose and connect to service port on the back side of unit near the tank. Open Hand Valve on Yellow Hose.
13. Following the displays in FIGURE 6, perform a recover mode. This will reclaim the refrigerant from the hose. (Optional: Opening Virgin Tank valve will reclaim rest of refrigerant.)
14. Once complete, disconnect Yellow Hose from Virgin Tank.
15. **Re-Oil** seals on Yellow Hose and connect to center port on Gauge Set.

**FIGURE 5 CHARGING TANK**STARTING  
SCREEN

Will you Recycle from Vehicle this sequence?	
YES <input checked="" type="radio"/>	NO <input type="radio"/>
Will you be pulling a Vacuum this sequence?	
YES <input type="radio"/>	NO <input checked="" type="radio"/>
Will you be charging this sequence?	
YES <input type="radio"/>	NO <input checked="" type="radio"/>

**FIGURE 6 RECOVER MODE**

**REMEMBER TO OIL O-RINGS  
AND SEALS WHEN ATTACHING  
HOSES OR FITTINGS**

**INSTALLATION COMPLETE/SETUP COMPLETE**