

Snap-on®



Tire Changer

EEWH311B / EEWH326A

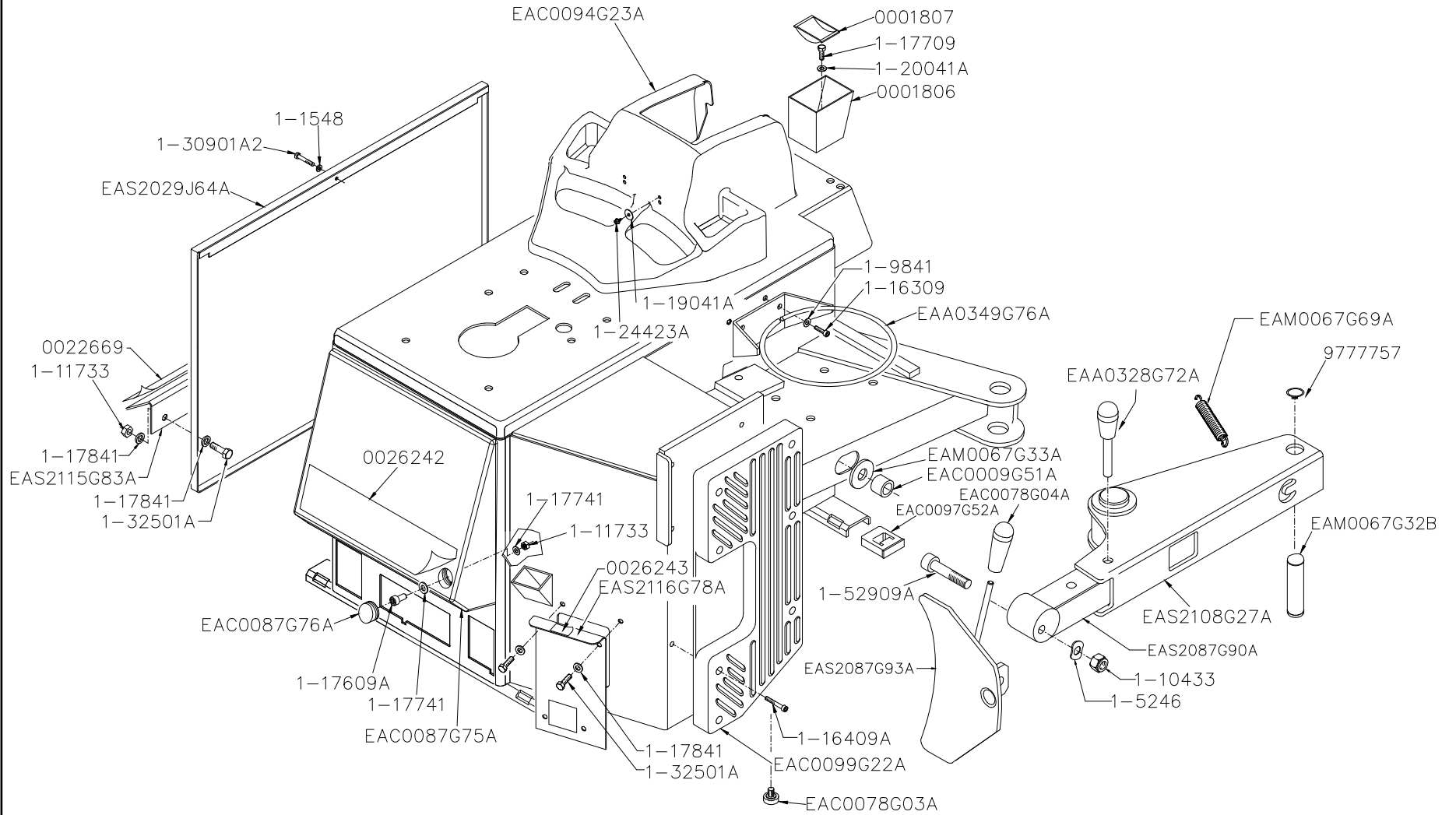
All information contained or disclosed in this document is considered confidential and proprietary by Snap-on Tools Company. All manufacturing, use, reproduction, and sales rights are reserved by Snap-on Tools Company and the information contained herein shall not be used in whole or in part without the express written consent of Snap-on Tools Company.

Table of Contents

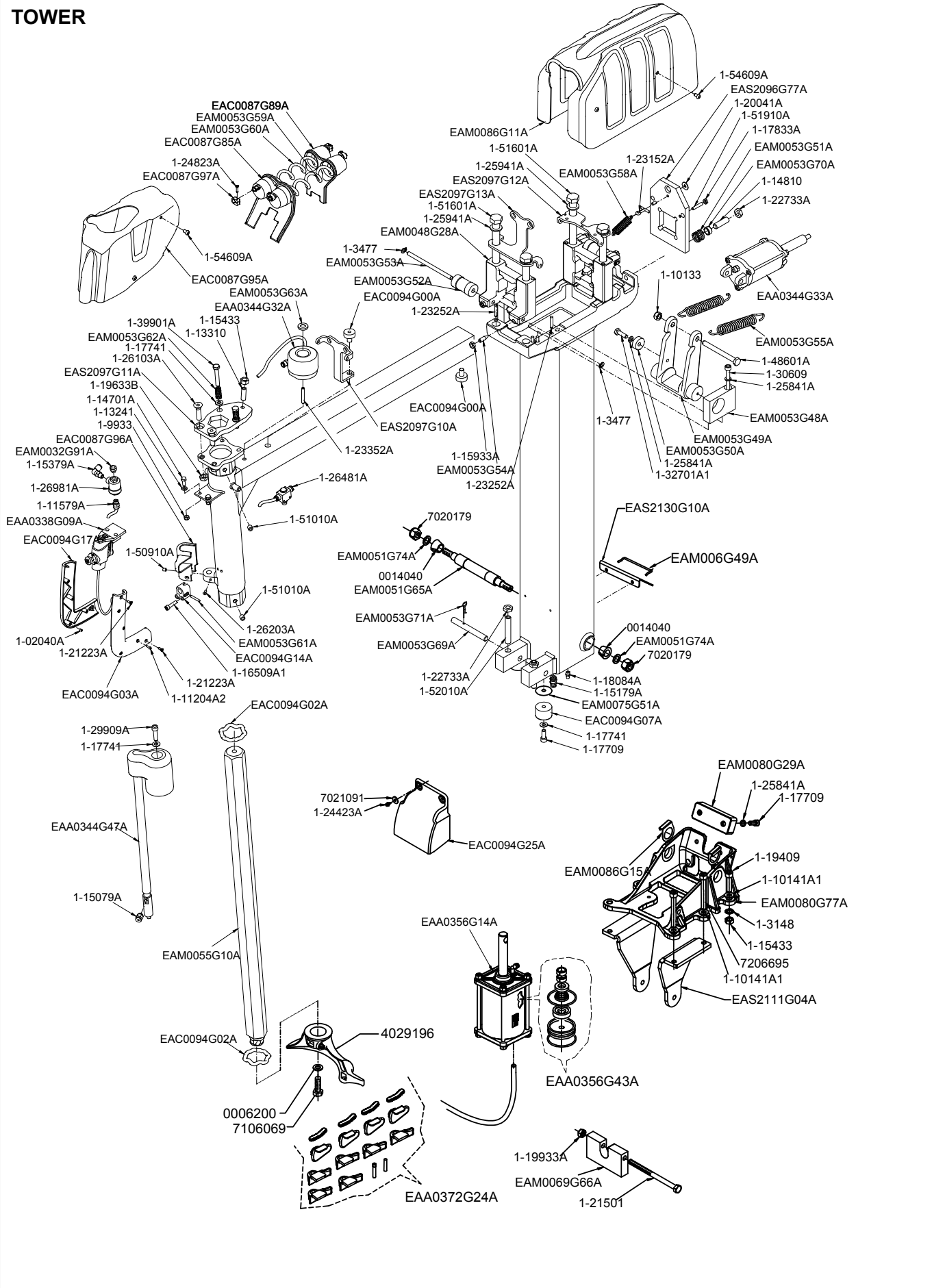
CABINET.....	1
TOWER.....	2
TURNTABLE.....	3
TRANSMISSION.....	4
MOTOR & PULLEY.....	5
MOTOR & PULLEY 2 SPEED.....	6
SURGE TANK.....	7
AIR GUAGE.....	8
BEAD BLAST PEDAL & VALVE.....	9
PEDAL VALVE.....	10
LUBRICATOR.....	11
BEAD BREAKER CYLINDER.....	12
PEDAL VALVE ASSEMBLY.....	13
PEDAL VALVE.....	15
BEAD BREAKER FOOT PEDAL ASSEMBLY.....	17
INVERTER ASSEMBLY.....	18

Blank Page

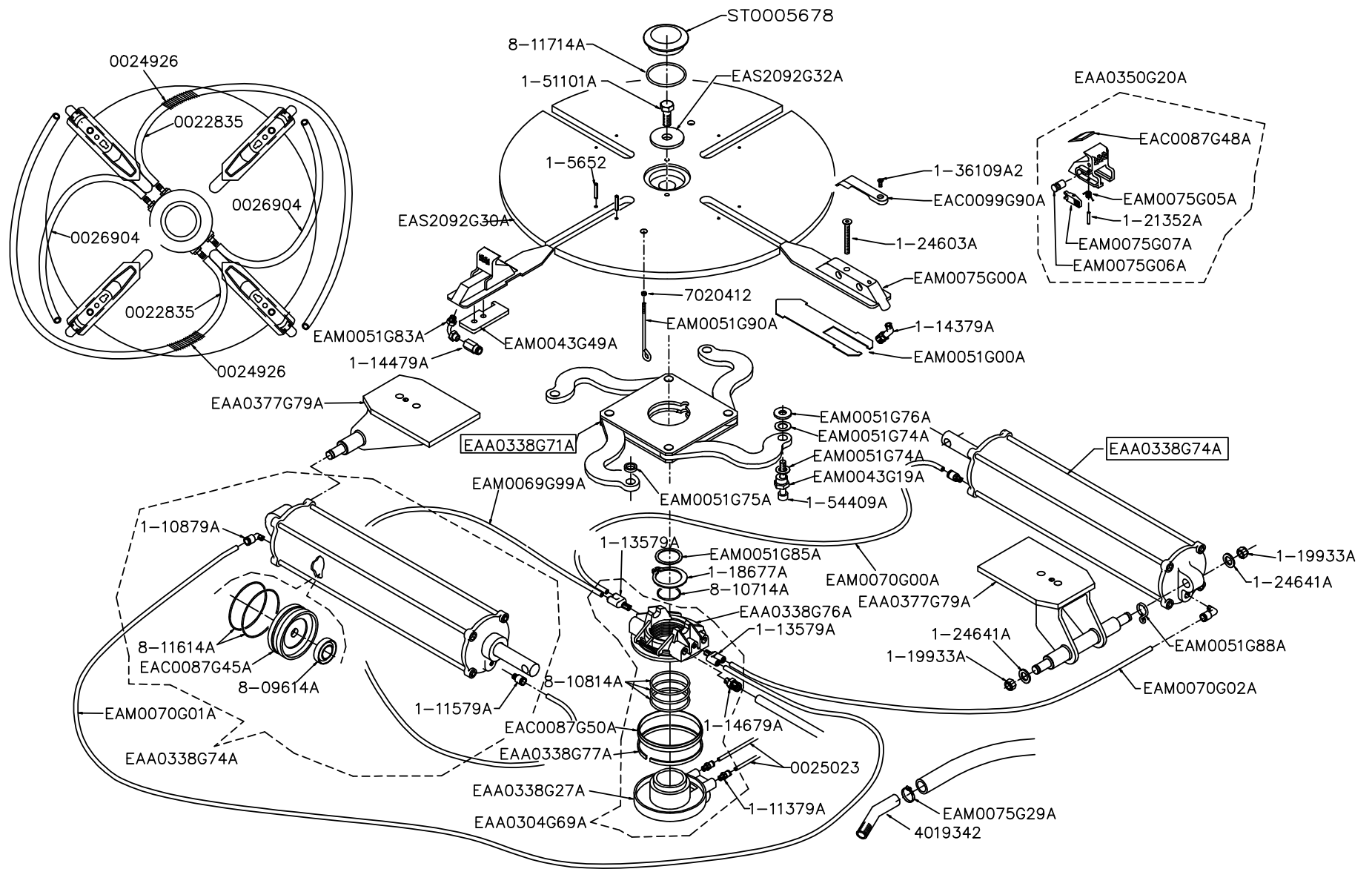
CABINET



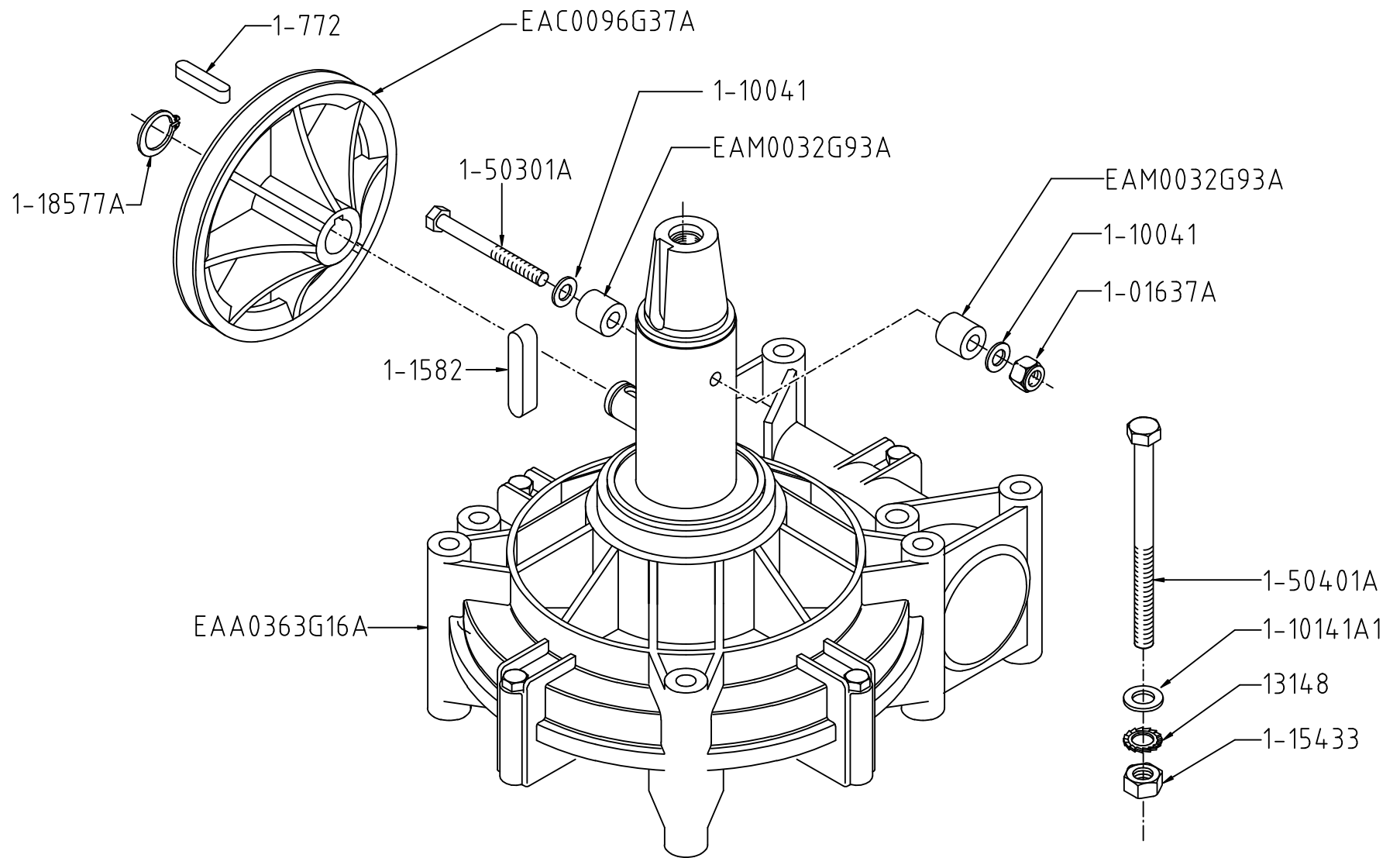
TOWER



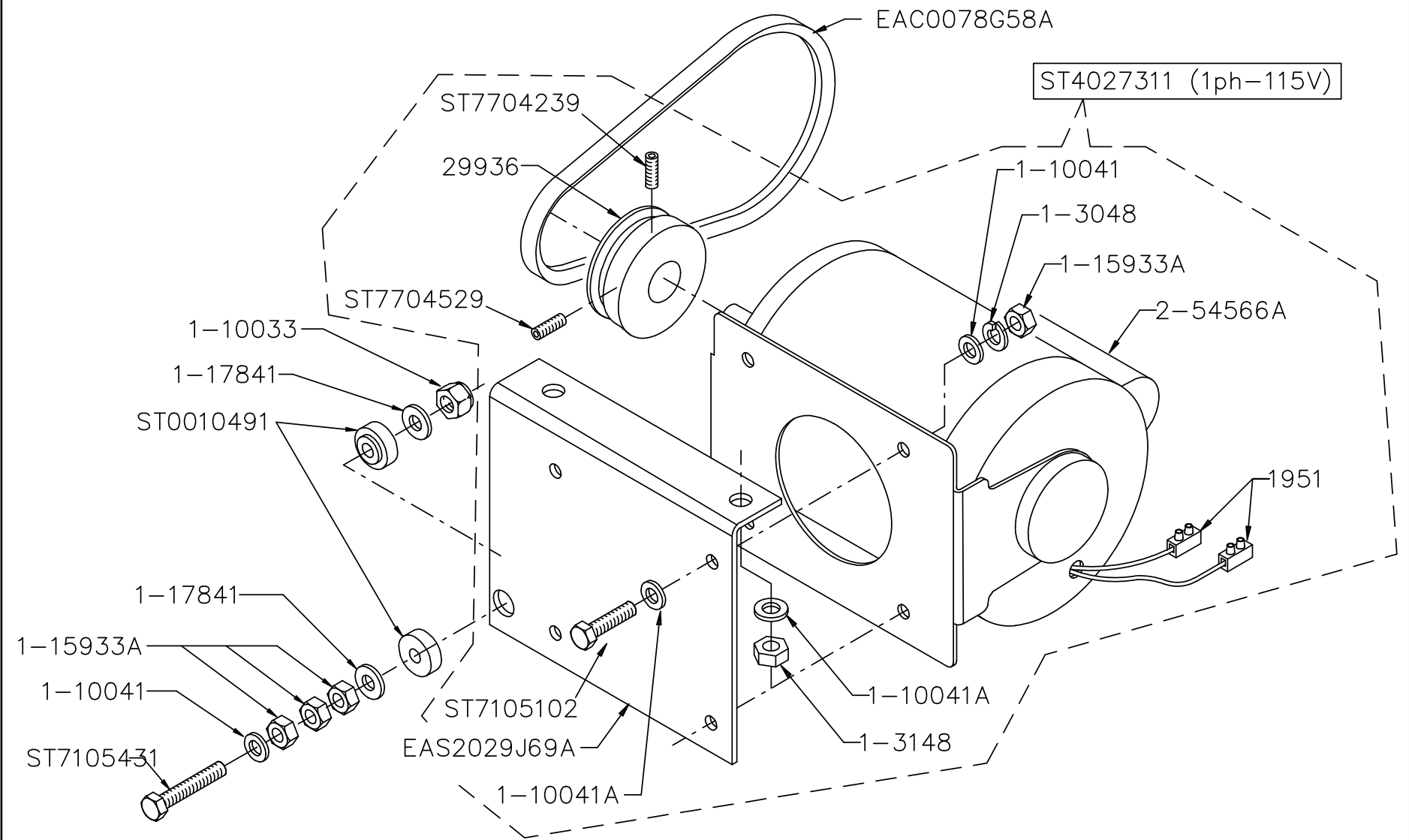
TURNTABLE



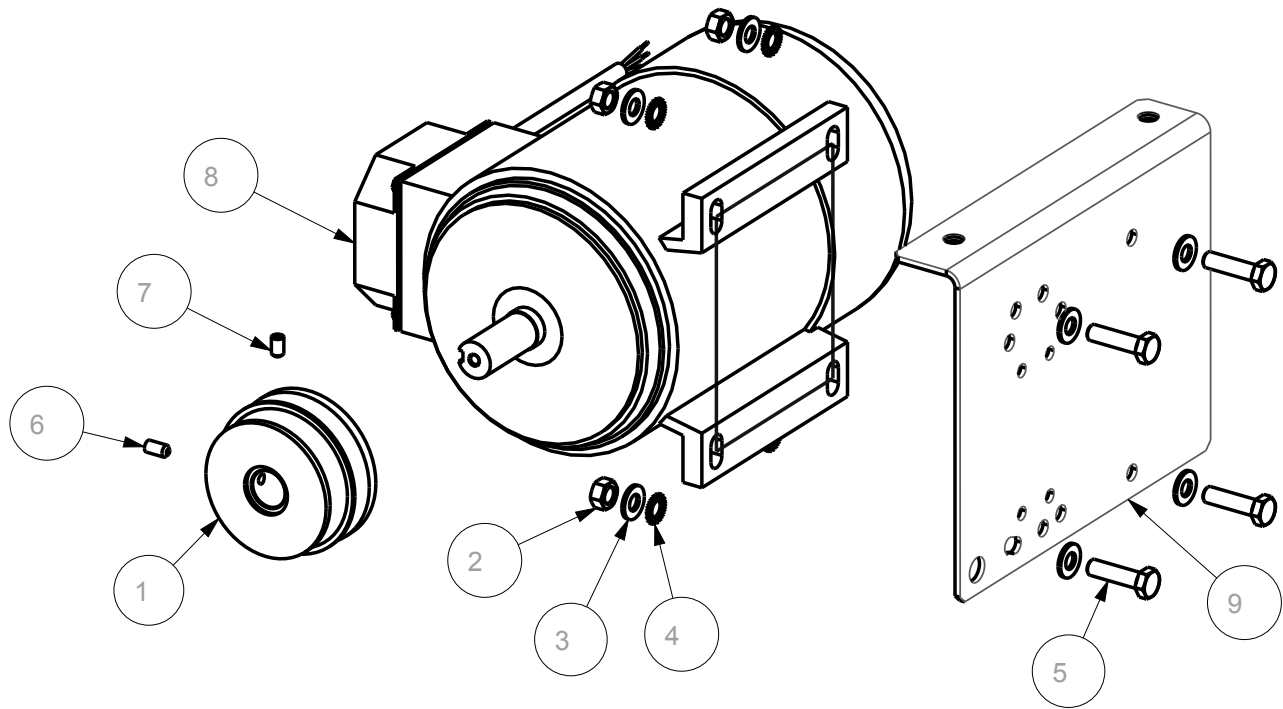
TRANSMISSION



MOTOR & PULLEY

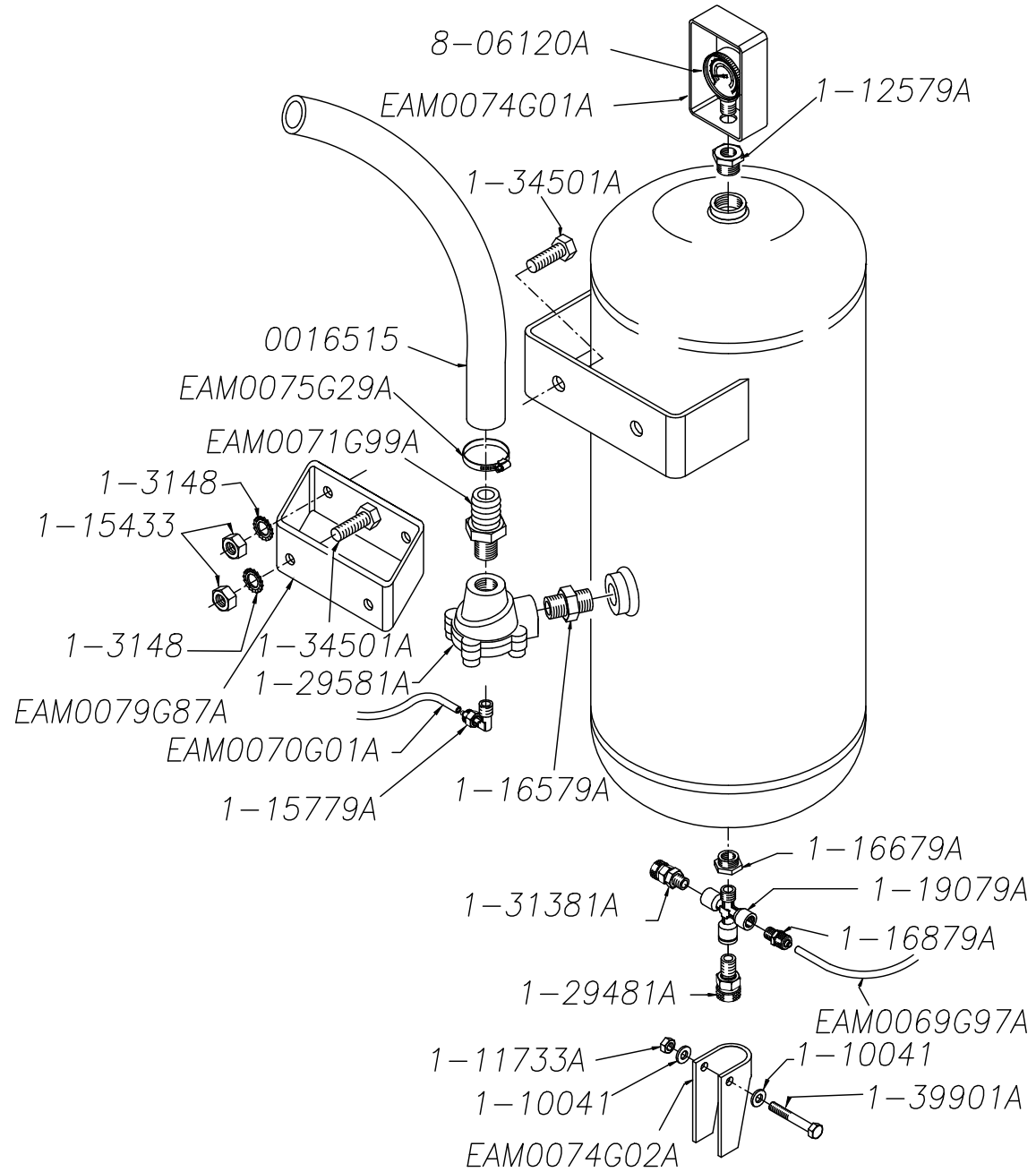


MOTOR & PULLEY 2 SPEED

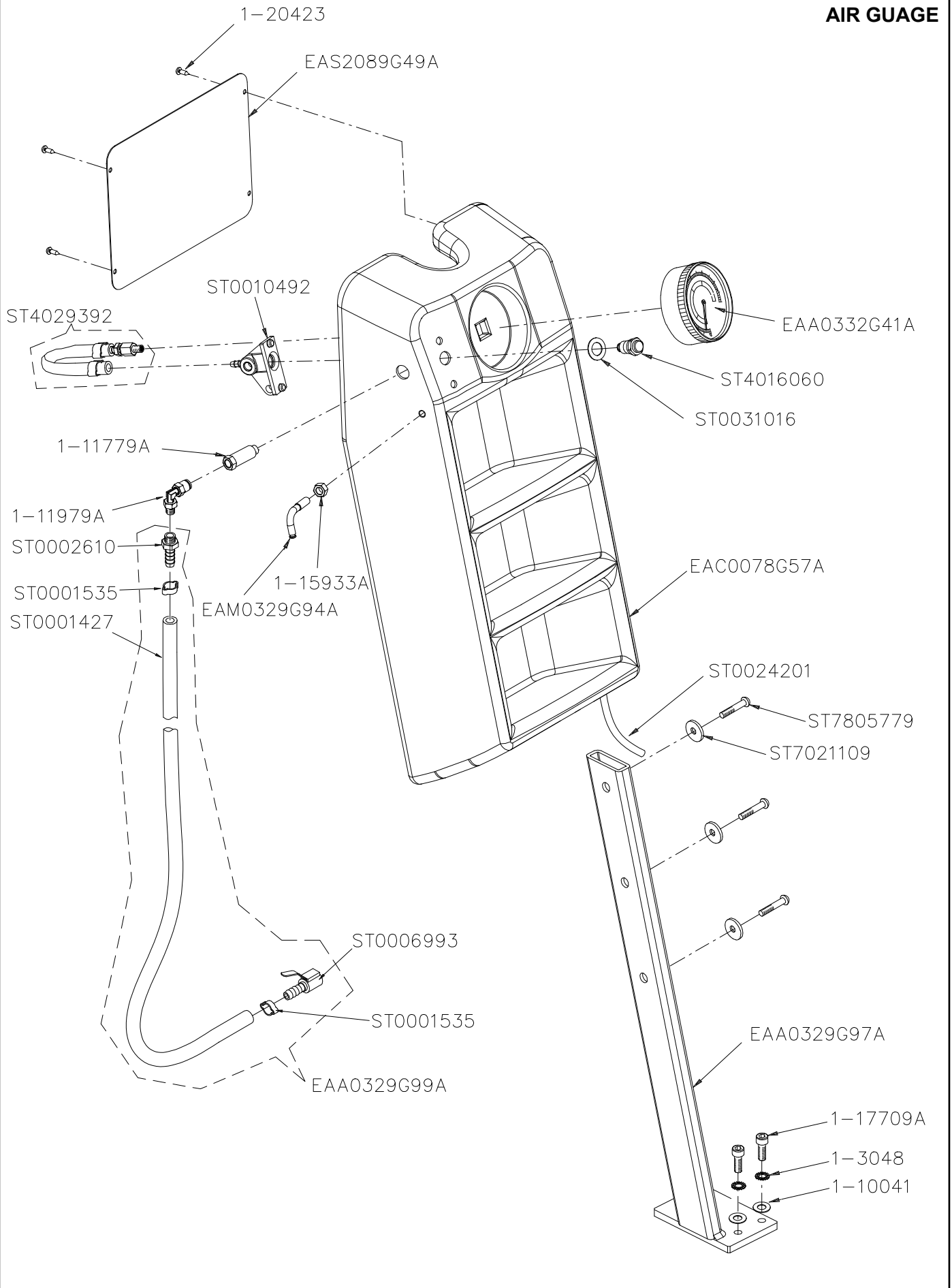


SYM	REQ	PART NO	DESCRIPTION
1	1	EAM0043G99A	PULLEY, DOUBLE
2	4	1-15933A	NUT M8 6S STAND WHITE ZINC
3	8	1-10041	WASHER D.8 UNI6592-69/DIN125
4	4	1-3048	WASHER SHAKEPROOF D8 *
5	4	1-32601	SCREW HEX HEAD MACHINE 8x30
6	1	1-50410A	SET SCREW HEX SOCKET M6X12
7	1	1-48910A	SCREW SET HEX SOC FLT PT, 6 X 10
8	1	2-49166A	MOTOR WITH CABLE FOR INVERTER
		EAW0282G24A	INVERTER - MOTOR CABLE CSA
9	1	EAS2029J69A	MOTOR SUPPORT

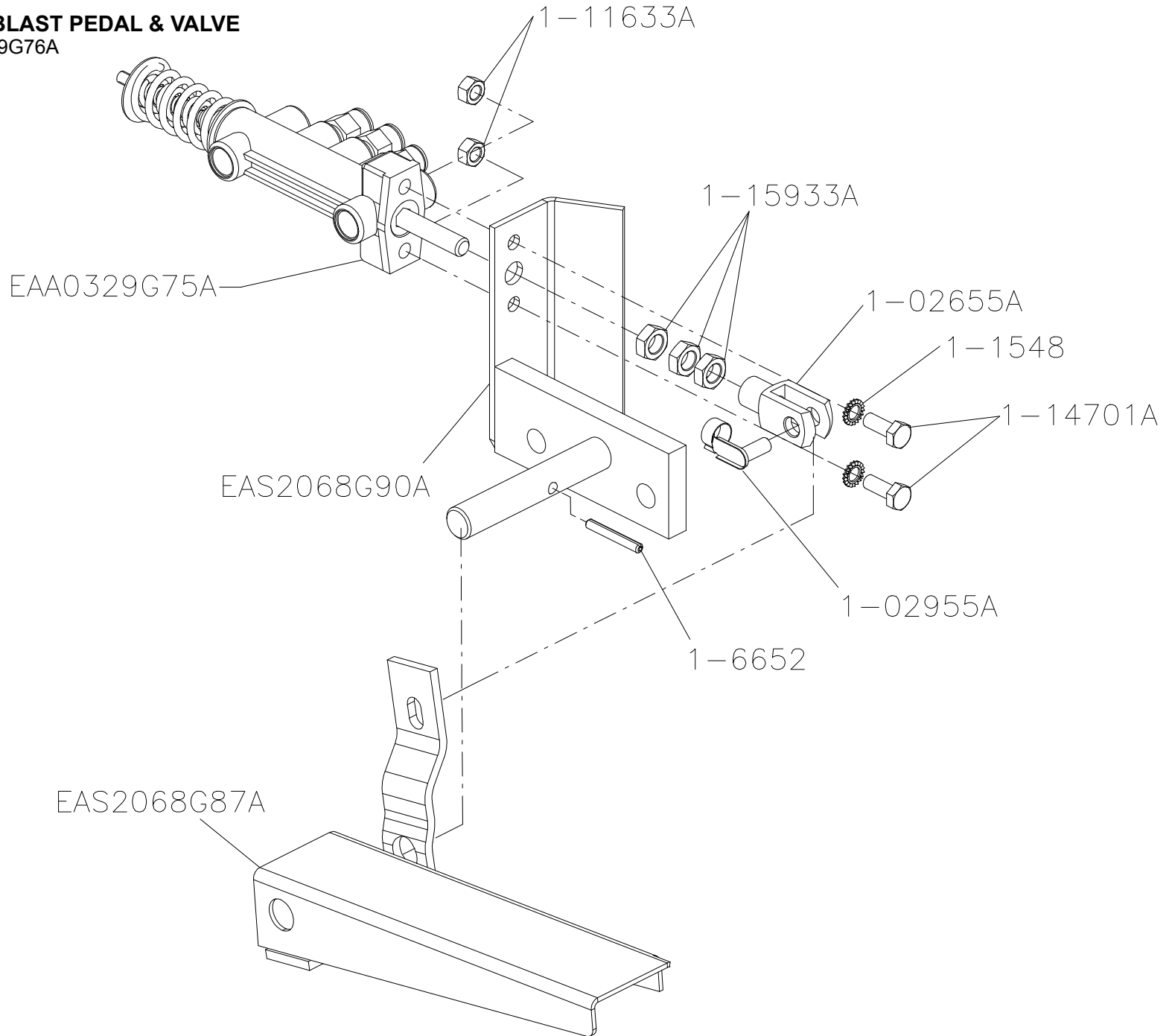
SURGE TANK



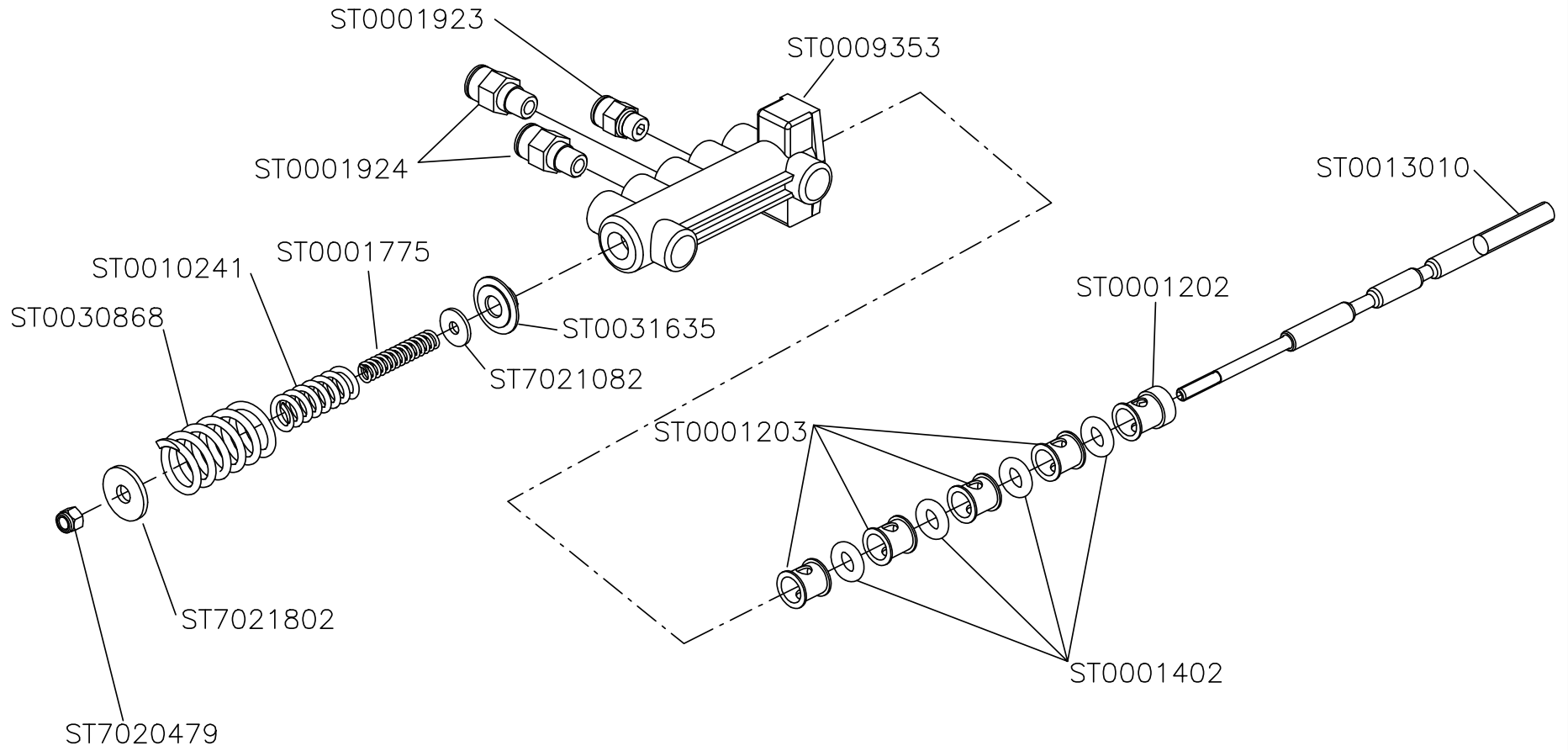
AIR GUAGE



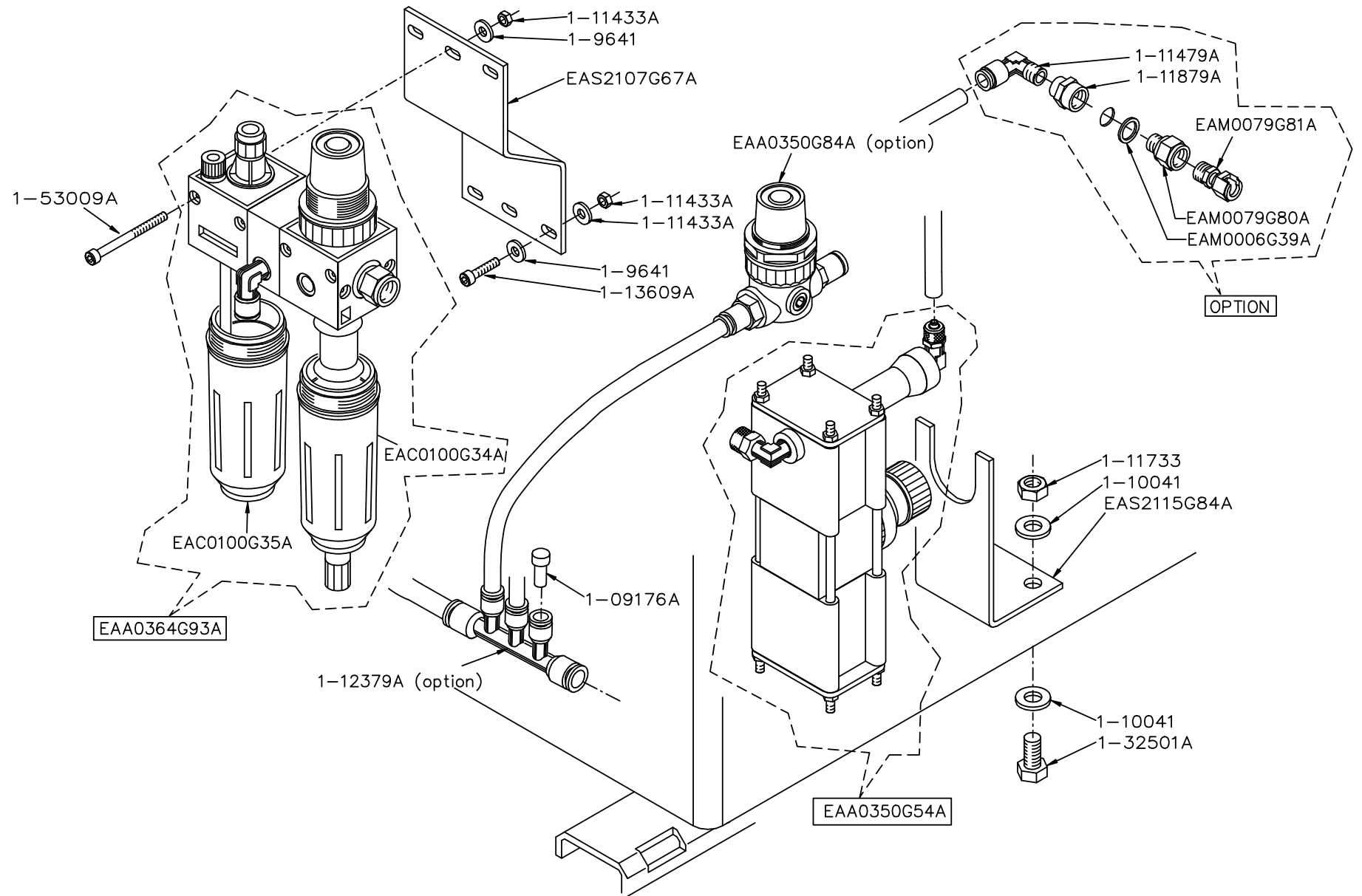
BEAD BLAST PEDAL & VALVE
EAA0329G76A



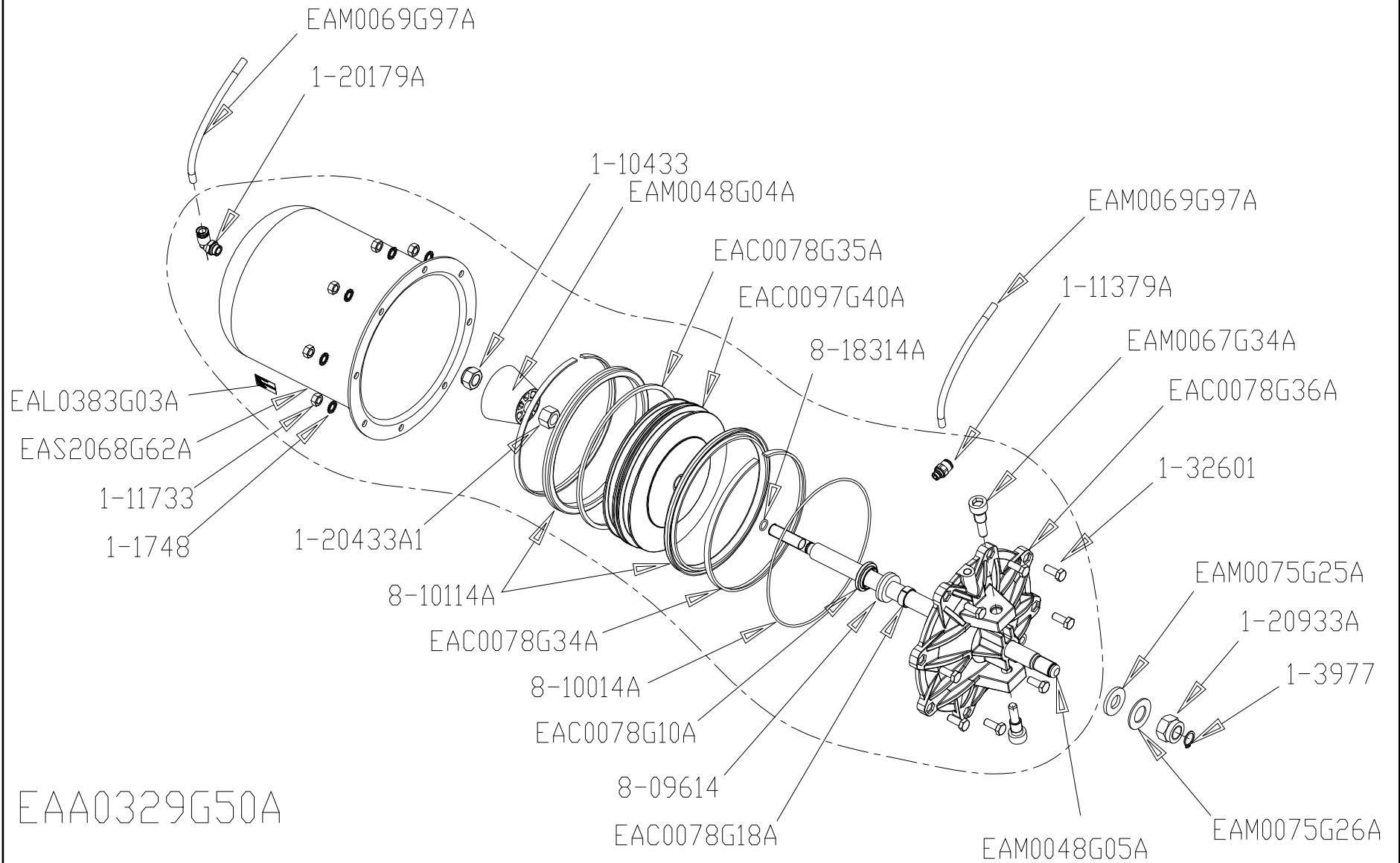
PEDAL VALVE



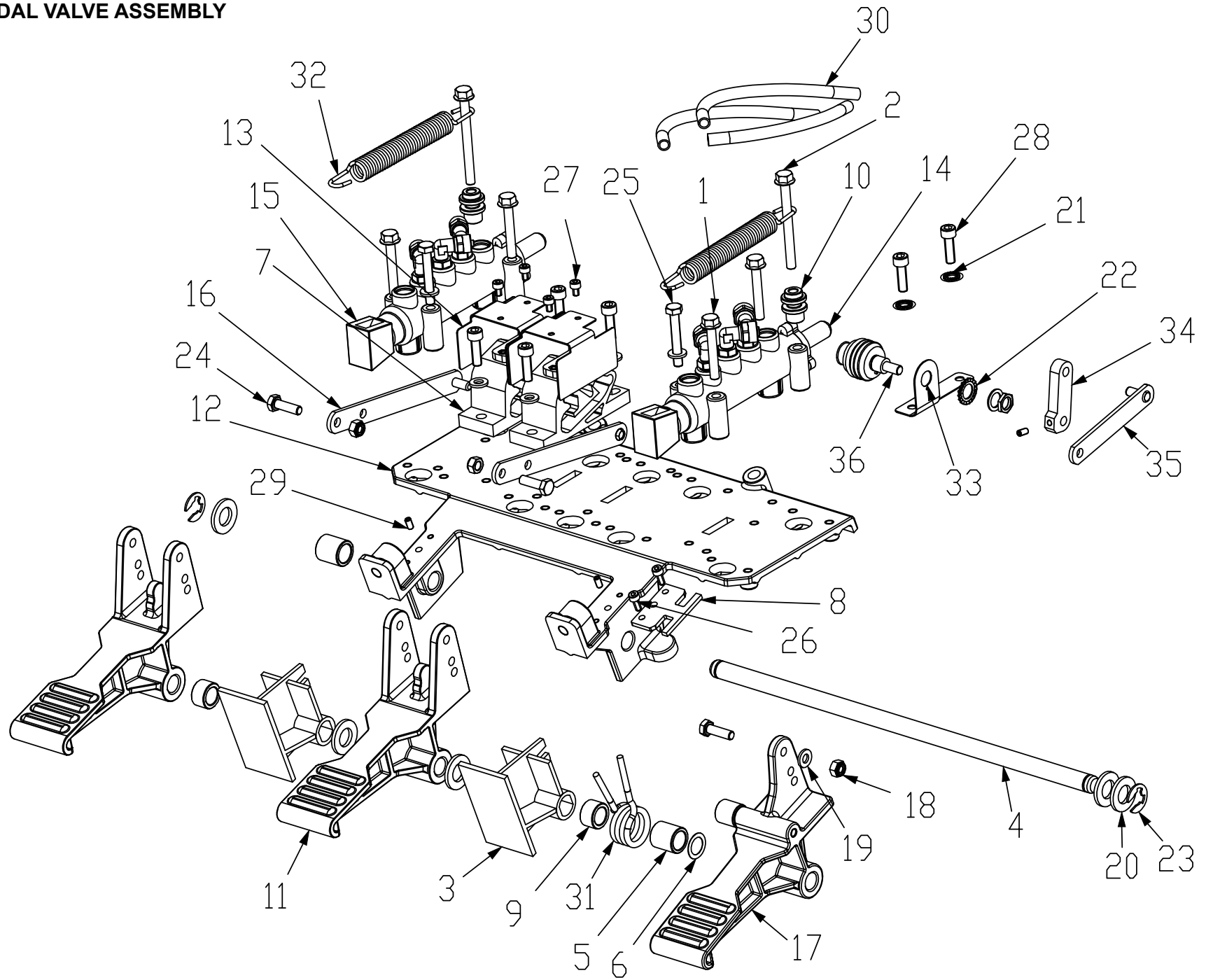
LUBRICATOR



BEAD BREAKER CYLINDER



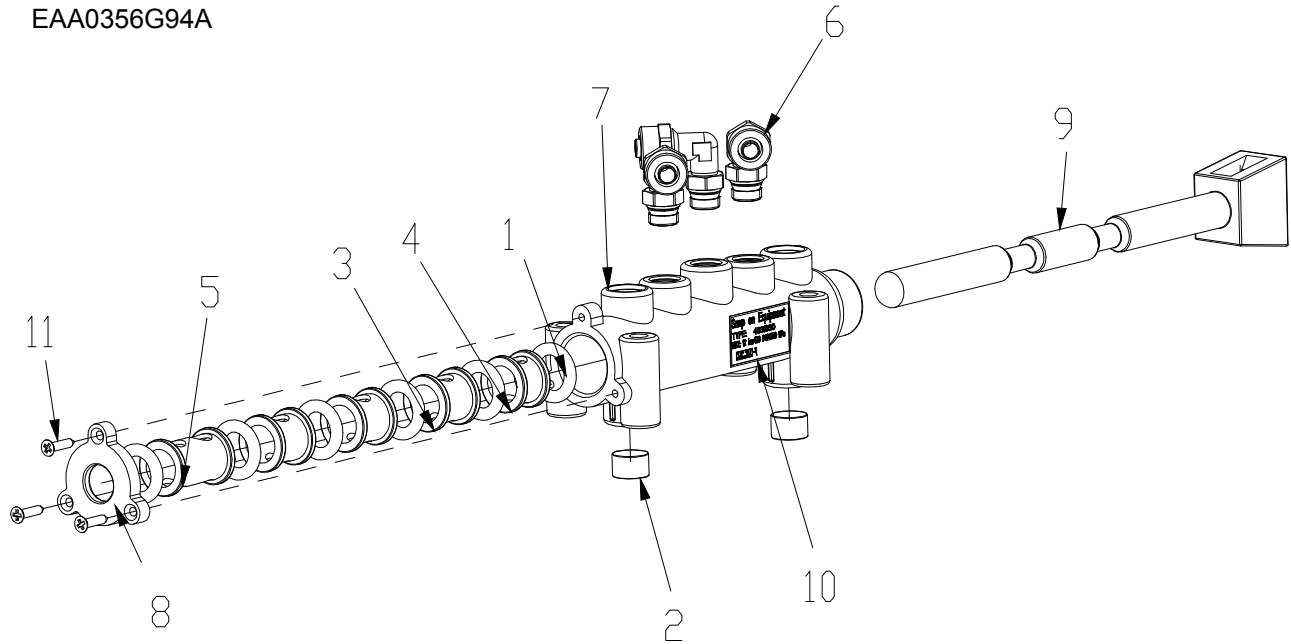
PEDAL VALVE ASSEMBLY



SYM	REQ	PART NO	DESCRIPTION
1	4	1-12626A	SCREW HEX FLANGE HEAD M6 x 40mm
2	2	1-12726A	SCREW HEX FLANGE HEAD M6 x 65mm
3	2	EAC0096G11A	SPACER-PEDAL
4	1	EAM0068G10A	SHAFT-HINGE PEDAL
5	2	EAM0048G79A	BUSHING CENTERING SPRING
6	1	1-25241A	SHIM RING D.12.2X18X0.3 MM DIN988
7	2	EAC0099G29A	CAM PEDAL
8	1	EAM0070G32A	COMMUTATOR SPRING GUIDE
9	2	EAM0070G46A	SPACER L=11 mm CENTERING SPRING
10	2	EAC0099G82A	SPRING FIXING PAWL
11	2	EAM0068G95A	STANDARD PEDAL MACHINED
12	1	EAM0068G80A	PEDAL ASSEMBLY SUPPORT - MACHINED
13	2	EAS2115G09A	PROTECTION SHEET FOR CAM
14	1	EAA0356G94A	VALVE 6x8 HOSES
15	1	EAA0356G96A	4x6 HOSES VALVE
16	2	EAS2111G73A	ROD POSITIONER PEDAL
17	1	EAA0356G92A	RIGHT SWITCH FOOT PEDAL
18	3	1-9933	NUT, PREVAILING TORQUE M6
19	7	1-9841	WASHER, PLAIN d6 ZINC.UNI6592-69
20	5	1-10241A	WASHER, ISO 7089 (DIN 125A)
21	2	1-1548	WASHER, EXT. SHAKEPROOF D6
22	1	1-3148	EXT. SHAKEPROOF D.10 DIN6798/A
23	2	1-18477A	RETAINING RING 10X1,2mm THK (A2R) BLK
24	3	1-14801A	SCREW, HEX HEAD MACHINE M6x20
25	2	1-31301A	SCREW TE 6X40 8G
26	2	1-13409	SCREW, HEX SOCKET CAP HEAD, M4X10 A2J
27	4	1-46809	Screw-HSHC M4x6 8.8 -A2J
28	6	1-16409	SCREW - HEX SOCKET HEAD CAP DIN 912
29	3	1-38910	SCREW M4X8SET CUP ZP
30	1	EAA0364G11A	HOSES KIT FOR FOOT PEDAL ASM 3P RACING
31	1	EAM0075G56A	SPRING, PEDAL SWITCH 2 SPEED
32	2	EAM0075G91A	SPRING RECALL PEDALS
33	1	EAS2132G60A	POTENTIOMETER SUPPORT
34	1	EAS2132G65A	POTENTIOMETER ROD
35	1	EAS2132G66A	ROD POTENTIOMETER PEDAL
36	1	EAW0282G16A	PEDAL CABLE WITH POTENTIOMETER

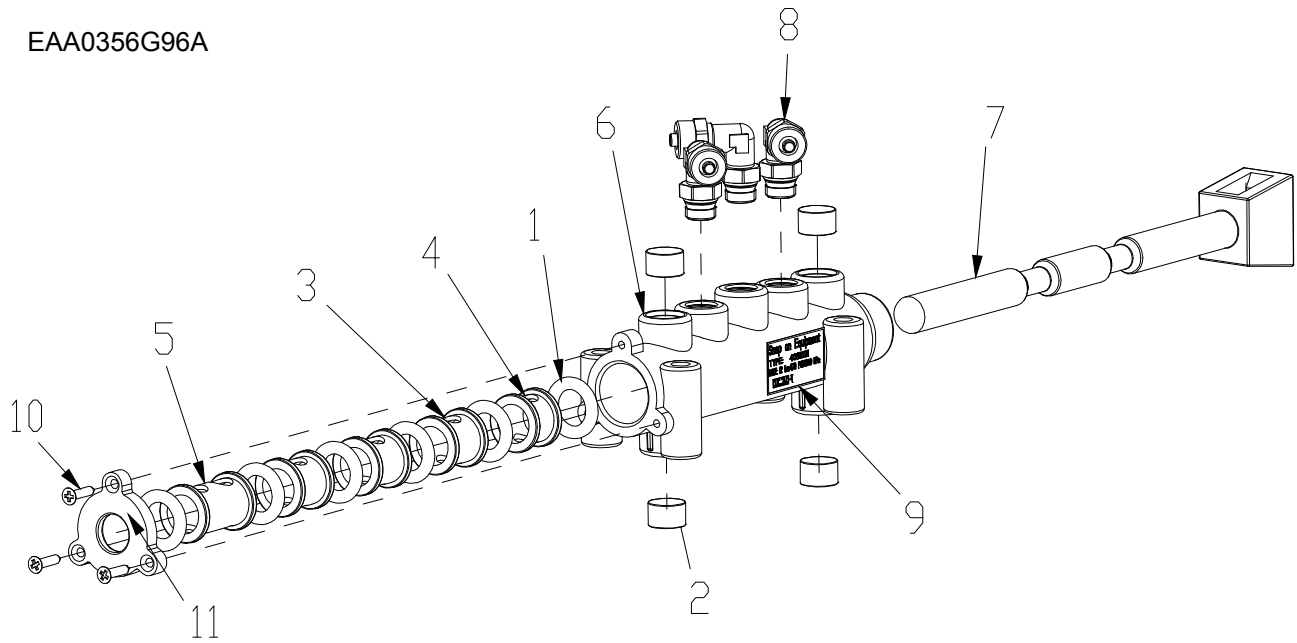
PEDAL VALVE

EAA0356G94A



SYM	REQ	PART NO	DESCRIPTION
1	6	8-11014A	SEAL - OR
2	4	EAC0097G82A	WASHER MUFFLER D.12
3	3	EAC0097G78A	SPACER OR
4	1	EAC0097G77A	SPACER OR
5	1	EAC0097G79A	SPACER OR
6	3	1-17279A	FITTING "L" 6X8 1/8
7	1	EAC0099G30A	HOUSING BEAD BREAKER VALVE
8	1	EAC0099G31A	VALVES COVER
9	1	EAM0071G96A	VALVES ROD MACHINED
10	1	EAL0412G82A	4031030 VALVE LABEL
11	3	1-25123A	SELF-TAPPING SCREW 2,9x13

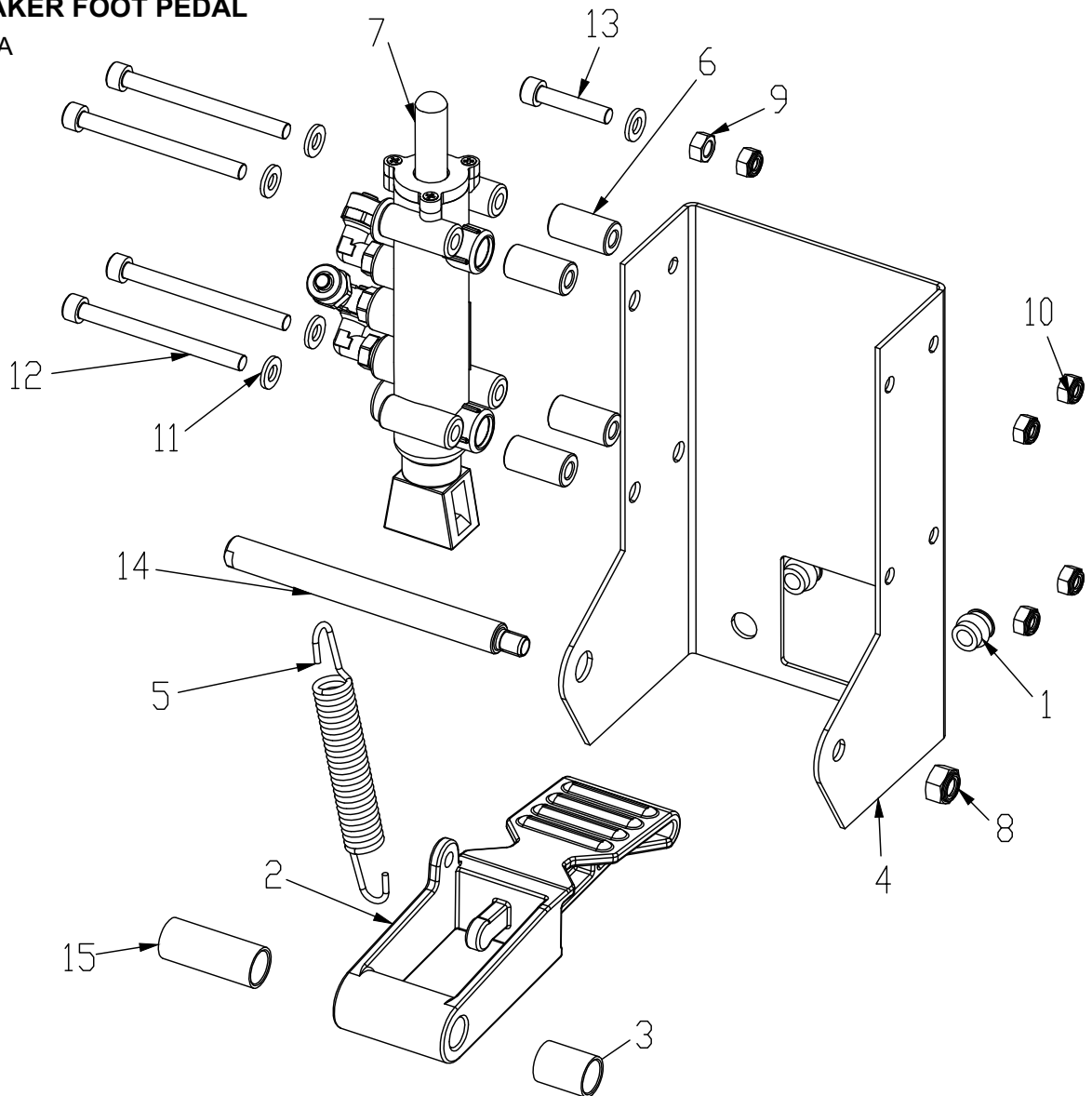
EAA0356G96A



SYM	REQ	PART NO	DESCRIPTION
1	6	8-11014A	SEAL - OR
2	4	EAC0097G82A	WASHER MUFFLER D.12
3	3	EAC0097G78A	SPACER OR
4	1	EAC0097G77A	SPACER OR
5	1	EAC0097G79A	SPACER OR
6	1	EAC0099G33A	HOUSING TURNTABLE/TILTING VALVE
7	1	EAM0071G96A	VALVES ROD MACHINED
8	3	1-18879A	FITTING - L 4x6 1/8"
9	1	EAL0412G83A	4031031 VALVE LABEL
10	3	1-25123A	SELF-TAPPING SCREW 2,9x13
11	1	EAC0102G08A	YELLOW VALVES COVER

BEAD BREAKER FOOT PEDAL

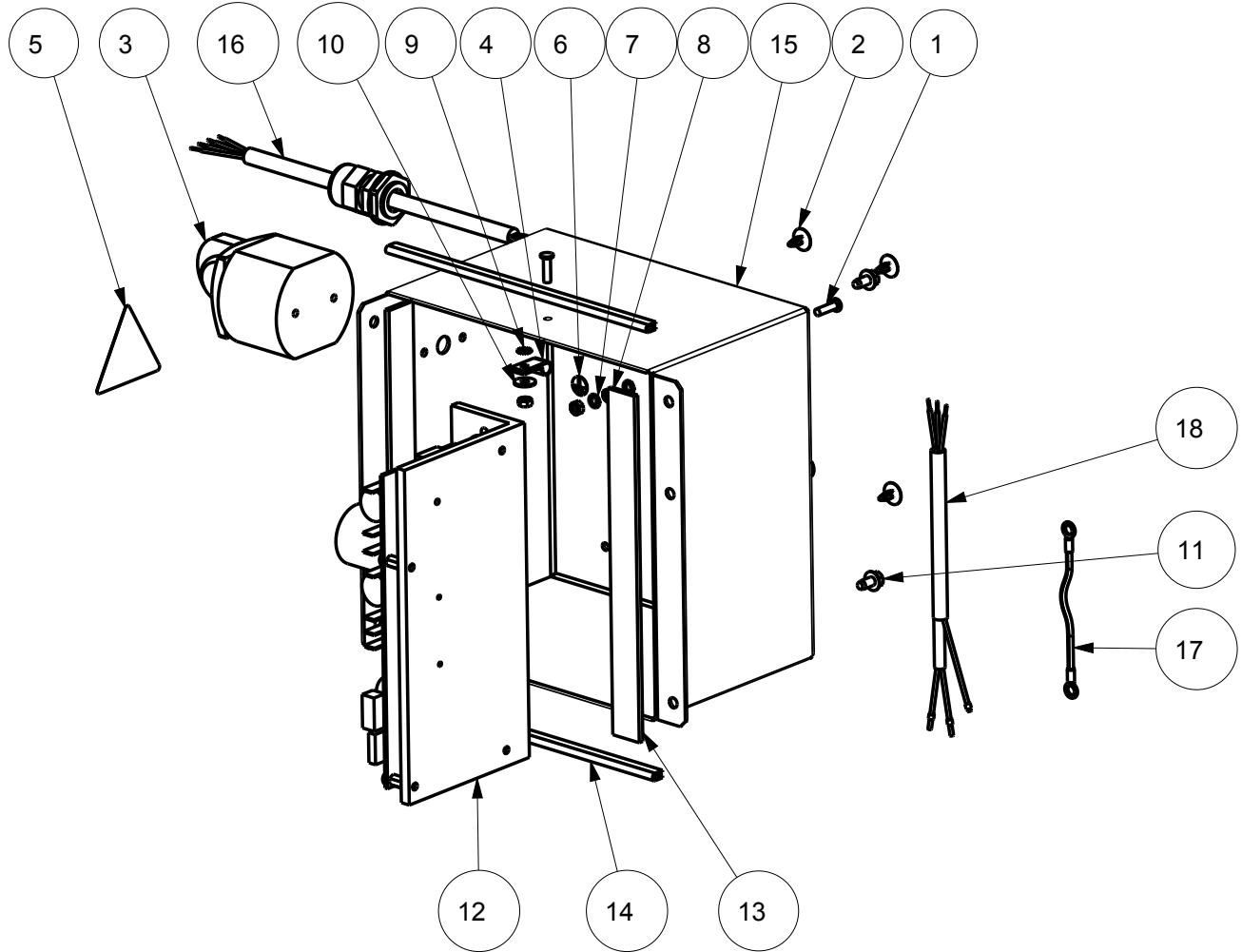
EAA0362G31A



SYM	REQ	PART NO	DESCRIPTION
1	2	1-18359A_SQUEEZED_25	SELF CLINCHING NUT (M 8)
2	1	EAM0068G96A	BEAD BREAKER PEDAL - MACHINED
3	1	EAM0074G76A	SPACER Ø13 L=21
4	1	EAS2115G46A	BEAD BREAKER SUPPORT SHEET
5	1	EAM0074G78A	SPRING WIRE Ø2,2 L=115 mm
6	4	EAM0074G79A	SPACER Ø6.1 L=25
7	1	EAA0356G94A	VALVE 6x8 HOSES
8	1	1-10033	HEX NUT PREVAILING TORQUE M8
9	1	1-11633A	NUT-HEX. M6 6S
10	5	1-9933	NUT, PREVAILING TORQUE M6
11	5	1-9841	WASHER, PLAIN d6 ZINC.UNI6592-69
12	4	1-17409A	SCREW TCEI 6X70 8G
13	1	1-16609A	SCREW TCEI 6X30 8G
14	1	EAM0075G89A	BEAD BREAKER PEDAL SHAFT
15	1	EAM0075G90A	FOOT PEDAL SPACER

INVERTER ASSEMBLY

EAA0383G04A



SYM	REQ	PART NO	DESCRIPTION
1	2	1-54801A	SELF-CLINCHING STUD M4X16
2	4	1-12176A	PLUG, Ø4.6mm BLACK NYLON
3	1	2-14861A	BIPOLAR POWER SWITCH
4	1	5-08745A	ALLUMINIUM CABLE CLAMP
5	1	8-23562A	STICKER, DANGER VDE
6	1	8-23762A	LABLE, GROUND(B)
7	2	1332041	BEVELED SERRATED WASHER
8	3	1-15833A	HEX NUT M4, BRASS
9	1	1-1348	LOCKWASHER D4
10	1	1-16441	WASHER 4X12X1
11	2	666204	Cutting Screw Hexagon M6SF-TT M5x10 FZB
12	1	EAA0378G69A	INVERTER AND HEATSINK
13	2	EAM0087G08A	SELF-ADHESIVE SEALING 3x20
14	2	EAM0087G09A	U PROFILE 2 mm GASKET RUBBER
15	1	EAS2132G53A	INVERTER BOX
16	1	EAW0282G20A	MAIN CABLE CSA
17	1	EAW0282G22A	CABLE, EARTH FOR CABINET
18	1	EAW0282G23A	MAIN SWITCH-INVERTER CABLE

Snap-on
Equipment

309 Exchange Avenue
Conway, AR 72032