

CHAPTER 4

PARTS

PARTS BY PICTORIAL

This chapter describes assemblies/subassemblies/parts considered replaceable at on-site field installation.

NOTE: *At the end of the Part Number, is” –SP”. This is for White Industries. Please drop the” –SP” when using the EquiServ system.*

NOTE: *The following is a breakdown description of the Serial Number.*

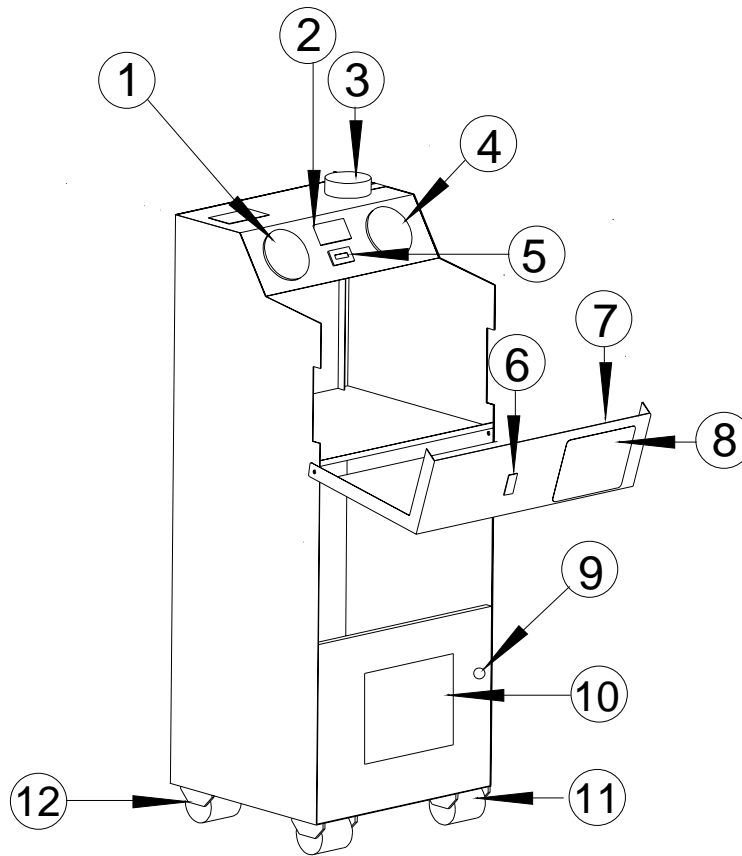
Serial # Location – Left hand side (While facing unit).

Example

In 1992 to present a 9 digit number was used.

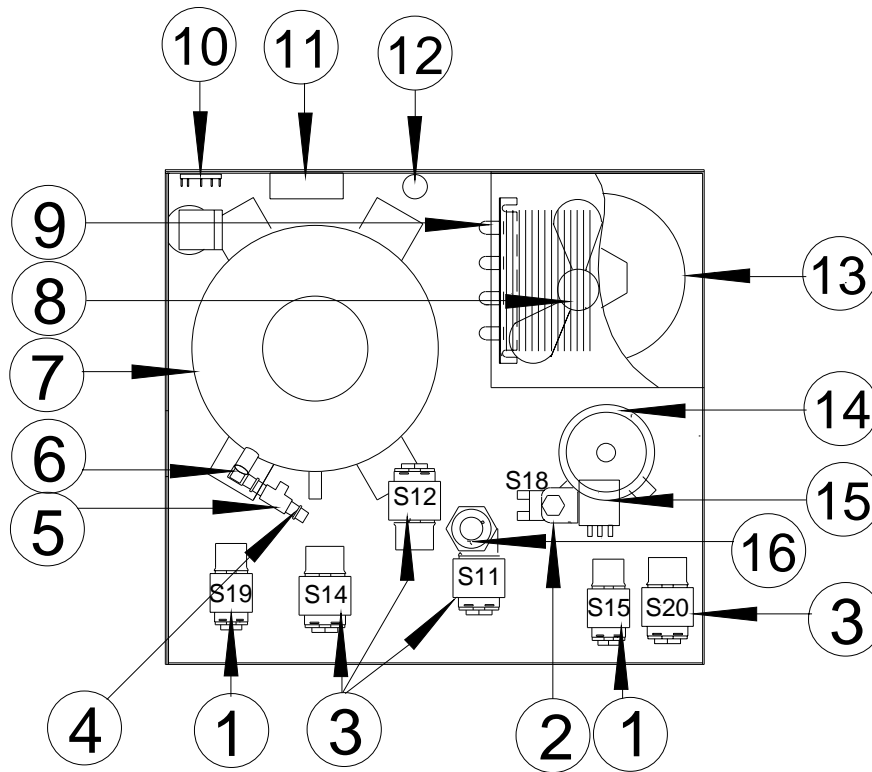
- | | |
|--|--|
| 1. 1 st digit = Year | B=1992, C=1993, ... |
| 2. 2 nd digit = Month | A=January, B=February, ... |
| 3. 3 rd digit = Make | W=White, S=Snap-On, F=Ford, H=Honda |
| 4. 4 th / 5 th digit = Model | 70 = 1070XL/1075XL |
| 5. 6 th thru 9 th = Lot # | Number of unit coming off production line. |
| 6. EXAMPLE: BAW701301 = Built in 1992, January, W, 1070XL/1075XL -, 301 lot # | |

FRONT VIEW



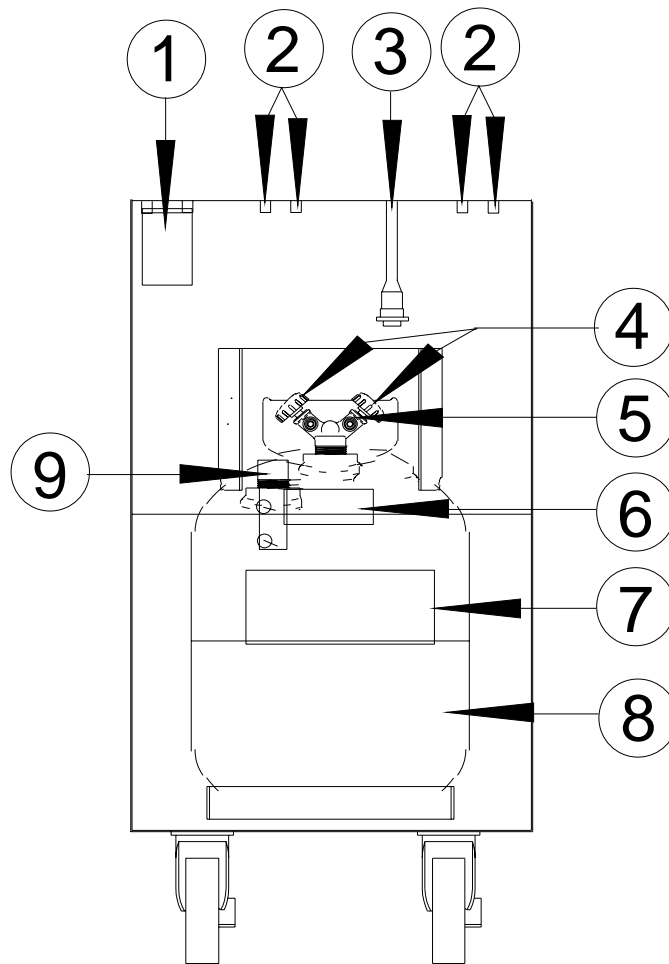
| ITEM | DESCRIPTION | PART NUMBER | ITEM | DESCRIPTION | PART NUMBER |
|------|------------------------------|--------------|------|--|--------------------------|
| 1. | Gauge, Low | K15032-SP | 6. | Switch, On/Off Rocker (Refrigerant Select) | K30058-SP |
| 2a. | Label, Hour-meter (R12) | K99704-SP | 7a. | Board, Recovery (Replaces K1101147) | K1101180-SP |
| 2b. | Label, Hour-meter (R134a) | K99705-SP | 8. | Membrane, Recovery Board, Main (Replaces K1101148) | K30006-SP K1101178-SP |
| 3a. | Filter, desicant (Pkg. of 2) | K16200-SP | 9. | Lock & Key | K35070-SP |
| 3b. | O-Ring, screen filters | K16208-SP | 10a. | Decal, R134a (Refrig Mgnt) | K99702-SP |
| 3c. | Shell, filter | K16203-01-SP | 10b. | Decal, R12 (Refrig Mgnt) | K99703-SP |
| 4. | Gauge, High | K15022-SP | 11. | Caster, w/brake | K35252-SP |
| 5. | Meter, Hour | K30276-SP | 12. | Caster, w/o brake | K35251-SP |

TOP VIEW



| ITEM | DESCRIPTION | PART NUMBER | ITEM | DESCRIPTION | PART NUMBER |
|------|---------------------------------|--------------|------|-------------------------------|-------------|
| 1. | Solenoid, High, Pres.(250psi) | K60065-SP | 9. | Condenser | K40002-SP |
| 2. | Solenoid, (N.O. oil return) | K60058-SP | 10. | A.C. Terminal (Bus bar) | K30324-SP |
| 3. | Solenoid, Low Pres. (140psi) | K60060-SP | 11. | Relay, 6-Post | K30323-SP |
| 4. | Fitting, 1/8" to tube w/ o-ring | K10681-SP | 12. | Kit, (Cap, Ther.O.L. & Relay) | K30303-SP |
| 5. | T-fitting | K10653-SP | 13. | Heater blanket, small | K30024-SP |
| 6. | Check valve (Replaces all) | K60119-SP | 14. | Oil Separator | K16608-SP |
| 7. | Compressor, Super 1/3hp | K16010-01-SP | 15. | Switch, High Pres. (435psi) | K30255-SP |
| 8. | Fan, (4") | K32511-SP | 16. | Transducer, Pressure | K3020006-SP |

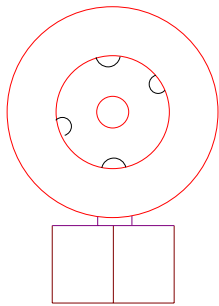
LOWER CABINET



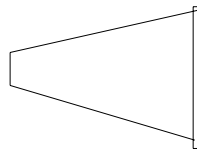
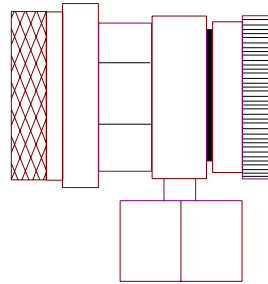
| ITEM | DESCRIPTION | PART NUMBER | ITEM | DESCRIPTION | PART NUMBER |
|------|-------------------------|-------------|------|----------------------------|-------------|
| 1. | Beaker, cup | K90301-SP | 8a. | Tank, (R134a/50lb./Blu) | K16429-SP |
| 2. | Bulk Head fittings | K10681-SP | 8b. | Tank, (R12/50lb.) | K16419-SP |
| 3. | Cord, Tank Full | K1101031-SP | 9. | Board, Tank Full (Probe) | K1101098-SP |
| 4. | Knobs, (Red & Blue) | K90023-SP | N.S. | R.V. Label, (R134a Virgin) | K99701-SP |
| 5. | Valves stems | K60192-SP | N.S. | R.V. Label, (R12 Virgin) | K99700-SP |
| 6. | Label, (Vapor / Liquid) | K99729-SP | N.S. | R.V. Power Cord | K30199-SP |
| 7. | Label, (Danger) | K99363-SP | | | |

R.V. = REAR VIEW

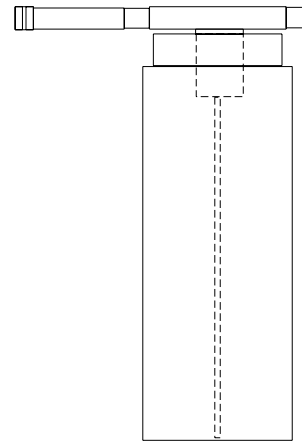
ACCESSORIES



1.



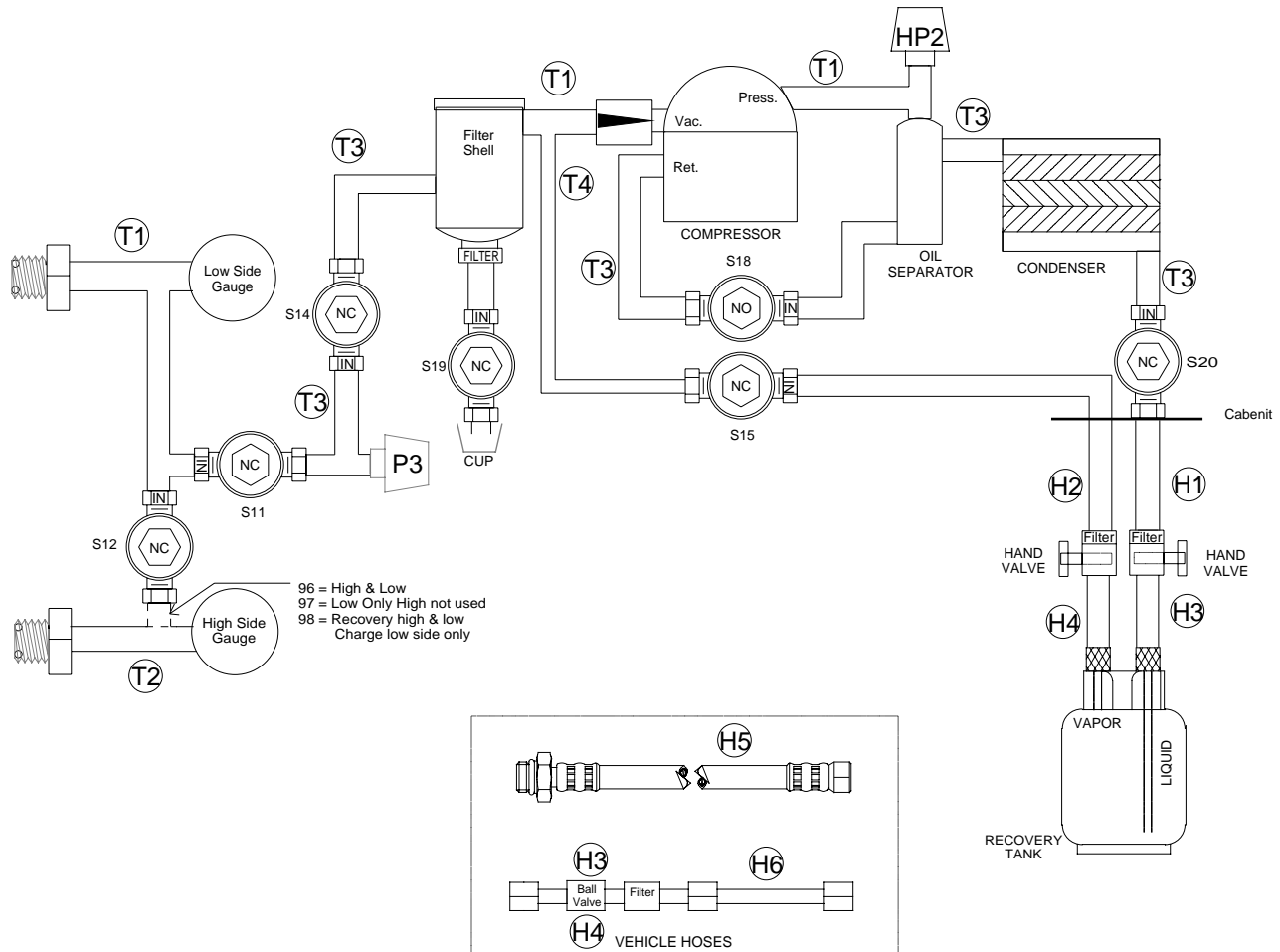
3.



2.

| ITEM | DESCRIPTION | PART NUMBER | ITEM | DESCRIPTION | PART NUMBER |
|------|-----------------------------|--------------|------|---|-------------|
| 1a. | R134a Vehicle Adapter, High | K05000-SP | 3. | Micron Filter | K90420-SP |
| 1b. | Same as: | 0647-0287-07 | NS | Cover, Protective | K99082-SP |
| 1c. | R134a Vehicle Adapter, Low | K05100-SP | NS | Copper O-Ring | K45030-SP |
| 1d. | Same as: | 0647-0287-08 | NS | Depressor & Gasket Kit for Hose ends R12, R134a (10) | K45351-SP |
| 2a. | Oil Charge Bottle, R12 | K01550-SP | | | |
| 2b. | Oil Charge Bottle, R134a | K01555-SP | | | |

HOSE AND TUBE PART NUMBERS



| ITEM | DESCRIPTION | PART NUMBER | ITEM | DESCRIPTION | PART NUMBER |
|------|---------------------------------|---------------|------|-----------------------------|---------------|
| H1. | Hose, (Red 24" R134a) | K24107-003-SP | H5a. | Hose, Red 8' R134a | K24107-005-SP |
| H1. | Hose, (Yel. 24") | K24207-317-SP | H5b. | Hose, Blue 8' R134a | K24007-005-SP |
| H2a. | Hose, (Blue 24" R12 & R134a) | K24007-003-SP | H6a. | Hose, Red 8' R12 | K25107-123-SP |
| H2b. | Hose, (Yel. 24") | K24207-309-SP | H6b. | Hose, Blue 8' R12 | K25007-143-SP |
| H3a. | Ball Val. & Hose, R134a Yel. 3" | K60083-SP | T1. | Tube, 18" .085" I.D. | K40848-SP |
| H3b. | Hose, (Blue, 3" R12) | K60108-SP | T2. | Tube, 7" .085 I.D. | K40807-SP |
| H3c. | Hose, (Blue, 3" R134a) | K24007-300-SP | T3. | Tube, 12" .085" I.D. | K40852-SP |
| H4a. | Ball Valve & Hose R12, Yel 3" | K60082-SP | T4. | Tube, Coiled Capillary 042" | K40833-SP |
| H4b. | Hose, (Red, 3" R12) | K60107-SP | | | |
| H4c. | Hose, (Red, 3" R134a) | K24107-300-SP | NS | O-Rings, (Internal) | K45030-SP |
| H4d. | Hose, (J) | EAH0033I36B | NS | O-Rings, (External) | K45035-SP |
| H4e. | Hose, (Blue, 30" W) | EAH0033L62A | NS | Depressors & o-rings | K45351-SP |

J = Jem, W = White

PARTS IN ALPHABETICAL ORDER

| DESCRIPTION | PART NUMBER | COMMENTS |
|---------------------------------|--------------------|------------------------------------|
| A.C. Terminal | K30324 | Bus bar |
| Ball Valve & Hose | K60082-SP | R12, Yel 3" |
| Ball Valve & Hose | K60083-SP | R134a Yel.3" |
| Ball Valve & hose | K60107-SP | Red, 3" |
| Beaker, cup | K90301-SP | Plastic |
| Board, Recovery | K1101180-SP | Replaces K1101146 |
| Board, Main | K1101178-SP | Replaces K1101148 |
| Board, Tank Full | K1101098-SP | In tank |
| Bulk Head fitting | K10681-SP | Fitting, 1/8" to tube w/ o-ring |
| Caster, | K35251-SP | w/o/brake |
| Caster, | K35252-SP | w/brake |
| Check valve | K60119-SP | Replaces all |
| Compressor, Super | K16010-01-SP | 1/3-hp |
| Condenser | K40002-SP | |
| Copper O-Ring | K45030-SP | Internal |
| Cord, Tank Full | K1101031-SP | |
| Cover, Protective | K99096-SP | |
| Decal, R12 | K99703-SP | R12 Refrigerant Management |
| Decal, R134a | K99702-SP | R134a Refrigerant Management |
| Depressor & Gasket Kit | K45351-SP | For Hose ends R12, R134a (10) |
| Fan, | K32511-SP | 4" |
| Filter, desicant | K16200-SP | Pkg. Of 2 |
| Fitting, 1/8" to tube w/ o-ring | K10681-SP | |
| Gauge, High | K15022-SP | R12/R134a |
| Gauge, Low | K15032-SP | R12/R134a |
| Heater blanket, small | K30024-SP | Filter |
| Hose | K24007-003 | Blue 24" |
| Hose | K24007-005-SP | Blue 8' R134a |
| Hose | K24007-300 | Blue, 3" R134a |
| Hose | K24107-003-SP | Red 24" R 134a |
| Hose | K24107-005-SP | Red 8' R134a |
| Hose | K24107-300 | Red, 3" R134a |
| Hose | K24207-309-SP | Yel. 24" |
| Hose | K24207-317-SP | Yel. 24" |
| Hose | K25007-143-SP | Blue 8' R12 |
| Hose | K25107-123-SP | Red 8' R12 |
| Hose | K60108-SP | Blue, 3" R12 |
| Kit, pump accessories | K30303-SP | Cap./Ther. O.L./ Relay/Cov. & clip |
| Knob, Spinner control | K90050-SP | |
| Knobs, both | K90023-SP | On tank |
| Label | K1-99700-SP | R12 Virgin |
| Label | K1-99701-SP | R134a Virgin |
| Label, | K99363-SP | Danger |
| Label, | K99704-SP | Hour-meter |
| Label, | K99705-SP | Hour-meter R134a |
| Label, | K99729-SP | Vapor / Liquid) |
| Lock & Key | K35070-SP | |
| Membrane, | K30006-SP | Recovery |
| Meter Hour | K30276-SP | |
| Micron Filter | K90420-SP | |
| Oil Charge Bottle, | K01550-SP | R12 |
| Oil Charge Bottle, | K01555-SP | R134a |
| Oil Separator | K16608-SP | |

CHAPTER 4 PARTS

| | | |
|-----------------------------|--------------|----------------------------|
| Oil, Vacuum Pump | K90808-SP | 32oz |
| O-Ring, screen filters | K16208-SP | |
| O-Rings | K45030-SP | Internal |
| O-Rings | K45035-SP | External |
| Power Cord | K30199-SP | |
| Pump, vacuum | K16019-SP | 1.5 CFM |
| R134a Vehicle Adapter, | K05000-SP | Low |
| R134a Vehicle Adapter, | K05100-SP | High |
| R134a Vehicle Adapter, High | 0647-0287-07 | Same as K05100-SP |
| R134a Vehicle Adapter, Low | 0647-0287-08 | Same as K05000-SP |
| Relay, | K30323-SP | 6-Post |
| Shell, filter | K16203-01-SP | |
| Solenoid, | K60058-SP | (N.O. oil return) |
| Solenoid, | K60060-SP | Low Pres. (140psi) |
| Solenoid, | K60065-SP | High, Pres.(250psi) |
| Switch, High Pres. | K30255-SP | 435 psi |
| Switch, On/Off Rocker | K30058-SP | (Refrigerant Select) |
| T-fitting | K10653-SP | |
| Tank, | K16419-SP | R12 / 50lb. |
| Tank, | K16429-SP | R134a / 50lb. / Blue |
| Transducer, Pressure | K3020006-SP | |
| Tube | K40833-SP | Coiled Capillary 042" I.D. |
| Tube, 12" | K40852-SP | .085" I.D. |
| Tube, 18" | K40848-SP | .085" I.D. |
| Tube, 7" | K40807-SP | .085 I.D. |
| Valves stems | K60192-SP | |
| | | |
| | | |
| | | |

PARTS IN NUMERIC ORDER

| PART NUMBER | DESCRIPTION | COMMENTS |
|--------------------|--------------------------------|------------------------------------|
| K30324 | A.C. Terminal | Bus bar |
| K60082-SP | Ball Valve & Hose | R12, Yel 3" |
| K60083-SP | Ball Valve & Hose | R134a Yel.3" |
| K60107-SP | Ball Valve & hose | Red, 3" |
| K90301-SP | Beaker, cup | Plastic |
| K1101180-SP | Board, Recovery | Replaces K1101146 |
| K1101178-SP | Board, Main | Replaces K1101148 |
| K1101098-SP | Board, Tank Full | In tank |
| K10681-SP | Bulk Head fitting | Fitting, 1/8" to tube w/ o-ring |
| K35251-SP | Caster, | w/o/brake |
| K35252-SP | Caster, | w/brake |
| K60119-SP | Check valve | Replaces all |
| K16010-01-SP | Compressor, Super | 1/3-hp |
| K40002-SP | Condenser | |
| K45030-SP | Copper O-Ring | Internal |
| K1101031-SP | Cord, Tank Full | |
| K99096-SP | Cover, Protective | |
| K99703-SP | Decal, R12 | R12 Refrigerant Management |
| K99702-SP | Decal, R134a | R134a Refrigerant Management |
| K45351-SP | Depressor & Gasket Kit | For Hose ends R12, R134a (10) |
| K32511-SP | Fan, | 4" |
| K16200-SP | Filter, desicant | Pkg. Of 2 |
| K10681-SP | Fitting,1/8" to tube w/ o-ring | |
| K15022-SP | Gauge, High | R12/R134a |
| K15032-SP | Gauge, Low | R12/R134a |
| K30024-SP | Heater blanket, small | Filter |
| K24007-003 | Hose | Blue 24" |
| K24007-005-SP | Hose | Blue 8' R134a |
| K24007-300 | Hose | Blue, 3" R134a |
| K24107-003-SP | Hose | Red 24" R 134a |
| K24107-005-SP | Hose | Red 8' R134a |
| K24107-300 | Hose | Red, 3" R134a |
| K24207-309-SP | Hose | Yel. 24" |
| K24207-317-SP | Hose | Yel. 24" |
| K25007-143-SP | Hose | Blue 8' R12 |
| K25107-123-SP | Hose | Red 8' R12 |
| K60108-SP | Hose | Blue, 3" R12 |
| K30303-SP | Kit, pump accessories | Cap./Ther. O.L./ Relay/Cov. & clip |
| K90050-SP | Knob, Spinner control | |
| K90023-SP | Knobs, both | On tank |
| K1-99700-SP | Label | R12 Virgin |
| K1-99701-SP | Label | R134a Virgin |
| K99363-SP | Label, | Danger |
| K99704-SP | Label, | Hour-meter |
| K99705-SP | Label, | Hour-meter R134a |
| K99729-SP | Label, | Vapor / Liquid) |
| K35070-SP | Lock & Key | |
| K30006-SP | Membrane, | Recovery |
| K30276-SP | Meter Hour | |
| K90420-SP | Micron Filter | |
| K01550-SP | Oil Charge Bottle, | R12 |
| K01555-SP | Oil Charge Bottle, | R134a |
| K16608-SP | Oil Separator | |
| K90808-SP | Oil, Vacuum Pump | 32oz |

CHAPTER 4 PARTS

| | | |
|--------------|-----------------------------|----------------------------|
| K16208-SP | O-Ring, screen filters | |
| K45030-SP | O-Rings | Internal |
| K45035-SP | O-Rings | External |
| K30199-SP | Power Cord | |
| K16019-SP | Pump, vacuum | 1.5 CFM |
| K05000-SP | R134a Vehicle Adapter, | Low |
| K05100-SP | R134a Vehicle Adapter, | High |
| 0647-0287-07 | R134a Vehicle Adapter, High | Same as K05100-SP |
| 0647-0287-08 | R134a Vehicle Adapter, Low | Same as K05000-SP |
| K30323-SP | Relay, | 6-Post |
| K16203-01-SP | Shell, filter | |
| K60058-SP | Solenoid, | (N.O. oil return) |
| K60060-SP | Solenoid, | Low Pres. (140psi) |
| K60065-SP | Solenoid, | High, Pres.(250psi) |
| K30255-SP | Switch, High Pres. | 435 psi |
| K30058-SP | Switch, On/Off Rocker | (Refrigerant Select) |
| K10653-SP | T-fitting | |
| K16419-SP | Tank, | R12 / 50lb. |
| K16429-SP | Tank, | R134a / 50lb. / Blue |
| K3020006-SP | Transducer, Pressure | |
| K40833-SP | Tube | Coiled Capillary 042" I.D. |
| K40852-SP | Tube, 12" | .085" I.D. |
| K40848-SP | Tube, 18" | .085" I.D. |
| K40807-SP | Tube, 7" | .085 I.D. |
| K60192-SP | Valves stems | |
| | | |
| | | |