

TRUECUT 401

Spare Parts list

HOFMANN
USA

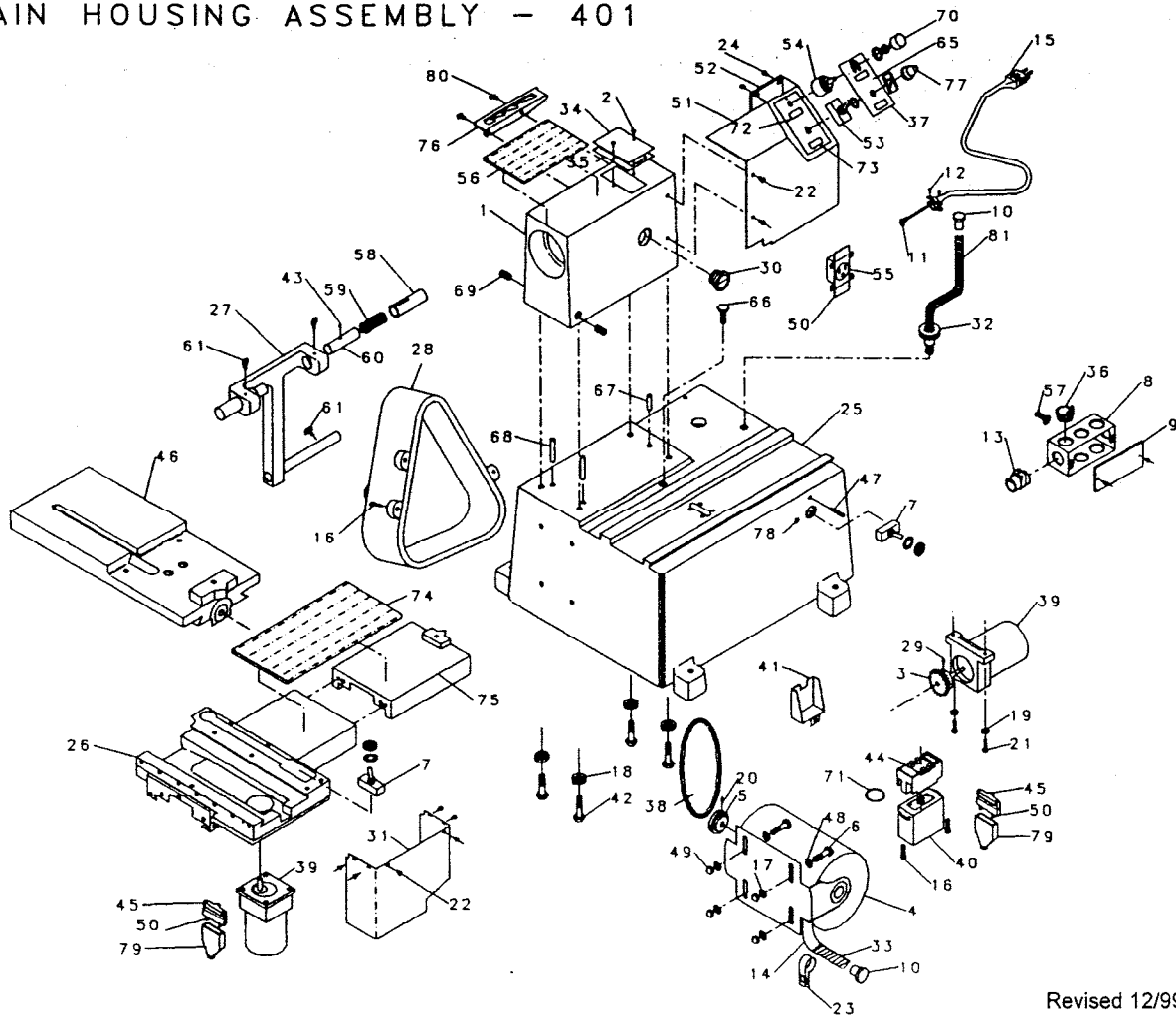


Canada
HOFMANN
Balancing Techniques Ltd.



Date 02/20/02

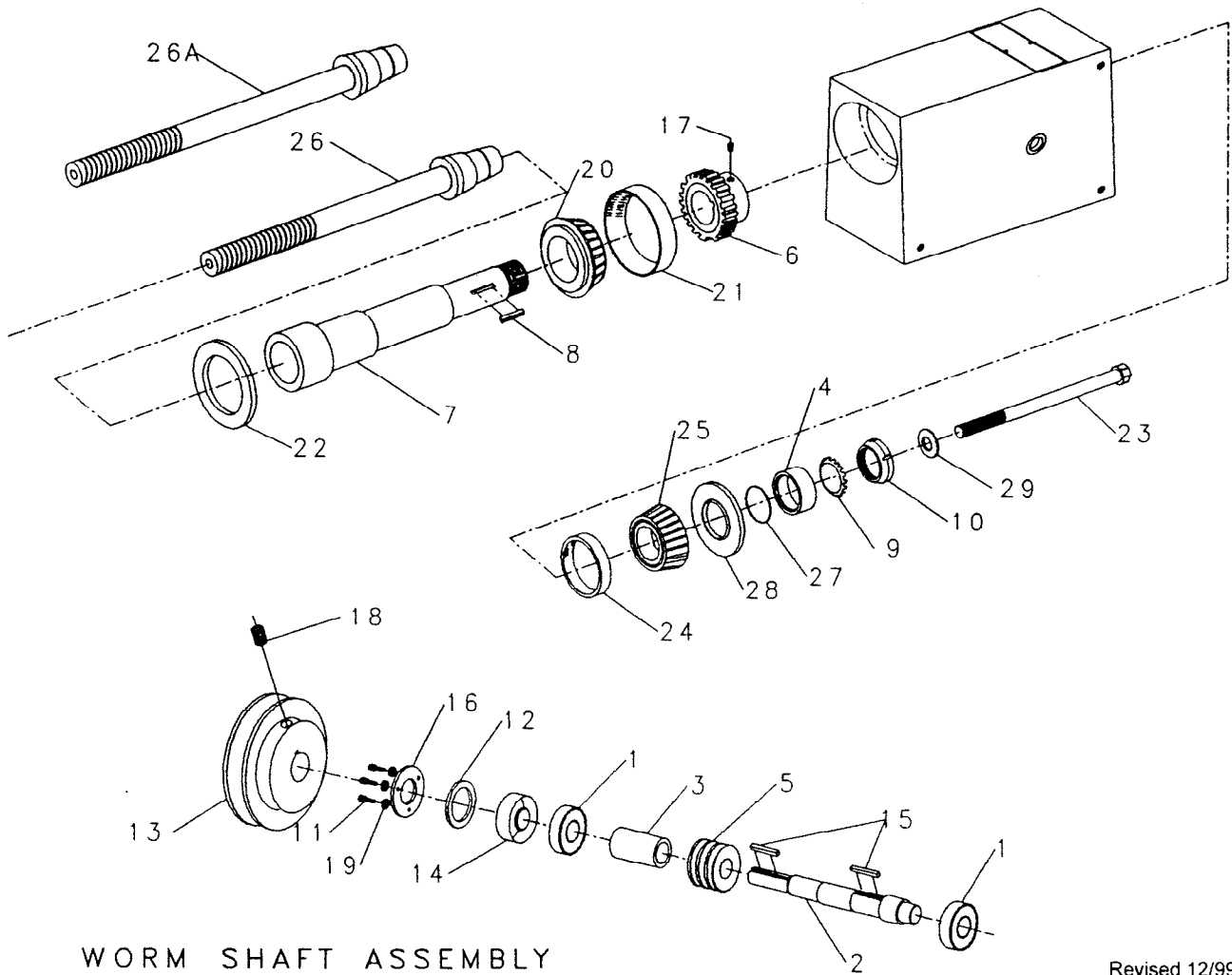
MAIN HOUSING ASSEMBLY - 401



Revised 12/99

NO.	PART NO.	DESCRIPTION	NO.	PART NO.	DESCRIPTION	NO.	PART NO.	DESCRIPTION
1	CL3-1	HEAD	28	CL679	BELT COVER	55	CL619-1	OUTLET
2	CL39	6/32 X 3/8 RHMS	29	CL524	1/4-28 X 1/2 SSS	56	CL621	TOOL PAD
3	CL84	SPROCKET	30	CL532-1	SITE GLASS	57	CL627	10/24 X 1/2 RHMS
4	CL90-1	MOTOR	31	CL536-2	GEAR MOTOR COVER	58	CL628	PLUNGER HOUSING
5	CL686	PULLEY	32	CL539	CONNECTOR	59	CL629	SPRING
6	CL94-1	5/16 - 18 x 1 1/4 CB	33	CL541	CONDUIT	60	CL630	PLUNGER (1103)
7	CL101-1	SWITCH	34	CL545	COVER	60A	1103	PLUNGER SET OF 2
8	CL103-1	ELECTRICAL BOX	35	CL546	GASKET	61	CL631-1	T-KNOB
9	CL104-1	ELECT. BOX COVER	36	CL548	CONNECTOR	62	CL632	CONNECTOR
10	CL106	ANTI SHORT	37	CL549	SWITCH GUARD	64	CL634	CONNECTOR
11	CL113	CONNECTOR	38	CL697	BELT [4L310]	65	CL635-1	LABEL
12	CL115	CONNECTOR	39	CL555	GEAR MOTOR	66	CL637	PLUG
13	CL116	CONNECTOR	40	CL556	SPEED CONTROL PAK	67	CL638	5/16 X 3/4 PIN
14	CL117	CONNECTOR	41	CL557	SWITCH GUARD	68	CL639	5/16 X 1 1/2 PIN
15	CL118	POWER CORD	42	CL560	3/8-16 X 1 3/4 HHCS	69	CL640	5/16-18 X 1" SSS
16	CL121-2	10/24 X 1 1/4 RHMS	43	CL568	10/32 X 5/16 SSS	70	CL617A	POTENTIOMETER CAP
17	CL180	5/16 LOCK WASHER	44	CL577	SPEED CTRL SOCKET	71	CL641	"O" RING
18	CL181	3/8 LOCK WASHER	45	CL578	CAPACITOR	72	CL663	DISC IND. LIGHT
19	CL185	1/4 LOCK WASHER	46	CL584	DISC CARRIAGE	73	CL664	DRUM IND. LIGHT
20	CL727	HALF DOG	47	CL588	SAFETY STOP	74	CL678	CARRIAGE TOOL PAD
21	CL223	1/4-20 X 3/4 SHCS	48	CL596	WASHER 3/8	75	CL680	CARRIAGE EXTENSION
22	CL225	10/24 X 1/4 BSHCS	49	CL597	5/16-18 NUT	76	CL677	SPEED LOCATOR
23	CL250-1	P-CLIP	50	CL603	CONNECTOR	77	CL670	TOGGLE BOOT
24	CL269	#6 X 3/8 STS	51	CL614-2	SWITCH PANEL BOX	78	CL662	INDICATOR LIGHT
25	CL500	BASE	52	CL615	COVER	79	CL578A	BOOT
26	CL501-1	DRUM CARRIAGE	53	CL616-4	SWITCH	80	CL656	1/4-20 X 1/2 BSHCS
27	CL503	STABILIZER	54	CL617	POTENTIOMETER	81	CL541-1	SEALTITE EF

SPINDLE SHAFT ASSEMBLY - 401

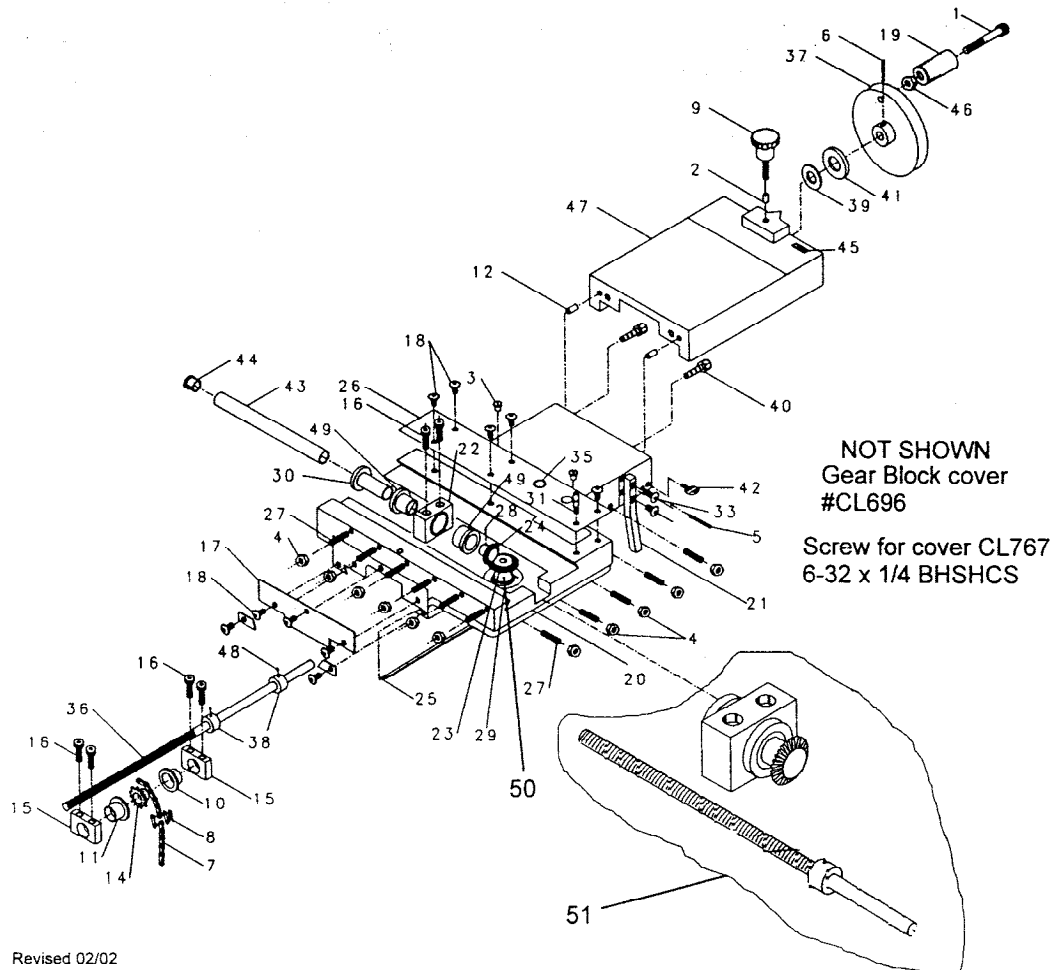


WORM SHAFT ASSEMBLY

Revised 12/99

NO.	PART NO.	DESCRIPTION	NO.	PART NO.	DESCRIPTION
1	CL20	BEARING	16	CL47	RETAINER PLATE
2	CL27-1	WORM SHAFT	17	CL193	5/16-18 X 5/16 SSS
3	CL28-1	SPACER	18	CL192	1/4-20 X 1/4 SSS
4	CL30-1	SEAL SPACER	19	CL201	#6 LOCK WASHER
5	CL31	WORM GEAR	20	CL261	BEARING CONE
6	CL32	BRONZE GEAR	21	CL262	BEARING CUP
7	CL33-2	SHAFT	22	CL263	SEAL
8	CL34	KEY	23	CL264-2	DRAW BOLT
9	CL35	LOCK WASHER	24	CL276-1	BEARING CUP
10	CL36	LOCK NUT	25	CL276-2	BEARING CONE
11	CL39	6/32 X 3/8 RHMS	26	CL538	1" ARBOR STANDARD 10.5" LONG
12	CL40	SHIM	26A	CL538-1	1" ARBOR OPTIONAL, 14.5" LONG
13	CL683	PULLEY	27	CL636	"O" RING
14	CL42	SEAL	28	CL38	SEAL
15	CL43	KEY	29	CL695	1/2" SAE FLAT WASHER

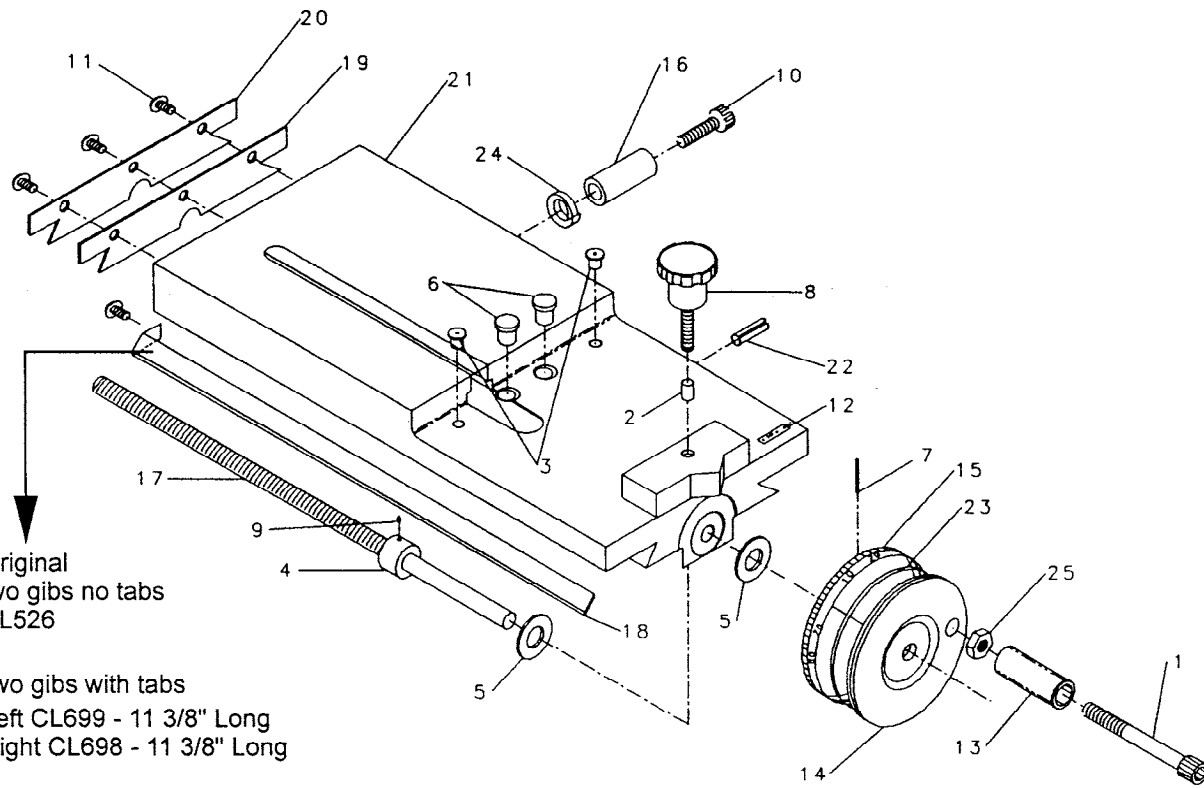
CARRIAGE ASSEMBLY



Revised 02/02

NO.	PART NO.	DESCRIPTION	NO.	PART NO.	DESCRIPTION
1	CL11-1	5/16-18 X 3" SHCS	26	CL544-2	SWITCH COVER PLATE
2	CL12	BRASS PLUG	27	CL562	1/4-20 x 1 SSS OVAL POINT
3	CL15-1	OILER	28	CL568	10/32 x 1/4 SSS
4	CL17	1/4 - 20 JAM NUT	29	CL571	BUSHING
5	CL21	SPRING PIN 1/8 x 7/8	30	CL585	GEAR SLEEVE
6	CL81	SPRING PIN 1/8 x 1	31	CL587	SAFETY STOP
7	CL85-2	CHAIN	33	CL626	1/4-20 x 5/8 BSHCS
8	CL87	CONNECTING LINK	35	CL662	INDICATOR LIGHT
9	CL141-1	LOCKING SCREW ASSEMBLY	36	CL672	LEAD SCREW
10	CL159-1	BUSHING	37	CL681	HANDWHEEL
11	CL159-2	BUSHING	38	CL684	COLLAR
12	CL204	1/4 x 3/4 DOWEL	39	CL685	THRUST WASHER
14	CL167-1	SPROCKET	40	CL693	5/16-18 x 1 1/4
15	CL216	BLOCK	41	CL694	SPACER
16	CL223	1/4 - 20 x 1 1/4 SHCS	42	CL643	THUMB SCREW
17	CL224-1	WIPER	43	CL658	LEAD SCREW TUBE
18	CL225	10/24 x 1/4 BSHCS	44	CL659	LEAD SCREW TUBE PLUG
19	CL265-2	PLASTIC SWIVEL	45	CL245-2	DIVISION LABEL
20	CL501-1	CARRIAGE	46	CL98	5/16 JAM NUT
21	CL514-2	SHUT OFF ARM	47	CL680	CARRIAGE EXTENSION
22	CL516	BLOCK	48	CL192	1/4-20 x 1/4 SSS
23	CL517	FEED MOTOR GEAR	49	CL159-1A	BUSHING
24	CL519-1	GEAR	50	CL524	Set Screw 1/4-28 x 1/4
25	CL525-1	GIB	51	CL516C	Gear Block assembly Gear block & Lead Screw

CROSS SLIDE ASSEMBLY - 401



Original
two gibs no tabs
CL526

Two gibs with tabs
Left CL699 - 11 3/8" Long
Right CL698 - 11 3/8" Long

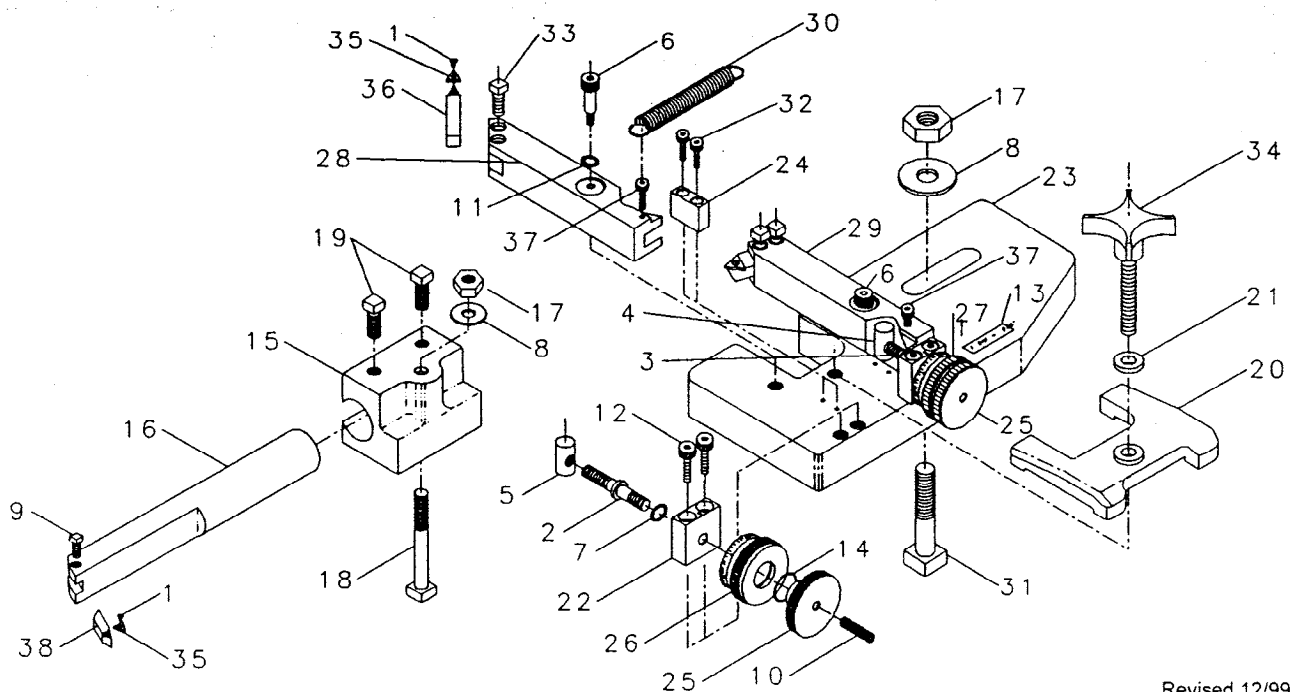
One gib with tab
Left only CL699-1 - 10 3/8" Long

Screw used to attach gib
CL741 10 - 24 x 3/8" BSHCS

Revised 5/01

NO.	PART NO.	DESCRIPTION	NO.	PART NO.	DESCRIPTION
1	CL11-1	HANDLE 5/16-18X3	13	CL265-2	PLASTIC HANDLE
2	CL12	BRASS PLUG	14	CL509	HANDWHEEL
3	CL15-1	OILER	15	CL510	INDICATOR DIAL
4	CL59	COLLAR	16	CL513	SWITCH SHUT OFF ARM
5	CL67-1	THRUST WASHER	17	CL516C	LEAD SCREW (CL522-1)
6	CL73	RUBBER PLUG	18	CL699-1	GIB
7	CL81	1/8X1 SPRING PIN	19	CL661	WIPER
8	CL141-1	LOCKING SCREW KNOB	20	CL660	RETAINING PLATE
9	CL192	1/4-20X1/4 SSS	21	CL584	CARRIAGE
10	CL223	1/4-20X1 1/4 SHCS	22	CL588	SWITCH SAFETY STOP
11	CL225	10/24X1/4 BSHCS	23	CL602	"0" RING
12	CL245-1	DIVISION LABEL (.002)	24	CL185	1/4" LOCK WASHER
			25	CL98	5/16 JAM NUT
Item #17 Lead Screw - Only available as a kit which consist of the gear block & lead screw					

TOOL PLATE ASSEMBLY - 401

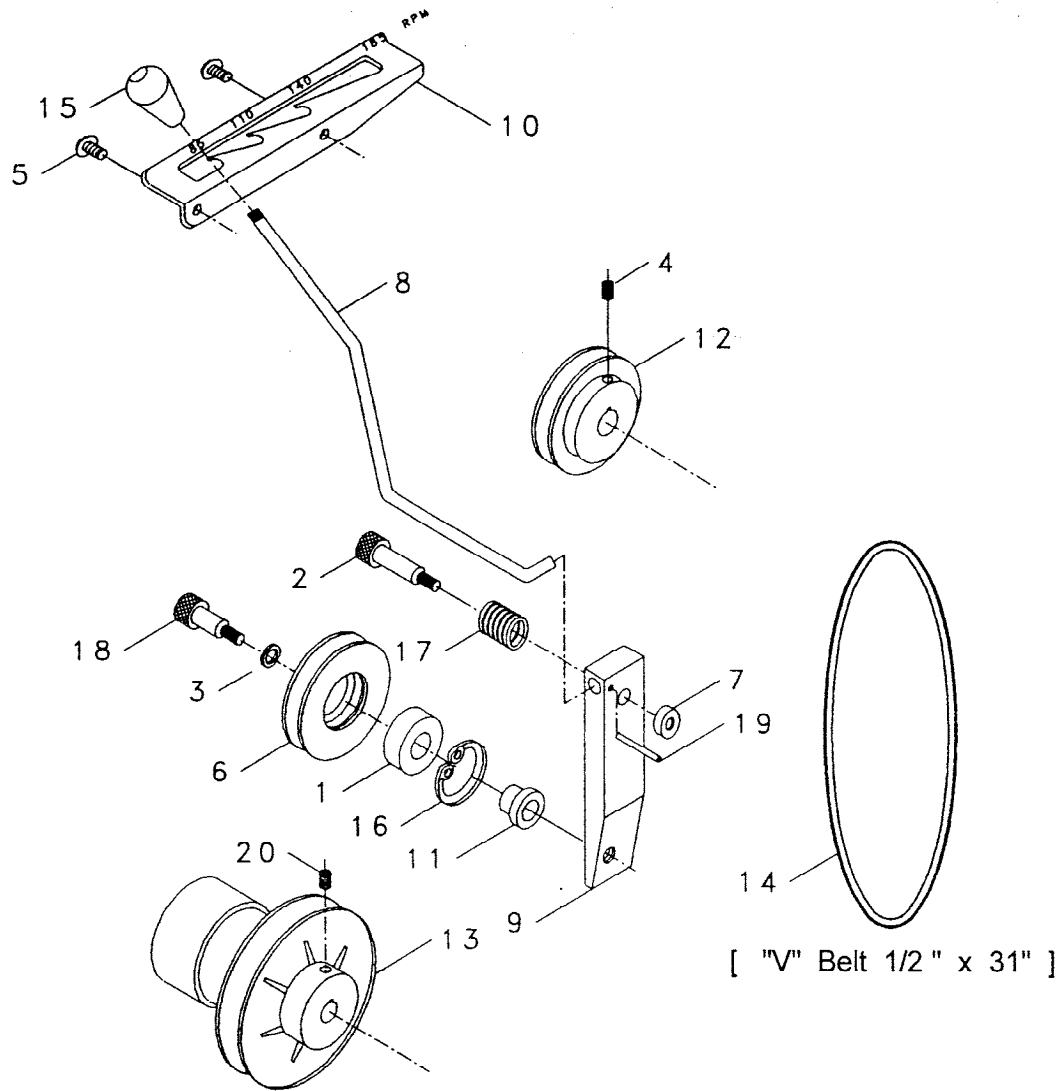


Revised 12/99

NO.	PART NO.	DESCRIPTION	NO.	PART NO.	DESCRIPTION
1	CL39	TOOLBIT SCREW 6/32 X 3/8	20	CL575	TOOL HOLDER CLAMP
2	CL56-1	TOOL POSITIONING SCREW (L)	21	CL596	WASHER (3/8 SAE)
3	CL57-1	TOOL POSITIONING SCREW (R)	22	CL604	SUPPORT BLOCK
4	CL70	TOOL ADJUSTING NUT (R)	23	CL605	TOOL PLATE
5	CL71	TOOL ADJUSTING NUT (L)	24	CL606	ALIGNING BLOCK
6	CL75-1	STRIPPER BOLT 5/16-1	25	CL607	TOOL POSITIONING KNOB
7	CL142	SPRING WASHER	26	CL608	INDICATOR DIAL (L)
8	CL156	WASHER	27	CL609	INDICATOR DIAL (R)
9	CL170	SQ. HD. SS 5/16-18 X 3/4	28	CL610	TOOL HOLDER - LEFT
10	CL191	5/16-24 X 3/4 SSS	29	CL611	TOOL HOLDER - RIGHT
11	CL211	SPRING WASHER	30	CL612	SPRING
12	CL223	1/4-20 X 1 1/4 SHCS	31	CL776	"T" BOLT - 2 1/2"
13	CL245-1	DIVISION LABEL (.002)	32	CL623	8/32 X 3/4" SHCS
14	CL254	"O" RING	33	CL624	SQ. HD. SS 5/16-18 X 1/2
15	CL502	BORING BAR HOLDER	34	CL625	LOCKING SCREW & KNOB
16	CL523	BORING BAR	35	W139	CARBIDE INSERT TOOL BIT (PKG. OF 10)
17	CL527	HEX NUT 1/2-13	36	W140	TOOL BIT HOLDER (DISC)
18	CL528	"T" BOLT - 4 1/2"	37	CL77	10/32 X 1/2 SHCS
19	CL566	SQ. HD. SS 1/2-13 X 1	38	W140-1	TOOL BIT HOLDER (DRUM)

CL605A Disc Tool Plate assembly
 CL502A Drum Boring bar assembly

SPEED CHANGER ASSEMBLY - 401



Revised 12/99

NO.	PART NO.	DESCRIPTION	NO.	PART NO.	DESCRIPTION
1	CL20	BEARING BALL	11	CL682	BUSHING
2	CL174-1	SHOULDER BOLT	12	CL683	PINION PULLEY
3	CL182	SPRING WASHER	13	CL686	DRIVE PULLEY
4	CL192	1/4-20 X 1/4 SSS	14	CL697	"V" 1/2"x31" BELT
5	CL656	1/4-20 X 1/2	15	CL688	PLASTIC KNOB
6	CL673	IDLER PULLEY	16	CL689	SNAP RING
7	CL674	SPACER	17	CL690	SPRING
8	CL675	SPEED CHANGE LEVER	18	CL691	SHOULDER BOLT
9	CL676	IDLER PULLEY BRACKET	19	CL692	SPRING PIN 1/8 X 1/2
10	CL677	BRACKET	20	CL727	HALF DOC