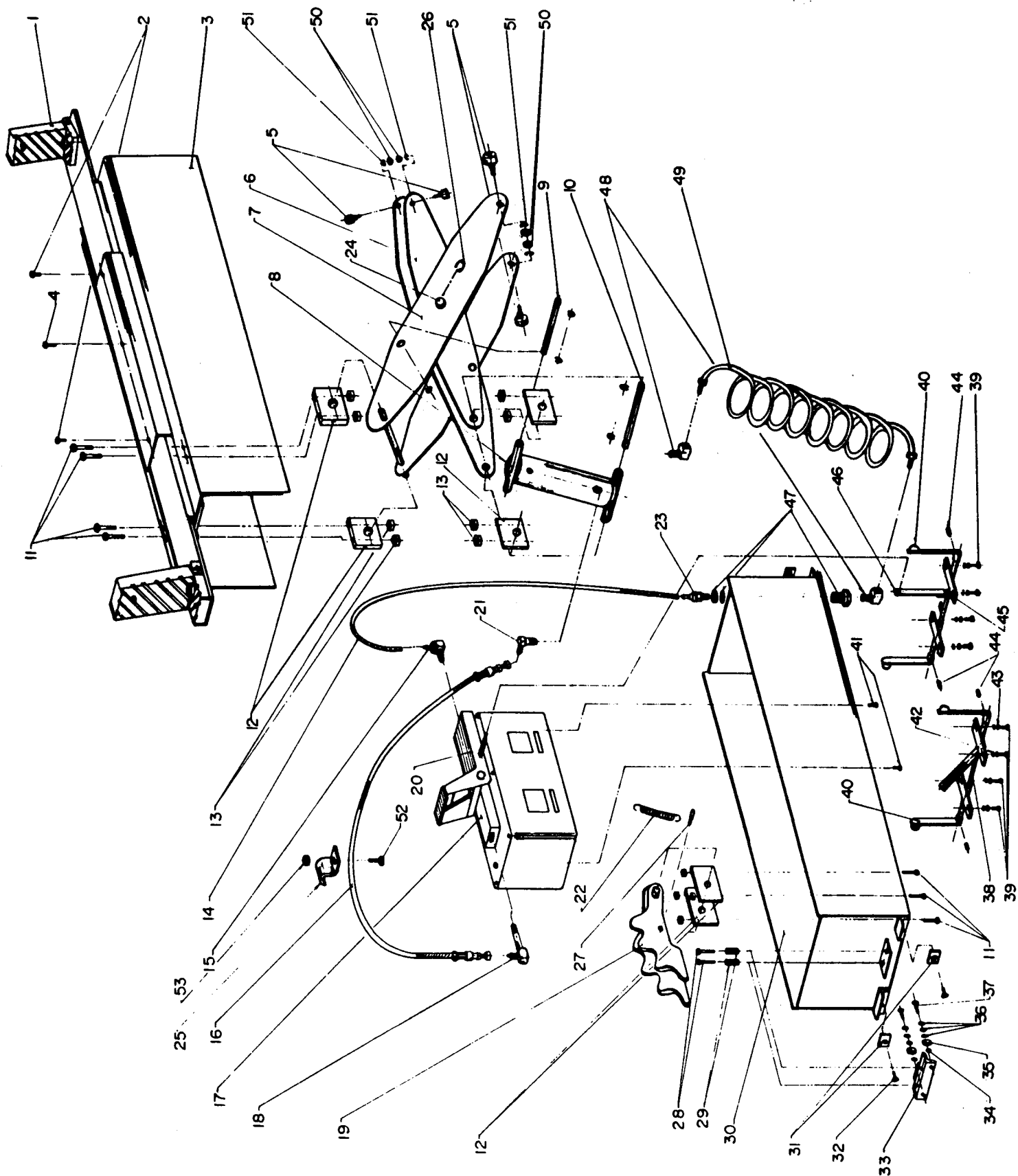


## MODEL 48 JACK BEAM



JACK - AJS6000 6000LBS CAPACITY

DATE: OCT 15, 1990

FMC		DESCRIPTION	QTY
PART #			
1	44079	JACK PAD ASSEMBLY	2
2	1100804	HEX. HD. BOLT 1/4" - 20 UNC-1/2" LG	2
3	44080	JACK BOX TOP ASSEMBLY	1
4	1111599	HEX. HD. BOLT 1/4" - 20 UNC-5/8" LG	1
5	44045	CAM FOLLOWER BEARING CF-1-1/2" DIA.	4
6	44081	SCISSOR - INNER ASSEMBLY	1
7	44082	SCISSOR - OUTER ASSEMBLY	1
8	44153	HYDRAULIC CYLINDER	1
9	44154	UPPER CYLINDER SHAFT	1
10	44155	LOWER CYLINDER SHAFT	1
11	1111609	HEX. HD. BOLT 5/16" - 18 UNC-2-3/4" LG.	12
12	44048	PILLOW BLOCK	6
13	1120239	HEX. HD. LOCK NUT 5/16" - 18 UNC	12
14	44050	PUMP AIR HOSE 9" LG.	1
15	44051	HOSE TO PUMP ELBOW FITTING	1
16	44052	HYDRAULIC HOSE	1
17	44053	OTC PUMP	1
18	44054	1/4" NPT. MALE TO 1/4" JIC MALE EXT 90 DEG.	1
19	44055	SAFETY	1
20	44092	SHOULDER SCREW 3/8" DIA X 1-1/4" LG	1
21	44056	3/8" NPT MALE TO 1/4" JIC 90 DEG ELBOW	1
22	44057	TENSION SPRING	1
23	44058	1/4" NPT MALE TO 5/16" I.D. AIR	1
24	44059	CENTRE SHAFT	1
25	44077	HOSE MOUNT CLIP	1
26	44078	RETAINING RING	8
27	44060	SAFETY SHOULDER SCREW	1
28	1111607	HEX. HD. BOLT 5/16" - 18 UNC - 2-1/4" LG.	4
29	44062	WHEEL MOUNT SPRING	4
30	44083	JACK BOX BOTTOM ASSEMBLY	1
31	44063	PLASTIC BRACKET	4
32	44064	FLAT HD. SCREW 1/4" - 20 UNC - 1/4" LG.	4
33	44084	WHEEL BRACKET ASSEMBLY	2
34	1100254	FLAT WASHER 1/4" I.D. X 3/4" O.D.	4
35	44065	WHEEL BEARING	4
36	1100256	FLAT WASHER 3/8" I.D. X 1" O.D.	12
37	44033	SHOULDER SCREW 3/8" DIA. X 3/4" LG.	4
38	44085	SAFETY HANDLE SHAFT ASSEMBLY	1
39	1111599	HEX. HD. BOLT 1/4" - 20 UNC - 5/8" LG.	8
40	44067	HANDLE	4
41	1185375	HEX. HD. SCREW SELF TAPING 1/4" - 20 UNC - 3/4" LG	2
42	1100241	LOCK WASHER 1/4" I.D.	8
43	1100254	FLAT WASHER 1/4" I.D.	8
44	44046	ROLL PIN 1/8" DIA. X 1" LG.	4
45	44071	HANDLE MOUNT BRACKET	4
46	44086	PUMP HANDLE SHAFT ASSEMBLY	1
47	44072	BULKHEAD FITTING	1
48	44073	1/4" NPT MALE TO 1/4" NPT FEMALE, 90 DEG ELBOW	2
49	44074	SELF-STORING AIR HOSE	1
50	1109533	HEX. NUT 5/8" - 18 UNF	4
51	1100247	LOCK WASHER 5/8" I.D.	4
52	1100805	HEX. HD. BOLT 1/4" - 20 UNC X 3/4" LG.	1
53	1121507	HEX. NUT 1/4" - 20 UNC	1

"FOR REFERENCE ONLY"

For Current Information see [www.equiserv.com/techsupport](http://www.equiserv.com/techsupport)