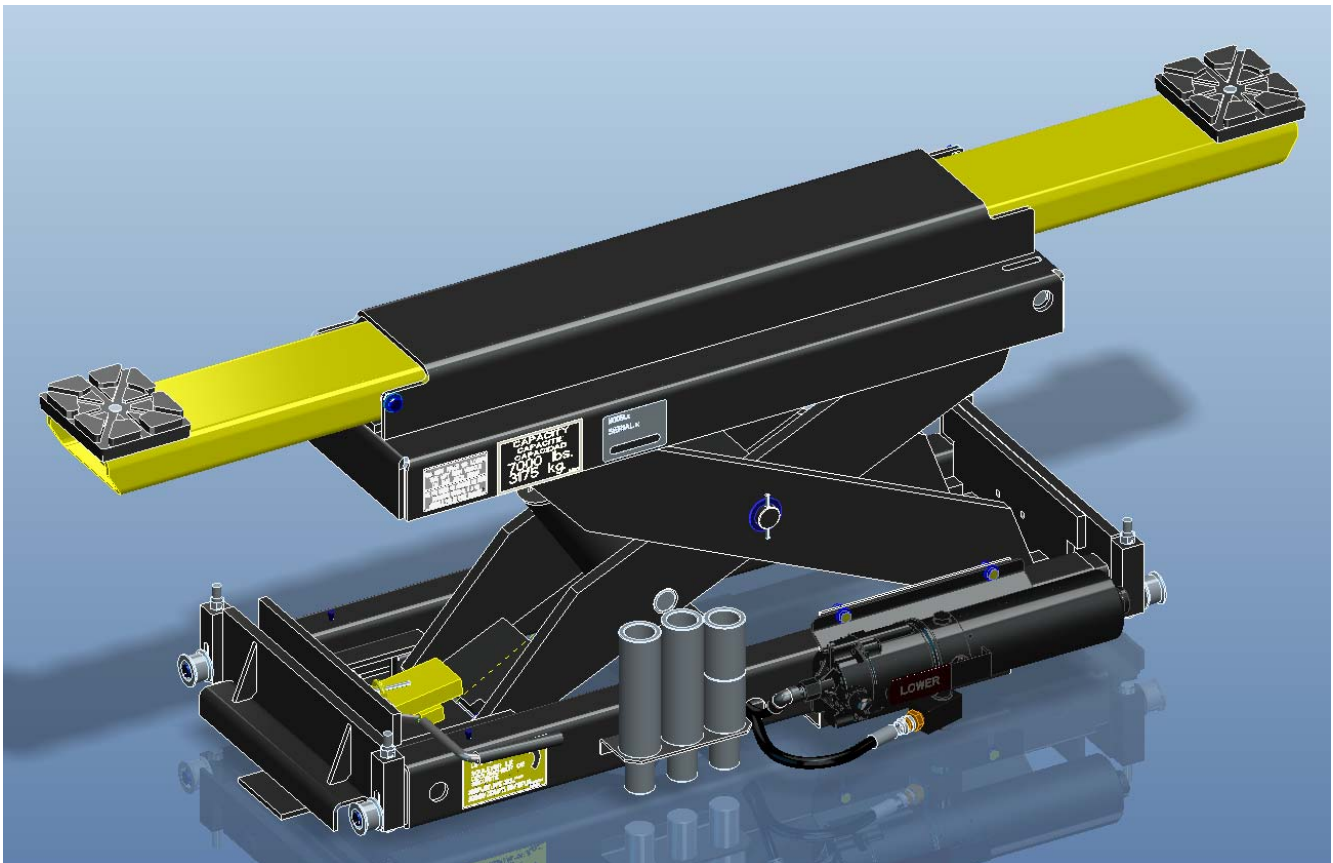


Snap-on Equipment

**AIR-HYDRAULIC ROLLING JACKBEAM
CAPACITY: 7000 LBS.
MODELS: EELR510A**



INSTALLATION AND OPERATION MANUAL

**READ ALL INSTRUCTIONS THOROUGHLY BEFORE INSTALLING,
OPERATING, SERVICING, OR MAINTAINING THE LIFT.**



Snap-on Equipment

6500 Millcreek Drive, Mississauga, Ontario, L5N 2W6
Customer Service 1-800-268-7959

NOV 2012 REV. - 6-4102

OWNER / EMPLOYER OBLIGATIONS

1. The Owner/Employer shall ensure that lift operators are qualified and that they are trained in the safe use and operation of the lift using the manufacturer's operating instructions; ALI/SM 93-1, **ALI Lifting it Right** safety manual; ALI/ST-90 **ALI Safety Tips** card; ANSI/ALI ALOIM-2008, **American National Standard for Automotive Lifts - Safety Requirements for Operation, Inspection and Maintenance**; ALI/WL Series, **ALI Uniform Warning Label Decals/Placards**; and in the case of frame engaging lifts, ALI/LP-GUIDE, **Vehicle Lifting Points/Quick Reference Guide for Frame Engaging Lifts**.
2. The Owner/Employer shall establish procedures to periodically inspect the lift in accordance with the lift manufacturer's instructions or ANSI/ALI ALOIM-2008, **American National Standard for Automotive Lifts - Safety Requirements for Operation, Inspection and Maintenance**; and the Employer shall ensure that the lift inspectors are qualified and that they are adequately trained in the inspection of the lift.
3. The Owner/Employer shall establish procedures to periodically maintain the lift in accordance with the lift manufacturer's instructions or ANSI/ALI ALOIM-2008, **American National Standard for Automotive Lifts - Safety Requirements for Operation, Inspection and Maintenance**; and the Employer shall ensure that the lift maintenance personnel are qualified and that they are adequately trained in the maintenance of the lift.
4. The Owner/Employer shall maintain the periodic inspection and maintenance records recommended by the lift manufacturer's instructions or ANSI/ALI ALOIM-2008, **American National Standard for Automotive Lifts - Safety Requirements for Operation, Inspection and Maintenance**.
5. The Owner/Employer shall display the lift manufacturer's operating instructions; ALI/SM 93-1, **ALI Lifting it Right** safety manual; ALI/ST-90 **ALI Safety Tips** card; ANSI/ALI ALOIM-2008, **American National Standard for Automotive Lifts - Safety Requirements for Operation, Inspection and Maintenance**; ALI/WL Series, **ALI Uniform Warning Label Decals/Placards**; and in the case of frame engaging lifts, ALI/LP-GUIDE, **Vehicle Lifting Points/Quick Reference Guide for Frame Engaging Lifts** in a conspicuous location in the lift area convenient to the operator.
6. The Owner/Operator shall provide necessary lockout/tagout means for energy sources per ANSI Z244.1-1982 (R1993), **Safety Requirements for the Lockout/Tagout of Energy Sources**, before beginning any lift repairs and maintenance.
7. The Owner/Employer shall not modify the lift in any manner without the prior written consent of the manufacturer.

JACKBEAM INSTALLATION AND OPERATION MANUAL

The Jackbeam should only be used with lifts installed on level concrete floors conforming to the installation instructions for the lift. Consult lift installation instructions for concrete thickness and strength requirements. Ensure clearance around and above lift conforms to installation instructions for the lift.



ATTENTION! This lift is intended for indoor installation only. It is prohibited to install this product outdoors. Operating environment temperature range should be 41 – 104 °F (5 – 40 °C). Failure to adhere will result in decertification, loss of warranty, and possible damage to the equipment.

Installation of lifts shall be performed in accordance with ANSO/ALI ALIS, Safety Requirements for Installation and Service of Automotive Lifts

For additional safety instructions regarding lifting, lift types, warning labels, preparing to lift, vehicle spotting, vehicle lifting, maintaining load stability, emergency procedures, vehicle lowering, lift limitations, lift maintenance, good shop practices, installation, operator training and owner/employer responsibilities, please refer to “Lifting It Right” (ALI/SM) and “Safety Tips” (ALI/ST).

For additional instruction on general requirements for lift operation, please refer to “Automotive Lift-Safety Requirements For Operation, Inspection and Maintenance” (ANSI/ALI ALOIM).

+ 070126-Quadra-WLSIA01

SAFETY INSTRUCTIONS

If attachments, accessories or configuration modifying components that are located in the load path, affect operation of the lift, affect the lift electrical listing or affect intended vehicle accommodation are used on this lift and, if they are not certified for use on this lift, then the certification of this lift shall become null and void. Contact the participant for information pertaining to certified attachments, accessories or configuration modifying components.

www.autolift.org

©2007 by ALI, Inc.

ALI / WLSIA01

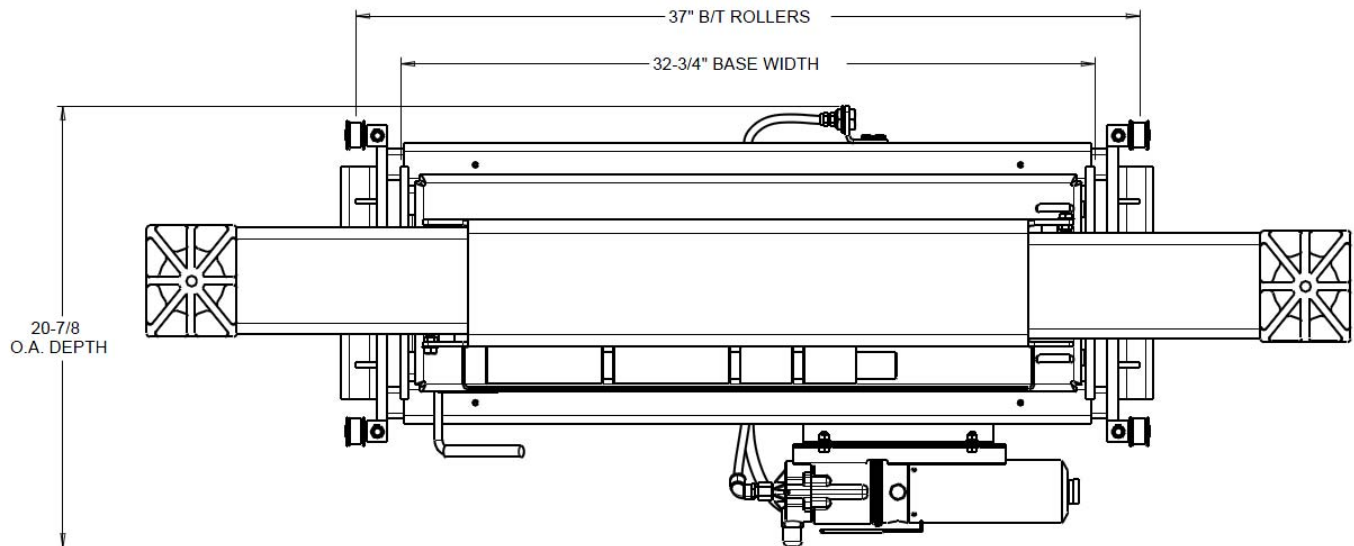
NOTE: Air supply must be lubricated and include water separator. Failure to do so will damage the air /hydraulic motor and void the manufacturer’s warranty.

Table of Contents

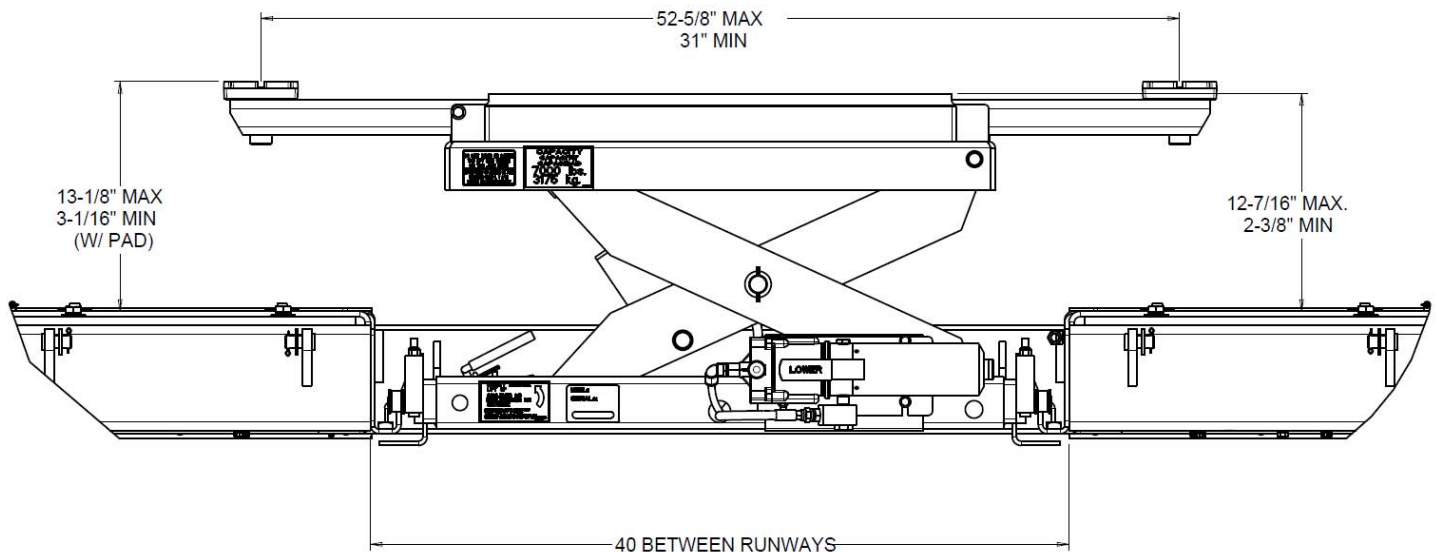
1.0	Specifications	5
2.0	Shipping Contents.....	6
3.0	Safety Instructions.....	6
4.0	Position the Jackbeam on Lift	7
5.0	Raising the Jackbeam.....	8
6.0	Lowering the Jackbeam	8
7.0	Storage Position of Jackbeam	9
8.0	Positioning of Vehicle on Jackbeam.....	9
9.0	Recommended Maintenance	11
10.0	Trouble Shooting.....	12
11.0	Parts List: Exploded View	13
12.0	Jackbeam Parts List.....	14
13.0	Air / Hydraulic Pump Exploded View	15
14.0	Air / Hydraulic Pump Parts List	15
15.0	Maintenance Schedule.....	16

1.0 Specifications

Capacity	7,000 lbs.	3175 kg
Minimum Arm Reach	31"	787 mm
Maximum Arm Reach	52-5/8"	1337 mm
Minimum Lowered Height above Deck Surface (no stack pad)	2-3/8"	60 mm
Maximum Raised Height above Deck Surface (w/ single pad)	13-1/8"	333 mm
Power Requirements @ 20 in3/min (flow rate)	90-120 psi	6-8 bar
Maximum Operating Pressure @ Rated Capacity:	5210 psi	359 bar
Shipping Weight	329 Lbs.	149 Kg.



Top View



Front view

Jackbeam plan and elevation views

2.0 Shipping Contents

The Jackbeam is fully assembled and packaged to protect it during shipping. Included are the following components:

- (1) Jackbeam Assembly, including:
 - Jacking Beam Body
 - Lifting Arms
 - Roller Adapters
 - Air/Hydraulic Pump
- (2) Rubber Stack Pads
- (2) 5-1/2" Stack Adapters
- (2) 3-1/2" Stack Adapters
- (1) Jackbeam Keeper Bracket Kit
- (1) Installation and Operation Manual

3.0 Safety Instructions

CAUTION

- Never allow unauthorized or untrained persons to operate the jackbeam.
- Thoroughly train all employees in the use and care of the jackbeam.
- Allow 12" minimum clearance between vehicle and nearest overhead obstruction before raising vehicle above runways. This number is dependant on the number and size of stack adapters used. For each stack adapter, minus the length of each from 12". Failure to comply can result in vehicle damage and/or personal injury.

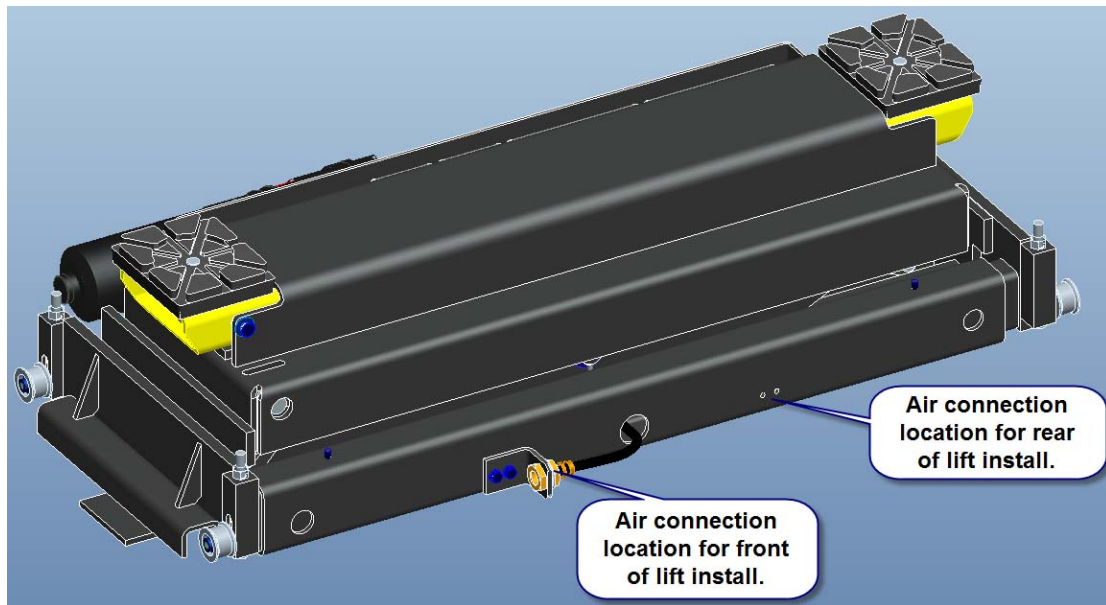
WARNING

- To avoid personal injury and/or property damage, the jackbeam must only be operated by trained personnel.
- Never overload the jackbeam. Capacity of jackbeam is stated on nameplate, **DO NOT** exceed.
- Observe and avoid any pinch point areas of the jackbeam.
- Never operate a Jackbeam that is not in proper working order or in a manner not recommended by the vehicle or jacking beam manufacturer.
- Always ensure that the mechanical safety is engaged whenever a vehicle is supported by the Jackbeam.
- Do not use different length stack adapter on each arm. Stack adapter must be used in pairs.
- Load evenly; do not place weight on one side of the jack.

4.0 Position the Jackbeam on Lift

Note: The Jackbeam must be positioned on the lift correctly prior to usage.

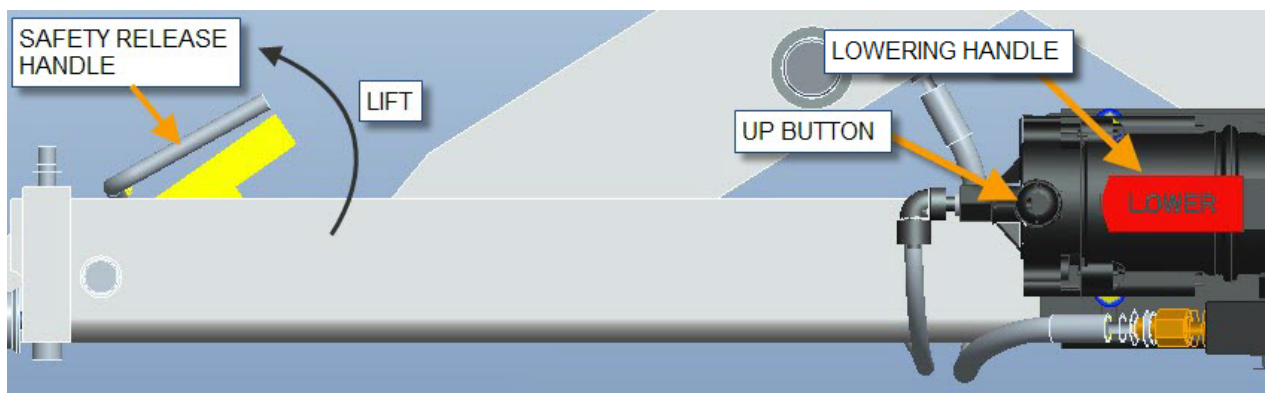
1. Place jackbeams on runway tracks at front and rear of lift with the pump of each facing outwards.
2. Ensure wheels are on the tracks and roll freely.
3. Attach recoil hose to the bulkhead fitting at the rear of each jackbeam, and then other ends to the 'T' fitting on lift.
 - a. The Jackbeam is shipped pre-assembled to install at the front of the lift. The air connection bracket is on the rear left side of the Jackbeam.
 - b. To install the Jackbeam at the rear of the lift, the air connection bracket must be removed and reinstalled on the rear right side. Disconnect the 3/8" polytube, reroute, cut to length and reinstall.



4. Prior to placing vehicle on lift, raise and lower the Jackbeam multiple times and check for air and hydraulic leaks. See sections "[5.0 Raising the Jackbeam](#)" and "[6.0 Lowering the Jackbeam](#)" for operation instructions.

5.0 Raising the Jackbeam

1. Prior to placing vehicle on lift, check the operation of the jackbeam.
2. Press the up button on the air/hydraulic pump and hold until jacking beam is at full working height.
3. As lift travels up:
 - Ensure the mechanical safety falls into place at both safety positions.
 - Check system for air and hydraulic leaks.
4. To place a vehicle on the lift, see section [“7.0 Positioning of Vehicle on Jackbeam”](#) for instructions.



6.0 Lowering the Jackbeam

1. To lower the jackbeam, first raise the jackbeam up off the mechanical safety lock.
2. Disengage the safety lock by lifting and holding the Safety Release Handle.
3. Press the lowering handle on the pump to release pressure allowing the jacking beam to lower to its full down position.
4. Once jackbeam is completely collapsed, release the safety and lowering handles.
5. If lowering from the 2nd lock position to the 1st lock position, repeat steps 1 to 4. You may release the safety handle once the 2nd safety has passed.
6. Lower the Jackbeam onto each safety (Note: there are two safety positions to allow for multiple working heights).

NOTE: The Safety Release handle is gravity returned to “reset” the safety.

After reading these instructions, get familiar with the controls by running the jackbeam through a few cycles before loading vehicle on lift.

7.0 Storage Position of Jackbeam

In order to allow for adequate vehicle drive-on clearance,

1. When not in use, store Jackbeams towards the center of the lift.
2. Ensure lift is fully collapsed.
3. Remove lifting pads if additional clearance is required

8.0 Positioning of Vehicle on Jackbeam

The WHEELFREE® jack system has a low profile design, however; may not be suited for all vehicles.

Cautionary steps to consider before driving a vehicle over a rolling jack onto or off of a lift.

- Inspect the underside of the vehicle for low hanging obstructions.
- Inspect the vehicle for points of interference
- Position rear rolling jack beam forward from the rear of the lift.
- Jack pads and extensions must be removed from the jack.
- Make certain the jack is in its fully loader position
- Floor areas must be clear from objects that may be in the path when lowering the lift and/or jack beam
- Air supply must be maintained

WARNING

Lowered standard and/or custom vehicle heights may affect drive over and use of jack or loading of vehicle on lift.

Failure to follow the cautionary steps as outlined above may result in property damages.

1. The vehicle must be positioned correctly on the lift prior to raising the vehicle with the Jackbeam. With the vehicle's center of gravity equally spaced between the runways, the Jackbeam can be used to lift the vehicle.
2. Move the Jackbeam to the desired pickup area.
3. Select lifting points that are the same distance from the centerline of the vehicle, i.e. position the Jackbeam pads so that they make contact at the same point on each side of the vehicle.
4. With the Jackbeam positioned, insert the stack pads if not already installed. If additional height is required, use either the short or long stack adapters.

NOTE: Use the same length of stack adapter on each lifting arm.

8. **NOTE:** Lift vehicle at vehicle manufacturer's recommended pickup points only. Please refer to **ALI/LP-GUIDE, Vehicle Lifting Points/Quick Reference Guide for Frame Engaging Lifts.**

5. Extend the arms to the desired pickup point. If required, raise the jackbeam so the arms can be extended above the runways.



ATTENTION! Lifting arms should be extended equally as to avoid any off-load of the vehicle that may cause vehicle damage and/or personal injury.

6. As the Jackbeam raises the vehicle, the weight of the Jackbeam is transferred from the rollers to the lift. The roller assemblies on the Jackbeam are spring loaded and are meant to carry the weight of the jack only. When load is applied, the structure cannot be moved.
7. To lower the vehicle, refer back to section "[6.0 Lowering the Jack Beam](#)".



ATTENTION! Do not raise lift while vehicle is supported by the Jackbeams. Failure to adhere may cause vehicle damage and/or personal injury.

9.0 Recommended Maintenance

Daily:

1. Inspect that the jackbeam is in proper working condition.
2. Make certain that the automatic engaging safety drops into place when the Jackbeam is raised and that it will release when held in the up position during lowering.
3. Inspect air/hydraulic system for leaks.
4. Inspect for loose bolts, broken/damaged components. Replace as required.
5. Keep the entire Jackbeam as clean as possible at all times.
6. Ensure that the lifting arm stops are working correctly. Fully extend each arm until the stop engages.
7. Inspect condition of rubber lifting pads. Replace if required.

Monthly:

1. Keep the air source clean and make certain that an air filter is used to keep dirt out of the air motor. To maintain a clean shop air supply, an FRL (oil/lube/filter and regulator) should always be in good working order in conjunction with the use of an oiler/separator.


NOTE: It is the user(s) responsibility to supply an air filter/lubricator to ensure a clean air source is provided to the air/hydraulic pump. Failure to provide clean air may void manufacturers' warranty. Please contact customer service regarding Optional Kit # 0100.

2. Check functionality of the rollers, keep clean.
3. Grease upper and lower slider block areas. Use multipurpose, extreme pressure grease such as Megaplex XD%, NGLI grade 2 or equivalent.

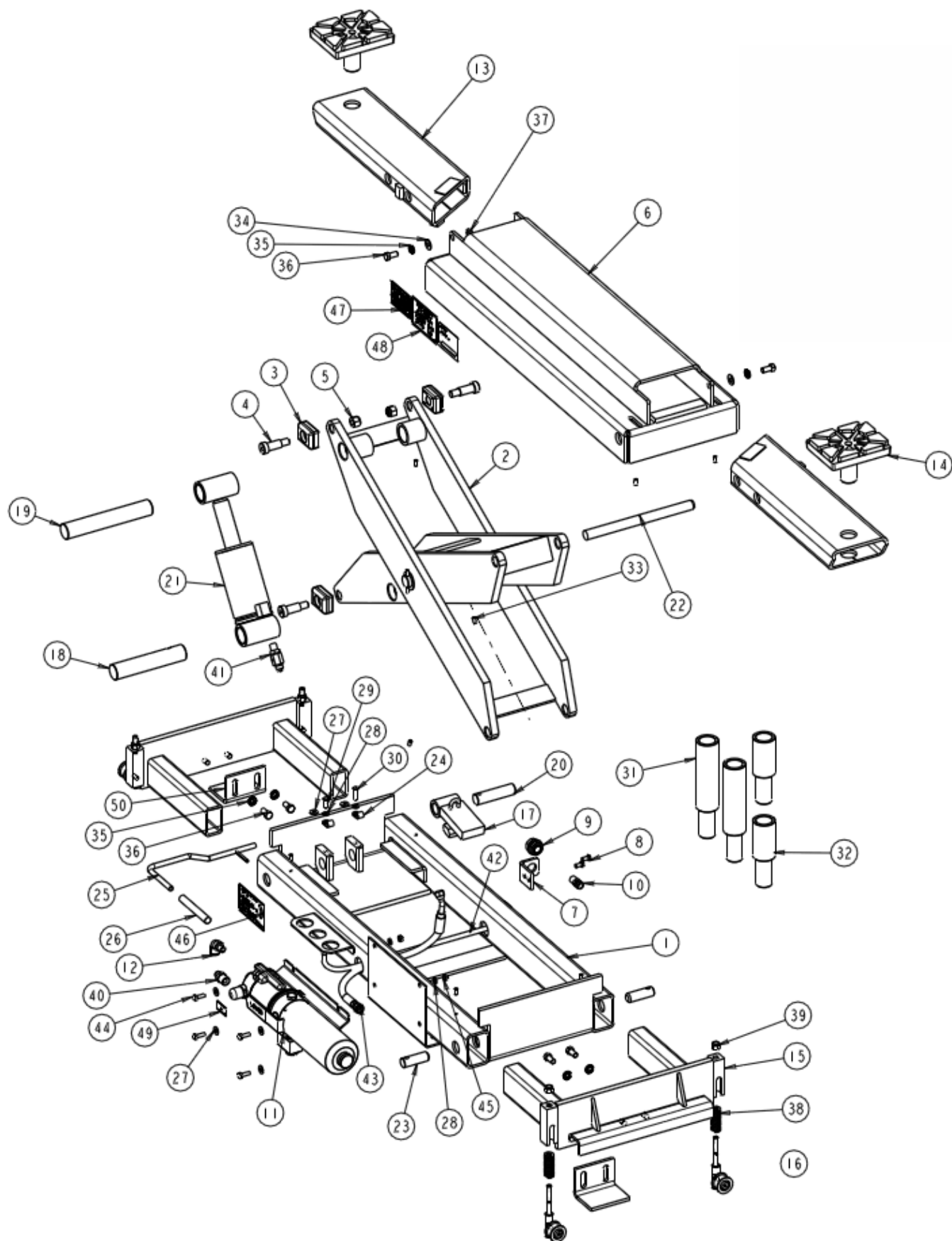


ATTENTION! Discontinue the use of the Jackbeam immediately if any component(s) are damaged, defective, worn or broken. Please contact Customer Service 1-800-225-5786.

10.0 Trouble Shooting

Trouble	Cause	Remedy
Pump runs but lift will not rise after contacting load.	<p>Lift loaded beyond capacity.</p> <p>Fluid leak at pump, hose or cylinder.</p> <p>Wrong pump installed on lift.</p> <p>Pump malfunction.</p> <p>Pump low on fluid.</p>	<p>Do not exceed capacity of lift list on tag.</p> <p>Repair leak, refill reservoir.</p> <p>Verify pressure rating of pump says 5500 psi on label.</p> <p>Contact customer service to have pump serviced.</p> <p>Lower jackbeam and check fluid level. Replenish if required.</p>
Pump will not start when "UP" button is pushed.	<p>Insufficient air supply at pump.</p> <p>Leak in air supply line.</p> <p>Restriction in air line (i.e. Kink)</p> <p>Bad air motor.</p>	<p>Pump requires 90 – 120 psi of shop air.</p> <p>Locate and correct leak.</p> <p>Locate and correct restriction.</p> <p>Contact customer service to have pump serviced.</p>
Pump runs but will not lift to full height	Pump low on fluid.	Lower jackbeam and check fluid level. Replenish if required.
Lift does not hold pressure and will slowly descend.	<p>Fluid leak at pump, hose or cylinder.</p> <p>Lowering valve damaged.</p> <p>Pump malfunction.</p>	<p>Repair leak, refill reservoir.</p> <p>Replace damaged or missing parts.</p> <p>Contact customer service to have pump serviced.</p>
Lift lowers slowly or not at all.	<p>Mechanical Safety is engaged.</p> <p>Restriction in hydraulic system.</p>	<p>Release mechanical safety.</p> <p>Contact customer service to have lift serviced.</p>
 WARNING	<p>If jackbeam is in the raised position and will not come down, ensure that the mechanical safety is engaged prior to servicing the lift. Failure to do so can cause vehicle damage and/or personal injury.</p>	

11.0 Parts List: Exploded View

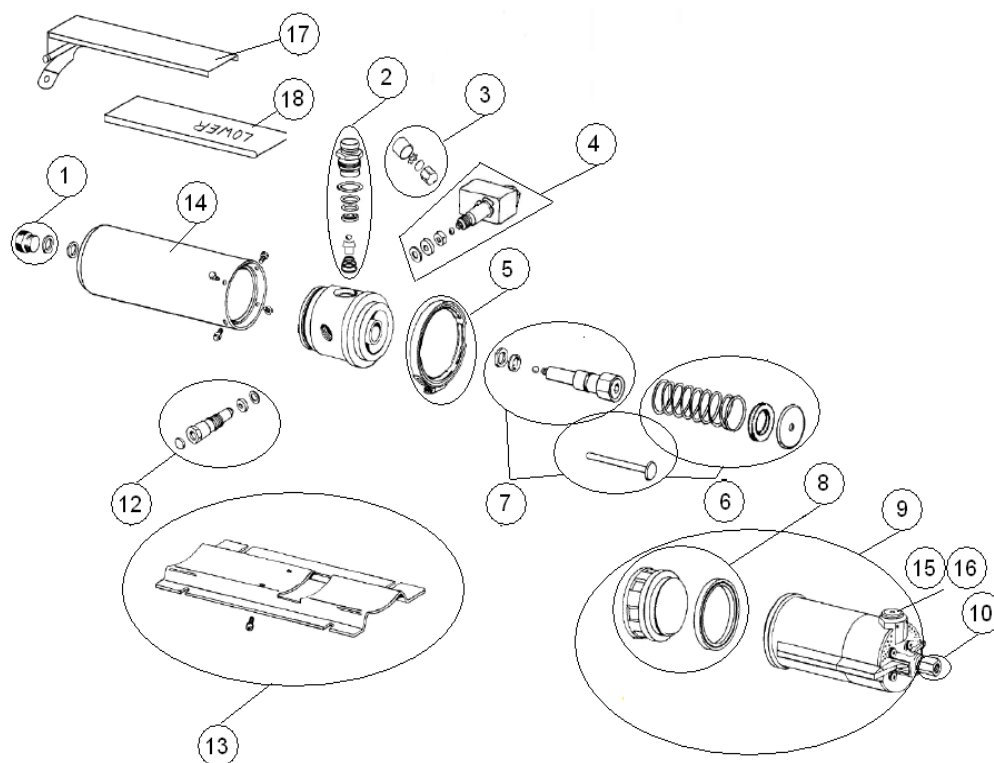


12.0 Jackbeam Parts List

REPLACE WORN, DAMAGED OR BROKEN PARTS WITH PARTS APPROVED BY THE ORIGINAL EQUIPMENT MANUFACTURER ONLY

ITEM	QTY.	DESCRIPTION	PART #
1	1	Baseframe Weldment	3-1127
2	1	Scissor Assembly	3-1124
3	8	Glide Block w/ C'Bore	1-3674
4	4	Shoulder Bolt, 5/8" x 1-1/4" Lg	6-3958
5	4	Nylon Lock Washer, 1/2"-13UNC	6-1553
6	1	Top Cover Weldment	3-1112
7	1	Air Jack Bracket	1-4006
8	2	Hx Head Bolt, 1/4"-20UNC x 1/2" Lg	6-0126
9	1	Terminal Bolt 3/4", long	6-0713
10	1	Adapter, 3/8" poly x 1/4" NPT M	6-0710
11	1	Air/Hydraulic Pump	6-1428
12	1	90 Deg. Pneumatic Elbow, 3/8" Poly x 1/4"NPT M	6-3010
13	2	Arm Weldment	2-2953
14	2	Stack Pad Assembly	1-3278
15	2	Roller Adapter Weldment	3-1138
16	4	Roller Assembly	2-0259
17	1	Safety Weldment	2-2951
18	4	Spring	6-0081
19	1	Cylinder Shaft, Lower	1-4049
20	1	Cylinder Shaft, Upper	1-4050
21	1	Hydraulic Cylinder Assembly	3-1075
22	1	Scissor Hinge Pin	1-1999
23	2	Hinge Pin	1-2361
24	2	Loop Clamp	6-3959
25	1	Safety Lever Assembly	1-3203
26	1	Rubber Grip Handle	6-3862
27	6	Flat Washer, 1/4" ID	6-0060
28	6	Lock Washer, 1/4" ID	6-0056
29	1	BHCS, 1/4"-20UNC x 3/4" Lg.	6-2565
30	1	BHCS, 1/4"-20UNC x 1" Lg.	6-3036
31	2	Stack Pad Adapter, 6"	2-1580
32	2	Stack Pad Adapter, 3-1/4"	1-3280
33	10	Set screw, 1/4"-20UNC x 1/2" Lg. (knurled)	6-0438
34	2	Flat Washer SAE, 3/8" ID	6-0062
35	6	Lock Washer, 3/8" ID	6-0058
36	6	Hex Hd bolt, 3/8"-16UNC x 3/4" Lg.	6-0030
37	2	Nylon Jam Nut, 3/8"-16UNC	6-3369
38	4	Spring	6-0081
39	4	Nylon Lock Nut, 3/8"-16UNC	6-0042
40	1	Adapter, 3/8 NPT M x 3/8 JIC M	6-0011
41	1	Flow Restrictor	6-3861
42	1	Polytube, 3/8" - 24" lg	8-0142
43	1	Hydraulic Hose Assembly	1-4063
44	4	Hex. Hd bolt, 1/4"-20UNC x 3/4" Lg.	6-0178
45	4	Hex Nut, 1/4"-20UNC	6-0032
46	1	Decal, Safety Release	6-3863
47	1	Raise & Lower Warning Decal	6-3970
48	1	Capacity Decal	6-1994
49	1	Decal, "UP"	6-3031
50	2	Keeper Bracket	1-2381

13.0 Air / Hydraulic Pump Exploded View



14.0 Air / Hydraulic Pump Parts List

ITEM	QTY.	DESCRIPTION	PART #
1	1	Reservoir Cap Assembly	6-3348
2	1	Release Guide Assembly	6-3349
3	1	Flow Restrictor Assembly	6-3350
4	1	Coupler Assembly	6-3351
5	1	Coupling V-Retainer	6-3352
6	1	Plunger & Spring Kit	6-3353**
7	1	Hydraulic Cylinder Assembly	6-3354**
8	1	Air Piston Assembly	6-3355
9	1	Air Motor Assembly	6-3356
10	1	Coupler Kit	6-3357
12	1	Relief Valve Assembly	6-3859*
13	1	Base	6-3360
14	1	Reservoir	6-3361
15	1	Poppet Guide Assembly	6-3365
16	1	Boot	6-3368
17	1	Handle	6-3366
18	1	Rubber Sleeve	6-3367

* Relief Valve adjustments should only be performed and tested by the manufacturer. Please specify pump part number in order to receive a properly adjusted Relief Valve.

** Plunger is included in both kits 6-3353 and 6-3354.

15.0 Maintenance Schedule

Records of all lift maintenance and operator training should be recorded in the following table.

Maintenance and Training Performed	Date	By	Notes

