

MODEL EELS901A

ROLLING JACK FOR SCISSOR LIFT

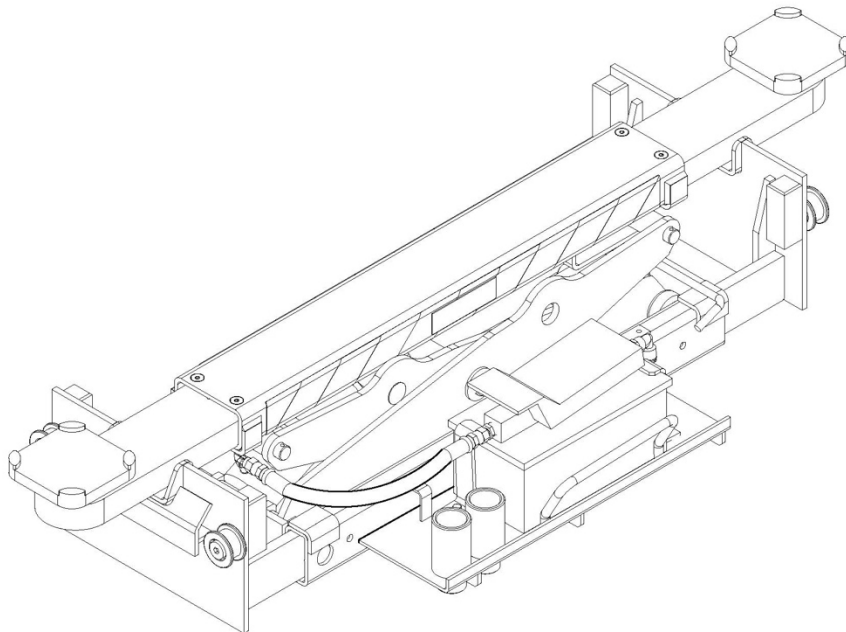
Standard Models:

EELR591A, EELR592A, EELR593A, EELR594A
EELR787A, EELR788A, EELR789A, EELR790A

Short Models:

EELR587A, EELR588A, EELR589A, EELR590A
EELR783A, EELR784A, EELR785A, EELR786A

7,000 lbs. Capacity



309 Exchange Avenue, Conway, AR 72032

TEL: 800-225-5786

IMPORTANT:

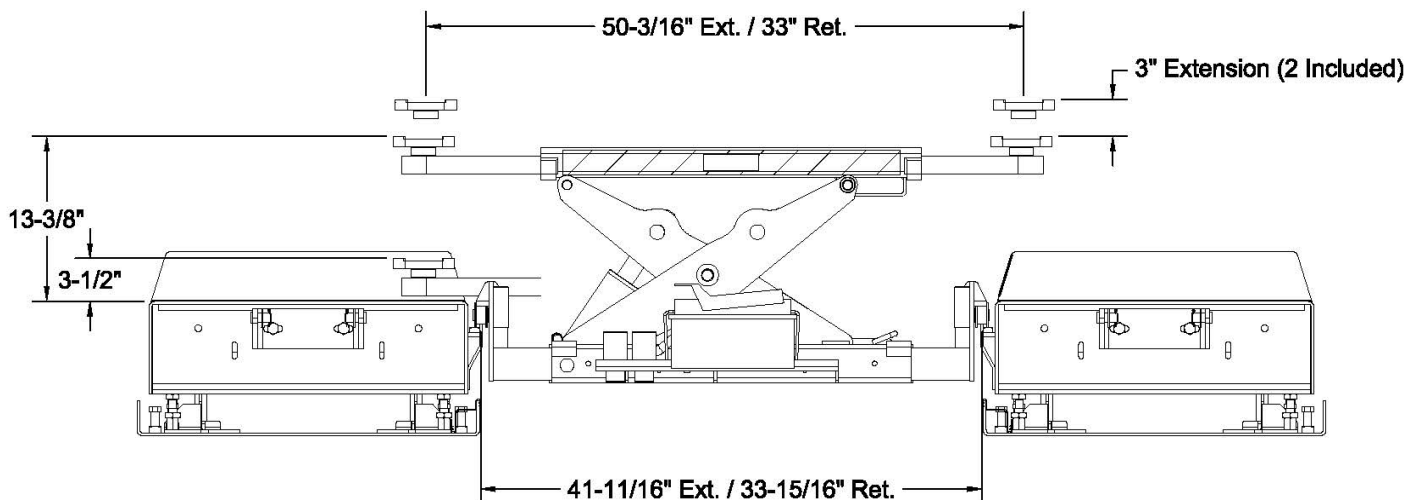
**READ THIS MANUAL COMPLETELY BEFORE INSTALLING or
OPERATING JACK**

CAUTION

- ◆ Before using this product, read and fully understand the operating instructions and all decals on the product. This is necessary to prevent injury to the operator and damage to the product.
- ◆ Roll jack forward before moving vehicle on or off lift.
- ◆ Do not attempt to use this jack for anything other than its intended purpose.
- ◆ If jack begins to tilt as the vehicle is raised, STOP! Lower jack and reposition the vehicle.
- ◆ Do not use this jack if it is visibly worn, distorted or damaged.
- ◆ Maximum air operating pressure not exceed 150 p.s.i.
- ◆ Always wear appropriate eye protection.

WARNING

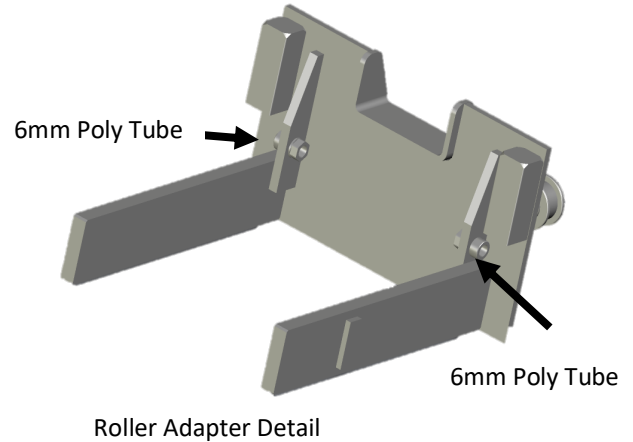
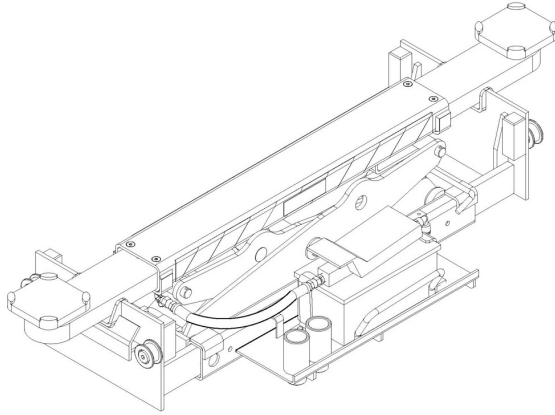
- ◆ Lifting capacity of this jack is 7000lbs (Hydraulic Pressure at Cap. = 5500 psi)
Exceeding this could result in severe personal injury or death.
- ◆ When the total lifting capacity of 2 rolling jacks differs from the rated capacity of the lift they are used on, the capacity of each jack should not exceed 1/2 the total capacity of the runways. Exceeding this could result in severe personal injury or death.
- ◆ Lift vehicle at manufacturer's recommended pick-up points only.
Vehicle weight must be evenly distributed on each jack lift pad.
- ◆ Keep fingers and hands clear of all pinch points at all times.



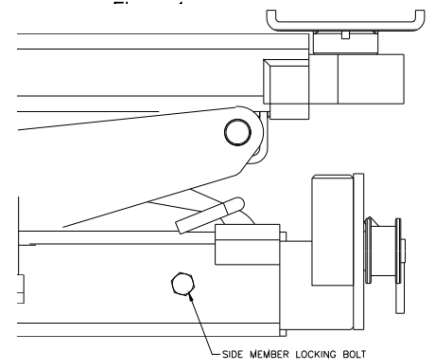
EELS901A Installation, Operation and Maintenance Manual

INSTALLATION

- 1) Install Air Supply Line as shown in Fig 1. Begin with the 6mm tube and elbow at the pump and route to the left or right roller adapter depending on whether it is the front or rear jack (front jack routing shown). Trim poly tube to length and assemble the female adapter.
- 2) Tube clamp and hardware is used for clamping the black poly tube from the pump to the pump bracket.



- 3) Place jack assembly on lift rack rails
- 4) Once side members are adjusted and jack is centered between the rails, tighten the (4) hex bolts (2 per side) to lock in place.
- 5) Connect jack airline to the deck.
 - a. Attach the coiled hose to the Tee in the runway and to the jacks.
 - b. Remove two NPT 1/4" PLUG's before connecting the short pigtail with the swivel end to the tee.
 - c. Install at driver side deck.



Operation

Note: Before lifting a vehicle, operate the jack through a couple of cycles to become familiar with the controls.

- 1) Roll jack forward before moving vehicle on lift rack. Be sure vehicle is centered on rack, apply parking brake and chock wheels.
- 2) Roll jack(s) to the vehicle manufacturer's recommended pick-up points. Extend lift pad arms to proper lift points. Use lift pad spacers if necessary.
- 3) Raise jack by pushing on foot pedal on pump.
- 4) Raise vehicle to desired height.
- 5) Lower jack onto lock.
- 6) To lower jack completely, raise off of lock and while holding lock release handle open lower jack. Push lift pad arms in, remove lift pad spacers (if used). Roll jack forward before moving vehicle off rack.

Loss of power

If for any reason the lift will not raise off the locks or the locks will not retract, consult factory authorized personnel.

DO NOT OVERRIDE ANY SAFETY FEATURE IN AN ATTEMPT TO LOWER THE LIFT.

EELS901A Installation, Operation and Maintenance Manual

Maintenance

Daily: Inspect jack and its components for damage or excessive wear. Replace parts as required. See parts list.

Inspect air/hydraulic system for leaks. Check in-line lubricator oil level.

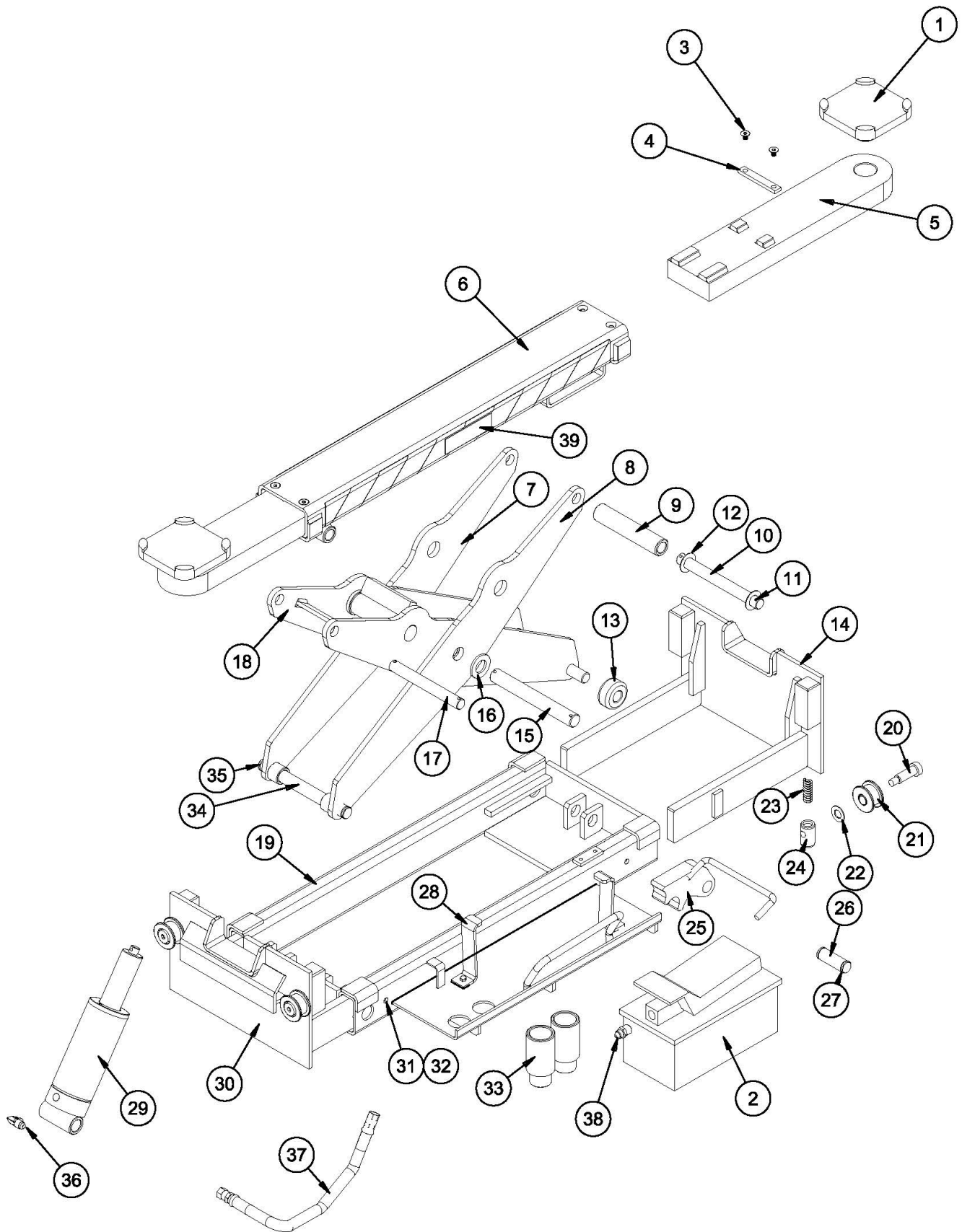
Annually: Check hydraulic pump fluid level. When jack is completely lowered remove breather plug and check oil level. Oil should be at top of filler plug hole.

IMPORTANT!

Failure to keep lift free of corrosive agents and solvents will lead to reduced service life, which could result in property damage and/or personal injury. If any problems are encountered, contact your local service representative.

EELS901A Installation, Operation and Maintenance Manual

Parts Breakdown



EELS901A Installation, Operation and Maintenance Manual

Item Number	Part Number	Qty/Jack	Description
1	RJ9-04-00	2	Footpad
2	9-0452CN	1	Air/Oil Pump
3	VS10-31-08	4	M8 x 12 Flat Head Screw
4	RJ6-19	2	Stop Bar
5	RJ6-02CH	2	Arm
6	RJ7.5-01	1	Sleeve
7	RJ7.5-07R	1	Outer Scissor Plate, Rear
8	RJ7.5-07F	1	Outer Scissor Plate, Front
9	RJ6-06-04	1	Upper Pin Roller
10	RJ6-13	1	Upper Pin
11	VS10-20-10	6	5mm Roll Pin
12	X10-099	4	20mm Washer
13	RJ6-18	2	Roller
14	RJ7A-15	2	Side Member Weld
15	RJ6-08	1	Main Pin
16	RJ6-23	2	Spacer Washer
17	RJ6-12	1	Upper Pin, Fixed End
18	RJ7.5-06	1	Internal Scissor
19	RJ7.5-11	1	Jack Body
20	RJ6-27CH	4	16mm Dia. Shoulder Bolt
21	RJ6-17CH	4	Wheel
22	RJ6-24CH	4	Nylon Washer
23	RJ6-26A	4	Compression Spring
24	RJ6-25CH	4	Carrier
25	RJ7.5-16	1	Lock
26	RJ7.5-20	1	Lock Pin
27	RJ7.5-35	2	21mm Snap Ring
28	RJ15-25	2	Pump Bracket
29	RJ6-09CHA	1	Cylinder, Flow-Restricted
30	RJ7A-15-00	2	Side Member Assembly
31	X10-077	4	M10 x 25 HHCS
32	RJ6-38	4	M10 Hex Nut
33	RJ6-05	4	3" Stack Pad
34	RJ6-14	1	Cylinder Pin
35	RJ6-40	2	15mm Snap Ring
36	RJ6-22CH	1	Hydraulic Elbow
37	RJ6-21CH	1	Hydraulic Hose
38	JSJ4-19	1	Straight Union 3/8"NPT- #6 JIC
39	Z16777	1	Jack Capacity Decal

IMPORTANT!

Replace all worn, damaged, or broken parts with parts approved by **Snap-on Equipment Inc.** or with parts meeting **Snap-on Equipment Inc.** specifications.
(1-800-225-5786)

EELS901A Installation, Operation and Maintenance Manual
Jack Airline Connection Components

Terminal bolt	JBC90673000 (6mm Poly Tube 1/4NPT F)
Poly tube BL 6mm	JBC80141CN00 qty. 2 feet
Recoil hose	JBC60337000 (in 14K accessory box)
Tube Clamp 8mm	JBC60170000 (in Jack accessory box)
6-3010CN	6-3010CN (90 degree elbow attached to the pump)
Hardware for tube is <ul style="list-style-type: none">• 6mm washer• 6mm spring washer• 6mm nut• 6mm bolt	Hardware <ul style="list-style-type: none">• JBC90130000• JBC90131000• JBC90169000• JBC90554000

EELS901A Installation, Operation and Maintenance Manual
Product Change Notice

REV.	PCN	DESCRIPTION	DATE	BY
A		Spelling, font and format changes. Addition of a PCN section	4/17/20	ND
A		Changed installation procedure and added some graphics. Summarized airline connection components. Added product change notice	4/22/20	ND