

PARTS MANUAL



MODEL EEWA542TH3

All information contained or disclosed in this document is considered confidential and proprietary by Snap-on. All manufacturing, use, reproduction, and sales rights are reserved by Snap-on and the information contained herein shall not be used in whole or in part without the express written consent of Snap-on.

TEEWA542TH3

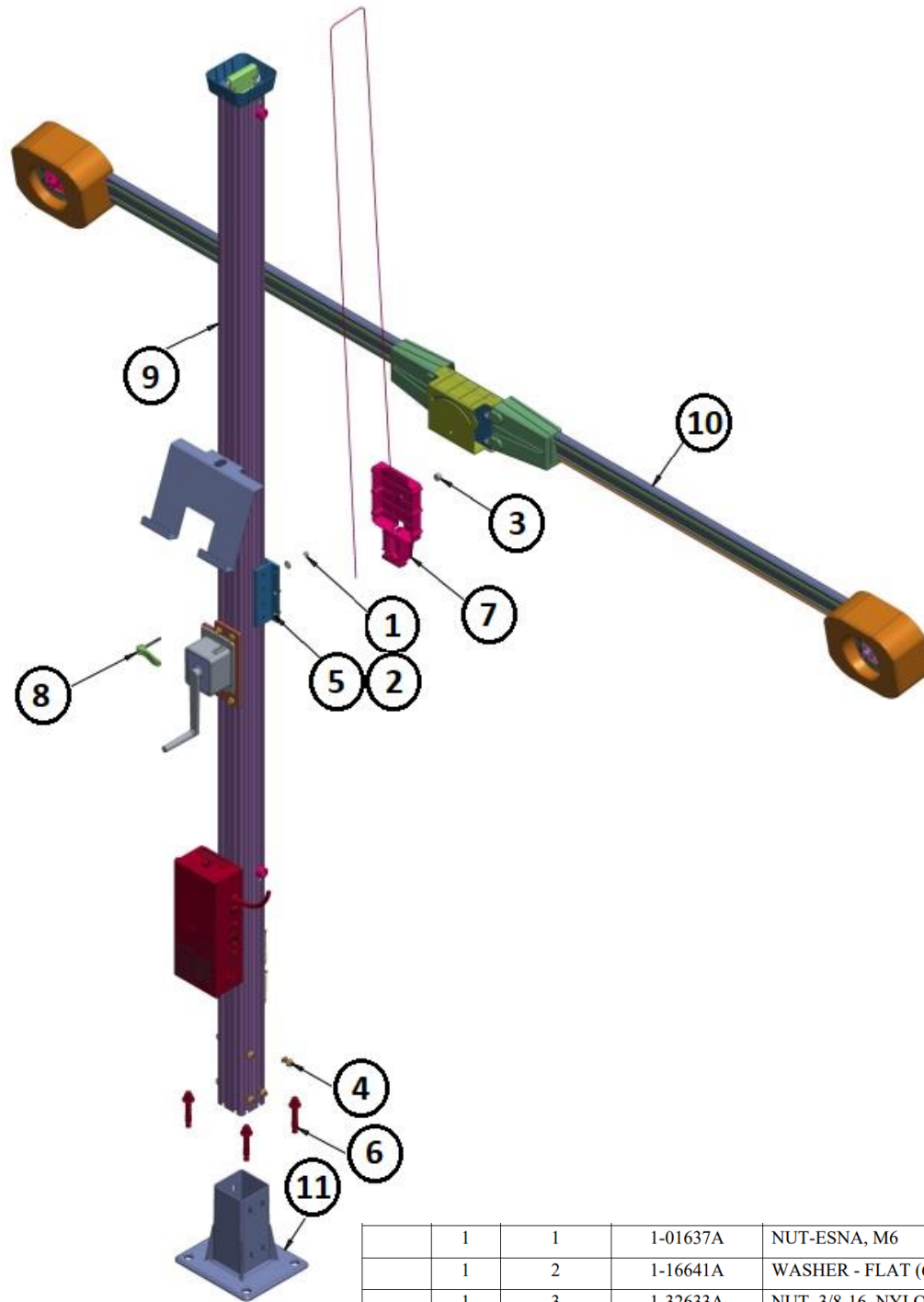
Table of Contents

BOM – COMPLETE, EEWA741TH3	5
CAD ASSEMBLY COMPLETE (EAA0533J21C).....	6
POST ASSEMBLY (EAA0533J18C).....	7
BEAM ASSEMBLY (EAA0533J19C).....	8 & 9
ASSY – POST, BRAKE (EAA0531J21A).....	10
SUP POWER ASM (EAA0483J21A).....	11-13
WHEEL CLAMP / TARGET (LF, RF, LR, RR).....	14
WHEEL CLAMP (EAA0446J79A).....	15-16
ACCESSORIES.....	17

*** INDICATES RECOMMENDED SERVICE PARTS**

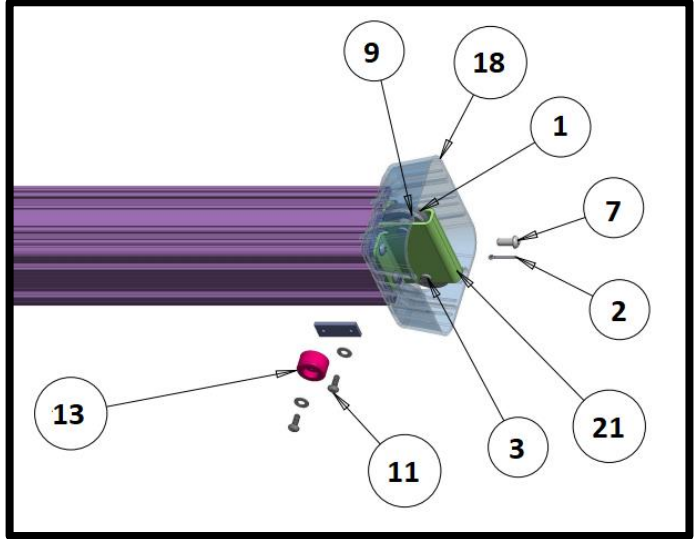
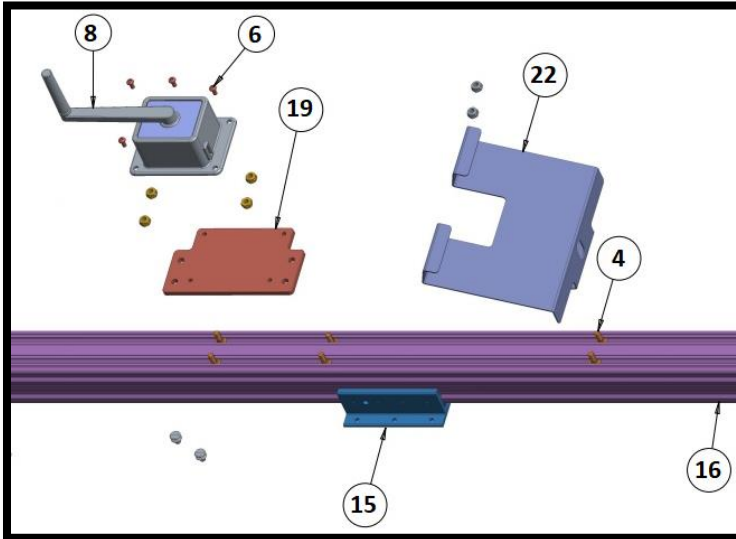
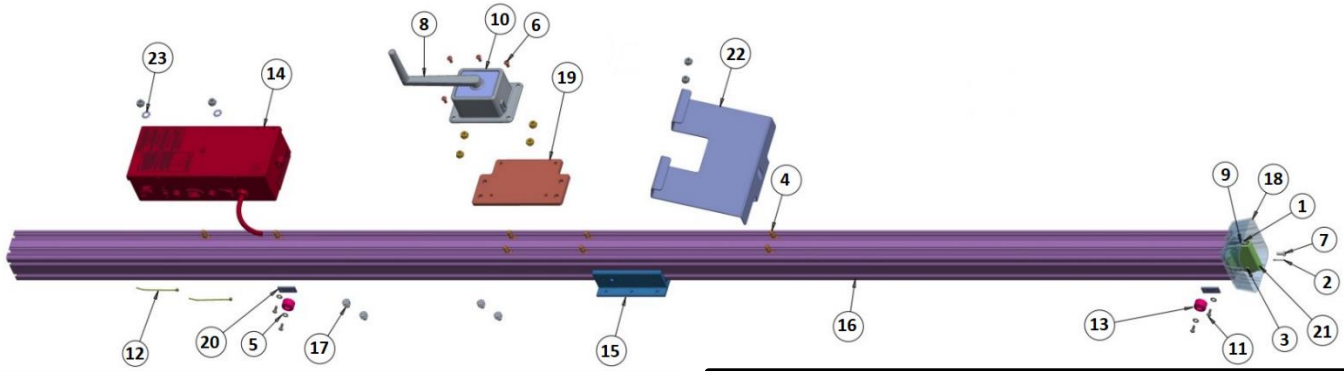
SYM	REQD	ITEM	PART NUMBER	DESCRIPTION
	1	1	EAA0533V21C	TOWER /BEAM ASSEMBLY V2180
	1	2	EAK0363J83A	KIT, SHIPPING, 113"
	1	3	EAC0142J54A	DECAL, JBC
	1	4	EAK0350J80D	KIT, CLAMP/TGT, AC200 II – XD, NO PACKING
	1	5	88931	POWER CORD, 115V
	1	6	55502	STEERING WHEEL CLAMP
	1	7	00096	BRAKE DEPRESSOR
	1	8	5403	INSTALLATION REGISTRY CERTIFICATE
	2	9	EAC0090J82A	WHEEL CHOCK, RUBBER
	1	10	EAL0343J76A	SERIAL/ELECTICAL LABEL
	1	11	TEEWA741TH30	INSTALL INSTRUCTION
	1	12*	ED-18003	POST PRODUCTION ALIGNMENT AUDIT
	1	13	3-23706D1	I-PAD
	2	14	EAE0078J14A	WIFI DONGLE
	1	15	ZEEWA741TH31	QUICK USER GUIDE (OPERATORS MANUAL)
	1	16	1-14785B	PROTECTIVE COVER, IPAD
	1	17	3-26606A	USB SPLITTER
	1	18	4-01880A	LEVEL VIAL
		19		
	2	20	EAA0446J76B	ASSY., HANGER, KIOSK, AC200 II

EAA0533V21C: CAD ASSEMBLY, COMPLETE

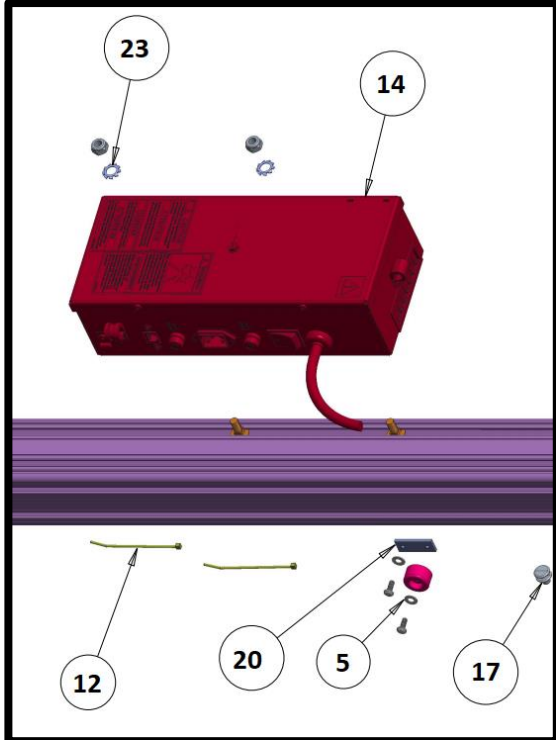


	1	1	1-01637A	NUT-ESNA, M6
	1	2	1-16641A	WASHER - FLAT (6mm)
	1	3	1-32633A	NUT, 3/8-16, NYLOCK
	8	4	1-39706B	SCREW-T, M8 BLACK
	5	5	1-44888A	SCREW M6x16 ISO 7380
	4	6	8-02440A	STUD ANCHOR BOLT, 1/2 X 3.75"
	1	7	EAA0531J22A	ASSY, JOINT
	1	8	EAA0531J23A	CAM LEVER - PIVOT
	1	9	EAA0533V18C	POST ASSEMBLY, JBC
	1	10	EAA0533V19C	BEAM ASM, JBC
	1	11	EAC0150V02A	DIE CAST BASE
	1	12	2-09457	CLAMP METAL, 3/8
	2	13	1-53584A	INSERT, UHMW, 3.5" LONG

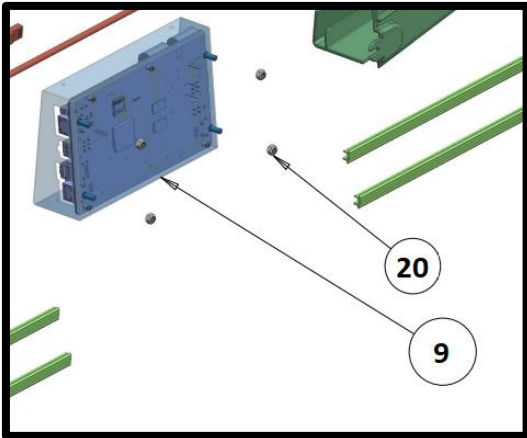
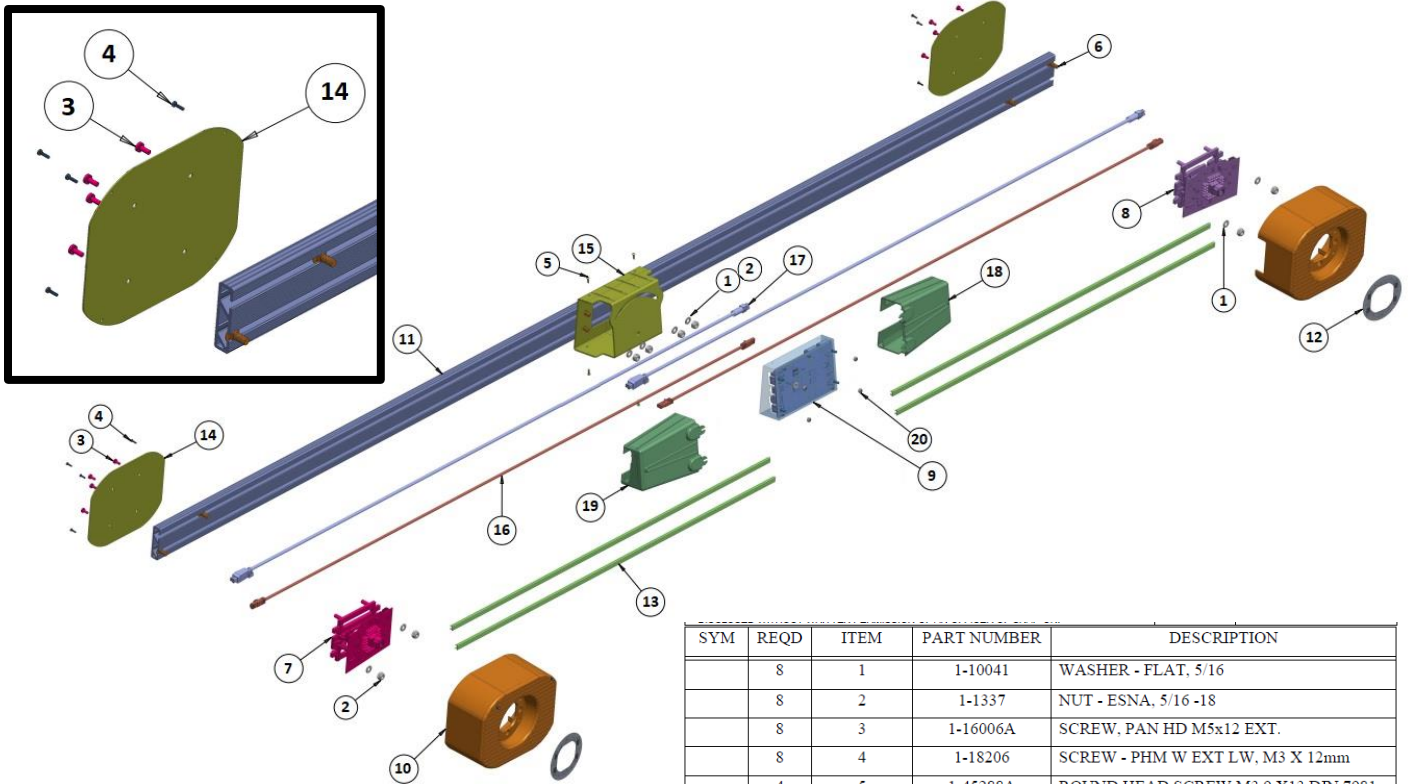
EAA0533V18C: POST ASSEMBLY



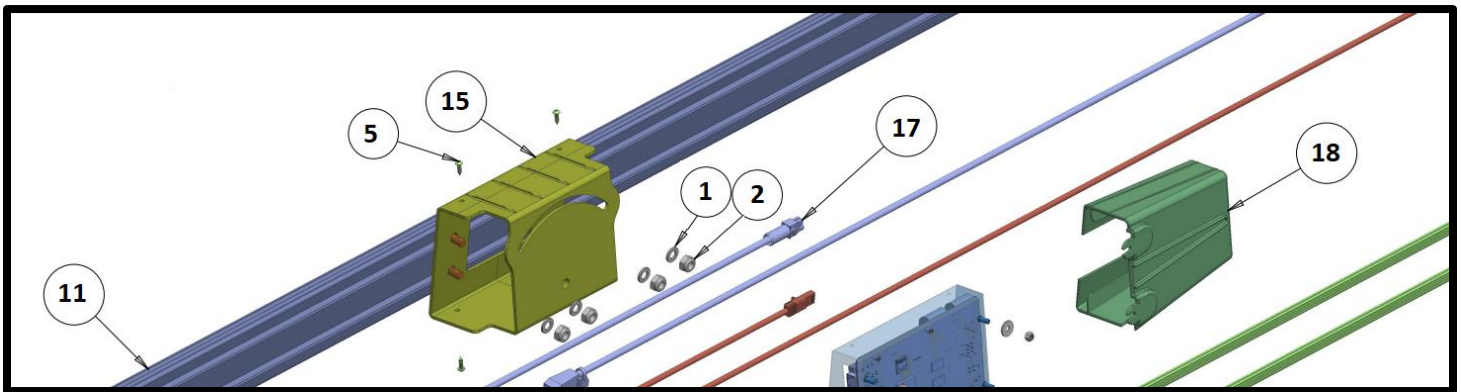
SYM	REQD	ITEM	PART NUMBER	DESCRIPTION
	2	1	1-50384A	PULLEY - CABLE ROUTING
	2	2	1-10187A	COTTER PIN 3/32"x3/4"
	2	3	1-10287A	CLEVIS PIN DIA 1/4" USABLE LG13/16"
	8	4	1-39706B	SCREW - T, M8, BLACK
	8	5	1-18741A	WASHER - FLAT
	4	6	1-23988A	SCREW, BHCS, M6x12mm
	4	7	1-15824A	3/4 SELF TAPPING
	1	8	1-43784B	WINCH 152-1-2 (45KG) RIGGING
	4	9	1-45788A	NYLON_FLAT_WASHER 1/4"
	1	10	EAL0484J58A	DECAL - WINCH CRANK DIRECTION
	8	11	1-7106	SCREW - PMS, #10-24 X 1/2
	8	12	5-2345	TIE - CABLE 4" LG X .10" WD
	4	13	8-16618A	RUBBER BUMPER
	1	14	EAA0483J21A	SUP - POW, BEAM
	1	15	EAA0533V24A	ASSY, POST SLIDE
	1	16	EAC0090J90A	TOWER - EXTRUSION CLEAR
	4	17	EAC0129J80A	TAB - SLIDE, TOWER
	1	18	EAC0150V18A	POST CAP
	1	19	EAC0150V23A	WINCH ADAPTER
	4	20	EAS2072J84A	PLATE - STRAIN RELIEF
	1	21	EAS2248V18A	PULLEY SUPPORT
	1	22	EAS2248V22A	IPAD HOLDER
	2	23	13148	EXTERNAL-TOOTH WASHER

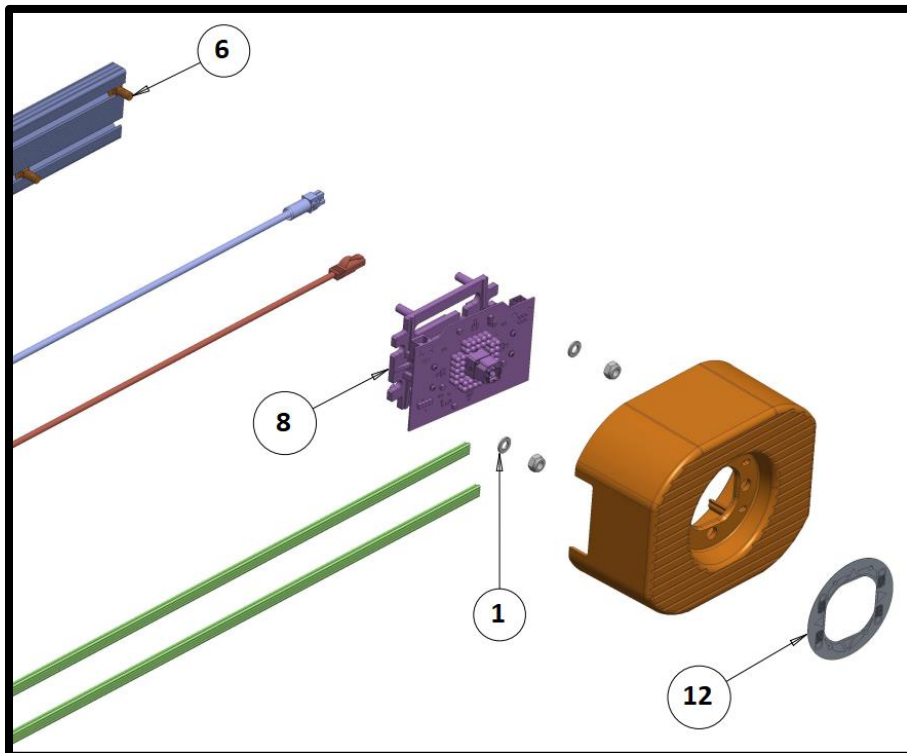
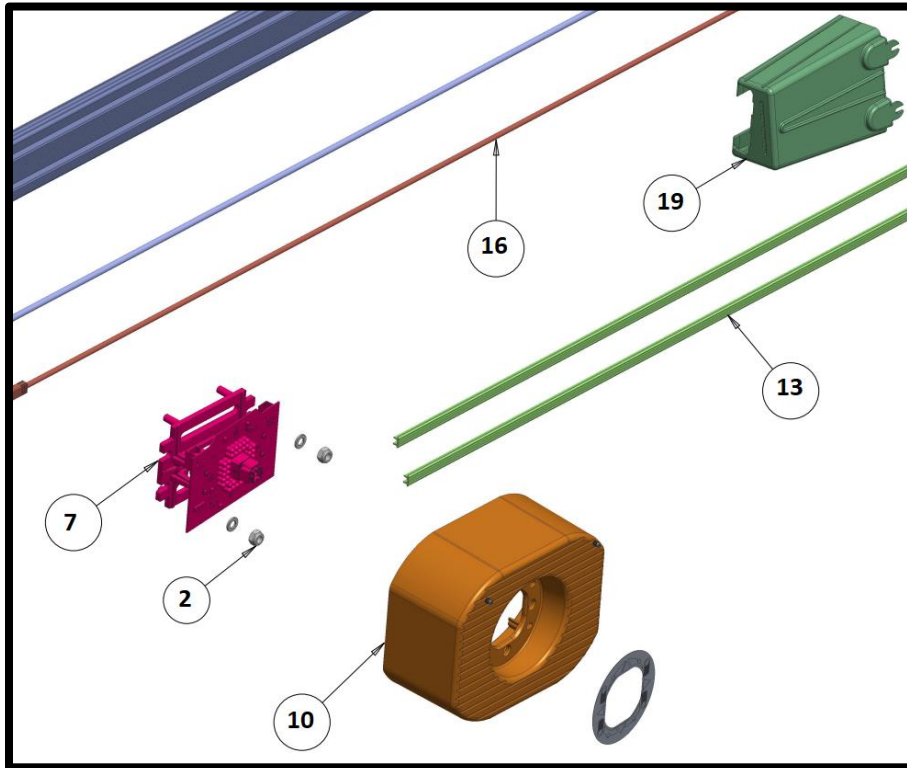


EAA0533V19B: BEAM ASSEMBLY



SYM	REQD	ITEM	PART NUMBER	DESCRIPTION
	8	1	1-10041	WASHER - FLAT, 5/16
	8	2	1-1337	NUT - ESNA, 5/16 -18
	8	3	1-16006A	SCREW, PAN HD M5x12 EXT.
	8	4	1-18206	SCREW - PHM W EXT LW, M3 X 12mm
	4	5	1-45288A	ROUND HEAD SCREW M3.9 X13 DIN 7981
	8	6	1-705A	BOLT-CARRIAGE 5/16-18 X 3/4
	1	7	EAK0363J87A	KIT - LH CAMERA *
	1	8	EAK0363J94A	KIT - RH CAMERA *
	1	9	EAK0363J95A	KIT - PROCESSOR *
	2	10	EAC0150V05A	CAMERA COVER
	1	11	EAC0150V08C	CAMERA BEAM CLEAR
	2	12	EAL0415J16A	VODI - UA2, UHR, BLK
	4	13	EAM0073J56A	TRIM - CAM BEAM, RED
	2	14	EAS2248V05B	DIE CAST CAMERA BACK PLATE
	1	15	EAS2248V15B	JOINT BRACKET, BEAM-POST
	2	16	EAW0291V01A	ETHERNET CABLE CAT6A, LENGTH 1.6M
	2	17	EAW0391V02A	CABLE ASSY-CAMERA, DRAGON
	1	18	EAC0142J55A	COVER, CABLES, RH
	1	19	EAC0142J56A	COVER, CABLES, LH
	4	20	1-13633B	NUT - KEPS, M5, BLACK

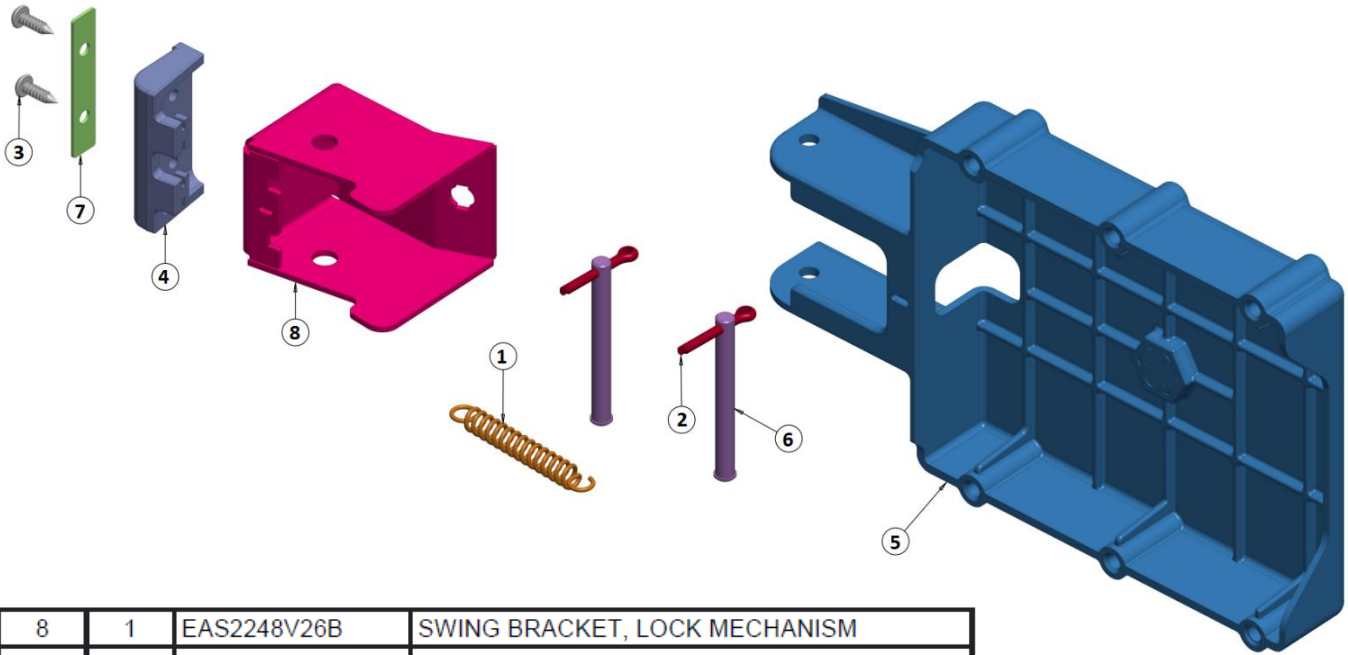




#7 EAK0363J87A: KIT – LH CAMERA *

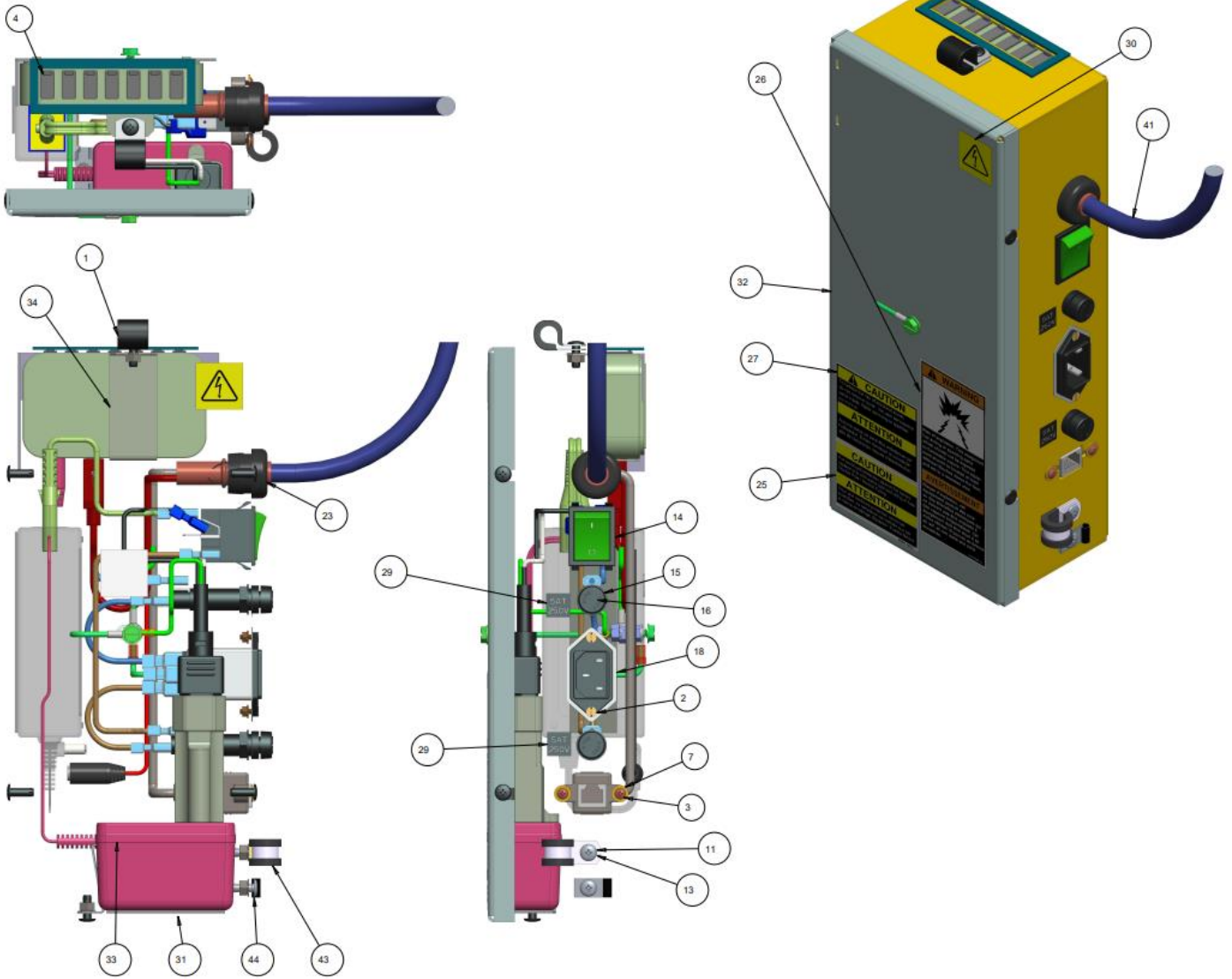
#8 EAK0363J94A: KIT – RH CAMERA *

EAA0531J21A: ASSY – POST, BRAKE

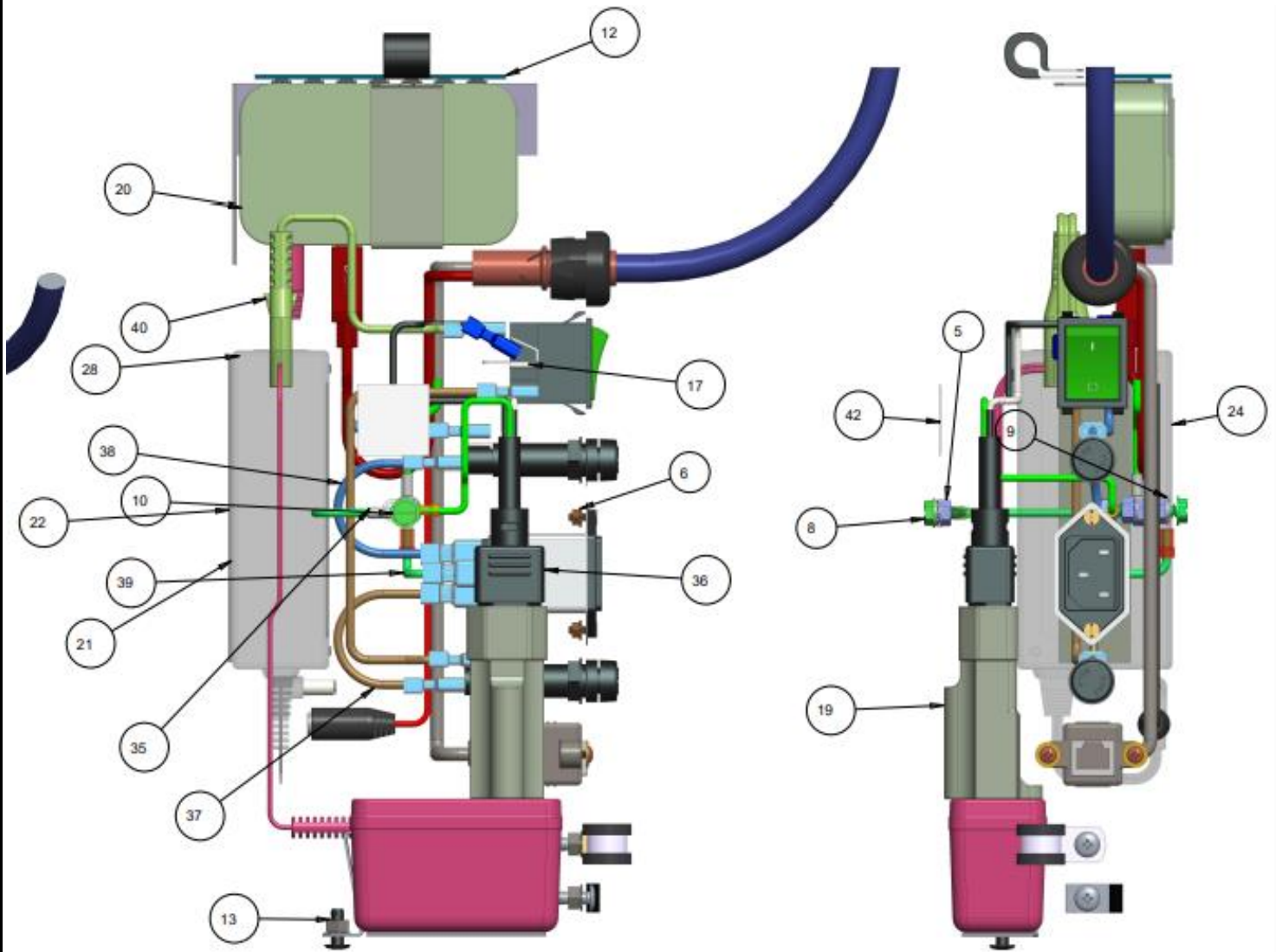


8	1	EAS2248V26B	SWING BRACKET, LOCK MECHANISM
7	1	EAS2248V25A	LOCK PLATE RUBBER BRAKE
6	2	EAM0200V24A	HOLDER PIN, LOCK MECHANISM
5	1	EAC0150V22A	TURNTABLE BRACKET
4	1	EAC0150V19A	RUBBER BRAKE
3	2	1-45288A	ROUND HEAD SCREW M3.9 X13 DIN 7981
2	2	1-10187A	COTTER PIN 3/32"x3/4"
1	1	1-12189A	EXTENSION SPRING
SYM	REQD	PART NO	DESCRIPTION

EAA0483J21A: SUP – POWER, ASM



EAA0483J21A: SUP – POWER, ASM



EAA0483J21A Bill of Material

44	1	1-06282C	METAL CLAMP, 3/16" DIA ID
43	1	1-06282B	CLAMP METAL, 1/4" DIA ID
42	1	EAL0392J19A	LABEL-GROUND
41	1	EAW0290J56A	CABLE - SNAKE
40	1	EAW0290J47A	CORD - POWER, IEC C7, FIGURE 8
39	1	EAW0290J20A	GRND WIRE - 6 IN, GR/YL, 16 AWG
38	2	EAW0243P23A	LINK WIRE, BLUE
37	2	EAW0243P22A	LINK WIRE, BROWN
36	1	EAW0235J74A	CORD - POWER, PC IN BOX
35	1	EAW0235J36A	CABLE ASM - GROUND 12"
34	1	EAS2223J41A	BRACKET-HUB POWER
33	1	EAS2223J40A	BRACKET-USB HUB
32	1	EAS2203J20A	COV - FRONT, POW
31	1	EAS2223J42A	COV - BACK, POW
30	1	EAL0345P54A	ELECTRICAL WARNING LABEL
29	2	EAL0345P51A	LABEL FUSE 5 A
28	1	EAE0049J84C	POWER SUPPLY 19VDC
27	1	111245	LABEL CAUTION ELECTRICAL
26	1	111243	LABEL-WARNING EXPLOSION
25	1	86164	LABEL-WARNING, FUSE RATING
24	1	8-23762A	LABEL - EARTH SYMBOL
23	1	8-10419A	STRAIN RELIEF .88 DIA HOLE
22	4	5-14526A	VELCRO HOOK
21	4	5-14426A	VELCRO LOOP
20	1	3-23106A	USB HUB - 7 PORT, EXT. POWER
19	1	2-78266A	RECPT, NEMA 5-15 TO IEC
18	1	2-37348A	AC RECEPTACLE & LINE FILTER (IEC)
17	2	2-31001A	TERMINAL - QUICK CONNECT
16	2	2-18451A	FUSE - 5A SLOW BLOW
15	2	2-15651A	FUSE HOLDER
14	1	2-14258A	ROCKER SWITCH, ILLUMINATED, GREEN
13	4	1-7733	NUT - KEPS, #10-24
12	1	EAC0129J82A	GASKET - ELECT BOX
11	8	1-62601A	MSCR - RND HD, 10-24 X 1/2 BLK
10	1	1-38984A	SCREW - HHW, GND, #10-32 X 1.0
9	3	1-3347	WASHER - LOCK, M5
8	1	1-21484A	GROUNDING SCREW 10-32x1/2"
7	2	1-16341A	WASHER - FLAT (3mm), 9mm OD
6	2	1-15033	NUT - KEPS, M3
5	5	1-13633A	NUT - KEPS, M5
4	7	2-90666A	COVER- USB,DUST
3	2	1-12224A	SCREW - PHM, M3 X 8mm
2	2	1-11103	SCREW - FHM, M3 X 10mm
1	1	2-09457	CLAMP METAL, 3/8
SYM	REQD	PART NO	DESCRIPTION

Wheel Clamp / Target

North America (AC200 II):

EAA0395J10B – WHEEL CLAMP ASSY LF

EAA0395J14B – WHEEL CLAMP ASSY RF

EAA0381J24B – WHEEL CLAMP ASSY LR

EAA0381J23B – WHEEL CLAMP ASSY RR

Europe (AC100 II):

EAA0395J10C – WHEEL CLAMP ASSY LF

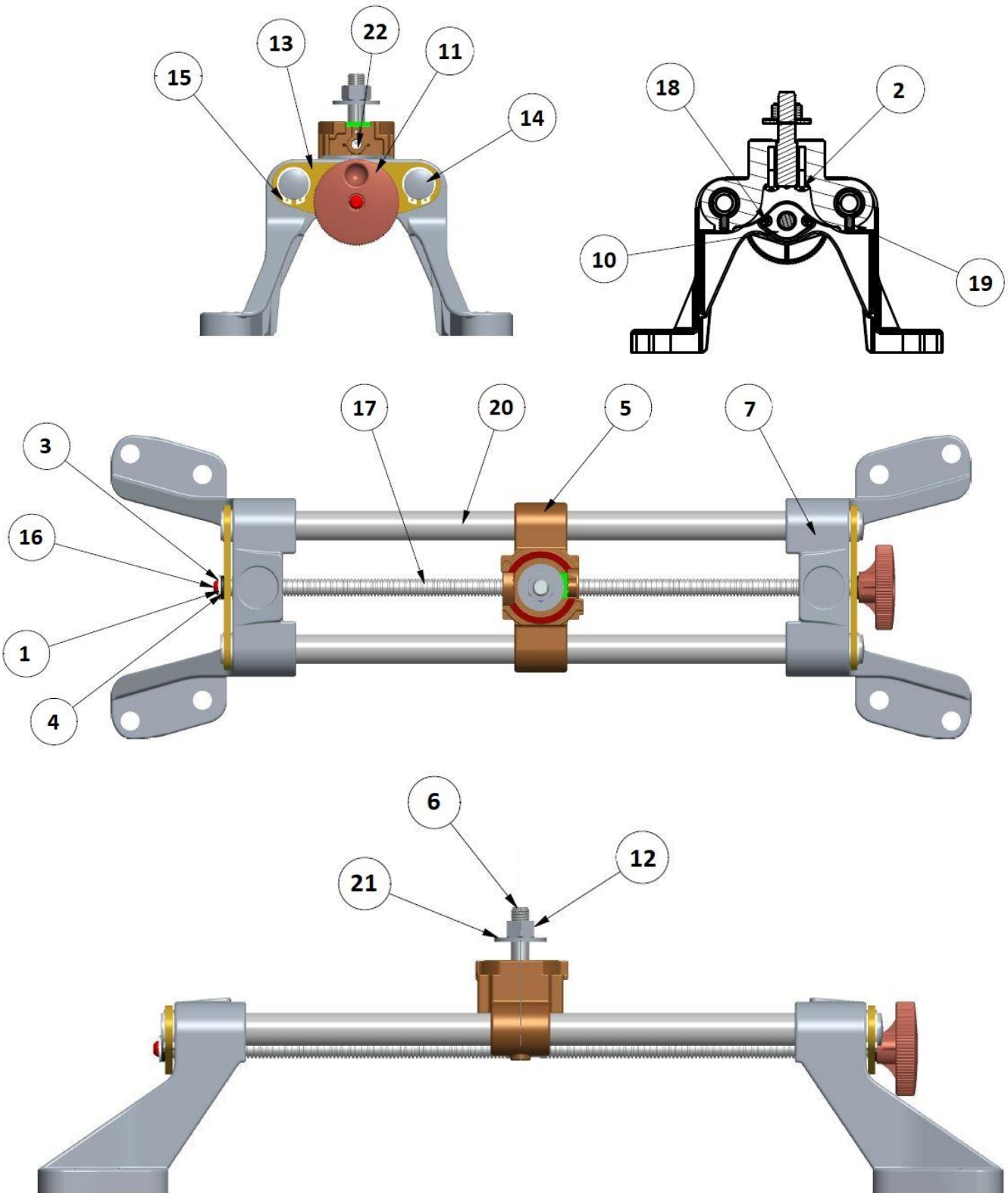
EAA0395J14C – WHEEL CLAMP ASSY RF

EAA0381J24C – WHEEL CLAMP ASSY LR

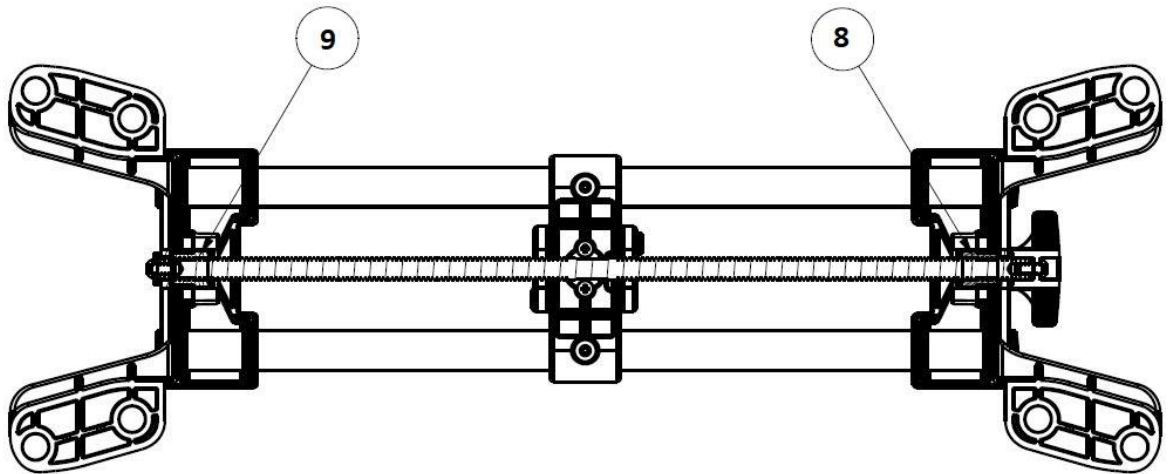
EAA0381J23C – WHEEL CLAMP ASSY RR

ITEM	REQD	PART NO.	DESCRIPTION
1	2	1-20733A	NUT – JAM, M8
2	2	1-54810A	SCREW – SET., 8x20MM, CONE PT
3	1	EAK0320J33A	KIT – FRONT XD TARGET
		EAK0305J65A	KIT – XD TARGET, REAR
4	1	EAA0446J79A	ASSY., WHEEL CLAMP, AC200 II, FRONT
		EAA0446J79B	ASSY., WHEEL CLAMP, AC100 II, FRONT
5	1	EAL0415J09A	DECAL, INDICATOR, LF
		EAL0415J10A	DECAL, INDICATOR, LR
		EAL0415J11A	DECAL, INDICATOR, RR
		EAL0415J12A	DECAL, INDICATOR, RF
	1	EAK0268J41B	KIT, GRABBER, DUAL END (SET OF 4)
	1	1-08584A	CORD-BUNGEE, BLACK 16”

EAA0446J79A: WHEEL CLAMP, AC200 II



EAA0446J79A: WHEEL CLAMP, AC200 II



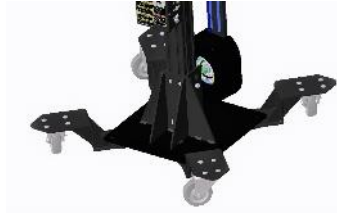
22	1	I-54810A	SCREW - SET, M8 X 20mm, CONE PT
21	1	I-1041	WASHER-FLAT, 1/2 ZINC
20A		EAM0143V02A	TUBE - WHEEL CLAMP, SHORT
20	2	EAM0143V01A	TUBE-WHEEL CLAMP, LONG
19	2	I-22188A	SET SCREW, M6x12MM
18	4	I-26506A	SCREW-PHMS, M4x0.7MMx25MM
17A		EAM0143V04A	SCREW-DOUBLE LEAD, SHORT
17	1	EAM0143V03A	SCREW-DOUBLE LEAD, LONG
16	2	I-23988A	SCREW-BHCS, M6x12MM
15	8	I-17677A	RING-RETAINING, 21MM, ZN
14	2	EAC0079J51B	PLUG-RUBBER, 19MM HOLE
13	2	EAS2191V01A	PLATE-RETAINER, SMALL
12	1	I-933	NUT-1/2-13 HEX
11	1	EAC0133V04A	KNOB, WHEEL CLAMP
10	2	EAC0079J50A	COVER-FEED SCREW, LOCK
9	1	EAM0044J20A	BUSHING-THREADED, BRASS, RH
8	1	EAM0044J24A	BUSHING-THREADED, BRASS, LH
7	2	EAC0133V01A	BRACKET, HIGH FOOT
6	1	EAM0143V05A	SHAFT-TARGET, SHORT
5	1	EAC0133V03A	BRACKET, CENTER
4	2	EAC0079J52A	WASHER-THRUST, PLASTIC
3	2	I-3447	LOCKWASHER M6, INT. TOOTH
2	2	I-16006A	SCREW, PH, M5x12MM, BLK
1	1	I-14144A	WASHER-FLAT, M6
SYM	REQD	PART NO	DESCRIPTION

(17A and 20A are AC100 II parts)

ACCESSORIES:

EAK0363J88A

MOBILITY CART



EAK0268J63B

QUICK CLAMP, AC100/AC200 II



EAK0256J71A

RIDE HEIGHT MEASURING KIT



EAK0320J58A

LIVE RIDE HEIGHT MEASURING KIT



EAK0268J62A

WHEEL CLAMP AC100 II, AC200 II, 4" DIAMETER EXTENSION KIT



EAK0289J62B

WHEEL CLAMP AC100 II, AC200 II, 2" HEIGHT EXTENSION KIT



