

WHEEL ALIGNER



V3300 - Geoliner 770 Parts Manual

TEEWA552B3

All information contained or disclosed in this document is considered confidential and proprietary by Snap-on. All manufacturing, use, reproduction, and sales rights are reserved by Snap-on and the information contained herein shall not be used in whole or in part without the express written consent of Snap-on.

Table of Contents

BOM V3300 - GEOLINER 770.....	3
KIOSK.....	4
ELECTRICAL SHELF.....	6
LEFT HAND CAMERA ARM.....	8
CAM-CAM.....	10
RIGHT HAND CAMERA ARM.....	12
CAM-TAR.....	14
TOWER.....	16
SLIDE CAR.....	18
AC400 WHEEL CLAMP.....	20
AC100 / AC200 WHEEL CLAMP.....	22

BLANK PAGE

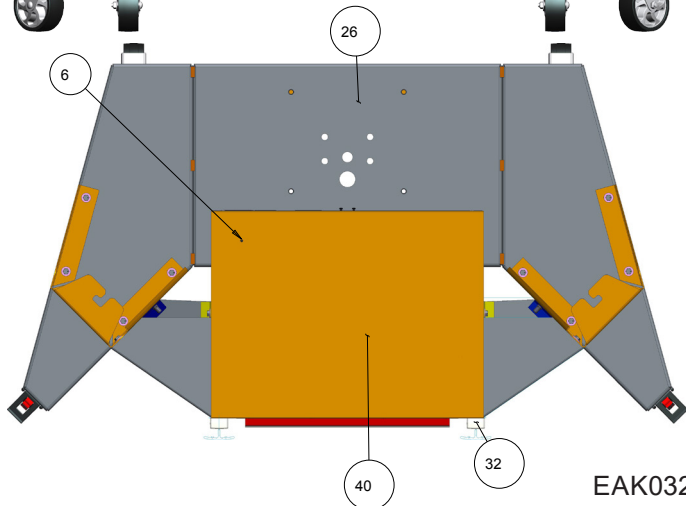
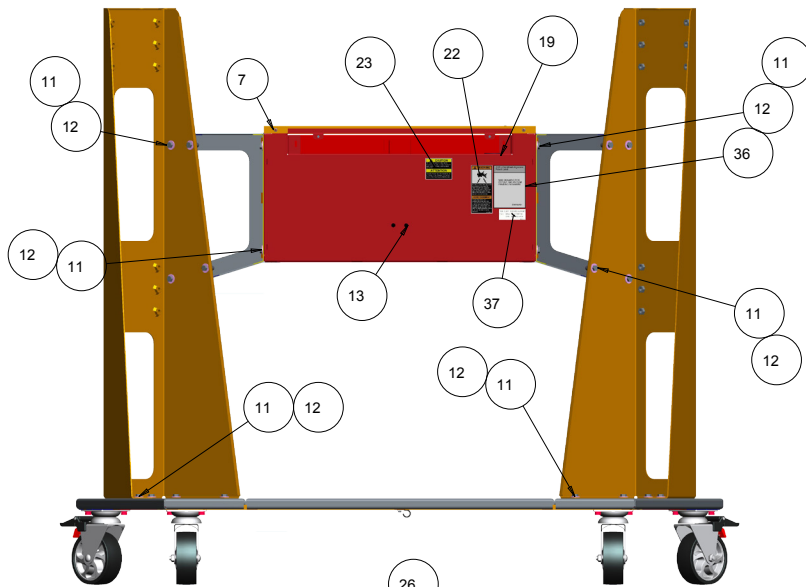
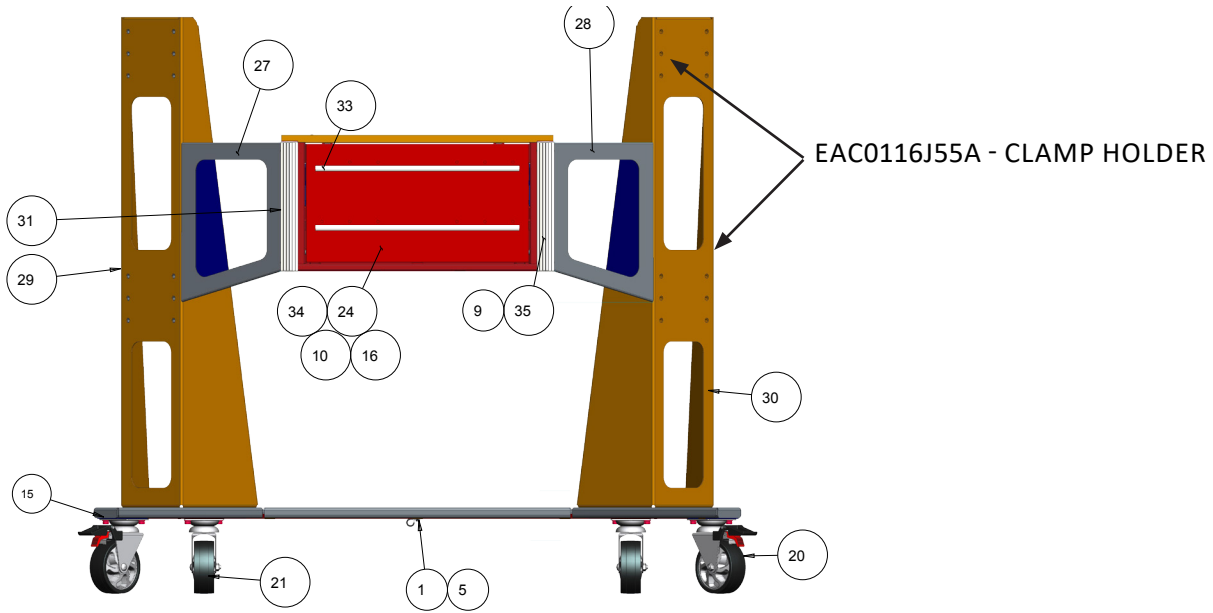
TEEWA552B3 - V3300 - GEOLINER 770 SPARE PARTS

BOM V3300 - GEOLINER 770

PART NUMBER	DESCRIPTION
EAK0350J23A	KIT – V3300 SHIPPING
3-08006A	KIT – MOUSE/KEYBOARD, USB
EAK0268J05A	PRINTER KIT - USB
EAW0290J26A	POWER CORD-5 METERS
EAK0277J82A	LITERATURE PACK GENERIC
EAL0343J76A	LABEL - SERIAL
86333	ENVELOPE PADDED 6X10
96	DEPRESSOR ASSY. PEDAL
55502	STEERING WHEEL HOLDER
EAK0289J61C	KIT – MONITOR 24” W/ HDMI (MTG SCREWS IN KIT)
1-39506A	SCREW – PHM, M8 X 16MM (MTG CLAMP HOLDER TO KIOSK)
EAC0129J41A	CLAMP HOLDER, LOWER
1-64209A	SCREW – BHC, M12 X 25MM (MTG TOWER TO BASE)
EAC0090J82A	WHEEL CHOCK RUBBER
5403	INSTALLATION REGISTRATION CERTIFICATE
EAL0392J89A	LABEL - CUSTOMER SERVICE JBC
EAK0320J26A	KIT – AC400, FRONT SHIPMENT, PAIR
EAK0305J60A	KIT – AC400, REAR SHIPMENT, PAIR
EAK0320J99A	KIT - V3300 DECALS
EAK0334J03A	KIT-GEO GEOLINER 770 DECALS
TEEWA552B0	INSTALLATION INSTRUCTIONS
ZEEW A552B	OPERATOR'S MANUAL
EAA0469J60A	ARM – RH ASM, CAM/TAR, FF
EAA0469J61A	ARM – LH ASM, CAM/CAM, FF
EAA0469J33A	KIOSK ASM – JBC
EAA0469J50A	COLUMN – V3300
EAA0469J77A	FULL ASM-V3300 ELECT. SHELF
3-82226A	SOFTWARE LICENSE-MITCHELL1
EAK0320J98B	KIT, DOCKING
1-05737A	NUT-KEPS,M8 (ATTACH CLAMP HANGERS TO KIOSK)
1-2541	WASHER-FLAT,5/16” (ATTACH CLAMP HANGERS TO KIOSK)

TEEWA552B3 - V3300 - GEOLINER 770 SPARE PARTS

KIOSK
 EAA0429J68A - JBC
 EAA0429J74A - HOFMANN



EAK0320J98B - KIT DOCKING PADS (OPTIONAL)
 EAC0116J57A PAD
 1-27184A DRIVE ANCHOR, 1/4"X1" LG

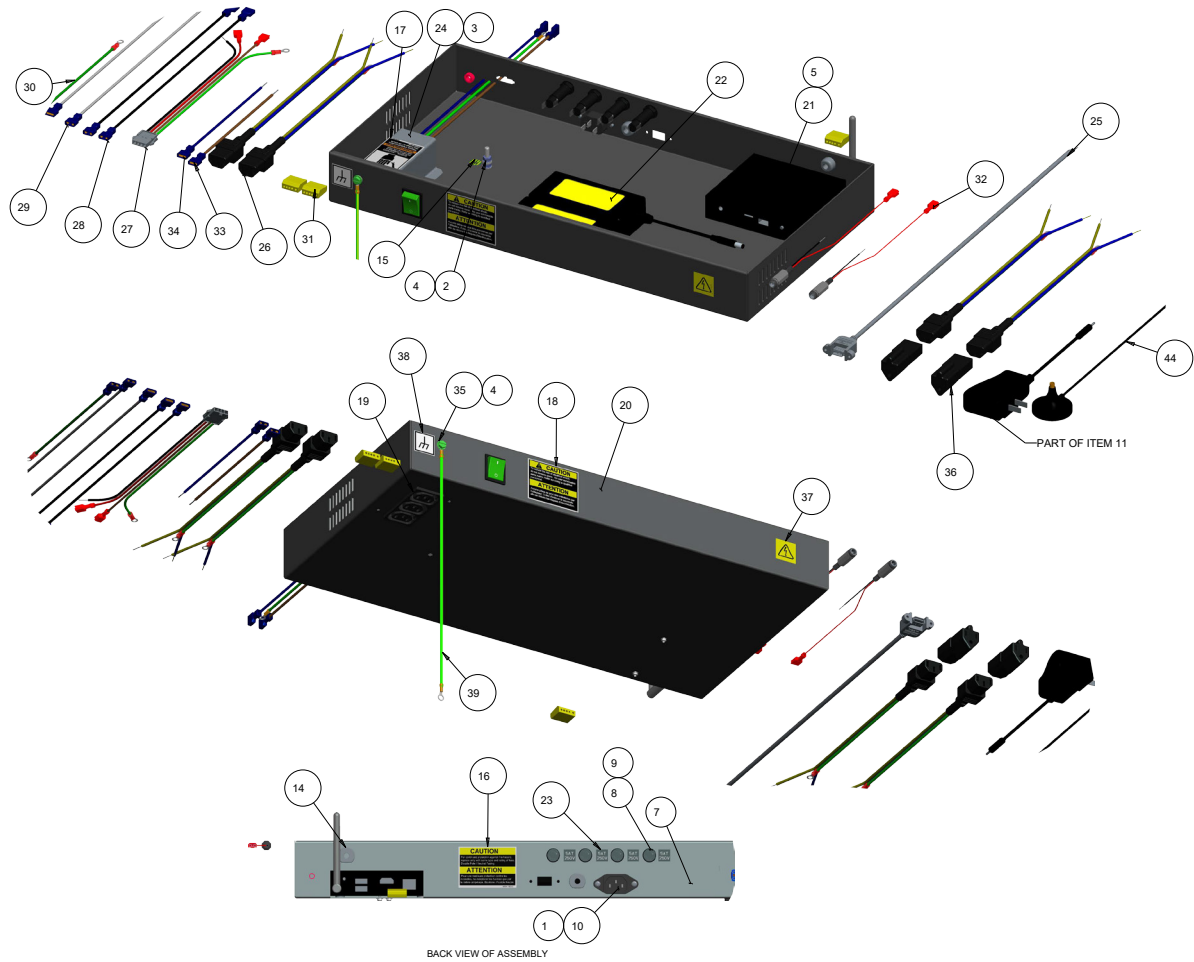
TEEWA552B3 - V3300 - GEOLINER 770 SPARE PARTS

SYM	REQ	PART NO	DESCRIPTION
1	1	1-03382A	CLAMP METAL, 1/2
2	4	1-05637A	NUT-ESNA,M5
3	2	1-11103	M3 X 10MM FLAT HEAD SCREW
4	2	1-11233	NUT - HEX, M3 DIN 934
5	1	1-12624A	SCREW - THREAD FORMING, M4X.07,
6	1	1-14076A	HOLE PLUG- 3/16" DIA, BLK
7	2	1-15158A	RIVET, STEEL 4.8MM
8	8	1-15244A	WASHER-FLAT, M5,NYLON
9	8	1-17358	RIVET, ALUMINUM 4MM
10	2	1-25306A	PHMS, M5 X 20MM
11	28	1-2541	WASHER, FLAT 5/16
12	28	1-32501A	MSCR,HEX HD-M8X16MM
13	2	1-36109A2	SCR-SKT BTN HD CAP-BLK (M5 X 10MM)
14	12	1-65109A	SCREW-BTN HD CAP,M4X8MM
15	8	1-55501A	SCREW, HEX 5/16"-12X1" SELF DRILL
16	2	1-5665	BUSHING - SHOULDER
17	2	8-04842A	MAGNET,12MM X 15MM X 3MM
18	2	8-06488A	SLIDE-DRAWER
19	1	8-10216A	BUSHING - UNIVERSAL,
20	2	8-33939A	CASTOR-SWIVEL, 5" SWIVEL
21	2	8-33939B	CASTER-, 5" SWIVEL
22	1	111243	LABEL-WARNING EXPLOSION
23	1	00111245000	LABEL CAUTION ELECTRICAL
24	1	EAA0429J86A	KIOSK DOOR- JBC RED
		EAA0429J87A	KIOSK DOOR-HOF BLUE
25	1	EAA0420J85A	PRINTER DRAWER ASM
26	1	EAA0420J92A	KIOSK BASE ASM
27	1	EAA0420J93A	CABINET/KIOSK BRACKET-RH
		EAA0429J23A	CABINET/KIOSK BRACKET-RH,HOF
28	1	EAA0420J94A	CABINET/KIOSK BRACKET-LH
		EAA0429J24A	CABINET/KIOSK BRACKET-LH,HOF
29	1	EAA0420J98A	CLAMP TOWER ASM- RH
		EAA0429J27A	CLAMP TOWER ASM- RH,HOF
30	1	EAA0420J99A	CLAMP TOWER ASM- LH
		EAA0429J28A	CLAMP TOWER ASM- LH,HOF
31	1	EAA0429J72A	KIOSK BOX ASM- JBC RED
		EAA0429J73A	KIOSK BOX ASM- HOF BLUE
32	4	EAC0116J56A	CAP,CORNER TRIM
33	2	EAC0121V05A	DOOR TRIM, FRONT
34	2	EAC0121V09A	INSERT,PRINTER DOOR
35	2	EAC0123J01A	CORNER TRIM-KIOSK
36	1	EAL0392J18A	LABEL-PATENT ALIGNMENT
37	1	EAL0392J89A	LABEL-CUSTOMER SERVICE JBC
38	1	EAS2171J81A	POWER SHELF SLIDE-RH
39	1	EAS2171J82A	POWER SHELF SLIDE-LH
40	1	EAS2171J86A	COVER-V3300 KIOSK

TEEW/A552B3 - V3300 - GEOLINER 770 SPARE PARTS

ELECTRICAL SHELF

EAA0429J06A



BACK VIEW OF ASSEMBLY

TEEWA552B3 - V3300 - GEOLINER 770 SPARE PARTS

SYM	REQ	PART NO	DESCRIPTION
1	2	1-12224A	SCREW - THREAD FORMING, M3X0.5
2	2	1-13633A	NUT-BARB,EXT.WASHER,M5
3	2	1-15033	NUT-KEPS, M3 - .5
4	6	1-3347	LOCKWASHER, INTERNAL TOOTH
5	2	1-38606A	SCREW - PHM M3 X 6MM W LOCK WASHER
7	1	2-14258A	ROCKER SWITCH, ILLUMINATED, GREEN
8	4	2-15651A	FUSE HOLDER
9	4	2-18451A	FUSE - 5A SLOW BLOW
10	1	2-64448A	IEC 320-C14 AC RECEPTACLE
11	1	EAK0350J78A	KIT-V3300 USB
12	2	5-14426A	VELCRO LOOP-LAPTOP ADAPTOR
13	2	5-14526A	VELCRO HOOK-LAPTOP ADAPTOR
14	2	8-09819A	STRAIN RELIEF ROUND CABLE
15	1	8-23762A	LABEL - EARTH SYMBOL
16	1	86164	LABEL-WARNING, FUSE RATING
17	1	86465	LABEL-WARNING, SHOCK HAZARD
18	1	00111245000	LABEL CAUTION ELECTRICAL
19	1	EAA0416V65A	IEC POWER BLOCK, 3 WAY
20	1	EAA0429J07A	ELECT. BOX ASM- V3300
21	1	EAK0350J67A	HOST CONTROLLER ASM
22	2	EAE0049J84A	POWER SUPPLY - ALIGNER
23	4	EAL0345P51A	LABEL FUSE 5 A
24	1	EAS2105J96B	COVER - OUTLET
25	1	EAW0235J91A	USB CABLE
26	4	EAW0290J16A	CORD-POWER,V3300 POWER SHELF
27	1	EAW0290J17A	CABLE ASM- ALIGNER POWER,
28	2	EAW0290J18A	LINK WIRE-11 IN, BLK,16 AWG
29	2	EAW0290J19A	LINK WIRE-11 IN, WHITE, 16 AWG
30	1	EAW0290J20A	GRND WIRE-6 IN, GR/YL,16 AWG
31	3	2-10346B	WIRE CONNECTOR-5WIRE,12-22 AWG
32	2	EAW0290J22A	CABLE ASM - DC BARREL (MALE)
33	1	EAW0290J23A	LINK WIRE-6 IN, BROWN, 16 AWG
34	1	EAW0290J24A	LINK WIRE-6IN, BLUE,16 AWG
35	1	1-21484A	GROUNDING SCREW 10-32X1/2"
36	2	2-78266A	RECPT, NEMA 5-15 TO IEC
37	1	EAL0345P54A	ELECTRICAL WARNING LABEL
38	1	EAL0392J19A	LABEL-GROUND
39	1	EAW0235J36A	CABLE ASSY- GROUND, 12"
41	4	4500-0029	TIE CABLE (BLACK)
42	2	5-06945A	CABLE - TIE MOUNT - 4 WAY
43	2	2-31001A	TERMINAL - QUICK CONNECT
44	1	2-78566A	BASE-ANTENNA, MAGNETIC

TEEW/AS52B3 - V3300 - GEOLINER 770 SPARE PARTS

LEFT HAND CAMERA ARM

EAA0429J90A



TEEWA552B3 - V3300 - GEOLINER 770 SPARE PARTS

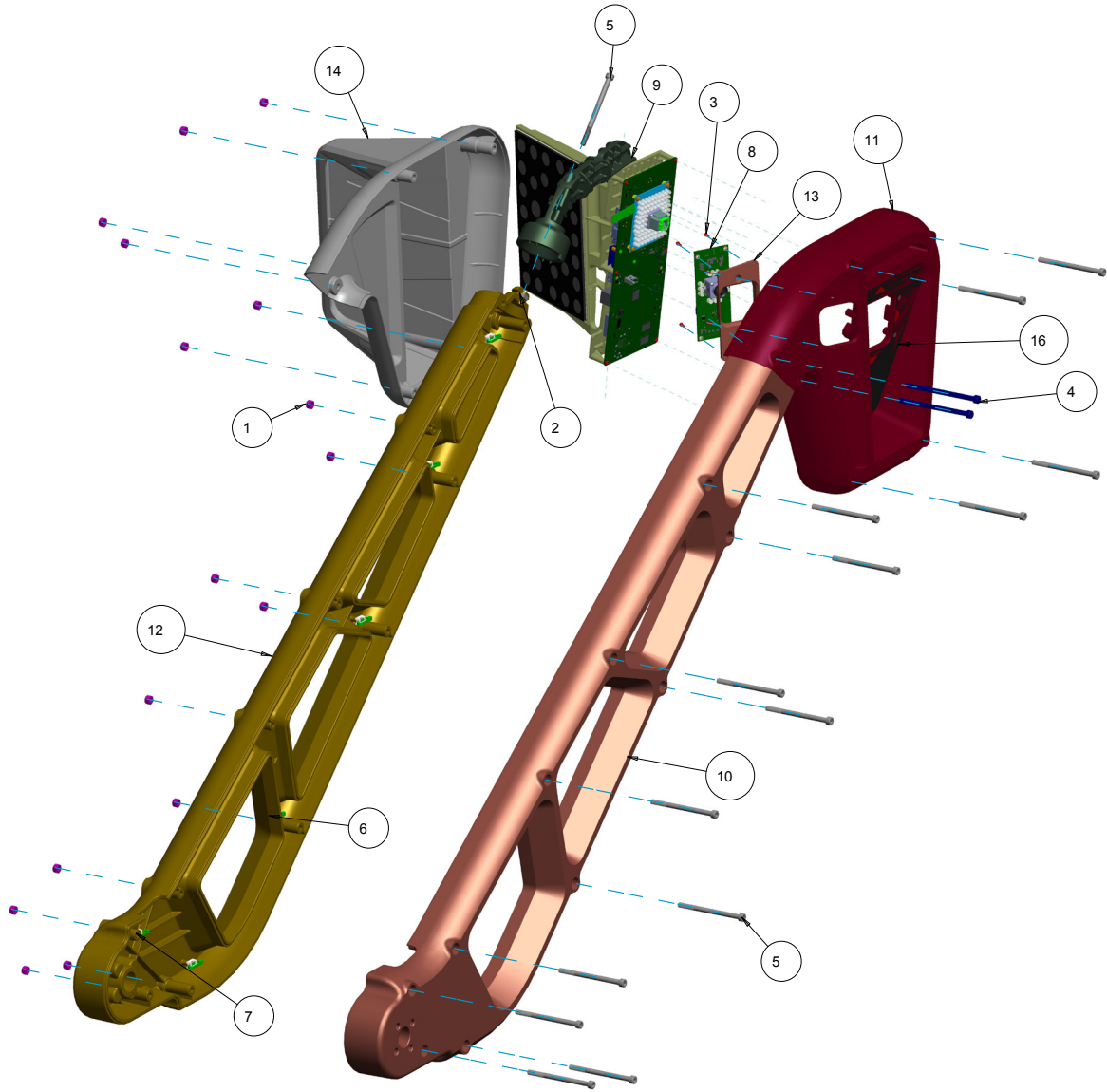
SYM	REQ	PART NO	DESCRIPTION
1	16	1-04937A	NUT - M6, NYLON LOCK
2	1	1-05037A	NUT - M6, SQUARE
3	6	1-16523	PHMS M2.9X9.5MM, SELF TAP
4	2	1-21604A	SCREW - M6 X 100MM, SHC
5	15	1-21704A	SCREW - M6 X 90MM SHC
6	6	5-07745A	HOLDER - CABLE TIE
7	6	5-845	CABLE TIE
8	1	EAA0420J87A	CAL CAM ASM LH FF
9	1	EAC0116J83A	COVER - FT LH, CAMCAM
10	1	EAC0116J85A	COVER - LH BACK, CAMCAM FF
11	1	EAC0116J86A	TRUSS ARM - PIVOT, FRONT FF
12	1	EAC0116J90A	TRUSS ARM - PIVOT, REAR FF
13	1	EAL0452J32A	DECAL - CAMERA, LH, FF
14	1	EAW0290J10A	CABLE ASM - MOTOR/CAMERA
15	1	EAW0290J27A	CABLE - ETHERNET, CAT 6
NS	1	EAK0350J28A	KIT - WIFI DONGLE AND CABLE"

TEEW/A552B3 - V3300 - GEOLINER 770 SPARE PARTS

SYM	REQ	PART NO	DESCRIPTION
1	3	1-03907A	SCREW-PHM, M3X4MM,NYLOK
2	3	1-04737A	NUT - LOCK, M3
3	1	1-1548	WASHER-EXT,SHAKEPROOF 6MM
4	1	1-16209	SCREW HEX SOCKET HEAD CUP M6X12
5	1	1-18441A	WASHER-#10
6	4	1-21404A	SCREW - PHM, M2.5 X 8MM
7	13	1-21904A	SCREW - PHM, M2.5 X 6MM, LOCKING
8	4	1-29384A	STANDOFF - M2.5 X 20MM
9	3	1-30584A	STANDOFF-HEX, M3X5MM LG
10	1	EAK0334J29A	FSK-CALIBRATED V3300 CAL CAM
11	1	EAK0350J65A	KIT - CORTEX ASSEMBLY (WIRELESS)
12	1	EAC0116J82A	SKELETON - COMMON
13	1	EAC0116J92A	BRACKET - CAMCAM, FF
14	1	EAP0280J74A	STROBE 80 LEDS
15	1	EAW0290J13A	CABLE - MAIN TO CAL/COLOR
NS	1	EAK0350J28A	KIT - WIFI DONGLE AND CABLE

TEEW/A552B3 - V3300 - GEOLINER 770 SPARE PARTS

RIGHT HAND CAMERA ARM



TEEWA552B3 - V3300 - GEOLINER 770 SPARE PARTS

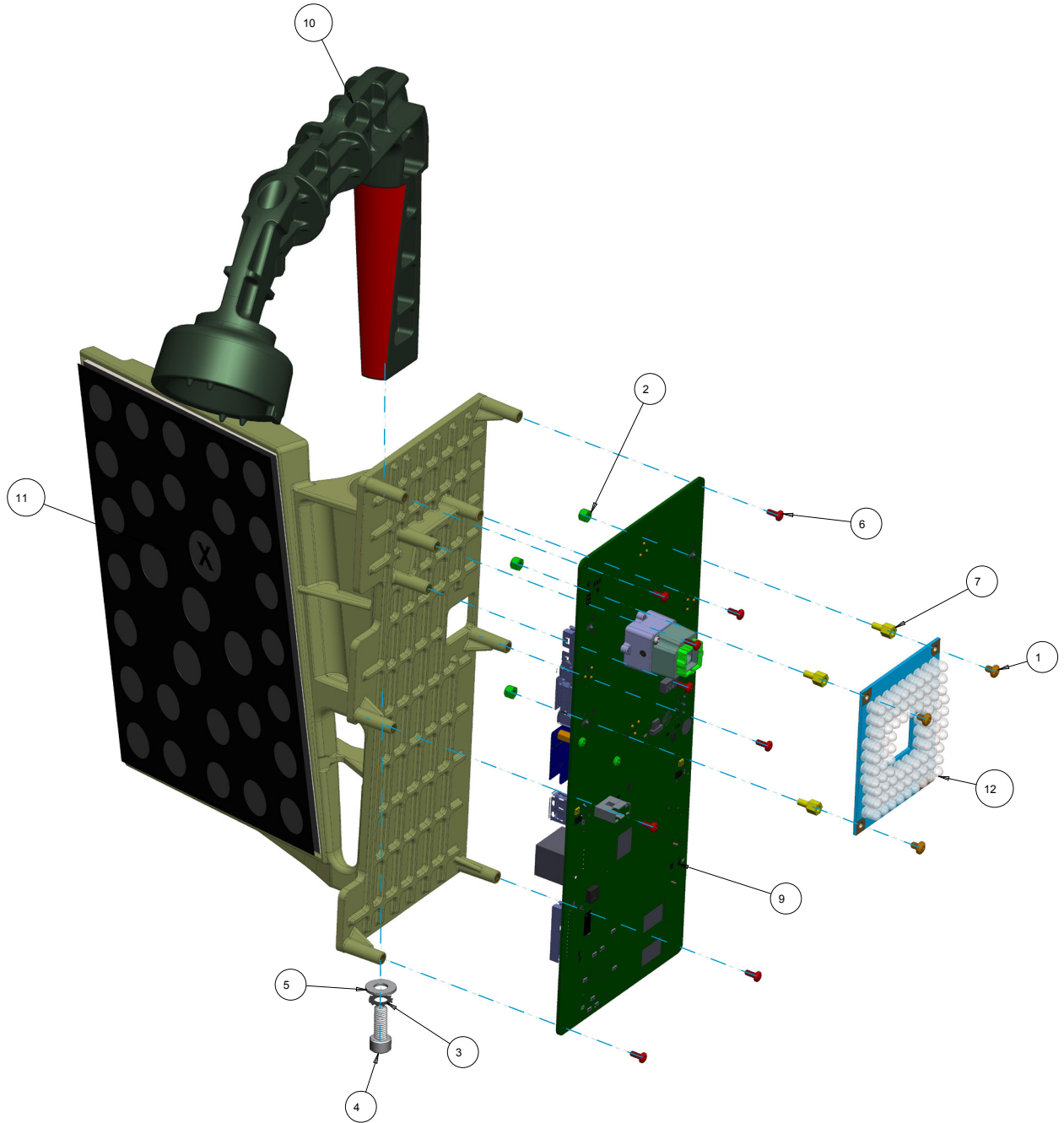
SYM	REQD	PART NO	DESCRIPTION
1	16	1-04937A	NUT - M6, NYLON LOCK
2	1	1-05037A	NUT - M6, SQUARE
3	12	1-21504A	SCREW - M2.5 X 8MM SELF TAP
4	2	1-21604A	SCREW - M6 X 100MM, SHC
5	15	1-21704A	SCREW - M6 X 90MM SHC
6	6	5-07745A	HOLDER - CABLE TIE
7	6	5-845	CABLE TIE
8	1	EAA0420J54A	CAMERA - COLOR AID
9	1	EAK0350J65A	KIT - CORTEX ASSEMBLY (WIRELESS)
		EAK0334J24A	FSK-CAM/TAR BRACKET W/6X8 TARGETX
10	1	EAC0116J86A	TRUSS ARM - PIVOT, FRONT FF
11	1	EAC0116J87A	COVER - FT RH,CAMTAR
12	1	EAC0116J90A	TRUSS ARM - PIVOT, REAR FF
13	1	EAC0123J02A	BRACKET - DRIVE ON, CAMERA
14	1	EAC0123J13A	COVER - RH BACK, CAMTAR FF
16	1	EAL0452J33A	DECAL - CAMERA, RH, FF
17	1	EAW0290J10A	CABLE ASM - MOTOR/CAMERA
18	1	EAW0290J27A	CABLE-ETHERNET,CAT 6
NS	1	EAK0350J28A	KIT - WIFI DONGLE AND CABLE

TEEW/A552B3 - V3300 - GEOLINER 770 SPARE PARTS

CAM-TAR

EAA0420J88A - NA

EAA0429J40A- EU



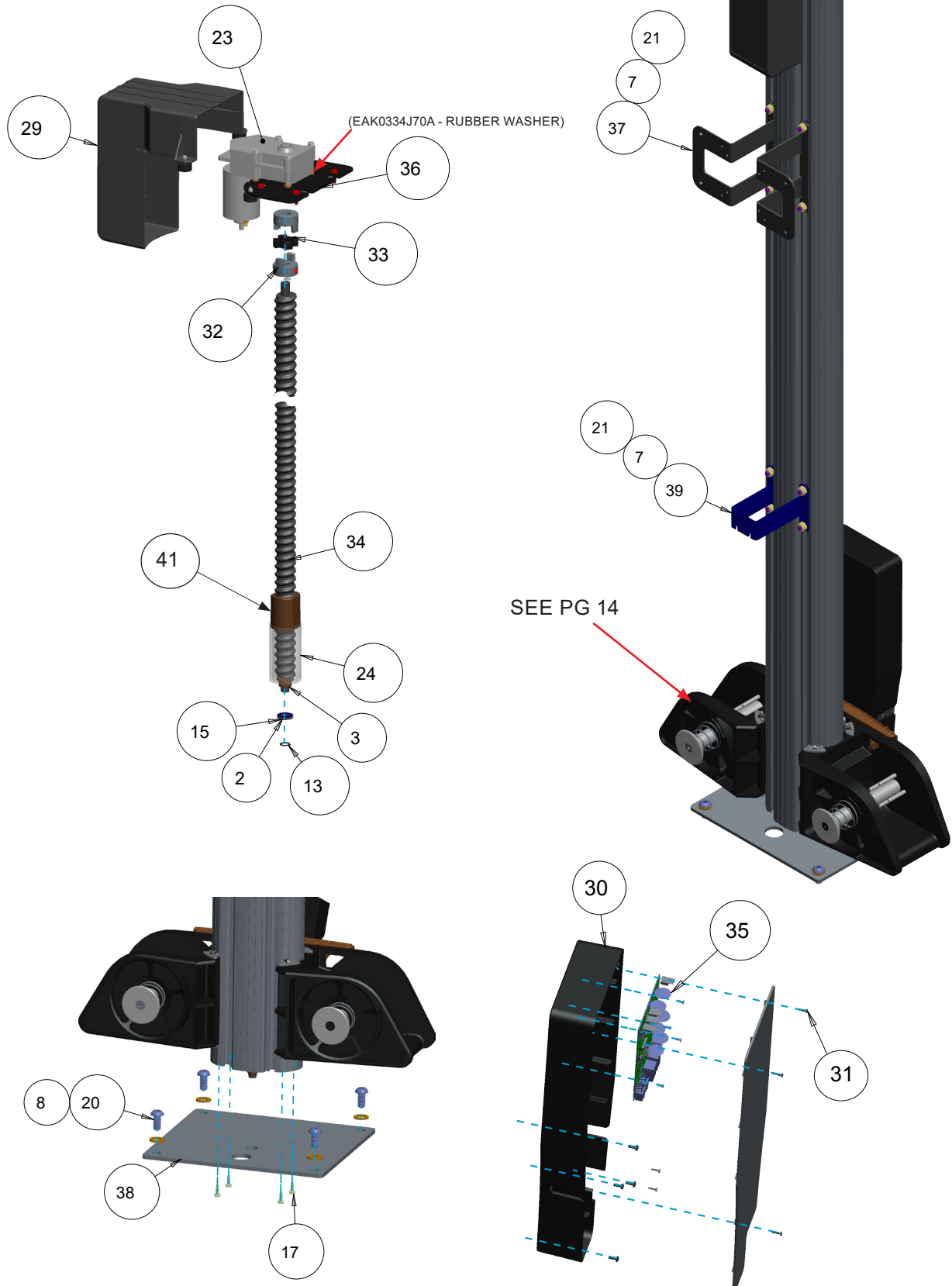
TEEWA552B3 - V3300 - GEOLINER 770 SPARE PARTS

SYM	REQ	PART NO	DESCRIPTION
1	3	1-03907A	SCREW-PHM, M3X4MM,NYLOK
2	3	1-04737A	NUT - LOCK, M3
3	1	1-1548	WASHER - M6, LOCK, EXT
4	1	1-16209	SCREW - SHC, M6 X 16MM
5	1	1-18441A	WASHER-#10
6	9	1-21904A	SCREW - PHM, M2.5 X 6MM, LOCKING
7	3	1-30584A	STANDOFF-HEX, M3X5MM LG
8	1	EAK0334J24A	TARGET SANDWICH, 6X8, "X"
9	1	EAK0350J65A	KIT – CORTEX ASSEMBLY (WIRELESS)
10	1	EAC0116J82A	SKELETON - COMMON
11	1	EAK0334J24A	FSK-CAM/TAR BRACKET W/6X8 TARGET
12	1	EAP0280J74A	STROBE 80 LEDS
13	1	EAW0290J13A	CABLE - MAIN TO CAL/COLOR
NS	1	EAK0350J28A	KIT - WIFI DONGLE AND CABLE

TEEW/A552B3 - V3300 - GEOLINER 770 SPARE PARTS

TOWER

EAA0429J04A



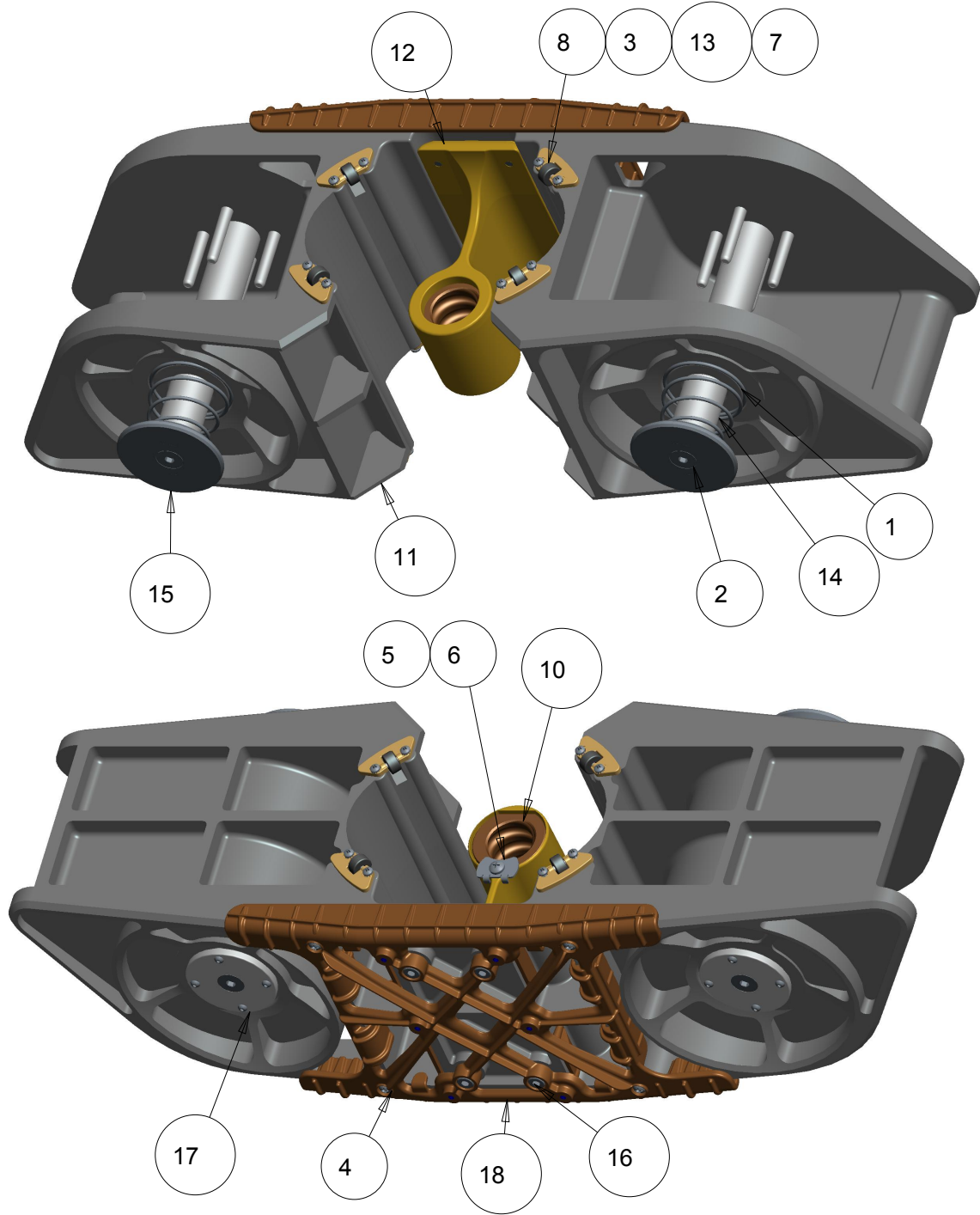
TEEWA52B3 - V3300 - GEOLINER 770 SPARE PARTS

SYM	REQ	PART NO	DESCRIPTION
1	4	1-01537A	NUT - LOCK, M3
2	1	1-09163A	BEARING - NEEDLE, THRUST
3	1	SEE ITEM 34	BUSHING - OILITE, 1/2", FLANGE
4	2	1-107	MSCR-PHIL RND HD (6-32 X .375)
5	2	1-11308A	WELD NUT-TAB, LOW PROFILE,#6-32
6	4	1-13204A2	SCREW - PHM, M4 X 10MM X 12MM
7	8	1-1337	NUT - ESNA, 5/16 -18
8	4	1-13641	WASHER - FLAT (12MM), BLK
9	8	1-15144A	WASHER - CUSHIONING, #10
10	2	1-16341A	WASHER - FLAT (3MM), 9MM OD
11	4	1-16523	SCREW-PHMS,M2.9X 9.5MM,SELF TAP,TYPE B
12	2	1-16726A	SCREW-THREAD CUTTING, (PLASTIC),#4-24 X 3/8"
13	1	SEE ITEM 34	RETAIN RING - 1/2 DIA. BEARING
14	3	1-23223A	SCREW-PHMS,M2.9 X 1 X 13MM,TYPE B
15	2	SEE ITEM 34	WASHER - THRUST 1/2"
16	4	1-37306A	SCREW - PHM, M3 X 16MM
17	8	1-48701A	SCREW-HHW, #10-24 X 5/8,
18	4	1-49410A	SCREW-SET, FLAT PT 1/4-20 X 1/4
19	4	1-64009A	SCREW, SHCS 10-24 X 2
20	4	1-64209A	SCR-BTN HD SOCKET, M12 X 25MM
21	8	1-705A	BOLT-CARRIAGE 5/16-18 X 3/4
22	4	1-7733	LOCK NUT-10-24 X .375
23	1	EAK0334J21A	FSK-3300 MOTOR / MOTOR PLATE
		• 1	MOTOR
		• 2	MOTOR MOUNT-V3300
		• 4	SCREW-SHCS #10-24 X 2"
		• 4	LOCKNUT- #10-24 X 0.375"
		• 8	WASHER-CUSHIONING, #10 (EAK0334J70A SET OF 8)
		• 2	RUBBER FOOT
		• 2	NUT-LOCKING,M3
		• 2	SCREW-PHM,M3 X 16MM
		• 2	COUPLING-HUB,1/2" SHAFT (ITEM 32)
		• 1	CUSHION-COUPLING (ITEM 33)
		• 4	SCREW-SET,FLAT PT 1/4"-20 X 1/4"
24	1	SEE ITEM 34	TUBING - PVC
25	4	8-08018A	RUBBER FOOT
26	1	EAA0429J03A	SLIDE CAR ALIGNER
27	1	EAA0429J05A	TRACK - POWER
28	1	EAC0116J60A	EXTRUSION, COLUMN
29	1	EAC0116J68A	MOTOR COVER
30	1	EAC0116J98A	MCB MOUNT
31	1	EAC0116J99A	MCB BACK COVER
32	2	EAK0334J20A	FSK-V3300 MOTOR COUPLING (COUPLING - HUB, 1/2" SHAFT)
33	1	EAK0334J20A	FSK-V3300 MOTOR COUPLING (CUSHION - COUPLING)
34	1	EAK0334J19A	FSK V3300 LEAD SCREW
		• 1	LEAD SCREW
		• 1	BUSHING-OILITE, 1/2", FLANGE
		• 1	RETAINING RING-1/2" DIA. BEARING
		• 2	WASHER-THRUST 1/2"
		• 1	TUBING-PVC
		• 2	COUPLING-HUB,1/2" SHAFT
		• 1	CUSHION-COUPLING
		• 1	NUT-LEAD SCREW
		• 1	8-03629A LUBRICANT-SUPER LUBE,3OZ TUBE
35	1	EAP0280J90A	MOTOR CONTROL BOARD
36	1	EAS2146J88A	PLATE - TOP
37	2	EAS2146J91A	BRACKET - MONITOR, SPLIT
38	1	EAS2171J52A	ALIGNER/BASE MOUNTING PLATE
39	1	EAS2171J57A	SUPPORT BRACKET- TOWER, V3300
40	1	EAS2171J66A	PLATE- CABLE TRACK
41	1	SEE ITEM 34	NUT-LEAD SCREW

TEEW/AS52B3 - V3300 - GEOLINER 770 SPARE PARTS

SLIDE CAR

EAA0429J03A



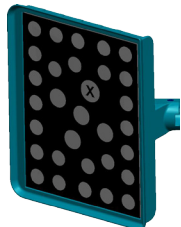
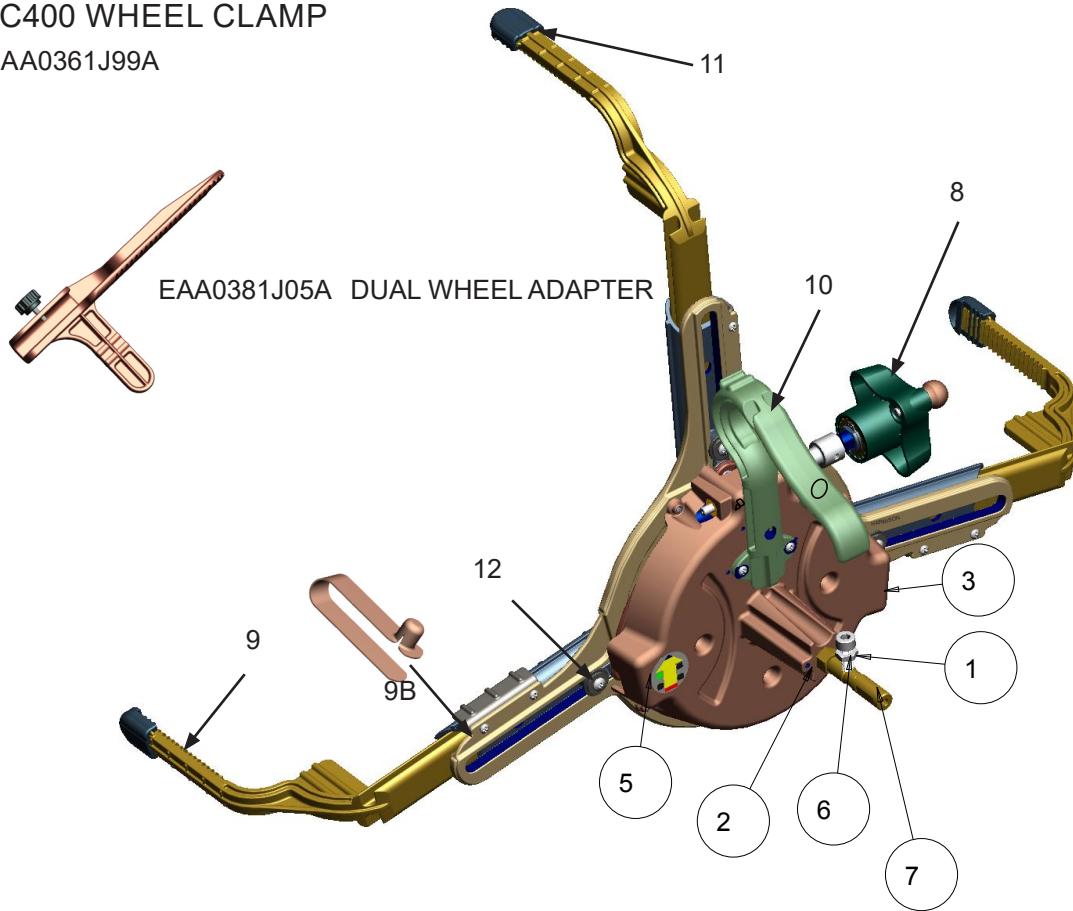
TEEWA552B3 - V3300 - GEOLINER 770 SPARE PARTS

SYM	REQ	PART NO	DESCRIPTION
1	2	SEE ITEM 14	SPRING - CONICAL
2	4	SEE ITEM 14	FHCS - M8 X 1.25, 20MM
3	16	SEE ITEM 8	MSCR-PH PAN HD,M3X8MM W/LK WASHER
4	4	1-07424A	SCREW-PHH SLFTG-BLK(8-18X1/2)
5	1	1-32806A	SCREW - PHMS #10-24 X 3/8
6	1	EAS2171J59A	KEEPER - LEAD SCREW
7	8	SEE ITEM 8	BRACKET - ROLLER, V3300
8	1	EAK0334J22A	FSK-V3300 SLIDE CAR ROLLERS
		• 8	BRACKET-ROLLER,V3300
		• 8	ROLLER
		• 12	SCREW-PHM,M3X8,LK WASHER
		• 8	SHAFT-ROLLER
10	1	EAA0429J96A	NUT & LEAD SCREW
11	1	EAC0116J96A	SLIDE CAR - V3300
12	1	EAC0116J97A	ARM - LEAD SCREW
13	8	SEE ITEM 8	SHAFT - ROLLER
14	1	EAK0334J23A	FSK-V3300 LOCKING PINS
		• 4	FHCS - M8 X 1.25, 20MM
		• 2	SPRING - CONICAL
		• 2	DISC - ARM PIVOT
		• 2	LOCKING PIN ASM
		• 2	SHAFT - PIVOT
		• 1	SYNTHEIC GREASE
15	2	SEE ITEM 14	DISC - ARM PIVOT
16	4	1-64709A	SCREW-SKT HD LOW PROFILE,
17	2	SEE ITEM 14	LOCKING PIN ASM
18	1	EAC0123J10A	SKELETON- REINFORCING

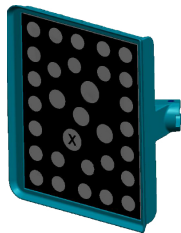
TEEW/A552B3 - V3300 - GEOLINER 770 SPARE PARTS

AC400 WHEEL CLAMP

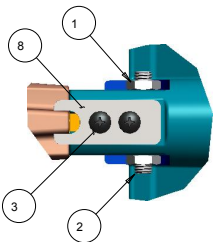
EAA0361J99A



PART NUMBER DESCRIPTION
EAK0305J65A XD TARGET ASM, REAR



PART NUMBER DESCRIPTION
EAA0395J13B XD TARGET ASM, FRONT
EAM0088J15A* BUSHING - AC400, SP



SYM	REQ	PART NO	DESCRIPTION
1	2	1-20733A	NUT - JAM, M8
2	2	1-54810A	SCREW - SET. M8 X 20mm, CONE PT
3	2	1-16006A	SCREW - PHM, M5 X 12mm
8	1	EAS2146J24A	PLATE - ANIT ROTATION, AC400

TEEWA552B3 - V3300 - GEOLINER 770 SPARE PARTS

SYM	REQD	PART NO	DESCRIPTION
1	1	1-20733A	NUT - JAM, M8
2	2	1-62609A	SCREW - SHC, #6-32 X 1/2
3	1	EAA0361J99A	DNH - LEFT CLAMP ASM. DNH - RIGHT CLAMP ASM.
4	1	EAA0381J34A	XD TARGET ASM - FRONT
5	1	EAL0415J09A	DECAL - LEFT FRONT, INDICATOR
		EAL0415J10A	DECAL LEFT REAR
		EAL0415J11A	DECAL RIGHT REAR
		EAL0415J12A	DECAL RIGHT FRONT
6	1	EAM0007J19A	SCREW - SHC, M8 SPECIAL
7	1	EAM0088J15A	BUSHING - AC400, SP
8		EAA0381J12A	KIT - KNOB SERVICE
9		EAA0381J13A	BRACKET PAW - SVC KIT
9B		1-25752A	QUICK RELEASE BUTTON
10		EAC0105J78A	HANDLE
11		EAC0105J93A	AC400 BUMPER TIGER PAW (RUBBER TIP ONLY)
12		EAK0320J22A	PLASTIC WASHER REPAIR KIT (TSB WA-1185-1)

NOTE: There are NO Service items other than what is listed in this parts reference. At no time should a wheel clamp be disassembled in the field for repair.

ACCESSORIES

EAK0305J50A	KIT DUAL WHEEL ADAPTER (6)
EAA0381J05A	DUAL WHEEL ADAPTER (1)
EAK0222J83B	WHEELS OFF ADAPTER KIT

NOTE: Each kit below contains (4) clamps & (4) targets for a complete aligner

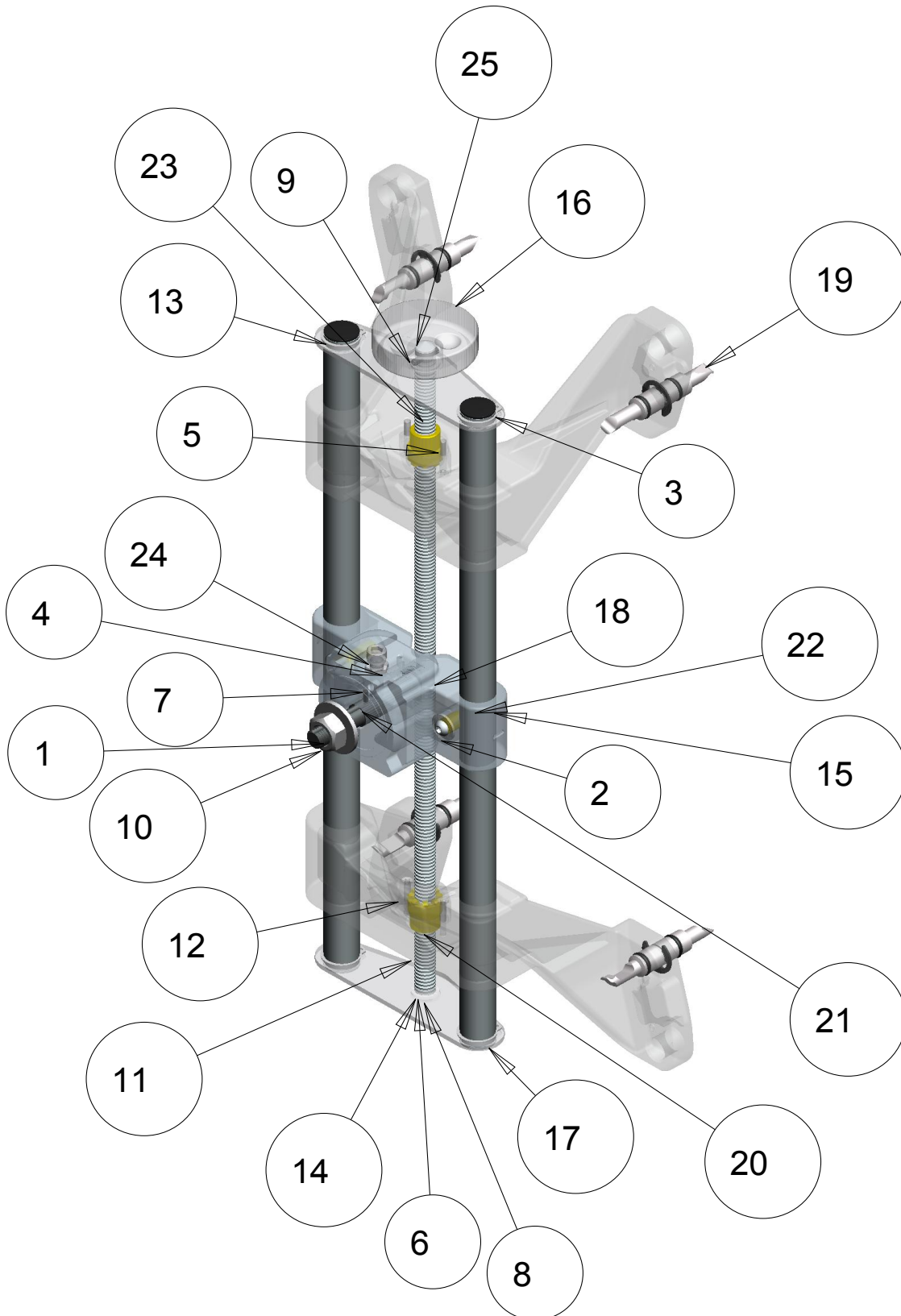
OPTIONAL CLAMP/TARGET KITS	
CLAMP	VALID FOR V3300
AC100	EAK0320J36A
AC200	EAK0320J34A
AC400	EAK0320J35A

TEEM/A552B3 - V3300 - GEOLINER 770 SPARE PARTS

AC100 / AC200 WHEEL CLAMP

EAK0268J56A - WHEEL CLAMP LONG (NA) AC200

EAK0268J78A - WHEEL CLAMP SHORT (EURO) AC100



TEEWA552B3 - V3300 - GEOLINER 770 SPARE PARTS

SYM	REQ	PART NO	DESCRIPTION
1	1	1-1041	WASHER - FLAT, 1/2
2	3	1-14144A	WASHER-FLAT, M6
3	8	1-17677A	RETAINING RING
4	1	1-20733A	NUT - JAM, M8
5	4	1-28103A	MSCR, PH FLH M4 X 25MM
6	1	1-3447	M6 LOCKWASHER, INTERNAL TOOTH
7	1	1-37410	SCREW-SET M3 X .5 X 10MM, CUP PT.
8	3	1-50309A	SCREW-BHCS M6X10MM
9	1	1-6152	PIN-STRAIGHT SLOTTED M4 X 20MM
10	1	1-933	NUT-HEX, 1/2-13
11	2	EAC0079J48A	BRACKET-LONG WHEEL CLAMP (FRONT)
12	2	EAC0079J50A	COVER-FEED SCREW LOCK
13	2	EAC0079J51A	PLUG - PLASTIC, 19MM HOLE
14	2	EAC0079J52A	WASHER-THRUST PLASTIC PLASTIC, 19MM HOLE
15	1	EAC0079J53A	CENTER SLIDE BRACKET
16	1	EAM0044J13A	KNOB HAND WHEEL
17	2	EAM0044J14A	TUBE-WHEEL CLAMP LONG (NA)
		EAM0044J64A	TUBE-WHEEL CLAMP SHORT (EURO)
18	1	EAM0044J16A	SCREW-DOUBLE LEAD LONG (NA)
	1	EAM0044J65A	SCREW-DOUBLE LEAD SHORT (EURO)
19	4	EAM0044J19C	GRABBER ASM SINGLE END
	4	EAM0044J19A	GRABBER ASM DUAL END
20	1	EAM0044J20A	BUSHING-THREADED BRASS RH
21	1	EAM0044J21A	CENTER STATIONARY
22	2	EAM0044J22A	PIN-TUBE LOCK
23	1	EAM0044J24A	BUSHING THREADED BRASS LH
		EAM0044J20A	BUSHING THREADED BRASS RH
24	1	EAM0044J47A	SCREW - SHCS M8X30 FULL THD
25	2	EAS2084J29A	PLATE-RETAINER

PART NUMBER	DESCRIPTION
1-08584A	CORD – BUNGEE, BLACK 16"
EAK0268J41D	GRABBER KIT, SINGLE END
EAK0268J41B	GRABBER KIT – DUAL END
EAC0105J35A	COVER-RUBBER, V3D

TEEW/A552B3 - V3300 - GEOLINER 770 SPARE PARTS

BLANK PAGE

TEEWA552B3 - V3300 - GEOLINER 770 SPARE PARTS

BLANK PAGE

Snap-on
309 Exchange Ave.
Conway, AR 72032
501-450-1500