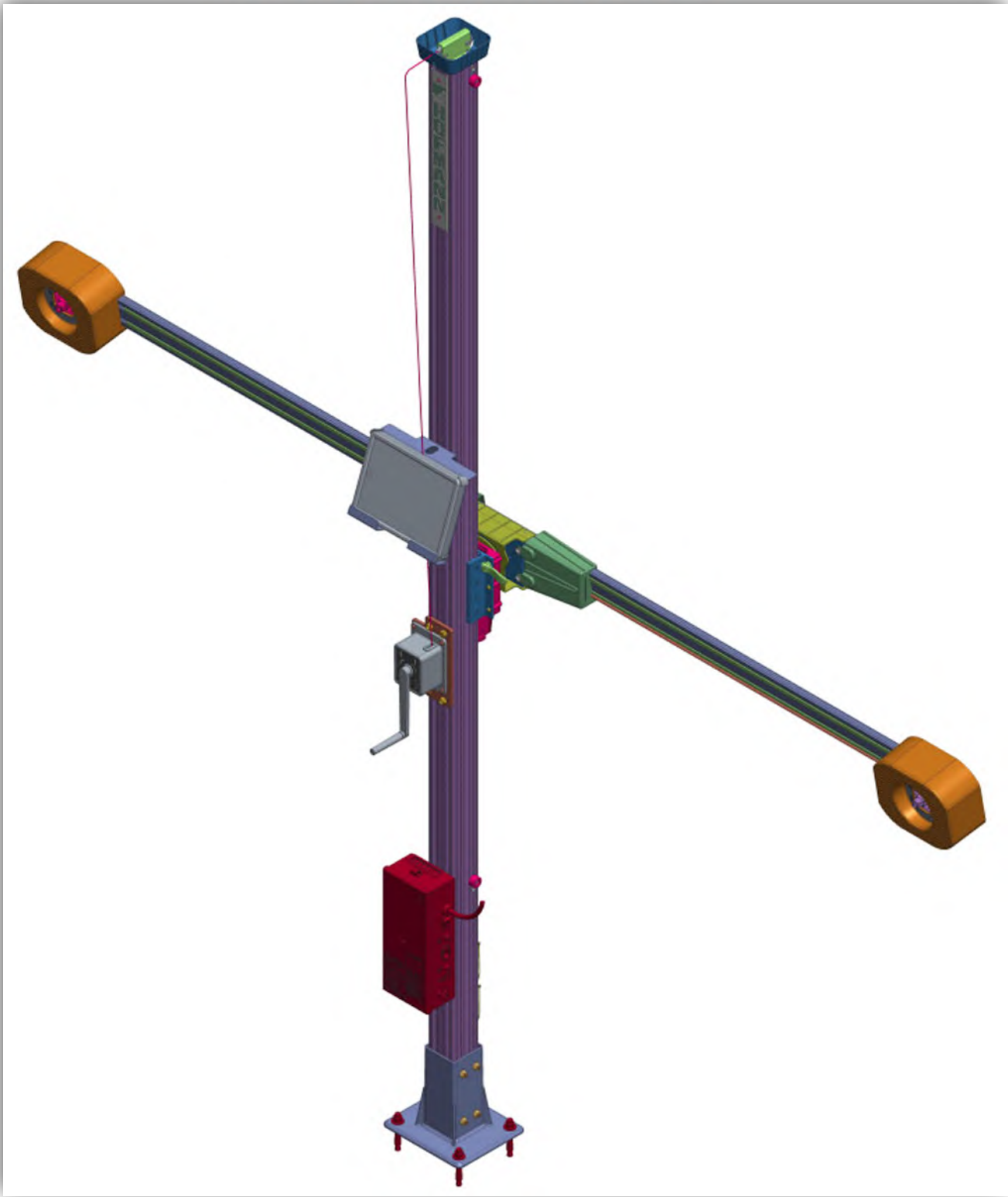


PARTS MANUAL



MODEL EEWA741TH3

All information contained or disclosed in this document is considered confidential and proprietary by Snap-on. All manufacturing, use, reproduction, and sales rights are reserved by Snap-on and the information contained herein shall not be used in whole or in part without the express written consent of Snap-on.

Table of Contents

BOM – COMPLETE, EEWA741TH3	5
CAD ASSEMBLY COMPLETE (EAA0533J21B).....	6
POST ASSEMBLY (EAA0533J18B).....	7
BEAM ASSEMBLY (EAA0533J19B).....	8 & 9
ASSY – POST, BRAKE (EAA0531J21A).....	10
SUP POWER ASM (EAA0483J21A).....	11-13
WHEEL CLAMP / TARGET (LF, RF, LR, RR).....	14
WHEEL CLAMP (EAA0446J79A).....	15-16
ACCESSORIES.....	17

* INDICATES RECOMMENDED SERVICE PARTS

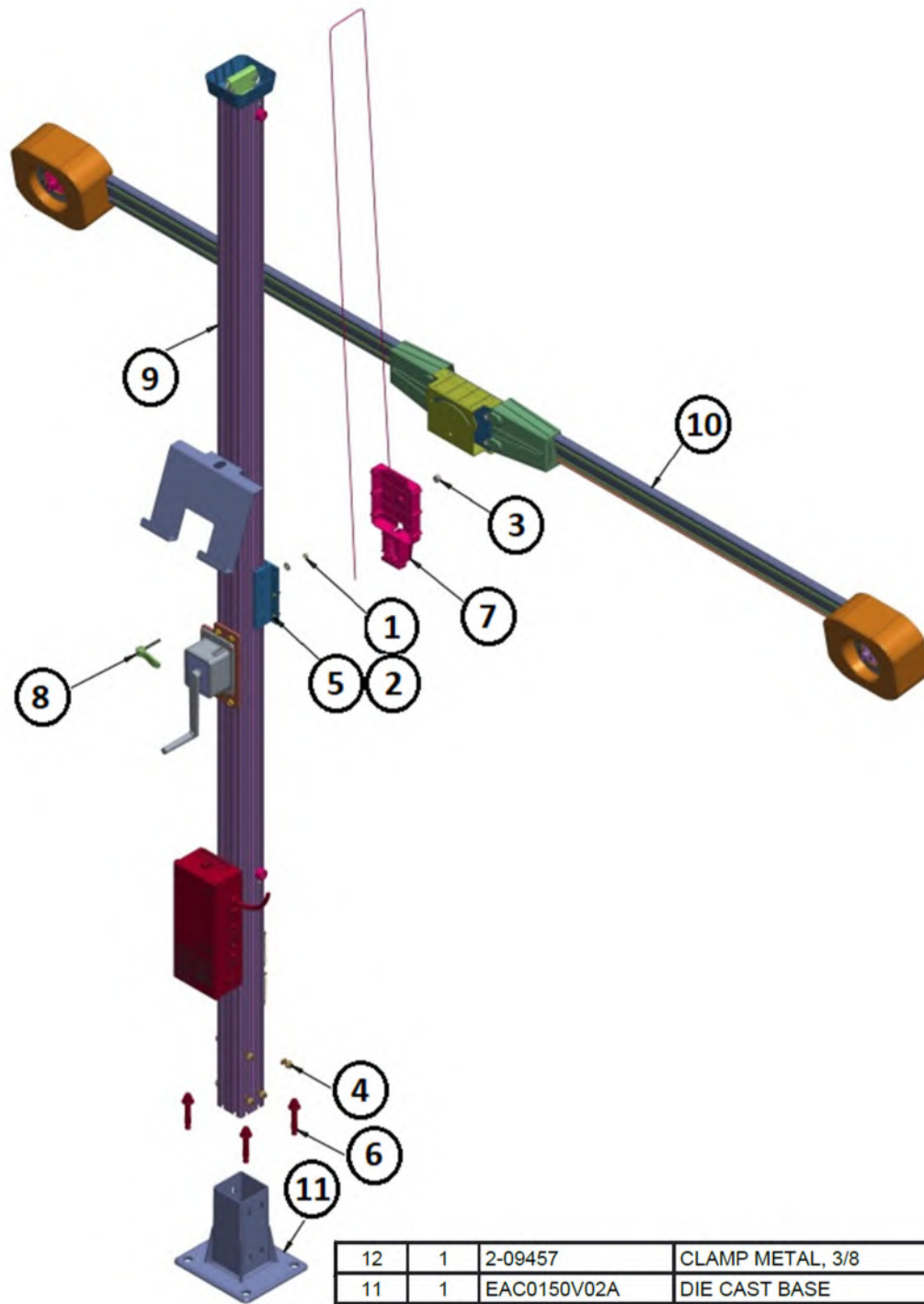
THE DATA, DRAWINGS, AND INFORMATION CONTAINED IN THIS DOCUMENT IS CONFIDENTIAL AND THE SOLE PROPERTY OF SNAP-ON, AND MAY NOT BE REPRODUCED, USED, OR DISCLOSED WITHOUT WRITTEN PERMISSION OF AN OFFICER OF SNAP-ON.

COPYRIGHT
2011

EEWA741TH3
SHEET 1 OF 1

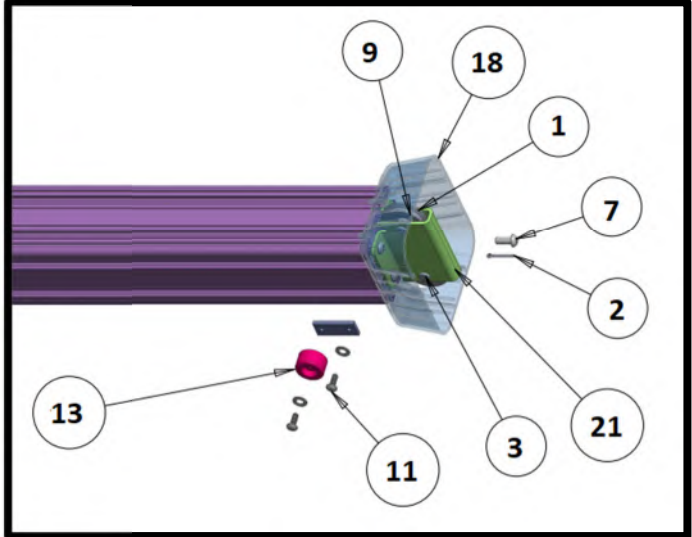
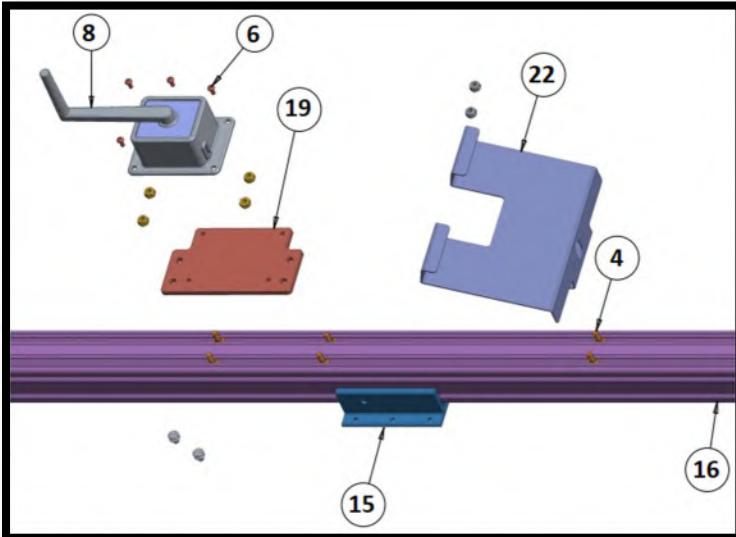
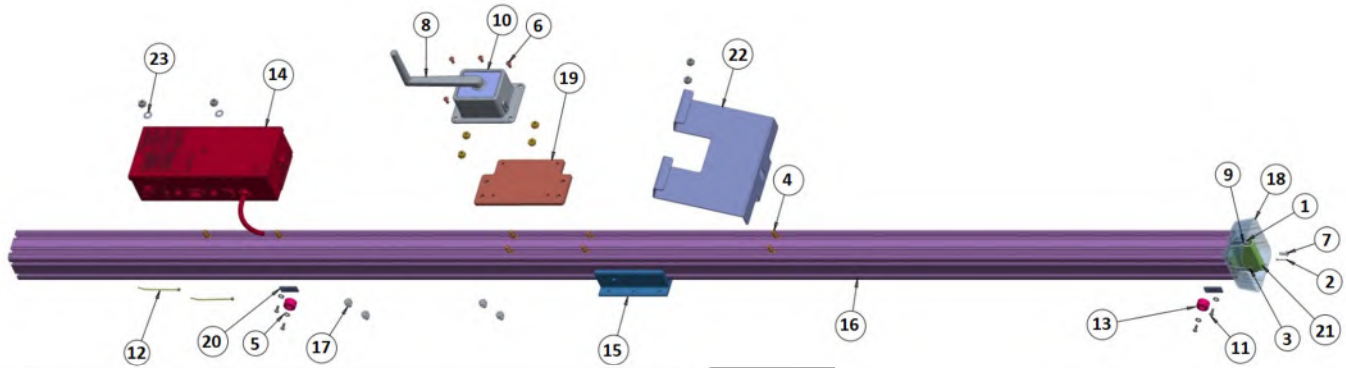
SYM	REQD	ITEM	PART NUMBER	DESCRIPTION
	1	1	EAA0533V21B	ASSY., LCADD, COMPLETE
	1	2	EAK0363J83A	KIT, SHIPPING, LCADD
	1	3	EAA0531J25A	ASSY., HOFFMANN BRANDING
	1	4	EAK0350J80A	KIT, CLAMP/TGT, AC200 II - XD
	1	5	88931	POWER CORD, 115V
	1	6	55502	STEERING WHEEL CLAMP
	1	7	00096	BRAKE DEPRESSOR
	1	8	5403	INSTALLATION REGISTRY CERTIFICATE
	2	9	EAC0090J82A	WHEEL CHOCK, RUBBER
	1	10	EAL0343J76A	SERIAL/ELECTICAL LABEL
	1	11	TEEWA741	INSTALL INSTRUCTION
	1	12*	ED-18003	POST PRODUCTION ALIGNMENT AUDIT
	1	13	3-23706D1	I-Pad
	2	14	EAE0078J14A	WIFI DONGLE
	1	15	ZEEWA741	OPERATOR MANUAL
	1	16	1-14785B	PROTECTIVE COVER, IPAD
	1	17	3-26606A	USB SPLITTER
	1	18	4-01880A	Level vial
	1	19	EAL0484J58A	DECAL, WINCH CRANK DIRECTION
	2	20	EAA0446J76B	ASSY., HANGER, KIOSK, AC200 II

EAA0533V21B: CAD ASSEMBLY, COMPLETE

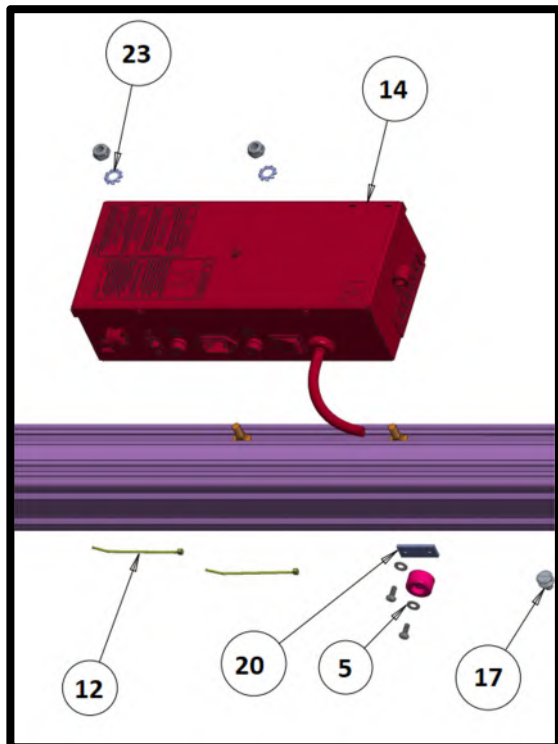


12	1	2-09457	CLAMP METAL, 3/8
11	1	EAC0150V02A	DIE CAST BASE
10	1	EAA0533V19B	BEAM ASM
9	1	EAA0533V18B	POST ASSEMBLY
8	1	EAA0531J23A	CAM LEVER - PIVOT
7	1	EAA0531J22A	ASSY, JOINT
6	4	8-02440A	STUD ANCHOR BOLT, 1/2 X 3.75"
5	5	1-44888A	SCREW M6x16 ISO 7380
4	8	1-39706B	SCREW-T,M8 BLACK
3	1	1-32633A	NUT, 3/8-16, NYLOCK
2	1	1-16641A	WASHER - FLAT (6mm)
1	1	1-01637B	NUT-ESNA,M6 BLACK ZINC
SYM	REQD	PART NO	DESCRIPTION

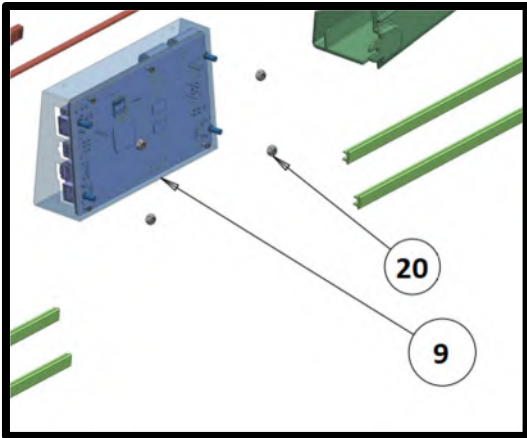
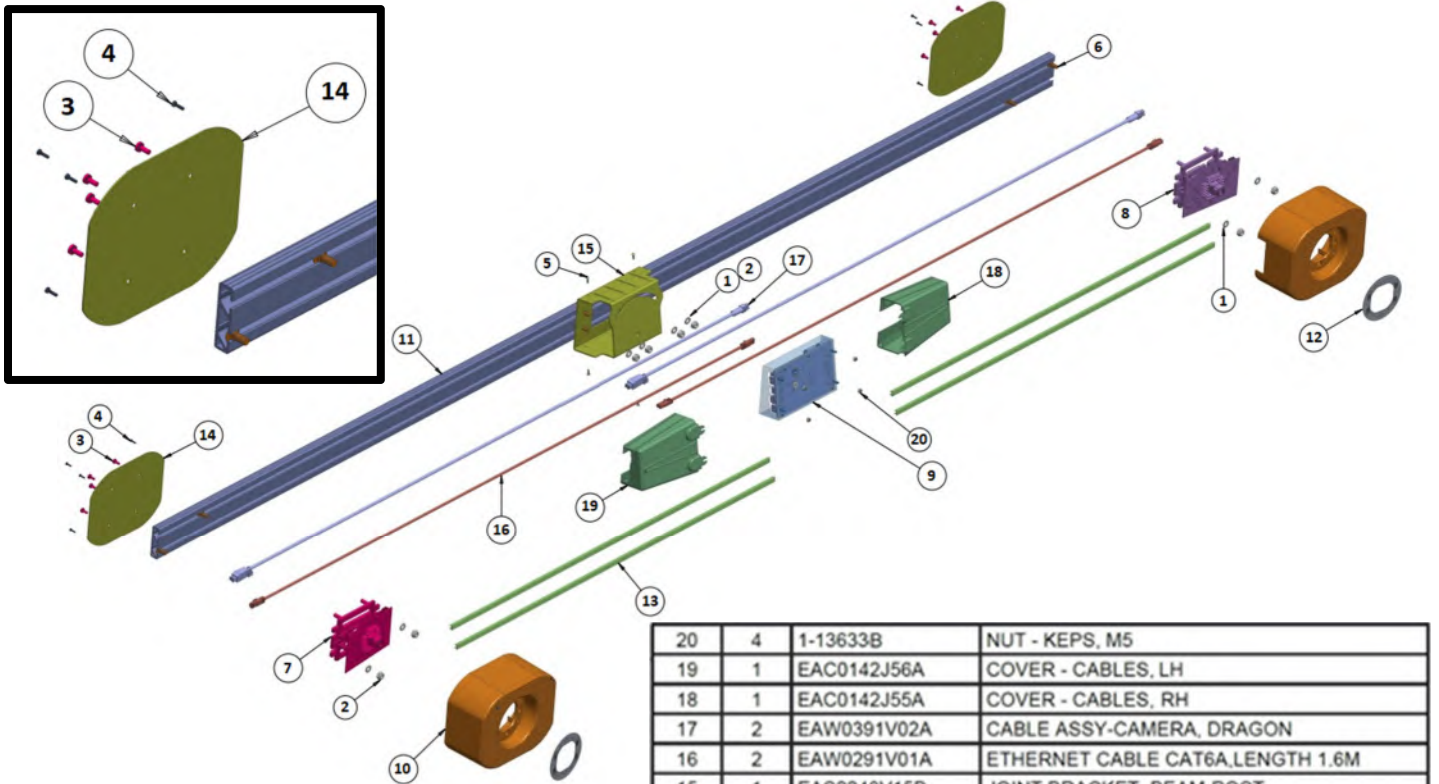
EAA0533V18B: POST ASSEMBLY



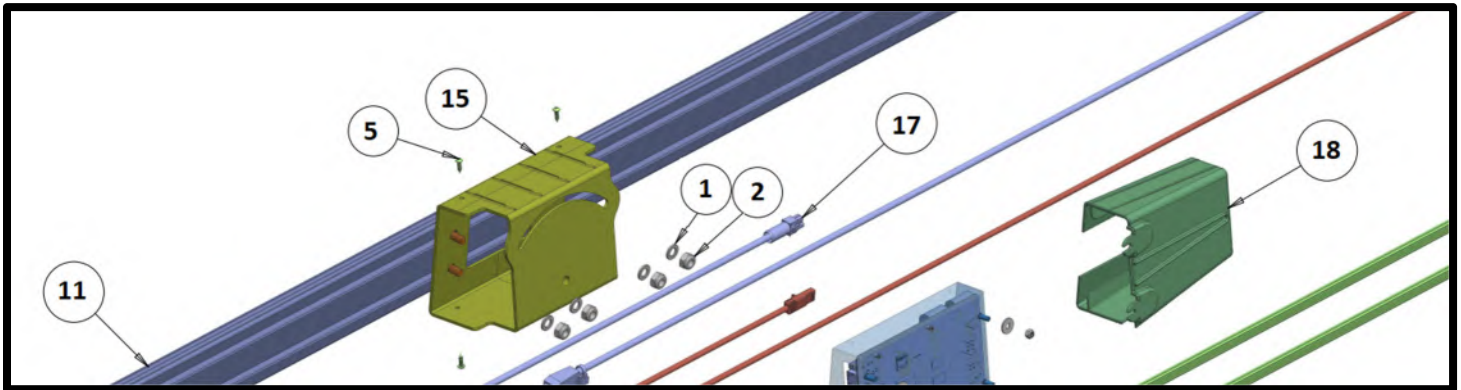
23	2	13148	EXTERNAL-TOOTH WASHER
22	1	EAS2248V22A	IPAD HOLDER
21	1	EAS2248V18A	PULLEY SUPPORT
20	4	EAS2072J84A	PLATE - STRAIN RELIEF
19	1	EAC0150V23A	WINCH ADAPTER
18	1	EAC0150V18A	POST CAP
17	4	EAC0129J80A	TAB - SLIDE, TOWER
16	1	EAC0090J90B	TOWER - EXTRUSION
15	1	EAA0533V24A	ASSY, POST SLIDE
14	1	EAA0483J21A	SUP - POW, BEAM
13	4	8-16618A	RUBBER BUMPER
12	8	5-2345	TIE - CABLE 4" LG X .10" WD
11	8	1-7106	SCREW - PMS, #10-24 X 1/2
10	1	EAL0484J58A	DECAL - WINCH CRANK DIRECTION
9	4	1-45788A	NYLON_FLAT_WASHER 1/4"
8	1	1-43784B	WINCH 152-1-2 (45KG)RIGGING
7	4	1-2509	SCREW-BHCS, 1/4 - 20 X 5/8
6	4	1-23988A	SCREW,BHCS,M6x12mm
5	8	1-18741A	WASHER - FLAT
4	8	1-39706B	SCREW - T, M8, BLACK
3	2	1-10287A	CLEVIS PIN DIA 1/4" USABLE LG13/16"
2	2	1-10187A	COTTER PIN 3/32"x3/4"
1	2	1-05384A	PULLEY - CABLE ROUTING
SYM	REQD	PART NO	DESCRIPTION

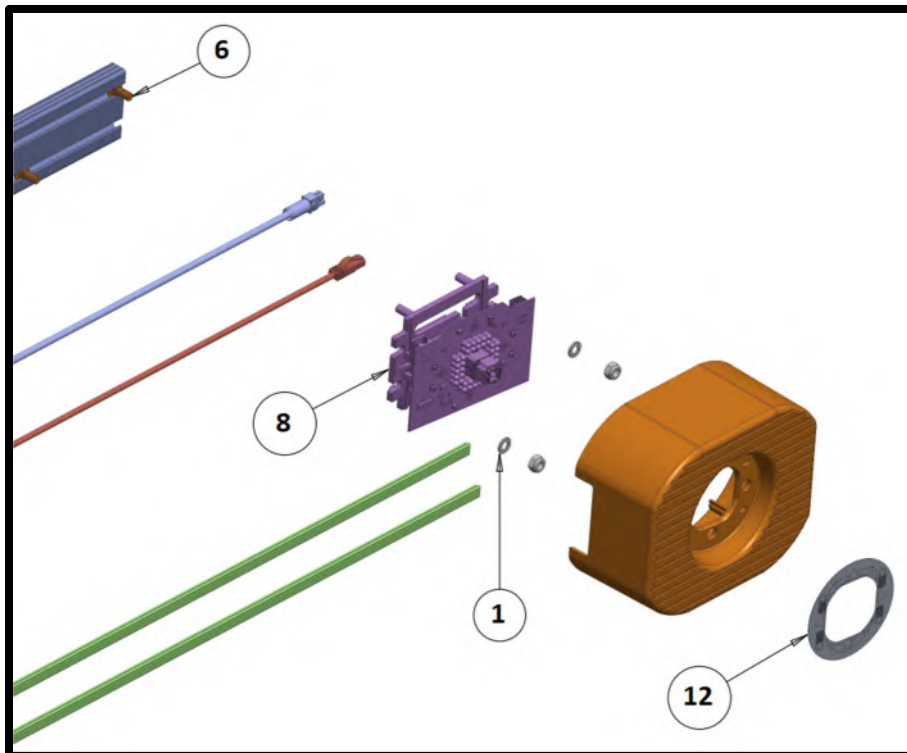
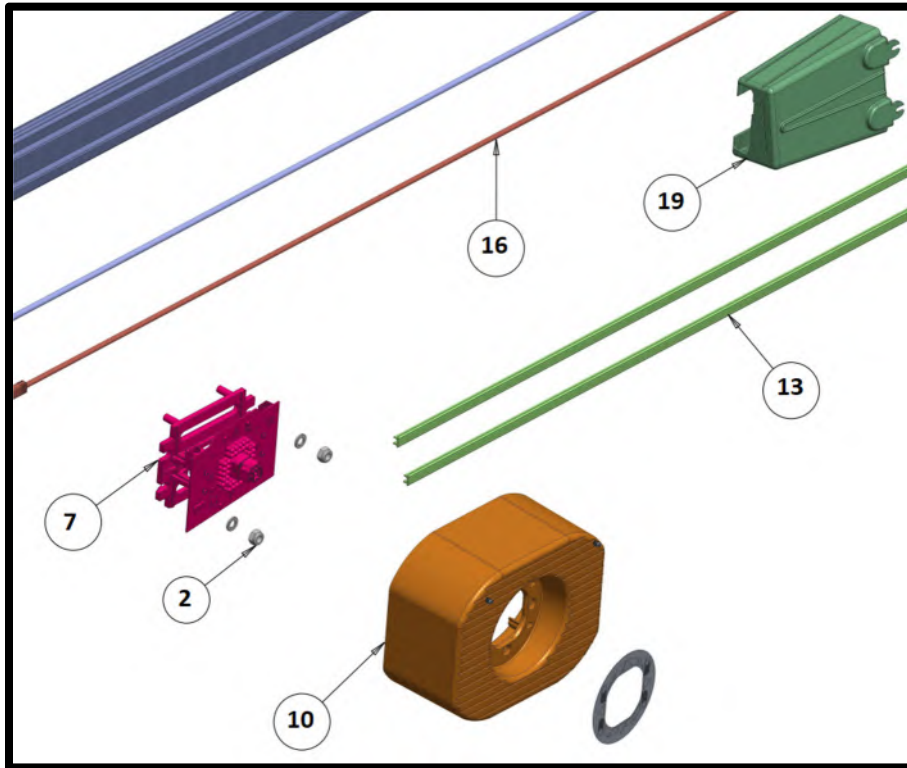


EAA0533V19B: BEAM ASSEMBLY



20	4	1-13633B	NUT - KEPS, M5
19	1	EAC0142J56A	COVER - CABLES, LH
18	1	EAC0142J55A	COVER - CABLES, RH
17	2	EAW0391V02A	CABLE ASSY-CAMERA, DRAGON
16	2	EAW0291V01A	ETHERNET CABLE CAT6A,LENGTH 1.6M
15	1	EAS2248V15B	JOINT BRACKET, BEAM-POST
14	2	EAS2248V05B	DIE CAST CAMERA BACK PLATE
13	4	EAM0023J47D	TRIM - CAM BEAM, BLUE
12	2	EAL0415J16B	VODI - UA2, UHR, BLUE
11	1	EAC0150V08B	CAMERA BEAM
10	2	EAC0150V05A	CAMERA COVER
9	1	EAK0363J95A	KIT - PROCESSOR *
8	1	EAK0363J94A	KIT - RH CAMERA *
7	1	EAK0363J87A	KIT - LH CAMERA *
6	8	1-705A	BOLT-CARRIAGE 5/16-18 X 3/4
5	4	1-45288A	ROUND HEAD SCREW M3.9 X13 DIN 7981
4	8	1-18206	SCREW - PHM W EXT LW , M3 X 12mm
3	8	1-16006A	SCREW, PAN HD M5x12 EXT.
2	8	1-1337	NUT - ESNA, 5/16 -18
1	8	1-10041	WASHER - FLAT, 5/16
SYM	REQD	PART NO	DESCRIPTION

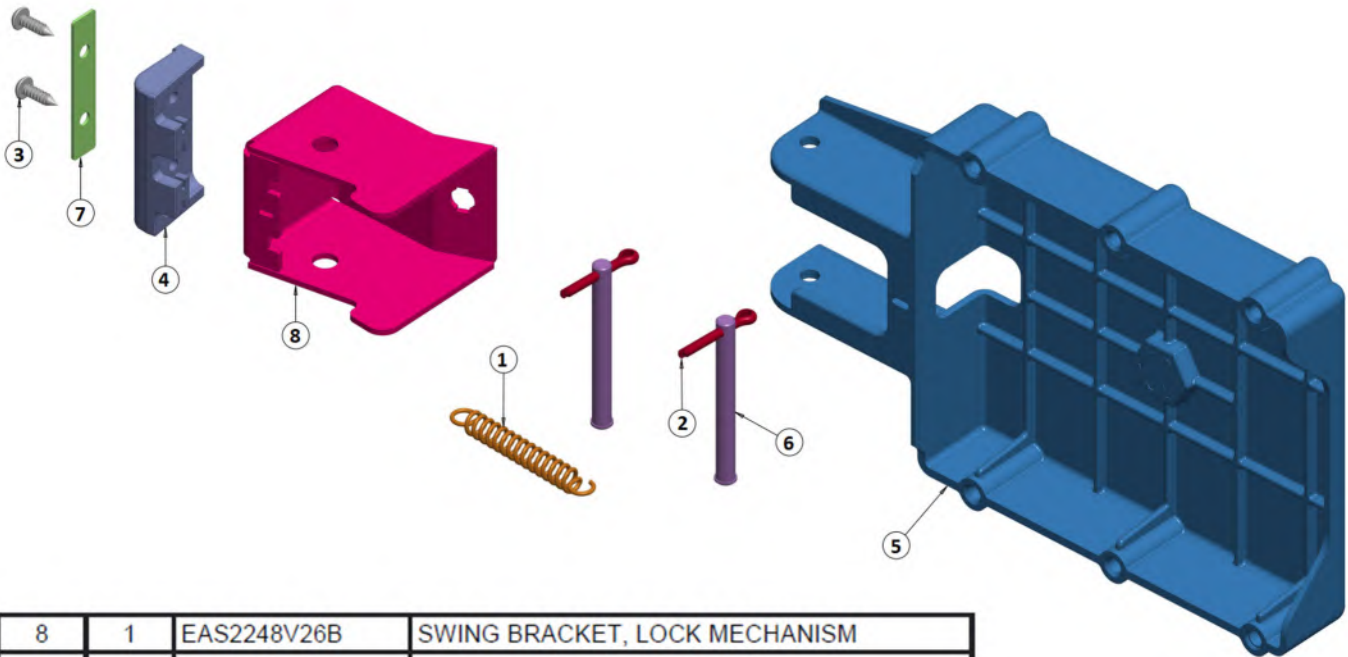




#7 EAK0363J87A: KIT – LH CAMERA *

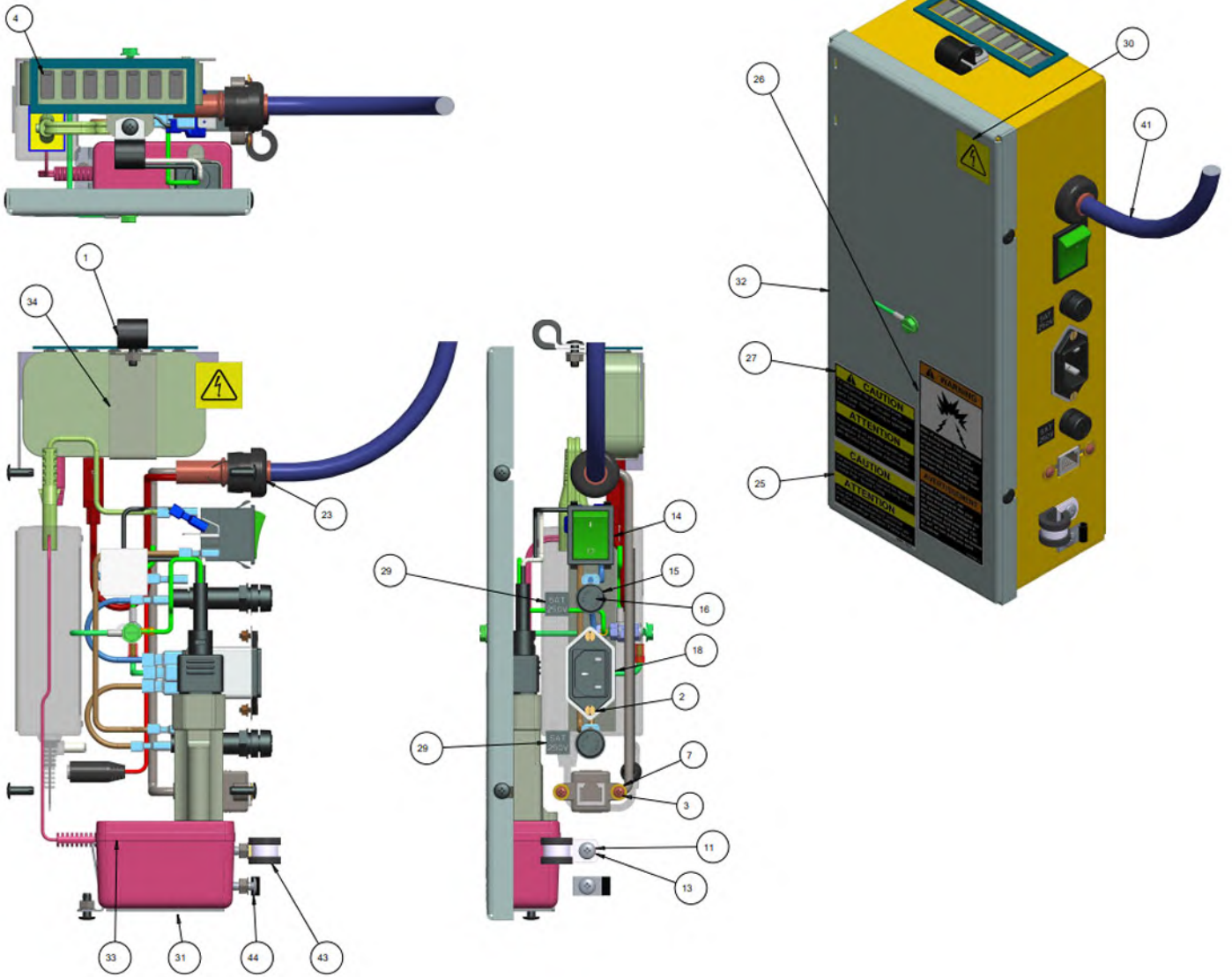
#8 EAK0363J94A: KIT – RH CAMERA *

EAA0531J21A: ASSY – POST, BRAKE

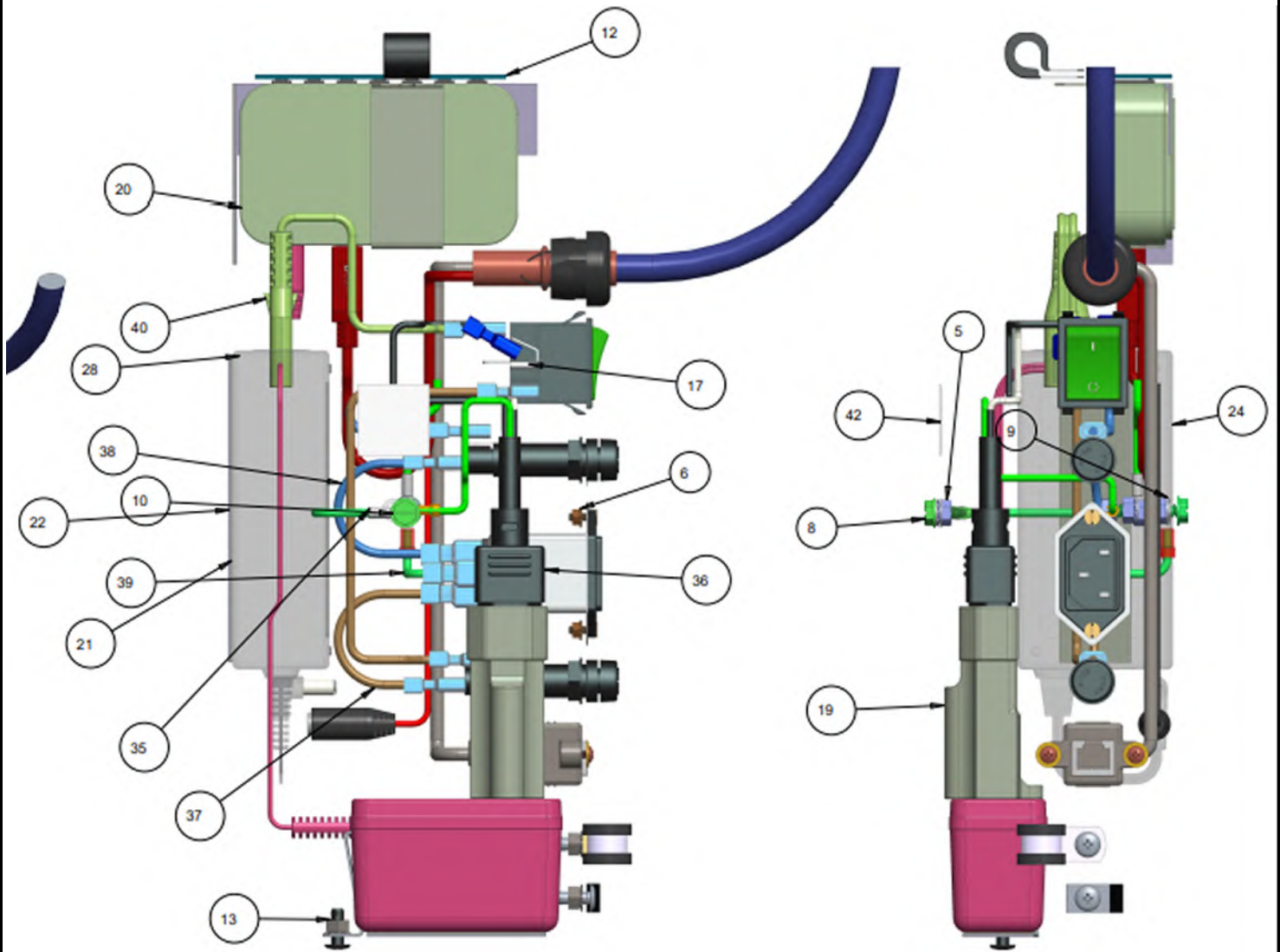


8	1	EAS2248V26B	SWING BRACKET, LOCK MECHANISM
7	1	EAS2248V25A	LOCK PLATE RUBBER BRAKE
6	2	EAM0200V24A	HOLDER PIN, LOCK MECHANISM
5	1	EAC0150V22A	TURNTABLE BRACKET
4	1	EAC0150V19A	RUBBER BRAKE
3	2	1-45288A	ROUND HEAD SCREW M3.9 X13 DIN 7981
2	2	1-10187A	COTTER PIN 3/32"x3/4"
1	1	1-12189A	EXTENSION SPRING
SYM	REQD	PART NO	DESCRIPTION

EAA0483J21A: SUP – POWER, ASM



EAA0483J21A: SUP – POWER, ASM



EAA0483J21A Bill of Material

44	1	1-06282C	METAL CLAMP, 3/16" DIA ID
43	1	1-06282B	CLAMP METAL, 1/4" DIA ID
42	1	EAL0392J19A	LABEL-GROUND
41	1	EAW0290J56A	CABLE - SNAKE
40	1	EAW0290J47A	CORD - POWER, IEC C7, FIGURE 8
39	1	EAW0290J20A	GRND WIRE - 6 IN, GR/YL, 16 AWG
38	2	EAW0243P23A	LINK WIRE, BLUE
37	2	EAW0243P22A	LINK WIRE, BROWN
36	1	EAW0235J74A	CORD - POWER, PC IN BOX
35	1	EAW0235J36A	CABLE ASM - GROUND 12"
34	1	EAS2223J41A	BRACKET-HUB POWER
33	1	EAS2223J40A	BRACKET-USB HUB
32	1	EAS2203J20A	COV - FRONT, POW
31	1	EAS2223J42A	COV - BACK, POW
30	1	EAL0345P54A	ELECTRICAL WARNING LABEL
29	2	EAL0345P51A	LABEL FUSE 5 A
28	1	EAE0049J84C	POWER SUPPLY 19VDC
27	1	111245	LABEL CAUTION ELECTRICAL
26	1	111243	LABEL-WARNING EXPLOSION
25	1	86164	LABEL-WARNING, FUSE RATING
24	1	8-23762A	LABEL - EARTH SYMBOL
23	1	8-10419A	STRAIN RELIEF .88 DIA HOLE
22	4	5-14526A	VELCRO HOOK
21	4	5-14426A	VELCRO LOOP
20	1	3-23106A	USB HUB - 7 PORT, EXT. POWER
19	1	2-78266A	RECPT, NEMA 5-15 TO IEC
18	1	2-37348A	AC RECEPTACLE & LINE FILTER (IEC)
17	2	2-31001A	TERMINAL - QUICK CONNECT
16	2	2-18451A	FUSE - 5A SLOW BLOW
15	2	2-15651A	FUSE HOLDER
14	1	2-14258A	ROCKER SWITCH, ILLUMINATED, GREEN
13	4	1-7733	NUT - KEPS, #10-24
12	1	EAC0129J82A	GASKET - ELECT BOX
11	8	1-62601A	MSCR - RND HD, 10-24 X 1/2 BLK
10	1	1-38984A	SCREW - HHW, GND, #10-32 X 1.0
9	3	1-3347	WASHER - LOCK, M5
8	1	1-21484A	GROUNDING SCREW 10-32x1/2"
7	2	1-16341A	WASHER - FLAT (3mm), 9mm OD
6	2	1-15033	NUT - KEPS, M3
5	5	1-13633A	NUT - KEPS, M5
4	7	2-90666A	COVER- USB,DUST
3	2	1-12224A	SCREW - PHM, M3 X 8mm
2	2	1-11103	SCREW - FHM, M3 X 10mm
1	1	2-09457	CLAMP METAL, 3/8
SYM	REQD	PART NO	DESCRIPTION

Wheel Clamp / Target

North America (AC200 II):

EAA0395J10B – WHEEL CLAMP ASSY LF

EAA0395J14B – WHEEL CLAMP ASSY RF

EAA0381J24B – WHEEL CLAMP ASSY LR

EAA0381J23B – WHEEL CLAMP ASSY RR

Europe (AC100 II):

EAA0395J10C – WHEEL CLAMP ASSY LF

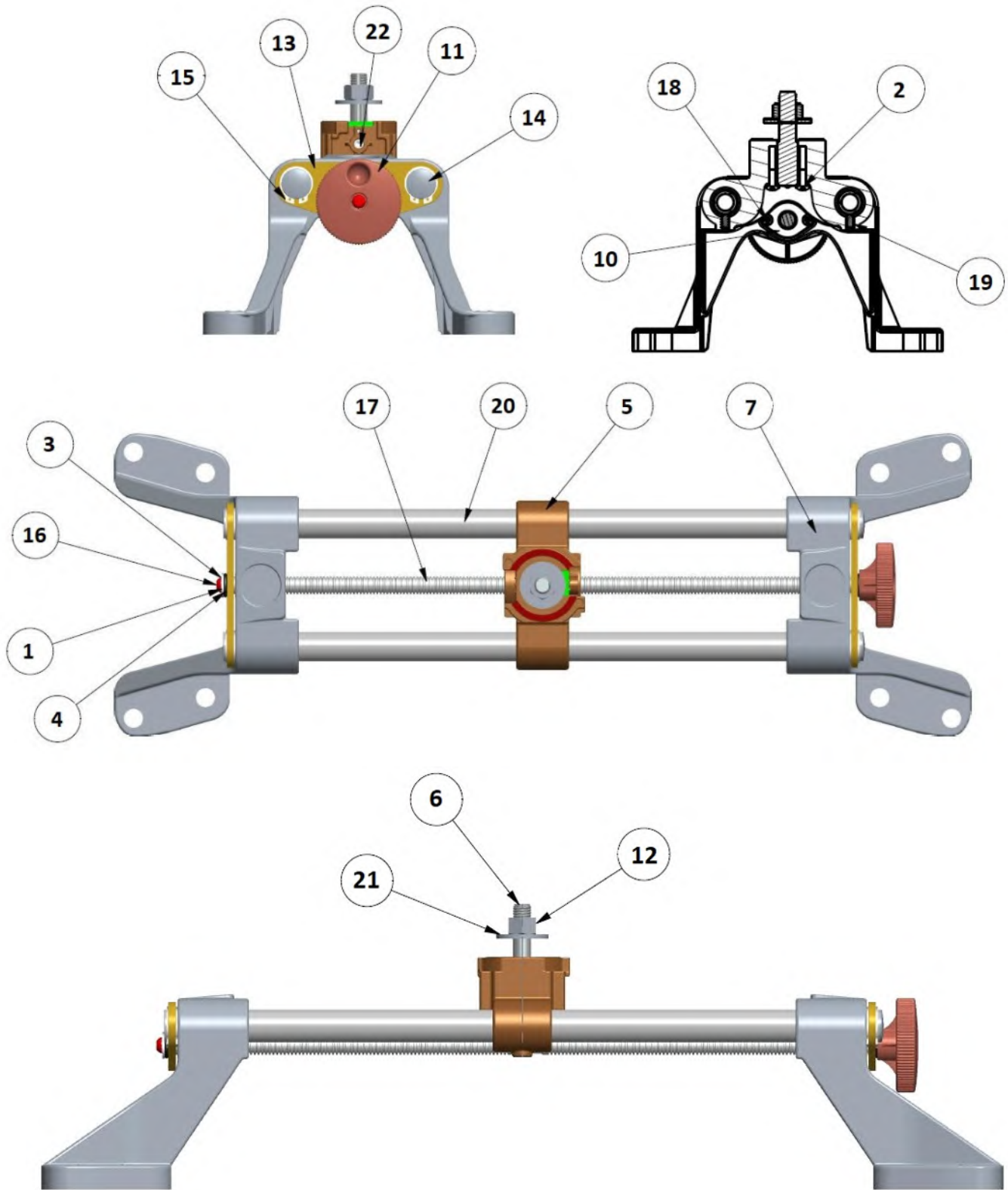
EAA0395J14C – WHEEL CLAMP ASSY RF

EAA0381J24C – WHEEL CLAMP ASSY LR

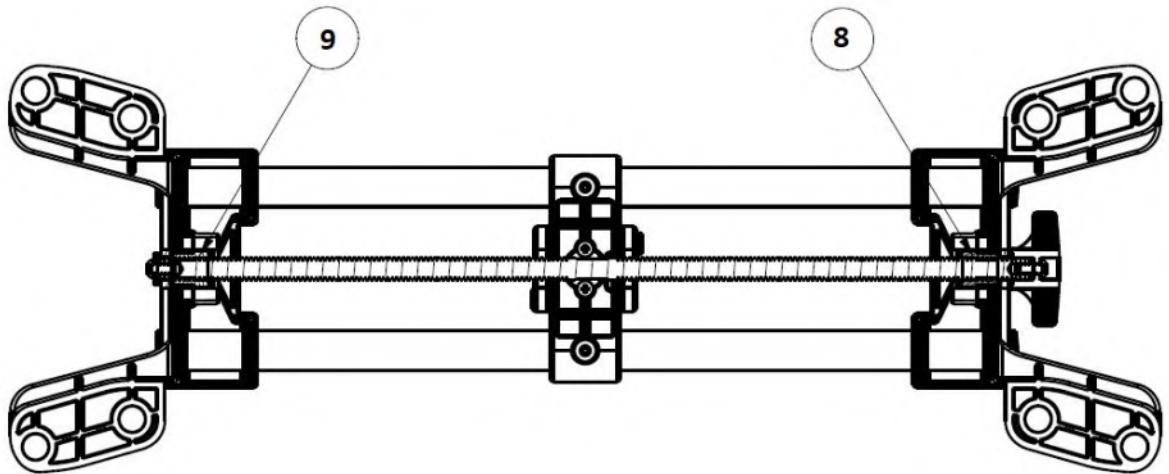
EAA0381J23C – WHEEL CLAMP ASSY RR

ITEM	REQD	PART NO.	DESCRIPTION
1	2	1-20733A	NUT – JAM, M8
2	2	1-54810A	SCREW – SET., 8x20MM, CONE PT
3	1	EAK0320J33A	KIT – FRONT XD TARGET
		EAK0305J73A	KIT – XD TARGET, REAR
4	1	EAA0446J79A	ASSY., WHEEL CLAMP, AC200 II, FRONT
		EAA0446J79B	ASSY., WHEEL CLAMP, AC100 II, FRONT
5	1	EAL0415J09A	DECAL, INDICATOR, LF
		EAL0415J10A	DECAL, INDICATOR, LR
		EAL0415J11A	DECAL, INDICATOR, RR
		EAL0415J12A	DECAL, INDICATOR, RF
	1	EAK0268J41B	KIT, GRABBER, DUAL END (SET OF 4)
	1	1-08584A	CORD-BUNGEE, BLACK 16”

EAA0446J79A: WHEEL CLAMP, AC200 II



EAA0446J79A: WHEEL CLAMP, AC200 II



22	1	I-54810A	SCREW - SET, M8 X 20mm, CONE PT
21	1	I-1041	WASHER-FLAT, 1/2 ZINC
20A		EAM0143V02A	TUBE - WHEEL CLAMP, SHORT
20	2	EAM0143V01A	TUBE-WHEEL CLAMP, LONG
19	2	I-22188A	SET SCREW, M6x12MM
18	4	I-26506A	SCREW-PHMS, M4x0.7MMx25MM
17A		EAM0143V04A	SCREW-DOUBLE LEAD, SHORT
17	1	EAM0143V03A	SCREW-DOUBLE LEAD, LONG
16	2	I-23988A	SCREW-BHCS, M6x12MM
15	8	I-17677A	RING-RETAINING, 21MM, ZN
14	2	EAC0079J51B	PLUG-RUBBER, 19MM HOLE
13	2	EAS2191V01A	PLATE-RETAINER, SMALL
12	1	I-933	NUT-1/2-13 HEX
11	1	EAC0133V04A	KNOB, WHEEL CLAMP
10	2	EAC0079J50A	COVER-FEED SCREW, LOCK
9	1	EAM0044J20A	BUSHING-THREADED, BRASS, RH
8	1	EAM0044J24A	BUSHING-THREADED, BRASS, LH
7	2	EAC0133V01A	BRACKET, HIGH FOOT
6	1	EAM0143V05A	SHAFT-TARGET, SHORT
5	1	EAC0133V03A	BRACKET, CENTER
4	2	EAC0079J52A	WASHER-THRUST, PLASTIC
3	2	I-3447	LOCKWASHER M6, INT. TOOTH
2	2	I-16006A	SCREW, PH, M5x12MM, BLK
1	1	I-14144A	WASHER-FLAT, M6
SYM	REQD	PART NO	DESCRIPTION

(17A and 20A are AC100 II parts)

ACCESSORIES:

EAK0363J88A

MOBILITY CART



EAK0268J63B

QUICK CLAMP, AC100/AC200 II



EAK0256J71A

RIDE HEIGHT MEASURING KIT



EAK0320J58A

LIVE RIDE HEIGHT MEASURING KIT



EAK0268J62A

WHEEL CLAMP AC100 II, AC200 II, 4" DIAMETER EXTENSION KIT



EAK0289J62B

WHEEL CLAMP AC100 II, AC200 II, 2" HEIGHT EXTENSION KIT



