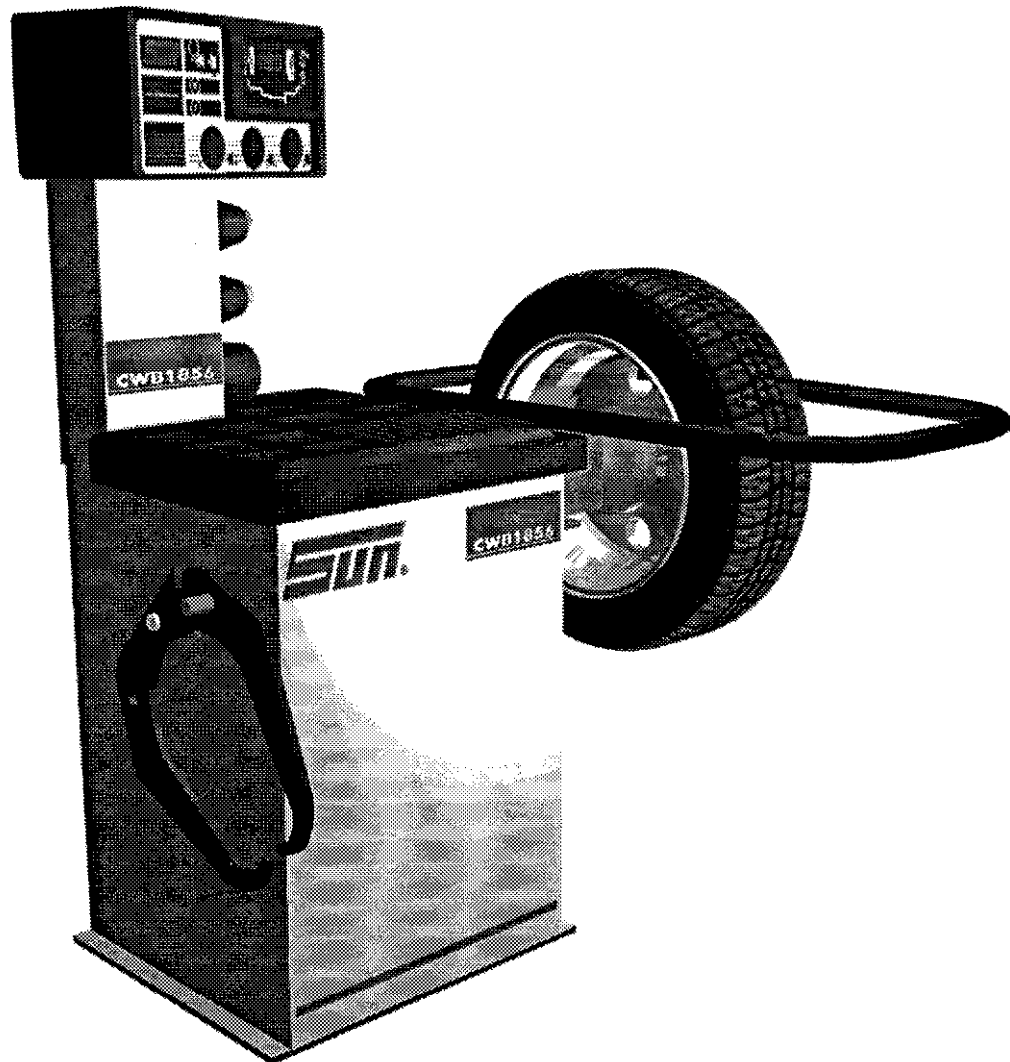
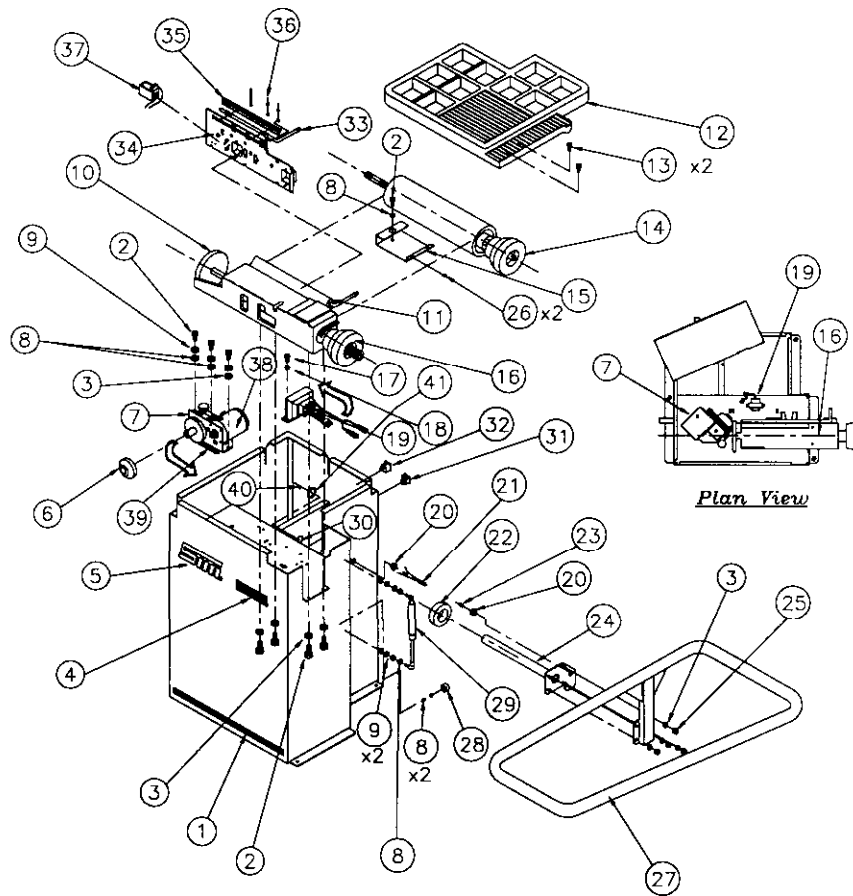

CWB 1856

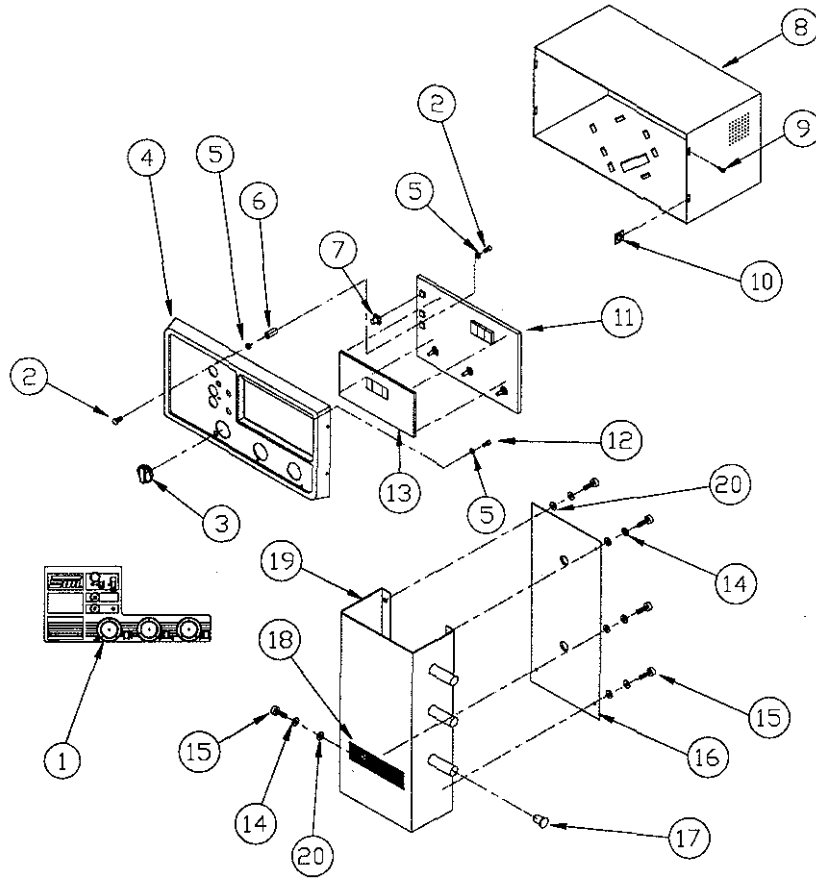
Spare Parts List





CWB 1856 Base Assembly

Key	Part Number	Key	Description	Patl Number
1	Line Label	B6816		
2	Hex Screw ($\frac{5}{16}$ -18 x 3/4	B 0102-3116-12 x8		
3	Washer ($\frac{5}{16}$)	□ 0205.0032 x9		
4	CWB 1656 Label	B 8818		
5	Sun Label	B 8815		
6	Drive Wheel (Rad)	B 1155-01		
7	Motor Drive Assembly (110v)	B 7775-01		
8	Washer ($\frac{5}{16}$)	B 0205-0031 x8		
9	Spring Washer (M8)	B0252-0080 x5		
10	Drive Wheel	B 7638		
11	Back Panel Assembly	B 7673-05		
12	Weight Tray	B 8657		
13	Self Tap Screw ($\phi 4.2$ x 16)	B 0974-0042-16 x.2		
14	Floating Assembly	B 7666-07		
15	Tray Support	B 869S-01		
16	Measuring Head Assembly	B 7305-03		
17	Machine Screw (M4 x 10)	B 0169-0040-10 x2		
18	Washer (M4)	B 025243040 x2		
19	Transformer Assy (1 10V)	B 7814-01		
20	Magnet Housing	B 8689 X2		
21	Motor Sensor Cable Assy	B 8090		
22	Deep Groove Ball Bearing	B 3001-0015		
23	Magnet	B1910		
24	Pivot Tube	B 6017.02		
25	Nyloc Nut (%-I 6)	B 0302-3118 x4		
26	Lf-Cfip (small)	B 3700-0002 x2		
27	Frame Weldment	B 8724		
28	Rubbar Buffer	B 4500-0139		
29	Gas Spring Kit (Frame)	B 4500-0121		
30	Bearing, Plastic	B 8274		
31	On/Off Switch	B 681 0-0725		
32	Inlet Fused Mains	B 7310-0503		
33	Offset Scale Assembly	B 8405-05		
34	Back Panel	B 1533-03		
35	Cover Scale	B 1561		
36	Tie Wrap (Balck)	B 4500-0029		
37	Solenoid Assembly	B 6242		
38	Motor, 110 Volt	B 6216-01		
39	Timing Salt	B 3307-0001		
40	Cotter Pin $\frac{3}{16}$ x2"	B 0716-2000		
41	Hood Shim 1.5mm	B 7816-02		



CWB 1856 Display Assembly

Key	Description	Part Number	Key	Description	Part Number
1	Sun Overlay	B 8761-02	11	PCB Assembly	B 5056-0007-01
2	Hex Screw (3-32 x 1/2)	B 0119-0832-08 x8	12	Self Tap Screw	B 0901-0613-06
3	Control Knob Assembly	B 1591-02 x3	13	Display Panel Assembly	B 8041-06
4	Display Bezel Assembly	B 8668	14	Spring Washer (M6)	B 0252-0060 x6
5	Nylon Washer (M4)	B 0257-0040 x9	15	Hex Screw (M6 x 16)	B 0152-0060-16 x5
6	Stand-off	B 3800-0008 x4	16	Display Upright Back Panel	B 8733-02
7	Switch Extension Assembly	B 6561-01 x3	17	Blanking Plug	B 3900-0019 x6
8	Display Weldment	B 8669-01	18	CWB 1656 Label	B 8818
9	Self Tap Screw (6-18 x 1/2)	B 0925-0613-08 x4	19	Display Upright	B 6732-02
10	I-f-clip (small)	B 3700-0002 x4	20	Washer (M6)	B 0251-0060 x5