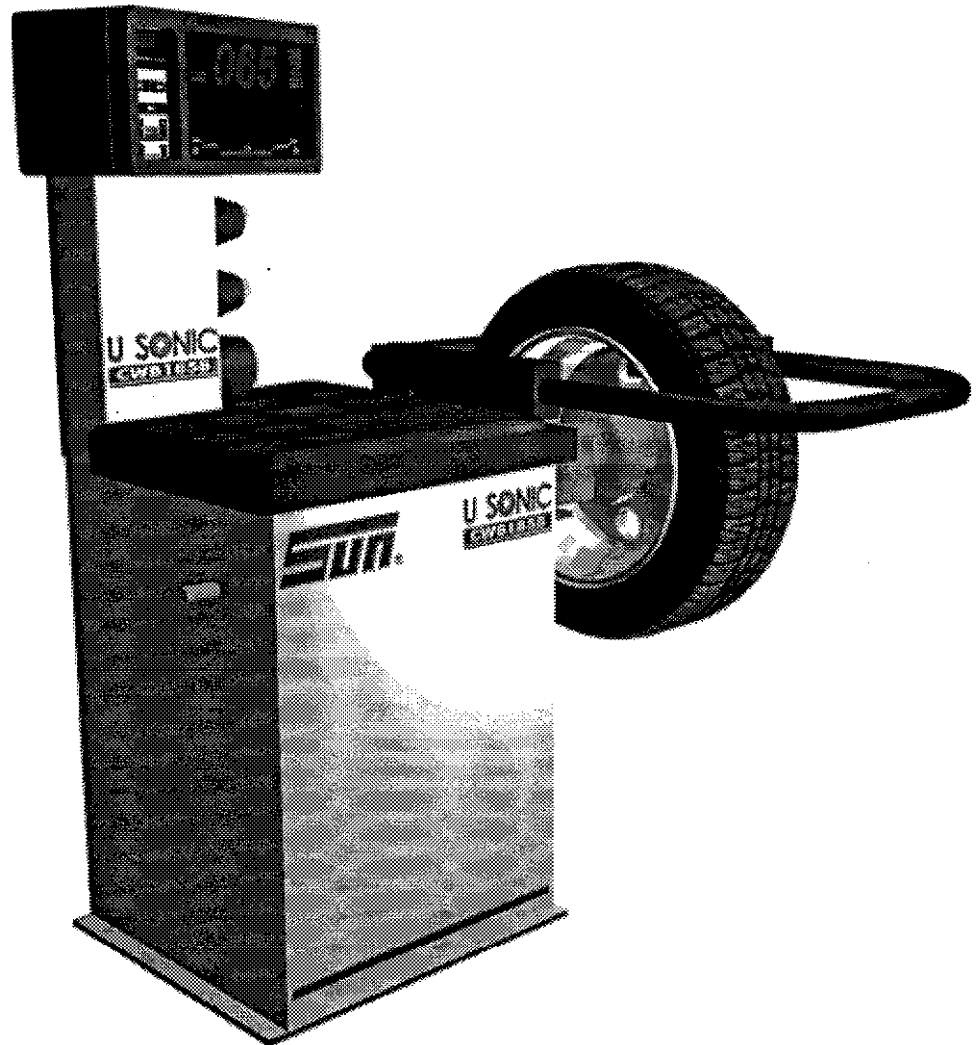
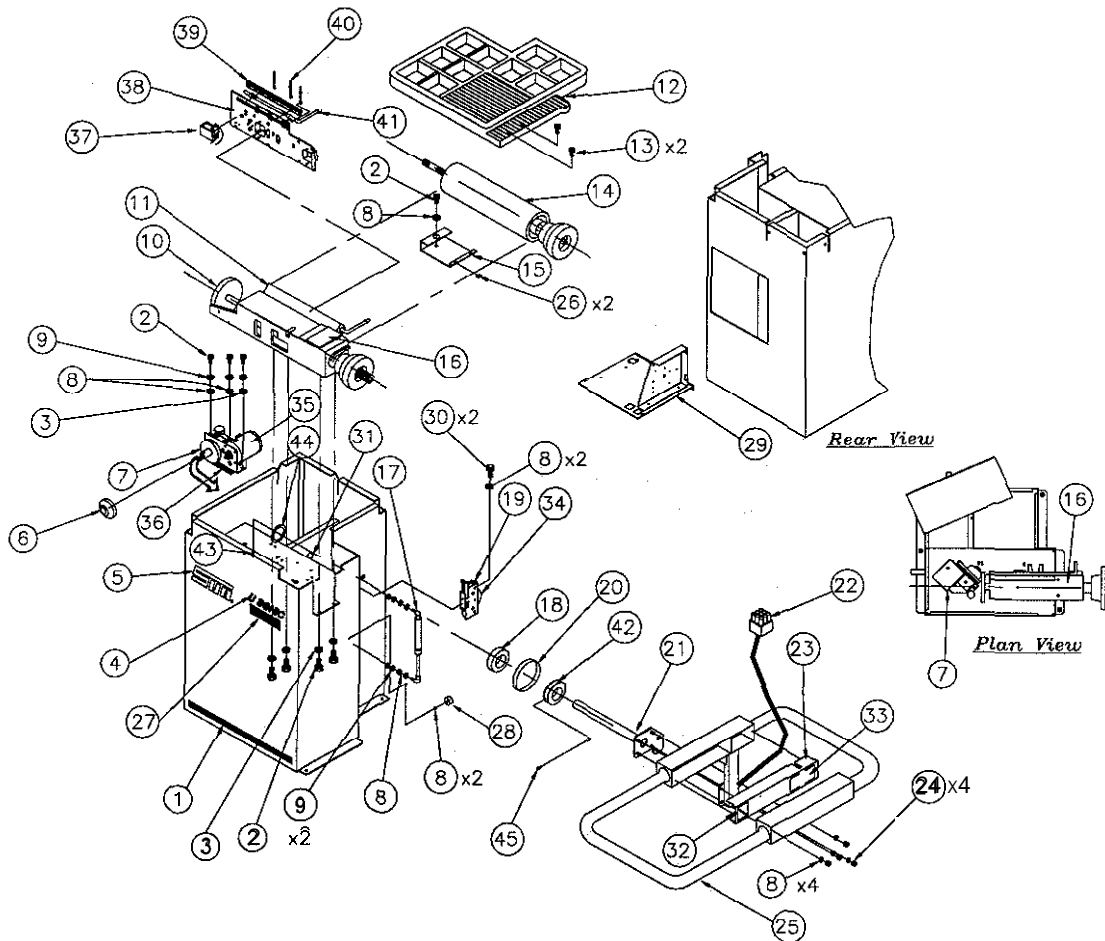

CWB 1858

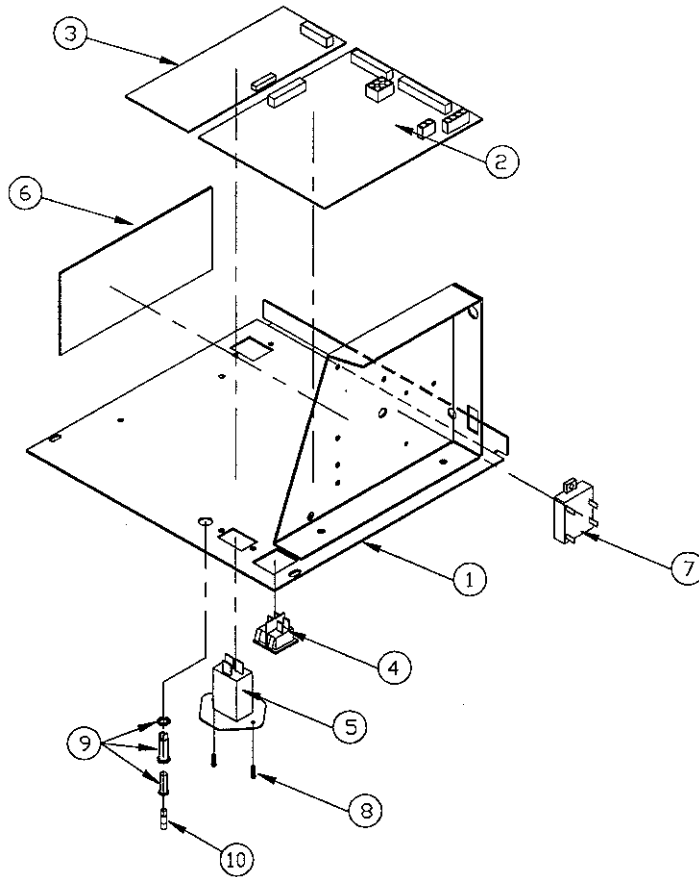
Spare Parts List





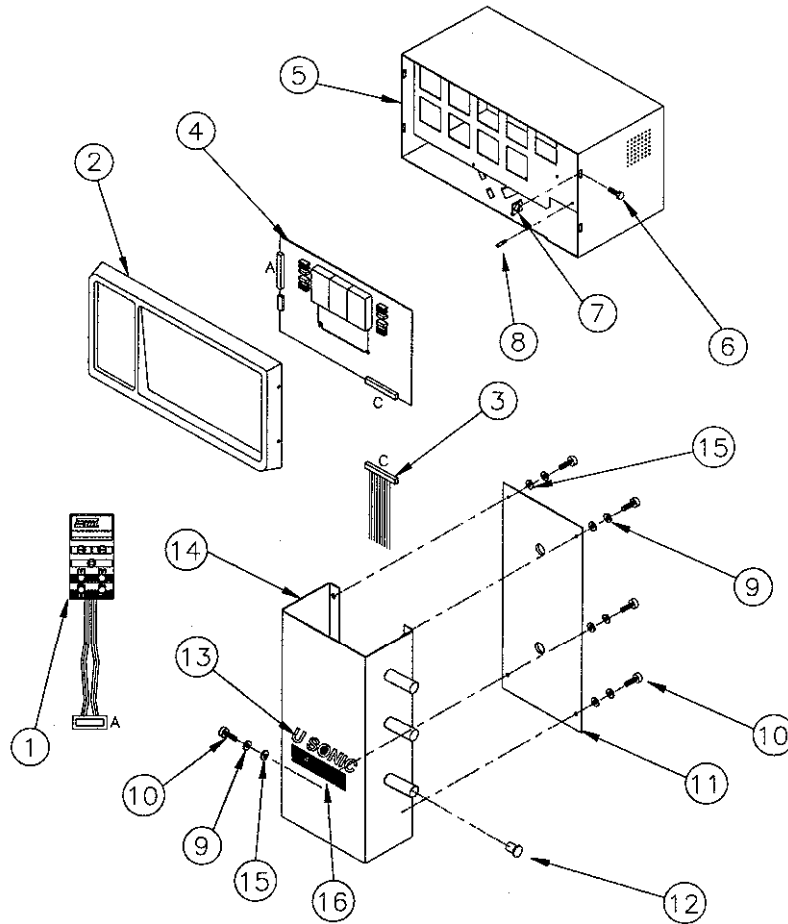
CWB 1858 Base Assembly

Key	Description	Part Number	Key Deaorption	Parl Number
1	Sun Line Label	B8816	23	Ultrasonic Housing Assembly B 8186-02
2	Hex Screw ($\frac{5}{16}$ -18x 3/4)	B 0102-3116-12 x8	24	Nyloc Nut (5/1,-18) B 0302-3118 x4
3	Washer ($\frac{5}{16}$)	B 0205-0032 x9	25	Ultrasonic Frama Assembly B 8187-02
4	Sun Usonic Label	BB614	26	U-Type Clip (small) B 3700-0002 x2
5	Sun Label	B8S15	27	CWB 185S Label B 8817
6	Drive Wheel (Red)	B 1155-01	28	Rubber Buffer B 4500-0t39
7	Motor Drive Assembly (1 IOV)	B 62t 7-04	29	PCB Door Assembly B 8045
8	Washer ($\frac{3}{8}$)	B 0205-0031 x5	30	Screw Hex ($\frac{5}{16}$ 16-1 8) BO102-3116-10 x2
9	Spring Washer (M8)	B 0252-0080 x5	31	Bearing, Plastic B 8274
10	Drive Wheel	B 7638	32	Reflector, Ultrasonic B 7691
11	Back Panel Assembly	B 7673-o5	33	Transducer PCB B8199
12	Weight Tray	B 8657	34	Timing Disk B 1264
13	Self Tap Straw (0.42 x 16)	B 0974-0042-16 x2	35	Motor, 110 Volt B 8216-01
14	Floating Assambly	B 7666-02	36	Timing Belt B 3307-0001
15	Tray Support	B 8696-91	37	Solenoid Assembly B 8242
16	Measuring Head Assembly	B 7305-03	38	Back Panel B 1533-03
17	Gas Spring Kit (Frame)	B 4500.0121	39	Cover Scale B 1581
18	Bearing	B 3001-0015	40	Tie Wrap (Balck) B 4500-0029
19	Frame Encoder Assembly	B 8053	41	Offset Scsle Assembly B 8405-05
20	Frame Enccder Belt	B 3307-0003	42	Drive Pulley B 3306-0007
21	Pivot Tube	B 8017-02	43	Cotter Pin $\frac{3}{16}$ x2" B 071 E2000 ,>..
22	Frama Cable Kit	B 8685	44	Hoed Shim 1.5mm B 7816-02
			45	Set Straw M3x12 B 0453-0030-12



CWB 1858 Ultrasonic PCB Door Assembly

Key Description	Part Number	Key Description	Part Number
1 PCB Door Weldment	B 8149	6 PCB. PSU Assy	B 7600-0009
2 Pcb Balancer Process Assy	B 5110-007	7 5 Amp Relay	B 7701-0005
3 Display PCB Ultrasonic Assy	B5111-007	8 M3x12 C/S Screw	B 0170-0030-12
4 On/Off Switch	B 6810-0725	9 Fuse Holder, Panel Mount	B 7102-0007
5 Mains Power Inlet Filter	B 7310-0703	10 Fuse, 20x5mm Slow Blow, 10 Amp (Type T)	7101-0100-01



CWB 1858 Display Assembly

Key	Part Number	Key	Part Number
1	Keypad Overlay B 8760-02	9	Spring Washer (M6) B 0252-0060 x5
2	Display Bezel B 8514	10	Hex Screw (M6 x 16) B 0152-0060-16 x5
3	Display Cable Assembly B 8081-02	11	Display Upright Back Panel B 8733-02
4	PCB Display Assembly B 8197-02	12	Blanking Plug B 3900-0019 x6
5	Display Weldment B 8869-02	13	Usonic Label B 8614
6	Screw ST (6-18x%) B 0925-061S-08 x4	14	Display Upright B 6732-02
7	U-Clip (small) B 3700-0002 x4	15	Washer (M6) B 0251-0060
8	PCB Stand-offs B 3800-0033 x5	16	CWB 1858 Label B8817