

Snap-on®

WHEEL BALANCER

EEWB304D



Parts Manual

TEEWB304D3

All information contained or disclosed in this document is considered confidential and proprietary by Snap-on Equipment. All manufacturing, use, reproduction, and sales rights are reserved by Snap-on Equipment and the information contained herein shall not be used in whole or in part without the express written consent of Snap-on Equipment.

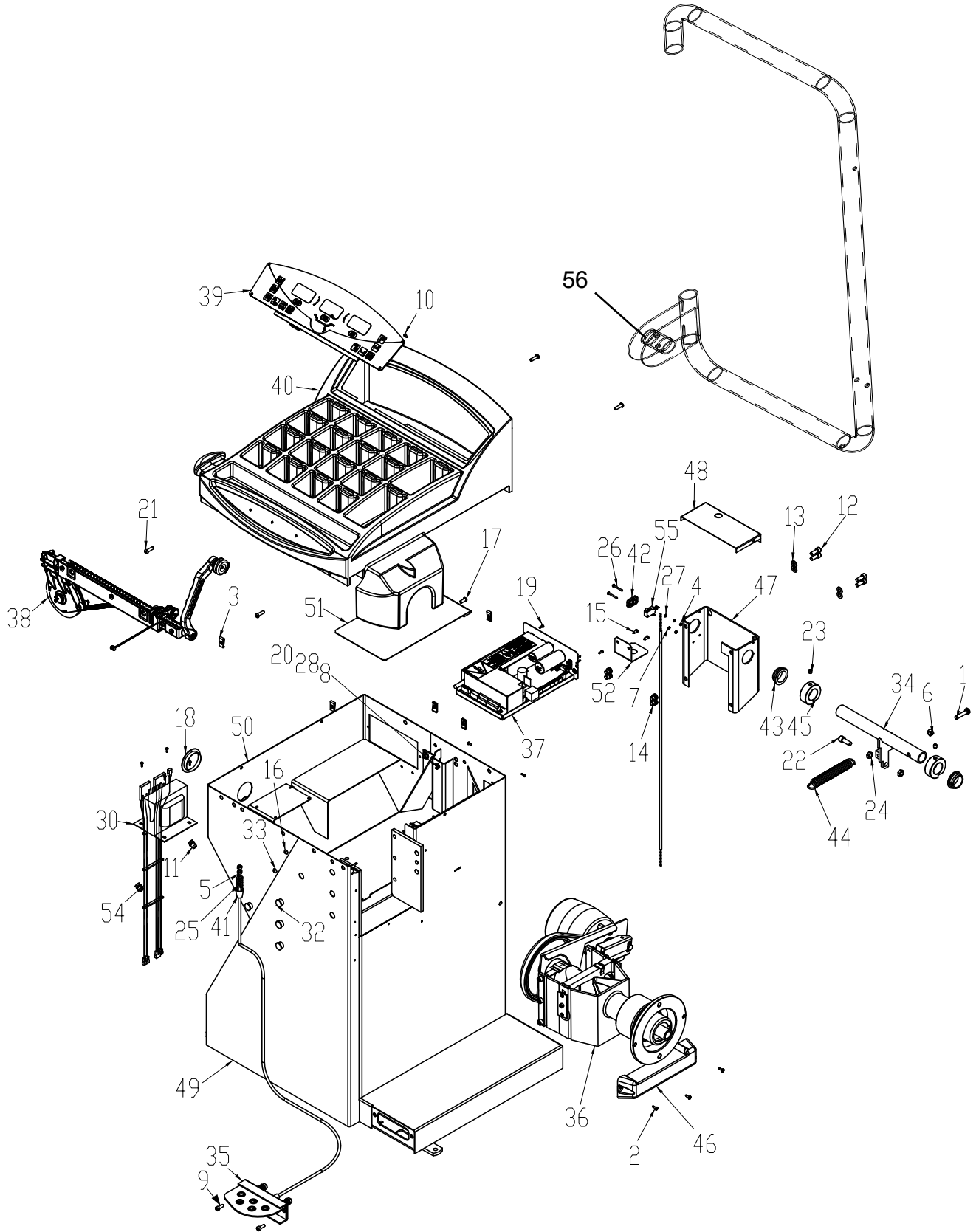
Table of Contents

BOM	3
BALANCER ASSEMBLY	4
UPPER DISPLAY	6
1D / 2D SAPE ASSEMBLY	7
VIBRATORY ASSEMBLY	8
IBP BOX	9
EAA0338G83A	9
CONES AND ACCESSORIES.....	10

BOM

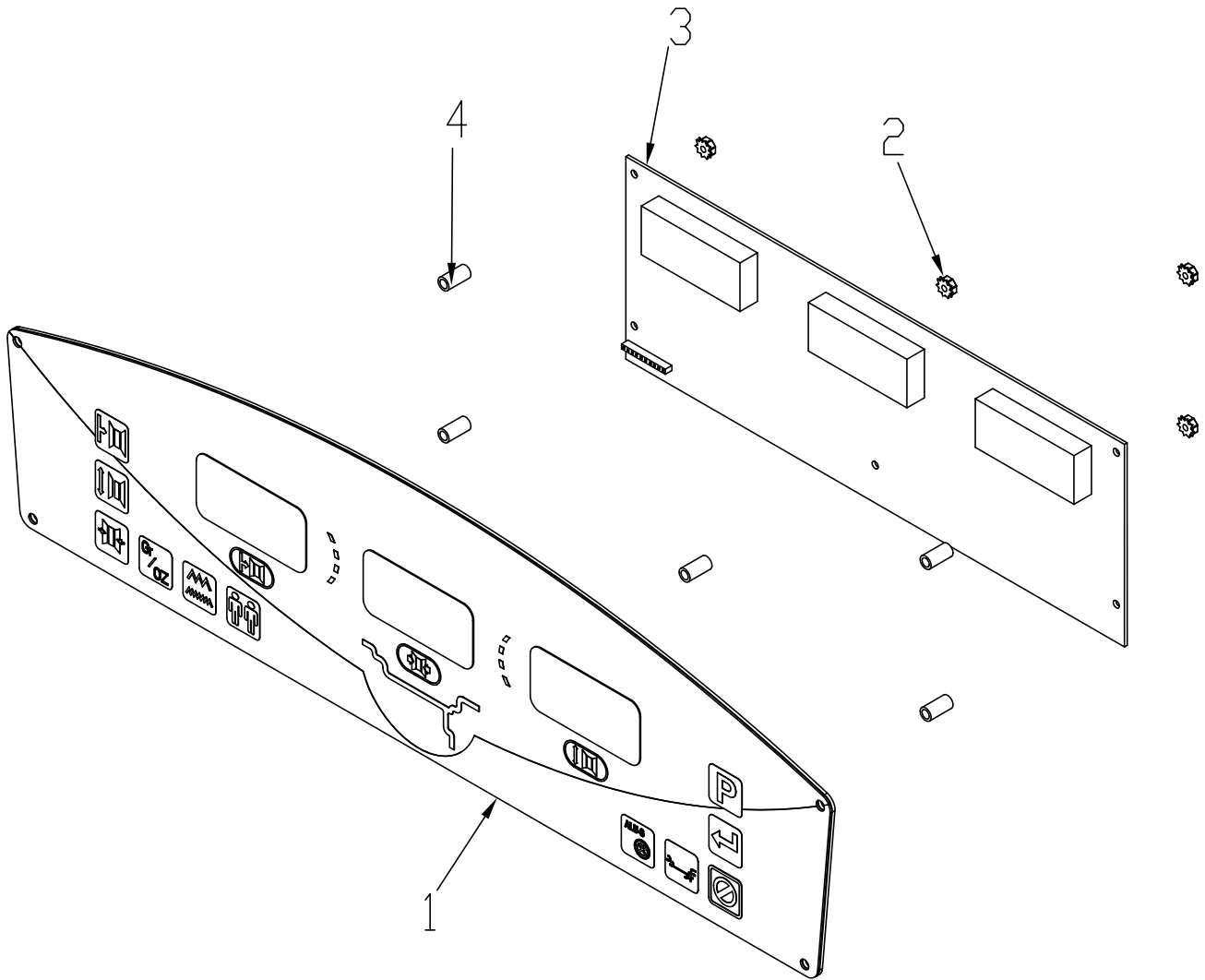
PART NUMBER	DESCRIPTION
1-01215A	SCREW - LAG, 5/16 X 1 ½
1-04076A	PLUG - HOLE
1-06939A	NUT - TINNERMAN, .049
1-1101	SCREW-HHCS 3/8 - 16 X 2
1-541	WASHER - FLAT, 5/16
1-8133	NUT-KEPS 3/8-16
2-3657	CABLE CLAMP (FLAT CABLE)
5-05245A	CABLE TIE - 8"
5403	CERTIFICATE-INSTALL REGISTRAT
EAA0247G21A	CALIPER - RIM WIDTH
EAA0263G79A	QUICK NUT KIT, 40MM
EAA0369J10A	BAL ASSY - SNAPON LOW DIGITAL
EAC0053J09A	COVER - WHEELGUARD Y2K
EAC0060G02A	FLANGE - COVER, ACCESSORY HOOK
EAL0341J96A	LABEL - BALANCER WARNING, REAR
EAL0341J97A	LABEL - BALANCER WARNING, SIDE
EAL0341J44A	LABEL-MAX WHEEL DIA
EAL0341J60A	LABEL - PATENT, WHEEL BALANCER
EAL0343J76B	LABEL-ELECTRICAL/SERIAL
EAM0003J05A	CONE - SMALL
EAM0003J06A	CONE - SMALL
EAM0003J07A	CONE - LARGE
EAM0003J08A	CONE - TRUCK
EAM0005D40A	CALIBRATION WEIGHT
EAM0006G01A	HOOK - ACCESSORY STORAGE
EAS2021J15A	WELDMENT - WHEELGUARD M1
EAX0039J00A	CORD POWER, 115V
KN300A	DECAL - LOGO, SNAP-ON
ZEEWB304D9	LIT PACK - SNAP-ON LOW DIG

BALANCER ASSEMBLY
EAA0369J10A



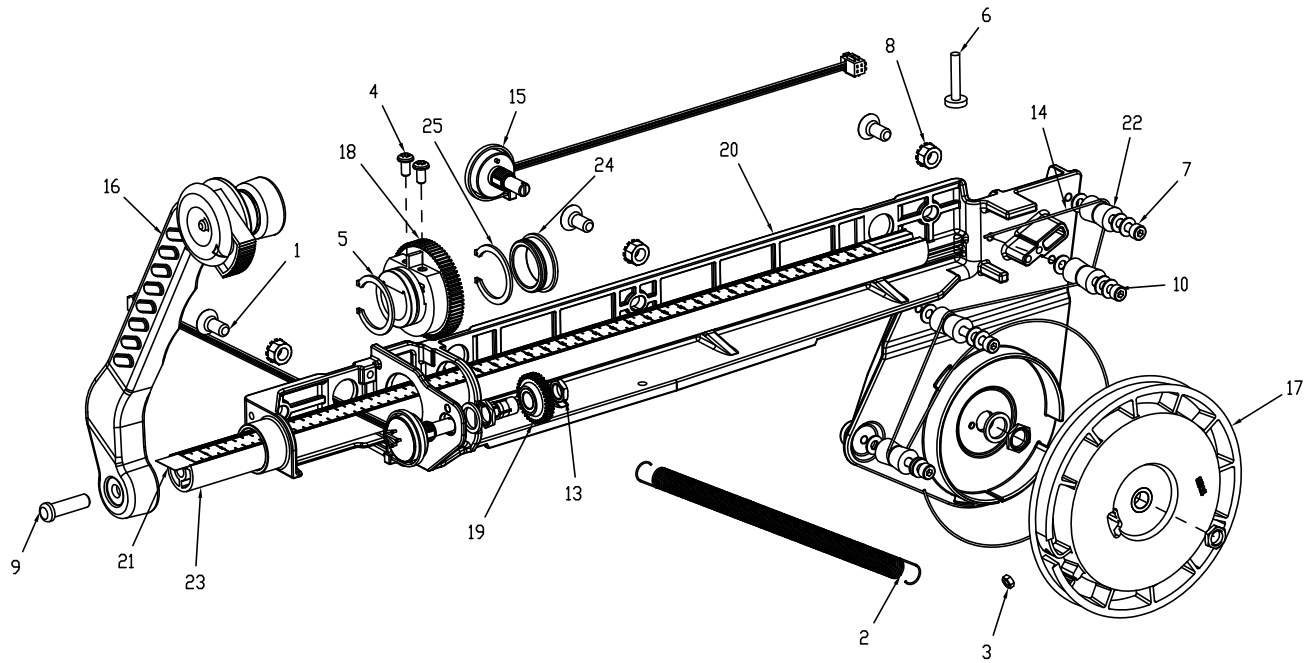
SYM	REQ	PART NO	DESCRIPTION
1	1	1-01515A	SCREW - HHMS 8M -1.25 X 50MM
2	3	1-07424A	SCREW - PAN HD, 8-18 X 1/2
3	6	1-07439A	NUT - SPEED, "U" TYPE,
4	2	1-11233	NUT - HEX, M3 DIN 934
5	2	1-11633	NUT-M6 X 5,2MMTHK, BLK
6	1	1-11833	NUT - M8 - X 1.25 DIN 934
7	2	1-1248	WASHER SHAKE PROOF, M3
8	1	1-1548	WASHER-EXT,SHAKEPROOF 6MM
9	2	1-16309	SCREW - SHCS, M6 X 16MM,
10	4	1-17223A	SHEETMETAL SCREW PHIL HEAD
11	4	1-17659A	NUTSERT - M10
12	4	1-17709	SCREW - SHCS M8 X 20MM
13	4	1-17741	WASHER, 8MM DIN125A
14	4	1-18359A	NUTSERT, M8
15	2	1-18523A1	SELF TAPPING SCREW D4,8X13MM
16	8	EAS2116G12A	SPACER - VIB 0.2MM
17	2	1-2509	SCREW-BHCS, 1/4 - 20 X 5/8
18	1	1-2676	PLUG-HOLE, 2"DIA
19	8	1-3724	SCREW-SELF TAP,5 X 10MM
20	1	1-7558	POP RIVET-3/16"
21	4	1-44009A	SCREW-BHCS, 1/4-20 X 7/8
22	1	1-47809A	SCREW - SHCS 3/8-16 X 1
23	2	1-47810	SCREW, SET, FLT PT M8 - 1.25 X 8MM
24	2	1-5733A	NUT-HEX,3/8
25	1	1-6668	COMPRESSION SPRING
26	2	1-7104	SCREW - PAN HS, M3 X 30
27	2	1-9541	WASHER-FLAT,M3 DIN 125A
28	1	2-23201	TERMINAL LUG-6.3MM X .8MM POP RIVET
29	2	2-3657	CABLE CLAMP- FLAT CABLE
30	1	7-16201A	TRANSFORMER- 500VA AUTOMATIC
31	1	8-09619A	STRAIN RELIEF - FLAT CABLE
32	4	8-7216	PLUG-HOLE, 16MM DIA
34	1	EAA0255J29A	WHEELGUARD TUBE- M CABINET ASSY
35	1	EAA0263G07A	ASSY-BRAKE PEDAL
36	1	EAA0364G85A	ALU VS MOT. INT.FL. D. 28.5/40
37	1	EAA0338G83B	ASSY - IBP DIGITAL BOX
38	1	EAA0346J25A	STAND. M1 SAPE 1D-2D ASSY
39	1	EAA0346J64A	ASSY - DISPLAY, SNAP-ON LOW DIG
40	1	EAC0053J01A	TRAY-WEIGHT,SO LOW DIG
41	1	EAC0053J15A	BRAKE SPACER
42	1	EAC0053J16A	MICROSWITCH PLATE
43	2	EAC0060G03A	BUSHING, WHEELGUARD
44	1	EAM0003J21A	SPRING-EXTENSION WHEELGUARD, HD
45	2	EAM0006G02A	WHEELGUARD TUBE RING
46	1	EAM0062G50A	VIBRATORY SYSTEM COVER
47	1	EAS2021J43A	BACKPACK- M CABINET BASE
48	1	EAS2021J44A	BACKPACK- M CABINET TOP
49	1	EAA0369J32A	CABINET ASSY - M2, RED
51	1	EAS2113J53A	SHIELD - FIRE
52	1	EAS2113J77A	BRACKET - CAL WEIGHT
53	1	EAW0233J01A	HARNESS - DISPLAY PCB
54	1	EAW0233J07A	HARNESS-WIRING, TRANSFORMER
55	1	EAW0233J08A	CABLE-SWITCH ASSY
56	1	EAS2021J15A	WHEELGUARD WLDMT

UPPER DISPLAY
EAA0346J64A



SYM	REQ	PART NO	DESCRIPTION
1	1	EAA0346J22A	ASSY -DISPLAY, MEMBRANE/PANEL
2	5	1-15033	NUT-KEPS, M3 - .5
3	1	EAP0192P80A	PCB ASS'Y-DISPLAY
4	5	1-13862A	SPACER-1/4OD X .166ID X .5

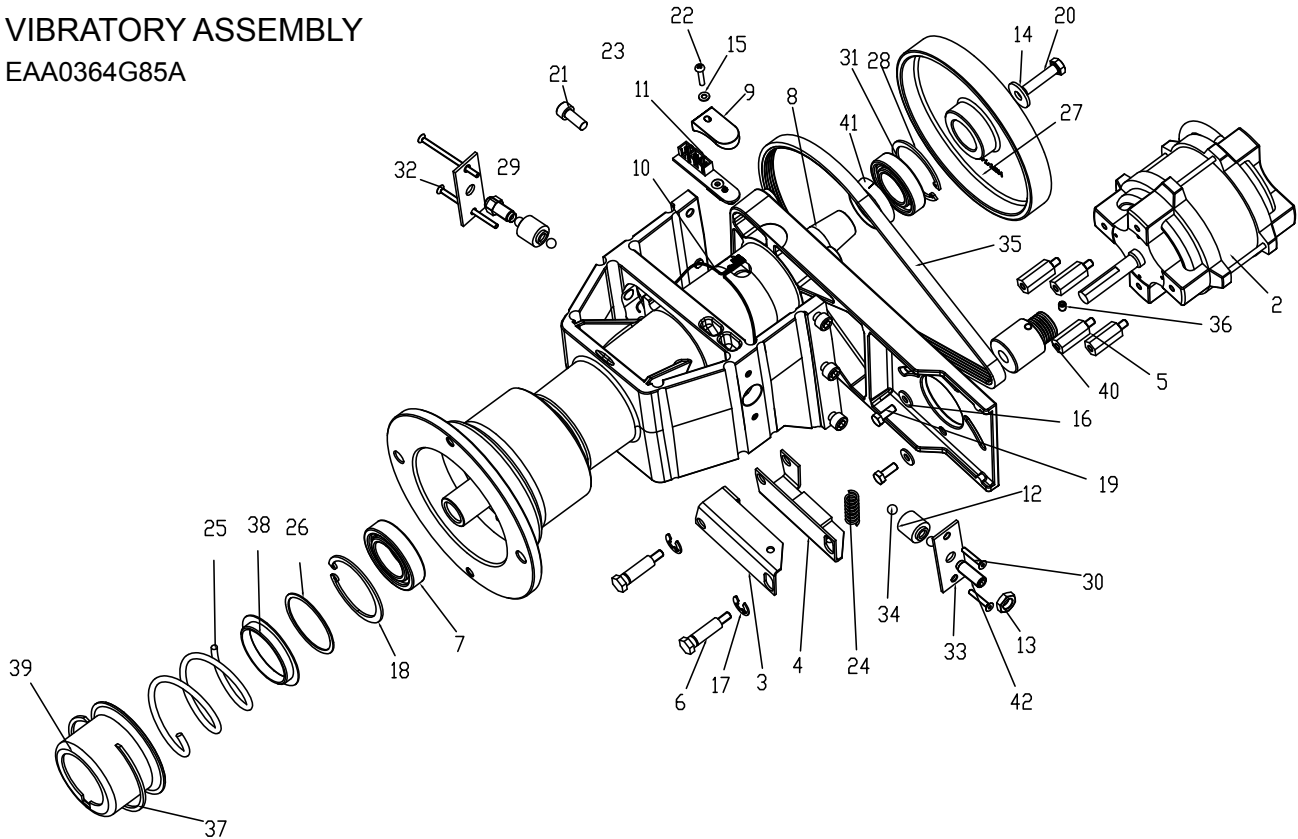
1D / 2D SAPE ASSEMBLY
EAA0346J25A



SYM	REQ	PART NO	DESCRIPTION
1	3	1-27903A	SCREW - M6 X 14MM FHMS, SKT DIN 7991
2	1	1-06567A	STAND SAPE TENSION SPRING
3	1	1-11233	NUT - HEX, M3 DIN 934
4	2	1-11726A	SCREW, SELF TAPPING FOR PLASTIC
5	1	1-13377A	CIRCLIP-27MM X 1.20MM DIN 471
6	1	1-13609	SCREW-HHCS,M4-16 X 8.8
7	4	1-13909	SCR - HEX SKT HD CAP (M4 X 30MM)DIN912
8	3	1-25433A	NUT-M6 KEPS, SERRATED LW ZINC
9	1	1-3824	SCREW-SELF TAP,6 X 12MM
10	12	1-9641	PLAIN WASHER D4MM
13	2	2-07657A	CLAMPING DEVICE W/NUT
14	1	6-00604A	ROPE - SPECTRA 1000, 150 LBS
15	2	EAA0266D20A	ROTATIVE TRANSDUCER 100HM
16	1	EAA0346J26A	ASSY - SAPE ARM W/ EJECTOR
17	1	EAC0058D06A	RIEMENHALTEROLLE MIT EINLEGETEIL
18	1	EAC0058D12A	COG WHEEL - 56 TOOTH
19	1	EAC0058D13A	COG WHEEL 28 TEETH
20	1	EAC0087G60A	M1 SAPE SUPPORT
21	1	EAL0349G31A	DISTANCE SCALE
22	4	EAM0005D35A	REEL-GUIDING,SAPE
23	1	EAM0053G19A	STANDARD. ROD SAPE, M1
24	1	EAM0068G76A	S2-2D SAPE BUSHING
25	1	1-4577	RING-SNAP,25 X 1.20

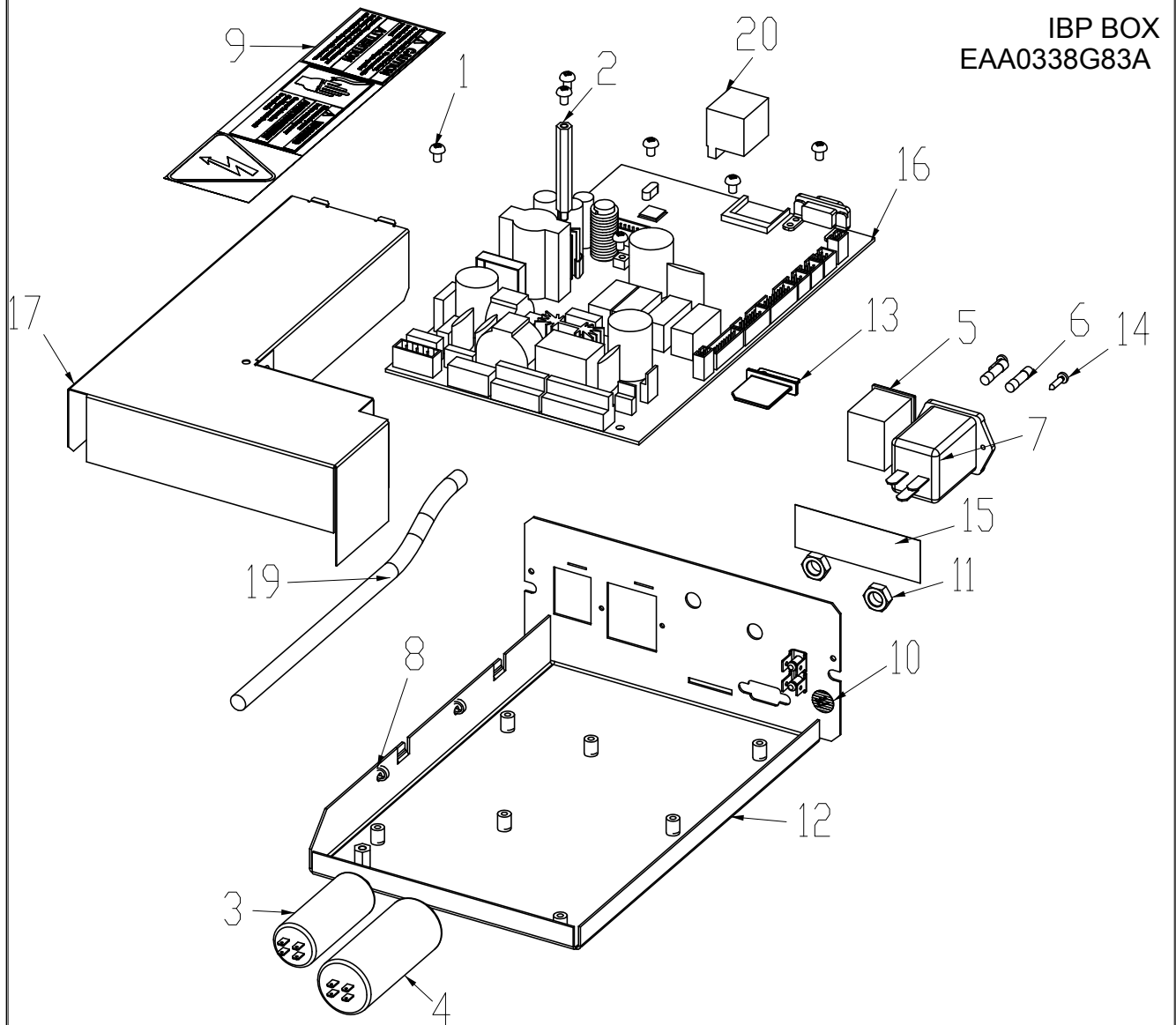
VIBRATORY ASSEMBLY

EAA0364G85A



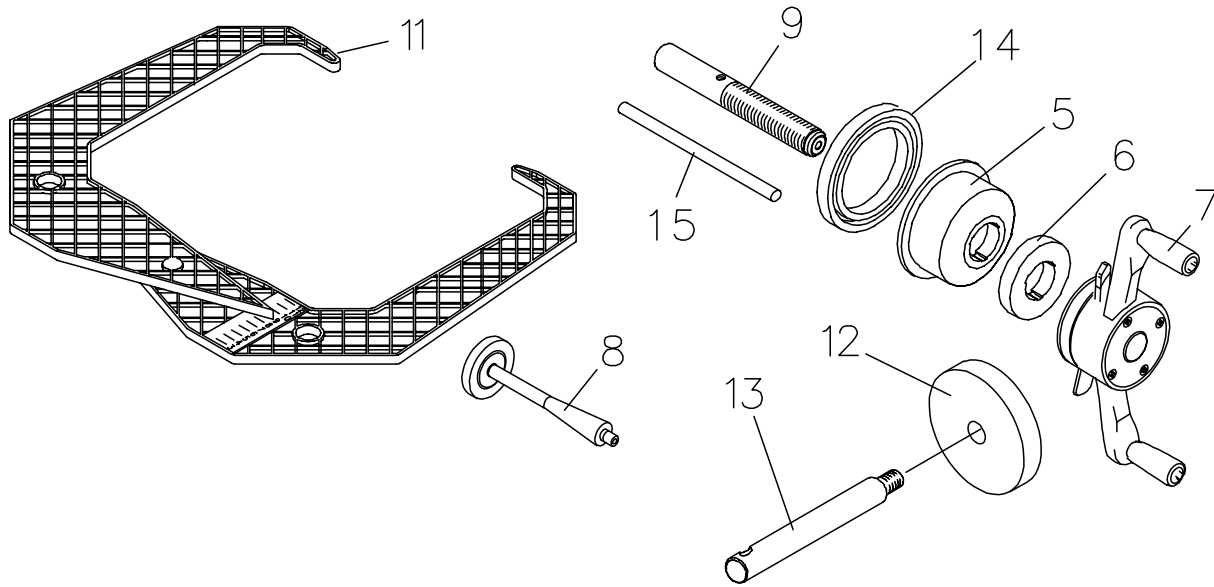
SYM	REQ	PART NO	DESCRIPTION
1	1	EAM0079G46A	MACHINED INTEGRATED FLANGE FOR ALU VS
2	1	2-59366A	Y2K UL MOTOR CAR VERSION EME
3	1	EAA0260D56A	BRAKE LEVER A CPL.
4	1	EAA0260D57A	BRAKE LEVER B CPL.
5	4	EAM0005D09A	MOTOR DISTANCE BOLT
6	2	EAM0005D10A	BOLT SW13
7	1	1-06663A	BALL BEARING 6007 2NSE 62/35/14
8	1	EAM0048G97A	ALU VS MAIN SHAFT INT.FLANGE D 28/40
9	1	EAC0094G11A	ALU VS ENCODER BOARD PROTECTION
10	1	EAW0240G67A	VIBRAT.SYSTEM CABLE WITHOUT TEMP.SENSOR
11	1	EAA0344G00A	OPTO-ENCODER BOARD WITH LENS
12	2	EAA0260D59A	PIEZO SENSOR
13	1	1-04634A	NUT - HEX, M10, 1,5MM PITCH, ZINC
14	1	1-17841	WASHER - D. 8X24
15	1	1-9641	PLAIN WASHER D4MM
16	2	1-16641	WASHER - PLAIN D 6MM
17	2	1-13177	CIRCLIP D. 9
18	1	1-20777A	RING, STOP FOR HOLES D62X2 UNI7437
19	2	1-46701A	SCREW HEX. HEAD M6X16
20	1	1-32901	SCREW, HEXAGON CAP 8X35 8.8 A2J DIN933
21	6	1-17709	SCREW - SHCS M8 X 20MM ISO4762, DIN912
22	1	1-35006A	SCREW - PHMS,M4X20 4.8 A2J DIN7985 **
23	1	EAA0364G80A	PREASS. ALU V.S. MOT. INTEGRATED FLANGE INTERF.
24	1	1-6568	COMPRESSION SPRING 1.6 X 10 X 58.5
25	1	1-6468	COMPRESSION SPRING 5 X 63 X 120
26	1	1-17641	WASHER
27	1	EAM0005D12A	DRIVE WHEEL
28	1	1-10477	RETAINING RING FOR BORES J55X2 DIN472
29	1	1-11833	NUT - M8 - X 1.25 DIN 934
30	2	1-17403	MSCR, FLH - M 4 X 25MM
31	1	1-1863	BALL BEARING 6006 ZZE
32	2	1-19903A	MSCR, FLH - M 4 X 65MM
33	2	1-2967	PRETENSION SPRING
35	1	8-3531	MULTIRIB BELT 5 PJ 711 DIN7867
36	1	1-28410	SET SCREW
37	1	1-13077	CIRCLE CLIP SB 92
38	1	6413918	SPRING CENTERING RING SHORT
39	1	6416521	SPRING CASE
40	1	EAM0005D08A	MOTOR PULLEY Y2K
41	1	EAC0058D94A	POLYGON RING
42	2	EAM0005D07A	M10X1 SET SCREW M10X29 "SNAP-ON"

IBP BOX
EAA0338G83A



SYM	REQ	PART NO	DESCRIPTION
1	7	1-13606A	SCREW-PHMS,M4 X 6MM W/ LOCKWASHER
2	1	1-14461A	SPACER M4X50
3	1	2-01429A	CAPACITOR - 10UF, 400V
4	1	2-01529A	CAPACITOR - 20UF, 400V
5	1	2-13258A	MAIN SWITCH
6	2	2-21251A	FUSE-TIME DELAY, 250V, 6.3 AMP
7	1	EAA0369J57A	INLET FILTER ASSY
8	3	5-845	CABLE TIE PLASTIC
9	1	EAL0341J98A	LABEL-BALANCER WARNINGS, EBOX
10	1	8-23762A	LABEL - EARTH SYMBOL
11	2	1-15933A	NUT - HEX, M8 X 1.25 DIN 936, UNI5589
12	1	EAA0346J15A	FRAME ASSY - IBP BAL BOX
13	1	EAC0087G52A	MEMORY CARD
14	2	1-23223A	SCREW-PHMS,M2.9 X 1 X 13MM,TYPE B
15	1	EAL0349G44A	FUSES CAUTION
16	1	EAP0167G30A	MOTORIZED INTEGRATED
17	1	EAS2092G08A	"L" COVER FOR NEW DIG. BOX
18	1	EAW0239D07A	CABLE - GROUNDING
19	1	EAW0240G79A	MAIN CORD
20	1	2-17947A	SOCKET-MULTIPOLE, WAGO

CONES AND ACCESSORIES



ITEM	QTY	PART NUMBER	DESCRIPTION
5	1	EAC0058D07A	CUP - PRESSURE
6	1	EAC0058D08A	DISK - PRESSURE
7	1	EAA0263G66A	QUICK NUT
8	1	EAM0005D40A	WEIGHT - CALIBRATION
9	1	EAM0021D90A	40 MM STUB SHAFT
11	1	EAA0247G21A	CALIPER - RIM WIDTH
12	4	EAC0060G02A	FLANGE - COVER, HOOK
13	4	EAM0006G01A	HOOK - STORAGE
14	1	EAC9958D15A	RUBBER PROTECTOR

4 CONE KIT

EAM0003J08A	CONE,	89-132 MM (3.50 - 5.20 INCHES)
EAM0003J07A	CONE,	71 - 99 MM (3.23 - 3.90 INCHES)
EAM0003J06A	CONE,	56 - 84 MM (2.67 - 3.35 INCHES)
EAM0003J05A	CONE,	43 -63 MM (1.66 - 2.50 INCHES)

7 CONE KIT

EAM0003J64A	CONE - #1, MACHINED	(1.70 - 2.23)
EAM0003J65A	CONE - #2, MACHINED	(2.30 -
EAM0003J66A	CONE - #3, MACHINED	(2.37 -
EAM0003J67A	CONE - #4, MACHINED	(2.73
EAM0003J68A	CONE - #5, MACHINED	(3.07
EAM0003J69A	CONE - #6, MACHINED	(3.42
EAM0003J70A	CONE - #7, MACHINED	(4.210



Snapon Equipment
309 Exchange Ave.
Conway, AR 72032
501-450-1500

Notice: The information contained in this document is subject to change without notice. Snapon Equipment makes no warranty with regard to this material. Snapon Equipment shall not be liable for errors contained herein or for incidental consequential damages in connection with furnishings, performance, or use of this material.

This document contains proprietary information which is protected by copyright and patents. All rights are reserved. No part of this document may be photocopied, reproduced, or translated without prior written consent of Snapon Equipment.