

Snap-on[®]

EEWB305C



WHEEL BALANCER

Parts Manual

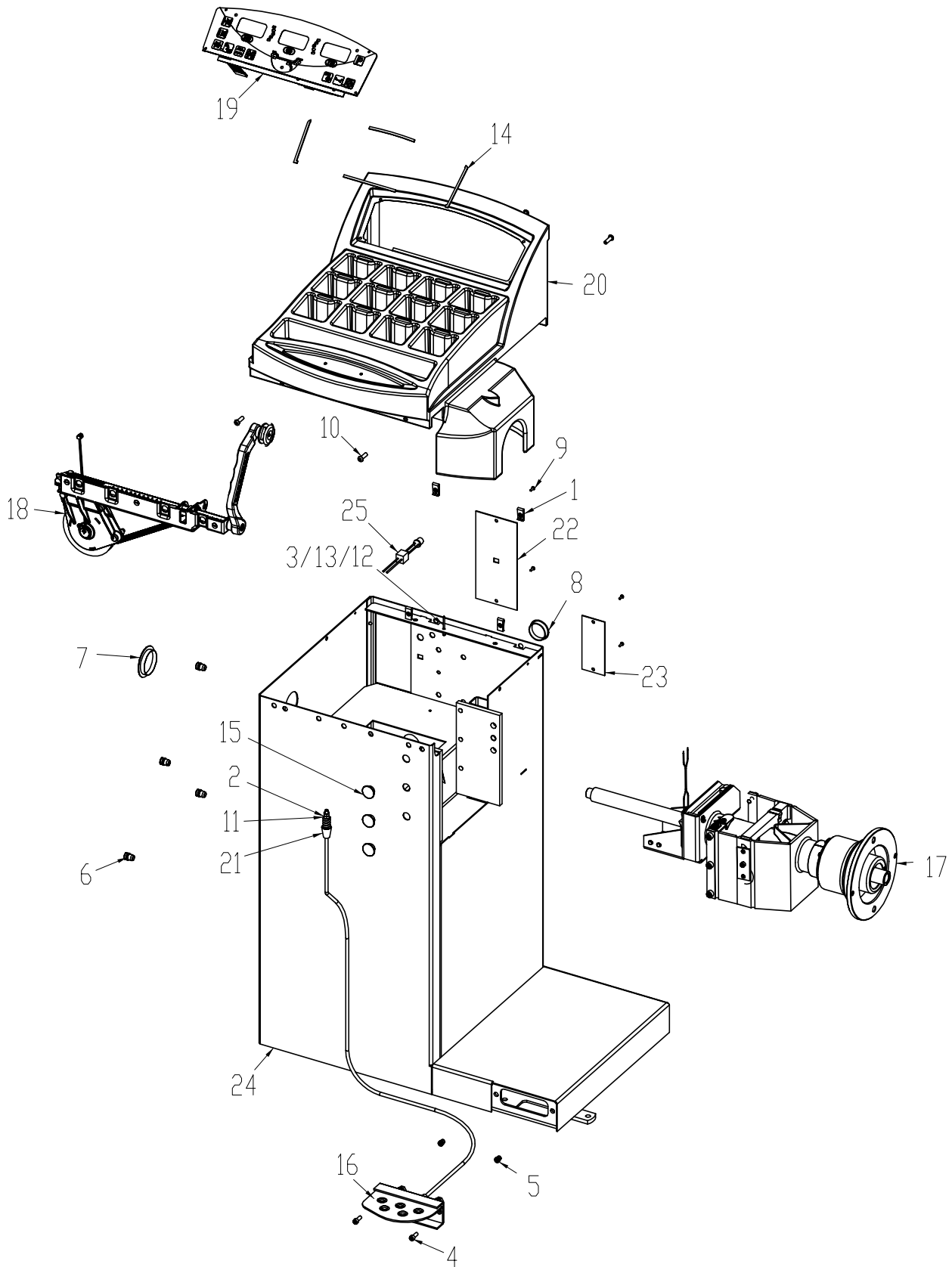
TEEWB305C3

All information contained or disclosed in this document is considered confidential and proprietary by Snap-on Equipment. All manufacturing, use, reproduction, and sales rights are reserved by Snap-on Equipment and the information contained herein shall not be used in whole or in part without the express written consent of Snap-on Equipment.

Table of Contents

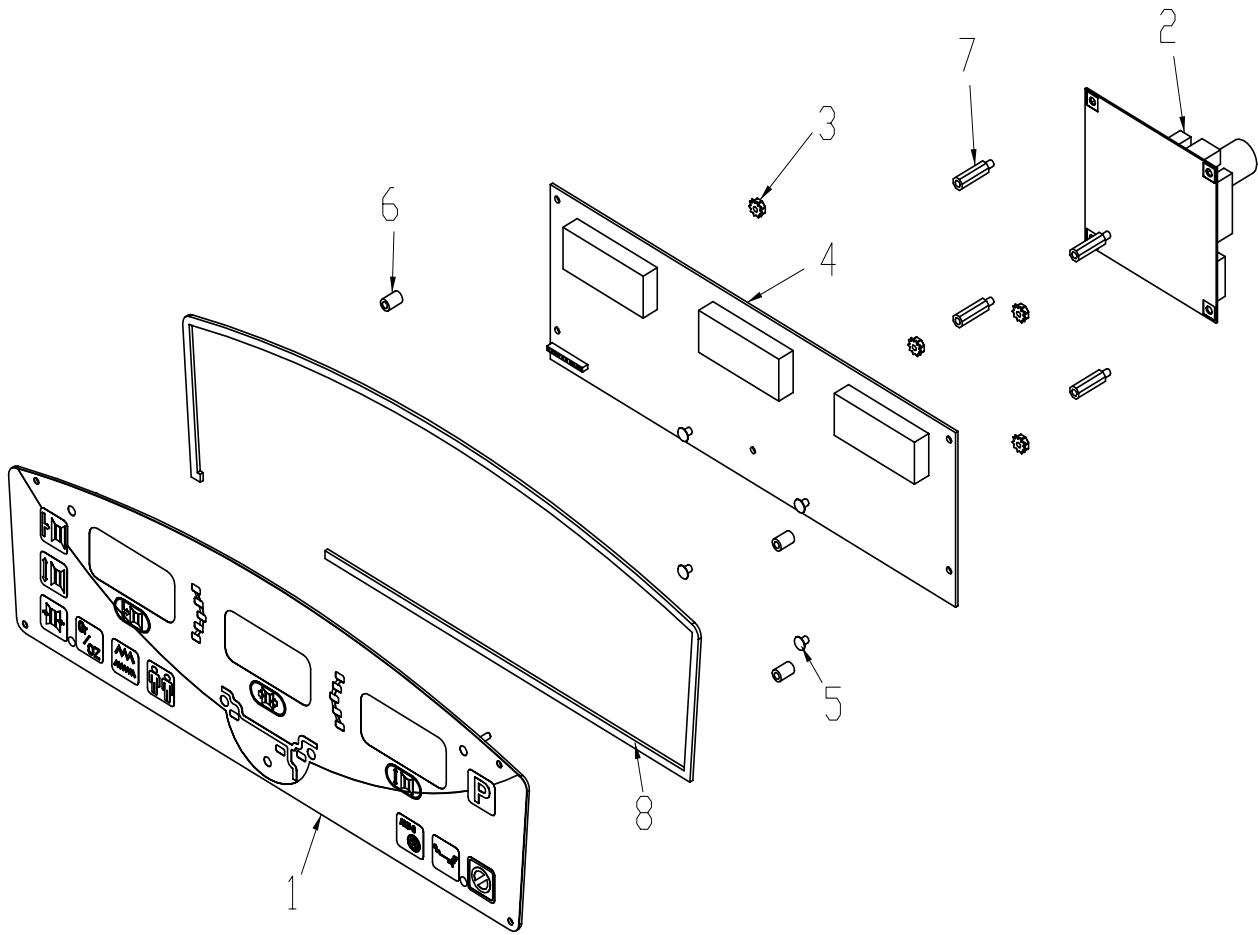
BALANCER ASSEMBLY	2
UPPER DISPLAY	4
1D SAPE ASSEMBLY	5
VIBRATORY ASSEMBLY	6
CONES AND ACCESSORIES.....	7

BALANCER ASSEMBLY



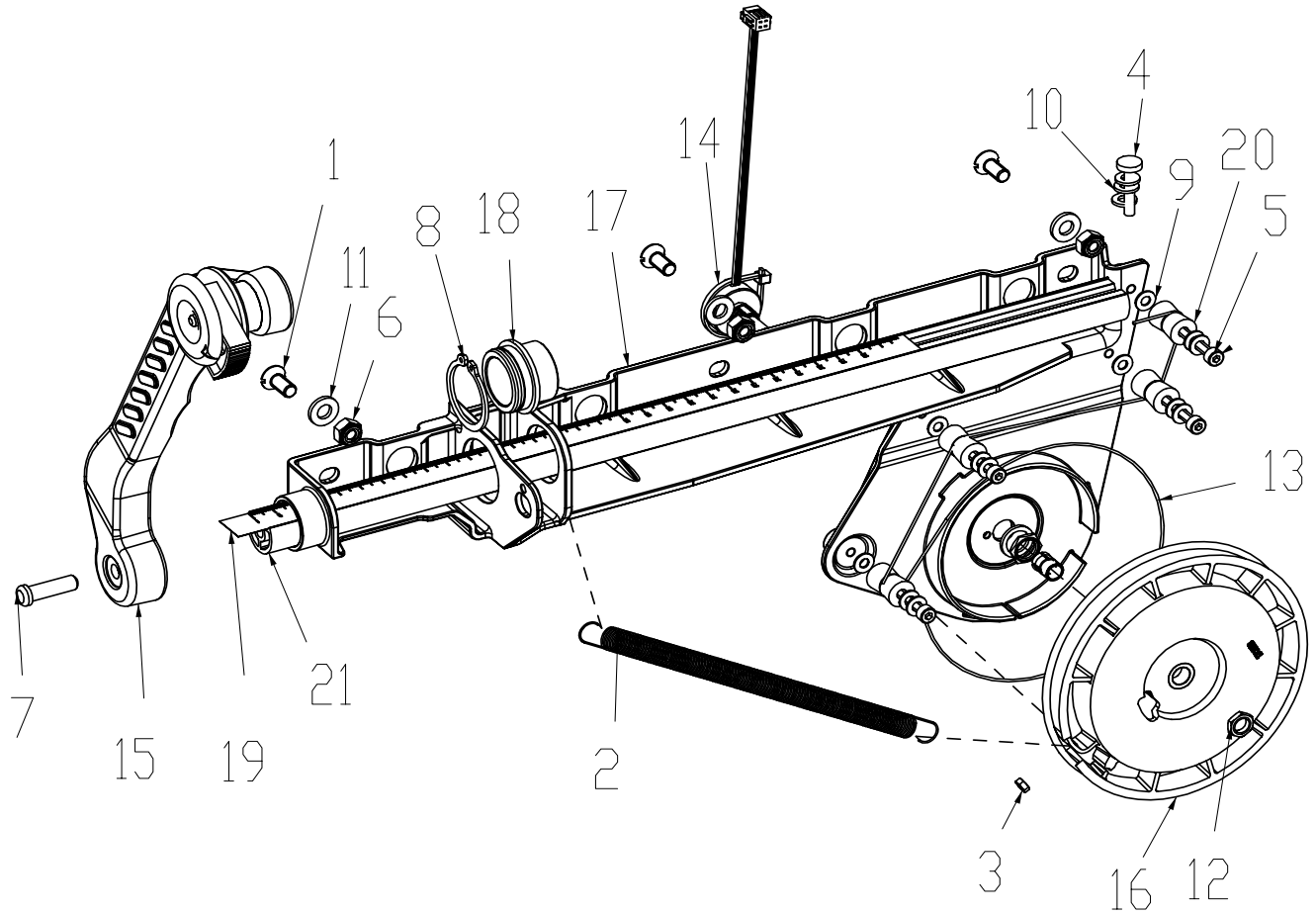
SYM	QTY	PART NO	DESCRIPTION
1	4	1-07439A	NUT - SPEED, "U" TYPE,
2	2	1-11633	NUT-M6 X 5,2MMTHK, BLK
3	1	1-1548	WASHER-EXT,SHAKEPROOF 6MM
4	2	1-16309	SCREW - SHCS, M6 X 16MM,
5	2	1-17559A	NUTSERT - M6
6	4	1-17659A	NUTSERT - M10
7	1	1-2676	PLUG-HOLE, 2"DIA
8	1	1-3176	PLUG,1.50DIA.
9	4	1-3724	SCREW-SELF TAP,5 X 10MM
10	4	1-44009A	SCREW-BHCS, 1/4-20 X 7/8
11	1	1-6668	COMPRESSION SPRING
12	1	1-7558	POP RIVET-3/16"
13	1	2-23201	TERMINAL LUG-6.3MM X .8MM POP RIVET
14	1	5-8426A2-01	STRAP-1/4 INCH BLACK VELCRO (LOOP)
15	3	8-7216	PLUG-HOLE, 16MM DIA
16	1	EAA0263G07A	ASSY-BRAKE PEDAL
17	1	EAA0332G65A	VIBRATOR HAND INT.FLANGE
18	1	EAA0346J28A	ASSY - SAPE JB VPI 1D, S1
19	1	EAA0346J34A	ASSY - DISPLAY, SO, HAND SPIN
20	1	EAC0053J00A	WEIGHT TRAY- SNAP-ON HANDSPIN
21	1	EAC0053J15A	BRAKE SPACER
22	1	EAS2021J04A	PANEL-COVER, ELEC ACCESS
23	1	EAS2021J05A	PANEL-COVER,GUARD ACCESS
24	1	EAS2081J95A	CABINET - S1 RED SPRAYED
25	1	EAW0240G08A	HARNESS-INPUT, POWER SUPPLY

UPPER DISPLAY



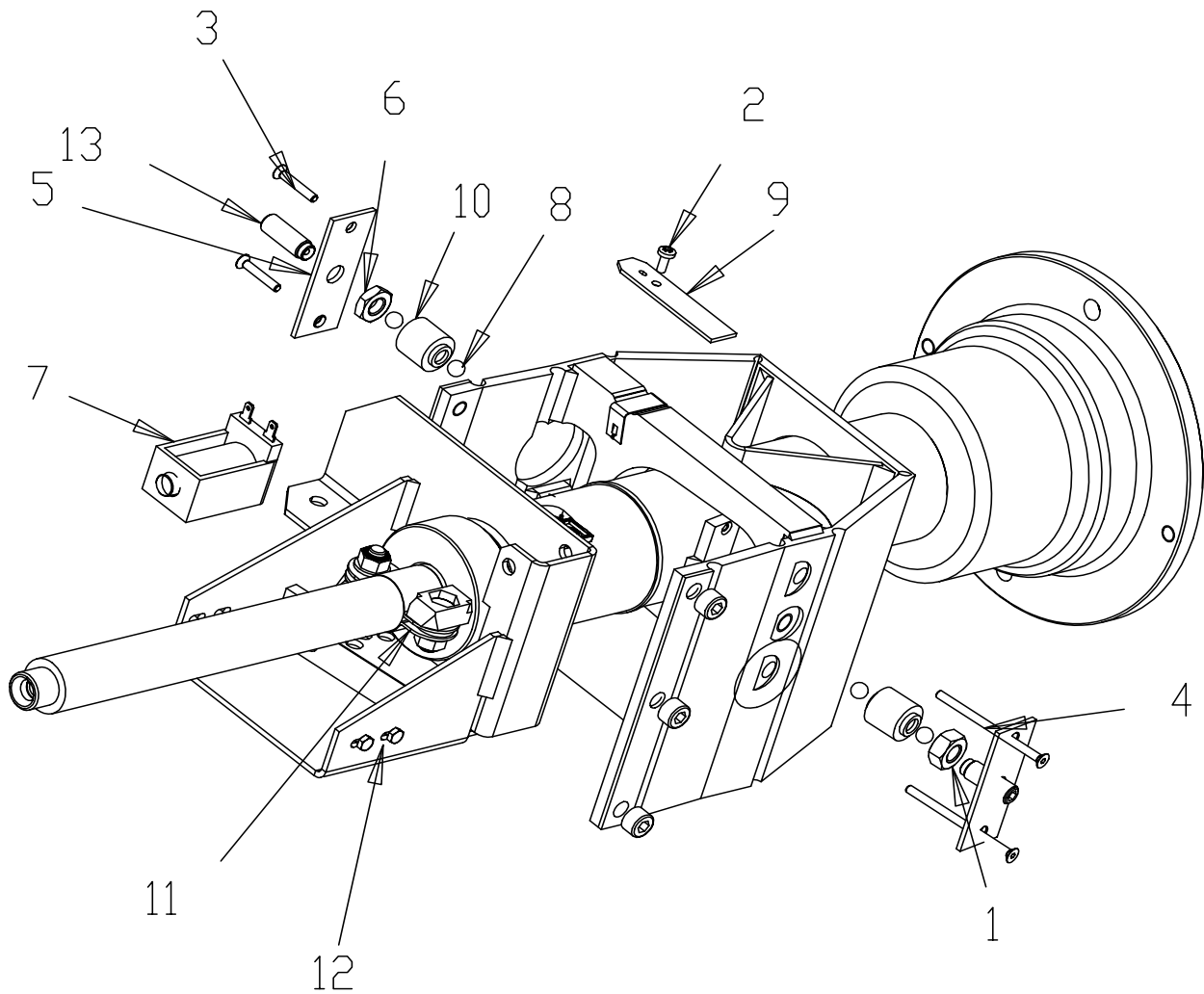
SYM	QTY	PART NO	DESCRIPTION
1	1	EAA0346J21A	DISPLAY- PANEL/MEMBRANE
2	1	EAP0167G40A	HANDSPIN INTEGRATED
3	9	1-15033	NUT-KEPS, M3 - .5
4	1	EAP0201D00C	PCB ASS'Y-DISPLAY, JB VPI SYS III
5	4	1-23006	SCREW-PHMS,M3-.5 X 6MM
6	5	1-11062A	SPACER- 1/4" X 3/8"
7	4	1-8361	SPACER-HEX,M3-.5 X 19 THREADED,M/F
8	1	5-8426A1	STRAP - 1/4 INCH BLACK VELCRO (HOOK)

1D SAPE ASSEMBLY
EAA0346J28A



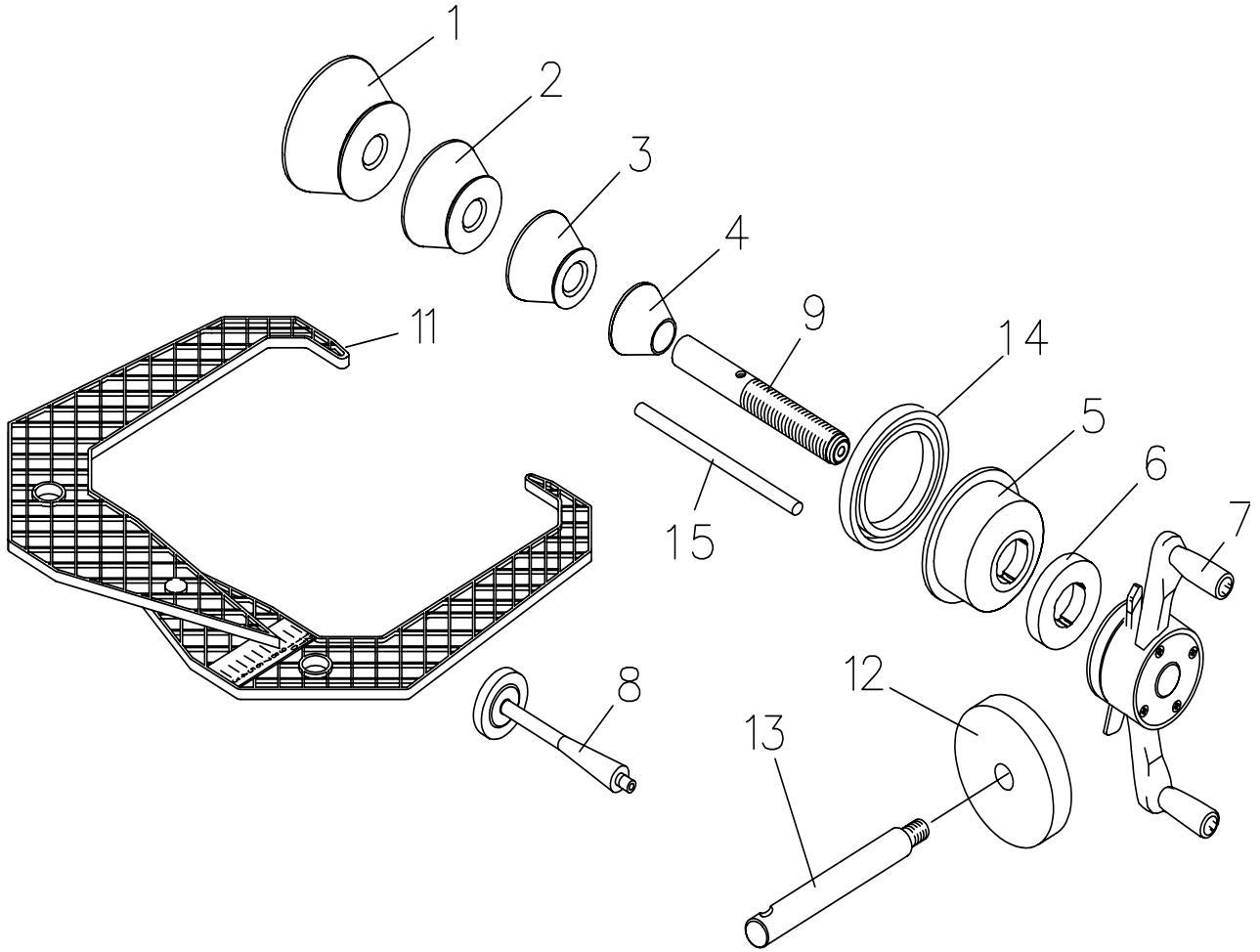
SYM	QTY	PART NO	DESCRIPTION
1	3	1-03405A	MSCR, OVAL HD M 6 X 14MM
2	1	1-06567A	STAND SAPE TENSION SPRING
3	1	1-11233	NUT - HEX, M3 DIN 934
4	1	1-13609	SCREW-HHCS,M4-16 X 8.8
5	4	1-13909	SCR - HEX SKT HD CAP (M4 X 30MM)DIN912
6	3	1-16633A	NUT,SELF LOCK. ALL-METAL M6 A2J
7	1	1-3824	SCREW-SELF TAP,6 X 12MM
8	1	1-4777	RETAINING RING FOR SHAFT UNI7435
9	12	1-9641	PLAIN WASHER D4MM
10	3	1-9741	WASHER-FLAT, M5 X 10.0OD X 1MM THK
11	3	1-9841	WASHER PLAIN, 6MM
12	1	2-07657A	CLAMPING DEVICE W/NUT
13	1	6-00504A	ROPE HEMINGWAY
14	1	EAA0266D20A	ROTATIVE TRANSDUCER 100HM
15	1	EAA0346J26A	ASSY - SAPE ARM W/ EJECTOR
16	1	EAC0058D06A	RIEMENHALTEROLLE MIT EINLEGETEIL
17	1	EAC0087G59A	STAND. S1 SAPE SUPPORT
18	1	EAC0087G70A	STANDARD. S1 SAPE BUSHING
19	1	EAL0349G31A	DISTANCE SCALE
20	4	EAM0005D35A	REEL-GUIDING,SAPE
21	1	EAM0053G16A	STANDARD. ROD SAPE, S1

VIBRATORY ASSEMBLY



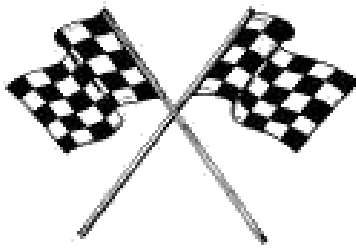
REF	QTY	PART NUMBER	DESCRIPTION
1	1	1-11833	NUT M8
2	1	1-13204A	SCREW
3	2	1-17403	SCREW
4	2	1-19903A	4 X 65 COUNTER SUNK SCREW
5	2	1-2967	PRETENSION SPRING
6	1	1-4034	NUT HEX BM (M 10)
7	1	2-09337A	SOLENOID STOP
8	4	8-1144	STEEL BALL
9	1	EAA0344G00A	ENCODER
10	2	EAA0260D59A	PIEZO
11	1	EAA0263G26A	BRAKE
12	1	EAA0263G26A	BRAKE
13	2	EAM0005D07A	SET SCREW M10 X 29

CONES AND ACCESSORIES



ITEM	QTY	PART NUMBER	DESCRIPTION
1	1	EAM0003J08A	CONE, 89-132 MM (3.50 - 5.20 INCHES)
2	1	EAM0003J07A	CONE, 71 - 99 MM (3.23 - 3.90 INCHES)
3	1	EAM0003J06A	CONE, 56 - 84 MM (2.67 - 3.35 INCHES)
4	1	EAM0003J05A	CONE, 43 -63 MM (1.66 - 2.50 INCHES)
5	1	EAC0058D07A	CUP - PRESSURE
6	1	EAC0058D08A	DISK - PRESSURE
7	1	EAA0263G66A	QUICK NUT
8	1	EAM0005D40A	WEIGHT - CALIBRATION
9	1	EAM0021D90A	40 MM STUB SHAFT
11	1	EAA0247G21A	CALIPER - RIM WIDTH
12	4	EAC0060G02A	FLANGE - COVER, HOOK
13	4	EAM0006G01A	HOOK - STORAGE
14	1	EAC9958D15A	RUBBER PROTECTOR
15	1	EAM0005D34A	FASTENING ROD

Snap-on



Notice: The information contained in this document is subject to change without notice. Snapon Equipment makes no warranty with regard to this material. Snapon Equipment shall not be liable for errors contained herein or for incidental consequential damages in connection with furnishings, performance, or use of this material.

This document contains proprietary information which is protected by copyright and patents. All rights are reserved. No part of this document may be photocopied, reproduced, or translated without prior written consent