

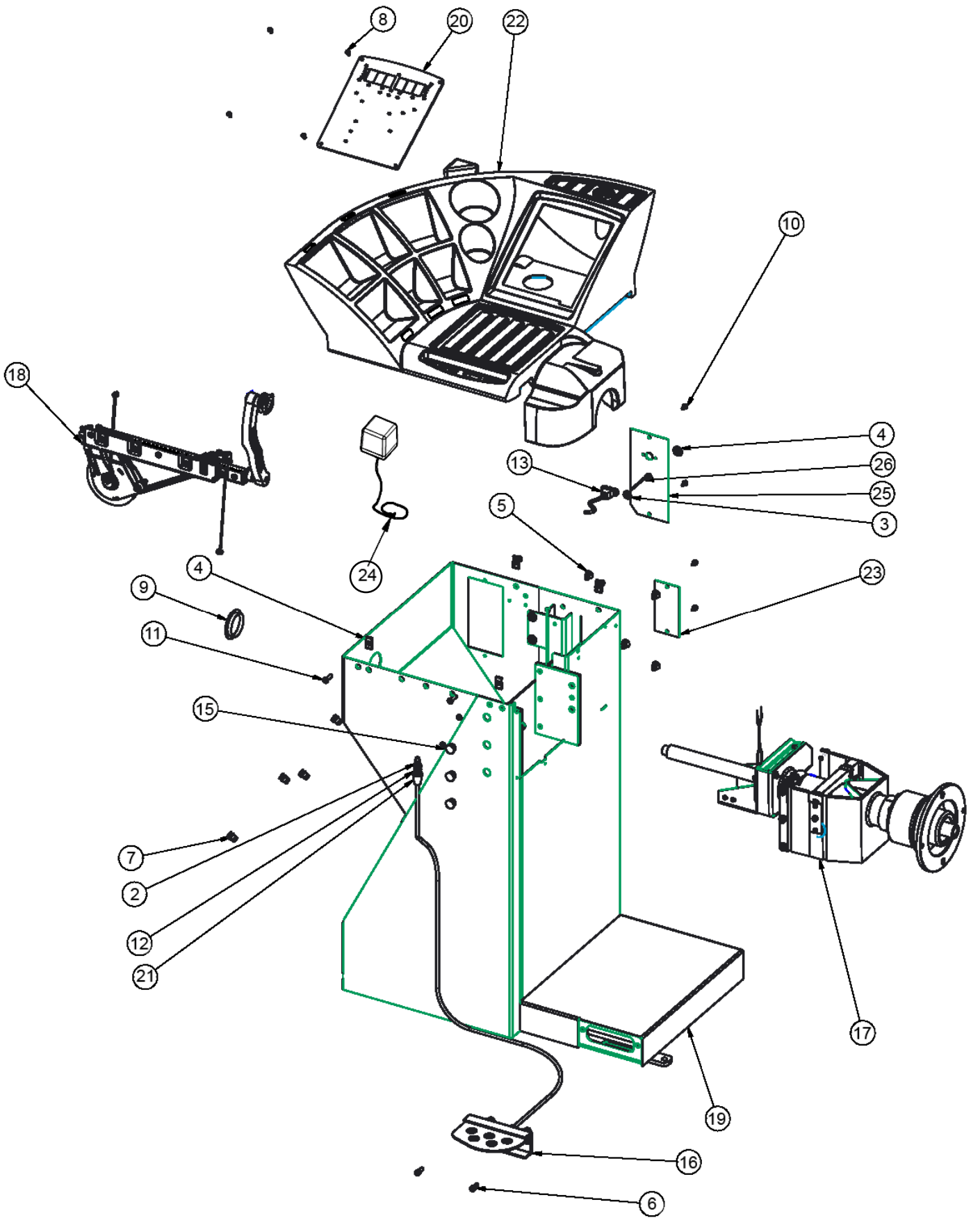
# *Snap-on*<sup>®</sup>



EEWB330B HAND SPIN WHEEL BALANCER PARTS MANUAL

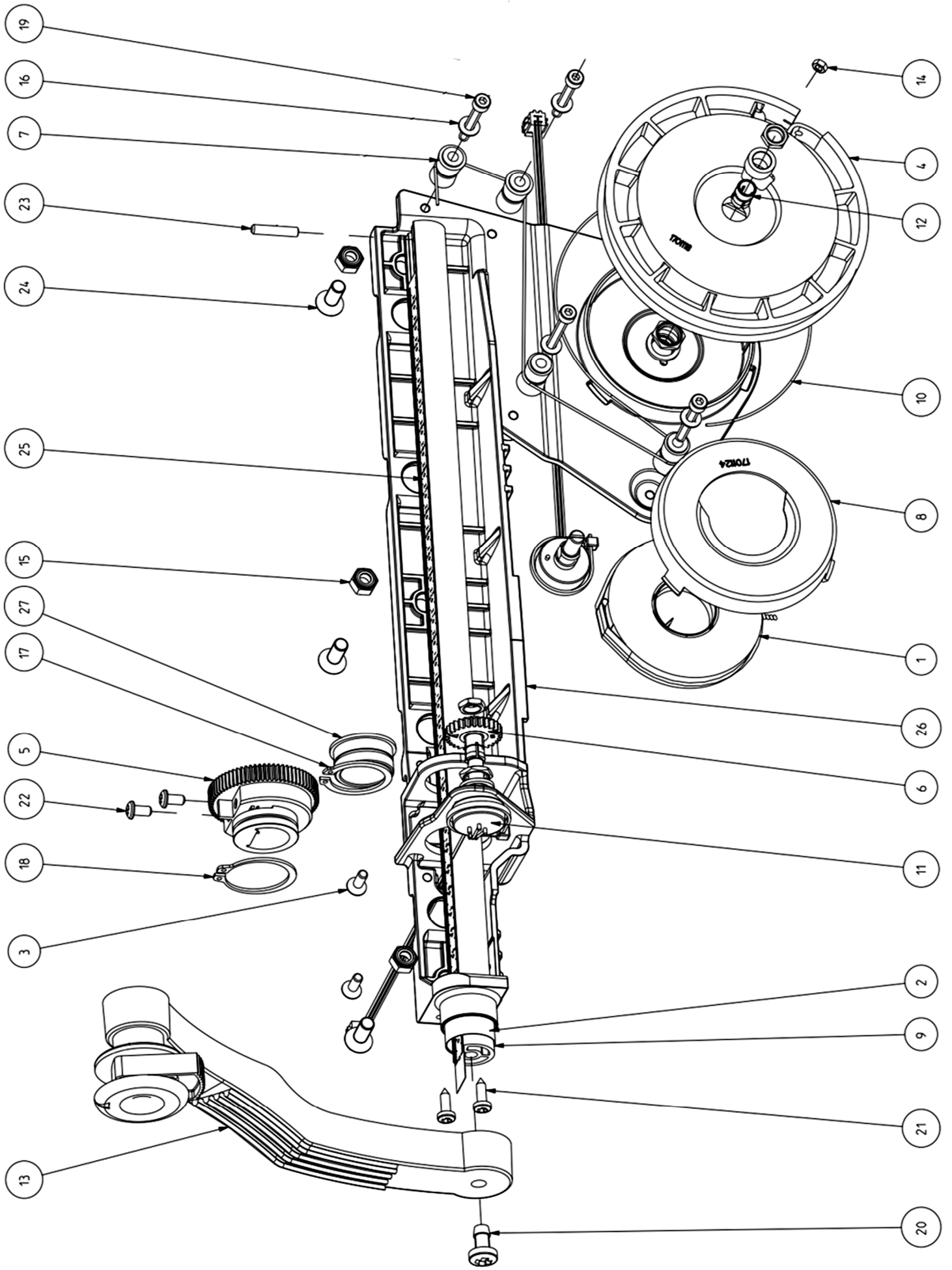
**EEWB330B B.O.M.**

<b>PART NUMBER</b>	<b>DESCRIPTION</b>
EAA0423J42A	ASSY BAL-SO HAND SPIN
7-16701A	ADAPTOR AC 9V 1.8A29261
2-3657	CABLE CLAMP (FLAT CABLE)
ZEEWB330B9	LIT PACK-SO HANDSPIN
EAL0341J96A	LABEL-BALANCER WARNING REAR
EAL0341J97A	LABEL-BALANCER WARNING SIDE
EAL0341J63A	LABEL-PATENT
EAL0343J76B	SERIAL LABEL DOCUMENT
EAL0352J20A	DECAL SNAP-ON 9" WHITE VINYL
EAL0352J19A	DECAL SNAP-ON S WHITE VINYL
EAA0247G21A	WHEEL CALIPERS
EAA0263G79A	QUICK NUT KIT
EAK0309J28A	KIT - 4 CONE
EAL0420J53A	LABEL-CAUTION MAX WHEEL DIA
EAC0058D68A	SPACER, 29660
EAM0005D40A	CALIBRATION WEIGHT
EAM0006G01A	PIN CONE STORAGE
EAC0060G02A	FLANGE WSHR CONE STORAGE
WWPR13A	PLIER WEIGHT SNAPON

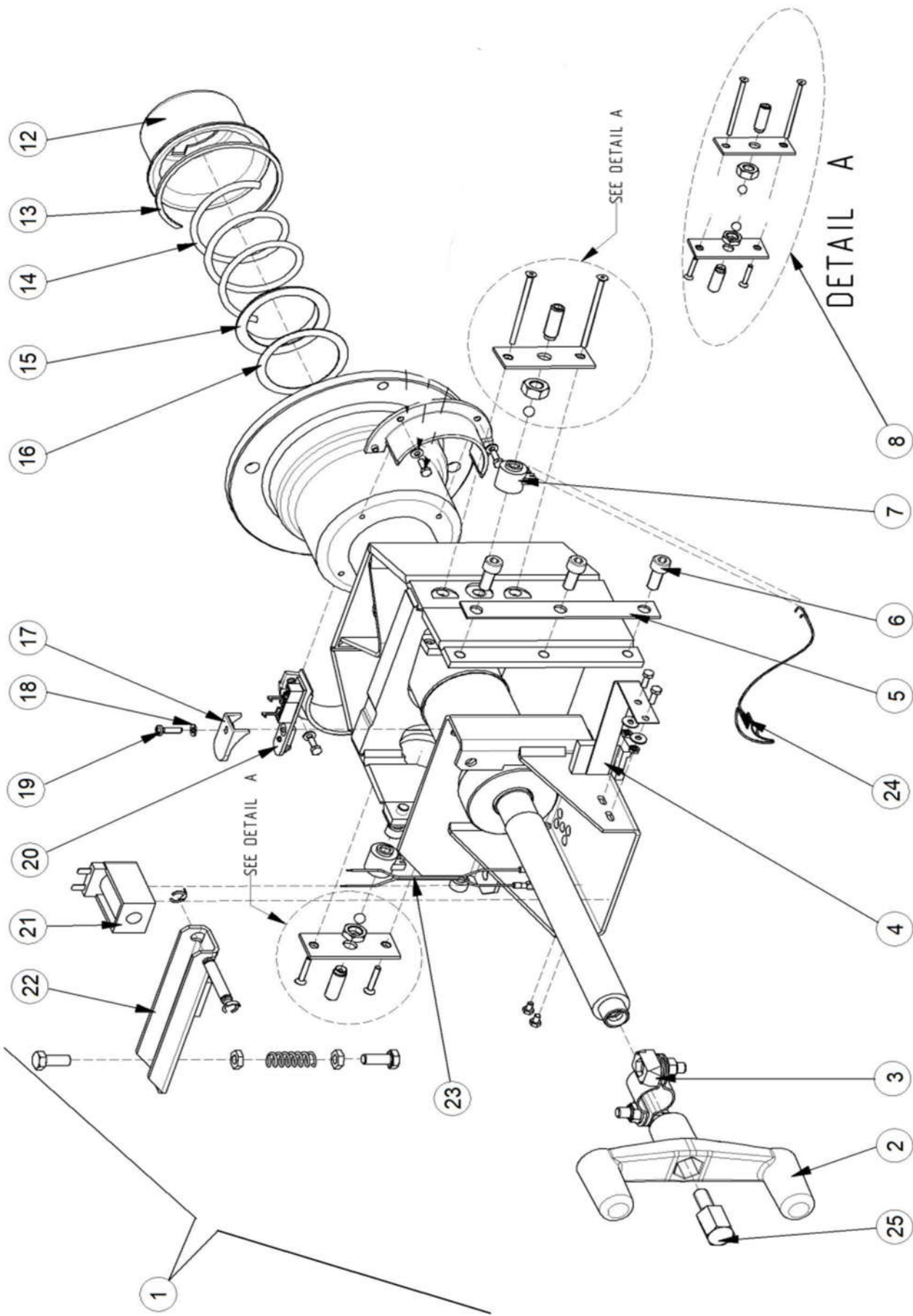


REF#	QTY	PART NUMBER	DESCRIPTION
1	4	1-07439A	NUT-TINNERMAN 1/4-20
2	2	1-11633	NUT M6 X 5, 2MM THK BLK
3	1	1-12944A	SPACER PULLY .62 OD X .13 LG
4	1	1-14944A	WASHER-NYLON SHOULDER .358 ID
5	2	1-08176A	PLUG-HOLE-16 7MM DIA-25838
6	2	1-16309	SCREW - SHCS M6 X 16MM
7	4	1-17659A	NUTSERT-M10
8	4	1-18523A1	SCREW-PH PAN TP M4, 8 X 13 BLK
9	1	1-2676	PLUG-HOLE 2 DIA BLACK
10	4	1-3724	SCREW-M5 X 10 THREAD FORMING
11	4	1-44009A	SCREW-BHCS-1/4X7/8 91255A541
12	1	1-6668	SPRING COMPRESSION
13	1	6-14722A	CABLE PANEL MT USB TYPE B LONG
15	3	8-7216	PLUG-HOLE 16MM
16	1	EAA0263G07A	BRAKE PEDAL ASSY
17	1	EAA0332G65A	VIBRATORY HAND SPIN-4029414
18	1	EAA0471G16A	S2 SAPE 1D-2D ASSY
19	1	EAA0423J53A	BALANCER CABINET SMALL RED
20	1	EAA0470G14A	CR SO DISPLAY PANEL ASSY
21	1	EAC0053J15A	BRAKE SPACER
22	1	EAA0481G13A	WEIGHT TRAY
23	1	EAS2021J05A	PANEL-COVER WHEEL ACCESS HOLE
24	1	7-16701A	ADAPTOR AC 9V 1.8A29261
25	1	EAS2118J57A	PANEL-COVER ELEC ACCESS
26	1	EAW0233J48A	CABLE ASM POWER HAND SPIN

EAA0471G16A

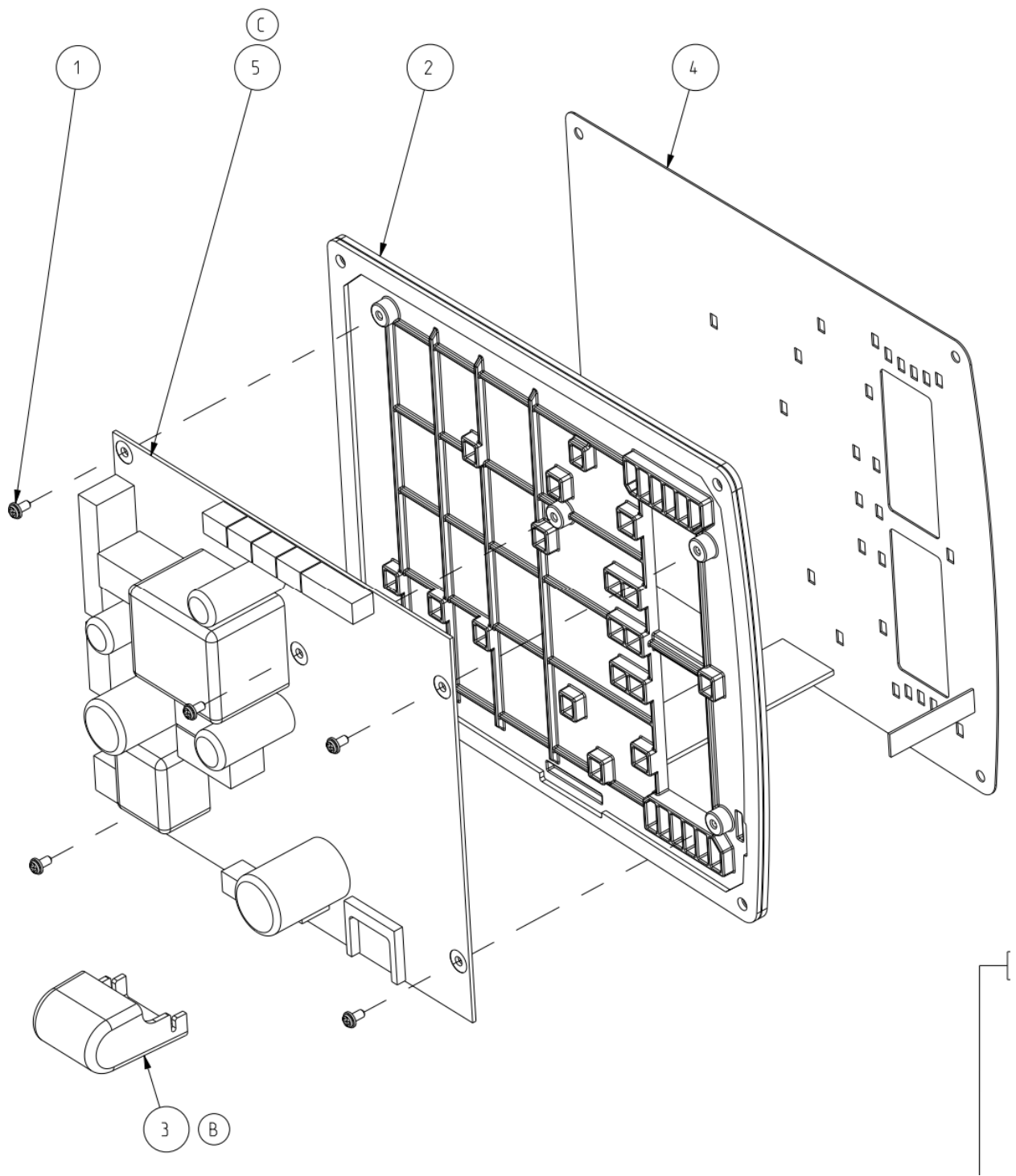


REF#	QTY	PART NUMBER	DESCRIPTION
1	1	1-08167A	SPIRAL SPRING TH .3MM
2	1	1-13865A	BUSHING
3	2	1-17726A	SCREW TPS 3.9X13
4	1	EAC0058D06A	REEL - ROPE 290MM
5	1	EAC0058D12A	COG WHEEL 56 TOOTH
6	1	EAC0058D13A	COG WHEEL 28 TOOTH
7	4	EAM0005D35A	GUIDE REEL
8	1	EAC0058D58A	COVER-SAFETY
9	1	EAM0053G16A	STANDARD. ROD SAPE, S1
10	1ft	6-00604A	ROPE-SPECTRA 1000-150LB
11	2	EAA0266D20A	POTENTIOMETER WITH CABLE
12	2	2-07657A	CLAMPING DEVICE W/NUT-4025655
13	1	EAA0277D94A	SAPE ARM EURO W/EJECTOR
14	1	1-11233	NUT-HEX M3 DIN 934
15	3	1-9933	NUT-M6 ZINC
16	4	1-9641	WASHER PLAIN -7021232/1641040
17	1	1-4577	SNAP RING-25 X 1.20
18	1	1-13377A	CIRCLIP - 27 X 1.20
19	4	1-13909	SCREW-HSHCS M4 X 30
20	1	1-3824	THREADFORMING SCREW C-M 6 X 12
21	2	1-22623A	SCREW-PH PN H TAP 3.9X13 A2J C
22	2	1-11726A	SCREW-PHPH 4 MM X 8
23	1	1-7810	SCREW SET M4X20 FLAT TIP
24	1	1-22003A	SCREW 6 X 16 10K
25	1	EAM0086G85A	DECAL DISTANCE GAUGE
26	1	EAM0125G68A	SAPE SUPPORT FOR S CABINET
27	1	EAM0181G36A	BUSHING ALU SAPE

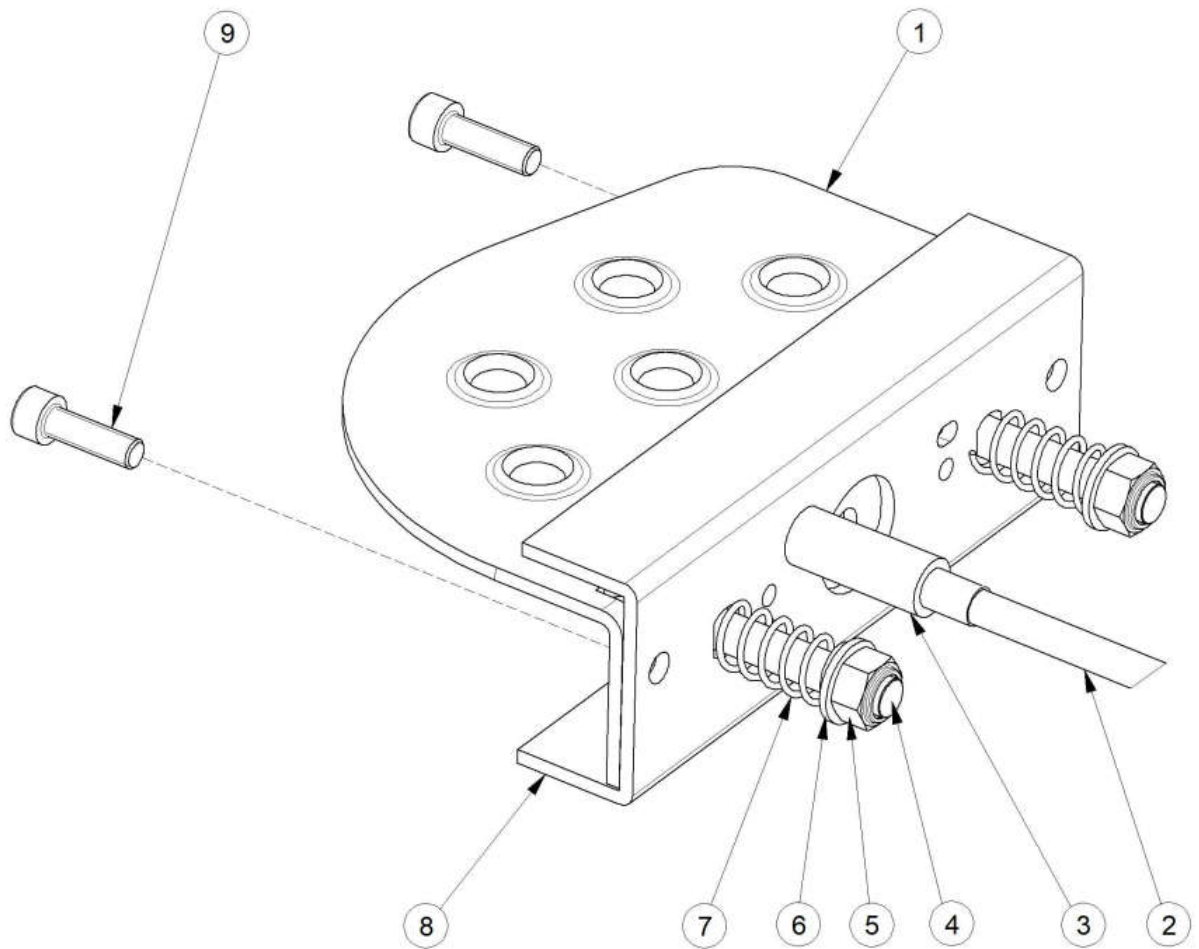


REF#	QTY	PART NUMBER	DESCRIPTION
1	1	EAA0332G65A	VIBRATOR HAND INT.FLANGE
2	1	EAC0054P14A	HANDLE,FRENCH (M/C MODELS ONLY)
3	1	EAA0263G25A	ASSY.BRAKE (INCL BELOW)
INC	2	EAS2067G50	BRAKE BAND
INC	2	EAC0060G39A	BRAKE BAND PAD
INC	3	1-10041	WASHER D.8
INC	1	EAC0060G40A	POLYURETHANE WASHER
INC	2	1-10033	HEX NUT M8
INC	2	1-32701A1	SCREW, HEX HEAD M8X25
4	1	EAA0263G26A	BRAKE ASSEMBLY
5	2	EAS2025D03A	SPACER FOR VIBRATORY SYSTEM
6	6	1-17709	SCREW TCEI 8X20 8G
7	2	EAA0260D59A	TRANSDUCER
8	1	EAA0328G16A	TRANSDUCER FIXING UNIT (INCL BELOW)
INC	4	8-1144	STEEL BALL 8 M
INC	2	1-6568	COMPRESSION SPRING 1.6 X 10 X 58.5
INC	2	EAM0005D07A	SETSCREW HEX SOCKET M10X1X29
INC	1	1-04634A	NUT HEX LOW M10X1 8-A2J ISO 8675 EN 28675
INC	2	1-17403	SCREW HEX SOCKET COUNT.H M4X25 8.8-A2J
INC	2	1-19903A	SCREW HEX SOCKET COUNT.H M4X65 8.8-A2J
INC	1	1-11833	HEXAGON NUT B M10 X 1 -8-A2J
9	4	1-27401	SCREW, HEX HEAD MACHINE M4X12 - 8.8-A2J
10	5	1-9641	WASHER
11	2	EAC0087G72A	VS MOT. INT. FL. BEARING PROTECTION
12	1	EAS2025D14A	SPRING GUIDE
13	1	1-13077	CIRCLIP
15	1	EAC0058D14A	SPRING CENTRING RING
16	1	1-18241A	WASHER 55X68X0.5
17	1	EAC0087G54A	ENCODER BOARD PROTECTION
18	5	1-9641	WASHER
19	1	1-13404A	SCREW - PHMS M4X16
20	1	EAA0344G00A	OPTO-ELECTRONIC UNIT
21	1	2-09337A	SOLENOID
22	1	EAA0260D11A	BRAKE LEVER ASSY
23	1	EAW0239D04A	SOLENOID CONNECTION CABLE
24	1	EAW0240G67A	CABLE WITHOUT TEMP. SENSOR
25	1	EAM0006G16A	BOLT (M/C MODELS ONLY)

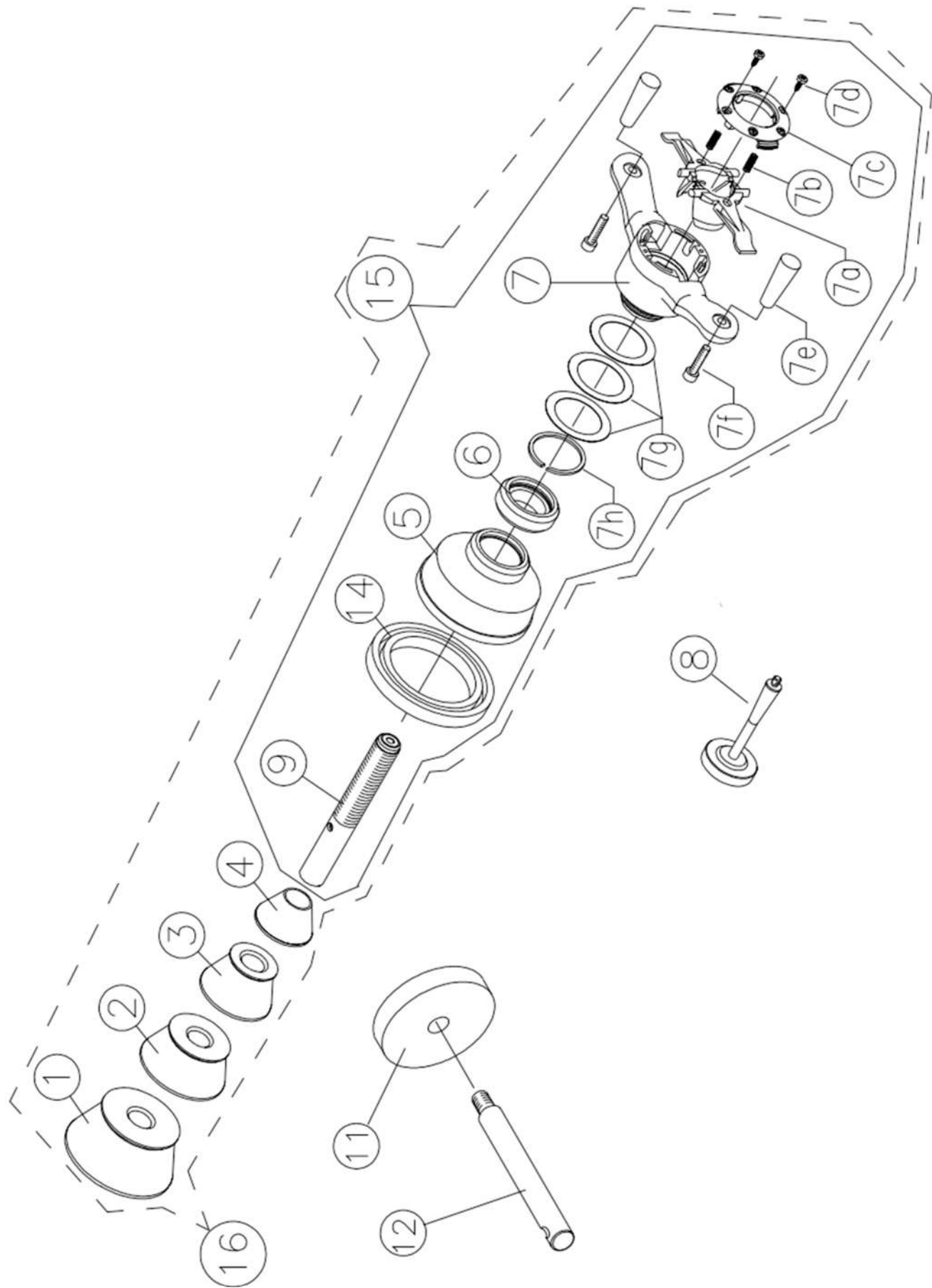




REF#	QTY	PART NUMBER	DESCRIPTION
1	5	1-17226A	SCREW FOR PLAST. PHIL.PAN H. D.3X6
2	1	EAA0457G16A	PANEL KEYBOARD SUPPORT ASSEMBLY
3	1	EAC0127G62A	FLAT CABLE PROTECTION
4	1	EAL0462G57A	FLAT KEYBOARD SNAP-ON
5	1	EAP0314G70A	ELECTRONIC BOARD JB HANDSPIN



REF#	QTY	PART NUMBER	DESCRIPTION
1	1	EAS2020P20A	PEDAL-BRAKE JBEG
2	1	EAA0344G15A	QR CABLE-BRAKE PEDAL 0032324
3	1	EAM0053G06A	SPACER-BRAKE CABLE 0032322
4	2	1-18209	SHCS-M8 X 45
5	2	1-10033	NUT-ESNA M8
6	2	1-10041	WASHER, PLAIN M8
7	2	1-06768A	SPRING COMPRESSION D187
8	2	EAS2027G18A	SUPPORT-BRAKE PEDAL
9	2	1-16309	SCREW - SHCS M6 X 16MM



REF#	QTY	PART NUMBER	DESCRIPTION
1	1	EAM0003J69A	CONE (3.42 - 5.25)
2	1	EAM0005D25A	CONE 96-114MM/3.8-4IN
3	1	EAM0005D24A	CONE 71-99MM/2.8-3.9IN 25518
4	1	EAM0005D23A	CONE (1.70 - 3.15)
5	1	EAC0058D07A	CUP-PRESSURE,HAWEKA
6	1	EAC0058D08A	DISK PRESSURE
7	1	EAA0263G79A	QUICK NUT KIT
A	2	7409019-020	CLAMP JAWS SET
B	2	1611128	DISC, SPRING
C	2	EAC0060G23A	COVER
D	1	ST7417071	SCREW
E	2	ST0027008	HANDLE
F	2	1-18009A	SCREW-SHCS M8 X 35
G	3	ST0027005	SPACER
H	1	ST7022499	C - CLIP
8	1	EAM0005D40A	CALIBRATION WEIGHT
9	1	EAM0021D90A	40 MM STUB SHAF
14	1	EAC0058D15A	RUBBER RING
15	1	EAA0263G79A	QUICK NUT KIT
N/S	1	EAA0263G66A	WING NUT
N/S	1	124-405-006	STEEL WING NUT KIT
N/S	1	WWPR13A	PLIER WEIGHT SNAPON
N/S	1	EAA0247G21A	WHEEL WIDTH GAUGE



Notice: The information contained in this document is subject to change without notice. Snap-on Equipment makes no warranty with regard to this material. Snap-on Equipment shall not be liable for errors contained herein or for incidental consequential damages in connection with furnishings, performance, or use of this material.

This document contains proprietary information which is protected by copyright and patents. All rights are reserved. No part of this document may be photocopied, reproduced, or translated without prior written consent