

**Snap-on**<sup>®</sup>

**EEWB331A**



***WHEEL BALANCER***

***Parts Manual***

TEEWB331A3

All information contained or disclosed in this document is considered confidential and proprietary by Snap-on Equipment. All manufacturing, use, reproduction, and sales rights are reserved by Snap-on Equipment and the information contained herein shall not be used in whole or in part without the express written consent of Snap-on Equipment.

# Table of Contents

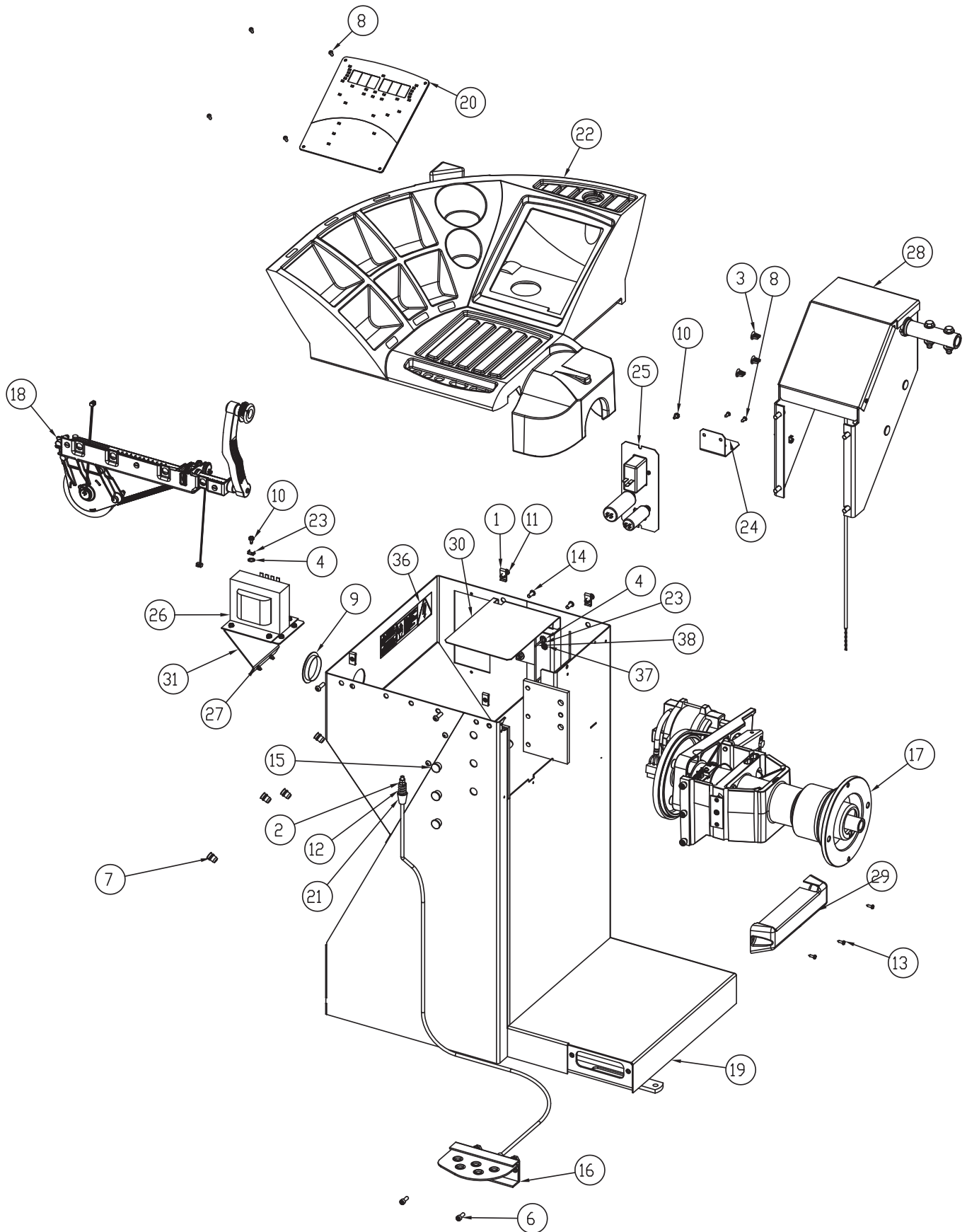
BOM - EEWB331A .....	3
BALANCER ASSEMBLY .....	4
UPPER DISPLAY .....	6
2D SAPE ASSEMBLY .....	7
VIBRATORY ASSEMBLY .....	8
CONES AND ACCESSORIES.....	9
WHEEL GUARD SUPPORT.....	10
HOOD ASSEMBLY .....	12



BOM - EEWB331A

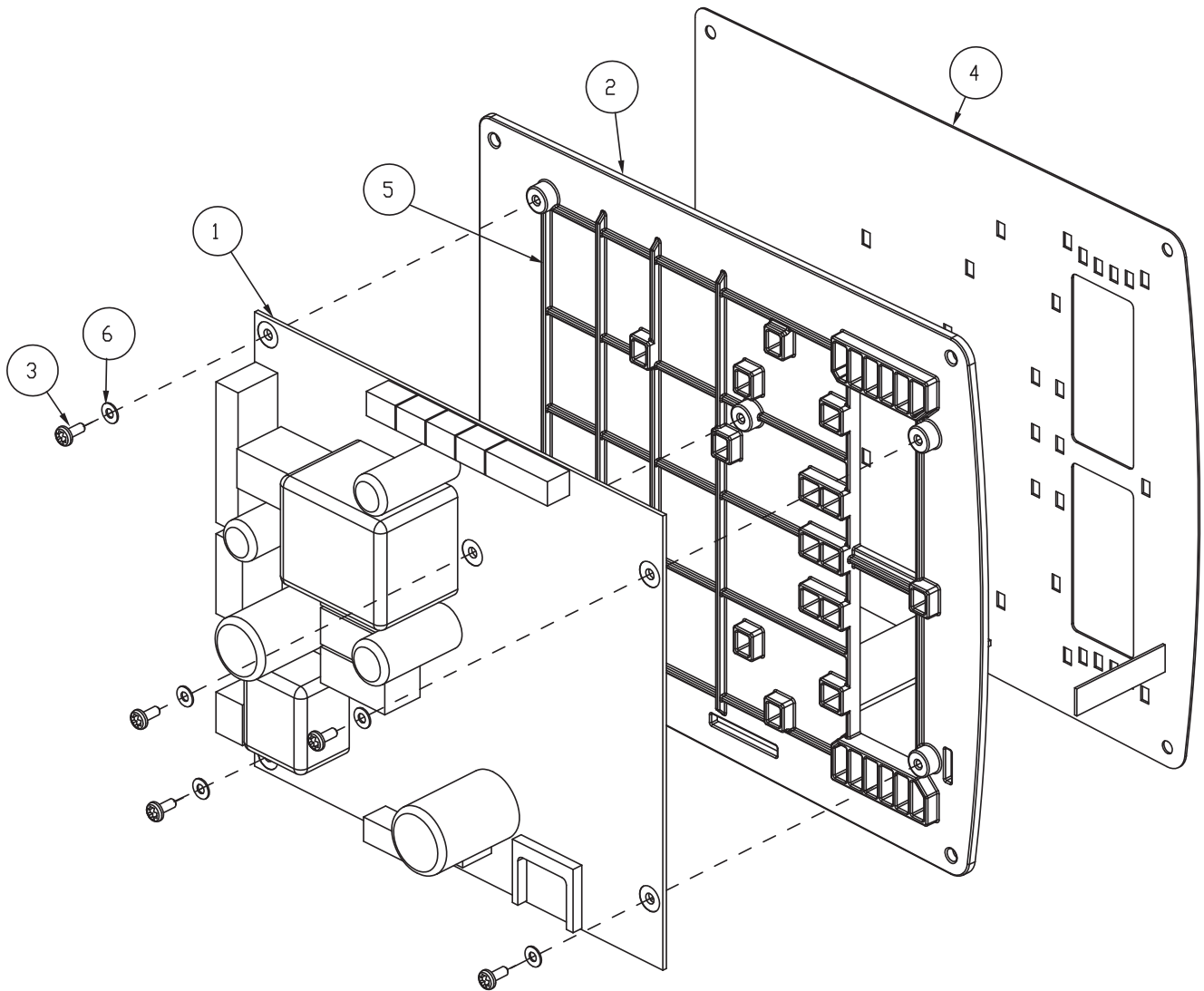
<b>QTY</b>	<b>PART NUMBER</b>	<b>DESCRIPTION</b>
1	EAA0369J80A	BAL ASSY – SNAPON MOTORIZED DIGITAL
1	EAA0369J54A	42” HOOD ASSY NO SONAR
1	EAX0039J00A	115V AC POWER CORD
4	2-3657	CABLE CLAMP (FLAT CABLE)
3	1-01215A	SCREW - LAG, 5/16 X 1 ½
3	1-541	WASHER - FLAT, 5/16
1	ZEEWB331A9	LIT PACK - SNAP-ON HAND SPIN
1	EAL0341J96A	LABEL – BALANCER WARING, REAR
1	EAL0341J97A	LABEL – BALANCER WARING, SIDE
1	EAL0341J60A	LABEL - PATENT, WHEEL BALANCER
1	EAL0343J76B	LABEL-ELECTRICAL/SERIAL
1	EAL0352J20A	LABEL - SNAP-ON, WHITE
1	EAL0352J19A	LABEL – SNAP-ON BIG S
1	EAL0420J33A	LABEL - CAUTION MAX DIAM AND WEIGHT
1	EAA0263G79A	QUICK NUT KIT, 40MM
1	EAK0309J28A	KIT – 4 CONES
1	EAM0005D40A	CALIBRATION WEIGHT
4	EAM0006G01A	HOOK - ACCESSORY STORAGE
4	EAC0060G02A	FLANGE - COVER, ACCESSORY HOOK
1	58839000	WEIGHT TOOL
1	EAA0247G21A	CALIPER - RIM WIDTH

# BALANCER ASSEMBLY



SYM	REQ	PART NO	DESCRIPTION
1	6	1-07439A	NUT - SPEED, "U" TYPE,
2	2	1-11633	NUT-M6 X 5,2MMTHK, BLK
3	3	1-08176A	CAP,CLOSING
4	2	1-1548	WASHER-EXT,SHAKEPROOF 6MM
5	4	1-18359A	NUTSERT, M8
6	2	1-16309	SCREW - SHCS, M6 X 16MM,
7	4	1-17659A	NUTSERT - M10
8	6	1-18523A1	SELF TAPPING SCREW D4,8X13MM
9	1	1-2676	PLUG-HOLE, 2"DIA
10	8	1-3724	SCREW-SELF TAP,5 X 10MM
11	4	1-44009A	SCREW-BHCS, 1/4-20 X 7/8
12	1	1-6668	COMPRESSION SPRING
13	3	1-22623A	SELF-TAPPING SCREW TCB
14	2	1-2509	SCREW-BHCS, 1/4 - 20 X 5/8
15	3	8-7216	PLUG-HOLE, 16MM DIA
16	1	EAA0263G07A	ASSY-BRAKE PEDAL
17	1	EAA0364G85A	ALU VS MOT. INT.FL. D. 28.5/40
18	1	EAA0338G73A	STAND. SAPE 1D-2D ASSY
19	1	EAA0369J30A	CABINET ASSY - S2, RED
20	1	EAA0394G54A	INTEGRATED DISPLAY PANEL
21	1	EAC0053J15A	BRAKE SPACER
22	1	EAC0054P00A	JBEG WEIGHT
23	2	2-23201	TERMINAL LUG-6.3MM X .8MM POP RIVET
24	1	EAS2113J77A	BRACKET - CAL WEIGHT
25	1	EAA0369J81A	POWER INLET ASSEMBLY
26	1	7-16201A	TRANSFORMER- 500VA AUTOMATIC
27	2	8-02340A	CLIP KEYHOLE NYLON
28	1	EAA0369J53A	WHEEL GUARD SUPPORT
29	1	EAM0062G50A	VIBRATORY SYSTEM COVER
30	1	EAS2113J78A	SHIELD - FIRE
31	1	EAS2118J60A	PLATE-TRANSFORMER, S2 CABINET
32	2	EAW0239D07A	GROUND WIRE
33	1	EAW0243J02A	MAIN SWITCH INVERTER CABLE
34	1	EAW0277G08A	BALANCER MAIN POWER HARNESS
36	1	EAL0341J98A	LABEL-BALANCER WARNINGS, EBOX
37	2	8-23762A	LABEL - EARTH SYMBOL
38	1	1-7558	POP RIVET-3/16"
	1	EAL0352J11A	SNAP ON DECAL
	1	EAL0352J19A	SNAP ON "S"

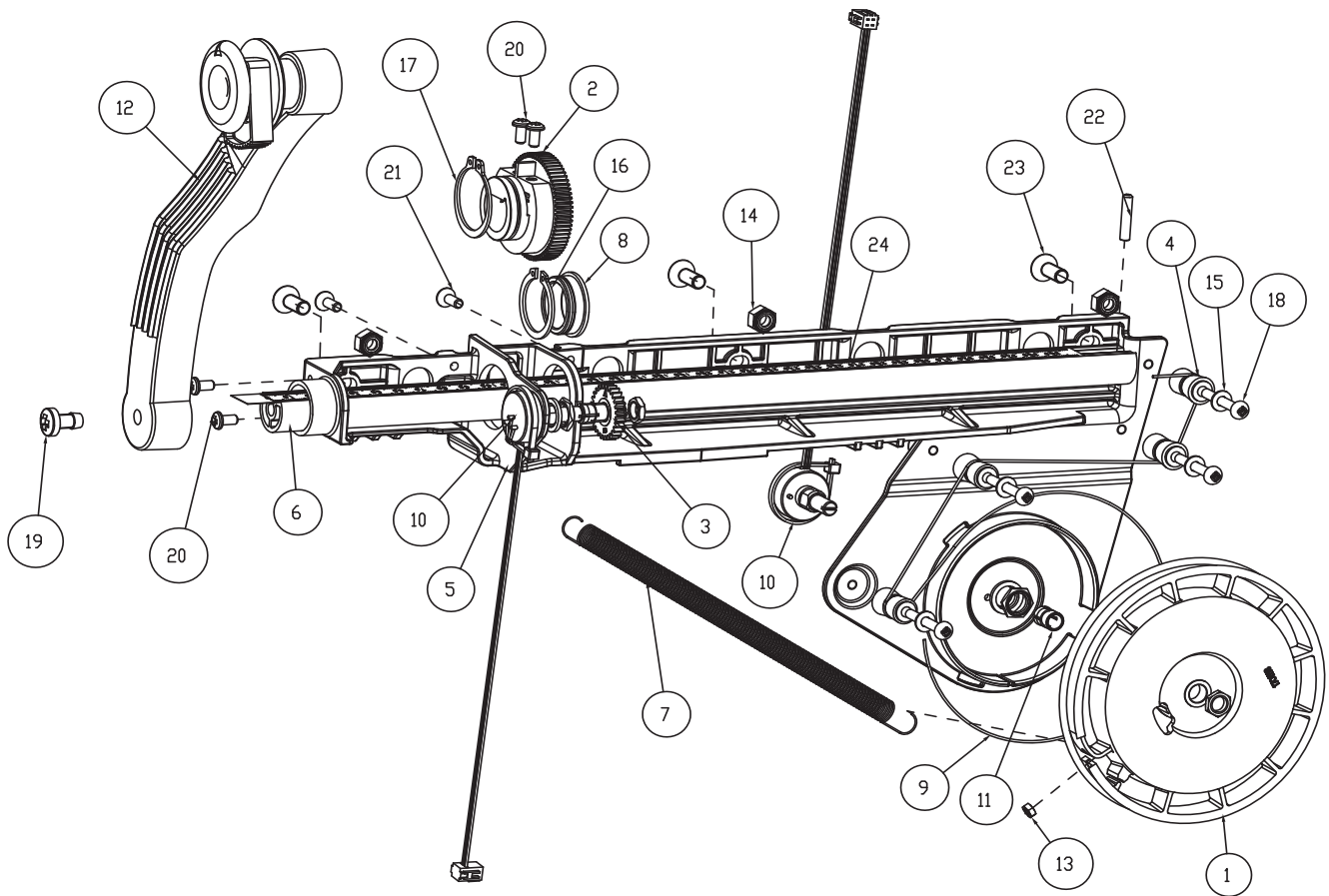
UPPER DISPLAY  
EAA0394G54A



SYM	REQ	PART NO	DESCRIPTION
1	1	EAP0274G70A	ELECTRONIC BOARD JB
2	1	EAC0099G62A	SMALL KEYBOARD SUPPORT
3	5	1-10226A	SCREW FOR PLAST. PHIL. PAN H. D=3,0 X 8
4	1	EAL0425G30A	FLAT KEYBOARD SNAP-ON
5	1	EAM0075G37A	KEYBOARD GASKET
6	5	1-9541	WASHER-FLAT,M3 DIN 125A

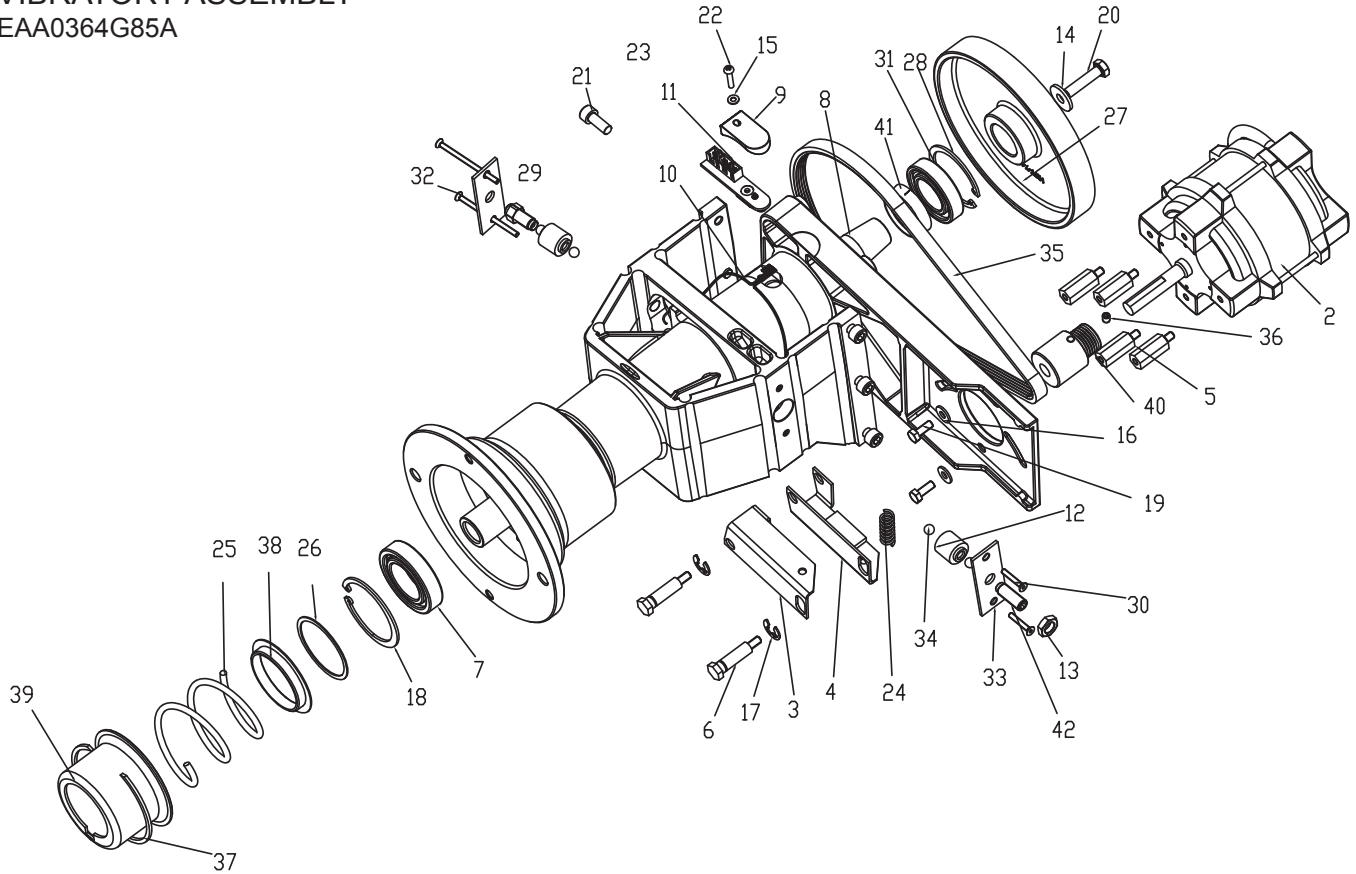


2D SAPE ASSEMBLY  
EAA0338G73A



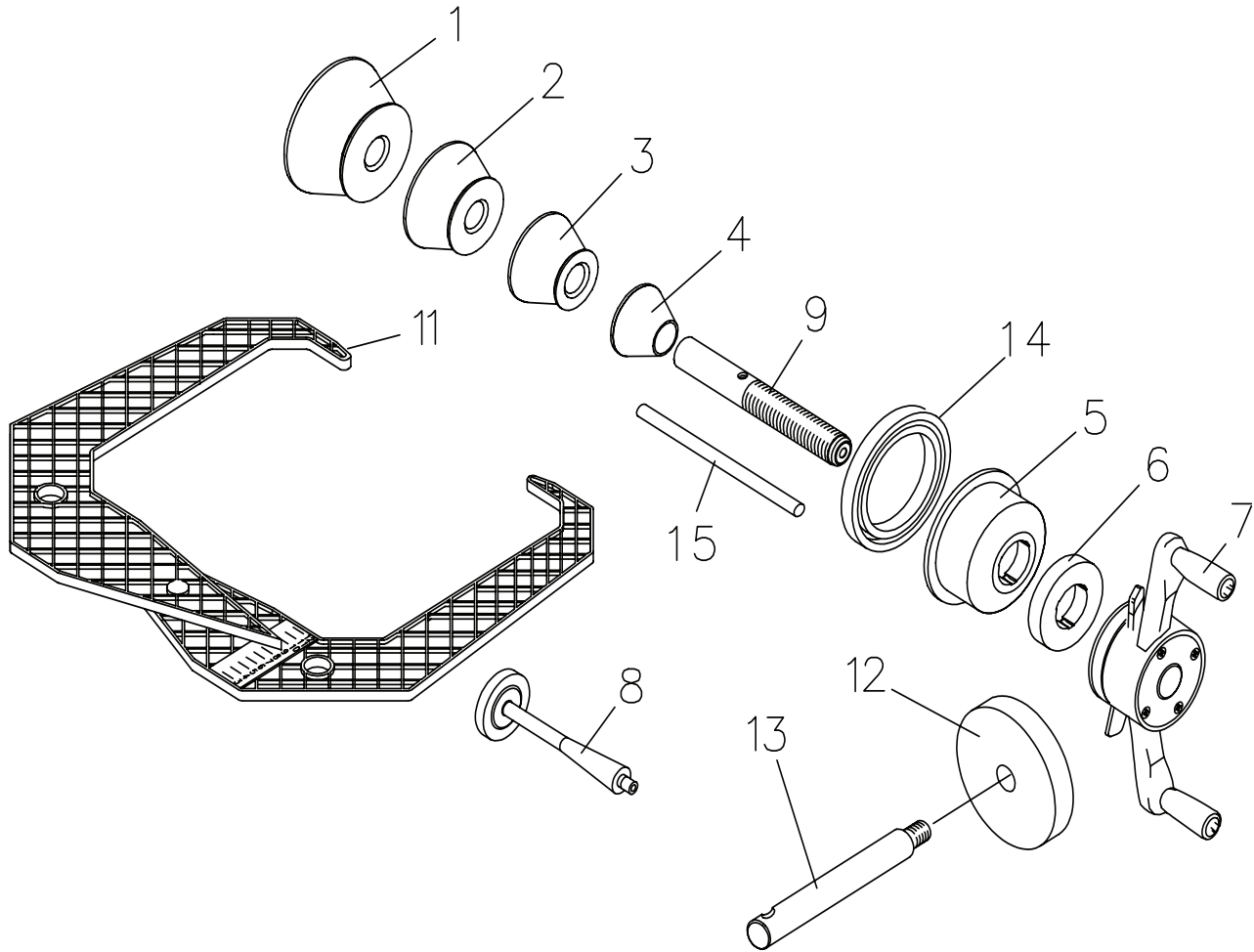
SYM	REQ	PART NO	DESCRIPTION
1	1	EAC0058D06A	ROPE REEL 290MM
2	1	EAC0058D12A	ZAHNRAD, 56Z COG WHEEL 56 TEETH
3	1	EAC0058D13A	COG WHEEL 28 TEETH
4	4	EAM0005D35A	GUIDING REEL
5	1	EAC0087G59A	STAND. S1 SAPE SUPPORT
6	1	EAM0053G16A	STANDARD. ROD SAPE, S1
7	1	1-06567A	STAND SAPE TENSION SPRING
8	1	EAM0068G76A	S2-2D SAPE BUSHING
9	1	6-00604A	ROPE HONEYWELL SPECTRA FIBER 1000 D=0.6
10	2	EAA0266D20A	ROTATIVE TRANSDUCER 100HM
11	2	2-07657A	CLAMPING DEVICE W/NUT
12	1	EAA0277D94A	SAPE ARM EUROPE W/ EJECTOR
13	1	1-11233	NUT, HEX, M3
14	3	1-9933	NUT, PREVAILING TORQUE M6
15	4	1-9641	PLAIN WASHER D4MM
16	1	1-4577	RING SNAP,25X1.20 DIN471
17	1	1-13377A	CIRCLIP FOR SHAFT A27X1,20
18	4	1-24906A	SCREW, PAN HEAD PHIL M4X30
19	1	1-3824	THREADFORMING SCREW C-M6X12
20	4	1-11726A	SCREW, SELF TAPPING FOR PLASTIC D4X8MM
21	2	1-12126A	SELF TAP. SCREW PT WN1413 4X12 ZINC
22	1	1-7810	SCREW, SET M4X20 FLAT TIP
23	3	1-22003A	SCREW SOCKET FLAT HEAT M6X16 ZINC.
24	1	EAM0086G85A	DISTANCE SCALE DECAL FOR SAPE S2

VIBRATORY ASSEMBLY  
EAA0364G85A



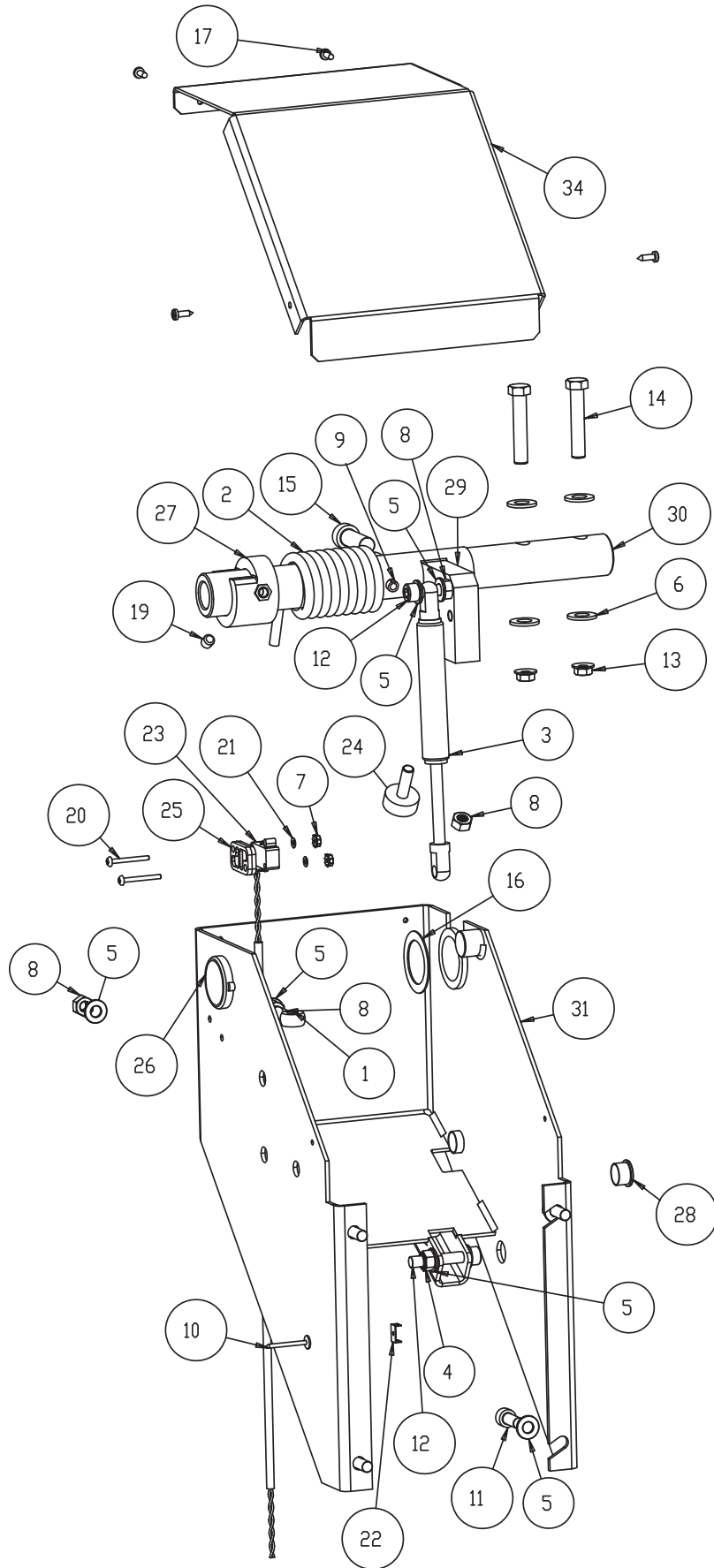
SYM	REQ	PART NO	DESCRIPTION
1	1	EAM0079G46A	MACHINED INTEGRATED FLANGE FOR ALU VS
2	1	2-59366A	Y2K UL MOTOR CAR VERSION EME
3	1	EAA0260D56A	BRAKE LEVER A CPL.
4	1	EAA0260D57A	BRAKE LEVER B CPL.
5	4	EAM0005D09A	MOTOR DISTANCE BOLT
6	2	EAM0005D10A	BOLT SW13
7	1	1-06663A	BALL BEARING 6007 2NSE 62/35/14
8	1	EAM0048G97A	ALU VS MAIN SHAFT INT.FLANGE D 28/40
9	1	EAC0094G11A	ALU VS ENCODER BOARD PROTECTION
10	1	EAW0240G67A	VIBRAT.SYSTEM CABLE WITHOUT TEMP.SENSOR
11	1	EAA0344G00A	OPTO-ENCODER BOARD WITH LENS
12	2	EAA0260D59A	PIEZO SENSOR
13	1	1-04634A	NUT - HEX, M10, 1,5MM PITCH, ZINC
14	1	1-17841	WASHER - D. 8X24
15	1	1-9641	PLAIN WASHER D4MM
16	2	1-16641	WASHER PLAIN D 6MM
17	2	1-13177	CIRCLIP D. 9
18	1	1-20777A	RING, STOP FOR HOLES D62X2 UNI7437
19	2	1-46701A	SCREW HEX. HEAD M6X16
20	1	1-32901	SCREW, HEXAGON CAP 8X35 8.8 A2J DIN933
21	6	1-17709	SCREW - SHCS M8 X 20MM ISO4762, DIN912
22	1	1-35006A	SCREW - PHMS,M4X20 4.8 A2J DIN7985 **
23	1	EAA0364G80A	PREASS. ALU V.S. MOT. INTEGRATED FLANGE INTERF.
24	1	1-6568	COMPRESSION SPRING 1.6 X 10 X 58.5
25	1	1-6468	COMPRESSION SPRING 5 X 63 X 120
26	1	1-17641	WASHER
27	1	EAM0005D12A	DRIVE WHEEL
28	1	1-10477	RETAINING RING FOR BORES J55X2 DIN472
29	1	1-11833	NUT - M8 - X 1.25 DIN 934
30	2	1-17403	MSCR, FLH - M 4 X 25MM
31	1	1-1863	BALL BEARING 6006 ZZE
32	2	1-19903A	MSCR, FLH - M 4 X 65MM
33	2	1-2967	PRETENSION SPRING
35	1	8-3531	MULTIRIB BELT 5 PJ 711 DIN7867
36	1	1-28410	SET SCREW
37	1	1-13077	CIRCLE CLIP SB 92
38	1	6413918	SPRING CENTERING RING SHORT
39	1	6416521	SPRING CASE
40	1	EAM0005D08A	MOTOR PULLEY Y2K
41	1	EAC0058D94A	POLYGON RING
42	2	EAM0005D07A	M10X1 SET SCREW M10X29 "SNAP-ON"

**CONES AND ACCESSORIES**  
EEWB331A parts



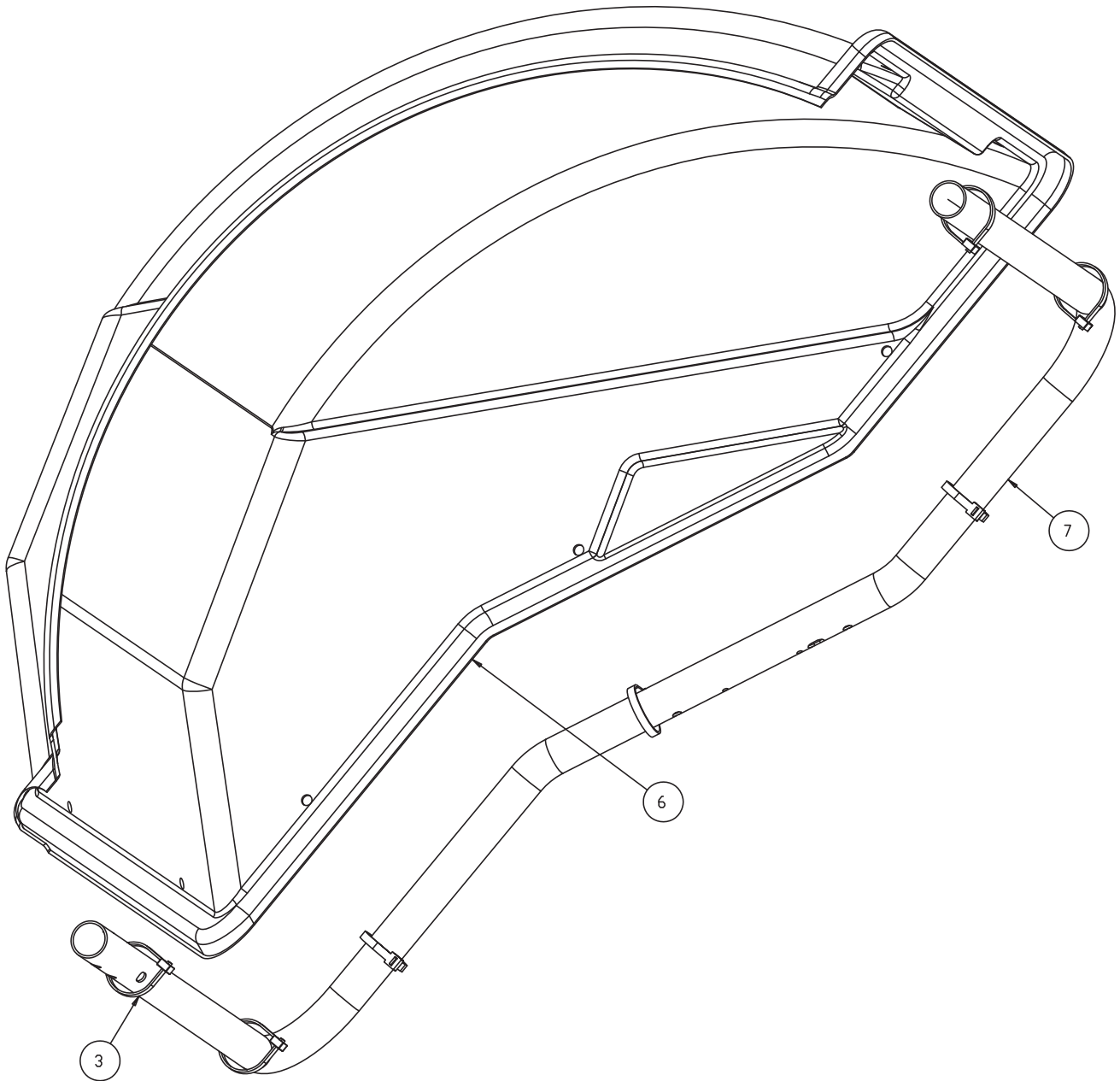
ITEM	QTY	PART NUMBER	DESCRIPTION
1	1	EAM0003J69A	CONE, 89-132 MM (3.42" - 5.40")
2	1	EAM0005D25A	CONE, 71 - 99 MM (3.78" - 4.57")
3	1	EAM0005D24A	CONE, 56 - 84 MM (2.83" - 3.90")
4	1	EAM0005D23A	CONE, 43 -63 MM (1.65" - 3.03")
5	1	EAC0058D07A	CUP - PRESSURE
6	1	EAC0058D08A	DISK - PRESSURE
7	1	EAA0263G66A	QUICK NUT
8	1	EAM0005D40A	WEIGHT - CALIBRATION
9	1	EAM0021D90A	40 MM STUB SHAFT
11	1	EAA0247G21A	CALIPER - RIM WIDTH
12	4	EAC0060G02A	FLANGE - COVER, HOOK
13	4	EAM0006G01A	HOOK - STORAGE
14	1	EAC9958D15A	RUBBER PROTECTOR
15	1	EAM0005D34A	FASTENING ROD

WHEEL GUARD SUPPORT  
EAA0369J53A



SYM	REQ	PART NO	DESCRIPTION
1	1	1-01530	EYEBOLT-M8 X 50
2	1	1-04267A	SPRING-TORSION
3	1	1-06769A	GAS SPRING
4	1	1-10033	NUT, HEX, M8
5	10	1-10041	WASHER D.8 UNI6592-69/DIN125
6	4	1-10141	WASHER, PLAIN DIN 125A
7	2	1-15033	NUT-KEPS, M3 - .5
8	4	1-15933A	NUT - HEX, M8
9	1	1-12452	PINS - STRAIGHT SLOTTED 8X45 DIN 1481
10	1	1-7558	POP RIVET-3/16"
11	4	1-17709	SCREW - SHCS M8 X 20MM
12	2	1-18209	SHCS-M8 X 45
13	2	1-8133	NUT & WASHER ASSY 3/8 - 16
14	2	1-1101	SCREW - HHMS 3/8 - 16 X 2.00
15	1	1-20409	SCREW TCEI M12X35 12.9 BR
16	1	1-22441A	SHIM RING 32X45X1
17	4	1-22623A	SELF-TAPPING SCREW TCB
19	1	1-47810	SCREW, SET, FLT PT M8 - 1.25 X 8MM
20	2	1-7104	SCREW - PAN HS, M3 X 30
21	2	1-9541	WASHER-FLAT,M3 DIN 125A
22	1	2-23201	TERMINAL LUG-6.3MM X .8MM POP RIVET
23	1	EAW0233J08A	CABLE-SWITCH ASSY
24	1	8-14418A	BUMPER 25X10 / M8X25
25	1	EAC0053J16A	MICROSWITCH PLATE
26	2	EAC0058D36A	WHEELGUARD BUSHING D.32
27	1	EAC0058D38A	SCHALTRING SWITCH SEGMENT
28	2	8-7216	PLUG-HOLE, 16MM DIA
29	1	EAM0084J28A	WHEELGUARD STOP
30	1	EAM0084J29A	BACKPACK SHAFT
31	1	EAS2128J43A	L.E. VIDEO BACK PACK
34	1	EAS2128J41A	BACKPACK LID

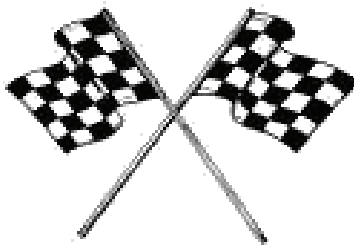
HOOD ASSEMBLY  
EAA0369J54A



SYM	REQ	PART NO	DESCRIPTION
3	7	5-03345A	CABLE TIE, PLASTIC
6	1	EAC0100G21A	HOOD 42"
7	1	EAM0084J30A	L.E. VIDEO WHEELGUARD

BLANK PAGE

# *Snap-on*®



Notice: The information contained in this document is subject to change without notice. Snapon Equipment makes no warranty with regard to this material. Snapon Equipment shall not be liable for errors contained herein or for incidental consequential damages in connection with furnishings, performance, or use of this material.

This document contains proprietary information which is protected by copyright and patents. All rights are reserved. No part of this document may be photocopied, reproduced, or translated without prior written consent of Snapon Equipment.