



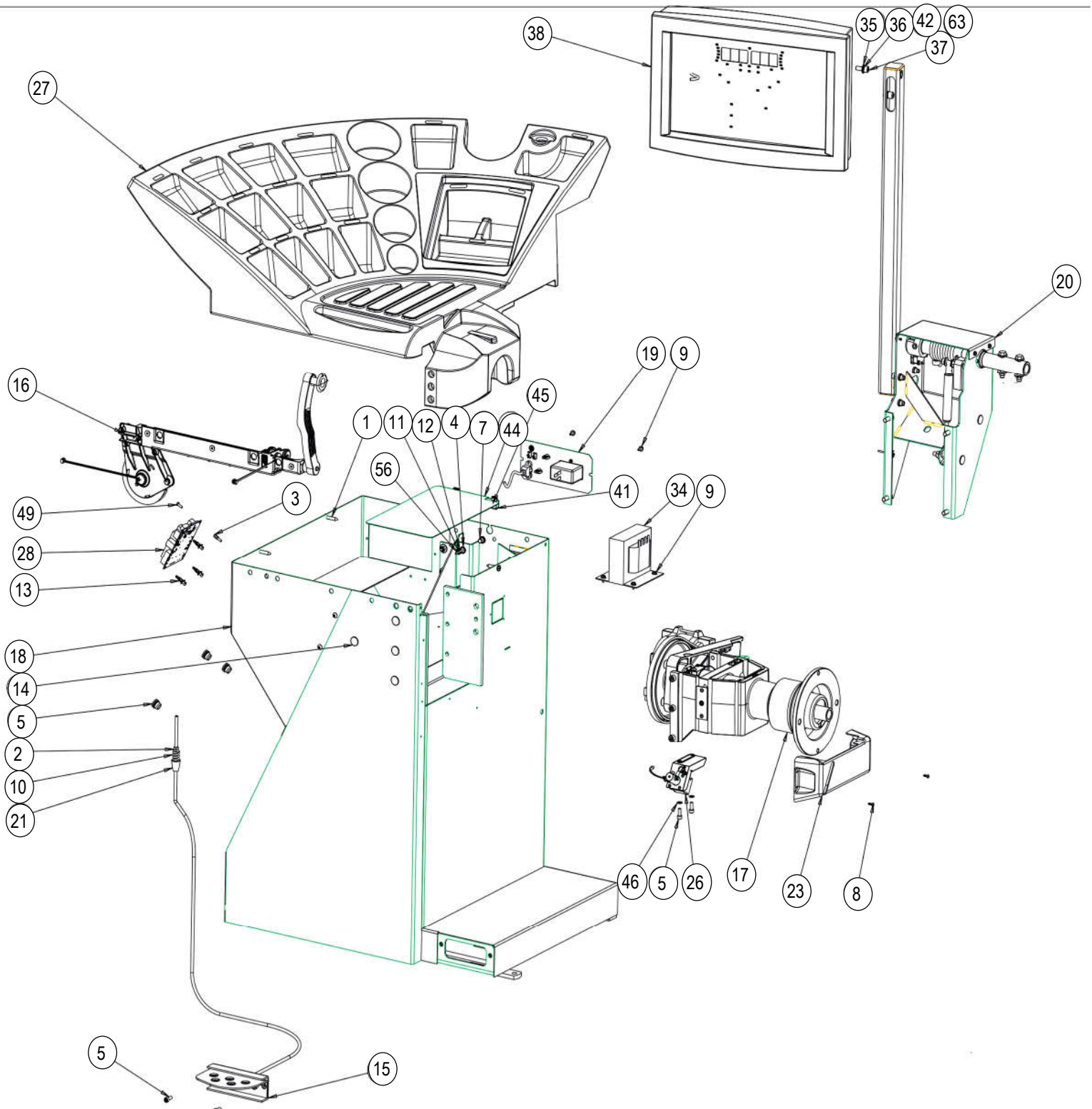
EEWB332B

**Motorized Wheel Balancer
with Raised Display and
Sonar**



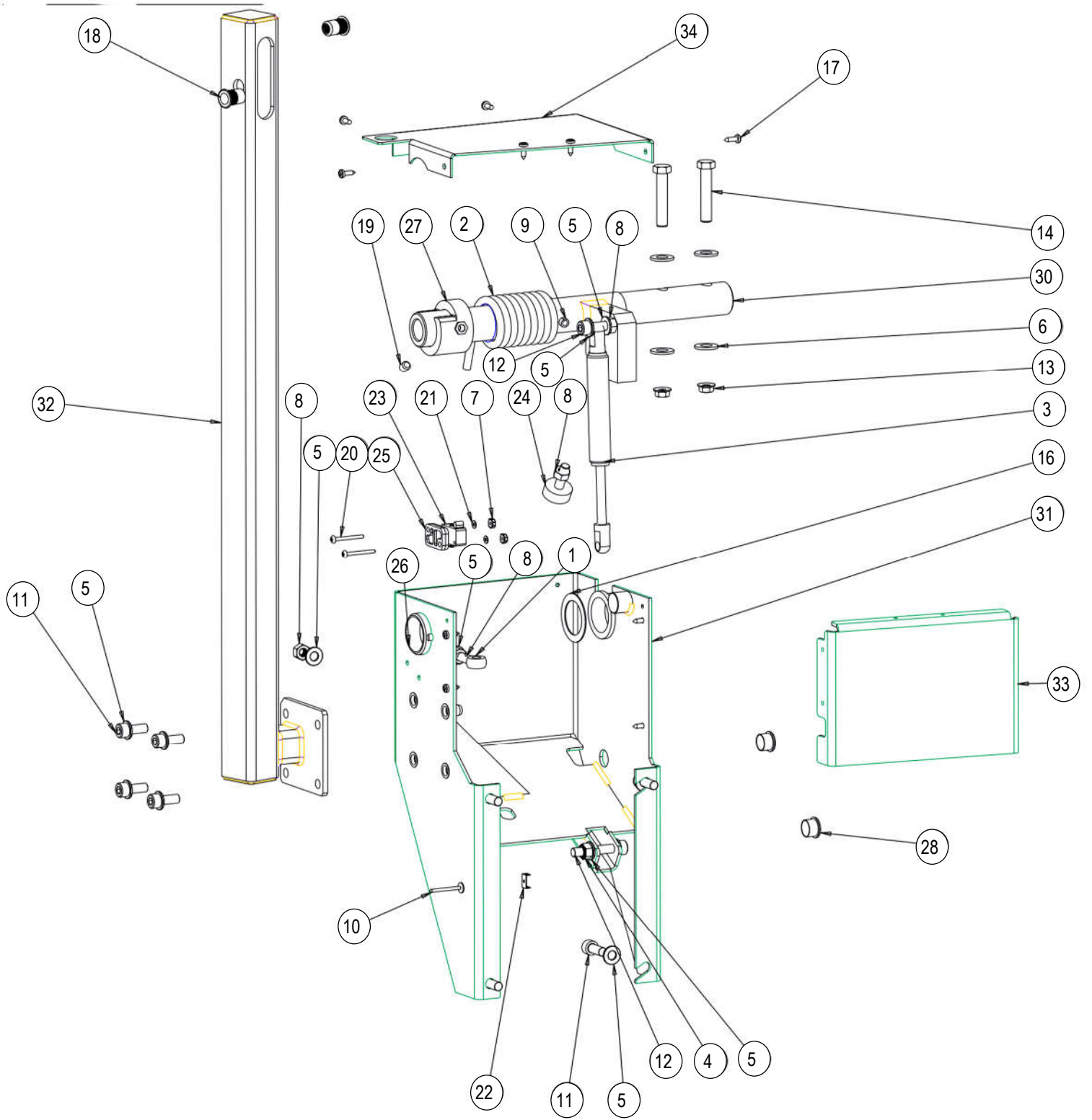
EEWB332B PARTS MANUAL

PART NUMBER	DESCRIPTION
EAA0423J39A	ASSY SO EEWB332B
EAA0369J66A	HOOD ASSY-WITH SONAR
EAW0290J26A	POWER CABLE-5 METERS
ZEEWB332B9	LIT PACK SNAP-ON HAND SPIN
EAL0341J96A	LABEL-BALANCER WARNING REAR
EAL0341J97A	LABEL-BALANCER WARNING SIDE
EAL0341J63A	LABEL-PATENT
EAL0343J76B	SERIAL LABEL DOCUMENT
EAL0352J20A	DECAL SNAP-ON 9" WHITE VINYL
EAL0352J19A	DECAL SNAP-ON S WHITE VINYL
EAL0420J33A	LABEL-CAUTION MAX WHEEL DIA
EAA0263G79A	QUICK NUT KIT
EAK0309J28A	KIT - 4 CONE
EAC0058D68A	SPACER, 29660
EAM0005D40A	CALIBRATION WEIGHT
EAM0006G01A	PIN CONE STORAGE
EAC0060G02A	FLANGE WSHR CONE STORAGE
WWPR13A	PLIER WEIGHT SNAPON
EAA0247G21A	WHEEL CALIPERS
EAL0341J56A	LABEL-LASER
EAL0341J70A	LABEL-LASER APERTURE
EAL0341J71A	LABEL-CFR CERTIFICATION

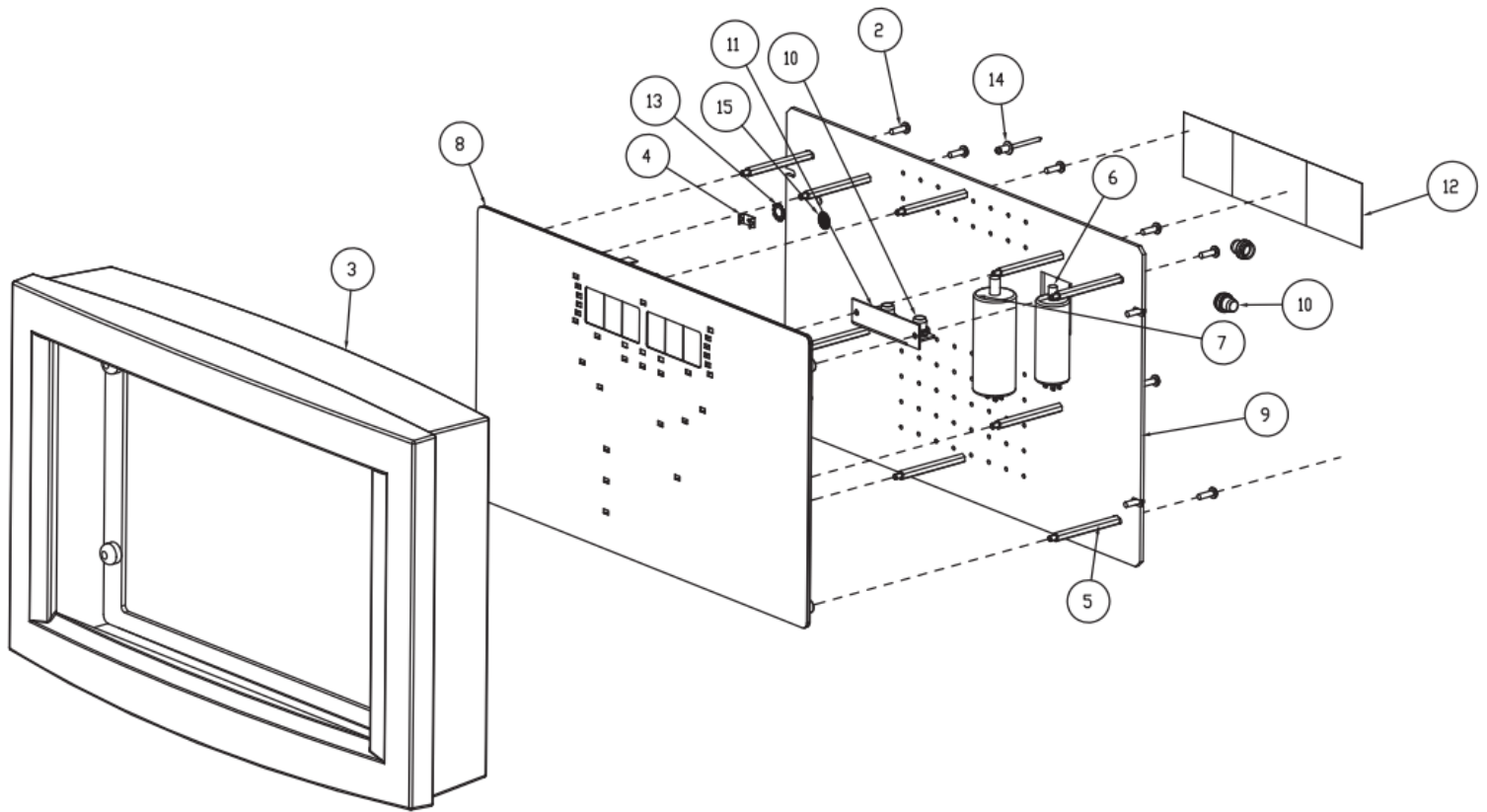


REF#	QTY	PART NUMBER	DESCRIPTION
1	3	1-03725A	SCREW-PH SELF TAP M6.3X32 PHIL
2	2	1-11633A	NUT-M6 X 5,2MMTHK, BLK
3	1	1-11961A	STANDOFF - HEX M4 X 10
4	2	1-1548	WASHER-EXT,SHAKEPROOF 6MM
5	4	1-16309	SCREW - SHCS, M6 X 16MM,
6	4	1-17659A	THREADED INSERT M10X22
7	3	1-18359A	NUTSERT, M8
8	2	1-22623A	SCR, SHT MET PHIL PHN 3.8MM X 13MM
9	6	1-3724	SCREW-SELF TAP,5 X 10MM
10	1	1-6668	COMPRESSION SPRING
11	1	1-7558	POP RIVET-3/16"
12	2	2-23201	TERMINAL LUG-6.3MM X .8MM POP RIVET
13	3	2-732	SUPPORT PCB LOCKING
14	4	8-7216	PLUG-HOLE, 16MM DIA
15	1	EAA0263G07A	ASSY-BRAKE PEDAL
16	1	EAA0423J38A	SNAP-ON. M1 SAPE 1D-2D ASSY
17	1	EAA0364G85A	ALU VS MOT. INT.FL. D. 28.5/40
18	1	EAA03423J45A	CABINET ASSY - M2, RED
19	1	EAA0369J55A	POWER INLET ASSEMBLY
20	1	EAA0369J86A	WHEEL GUARD SUPPORT
21	1	EAC0053J15A	BRAKE SPACER
22	1	1-2676	PLUG-HOLE, 2"DIA
23	1	EAC0103G31A	VIBRATORY SYSTEM COVER
26	1	EAA0394G93A	WEIGHT LASER
27	1	EAM0122G76A	MACHINED WEIGHT-TRAY
28	1	EAP0276G50A	WEIGHT LASER BOARD PCB ASSY
29	2	EAW0239D07A	GROUND WIRE
31	1	EAW0276G39A	CABLE ASM- AWP ENCODER
32	1	EAW0283G46A	LASER POINTER POWR SUPPLY CABLE
33	1	EAW0243J02A	MAIN SWITCH INVERTER CABLE
34	1	7-16201A	TRANSFORMER- 500VA AUTOMATIC
35	2	1-10041	WASHER D.8 UNI6592-69/DIN125
36	2	1-02543A	WASHER - LOCK, M8
37	2	1-17709	SCREW - SHCS M8 X 20MM

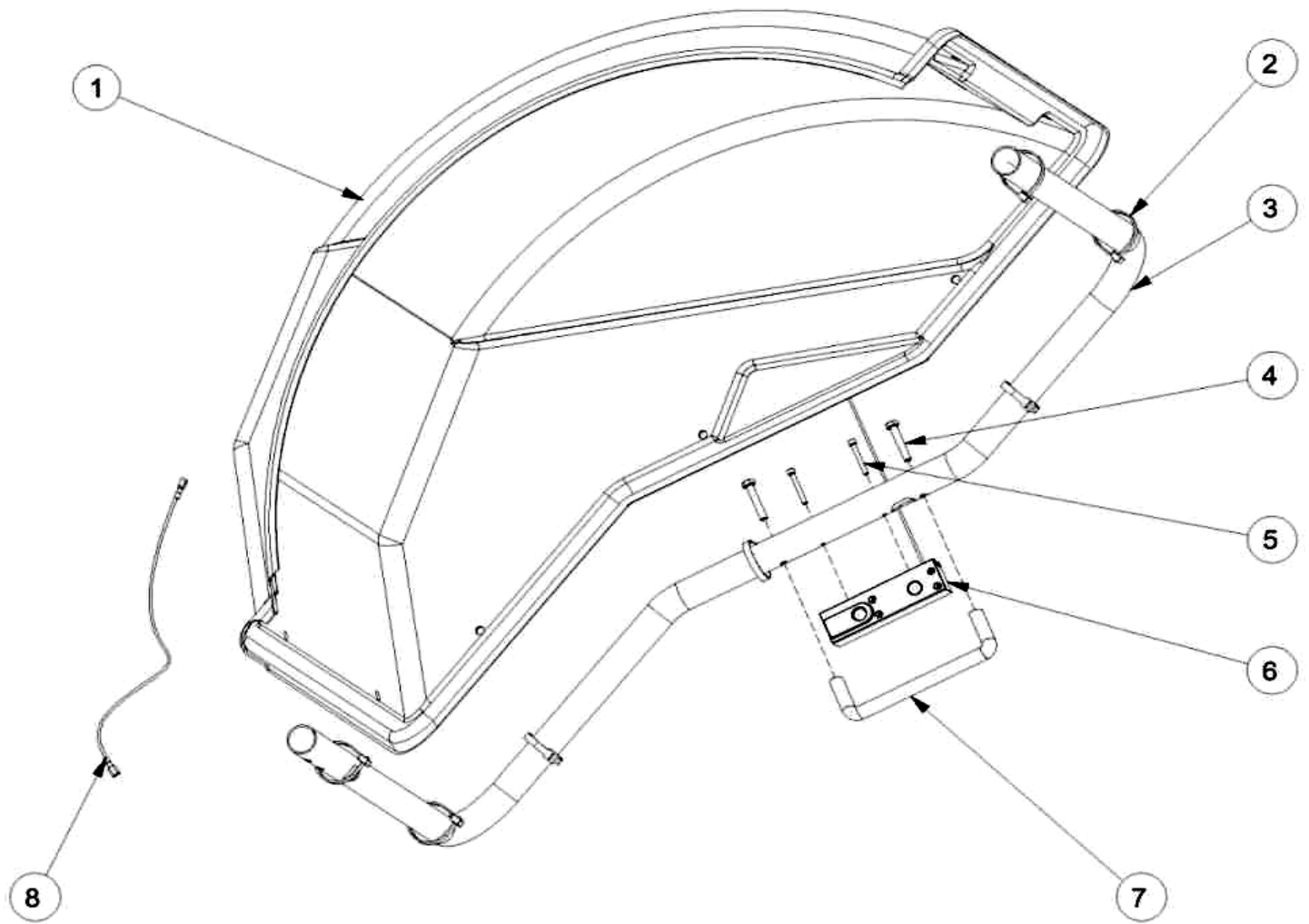
REF#	QTY	PART NUMBER	DESCRIPTION
38	1	EAA0423J40A	ASSY USER INTERFACE DISPLAY ASSMBY
41	2	1-07439A	NUT - SPEED, "U" TYPE,
42	1	EAA0439G97A	SONAR ASSY DIGITAL
44	1	EAS2128J67A	SHIELD - FIRE
45	2	1-2509	SCREW-BHCS, 1/4 - 20 X 5/8
46	2	1-02443A	WASHER, LOCK-M6 1-02443A
49	1	1-13606A	SCREW, M4 X 6MM W/ LOCKWASHER
50	1	EAP0275G10A	POTENTIOMETER INTFC BOARD
51	1	2-62148A	MALE CONN 6 POLE 2.5MM PIN SPACING
52	1	EAW0283G24A	USER INTERFACE HD HARNESS
56	1	8-23762A	LABEL - EARTH SYMBOL
61	1	1-27259A	M8 X 1.25 NUTSERT LONG GRIP
62	2	5-06345A	PANEL FIXING TIES 4.8X130MM
63	5	5-09145A	PUSH RIVET , NATURAL NYLON
N/S	5	5-09345A	STRAIN RELIEF - FLAT CABLE
N/S	1	2-07932A	LOCKING PC BOARD SUPPORT
N/S	2	5-2345	TIE - CABLE 4" LG X .10" WD
N/S	1	1-10576A	HOLE PLUG 51MM



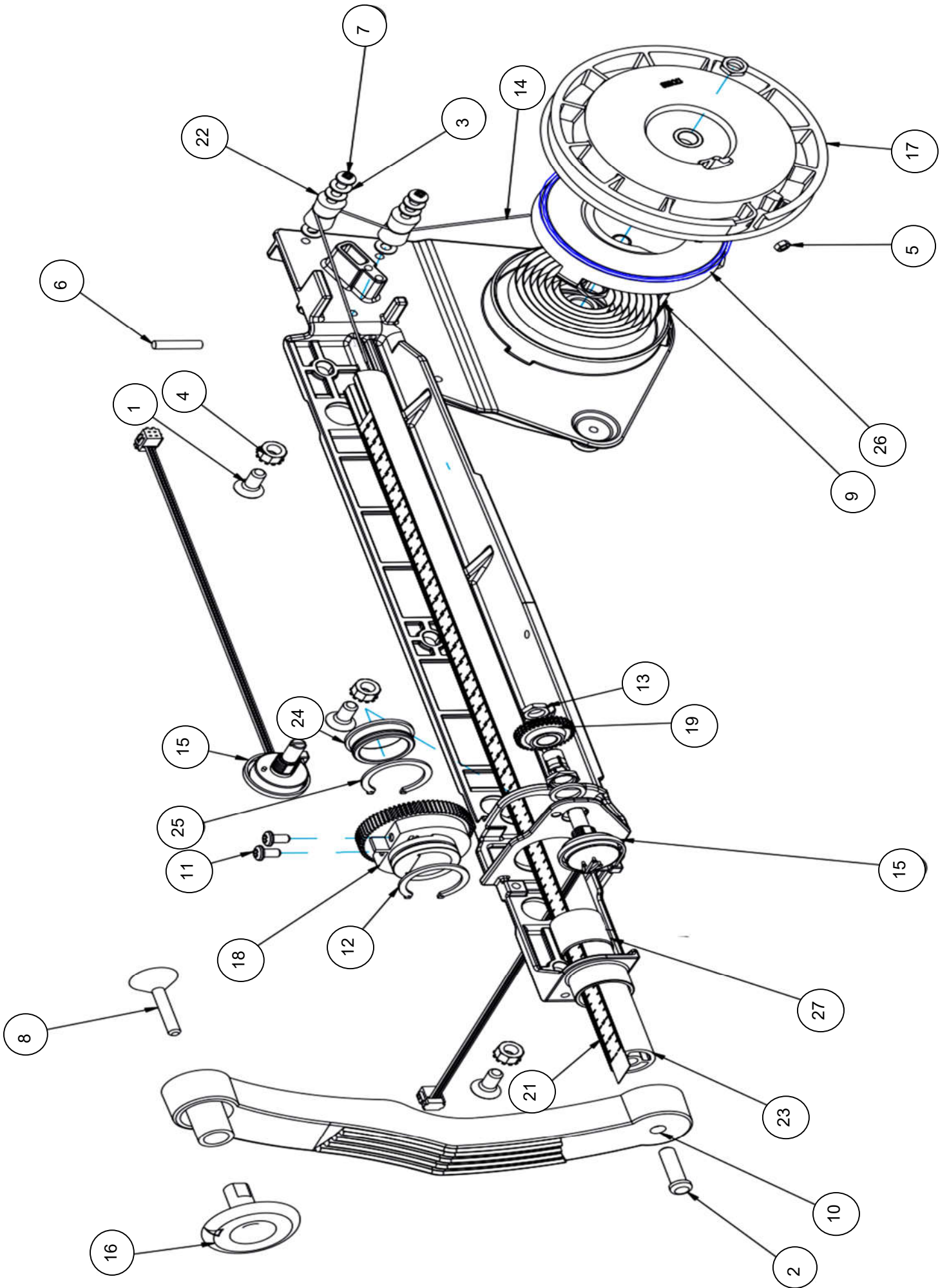
REF#	QTY	PART NUMBER	DESCRIPTION
1	1	1-01530	EYEBOLT-M8 X 50
2	1	1-04267A	SPRING-TORSION
3	1	1-06769A	GAS SPRING
4	1	1-10033	NUT, HEX, M8
5	14	1-10041	WASHER D.8 UNI6592-69
6	4	1-10141	WASHER, PLAIN DIN 125A
7	2	1-15033	NUT-KEPS, M3 - .5
8	4	1-15933A	NUT - HEX, M8
9	1	1-12452	PINS - STRAIGHT SLOTTED 8X45 DIN 1481
10	1	1-7558	POP RIVET-3/16"
11	8	1-17709	SCREW - SHCS M8 X 20MM
12	2	1-18209	SHCS-M8 X 45
13	2	1-8133	NUT & WASHER ASSY 3/8 - 16
14	2	1-1101	SCREW - HHMS 3/8 - 16 X 2.00
16	1	1-22441A	SHIM RING 32X45X1
17	10	1-22623A	SELF-TAPPING SCREW TCB
18	2	1-27259A	M8 X 1.25 NUTSERT LONG GRIP
19	1	1-47810	SCREW, SET, FLT PT M8 - 1.25 X 8MM
20	2	1-7104	SCREW - PAN HS, M3 X 30
21	2	1-9541	WASHER-FLAT,M3 DIN 125A
22	1	2-23201	TER LUG-6.3MM X .8MM POP RIVET
23	1	EAW0233J08A	CABLE-SWITCH ASSY
24	1	8-15218A	BUMPER 40X25 / M8
25	1	EAC0053J16A	MICROSWITCH PLATE
26	2	EAC0058D36A	WHEELGUARD BUSHING D.32
27	1	EAC0058D38A	SCHALTRING SWITCH SEGMENT
28	2	8-7216	PLUG-HOLE, 16MM DIA
30	1	EAM0084J39A	SHAFT STOP BLOCK
31	1	EAS2128J49A	ASSY BACK PACK
32	1	EAS2178J04A	ASSY MONITOR
33	1	EAS2177G41AC	FRONT BACKPACK
34	1	EAS2128J54A	WHEELGUARD SUPPORT
35	4	1-18359A	NUTSERT, M8



REF#	QTY	PART NUMBER	DESCRIPTION
N/S	1	6-14422A	CABLE PANEL MT USB TYPE B
2	1	1-24606A	SCREW-PHMS M4 X .7MM X 12MM
3	1	EAC0100G33A	CONSOLE DISPLAY BLACK
4	1	2-23201	TERMINAL-LUG POP RIVET
5	1	1-16561A	HEX THREADED SPACER M4X60
6	1	2-01429A	CAPACITOR-10UF 400V-25428
7	1	2-01529A	CAPACITOR START 20UF 400V
8	1	EAA0470G13A	CR INT DISP SNAP-ON RAISED
9	1	EAS2128J62B	DISPLAY SUPPORT PLATE
10	1	1-18359A	NUTSERT-M8 X 1.25
11	1	EAS2128J73A	MOUTNING BRACKET
12	1	EAL0341J98A	LABEL-BALANCER WARNING EBOX
13	1	1-1548	WASHER-6MM SP-PURCH TEXT
14	1	1-1758	++RIVET
15	1	8-23762A	LABEL-EARTH SYMBOL

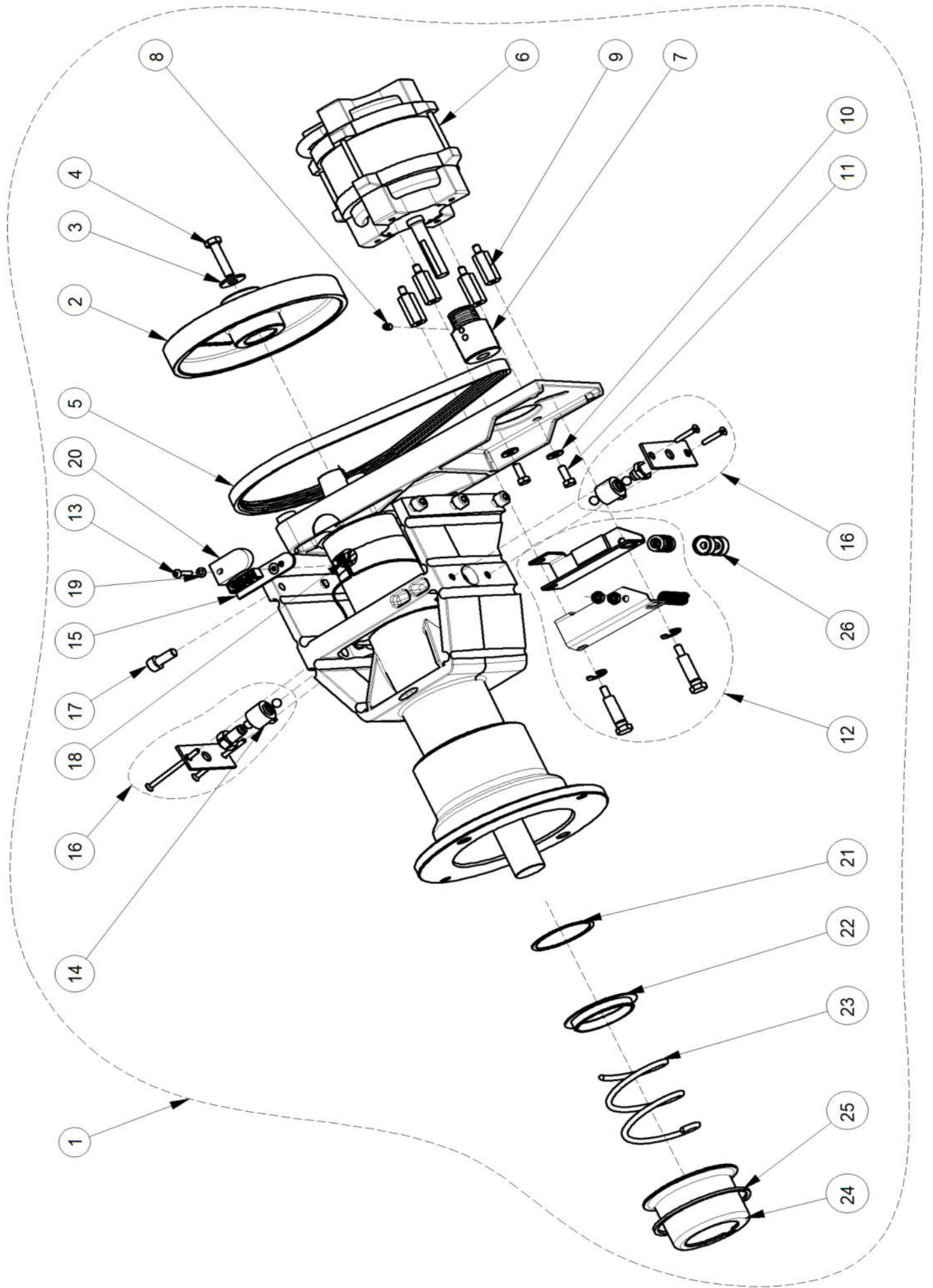


REF#	QTY	PART NUMBER	DESCRIPTION
1	1	EAC0100G21A	WHEEL GUARD 42"
2	7	5-03345A	CABLE TIE
3	1	EAM0076G34A	WHEEL GUARD PIPE
4	2	1-18209	SCREW, HEX M8 X 45
5	2	1-15509	SCREW HSHC 5X40 8G ZINC
6	1	EAA0439G97A	QR SONAR ASSY B300/GEO 7300
7	1	8-09233A	PLASTIC HANDLE-26784
8	1	EAW0283G78A	CABLE IIC SONAR SENSOR

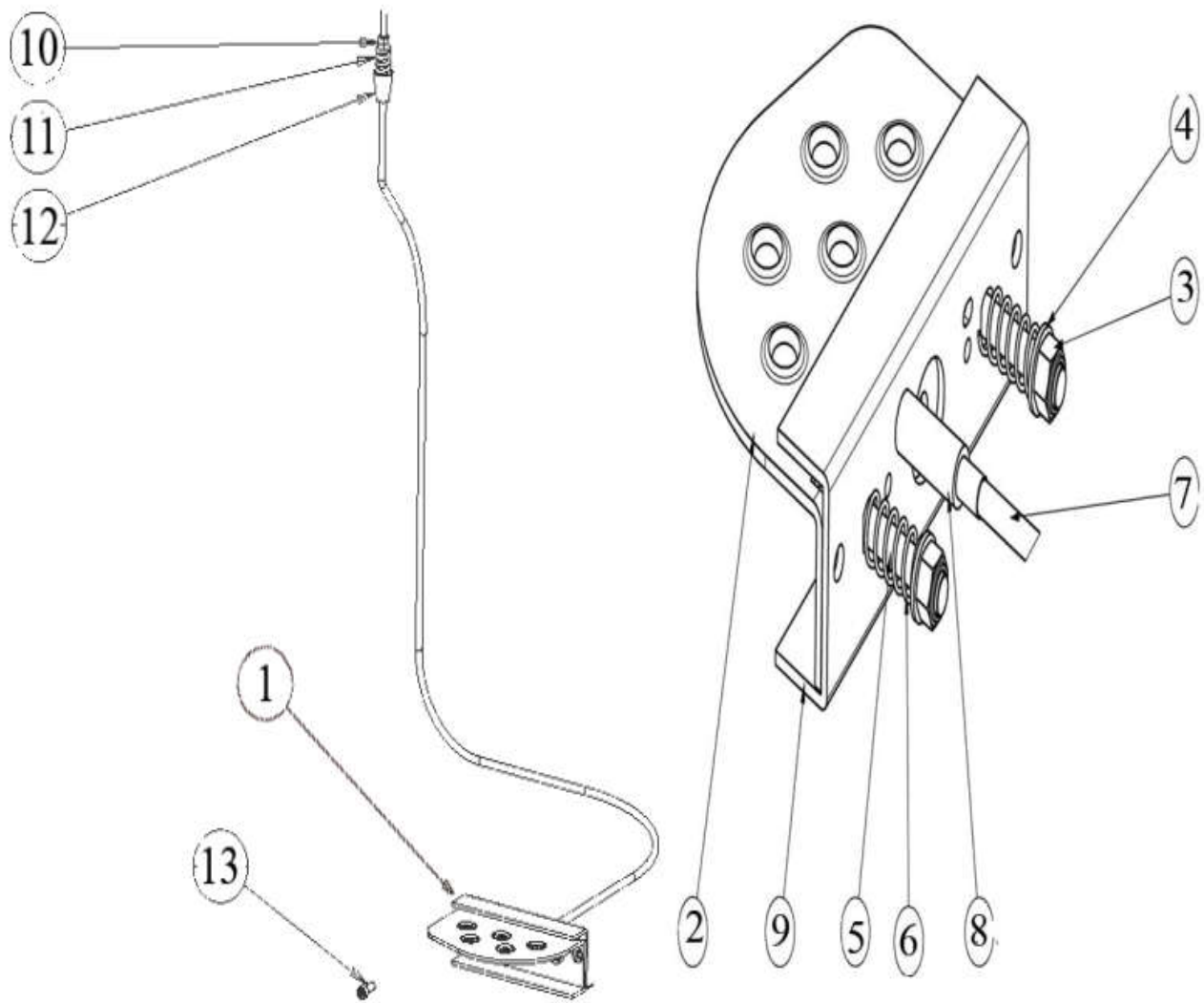


EAA0423J38A

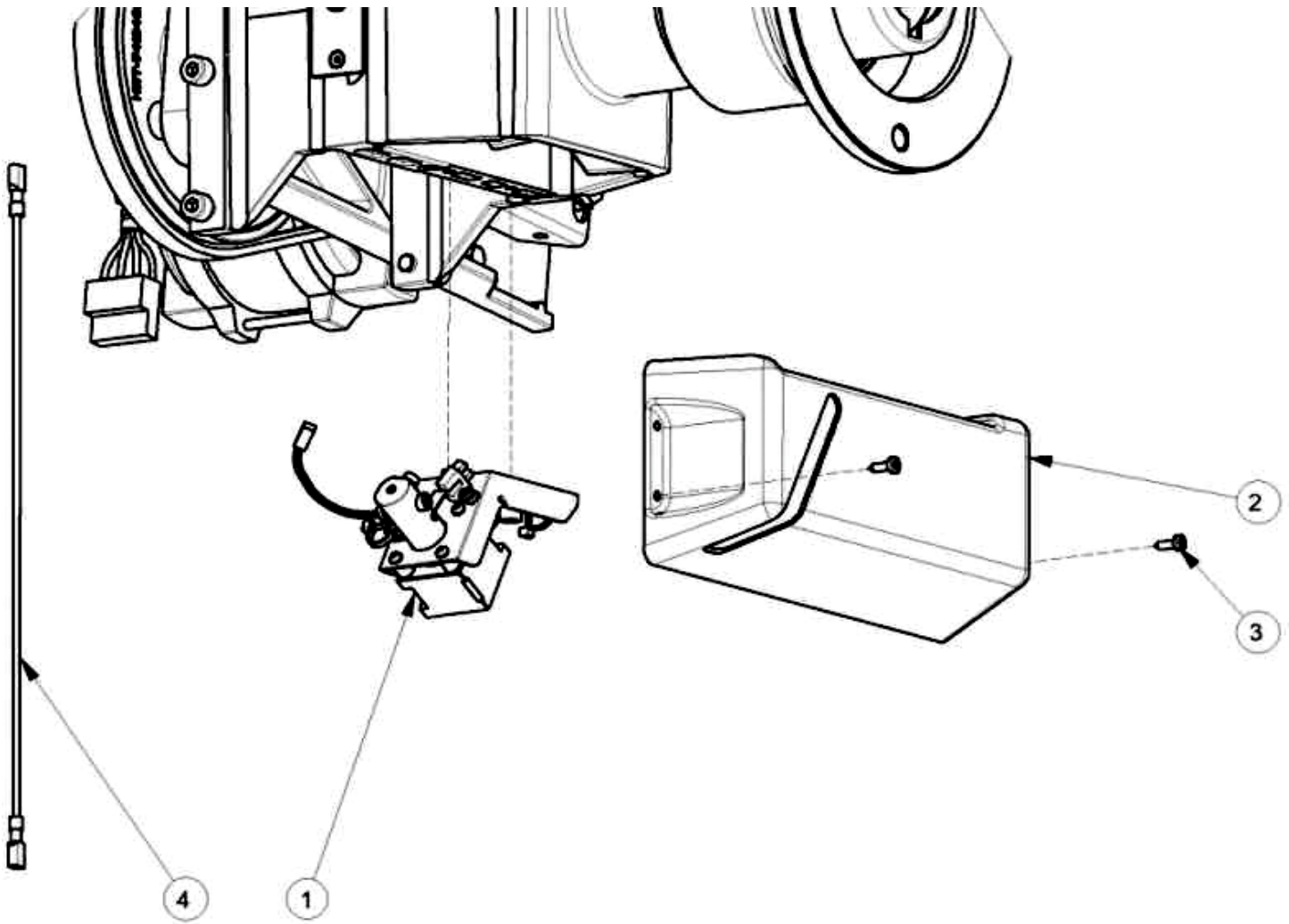
REF#	QTY	PART NUMBER	DESCRIPTION
1	3	1-27903A	SCREW - M6 X 14mm FHMS, SKT DIN 7991
2	1	1-3824	SCREW-SELF TAP,6 X 12MM
3	6	1-9641	PLAIN WASHER D4mm
4	3	1-25433A	NUT-M6 KEPS, SERRATED LW ZINC
5	1	1-11233	NUT - HEX, M3 DIN 934
6	1	1-7810	SCREW SET M4X20
7	2	1-24906A	SCREW-PHMS,M4 X .7MM X 30MM
8	1	1-13924A	SCREW-FHMS,5X35MM SELF TAP
9	1	1-03967A	SPRING-SAPE AUTO STOP SYSTEM
10	1	EAC0054P01A	ARM,AXCEL CALIPER
11	2	1-11726A	SCREW, SELF TAPPING FOR PLASTIC
12	1	1-13377A	CIRCLIP-27mm X 1.20mm DIN 471
13	2	2-07657A	CLAMPING DEVICE W/NUT
14	1	6-00604A	ROPE - SPECTRA 1000, 150 LBS
15	2	EAA0266D20A	ROTATIVE TRANSDUCER 100HM
16	1	EAC0058D11A	DISK-TOUCHING
17	1	EAC0058D06A	REEL - ROPE 290MM
18	1	EAC0058D12A	COG WHEEL - 56 TOOTH
19	1	EAC0058D13A	Cog Wheel 28 teeth
20	1	EAM0085G27A	MACHINED M2 SAPE
21	1	EAL0349G31A	DISTANCE SCALE
22	2	EAM0005D35A	REEL-GUIDING,SAPE
23	1	EAM0053G19A	STANDARD. ROD SAPE, M1
24	1	EAM0068G76A	S2-2D SAPE BUSHING
25	1	1-4577	RING-SNAP,25 X 1.20
26	1	EAC0058D58A	Safety Cover
27	1	1-13865A	BUSHING IGUS



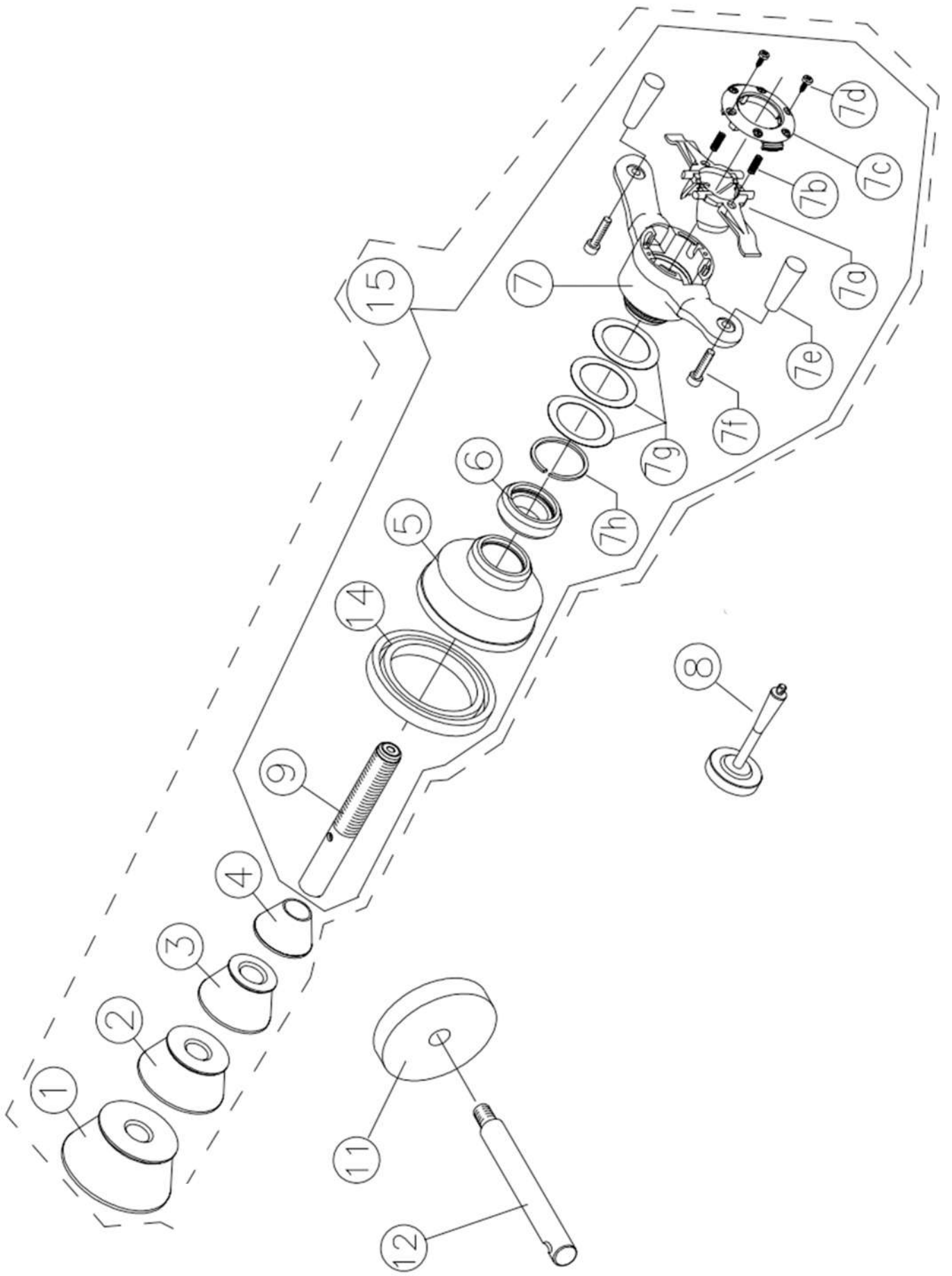
REF#	QTY	PART NUMBER	DESCRIPTION
1	1	EAA0364G85A	ALU VS MOT. INT. FL.D. 40/28,5 POL. UL
2	1	EAM0005D12A	DRIVE PULLEY
3	1	1-17841	WASHER - D. 8X24
4	1	1-32901	HEXAGON HEAD SCREW
5	1	8-3531	BELT
6	1	2-59366A	UL MOTOR INCL. CONNECTOR Y2K
7	1	EAM0005D08A	MOTOR PULLEY
8	1	1-28410	SCREW
9	4	EAM0005D09A	SPACER FOR MOTOR
10	2	1-16641	WASHER PLAIN
11	2	1-46701A	HEX HEAD SCREW
12	1	EAA0332G12A	MAIN SHAFT LOCK ASSEMBLY
	2	EAM0005D10A	BOLT SW13
	2	1-13177	CIRCLIP D. 9
	1	1-6568	COMPRESSION SPRING 1.6 X 10 X 58.5
	1	EAA0260D56A	BRAKE LEVER A CP L (UPPER)
	1	EAA0260D57A	BRAKE LEVER B CPL. (LOWER)
13	1	1-35006A	SCREW
14	1	EAA0260D59A	TRANSDUSER
15	1	EAA0344G00A	ECODER BOARD
16	1	EAA0328G16A	TRANSDUCER FIXING UNIT
	4	8-1144	STEEL BALL 8 M
	2	1-6568	COMPRESSION SPRING 1.6 X 10 X 58.5
	2	EAM0005D07A	SETSCREW HEX SOCKET M10X1X29
	1	1-04634A	NUT HEX LOW M10X1 8-A2J ISO 8675
	2	1-17403	SCREW HEX SOCKET COUNT.H M4X25 8.8-
	2	1-19903A	SCREW HEX SOCKET COUNT.H M4X65 8.8-
	1	1-11833	HEXAGON NUT B M10 X 1 -8-A2J
17	6	1-17709	SCREW TCEI 8X20 8G
18	1	EAW0240G67A	CABLE WITHOUT TEMP. SENSOR
19	1	1-9641	WASHER
20	1	EAC0094G11A	ENCODER BOARD PROTECTION
21	1	1-17641	WASHER 53X60X1
22	1	EAC0058D14A	SPRING CENTERING RING
23	1	1-07768A	COMPRESSION SPRING
24	1	EAS2025D14A	SPRING GUIDE
25	1	1-13077	CIRCLIP SB 92
26	2	EAM0005D18A	SPACER



REF#	QTY	PART NUMBER	DESCRIPTION
1	1	EAA0263G07A	BRAKE PEDAL ASSM
2	1	EAS2020P20A	PEDAL-BRAKE JBEG
3	2	1-10033	NUT-ESNA, M8
4	2	1-10041	WASHER-PLAIN, M8
5	2	1-18209	SCREW-SHCS, M8 X 45
6	2	1-06768A	SPRING-COMPRESSION
7	1	EAA0344G15A	CABLE ASSY-BRAKE PEDAL ASSY
8	1	EAM0053G06A	SPACER-BRAKE PEDAL ASSY
9	1	EAS2027G18A	SUPPORT-BRAKE CABLE
10	2	1-11633A	NUT-M6 X 5,2mmTHK, BLK
11	1	1-6668	COMPRESSION SPRING
12	1	EAC0053J15A	BRAKE SPACER
13	4	1-16309	SCREW - SHCS, M6 X 16MM,



REF#	QTY	PART NUMBER	DESCRIPTION
1	1	EAA0394G93A	LASER POINTER WITH LONG CABLES
2	1	EAC0103G31A	LASER POINTER COVER
3	2	1-22623A	SCREW, PHIL PAN H.TAPP.
4	1	EAW0276G28A	LASER POINTER EXTENSION WIRE
N/S	1	EAW0283G46A	CABLE-LASER POINTER PWR SUPPLY



REF#	QTY	PART NUMBER	DESCRIPTION
1	1	EAM0003J69A	CONE (3.42 - 5.25)
2	1	EAM0005D25A	CONE 71-99MM/2.8-3.9IN
3	1	EAM0005D24A	CONE 96-114MM/3.8-4IN
4	1	EAM0005D23A	CONE (1.70 - 3.15)
5	1	EAC0058D07A	CUP-PRESSURE,HAWEKA
6	1	EAC0058D08A	DISK PRESSURE
7	1	EAA0263G66A	QUICK NUT KIT
7A	2	7409019-020	CLAMP JAWS SET
7B	2	1611128	DISC, SPRING
7C	2	ST0027000	COVER
7D	2	ST7417071	SCREW
7E	2	ST0027008	HANDLE
7F	2	ST7205389	SCREW, HANDLE
7G	3	ST0027005	SPACER
7H	1	ST7022499	C - CLIP
78	1	EAM0005D40A	CALIBRATION WEIGHT
79	1	EAM0021D90A	40 MM STUB SHAF
N/S	1	WWPR13A	PLIER WEIGHT SNAPON
14	1	EAC0058D15A	RUBBER RING
15	1	EAA0263G79A	QUICK NUT KIT



Notice: The information contained in this document is subject to change without notice. Snap-on Equipment makes no warranty with regard to this material. Snap-on Equipment shall not be liable for errors contained herein or for incidental consequential damages in connection with furnishings, performance, or use of this material.

This document contains proprietary information which is protected by copyright and patents. All rights are reserved. No part of this document may be photocopied, reproduced, or translated without prior written consent

Snap-on Tools Company
Kenosha, Wisconsin 53141-1410