



VPI SYSTEM IV

WHEEL BALANCER



EEWB516B
EEWB516P

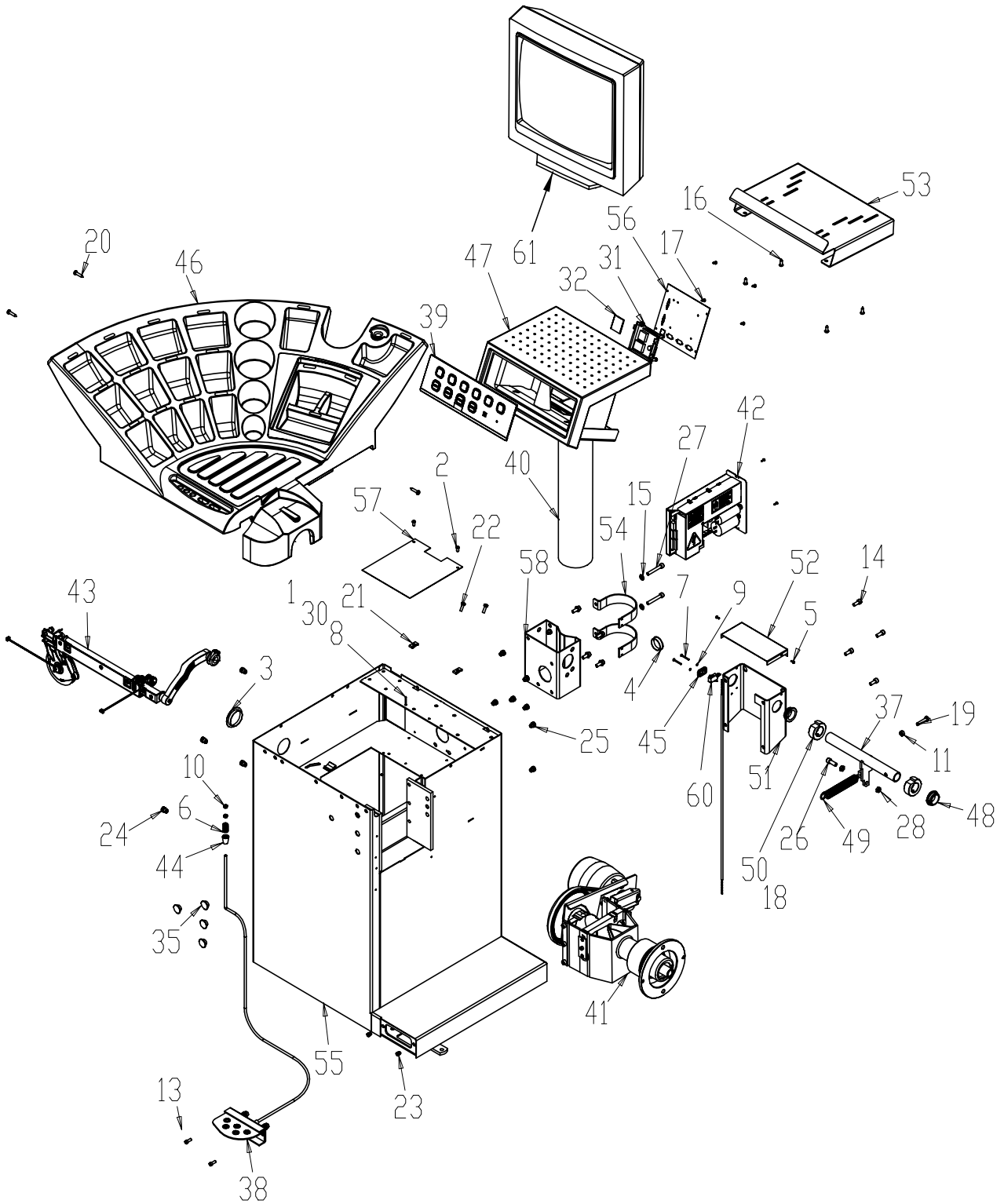
Parts Manual

All information contained or disclosed in this document is considered confidential and proprietary by Snap-on Equipment. All manufacturing, use, reproduction, and sales rights are reserved by Snap-on Tools Company and the information contained herein shall not be used in whole or in part without the express written consent of Snap-on Equipment.

Table of Contents

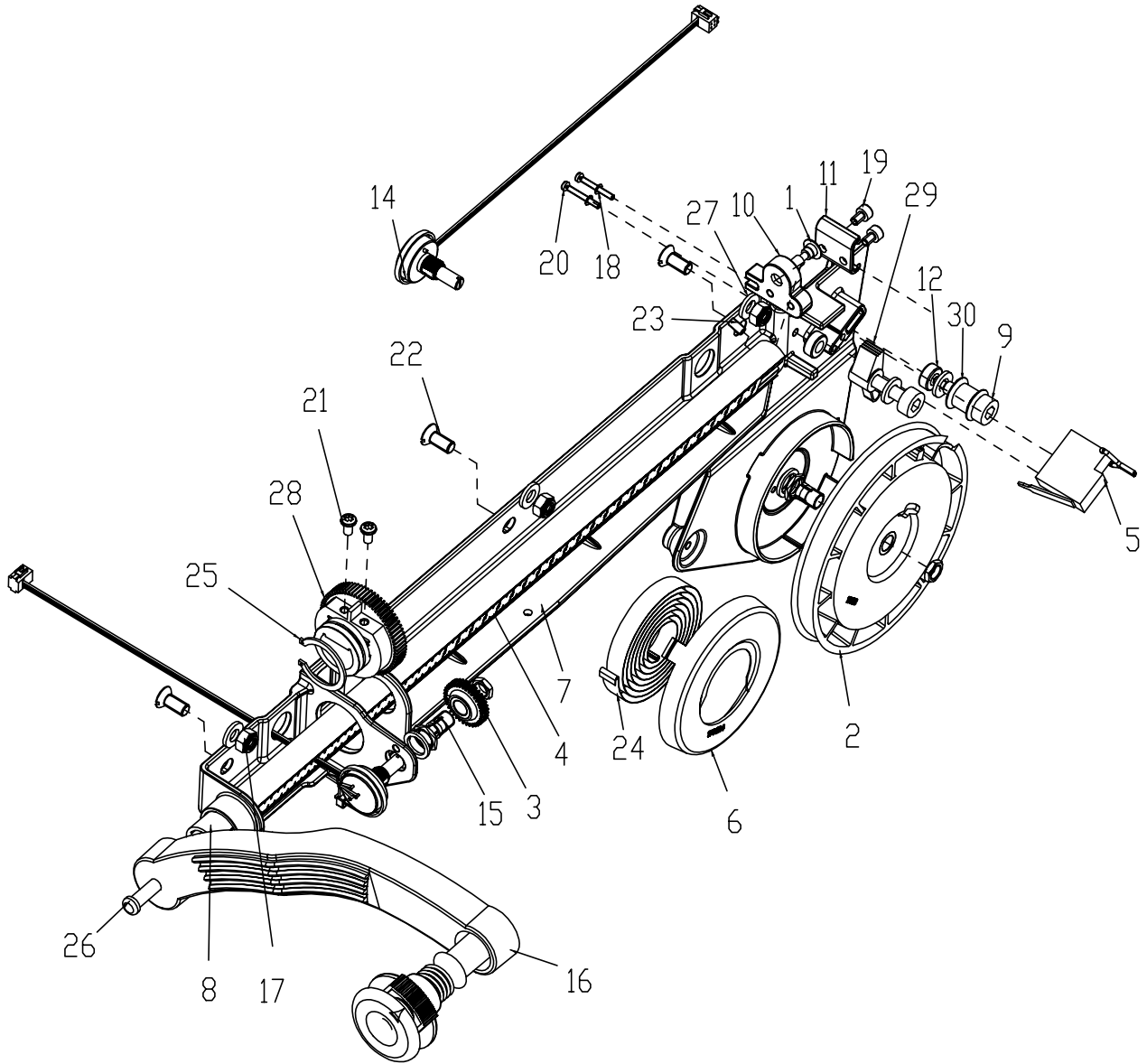
BALANCER ASSEMBLY	2
2D SAPE ASSEMBLY	4
VIBRATORY ASSEMBLY	6
VIBRATORY POWER CLAMP	7
CONES AND ACCESSORIES.....	8
WHEEL GUARD AND 3D SAPE	9

BALANCER ASSEMBLY
EAA0346J07A



ITEM	QTY	PARTNUMBER	DESCRIPTION
1	1	1-1548	WASHER-6MM SP-EXT
2	2	1-2509	SCREW-BHCS 1/4-20 X 5/8
3	1	1-2676	PLUG-HOLE 2 DIA BLACK
4	1	1-3176	PLUG-HOLE PLASTIC 1.5
5	4	1-3724	SCREW-M5 X 10 THREAD FORMING
6	1	1-6668	SPRING COMPRESSION
7	2	1-7104	SCREW-PAN HD M3X30 SLOTTED
8	1	1-7558	RIVET-POP
9	2	1-9541	WASHER-FLAT M3 DIN 125A
10	2	1-11633	HEX NUT
11	1	1-11833	NUT M8 STEEL
12	2	1-15033	NUT-KEPS M3-.5
13	2	1-16309	SCREW-SHCS-M6 X 16MM 8.8
14	8	1-17709	BOLT-M8 X 1.29 X 20MM
15	10	1-17741	WASHER-8MM
16	4	1-19923	SCREW-PHPHIL M6.3 X 19
17	4	1-20423	SCREW-SELF TAPPING M4.2 X13MM
18	2	1-47810	SCREW SET M8 X 8MM FLATPT
19	1	1-01515A	SCREW-HHMS 8M-1.25 91280A546
20	3	1-03725A	SCREW-PH SELF TAP M6.3X32PHIL
21	2	1-07439A	NUT-TINNERMAN 1/4-20
22	4	1-11326A	SCREW - TFS M6SF-TT M6X20
23	2	1-17559A	NUTSERT-M-6
24	4	1-17659A	NUTSERT-M10
25	10	1-18359A	NUTSERT-M8 X 1.25
26	1	1-47809A	SCREW-SHCS 3/8-16 X 1
27	2	1-53809A	SCREW-HHSC M8 X 55
28	2	1-5733A	NUT-JAM 3/8-16 UNC-2B CAD/ZN
29	3	2-3657	CABLE CLAMP (FLAT CABLE)
30	1	2-23201	TERMINAL-LUG POP RIVET
31	1	3-01509A	EMBEDDED PC ASSY
32	1	3-45226AD1	MEMORY CARD-PROG. BFH1000
33	4.17	5-06745A	WRAP-SPLIT HARNESS
34	1	6-02322A	CABLE ASSY-W/JACK SCREWS
35	4	8-7216	PLUG-HOLE 16MM
36	1	8-09619A	STRAIN RELIEF-FLAT CABLE
37	1	EAA0255J29A	TUBE-WHLGRD M CABNT ASSY
38	1	EAA0263G07A	BRAKE PEDAL ASSY
39	1	EAA0307G67A	KEYPAD GEO 6800/4800
40	1	EAA0313D88A	CARRIER-MONITOR BFH
41	1	EAA0338G36A	VIBRATORY (SEE TEXT)
42	1	EAA0338G83B	DIGITAL BOX ASSY-IBP
43	1	EAA0338G92A	STAND M1 SAPE 1D-2D ASSY
44	1	EAC0053J15A	BRAKE SPACER
45	1	EAC0053J16A	MICRO SWITCH PLATE
46	1	EAC0054P11A	WEIGHT TRAY-BFH 800
47	1	EAC0058D88A	DISPLAY-CASING BLACK GEODYNA
48	2	EAC0060G03A	BUSHING WHEELGUARD TUBE
49	1	EAM0003J21A	SPRING-EXTENSION WHEELGUARD HD
50	2	EAM0006G02A	WHEELGUARD TUBE RING NUT
51	1	EAS2021J43A	BACK PACK-M CABINET BASE
52	1	EAS2021J44A	BACK PACK-M CABINET TOP
53	1	EAS2058D94A	SUPPORT-MONITOR
54	2	EAS2067G29A	CLAMP-MONITOR TOWER HOOKBFH
55	1	EAS2081J96A	CABINET-M1 RED
56	1	EAS2086G67A	PLATE-SUPPORT EMBEDDED PC
57	1	EAS2103J17A	FIRESHIELD
58	1	EAS2103J29A	BRACKET-CRT TOWER
59	1	EAW0233J04A	CABLE ASSY
60	1	EAW0233J08A	CABLE-SWITCH ASSY
61	1	3-01908A	MONITOR-15 FLAT SCREEN
*	1	EAW0239D19A	EXTENSION WIRE-3D SAPE
*	1	EAW0240G48A	PWR CONN. ASSY-EMBEDDED PC

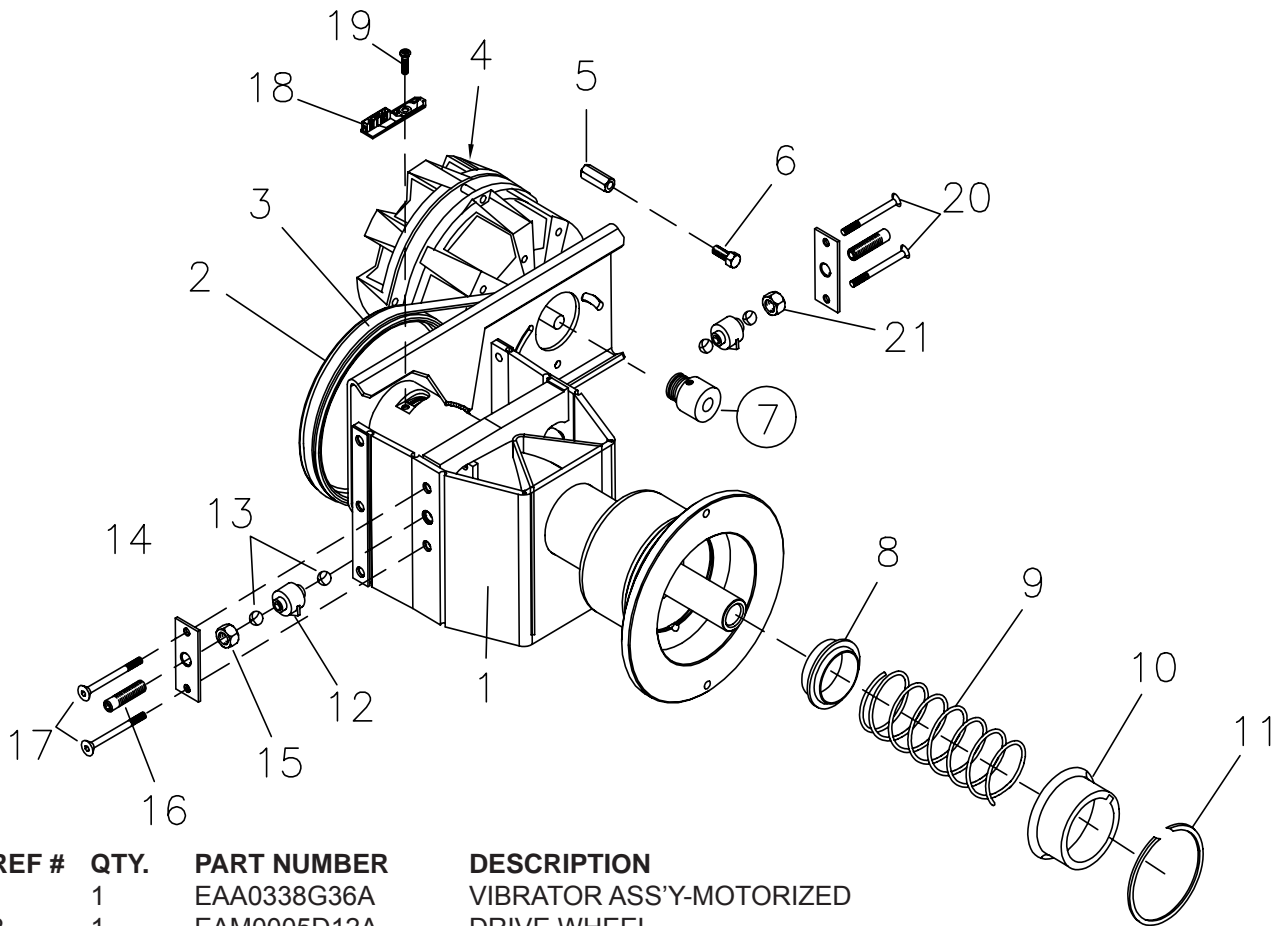
2D SAPE ASSEMBLY
EAA0338G92A



ITEM	QTY	PART NO	DESCRIPTION
1	1	EAM0021D34A	BOLT
2	1	EAC0058D06A	RIEMENHALTERROLLE MIT EINLEGETEIL ROPE REEL 290MM
3	1	EAC0058D13A	COG WHEEL 28 TEETH
4	1	EAL0349G31A	DISTANCE SCALE DECAL (MM)
5	1	2-09437A	CUTOUT BLADE RELAY 3VDC, 3.8W, TRACTIVE
6	1	EAC0058D58A	FEDER-SICHERUNGSDECKEL SAFETY COVER
7	1	EAC0087G60A	M1 SAPE SUPPORT
8	1	EAM0053G17A	STANDARD. ROD SAPE, M1
9	3	EAM0053G15A	STANDARD. ROLL PIN A.S.S
10	1	EAC0087G68A	STANDARD. TORSION LOCK
11	1	EAC0087G71A	STANDARD CALMPING PLATE
12	3	EAC0094G24A	STANDARD. SAPE A.S.S. SPACER
*	1	EAM0055G94A	STAND. SAPE TOOTHED BELT
14	2	EAA0266D20A	ROTATIVE TRANSDUCER 100HM
15	2	2-07657A	CLAMPING DEVICE W/NUT
16	1	EAA0277D94A	SAPE ARM EUROPE W/ EJECTOR
17	3	1-16633A	NUT,SELF LOCK. ALL-METAL M6 A2J DIN6925
18	2	1-20341A	WASHER, PLAIN A 2,7-ST- A2J UNI6592 DIN
19	2	1-46809	SCREW-HEX SOCKET HEAD CAP M4X6 8.8 -A2J
20	2	1-5904	SCREW FIL HD M 2.5 X 20MM DIN 84
21	2	1-11726A	SCREW, SELF TAPPING FOR PLASTIC D4X8MM
22	3	1-03405A	MSCR, OVAL HD M 6 X 14MM
23	1	1-38910	SCREW M4X8SET CUP ZP
24	1	1-03967A	SPRING-SAPE AUTO STOP SYSTEM
25	1	1-13377A	CIRCLIP-27MM X 1.20MM DIN 471
26	1	1-3824	SCREW-SELF TAP,6 X 12MM
27	6	1-9841	WASHER PLAIN, 6MM
28	1	EAC0058D12A	COG WHEEL - 56 TOOTH
29	1	EAC0058D29A	GEARTOOTH
30	2	EAM0005D60A	SMALL GUIDE

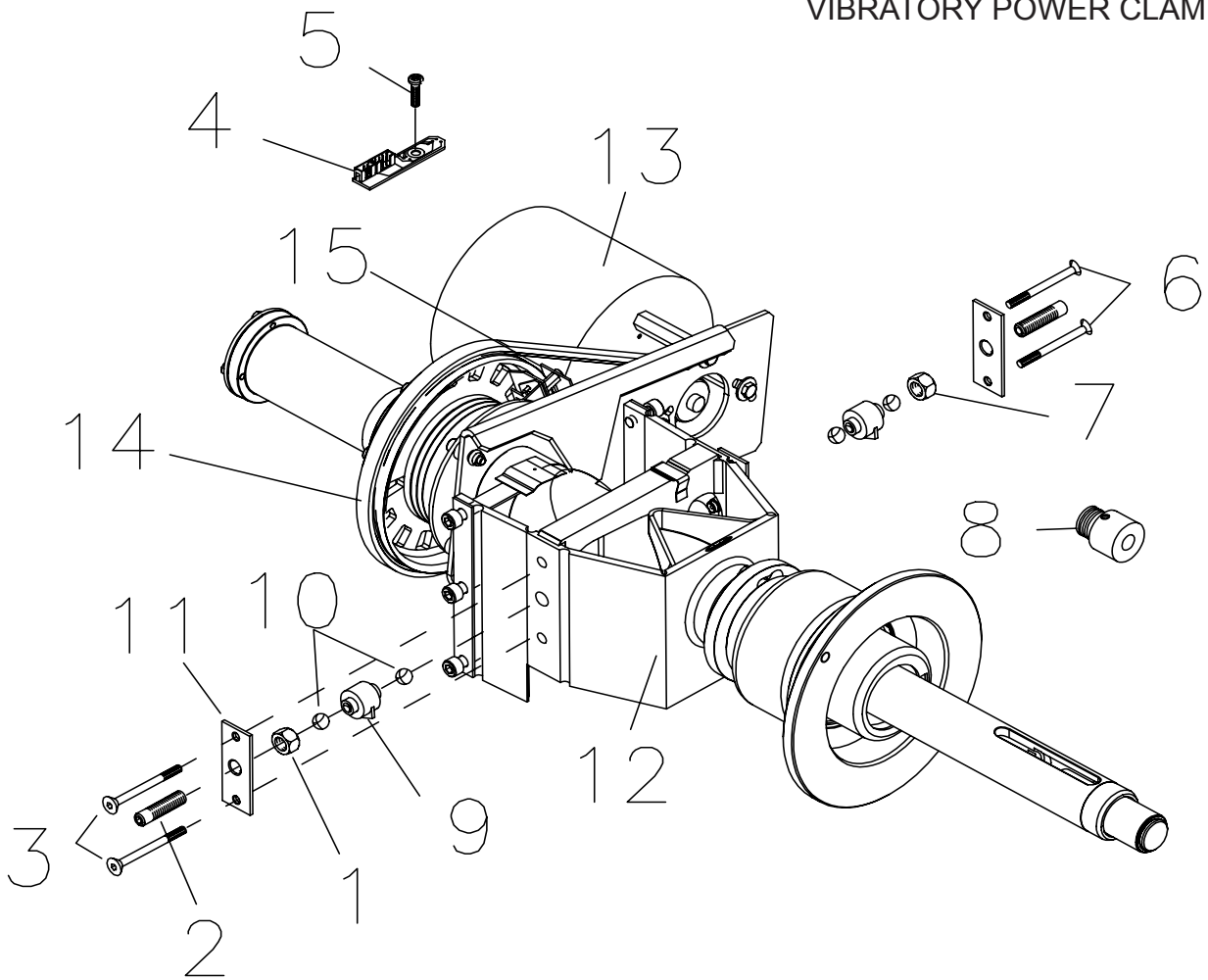
*NOT SHOWN IN ILLUSTRATION

VIBRATORY ASSEMBLY
EAA0338G36A



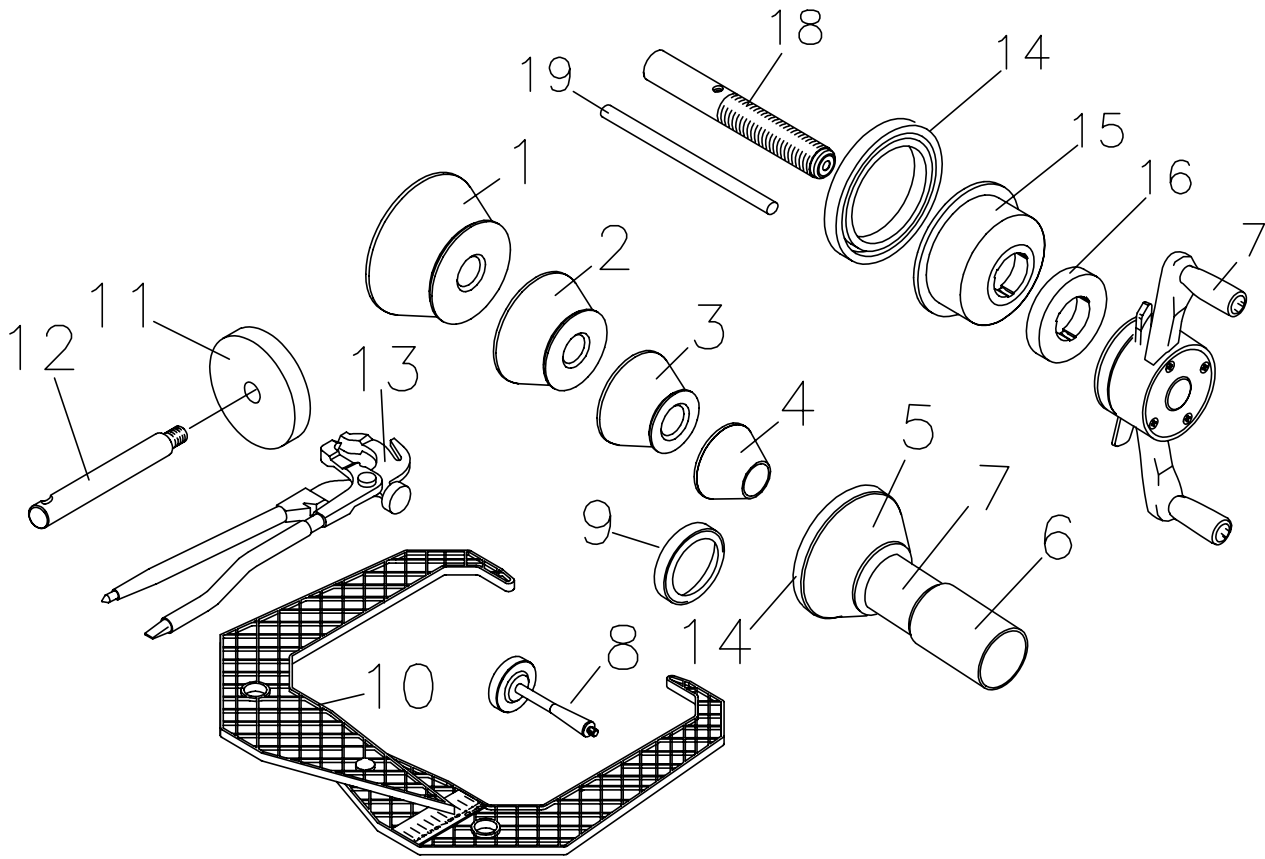
REF #	QTY.	PART NUMBER	DESCRIPTION
1	1	EAA0338G36A	VIBRATOR ASS'Y-MOTORIZED
2	1	EAM0005D12A	DRIVE WHEEL
3	1	8-3531	MULTIRIB BELT 5 PJ 711 DIN 7867
4	1	EAA0266D29A	MOTOR, AC 120W 1 PH 220-240V - 50/60 HZ
5	2	EAM0005D09A	MOTOR DISTANCE BOLT
6	1	1-30701	SCREW HEX HD M 6 X 12
7	1	EAM0005D08A	MOTOR PULLEY
8	1	EAC0058D03A	SPRING CENTERING RING
9	1	1-6498	SPRING - COMPRESSION 5 X 63 X 120
10	1	EAS2025D14A	SPRING CASE DEEP DRAW
11	1	1-13077	SNAP RING
12	1	EAA0260D59A	TRANSDUCER
13	4	8-1144	BALL, STEEL
14	2	1-2967	PRETENSION SPRING
15	1	1-11833	NUT-HEX M 10 X 1 DIN 934
16	2	EAM0005D07A	SETSCREW - HEX SOCKET M 10 X 1
17	2	1-19903A	SCREW HEX SOCKET / COUNTERSUNK M 4 X 65
18	1	EAA0344G00A	ENCODER PCB
19	1	1-13004	SCREW PHILLIP PAN HD M 4 X 6
20	2	1-17403	SCREW HEX SOCKET / COUNTERSUNK M 4 X 25
21	1	1-4034	NUT - HEX M 10 X 1 DIN 439
*	1	EAW0239D00A	RIBBON CABLE VIBRATORY
**	1	EAA0260D56A	BRAKE LEVER A CPL.
**	1	EAA0260D57A	BRAKE LEVER B CPL.

VIBRATORY POWER CLAMP



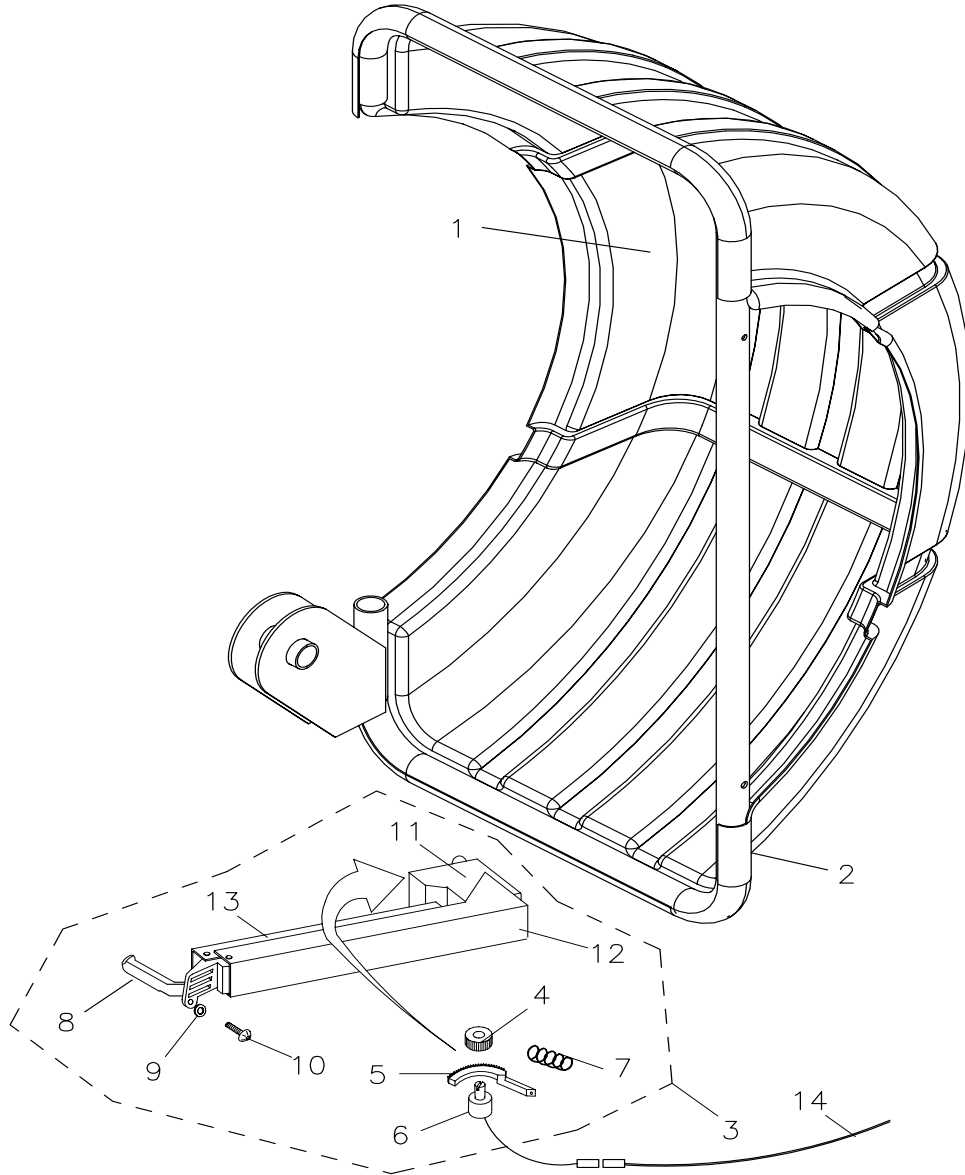
REF	QTY	PART NUMBER	DESCRIPTION
1	1	1-11833	NUT-HEX M 10 X 1 DIN 934
2	2	EAM0005D07A	SETSCREW - HEX SOCKET M 10 X 1
3	2	1-19903A	SCREW HEX SOCKET / COUNTERSUNK M 4 X 65
4	1	EAA0344G00A	ENCODER PCB
5	1	1-13004	SCREW PHILLIP PAN HD M 4 X 6
6	2	1-17403	SCREW HEX SOCKET / COUNTERSUNK M 4 X 25
7	1	1-4034	NUT - HEX M 10 X 1 DIN 439
8	1	EAM0005D08A	PULLEY SMALL
9	1	EAA0260D59A	TRANSDUCER
10	4	8-1144	BALL, STEEL
11	2	1-2967	PRETENSION SPRING
12	1	EAA0344G06A	VIBRATOR ASS'Y-MOTORIZED
13	1	EAA0266D29A	MOTOR 230V/50-60HZ
14	1	8-3531	MULTIRIB BELT 5 PJ 711 DIN 7867
15	1	EAP0201D20A	POWER CLAMP ENCODER
*	1	EAW0239D00A	RIBBON CABLE VIBRATORY

CONES AND ACCESSORIES



REF	QTY	PART NUMBER	DESCRIPTION
1	1	EAM0003J08A	CONE-TRUCK, 29 DEG
2	1	EAM0003J07A	CONE-LARGE
3	1	EAM0003J06A	CONE-SMALL
4	1	EAM0003J05A	CONE-SMALL
		EAA0307G54A	POWER CLAMP NUT ASSEMBLY
5	1	EAC0058D07A	CUP - LARGE PRESSURE
6	1	EAM0005D54A	PLASTIC SLEEVE
7	1	EAA0283D53A	POWER CLAMP NUT
8	1	EAM0005D40A	CALIBRATION WEIGHT
9	1	EAC0058D08A	SMALL PRESSURE DISK
10	1	EAA0247G21A	CALIPER-RIM WIDTH
11	4	EAC0060G02A	FLANGE - COVER,ACCESS
12	4	EAM0006G01A	HOOK - ACCESSORY STORAGE
13	1	00058839000	TOOL - PDQ WEIGHT
14	1	EAC0058D15A	RUBBER RING
15	1	EAM0058D07A	CUP - PRESSURE
16	1	EAC0058D08A	DISK - PRESSURE
17	1	EAA0263G66A	QUICK NUT
18	1	EAM0021D90A	40 MM STUB SHAFT
19	1	EAM0005D34	FASTENING ROD

WHEEL GUARD AND 3D SAPE



REF #	QTY.	PART NUMBER	DESCRIPTION
1	1	EAC0053J09A	COVER - WHEELGUARD
2	1	EAS2021J40A	WELDMENT - WHEELGUARD
3	1	EAA0260D45A	3D - P - SAPE
4	1	EAC0058D23A	COG WHEEL
5	1	EAC0058D31A	TOOTHED SPRING TONGUE
6	1	EAA0266D24A	ROTATIVE TRANSDUCER
7	1	1-04067A	TENSION SPRING
8	1	EAC0058D33A	TOUCHING DISK 3DP
9	1		WASHER
10	1		SCREW
11	1	EAC0058D34A	COVER PLATE
12	1	EAS2025D34A	OUTER SHEET
13	1	EAS2025D35A	INNER SHEET
14	1	EAW0239D19A	HARNES FROM POTETIOMETER TO EBOX
*	1	1-04167A	TORSION SPRING



John Bean Equipment
309 Exchange Ave.
Conway, AR 72032
501-450-1500

Notice: The information contained in this document is subject to change without notice. Snapon Equipment makes no warranty with regard to this material. Snapon Equipment shall not be liable for errors contained herein or for incidental consequential damages in connection with furnishings, performance, or use of this material.

This document contains proprietary information which is protected by copyright and patents. All rights are reserved. No part of this document may be photocopied, reproduced, or translated without prior written consent