

John Bean®

VPI SYSTEM IV

WHEEL BALANCER



EEWB516D

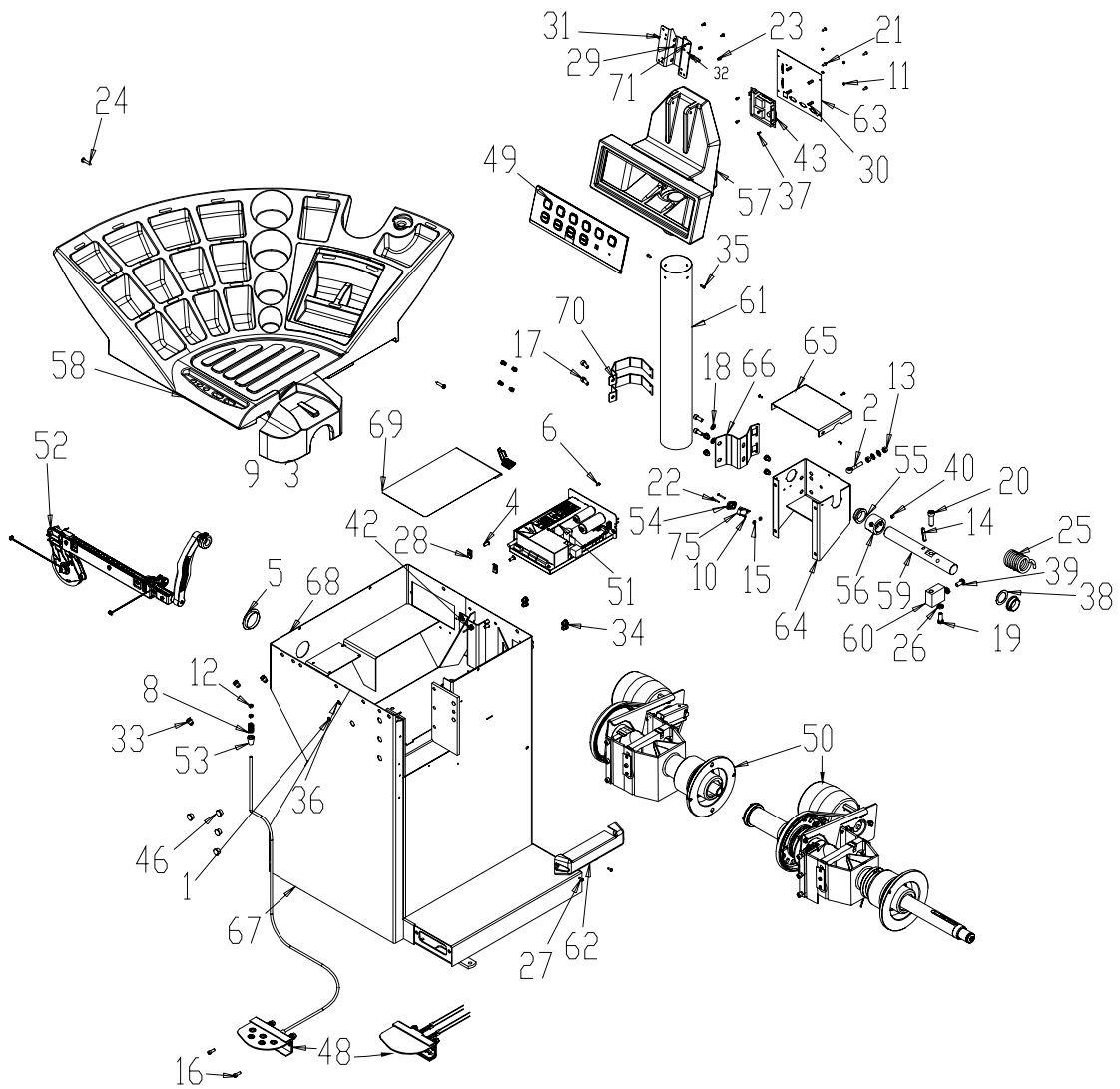
Parts Manual

All information contained or disclosed in this document is considered confidential and proprietary by Snap-on Equipment. All manufacturing, use, reproduction, and sales rights are reserved by Snap-on Tools Company and the information contained herein shall not be used in whole or in part without the express written consent of Snap-on Equipment.

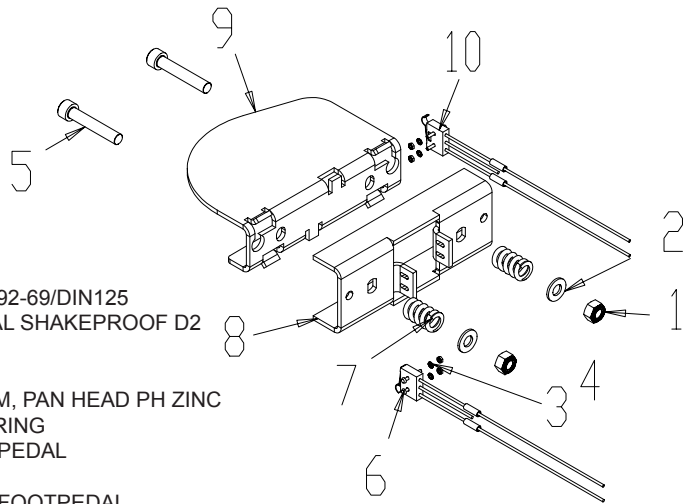
Table of Contents

| | |
|---------------------------------------|----|
| BALANCER ASSEMBLY | 2 |
| PEDAL ASSEMBLY POWER CLAMP | 2 |
| 2D SAPE ASSEMBLY | 4 |
| VIBRATORY ASSEMBLY (POWER CLAMP)..... | 6 |
| VIBRATORY ASSEMBLY | 7 |
| CONES AND ACCESSORIES..... | 8 |
| UPPER DISPLAY | 9 |
| WHEEL GUARD AND 3D SAPE | 10 |
| BOM | 11 |

BALANCER ASSEMBLY



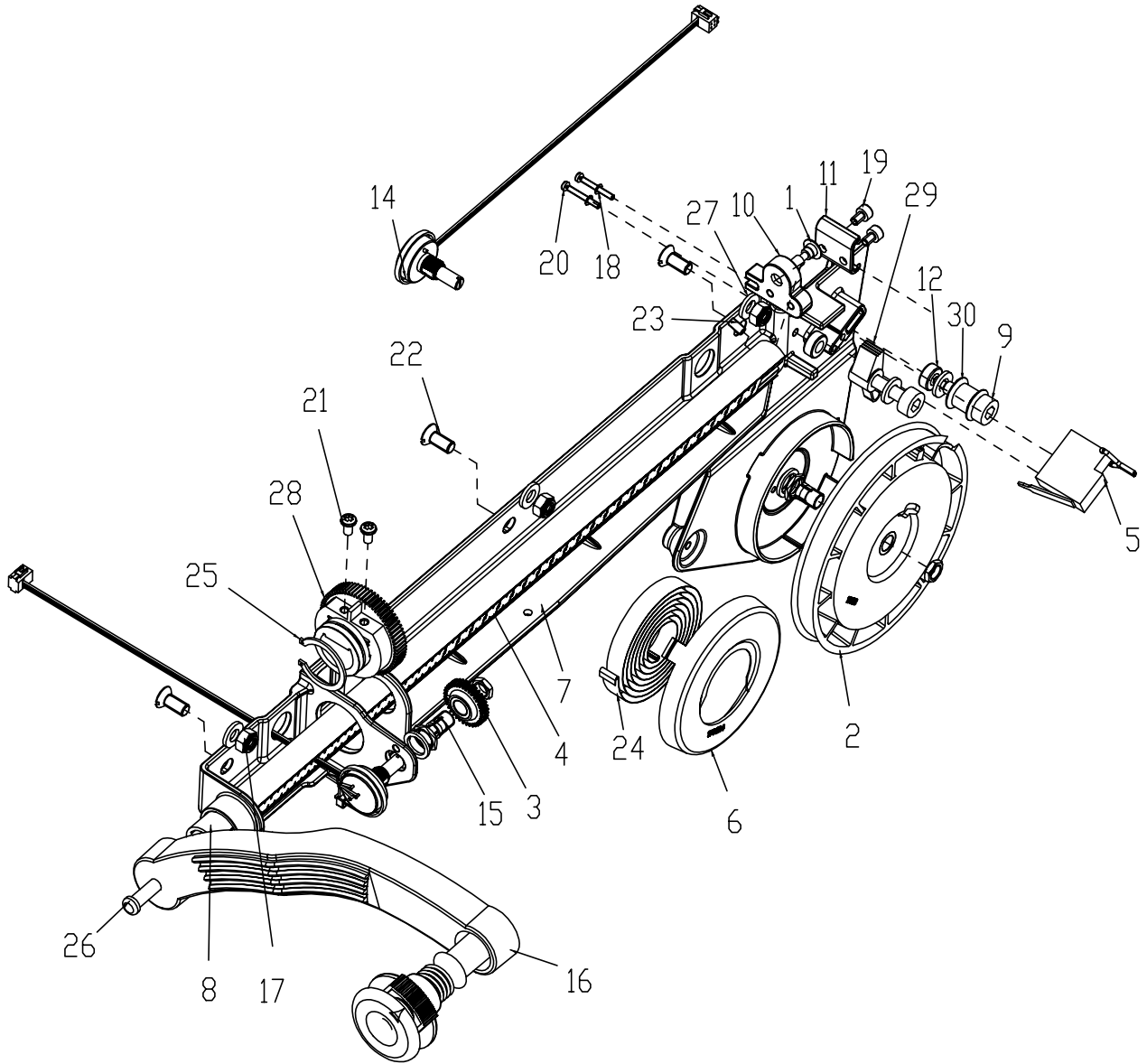
PEDAL ASSEMBLY POWER CLAMP



| SYM | REQD | PART NO | DESCRIPTION |
|-----|------|-------------|-------------------------------------|
| 1 | 2 | 1-10033 | NUT, HEX, M8 |
| 2 | 2 | 1-10041 | WASHER D.8 UNI6592-69/DIN125 |
| 3 | 4 | 1-1048 | WASHER, EXTERNAL SHAKEPROOF D2 |
| 4 | 4 | 1-11033 | NUT - HEX, M2 |
| 5 | 2 | 1-18209 | SHCS-M8 X 45 |
| 6 | 4 | 1-36606A | SCREW - M2 X 16MM, PAN HEAD PH ZINC |
| 7 | 2 | 1-6668 | COMPRESSION SPRING |
| 8 | 1 | EAS2113J93A | SUPPORT - BRAKE PEDAL |
| 9 | 1 | EAS2113J94A | FOOT PEDAL |
| 10 | 2 | EAW0233J46A | SWITCH ASSY - PC FOOTPEDAL |

| SYM | REQD | PART NO | DESCRIPTION |
|-----|------|-------------|--|
| 1 | 4 | 01101609000 | NUT-STOP 1/4-20 UNC-2B CAD |
| 2 | 1 | 1-01530 | EYEBOLT-M8 X 50 |
| 3 | 1 | 1-1548 | WASHER-EXT,SHAKEPROOF 6MM |
| 4 | 6 | 1-2509 | SCREW-BHCS, 1/4 - 20 X 5/8 |
| 5 | 1 | 1-2676 | PLUG-HOLE, 2"DIA |
| 6 | 5 | 1-3724 | SCREW-SELF TAP,5 X 10MM |
| 8 | 1 | 1-6668 | COMPRESSION SPRING |
| 9 | 1 | 1-7558 | POP RIVET-3/16" |
| 10 | 2 | 1-9541 | WASHER-FLAT,M3 DIN 125A |
| 11 | 4 | 1-11233 | NUT - HEX, M3 DIN 934 |
| 12 | 2 | 1-11633 | NUT-M6 X 5,2MMTHK, BLK |
| 13 | 2 | 1-11833 | NUT - M8 - X 1.25 DIN 934 |
| 14 | 1 | 1-12452 | PINS - STRAIGHT SLOTTED 8X45 DIN 1481 |
| 15 | 2 | 1-15033 | NUT-KEPS, M3 - .5 |
| 16 | 2 | 1-16309 | SCREW - SHCS, M6 X 16MM, |
| 17 | 8 | 1-17709 | SCREW - SHCS M8 X 20MM |
| 18 | 8 | 1-17741 | WASHER, 8MM DIN125A |
| 19 | 1 | 1-19109 | SHCS - M10 X 25MM |
| 20 | 1 | 1-20409 | SCREW TCEI M12X35 12.9 BR |
| 21 | 4 | 1-20423 | SCREW, SELF TAPPING M4.2 X 13MM |
| 22 | 2 | 1-27001 | SCREW,HEX HEAD MAC. M3X25 8.8 A2J DIN933 |
| 23 | 4 | 1-46809 | SCREW-HEX SOCKET HEAD CAP M4X6 8.8 -A2J |
| 24 | 3 | 1-03725A | SCREW-PH SELF TAP M6.3X32 PHIL |
| 25 | 1 | 1-04267A | SPRING-TORSION |
| 26 | 2 | 1-04634A | NUT - HEX, M10, 1,5MM PITCH, |
| 27 | 3 | 1-07424A | SCREW - PAN HD, 8-18 X 1/2 |
| 28 | 2 | 1-07439A | NUT - SPEED, "U" TYPE, |
| 29 | 2 | 1-11744A | WASHER - NYLON FLAT |
| 30 | 4 | 1-15661A | STANDOFF - HEX, M3 X 15MM BRASS |
| 31 | 2 | 1-16509A1 | SCREW - SHCS, M6 X 25MM, BLK |
| 32 | 6 | 1-17559A | NUTSERT - M6 |
| 33 | 4 | 1-17659A | NUTSERT - M10 |
| 34 | 8 | 1-18359A | NUTSERT, M8 |
| 35 | 2 | 1-18523A1 | SELF TAPPING SCREW D4,8X13MM |
| 36 | 4 | 1-20041A | WASHER - FLAT 18MM OD X 6.5MM ID X 1.5MM THK |
| 37 | 4 | 1-20504A | SCREW PAN HEAD |
| 38 | 1 | 1-22441A | SHIM RING 32X45X1 |
| 39 | 1 | 1-47709A | SHCS - M10 X 20MM |
| 40 | 1 | 1-49010A | SCREW, SOCKET WITH CUP POINT M8X8 |
| 41 | 3 | 2-3657 | CABLE CLAMP- FLAT CABLE |
| 42 | 1 | 2-23201 | TERMINAL LUG-6.3MM X .8MM POP RIVET |
| 43 | 1 | 3-03309A1 | EMBEDDED-PC, PROG. MEM. CARD |
| 44 | 1 | 5-06745A | WRAP - SPLIT HARNESS |
| 45 | 1 | 6-02322A | CABLE-EXTENTION SERIAL |
| 46 | 4 | 8-7216 | PLUG-HOLE, 16MM DIA |
| 47 | 2 | 8-09619A | STRAIN RELIEF - FLAT CABLE |
| 48 | 1 | EAA0263G07A | ASSY-BRAKE PEDAL |
| | | EAA0346J82A | ASSY - FOOT PEDAL POWER CLAMP |
| 49 | 1 | EAA0364G98A | KEYPAD - NEUTRAL GREY W/ SLIDER |
| 50 | 1 | EAA0338G36A | VIBR. MOT. UL IF40/28.5 |
| | | EAA0344G06A | V.S. "P" OPTIMA - UL |
| 51 | 1 | EAA0338G83B | ASSY - IBP DIGITAL BOX |
| 52 | 1 | EAA0346J73A | ASSY - SAPE, 1D-2D W/ AUTO STOP |
| 53 | 1 | EAC0053J15A | BRAKE SPACER |
| 54 | 1 | EAC0053J16A | MICROSWITCH PLATE |
| 55 | 2 | EAC0058D36A | WHEELGUARD BUSHING D.32 |
| 56 | 1 | EAC0058D38A | SCHALTRING SWITCH SEGMENT |
| 57 | 1 | EAC0094G36A | MONITOR AND KEYBOARD SUPP. |
| 58 | 1 | EAC0054P11A | BALCO WEIGHT-TRAY |
| 59 | 1 | EAM0021D02A | SHAFT - WHEEL GUARD M1 |
| 60 | 1 | EAM0021D39A | STOP PLATE 25MM |
| 61 | 1 | EAM0050J49A | TOWER - BALANCER TUBE |
| 62 | 1 | EAM0062G50A | VIBRATORY SYSTEM COVER |
| 63 | 1 | EAS2086G67A | SUPPORT PLATE |
| 64 | 1 | EAS2103J53A | BACKPACK - M2 CABINET |
| 65 | 1 | EAS2103J54A | COVER - M2 BACKPACK |
| 66 | 1 | EAS2103J58A | PLATE -TOWER BRACKET |
| 67 | 1 | EAS2113J02A | CABINET - M2 US, RED RAL 3000 |
| 68 | 1 | EAS2113J27A | COVER - REAR, M2 CABINET |
| 69 | 1 | EAS2113J53A | SHIELD - FIRE |
| 70 | 2 | EAS2113J54A | CLAMP - BALANCER TOWER |
| 71 | 1 | EAS2113J55A | BRACKET - MONITOR MOUNT |
| 74 | 1 | EAW0233J04A | CABLE - JBC DISPLAY |
| 75 | 1 | EAW0233J08A | CABLE-SWITCH ASSY |
| 76 | 1 | EAW0233J44A | CABLE - EMBEDDED PC POWER |

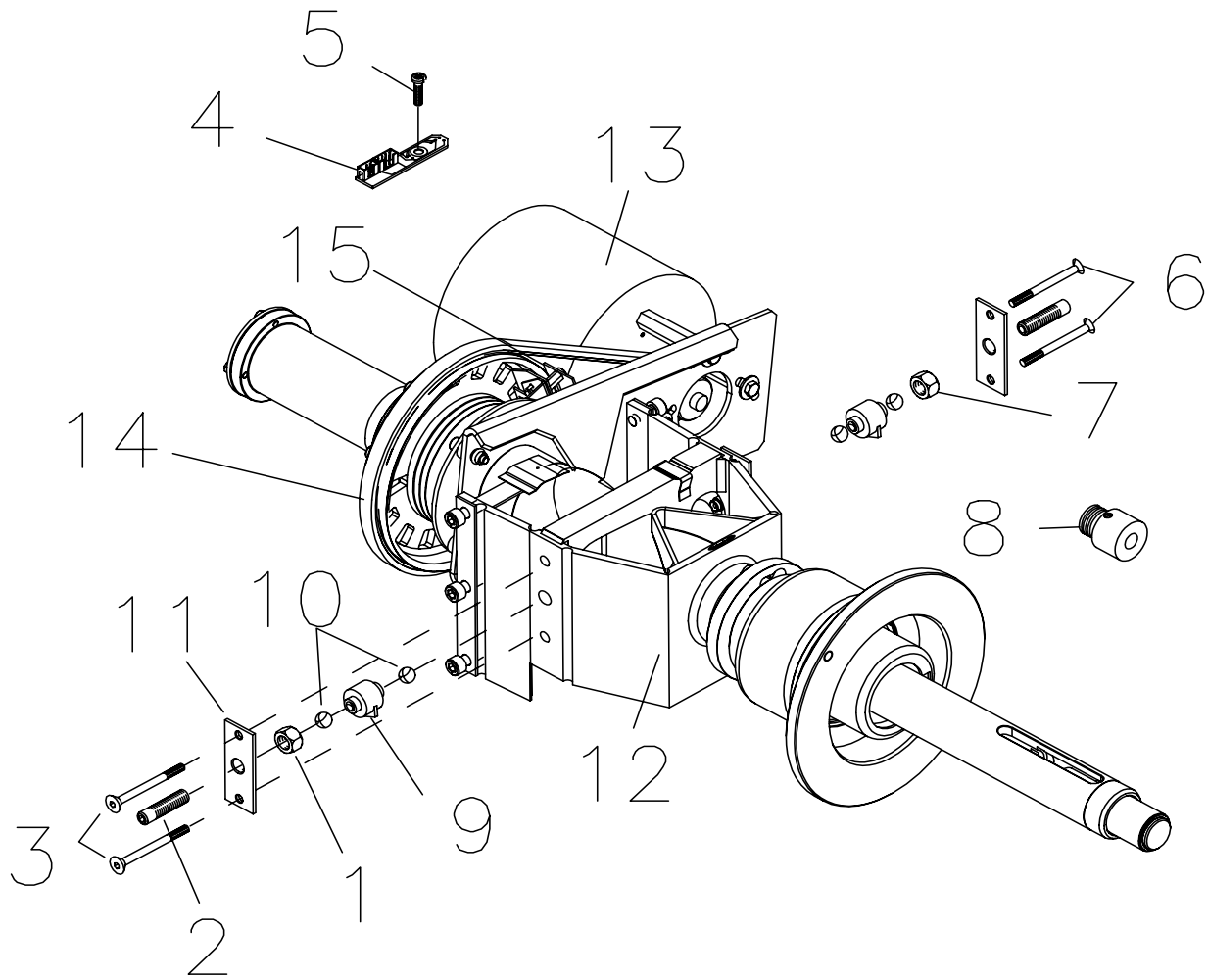
2D SAPE ASSEMBLY
EAA0346J73A



| SYM | REQD | PART NO | DESCRIPTION |
|-----|------|-------------|---|
| 1 | 3 | 1-27903A | SCREW - M6 X 14MM FHMS, SKT DIN 7991 |
| 2 | 1 | 1-03967A | SPRING-SAPE AUTO STOP SYSTEM |
| 3 | 3 | 1-25433A | NUT-M6 KEPS, SERRATED LW ZINC |
| 4 | 2 | 1-11726A | SCREW, SELF TAPPING FOR PLASTIC |
| 5 | 1 | 1-13377A | CIRCLIP-27MM X 1.20MM DIN 471 |
| 7 | 2 | 1-17223A | SHEETMETAL SCREW PHIL HEAD |
| 8 | 2 | 1-20341A | WASHER, PLAIN A 2,7-ST- A2J UNI6592 DIN |
| 9 | 1 | 1-3824 | SCREW-SELF TAP,6 X 12MM |
| 10 | 2 | 1-3924 | SCREW-PHMS, M4.8 X 8MM SELF TAP |
| 11 | 2 | 1-5904 | SCREW FIL HD M 2.5 X 20MM DIN 84 |
| 12 | 3 | 1-9841 | WASHER PLAIN, 6MM |
| 13 | 2 | 2-07657A | CLAMPING DEVICE W/NUT |
| 14 | 1 | 2-09437A | CUTOUT BLADE RELAY 3VDC, 3.8W, TRACTIVE |
| 15 | 1 | 8-1940 | PIN-PUSHIN,NYLON, .165 X 1.062 |
| 16 | 2 | EAA0266D20A | ROTATIVE TRANSDUCER 100HM |
| 17 | 1 | EAA0277D94A | SAPE ARM EUROPE W/ EJECTOR |
| 18 | 1 | EAC0058D06A | RIEMENHALTEROLLE MIT EINLEGETEIL |
| 19 | 1 | EAC0058D12A | COG WHEEL - 56 TOOTH |
| 20 | 1 | EAC0058D13A | COG WHEEL 28 TEETH |
| 21 | 1 | EAC0058D29A | GEARTOOTH |
| 22 | 1 | EAC0058D58A | FEDER-SICHERUNGSDECKEL SAFETY COVER |
| 23 | 1 | EAC0087G60A | M1 SAPE SUPPORT |
| 24 | 3 | EAC0094G24A | STANDARD. SAPE A.S.S. SPACER |
| 25 | 1 | EAL0349G31A | DISTANCE SCALE |
| 26 | 1 | EAM0005D35A | REEL-GUIDING,SAPE |
| 27 | 2 | EAM0005D60A | SMALL GUIDE |
| 28 | 3 | EAM0053G15A | STANDARD. ROLL PIN A.S.S |
| 29 | 1 | EAM0053G17A | STANDARD. ROD SAPE, M1 |
| 30 | 1 | EAM0055G94A | STAND. SAPE A.S.S. TOOTHED BELT |
| 31 | 1 | EAS2113J89A | BRACKET - SAPE BELT WHEEL |
| 32 | 1 | EAS2113J90A | BRACKET-SAPE BELT HOLDER |

VIBRATORY ASSEMBLY (POWER CLAMP)

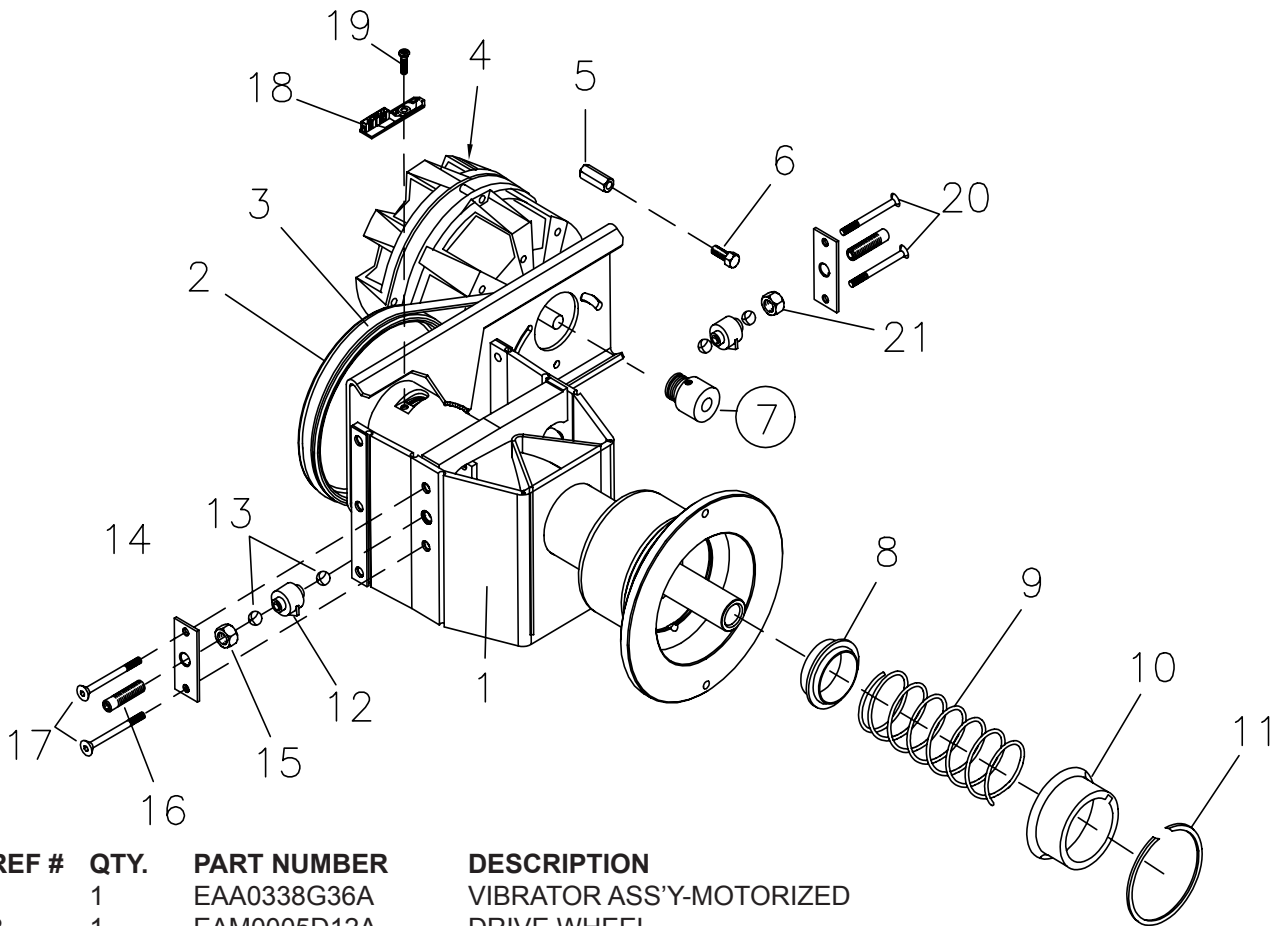
EAA0344G06A



| REF | QTY | PART NUMBER | DESCRIPTION |
|-----|-----|-------------|---|
| 1 | 1 | 1-11833 | NUT-HEX M 10 X 1 DIN 934 |
| 2 | 2 | EAM0005D07A | SETSCREW - HEX SOCKET M 10 X 1 |
| 3 | 2 | 1-19903A | SCREW HEX SOCKET / COUNTERSUNK M 4 X 65 |
| 4 | 1 | EAA0344G00A | ENCODER PCB |
| 5 | 1 | 1-13004 | SCREW PHILLIP PAN HD M 4 X 6 |
| 6 | 2 | 1-17403 | SCREW HEX SOCKET / COUNTERSUNK M 4 X 25 |
| 7 | 1 | 1-4034 | NUT - HEX M 10 X 1 DIN 439 |
| 8 | 1 | EAM0005D08A | PULLEY SMALL |
| 9 | 1 | EAA0260D59A | TRANSDUCER |
| 10 | 4 | 8-1144 | BALL, STEEL |
| 11 | 2 | 1-2967 | PRETENSION SPRING |
| 12 | 1 | EAA0344G06A | VIBRATOR ASS'Y-MOTORIZED |
| 13 | 1 | EAA0266D29A | MOTOR 230V/50-60HZ |
| 14 | 1 | 8-3531 | MULTIRIB BELT 5 PJ 711 DIN 7867 |
| 15 | 1 | EAP0201D20A | POWER CLAMP ENCODER |
| * | 1 | EAW0239D00A | RIBBON CABLE VIBRATORY |

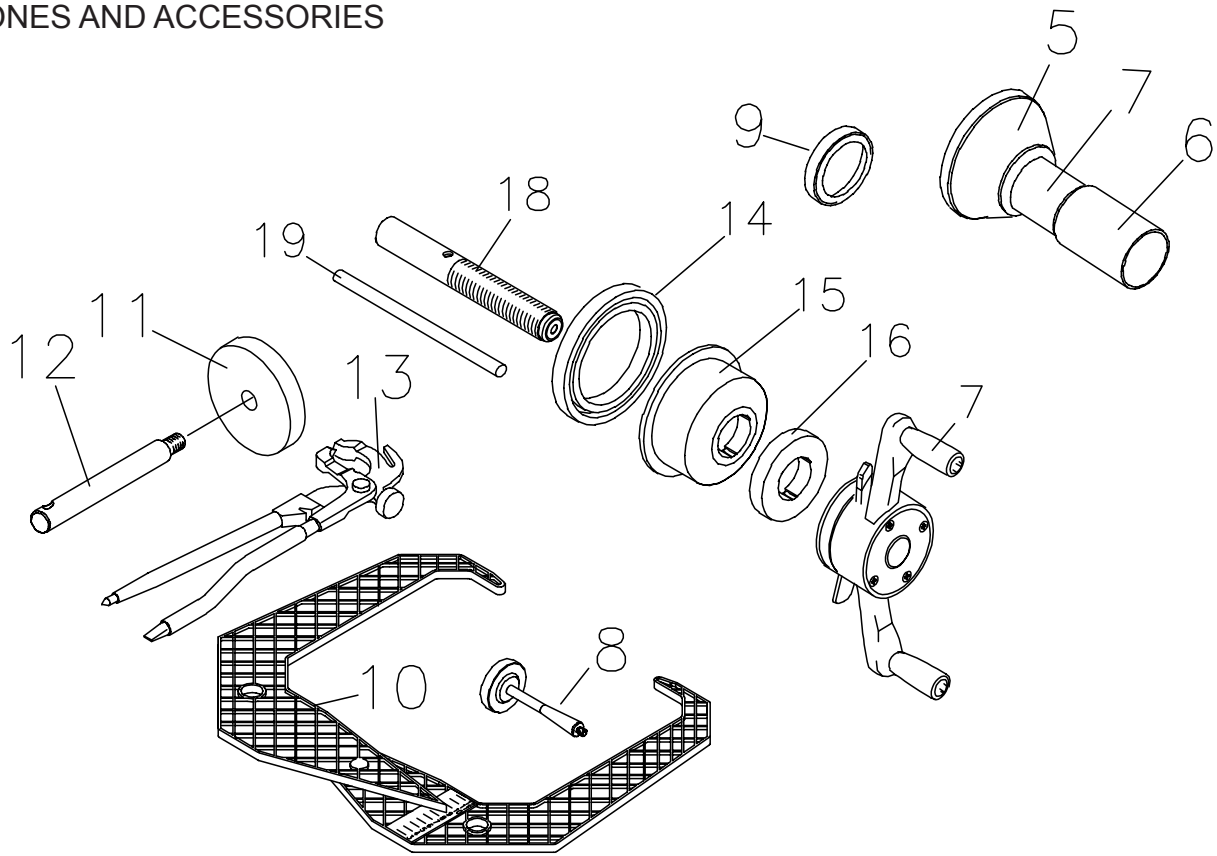
VIBRATORY ASSEMBLY

EAA0338G36A



| REF # | QTY. | PART NUMBER | DESCRIPTION |
|-------|------|-------------|---|
| 1 | 1 | EAA0338G36A | VIBRATOR ASS'Y-MOTORIZED |
| 2 | 1 | EAM0005D12A | DRIVE WHEEL |
| 3 | 1 | 8-3531 | MULTIRIB BELT 5 PJ 711 DIN 7867 |
| 4 | 1 | EAA0266D29A | MOTOR, AC 120W 1 PH 220-240V - 50/60 HZ |
| 5 | 2 | EAM0005D09A | MOTOR DISTANCE BOLT |
| 6 | 1 | 1-30701 | SCREW HEX HD M 6 X 12 |
| 7 | 1 | EAM0005D08A | MOTOR PULLEY |
| 8 | 1 | EAC0058D03A | SPRING CENTERING RING |
| 9 | 1 | 1-6498 | SPRING - COMPRESSION 5 X 63 X 120 |
| 10 | 1 | EAS2025D14A | SPRING CASE DEEP DRAW |
| 11 | 1 | 1-13077 | SNAP RING |
| 12 | 1 | EAA0260D59A | TRANSDUCER |
| 13 | 4 | 8-1144 | BALL, STEEL |
| 14 | 2 | 1-2967 | PRETENSION SPRING |
| 15 | 1 | 1-11833 | NUT-HEX M 10 X 1 DIN 934 |
| 16 | 2 | EAM0005D07A | SETSCREW - HEX SOCKET M 10 X 1 |
| 17 | 2 | 1-19903A | SCREW HEX SOCKET / COUNTERSUNK M 4 X 65 |
| 18 | 1 | EAA0344G00A | ENCODER PCB |
| 19 | 1 | 1-13004 | SCREW PHILLIP PAN HD M 4 X 6 |
| 20 | 2 | 1-17403 | SCREW HEX SOCKET / COUNTERSUNK M 4 X 25 |
| 21 | 1 | 1-4034 | NUT - HEX M 10 X 1 DIN 439 |
| * | 1 | EAW0239D00A | RIBBON CABLE VIBRATORY |
| ** | 1 | EAA0260D56A | BRAKE LEVER A CPL. |
| ** | 1 | EAA0260D57A | BRAKE LEVER B CPL. |

CONES AND ACCESSORIES



| REF | QTY | PART NUMBER | DESCRIPTION |
|-----|-----|--------------------|---------------------------------|
| | | EAA0307G54A | POWER CLAMP NUT ASSEMBLY |
| 5 | 1 | EAC0058D07A | CUP - LARGE PRESSURE |
| 6 | 1 | EAM0005D54A | PLASTIC SLEEVE |
| 7 | 1 | EAA0283D53A | POWER CLAMP NUT |
| 8 | 1 | EAM0005D40A | CALIBRATION WEIGHT |
| 9 | 1 | EAC0058D08A | SMALL PRESSURE DISK |
| 10 | 1 | EAA0247G21A | CALIPER-RIM WIDTH |
| 11 | 4 | EAC0060G02A | FLANGE - COVER,ACCESS |
| 12 | 4 | EAM0006G01A | HOOK - ACCESSORY STORAGE |
| 13 | 1 | 00058839000 | TOOL - PDQ WEIGHT |
| 14 | 1 | EAC0058D15A | RUBBER RING |
| 15 | 1 | EAM0058D07A | CUP - PRESSURE |
| 16 | 1 | EAC0058D08A | DISK - PRESSURE |
| 17 | 1 | EAA0263G66A | QUICK NUT |
| 18 | 1 | EAM0021D90A | 40 MM STUB SHAFT |
| 19 | 1 | EAM0005D34 | FASTENING ROD |

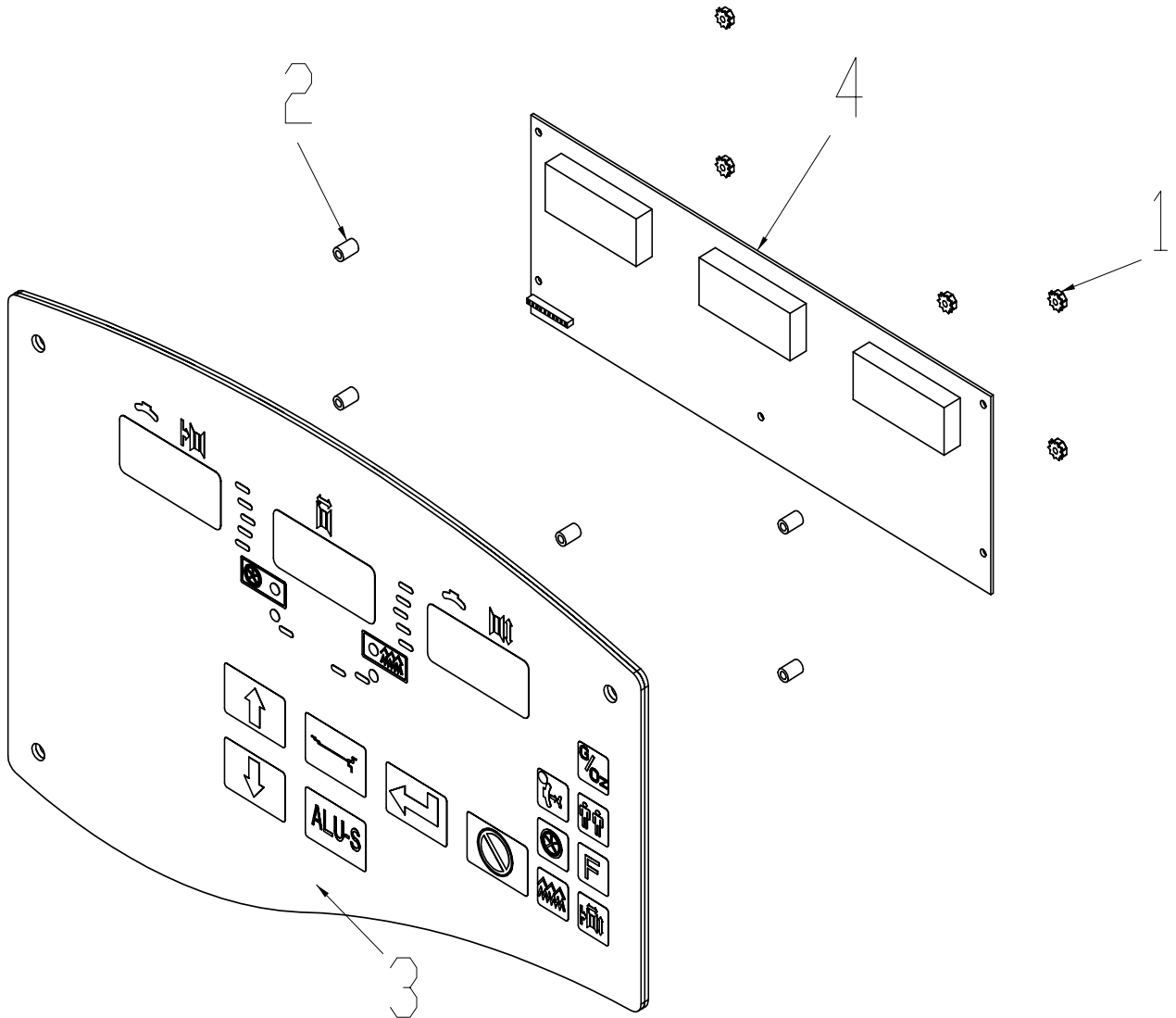
4 CONE KIT

| | |
|-------------|---------------------------------------|
| EAM0003J08A | CONE, 89-132 MM (3.50 - 5.20 INCHES) |
| EAM0003J07A | CONE, 71 - 99 MM (3.23 - 3.90 INCHES) |
| EAM0003J06A | CONE, 56 - 84 MM (2.67 - 3.35 INCHES) |
| EAM0003J05A | CONE, 43 -63 MM (1.66 - 2.50 INCHES) |

7 CONE KIT

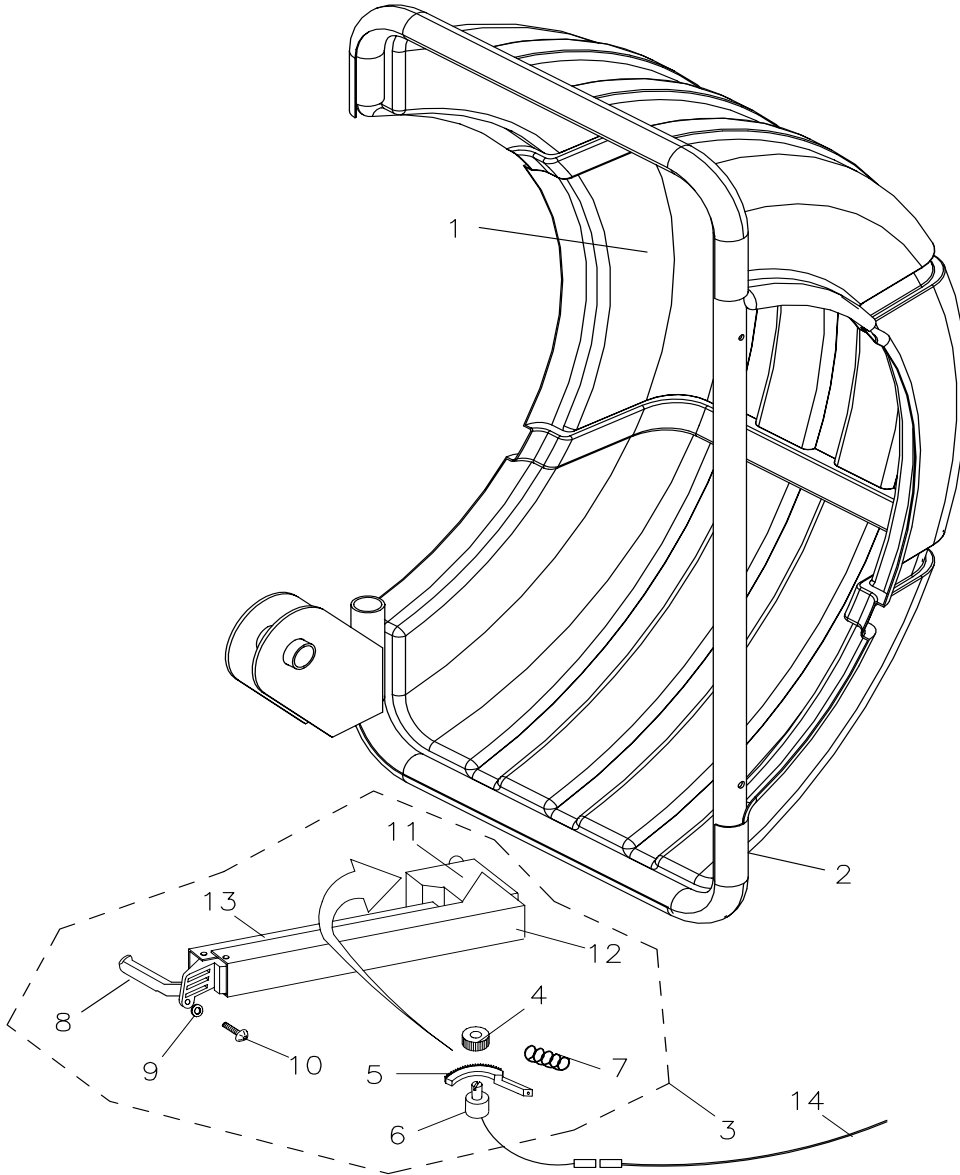
| | |
|-------------|-----------------------------------|
| EAM0003J64A | CONE - #1, MACHINED (1.70 - 2.23) |
| EAM0003J65A | CONE - #2, MACHINED (2.30 - |
| EAM0003J66A | CONE - #3, MACHINED (2.37 - |
| EAM0003J67A | CONE - #4, MACHINED (2.73 |
| EAM0003J68A | CONE - #5, MACHINED (3.07 |
| EAM0003J69A | CONE - #6, MACHINED (3.42 |
| EAM0003J70A | CONE - #7, MACHINED (4.210 |

UPPER DISPLAY
EAA0346J92A



| SYM | QTY | PART NO | DESCRIPTION |
|-----|-----|-------------|-----------------------------------|
| 1 | 5 | 1-15033 | NUT-KEPS, M3 - .5 |
| 2 | 5 | 1-11062A | SPACER- 1/4" X 3/8" |
| 3 | 1 | EAA0346J98A | DISPLAY PANEL/ MEMBRANE SWITCH |
| 4 | 1 | EAP0192P80A | PCB ASS'Y-DISPLAY, JB VPI SYS III |

WHEEL GUARD AND 3D SAPE



| REF # | QTY | REQ. | PART NUMBER | DESCRIPTION |
|-------|-----|-------------|-------------|----------------------------------|
| 1 | 1 | EAC0053J09A | | COVER - WHEELGUARD |
| 2 | 1 | EAS2021J40A | | WELDMENT - WHEELGUARD |
| 3 | 1 | EAA0260D45A | | 3D - P - SAPE |
| 4 | 1 | EAC0058D23A | | COG WHEEL |
| 5 | 1 | EAC0058D31A | | TOOTHED SPRING TONGUE |
| 6 | 1 | EAA0266D24A | | ROTATIVE TRANSDUCER |
| 7 | 1 | 1-04067A | | TENSION SPRING |
| 8 | 1 | EAC0058D33A | | TOUCHING DISK 3DP |
| 9 | 1 | | | WASHER |
| 10 | 1 | | | SCREW |
| 11 | 1 | EAC0058D34A | | COVER PLATE |
| 12 | 1 | EAS2025D34A | | OUTER SHEET |
| 13 | 1 | EAS2025D35A | | INNER SHEET |
| 14 | 1 | EAW0239D19A | | HARNES FROM POTETIOMETER TO EBOX |
| * | 1 | 1-04167A | | TORSION SPRING |

BOM

| REQD | PART NUMBER | DESCRIPTION |
|------|-------------|--------------------------------|
| 3 | 1-01215A | SCREW-LAG, 5/16 X 1/5 |
| 2 | 1-04076A | HOLE PLUG - 1.5" BLACK |
| 1 | 1-1101 | SCREW-HHCS, 3/8 -16 X 2 |
| 3 | 1-2541 | WASHER-FLAT, 5/16 |
| 1 | 1-8133 | NUT-KEPS 3/8 - 16 |
| 6 | 2-3657 | CABLE CLAMP (FLAT) |
| 1 | 3-03708A | MONITOR-LCD 17W |
| 1 | 5403 | CERTIFICATE-INSTALL REGISTRAT |
| 1 | 58839 | WEIGHT TOOLS |
| 1 | 8-40660A | CARTON - OPTIMA |
| 1 | EAA0247G21A | CALIPER-RIM WIDTH |
| 1 | EAA0263G79A | QUICKNUT KIT-W/HANDLES |
| 1 | EAA0348G73A | SAPE - 3D W/ ADJUSTABLE SPRING |
| 1 | EAA0369J05A | ASSY - BALANCER JB VPI SYS IV |
| 1 | EAC0053J09A | COVER-WHEELGUARD Y2K |
| 4 | EAC0060G02A | FLANGE-COVER, ACC HOOK |
| 1 | EAL0307L00A | LABEL-UL |
| 1 | EAL0341J96A | LABEL – BALANCER WARING, REAR |
| 1 | EAL0341J97A | LABEL – BALANCER WARING, SIDE |
| 2 | 1-07024A | SCREW - HH W WASHER M6X10 |
| 1 | EAL0420J10A | LABEL – JOHN BEAN, BAL |
| 1 | EAL0343J76A | LABEL - ELEC/SERIAL |
| 1 | EAL0341J44A | LABEL - ATTENTION, MAX WEIGHT |
| 1 | EAL0341J60A | LABEL- PATENT, WHEEL BALANCER |
| 1 | EAL0420J14A | DECAL - JB VPI SYS IV |
| 4 | 5-05245A | CABLE TIE – 8" |
| 2ft | 01122633000 | SPLIT LOOM- WIRE COVER 3/8 |
| 1 | 4500-0029 | TIE CABLE (BLACK) |
| 1 | EAM0005D40A | CALIBRATION WEIGHT |
| 4 | EAM0006G01A | HOOK-ACCESSORY STORAGE |
| 1 | EAM0050J00A | TUBE ASSY-WHEELGUARD 44 HNA |
| 1 | EAX0039J02A | CORD-POWER 230V PIGTAIL |
| 1 | ZEEWB516D9 | LIT PACK-VPI SYSTEM IV |
| 1 | 00089209000 | CORD-POWER ADAPTER 12 |
| 1 | 3-60826AF1 | MEMORY CARD PROG EPC NEW GUI |
| 1 | EA0392J89A | LABEL – CUST SERV JBC |



John Bean Equipment
309 Exchange Ave.
Conway, AR 72032
501-450-1500

Notice: The information contained in this document is subject to change without notice. Snaon Equipment makes no warranty with regard to this material. Snaon Equipment shall not be liable for errors contained herein or for incidental consequential damages in connection with furnishings, performance, or use of this material.

This document contains proprietary information which is protected by copyright and patents. All rights are reserved. No part of this document may be photocopied, reproduced, or translated without prior written consent of Snaon Equipment.