



VPI SYSTEM I

WHEEL BALANCER



Parts Manual

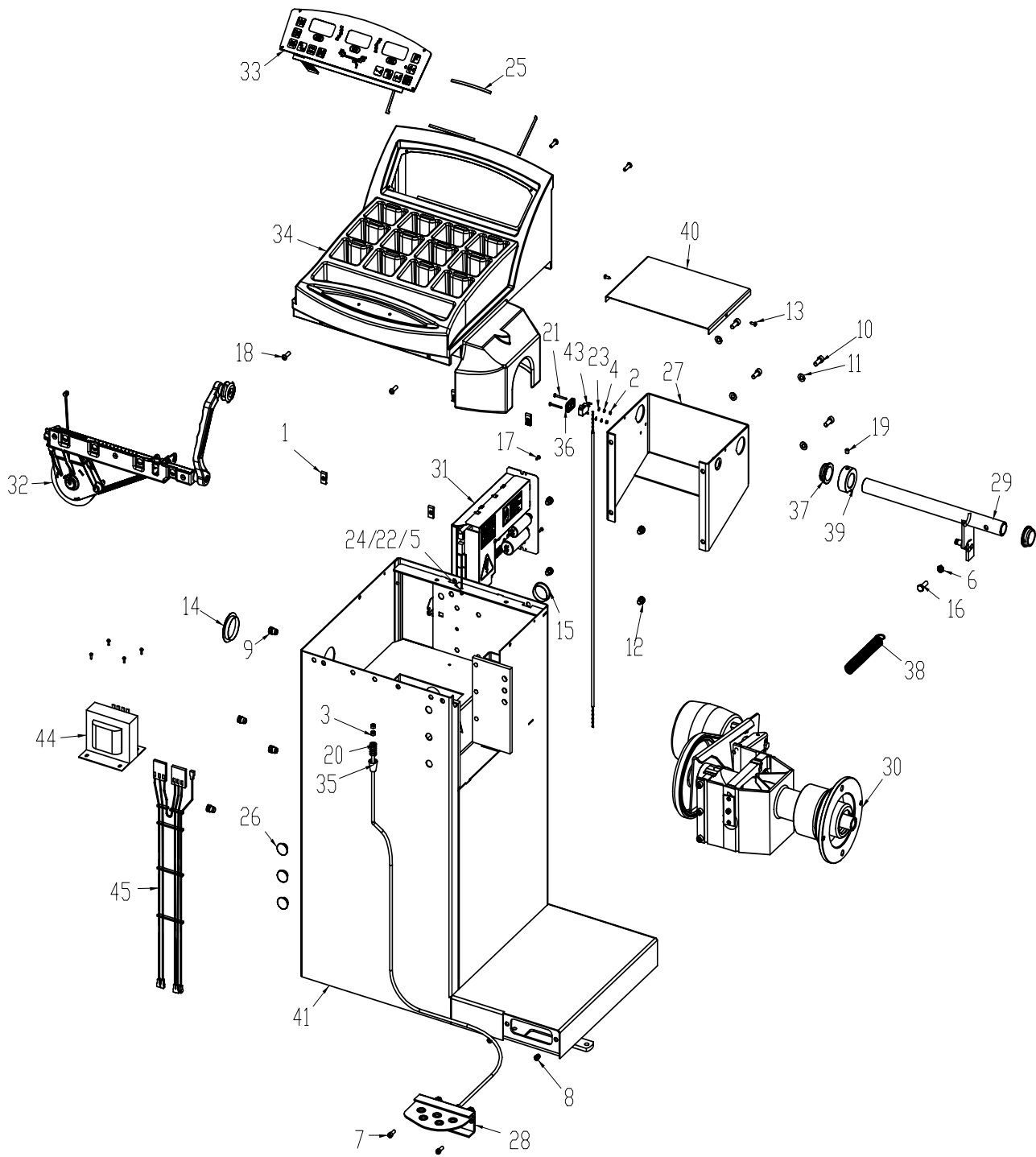
TEEWB504B3

All information contained or disclosed in this document is considered confidential and proprietary by Snap-on Equipment. All manufacturing, use, reproduction, and sales rights are reserved by Snap-on Equipment and the information contained herein shall not be used in whole or in part without the express written consent of Snap-on Equipment.

Table of Contents

BALANCER ASSEMBLY	2
UPPER DISPLAY	4
1D SAPE ASSEMBLY	5
VIBRATORY ASSEMBLY	6
CONES AND ACCESSORIES.....	7

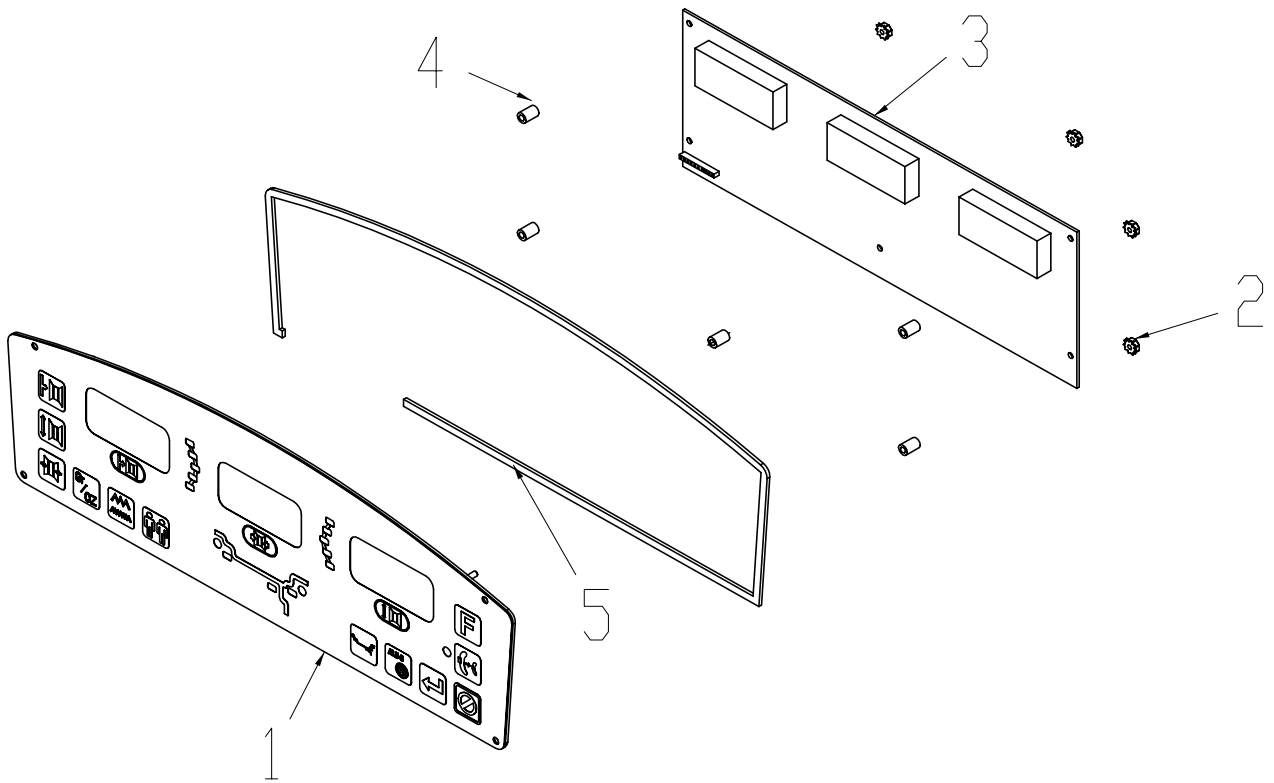
BALANCER ASSEMBLY
EAA0346J10A



SYM	QTY	PART NO	DESCRIPTION
1	4	1-07439A	NUT - SPEED, "U" TYPE,
2	2	1-11233	NUT - HEX, M3 DIN 934
3	2	1-11633	NUT-M6 X 5,2MMTHK, BLK
4	2	1-1248	WASHER SHAKE PROOF, M3
5	1	1-1548	WASHER-EXT,SHAKEPROOF 6MM
6	1	1-15933A	NUT - HEX, M8 X 1.25 DIN 936, UNI5589
7	2	1-16309	SCREW - SHCS, M6 X 16MM,
8	2	1-17559A	NUTSERT - M6
9	4	1-17659A	NUTSERT - M10
10	4	1-17709	SCREW - SHCS M8 X 20MM
11	4	1-17741	WASHER, 8MM DIN125A
12	4	1-18359A	NUTSERT, M8
13	2	1-20423	SCREW, SELF TAPPING M4.2 X 13MM
14	1	1-2676	PLUG-HOLE, 2"DIA
15	1	1-3176	PLUG, 1.50DIA.
16	1	1-32701	SCREW - HHMS 8M X 25MM
17	6	1-3724	SCREW-SELF TAP, 5 X 10MM
18	4	1-44009A	SCREW-BHCS, 1/4-20 X 7/8
19	1	1-47810	SCREW, SET, FLT PT M8 - 1.25 X 8MM
20	1	1-6668	COMPRESSION SPRING
21	2	1-7104	SCREW - PAN HS, M3 X 30
22	1	1-7558	POP RIVET-3/16"
23	2	1-9541	WASHER-FLAT, M3 DIN 125A
24	1	2-23201	TERMINAL LUG-6.3MM X .8MM POP RIVET
25	1	5-8426A2-01	STRAP-1/4 INCH BLACK VELCRO (LOOP)
26	3	8-7216	PLUG-HOLE, 16MM DIA
27	1	EAA0263G02A	SUPPORT, WHEELGUARD
28	1	EAA0263G07A	ASSY-BRAKE PEDAL
29	1	EAA0263G10A	TUBE, WHEELGUARD SUPPORT
30*	1	EAA0338G36A	VIBR. MOT. UL IF40/28.5
31	1	EAA0338G83B	ASSY - IBP DIGITAL BOX
32*	1	EAA0346J28A	ASSY - SAPE JB VPI 1D, S1
33*	1	EAA0346J29A	ASSY - DISPLAY JB VPI SYS I
34	1	EAC0053J00A	WEIGHT TRAY- SNAP-ON HANDSPIN
35	1	EAC0053J15A	BRAKE SPACER
36	1	EAC0053J16A	MICROSWITCH PLATE
37	2	EAC0060G03A	BUSHING, WHEELGUARD
38	1	EAM0003J18A	SPRING-EXTENTION WHEELGUARD
39	1	EAM0006G02A	WHEELGUARD TUBE RING
40	1	EAS2027G38A	PLATE- WHEELGUARD COVER
41	1	EAS2081J95A	CABINET - S1 RED SPRAYED
42	1	EAW0233J01A	HARNESS - DISPLAY PCB
43	1	EAW0233J08A	CABLE-SWITCH ASSY
44	1	7-16201A	TRANSFORMER- 500VA AUTOMATIC
45	1	EAW0233J07A	HARNESS-WIRING, TRANSFORMER

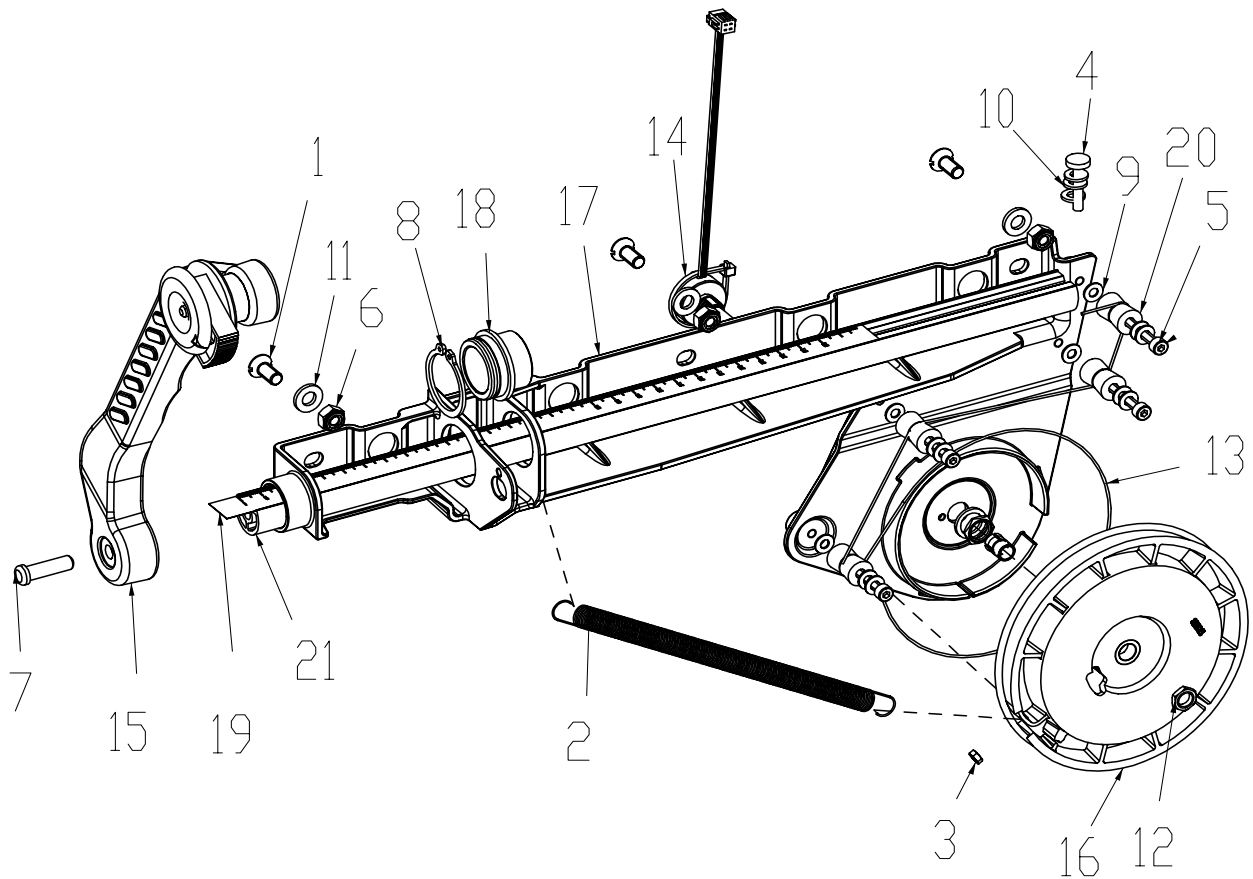
* ASSEMBLY BREAK DOWN LISTED

UPPER DISPLAY
EAA0346J29A



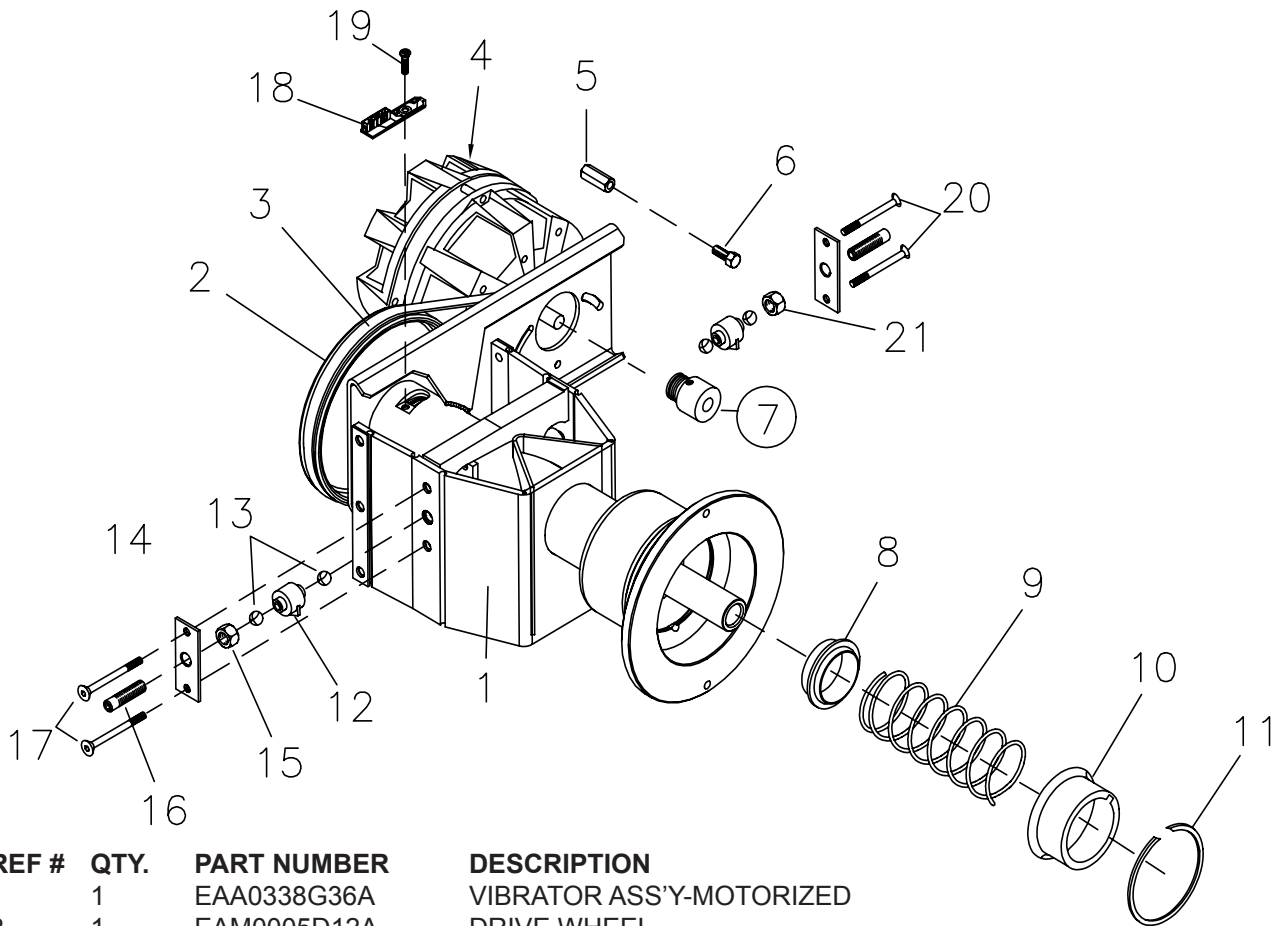
ITEM	QTY	PART NUMBER	DESCRIPTION
1	1	EAA0346J17A	DISPLAY- MEMBRANE SYSTEM I
2	5	1-15033	NUT-KEPS, M3 - .5
3	1	EAP0192P80A	PCB ASS'Y-DISPLAY, JB VPI SYS III
4	5	1-11062A	SPACER- 1/4" X 3/8"
5	1	5-8426A1	STRAP - 1/4 INCH BLACK VELCRO (HOOK)

1D SAPE ASSEMBLY
EAA0346J28A



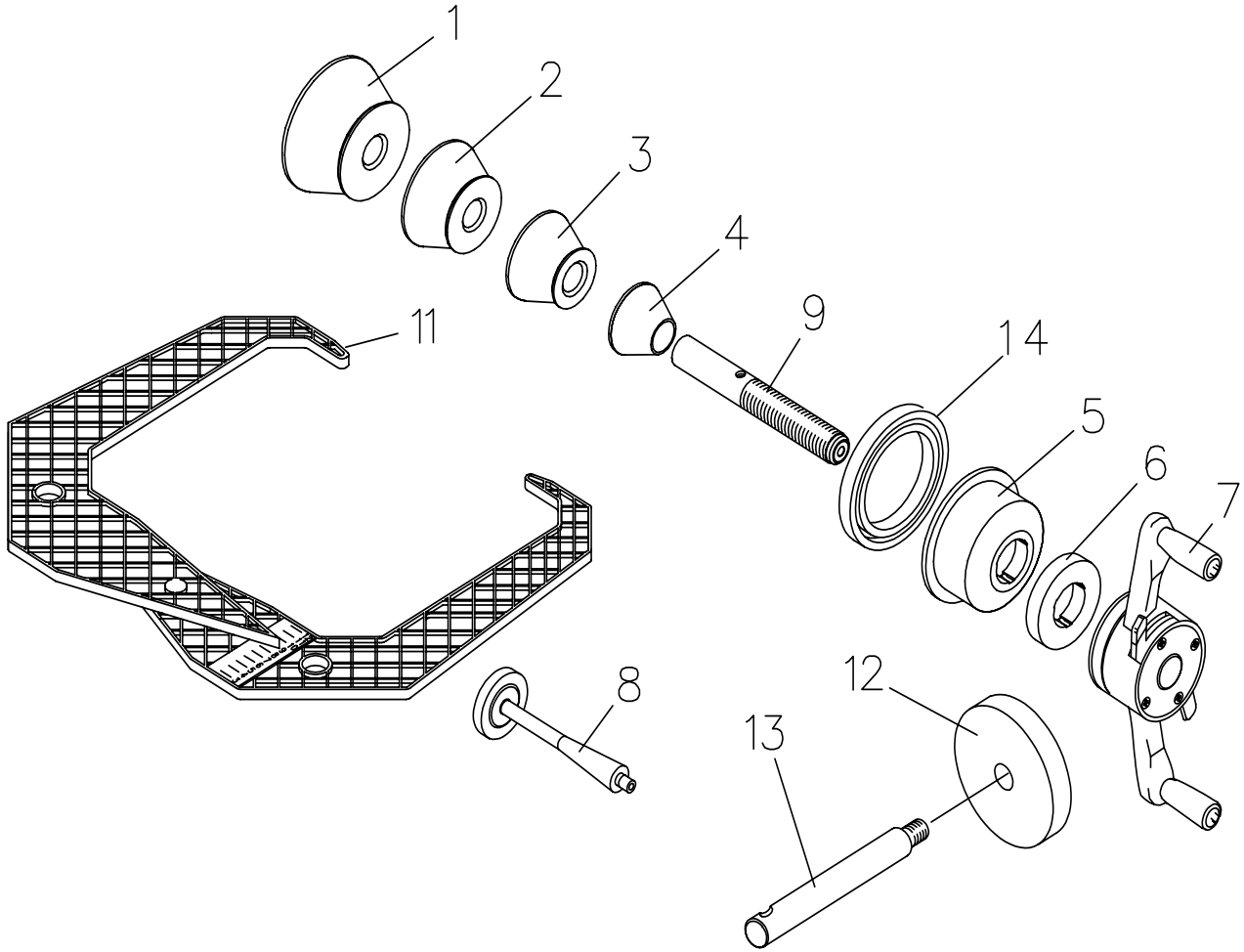
SYM	QTY	PART NO	DESCRIPTION
1	3	1-03405A	MSCR, OVAL HD M 6 X 14MM
2	1	1-06567A	STAND SAPE TENSION SPRING
3	1	1-11233	NUT - HEX, M3 DIN 934
4	1	1-13609	SCREW-HHCS,M4-16 X 8.8
5	4	1-13909	SCR - HEX SKT HD CAP (M4 X 30MM)DIN912
6	3	1-16633A	NUT,SELF LOCK. ALL-METAL M6 A2J
7	1	1-3824	SCREW-SELF TAP,6 X 12MM
8	1	1-4777	RETAINING RING FOR SHAFT UNI7435
9	12	1-9641	PLAIN WASHER D4MM
10	3	1-9741	WASHER-FLAT, M5 X 10.0OD X 1MM THK
11	3	1-9841	WASHER PLAIN, 6MM
12	1	2-07657A	CLAMPING DEVICE W/NUT
13	1	6-00504A	ROPE HEMINGWAY
14	1	EAA0266D20A	ROTATIVE TRANSDUCER 100HM
15	1	EAA0346J26A	ASSY - SAPE ARM W/ EJECTOR
16	1	EAC0058D06A	RIEMENHALTEROLLE MIT EINLEGETEIL
17	1	EAC0087G59A	STAND. S1 SAPE SUPPORT
18	1	EAC0087G70A	STANDARD. S1 SAPE BUSHING
19	1	EAL0349G31A	DISTANCE SCALE
20	4	EAM0005D35A	REEL-GUIDING,SAPE
21	1	EAM0053G16A	STANDARD. ROD SAPE, S1

VIBRATORY ASSEMBLY



REF #	QTY.	PART NUMBER	DESCRIPTION
1	1	EAA0338G36A	VIBRATOR ASS'Y-MOTORIZED
2	1	EAM0005D12A	DRIVE WHEEL
3	1	8-3531	MULTIRIB BELT 5 PJ 711 DIN 7867
4	1	EAA0266D29A	MOTOR, AC 120W 1 PH 220-240V - 50/60 HZ
5	2	EAM0005D09A	MOTOR DISTANCE BOLT
6	1	1-30701	SCREW HEX HD M 6 X 12
7	1	EAM0005D08A	MOTOR PULLEY
8	1	EAC0058D03A	SPRING CENTERING RING
9	1	1-6498	SPRING - COMPRESSION 5 X 63 X 120
10	1	EAS2025D14A	SPRING CASE DEEP DRAW
11	1	1-13077	SNAP RING
12	1	EAA0260D59A	TRANSDUCER
13	4	8-1144	BALL, STEEL
14	2	1-2967	PRETENSION SPRING
15	1	1-11833	NUT-HEX M 10 X 1 DIN 934
16	2	EAM0005D07A	SETSCREW - HEX SOCKET M 10 X 1
17	2	1-19903A	SCREW HEX SOCKET / COUNTERSUNK M 4 X 65
18	1	EAA0344G00A	ENCODER PCB
19	1	1-13004	SCREW PHILLIP PAN HD M 4 X 6
20	2	1-17403	SCREW HEX SOCKET / COUNTERSUNK M 4 X 25
21	1	1-4034	NUT - HEX M 10 X 1 DIN 439
*	1	EAW0239D00A	RIBBON CABLE VIBRATORY
**	1	EAA0260D56A	BRAKE LEVER A CPL.
**	1	EAA0260D57A	BRAKE LEVER B CPL.

CONES AND ACCESSORIES



ITEM	QTY	PART NUMBER	DESCRIPTION
1	1	EAM0003J08A	CONE, 89-132 MM (3.50 - 5.20 INCHES)
2	1	EAM0003J07A	CONE, 71 - 99 MM (3.23 - 3.90 INCHES)
3	1	EAM0003J06A	CONE, 56 - 84 MM (2.67 - 3.35 INCHES)
4	1	EAM0003J05A	CONE, 43 -63 MM (1.66 - 2.50 INCHES)
5	1	EAM0058D07A	CUP - PRESSURE
6	1	EAC0058D08A	DISK - PRESSURE
7	1	EAA0263G66A	QUICK NUT
8	1	EAM0005D40A	WEIGHT - CALIBRATION
9	1	EAM0021D90A	40 MM STUB SHAFT
11	1	EAA0247G21A	CALIPER - RIM WIDTH
12	4	EAC0060G02A	FLANGE - COVER, HOOK
13	4	EAM0006G01A	HOOK - STORAGE
14	1	EAC9958D15A	RUBBER PROTECTOR



John Bean Equipment
309 Exchange Ave.
Conway, AR 72032
501-450-1500

Notice: The information contained in this document is subject to change without notice. Snacon Equipment makes no warranty with regard to this material. Snacon Equipment shall not be liable for errors contained herein or for incidental consequential damages in connection with furnishings, performance, or use of this material.

This document contains proprietary information which is protected by copyright and patents. All rights are reserved. No part of this document may be photocopied, reproduced, or translated without prior written consent