

JohnBean™

**9800
Heavy-Duty Wheel Balancer
EEWB543A**

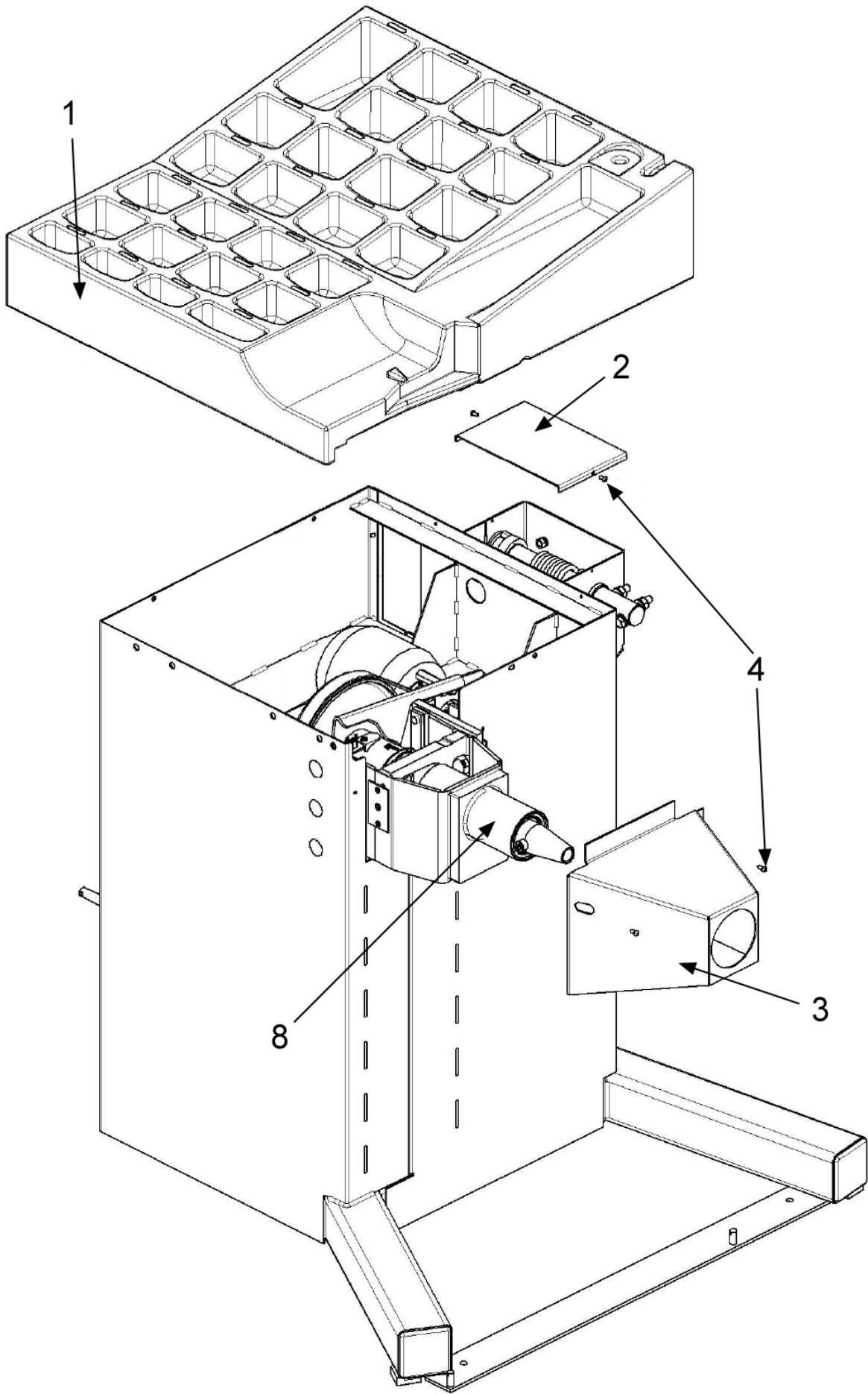


Note: Picture Shown is with Optional Wheel Lift

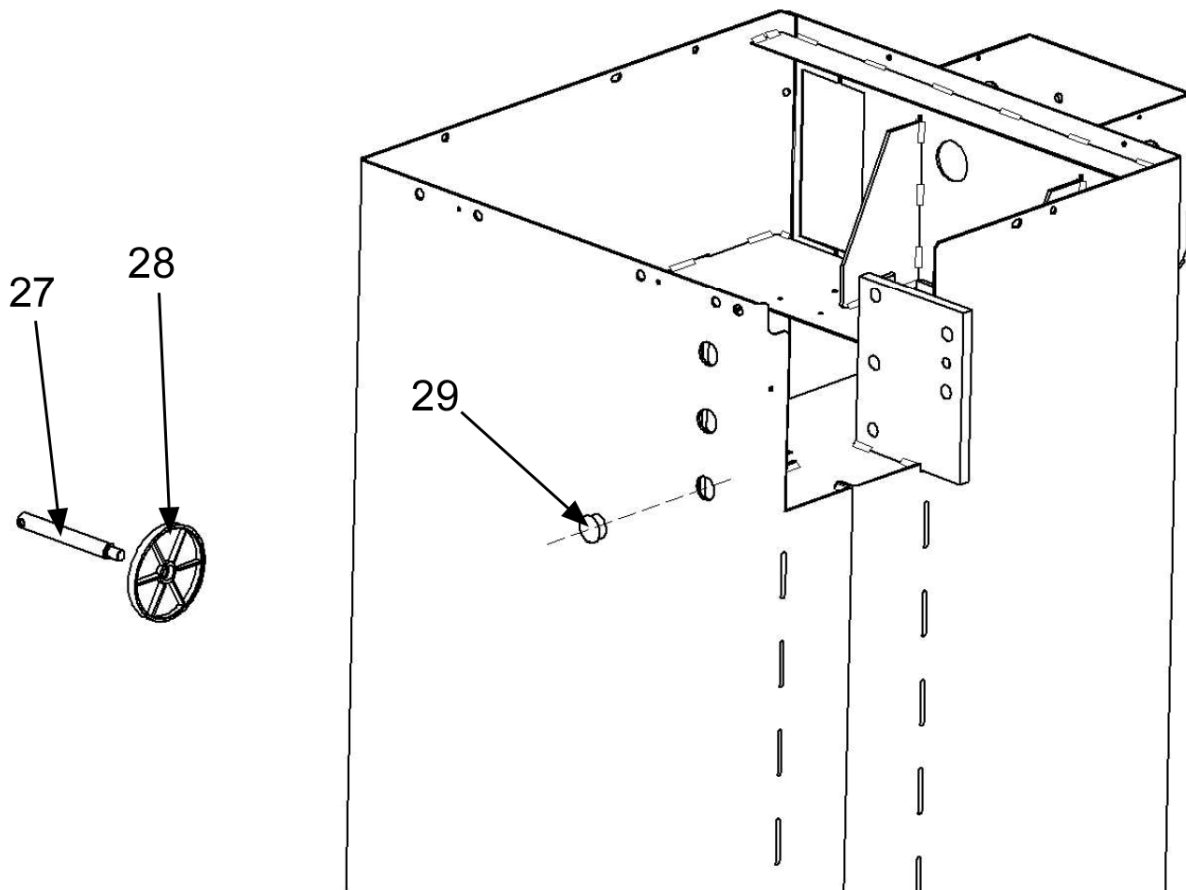
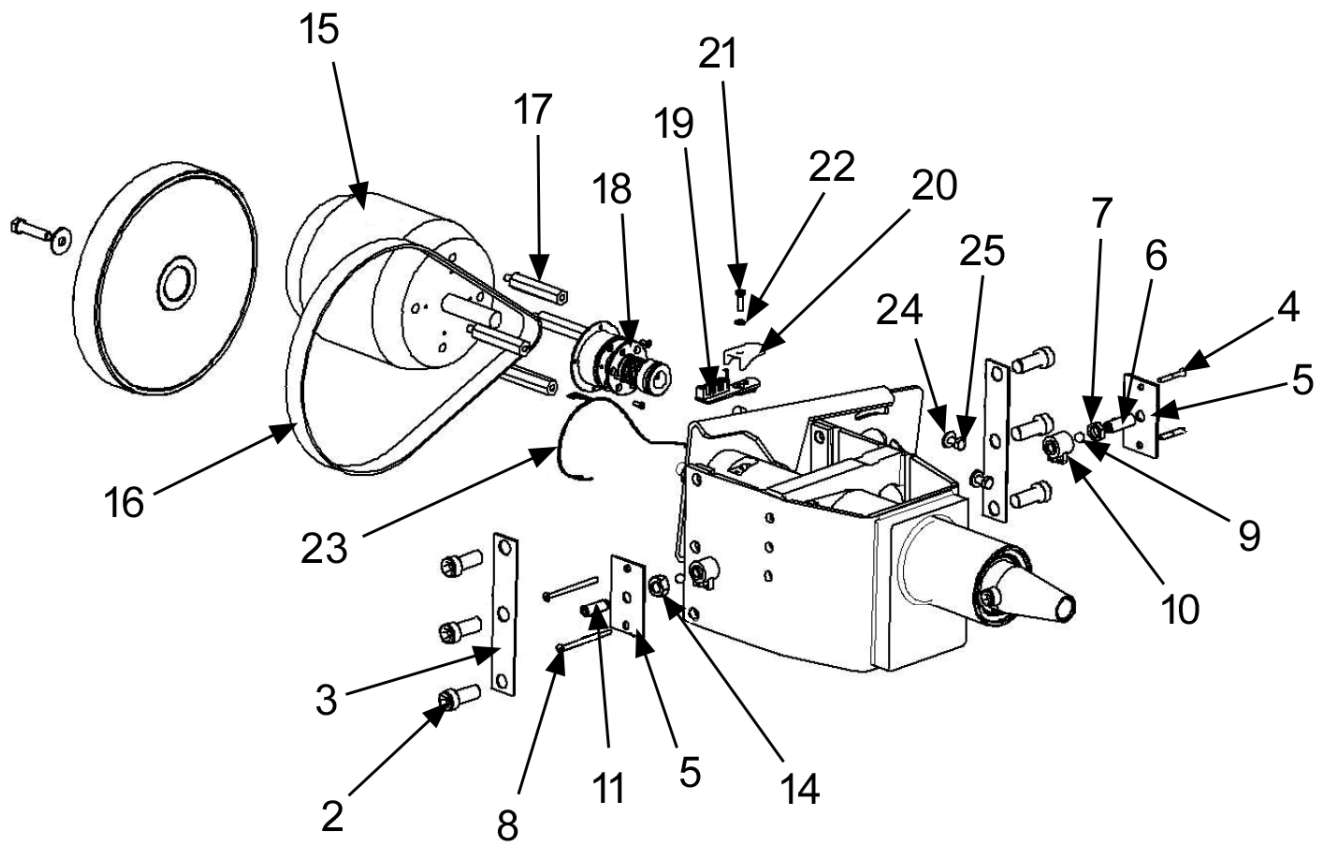
PARTS MANUAL

BOM EEWB543A

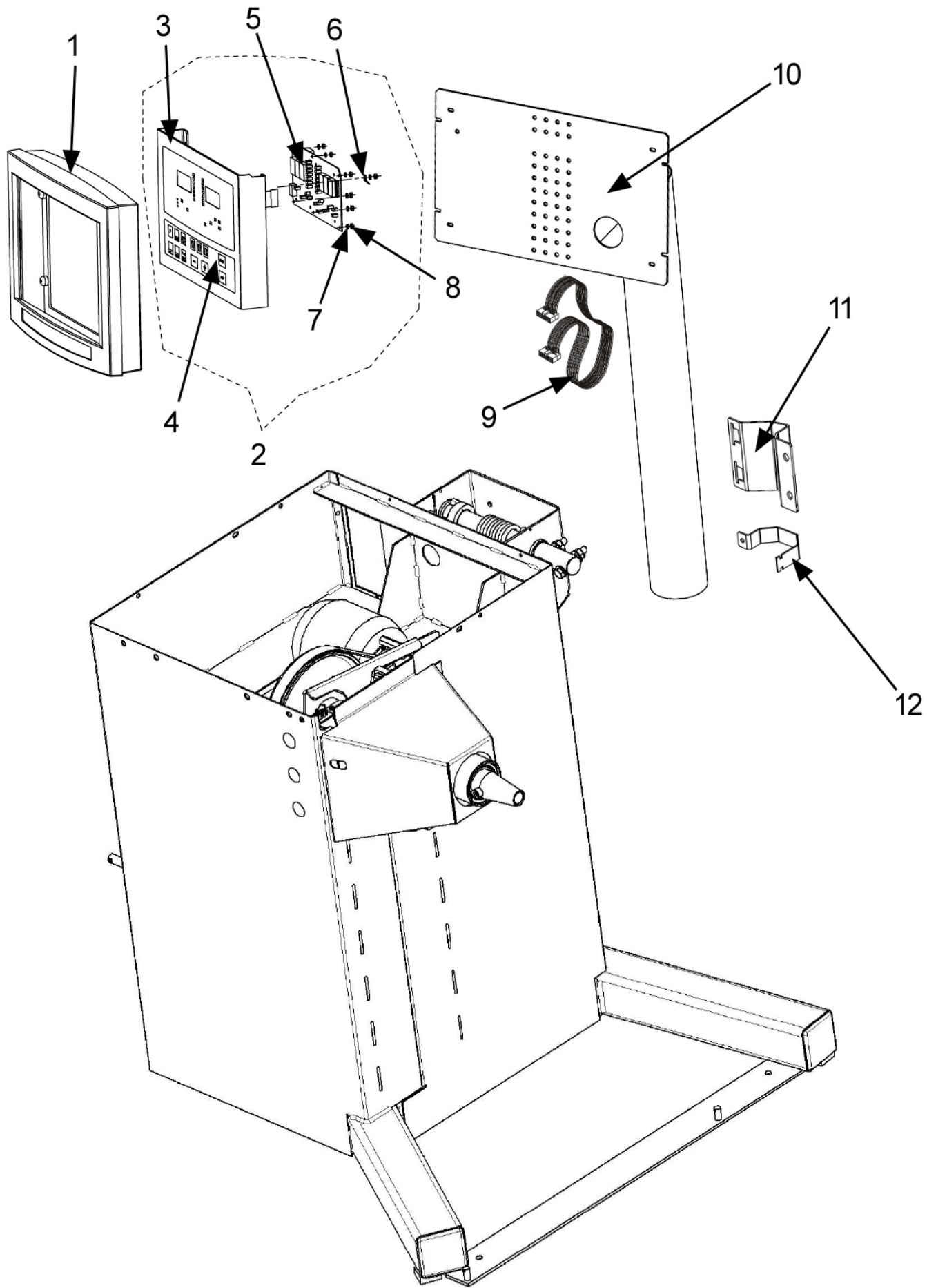
| Part Number | Quantity | Description |
|-------------|----------|----------------------------------|
| EAA0346J72A | 1 | Balancer Assy-Truck 9800 |
| ZEEWB710B9 | 1 | Lit Pack Geo 980L |
| EAX0039J01A | 1 | Cord-Power, 230V |
| 8-00391A | 1 | Rim Width Caliper, Truck Bal |
| 00058839000 | 1 | Tool-Pdq Weight Pass Car |
| EAC0060G02A | 4 | Flange Wshr Cone Storage |
| EAM0006G01A | 4 | Pin Cone Storage |
| EAA0537G51A | 1 | Adapter Truck Wheel Cone |
| EAA0307G80A | 1 | Kit-Clamp Truck Prof |
| EAM0050J23A | 1 | Cone 107 - 174 mm / 4.25 - 6.85" |
| EAM0050J24A | 1 | Cone Truck 200 - 230 mm / 8 - 9" |
| EAM0005D23A | 1 | Cone 42 - 77 mm / 1.70 - 3.15" |
| EAM0005D24A | 1 | Cone 71 - 99 mm / 2.8 - 3.9" |
| EAM0005D25A | 1 | Cone 96 - 114 mm / 3.8 - 4" |
| EAM0003J69A | 1 | Cone 87 - 133 mm / 3.42 - 5.25" |
| EAC0058D68A | 1 | Spacer |
| 190-818-004 | 1 | Spacer Ring For Hd Wb |
| 8-02040A2 | 1 | Pressure Cup |
| 00110410000 | 1 | Protector Rubber |
| EAM0005D40A | 1 | Calibration Weight |
| EAL0341J63A | 1 | Label-Patent |
| EAL0349G59A | 1 | Label-Wheel |
| EAL0343J76B | 1 | Serial Label Document |
| EAL0341J96A | 1 | Label-Balancer Warning Rear |
| EAL0341J97A | 1 | Label-Balancer Warning Side |
| EAL0341J63A | 1 | Decal—John Bean Tm Chrome |



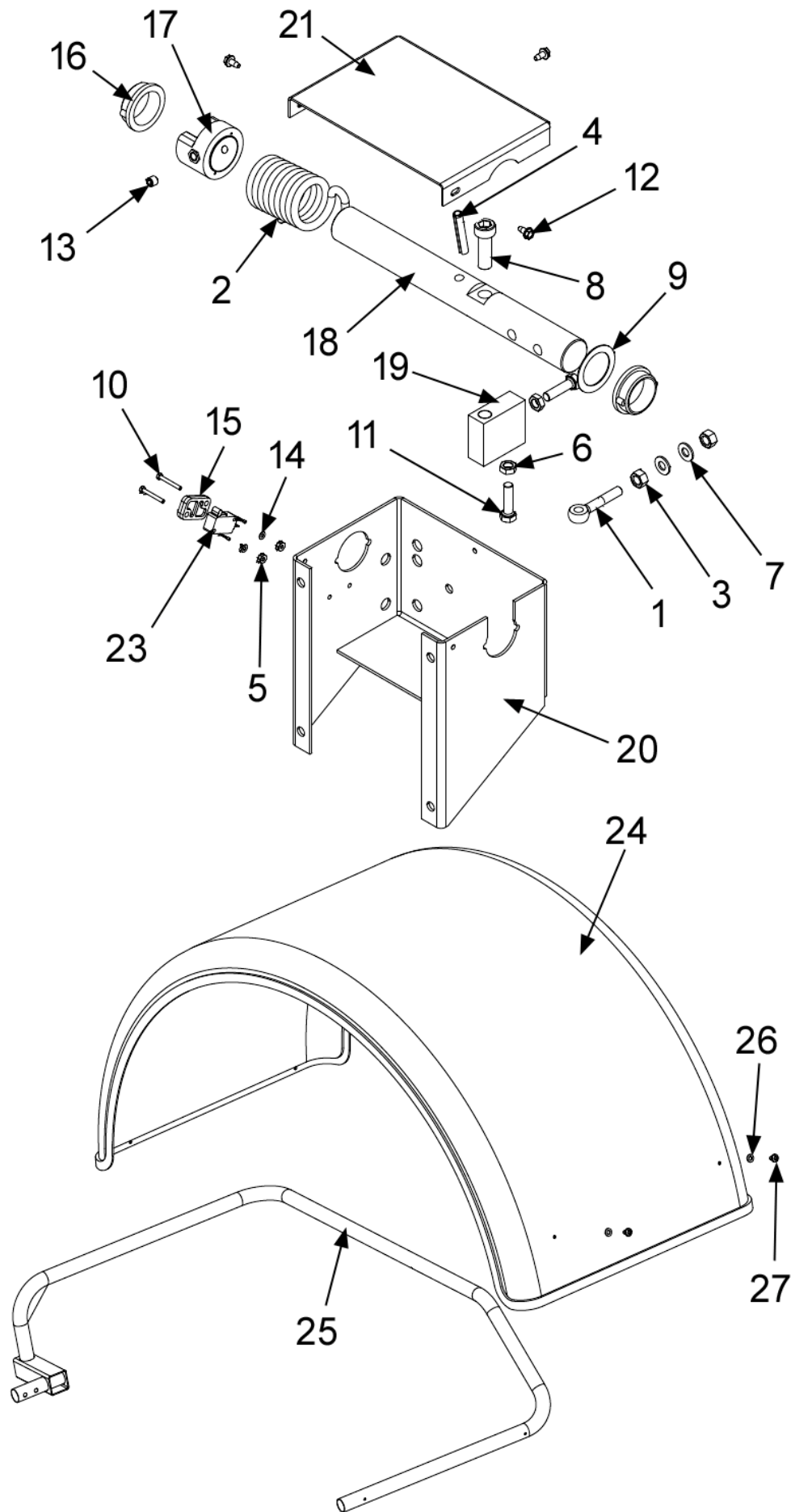
| | | | | |
|---|---|-------------|-----------------------|-------------|
| 1 | 1 | EAC0058D42A | Weight Tray | |
| 2 | 1 | EAS2103J54A | Back Support Cover | EAS2106G73A |
| 3 | 1 | EAS2058D59A | Casing Cover Truck | |
| 4 | 2 | 1-3724 | Self Tapping Screw | 1-18523A1 |
| 8 | 1 | EAA0307G10A | Vibratory System Assy | |



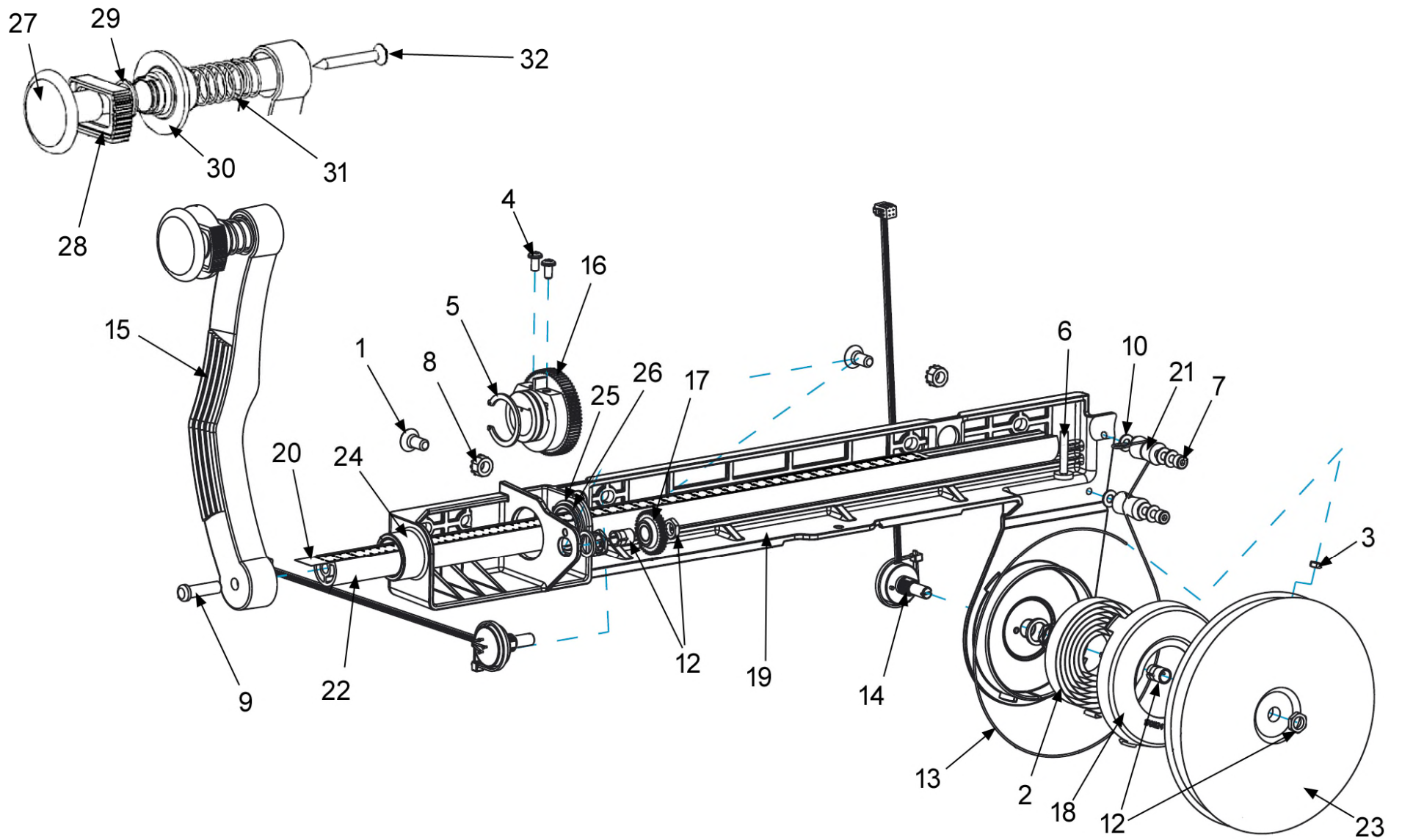
| Ref | Qty | Part Number | Description | |
|-----|-----|-------------|--------------------------|----------|
| 2 | 6 | 1-20309 | Screw, Sock.H.C M12X30 | |
| 3 | 2 | EAS2067G64A | Distance Plate Truck | |
| 4 | 2 | 1-17503 | Screw, Socket Flat Head | |
| 5 | 2 | EAS2067G63A | Pretension Spring | |
| 6 | 1 | EAM0033D03A | Set Screw | |
| 7 | 1 | 1-04634A | Nut Hex Low | |
| 8 | 2 | 1-19903A | Screw Hex Socket Count.H | |
| 9 | 4 | 8-1144 | Steel Ball | |
| 10 | 2 | EAA0260D59A | Transducer | |
| 11 | 1 | EAM0005D07A | Setscrew Hex Socket | |
| 14 | 1 | 1-11833 | Hexagon Nut | |
| 15 | 1 | 2-59466A | Motor - 230V 250W 6P | |
| 16 | 1 | 8-04231A | Drive Belt Multi-Rib | |
| 17 | 4 | EAM0005D44A | Motor Distance Bolt | |
| 18 | 1 | EAA0313D67A | E-Brake W/Pulley Assy | |
| 19 | 1 | EAA0344G00A | Opto-Electronic Unit | |
| 20 | 1 | EAC0087G54A | Encoder Board Protection | |
| 21 | 1 | 1-13404A | Screw - Phms | |
| 22 | 1 | 1-9641 | Washer | |
| 23 | 1 | EAW0240G67A | Cable - No Temp. Sensor | |
| 24 | 4 | 1-16641A | Washer Plain | |
| 25 | 4 | 1-30701 | Screw Hex. Head | |
| 27 | 4 | EAM0006G01A | Flange Holder Pin | |
| 28 | 4 | EAC0060G02A | Flanges Protection | |
| 29 | 3 | 8-7216 | Hole Plug | 1-07676A |



| Ref | Qty | Part Number | Description | |
|--|-----|-------------|---|-------------|
| 1 | 1 | EAC0060G11A | Console, Display,Black | |
| 2 | 1 | EAA0255J92A | Front Panel Assy | |
| 3 | 1 | EAA0255J93A | Display Panel | |
| 4 | 1 | EAA0255J94A | Switch - Membrane | |
| 5 | 1 | EAP0323G00A | Display PCB Requires Ver 3.5.2 or higher | EAP0290G70A |
| When changing from G70 to G00 the machine will need to be re-programmed even if its at the current version | | | | |
| 6 | 1 | 2-23201 | Terminal - Lug, Pop Rivet | |
| 7 | 1 | 1-5547 | Washer | |
| 8 | 1 | 1-15833A | Nut M4, Brass | |
| 9 | 1 | EAW0239D36A | Wiring Harness for Display | |
| 10 | 1 | EAA0346J83A | Column Display Support | EAS2098G06A |
| 11 | 1 | EAS2103J58A | Plate - Tower Bracket | EAS2097G87A |
| 12 | 2 | EAS2113J54A | Clamp - Auto Balancer Tower | |



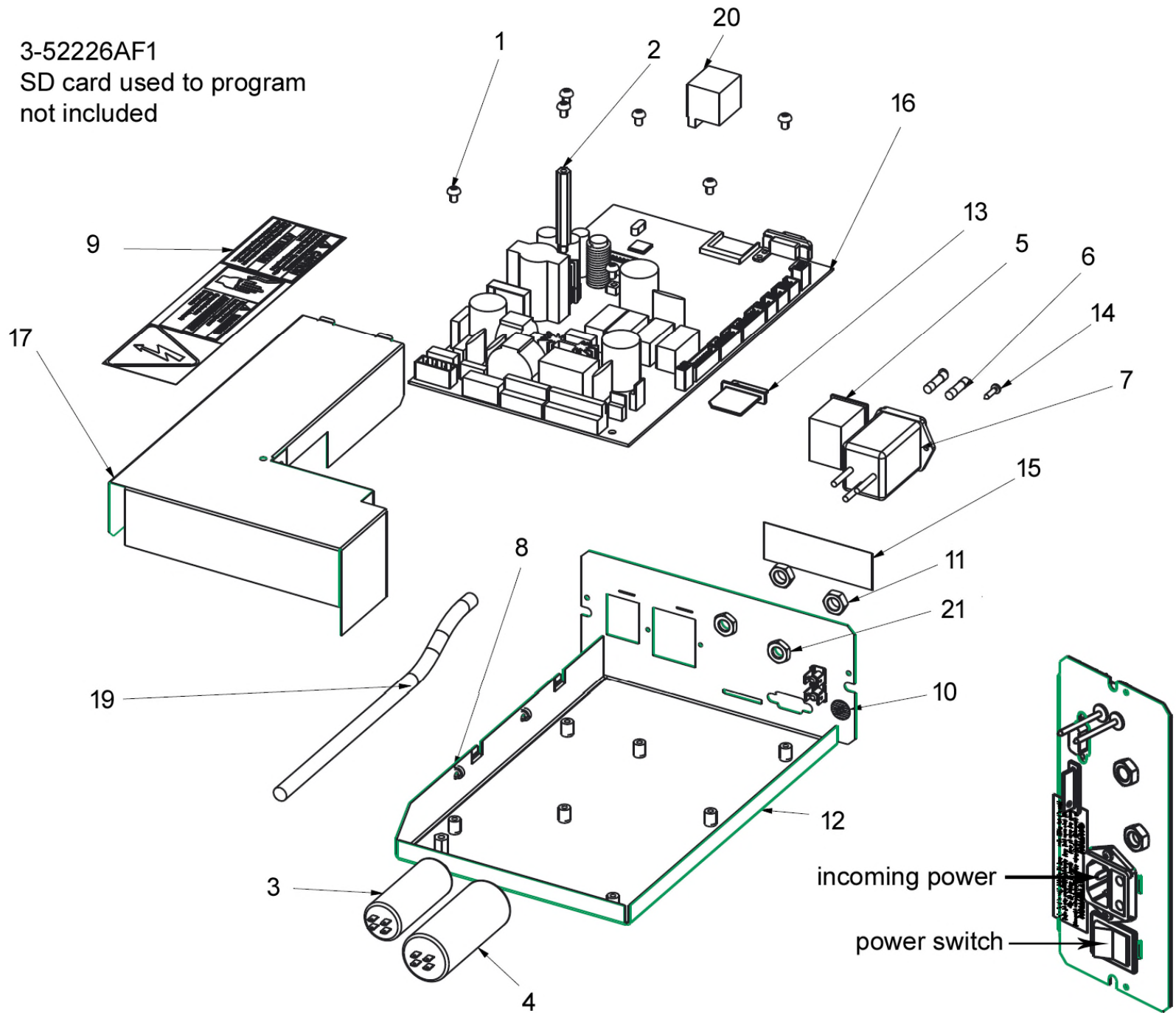
| Ref | Qty | Part Number | Description |
|-----|-----|-------------|---------------------------------------|
| A | 1 | EAA0346J43A | Backpack Assembly |
| 1 | 1 | 1-01530 | Eyebolt-M8 X 50 |
| 2 | 1 | 1-04267A | Spring-Torsion |
| 3 | 2 | 1-11833 | Nut - M8 - X 1.25 Din 934 |
| 4 | 1 | 1-12452 | Pins - Straight Slotted 8X45 Din 1481 |
| 5 | 2 | 1-15033 | Nut-Keps, M3 - .5 |
| 6 | 2 | 1-15933A | Nut - Hex, M8 X 1.25 Din 936, Uni5589 |
| 7 | 2 | 1-17741 | Washer, 8Mm Din125A |
| 8 | 1 | 1-20409 | Screw Tcei M12X35 12.9 Br |
| 9 | 1 | 1-22441A | Shim Ring 32X45X1 |
| 10 | 2 | 1-27001 | Screw,Hex Head Mac. M3X25 8.8 |
| 11 | 2 | 1-32801A | Screw - Hhcs, M8 X 30Mm Zinc |
| 12 | 3 | 1-3724 | Screw-Self Tap,5 X 10Mm |
| 13 | 1 | 1-49010A | Screw, Socket With Cup Point M8X8 |
| 14 | 2 | 1-9541 | Washer-Flat,M3 Din 125A |
| 15 | 1 | EAC0053J16A | Microswitch Plate |
| 16 | 2 | EAC0058D36A | Wheelguard Bushing D.32 |
| 17 | 1 | EAC0058D38A | Schaltring Switch Segment |
| 18 | 1 | EAM0050J19A | Shaft - Wheelguard Truck |
| 19 | 1 | EAM0050J21A | Block - Wheelguard Stop |
| 20 | 1 | EAS2103J53A | Backpack - M2 Cabinet |
| 21 | 1 | EAS2103J54A | Cover - M2 Backpack |
| 23 | 1 | EAW0233J08A | Cable-Switch Assy |
| 24 | 1 | EAM0021D92A | Wheelguard |
| 25 | 1 | EAA0346J44A | Wheelguard Tube |
| 26 | 2 | 1-11841 | Washer Plain M10.5 |
| 27 | 2 | 1-19923 | Screw M6.3 x 19 |



| Ref | Qty | Part Number | Description |
|-----|-----|-------------|---------------------------------|
| NS | 1 | EAA0346J86A | Complete Sape Assembly |
| 1 | 2 | 1-27903A | Screw - M6 X 14mm Fhms, Skt |
| 2 | 1 | 1-03967A | Spring-Sape Auto Stop System |
| 3 | 1 | 1-11233 | Nut - Hex, M3 Din 934 |
| 4 | 2 | 1-11726A | Screw, Self Tapping For Plastic |
| 5 | 1 | 1-13377A | Circlip-27mm X 1.20mm Din 471 |
| 6 | 1 | 1-13609 | Screw-Hhcs,M4-16 X 8.8 |
| 7 | 2 | 1-13909 | Scr - Hex Skt Hd Cap M4 X 30mm |
| 8 | 2 | 1-25433A | Nut-M6 Keps, Serrated Lw Zinc |
| 9 | 1 | 1-3824 | Screw-Self Tap,6 X 12mm |
| 10 | 6 | 1-9641 | Plain Washer D4mm |
| 12 | 2 | 2-07657A | Clamping Device W/Nut |
| 13 | 1 | 6-00604A | Rope |
| 14 | 2 | EAA0266D20A | Rotative Transducer 100 ohm |
| 15 | 1 | EAA0317D03A | Sape Arm Europe W/ Ejector |
| 16 | 1 | EAC0058D12A | Cog Wheel - 56 Tooth |
| 17 | 1 | EAC0058D13A | Cog Wheel 28 Teeth |
| 18 | 1 | EAC0058D58A | Safety Cover |
| 19 | 1 | EAM0125G60A | Sape Support |

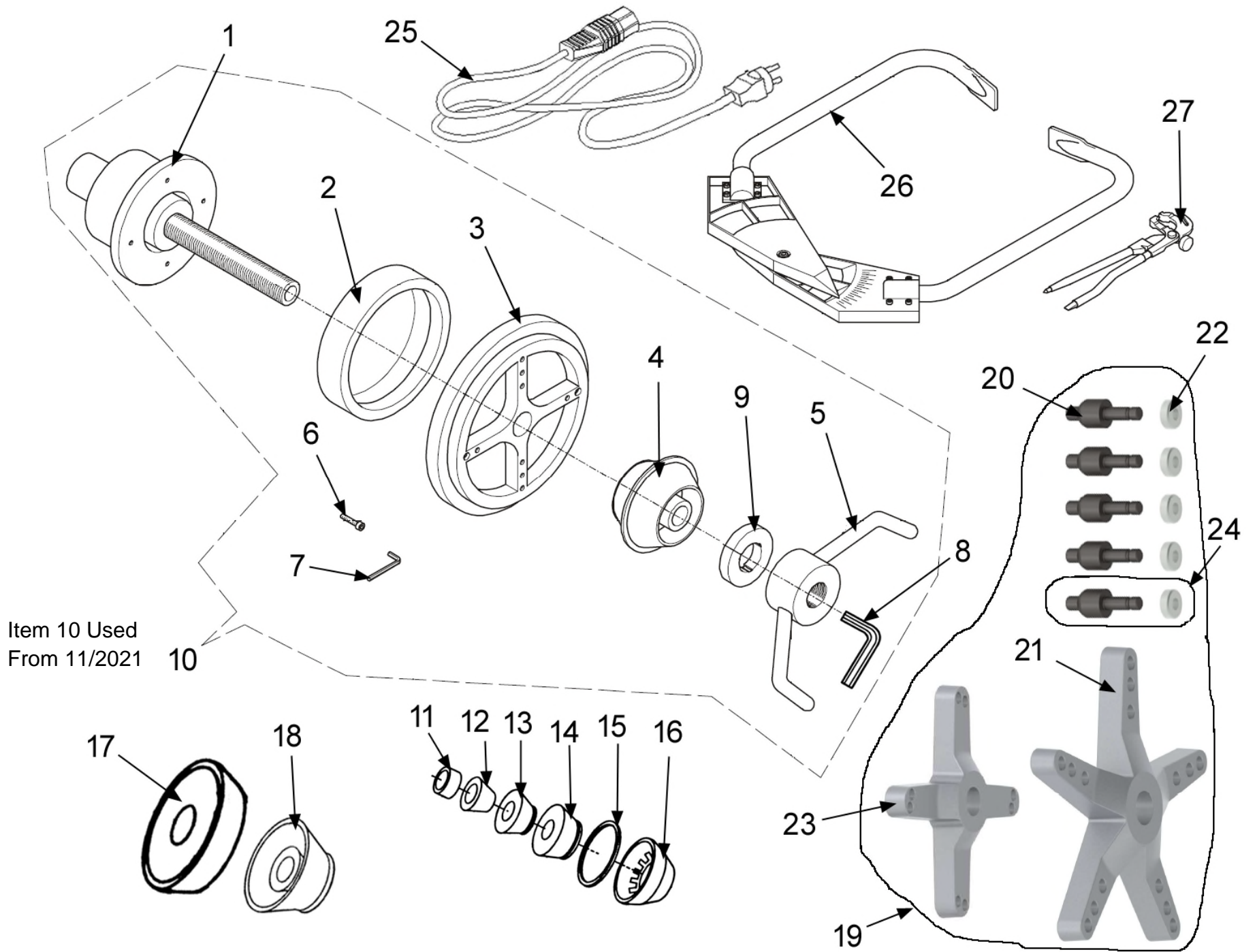
| Ref | Qty | Part Number | Description |
|-----|-----|-------------|---------------------------|
| 20 | 1 | EAL0349G31A | Distance Scale |
| 21 | 2 | EAM0005D35A | Reel-Guiding,Sape |
| 22 | 1 | EAM0053G08A | Standard. Rod Sape, Truck |
| 23 | 1 | EAM0053G30A | Standard. Rope Reel Truck |
| 24 | 1 | 1-13865A | Bushing Igus |
| 25 | 1 | 1-4577 | Ring-Snap,25 X 1.20 |
| 26 | 1 | EAM0068G76A | S2-2D Sape Bushing |
| 27 | 1 | EAM0033D46A | Disk Touching Truck |
| 28 | 1 | EAM0033D44A | Ejector Truck |
| 29 | 1 | 1-3977 | Retaining Ring |
| 30 | 1 | EAM0033D45A | Arm - Adjuster Truck Sape |
| 31 | 1 | 1-08668A | Spring Compression |
| 32 | 1 | 1-3624 | Screw 5 x 40 mm |

3-52226AF1
SD card used to program
not included



| Ref | Qty | Part Number | Description |
|-----|-----|-------------|-----------------------------------|
| | 1 | EAA0338G83B | Complete Electronic Box |
| 1 | 7 | 1-13606A | Screw-Phms,M4 X 6mm W/ Lockwasher |
| 2 | 1 | 1-14461A | Spacer M4X50 |
| 3 | 1 | 2-01429A | Capacitor - 10Uf, 400V |
| 4 | 1 | 2-01529A | Capacitor - 20Uf, 400V |
| 5 | 1 | 2-13258A | Main Switch |
| 6 | 2 | 2-21251A | Fuse-Time Delay, 250V, 6.3 Amp |
| 7 | 1 | 2-64948A | Entry Power Module |
| 8 | 3 | 5-845 | Cable Tie Plastic |
| 9 | 1 | EAL0341J98A | Label-Balancer Warnings, Ebox |
| 10 | 1 | 8-23762A | Label - Earth Symbol |
| 11 | 2 | 1-15933A | Nut - Hex, M8 X 1.25 Din 936 |
| 12 | 1 | EAA0346J15A | Frame Assy - IBP Bal Box |
| 13 | 1 | EAC0087G52A | Memory Card |
| 14 | 2 | 1-23223A | Screw-Phms,M2.9 X 1 X 13mm |
| 15 | 1 | EAL0349G44A | Fuses Caution |

| Ref | Qty | Part Number | Description |
|-----|-----|-------------|---------------------------|
| 16 | 1 | EAP0276G40A | Motorized Integrated |
| 17 | 1 | EAS2092G08A | 12 Cover For New Dig. Box |
| 18 | 1 | EAW0239D07A | Cable - Grounding |
| 19 | 1 | EAW0240G79A | Main Cord |
| 20 | 1 | 2-17947A | Socket-Multipole. Wago |
| 21 | 2 | 1-23333A | M8 Jam Nut |



| Ref | Qty | Part Number | Description |
|-----|-----|-------------|----------------------------------|
| 1 | 1 | EAA0260D31A | Basic Plate shaft 240 mm long |
| 2 | 1 | 1-54684A | Spacer |
| 3 | 1 | EAA0260D32A | Gold Spacer |
| 4 | 1 | EAA0260D36A | Cone 122 - 174 mm |
| 5 | 1 | EAA0260D34A | Wing Nut |
| 6 | 2 | 1-16509A1 | Screw |
| 7 | 1 | 8-03550A | Wrench |
| 8 | 1 | 8-01350A | Wrench 14 mm |
| 9 | 1 | 8-02040A1 | Spacer, Ring nut |
| 10 | 1 | EAA0537G51A | Truck Wheel Adapter kit |
| 11 | 1 | EAM0058D68A | Spacer |
| 12 | 1 | EAM0005D23A | Cone 42 – 77 mm 1.70 – 3.15” |
| 13 | 1 | EAM0005D24A | Cone 72 – 99 mm 2.8 – 3.9” |
| 14 | 1 | EAM0005D25A | Cone 96 – 116 mm 3.8 – 4.57” |
| 15 | 1 | 110410000 | Pressure Cup Cushion |
| 16 | 1 | 8-02040A2 | Pressure Cup |
| 17 | 1 | EAM0050J24A | 2-sided Cone 8 – 9”, 220 mm step |
| 18 | 1 | EAM0050J23A | Light Truck Cone 4.15 – 6.94” |
| 19 | 1 | EAA0307G80A | 4 & 5-Star Centering Arms Kit |
| 20 | 5 | 1921080 | Truck Stud Rounded end |

| Ref | Qty | Part Number | Description |
|-----|-----|-------------|-----------------------------------|
| 21 | 1 | 1921004 | 5 Star Adapter w/o studs and nuts |
| 22 | 5 | 1921081 | Nut for Stud |
| 23 | 1 | 1921005 | 4 Star Adapter w/o studs and nuts |
| 24 | | 1921003 | Stud & Nut Rounded end |
| * | | 112105000 | Stud & Nut Flat end * Optional |
| 25 | 1 | EAX0039J01A | Cord-Power, 230V |
| 26 | 1 | 8-00391A | Rim Width Calipers, Truck |
| 27 | 1 | 00058839000 | Weight Pliers |



Notice: The information contained in this document is subject to change without notice. Snap-on Equipment makes no warranty with regard to this material. Snap-on Equipment shall not be liable for errors contained herein or for incidental consequential damages in connection with furnishings, performance, or use of this material.

This document contains proprietary information which is protected by copyright and patents. All rights are reserved. No part of this document may be photocopied, reproduced, or translated without prior written consent

John Bean Equipment
309 Exchange Ave
Conway, AR 72032
501-450-1500