

**JohnBean™**

**EEWB562AL B400L  
AUTOMATIC  
WHEEL BALANCER**



**PARTS MANUAL**

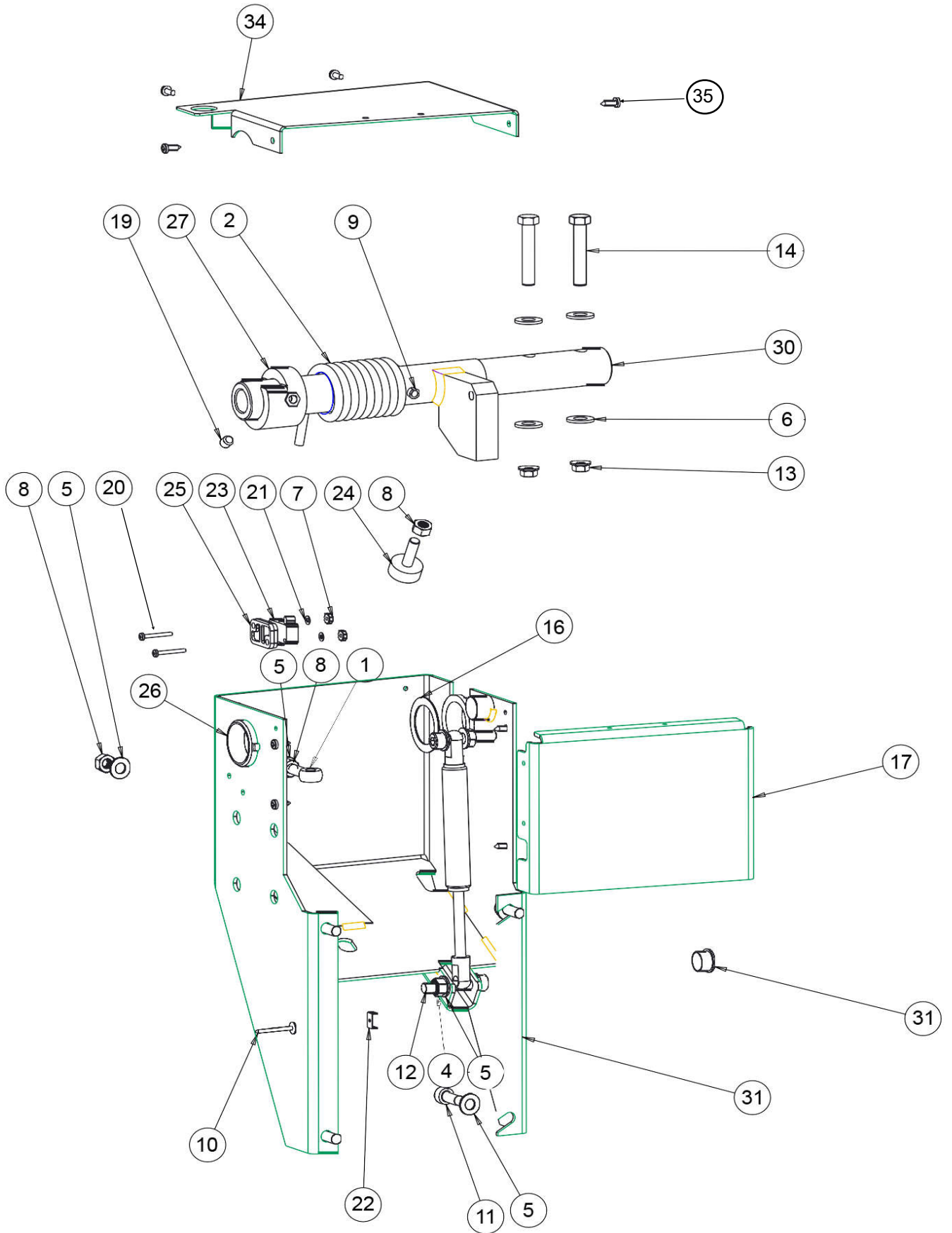
## EEWB562AL BOM

PART NUMBER	DESCRIPTION
EAK0309J26A	MONITOR KIT-VIDEO BAL
EAA0369J66A	HOOD ASSY-WITH SONAR
EAL0343J76B	SERIAL LABEL DOCUMENT
EAW0290J26A	POWER CABLE-5 METERS
89209000	CORD-POWER ADAPTER 12
EAC0060G02A	FLANGE WSHR CONE STORAGE
EAM0006G01A	PIN CONE STORAGE
58839000	TOOL-PDQ WEIGHT PASS CAR
EAA0263G79A	QUICK NUT KIT
EAM0005D40A	CALIBRATION WEIGHT
EAK0309J28A	KIT - 4 CONE
EAC0058D68A	SPACER, 29660
EAL0420J43A	MODEL DECAL B400L
EAL0341J63A	LABEL-PATENT
EAL0341J56A	LABEL-LASER
EAL0420J33A	LABEL-CAUTION MAX WHEEL DIA
EAC0105J41A	NAMEPLATE-JOHN BEAN TM
EAL0341J70A	LABEL-LASER APERTURE
EAL0341J71A	LABEL-CFR CERTIFICATION
EAL0392J89A	LABEL-CUST SVC JBC
EAL0341J96A	LABEL-BALANCER WARNING REAR
EAL0341J97A	LABEL-BALANCER WARNING SIDE

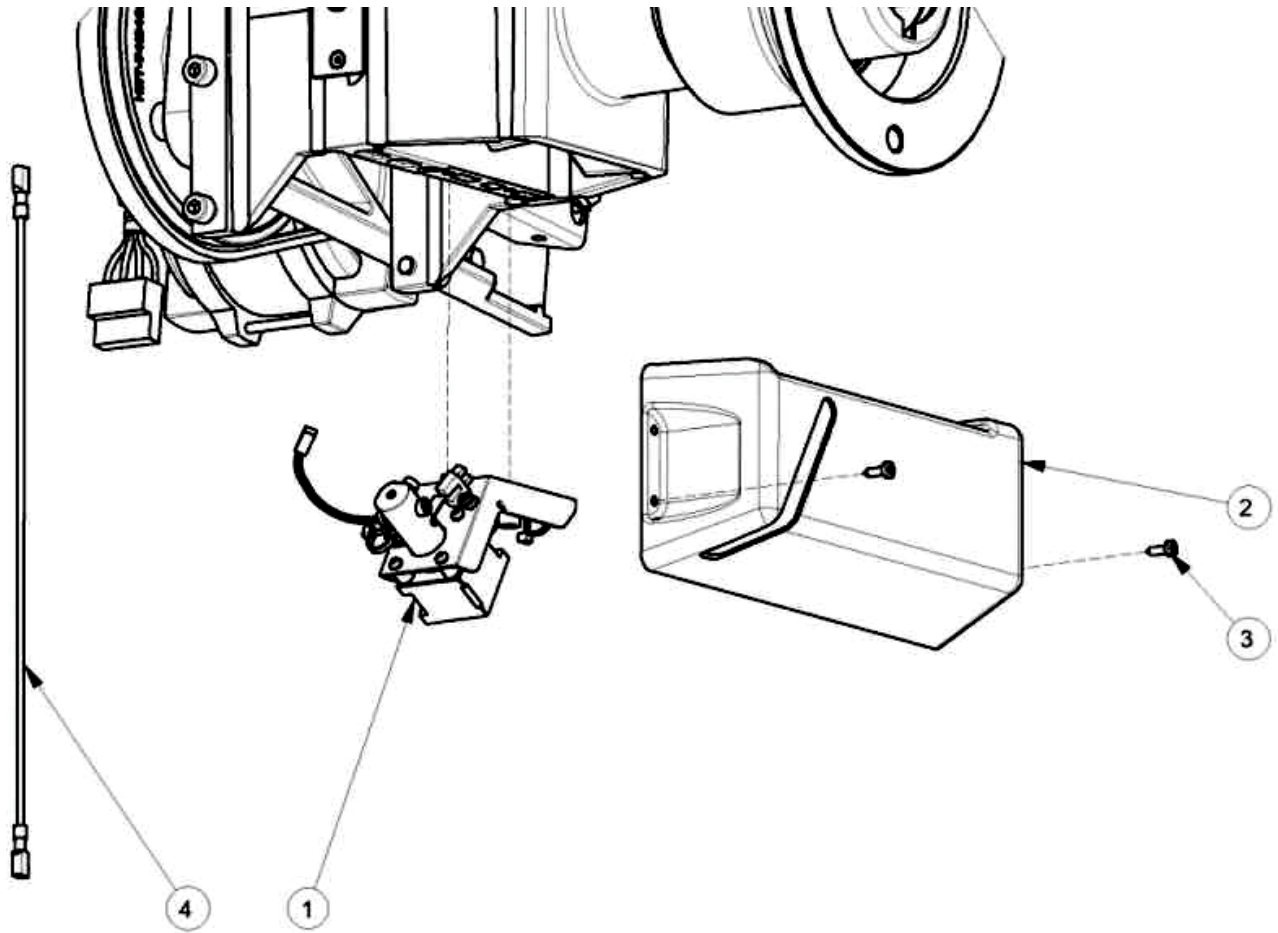


REF	QTY	PART NUMBER	DESCRIPTION
1	4	1-03725A	SCREW-PH SELF TAP M6.3X32 PHIL
2	2	1-11633A	NUT-M6 X 5,2MMTHK, BLK
4	1	1-1548	WASHER-EXT, SHAKEPROOF 6MM
5	4	1-16309	SCREW - SHCS, M6 X 16MM,
6	4	1-17659A	THREADED INSERT M10X22
7	3	1-18359A	NUTSERT, M8
8	2	1-22623A	SCR, SHT MET PHIL PHN 3.8MM X 13MM
9	6	1-3724	SCREW-SELF TAP, 5 X 10MM
10	1	1-6668	COMPRESSION SPRING
11	1	1-7558	POP RIVET-3/16"
12	1	2-23201	TERM. LUG-6.3MM X .8MM POP RIVET
13	1	EAW0283G02A	SLOTTED SWITCH EXTENSION CABLE
14	4	8-7216	PLUG-HOLE, 16MM DIA
15	1	EAA0263G07A	ASSY-BRAKE PEDAL
16	1	EAA0471G18A	STAND. M1 SAPE 1D-2D ASSY
17	1	EAA0364G85A	ALU VS MOT. INT.FL. D. 28.5/40
18	1	EAA0423J45A	CABINET ASSY - M2, RED
19	1	EAA0481G50AC	INTEGRATED L.E. VIDEO BOX PROG.
20	1	EAA0369J65A	WHEEL GUARD SUPPORT
21	1	EAC0053J15A	BRAKE SPACER
22	1	EAS2128J52A	ASSY MONITOR
23	1	EAC0103G31A	VIBRATORY SYSTEM COVER
24	1	EAC0103G55A	CHROME PLATED
25	1	EAL0424G96A	NO BRAND FLAT
26	1	EAA0394G93A	WEIGHT LASER
27	1	EAM0091G86A	WEIGHT TRAY JOHN BEAN
29	2	EAW0239D07A	GROUND WIRE
33	1	EAW0233J07A	HARNESS-WIRING, TRANSFORMER

REF	QTY	PART NUMBER	DESCRIPTION
34	1	7-16201A	TRANSFORMER- 500VA AUTO
37	2	8-23762A	LABEL - EARTH SYMBOL
38	1	EAS2128J53A	MONITOR VESA MOUNT
39	2	1-39901A	SCREW - HHMS 8M X 50MM
40	2	1-10033	HEX NUT PREVAILING
41	2	1-07439A	NUT - SPEED, "U" TYPE,
42	6	EAC0060G00A	VIBRATORY SYSTEM HOLES CUP
43	1	EAW0283G76A	SONAR SENSOR CABLE
44	1	EAS2128J67A	SHIELD - FIRE
45	2	1-2509	SCREW-BHCS, 1/4 - 20 X 5/8
46	2	1-02443A	WASHER, LOCK-M6 1-02443A
53	4	1-10041	WASHER D.8 UNI6592-69/DIN125
54	4	1-17709	SCREW - SHCS M8 X 20MM
55	3	1-18359A	THREADED INSERT M8x1,25
58	2	1-10576A	PLUG HOLE 51 MM
59	1	2-17947A	SOCKET-MULTIPOLE, WAGO
60	4	EAS2116G12A	SPACER - VIB 0.2MM
61	1	1-27259A	M8 x 1.25 NUTSERT LONG GRIP
62	5	5-06345A	PANEL FIXING TIES 4.8X130MM
63	7	5-09145A	PUSH RIVET , NATURAL NYLON
64	3	5-09245A	TIE HOLDER SCREW MOUNT
65	3	5-09345A	STRAIN RELIEF - FLAT CABLE
66	8	5-845	TIE - CABLE
67	1	5-09845A	WIRE SADDLE, SNAP RIVET
68	3	2-15457A	CABLE CLAMP- FLAT CABLE
<b>N/S</b>	<b>1</b>	<b>EAK0309J26A</b>	<b>MONITOR KIT-VIDEO BAL</b>
N/S	1	3-05708A	MONITOR-22 LCD W/SPEAKERS
N/S	4	1-54310A	SCREW SET M4X20
N/S	1	1-13533A	NUT BARB M4 (EXT WASHER)

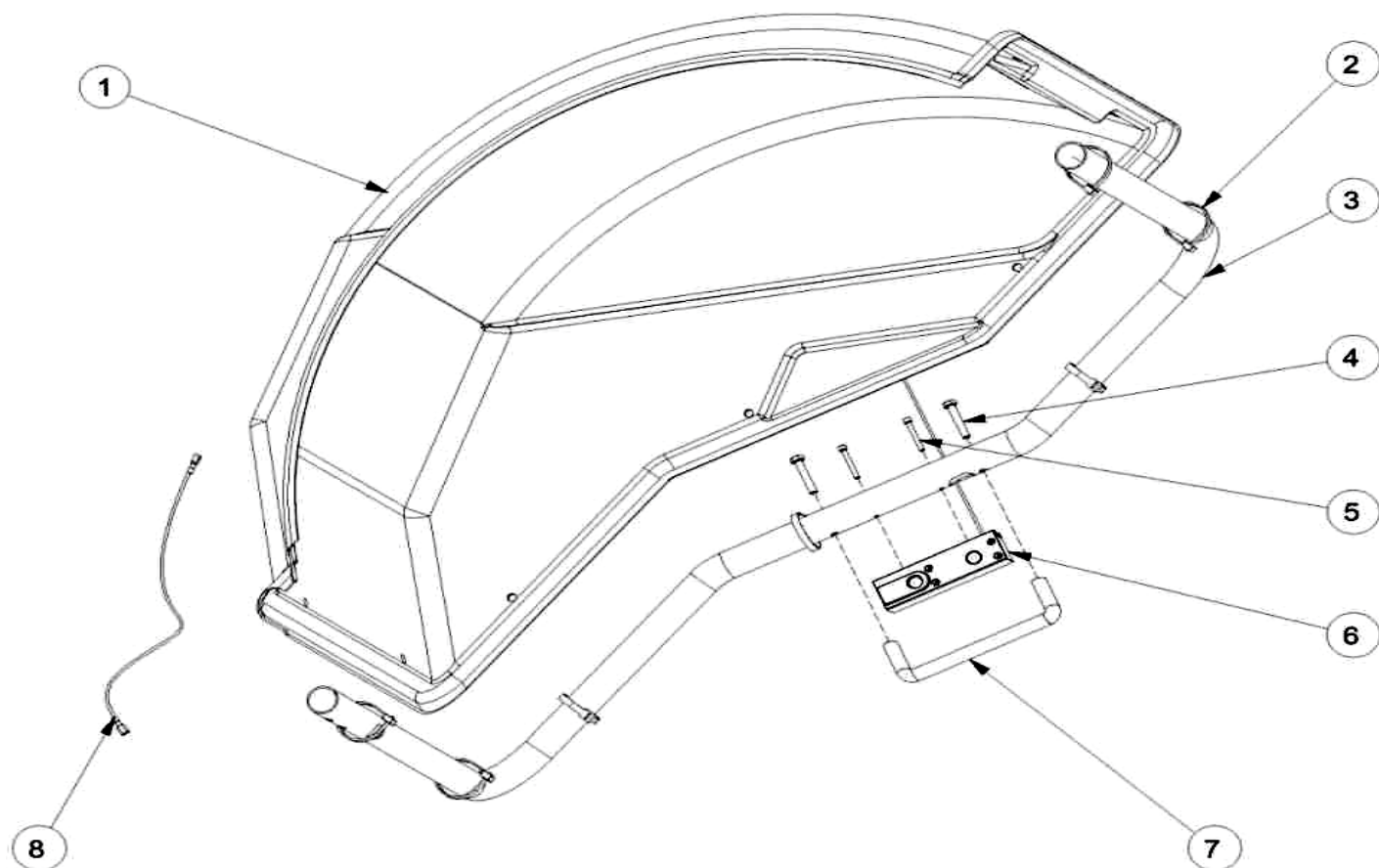


REF#	QTY	PART NUMBER	DESCRIPTION
1	1	1-01530	EYEBOLT-M8 X 50
2	1	1-04267A	SPRING-TORSION
3	1	1-06769A	GAS SPRING
4	1	1-10033	NUT, HEX, M8
5	10	1-10041	WASHER D.8 UNI6592-69/
6	4	1-10141	WASHER, PLAIN DIN 125A
7	2	1-15033	NUT-KEPS, M3 - .5
8	4	1-15933A	NUT - HEX, M8
9	1	1-12452	PINS - STRAIGHT SLOTTED 8X45 DIN 1481
10	1	1-7558	POP RIVET-3/16"
11	4	1-17709	SCREW - SHCS M8 X 20MM
12	2	1-18209	SHCS-M8 X 45
13	2	1-8133	NUT & WASHER ASSY 3/8 - 16
14	2	1-1101	SCREW - HHMS 3/8 - 16 X 2.00
15	8	1-22623A	SELF-TAPPING SCREW TCB
16	1	1-22441A	SHIM RING 32X45X1
17	1	EAS2177G41AC	FRONT BACKPACK
19	1	1-47810	SCREW, SET, FLT PT M8 - 1.25 X 8MM
20	2	1-02307A	SCREW - PHM, M3 X 25MM
21	2	1-9541	WASHER-FLAT, M3 DIN 125A
22	1	2-23201	TERMINAL LUG-6.3MM X .8MM POP RIVET
23	1	EAW0233J08B	CABLE-SWITCH ASSY
24	1	8-15218A	BUMPER 40X25 / M8
25	1	EAC0053J16A	MICROSWITCH PLATE
26	2	EAC0058D36A	WHEELGUARD BUSHING D.32
27	1	EAC0058D38A	SCHALTRING SWITCH SEGMENT
28	1	8-7216	PLUG-HOLE, 16MM DIA
30	1	EAM0084J39A	SHAFT STOP BLOCK
31	1	EAS2128J49A	ASSY BACK PACK
34	1	EAS2128J54A	WHEELGUARD SUPPORT
35	6	1-12624A	SCREW-HEX HD M4X.39 THRD FORMI

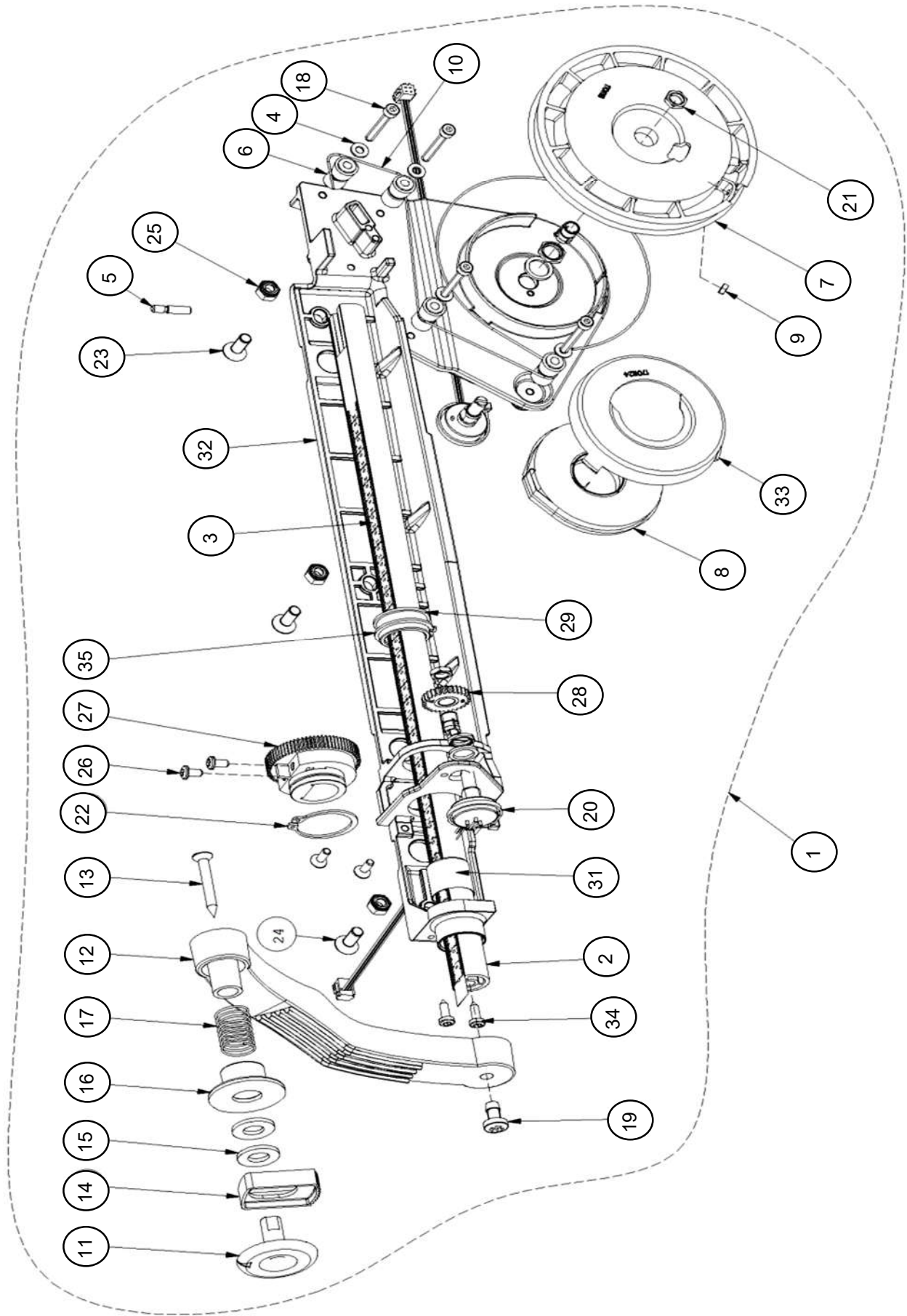


REF#	QTY	PART NUMBER	DESCRIPTION
1	1	EAA0394G93A	LASER POINTER WITH LONG CABLES
2	1	EAC0103G31A	VIBRATORY SYSTEM COVER
3	2	1-22623A	SCREW, PHIL PAN H.TAPP.
4	1	EAW0283G76A	LASER POINTER EXTENSION WIRE

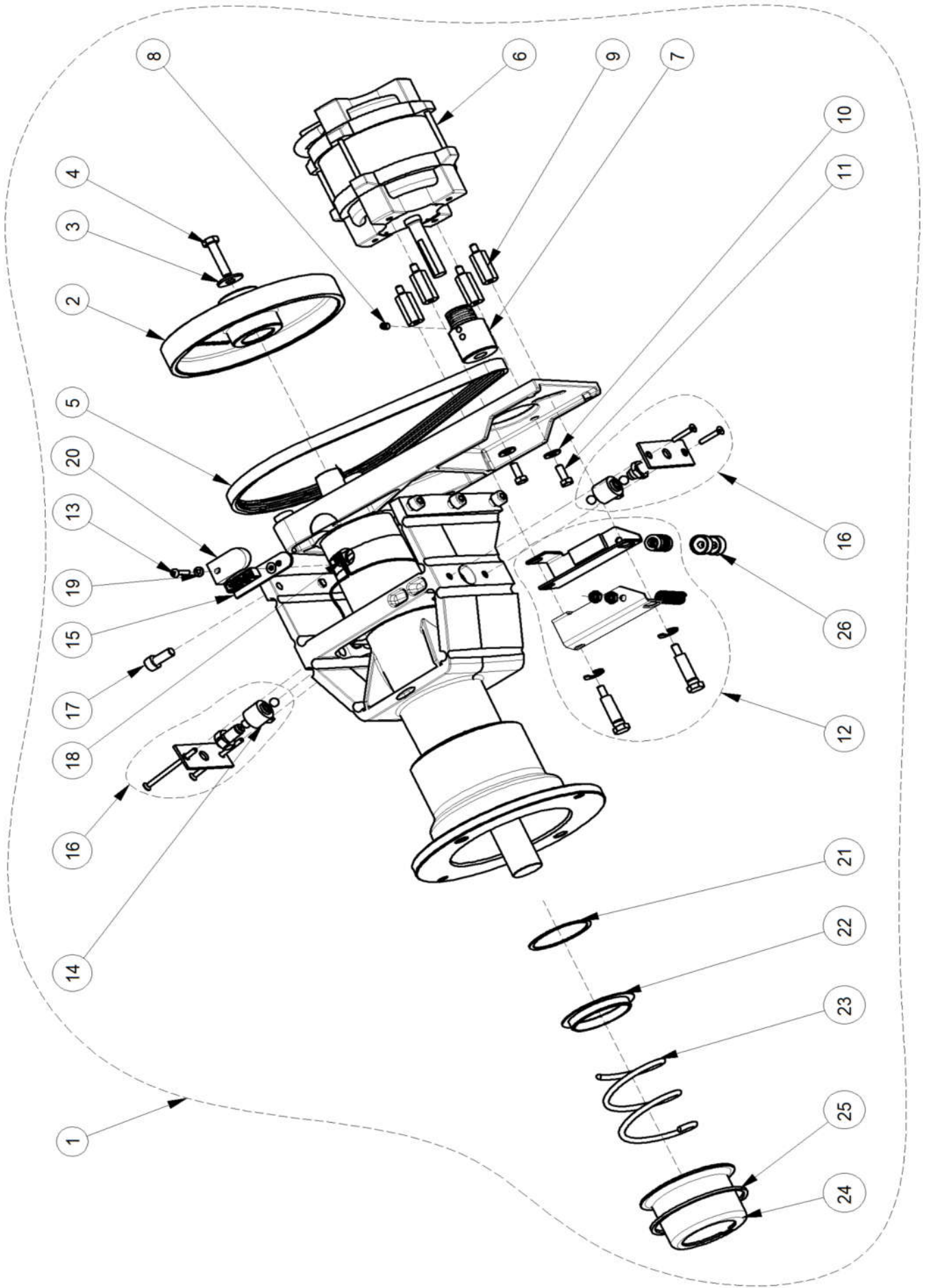




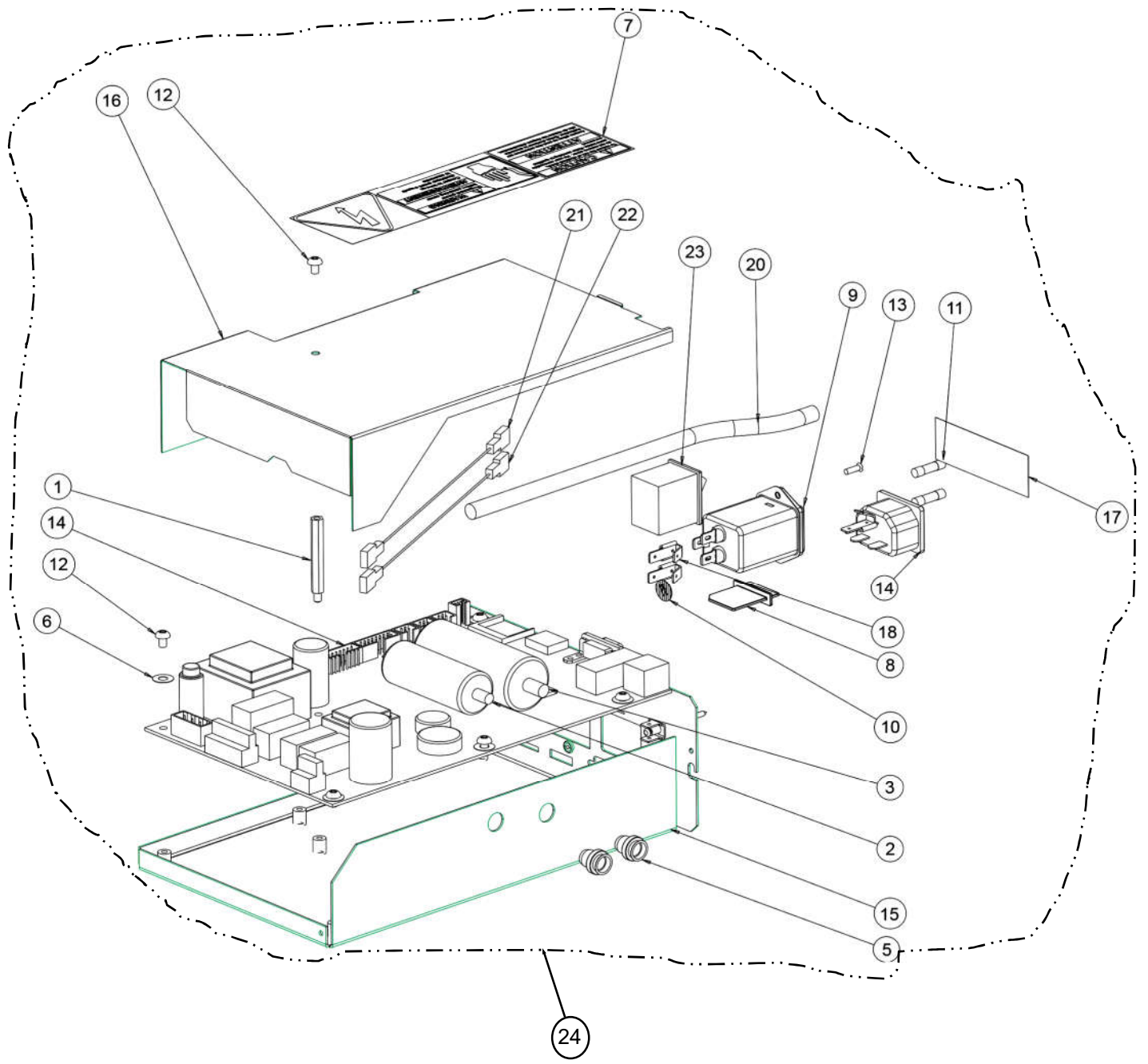
REF#	QTY	PART NUMBER	DESCRIPTION
1	1	EAC0100G21A	WHEEL GUARD 42"
2	7	5-03345A	CABLE TIE
3	1	EAM0076G34A	WHEEL GUARD PIPE
4	2	1-18209	SCREW, HEX M8 X 45
5	2	1-15509	SCREW HSHC 5X40 8G ZINC
6	1	EAA0373G96A	QR SONAR BOX ASSY-VIDEO BAL
	1	EAW0283G77A	CABLE SONAR SENSOR MID RANG
7	1	8-09233A	PLASTIC HANDLE-26784
8	1	EAW0283G76A	CABLE IIC SONAR SENSOR



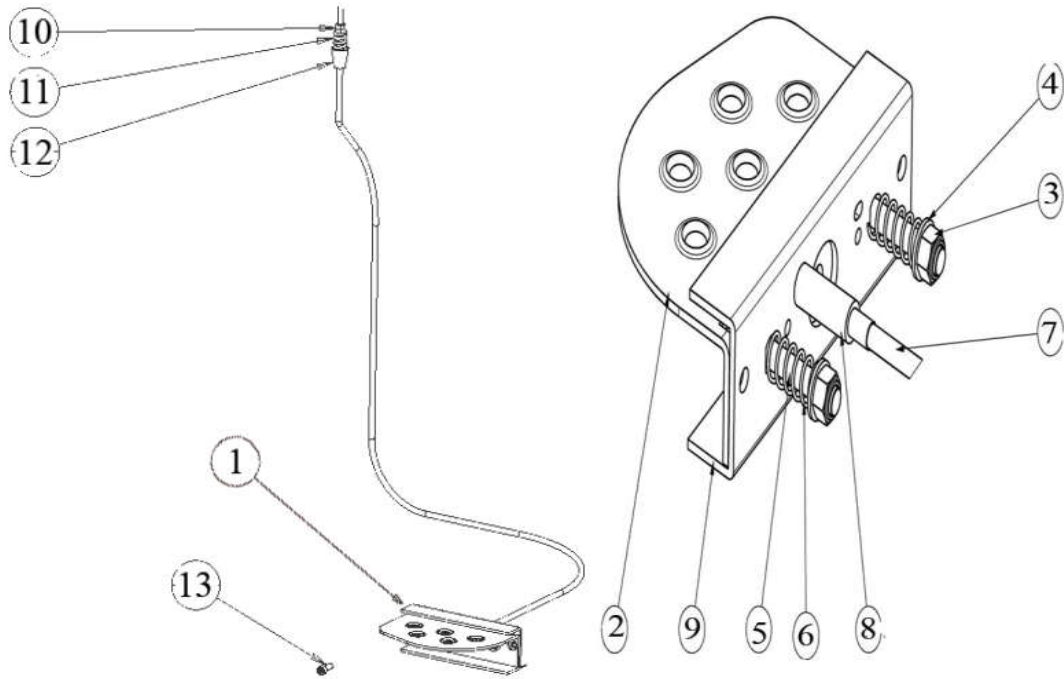
REF	QTY	PART NUMBER	DISCRIPTION
1	1	EAA0471G18A	M2 SAPE 1D-2D ASSY
2	1	EAM0053G19A	STANDARD. ROD SAPE, M2 ASTA
3	1	EAM0140G91A	DISTANCE SCALE DECAL (MM)
4	4	1-9641	WASHER
5	1	EAM0181G08A	MACHINED SCREW M4
6	4	EAM0005D35A	GUIDING REEL RULLO DI RINVIO
7	1	EAC0058D06A	RETURN PULLEY
8	1	1-08167A	STAND. SAPE TENSION SPRING
9	1	1-11233	NUT - M3 WHITE ZINCKED
10	1FT	6-00604A	ROPE SPECTRA 1000 D 0,6
11	1	EAC0058D11A	FEELER DISK
12	1	EAC0054P01A	ARM, AXCEL CALIPER
13	1	1-3624	SCREW POLYPLAST M5X40
14	1	EAC0058D09A	REGISTER, EJECTION
15	2	1-10141A1	WASHER P.D.10
16	1	EAC0058D10A	RING, PUSH
17	1	1-06868A	SPRING, COMPRESSION
18	4	1-13909	SCR - HEX SKT HD CAP M4X30
19	1	1-3824	SCREW M6X12
20	2	EAA0266D20A	POTENTIOMETER UNIT WITH NUT
21	2	2-07657A	CLAMPING DEVICE
22	1	1-13377A	CIRCLIP FOR SHAFT
23	3	1-22003A	SCREW 6X16 10K
24	2	1-17726A	SCREW TPS 9X13
25	3	1-9933	NUT, PREVAILING TORQUE M6
26	2	1-11726A	SCREW FOR PLAST. PHIL. PAN
27	1	EAC0058D12A	COG WHEEL 56 TEETH
28	1	EAC0058D13A	WHEEL GEAR
29	1	EAM0068G76A	S2-D2 BUSHING
31	1	1-13865A	BUSHING
32	1	EAM0125G67A	MACHINED SAPE SUPPORT FOR M CABINET
33	1	EAC0058D58A	SAFETY COVER
34	2	1-22623A	SCREW, PHIL PAN H.TAPP.
35	1	1-4577	RING SNAP



REF#	QTY	PART NUMBER	DESCRIPTION
1	1	EAA0364G85A	ALU VS MOT. INT. FL.D. 40/ UL
2	1	EAM0005D12A	DRIVE PULLEY
3	1	1-17841	WASHER - D. 8X24
4	1	1-32901	HEXAGON HEAD SCREW
5	1	8-3531	BELT
6	1	2-59366A	UL MOTOR INCL. CONNECTOR Y2K
7	1	EAM0005D08A	MOTOR PULLEY
8	1	1-28410	SCREW
9	4	EAM0005D09A	SPACER FOR MOTOR
10	2	1-16641	WASHER PLAIN
11	2	1-46701A	HEX HEAD SCREW
12	1	EAA0332G12A	MAIN SHAFT LOCK ASSEMBLY
	2	EAM0005D10A	BOLT SW13
	2	1-13177	CIRCLIP D. 9
	1	1-6568	COMPRESSION SPRING 1.6 X 10 X 58.5
	1	EAA0260D56A	BRAKE LEVER A CP L (UPPER)
	1	EAA0260D57A	BRAKE LEVER B CPL. (LOWER)
13	1	1-35006A	SCREW
14	2	EAA0260D59A	TRANSDUCER
15	1	EAA0344G00A	ENCODER BOARD W/ LENS
<b>16</b>	<b>1</b>	<b>EAA0328G16A</b>	<b>TRANSDUCER FIXING UNIT</b>
	4	8-1144	STEEL BALL 8 M
	2	1-6568	COMPRESSION SPRING 1.6 X 10 X 58.5
	2	EAM0005D07A	SETSCREW HEX SOCKET M10X1X29
	1	1-04634A	NUT HEX LOW M10X1 8-A2J ISO 8675
	2	1-17403	SCREW HEX SOCKET COUNT.H M4X25 8.8-
	2	1-19903A	SCREW HEX SOCKET COUNT.H M4X65 8.8-
	1	1-11833	HEXAGON NUT B M10 X 1 -8-A2J
17	6	1-17709	SCREW TCEI 8X20 8G
18	1	EAW0240G67A	CABLE WITHOUT TEMP. SENSOR
19	1	1-9641	WASHER
20	1	EAC0094G11A	ENCODER BOARD PROTECTION
21	1	1-17641	WASHER 53X60X1
22	1	EAC0058D14A	SPRING CENTERING RING
23	1	1-07768A	COMPRESSION SPRING
24	1	EAS2025D14A	SPRING GUIDE
25	1	1-13077	CIRCLIP SB 92
26	2	EAM0005D18A	SPACER

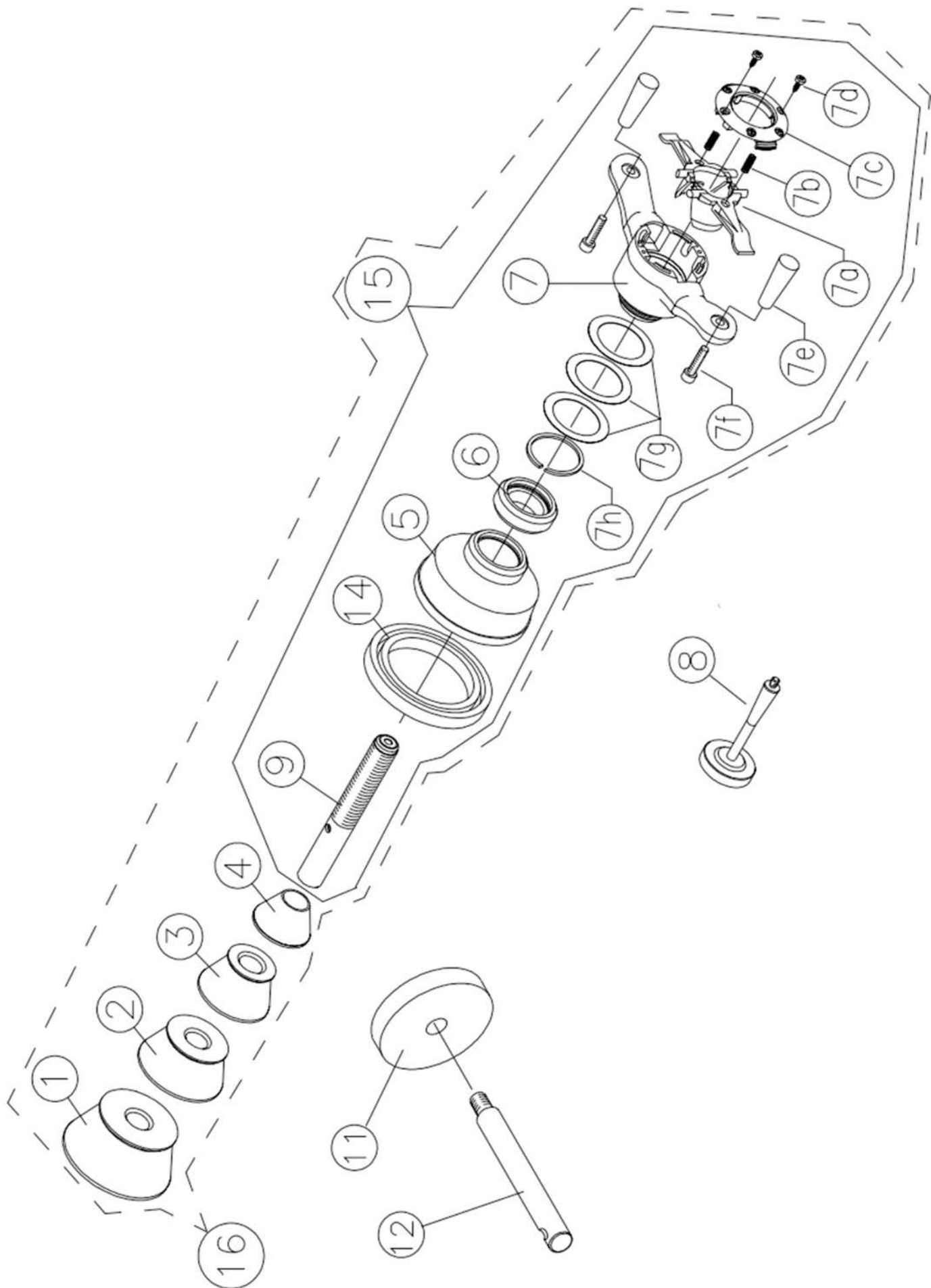


Ref#	Qty	Part number	description
1	1	1-16661A	SPACER M4x45
2	1	2-01429A	CAPACITOR - 10uF, 400V
3	1	2-01529A	CAPACITOR - 20uF, 400V
4	1	2-63348A	CONNECTOR AC OUTLET
5	2	1-18359A	THREADED INSERT M8x1,25
6	6	1-5547	WASHER-LOCK, EXT, M4
7	1	EAL0341J98A	LABEL-BALANCER WARNINGS, EBOX
8	1	EAC0087G52A	MEMORY CARD
9	1	2-68948A	POWER ENTRY MODULE
10	1	8-23762A	LABEL - EARTH SYMBOL
11	2	2-21251A	FUSE-TIME DELAY, 250V, 6.3 AMP
12	7	1-19804	SCREW, PHIL PAN HEAD M4x6 *
13	2	1-11103	SCREW-M3 X 10MM FHMS BLK
14	1	EAP0276G80A	LE VIDEO BRD PROGR. W 3-8
15	1	EAA0369J63A	FRAME ASSY LE VIDEO IBP
16	1	EAS2128J74A	COVER FOR TS VIDEO IBP BOX
17	1	EAL0349G44A	DECAL-FUSES
18	3	2-31001A	TERMINAL-QUICK CONNECT
19	1	EAW0233J06A	CABLE-IEC JUMPER
20	1	EAW0240G79A	CORD-MAIN
21	2	EAW0243P22A	CABLE-LINK WIRE BROWN
22	2	EAW0243P23A	CABLE-LINK WIRE BLUE
23	1	2-13258A	ROCKER SWITCH BLK
24	1	EAA0481G50AC	INTEGRATED L.E. VIDEO BOX PROG.


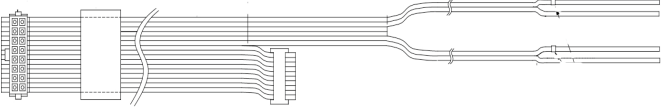





REF#	QTY	PART NUMBER	DESCRIPTION
1	1	EAA0263G07A	BRAKE PEDAL ASSM
2	1	EAS2020P20A	PEDAL-BRAKE JBEG
3	2	1-10033	NUT-ESNA, M8
4	2	1-10041	WASHER-PLAIN, M8
5	2	1-06768A	SCREW-SHCS, M8 X 45
6	2	EAA0344G15A	SPRING-COMPRESSION
7	1	EAM0053G06A	CABLE ASSY-BRAKE PEDAL ASSY
8	1	1-11633A	SPACER-BRAKE PEDAL ASSY
9	1	EAS2027G18A	SUPPORT-BRAKE CABLE
10	2	1-11633A	NUT-M6 X 5,2mmTHK, BLK
11	1	1-6668	COMPRESSION SPRING
12	1	EAC0053J15A	BRAKE SPACER





REF#	QTY	PART NUMBER	DESCRIPTION
1	1	EAM0003J69A	CONE (3.42 - 5.25)
2	1	EAM0005D25A	CONE 71-99MM/2.8-3.9IN
3	1	EAM0005D24A	CONE 96-114MM/3.8-4IN
4	1	EAM0005D23A	CONE (1.70 - 3.15)
5	1	EAC0058D07A	CUP-PRESSURE,HAWEKA
6	1	EAC0058D08A	DISK PRESSURE
7	1	EAA0263G79A	QUICK NUT KIT
7A	2	7409019-020	CLAMP JAWS SET
7B	2	1611128	DISC, SPRING
7C	2	ST0027000	COVER
7D	1	ST7417071	SCREW
7E	2	ST0027008	HANDLE
7F	2	ST7205389	SCREW, HANDLE
7G	3	ST0027005	SPACER
7H	1	ST7022499	C - CLIP
78	1	EAM0005D40A	CALIBRATION WEIGHT
79	1	EAM0021D90A	40 MM STUB SHAF
N/S	1	WWPR13A	PLIER WEIGHT SNAPON
14	1	EAC0058D15A	RUBBER RING
15	1	EAA0263G79A	QUICK NUT KIT

IMAGE	PART NUMBER	DESCRIPTION
	EAW0233J07A	HARNESS-WIRING, TRANSFORMER
	EAW0240G67A	CABLE WITHOUT TEMP. SENSOR
	EAW0233J08B	CABLE-SWITCH ASSEMBLY 47.5"
	EAW0283G76A	CABLE SONAR SENSOR EXT
	EAW0283G77A	CABLE IIC SONAR



Notice: The information contained in this document is subject to change without notice. Snap-on Equipment makes no warranty with regard to this material. Snap-on Equipment shall not be liable for errors contained herein or for incidental consequential damages in connection with furnishings, performance, or use of this material.

This document contains proprietary information which is protected by copyright and patents. All rights are reserved. no part of this document may be photocopied, reproduced, or translated without prior written consent

Snap-on Equipment  
309 Exchange Ave.  
Conway, Ar 72032  
501-450-1500