

**JohnBean**<sup>TM</sup>

Spare Parts Pieces de Rechange Tabla de repuestos



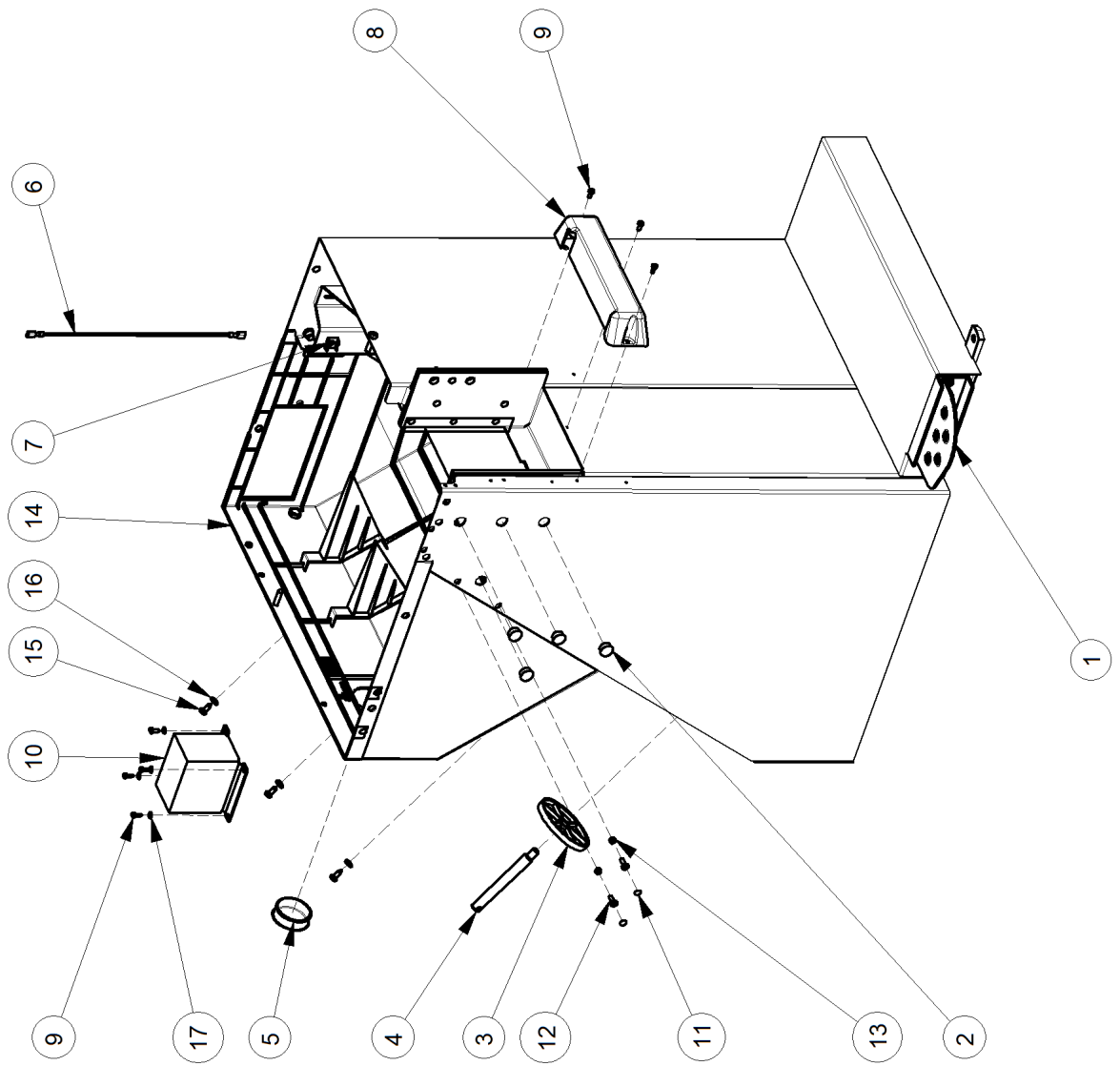
**B500**

- **(GB)**: in a given list, components sharing the same letter (A,B,C...), in the "Note" column are compatible.
- **(FR)**: dans une table, les composants qui présentent la même lettre (A,B,C...) dans la colonne "Note", sont compatibles.
- **(DE)**: Die in einer Tabelle aufgeführten Komponenten, die in der Spalte "Anmerkung" mit demselben Buchstaben (A,B, C...) gekennzeichnet sind, sind kompatibel.
- **(RU)**: В данном списке компоненты с одинаковыми буквами (А, В, С) в графе "Примечания" совместимы.
- **(IT)**: all'interno di una tabella, i componenti che presentano la medesima lettera (A,B,C...) nella colonna "Nota", sono compatibili.
- **(ES)**: dentro de una tabla, los componentes de la columna "Nota" que poseen la misma letra (A, B, C...) son compatibles.
- **(PT)**: em uma determinada tabela, os componentes que apresentarem a mesma letra (A,B,C...) na coluna "Nota", são compatíveis.

INDEX		Page
EAZ0070G62A_A2	CABINET	4
EAZ0070G53A_B2	WEIGHT TRAY	7
EAZ0070G52A_B	WHEEL GUARD SUPPORT	9
EAZ0070G51A	DISPLAY SUPPORT	13
EAZ0070G65A_C1	USER INTERFACE UNIT	15
EAZ0136G42A_B	SAPE 2D ASSEMBLY	18
EAZ0070G64A_1	ALU VIBRATORY SYSTEM INT.FLANGE	21
EAZ0033G88A_C	VIBRATORY SYSTEM	24
EAZ0070G58A_A2	LASER POINTER	27
EAZ0070G61A_B	WHEELGUARD AND SONAR	29
EAZ0088G23A	PEDAL ASSEMBLY	31
EAZ0089G37A_E	PEDAL P-CLAMP UL	33
EAZ0088G95A_D	POWER INLET ASSEMBLY	35
EAZ0088G16A_A1	MID-RANGE ACCESSORY BOX	37
EAZ0070G83A_1	POWER CLAMP ACCESSORIES	39
EEWB561AWD_C1	WIRING DIAGRAM	42
EEWB561AWD_C2	WIRING DIAGRAM	43
EEWB561APWD_C1	WIRING DIAGRAM	44
EEWB561APWD_C2	WIRING DIAGRAM	45

**UPDATING GUIDE:**

**Oct. 20: first release**



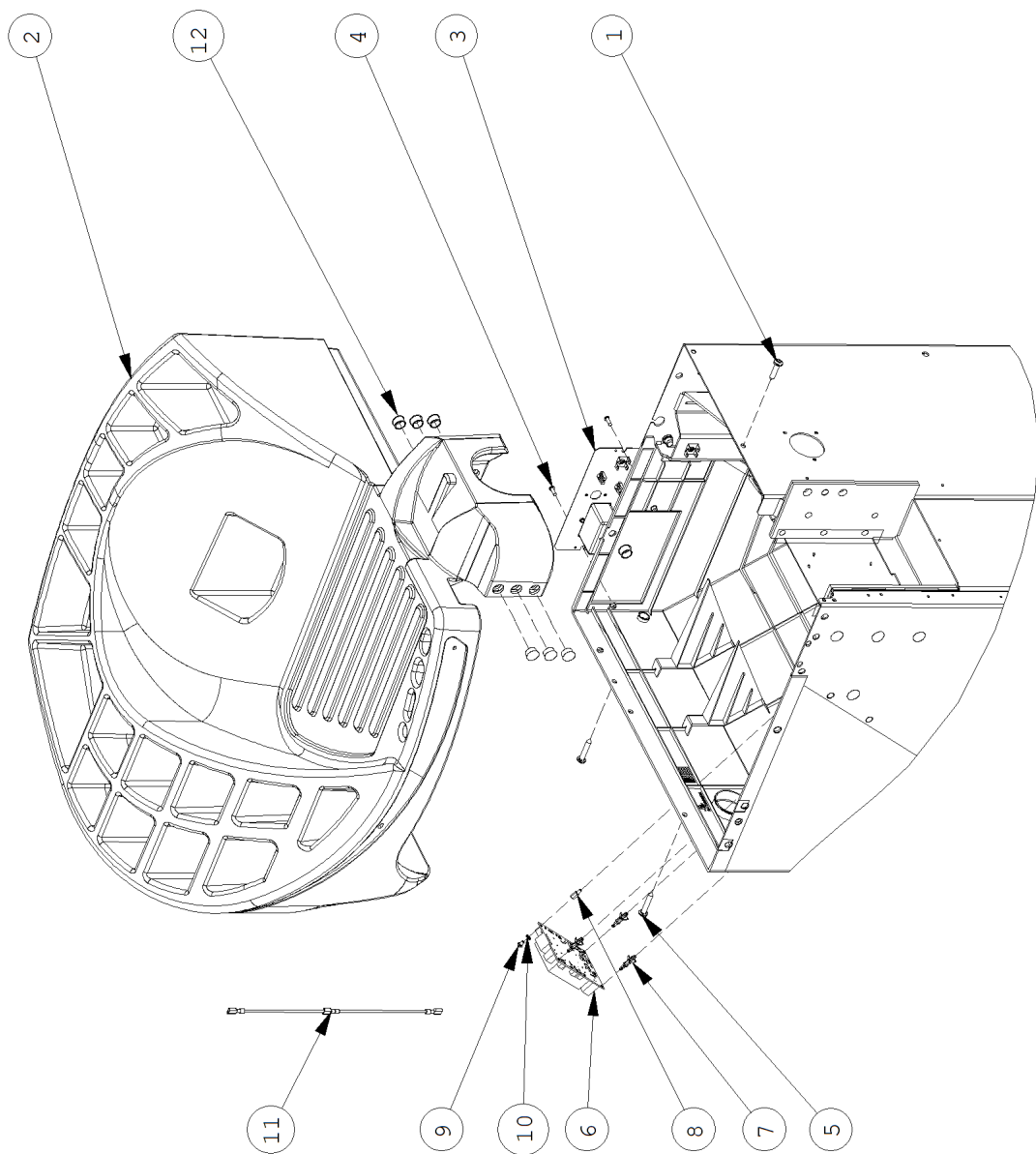
Pos	Code	Designation	Désignation	Designación	N.	Note	Nota	A	B	C
1	EAA0332G26A	p version Pedal, 2 switch	Pédale de version "p", 2 contact	Pedal "p", 2 conmutador	1			X		
1	EAA0263G07A	J-TYPE BRAKE PEDAL	GROUPE PEDALE FREIN J	GRUPO PEDAL FRENO J	1			X		X
1	EAA0372G98A	ALU BRAKE PEDAL 2 SWICTHES	PEDALE FREIN ALUMINIUM 2 MICRO	PEDAL FRENO ALUMINIO 2 MICRO	1	POWER CLAMP		X		X
2	EAC0060G00A	VIBRATORY SYSTEM HOLES CUP	BOUCHON, GROUPE MESURE	TAPON-GRUPO MEDIDAS	4			X		
3	EAC0060G02A	FLANGES PROTECTION	PROTECTION FLASQUES	PROTECCIÓN BRIDAS	4				X	
4	EAM0006G01A	FLANGE HOLDER PIN	AXE PORTE-FLASQUES	PERNO PORTA BRIDAS	4				X	
5	1-10576A	BLACK COV. CAP FOR SHEETMETAL	BOUCHON HABIL. NOIR POUR TOLES	TAPÓN NEGRO DE COB. PARA CHAPAS	1			X		
6	EAW0265G40A	GROUNDING CONDUCTOR	CABLE TERRE	CABLE TIERRA	1			X		
7	2-23201	FLAT PLUG GROUNDING 4-POL.	CONNECTEUR PLAT TERRE	CONECTOR PLATO M/TIERRA	1	M12X35 8.8 A2J		X		
8	EAM0062G50A	VIBRATORY SYST. COV BOTTOM	HABIL. INF.GROUPE MES. RAL9005	COBERTURA INF. GRUPO MIS. RAL9005	1	SONAR VERSION		X		
8	EAC0100G60A	VIBRATORY SYST. COV BOTTOM	HABIL. INFER. GROUPE MES.	COBERT. INF. GRUPO MIS.	1				X	
9	1-22623A	SCREW, PHIL PAN H.TAPP.	VIS AUTOTAR.	TORNILLO AUTORR.	7	D3,9X13 TCB ZB 7981 C		X		
10	7-01802A	Insulating transformer 100/230V	TRANSFORMATEUR 100/230V	Transformador 100/230V	1	JP 100/230 500VA 50-60Hz 230/230V		X		X
10	EAA0363G31A	Insulating transformer	TRANSFORMATEUR	Transformador	1	E-BOX Conn.		X		X
10	EAA0373G90A	Insulating transformer 230/230V	TRANSFORMATEUR 230/230V	Transformador 230/230V	1	300VA 50Hz		X		X
10	EAA0373G92A	Insulating transformer 100/230V	TRANSFORMATEUR 100/230V	Transformador 100/230V	1	500VA 50-60Hz		X		X
11	1-10476A	BLACK CAP FOR SCREWS M5	BOUCHON NOIR POUR VIS M5	TAPÓN CASQUETE NEGRO TORNILLOS M5	2				X	

**A** = available - disponible - disponible

**B** = on request - sur demande - a petición

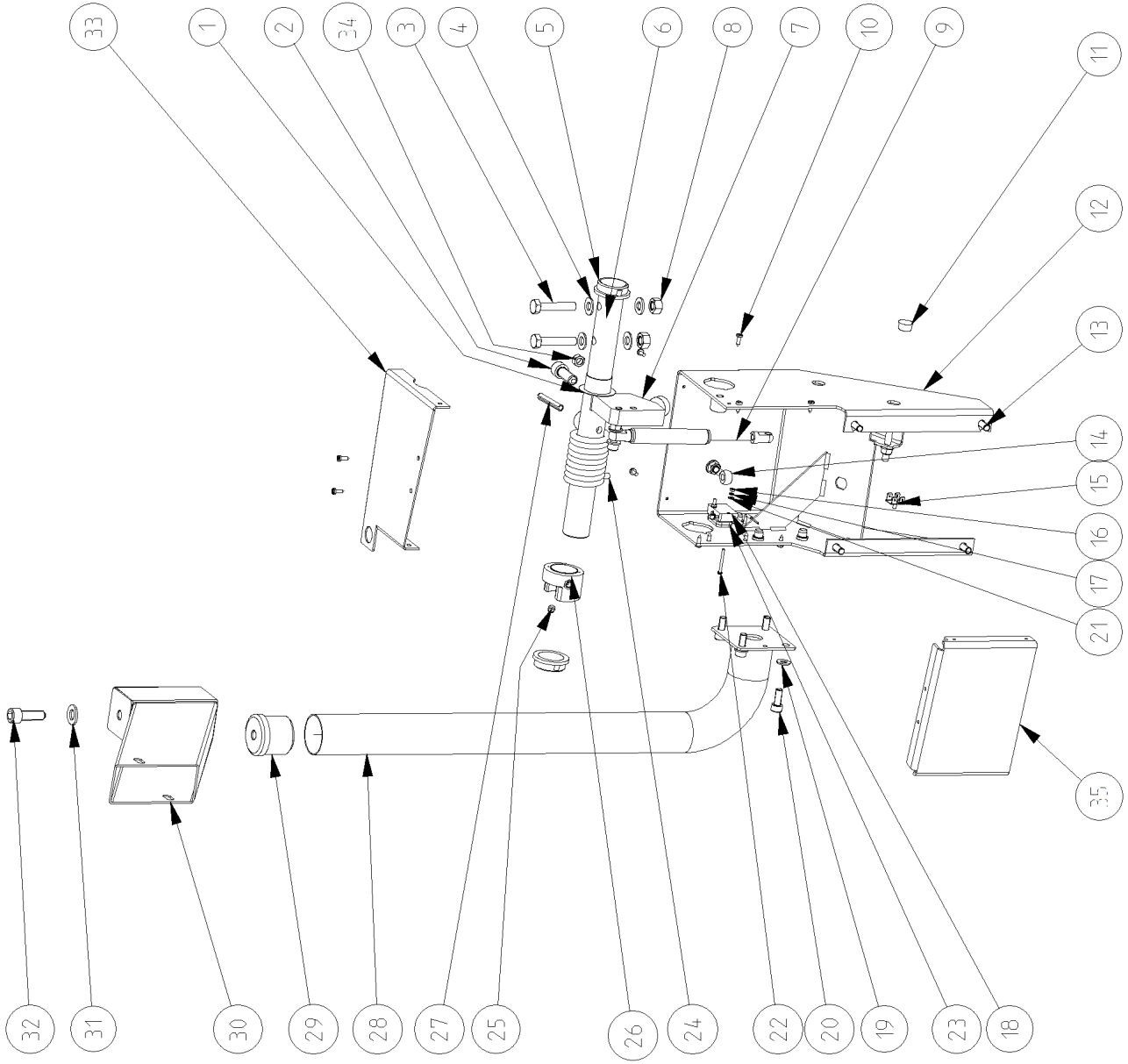
**C** = suggested - suggeré - sugerido

Pos	Code	Designation	Désignation	Designaciòn	N.	Note	Nota	A	B	C
12	1-25503A	SCREW TSEI	VIS FHc	TORNILLO TSEI	2	5X16 10.9			X	
13	1-11533	HEX NUT	ECROU	TUERCA	2	8 A2J 934			X	
14	EAC0100G63A	PLASTIC COVER ASSY M2	HABILLAGE PLASTIQUE M2	GRUPO COBERTURA PLÁSTICA M2	1			X		
15	1-22323A	SELF-TAPPING SCREW	VIS AUTOTAR.	TORNILLO AUTORR.	9	"D5,5X15 MM"			X	
16	1-9841	WASHER,PLAIN d6 ZINC.	RONDELLE d.6	ARANDELA P.D.6 GALVANIZ.	7	D6 UNI6592-69			X	
17	1-9641	WASHER	RONDELLE	ARANDELA	7	DIN 433 D4X9X0,8 ISO 7089		X		



Pos	Code	Designation	Désignation	Designación	N.	Note	Nota	A	B	C
1	1-16609A	SCREW TCEI	VIS CHc	TORNILLO TCEI	2	M6X30 8.8 BR UNI 5931-67		X		
2	EAK0329G19A	WEIGHT TRAY KIT	KIT PLAN PORTE-POIDS	KIT MESA PORTAPESAS	1				X	
3	EAA0458G37A	ASSY POWER INLET W/O CAPACITORS	GROUPE ENTRÉE ALIMENTATION SANS COND	GRUPO ENTRADA ALIMENTACIÓN SIN CONDE	1			X		
4	1-09326A	SCREW FOR PLASTIC	VIS AUTOTARAUD. POUR PLASTIQUE	TORNILLO AUT. PARA PLAST.	2	D4X12		X		
5	1-16609A	SCREW TCEI	VIS CHc	TORNILLO TCEI	2	M6X30 8.8 BR UNI 5931-67		X		
6	EAP0276G50A	A-Weight Laser Board	Carte A-Weight Laser	Tarjeta A-Weight Laser	1			X		X
7	2-07932A	Locking board support	Support aut. board	Soporte aut. board	3	LCBS-2-6-01			X	
8	1-11961A	Threaded Spacer	Entretoise	Distanciador	1	,M4X10 M/F			X	
9	1-19804	Screw, Phil Pan head M4X6	VIS CB	Tornillo	1	M4 x 6 UNI 7687			X	
10	1-5547	WASHER	RONDELLE	ARANDELA	1	Ø 4,2			X	
11	EAW0276G39A	CABLE ASM, AWP ENCODER	CABLE ENCODEUR AWP	CABLE ENCOGER AWP	1			X		X
12	EAC0060G00A	VIBRATORY SYSTEM HOLES CUP	BOUCHON, GROUPE MESURE	TAPON-GRUPO MEDIDAS	6			X		





Pos	Code	Designation	Désignation	Designación	N.	Note	Nota	A	B	C
1	1-22441A	SHIM RING	RONDELLE D'ARASEMENT	ARANDELA DE ENRASE	1	32X45X1 DIN988		X		
2	1-20409	SCREW,HEX SOCKET HEAD CAP	VIS CHc	TORNILLO TCEI	1	M12X35 8.8 A2J 912		X		
3	1-19901	SCREW, HEX HEAD MACCHINE	VIS H	TORNILLO TE	2	D.32		X		
4	1-10141A1	WASHER P.d.10	RONDELLE D 10	ARANDELA D 10	4			X		
5	EAC0058D36A	WHEELGUARD BUSHING	DOUILLE GUIDE PROTECTION ROUE	CASQUILLO GUÍA PROTECCIÓN RUEDA	2	D.32		X		
6	EAM0076G37A	W.G. SHAFT	ARBRE PROTECTION ROUE	ÁRBOL PROTECCIÓN RUEDA	1			X		
7	EAM0076G38A	WHEELGUARD STOP	ARRET PROTECTION ROUE ZING.	TOPE PROTECCIÓN RUEDA CINC.	1			X		
8	1-18733A	NUT,SELF LOCK. ALL-METAL	ECROU M10 AUT.FR. MET.	TUERCA M10 AUT.INS.MET.	2	M10 A2J 6925		X		
9	1-06769A	GAS SPRING	AMORTISSEUR	AMORTIGUADOR	1			X	X	
10	1-22623A	SCREW, PHIL PAN H.TAPP.	VIS AUTOTAR.	TORNILLO AUTORR.	11	D3,9X13 TCB ZB 7981 C		X		
11	EAC0060G00A	VIBRATORY SYSTEM HOLES CUP	BOUCHON, GROUPE MESURE	TAPON-GRUPO MEDIDAS	1			X		
12	EAS2133G38A	WHEELGUARD AND MONITOR SUP.	SUPPORT ECRAN ET PROT. R.	SOPORTE MONITOR Y PROT. R.	1			X		
12	EAS2138G32A	WHEELGUARD AND MONITOR SUP.	SUPPORT ECRAN ET PROT. R.	SOPORTE MONITOR Y PROT. R.	1	Hofmann		X		
13	1-17709	SCREW TCEI 8X20 8G	VIS CHc	TORNILLO TCEI	4	M8X100 8K ISO 4762		X		
14	1-02330A	EYE-SCREW	VIS A CAILLET	TORNILLO CON RANURA	1			X		
14	1-01530	EYE-SCREW M8x50	VIS A CAILLET	TORNILLO CON RANURA	1			X		
15	2-23201	FLAT PLUG GROUNDING 4-POL.	CONNECTEUR PLAT TERRE	CONECTOR PLATO M/TIERRA	1	M12X35 8.8 A2J		X		

**A** = available - disponible - disponible

**B** = on request - sur demande - a petición

**C** = suggested - suggeré - sugerido

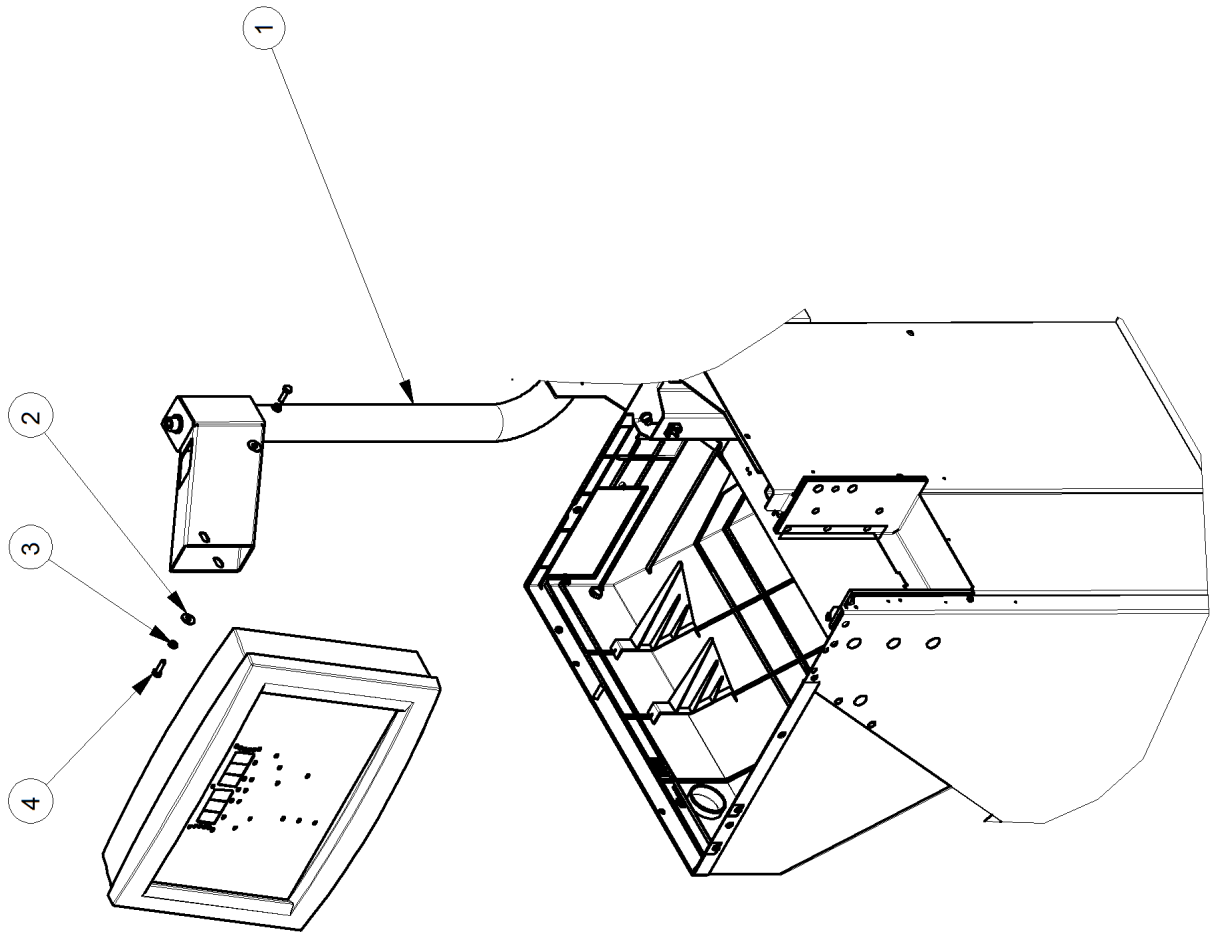
Pos	Code	Designation	Désignation	Designación	N.	Note Nota	A	B	C
16	1-11233	NUT - M3 WHITE ZINCKED	ECROU M3 6S	TUERCA M3 CL.8 ZINC.	2	M3 CL.8 ZINC. UNI5588-65	X		
17	1-1248	WASHER, TOOTHED EXTERNAL	RONDELLE	ARANDELA DENTADA EXT.	2	D.3 DIN 6798/A	X		
18	2-7261	WHEELGUARD SWITCH	INTERRUPTEUR PROTECTION ROUE	INTERRUPTOR PROTECCIÓN RUEDA	1		X		X
19	1-10041	WASHER D.8	RONDELLE DIAM 8	ARANDELA PLANA D.8 GALVANIZ.	12	D8-UNI6592-69 DIN 125 8.8	X		
20	1-32601	SCREW TE 8X20 8.8	VIS H	TORNILLO TE	4		X		
20	1-17709	SCREW TCEI 8X20 8G	VIS CHc	TORNILLO TCEI	4	M8X100 8K ISO 4762 Ø 3	X		
21	1-9541	WASHER PLAIN D3	RONDELLE d.3	ARANDELA PLANA D.3 GALVANIZ.	2	DIN 125A TC M3x30 4S, ZINC	X		
22	1-7104	SCREW, SLOTTED CHEESE HEAD	VIS C	TORNILLO TC	2	UNI 6107-67	X		
23	EAC0053J16A	MICROSWITCH PLATE	PLAQUETTE MICRORUPTEUR	PLACA MICROINTERRUPTOR	1		X		
24	1-04267A	WHEELGUARD SPRING	RESSORT PROTECTION ROUE	MUELLE PROTECCIÓN RUEDA	1		X		
25	1-49010A	SCREW, SOCKET WITH CUP POINT	VIS FHc ENJOLIVEUR	TORNILLO STEI P. CAJA	1		X		
26	EAC0058D38A	MICRO FIXING RING	BAGUE FIXATION MICRO	ANILLO FIJACIÓN MICRO	1		X		
27	1-12452	PINS - STRAIGHT SLOTTED	BROCHE ELASTIQUE	PASADOR ELÁSTICA	1	8X45 1481 FOR JB MODEL	X		
28	EAS2138G10A	MONITOR SUPPORT PIPE	TUBE SUPPORT ECRAN	TUBO SOPORTE MONITOR	1		X		
28	EAS2138G35A	MONITOR SUPPORT PIPE	TUBE SUPPORT ECRAN	TUBO SOPORTE MONITOR	1	HOFMANN	X		
28	EAS2170G07A	MONITOR SUPPORT PIPE	TUBE SUPPORT ECRAN	TUBO SOPORTE MONITOR	1	SNAP-ON	X		
29	1-11576A	THREADED CAP	BOUCHON PLASTIQUE	TAPÓN CON ROSCA	1	M12	X		

**A** = available - disponible - disponible

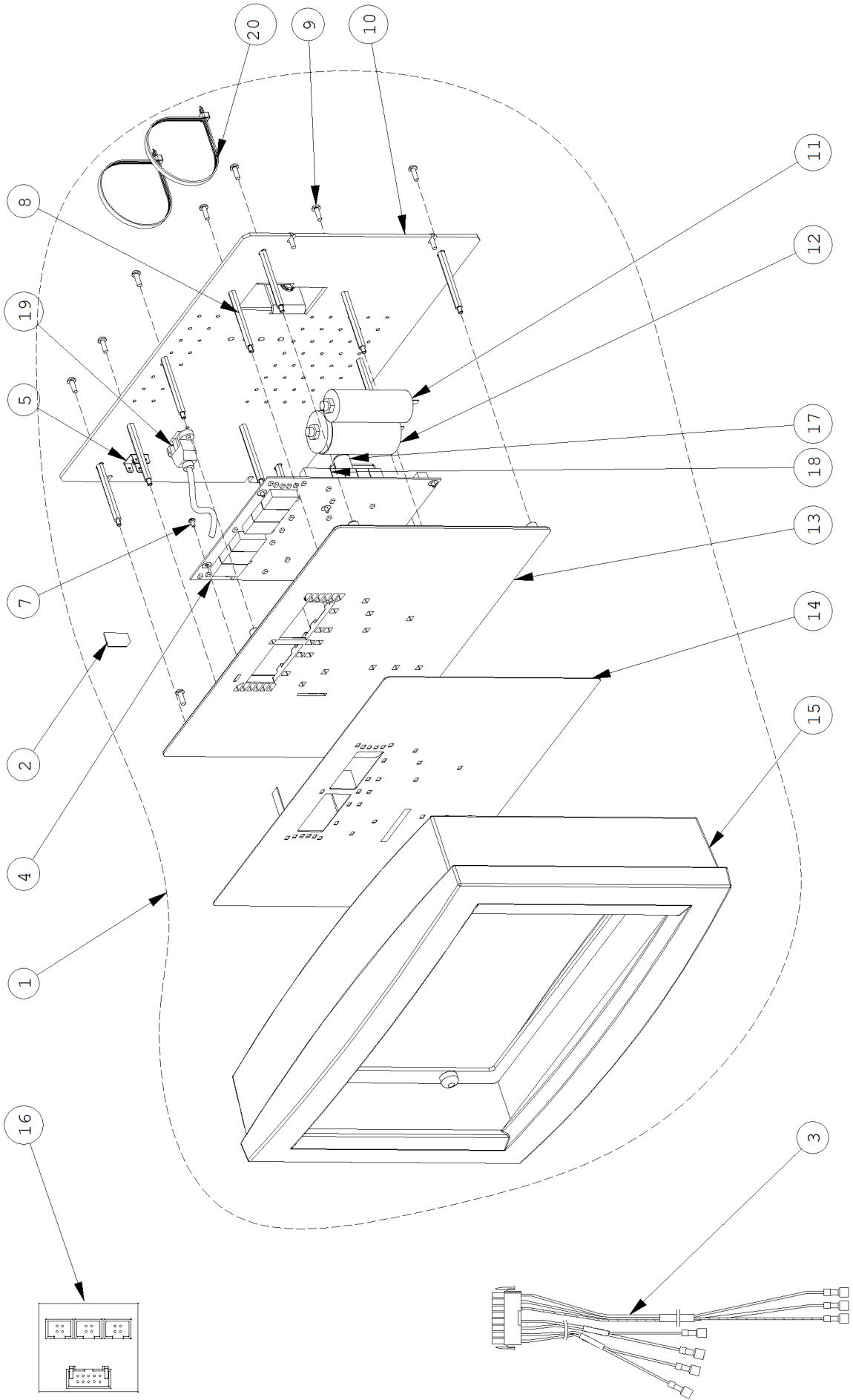
**B** = on request - sur demande - a petición

**C** = suggested - suggeré - sugerido

Pos	Code	Designation	Désignation	Designación	N.	Note	Nota	A	B	C
30	EAS2138G17A	ASSY VESA SUPPORT	GROUPE RACCORD VESAS	GRUPO CONEXIÓN VESA	1			X		
31	1-10241A	WASHER -PISTON d.12	RONDELLE DIAM 12	ARANDELA P.D.12 GALVANIZ.	4	D12x24x2.5		X		
32	1-20409	SCREW,HEX SOCKET HEAD CAP	VIS CHc	TORNILLO TCEI	1	DIN 433 M12X35 8.8 A2J 912		X		
33	EAS2133G36A	COVER WHEELG. SUPP.	HABIL.PROT. ROUE	COBER. PROT RUEDA	1			X		
33	EAS2138G30A	COVER WHEELG. SUPP.	HABIL.PROT. ROUE	COBER. PROT RUEDA	1	Hofmann		X		
34	1-11733	NUT M8	ECROU M8 6S	TUERCA M8 6S	3	M8 8K / DIN934 UNI5588-65		X		
35	EAS2177G41A	BACK PACK FRONT COVER	COVERTURE FRONTALE BACK PACK	COBERTURA FRONTALBACK PACK	1				X	



Pos	Code	Designation	Désignation	Designaciòn	N.	Note	Nota	A	B	C
1	EAA0392G17A	DISPLAY SUPPORT	SUPPORT AFFICHEUR GS	SOPORTE DISPLAY GS	1	JB		X		
1	EAA0392G73A	DISPLAY SUPPORT	SUPPORT AFFICHEUR GS	SOPORTE DISPLAY GS	1	HOFMANN		X		
2	1-20041A	WASHER - d.6X18	RONDELLE d.6X18	ARANDELA COMUN D.6X18 GALVANIZ.	2	d.6X18		X		
3	1-2746	WASHER - GROWER	RONDELLE GROWER	ARANDELA GROWER	2	D6		X		
4	1-30901A2	SCREW TE 6X20 8G	VIS H	TORNILLO TE	2	UNI 1751 6X20 8.8 Z.B.		X		



Pos	Code	Designation	Désignation	Designación	N.	Note	Nota	A	B	C
1	EAA0377G36A	ASSY INTEGRATED KEYBOARD JB H/D /P	GROUPE BOÎTE À BOUTONS INTÉGRÉE JB H/I	GUPO TECLADO INTEGRADO JB H/D/P	1	P-Clamp			X	
1	EAA0426G25A	ASSY INTEGRATED KEYBOARD/P	GROUPE BOÎTE À BOUTONS INTÉGRÉE	GUPO TECLADO INTEGRADO /P	1	B500			X	
1	EAA0426G28A	ASSY INTEGRATED KEYBOARD/P	GROUPE BOÎTE À BOUTONS INTÉGRÉE	GUPO TECLADO INTEGRADO /P	1	GEO 7500			X	
1	EAA0426G64A	ASSY INTEGRATED KEYBOARD/P	GROUPE BOÎTE À BOUTONS INTÉGRÉE	GUPO TECLADO INTEGRADO /P	1	SNAPON			X	
2	3-78426AF1	PROGRAMMED MMC / SD CARD	CARTE PROGRAMMÉE DE MMC/SD	TARJETA MMC / SD PROGRAMADA	1	B300,GEO7300		X		X
2	3-52226AF1	PROGRAMMED MMC / SD CARD	CARTE PROGRAMME DE MMC / SD	TARJETA MMC / SD PROGRAMADA	1			X		X
3	EAW0277G78A	USER INTERFACE JB H/D /P HARNESS	CÂBLAGE BOÎTE À BOUTONS JB H/D /P	CABLEADO TECLADO JB H/D/P	1			X		X
3	EAW0286G49A	USER INTERFACE JB H/D /P HARNESS	CÂBLAGE BOÎTE À BOUTONS JB H/D /P	CABLEADO TECLADO JB H/D/P	1	Laser Pointer		X		X
4	EAP0290G50A1	INTEGRATED LED DISPLAY NEW GENERATIC	CARTE AFFICHEUR LED INTEGR. NEW GENE	TARJETA DISPLAY LED INTEGR.NEW GENERA	1	B300, GEO 7300		X		X
5	2-23201	FLAT PLUG GROUNDING 4-POL.	CONNECTEUR PLAT TERRE	CONECTOR PLATO M/TIERRA	1	NEW GENERATION M12X35 8.8 A2J		X		
7	1-17226A	SELF TAPPING SCREW	VIS AUTO VISSANT	TORNILLO AUTOFIETANTE	5	D 3x6		X		
8	1-16561A	SPACER	ENTRETOISE	DISTANCIADOR	10	M6X40		X		
9	1-24606A	SCREW	VIS	TORNILLO	14	M4x12 UNI 7687		X		
10	EAS2098G03A	DISPLAY SUPPORT PLATE	TÔLE SUPPORT AFFICHEUR	CHAPA SOPORTE DISPLAY	1			X		
11	2-01429A	CAPACITOR	CONDENSATEUR	CONDENSADOR	1	10µF 400V		X		
12	2-01529A	CAPACITOR	CONDENSATEUR	CONDENSADOR	1	20µF 400V		X		X
13	EAC0099G63A	LARGE KEYBOARD SUPPORT	SUPPORT CLAVIER LARGE	SOPORTE TECLADO LARGE	1			X		

**A** = available - disponible - disponible

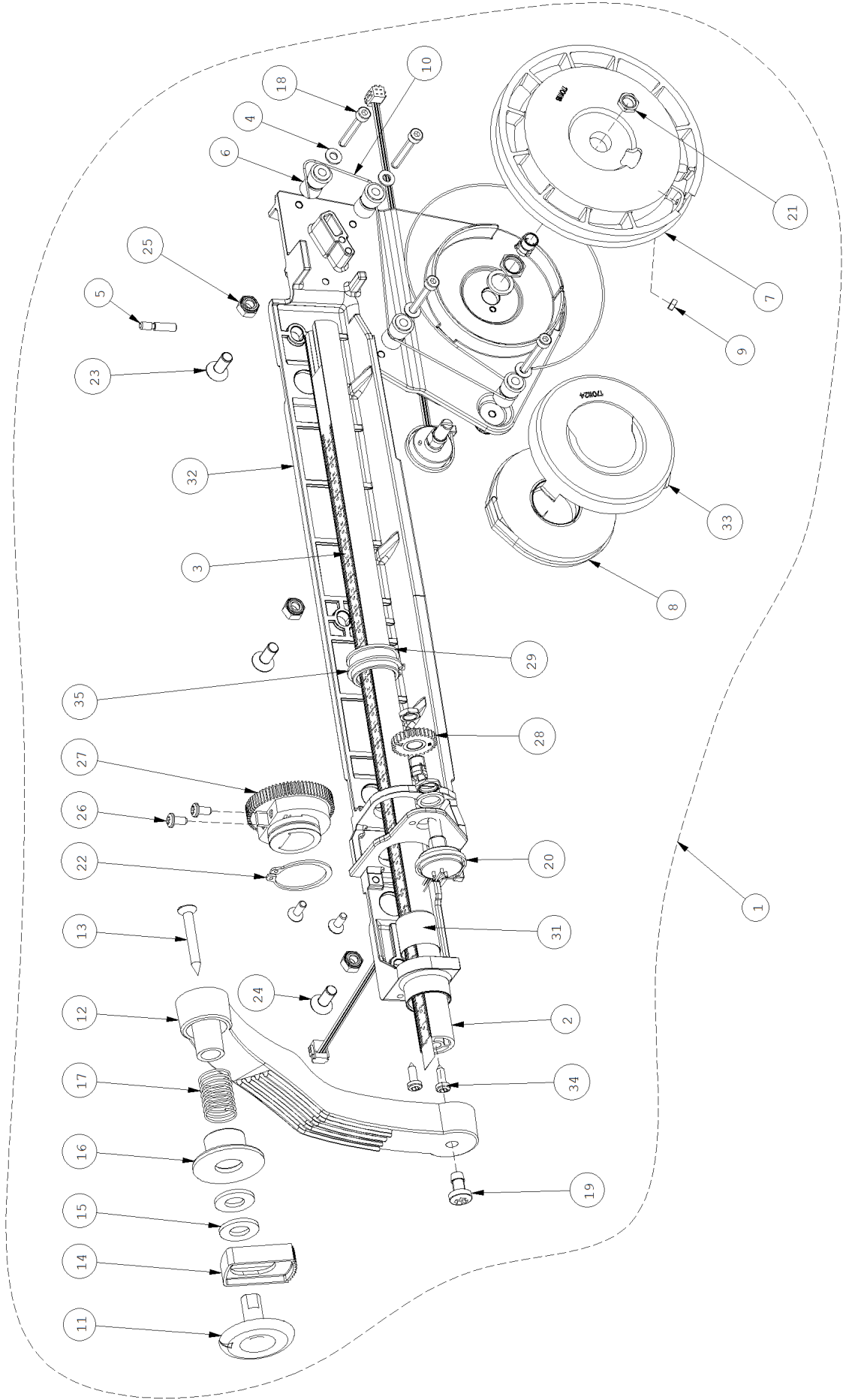
**B** = on request - sur demande - a petición

**C** = suggested - sugeré - sugerido



Pos	Code	Designation	Désignation	Designación	N.	Note Nota	A	B	C
14	EAL0425G23A	BIG PANEL MEMBRANE	PLAQUE ADHÉSIVE PANNEAU GRAND	PLACA ADHESIVA PANEL GRANDE	1	4550	X		
14	EAL0425G29A	BIG PANEL MEMBRANE	PLAQUE ADHÉSIVE PANNEAU GRAND	PLACA ADHESIVA PANEL GRANDE	1	SNAPON		X	
14	EAL0425G31A	BIG PANEL MEMBRANE	PLAQUE ADHÉSIVE PANNEAU GRAND	PLACA ADHESIVA PANEL GRANDE	1	B500	X		
14	EAL0462G47A	BIG PANEL MEMBRANE	PLAQUE ADHÉSIVE PANNEAU GRAND	PLACA ADHESIVA PANEL GRANDE	1	S1480		X	
15	EAC0100G33A	CONSOLE DISPLAY BLACK	TABLEAU DE BORD AFFICHEUR NOIR	PANEL DE CONTROL DISPLAY NEGRO	1		X		
16	EAP0275G10A	POTENTIOMETERS INTERFACE BOARD	CARTE INTERFACE POTENTIOMÈTRES	TARJETA INTERFAZ POTENCIÓMETROS	1		X		
17	2-31151A	FUSE TIME LAG T	FUSIBLE T	FUSIBLE T	1	500mA 250V 5x20mm	X		X
18	2-31251A	FUSE TIME LAG T	FUSIBLE T	FUSIBLE T	1	3.15A 250V 5x20mm	X		X
19	6-14422A	B USB CABLE PANEL	CÂBLE USB B DU PANNEAU	CABLE USB B DESDE PANEL	1		X		
20	5-05145A	PIPE CLAMP	COLLIER TUYAUX HUILE	COLLAR TUBOS ACEITE	2	4,8X300	X		

EAZ0136G42A.B



Pos	Code	Designation	Désignation	Designación	N.	Note Nota	A	B	C
1	EAA0471G18A	M2 SAPE 1D-2D ASSY	M2 SAPE 1D-2D ASSY	M2 SAPE 1D-2D ASSY	1	ASSY GRUPPO	X		
2	EAM0053G19A	STANDARD. ROD SAPE, M2	JAUGE ETALON M2 UNIFIE	VARILLA CALIBRE M2 UNIFICADO	1		X		
3	EAM0140G91A	DISTANCE SCALE DECAL (MM)	PLAQUE JAUGE ETALON EN MM	TARJETA VARILLA CALIBRE EN MM.	1	SAPE M2	X		
4	1-9641	WASHER	RONDELLE	ARANDELA	4	D4X9X0,8 ISO 7089 M4	X		
5	EAM0181G08A	MACHINED SCREW M4	VIS USINÉE	TORNILLO MECANIZ.	1		X		
6	EAM0005D35A	GUIDING REEL	ROULEAU DE RENVOI	RODILLO DE REENVÍO	4		X		
7	EAC0058D06A	Return pulley	Poulie renvoi	Polea de reenvío	1		X		
8	1-08167A	STAND. SAPE TENSION SPRING	RESSORT RETOUR JAUGE SAPE UNIF.	MUELLE RETORNO VARILLA SAPE UNIF.	1			X	
9	1-11233	NUT - M3 WHITE ZINCKED	ECROU M3 6S	TUERCA M3 CL.8 ZINC.	1	M3 CL.8 ZINC. UNI5588-65 "0,52M"	X		
10	6-00604A	ROPE SPECTRA 1000 D 0,6	CORDE SPECTRA 1000 D 0,6	CUERDA SPECTRA 1000 D 0,6	0,9		X		
11	EAC0058D11A	Feeler disk	Disque de contact	Disco palpador	1		X		X
12	EAC0054P01A	ARM, AXCEL CALIPER	JAUGE ETALON	BRAZO VARILLA CALIBRE	1		X		
13	1-3624	SCREW POLYPLAST	VIS AUTOTAR. POUR PLAST.	TORNILLO AUTOENROSC. PARA PLAST.	1	M5x40	X		
14	EAC0058D09A	REGISTER, EJECTION	GUIDE D'EXPULSION	GUÍA DE EXPULSIÓN	1		X		
15	1-10141A1	WASHER P.d.10	RONDELLE D 10	ARANDELA D 10	2		X		
16	EAC0058D10A	RING, PUSH	BAGUE DE POUSSEE	ANILLO DE EMPUJE	1		X		
17	1-06868A	SPRING, COMPRESSION	RESSORT DE COMPRESSION	MUELLE DE COMPRESIÓN	1	2098(B)	X		

**A** = available - disponible - disponible

**B** = on request - sur demande - a petición

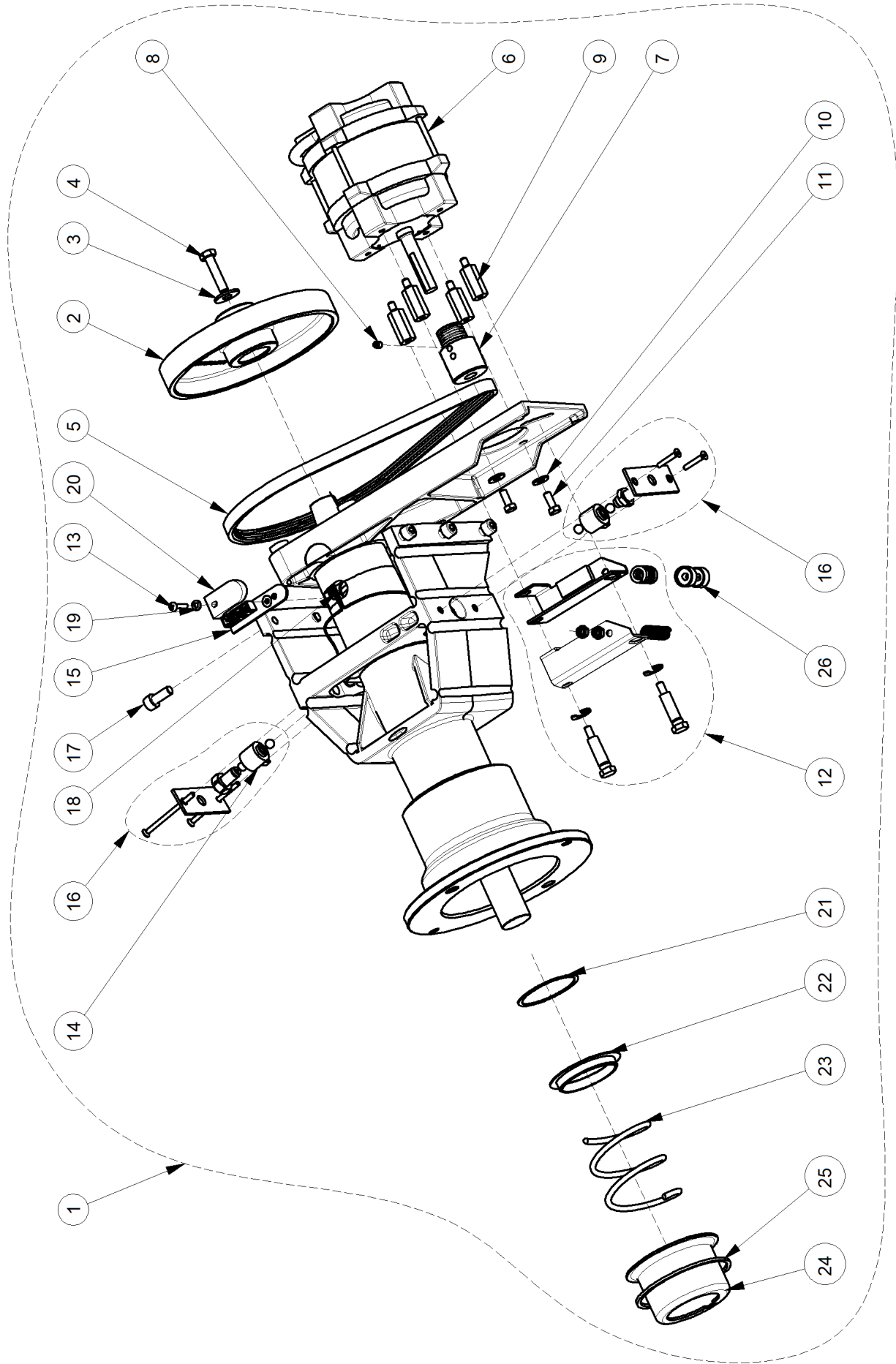
**C** = suggested - suggeré - sugerido

Pos	Code	Designation	Désignation	Designación	N.	Note	Nota	A	B	C
18	1-13909	SCR - HEX SKT HD CAP	VIS CHc ZING.	TORNILLO TCEI	4	M4x30		X		
19	1-3824	SCREW	VIS AUT. TC CRUCIF.	TORNILLO AUTOM.TC CRUZ	1	912 M6x12 DIN 7516AE		X		
20	EAA0266D20A	Potentiometer unit with nut	Groupe potentiomètre avec écrou	Grupo del potenciómetro con tuerca	2			X		
21	2-07657A	CLAMPING DEVICE	DOUILLE A PINCE	CASQUILLO DE PINZA	2			X		
22	1-13377A	CIRCLIP FOR SHAFT	CIRCLIP	ANILLO SEEGER	1	D.27		X		
23	1-22003A	SCREW 6X16 10K	VIS FHc	TORNILLO TSEI	3	UNI 7435 M6X16		X		
24	1-17726A	SCREW TPS	VIS AUTOF.	TORNILLO AUTOF.	2	DIN 7991 9X13		X		
25	1-9933	NUT, PREVAILING TORQUE M6	ECROU M6 AUTO-BL.	TUERCA M6 AUT. BAS.CL.6	3	DIN7982-F 3, M6		X		
26	1-11726A	SCREW FOR PLAST. PHIL. PAN	VIS POUR PLASTIQUE AUTOTAR.	TORNILLO PARA PLÁSTICO AUTOENROSC.	2	DIN 985 M=4,0 x 8 PLASTIC		X		
27	EAC0058D12A	COG WHEEL 56 TEETH	ENGRENAGE 56 DENTS	ENGRANAJE 56 DIENTES	1			X		
28	EAC0058D13A	Wheel gear	Engrenage roue	Rueda del engranaje	1			X		
29	EAM0068G76A	S2-D2 BUSHING	BRIDE	CASQUILLO	1			X		
31	1-13865A	BUSHING	DOUILLE	CASQUILLO	1	IGUS GSM202120		X		
32	EAM0125G67A	MACHINED SAPE SUPPORT for M Cabinet	SUPPORT SAPE S2	SOPORTE SAPE S2	1			X		
33	EAC0058D58A	Safety cover	Couvercle de sécurité	Tapa de seguridad	1			X		
34	1-22623A	SCREW, PHIL PAN H.TAPP.	VIS AUTOTAR.	TORNILLO AUTORR.	2	D3,9X13 TCB ZB 7981 C		X		
35	1-4577	RING SNAP	ANNEAU	ANILLO TOPE	1	"D25X1,2"		X		

**A** = available - disponible - disponible

**B** = on request - sur demande - a petición

**C** = suggested - suggeré - sugerido



Pos	Code	Designation	Désignation	Designación	N.	Note	Nota	A	B	C
1	EAA0338G53A	ALU VS MOT. INT. FL.D. 40/28,5 POL. RING	ENSEMBLE VIBRATOIRE	GRUPO DE MEDIDA	1			X		
1	EAA0364G85A	ALU VS MOT. INT. FL.D. 40/28,5 POL. UL	ENSEMBLE VIBRATOIRE UL	GRUPO DE MEDIDA UL	1			X		
2	EAM0005D12A	DRIVE PULLEY	POULIE D'ENTRAÎNEMENT	POLEA DE TRANSMISIÓN	1			X		
3	1-17841	WASHER - d. 8X24	RONDELLE d.8X24	ARANDELA COMUN D.8X24 GALVANIZ.	1	d. 8X24		X		
4	1-32901	HEXAGON HEAD SCREW	VIS H	TORNILLO TE	1	UNI6593		X		
5	8-3531	BELT	COURROIE	CORREA	1	M8X35	933	X		
6	2-59266A	MOTOR INCL. CONNECTOR Y2K	MOTEUR	MOTOR CON CONECTOR Y2K	1	5PJ711		X		X
6	2-59366A	UL MOTOR INCL. CONNECTOR Y2K	UL MOTEUR	UL MOTOR CON CONECTOR Y2K	1	7867	US ONLY	X		
7	EAM0005D08A	MOTOR PULLEY	POULIE MOTEUR	POLEA MOTOR	1		WS 120W	X		
8	1-28410	SCREW	VIS	TORNILLO	1	M6X8		X		
9	EAM0005D09A	SPACER FOR MOTOR	PIÈCE D'ÉCARTEMENT DU MOTEUR	DISTANCIADOR PARA MOTOR	4	915		X		
10	1-16641	Washer plain	Rondelle plate	Arandela plana	2	D. 6,4		X		
11	1-46701A	HEX HEAD SCREW	VIS H	TORNILLO TE	2	9021	M6X16	X		
12	EAA0332G12A	MAIN SHAFT LOCK ASSEMBLY	ENS. DE BLOCAGE ARBRE PRINCIPAL	FRENO DE PARO COMPLEM	1	933		X		
13	1-35006A	SCREW	VIS	TORNILLO	1	M4X20		X		
14	EAA0260D59A	TRANSDUCER	CAPTEUR	TRANSDUCTOR	2	7985		X		X
15	EAA0344G00A	OPTO-ELECTRONIC UNIT	CARTE OPTO-ENCODER AVEC LENTILLE	TARJETA OPTO-ENCODER CON LENTE	1			X		X

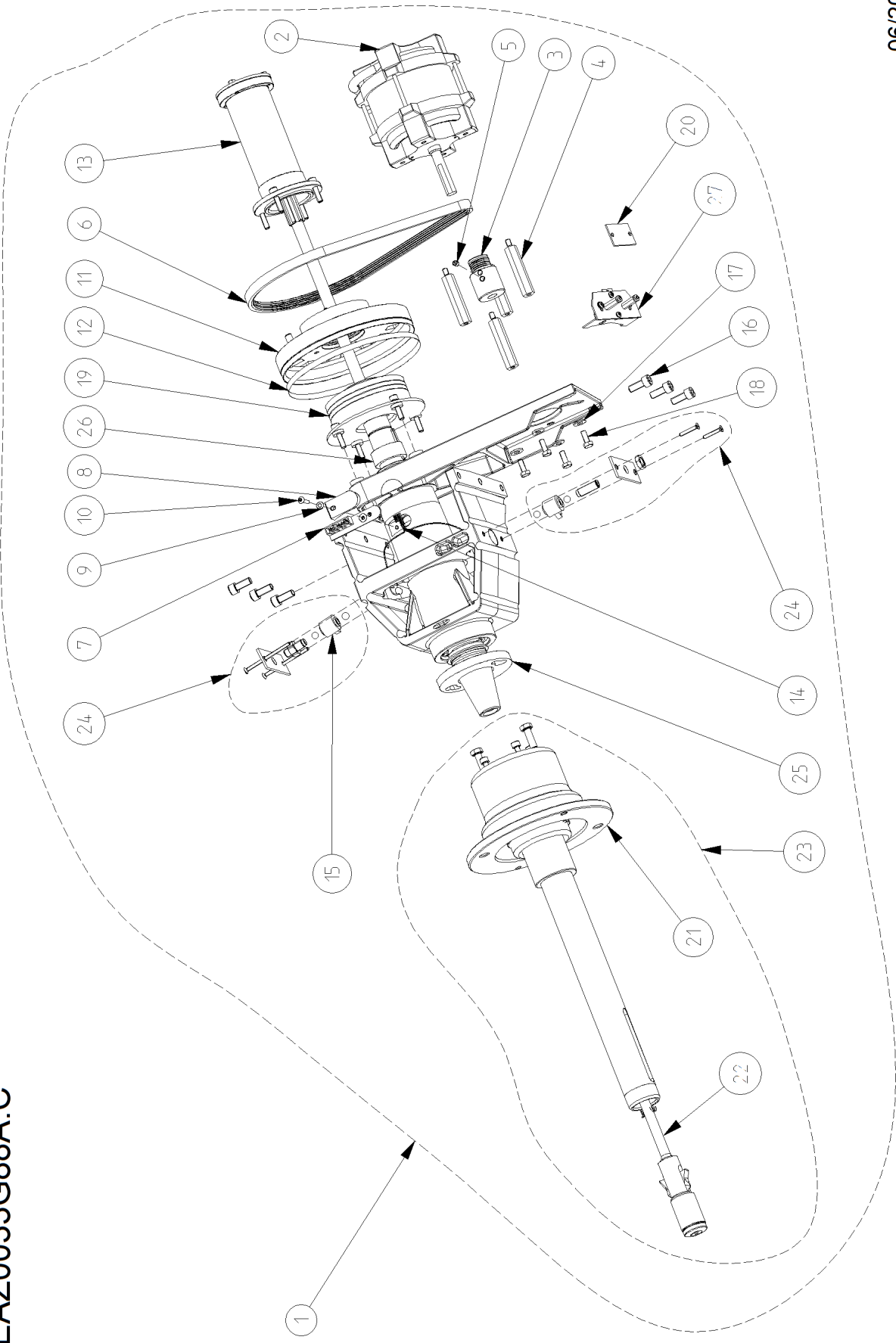
**A** = available - disponible - disponible

**B** = on request - sur demande - a petición

**C** = suggested - suggeré - sugerido

Pos	Code	Designation	Désignation	Designación	N.	Note	Nota	A	B	C
16	EAA0328G16A	TRANSDUCER FIXING UNIT	MOYENS DE FIXATION DU CAPTEUR	GRUPO FIJACIÓN PIEZA	1			X		X
17	1-17709	SCREW TCEI 8X20 8G	VIS CHc	TORNILLO TCEI	6	M8X100 8K		X		
						ISO 4762				
18	EAW0240G67A	CABLE WITHOUT TEMP. SENSOR	CÂBLE SANS CAPTEUR DE TEMPER.	CABLE SIN SENSOR TEMPERATURA	1			X		X
19	1-9641	WASHER	RONDELLE	ARANDELA	1	D4X9X0,8		X		
						ISO 7089				
20	EAC0094G11A	ENCODER BOARD PROTECTION	PROTECTION CARTE ENCODER	PROTECCIÓN TARJETA ENCODER	1			X		
21	1-17641	WASHER 53x60x1	RONDELLE	ARANDELA	1			X		
22	EAC0058D14A	Spring centring ring	Anneau de centrage du ressort	MUELLE de centraje del anillo	1			X		
23	1-07768A	Compression spring	Ressort à pression	MUELLE a presión	1	5X63X180		X		
						2098				
24	EAS2025D14A	Spring guide	Carter ressort	Guía del muelle	1			X		
25	1-13077	CIRCLIP	ANNEAU	ANILLO ELÁSTICO	1	SB 92		X		
26	EAM0005D18A	SPACER	ENTRETOISE	DISTANCIADOR	2			X		

EAZ0033G88A.C



06/2016



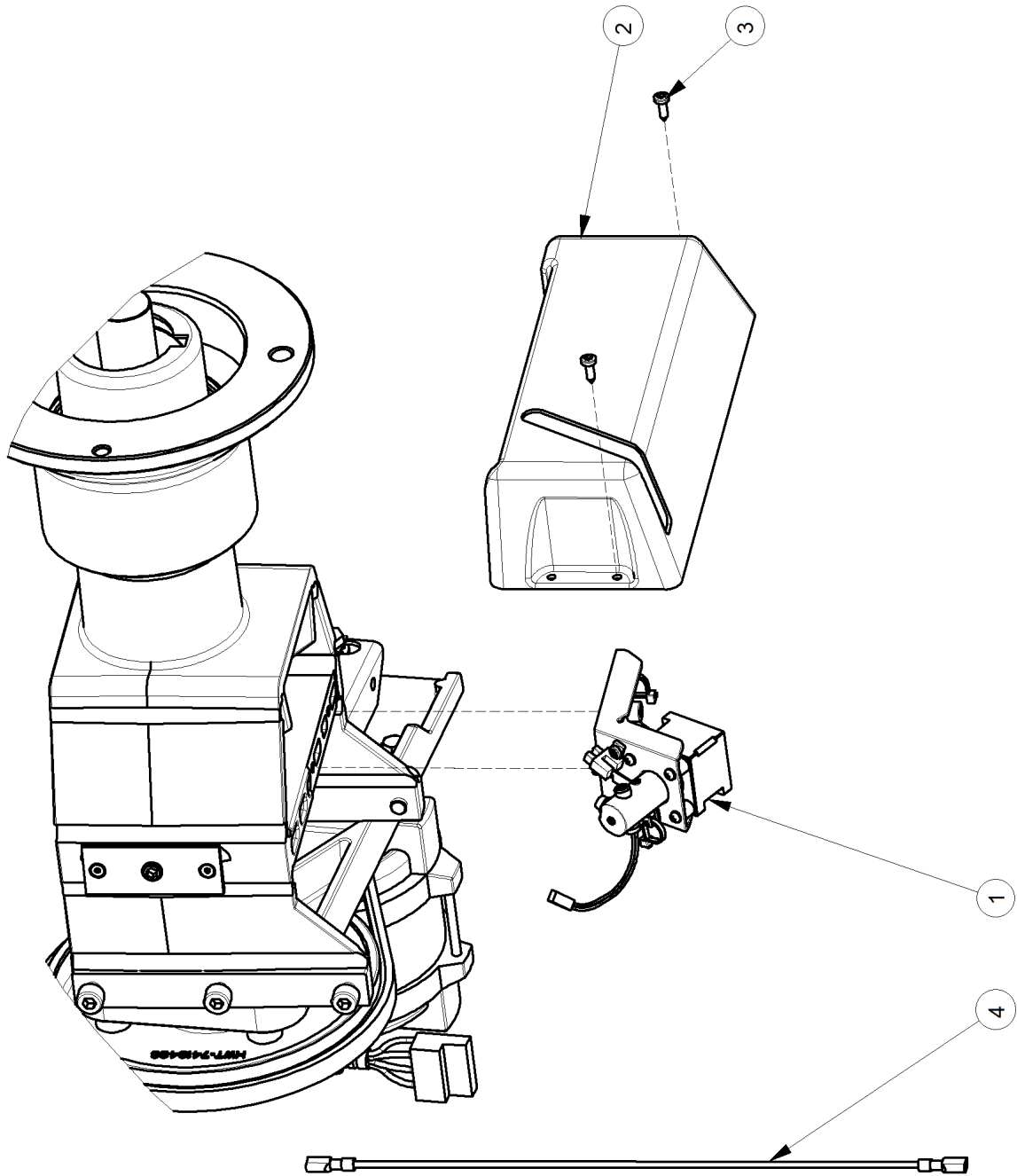
Pos	Code	Designation	Désignation	Designación	N.	Note Nota	A	B	C
1	EAA0382G00A	ALU MEASUREMENT UNIT L	ALU GROUPE DE MESURE L	ALU GRUPO DE MEDIDA L	1	P-CLAMP	X		
1	EAA0392G39A	ALU UL MEASUREMENT UNIT	ALU GROUPE DE MESURE UL	ALU GRUPO DE MEDIDA UL	1	P-CLAMP	X		
1	EAA0393G05A	ALU MEASUREMENT UNIT L	ALU GROUPE DE MESURE L	ALU GRUPO DE MEDIDA L	1	US ONLY P-CLAMP Long cable	X		
2	2-59266A	MOTOR INCL. CONNECTOR Y2K	MOTEUR	MOTOR CON CONECTOR Y2K	1		X		
2	2-59366A	UL MOTOR INCL. CONNECTOR Y2K	UL MOTEUR	UL MOTOR CON CONECTOR Y2K	1	US ONLY WS 120W Long cable	X		
2	2-67766A	MOTOR INCL. CONNECTOR Y2K	MOTEUR	MOTOR CON CONECTOR Y2K	1		X		
3	EAM0005D08A	MOTOR PULLEY	POULIE MOTEUR	POLEA MOTOR	1		X		
4	EAM0061G82A	UNIT MOTOR SPACER	PIÈCE D'ÉCARTEMENT DU MOTEUR	DISTANCIADOR MOTOR GRUPO	4	P-CLAMP	X		
5	1-28410	SCREW	VIS	TORNILLO	1	M6X8	X		
6	8-3531	BELT	COURROIE	CORREA	1	915 5PJ711 7867	X	X	
7	EAA0344G00A	OPTO-ELECTRONIC UNIT	CARTE OPTO-ENCODER AVEC LENTILLE	TARJETA OPTO-ENCODER CON LENTE	1		X	X	
8	EAC0094G11A	ENCODER BOARD PROTECTION	PROTECTION CARTE ENCODER	PROTECCIÓN TARJETA ENCODER	1		X		
9	1-9641	WASHER	RONDELLE	ARANDELA	1	D4X9X0,8	X		
10	1-35006A	SCREW	VIS	TORNILLO	1	ISO 7089 M4X20 7985	X		
11	EAM0021D18A	MOTOR PULLEY	POULIE MOTEUR	POLEA MOTOR	1		X		
12	EAM0005D64A	ENCODER BAR CODE	CODE A BARRES ENCODEUR	CÓDIGO DE BARRAS ENCODER	1		X		
13	EAA0307G36A	REPLACEMENT KIT "P"	KIT DE REMPLACEMENT "P"	KIT DE SUSTITUCIÓN "P"	1		X		

**A** = available - disponible - disponible

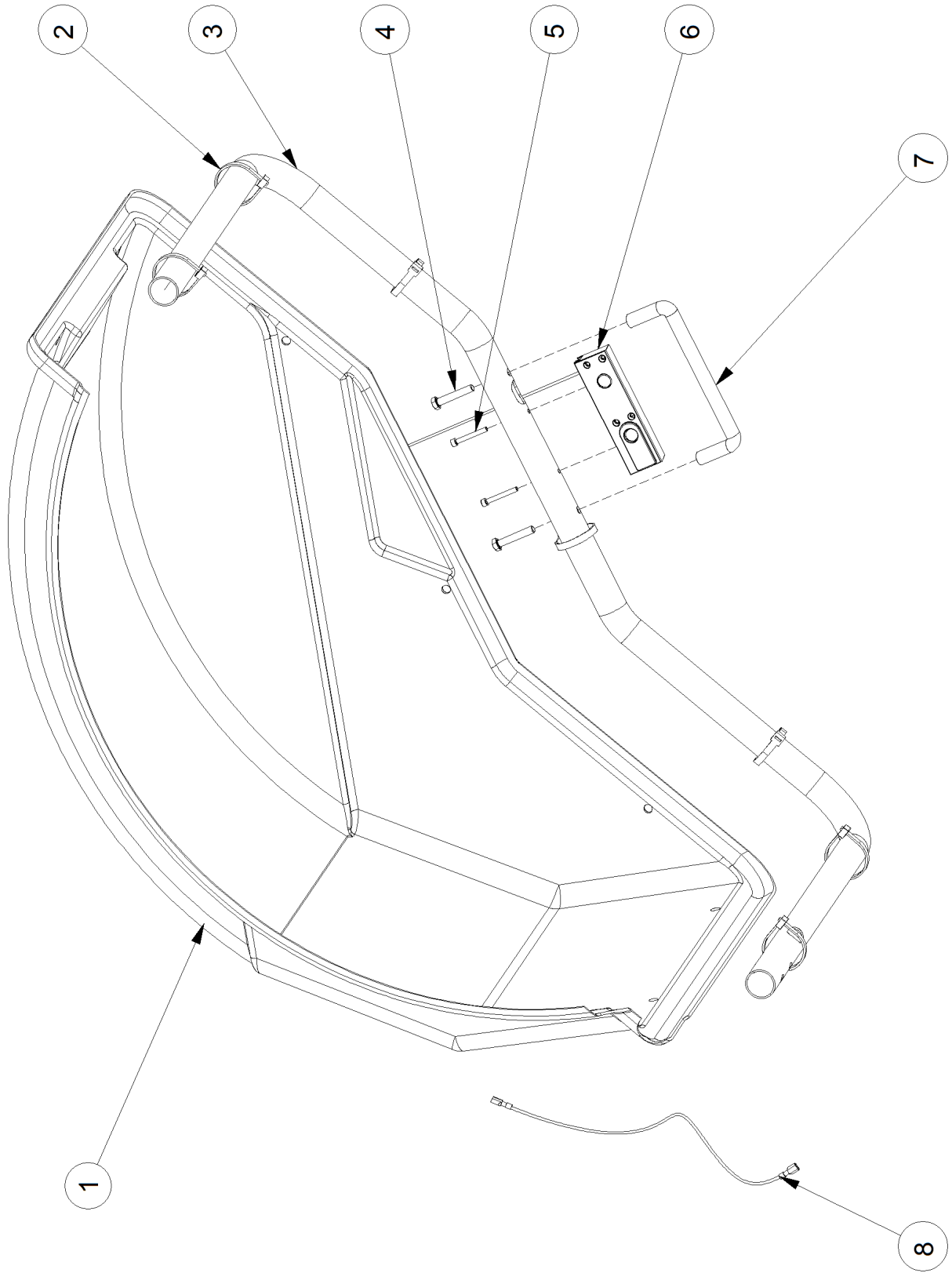
**B** = on request - sur demande - a petición

**C** = suggested - suggéré - sugerido

Pos	Code	Designation	Désignation	Designación	N.	Note	Nota	A	B	C
14	EAW0240G67A	CABLE WITHOUT TEMP. SENSOR	CÂBLE SANS CAPTEUR DE TEMPER.	CABLE SIN SENSOR TEMPERATURA	1			X		X
14	EAW0282G49A	CABLE WITHOUT TEMP. SENSOR	CÂBLE SANS CAPTEUR DE TEMPER.	CABLE SIN SENSOR TEMPERATURA	1	6300-2p		X		X
15	EAA0260D59A	TRANSDUCER	CAPTEUR	TRANSDUCTOR	2			X		X
16	1-17709	SCREW TCEI 8X20 8G	VIS CHc	TORNILLO TCEI	6	M8X100 8K		X		
17	1-16641	Washer plain	Rondelle plate	Arandela plana	4	ISO 4762 D. 6,4		X		
18	1-46701A	HEX HEAD SCREW	VIS H	TORNILLO TE	4	9021 M6X16		X		
19	EAA0307G35A	BRAKE DISC REPAIR KIT	KIT FREIN DE POSITIONNEMENT	KIT FRENO DE POSICIONAMIENTO	1			X		
19	EAA0383G85A	BRAKE DISC REPAIR KIT	KIT FREIN DE POSITIONNEMENT	KIT FRENO DE POSICIONAMIENTO	1	Long wire		X		
20	EAP0201D20A	ENCODER BOARD COMPLETE	CARTE ENCODEUR COMPLETE	TARJETA ENCODER COMPLETE	1			X		X
21	EAA0382G01A	POWER CLAMP FLANGE L	FLASQUE "POWER CLAMP" L	BRIDA "POWER CLAMP" L	1			X		
22	EAA0382G02A	PULL-SHAFT COMPLETE L	AXE COMPLET L	TIRANTE COMPLETO L	1			X		
23	EAA0384G71A	P-CLAMP FLANGE COMPLETE	FLASQUE POWER CLAMP COMPLET	BRIDA P-CLAMP COMPLETE	1			X		
24	EAA0328G16A	TRANSDUCER FIXING UNIT	MOYENS DE FIXATION DU CAPTEUR	GRUPO FIJACIÓN PIEZA	1			X		X
25	EAA0307G37A	BAYONET FITTING	DISPOSITIFS ATTACHE BAÏONNETTE	DISCO DE BAYONETA DE FIJACIÓN	1				X	
26	EAM0051G25A	POWER CLAMP SPACER RING	BAGUE D'ECARTEMENT POWER CLAMP	ANILLO DISTANCIADOR	1	40x17			X	
27	EAK0329G15A	BOARD SUPPORT KIT	KIT SUPPORT CARTE	KIT SOPORTE TARJETA	1				X	

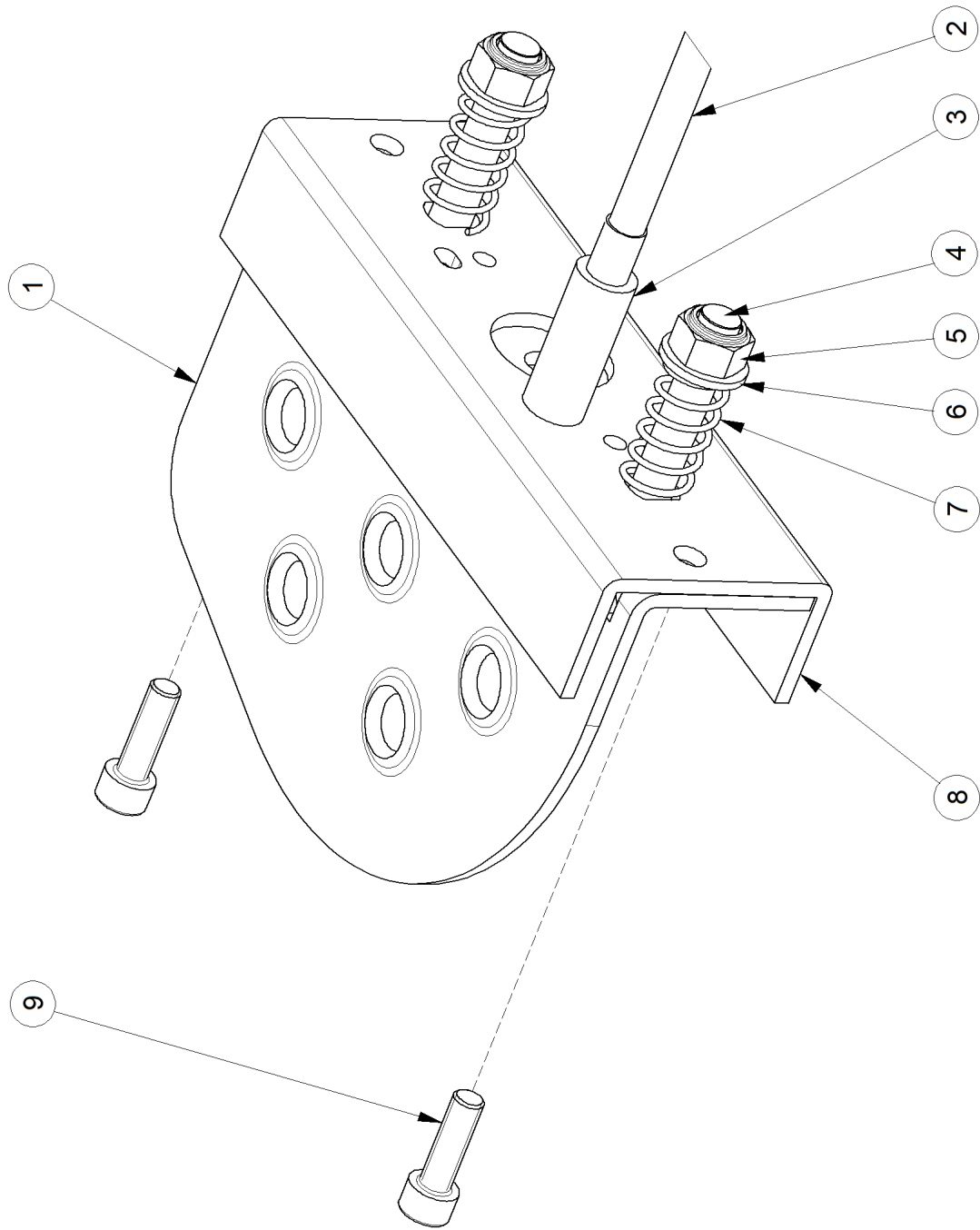


Pos	Code	Designation	Désignation	Designaciòn	N.	Note	Nota	A	B	C
1	EAA0394G93A	LASER POINTER WITH LONG CABLES	POINTEUR LASER CABLES LONGS	PUNTERO LASER CABLES LARGOS	1			X		X
2	EAC0103G31A	LASER POINTER COVER	COUVERCLE POINTEUR LASER	TAPA PUNTERO LASER	1	RAL9005		X		
3	1-22623A	SCREW, PHIL PAN H.TAPP.	VIS AUTOTAR.	TORNILLO AUTORR.	2	D3,9X13 TCB ZB 7981 C		X		
4	EAW0276G28A	LASER POINTER EXTENSION WIRE	CÂBLE RALLONGE LASER POINTEUR	CABLE ALARGADOR PUNTERO LÁSER	1			X		X



Pos	Code	Designation	Désignation	Designación	N.	Note	Nota	A	B	C
1	EAC0100G21A	WHEEL GUARD 42"	PROTECTION ROUE 42"	PROTECCIÓN RUEDA 42"	1	42"		X		
2	5-03345A	CABLE TIE	COLLIER TUBES HUILE	ABRAZADERA TUBOS ACEITE	7	L.350		X		
3	EAM0076G34A	WHEEL GUARD PIPE	TUBE PROTECTION ROUE	TUBO PROTECCIÓN RUEDA	1			X		
4	1-19101A	SCREW, HEXAG.	VIS H	TORNILLO TE	2	M8X45 8.8 BR		X		
5	1-15509	SCREW	VIS CHc	TORNILLO TCEI	2	TCEI 5X40 8G		X		
6	EAA0439G97A	ASSY SONAR FOR PIPE	GROUPE SONAR	GRUPO SONAR	1	DIGITAL VERSION		X		X
6	EAA0440G00A	ASSY SONAR FOR PIPE	GROUPE SONAR	GRUPO SONAR	1	10" TOUCHSCREE VIDEO VERSION		X		X
7	8-09233A	PLASTIC HANDLE	POIGNEE POUR PROT. ROUE	EMPUÑADURA PARA PROT. RUEDA	1			X		
8	EAW0283G76A	SONAR SENSOR EXTENSION CABLE	CÂBLE SENSOR SONAR (EXTENSION)	CABLE SENSOR SONAR (EXTENSION)	1	VIDEO VERSION		X		X
8	EAW0283G81A	SONAR SENSOR IIC EXTENSION CABLE	CÂBLE SENSOR SONAR IIC (EXTENSION)	CABLE SENSOR SONAR IIC (EXTENSION)	1	DIGITAL VERSION		X		X

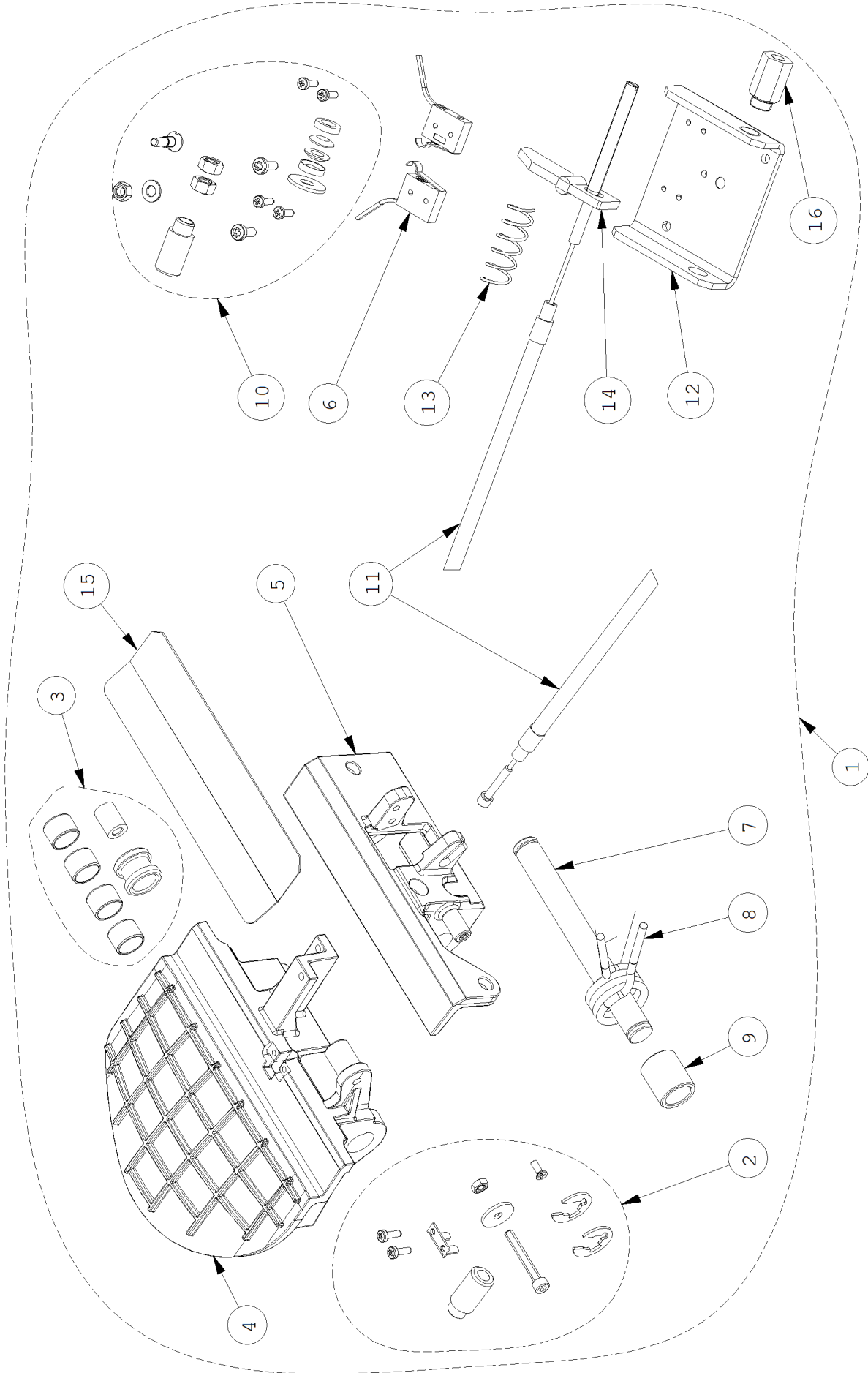
EAZ0088G23A



05/2014

Pos	Code	Designation	Désignation	Designación	N.	Note	Nota	A	B	C
1	EAS2020P20A	Pedal	Pédale	Pedal	1			X		
2	EAA0344G15A	Bowden cable assy	Cable pédale	Cable pedal	1			X		
3	EAM0053G06A	Spacer	Pièce d'écartement	DISTANCIADOR	1			X		
4	1-18209	Screw	Vis	Tornillo	2	M8 x 45	912	X		
5	1-10033	HEX NUT PREVAILING TORQUE M8	ECROU M8 5S	TUERCA M8 5S AUTOBLOQ.BAJO	2			X		
6	1-10041	WASHER D.8	RONDELLE DIAM 8	ARANDELA PLANA D.8 GALVANIZ.	2	D8-UNI6592-69	DIN 125	X		
7	1-06768A	Compression spring	Ressort à pression	MUELLE de presión	2		2098	X		
8	EAS2027G18A	Pedal holder	Support pédale	Soporte pedal	1			X		
9	1-16409	Screw	Vis	Tornillo	2	M6 x 20	912		X	



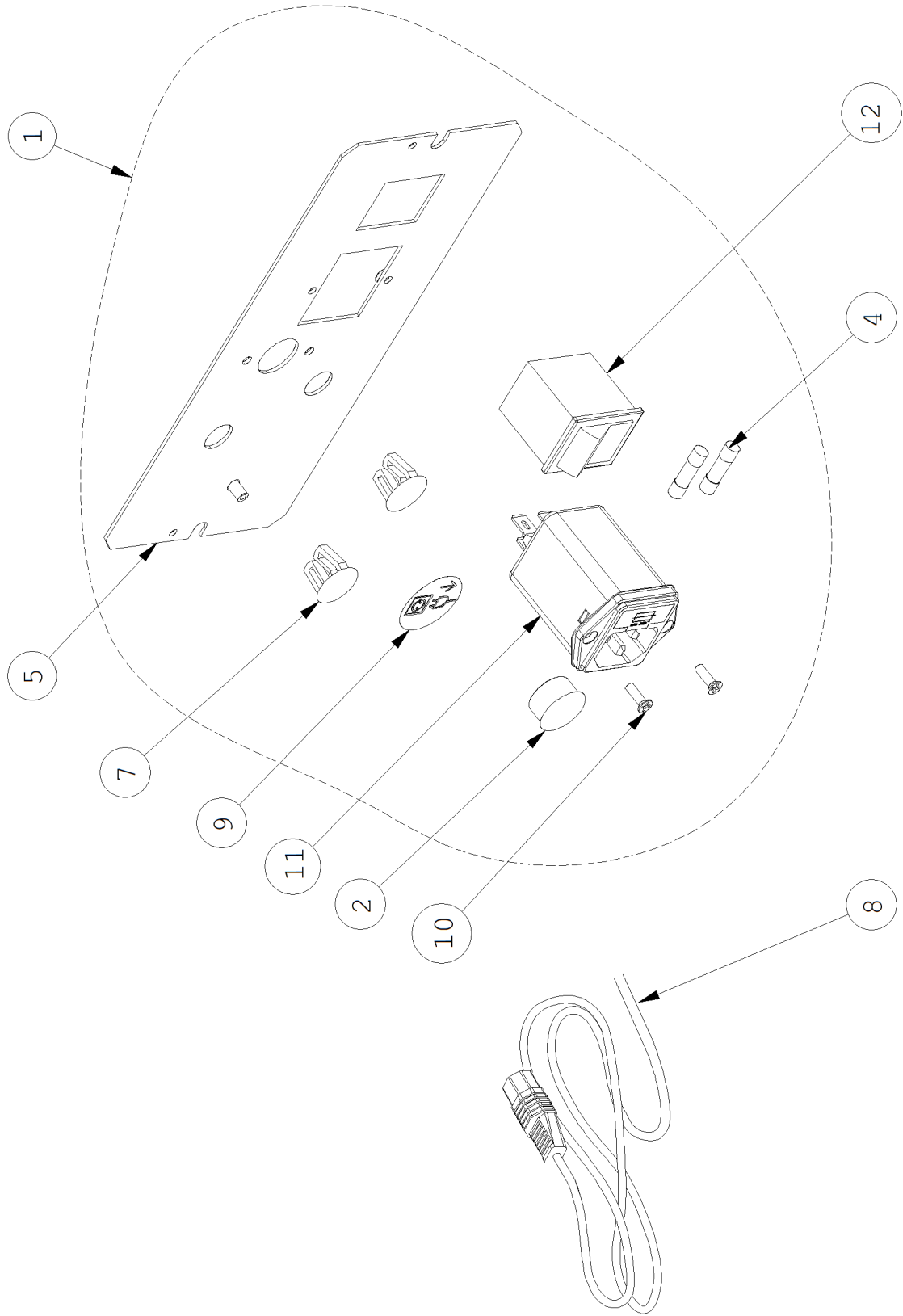


Pos	Code	Designation	Désignation	Designación	N.	Note	Nota	A	B	C
1	EAA0409G98A	ALU BRAKE PEDAL 2 SWITCHES	PEDALE FREIN ALUMINIUM 2 MICRO	PEDAL FRENO ALUMINIO 2 MICRO	1	UL VERSION		X		X
2	EAK0315G94A	SCREWS UL ALU BRAKE PEDAL SET	KIT BOULONNERIE PEDALE FREIN UL	KIT PERNOS PEDAL FRENO UL	1	UL VERSION		X		X
3	EAK0306G92A	BUSHES FOR ALU BRAKE PEDAL SET	KIT DOUILLES PEDALE FREIN EN ALUMINIUM	KIT CASQUILLOS PEDAL FRENO DE ALUMINIC	1			X		
4	EAM0122G48A	MACHINED PEDAL	PEDALE USINÉ	PEDAL TRABALHADO	1				X	
5	EAM0181G72A	BRAKE PEDAL SUPPORT FINISHED	SUPPORT FINI	SOPORTE ACABADO	1				X	
6	2-07661A	MICRO SWITCH	MICRO-RUPTEUR	MICROINTERRUPTOR	2			X		X
7	EAM0046G39A	PEDAL PIN	GOUPILLE DE PÉDALE	PERNO DE ANCLAJE DEL PEDAL	1				X	
8	EAM0048G78A	SPRING, PEDAL SWITCH	RESSORT, PEDAL INTERRUPTEUR	MUELLE PEDAL INTERRUPTOR	1			X		X
9	EAM0051G96A	SPRING BUSHING	DOUILLE DE RESSORT	CASQUILLO DEL MUELLE	1				X	
10	EAK0315G95A	SCREWS FOR ACTUATOR ALU BRAKE PEDAL	KIT BOULONNERIE ACTIONNEUR PEDALE	KIT PERNOS ACTUADOR PEDAL	1				X	
11	EAA0344G15A	Bowden cable assy	Cable pédale	Cable pedal	1			X		
12	EAS2153G49A	MICROSWITCH SUPPORT	SUPPORT MICRO-RUPTEUR	SOPORTE MICROINTERRUPTOR	1			X		
13	1-06768A	Compression spring	Ressort à pression	MUELLE de presión	1	2098		X		
14	EAM0153G24A	ACTUATOR	ACTIONNEUR	ACTUADOR	1				X	
15	EAL0443G72A	PROTECTIVE LABEL	ADHÉSIF PROTECTEUR	ADHESIVO DE PROTECCIÓN	1			X		X
16	EAM0140G21A	THREADED BUSH	DOUILLE FILETEE	CASQUILLO ROSCADO	1			X		

**A** = available - disponible - disponible

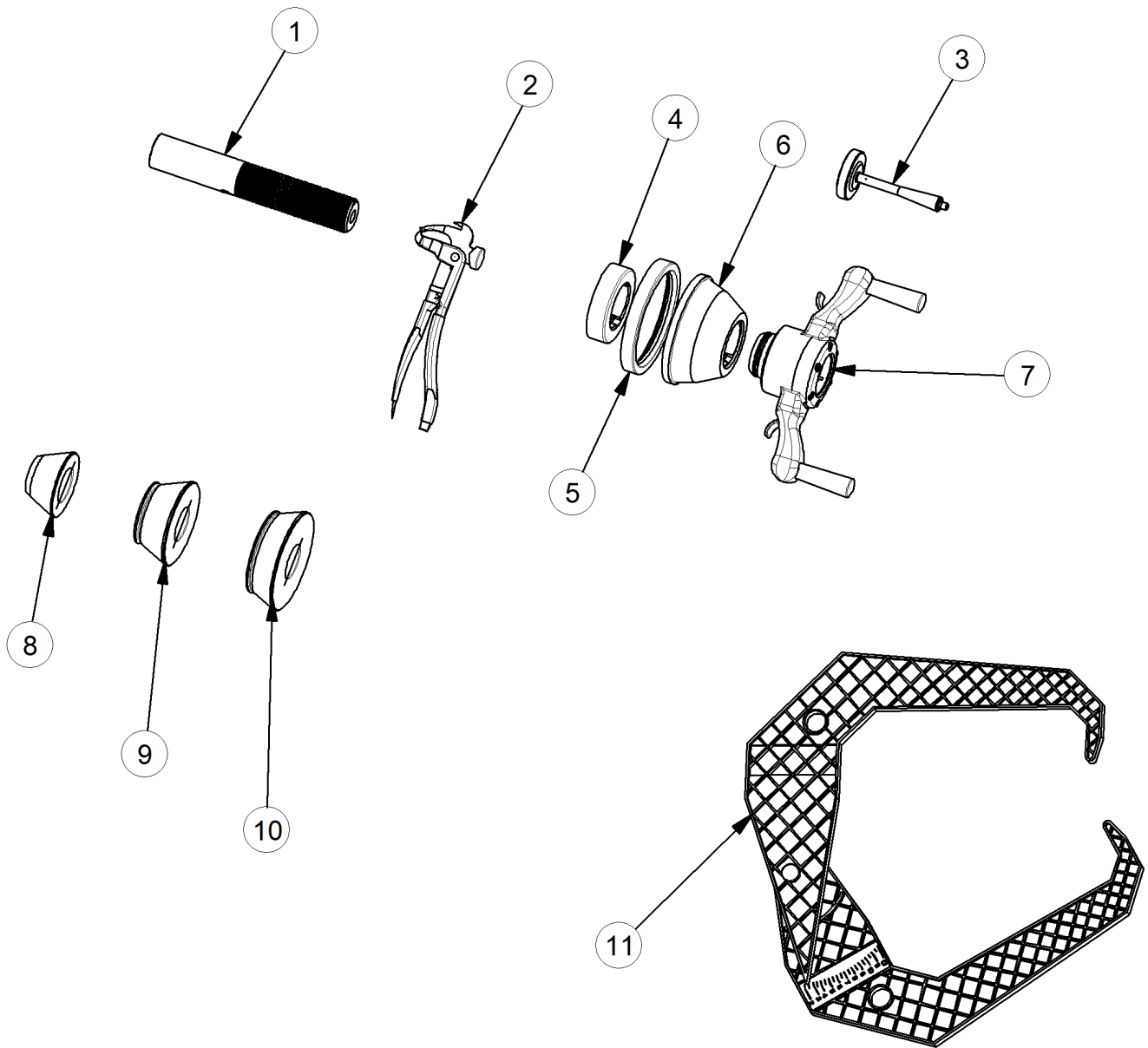
**B** = on request - sur demande - a petición

**C** = suggested - suggéré - sugerido



Pos	Code	Designation	Désignation	Designación	N.	Note	Nota	A	B	C
1	EAA0458G37A	ASSY POWER INLET W/O CAPACITORS	GROUPE ENTRÉE ALIMENTATION SANS COND	GRUPO ENTRADA ALIMENTACIÓN SIN CONDE	1			X		
2	EAC0060G00A	VIBRATORY SYSTEM HOLES CUP	BOUCHON, GROUPE MESURE	TAPON-GRUPO MEDIDAS	1			X		
4	2-21251A	FUSE	FUSIBLE	FUSIBLE	2	6,3A(T) 5x20		X		X
5	EAA0457G53A	POWER INLET SHEETMETAL ASSEMBLY	ENSEMBLE 'TÔLE CONNECTEUR ALIMENTATI	CONJUNTO 'CHAPA CONECTOR ALIMENTACIÓ	1			X		
7	1-08176A	CAP, CLOSING	BOUCHON FERMETURE	TAPÓN DE CIERRE	2			X		
8	EAW0240G14A	POWER SUPPLY CABLE	CABLE SECTEUR	CABLE ELÉCTRICO	1	USA 115V		X		
8	EAW0240G13A	POWER SUPPLY CABLE	CABLE SECTEUR	CABLE ELÉCTRICO	1	UK		X		
8	6-05221A	POWER CORD EUROPEAN	CABLE SECTEUR EUROPE	CABLE ELECTRICO	1	EUROPE PLUG		X		
8	EAX0039J00A	POWER SUPPLY CABLE	CABLE SECTEUR	CABLE ELÉCTRICO	1	JAPAN PLUG		X		
9	8-23662A	LABEL	PLAQUE CONNEXION SECTEUR	PLACA CONEXIÓN DE RED	1				X	
10	1-11103	SCREW	VIS	TORNILLO	2	M3X10 FLAT HEAD		X		
11	2-68948A	FILTERED POWER ENTRY MODULE	MODULE D'ENTRÉE SECTEUR	MÓDULO DE LA ENTRADA DE LA ENERGÍA	1			X		X
12	2-13258A	MAIN SWITCH	COMMUTATEUR	INTERRUPTOR	1			X		

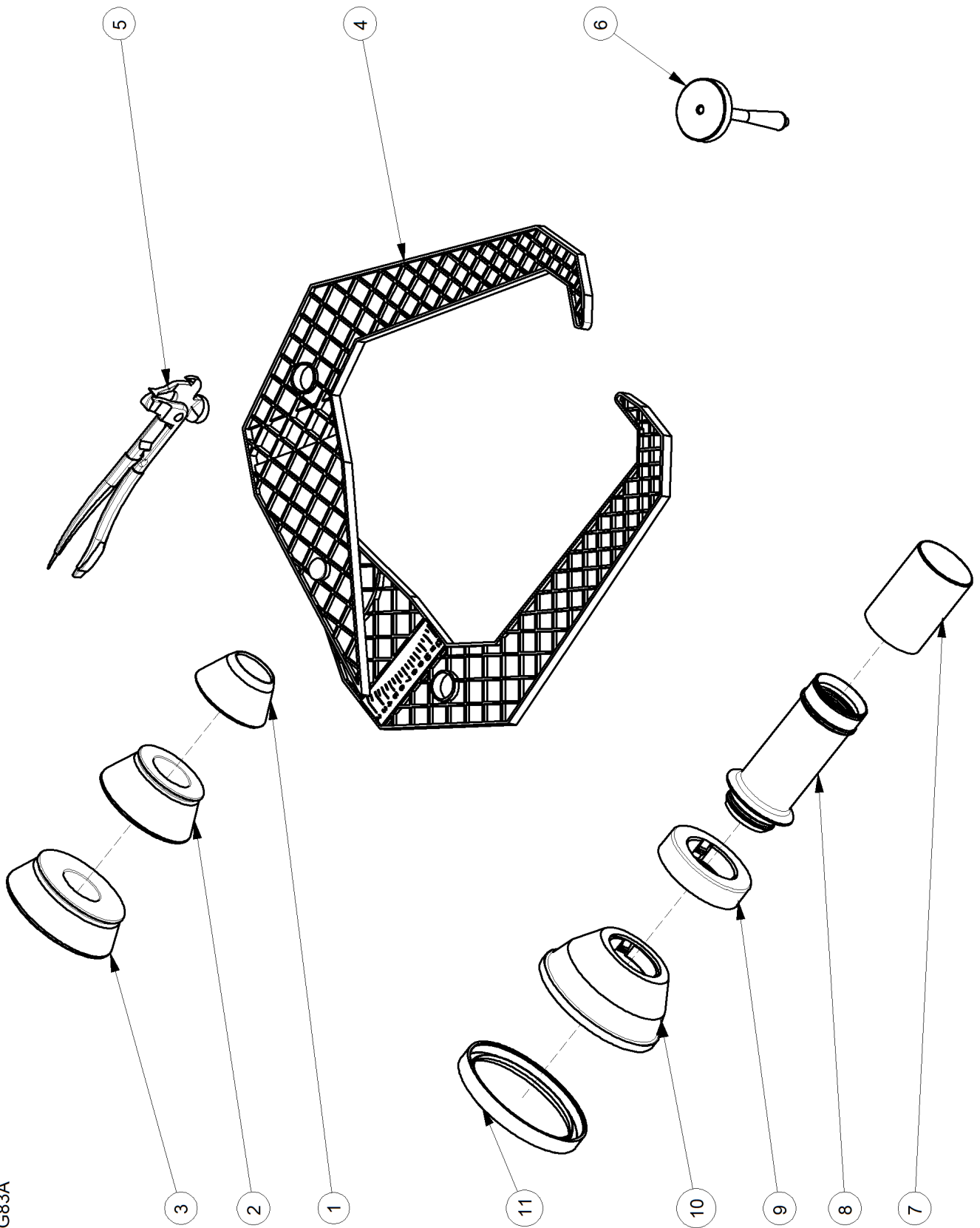
# EAZ0088G16A



04/2014

Pos	Code	Designation	Désignation	Designaciòn	N.	Note	Nota	A	B	C
1	EAM0021D90A	THREADED SHAFT TR40x4	ARBRE FILETE 40x4	ÁRBOL ROSCADO 40X4	1			X		
2	8-04250A	PLIERS, WHEEL WEIGHTS	PINCE POUR MASSES	ALICATES PARA PESOS	1			X		
3	EAM0005D40A	CALIBRATION WEIGHT	MASSE D'ÉTALONNAGE	PESO DE CALIBRACIÓN	1			X		
3	EAM0005D40A	CALIBRATION WEIGHT 2	BRAS ETALON REGLAGE HWT	BRAZO CALIBRE CALIBRADO HWT	1			X		
3	EAM0005D40A	CALIBRATION WEIGHT 2	BRAS ETALON REGLAGE HWT	BRAZO CALIBRE CALIBRADO HWT	1			X		
4	EAC0058D08A	Pressure ring	Bague de serrage	Anillo de empuje	1			X		
5	EAC0058D15A	Protective ring	Bague de protection	Anillo protector	1			X		
5	EAC0058D15A	RUBBER PROTECTION RING	PROTECTION POUR FLASQUE CONIQUE	PROTECCIÓN PARA BRIDA CÓNICA	1					X
6	EAC0058D07A	Clamping head	Tête de serrage	Caja de presión	1			X		
7	EAA0263G66A	QUICKNUT, DIAMETER 40MM	BAGUE RAPIDE D.40	ABRAZADERA RÁPIDA D. 40	1			X		
8	EAM0005D23A	Cone	Cône	Cono	1	N.1 "ECON" D40		X		
9	EAM0005D24A	Cone	Cône	Cono	1	D.48 - 80 mm N.2 "ECON" D40		X		
10	EAM0005D25A	Cone	Cône	Cono	1	D.73 - 94 mm N.4 "ECON" D40		X		
11	EAA0247G21A	CALIPER RIM WIDTH	GROUPE ETALON LARGEUR ROUES	GRUPO CALIBRE ANCHO RUEDAS	1	D.94 - 115 mm B100, Geo 7100		X		

EAZ0070G83A

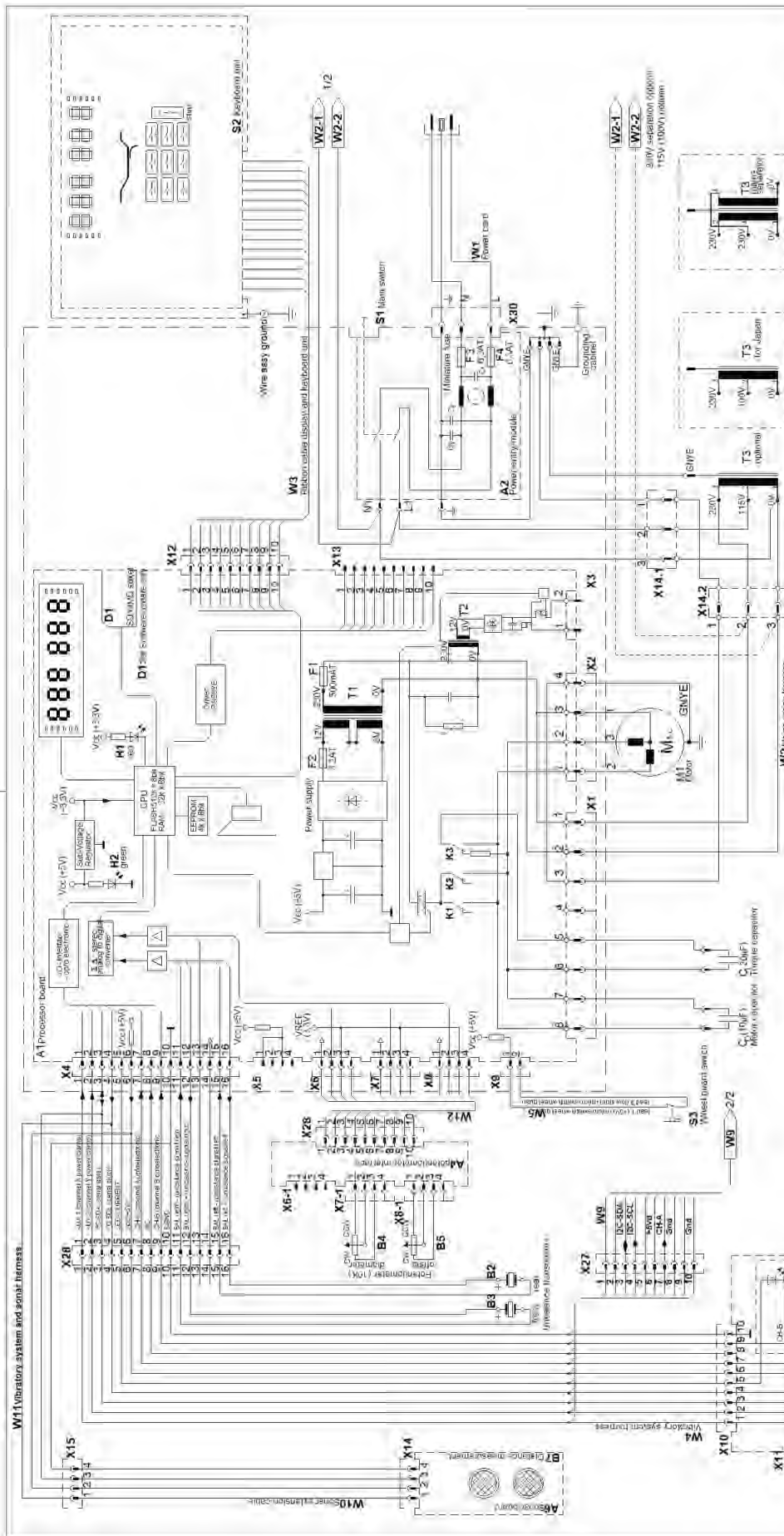


02/2014

Pos	Code	Designation	Désignation	Designaciòn	N.	Note Nota	A	B	C
1	EAM0005D23A	Cone	Cône	Cono	1	N.1 "ECON" D40 D.48 - 80 mm	X		
2	EAM0005D24A	Cone	Cône	Cono	1	N.2 "ECON" D40 D.73 - 94 mm	X		
3	EAM0005D25A	Cone	Cône	Cono	1	N.4 "ECON" D40 D.94 - 115 mm	X		
4	EAA0247G21A	CALIPER RIM WIDTH	GRUPE ETALON LARGEUR ROUES	GRUPO CALIBRE ANCHO RUEDAS	1	B100, Geo 7100	X		
5	8-04250A	PLIERS, WHEEL WEIGHTS	PINCE POUR MASSES	ALICATES PARA PESOS	1		X		
6	EAM0005D40A	CALIBRATION WEIGHT	MASSE D'ÉTALONNAGE	PESO DE CALIBRACIÓN	1		X		
7	EAC0058D69A	Protective sleeve	Douille de protection	Manguito de protección	1		X		
8	EAM0086G86A	Clamping sleeve	Douille de serrage	Manguito de bloqueo	1		X		X
9	EAC0058D08A	Pressure ring	Bague de serrage	Anillo de empuje	1		X		
10	EAC0058D07A	Clamping head	Tête de serrage	Caja de presión	1		X		
11	EAC0058D15A	Protective ring	Bague de protection	Anillo protector	1		X		



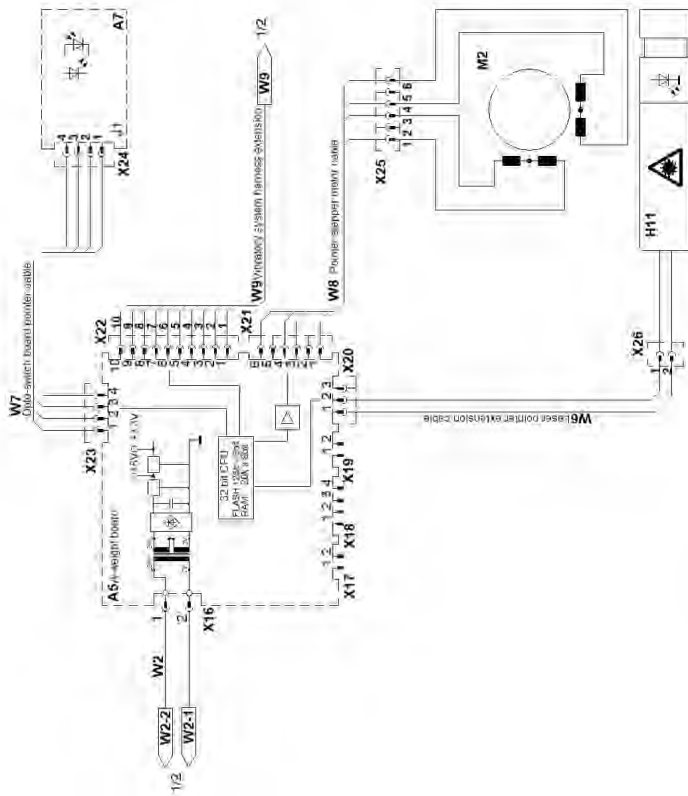




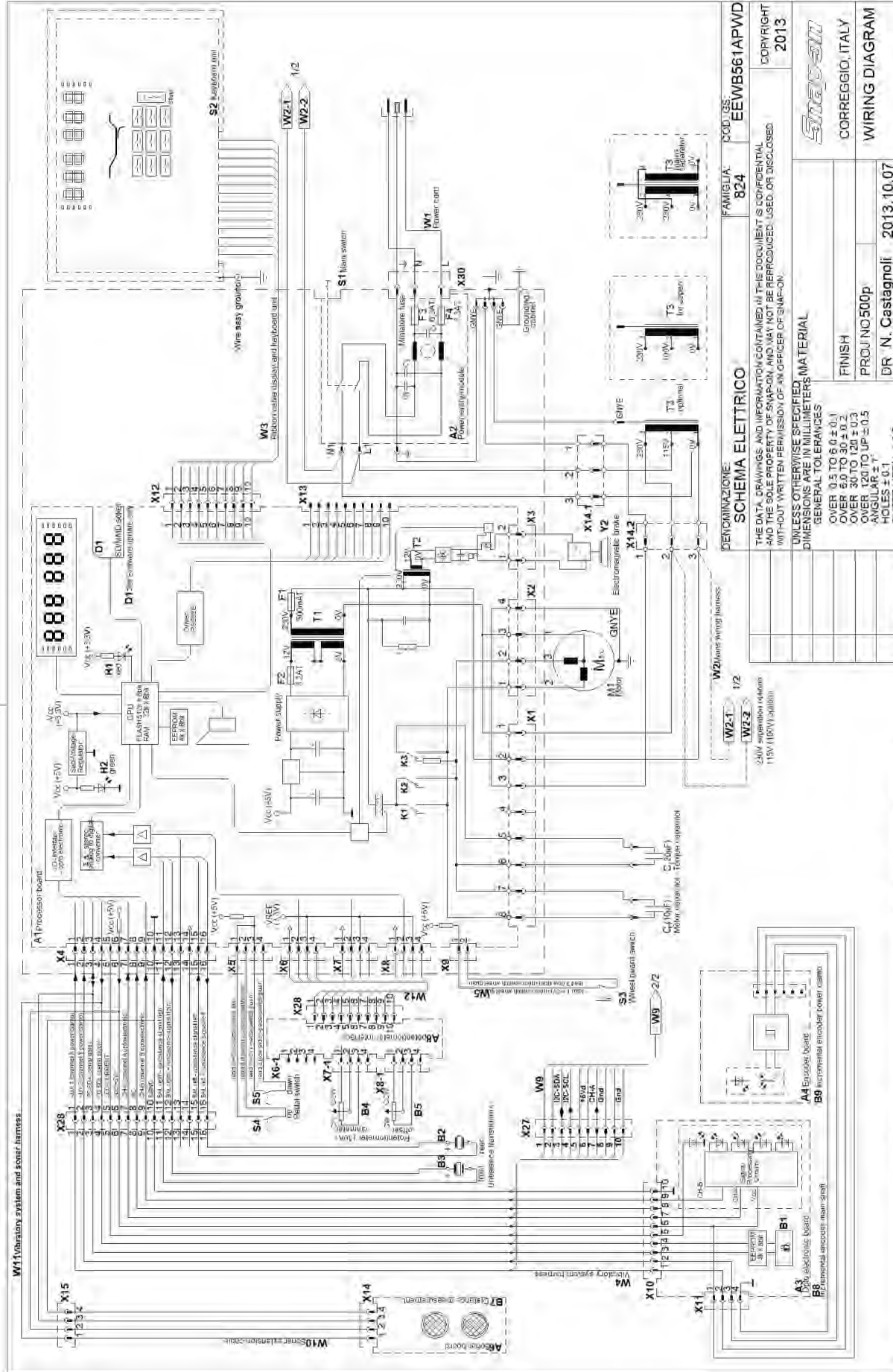
DENOMINAZIONE: <b>SCHEMA ELETTRICO</b>		FAMIGLIA: <b>824</b>	COD. US: <b>EEWB561AWD</b>
THE DATA, DRAWINGS AND INFORMATION CONTAINED IN THIS DOCUMENT IS CONFIDENTIAL AND THE SOLE PROPERTY OF SNAP-ON, AND MAY NOT BE REPRODUCED, USED, OR DISCLOSED WITHOUT WRITTEN PERMISSION OF AN OFFICER OF SNAP-ON.			
UNLESS OTHERWISE SPECIFIED DIMENSIONS ARE IN MILLIMETERS MATERIAL GENERAL TOLERANCES:			
OVER 0.5 TO 6.0 ± 0.1	FINISH	CORREGGIO, ITALY	
OVER 6.0 TO 30 ± 0.2	PROJ NO500	DR N. Castagnoli	
OVER 30 TO 120 ± 0.3	CK	2013.10.07	WIRING DIAGRAM
OVER 120 TO UP ± 0.5	A3	APP	RELEASE
ANGULAR ± 1°	14G0250	14G0212	REV C
HOLES ± 0.1	14G0346	13G0346	REV B
SURFACE ISO 1302	PCN HISTORY	PCN HISTORY	REV A
	QUALITY DOC. N/A	QUALITY DOC. N/A	REV
	SUPERCEDES N/A	SUPERCEDES N/A	REV
	RELEASE	REV C	REV
	EEWB561AWD	EEWB561AWD	REV
	SHEET 1 OF 2	SHEET 1 OF 2	REV

REV	DESCRIPTION	DATE	NAME
C	Fixed potentiometers	2014.10.22N.	Castagnoli
B	Added transformers mains connection for laser pointer	2014.07.28N.	Castagnoli
A	Production release	2013.10.07N.	Castagnoli

- |     |   |     |  |
|-----|---|-----|--|
| A1  | Controller board                                | K1  | Forward run relay                      |
| A2  | Entry module                                    | K2  | Reverse run relay                      |
| A3  | Opto electronic board                           | K3  | Torque capacitor CT relay              |
| A4  | Potentiometers interface board                  | M1  | Motor                                  |
| A5  | A-weight board                                  | M2  | Pointer stepper motor                  |
| A6  | Sonar board                                     | S1  | Main switch                            |
| A7  | On-to-switch board pointer home position        | S2  | Keyboard unit                          |
| B1  | Temperature sensor                              | S3  | Wheel guard switch                     |
| B2  | Piezo rear                                      | T3  | Step-up transformer                    |
| B3  | Piezo front                                     | W1  | Power cord                             |
| B4  | Offset gauges, potentiometer (10K) with cable   | W2  | Mains wiring harness                   |
| B5  | Diameter gauges, potentiometer (10K) with cable | W3  | Ribbon cable display and keyboard unit |
| B7  | Distance measurement                            | W4  | Vibratory system harness               |
| B8  | Incremental encoder main shaft                  | W5  | Wheelguard extension wire              |
| Co  | Motor capacitor 10uF                            | W6  | Laser pointer extension cable          |
| CT  | Torque capacitor 20uF                           | W7  | Opto-switch board pointer cable        |
| D1  | Software update socket                          | W8  | Pointer stepper motor cable            |
| F1  | Miniature fuse 500mA                            | W9  | Vibratory system harness extension     |
| F3  | Miniature fuse 6.3AT                            | W10 | Sonar extension cable                  |
| F4  | Miniature fuse 6.3AT                            | W11 | Vibratory system and sonar harness     |
| H1  | Red LED   | W12 | Potentiometers extension               |
| H2  | Green LED                                       |     |  |
| H11 | Pointer laser module                            |     |  |



DENOMINAZIONE: <b>SCHEMA ELETTRICO</b>		FAMIGLIA: <b>824</b>	COD. GS: <b>EEWB561AWD</b>
<p>THE DATA, DRAWINGS, AND INFORMATION CONTAINED IN THIS DOCUMENT IS CONFIDENTIAL AND THE SOLE PROPERTY OF SNAP-ON, AND MAY NOT BE REPRODUCED, USED, OR DISCLOSED WITHOUT WRITTEN PERMISSION OF AN OFFICER OF SNAP-ON.</p> <p>UNLESS OTHERWISE SPECIFIED DIMENSIONS ARE IN MILLIMETERS MATERIAL GENERAL TOLERANCES</p> <p>COVER 0.5 TO 5.0 ± 0.1 COVER 5.0 TO 30 ± 0.2 COVER 30 TO 120 ± 0.3 COVER 120 TO UP ± 0.5 ANGULAR ± 1° HOLES ± 0.1 SHEET METAL ± 0.5 SURFACE: ISO 1302</p>			
CORREGGIO, ITALY		PROJ NO <b>500</b>	WIRING DIAGRAM
DR N. Castagnoli		2013.10.07	CK
A3	APP	QUALITY DOC	RELEASE
FIRST ANGLE PROJECTION		REV C	
SUPERCEDES		EEWB561AWD	
		SHEET 2 OF 2	



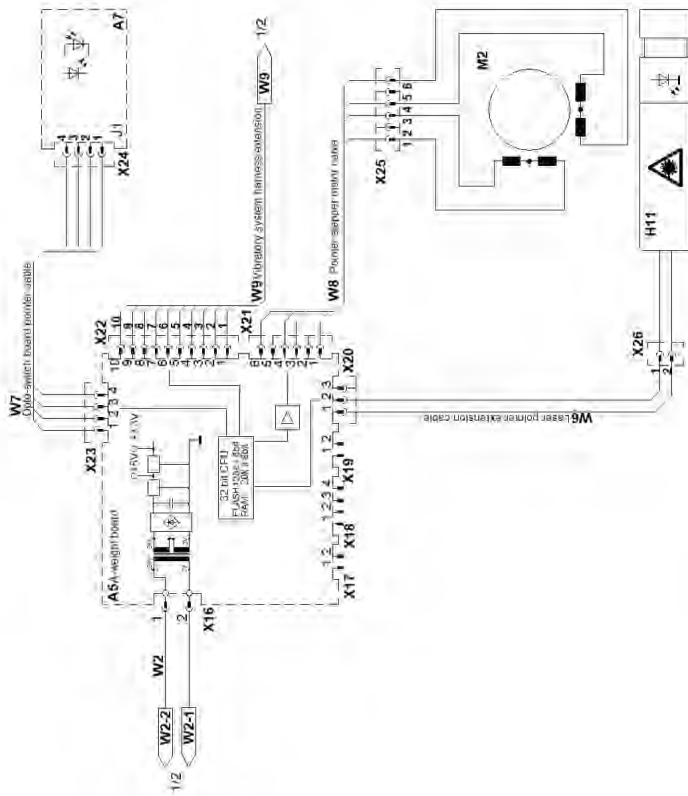
REV	CHANGES	DESCRIPTION	DATE	NAME
C	Fixed potentiometers		2014.10.22 N.	Castagnoli
B	Added transformers mains connection for laser pointer		2014.07.28 N.	Castagnoli
A	Production release		2013.10.07 N.	Castagnoli

REV	CHANGES	DESCRIPTION	DATE	NAME
C	14G0250			
B	14G0212			
A	13G0346			

DENOMINAZIONE: SCHEMA ELETTRICO		FAMIGLIA: 824		COD. USE: EEWB561APWD	
THE DATA, DRAWINGS AND INFORMATION CONTAINED IN THIS DOCUMENT IS CONFIDENTIAL AND THE SOLE PROPERTY OF SNAP-ON, AND MAY NOT BE REPRODUCED, USED, OR DISCLOSED WITHOUT WRITTEN PERMISSION OF AN OFFICER OF SNAP-ON.					
UNLESS OTHERWISE SPECIFIED DIMENSIONS ARE IN MILLIMETERS MATERIAL GENERAL TOLERANCES					
FINISH					
PROJ NO 500p					
DR N. Castagnoli 2013.10.07					
CK					
APP					
QUALITY DOC: N/A					
SUPERCEDES: N/A					
RELEASE					
REV C					
EEMW561APWD					
SHEET 1 OF 2					

DENOMINAZIONE: SCHEMA ELETTRICO		FAMIGLIA: 824		COD. USE: EEWB561APWD	
THE DATA, DRAWINGS AND INFORMATION CONTAINED IN THIS DOCUMENT IS CONFIDENTIAL AND THE SOLE PROPERTY OF SNAP-ON, AND MAY NOT BE REPRODUCED, USED, OR DISCLOSED WITHOUT WRITTEN PERMISSION OF AN OFFICER OF SNAP-ON.					
UNLESS OTHERWISE SPECIFIED DIMENSIONS ARE IN MILLIMETERS MATERIAL GENERAL TOLERANCES					
FINISH					
PROJ NO 500p					
DR N. Castagnoli 2013.10.07					
CK					
APP					
QUALITY DOC: N/A					
SUPERCEDES: N/A					
RELEASE					
REV C					
EEMW561APWD					
SHEET 1 OF 2					

- A1 Controller board
- A2 Entry module
- A3 Opto electronic board
- A4 Encoder board
- A5 A-weight board
- A6 Sonar board
- A7 Opto-switch board pointer home position
- A8 Potentiometers interface board
- B1 Temperature sensor
- B2 Piezo rear
- B3 Piezo front
- B4 Offset gauges, potentiometer (10K) with cable
- B5 Diameter gauges, potentiometer (10K) with cable
- B7 Distance measurement
- B8 Incremental encoder main shaft
- B9 Incremental encoder power clamp
- Co Motor capacitor 40uF
- CT Torque capacitor 20uF
- D1 Software update socket
- F1 Miniature fuse 500mA
- F3 Miniature fuse 6.3AT
- F4 Miniature fuse 6.3AT
- H1 Red LED
- H2 Green LED
- H11 Pointer laser module
- K1 Forward run relay
- K2 Reverse run relay
- K3 Torque capacitor CT relay
- M1 Motor
- M2 Pointer stepper motor
- S1 Main switch
- S2 Keyboard unit
- S3 Wheel guard switch
- S4 Pedal switches
- S5 Pedal switches
- T3 Step-up transformer
- W1 Power cord
- W2 Mains wiring harness
- W3 Ribbon cable display and keyboard unit
- W4 Vibratory system harness
- W5 Wheelguard extension wire
- W6 Laser pointer extension cable
- W7 Opto-switch board pointer cable
- W8 Pointer stepper motor cable
- W9 Vibratory system harness extension
- W10 Sonar extension cable
- W11 Vibratory system and sonar harness
- W12 Potentiometers extension
- Y2 Electromagnetic brake



DENOMINAZIONE: <b>SCHEMA ELETTRICO</b>		FAMIGLIA: <b>824</b>	COD. GS: <b>EEWB561APWD</b>
<p>THE DATA, DRAWINGS, AND INFORMATION CONTAINED IN THIS DOCUMENT IS CONFIDENTIAL AND THE SOLE PROPERTY OF SNAP-ON, AND MAY NOT BE REPRODUCED, USED, OR DISCLOSED WITHOUT WRITTEN PERMISSION OF AN OFFICER OF SNAP-ON.</p> <p>UNLESS OTHERWISE SPECIFIED DIMENSIONS ARE IN MILLIMETERS MATERIAL GENERAL TOLERANCES</p>			
COVER 0.5 TO 50 ±0.1		FINISH	
COVER 5.0 TO 30 ±0.3		CORREGGIO, ITALY	
COVER 30 TO 120 ±0.3		PROJ NO <b>500p</b>	
COVER 120 TO UP ±0.5		DR <b>N. Castagnoli</b>	
ANGULAR ±1°		2013.10.07	
HOLES ±0.1		CK	
SHEET METAL ±0.5		APP	
SURFACE: ISO 1302		QUALITY DOC	
FIRST ANGLE PROJECTION		RELEASE	
A3		REV C	
DW		EEWB561APWD	
SUPERCEDES		SHEET 2 OF 2	





**Notice:** The information contained in this document is subject to change without notice. **Shapron Equipment** makes no warranty with regard to present documentation. **Shapron Equipment** shall not be liable for errors contained herein or for incidental consequential damages, in connection with furnishings, performance, or use of this material.

This document contains proprietary information which is protected by copyright and patents. All rights are reserved. No part of this document may be photocopied, reproduced, or translated without prior written consent of **Shapron Equipment**.

- Manufacturing Facilities -

- **Shapron Equipment Ltd.** - Via Pte. Canal St. - **Stint's Company** for **Leak**
- **Shapron Equipment** - **309 Exchange Avenue** **Company, Arkansas, USA**
- Technical alterations reserved. Refer to the **SA** plates for effective manufacturing location.