

# **JohnBean**

**B1200P**  
**AUTOMATED WHEEL BALANCER**  
**EEWB567AP230**  
**EEWB567AP115**



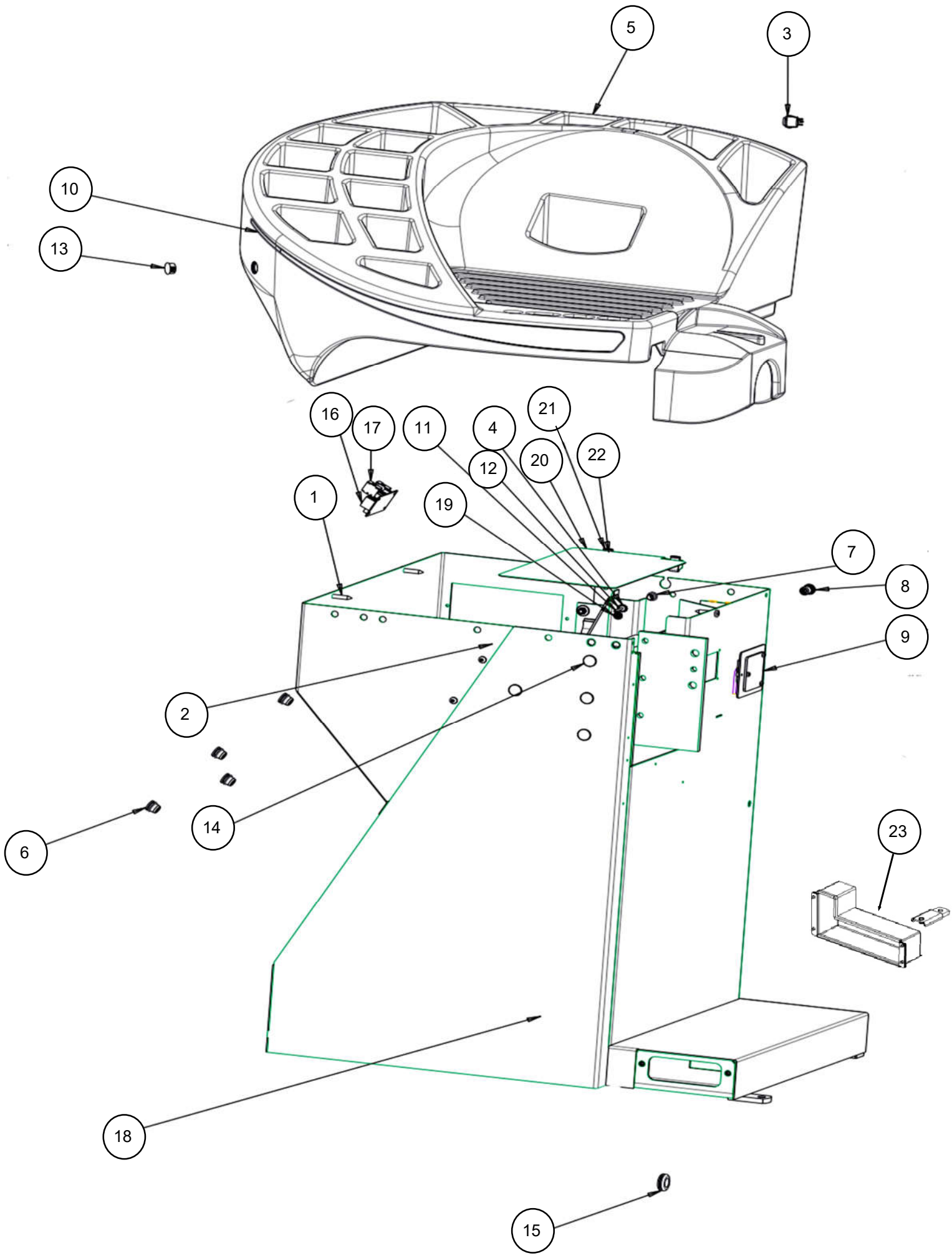
**PARTS MANUAL**

## EEWB567AP 115V BOM

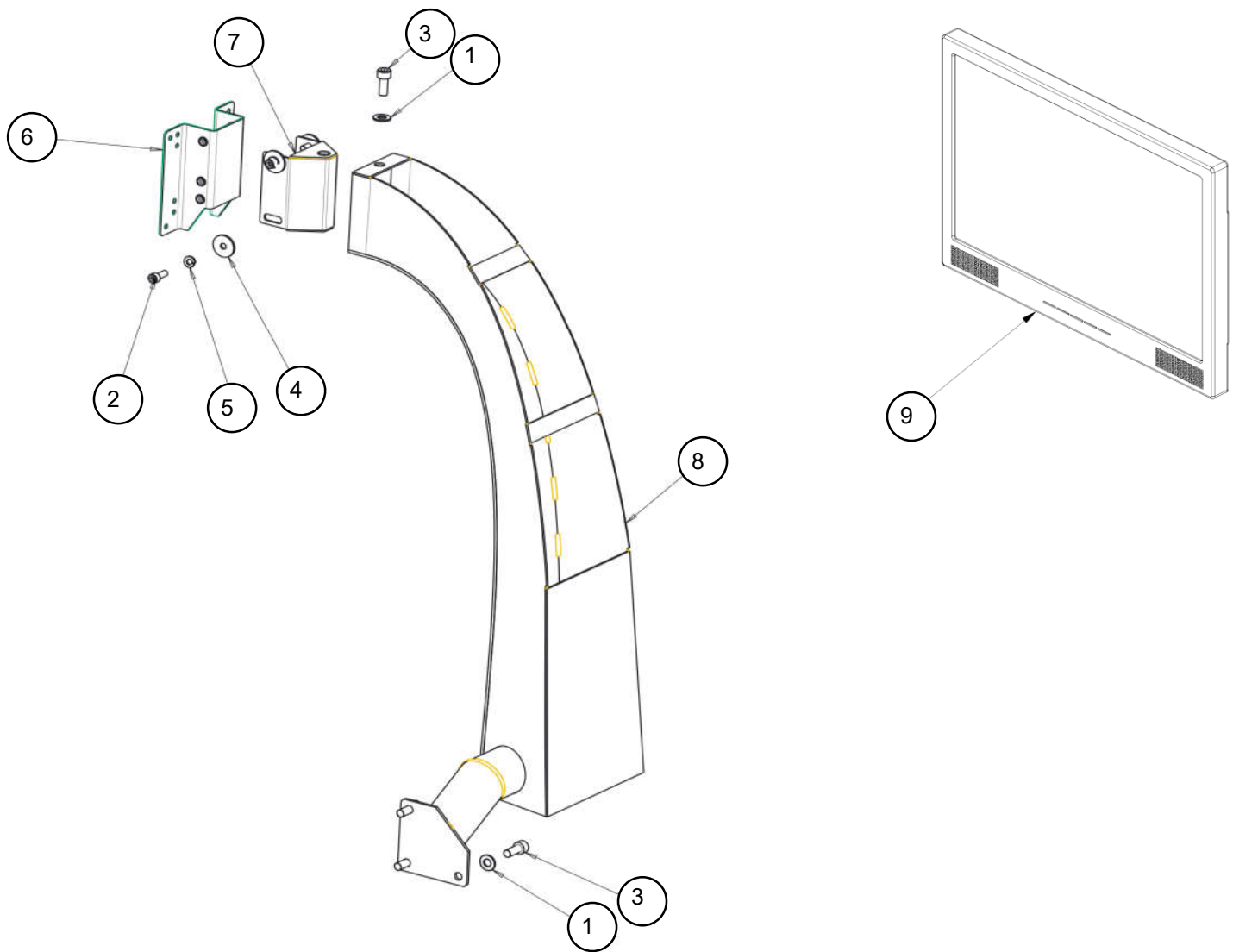
PART NUMBER	DESCRIPTIONS
EAA0423J34A	ASSYB1200P 115V
EAK0309J30A	MONITOR19" W/TOUCHSCREENUL-KIT
EAW0290J26A	CORD-POWER115V
ZEEWB567B9	LITERATURE PACK JOHN BEAN B1200P NA
00089209000	CORD-POWERADAPTER12
EAA0283D11A	ACCYKIT-PWRCLAMP
EAL0420J50A	MODEL DECAL – B1200P
EAK0375G07A	9PC COLLET SET
EAL0341J63A	LABEL-PATENT
EAL0341J56A	LABEL-LASER
EAL0420J33A	LABEL – CAUTIONMAXDIAMETERANDWEIGHT
EAC0105J41A	NAMEPLATE – JOHNBEANTM.
EAL0341J70A	LABEL – LASERAPERTURE
EAL0341J71A	LABEL – CFRCERTIFICATION
EAL0392J89A	LABEL – CUSTSERVJBC
EAL0341J96A	LABEL – BALANCERWARNING,REAR
EAL0341J97A	LABEL – BALANCERWARNING,SIDE
EAL0343J76B	LABEL-ELECTRICAL/SERIAL – BAL AND TC
EAA0423J35A	ASSY -B1200P 230V

## EEWB567AP 230

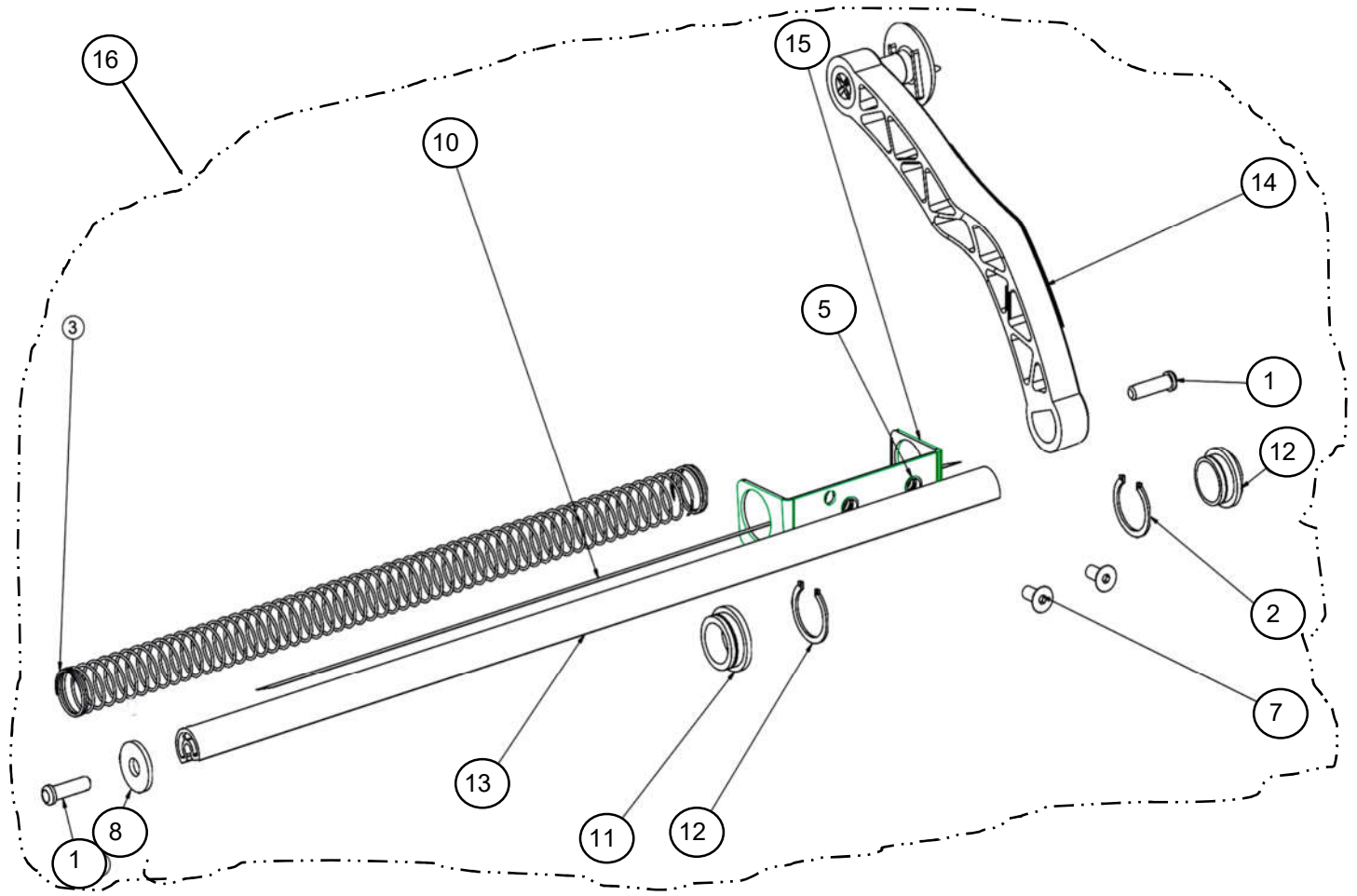
PART NUMBER	DESCRIPTIONS
EAA0423J35A	ASSY -B1200P 230V
EAX0039J01A	CORD POWER, 230V



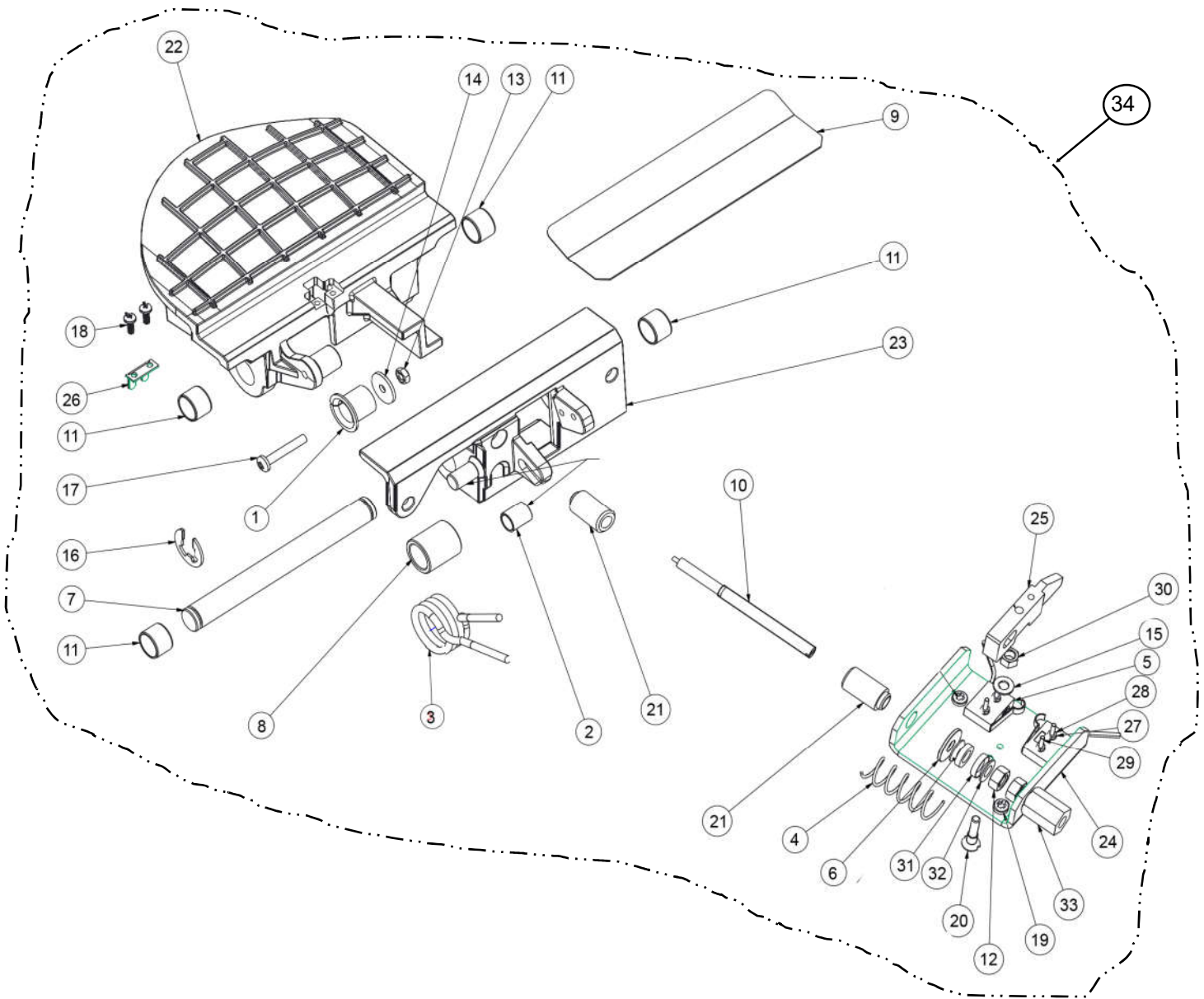
REF#	QTY	PART NUMBER	DESCRIPTION
1	3	1-03725A	SCREW-PH SELF TAP M6.3X32 PHIL
2	1	2-17947A	SOCKET-MULTIPOLE, WAGO
3	1	EAW0283G70A	PUSH-BUTTON WIRE ASSY
4	2	1-1548	WASHER-EXT,SHAKEPROOF 6MM
5	1	EAM0091G89A	WEIGHT TRAY BFH 500
6	4	1-17659A	THREADED INSERT M10X22
7	3	1-18359A	NUTSERT, M8
8	1	1-27259A	M8 X 1.25 NUTSERT LONG GRI
9	1	EAA0393G87A	LED LAMP
10	1	EAC0103G55A	CHROME PLATED REMOVED FROM BOM 10/2021
11	1	1-7558	POP RIVET-3/16"
12	1	2-23201	TERMINAL LUG-6.3MM X .8MM POP RIVET
13	1	1-03776A	DOME PLUG REMOVED FROM BOM 6/2018
14	4	8-7216	PLUG-HOLE, 16MM DIA
15	1	8-08516A	GROMMET-5/8X7/8X1/8 REMOVED FROM BOM 7/2018
16	1	EAP0290G40A	INTERFACE BOARD FOR IBP2
17	2	2-30348	CONNECTOR-MALE
18	1	EAA0423J45A	CABINET ASSY - M2, RED
19	1	8-23762A	LABEL - EARTH SYMBOL
20	1	EAS2128J67A	SHIELD - FIRE
21	2	1-07439A	NUT - SPEED, "U" TYPE,
22	2	1-2509	SCREW-BHCS, 1/4 - 20 X 5/8
23	1	EAA0508G88A	ASSY COVER FOR M CABINET



REF#	QTY	PART NUMBER	DESCRIPTION
1	5	1-10041	WASHER D.8 UNI6592-69/DIN125
2	4	1-16309	SCREW - SHCS, M6 X 16mm,
3	5	1-17709	SCREW - SHCS M8 X 20mm
4	4	1-22941A	WASHER - PLAIN, 6,5 ID, 24 OD X 2mm
5	4	1-2746	WASHER GROVER D.6
6	1	EAA0423J19A	ASSY VESA
7	1	EAS2128J88A	MONITOR SUPPORT BRACKET
8	1	EAS2153G61AC	MONITOR SUPPORT
9	1	EAK0309J30A	MONITOR19" W/TOUCHSCREENUL-KIT
	1	3-08108A	MONITOR 19" TM190IG02 (UL) *
	4	1-54310A	SCREW SET M4X20 FLT 93245A119
	4	1-13533A	NUT BARB M4 (EXT WASHER)
	1	EAL0452J15A	MASK-NAME DECA



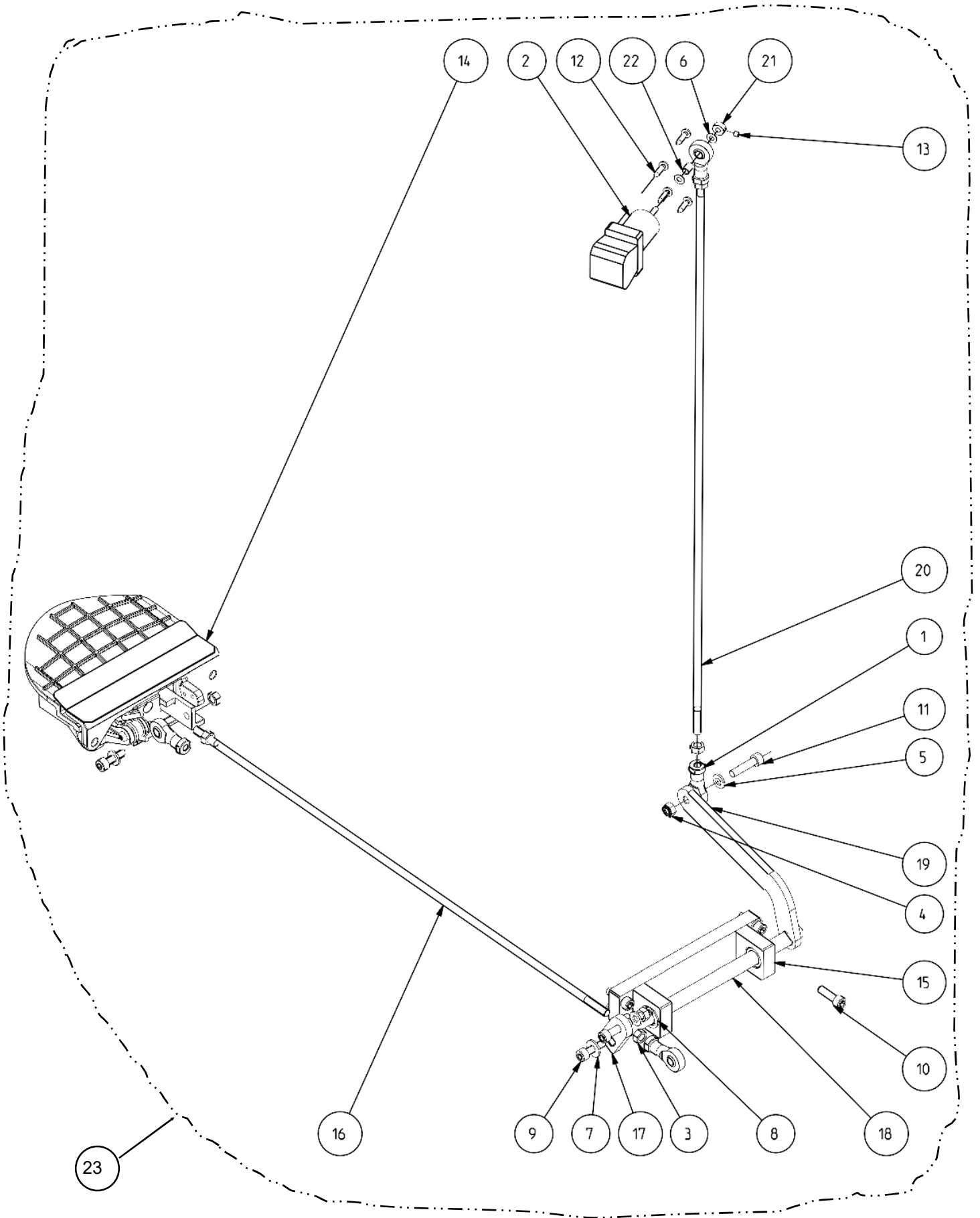
REF#	QTY	PART NUMBER	DESCRIPTION
1	1	1-3824	THREADFORMING SCREW C-M 6 X 12
2	1	1-4577	SNAP RING-25 X 1.20 DIN 471
3	1	1-10468A	SPRING COMP 1.2 X 22.9 X 480
5	1	1-17559A	NUTSERT M-6
7	1	1-27903A	SCREW-M6 X 14 FTHD PHIL
8	1	1-17841	WASHER-ZINC D8 X 24-7021102
10	1	EAL0349G31A	DECAL-DISTANCE SCALE (MM)
11	1	EAM0005D38A	BUSHING-INNER SAPE ROD
12	1	EAM0005D39A	BUSHING-OUTER SAPE ROD
13	1	EAM0053G08A	ROD-SAPE TRUCK
14	1	EAA0307G23A	SAPE ARM EURO NO EJECTOR
N/S	1	EAC0058D11A	DISK TOUCHING
N/S	1	EAC0054P01A	ARM-SAPE EURO (6419214)
N/S	1	1-3624	SCREW, 5 X 40MM, SELF TAP
15	1	EAS2128J18A	SUPPORT-CALIPER ROD
16	1	EAA0423J22A	SAPE B800



Used from 1/2021 "AQ" thru 10/2022 "KR"

REF#	QTY	PART NUMBER	DESCRIPTION
1	2	EAM0181G49A	BUSHING DBLE SHOULDER 12X14X15
2	2	EAM0181G04A	SPACER WITH FLANGE 8.4
3	1	EAM0048G78A	QR SPRNG PDL SWITCH(0016103)
4	1	1-12068A	SPRING COMPRESSION
5	1	2-07661A	MICRO SWITCH-25709 (H4402111)
6	1	1-20041A	WASHER - FLAT M6.4X18X1.6
7	1	EAM0046G39A	PIN PEDAL
8	1	EAM0051G96A	BUSHING CENT SPRING BR-0031787
9	1	EAL0443G72A	PEDAL PROTECTION ADHISIVE
10	1	EAA0344G15A	QR CABLE-BRAKE PEDAL 0032324
11	1	1-10165A	BUSHING SELF TP 1210-P10 34711
12	1	1-11633	NUT M6 X 5, 2MM THK BLK
13	1	1-11433	NUT-M4 HEX DIN 934
14	1	1-22741A	WASHER PLAIN 7021122
15	1	1-36741A	SHIM RING
16	1	1-18477A	RETAINING RING(ST7022039)
17	1	1-26506A	SCREW-PHMS M4 X 25
18	1	1-20504A	SCREW-TCB CROSS 3X7
19	1	1-22623A	SCREW-PH PN H TAP 3.9X13 A2J C
20	1	EAM0153G23A	PIN ACTUATOR POWER CLAMP
21	1	EAM0103G42A	SPACER FOR BRAKE CABLE
22	1	EAM0122G48A	PEDAL MACHINED UL-22305
23	2	EAM0181G72A	SUPPORT BRAKE PEDAL
24	1	EAS2128J78A	MICROSWITCH SUPPORT
25	1	EAM0153G24A	ACTUATOR POWER CLAMP
26	1	EAS2128J75A	CABLE STOP
27	1	1-1048	WASHER-EXT M2 SHAKEPROOF
28	1	1-11033	NUT-M2 HEX
29	1	1-36606A	SCREW-PHIL PAN M2-16
30	1	1-11533A	NUT-M5 HEX BLK
31	1	1-36641A	WASHER SPHERICAL M6 D
32	1	1-36141A	WASHER SPHERICAL M6 C
33	1	EAM0140G21A	BUSHING THREADED
34	1	EAA0409G98AC	ALU BRAKE PEDAL 2 SWT UL VER

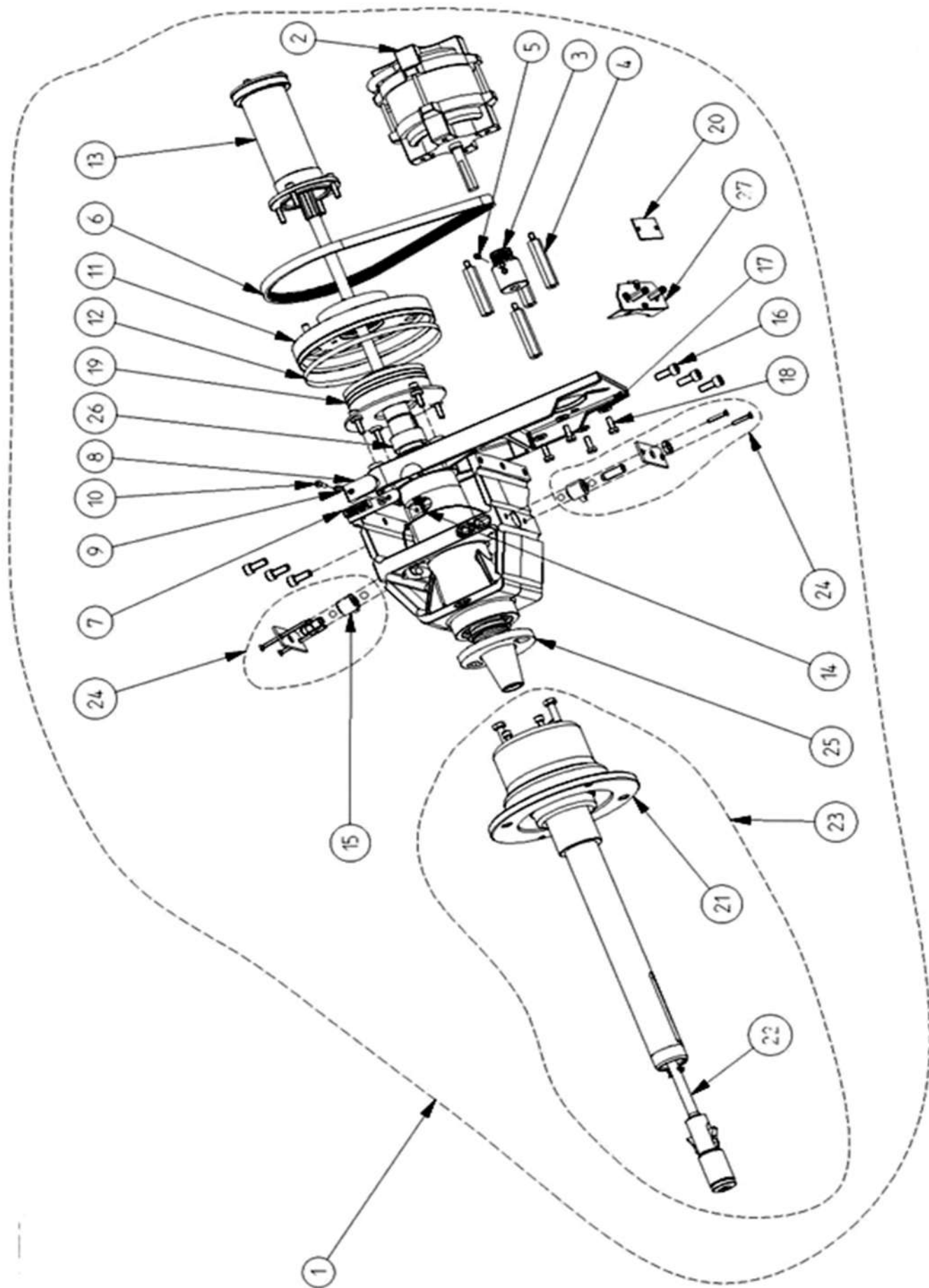




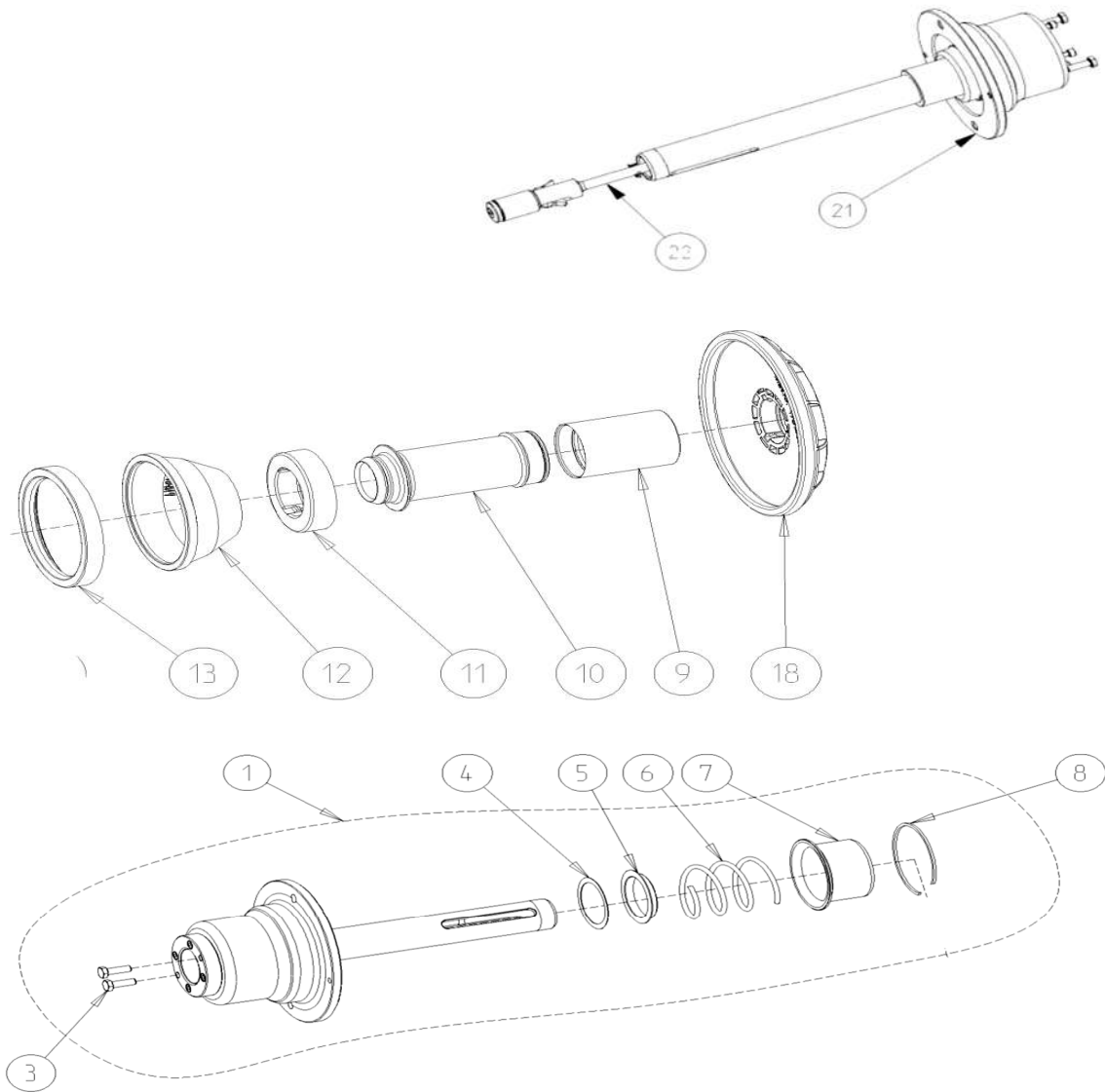
Used from 10/2022 "KR" to Present

REF#	QTY	PART NUMBER	DESCRIPTION
1	1	1-11963A	ROD END SELF LUBRICATING
2	1	2-13658A	JOYSTICK, 2 POSITIONS, 48MM SH
3	1	1-11633A	NUT-M6 X 5.2 BLK
4	1	1-9933	NUT-M6 ZINC 7020339
5	1	1-9841	WASHER-PLAIN 6MM/SAME AS4-6641
6	1	1-9641	WASHER PLAIN -7021232/1641040
7	1	1-16641	WASHER-FLAT M6
8	1	1-18477A	RETAINING RING(ST7022039)
9	1	1-16409	ALLEN SCREW, M6 X 20
10	1	1-16409A	SCREW TCEI 6 X 20 8G
11	1	1-16509A1	SCREW - ALLEN 6X25 8G
12	1	1-18023A	SELF TAPPING M4.2X16 PNH
13	1	1-38610	SCREW-SET M4 X 7MM X 4MM CP PT
14	1	EAA0503G89A	ALU BRAKE PDEAL UL VERSION
	1	EAM0048G78A	QR SPRNG PDL SWITCH(0016103)
	1	EAM0046G39A	PIN PEDAL
	1	EAM0051G96A	BUSHING CENT SPRINGBR-0031787
	4	1-10165A	BUSHING SELF TP 1210-P10 34711
	1	1-11433	NUT-M4 HEX DIN 934
	1	1-22741A	WASHER PLAIN 7021122
	2	1-18477A	RETAINING RING(ST7022039)
	1	1-26506A	SCREW-PHMS M4 X 25
	1	1-20203A	SCREW M3 X 8 FLAT HEAD
	1	EAL0443G72A	PEDAL PROTECTION ADHISIVE
	1	EAM0180G23A	PEDAL MACHINED UL
	1	EAM0181G04A	SPACER WITH FLANGE 8.4
	1	EAM0181G44A	SUPPORT BRAKE PEDAL FINISHED
	1	EAM0181G49A	BUSHING DBLE SHOULDER 12X14X15

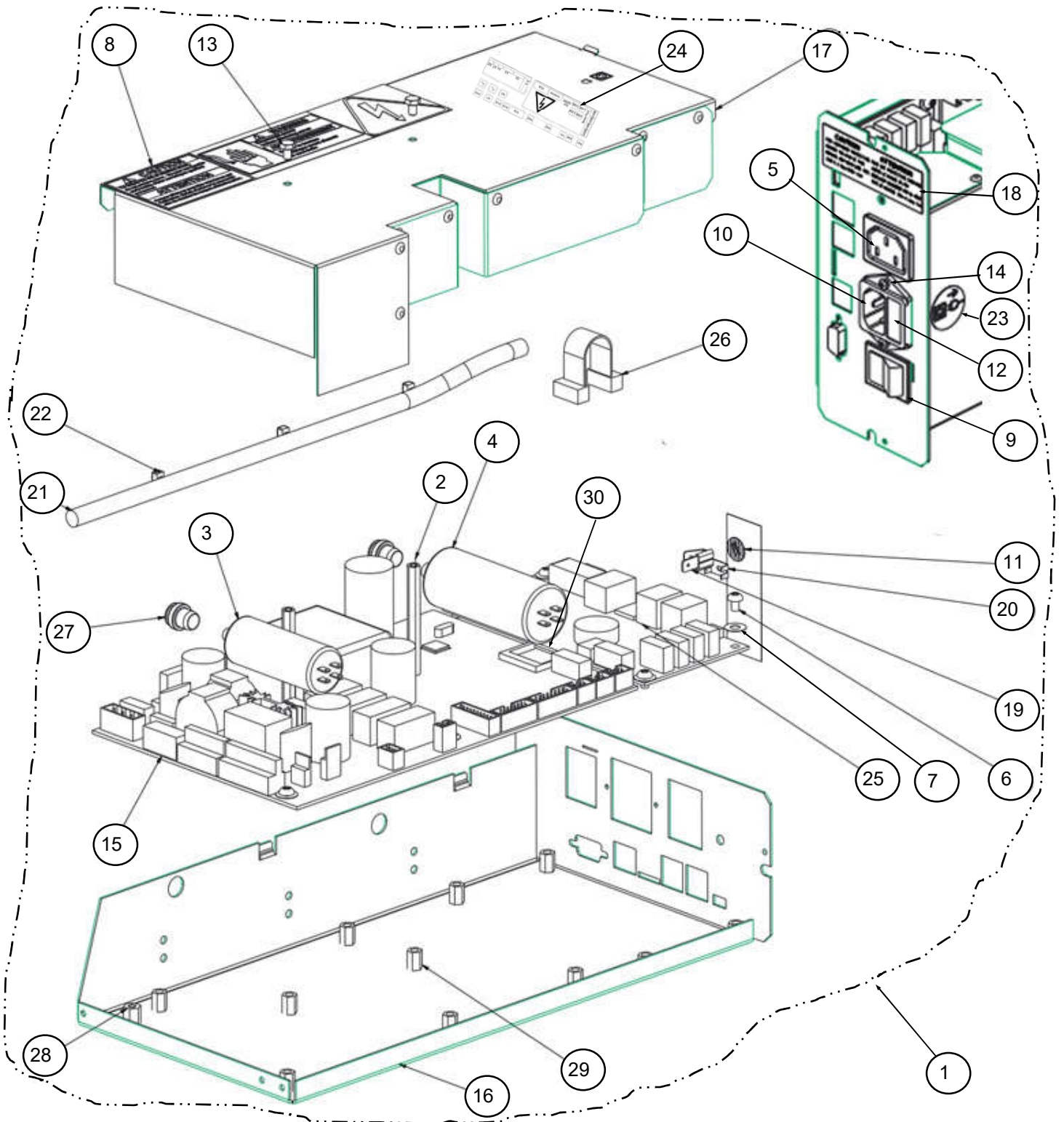
REF#	QTY	PART NUMBER	DESCRIPTION
15	1	EAA0508G23B	SHAFT SUPPORT ASSY
	2	1-17365A	BUSHING BRONZE DIN 1850
	2	1-22052A	PIN-DOWEL (3 X 16 MM)7040219
	4	1-23603A	SCREW M6 X 20 COUNTERSINK
	2	EAM0209G70A	SHAFT SUPPORT
	1	EAM0209G71A	BASE SHAFT SUPPORT
16	1	EAM0179G21B	BAR PULLING LOW M CABINET
17	1	EAM0179G23B	PLATE SMALL LINKAGE
18	1	EAM0179G24A	BEARING SHAFT
19	1	EAM0179G25B	PLATE BIG LINKAGE
20	1	EAM0179G26B	BAR PULLING UPPER M CABINET
21	1	EAM0180G22B	CONNECTION JOYSTICK
22	1	EAM0181G82A	BUSHING JOYSTICK
23	1	EAA0503G90B	UL BRAKE PEDAL FOR M CABINET



REF#	QTY	PART NUMBER	DESCRIPTION
1	1	EAA0392G39A	ALU UL MEASUREMENT UNIT
2	1	2-59366A	UL MOTOR INCL. CONNECTOR Y2K
3	1	EAM0005D08A	MOTOR PULLEY
4	4	EAM0061G82A	UNIT MOTOR SPACER
5	1	1-28410	SCREW
6	1	8-3531	BELT 5PJ711
7	1	EAA0344G00A	OPTO-ELECTRONIC UNIT
8	1	EAC0094G11A	ENCODER BOARD PROTECTION
9	1	1-9641	WASHER
10	1	1-35006A	SCREW
11	1	EAM0021D18A	MOTOR PULLEY
12	1	EAM0005D64A	ENCODER BAR CODE
13	1	EAA0307G36A	REPLACEMENT KIT "P"
14	1	EAW0240G67A	CABLE WITHOUT TEMP. SENSOR
15	2	EAA0260D59A	TRANSDUCER
16	6	1-17709	SCREW TCEI 8X20 8G
17	4	1-16641	WASHER PLAIN
18	4	1-46701A	HEX HEAD SCREW
19	1	EAA0383G85A	BRAKE DISC REPAIR KIT
20	1	EAP0201D20A	ENCODER BOARD COMPLETE
21	1	EAA0382G01A	POWER CLAMP FLANGE L
22	1	EAA0382G02A	PULL-SHAFT COMPLETE L
23	1	EAA0384G71A	P-CLAMP FLANGE COMPLETE
24	1	EAA0328G16A	TRANSDUCER FIXING UNIT
		8-1144	STEEL BALL 8 M
		1-6568	COMPRESSION SPRING 1.6 X 10 X 58.5
		EAM0005D07A	SETSCREW HEX SOCKET M10X1X29
		1-04634A	NUT HEX LOW M10X1 8-A2J ISO 8675 EN 28675
		1-17403	SCREW HEX SOCKET COUNT.H M4X25 8.8-A2J
		1-19903A	SCREW HEX SOCKET COUNT.H M4X65 8.8-A2J
		1-11833	HEXAGON NUT B M10 X 1 -8-A2J
25	1	EAA0307G37A	BAYONET FITTING
26	1	EAM0051G25A	POWER CLAMP SPACER RING
27	1	EAK0329G15A	BOARD SUPPORT KIT

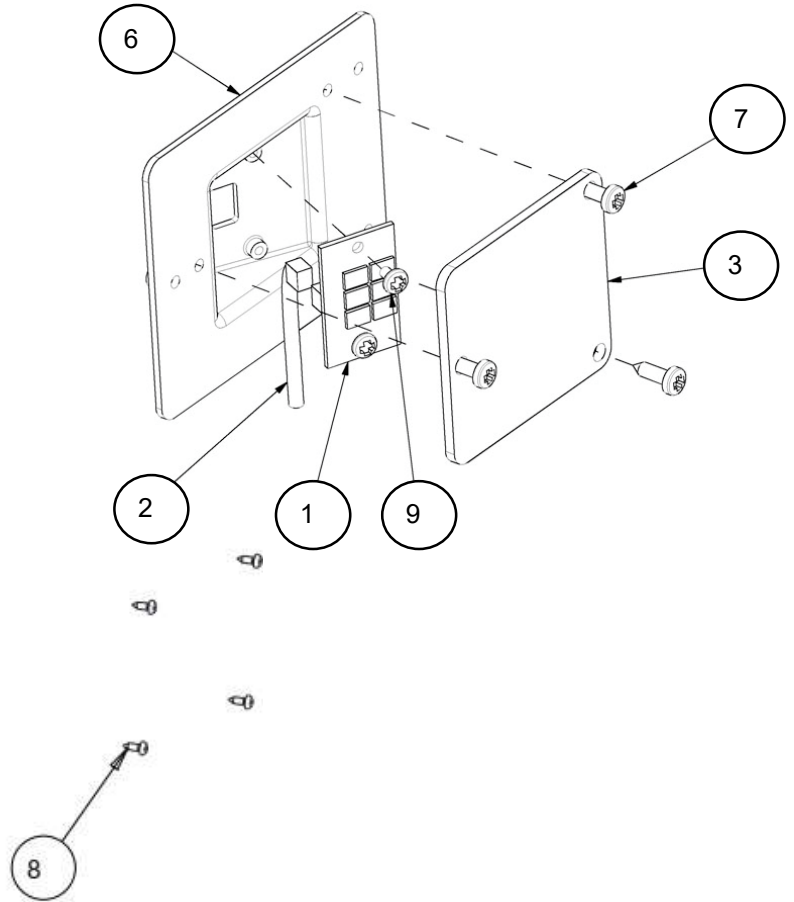
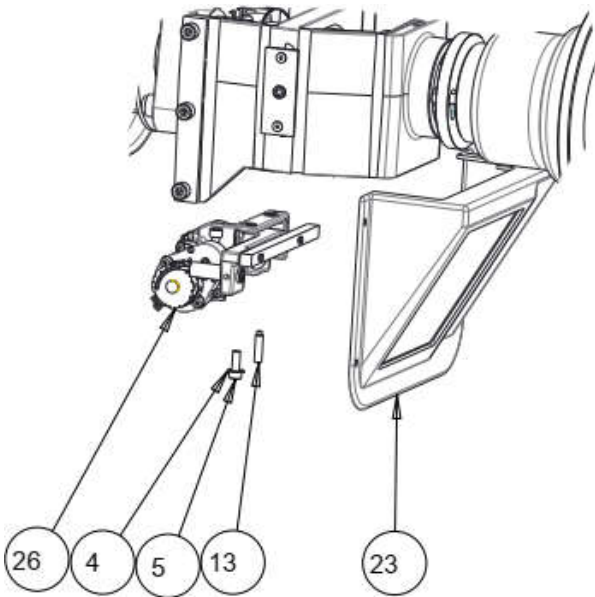


REF#	QTY	PART NUMBER	DESCRIPTION
1	1	EAA0384G71A	P-CLAMP FLANGE COMPLETE
3	2	1-32701A1	SCREW M8X25
4	1	1-18241A	WASHER
5	1	EAC0058D14A	SPRING CENTERING RING
6	1	1-07768A	COMPRESSION SPRING
7	1	EAS2025D14A	SPRING GUIDE
8	1	1-13077	CIRCLIP
9	1	EAC0058D69A	PROTECTIVE SLEEVE
10	1	EAM0086G86A	CLAMPING SLEEVE
11	1	EAC0058D08A	PRESSURE RING
12	1	EAC0058D07A	CLAMPING HEAD
13	1	EAC0058D15A	PROTECTIVE RING
18	1	EAA0307G82A	OPTIONAL 8" CLAMPING PLATE
21	1	EAA0382G01A	FLANGE FOR POWER CLAMP
22	1	EAA0382G02A	PULL-SHAFT COMPLETE

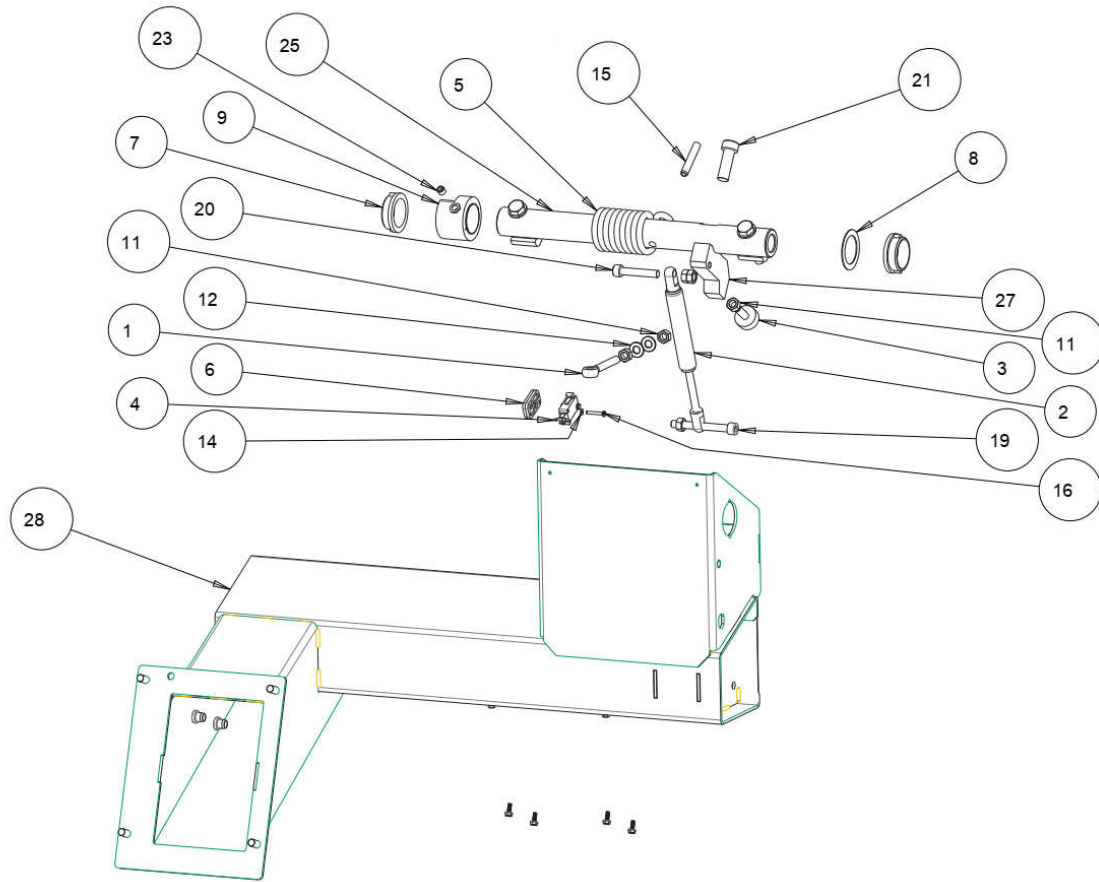


SYM	REQD	PART NO	DESCRIPTION
1	1	EAA0509G60AC	EBOX+ EPC w/Software installed
2	2	1-16561A	SPACER M4x60
3	1	2-01429A	CAPACITOR - 10uF, 400V
4	1	2-01529A	CAPACITOR - 20uF, 400V
5	1	2-63348A	CONNECTOR AC OUTLET
6	9	1-19804	SCREW, PHIL PAN HEAD M4x6 *
7	9	1-5547	WASHER-LOCK, EXT, M4
8	1	EAL0341J98A	LABEL-BALANCER WARNINGS, EBOX
9	1	2-13258A	MAIN SWITCH
10	1	2-64948A	ENTRY POWER MODULE
11	1	8-23762A	LABEL - EARTH SYMBOL
12	2	2-21251A	FUSE-TIME DELAY, 250V, 6.3 AMP
13	2	1-27101A	SCREW HEX HEAD MACHINED
14	2	1-23223A	SCREW-PHMS,M2.9 X 1 X 13MM,TYPE B
15	1	EAP0290G00A	MOTORIZED INTEGRATED
16	1	EAA0423J18A	ASSY FRAME FOR IBP + EPC
17	1	EAS2128J94A	ASSY COVER
18	1	EAL0349G44A	FUSES CAUTION
19	1	2-31001A	TERMINAL - QUICK CONNECT
20	1	2-23201	TERMINAL LUG-6.3MM X .8MM POP RIVET
21	1	EAW0282G97A	MAIN CORD
22	3	5-845	CABLE TIE PLASTIC
23	1	8-23662A	LABEL
24	1	EAL0425G47A	IBP2 BOX LABELS
25	1	EAP0276G60A	EPC BOARD
26	1	EAW0283G15A	IMX EPC POWER SUPPLY
27	2	1-18359A	THREADED INSERT M8x1,25
28	1	1-14561A	INSULATING SPACER M4x10
29	11	1-7861	M4 STANDOFF 10mm
30	1	3-99426AF1	MICRO SD CARD IMX535 FLAT GUI

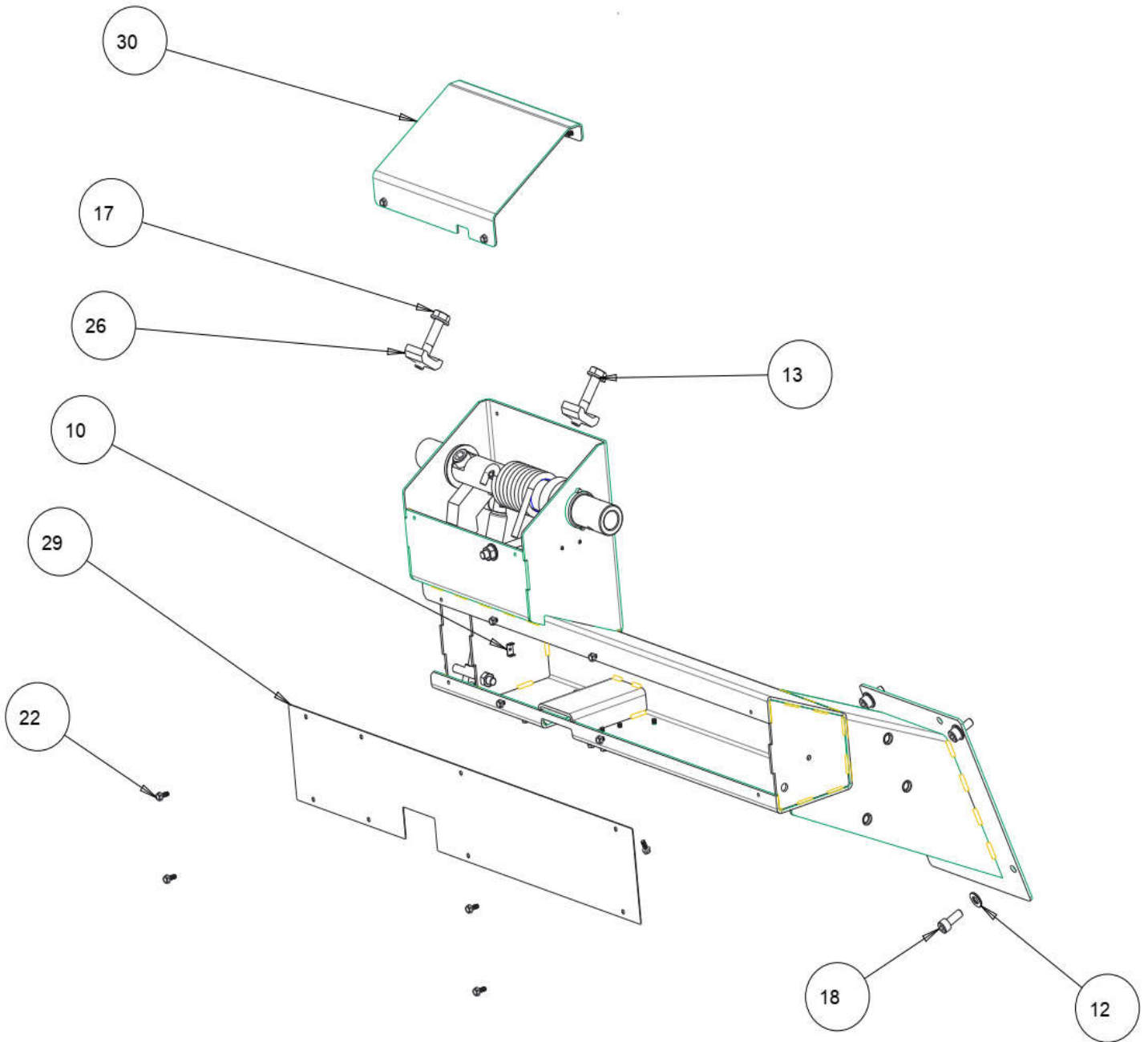




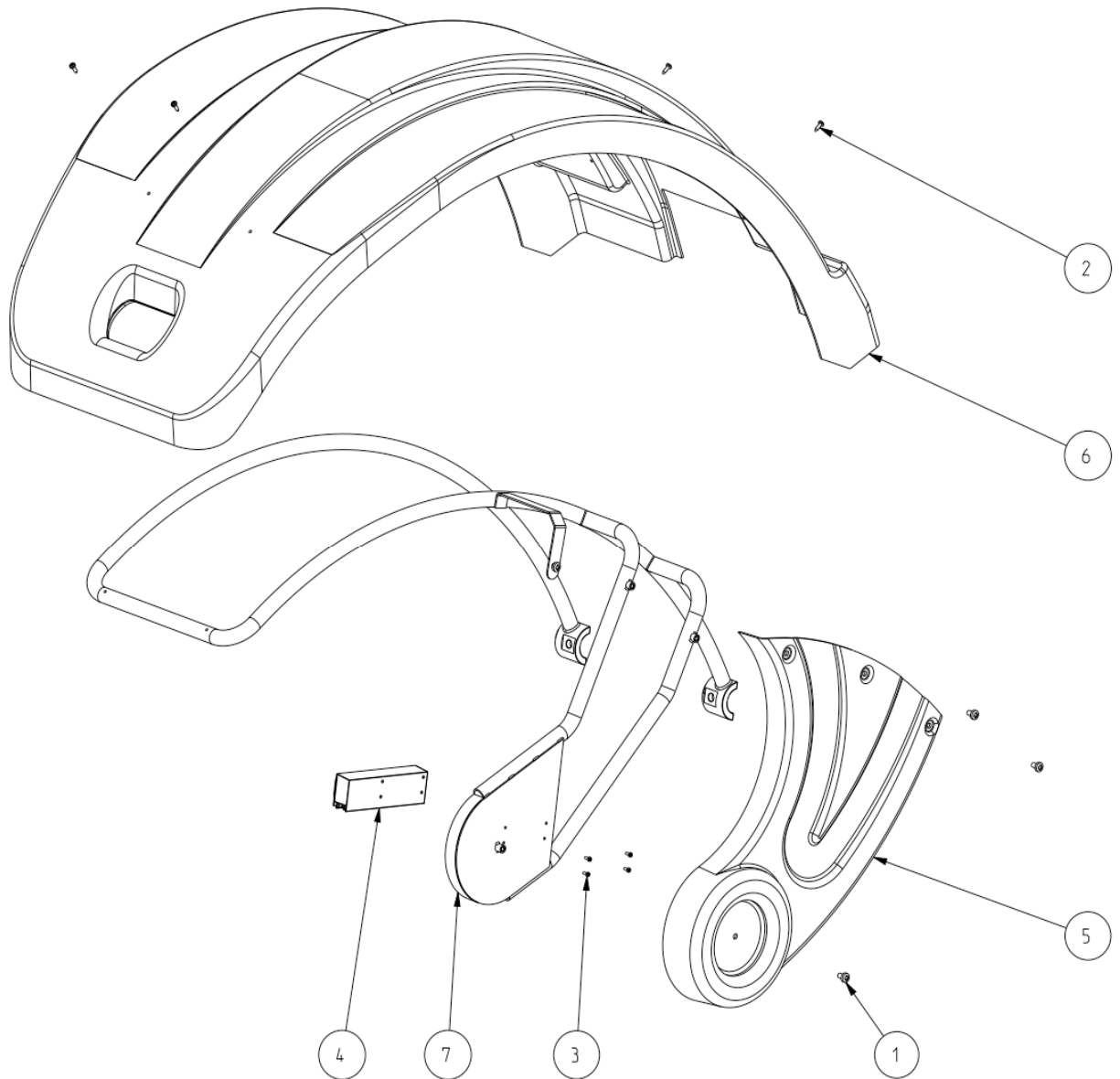
REF#	QTY	PART NUMBER	DESCRIPTION
1	1	EAP0290G30A	LED LAMP BOARD
2	1	EAW0282G98A	LED LAMP CABLE
3	1	EAM0093G67A	LED WINDOW
4	2	1-1548	WASHER-EXT, SHAKEPROOF 6MM
5	3	1-16309	SCREW - SHCS, M6 X 16mm,
6	1	EAC0103G85A	LED LIGHTING SUPPORT
7	3	1-22623A	9X13 SELF TAP SCREW
8	4	1-22323A	SCREW, S/T.PAN, 5.5x15mm BLK.
9	2	1-13026A	3X6 SCREW
13	1	1-49810A	SET SCREW, M6x25 HEX SOCKET W/CUP
23	1	EAA0357G43A	INSIDE SCANNER COVER
26	1	EAA0394G27A	INSIDE SCANNER (CCD & PROCESSOR BOARD)
N/S	1	6-01429A	FFC CABLE 720mm 18 CON XXX (SCANNER)



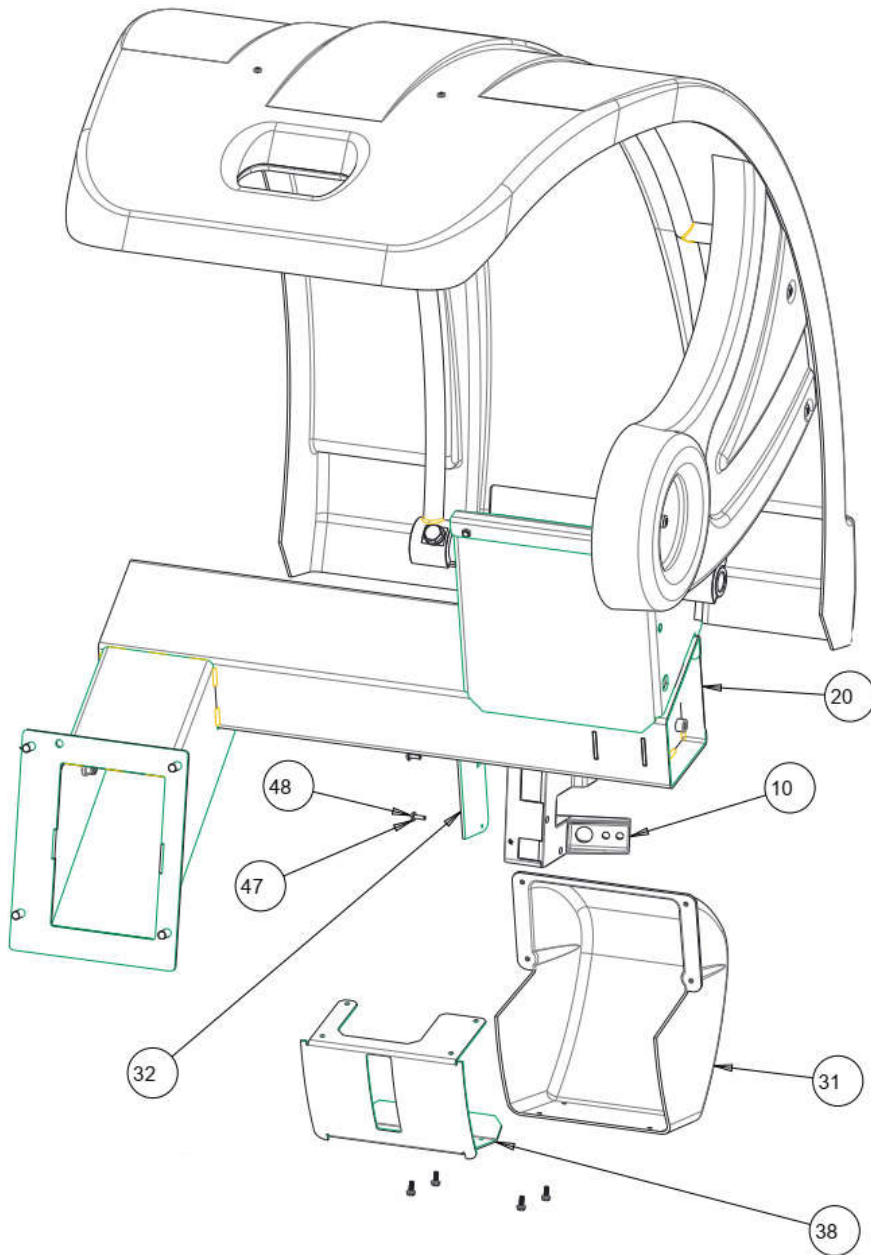
REF#	QTY	PART NUMBER	DESCRIPTION
1	1	1-02430A	"EYE"-SCREW M8X80
2	1	1-06769A	GAS SPRING
3	1	8-14418A	BUMPER 25X10 / M8X25
4	1	EAW0233J08B	CABLE-SWITCH ASSY
5	1	1-04267A	SPRING-TORSION
6	1	EAC0053J16A	MICROSWITCH PLATE
7	2	EAC0058D36A	WHEELGUARD BUSHING D.32
8	1	1-22441A	SHIM RING 32X45X1
9	1	EAC0058D38A	SCHALTRING SWITCH SEGMENT
11	6	1-11733	NUT M8 6S STAND WHITE ZINC
12	6	1-10041	WASHER D.8 UNI6592-69/DIN125
14	2	1-9541	WASHER-FLAT,M3 DIN 125A
15	1	1-12452	PINS STRAIGHT SLOTTED 8X45 DIN 1481
16	2	1-26901	SCREW,HEX HEAD MAC. M3X20 8.8 A2
19	1	1-18709A	SCREW 8X70 8.8 BLK UNI5931-67
20	2	1-18209	SHCS-M8 X 45
21	2	1-20409	SCREW TCEI M12X35 12.9 BR
23	1	1-47810	SCREW, SET, FLT PT M8 - 1.25 X 8MM
25	1	EAM0092G21AC	WHEEL GUARD SHAFT
27	1	EAM0093G52AC	WHEELGUARD STOP
28	1	EAS2139G44AC	BACK PACK FRAME





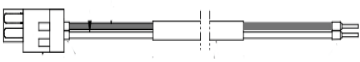


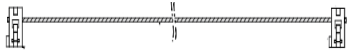

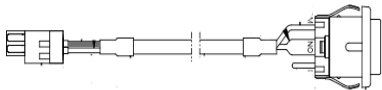
REF#	QTY	PART NUMBER	DESCRIPTION
10	1	2-23201	TERMINAL LUG-6.3MM X .8MM POP RIVET
12	6	1-10041	WASHER D.8 UNI6592-69/DIN125
13	2	1-10141	WASHER, PLAIN DIN 125A
17	2	1-20001	SCREW, HEX HEAD M10X55 8.8 A2J
18	4	1-17709	SCREW - SHCS M8 X 20MM
22	23	1-12624A	SCREW - THREAD FORMING, M4X.07
26	2	EAM0092G22AC	FIXING PLATE
29	1	EAS2139G48AC	REAR COVER
30	1	EAS2139G49AC	COVER BACK PACK



REF#	QTY	PART NUMBER	DESCRIPTION
1	4	1-31406A	CROSS RECESSED PAN HEAD M6X10-4.8-A2J
2	4	1-22623A	SELF-TAPPING SCREW TCB D 3,9X13
3	4	1-10226A	SCREW FOR PLAST. PHIL.PAN H. D.3X8
4	1	EAA0364G04A	ASSY SONAR BOX FOR PIPE
5	1	EAC0103G81A	SONAR COVER
6	1	EAM0092G18A	REINFORCED WHEELGUARD B1200P
7	1	EAS2139G50A	WHEELGUARD FRAME WELDED
N/S	1	EAW0283G82A	B1200 SONAR CABLE
N/S	1	EAW0283G83A	B1200 SONAR EXTENSION CABLE



REF#	QTY	PART NUMBER	DESCRIPTION
10	1	EAA0409G27A	ASSY SCANNER
20	1	EAA0393G65AC	ASSY BACK PACK AND WHEELGUARD
31	1	EAC0114G04A	SCANNER COVER
32	1	EAS2153G59AC	FRAME SCANNER
38	1	EAS2153G60AC	B1200 SCANNER PROTECTION
47	2	1-16441	WASHER-FLAT, M4 4.3MM ID X 1MM THK
48	2	1-2506	MSCR PNH #6-32 X 1/2

IMAGE	PART NUMBER	DESCRIPTION
	EAW0233J07A	HARNESS-WIRING, TRANSFORMER
	6-01429A	SCANNER CABLE-FFC 720MM 18 G PLT CON
	EAW0283J12A	SWITCH ON LED CABLE
	EAW0233J08B	CABLE-SWITCH ASSEMBLY 47.5"
	EAW0283G83A	CABLE SONAR SENSOR EXT B1200P
	EAW0283G11A	IBP2 INTERFACE CABLE
	EAW0283G82A	CABLE IIC SONAR B1200P
	EAW0283G70A	CABLE WITH STOP PUSH BUTTON



Notice:

The information contained in this document is subject to change without notice. Snap-on Equipment makes no warranty with regard to this material. Snap-on Equipment shall not be liable for errors contained herein or for incidental consequential damages in connection with furnishings, performance, or use of this material. This document contains proprietary information which is protected by copyright and patents. All rights are reserved. no part of this document may be photocopied, reproduced, or translated without prior written consent

John Bean Company  
309 Exchange Ave.  
Conway, Ar 72032  
501-450-1500