

# JohnBean

**B600P  
EEWB568AL 230  
EEWB568AL  
AUTOMATIC WHEEL BALANCER  
WITH TOUCHSCREEN**



*Power clamp version shown*

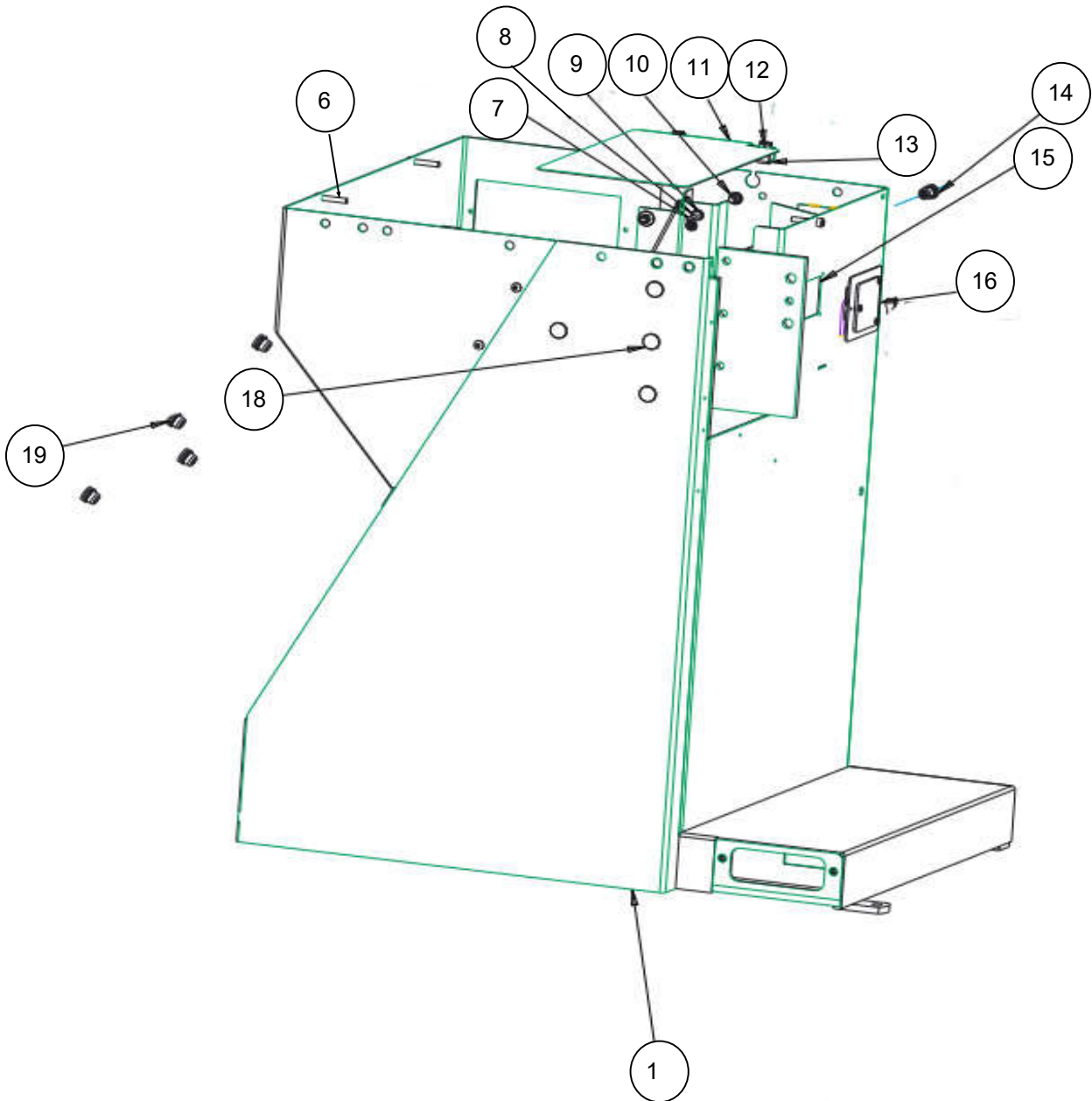
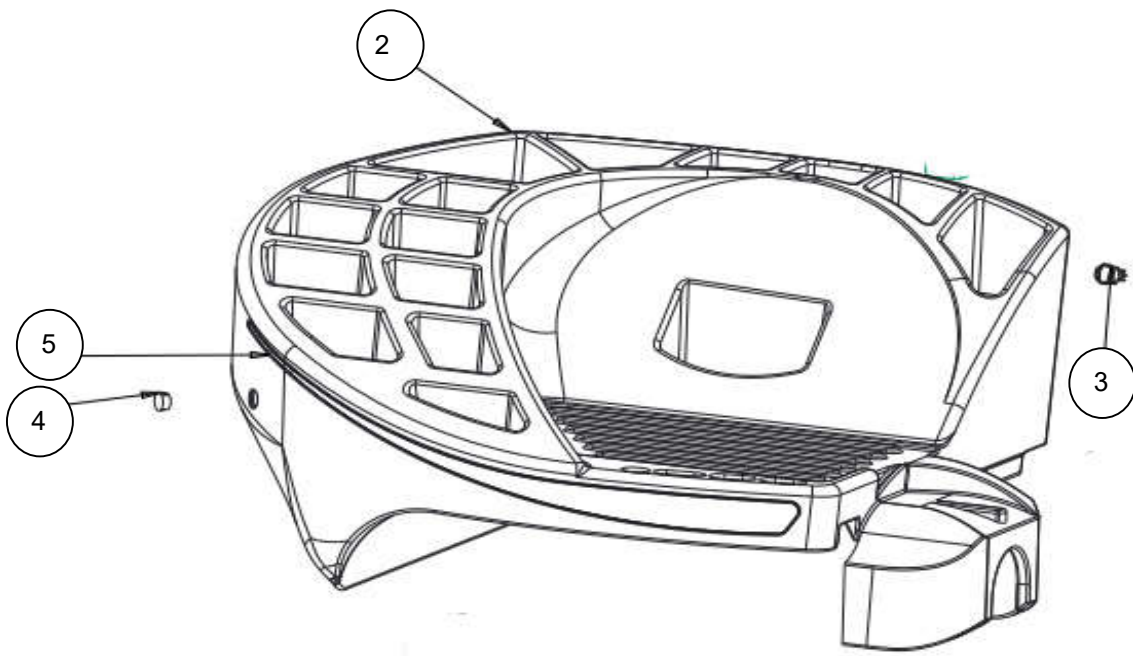
**PARTS MANUAL**

## EEWB569AL220 BOM

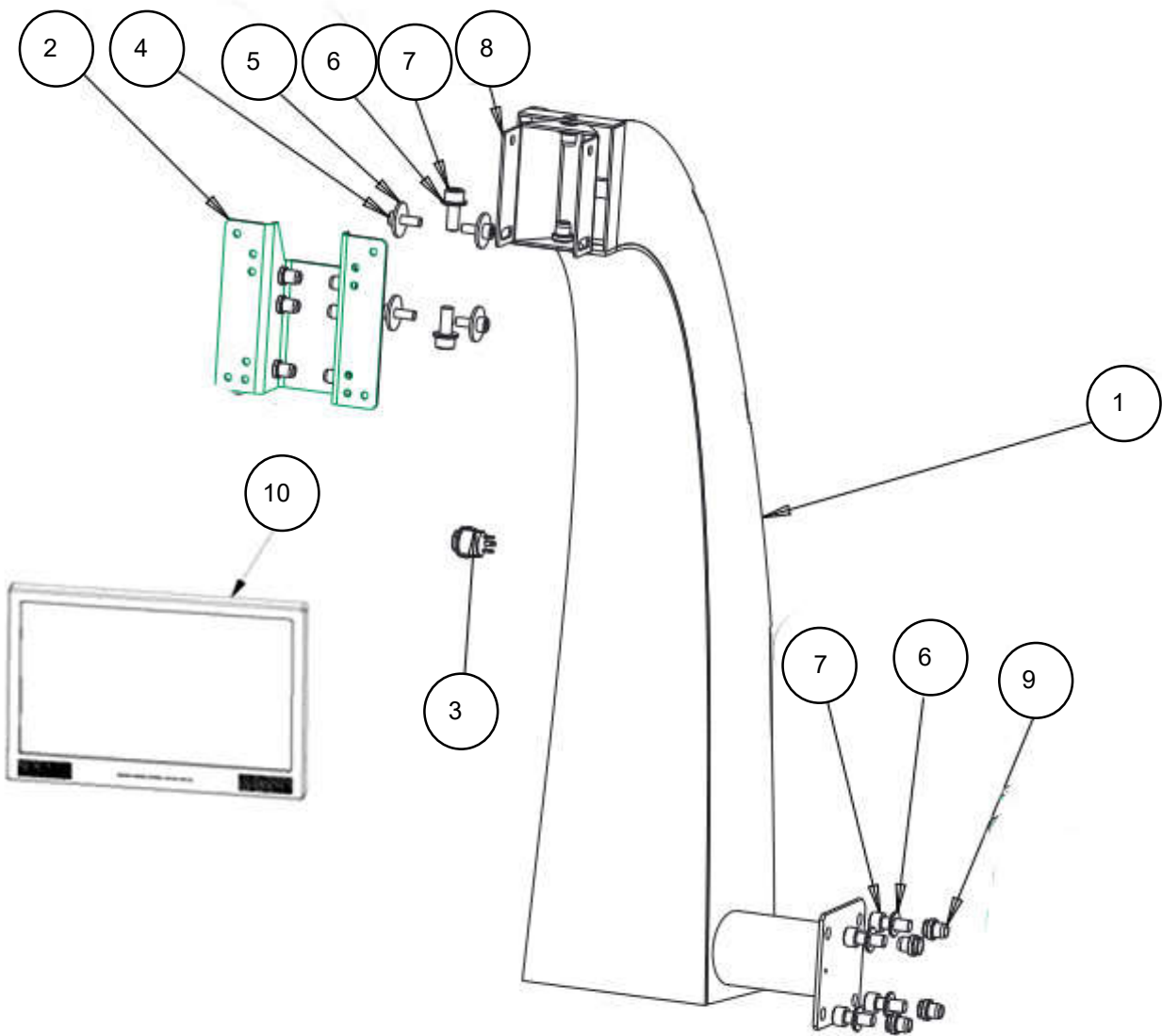
PART NUMBER	DESCRIPTION
EAK0309J30A	CR MONT 19IN W/TOUCHSCR UL-KIT
EAA0369J66A	HOOD ASSY-WITH SONAR
EAX0039J01A	CORD-POWER 230V
EAA0369J92A	BAL ASSY-B600L
89209000	CORD-POWER ADAPTER 12
EAC0058D68A	SPACER, 29660
EAK0309J28A	KIT - 4 CONE
EAM0003J69A	CONE (3.42 - 5.25)
EAA0263G79A	QUICK NUT KIT
ZEEWB568A9	LIT PACK B600
EAL0341J63A	LABEL-PATENT
EAL0341J56A	LABEL-LASER
EAL0420J33A	LABEL-CAUTION MAX WHEEL DIA
EAC0105J41A	NAMEPLATE-JOHN BEAN TM
EAL0341J70A	LABEL-LASER APERTURE
EAL0341J71A	LABEL-CFR CERTIFICATION
EAL0392J89A	LABEL-CUST SVC JBC
EAL0341J96A	LABEL-BALANCER WARNING REAR
EAL0341J97A	LABEL-BALANCER WARNING SIDE
EAL0343J76B	SERIAL LABEL DOCUMENT
EAL0420J47A	MODEL DECAL B600L
EAM0005D40A	CALIBRATION WEIGHT
00058839000	TOOL-PDQ WEIGHT PASS CAR

## EEWB569AL BOM (115V) ADD'L

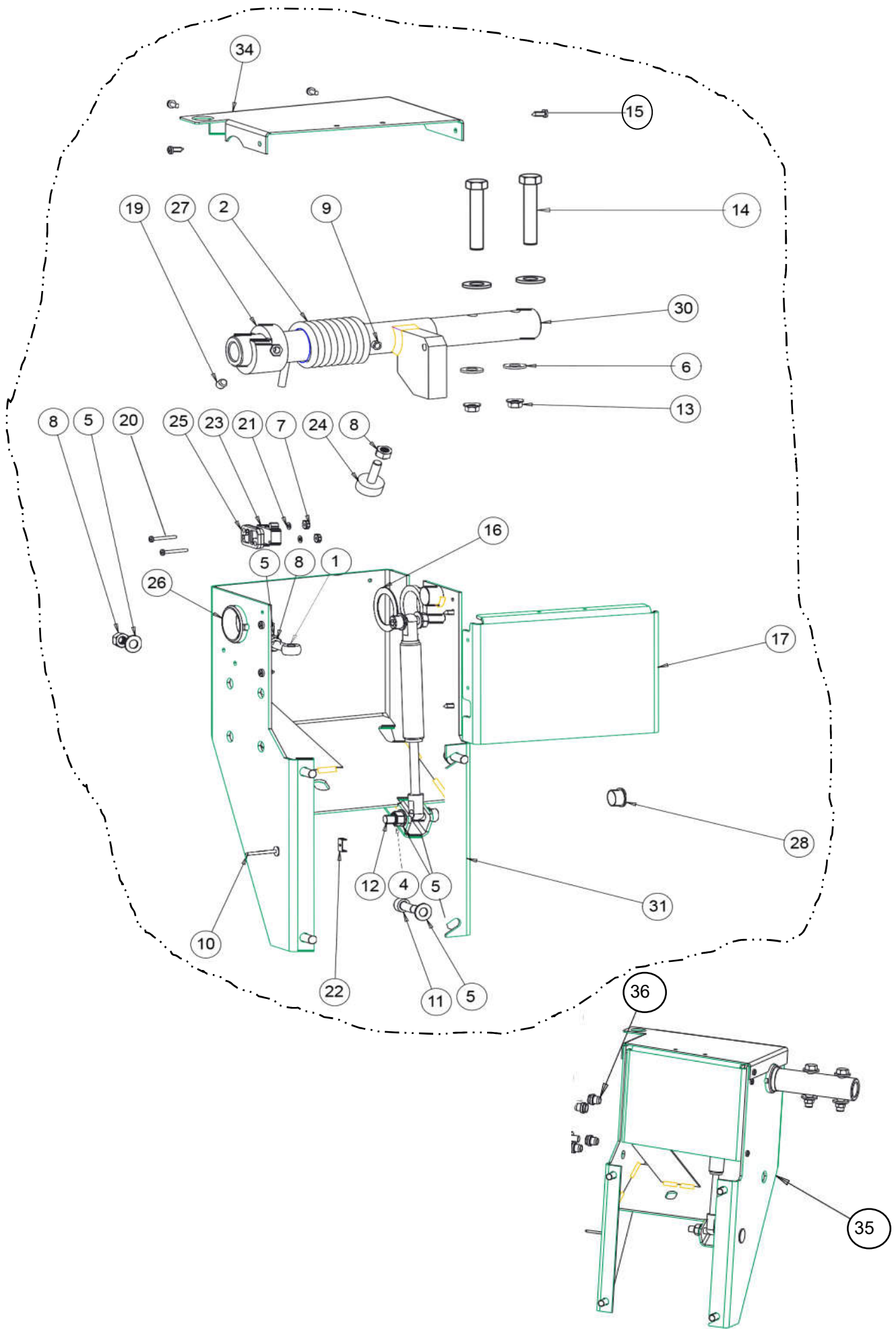
PART NUMBER	DESCRIPTION
7-16201A	TRANSFORMER
EAW0233J07A	HARNESS-WIRING, TRANSFORMER
EAW0290J26A	POWER CABLE-5 METERS (REMOVE EAX0039J01A)



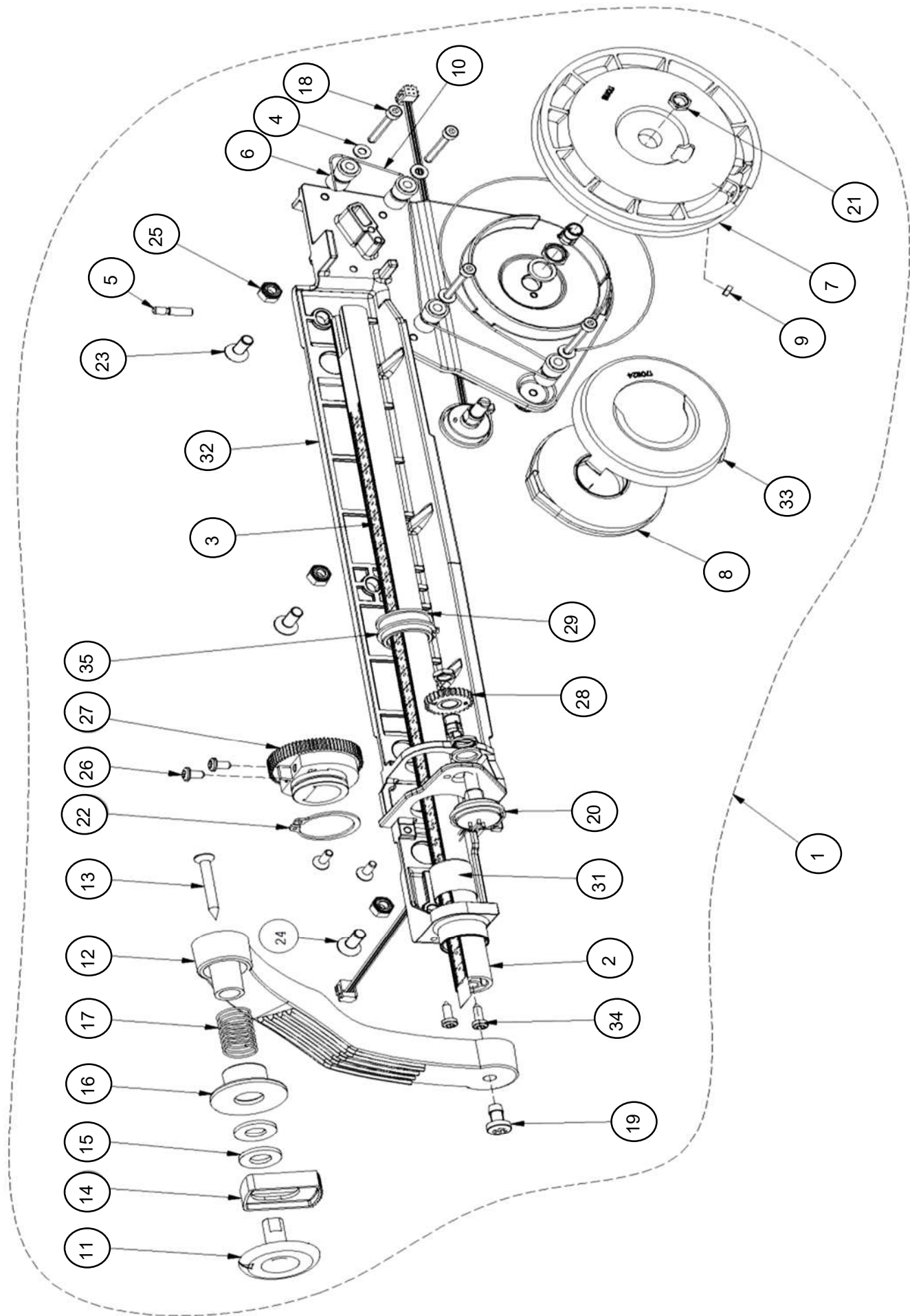
REF#	QTY	PART NUMBER	DESCRIPTION
1	1	EAA0423J45A	BALANCER CABINET MEDIUM RED
2	1	EAM0091G89A	WEIGHT TRAY BFH500
3	1	EAW0283G70A	CABLE WITH STOP PUSH BUTTON used up to 3/15/2023
		EAW0283G01A	CABLE WITH STOP PUSH BUTTON used after 3/15/2023
4	1	1-03776A	PLUG DOME used thru 6/6/2018
5	1	EAC0103G55A	CHROME PLATED PLASTIC BAR used thru 10/19/2021
6	3	1-03725A	SCREW-PH SELF TAP M6.3X32 PHIL
7	1	1-7558	RIVET
8	1	2-23201	TERMINAL-LUG POP RIVET
9	1	1-1548	WASHER-6MM SP-PURCH TEXT
10	3	1-18359A	NUTSERT-M8 X 1.25
11	1	EAS2128J67A	SHIELD-FIRE
12	2	1-2509	SCREW-BHCS 1/4-20 X 5/8
13	2	1-07439A	NUT-TINNERMAN 1/4-20
14	4	8-7216	PLUG-HOLE 16MM
15	1	1-18359A	NUTSERT-M8 X 1.25
16	1	EAA0393G87A	LED LAMP ASSY
17	1	EAA0508G88A	ASSY COVER FOR M CABINET
18	4	8-7216	PLUG-HOLE 16MM
19	4	1-17659a	NUTSERT-M10
20			



REF#	QTY	PART NUMBER	DESCRIPTION
1	1	EAS2258G73A	MONITOR SUPPORT NA
2	1	EAA0345G43AC	ASSY VESA SUPPORT
3	1	EAW0283G70A EAW0283G01A	CABLE WITH STOP PUSH BUTTON USED UP TO 3/15/2023 CABLE WITH STOP PUSH BUTTON USED AFTER 3/15/2023
4	4	1-16309	SCREW - SHCS M6 X 16MM
5	6	1-22941A	WASHER M6 6.5MM IDX24MM OD
6	6	1-10041	WASHER D.8 UNI6592-69/DIN125
7	1	1-17709	SCREW - SHCS M8 X 20MM
8	1	EAS2128J83A	MONITOR SUPPORT VERSA MOUNT
9	1	1-18359A	NUTSERT-M8 X 1.25
10	1	EAK0309J30A	MONT 19IN W/TOUCHSCR UL-KIT
INCL	1	3-08108A	MONITOR 19IN RESISTIVE TOUC
INCL	4	1-54310A	SCREW SET M4X20 FLT
INCL	4	1-13533A	NUT BARB M4 (EXT WASHER)
INCL	1	EAL0452J15A	MASK-NAME LCD

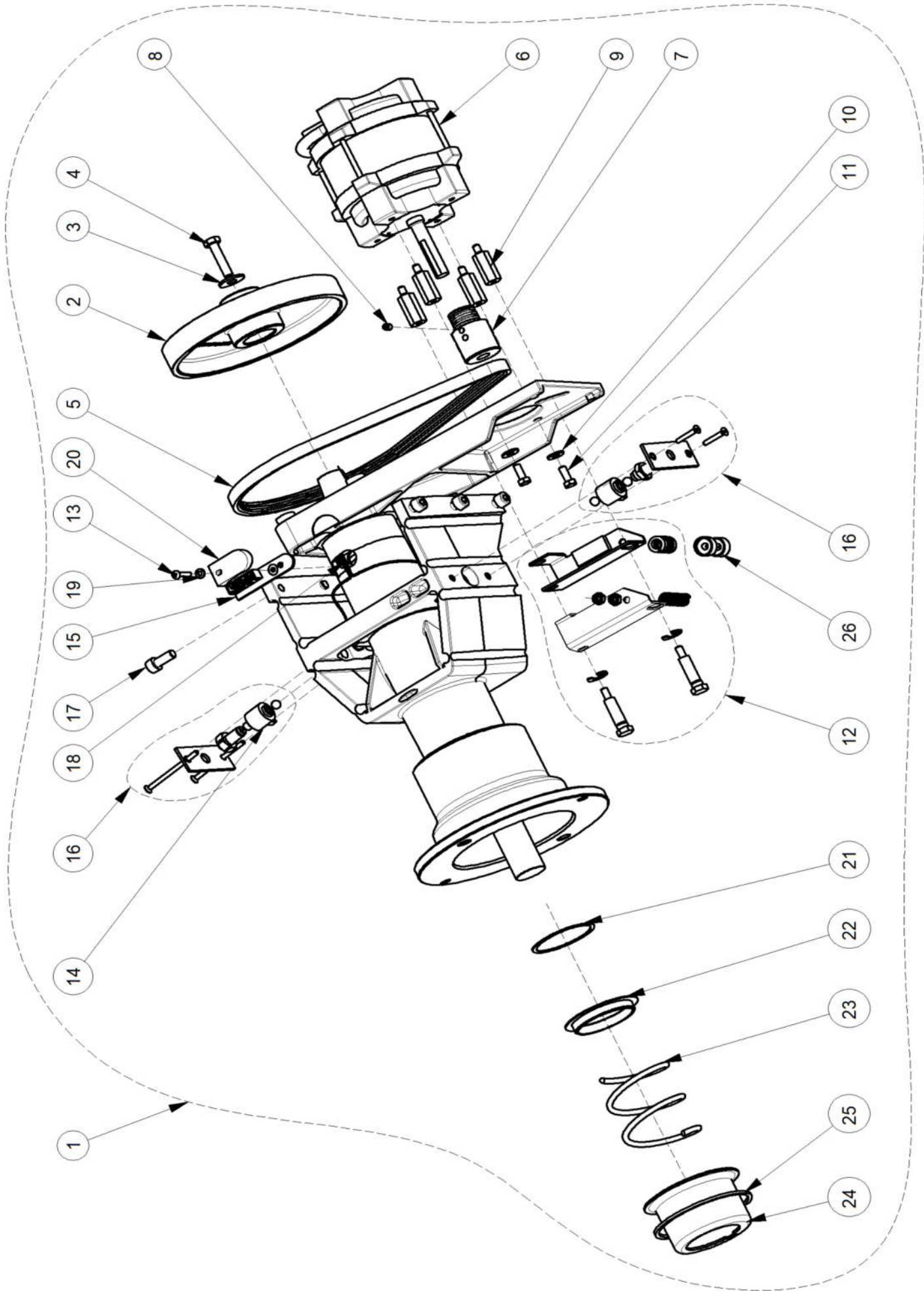


REF#	QTY	PART NUMBER	DESCRIPTION
1	1	1-01530	EYEBOLT-M8 X 50
2	1	1-04267A	SPRING-TORSION (1614017)
3	1	1-06769A	QR GAS SPRING COMPRESSION
4	2	1-10033	NUT-ESNA M8
5	10	1-10041	WASHER, PLAIN M8
6	4	1-10141	+WASHER-PLAIN DIN 125A
7	2	1-15033	NUT-KEPS M3-.5
8	4	1-15933A	NUT-HEX 8M-1.25
9	1	1-12452	PIN-M8 X 45
10	2	1-7558	RIVET
11	4	1-17709	BOLT-M8 X 1.29 X 20MM
12	2	1-18209	SHCS-M8 X 45
13	2	1-8133	NUT-KEPS 3/8-16
14	2	1-1101	SCREW HHCS 3/8 16 X 2
15	1	1-12624A	SCREW-HEX HD M4X.39 THRD FORMING
16	1	1-22441A	SHIM RING- 32 X 45 X 1
17	8	EAS2177G41AC	BACKPACK FRONT COVER
19	1	1-47810	SCREW SET M8 X 8MM FLAT PT
20	2	1-02307A	SCREW-PHMS M3 X 25MM
21	2	1-9541	WASHER-FLAT M3 DIN 125A
22	1	2-23201	TERMINAL-LUG POP RIVET
23	1	EAW0233J08B	CABLE-SWITCH ASSEMBLY 47.5"
24	1	8-15218A	BUMPER M8X40 NEOPRENE
25	1	EAC0053J16A	MICRO SWITCH PLATE
26	2	EAC0058D36A	BUSHING-D132MM (1324032)
27	1	EAC0058D38A	SWITCH SEGMENT (1631040)
28	1	8-7216	PLUG-HOLE 16MM
30	1	EAM0084J39A	SHAFT STOPBLOCK WLDMT
31	1	EAS2128J49A	ASSY BACKPACK 42 IN
34	1	EAS2128J54A	SUPPORT WHEELGUARD COVER
35	1	EAA0369J65A	WHEELGUARD SUPPORT ASSY 42 IN
36	4	1-18359A	THREADED INSERT M8X1,25

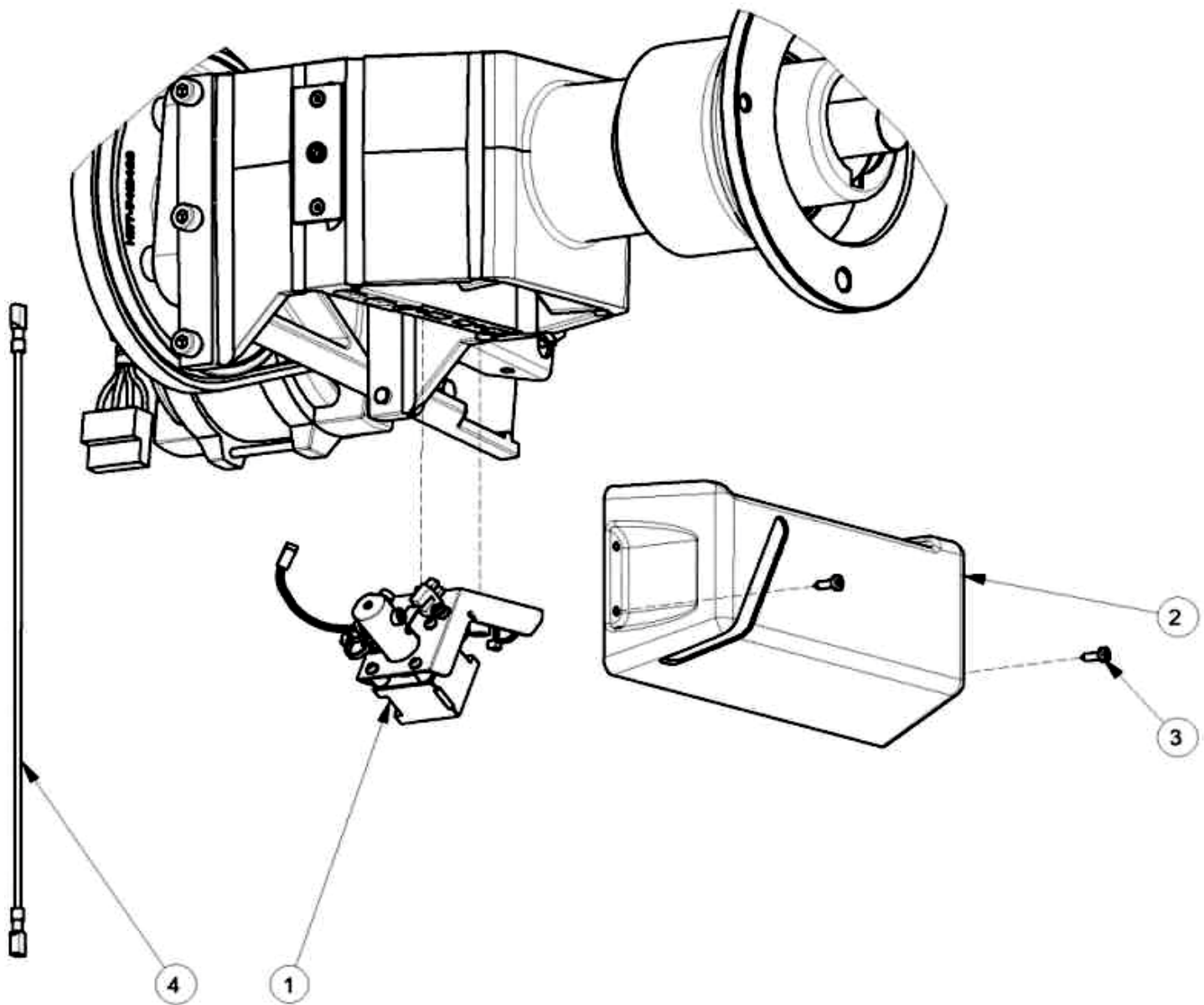




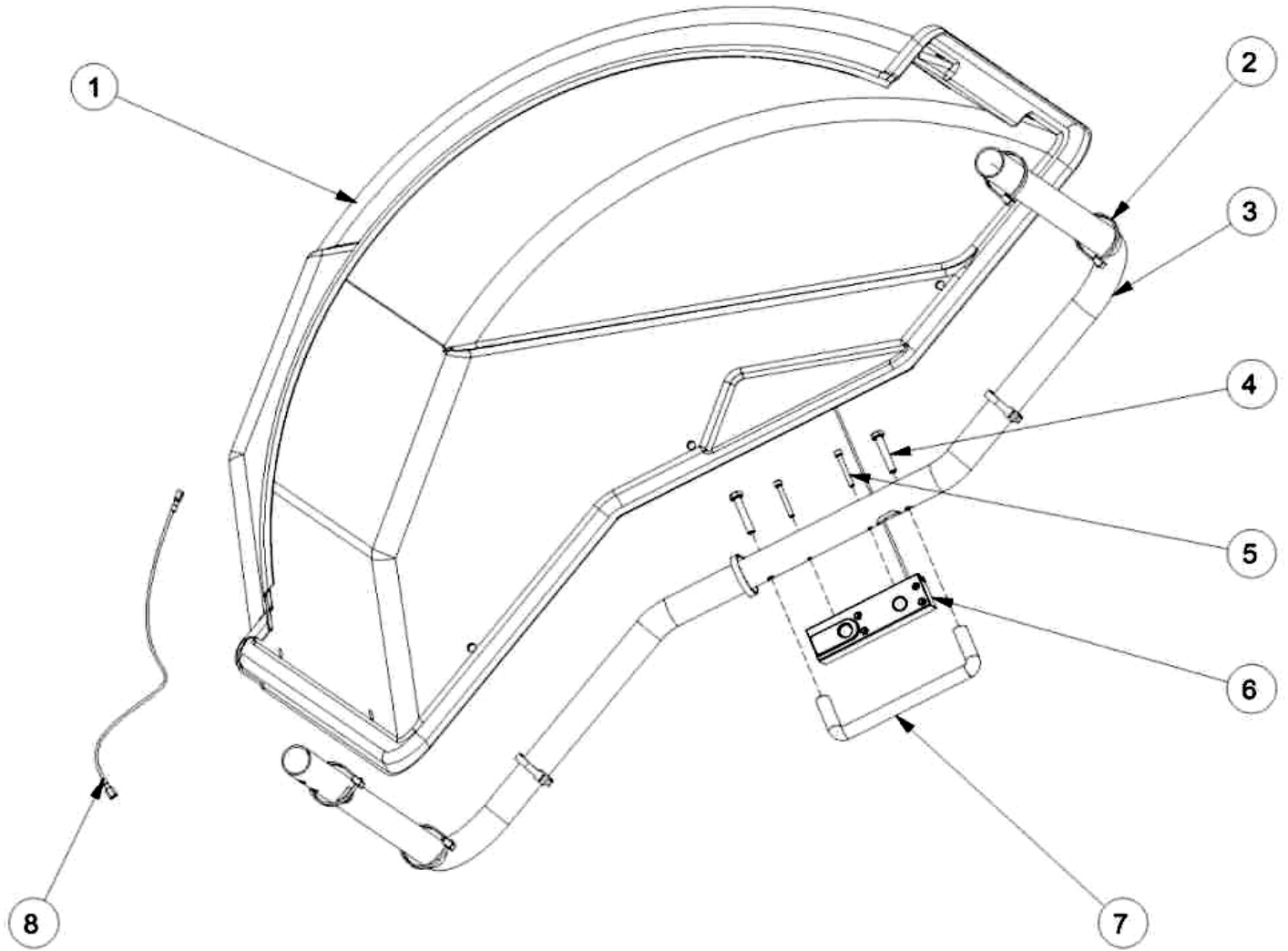
REF	QTY	PART NUMBER	DISCRIPTION
1	1	EAA0471G18A	M2 SAPE 1D-2D ASSY
2	1	EAM0053G19A	STANDARD. ROD SAPE, M2 ASTA
3	1	EAM0140G91A	DISTANCE SCALE DECAL (MM)
4	4	1-9641	WASHER
5	1	EAM0181G08A	MACHINED SCREW M4
6	4	EAM0005D35A	GUIDING REEL RULLO DI RINVIO
7	1	EAC0058D06A	RETURN PULLEY
8	1	1-08167A	STAND. SAPE TENSION SPRING
9	1	1-11233	NUT - M3 WHITE ZINCKED
10	1FT	6-00604A	ROPE SPECTRA 1000 D 0,6
11	1	EAC0058D11A	FEELER DISK
12	1	EAC0054P01A	ARM, AXCEL CALIPER
13	1	1-3624	SCREW POLYPLAST M5X40
14	1	EAC0058D09A	REGISTER, EJECTION
15	2	1-10141A1	WASHER P.D.10
16	1	EAC0058D10A	RING, PUSH
17	1	1-06868A	SPRING, COMPRESSION
18	4	1-13909	SCR - HEX SKT HD CAP M4X30
19	1	1-3824	SCREW M6X12
20	2	EAA0266D20A	POTENTIOMETER UNIT WITH NUT
21	2	2-07657A	CLAMPING DEVICE
22	1	1-13377A	CIRCLIP FOR SHAFT
23	3	1-22003A	SCREW 6X16 10K
24	2	1-17726A	SCREW TPS 9X13
25	3	1-9933	NUT, PREVAILING TORQUE M6
26	2	1-11726A	SCREW FOR PLAST. PHIL. PAN
27	1	EAC0058D12A	COG WHEEL 56 TEETH
28	1	EAC0058D13A	WHEEL GEAR
29	1	EAM0068G76A	S2-D2 BUSHING
31	1	1-13865A	BUSHING
32	1	EAM0125G67A	MACHINED SAPE SUPPORT FOR M CABINET
33	1	EAC0058D58A	SAFETY COVER
34	2	1-22623A	SCREW, PHIL PAN H.TAPP.
35	1	1-4577	RING SNAP



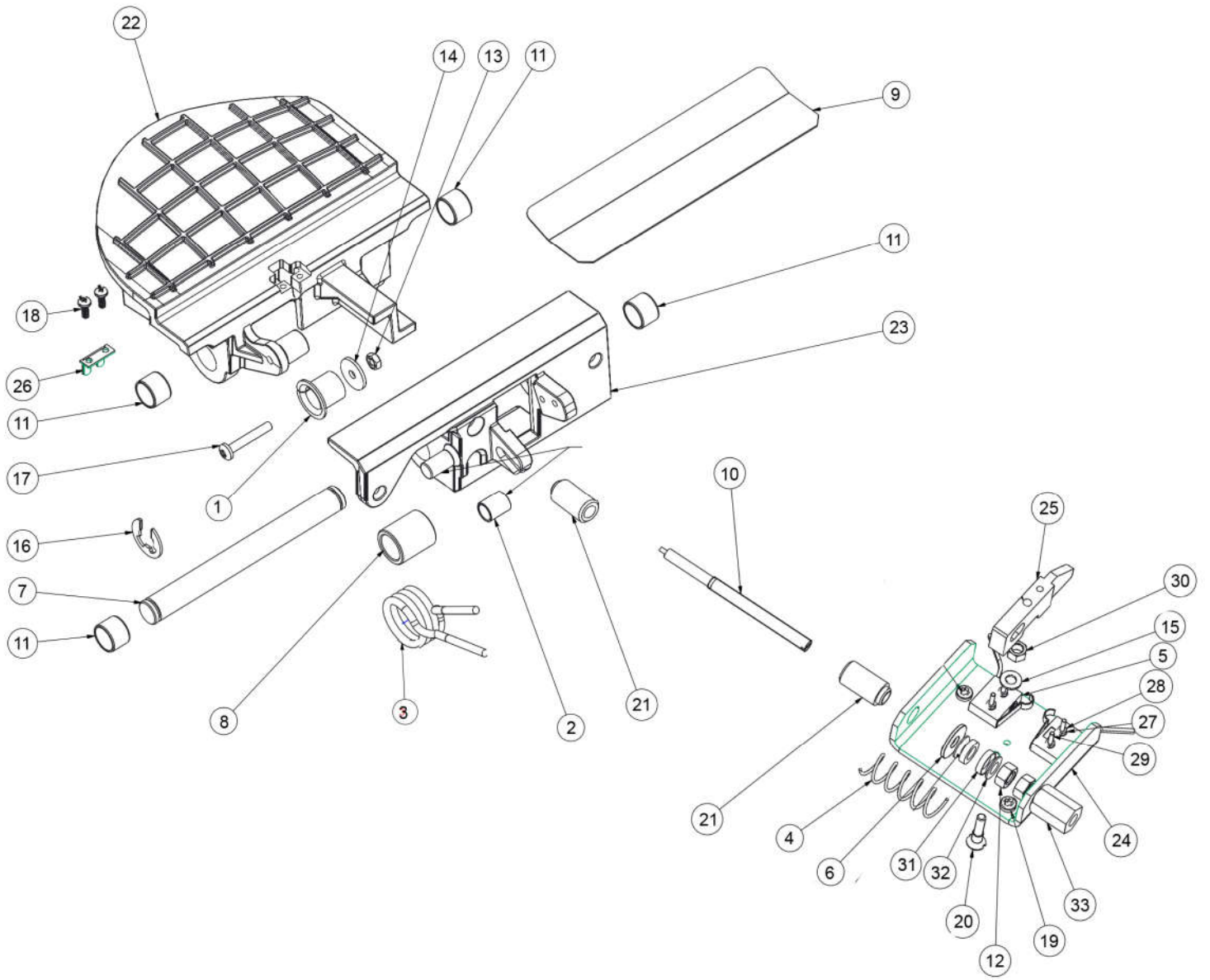
REF#	QTY	PART NUMBER	DESCRIPTION
1	1	EAA0364G85A	ALU VS MOT. INT. FL.D. 40/28,5 POL. UL
2	1	EAM0005D12A	DRIVE PULLEY
3	1	1-17841	WASHER - D. 8X24
4	1	1-32901	HEXAGON HEAD SCREW
5	1	8-3531	BELT
6	1	2-59366A	UL MOTOR INCL. CONNECTOR Y2K
7	1	EAM0005D08A	MOTOR PULLEY
8	1	1-28410	SCREW
9	4	EAM0005D09A	SPACER FOR MOTOR
10	2	1-16641	WASHER PLAIN
11	2	1-46701A	HEX HEAD SCREW
12	1	EAA0332G12A	MAIN SHAFT LOCK ASSEMBLY
	2	EAM0005D10A	BOLT SW13
	2	1-13177	CIRCLIP D. 9
	1	1-6568	COMPRESSION SPRING 1.6 X 10 X 58.5
	1	EAA0260D56A	BRAKE LEVER A CP L (UPPER)
	1	EAA0260D57A	BRAKE LEVER B CPL. (LOWER)
13	1	1-35006A	SCREW
14	1	EAA0260D59A	TRANSDUSER
15	1	EAA0344G00A	ECODER BOARD
16	1	EAA0328G16A	TRANSDUCER FIXING UNIT
	4	8-1144	STEEL BALL 8 M
	2	1-6568	COMPRESSION SPRING 1.6 X 10 X 58.5
	2	EAM0005D07A	SETSCREW HEX SOCKET M10X1X29
	1	1-04634A	NUT HEX LOW M10X1 8-A2J ISO 8675
	2	1-17403	SCREW HEX SOCKET COUNT.H M4X25 8.8-
	2	1-19903A	SCREW HEX SOCKET COUNT.H M4X65 8.8-
	1	1-11833	HEXAGON NUT B M10 X 1 -8-A2J
17	6	1-17709	SCREW TCEI 8X20 8G
18	1	EAW0240G67A	CABLE WITHOUT TEMP. SENSOR
19	1	1-9641	WASHER
20	1	EAC0094G11A	ENCODER BOARD PROTECTION
21	1	1-17641	WASHER 53X60X1
22	1	EAC0058D14A	SPRING CENTERING RING
23	1	1-07768A	COMPRESSION SPRING
24	1	EAS2025D14A	SPRING GUIDE
25	1	1-13077	CIRCLIP SB 92
26	2	EAM0005D18A	SPACER



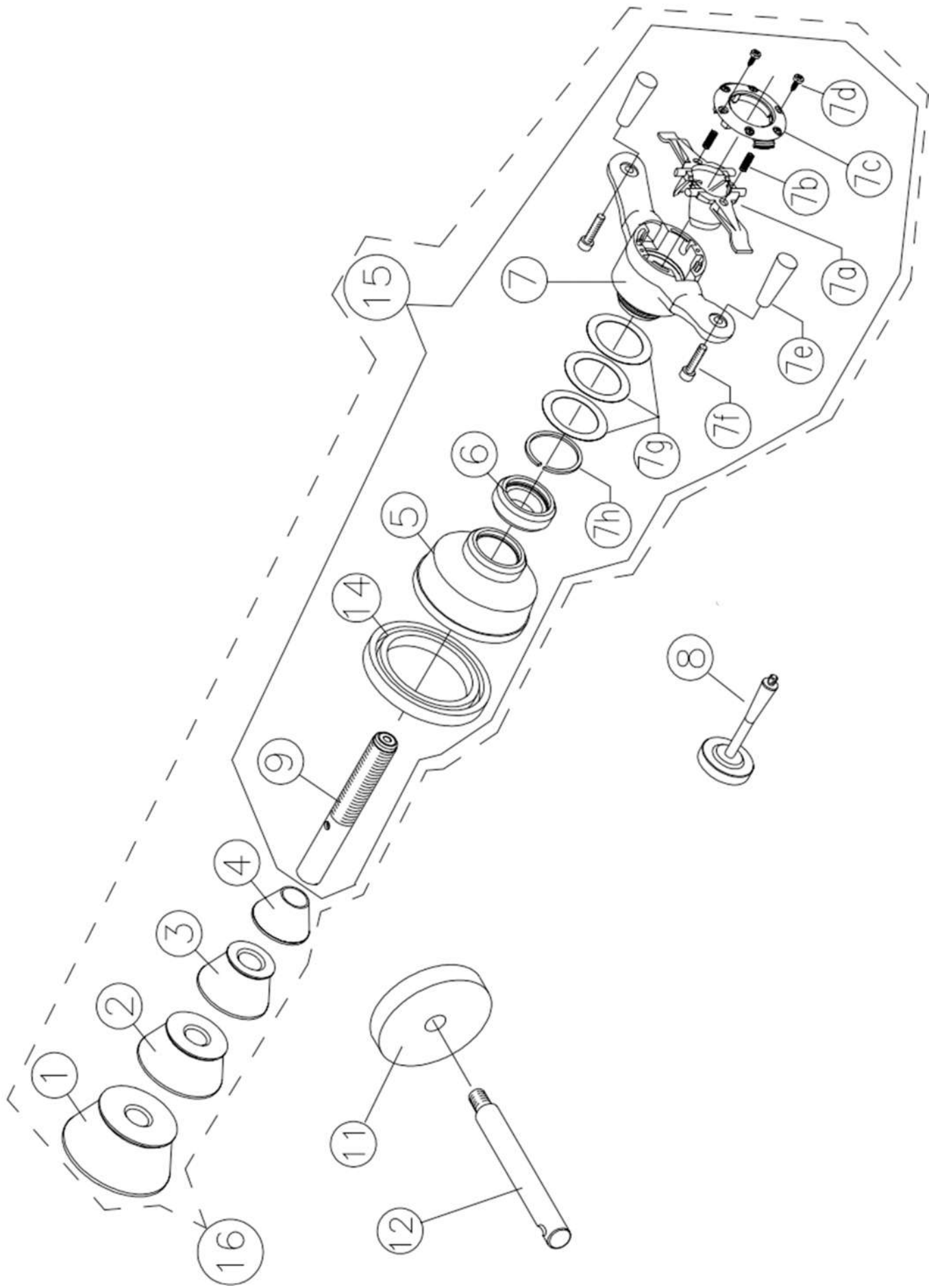
REF#	QTY	PART NUMBER	DESCRIPTION
1	1	EAA0394G93A	LASER POINTER WITH LONG CABLES
2	1	EAC0103G31A	LASER POINTER COVER
3	2	1-22623A	SCREW, PHIL PAN H.TAPP.
4	1	EAW0276G28A	LASER POINTER EXTENSION WIRE



REF#	QTY	PART NUMBER	DESCRIPTION
1	1	EAC0100G21A	WHEEL GUARD 42"
2	7	5-03345A	CABLE TIE
3	1	EAM0076G34A	WHEEL GUARD PIPE
4	2	1-19101A	SCREW, HEX
5	2	1-15509	SCREW
6	1	EAA0440G00A	ASSY SONAR FOR PIPE
		EAA0373G96A	QR SONAR BOX ASSY-VIDEO BAL
		EAW0283G77A	CABLE SONAR SENSOR MID RANG
7	1	8-09233A	PLASTIC HANDLE
8	1	EAW0283G76A	SONAR SENSOR EXTENSION CABLE

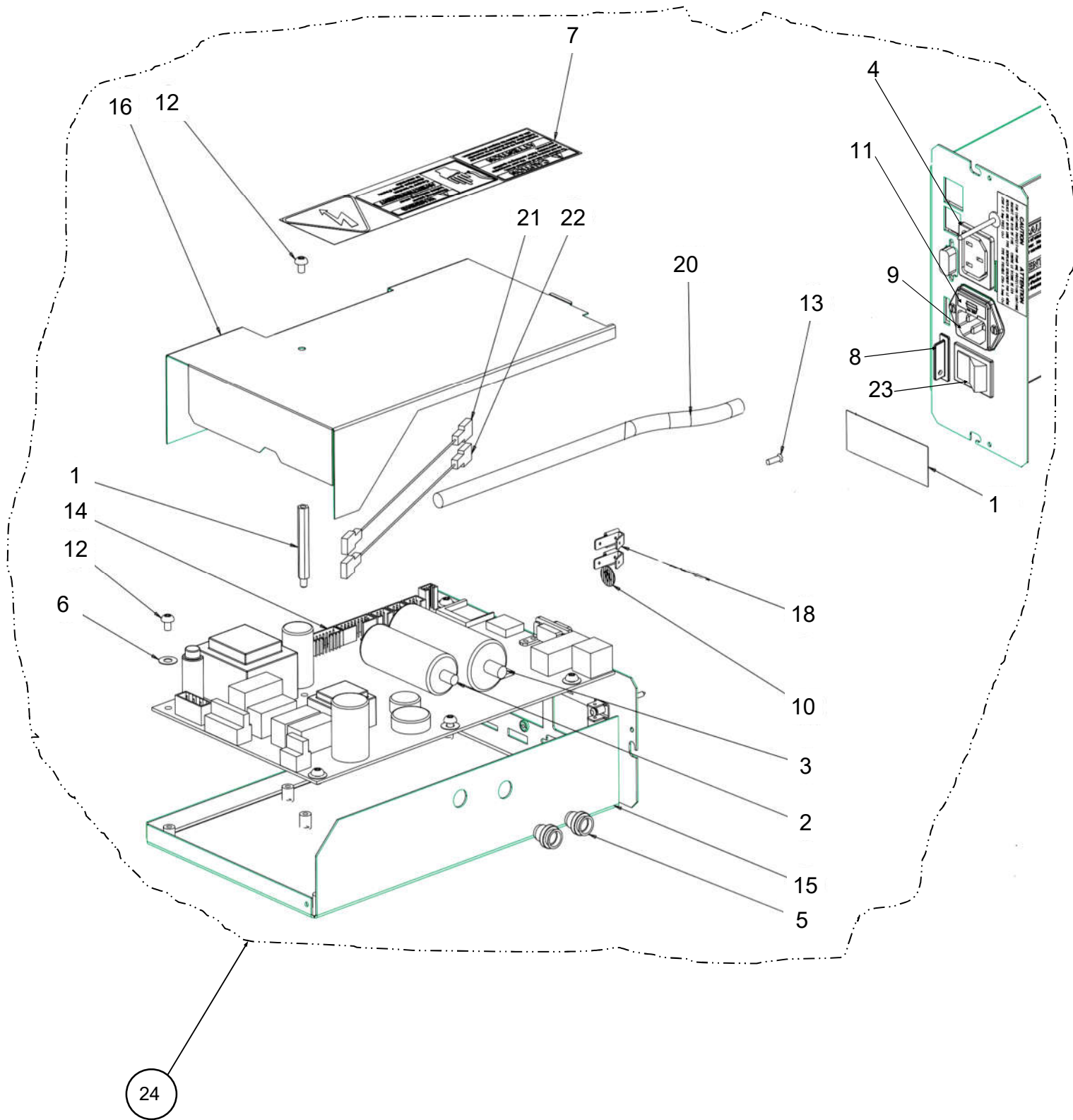


REF#	QTY	PART NUMBER	DESCRIPTION
N/S	1	EAA0409G98AC	ALU BRAKE PEDAL 2 SWT UL VER
1	2	EAM0181G49A	BUSHING DBLE SHOULDER 12X14X15
2	2	EAM0181G04A	SPACER WITH FLANGE 8.4
3	1	EAM0048G78A	QR SPRNG PDL SWITCH(0016103)
4	1	1-12068A	SPRING COMPRESSION
5	1	2-07661A	MICRO SWITCH-25709 (H4402111)
6	1	1-20041A	WASHER - FLAT M6.4X18X1.6
7	1	EAM0046G39A	PIN PEDAL
8	1	EAM0051G96A	BUSHING CENT SPRING BR-0031787
9	1	EAL0443G72A	PEDAL PROTECTION ADHISIVE
10	1	EAA0344G15A	QR CABLE-BRAKE PEDAL 0032324
22	1	EAM0122G48A	PEDAL MACHINED UL-22305
23	2	EAM0181G72A	SUPPORT BRAKE PEDAL
24	1	EAS2128J78A	MICROSWITCH SUPPORT
25	1	EAM0153G24A	ACTUATOR POWER CLAMP
26	1	EAS2128J75A	CABLE STOP
27	1	1-1048	WASHER-EXT M2 SHAKEPROOF
11	1	1-10165A	BUSHING SELF TP 1210-P10 34711
12	1	1-11633	NUT M6 X 5, 2MM THK BLK
13	1	1-11433	NUT-M4 HEX DIN 934
14	1	1-22741A	WASHER PLAIN 7021122
15	1	1-36741A	SHIM RING
16	1	1-18477A	RETAINING RING(ST7022039)
17	1	1-26506A	SCREW-PHMS M4 X 25
18	1	1-20504A	SCREW-TCB CROSS 3X7
19	1	1-22623A	SCREW-PH PN H TAP 3.9X13 A2J C
20	1	EAM0153G23A	PIN ACTUATOR POWER CLAMP
21	1	EAM0103G42A	SPACER FOR BRAKE CABLE
28	1	1-11033	NUT-M2 HEX
29	1	1-36606A	SCREW-PHIL PAN M2-16
30	1	1-11533A	NUT-M5 HEX BLK
31	1	1-36641A	WASHER SPHERICAL M6 D
32	1	1-36141A	WASHER SPHERICAL M6 C
33	1	EAM0140G21A	BUSHING THREADED

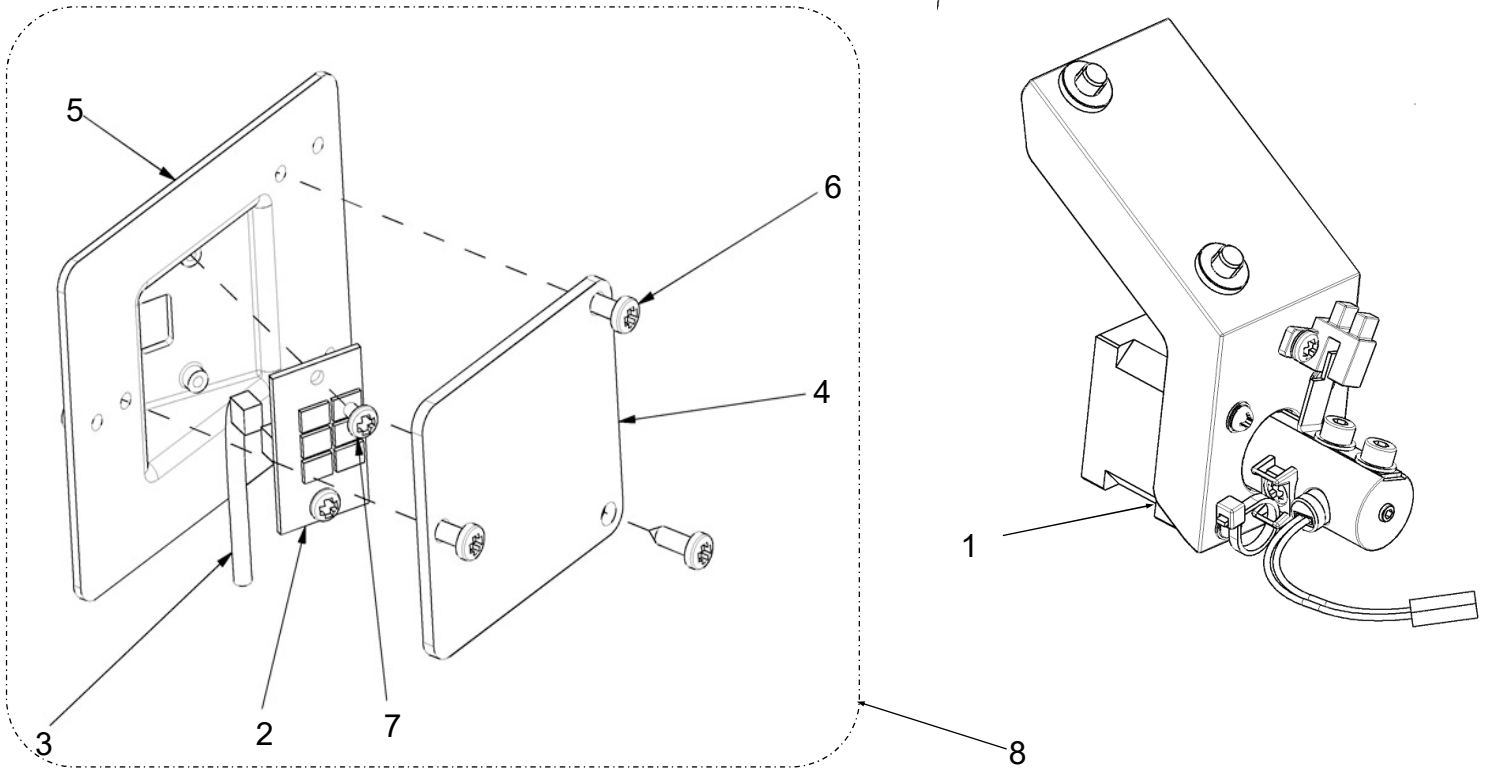









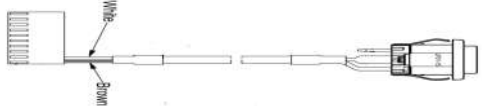
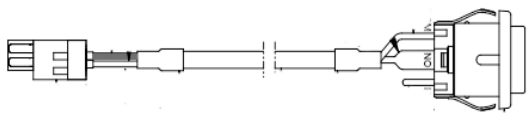
REF#	QTY	PART NUMBER	DESCRIPTION
1	1	EAM0003J69A	CONE (3.42 - 5.25)
2	1	EAM0005D25A	CONE 71-99MM/2.8-3.9IN
3	1	EAM0005D24A	CONE 96-114MM/3.8-4IN
4	1	EAM0005D23A	CONE (1.70 - 3.15)
5	1	EAC0058D07A	CUP-PRESSURE,HAWEKA
6	1	EAC0058D08A	DISK PRESSURE
7	1	EAA0263G66A	QUICK NUT KIT
7A	2	7409019-020	CLAMP JAWS SET
7B	2	1611128	DISC, SPRING
7C	2	ST0027000	COVER
7D	2	ST7417071	SCREW
7E	2	ST0027008	HANDLE
7F	2	ST7205389	SCREW, HANDLE
7G	3	ST0027005	SPACER
7H	1	ST7022499	C - CLIP
78	1	EAM0005D40A	CALIBRATION WEIGHT
79	1	EAM0021D90A	40 MM STUB SHAF
N/S	1	WWPR13A	PLIER WEIGHT SNAPON
14	1	EAC0058D15A	RUBBER RING
15	1	EAA0263G79A	QUICK NUT KIT



REF	QTY	PARTS NUMBER	DESCRIPTION
1	1	1-16661A	SPACER M4x45
2	1	2-01429A	CAPACITOR - 10uF, 400V
3	1	2-01529A	CAPACITOR - 20uF, 400V
4	1	2-63348A	CONNECTOR AC OUTLET
5	2	1-18359A	THREADED INSERT M8x1,25
6	6	1-5547	WASHER-LOCK, EXT, M4
7	1	EAL0341J98A	LABEL-BALANCER WARNINGS, EBOX
8	1	EAC0087G52A	MEMORY CARD
9	1	2-68948A	POWER ENTRY MODULE
10	1	8-23762A	LABEL - EARTH SYMBOL
11	2	2-21251A	FUSE-TIME DELAY, 250V, 6.3 AMP
12	7	1-19804	SCREW, PHIL PAN HEAD M4x6 *
13	2	1-11103	M3 X 10mm FLAT HEAD SCREW
14	1	EAP0276G80A1	L.E. VIDEO INTEGRATED
15	1	EAA0369J63A	FRAME ASSY FOR L. E. VIDEO IBP
16	1	EAS2128J74A	COVER FOR L.E. VIDEO
17	1	EAL0349G44A	FUSES CAUTION
18	3	2-31001A	TERMINAL - QUICK CONNECT
19	1	EAW0233J06A	CABLE - IEC, JUMPER
20	1	EAW0240G79A	MAIN CORD
21	2	EAW0243P22A	LINK WIRE BROWN
22	2	EAW0243P23A	LINK WIRE BLUE
23	1	2-13258A	MAIN SWITCH
24	4	EAA0458G39AC	CR QR LE VIDEO INTERGRATED TCH



REF	QTY	PART NUMBER	DESCRIPTION
1	1	EAA0394G93A	WEIGHT LASER KIT ASSY
2	1	EAP0290G30A	LED LAMP BOARD
3	1	EAW0282G98A	LED LAMP CABLE
4	1	EAM0093G67A	LED WINDOW
5	1	EAC0103G85A	LED LIGHTING SUPPORT
6	3	1-22623A	9X13 SELF TAP SCREW
7	2	1-13026A	3X6 SCREW
8	1	EAA0393G87A	LED LAMP ASSY

IMAGE	PART NUMBER	DESCRIPTION
	EAW0233J07A	HARNESS-WIRING, TRANSFORMER
	EAW0283J12A	SWITCH ON LED CABLE
	EAW0233J08B	CABLE-SWITCH ASSEMBLY 47.5"
	EAW0283G77A	CABLE SONAR SENSOR
	EAW0283G76A	CABLE IIC SONAR
	EAW0283G01A	CABLE WITH STOP PUSH BUTTON CURRENTLY USED
	EAW0283G70A	CABLE WITH STOP PUSH BUTTON USED FROM 12/2017 TO 3/16/2018

# ***JohnBean***

Notice: The information contained in this document is subject to change without notice. Snap-on Equipment makes no warranty with regard to this material. Snap-on Equipment shall not be liable for errors contained herein or for incidental consequential damages in connection with furnishings, performance, or use of this material.

This document contains proprietary information which is protected by copyright and patents. All rights are reserved. no part of this document may be photocopied, reproduced, or translated without prior written consent

Snap-on Equipment  
309 Exchange Ave.  
Conway, Ar 72032  
501-450-1500