

JohnBean®

B800P

PARTS MANUAL



**AUTOMATIC WHEEL BALANCER
WITH TOUCHSCREEN
EEAB569AP230, EEWB569AP**

Table Of Contents

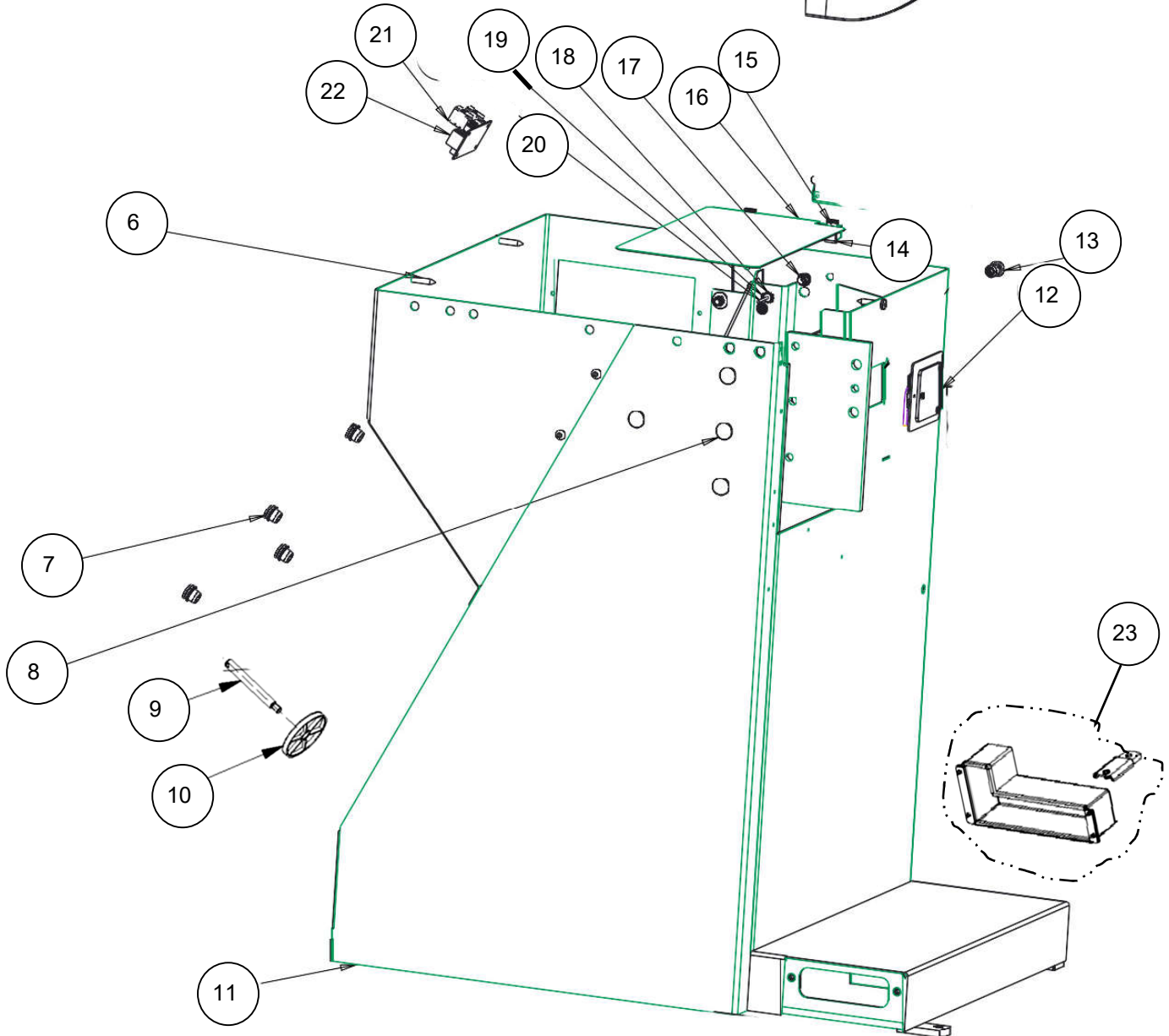
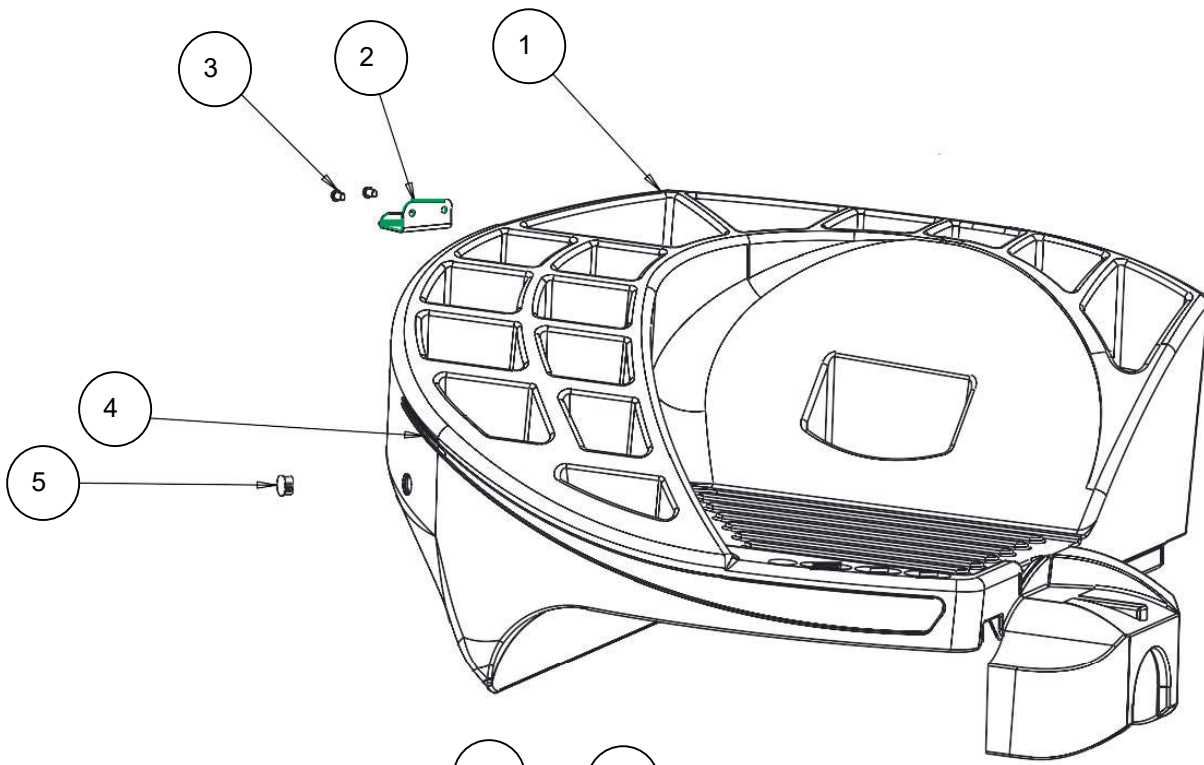
Build of Materials	3
Cabinet Assembly	4
Back pack Assembly	6
Monitor and Tower Assembly	8
Brake Pedal Assembly (cable type)	10
Brake Pedal Assembly (mechanical type)	12
Distance Gauge Assembly	14
IPB Box Assembly	15
Vibratory Assembly	17
Hood with Sonar Assembly	19
Clamping Devise Assembly with Accessories	20
Wiring Harness	22

EEWB569AP230 BOM

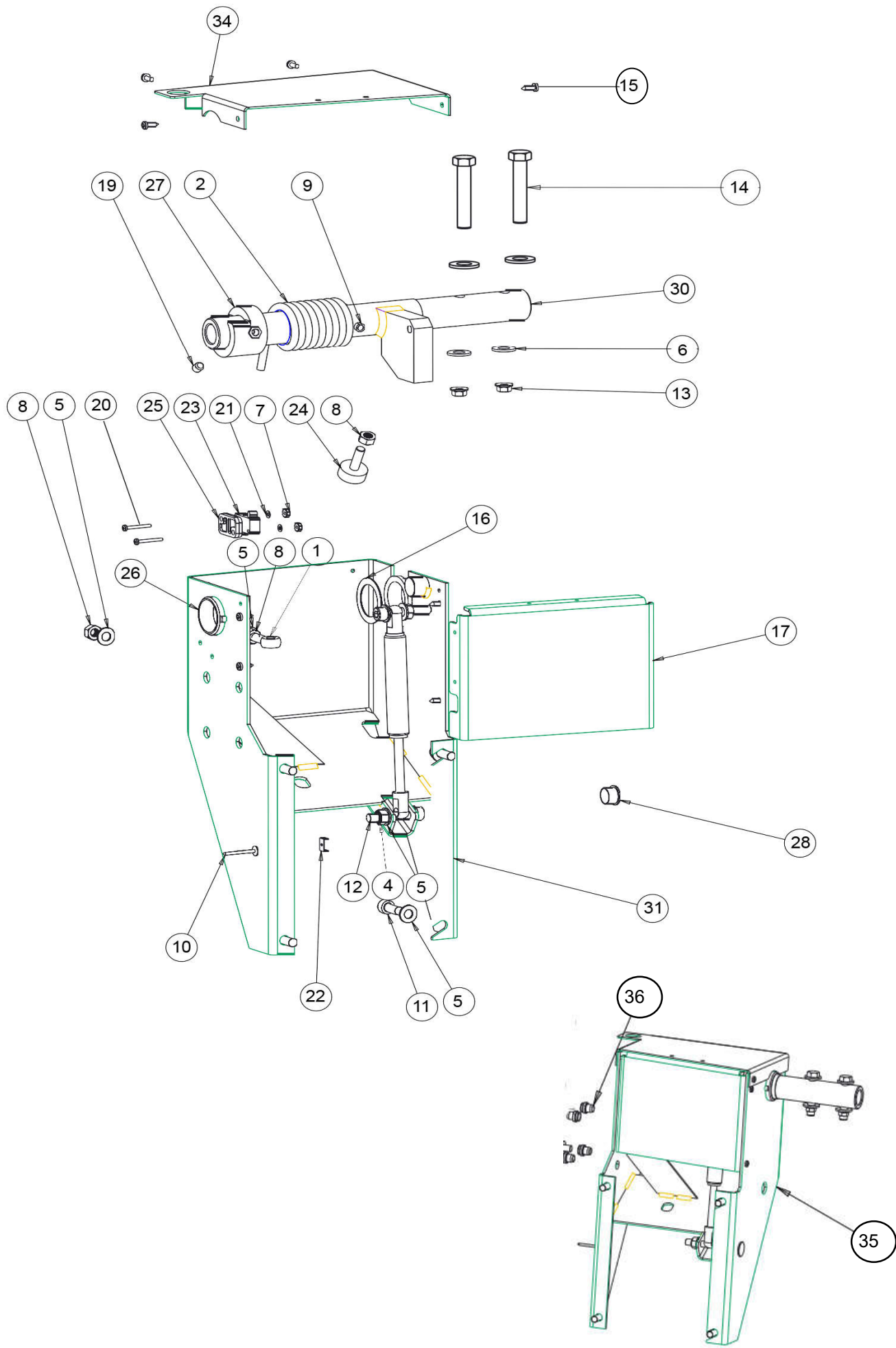
PART NUMBER	DESCRIPTION
EAK0309J30A	CR MONT 19IN W/TOUCHSCR UL-KIT
EAA0369J66A	HOOD ASSY-WITH SONAR
EAW0290J26A	POWER CABLE-5 METERS
ZEEWB569AU9	TECHNICAL DOCUMENTATION JB B800
EAX0039J01A	CORD POWER, 230V
89209000	CORD-POWER ADAPTER 12
EAC0058D68A	SPACER, 29660
EAA0283D11A	CLAMPNG DEVICE.FOR P-V-4028574
EAM0003J69A	CONE (3.42 - 5.25)
EAL0420J49A	MODEL DECAL B800P
EAL0341J63A	LABEL-PATENT
EAL0341J56A	LABEL-LASER
EAL0420J33A	LABEL-CAUTION MAX WHEEL DIA
EAC0105J41A	NAMEPLATE-JOHN BEAN TM
EAL0341J70A	LABEL-LASER APERTURE
EAL0341J71A	LABEL-CFR CERTIFICATION
EAL0392J89A	LABEL-CUST SVC JBC
EAL0341J96A	LABEL-BALANCER WARNING REAR
EAL0341J97A	LABEL-BALANCER WARNING SIDE
EAL0343J76B	SERIAL LABEL DOCUMENT
EAA0307G54A	ACCY KIT-PWR CLAMP
EAM0005D40A	CALIBRATION WEIGH
EAK0309J28A	KIT - 4 CONE
EAC0060G02A	FLANGE-COVER, ACCESSOR
EAM0006G01A	HOOK-ACCESSORY STORAGE
00058839000	TOOL-PDQ WEIGH

EEWB569AP115 BOM

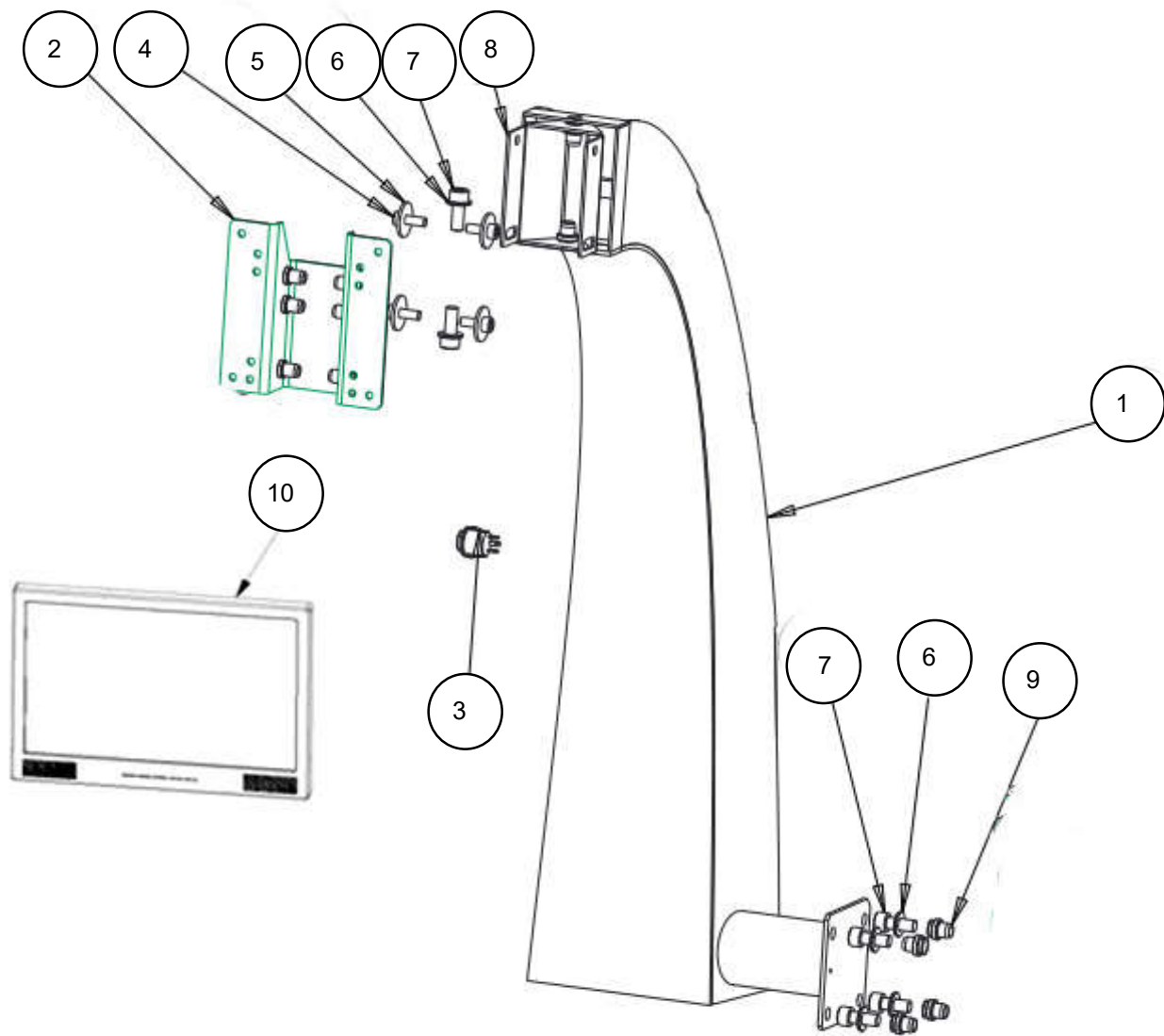
PART NUMBER	DESCRIPTION
7-16201A	TRANSFORMER-500 VVA
EAW0233J07A	HARNESS-WIRING, TRANSFORMER
EAW0290J26A	POWER CABLE-5 METERS



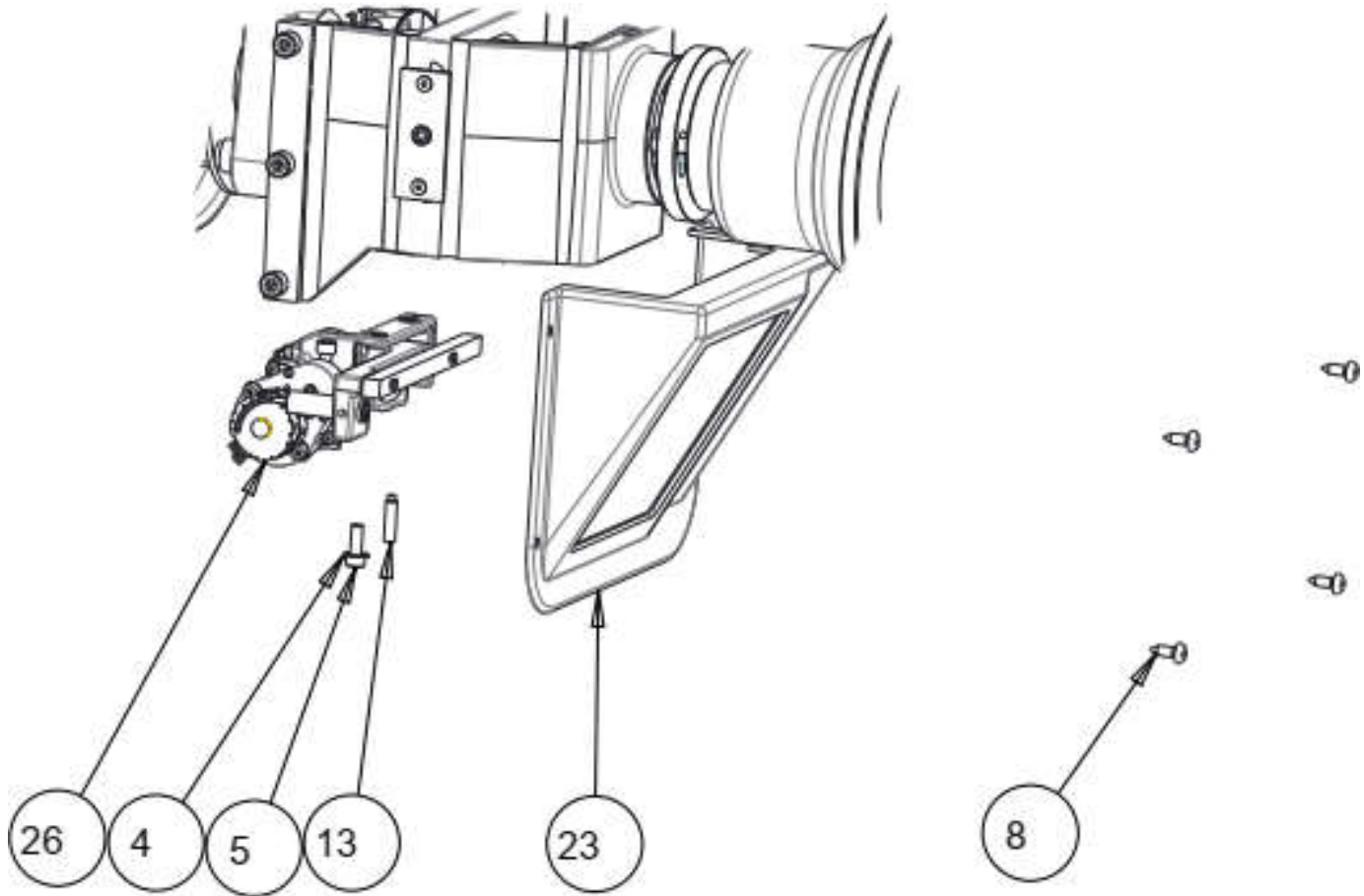
REF#	QTY	PART NUMBER	DESCRIPTION
1	1	EAM0091G89A	WEIGHT TRAY
2	1	EAS2128J63A	HOLDER WIDTH CALIPER (USED THRU 10/2021)
3	2	1-54609A	SCREW M6 x 10mm (USED THRU 10/2021)
4	1	EAC0103G55A	CHROME PLATED PLASTIC BAR (USED THRU 10/2021)
5	1	1-03776A	PLUG DOME (USED THRU 6/2018)
6	3	1-03725A	SCREW-PH SELF TAP M6.3X32 PHIL
7	4	1-17659A	THREADED INSERT M10X22
8	4	8-7216	PLUG-HOLE, 16MM DIA
9	4	EAM0006G01A	FLANGE HOLDER PIN
10	4	EAC0060G02A	FLANGES PROTECTION
11	1	EAA0423J45A	BALANCER CABINET MEDIUM RED
12	1	EAA0393G87A	LED LAMP ASSY
13	1	1-18359A	NUTSERT-M8 X 1.25
14	2	1-07439A	NUT-TINNERMAN 1/4-20
15	2	1-2509	SCREW-BHCS 1/4-20 X 5/8
16	1	EAS2128J67A	SHIELD-FIRE
17	3	1-18359A	NUTSERT-M8 X 1.25 (USED THRU 4/2023)
18	2	1-1548	WASHER-EXT,SHAKEPROOF 6MM
19	1	2-23201	TERMINAL-LUG POP RIVET
20	1	1-7558	POP RIVET-3/16"
21	1	EAP0290G40A	INTERFACE BOARD FOR IBP2
22	1	2-30348	CONNECTOR WAGO 733-102 FEMALE
23	1	EAA0508G88A	ASSY COVER FOR M CABINET



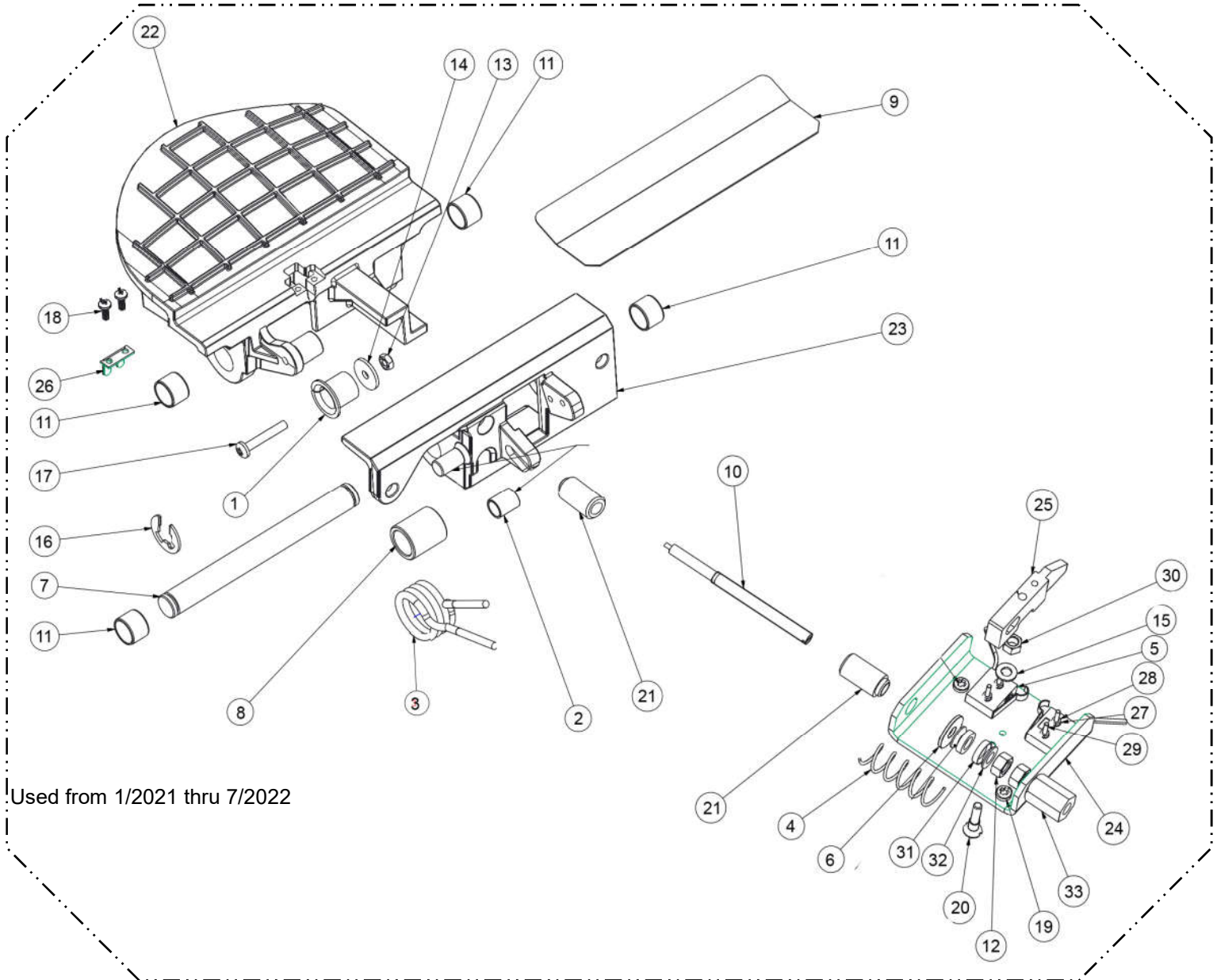
REF#	QTY	PART NUMBER	DESCRIPTION
1	1	1-01530	EYEBOLT-M8 X 50
2	1	1-04267A	SPRING-TORSION (1614017)
3	1	1-06769A	QR GAS SPRING COMPRESSION
4	2	1-10033	NUT-ESNA M8
5	10	1-10041	WASHER, PLAIN M8
6	4	1-10141	+WASHER-PLAIN DIN 125A
7	2	1-15033	NUT-KEPS M3-.5
8	4	1-15933A	NUT-HEX 8M-1.25
9	1	1-12452	PIN-M8 X 45
10	2	1-7558	RIVET
11	4	1-17709	BOLT-M8 X 1.29 X 20MM
12	2	1-18209	SHCS-M8 X 45
13	2	1-8133	NUT-KEPS 3/8-16
14	2	1-1101	SCREW HHCS 3/8 16 X 2
15	1	1-12624A	SCREW-HEX HD M4X.39 THRD FORMING
16	1	1-22441A	SHIM RING- 32 X 45 X 1
17	8	EAS2177G41AC	BACKPACK FRONT COVER
19	1	1-47810	SCREW SET M8 X 8MM FLAT PT
20	2	1-02307A	SCREW-PHMS M3 X 25MM
21	2	1-9541	WASHER-FLAT M3 DIN 125A
22	1	2-23201	TERMINAL-LUG POP RIVET
23	1	EAW0233J08B	CABLE-SWITCH ASSEMBLY 47.5"
24	1	8-15218A	BUMPER M8X40 NEOPRENE
25	1	EAC0053J16A	MICRO SWITCH PLATE
26	2	EAC0058D36A	BUSHING-D132MM (1324032)
27	1	EAC0058D38A	SWITCH SEGMENT (1631040)
28	1	8-7216	PLUG-HOLE 16MM
30	1	EAM0084J39A	SHAFT STOPBLOCK WLDMT
31	1	EAS2128J49A	ASSY BACKPACK 42 IN
34	1	EAS2128J54A	SUPPORT WHEELGUARD COVER
35	1	EAA0369J65A	WHEELGUARD SUPPORT ASSY 42 IN
36	4	1-18359A	THREADED INSERT M8X1,25



REF#	QTY	PART NUMBER	DESCRIPTION
1	1	EAS2258G73A	MONITOR SUPPORT NA
2	1	EAA0345G43AC	ASSY VESA SUPPORT
3	1	EAW0283G70A EAW0283G01A	CABLE WITH STOP PUSH BUTTON USED UP TO 3/15/2023 CABLE WITH STOP PUSH BUTTON USED AFTER 3/15/2023
4	4	1-16309	SCREW - SHCS M6 X 16MM
5	6	1-22941A	WASHER M6 6.5MM IDX24MM OD
6	6	1-10041	WASHER D.8 UNI6592-69/DIN125
7	1	1-17709	SCREW - SHCS M8 X 20MM
8	1	EAS2128J83A	MONITOR SUPPORT VERSA MOUNT
9	1	1-18359A	NUTSERT-M8 X 1.25
10	1	EAK0309J30A	MONT 19IN W/TOUCHSCR UL-KIT
INCL	1	3-08108A	MONITOR 19IN RESISTIVE TOUC
INCL	4	1-54310A	SCREW SET M4X20 FLT
INCL	4	1-13533A	NUT BARB M4 (EXT WASHER)
INCL	1	EAL0452J15A	MASK-NAME LCD



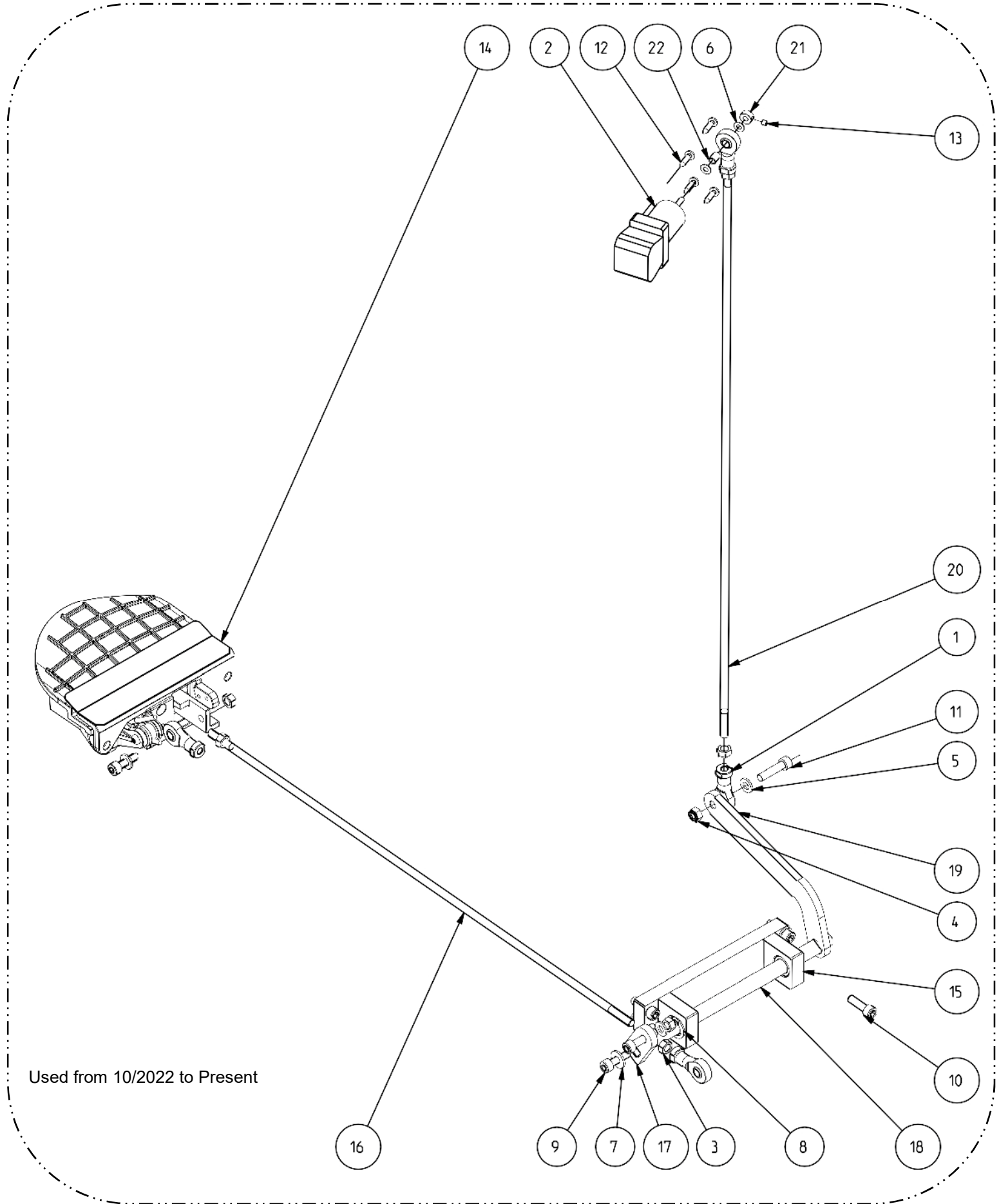
REF#	QTY	PART NUMBER	DESCRIPTION
4	2	1-1548	WASHER-EXT,SHAKEPROOF 6MM
5	3	1-16309	SCREW - SHCS, M6 X 16mm,
8	4	1-22323A	SCREW,S/T.PAN,5.5x15mm BLK.
13	1	1-49810A	SET SCREW, M6x25 HEX SOCKET W/CUP
23	1	EAA0357G43A	INSIDE SCANNER COVER
26	1	EAA0394G27A	INSIDE SCANNER (CCD & PROCESSOR BOARD)
N/S	1	6-01429A	FFC CABLE 720mm 18 CON XXX (SCANNER)



Used from 1/2021 thru 7/2022

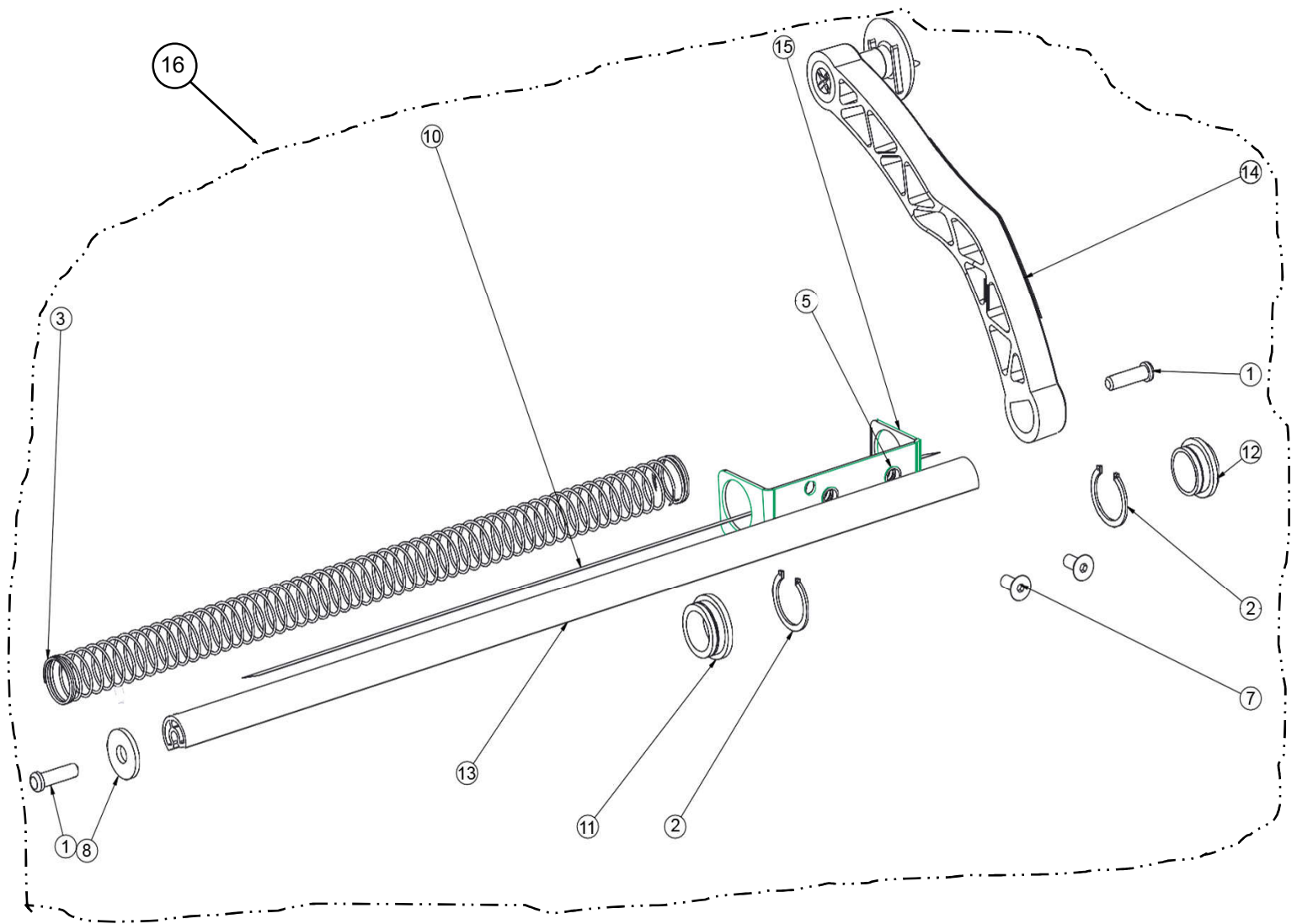
34

REF#	QTY	PART NUMBER	DESCRIPTION
1	2	EAM0181G49A	BUSHING DBLE SHOULDER 12X14X15
2	2	EAM0181G04A	SPACER WITH FLANGE 8.4
3	1	EAM0048G78A	QR SPRNG PDL SWITCH(0016103)
4	1	1-12068A	SPRING COMPRESSION
5	1	2-07661A	MICRO SWITCH-25709 (H4402111)
6	1	1-20041A	WASHER - FLAT M6.4X18X1.6
7	1	EAM0046G39A	PIN PEDAL
8	1	EAM0051G96A	BUSHING CENT SPRING BR-0031787
9	1	EAL0443G72A	PEDAL PROTECTION ADHISIVE
10	1	EAA0344G15A	QR CABLE-BRAKE PEDAL 0032324
11	1	1-10165A	BUSHING SELF TP 1210-P10 34711
12	1	1-11633	NUT M6 X 5, 2MM THK BLK
13	1	1-11433	NUT-M4 HEX DIN 934
14	1	1-22741A	WASHER PLAIN 7021122
15	1	1-36741A	SHIM RING
16	1	1-18477A	RETAINING RING(ST7022039)
17	1	1-26506A	SCREW-PHMS M4 X 25
18	1	1-20504A	SCREW-TCB CROSS 3X7
19	1	1-22623A	SCREW-PH PN H TAP 3.9X13 A2J C
20	1	EAM0153G23A	PIN ACTUATOR POWER CLAMP
21	1	EAM0103G42A	SPACER FOR BRAKE CABLE
22	1	EAM0122G48A	PEDAL MACHINED UL-22305
23	2	EAM0181G72A	SUPPORT BRAKE PEDAL
24	1	EAS2128J78A	MICROSWITCH SUPPORT
25	1	EAM0153G24A	ACTUATOR POWER CLAMP
26	1	EAS2128J75A	CABLE STOP
27	1	1-1048	WASHER-EXT M2 SHAKEPROOF
28	1	1-11033	NUT-M2 HEX
29	1	1-36606A	SCREW-PHIL PAN M2-16
30	1	1-11533A	NUT-M5 HEX BLK
31	1	1-36641A	WASHER SPHERICAL M6 D
32	1	1-36141A	WASHER SPHERICAL M6 C
33	1	EAM0140G21A	BUSHING THREADED
34	1	EAA0409G98AC	ALU BRAKE PEDAL 2 SWT UL VER

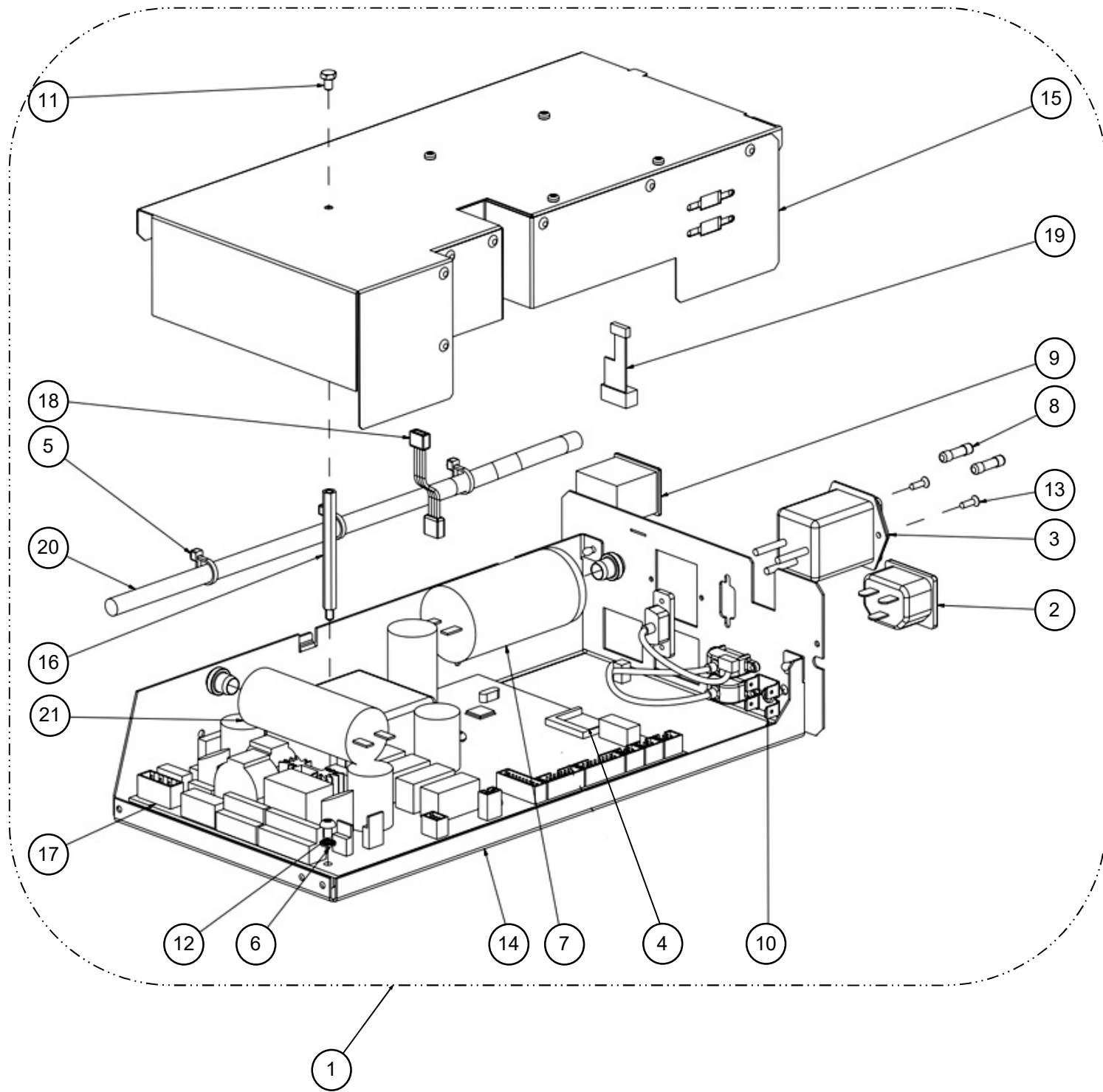


Used from 10/2022 to Present

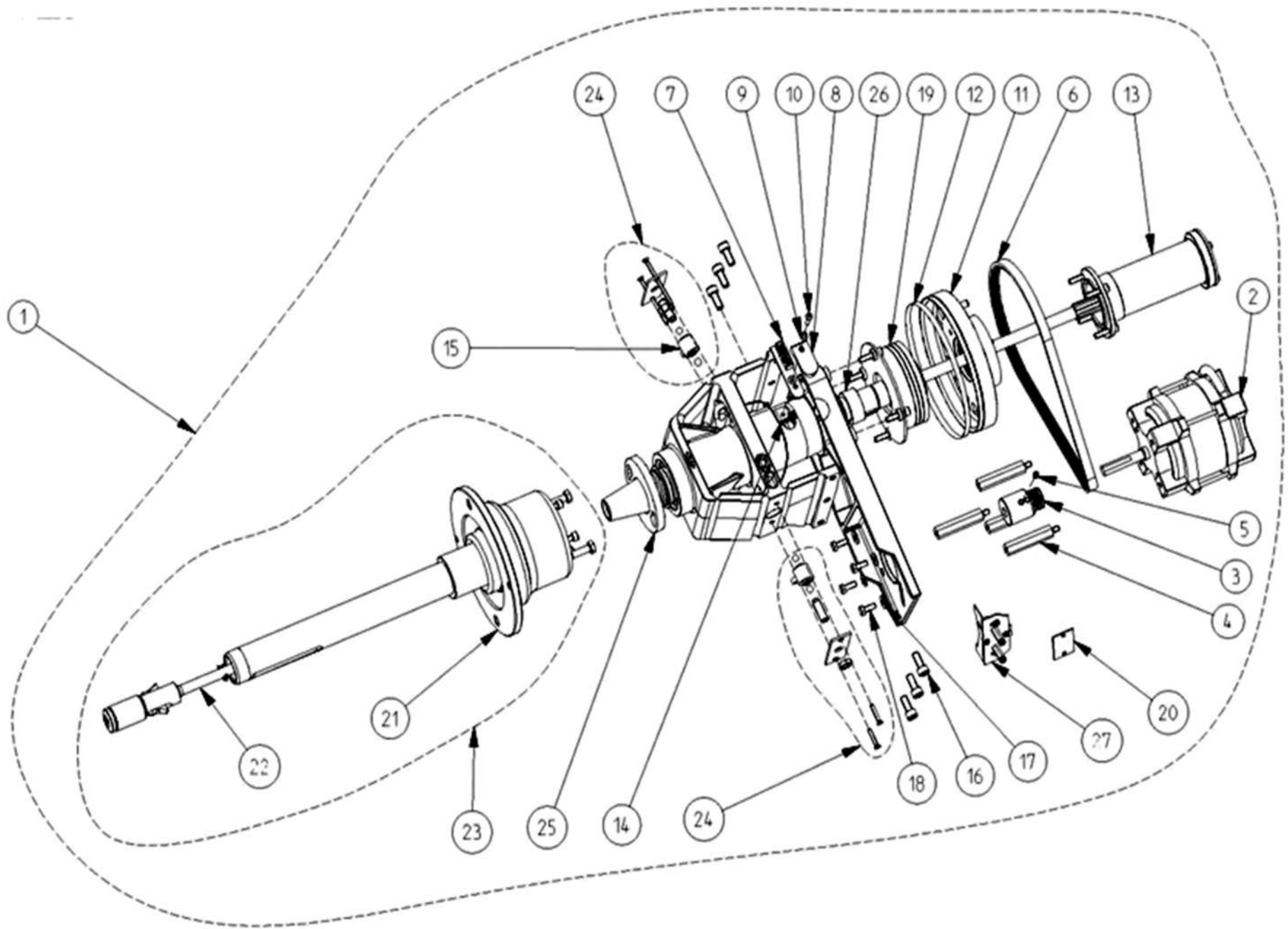
REF#	QTY	PART NUMBER	DESCRIPTION
1	1	1-11963A	ROD END SELF LUBRICATING
2	1	2-13658A	JOYSTICK, 2 POSITIONS, 48MM SH
3	1	1-11633A	NUT-M6 X 5.2 BLK
4	1	1-9933	NUT-M6 ZINC 7020339
5	1	1-9841	WASHER-PLAIN 6MM/SAME AS4-6641
6	1	1-9641	WASHER PLAIN -7021232/1641040
7	1	1-16641	WASHER-FLAT M6
8	1	1-18477A	RETAINING RING(ST7022039)
9	1	1-16409	ALLEN SCREW, M6 X 20
10	1	1-16409A	SCREW TCEI 6 X 20 8G
11	1	1-16509A1	SCREW - ALLEN 6X25 8G
12	1	1-18023A	SELF TAPPING M4.2X16 PNH
13	1	1-38610	SCREW-SET M4 X 7MM X 4MM CP PT
14	1	EAA0503G89A	ALU BRAKE PDEAL UL VERSION
incl	1	EAM0048G78A	QR SPRNG PDL SWITCH(0016103)
incl	1	EAM0046G39A	PIN PEDAL
incl	1	EAM0051G96A	BUSHING CENT SPRINGBR-0031787
incl	4	1-10165A	BUSHING SELF TP 1210-P10 34711
incl	1	1-11433	NUT-M4 HEX DIN 934
incl	1	1-22741A	WASHER PLAIN 7021122
incl	2	1-18477A	RETAINING RING(ST7022039)
incl	1	1-26506A	SCREW-PHMS M4 X 25
incl	1	1-20203A	SCREW M3 X 8 FLAT HEAD
incl	1	EAL0443G72A	PEDAL PROTECTION ADHISIVE
incl	1	EAM0180G23A	PEDAL MACHINED UL
incl	1	EAM0181G04A	SPACER WITH FLANGE 8.4
incl	1	EAM0181G44A	SUPPORT BRAKE PEDAL FINISHED
incl	1	EAM0181G49A	BUSHING DBLE SHOULDER 12X14X15
15	1	EAA0508G23B	SHAFT SUPPORT ASSY
incl	2	1-17365A	BUSHING BRONZE DIN 1850
incl	2	1-22052A	PIN-DOWEL (3 X 16 MM)7040219
incl	4	1-23603A	SCREW M6 X 20 COUNTERSINK
incl	2	EAM0209G70A	SHAFT SUPPORT
incl	1	EAM0209G71A	BASE SHAFT SUPPORT
16	1	EAM0179G21B	BAR PULLING LOW M CABINET
17	1	EAM0179G23B	PLATE SMALL LINKAGE
18	1	EAM0179G24A	BEARING SHAFT
19	1	EAM0179G25B	PLATE BIG LINKAGE
20	1	EAM0179G26B	BAR PULLING UPPER M CABINET
21	1	EAM0180G22B	CONNECTION JOYSTICK
22	1	EAM0181G82A	BUSHING JOYSTICK
23	1	EAA0503G90B	UL BRAKE PEDAL FOR M CABINET



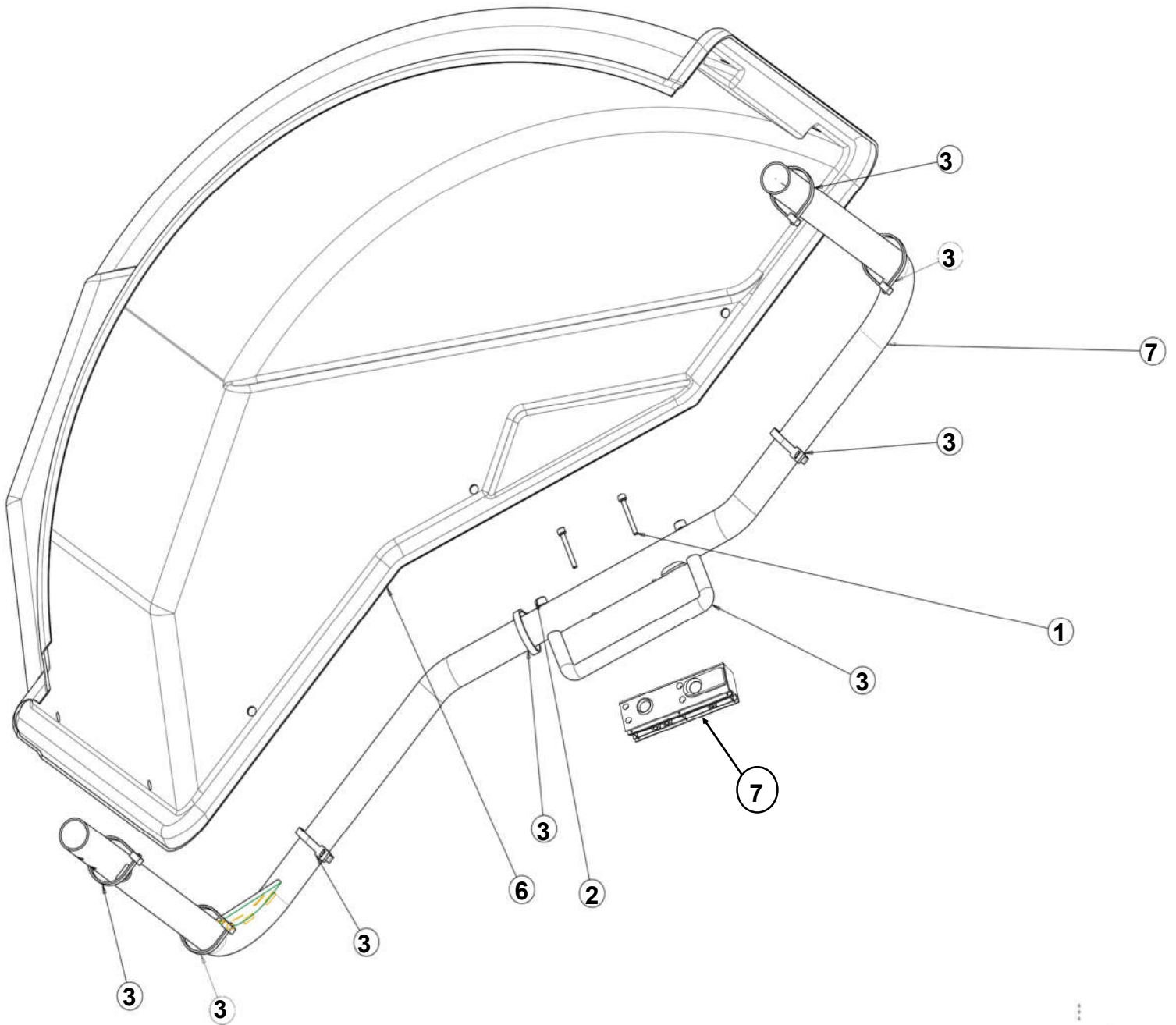
REF#	QTY	PART NUMBER	DESCRIPTION
1	1	1-3824	THREADFORMING SCREW C-M 6 X 12
2	1	1-4577	SNAP RING-25 X 1.20 DIN 471
3	1	1-10468A	SPRING COMP 1.2 X 22.9 X 480
5	1	1-17559A	NUTSERT M-6
7	1	1-27903A	SCREW-M6 X 14 FTHD PHIL
8	1	1-17841	WASHER-ZINC D8 X 24-7021102
10	1	EAL0349G31A	DECAL-DISTANCE SCALE (MM)
11	1	EAM0005D38A	BUSHING-INNER SAPE ROD
12	1	EAM0005D39A	BUSHING-OUTER SAPE ROD
13	1	EAM0053G08A	ROD-SAPE TRUCK
14	1	EAA0307G23A	SAPE ARM EURO NO EJECTOR
N/S	1	EAC0058D11A	DISK TOUCHING
N/S	1	EAC0054P01A	ARM-SAPE EURO (6419214)
N/S	1	1-3624	SCREW, 5 X 40MM, SELF TAP
15	1	EAS2128J18A	SUPPORT-CALIPER ROD
16	1	EAA0423J22A	SAPE B800



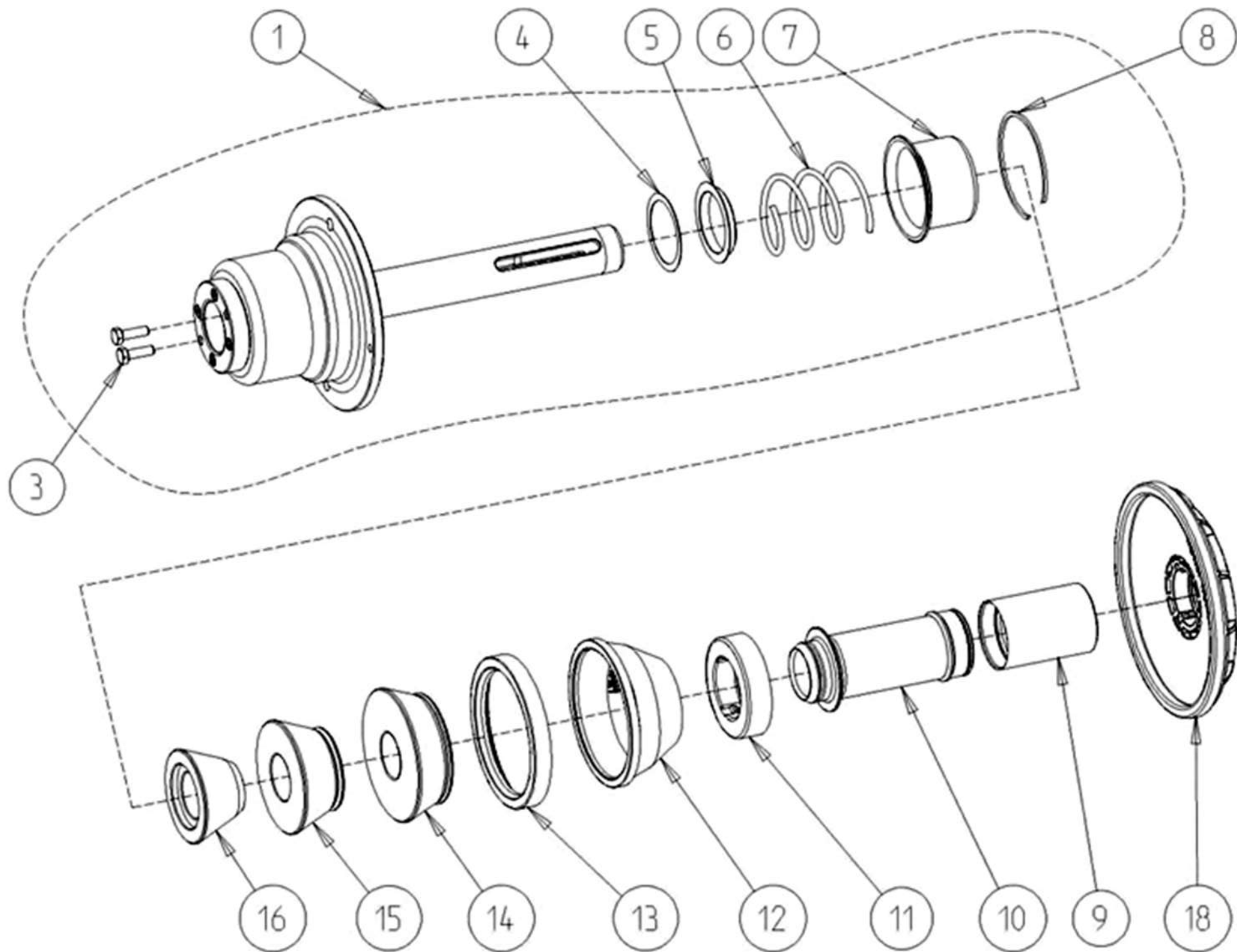
REF#	QTY	PART NUMBER	DESCRIPTION
1	1	EAA0556G14A	CR ASSY EBOX + EPC JBC
2	1	2-63348A	OUTLET IEC APPLIANCE
3	1	2-64948A	ENTRY FILTER POWER LINE CSA
4	1	3-20229A	SOFTWARE EPC FLAT GUI
5	3	5-845	TIE WRAP
6	6	1-5547	WASHER CONTACT WITH TEETH M4
7	1	2-01529A	CAPACITOR START 20UF 400V
8	2	2-21251A	FUSE-6.3 AMP 250VAC GS 28301
9	1	2-13258A	ROCKER SWITCH BLK
10	1	2-23201	TERMINAL-LUG POP RIVET
11	1	1-27101A	SCREW-M4 X 6 HHCS
12	6	1-19804	SCREW PHMS M4 X 6
13	2	1-23123A	SCREW PPH SELF 2.9 X 9.5 ZN
14	1	EAA0537G77A	ASSY FRAME FOR IBP + EPC
<i>incl</i>	2	1-18359A	NUTSERT-M8 X 1.25
<i>Incl</i>	1	1-14561A	SPACER-M4X10 NYL (36-25530-ND)
<i>Incl</i>	8	1-7861	SPACER 952-1537-ND
<i>incl</i>	1	EAS2269G21A	FRAME EBOX
15	1	EAA0537G78A	ASSY COVER EBOX
<i>incl</i>	1	3-09609A	PC EMBEDDED PCM3365E 1601E-T
<i>incl</i>	2	1-14661A	STANDOFF-HEX M-FMS 3 X 15
<i>incl</i>	2	1-14761A	STANDOFF-M3 X 14 F/F
<i>incl</i>	2	1-11233	NUT-HEX M3 DIN 934
<i>incl</i>	4	1-20504A	SCREW-TCB CROSS 3X7
<i>incl</i>	1	EAS2269G18A	COVER BOX
16	1	EAM0221G05A	SPACER M4x63 FASTENAL
17	1	EAP0290G00A	CR ASSY PCB IBP2 BALANCER BRD
18	1	EAW0287G76A	CABLE EPC SUPPLY
19	1	EAW0287G77A	CABLE EPC-IBP2 SERIAL COMM
20	1	EAW0287G79A	CABLE POWER DIST EPC
21	1	2-01429A	CAPACITOR-10UF 400V-25428





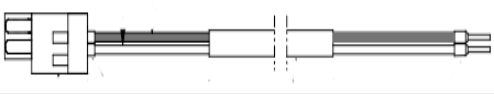
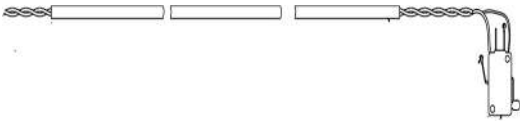
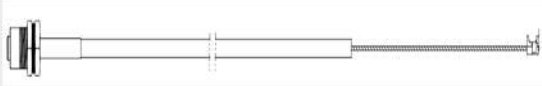
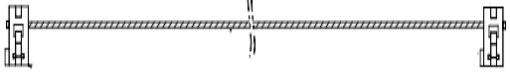
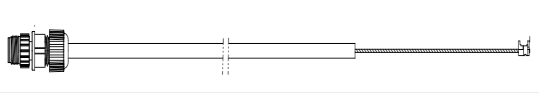
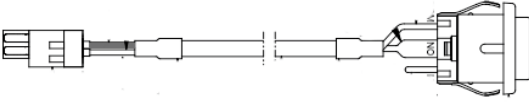
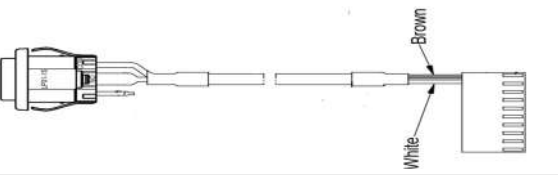
REF#	QTY	PART NUMBER	DESCRIPTION
1	1	EAA0392G39A	ALU UL MEASUREMENT UNIT
2	1	2-59366A	UL MOTOR INCL. CONNECTOR Y2K
3	1	EAM0005D08A	MOTOR PULLEY
4	4	EAM0061G82A	UNIT MOTOR SPACER
5	1	1-28410	SCREW
6	1	8-3531	BELT 5PJ711
7	1	EAA0344G00A	OPTO-ELECTRONIC UNIT
8	1	EAC0094G11A	ENCODER BOARD PROTECTION
9	1	1-9641	WASHER
10	1	1-35006A	SCREW
11	1	EAM0021D18A	MOTOR PULLEY
12	1	EAM0005D64A	ENCODER BAR CODE
13	1	EAA0307G36A	REPLACEMENT KIT "P"
14	1	EAW0240G67A	CABLE WITHOUT TEMP. SENSOR
15	2	EAA0260D59A	TRANSDUCER
16	6	1-17709	SCREW TCEI 8X20 8G
17	4	1-16641	WASHER PLAIN
18	4	1-46701A	HEX HEAD SCREW
19	1	EAA0383G85A	BRAKE DISC REPAIR KIT
20	1	EAP0201D20A	ENCODER BOARD COMPLETE
21	1	EAA0382G01A	POWER CLAMP FLANGE L
22	1	EAA0382G02A	PULL-SHAFT COMPLETE L
23	1	EAA0384G71A	P-CLAMP FLANGE COMPLETE
24	1	EAA0328G16A	TRANSDUCER FIXING UNIT
		8-1144	STEEL BALL 8 M
		1-6568	COMPRESSION SPRING 1.6 X 10 X 58.5
		EAM0005D07A	SETSCREW HEX SOCKET M10X1X29
		1-04634A	NUT HEX LOW M10X1 8-A2J ISO 8675 EN 28675
		1-17403	SCREW HEX SOCKET COUNT.H M4X25 8.8-A2J
		1-19903A	SCREW HEX SOCKET COUNT.H M4X65 8.8-A2J
		1-11833	HEXAGON NUT B M10 X 1 -8-A2J
25	1	EAA0307G37A	BAYONET FITTING
26	1	EAM0051G25A	POWER CLAMP SPACER RING
27	1	EAK0329G15A	BOARD SUPPORT KIT



REF#	QTY	PART NUMBER	DESCRIPTION
1	1	1-15509	SCREW HSCS M5X40 ZN
2	1	1-18209	SHCS-M8 X 45
3	1	5-03345A	TIE-CABLE BLACK 14.5"
4	1	8-09233A	PLASTIC HANDLE-26784
5	1	EAC0100G21A	HOOD 42 IN
6	2	EAM0076G34A	WHEEL GUARD PIPE L.E. VIDEO
7	1	EAA0373G96A	ASSY SONAR BOX MID RANGE VIDEO
N/S	1	EAW0283G77A	SONAR SENSOR CABLE MID RANGE VIDEO
N/S	1	EAW0283G76A	SONAR EXTENSION CABLE



REF#	QTY	PART NUMBER	DESCRIPTION
1	1	EAA0382G01A	FLANGE FOR POWER CLAMP
3	2	1-32701A1	SCREW, HEX HEAD M8X25 *
4	1	1-18241A	RETAINING DISC
5	1	EAC0058D14A	SPRING CENTERING RING
6	1	1-07768A	COMPRESSION SPRING
7	1	EAS2025D14A	SPRING CASE SPRING CASE
8	1	1-13077	CIRCLIP SB 92
9	1	EAC0058D69A	PROTECTION SLEEVE LONG
10	1	EAM0086G86A	CLAMPING SLEEVE P-VERSION L
11	1	EAC0058D08A	PRESSURE RING
12	1	EAC0058D07A	PRESSURE CUP
13	1	EAC0058D15A	RUBBER PROTECTION RING
14	1	EAM0005D25A	CONE 4 ECON D.40
15	1	EAM0005D24A	CONE 2 ECON D.40
16	1	EAM0005D23A	CONE 1 DIA. 42-80 MM, FOR 40 MM SHAFT
18	1	8-02040A2	PRESSURE CUP
N/S	1	110410000	REPLACEMENT RING
N/S	1	EAM0003J69A	CONE (3.42 - 5.25)

IMAGE	PART NUMBER	DESCRIPTION
	EAW0233J07A	HARNESS-WIRING, TRANSFORMER
	6-01429A	SCANNER CABLE-FFC 720MM 18 G PLT CON
	EAW0283J12A	SWITCH ON LED CABLE
	EAW0233J08B	CABLE-SWITCH ASSEMBLY 47.5"
	EAW0283G83A	CABLE SONAR SENSOR EXT B1200P
	EAW0283G11A	IBP2 INTERFACE CABLE
	EAW0283G82A	CABLE IIC SONAR B1200P
	EAW0283G70A	CABLE WITH STOP PUSH BUTTON
	EAW0283G01A	CABLE WITH STOP PUSH BUTTON



B800P

Snap-on Equipment
309 Exchange Ave.
Conway, Ar 72032
501-450-1500

Notice: The information contained in this document is subject to change without notice. Snap-on Equipment makes no warranty with regard to this material. Snap-on Equipment shall not be liable for errors contained herein or for incidental consequential damages in connection with furnishings, performance, or use of this material. This document contains proprietary information which is protected by copyright and patents. All rights are reserved. no part of this document may be photocopied, reproduced, or translated without prior written consent

For Parts And Service Call Snap-on Equipment 1.800.225.5786

PARTS MANUAL