

Spare Parts Pieces de Rechange Tabla de repuestos

JohnBean™



B340

FAMILY <i>B340</i>	NAME	DESCRIPTION
	<i>B340L</i>	Laser pointer indication
	<i>B340P</i>	Power clamp system
	<i>B340S</i>	Sonar system

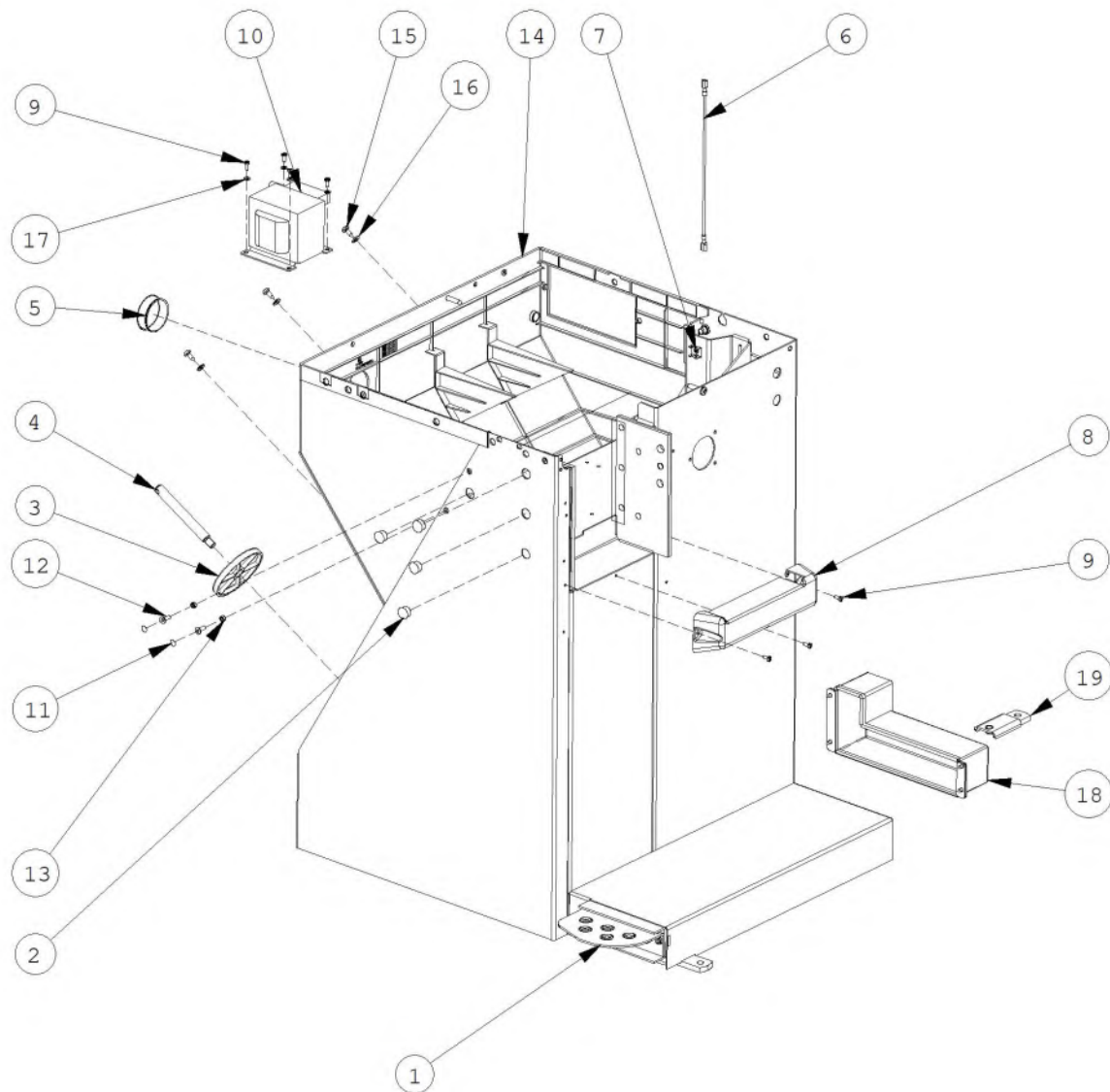
- **(GB)**: in a given list, components sharing the same letter (A,B,C...), in the “Note” column are compatible.
- **(FR)**: dans une table, les composants qui présentent la même lettre (A,B,C...) dans la colonne “Note”, sont compatibles.
- **(DE)**: Die in einer Tabelle aufgeführten Komponenten, die in der Spalte “Anmerkung” mit demselben Buchstaben (A,B, C...) gekennzeichnet sind, sind kompatibel.
- **(RU)**: В данном списке компоненты с одинаковыми буквами (A, B, C) в графе “Примечания” совместимы.
- **(IT)**: all'interno di una tabella, i componenti che presentano la medesima lettera (A,B,C...) nella colonna “Nota”, sono compatibili.
- **(ES)**: dentro de una tabla, los componentes de la columna “Nota” que poseen la misma letra (A, B, C...) son compatibles.
- **(PT)**: em uma determinada tabela, os componentes que apresentarem a mesma letra (A,B,C...) na coluna “Nota”, são compatíveis.]

INDEX		Page
EAZ0070G62A_B	CABINET	4
EAZ0090G83A_D	WEIGHT TRAY AND MONITOR	7
EAZ0070G57A_B	WHEEL GUARD SUPPORT	9
EAZ0137G63A_A	BACK-PACK WITH CABLE	12
EAZ0136G42A_A	SAPE 2D ASSEMBLY	15
EAZ0070G64A_1	ALU VIBRATORY SYSTEM INT.FLANGE	18
EAZ0033G88A_C	VIBRATORY SYSTEM	21
EAZ0070G58A_A2	LASER POINTER	24
EAZ0070G61A_B	WHEELGUARD AND SONAR	26
EAZ0088G23A	PEDAL ASSEMBLY	28
EAZ0033G99A_B	PEDAL P-CLAMP	30
EAZ0089G37A_E	PEDAL P-CLAMP UL	32
EAZ0144G33A_A	BRAKE PEDAL M2 CABINET	34
EAZ0090G85A_C	POWER INLET ASSEMBLY	37
EAZ0088G16A_A1	MID-RANGE ACCESSORY BOX	40
EAZ0070G83A_1	POWER CLAMP ACCESSORIES	42
EEWB774ALWD_B1	WIRING DIAGRAM L VERSION	44
EEWB774ALWD_B2	WIRING DIAGRAM L VERSION	45
EEWB774APWD_B1	WIRING DIAGRAM P VERSION	46
EEWB774APWD_B2	WIRING DIAGRAM P VERSION	47
EEWB774AWD_B1	WIRING DIAGRAM S VERSION	48
EEWB774AWD_B2	WIRING DIAGRAM S VERSION	49

UPDATING GUIDE:

Dec. 21: EAZ0070G62A_A2 > B, EAZ0144G33A_A ADDED

EAZ0070G62A.B



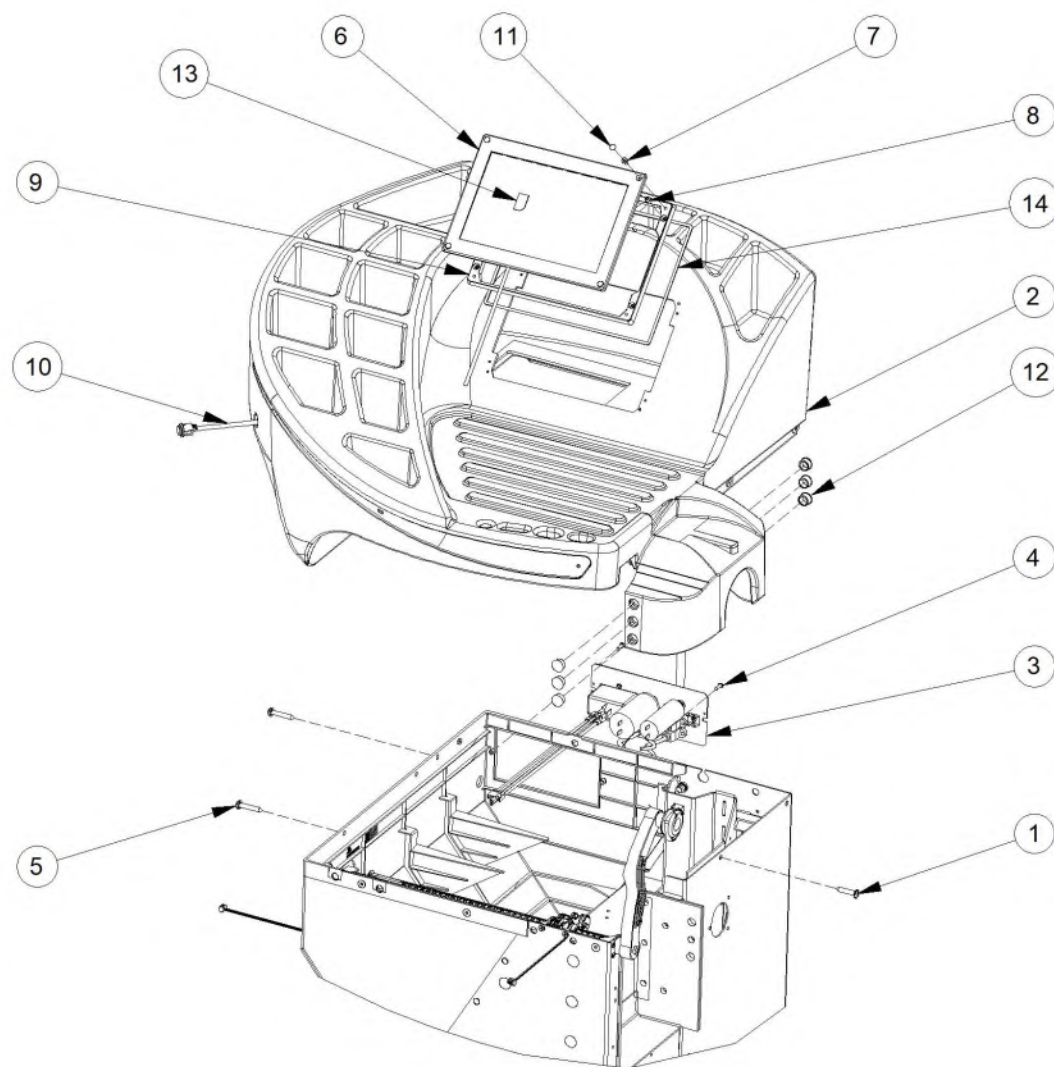
10/2021

Pos	Code	Designation	Désignation	Designacìon	N.	Note	Nota	A	B	C
1	EAA0332G26A	p version Pedal, 2 switch	Pédale de version "p", 2 contact	Pedal "p", 2 conmutador	1			X		X
1	EAA0263G07A	J-TYPE BRAKE PEDAL	GROUPE PEDALE FREIN J	GRUPO PEDAL FRENO J	1			X		X
1	EAA0372G98A	ALU BRAKE PEDAL 2 SWICTHES	PEDALE FREIN ALUMINIUM 2 MICRO	PEDAL FRENO ALUMINIO 2 MICRO	1			X		X
1	EAA0503G90A	UL BRAKE PEDAL FOR M CABINET	PEDALE FREIN CORPS MACHINE M	PEDAL FRENO CAJA M	1			X		
2	EAC0060G00A	VIBRATORY SYSTEM HOLES CUP	BOUCHON, GROUPE MESURE	TAPON-GRUPO MEDIDAS	4			X		
3	EAC0060G02A	FLANGES PROTECTION	PROTECTION FLASQUES	PROTECCIÓN BRIDAS	4				X	
4	EAM0006G01A	FLANGE HOLDER PIN	AXE PORTE-FLASQUES	PERNO PORTA BRIDAS	4			X		
5	1-10576A	BLACK COV. CAP FOR SHEETMETAL	BOUCHON HABIL. NOIR POUR TOLES	TAPÓN NEGRO DE COB. PARA CHAPAS	1			X		
6	EAW0265G40A	GROUNDING CONDUCTOR	CABLE TERRE	CABLE TIERRA	1			X		
7	2-23201	FLAT PLUG GROUNDING 4-POL.	CONNECTEUR PLAT TERRE	CONECTOR PLATO M/TIERRA	1			X		
8	EAM0062G50A	VIBRATORY SYST. COV BOTTOM	HABIL. INF.GROUPE MES. RAL9005	COBERTURA INF. GRUPO MIS. RAL9005	1			X		
8	EAC0100G60A	VIBRATORY SYST. COV BOTTOM	HABIL. INFER. GROUPE MES.	COBERT. INF. GRUPO MIS.	1				X	
9	1-22623A	SCREW, PHIL PAN H.TAPP.	VIS AUTOTAR.	TORNILLO AUTORR.	7				X	
10	7-00902A	Insulating transformer 100/230V	TRANSFORMATEUR 100/230V	Transformador 100/230V	1			X		
10	7-01802A	Insulating transformer	TRANSFORMATEUR	Transformador	1			X		
10	EAA0373G90A	Insulating transformer 230/230V	TRANSFORMATEUR 230/230V	Transformador 230/230V	1			X		
10	EAA0373G92A	Insulating transformer 100/230V	TRANSFORMATEUR 100/230V	Transformador 100/230V	1			X		

A = available - disponible - disponible

B = on request - sur demande - a petición

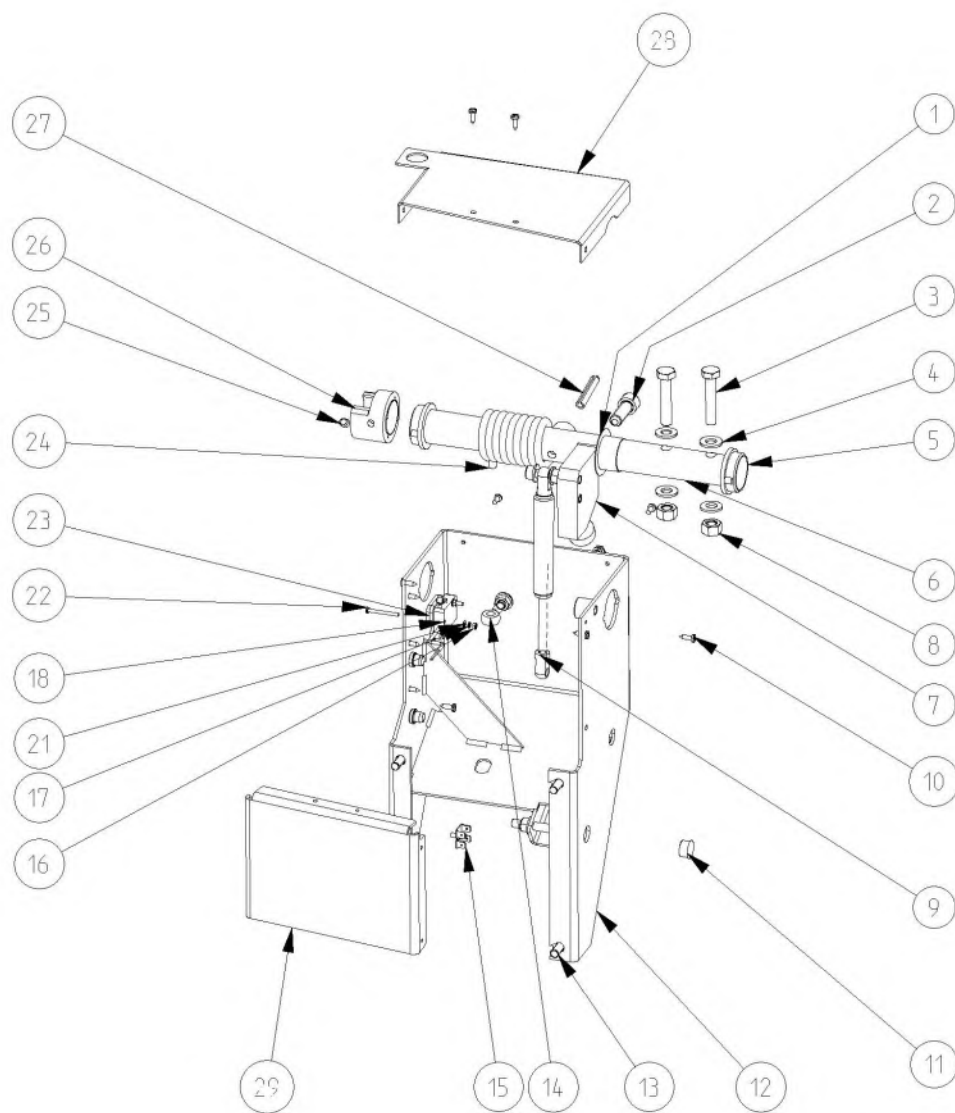
C = suggested - suggéré - sugerido



A = available - disponible - disponible

B = on request - sur demande - a petición

C = suggested - suggeré - sugerido

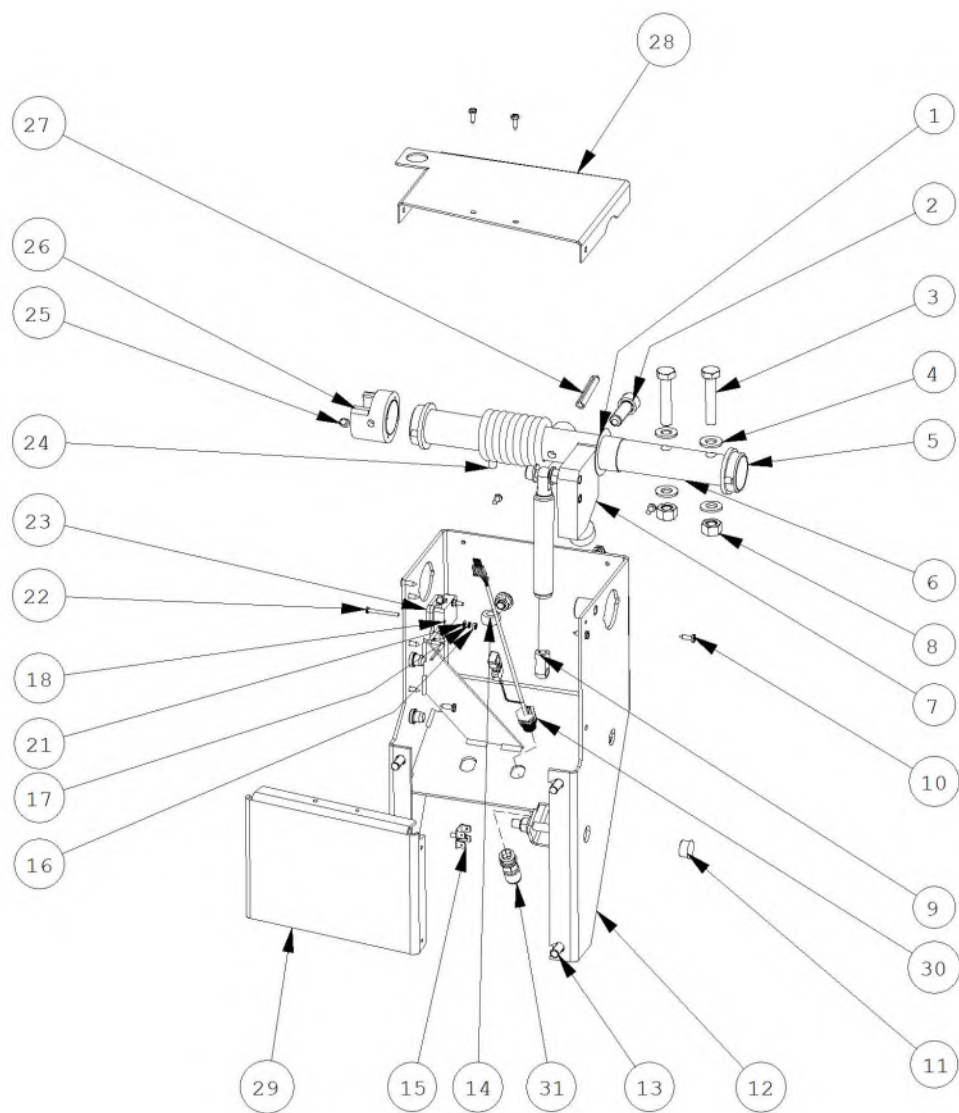


Pos	Code	Designation	Désignation	Designacìon	N.	Note	Nota	A	B	C
1	1-22441A	SHIM RING	RONDELLE D'ARASEMENT	ARANDELA DE ENRASE	1	32X45X1 DIN988		X		
2	1-20409	SCREW,HEX SOCKET HEAD CAP	VIS CHc	TORNILLO TCEI	1	M12X35 8.8 A2J		X		
3	1-19901	SCREW, HEX HEAD MACCHINE	VIS H	TORNILLO TE	2	912 D.32		X		
4	1-10141A1	WASHER P.d.10	RONDELLE D 10	ARANDELA D 10	4			X		
5	EAC0058D36A	WHEELGUARD BUSHING	DOUILLE GUIDE PROTECTION ROUE	CASQUILLO GUÍA PROTECCIÓN RUEDA	2	D.32		X		
6	EAM0076G37A	W.G. SHAFT	ARBRE PROTECTION ROUE	ÁRBOL PROTECCIÓN RUEDA	1			X		
7	EAM0076G38A	WHEELGUARD STOP	ARRET PROTECTION ROUE ZING.	TOPE PROTECCIÓN RUEDA CINC.	1			X		
8	1-18733A	NUT,SELF LOCK. ALL-METAL	ECROU M10 AUT.FR. MET.	TUERCA M10 AUT.INS.MET.	2	M10 A2J 6925		X		
9	1-06769A	GAS SPRING	AMORTISSEUR	AMORTIGUADOR	1			X		X
10	1-22623A	SCREW, PHIL PAN H.TAPP.	VIS AUTOTAR.	TORNILLO AUTORR.	11				X	
11	EAC0060G00A	VIBRATORY SYSTEM HOLES CUP	BOUCHON, GROUPE MESURE	TAPON-GRUPO MEDIDAS	1			X		
12	EAS2133G38A	WHEELGUARD AND MONITOR SUP.	SUPPORT ECRAN ET PROT. R.	SOPORTE MONITOR Y PROT. R.	1			X		
13	1-17709	SCREW TCEI 8X20 8G	VIS CHc	TORNILLO TCEI	4			X		
14	1-01530	EYE-SCREW M8x50	VIS A CÉILLET	TORNILLO CON RANURA	1			X		
15	2-23201	FLAT PLUG GROUNDING 4-POL.	CONNECTEUR PLAT TERRE	CONECTOR PLATO M/TIERRA	1			X		
16	1-11233	NUT - M3 WHITE ZINCKED	ECROU M3 6S	TUERCA M3 CL.8 ZINC.	2			X		
17	1-1248	WASHER, TOOTHED EXTERNAL	RONDELLE	ARANDELA DENTADA EXT.	2	D.3 DIN 6798/A		X		

A = available - disponible - disponible

B = on request - sur demande - a petición

C = suggested - suggeré - sugerido



Pos	Code	Designation	Désignation	Designacìon	N.	Note	Nota	A	B	C
1	1-22441A	SHIM RING	RONDELLE D'ARASEMENT	ARANDELA DE ENRASE	1	32X45X1 DIN988		X		
2	1-20409	SCREW,HEX SOCKET HEAD CAP	VIS CHc	TORNILLO TCEI	1	M12X35 8.8 A2J		X		
3	1-19901	SCREW, HEX HEAD MACCHINE	VIS H	TORNILLO TE	2	912 D.32		X		
4	1-10141A1	WASHER P.d.10	RONDELLE D 10	ARANDELA D 10	4			X		
5	EAC0058D36A	WHEELGUARD BUSHING	DOUILLE GUIDE PROTECTION ROUE	CASQUILLO GUÍA PROTECCIÓN RUEDA	2	D.32		X		
6	EAM0076G37A	W.G. SHAFT	ARBRE PROTECTION ROUE	ÁRBOL PROTECCIÓN RUEDA	1			X		
7	EAM0076G38A	WHEELGUARD STOP	ARRET PROTECTION ROUE ZING.	TOPE PROTECCIÓN RUEDA CINC.	1			X		
8	1-18733A	NUT,SELF LOCK. ALL-METAL	ECROU M10 AUT.FR. MET.	TUERCA M10 AUT.INS.MET.	2	M10 A2J 6925		X		
9	1-06769A	GAS SPRING	AMORTISSEUR	AMORTIGUADOR	1			X		X
10	1-22623A	SCREW, PHIL PAN H.TAPP.	VIS AUTOTAR.	TORNILLO AUTORR.	11				X	
11	EAC0060G00A	VIBRATORY SYSTEM HOLES CUP	BOUCHON, GROUPE MESURE	TAPON-GRUPO MEDIDAS	1			X		
12	EAS2133G38A	WHEELGUARD AND MONITOR SUP.	SUPPORT ECRAN ET PROT. R.	SOPORTE MONITOR Y PROT. R.	1			X		
13	1-17709	SCREW TCEI 8X20 8G	VIS CHc	TORNILLO TCEI	4			X		
14	1-01530	EYE-SCREW M8x50	VIS A CÉILLET	TORNILLO CON RANURA	1			X		
15	2-23201	FLAT PLUG GROUNDING 4-POL.	CONNECTEUR PLAT TERRE	CONECTOR PLATO M/TIERRA	1			X		
16	1-11233	NUT - M3 WHITE ZINCKED	ECROU M3 6S	TUERCA M3 CL.8 ZINC.	2			X		
17	1-1248	WASHER, TOOTHED EXTERNAL	RONDELLE	ARANDELA DENTADA EXT.	2	D.3 DIN 6798/A		X		

A = available - disponible - disponible

B = on request - sur demande - a petición

C = suggested - suggeré - sugerido

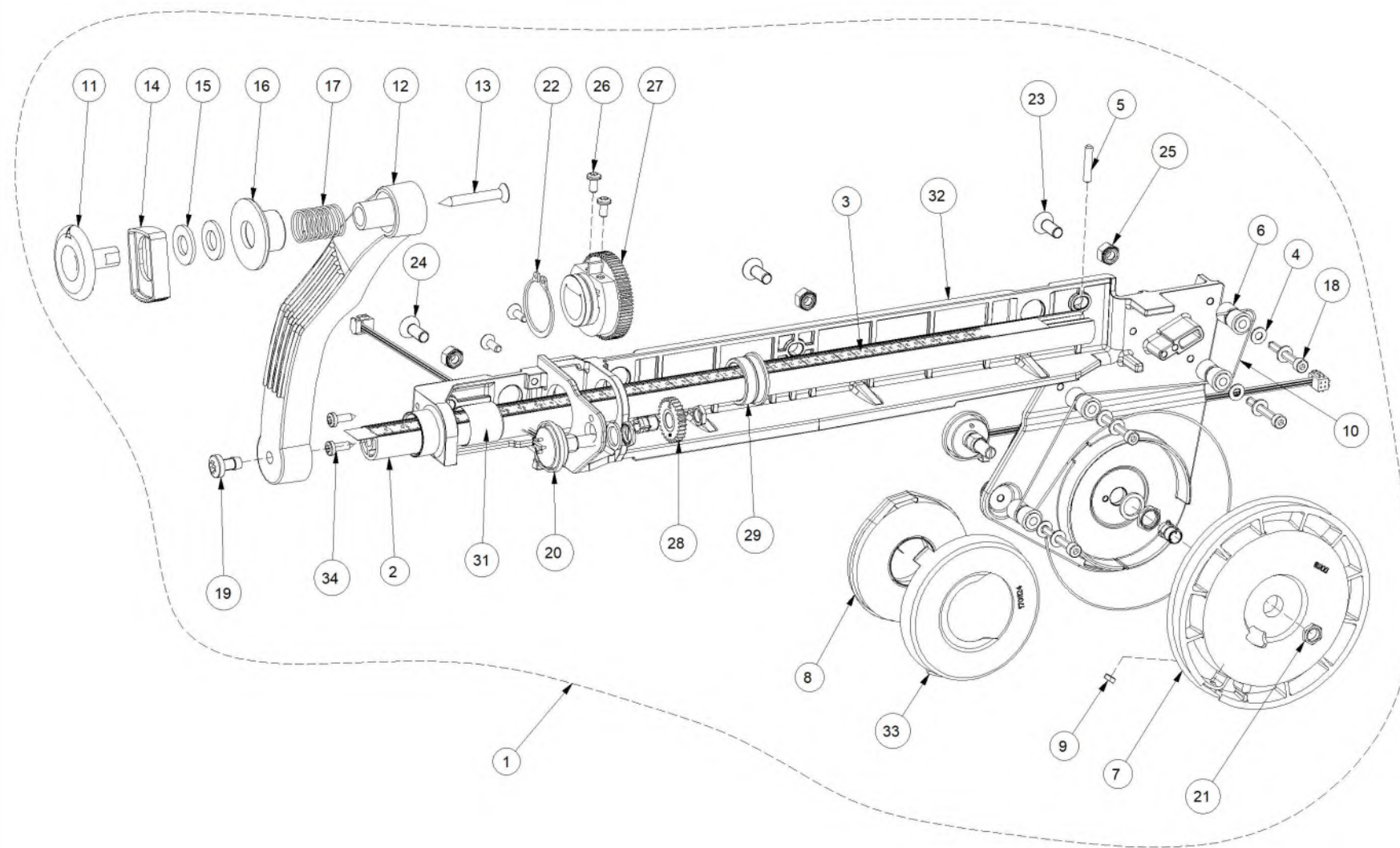
Pos	Code	Designation	Désignation	Designacìon	N.	Note	Nota	A	B	C
18	2-7261	WHEELGUARD SWITCH	INTERRUPTEUR PROTECTION ROUE	INTERRUPTOR PROTECCIÓN RUEDA	1			X		X
21	1-9541	WASHER PLAIN D3	RONDELLE d.3	ARANDELA PLANA D.3 GALVANIZ.	2			X		
22	1-7104	SCREW, SLOTTED CHEESE HEAD	VIS C	TORNILLO TC	2	TC M3x30 4S, ZINC		X		
						UNI 6107-67				
23	EAC0053J16A	MICROSWITCH PLATE	PLAQUETTE MICRORUPTEUR	PLACA MICROINTERRUPTOR	1			X		
24	1-04267A	WHEELGUARD SPRING	RESSORT PROTECTION ROUE	MUELLE PROTECCIÓN RUEDA	1			X		
25	1-49010A	SCREW, SOCKET WITH CUP POINT	VIS FHc ENJOLIVEUR	TORNILLO STEI P. CAJA	1			X		
26	EAC0058D38A	MICRO FIXING RING	BAGUE FIXATION MICRO	ANILLO FIJACIÓN MICRO	1			X		
27	1-12452	PINS - STRAIGHT SLOTTED	BROCHE ELASTIQUE	PASADOR ELÁSTICA	1	8X45		X		
						1481				
28	EAS2133G36A	COVER WHEELG. SUPP.	HABIL.PROT. ROUE	COBER. PROT RUEDA	1			X		
29	EAS2177G41A	BACK PACK FRONT COVER	COVERTURE FRONTALE BACK PACK	COBERTURA FRONTALBACK PACK	1				X	
30	EAW0286G77A	STAND-ALONE LIFT ENABLING CABLE	CABLE ACTIVATION ELEVATEUR	CABLE DE HABILITACIÓN ELEVADOR	1	M16x1.5 - M12x1		X		
31	EAA0502G97A	BRIDGE CONNECTOR	CONNECTEUR	CONECTOR	1	M12x1			X	

A = available - disponible - disponible

B = on request - sur demande - a petición

C = suggested - suggéré - sugerido

EAZ0136G42A.A



12/2018

Pos	Code	Designation	Désignation	Designacìon	N.	Note	Nota	A	B	C
1	EAA0471G18A	M2 SAPE 1D-2D ASSY	M2 SAPE 1D-2D ASSY	M2 SAPE 1D-2D ASSY	1	ASSY		X		
						GRUPPO				
2	EAM0053G19A	STANDARD. ROD SAPE, M2	JAUGE ETALON M2 UNIFIE	VARILLA CALIBRE M2 UNIFICADO	1			X		
3	EAM0140G91A	DISTANCE SCALE DECAL (MM)	PLAQUE JAUGE ETALON EN MM	TARJETA VARILLA CALIBRE EN MM.	1	SAPE M2		X		
4	1-9641	WASHER	RONDELLE	ARANDELA	4			X		
5	1-7810	SET SCREW FLAT POINT ZINC.	VIS S.TÊTE A 6 P.M4*20 12K GALV.	TORNILLO S. CABEZ 12K GALV.	1	M4x20		X		
						913				
6	EAM0005D35A	GUIDING REEL	ROULEAU DE RENVOI	RODILLO DE REENVÍO	4			X		
7	EAC0058D06A	Return pulley	Poulie renvoi	Polea de reenvío	1			X		
8	1-08167A	STAND. SAPE TENSION SPRING	RESSORT RETOUR JAUGE SAPE UNIF.	MUELLE RETORNO VARILLA SAPE UNIF.	1				X	
9	1-11233	NUT - M3 WHITE ZINCKED	ECROU M3 6S	TUERCA M3 CL.8 ZINC.	1			X		
10	6-00604A	ROPE SPECTRA 1000 D 0,6	CORDE SPECTRA 1000 D 0,6	CUERDA SPECTRA 1000 D 0,6	0,9	"0,52M"		X		
11	EAC0058D11A	Feeler disk	Disque de contact	Disco palpador	1			X		X
12	EAC0054P01A	ARM, AXCEL CALIPER	JAUGE ETALON	BRAZO VARILLA CALIBRE	1			X		
13	1-3624	SCREW POLYPLAST	VIS AUTOTAR. POUR PLAST.	TORNILLO AUTOENROSC. PARA PLAST.	1	M5x40		X		
14	EAC0058D09A	REGISTER, EJECTION	GUIDE D'EXPULSION	GUÍA DE EXPULSIÓN	1			X		
15	1-10141A1	WASHER P.d.10	RONDELLE D 10	ARANDELA D 10	2			X		
16	EAC0058D10A	RING, PUSH	BAGUE DE POUSSEE	ANILLO DE EMPUJE	1			X		
17	1-06868A	SPRING, COMPRESSION	RESSORT DE COMPRESSION	MUELLE DE COMPRESIÓN	1			X		
						2098(B)				

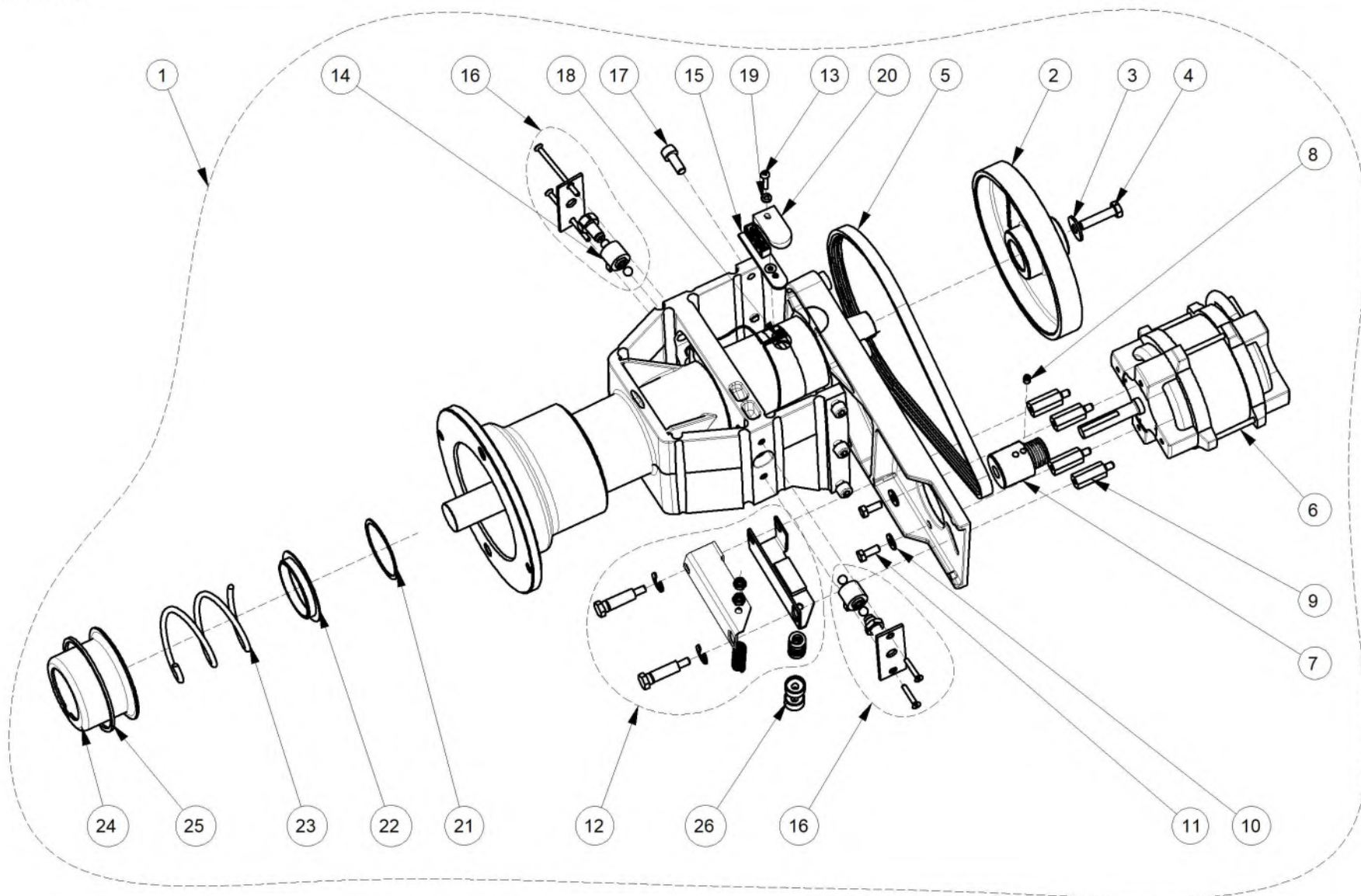
A = available - disponible - disponible **B** = on request - sur demande - a petición **C** = suggested - suggeré - sugerido

Pos	Code	Designation	Désignation	Designacìon	N.	Note	Nota	A	B	C
18	1-13909	SCR - HEX SKT HD CAP	VIS CHc ZING.	TORNILLO TCEI	4	M4x30 912		X		
19	1-3824	SCREW	VIS AUT. TC CRUCIF.	TORNILLO AUTOM.TC CRUZ	1	M6x12 DIN 7516AE		X		
20	EAA0266D20A	Potentiometer unit with nut	Groupe potentiomètre avec écrou	Grupo del potenciómetro con tuerca	2			X		
21	2-07657A	CLAMPING DEVICE	DOUILLE A PINCE	CASQUILLO DE PINZA	2			X		
22	1-13377A	CIRCLIP FOR SHAFT	CIRCLIP	ANILLO SEEGER	1	D.27 UNI 7435		X		
23	1-22003A	SCREW 6X16 10K	VIS FHc	TORNILLO TSEI	3			X		
24	1-12126A	SELF TAP. SCREW PT	VIS AUTOTAR.	TORNILLO AUTORR.	2	4X12		X		
25	1-9933	NUT, PREVAILING TORQUE M6	ECROU M6 AUTO-BL.	TUERCA M6 AUT. BAS.CL.6	3			X		
26	1-11726A	SCREW FOR PLAST. PHIL. PAN	VIS POUR PLASTIQUE AUTOTAR.	TORNILLO PARA PLÁSTICO AUTOENROSC.	2	M=4,0 x 8 PLASTIC		X		
27	EAC0058D12A	COG WHEEL 56 TEETH	ENGRENAGE 56 DENTS	ENGRANAJE 56 DIENTES	1			X		
28	EAC0058D13A	WHEEL GEAR	ENGRENAGE ROUE	RUEDA DEL ENGRANAJE	1	Z 28		X		
29	EAM0068G76A	S2-D2 BUSHING	BRIDE	CASQUILLO	1			X		
31	1-13865A	BUSHING	DOUILLE	CASQUILLO	1	IGUS GSM202120		X		
32	EAM0125G67A	MACHINED SAPE SUPPORT for M Cabinet	SUPPORT SAPE S2	SOPORTE SAPE S2	1			X		
33	EAC0058D58A	Safety cover	Couvercle de sécurité	Tapa de seguridad	1			X		
34	1-22623A	SCREW, PHIL PAN H.TAPP.	VIS AUTOTAR.	TORNILLO AUTORR.	2				X	

A = available - disponible - disponible

B = on request - sur demande - a petición

C = suggested - suggéré - sugerido



Pos	Code	Designation	Désignation	Designacìon	N.	Note	Nota	A	B	C
1	EAA0338G53A	ALU VS MOT. INT. FL.D. 40/28,5 POL. RING	ENSEMBLE VIBRATOIRE	GRUPO DE MEDIDA	1			X		
1	EAA0364G85A	ALU VS MOT. INT. FL.D. 40/28,5 POL. UL	ENSEMBLE VIBRATOIRE UL	GRUPO DE MEDIDA UL	1			X		
2	EAM0005D12A	DRIVE PULLEY	POULIE D'ENTRAÎNEMENT	POLEA DE TRANSMISIÓN	1			X		
3	1-17841	WASHER - d. 8X24	RONDELLE d.8X24	ARANDELA COMUN D.8X24 GALVANIZ.	1			X		
4	1-32901	HEXAGON HEAD SCREW	VIS H	TORNILLO TE	1	M8X35		X		
5	8-3531	BELT	COURROIE	CORREA	1	933	5PJ711	X		X
6	2-59266A	MOTOR INCL. CONNECTOR Y2K	MOTEUR	MOTOR CON CONECTOR Y2K	1	7867		X		
6	2-59366A	UL MOTOR INCL. CONNECTOR Y2K	UL MOTEUR	UL MOTOR CON CONECTOR Y2K	1	US ONLY		X		
7	EAM0005D08A	MOTOR PULLEY	POULIE MOTEUR	POLEA MOTOR	1	WS 120W		X		
8	1-28410	SCREW	VIS	TORNILLO	1	M6X8		X		
9	EAM0005D09A	SPACER FOR MOTOR	PIÈCE D'ÉCARTEMENT DU MOTEUR	DISTANCIADOR PARA MOTOR	4	915		X		
10	1-16641A	Washer plain	Rondelle plate	Arandela plana	2			X		
11	1-46701A	HEX HEAD SCREW	VIS H	TORNILLO TE	2	M6X16		X		
12	EAA0332G12A	MAIN SHAFT LOCK ASSEMBLY	ENS. DE BLOCAGE ARBRE PRINCIPAL	FRENO DE PARO COMPLEM	1	933		X		
13	1-35006A	SCREW	VIS	TORNILLO	1	M4X20		X		
14	EAA0260D59A	TRANSDUCER	CAPTEUR	TRANSDUCTOR	2	7985		X		X
15	EAA0344G00A	OPTO-ELECTRONIC UNIT	CARTE OPTO-ENCODER AVEC LENTILLE	TARJETA OPTO-ENCODER CON LENTE	1			X		X

A = available - disponible - disponible **B** = on request - sur demande - a petición **C** = suggested - suggeré - sugerido

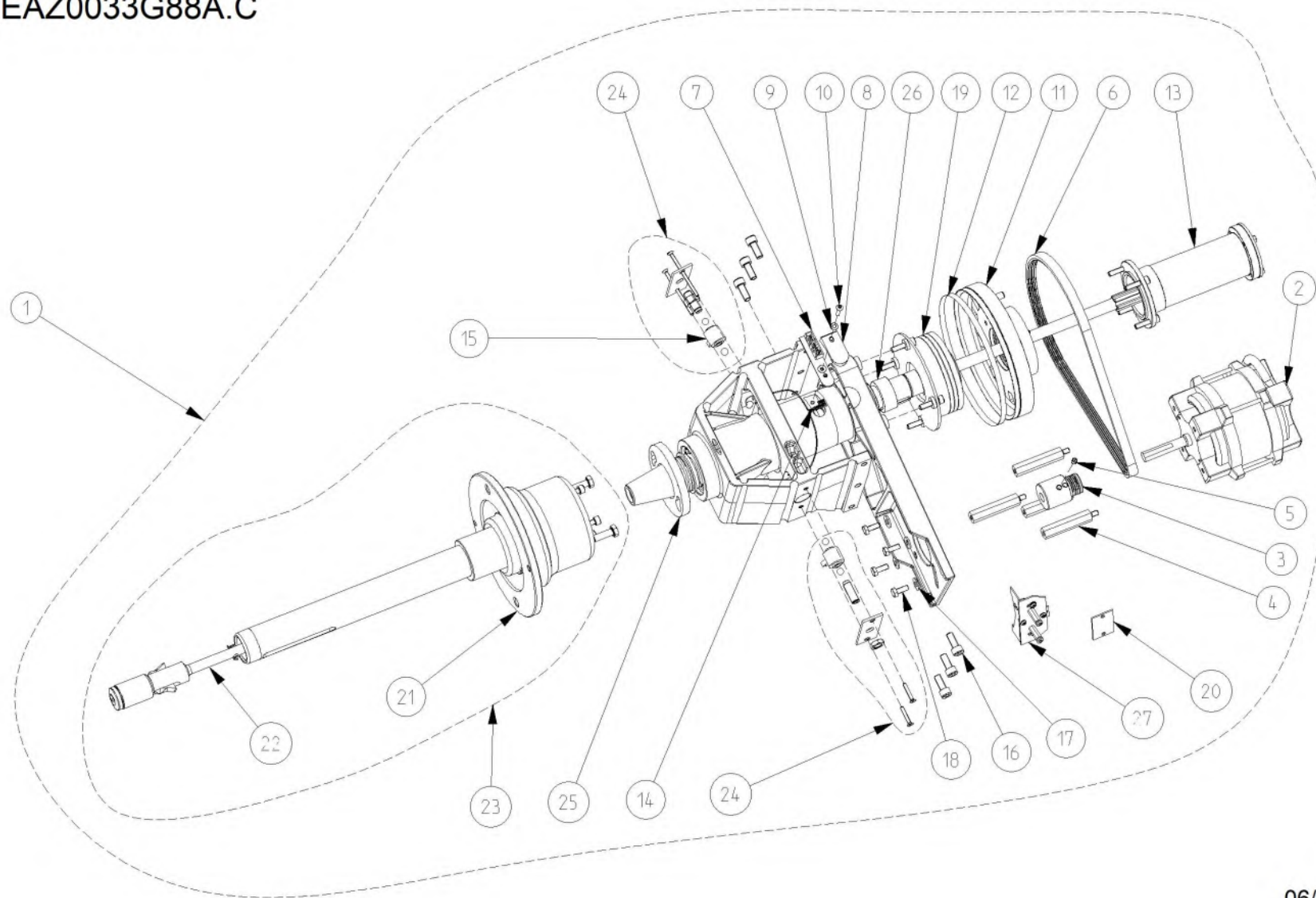
Pos	Code	Designation	Désignation	Designacìon	N.	Note	Nota	A	B	C
16	EAA0328G16A	TRANSDUCER FIXING UNIT	MOYENS DE FIXATION DU CAPTEUR	GRUPO FIJACIÓN PIEZA	1			X		X
17	1-17709	SCREW TCEI 8X20 8G	VIS CHc	TORNILLO TCEI	6			X		
18	EAW0240G67A	CABLE WITHOUT TEMP. SENSOR	CÂBLE SANS CAPTEUR DE TEMPER.	CABLE SIN SENSOR TEMPERATURA	1			X		X
19	1-9641	WASHER	RONDELLE	ARANDELA	1			X		
20	EAC0094G11A	ENCODER BOARD PROTECTION	PROTECTION CARTE ENCODER	PROTECCIÓN TARJETA ENCODER	1			X		
21	1-17641	WASHER 53x60x1	RONDELLE	ARANDELA	1		DIN988	X		
22	EAC0058D14A	SPRING CENTRING RING	ANNEAU DE CENTRAGE DU RESSORT	MUELLE DE CENTRAJE DEL ANILLO	1			X		
23	1-07768A	COMPRESSION SPRING	RESSORT À PRESSION	MUELLE A PRESIÓN	1			X		
24	EAS2025D14A	SPRING GUIDE	CARTER RESSORT	GUÍA DEL MUELLE	1			X		
25	1-13077	CIRCLIP	ANNEAU	ANILLO ELÁSTICO	1			X		
26	EAM0005D18A	SPACER	ENTRETOISE	DISTANCIADOR	2			X		

A = available - disponible - disponible

B = on request - sur demande - a petición

C = suggested - suggeré - sugerido

EAZ0033G88A.C



06/2016

Pos	Code	Designation	Désignation	Designacìon	N.	Note Nota	A	B	C
1	EAA0382G00A	ALU MEASUREMENT UNIT L	ALU GROUPE DE MESURE L	ALU GRUPO DE MEDIDA L	1	P-CLAMP	X		
1	EAA0392G39A	ALU UL MEASUREMENT UNIT	ALU GROUPE DE MESURE UL	ALU GRUPO DE MEDIDA UL	1	P-CLAMP	X		
1	EAA0393G05A	ALU MEASUREMENT UNIT L	ALU GROUPE DE MESURE L	ALU GRUPO DE MEDIDA L	1	US ONLY P-CLAMP Long cable	X		
2	2-59266A	MOTOR INCL. CONNECTOR Y2K	MOTEUR	MOTOR CON CONECTOR Y2K	1		X		
2	2-59366A	UL MOTOR INCL. CONNECTOR Y2K	UL MOTEUR	UL MOTOR CON CONECTOR Y2K	1	US ONLY WS 120W Long cable	X		
2	2-67766A	MOTOR INCL. CONNECTOR Y2K	MOTEUR	MOTOR CON CONECTOR Y2K	1		X		
3	EAM0005D08A	MOTOR PULLEY	POULIE MOTEUR	POLEA MOTOR	1		X		
4	EAM0061G82A	UNIT MOTOR SPACER	PIÈCE D'ÉCARTEMENT DU MOTEUR	DISTANCIADOR MOTOR GRUPO	4	P-CLAMP	X		
5	1-28410	SCREW	VIS	TORNILLO	1	M6X8 915	X		
6	8-3531	BELT	COURROIE	CORREA	1	5PJ711 7867	X		X
7	EAA0344G00A	OPTO-ELECTRONIC UNIT	CARTE OPTO-ENCODER AVEC LENTILLE	TARJETA OPTO-ENCODER CON LENTE	1		X		X
8	EAC0094G11A	ENCODER BOARD PROTECTION	PROTECTION CARTE ENCODER	PROTECCIÓN TARJETA ENCODER	1		X		
9	1-9641	WASHER	RONDELLE	ARANDELA	1		X		
10	1-35006A	SCREW	VIS	TORNILLO	1	M4X20 7985	X		
11	EAM0021D18A	MOTOR PULLEY	POULIE MOTEUR	POLEA MOTOR	1		X		
12	EAM0005D64A	ENCODER BAR CODE	CODE A BARRES ENCODEUR	CÓDIGO DE BARRAS ENCODER	1		X		
13	EAA0307G36A	REPLACEMENT KIT "P"	KIT DE REMPLACEMENT "P"	KIT DE SUSTITUCIÓN "P"	1		X		

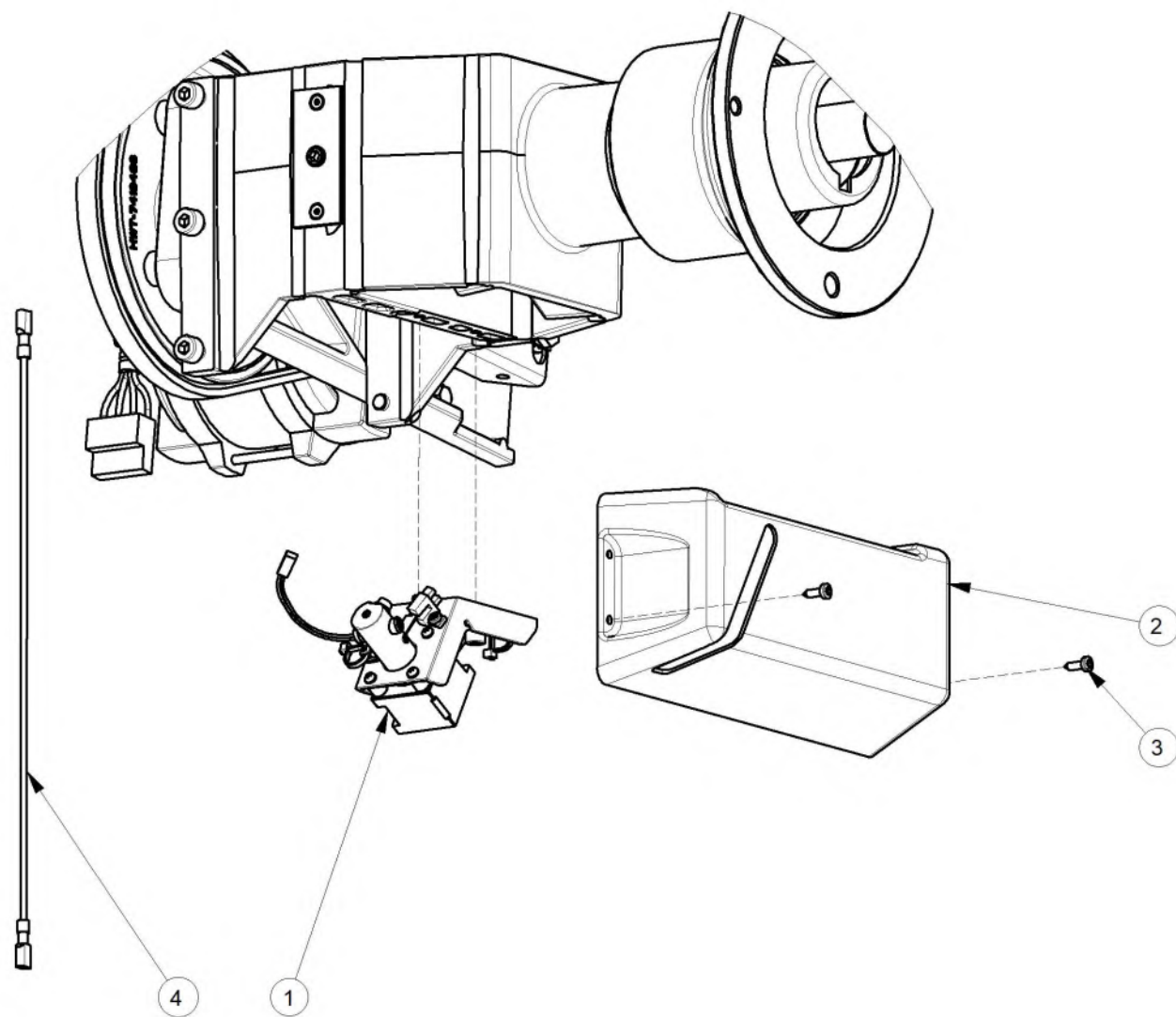
A = available - disponible - disponible

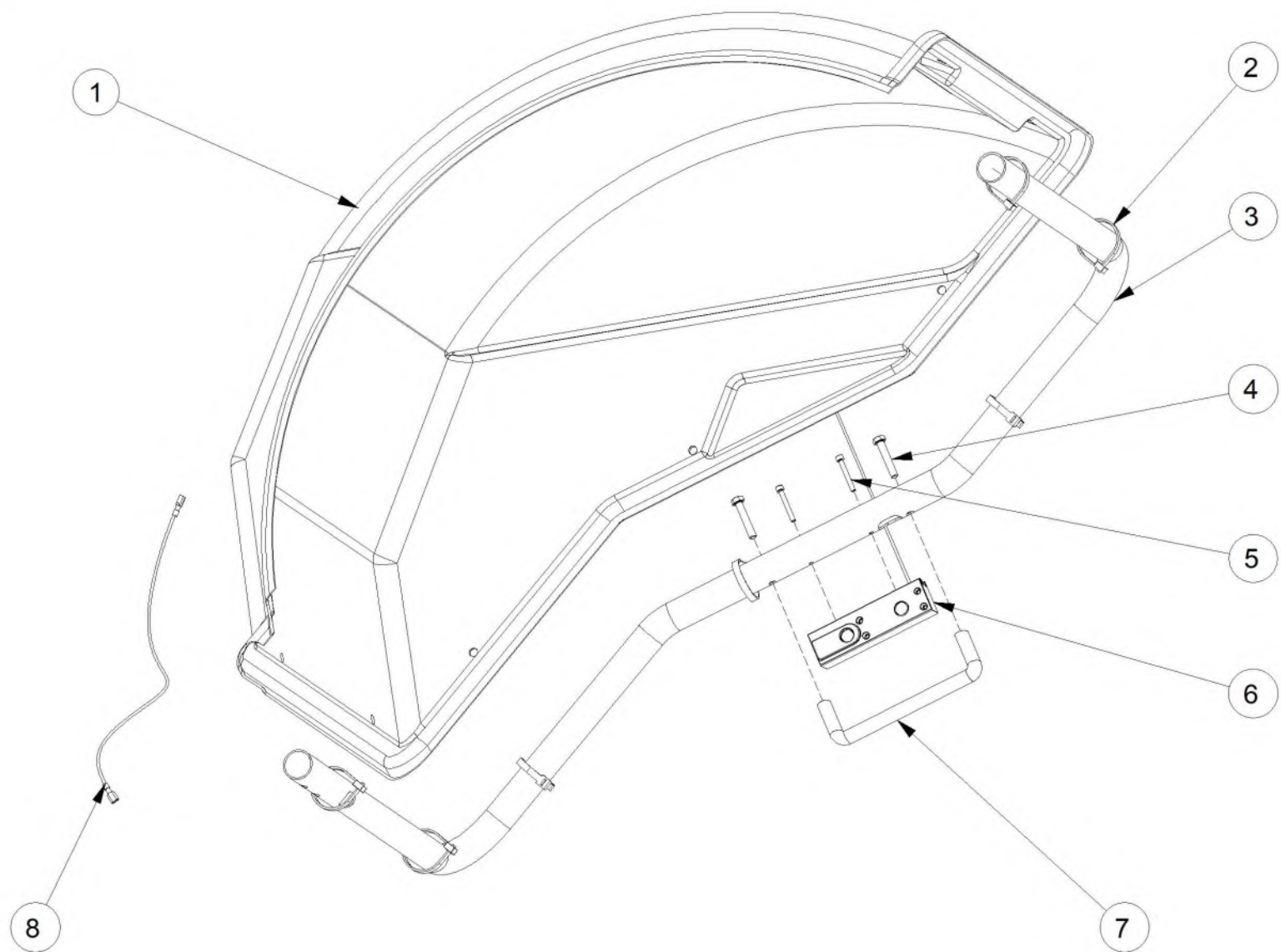
B = on request - sur demande - a petición

C = suggested - suggéré - sugerido

Pos	Code	Designation	Désignation	Designacìon	N.	Note	Nota	A	B	C
14	EAW0240G67A	CABLE WITHOUT TEMP. SENSOR	CÂBLE SANS CAPTEUR DE TEMPER.	CABLE SIN SENSOR TEMPERATURA	1			X		X
14	EAW0282G49A	CABLE WITHOUT TEMP. SENSOR	CÂBLE SANS CAPTEUR DE TEMPER.	CABLE SIN SENSOR TEMPERATURA	1	6300-2p		X		X
15	EAA0260D59A	TRANSDUCER	CAPTEUR	TRANSDUCTOR	2			X		X
16	1-17709	SCREW TCEI 8X20 8G	VIS CHc	TORNILLO TCEI	6			X		
17	1-16641A	Washer plain	Rondelle plate	Arandela plana	4			X		
18	1-46701A	HEX HEAD SCREW	VIS H	TORNILLO TE	4	M6X16 933		X		
19	EAA0307G35A	BRAKE DISC REPAIR KIT	KIT FREIN DE POSITIONNEMENT	KIT FRENO DE POSICIONAMIENTO	1			X		
19	EAA0383G85A	BRAKE DISC REPAIR KIT	KIT FREIN DE POSITIONNEMENT	KIT FRENO DE POSICIONAMIENTO	1	Long wire		X		
20	EAP0201D20A	ENCODER BOARD COMPLETE	CARTE ENCODEUR COMPLETE	TARJETA ENCODER COMPLETA	1			X		X
21	EAA0382G01A	POWER CLAMP FLANGE L	FLASQUE "POWER CLAMP" L	BRIDA "POWER CLAMP" L	1			X		
22	EAA0382G02A	PULL-SHAFT COMPLETE L	AXE COMPLET L	TIRANTE COMPLETO L	1			X		
23	EAA0384G71A	P-CLAMP FLANGE COMPLETE	FLASQUE POWER CLAMP COMPLET	BRIDA P-CLAMP COMPLETA	1			X		
24	EAA0328G16A	TRANSDUCER FIXING UNIT	MOYENS DE FIXATION DU CAPTEUR	GRUPO FIJACIÓN PIEZA	1			X		X
25	EAA0307G37A	BAYONET FITTING	DISPOSITIFS ATTACHE BAÏONNETTE	DISCO DE BAYONETA DE FIJACIÓN	1				X	
26	EAM0051G25A	POWER CLAMP SPACER RING	BAGUE D'ECARTEMENT POWER CLAMP	ANILLO DISTANCIADOR	1	40x17			X	
27	EAK0329G15A	BOARD SUPPORT KIT	KIT SUPPORT CARTE	KIT SOPORTE TARJETA	1				X	

A = available - disponible - disponible **B** = on request - sur demande - a petición **C** = suggested - suggeré - sugerido





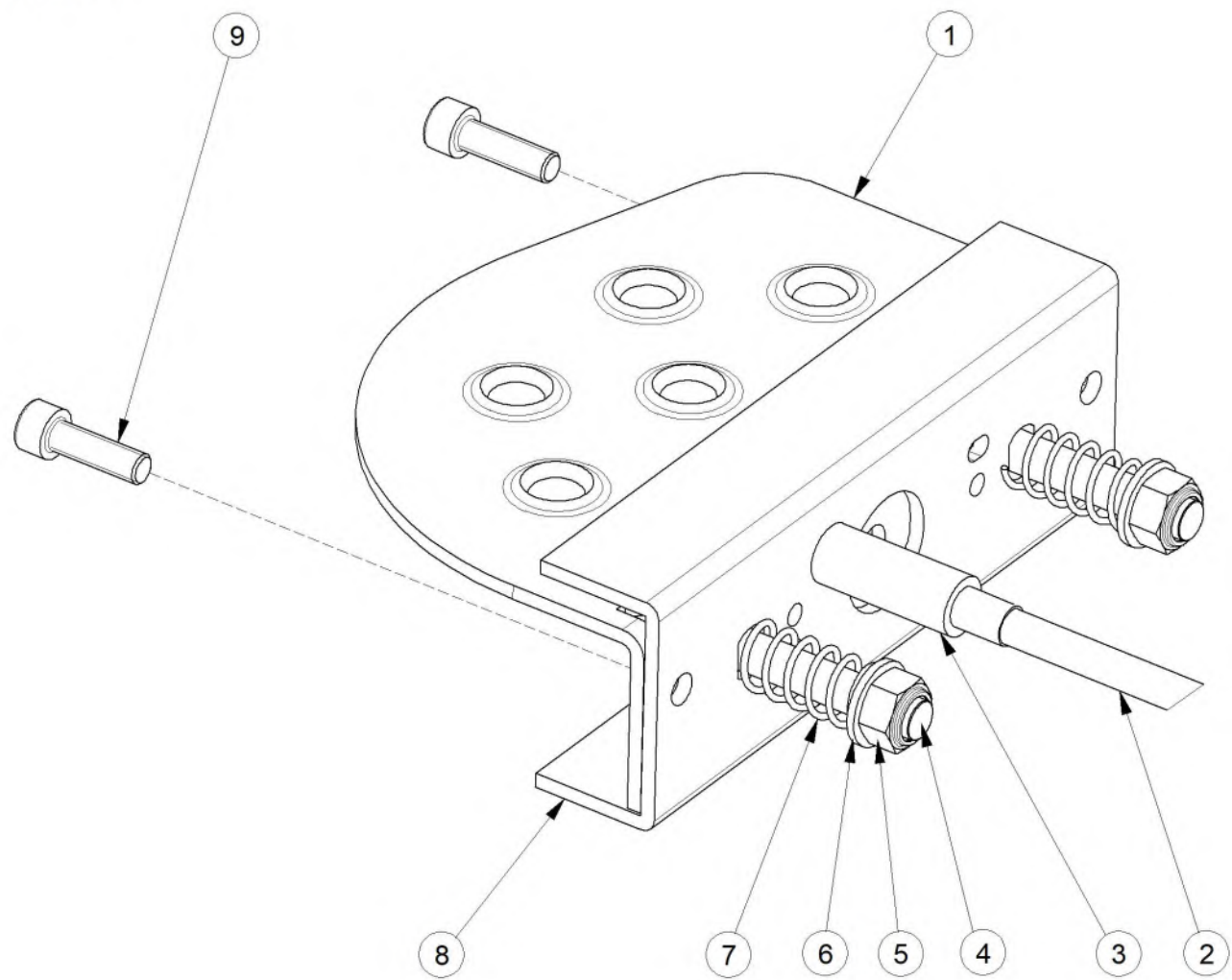
Pos	Code	Designation	Désignation	Designacìon	N.	Note	Nota	A	B	C
1	EAC0100G21A	WHEEL GUARD 42"	PROTECTION ROUE 42"	PROTECCIÓN RUEDA 42"	1	42"		X		
2	5-03345A	CABLE TIE	COLLIER TUBES HUILE	ABRAZADERA TUBOS ACEITE	7	L.350		X		
3	EAM0076G34A	WHEEL GUARD PIPE	TUBE PROTECTION ROUE	TUBO PROTECCIÓN RUEDA	1			X		
4	1-19101A	SCREW, HEXAG.	VIS H	TORNILLO TE	2	M8X45 8.8 BR		X		
5	1-15509	SCREW	VIS CHc	TORNILLO TCEI	2	TCEI 5X40 8G		X		
6	EAA0439G97A	ASSY SONAR FOR PIPE	GROUPE SONAR	GRUPO SONAR	1	DIGITAL VERSION		X		X
6	EAA0440G00A	ASSY SONAR FOR PIPE	GROUPE SONAR	GRUPO SONAR	1	10" TOUCHSCREEN VIDEO VERSION		X		X
7	8-09233A	PLASTIC HANDLE	POIGNEE POUR PROT. ROUE	EMPUÑADURA PARA PROT. RUEDA	1			X		
8	EAW0283G76A	SONAR SENSOR EXTENSION CABLE	CÂBLE SENSOR SONAR (EXTENSION)	CABLE SENSOR SONAR (EXTENSION)	1	VIDEO VERSION		X		X
8	EAW0283G81A	SONAR SENSOR IIC EXTENSION CABLE	CÂBLE SENSOR SONAR IIC (EXTENSION)	CABLE SENSOR SONAR IIC (EXTENSION)	1	DIGITAL VERSION		X		X

A = available - disponible - disponible

B = on request - sur demande - a petición

C = suggested - suggeré - sugerido

EAZ0088G23A



05/2014

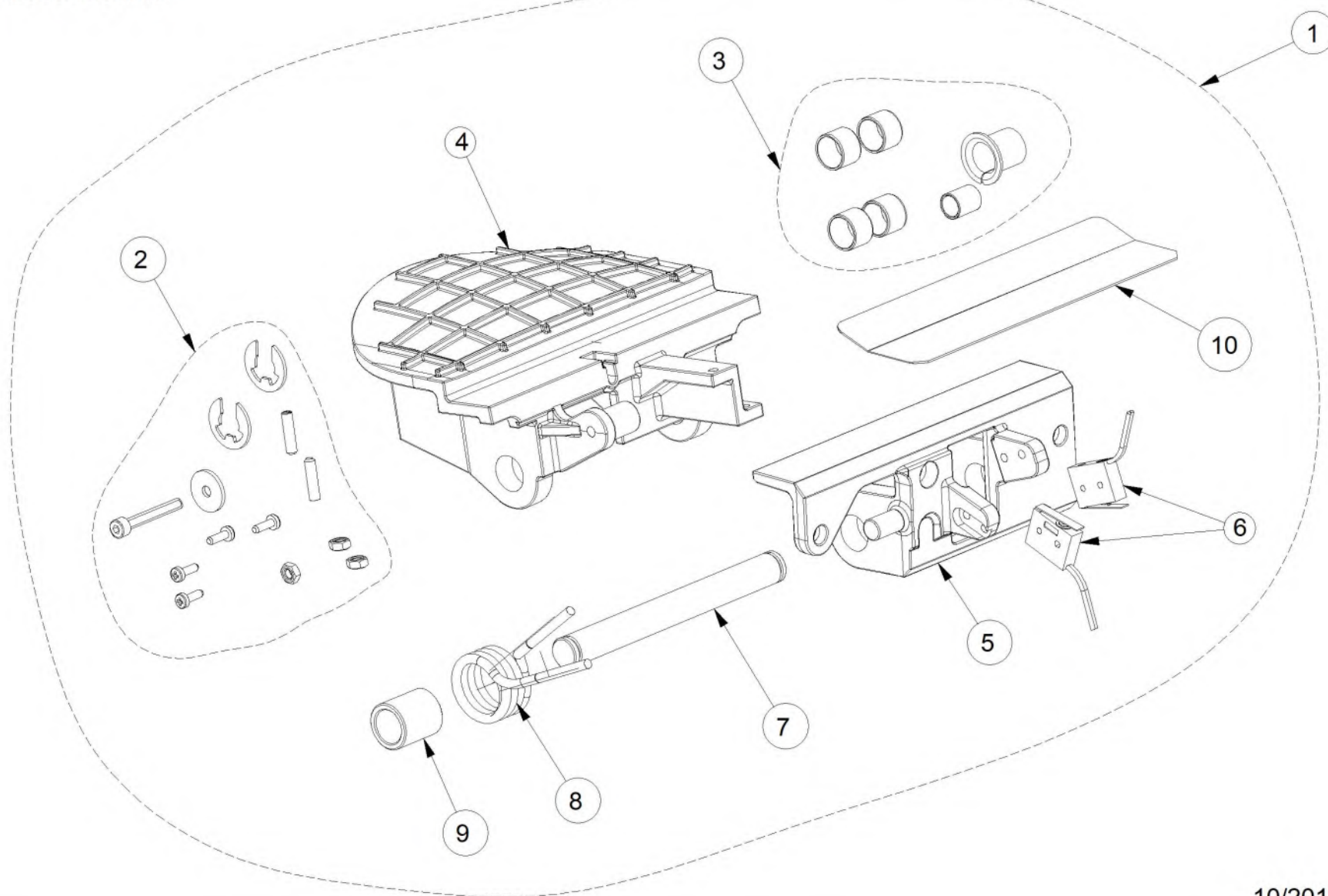
Pos	Code	Designation	Désignation	Designaciòn	N.	Note	Nota	A	B	C
1	EAS2020P20A	PEDAL	PÉDALE	PEDAL	1			X		
2	EAA0344G15A	BOWDEN CABLE ASSY	CABLE PÉDALE	CABLE PEDAL	1			X		
3	EAM0053G06A	SPACER	PIECE D'ECARTEMENT	DISTANCIADOR	1			X		
4	1-18209	Screw	Vis	Tornillo	2	M8 x 45	912	X		
5	1-10033	HEX NUT PREVAILING TORQUE M8	ECROU M8 5S	TUERCA M8 5S AUTOBLOQ.BAJO	2			X		
6	1-10041	WASHER D.8	RONDELLE DIAM 8	ARANDELA PLANA D.8 GALVANIZ.	2			X		
7	1-06768A	COMPRESSION SPRING	RESSORT À PRESSION	MUELLE DE COMPRESION	2			X		
8	EAS2027G18A	PEDAL HOLDER	SUPPORT PÉDALE	SOPORTE PEDAL	1			X		
9	1-16409	Screw	Vis	Tornillo	2			X		

A = available - disponible - disponible

B = on request - sur demande - a petición

C = suggested - suggeré - sugerido

EAZ0033G99A.B



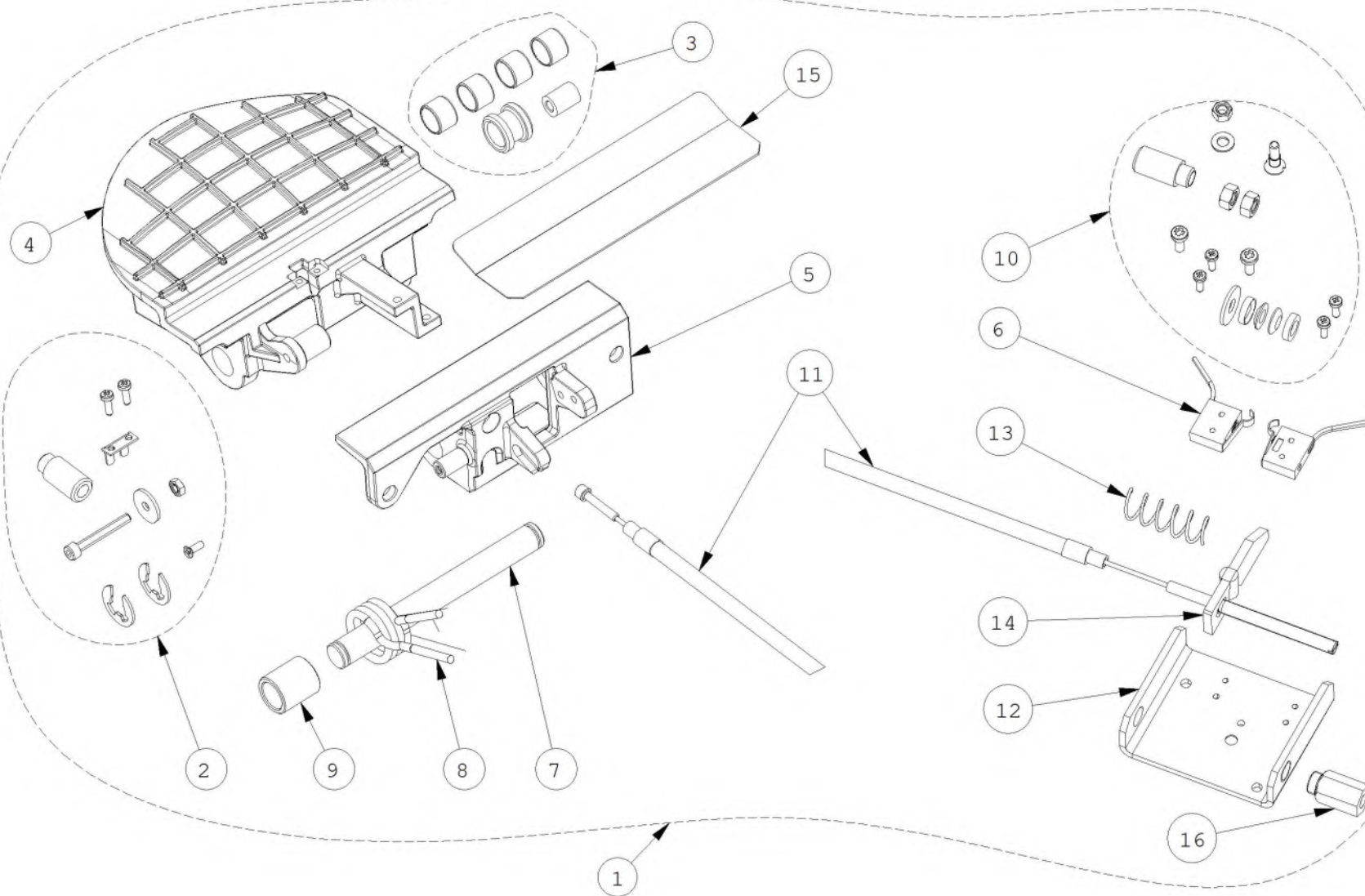
10/2013

Pos	Code	Designation	Désignation	Designacìon	N.	Note	Nota	A	B	C
1	EAA0372G98A	ALU BRAKE PEDAL 2 SWICTHES	PEDALE FREIN ALUMINIUM 2 MICRO	PEDAL FRENO ALUMINIO 2 MICRO	1			X		X
1	EAA0426G47A	ALU BRAKE PEDAL 2 SWITCHES 2.8 m	PEDALE FREIN ALUMINIUM 2 MICRO 2.8 m	PEDAL FRENO ALUMINIO 2 MICRO 2.8 m	1			X		X
2	EAK0306G90A	SCREWS 2 SWITCHES ALU BRAKE PEDAL SE KIT BOULONNERIE	PEDALE FREIN AU 2 MICRO	KIT TORNILLOS PEDAL FRENO AL 2 MICRO	1				X	
3	EAK0306G92A	BUSHES FOR ALU BRAKE PEDAL SET	KIT DOUILLES PEDALE FREIN EN ALUMINIUM	KIT CASQUILLOS PEDAL FRENO DE ALUMINIO	1			X		
4	EAM0081G41A	BRAKE PEDAL FINISHED	PEDALE FINIE	PEDAL ACABADO	1				X	
5	EAM0081G42A	BRAKE PEDAL SUPPORT FINISHED	SUPPORT FINI	SOPORTE ACABADO	1				X	
6	2-15061A	MICROSWITCH *BURGESS	CONTACT *BURGESS	MICROINT. *BURGESS	2	V4NC A10 LEVER		X		X
6	2-16061A	MICROSWITCH WIRES 2800MM	MICROINTERRUPTEUR	MICROINTERRUPTOR	2	Long cable V4NC A30 LEVER		X		
7	EAM0046G39A	PEDAL PIN	GOUPILLE DE PÉDALE	PERNO DE ANCLAJE DEL PEDAL	1				X	
8	EAM0048G78A	SPRING, PEDAL SWITCH	RESSORT, PEDAL INTERRUPTEUR	MUELLE PEDAL INTERRUPTOR	1			X		X
9	EAM0051G96A	SPRING BUSHING	DOUILLE DE RESSORT	CASQUILLO DEL MUELLE	1				X	
10	EAL0443G72A	PROTECTIVE LABEL	ADHÉSIF PROTECTEUR	ADHESIVO DE PROTECCIÓN	1			X		X

A = available - disponible - disponible

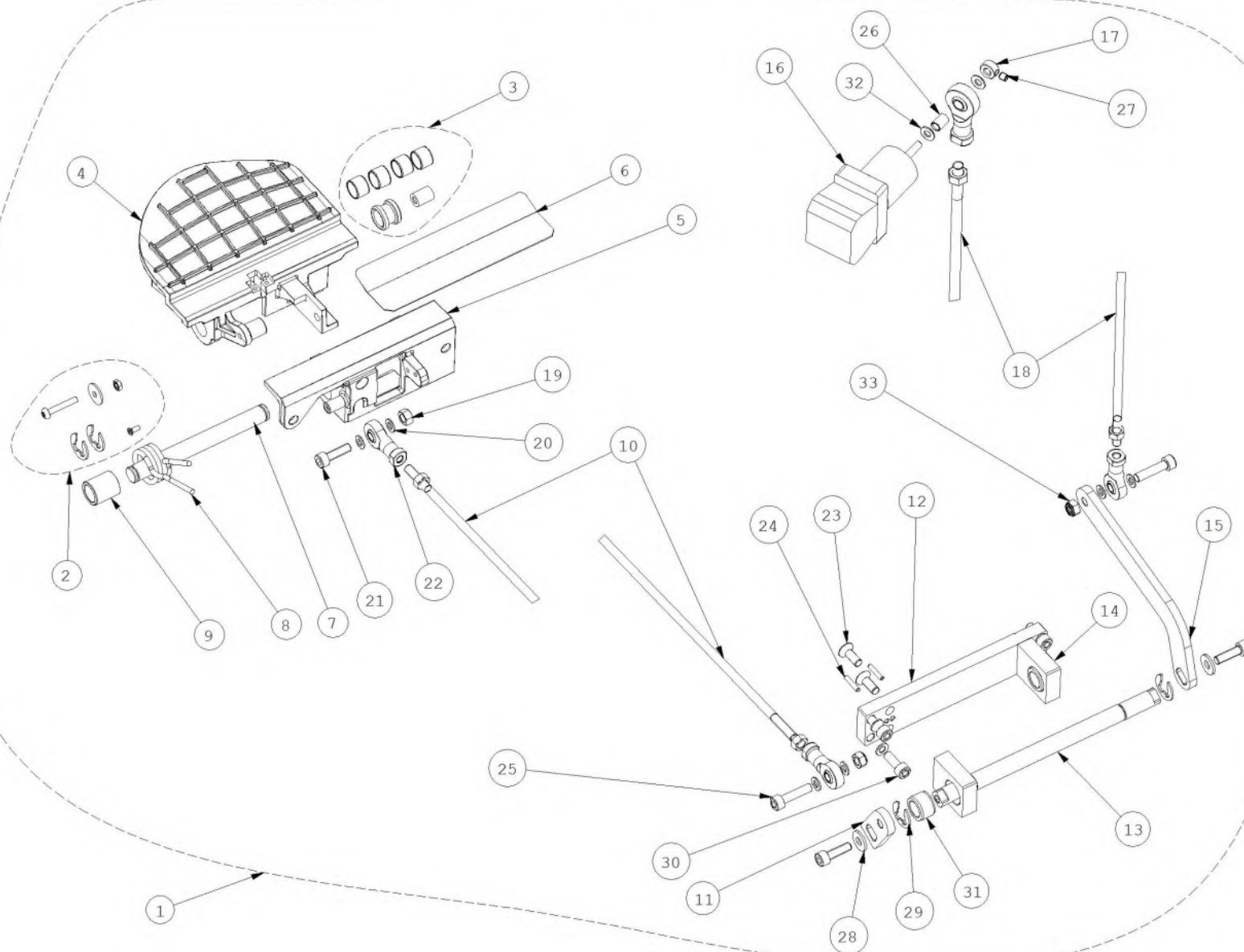
B = on request - sur demande - a petición

C = suggested - suggéré - sugerido



Pos	Code	Designation	Désignation	Designacìon	N.	Note	Nota	A	B	C
1	EAA0409G98A	ALU BRAKE PEDAL 2 SWITCHES	PEDALE FREIN ALUMINIUM 2 MICRO	PEDAL FRENO ALUMINIO 2 MICRO	1			X		X
2	EAK0315G94A	SCREWS UL ALU BRAKE PEDAL SET	KIT BOULONNERIE PEDALE FREIN UL	KIT PERNOS PEDAL FRENO UL	1	UL VERSION		X		X
3	EAK0306G92A	BUSHES FOR ALU BRAKE PEDAL SET	KIT DOUILLES PEDALE FREIN EN ALUMINIUM	KIT CASQUILLOS PEDAL FRENO DE ALUMINIO	1			X		
4	EAM0122G48A	MACHINED PEDAL	PEDALE USINÉ	PEDAL TRABALHADO	1				X	
5	EAM0181G72A	BRAKE PEDAL SUPPORT FINISHED	SUPPORT FINI	SOPORTE ACABADO	1				X	
6	2-07661A	MICRO SWITCH	MICRO-RUPTEUR	MICROINTERRUPTOR	2			X		X
7	EAM0046G39A	PEDAL PIN	GOUPILLE DE PÉDALE	PERNO DE ANCLAJE DEL PEDAL	1				X	
8	EAM0048G78A	SPRING, PEDAL SWITCH	RESSORT, PEDAL INTERRUPTEUR	MUELLE PEDAL INTERRUPTOR	1			X		X
9	EAM0051G96A	SPRING BUSHING	DOUILLE DE RESSORT	CASQUILLO DEL MUELLE	1				X	
10	EAK0315G95A	SCREWS FOR ACTUATOR ALU BRAKE PEDAL	KIT BOULONNERIE ACTIONNEUR PEDALE	KIT PERNOS ACTUADOR PEDAL	1				X	
11	EAA0344G15A	BOWDEN CABLE ASSY	CABLE PÉDALE	CABLE PEDAL	1			X		
12	EAS2153G49A	MICROSWITCH SUPPORT	SUPPORT MICRO-RUPTEUR	SOPORTE MICROINTERRUPTOR	1			X		
13	1-06768A	COMPRESSION SPRING	RESSORT À PRESSION	MUELLE DE COMPRESION	1			X		
14	EAM0153G24A	ACTUATOR	ACTIONNEUR	ACTUADOR	1				X	
15	EAL0443G72A	PROTECTIVE LABEL	ADHÉSIF PROTECTEUR	ADHESIVO DE PROTECCIÓN	1			X		X
16	EAM0140G21A	THREADED BUSH	DOUILLE FILETEE	CASQUILLO ROSCADO	1			X		

A = available - disponible - disponible **B** = on request - sur demande - a petición **C** = suggested - suggéré - sugerido



Pos	Code	Designation	Désignation	Designacìon	N.	Note	Nota	A	B	C
1	EAA0503G90A	UL BRAKE PEDAL FOR M CABINET	PEDALE FREIN CORPS MACHINE M	PEDAL FRENO CAJA M	1			X		
2	EAK0375G52A	SCREWS BRAKE PEDAL SET	KIT VIS PEDALE FREIN	KIT TORNILLOS PEDAL FRENO	1			X		
3	EAK0306G92A	BUSHES FOR ALU BRAKE PEDAL SET	KIT DOUILLES PEDALE FREIN EN ALUMINIUM	KIT CASQUILLOS PEDAL FRENO DE ALUMINIO	1			X		
4	EAM0180G23A	MACHINED UL PEDAL	PEDALE USINÉ	PEDAL TRABALHADO	1			X		
5	EAM0181G44A	BRAKE PEDAL SUPPORT FINISHED UL	SUPPORT PÉDALE DE FREIN	SOPORTE DEL PEDAL DE FRENO	1	UL VERSION MACHINED		X		
6	EAL0443G72A	PROTECTIVE LABEL	ADHÉSIF PROTECTEUR	ADHESIVO DE PROTECCIÓN	1			X		X
7	EAM0046G39A	PEDAL PIN	GOUPILLE DE PÉDALE	PERNO DE ANCLAJE DEL PEDAL	1				X	
8	EAM0048G78A	SPRING, PEDAL SWITCH	RESSORT, PEDAL INTERRUPTEUR	MUELLE PEDAL INTERRUPTOR	1			X		X
9	EAM0051G96A	SPRING BUSHING	DOUILLE DE RESSORT	CASQUILLO DEL MUELLE	1				X	
10	EAM0179G21A	PULLING BAR LOW M CABINET	TIRANT	TIRANTE	1	LOW M CABINET SMALL		X		
11	EAM0179G23A	CONROD	BIELLE	BIELA	1			X		
12	EAM0180G21A	SHAFT SUPPORT BASE	BASE PORTE-ARBRE	BASE SUJECIÓN EJE	1			X		
13	EAM0179G24A	SHAFT	ARBRE	EJE	1			X		
14	EAM0179G20A	SHAFT SUPPORT	PORTE-ARBRE	SUJECIÓN EJE	2			X		
15	EAM0179G25A	CONROD	BIELLE	BIELA	1	BIG		X		
16	2-13658A	JOYSTICK, 2 POSITIONS, 48MM SHAFT	JOYSTICK 2 POSITIONS, ARBRE 48MM	JOYSTICK 2 POSICIONES, ÁRBOL 48MM	1			X		
17	EAM0180G22A	JOYSTICK CONNECTION	RACCORDLEMENT JOYSTICK	CONEXIÓN JOYSTICK	1			X		

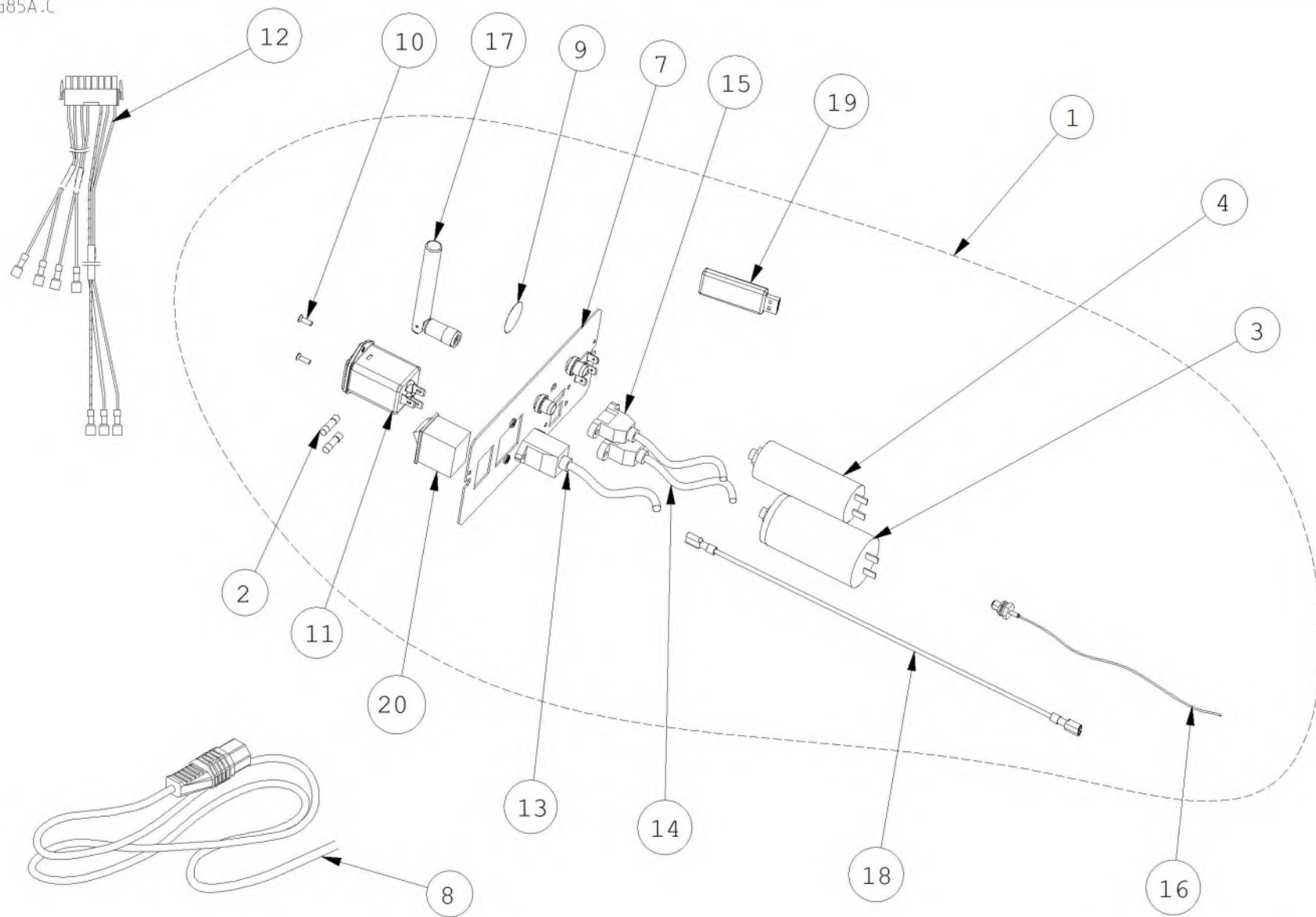
A = available - disponible - disponible **B** = on request - sur demande - a petición **C** = suggested - suggéré - sugerido

Pos	Code	Designation	Désignation	Designacìon	N.	Note	Nota	A	B	C
18	EAM0179G26A	PULLING BAR UPPER M CABINET	TIRANT	TIRANTE	1	UPPER		X		
19	1-11633A	NUT-HEX. M6 6S	ECROU M6 6S	TUERCA M6 CL.8 BR-MEDIO	5			X		
20	1-9741	WASHER d.5	RONDELLE d.5	ARANDELA D.5 GALVANIZ.	10			X		
21	1-16409	Screw	Vis	Tornillo	2			X		
22	1-11963A	ROD BEARING M6	COUSSINET	COJINETE	4			X		
23	1-22003A	SCREW 6X16 10K	VIS FHc	TORNILLO TSEI	4			X		
24	1-22052A	CYLINDRICAL PIN D3X16 UNI EN 22338	GOUJON CYLINDRIQUE D3X16 UNI EN 22338	VASTAGO CILINDRICO D3X16 UNI EN 22338	4			X		
25	1-16509A1	SCREW TCEI 6X25 8G	VIS CHc	TORNILLO TCEI	3			X		
26	EAM0181G82A	JOYSTICK BUSHING	DOUILLE JOYSTICK	CASQUILLO JOYSTICK	1			X		
27	1-38610	SCREW	VIS	TORNILLO	1	M4 X 4 DIN 916 ISO 4		X		
28	1-16641A	Washer plain	Rondelle plate	Arandela plana	2			X		
29	1-18477A	RING-SNAP d.10	BAGUE DE BUTEE d.10	ANILLO DE TOPE RAD.D.10	2			X		
30	1-16309	SCREW HEX SOCKET M 6X16	VIS CHc	TORNILLO TCEI	4				X	
31	1-17365A	BUSHING	DOUILLE	CASQUILLO	2	DIN 1850		X		
32	1-9641	WASHER	RONDELLE	ARANDELA	2			X		
33	1-9933	NUT, PREVAILING TORQUE M6	ECROU M6 AUTO-BL.	TUERCA M6 AUT. BAS.CL.6	2			X		

A = available - disponible - disponible

B = on request - sur demande - a petición

C = suggested - suggeré - sugerido



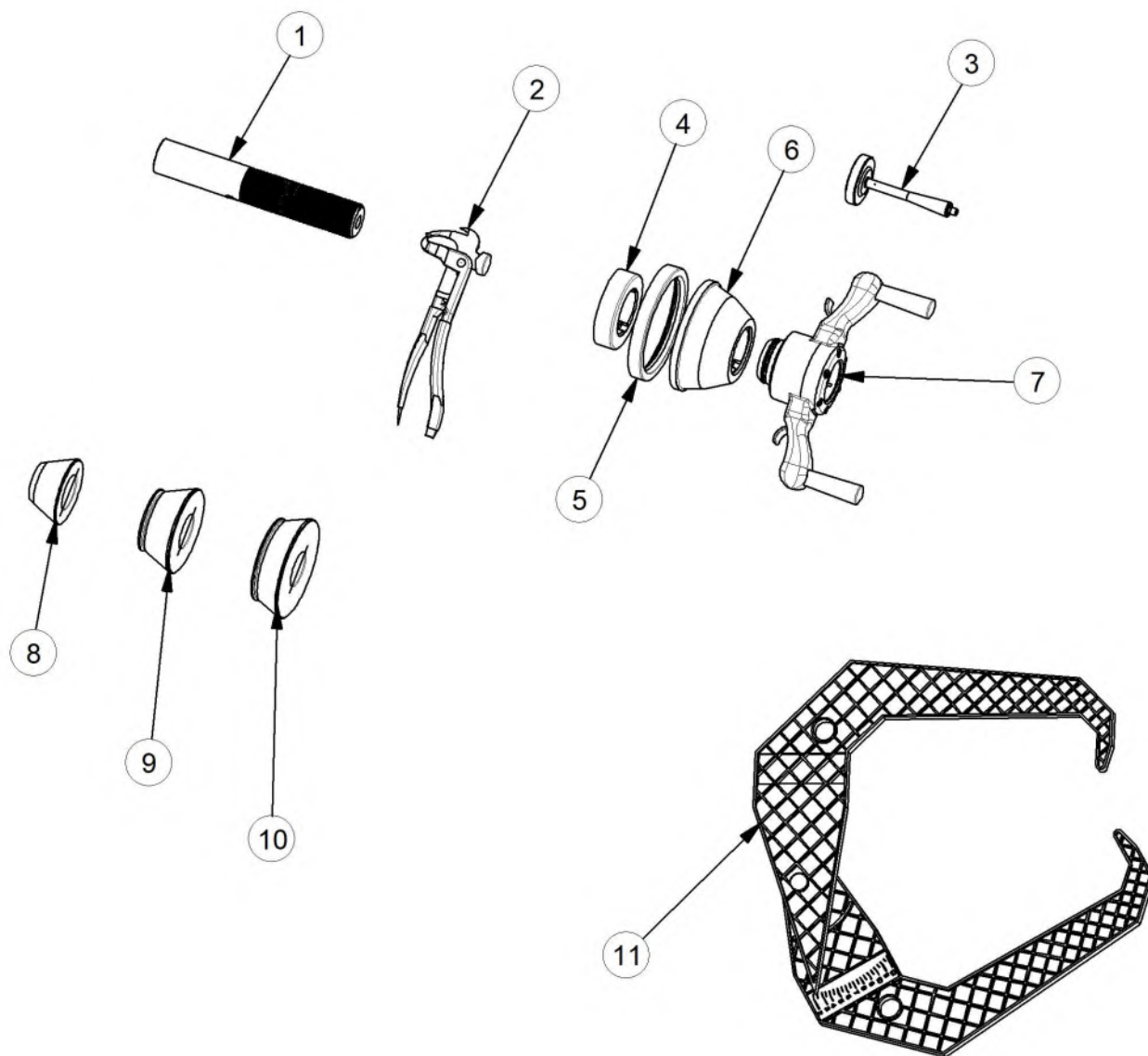
Pos	Code	Designation	Désignation	Designacìon	N.	Note	Nota	A	B	C
1	EAA0458G42A	ASSY POWER INLET	GROUPE ENTR. ALIMENTATION	GRUPO ENTRADA ALIMENT.	1			X		
2	2-21251A	FUSE	FUSIBLE	FUSIBLE	2	6,3A(T) 5x20		X		X
3	2-01529A	CAPACITOR	CONDENSATEUR	CONDENSADOR	1	20µF 400V		X		X
4	2-01429A	CAPACITOR	CONDENSATEUR	CONDENSADOR	1	10µF 400V		X		X
7	EAA0458G44A	POWER INLET PLATE GROUP	ENSEMBLE 'TÔLE CONNECTEUR ALIMENTATI	CONJUNTO 'CHAPA CONECTOR ALIMENTACIÓ	1	WF		X		
8	EAW0240G14A	POWER SUPPLY CABLE	CABLE SECTEUR	CABLE ELÉCTRICO	1	NA Version		X		
8	EAW0240G13A	POWER SUPPLY CABLE	CABLE SECTEUR	CABLE ELÉCTRICO	1	UK		X		
8	6-05221A	POWER CORD EUROPEAN	CABLE SECTEUR EUROPE	CABLE ELECTRICO	1	European		X		
8	EAX0039J00A	POWER SUPPLY CABLE	CABLE SECTEUR	CABLE ELÉCTRICO	1	JAPAN PLUG		X		
9	8-23662A	LABEL	PLAQUE CONNEXION SECTEUR	PLACA CONEXIÓN DE RED	1				X	
10	1-11103	SCREW	VIS	TORNILLO	2	M3X10 FLAT HEAD		X		
11	2-68948A	FILTERED POWER ENTRY MODULE	MODULE D'ENTRÉE SECTEUR	MÓDULO DE LA ENTRADA DE LA ENERGÍA	1			X		X
12	EAW0283G51A	WHEEL BALANCER WIRING HARNESS UL	CABLAGE EQUILIBREUSE UL	CABLEADO EQUILIBRADORA UL	1			X		
13	6-14122A	PANEL-MOUNT ETH RJ45 LONG CABLE	CABLE RJ45 LONG PUPITRE	CABLE RJ45 LONGITUD DESDE PANEL	1			X		
14	6-14722A	PANEL-MOUNT USB TYPE-B LONG CABLE	CABLE USB B LONG PUPITRE	CABLE USB B LONGITUD DESDE PANEL	1	LONG		X		
15	6-13922A	PANEL-MOUNT USB TYPE-A LONG CABLE	CABLE USB LONG A PUPITRE	CABLE USB LONGITUD A/DESDE PANEL	1	LONG		X		
16	6-14322A	LONG COAXIAL CABLE FOR WI-FI ANTENNA	CABLE COAXIAL LONG ANTENNE WI-FI	CABLE COAXIAL LONGITUD PARA ANTENA WI-	1			X		X

A = available - disponible - disponible

B = on request - sur demande - a petición

C = suggested - suggeré - sugerido

EAZ0088G16A

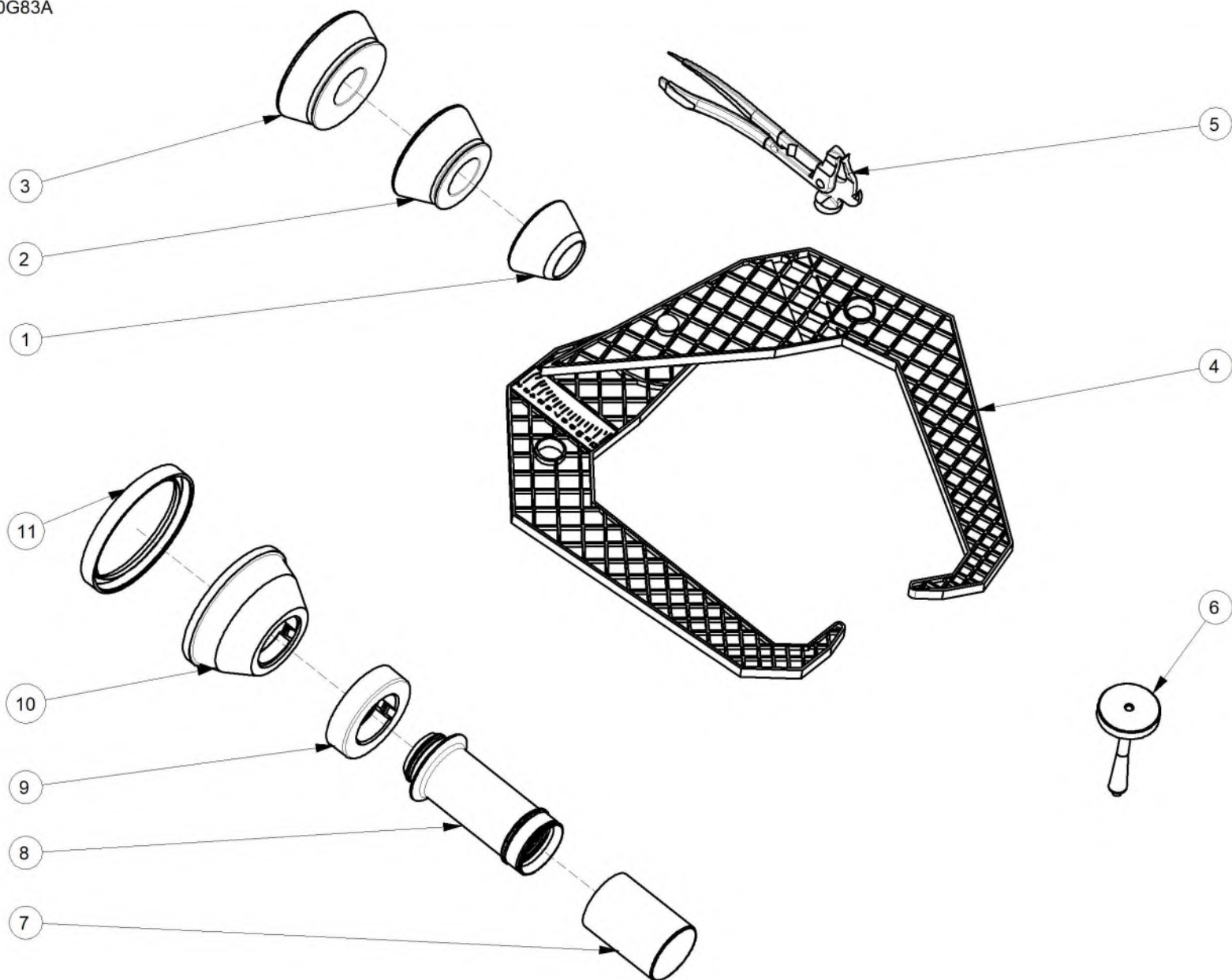


04/2014

Pos	Code	Designation	Désignation	Designacìon	N.	Note	Nota	A	B	C
1	EAM0021D90A	THREADED SHAFT TR40x4	ARBRE FILETE 40x4	ÁRBOL ROSCADO 40X4	1			X		
2	8-04250A	PLIERS, WHEEL WEIGHTS	PINCE POUR MASSES	ALICATES PARA PESOS	1			X		
3	EAM0005D40A	CALIBRATION WEIGHT 2	BRAS ETALON REGLAGE HWT	BRAZO CALIBRE CALIBRADO HWT	1			X		
4	EAC0058D08A	PRESSURE RING	JOINT PRESSION	ANILLO DE PRESIÓN	1			X		
5	EAC0058D15A	RUBBER PROTECTION RING	PROTECTION POUR FLASQUE CONIQUE	PROTECCIÓN PARA BRIDA CÓNICA	1				X	
6	EAC0058D07A	PRESSURE CUP	FLASQUE CONIQUE A PRESSION	BRIDA CÓNICA A PRESIÓN	1			X		
7	EAA0263G66A	QUICKNUT, DIAMETER 40MM	BAGUE RAPIDE D.40	ABRAZADERA RÁPIDA D. 40	1			X		
8	EAM0005D23A	CONE 1 ECON D.40	CONE 1 ECON D.40	CONO 1 ECON D. 40	1			X		
9	EAM0005D24A	CONE 2 ECON D.40	CONE 2 ECON D.40	CONO 2 ECON D. 40	1			X		
10	EAM0005D25A	CONE 4 ECON D.40	CONE 4 ECON D.40	CONO 4 ECON D. 40	1			X		
11	EAA0247G21A	CALIPER RIM WIDTH	GROUPE ETALON LARGEUR ROUES	GRUPO CALIBRE ANCHO RUEDAS	1			X		

A = available - disponible - disponible **B** = on request - sur demande - a petición **C** = suggested - suggeré - sugerido

EAZ0070G83A



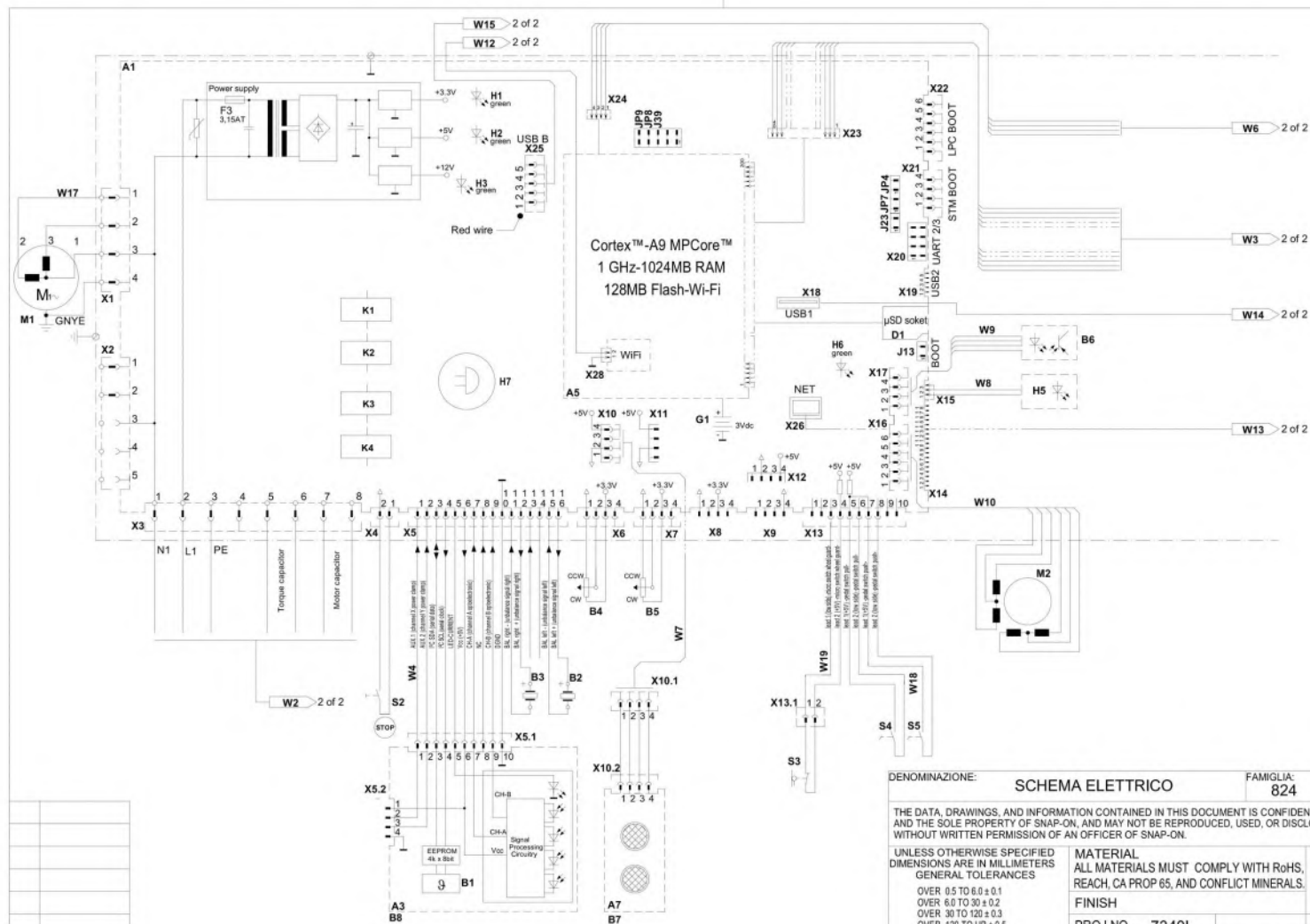
02/2014

Pos	Code	Designation	Désignation	Designaciòn	N.	Note	Nota	A	B	C
1	EAM0005D23A	Cone	Cône	Cono	1	N.1 "ECON" D40 D.48 - 80 mm		X		
2	EAM0005D24A	Cone	Cône	Cono	1	N.2 "ECON" D40 D.73 - 94 mm		X		
3	EAM0005D25A	Cone	Cône	Cono	1	N.4 "ECON" D40 D.94 - 115 mm		X		
4	EAA0247G21A	CALIPER RIM WIDTH	GROUPE ETALON LARGEUR ROUES	GRUPO CALIBRE ANCHO RUEDAS	1	B100, Geo 7100		X		
5	8-04250A	PLIERS, WHEEL WEIGHTS	PINCE POUR MASSES	ALICATES PARA PESOS	1			X		
6	EAM0005D40A	CALIBRATION WEIGHT	MASSE D'ÉTALONNAGE	PESO DE CALIBRACIÓN	1			X		
7	EAC0058D69A	Protective sleeve	Douille de protection	Manguito de protección	1			X		
8	EAM0086G86A	Clamping sleeve	Douille de serrage	Manguito de bloqueo	1			X		X
9	EAC0058D08A	Pressure ring	Bague de serrage	Anillo de empuje	1			X		
10	EAC0058D07A	Clamping head	Tête de serrage	Caja de presión	1			X		
11	EAC0058D15A	Protective ring	Bague de protection	Anillo protector	1			X		

A = available - disponible - disponible

B = on request - sur demande - a petición

C = suggested - suggeré - sugerido



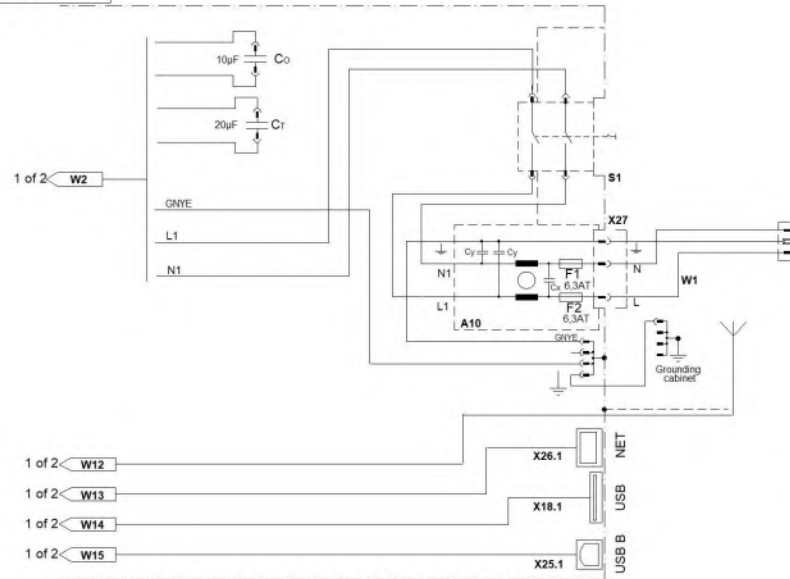
B 20G0100
A 15G0437
REVPCN HISTORY

EEWB774ALWD
SHEET 1 OF 2

DENOMINAZIONE: SCHEMA ELETTRICO		FAMIGLIA: 824	COD. GS: EEWB774ALWD
THE DATA, DRAWINGS, AND INFORMATION CONTAINED IN THIS DOCUMENT IS CONFIDENTIAL AND THE SOLE PROPERTY OF SNAP-ON, AND MAY NOT BE REPRODUCED, USED, OR DISCLOSED WITHOUT WRITTEN PERMISSION OF AN OFFICER OF SNAP-ON.		COPYRIGHT 2015	
UNLESS OTHERWISE SPECIFIED DIMENSIONS ARE IN MILLIMETERS GENERAL TOLERANCES		MATERIAL ALL MATERIALS MUST COMPLY WITH RoHS, REACH, CA PROP 65, AND CONFLICT MINERALS.	
OVER 0.5 TO 6.0 ± 0.1		FINISH	
OVER 6.0 TO 30 ± 0.2		PROJ NO 7340L	
OVER 30 TO 120 ± 0.3		DR N. Castagnoli 2015.12.09	
OVER 120 TO UP ± 0.5		CK	
ANGULAR ± 1°		APP	
HOLES ± 0.1		QUALITY DOC	
SHEET METAL ± 0.5		SUPERCEDES	
SURFACE: ISO 1302		RELEASE REV B	
FIRST ANGLE PROJECTION		EEWB774ALWD SHEET 1 OF 2	

REV	CHANGES - MODIFICHE	DATE	NAME
B	Updated wiring connections.	2020.05.22	F. Cagnolati
A	Production release	2015.12.09	N. Castagnoli

EEWB774ALWD
SHEET 2 OF 2

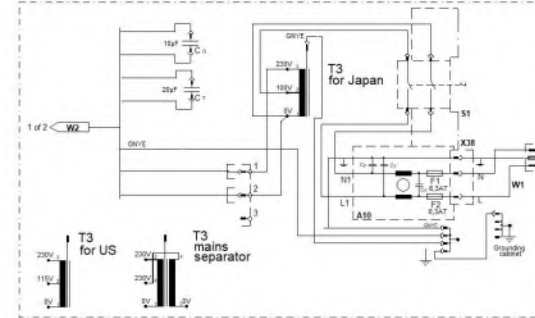


- A1 LCD touch board board
A3 Opto electronic board
A5 Main processor board
A7 Sonar board
A10 Power supply module
B1 Temperature sensor
B2 Rear piezo sensor
B3 Front piezo sensor
B4 Offset gauge, potentiometer (10K) with cable
B5 Diameter gauge, potentiometer (10K) with cable
B6 Laser pointer position sensor
B7 Ultrasonic sensor
B8 Incremental encoder main shaft
Co Motor capacitor 10uF
CT Torque capacitor 20uF
D1 Software update socket
F1 Miniature fuse 6.3AT
F2 Miniature fuse 6.3AT
F3 Miniature fuse 3.15AT
G1 Coin cell battery 3V
H1 Green LED - 3.3V
H2 Green LED - 5V
H3 Green LED - 12V
H4 10.1"LCD with touch
H5 Laser pointer
H6 Green service LED
H7 Buzzer

- K1 Forward run relay
K2 Reverse run relay
K3 Torque capacitor CT relay
K4 Inner rim side lighting relay
M1 Motor
M2 Laser pointer stepper motor
S1 Main switch
S2 STOP push button
S3 Wheel guard switch
S4 Pedal switches
S5 Pedal switches
T3 Optional transformers
W1 Power cord
W2 LCD touch board power supply cable
W3 LCD LVDS signals cable
W4 Vibratory system harness
W6 Sonar cable
W8 Laser pointer cable
W9 End stop laser pointer cable
W10 Stepper motor cable
W12 Cable with Wi-Fi antenna
W13 NET patch cable
W14 USB patch cable
W15 Female USB cable
W17 Motor cable
W18 Pedals cable
W19 Wheelguard extension wire

- X1 Motor connector
X2 Electromagnetic brake connector
X3 Power supply/motor capacitor connector
X4 Stop push button connector
X5-5.1-5.2 Vibratory system connectors
X6 Offset gauge connector
X7 Diameter gauge connector
X8 Width gauge connector
X9 Serial communication connector
X10-10.1-10.2 IIC-BUS sonar connectors
X11 IIC-BUS lift connectors
X12 IIC-BUS connector
X13-13.1 Wheelguard/pedal connector
X14 Scanner FFC connector
X15 Laser pointer connector
X16 Stepper motor connector
X17 Laser pointer end stop connector
X18-18.1 USB1 host connectors
X19 USB2 o/g connector
X20 Factory use only connector
X21 Factory use only connector
X22 Factory use only connector
X23 LCD LVDS signals connector
X24 LCD touch screen connector
X25-25.1 USB to UART interface connector
X26-26.1 Ethernet connector
X27 Power inlet connector
X28 Wi-Fi antenna connector

T3 optional

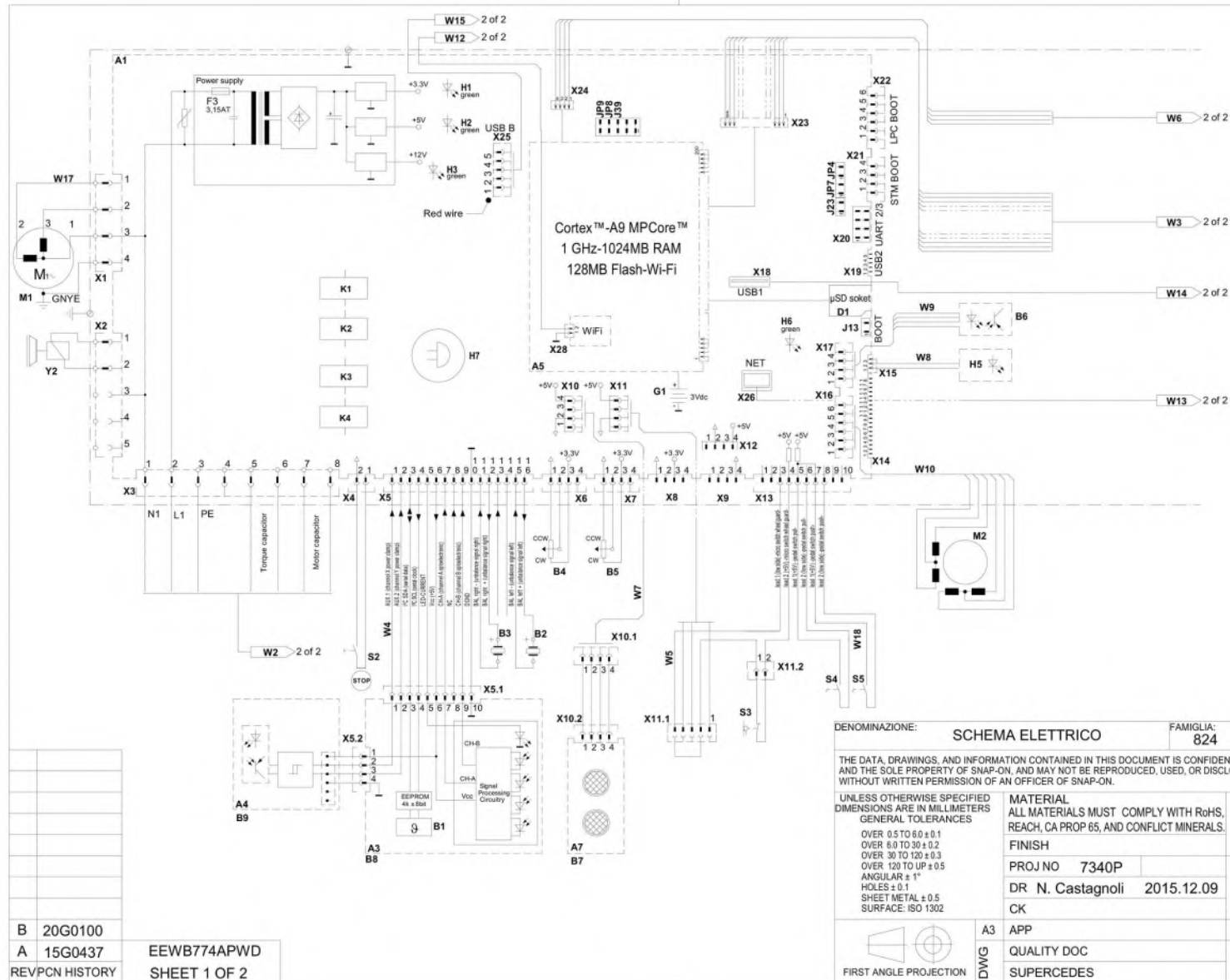


1 of 2 W3

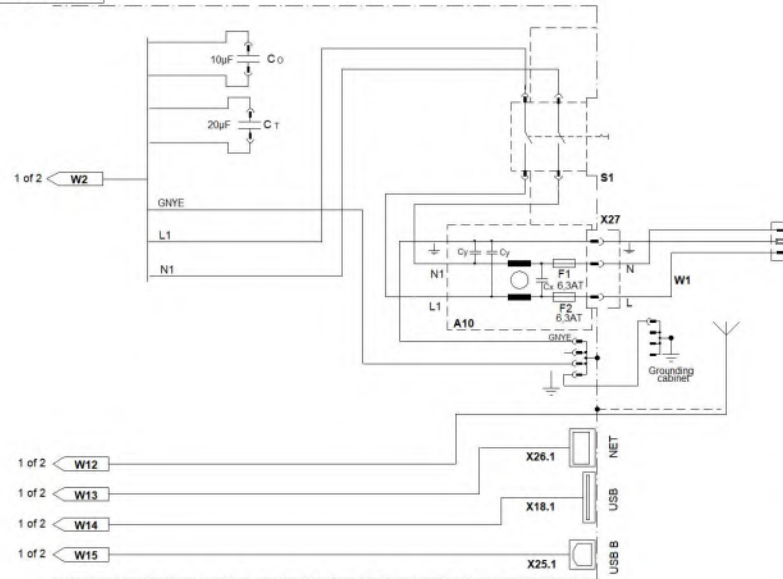
1 of 2 W6



DENOMINAZIONE:	SCHEMA ELETTRICO	FAMIGLIA:	824	COD. GS:	EEWB774ALWD
THE DATA, DRAWINGS, AND INFORMATION CONTAINED IN THIS DOCUMENT IS CONFIDENTIAL AND THE SOLE PROPERTY OF SNAP-ON, AND MAY NOT BE REPRODUCED, USED, OR DISCLOSED WITHOUT WRITTEN PERMISSION OF AN OFFICER OF SNAP-ON.					COPYRIGHT 2015
UNLESS OTHERWISE SPECIFIED DIMENSIONS ARE IN MILLIMETERS GENERAL TOLERANCES		MATERIAL		Snap-on	
OVER 0.5 TO 6.0 ± 0.1 OVER 6.0 TO 30 ± 0.2 OVER 30 TO 120 ± 0.3 OVER 120 TO UP ± 0.5 ANGULAR ± 1° HOLES ± 0.1 SHEET METAL ± 0.5 SURFACE: ISO 1302		FINISH		CORREGGIO, ITALY	
		PROJ NO 7340L		WIRING DIAGRAM	
		DR N. Castagnoli 2015.12.09			
		CK			
FIRST ANGLE PROJECTION		A3 APP		RELEASE	
DWG		QUALITY DOC		REV B	
		SUPERCEDES		EEWB774ALWD	
				SHEET 2 OF 2	



EEWB774APWD
SHEET 2 OF 2

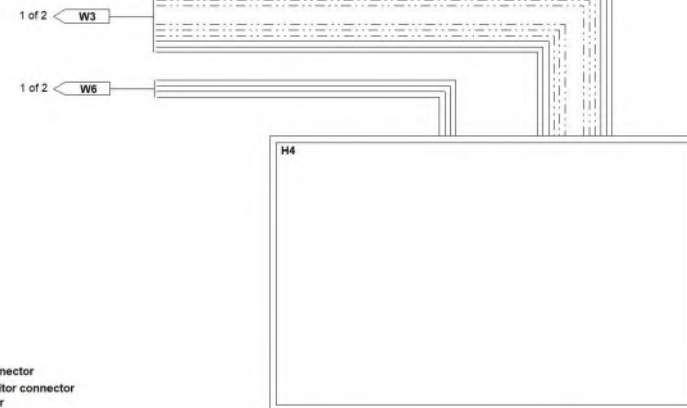
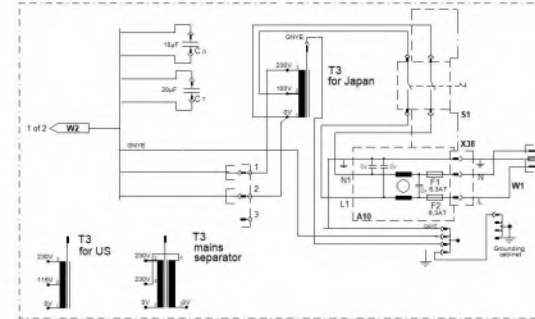


A1 LCD touch board
A3 Opto electronic board
A4 Power clamp encoder board
A5 Main processor board
A7 Sonar board
A10 Power supply module
B1 Temperature sensor
B2 Rear piezo sensor
B3 Front piezo sensor
B4 Offset gauge, potentiometer (10K) with cable
B5 Diameter gauge, potentiometer (10K) with cable
B6 Laser pointer position sensor
B7 Ultrasonic sensor
B8 Incremental encoder main shaft
B9 Incremental encoder power clamp
C0 Motor capacitor 10uF
C1 Torque capacitor 20uF
D1 Software update socket
F1 Miniature fuse 6.3AT
F2 Miniature fuse 6.3AT
F3 Miniature fuse 3.15AT
G1 Coin cell battery 3V
H1 Green LED - 3.3V
H2 Green LED - 5V
H3 Green LED - 12V
H4 10.1"LCD with touch
H5 Laser pointer
H6 Green service LED
H7 Buzzer

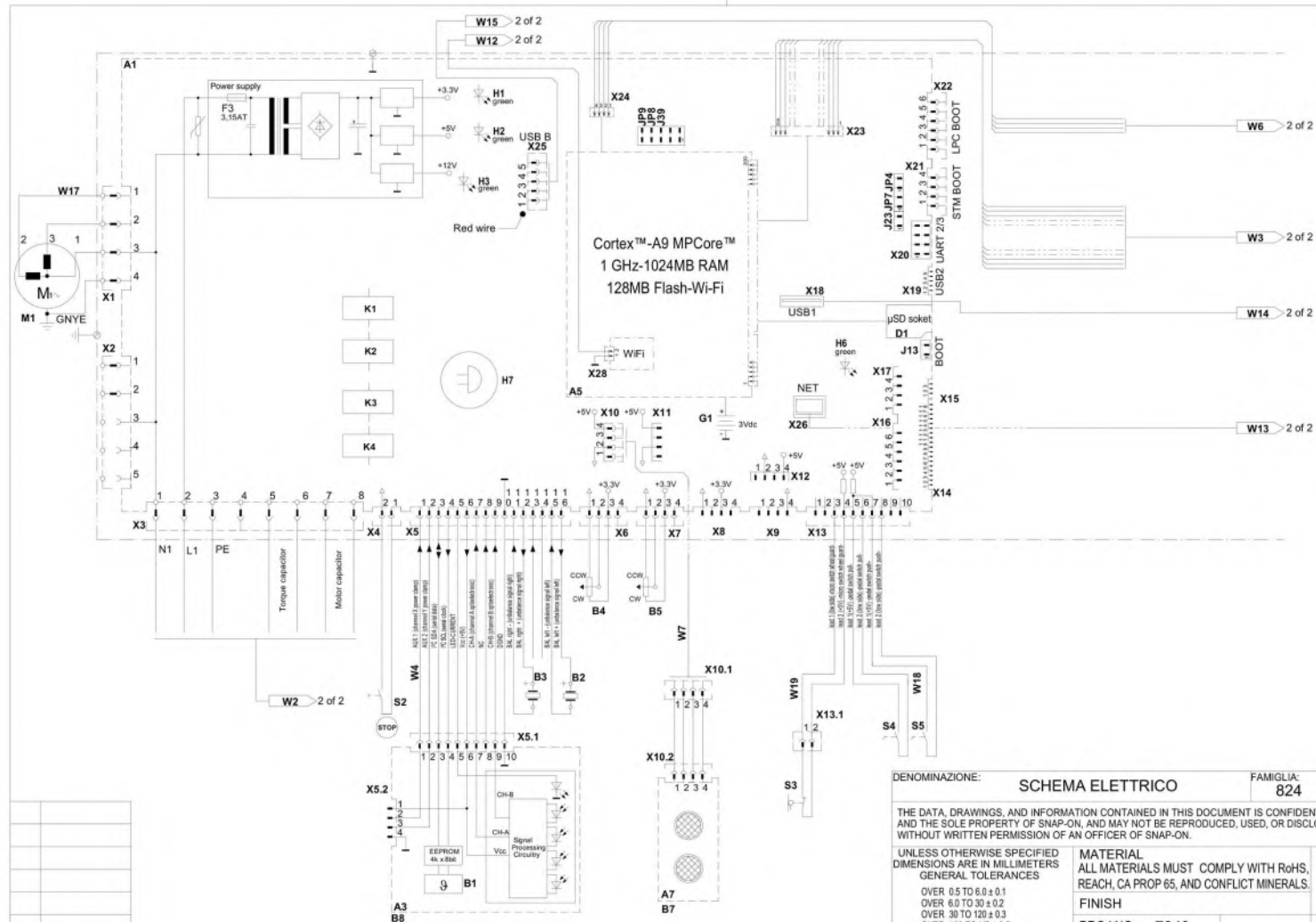
K1 Forward run relay
K2 Reverse run relay
K3 Torque capacitor CT relay
K4 Inner rim side lighting relay
M1 Motor
M2 Laser pointer stepper motor
S1 Main switch
S2 STOP push button
S3 Wheel guard switch
S4 Pedal switches
S5 Pedal switches
T3 Optional transformers
W1 Power cord
W2 LCD touch board power supply cable
W3 LCD LVDS signals cable
W4 Vibratory system harness
W5 Stand-alone lift enabling cable
W6 LCD touch screen cable
W7 Sonar cable
W8 Laser pointer cable
W9 End stop laser pointer cable
W10 Stepper motor cable
W11 Cable with Wi-Fi antenna
W12 NET patch cable
W13 USB patch cable
W14 Female USB cable
W15 Motor cable
W16 Pedals cable

X1 Motor connector
X2 Electromagnetic brake connector
X3 Power supply/motor capacitor connector
X4 Stop push button connector
X5-5.1-5.2 Vibratory system connectors
X6 Offset gauge connector
X7 Diameter gauge connector
X8 Width gauge connector
X9 Serial communication connector
X10-10.1-10.2 IIC-BUS sonar connectors
X11-11.1-11.2 IIC-BUS lift connectors
X12 IIC-BUS connector
X13 Wheelguard/pedal connector
X14 Scanner FFC connector
X15 Laser pointer connector
X16 Stepper motor connector
X17 Laser pointer end stop connector
X18-18.1 USB1 host connectors
X19 USB2 otg connector
X20 Factory use only connector
X21 Factory use only connector
X22 Factory use only connector
X23 LCD LVDS signals connector
X24 LCD touch screen connector
X25-25.1 USB to UART interface connector
X26-26.1 Ethernet connector
X27 Power inlet connector
X28 Wi-Fi antenna connector
Y2 Electromagnetic brake (30Nm)

T3 optional



DENOMINAZIONE:	SCHEMA ELETTRICO	FAMIGLIA:	824	COD. GS.	EEWB774APWD
THE DATA, DRAWINGS, AND INFORMATION CONTAINED IN THIS DOCUMENT IS CONFIDENTIAL AND THE SOLE PROPERTY OF SNAP-ON, AND MAY NOT BE REPRODUCED, USED, OR DISCLOSED WITHOUT WRITTEN PERMISSION OF AN OFFICER OF SNAP-ON.					COPYRIGHT 2015
UNLESS OTHERWISE SPECIFIED DIMENSIONS ARE IN MILLIMETERS GENERAL TOLERANCES		MATERIAL		Snap-on	
OVER 0.5 TO 6.0 ± 0.1 OVER 6.0 TO 30 ± 0.2 OVER 30 TO 120 ± 0.3 OVER 120 TO UP ± 0.5 ANGULAR ± 1° HOLES ± 0.1 SURFACE: ISO 1302		FINISH		CORREGGIO, ITALY	
		PROJ NO 7340P		DR N. Castagnoli 2015.12.09	
		CK		WIRING DIAGRAM	
		A3 APP		RELEASE REV B	
		QUALITY DOC		EEWB774APWD	
		SUPERCEDES		SHEET 2 OF 2	

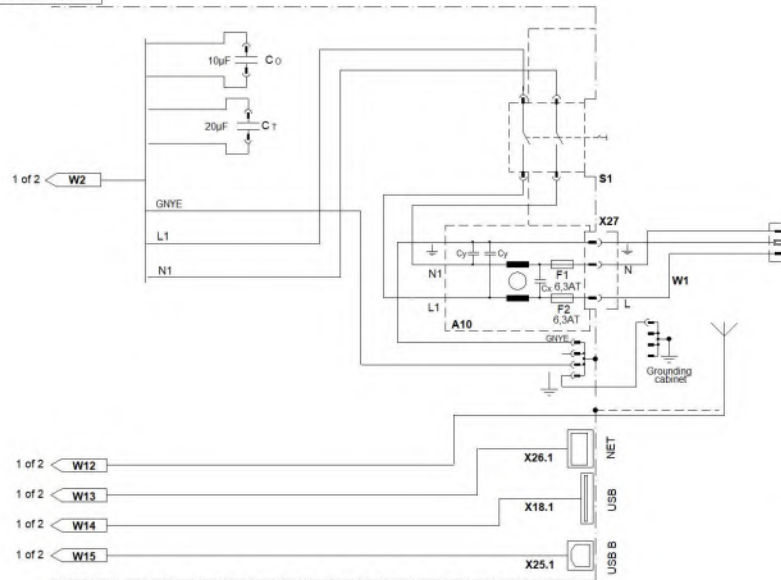


B	20G0100	
A	15G0437	EEWB774AWD
REVPCN HISTORY		SHEET 1 OF 2

REV	CHANGES - MODIFICHE	DATE	NAME
B	Updated wiring connections.	2020.05.22	F. Cagnolati
A	Production release	2015.12.09	N. Castagnoli

DENOMINAZIONE: SCHEMA ELETTRICO		FAMIGLIA: 824	COD. GS: EEWB774AWD
THE DATA, DRAWINGS, AND INFORMATION CONTAINED IN THIS DOCUMENT IS CONFIDENTIAL AND THE SOLE PROPERTY OF SNAP-ON, AND MAY NOT BE REPRODUCED, USED, OR DISCLOSED WITHOUT WRITTEN PERMISSION OF AN OFFICER OF SNAP-ON.			COPYRIGHT 2015
UNLESS OTHERWISE SPECIFIED DIMENSIONS ARE IN MILLIMETERS GENERAL TOLERANCES		MATERIAL ALL MATERIALS MUST COMPLY WITH RoHS, REACH, CA PROP 65, AND CONFLICT MINERALS.	
OVER 0.5 TO 6.0 ± 0.1		FINISH	
OVER 6.0 TO 30 ± 0.2		PROJ NO 7340	
OVER 30 TO 120 ± 0.3		DR N. Castagnoli 2015.12.09	
OVER 120 TO UP ± 0.5		CK	
ANGULAR ± 1°		RELEASE REV B	
HOLES ± 0.1		EEWB774AWD	
SHEET METAL ± 0.5		SHEET 1 OF 2	
SURFACE: ISO 1302			
FIRST ANGLE PROJECTION			
A3 APP			
DWG QUALITY DOC			
SUPERCEDES			

EEWB774AWD
SHEET 2 OF 2

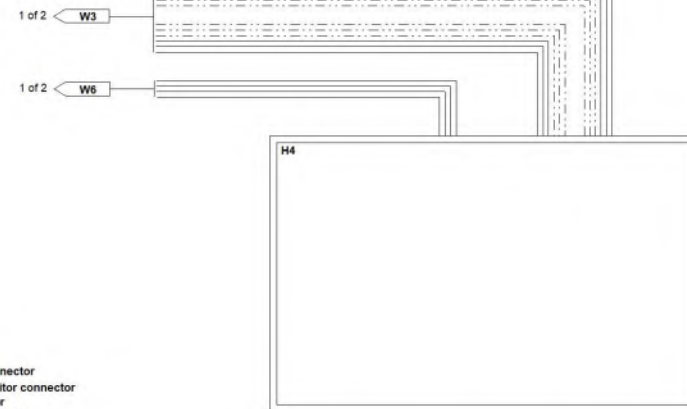
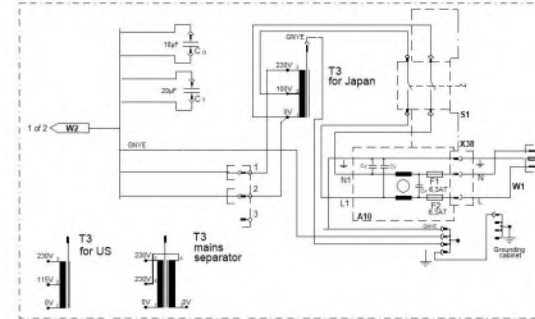




- A1 LCD touch board board
A3 Opto electronic board
A5 Main processor board
A7 Sonar board
A10 Power supply module
B1 Temperature sensor
B2 Rear piezo sensor
B3 Front piezo sensor
B4 Offset gauge, potentiometer (10K) with cable
B5 Diameter gauge, potentiometer (10K) with cable
B7 Ultrasonic sensor
B8 Incremental encoder main shaft
Co Motor capacitor 10uF
Ct Torque capacitor 20uF
D1 Software update socket
F1 Miniature fuse 6.3AT
F2 Miniature fuse 6.3AT
F3 Miniature fuse 3.15AT
G1 Coin cell battery 3V
H1 Green LED - 3.3V
H2 Green LED - 5V
H3 Green LED - 12V
H4 10.1"LCD with touch
H6 Green service LED
H7 Buzzer

- K1 Forward run relay
K2 Reverse run relay
K3 Torque capacitor CT relay
K4 Inner rim side lighting relay
M1 Motor
S1 Main switch
S2 STOP push button
S3 Wheel guard switch
S4 Pedal switches
S5 Pedal switches
T3 Optional transformers
W1 Power cord
W2 LCD touch board power supply cable
W3 LCD LVDS signals cable
W4 Vibratory system harness
W6 LCD touch screen cable
W7 Sonar cable
W12 Cable with Wi-Fi antenna
W13 NET patch cable
W14 USB patch cable
W15 Female USB cable
W17 Motor cable
W18 Pedals cable
W19 Wheelguard extension cable

- X1 Motor connector
X2 Electromagnetic brake connector
X3 Power supply/motor capacitor connector
X4 Stop push button connector
X5-5.1-5.2 Vibratory system connectors
X6 Offset gauge connector
X7 Diameter gauge connector
X8 Width gauge connector
X9 Serial communication connector
X10-10.1-10.2 IIC-BUS sonar connectors
X11 IIC-BUS lift connectors
X12 IIC-BUS connector
X13-13.1 Wheelguard/pedal connector
X14 Scanner FFC connector
X15 Laser pointer connector
X16 Stepper motor connector
X17 Laser pointer end stop connector
X18-18.1 USB1 host connectors
X19 USB2 otg connector
X20 Factory use only connector
X21 Factory use only connector
X22 Factory use only connector
X23 LCD LVDS signals connector
X24 LCD touch screen connector
X25-25.1 USB to UART interface connector
X26-26.1 Ethernet connector
X27 Power inlet connector
X28 Wi-Fi antenna connector

T3 optional



DENOMINAZIONE:		SCHEMA ELETTRICO		FAMIGLIA:		824		COD. GS:		EEWB774AWD	
THE DATA, DRAWINGS, AND INFORMATION CONTAINED IN THIS DOCUMENT IS CONFIDENTIAL AND THE SOLE PROPERTY OF SNAP-ON, AND MAY NOT BE REPRODUCED, USED, OR DISCLOSED WITHOUT WRITTEN PERMISSION OF AN OFFICER OF SNAP-ON.										COPYRIGHT 2015	
UNLESS OTHERWISE SPECIFIED DIMENSIONS ARE IN MILLIMETERS GENERAL TOLERANCES				MATERIAL							
OVER 0.5 TO 6.0 ± 0.1 OVER 6.0 TO 30 ± 0.2 OVER 30 TO 120 ± 0.3 OVER 120 TO UP ± 0.5 ANGULAR ± 1° HOLES ± 0.1 SHEET METAL ± 0.5 SURFACE: ISO 1302				FINISH				CORREGGIO, ITALY			
				PROJ NO		7340					
				DR		N. Castagnoli		2015.12.09		WIRING DIAGRAM	
				CK							
		A3		APP				RELEASE		REV B	
FIRST ANGLE PROJECTION		DWG		QUALITY DOC				EEWB774AWD		SHEET 2 OF 2	
				SUPERCEDES							

Notice: The information contained in this document is subject to change without notice. **Snap-on Equipment** makes no warranty with regard to present documentation. **Snap-on Equipment** shall not be liable for errors contained herein or for incidental consequential damages in connection with furnishings, performance, or use of this material.

This document contains proprietary information which is protected by copyright and patents. All rights are reserved. No part of this document may be photocopied, reproduced, or translated without prior written consent of Snapon Equipment.

- Manufacturing Facilities -
· Snap-on Equipment SrL · Via Per Carpi 33 - 42015 Correggio RE - Italy ·
· Snap-on Equipment · 309 Exchange Avenue Conway, Arkansas 72032 ·
- Technical alterations reserved - Refer to the data plates for effective manufacturing location -