

Geodyna

2300C / 2300CM / 2350C

Spare Parts Manual

HOFMANN

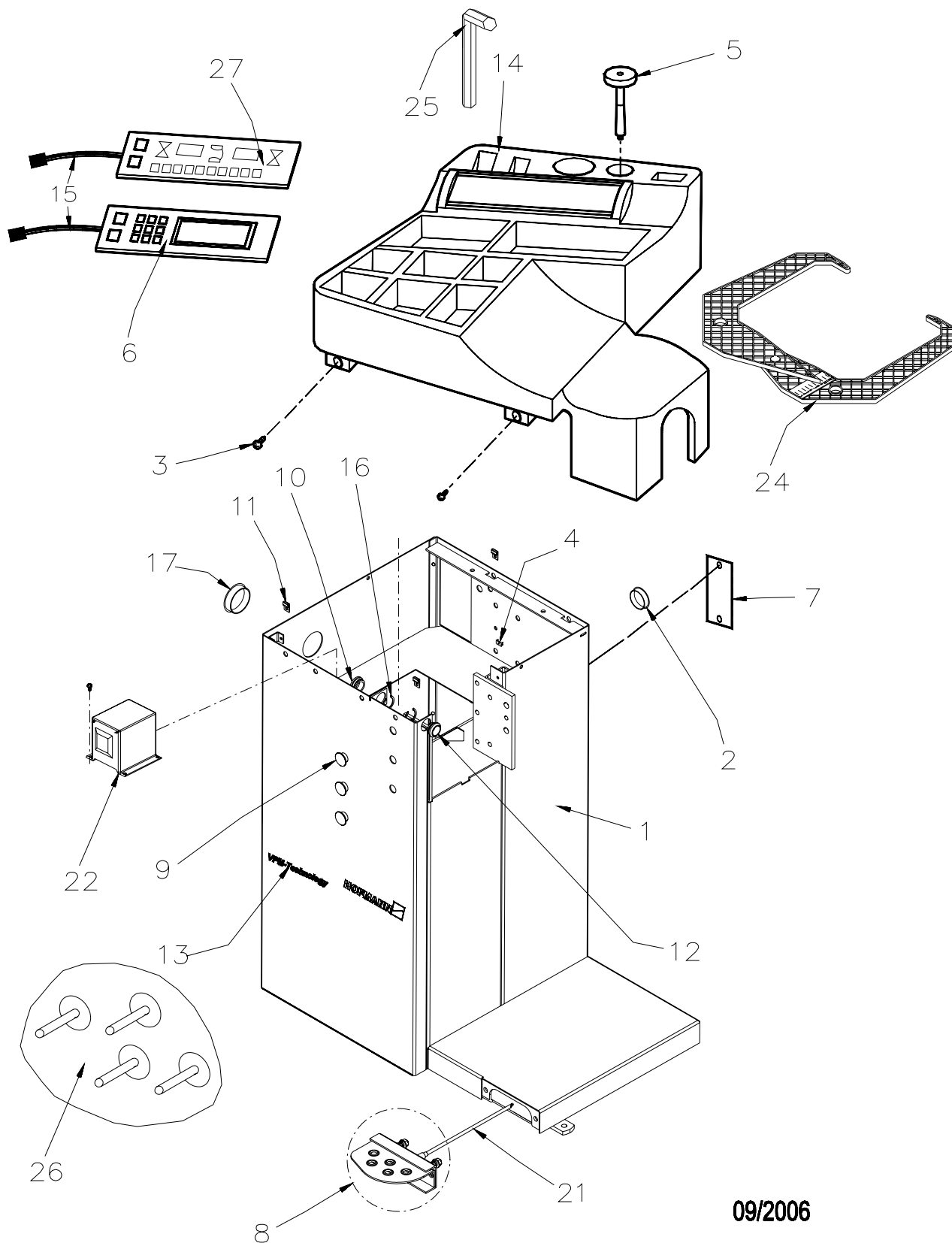


All information contained or disclosed in this document is considered confidential and proprietary by Snap-on Tools Company. All manufacturing, use, reproduction, and sales rights are reserved by Snap-on Tools Company and the information contained herein shall not be used in whole or in part without the express written consent of Snap-on Tools Company.

Table of Contents

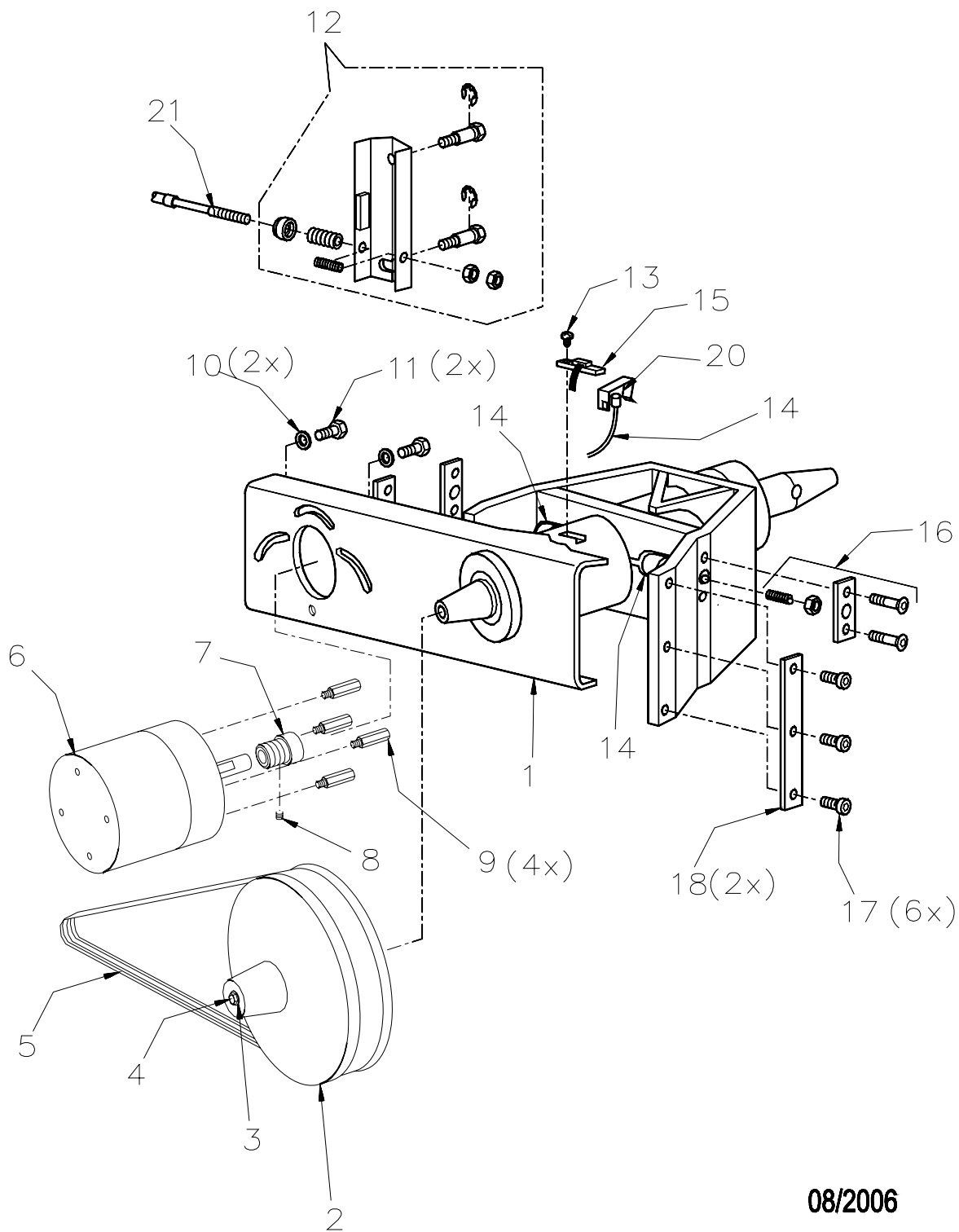
Cabinet and weight box	2
Vibratory system with drive unit	3
SAPE Assembly	4
Pedal Assembly	4
Electronic Box Assembly	5

1495.b



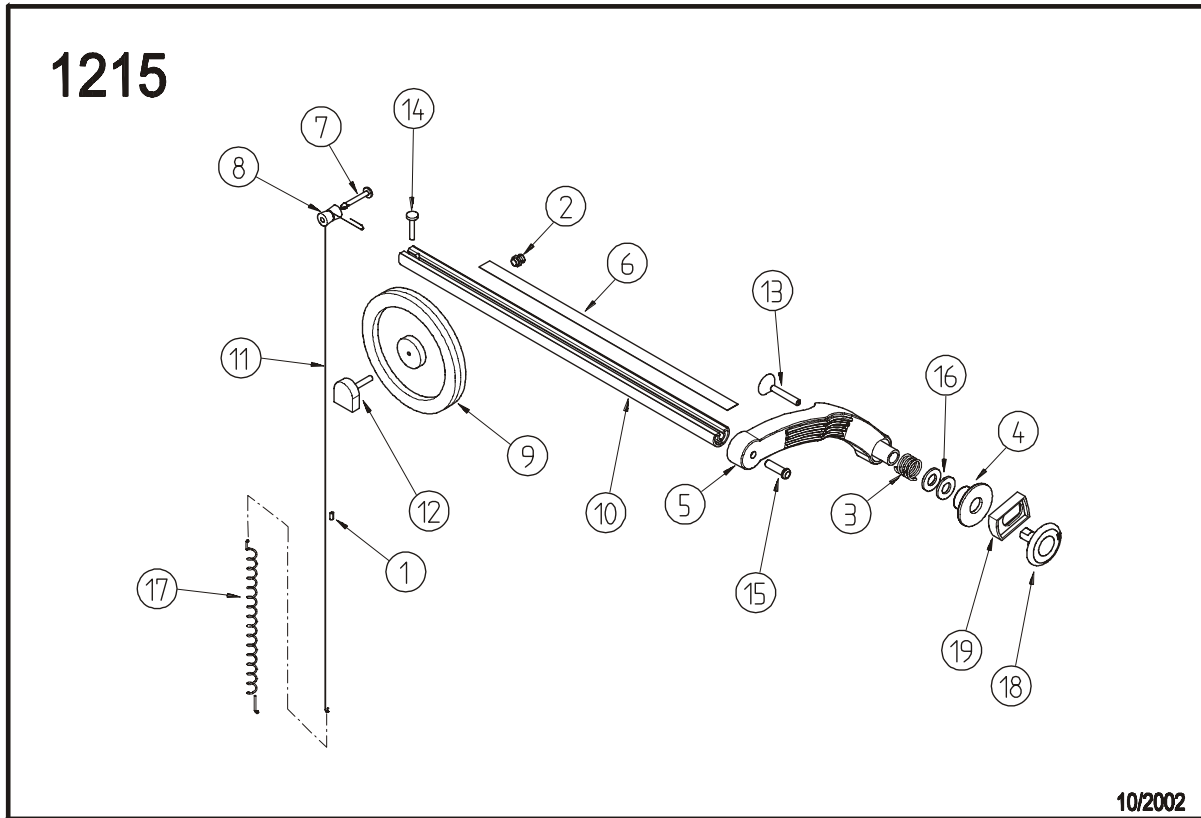
09/2006

1496b

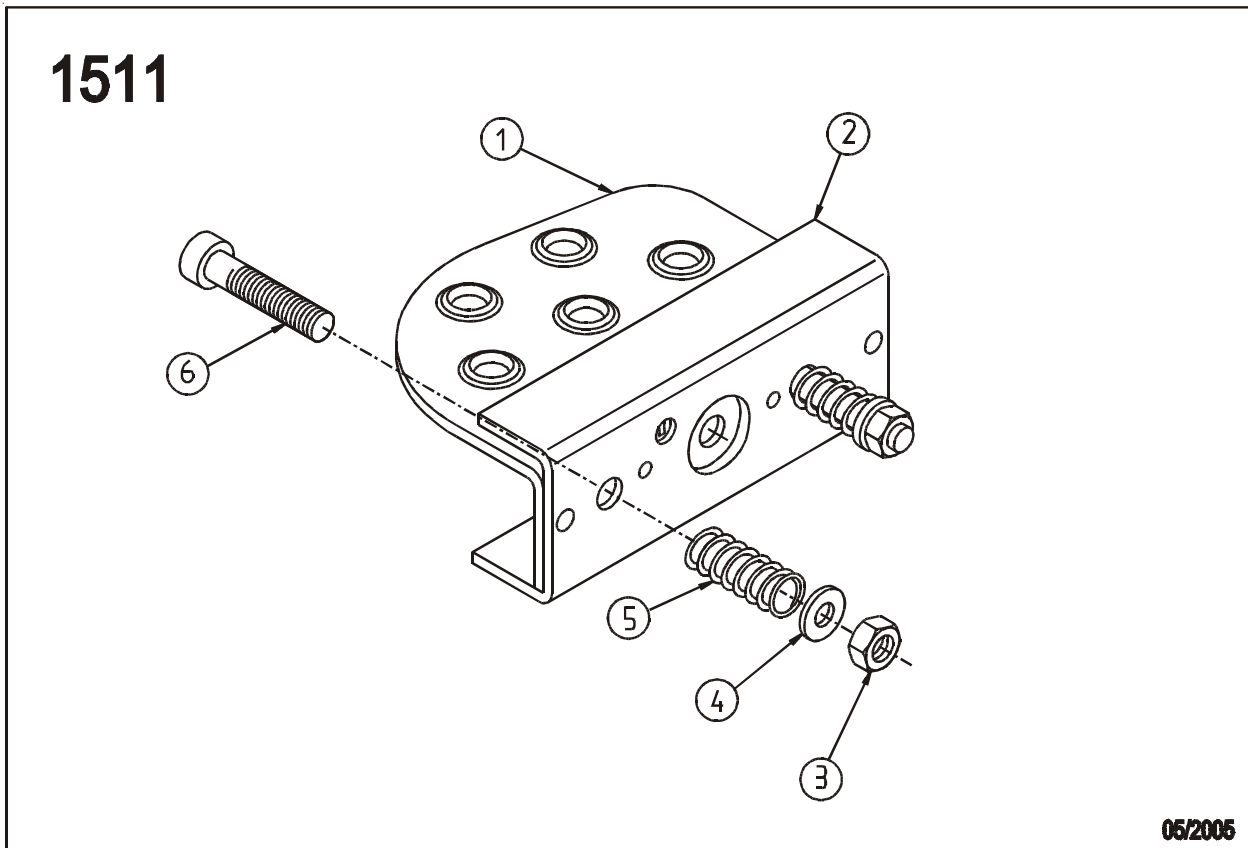


08/2006

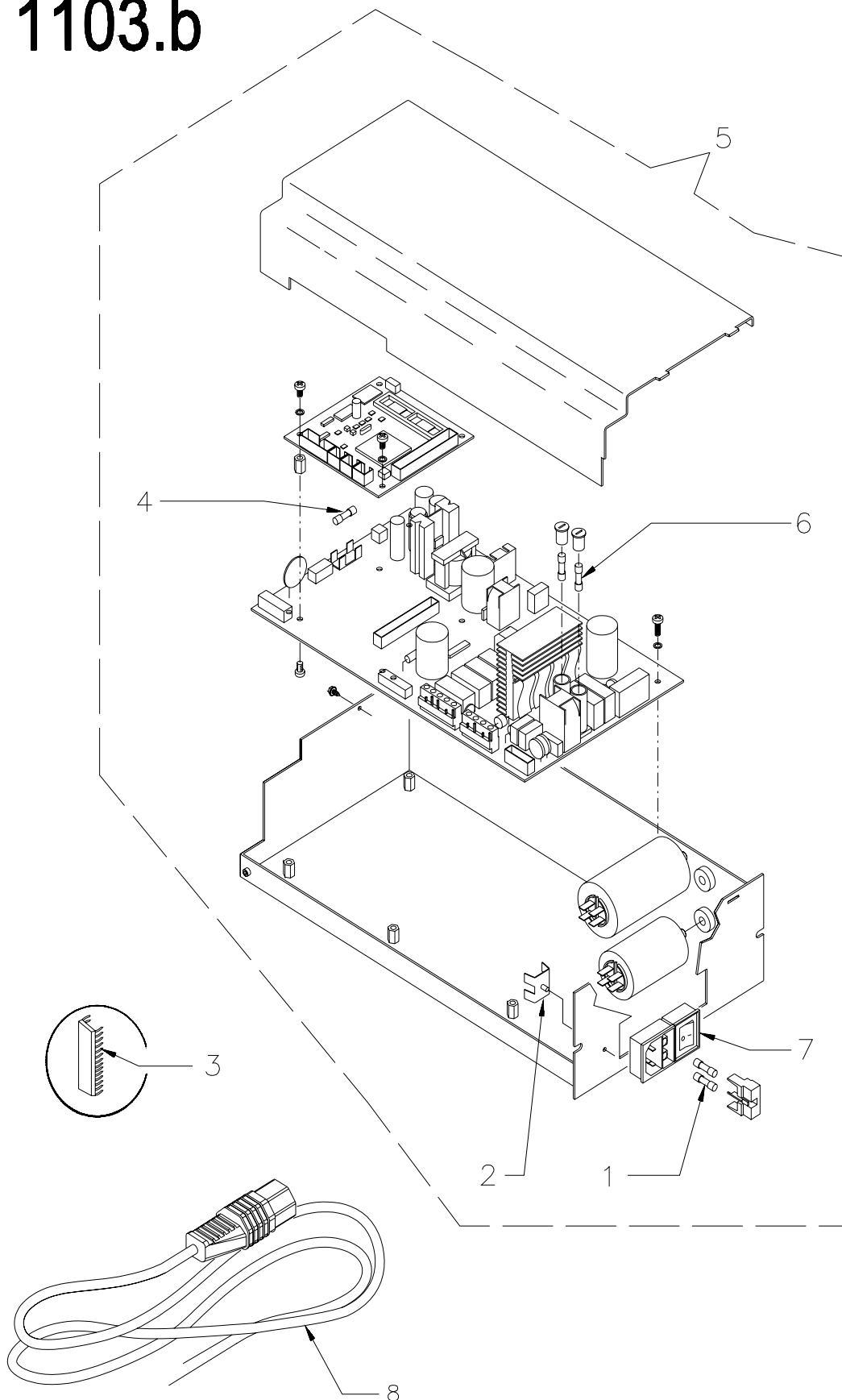
SAPE Assembly



Pedal Assembly



1103.b



09/2006

- NOTE - **Parts in Bold indicate stocking item**

Fig. 1495b:

Cabinet and weight box

SYM	Part Number	DESCRIPTION	Note
1	EAS2067G81A	S1-CABINET RAL5015	
2	1-3176	PLUG	
3	1-20523	SELF TAPPING SCREW	D5,5X25
4	2-23201	TERMINAL, PLUG	
5	EAM0005D40A	CALIBRATION WEIGHT	
6	EAA0328G17A	LCD PANEL ASSEMBLY	
	6726370	Display PCB	
	3402269	Keypad	
	3402246	Start button	
	3402247	Stop button	
	3613043	LCD Display	
	1701582	Front panel with overlay	
7	EAS2027G23A	PANEL	
8	EAA0263G07A	BRAKE PEDAL	
9	EAC0060G00A	HOLE PLUG	16MM
10	EAM0005D39A	BUSHING, INSIDE SAPE	
11	1-6739	TINNERMAN CLIP	
12	EAM0005D38A	BUSHING, OUTSIDE SAPE	
13	EAL0349G82A	LABEL VPM TECHNOLOGY	
14	EAC0060G58A	WEIGHT TRAY	
15	EAW0239D03A	KEY-PAD CONNECTING LEAD (2300)	
	EAW0233J10A	KEY-PAD CONNECTING LEAD (2350)	
16	1-4577	SNAP-RING-25X1,2	
17	1-2676	CUP	
21	EAA0260D58A	BRAKE CABLE	
22	7-15601A	TRANSFORMER	
23	1-3724	SELF-TAPPING SCREW	
24	EAA0247G21A	Rim Width Caliper	
25	1101013	Hex Key	
26	EAC0060G02A	Flange Cover	
	EAM0006G01A	Hook Accessory Storage	
27	EAA0255J57A	LED Panel Assembly	
	0027132	Display Circuit PCB	
	3402246	Start Button	
	3402247	Stop Button	
	4027139	Display panel with overlay	
	3402248	Keypad	
	0027128	Overlay only	

Fig. 1496:
Vibratory system with drive unit

SYM	Part Number	DESCRIPTION	Note
1	EAA0260D02A	VIBRATORY SYSTEM	
2	EAM0005D12A	DRIVE PULLEY	
3	1-16841	WASHER	8,4
4	1-32901	HEXAGON HEAD SCREW	M8X35
5	8-3531	BELT 5PJ711	
6	EAA0266D31A	MOTOR WS 120W	
7	EAM0005D08A	MOTOR PULLEY	
8	1-28410	SETSCREW	M6X8
9	EAM0005D44A	SPACER FOR MOTOR	
10	1-11541	WASHER	B6,4
11	1-30701	HEXAGON HEAD SCREW	M6X12
12	EAA0332G12A	MAIN SHAFT LOCK ASSY	
13	1-13004	SCREW	M4X6
14	6792-069	(2) TRANSDUCERS & TEMP SENSOR	
15	EAP0201D50A	OPTO-ELECTRONIC UNIT	
16	EAA0328G16A	FASTENING MEANS FOR TRANSDUCER	
17	1-17709	HEX. SOCKET HEAD CAP SCREW	M8X20
18	EAS2025D03A	SPACER FOR VIBRATORY SYSTEM	
20	EAS2025D12A	CLIP	
21	EAA0260D58A	Brake Cable	

Fig. 1215:
Gauge arm for distance

SYM	Part Number	DESCRIPTION	Note
1	2-07557A	CABLE HOLDER SNAP-ON	
2	2-07657A	CLAMPING DEVICE WITH NUT	
3	1-06868A	COMPRESSION SPRING	D- 145E
4	EAC0058D10A	CONTACT RING	
5	EAC0054P01A	EUROPEAN SAPE ARM	
6	EAL0345D01A	MEASURE TAPE- 1D SAPE	
7	8-1940	PIN-PUSHIN, NYLON	
8	EAM0005D35A	REEL-GUIDING, SAPE	
9	EAC0058D06A	REEL-ROPE	
10	EAM0005D36A	ROD-SAPE, S1	
11	EAK0221J06A2	Cable Kit	
12	EAA0266D20A	Potentiometer	
13	1-3624	SCREW-FHMS	5X40 MM
14	1-13609	SCREW-HHCS	M4X16-8,8
15	1-3824	SCREW-SELF TAP	6X12 MM
16	1-10141A1	SPACER WASHER	
17	1-03267A	SPRING-EXTENSION, SAPE	
18	EAC0058D11A	TOUCHING DISC	
19	EAC0058D09A	WEIGHT APPLICATOR	

Fig. 1511:
Pedal assembly

SYM	Part Number	DESCRIPTION	Note
1	EAS2020P20A	Brake Pedal	
2	EAS2027G18A	Brake Pedal support	
3	1-10033	Hexagonal Nut	M8
4	1-10041	Washer	8.4
5	1-06768A	Compression spring	
6	1-18209A	Screw Hexagonal Socket	M8 x 45

Fig. 1103b:
Electronic unit

SYM	Part Number	DESCRIPTION	Note
1	2-21251A	FUSE-6.3 AMP, 250 VAC	
2	2-23201	FLAT PLUG GROUNDING 4-POL	
3	3-19426AE1	MEMORY, EPROM-PROGRAMMED (2300)	
	3-11225A	MEMORY, EPROM-PROGRAMMED (2350)	
4	2-16951A	FUSE, 1,25A (5X20 MM) MED. BREAK	
5	EAA0255J23A	DIGITAL BOX	
6	2-15351A	FUSE, SLOW-BLOW 3,2A-250V	
7	2-16851A	POWER ENTRY MODULE	
8	EAX0039J00A	CORD-POWER, 115V	

HOFMANN



HOFMANN USA

309 Exchange Avenue
Conway, AR 72032
Phone 800-251-4500
Fax 501-450-2085
www.hofmann-usa.com

HOFMANN BALANCING TECHNIQUES LTD. CANADA

6500 Millcreek Dr.
Mississauga, Ontario L5N 4G4
Phone 800-267-2185
Fax 905-821-2073
www.hofmann.ca

Notice: The information contained in this document is subject to change without notice. **Snapon Equipment** makes no warranty with regard to this material. **Snapon Equipment** shall not be liable for errors contained herein or for incidental consequential damages in connection with furnishings, performance, or use of this material.

This document contains proprietary information which is protected by copyright and patents. All rights are reserved. No part of this document may be photocopied, reproduced, or translated without prior written consent of **Snapon Equipment**.