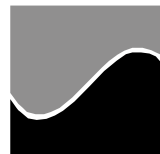


geodyna 2400

Spare parts list

HOFMANN®



Date 06/01/07

Figure 1 Vibratory system

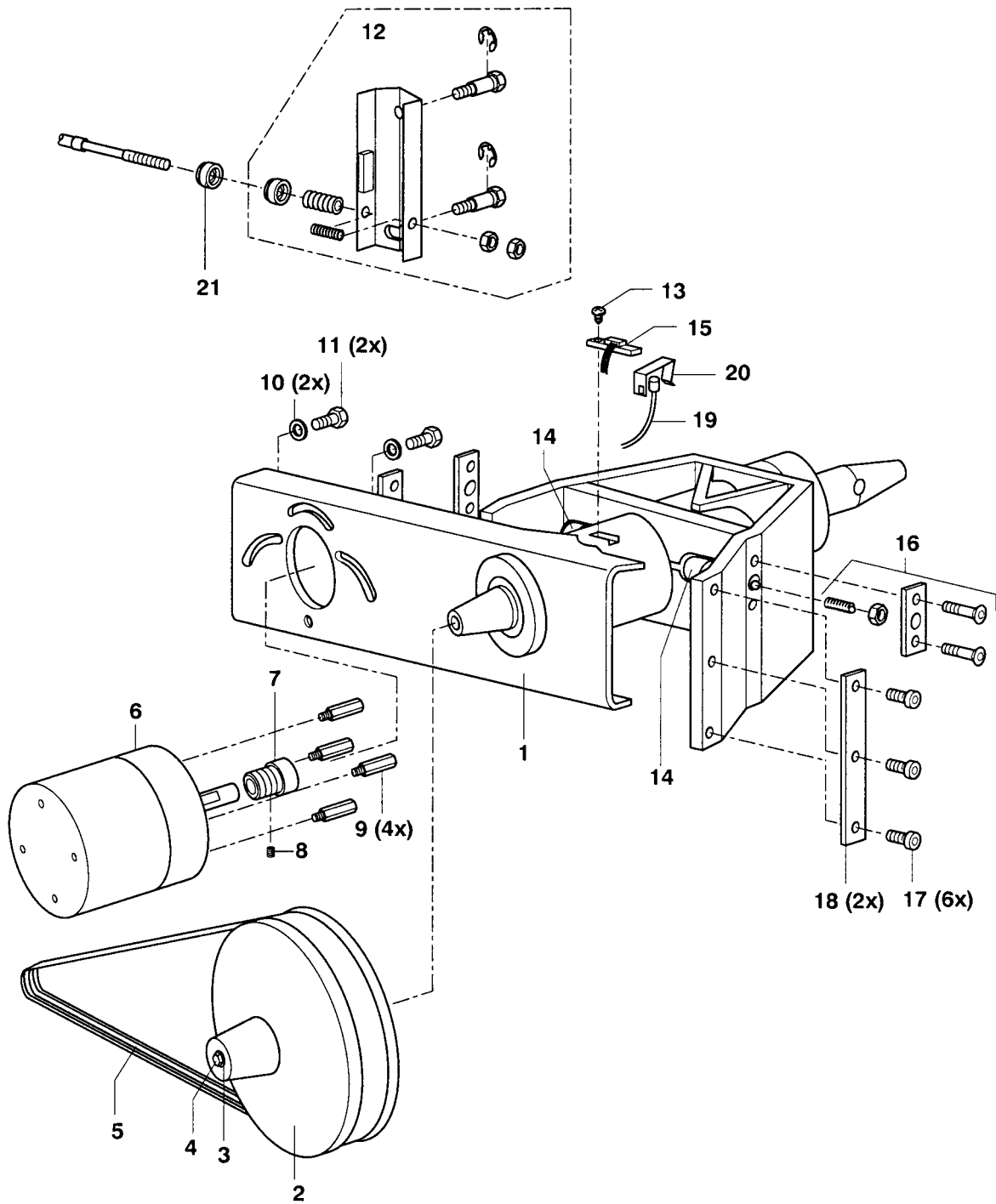


Figure 2 Chassis & Weight tray

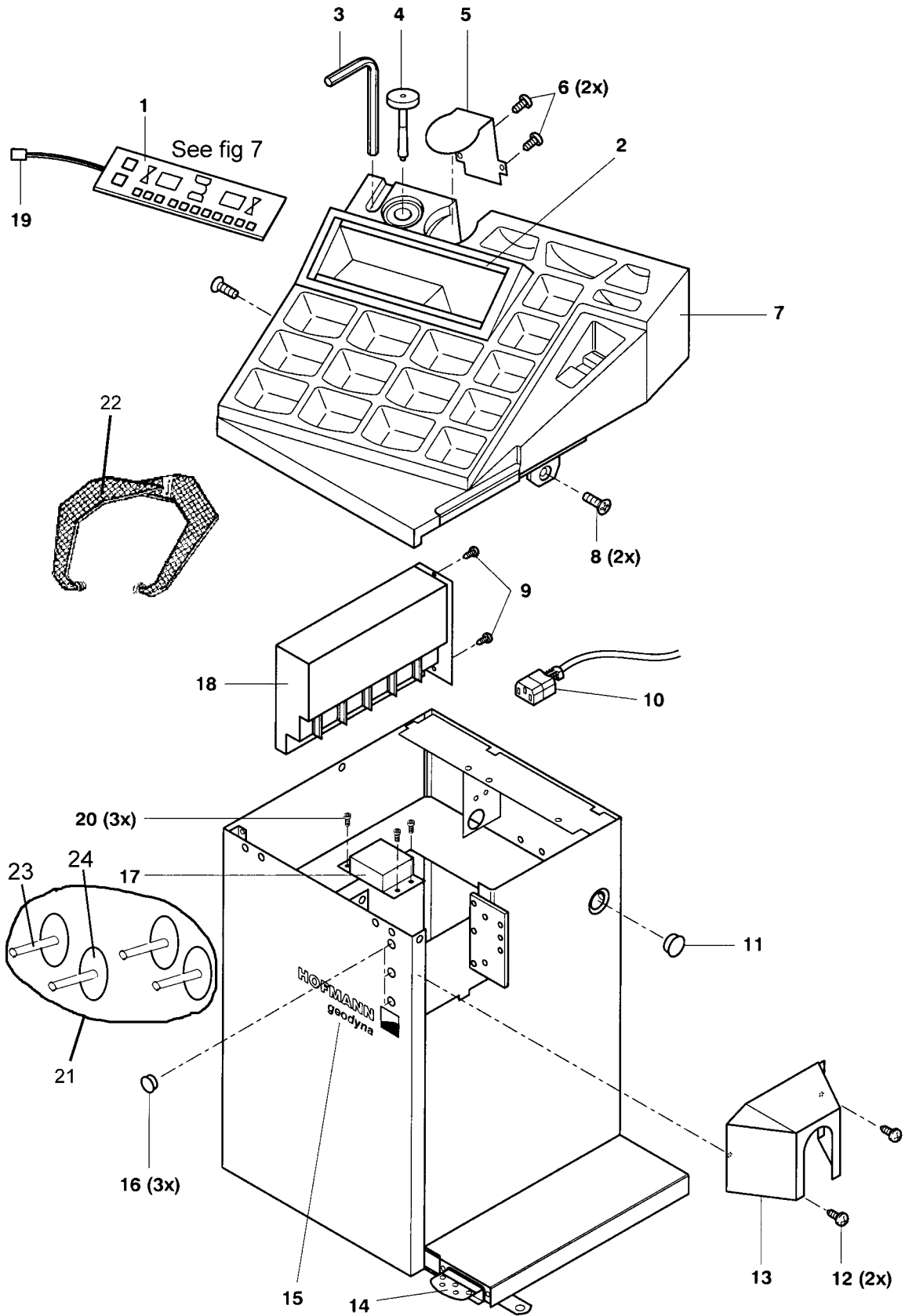


Figure 3 Distance / Diameter gauge

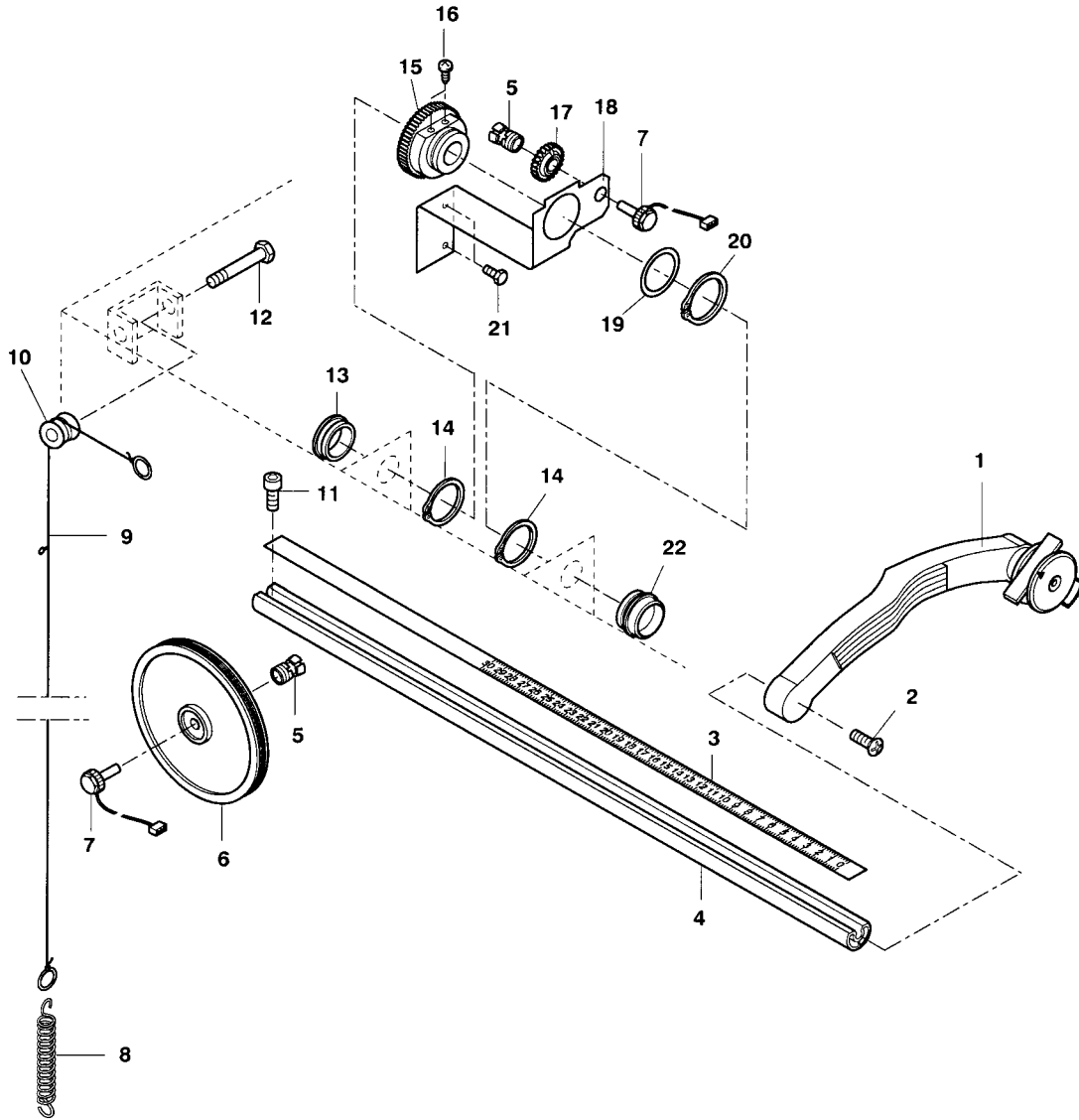


Figure 4 Pedal for shaft lock

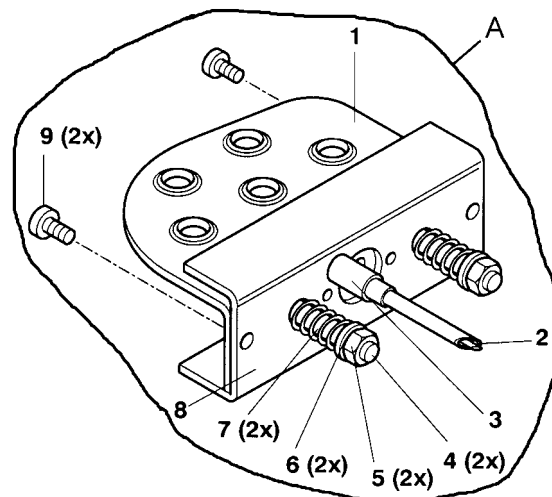


Figure 5 Wheel guard

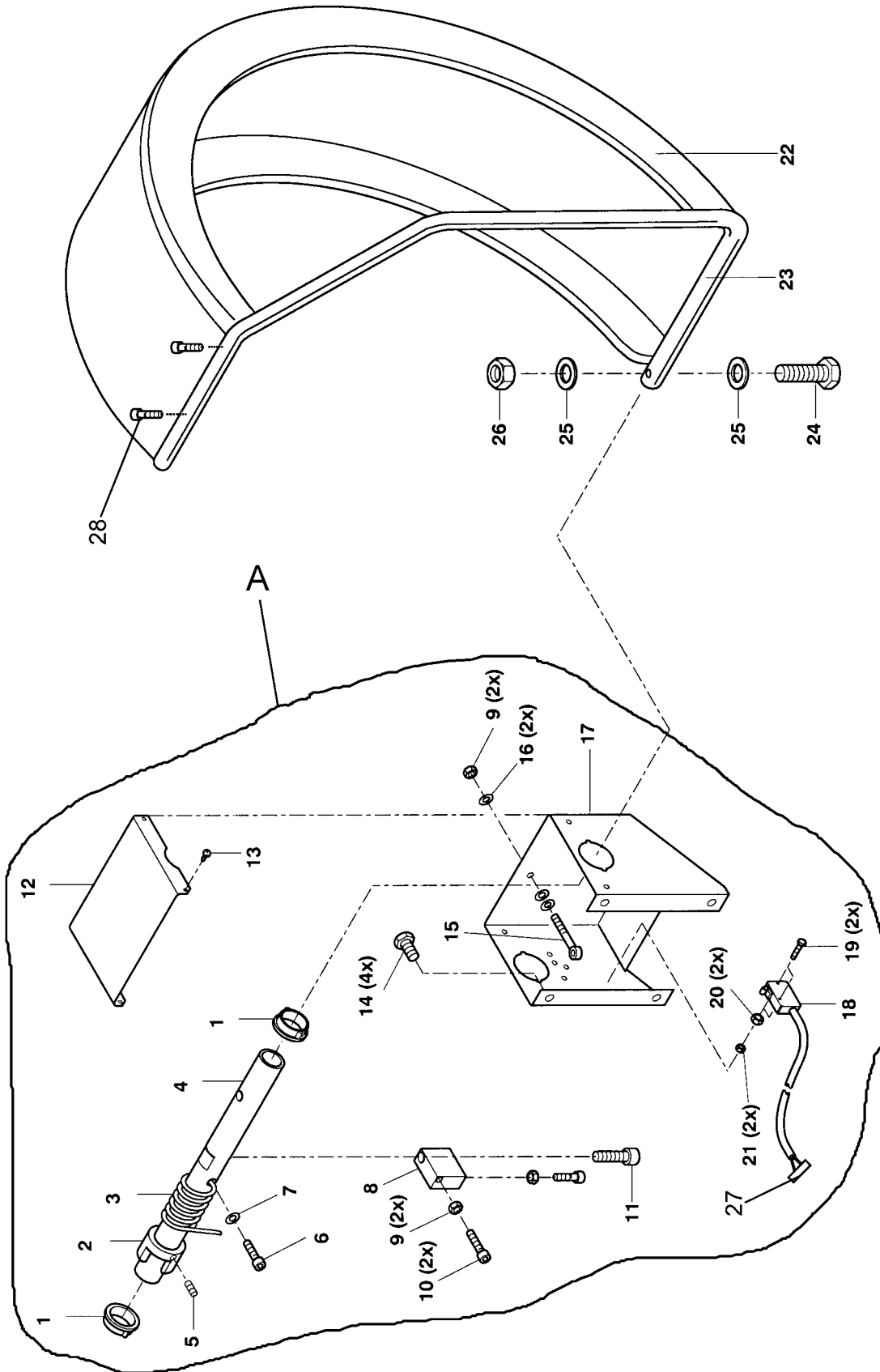


Figure 6 Electronic Box

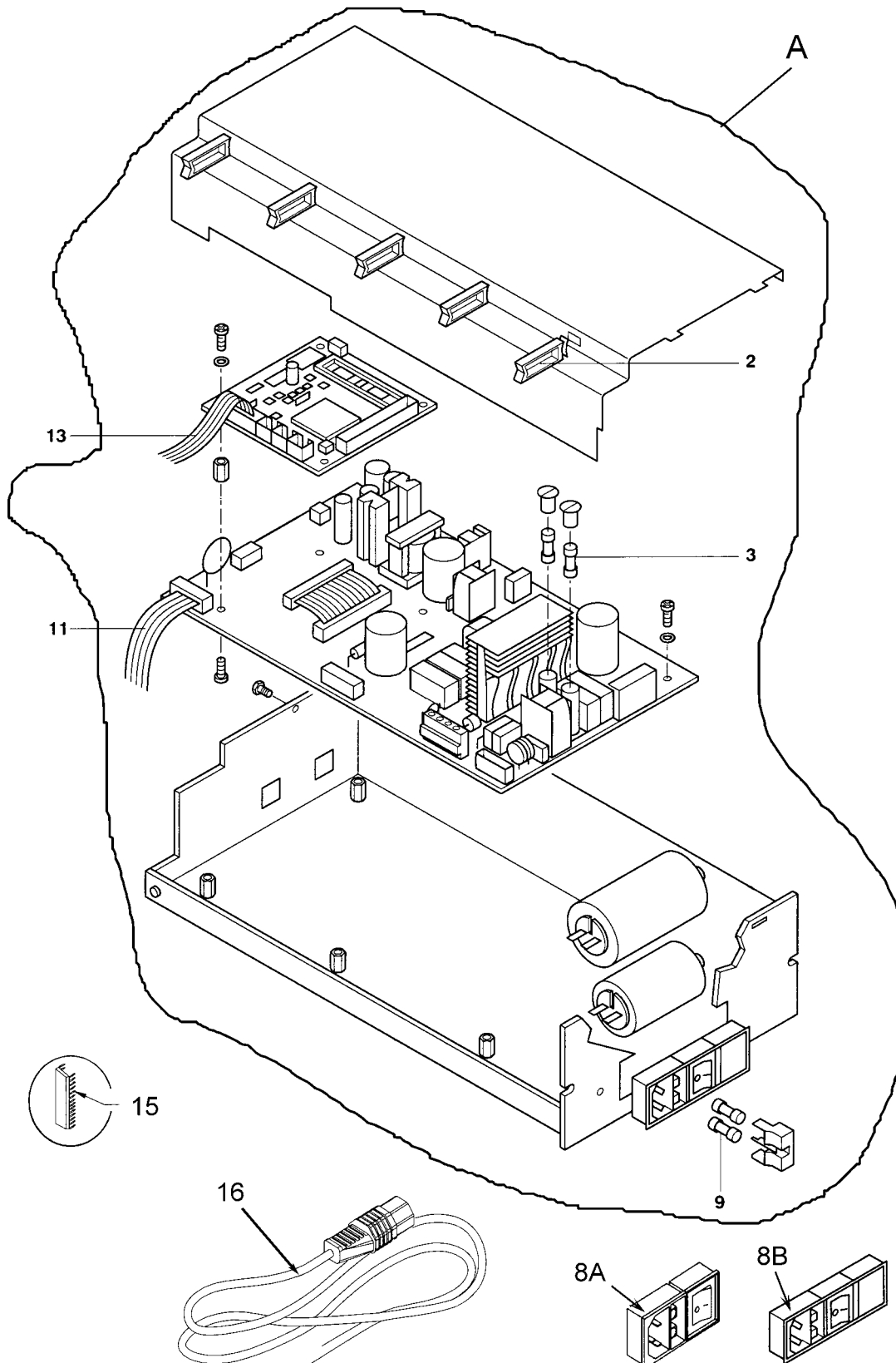
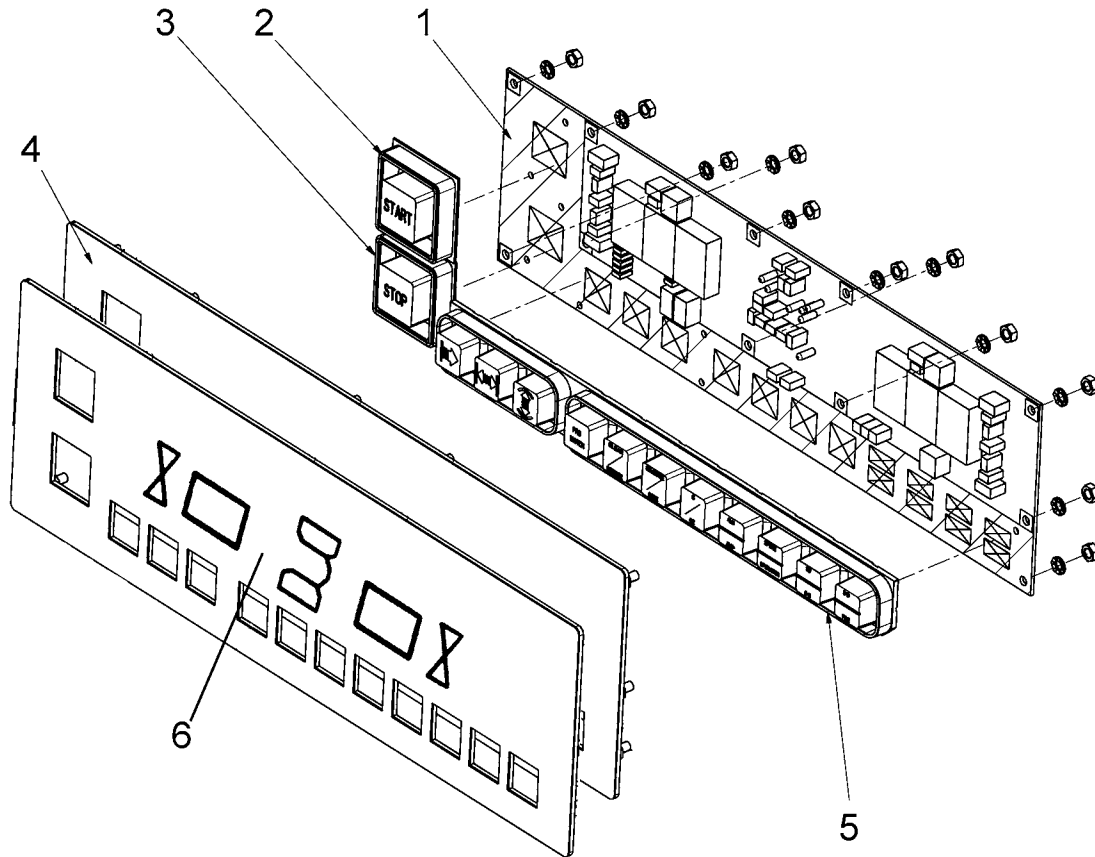


Figure 7 Display Panel



No.	Part no.	SOE Part Number	Part Descriptions	Spec.	DIN
-----	----------	-----------------	-------------------	-------	-----

Fig. 1: Vibratory system with drive unit

1	6418 868		Vibratory system		
2	6418 343		Drive pulley		
3	1640 080		Washer	8.4	9021
4	1530 098		Hexagon head screw	M8 x 35	933
5	1252 584		Belt	5PJ711	7867
6	6792 087		Motor - UL	WS 120W	
7	6418 405		Motor pulley		
8	1527 016		Setscrew	M6 x 8	915
9	6418 415		Spacer for motor		
10	1641 060		Washer	B 6.4	125
11	1530 072		Hexagon head screw	M6 x 12	933
12	6418 303		Main shaft lock assembly		
13	1509 010		Screw	M4 x 6	7985
14	6792 069		Ribbon cable w/temp. sensor & pickups		
15	6726 387	EAP0201D50A	Opto-electronic unit (without lens)		
15					
16	6419 192		Fastening means for transducer		
17	1524 060		Hexagon socket head cap screw	M8 x 20	912
18	6418 337		Spacer for vibratory system		
19	6792 069		Ribbon cable w/temp. sensor & pickups		
20	1628 090		Clip		
21	6418 894		Spacer		

Fig. 2: Chassis & Weight Tray

1			LED display panel – See Figure 7		
3	1101 013		Wrench		
4	6418 981	EAM0005D40A	Calibration weight		

No.	Part no.	SOE Part Number	Part Descriptions	Spec.	DIN
5	6419 229	EAS2025D55A	Cover plate		
6	1532 175		Tapping screw	3.5 x 9.5	7981
7	6419 362		Weight tray		
8	1532 532		Tapping screw	6.3 x 32	7981
9	1532 618		Self-tapping screw	M5 x 10	
10	4206 151	EAX0039J00A	Power cord		
11	4238 517		Cap		
12	1532 621		Screw	M5 x 10	
13	6419 142		Cover of vibratory system		
14	6419 111		Pedal assembly (see Fig. 4)		
15	4082 371		Decal geodyna 2400		
16	4238 507		Cap		
17	4501 082	7-15601A	Transformer 115 V – 230 V with cable & connectors (7-00902A)		
18			Electronic box (see Fig. 6)		
19	6792 090		Ribbon cable for display panel		
20	1532 618		Screw SF-TT	M5 x 10	
21	6419 199		Set of 4 hooks		
22	2900 007	EAA0247G21A	Rim width calipers		
23		EAM0006G01A	Pin		
24		EAC0060G02A	Rubber Pad		

HOFMANN USA

Fig. 3: Distance and Diameter gauge

1	6419 215		Gauge arm assembly with ejector		
2	1532 662		Screw	M6 x 12	7500
3	6418 516	EAL0349G31A	Scale		
4	6418 515	EAM0005D37A	Gauge arm (500 mm long)		
5	3390 902		Collet with nut		
6	1701 008	EAC0058D06A	Pulley		
7	6792 037	EAA0266D20A	Potentiometer with lead		
8	6418 523	EAM0005D35A	Tension spring		

No.	Part no.	SOE Part Number	Part Descriptions	Spec.	DIN
9	6419 105	EAK0221J06A2	Rope complete with ring		
10	6418 521	EAM0005D35A	Rope pulley		
11	1524 016		Hexagon socket head cap screw	M4 x 16	912
12	3049 450		Connector		
13	6418 517		Collar-end bushing, short		
14	1657 025		Circlip	A-25	471
15	1235 539		Gear wheel, big		
16	1538 945		Special screw		
17	1235 538		Gear wheel for potentiometer		
18	6418 527		Angular support		
19	1645 140	1-07162A	Shim	28 x 40 x 0.5	988
20	1657 027		Circlip	A-27	471
21	1532 618		Self-tapping screw	M5 x 10	
22	6418 512		Collar-end bushing, long		

HOFMANN USA

Fig. 4: Pedal assembly

A	6419 111	EAA0263G07A	Pedal geodyna 2400, assembly (without cable #1230 808)		
1	1921 300	EAS2020P20A	Pedal		
2	1230 808	EAA0260D58A	Bowden cable assembly		
3	1921 302	EAM0006G00A	Spacer		
4	1524 065		Hexagon socket head cap screw	M8 x 45	912
5	1557 080	1-10033	Hexagon nut	M8	6925
6	1641 080	1-10041	Washer	8.4	125 A
7	1611 187	1-06768A	Compression spring		
8	1921 301	EAS2027G18A	Pedal holder		
9	1524 043		Hexagon socket head cap screw	M6 x 20	912

No.	Part no.	SOE Part Number	Part Descriptions	Spec.	DIN
Fig. 5: Wheel guard					
A		EAA0255J65A	Wheel Guard Shaft Assembly		
1	1324 032		Collar-end bushing		
2	1631 040		Switch ring		
3	1614 017		Leg spring		
4	6419 152	EAM0005D72A	Arbor		
5	1528 035		Setscrew	M8 x 8	916
6	1535 063		Hexagon socket head cap screw	M8 x 25	7984
7	1643 084		Washer	8.4	7349
8	6419 150		Stop		
9	1555 080		Hexagon nut	M8	934
10	1524 064		Hexagon socket head cap screw	M8 x 40	912
11	1524 103		Hexagon socket head cap screw	M12 x 35	912
12	6419 149		Panel		
13	1532 178		Tapping screw	4.2 x 13	7981
14	1530 094		Hexagon head screw	M8 x 20	933
15	1514 025	1-01530	Eyebolt	M8 x 50	444
16	1641 080		Washer	8.4	125
17	6419 148		Rear enclosure		
18	4402 110		Micro-switch		
19	1530 025		Hexagon head screw	M3 x 25	933
20	1555 050		Hexagon nut	M5	934
21	1557 030		Hexagon nut	M3	6925
22	1701 079	EAC0058D19A	Wheel guard		
23	6417 923	EAM0005D71A	Wheel guard pipe		
24	1529 800	1-1101	Hexagon head screw	M10 x 55	931
25	1641 100		Washer	10.5	125
26	1557 101	1-8133	Hexagon nut	M10	6925
27		2-17947A	Wheel guard switch connector		
28		1-9923	Screws for wheel guard		

No.	Part no.	SOE Part Number	Part Descriptions	Spec.	DIN
-----	----------	-----------------	-------------------	-------	-----

Fig. 6: Electronic box

A		EAA0255J23A	Complete Electronic box – This box will need to be programmed for the appropriate model. Order the program software (EPROM) below item #15 (This box Cannot be used in 980L, 2800P, 4801, 6300(p), 6800P models)		
2	4233 091		Lead holder		
3	3350 325		Fine-wire fuse, slow blow	3.5 AT	
6	3762 020		Capacitor		
7	3762 019		Capacitor		
8A		2-16851A	Power entry module		
8B	3950 036	2-55748A	Power entry module		
9	3350 326	2-21251A	Fine-wire fuse, slow blow	6.3 AT	
11	6792 090		Ribbon cable display and keyboard unit		
13	6792 069		Ribbon cable w/temp. sensor & pickups		
15		3-11225A	Software used to program Electronic box Used for models 2350,2400,2600,2800,2800p	Eprom	
16		EAX0039J00A	Power cord		

Fig. 7: LED Panel

1	0027132	EAP01925P50A	Display circuit board		
2	3402 246		Start button		
3	3402 247		Stop button		
4	4027139		Display panel with overlay (no buttons, board)		
5	3402 248		Keypad		
6	0027128		Overlay only		

Hofmann – USA 309 Exchange Ave. Conway, AR 72032

Phone: 800-251-4500 Fax 501-450-2085 web: www.hofmann-usa.com

Hofmann – Canada 6500 Millcreek Dr. Mississauga, Ontario L5N 4G4

Phone: 800-267-2185 Fax: 905-821-2073 web: www.hofmann.ca

Edition: 01/04 Revised 06/07