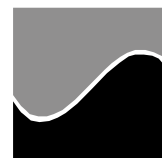


geodyna 2600 / 2800(p)

Spare Parts list

Wheel Balancer

HOFMANN®



Date 02/26/19

Figure 1: Vibratory System 2600 / 2800

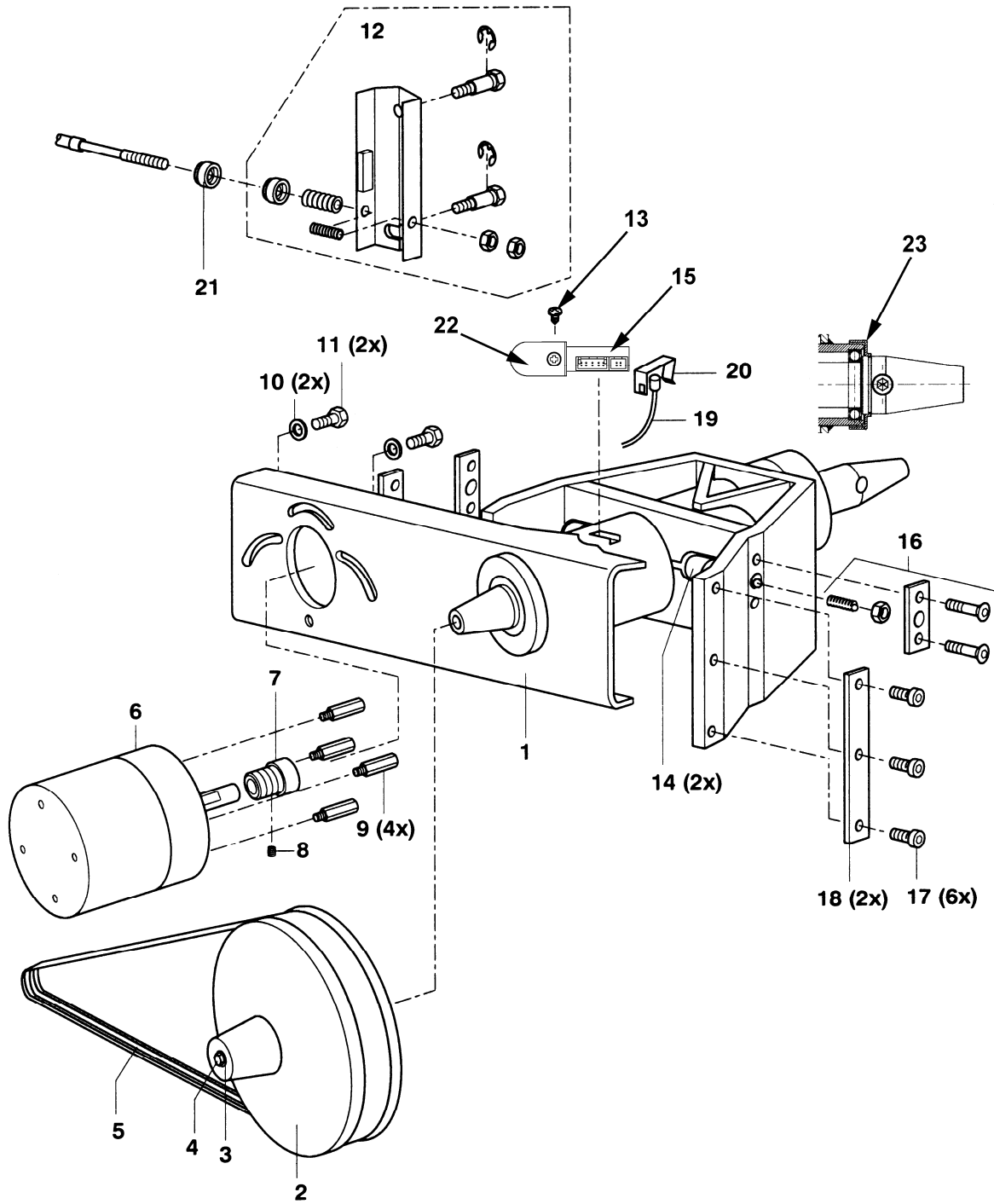


Figure 2: Vibratory System 2800p

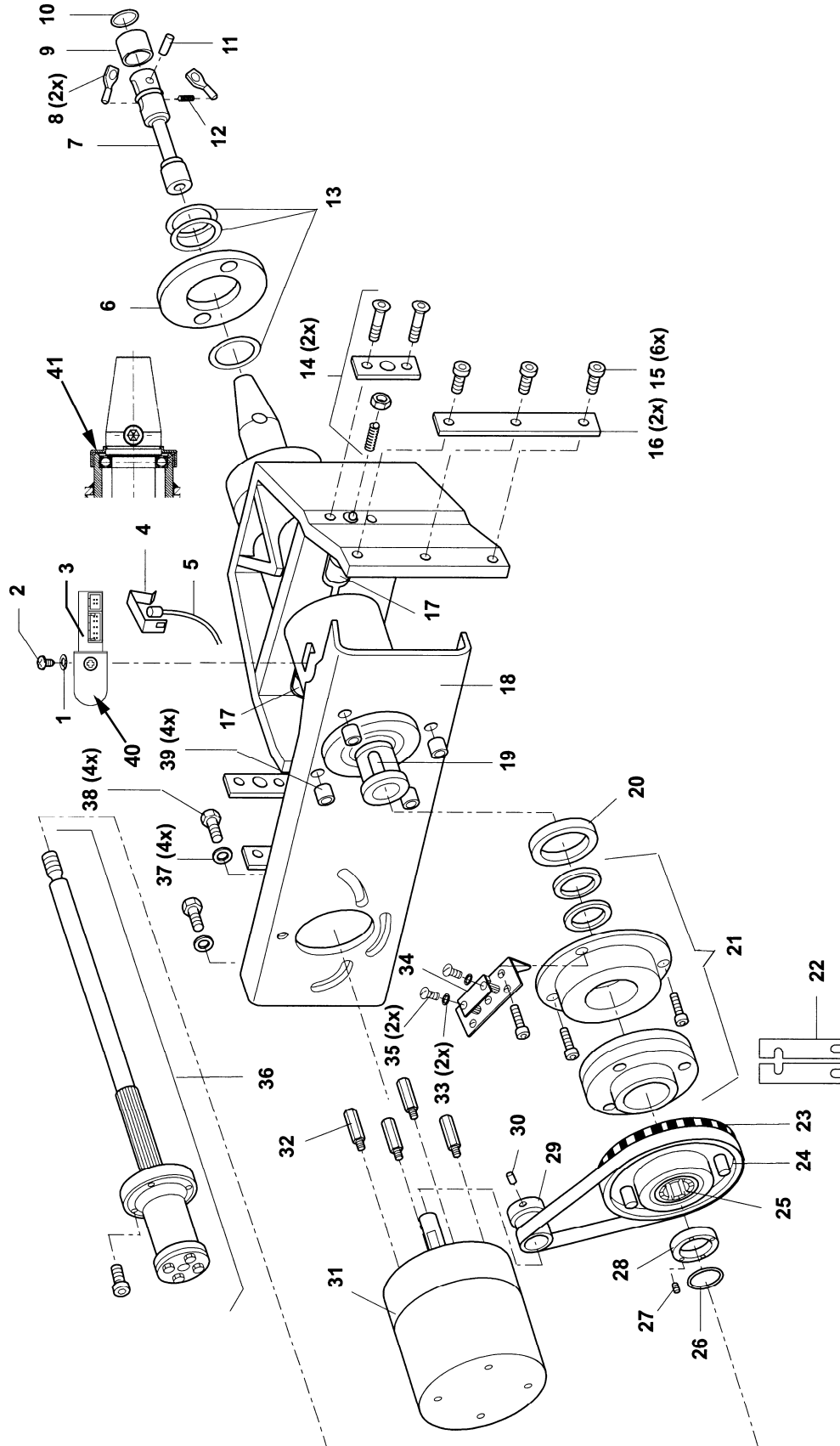
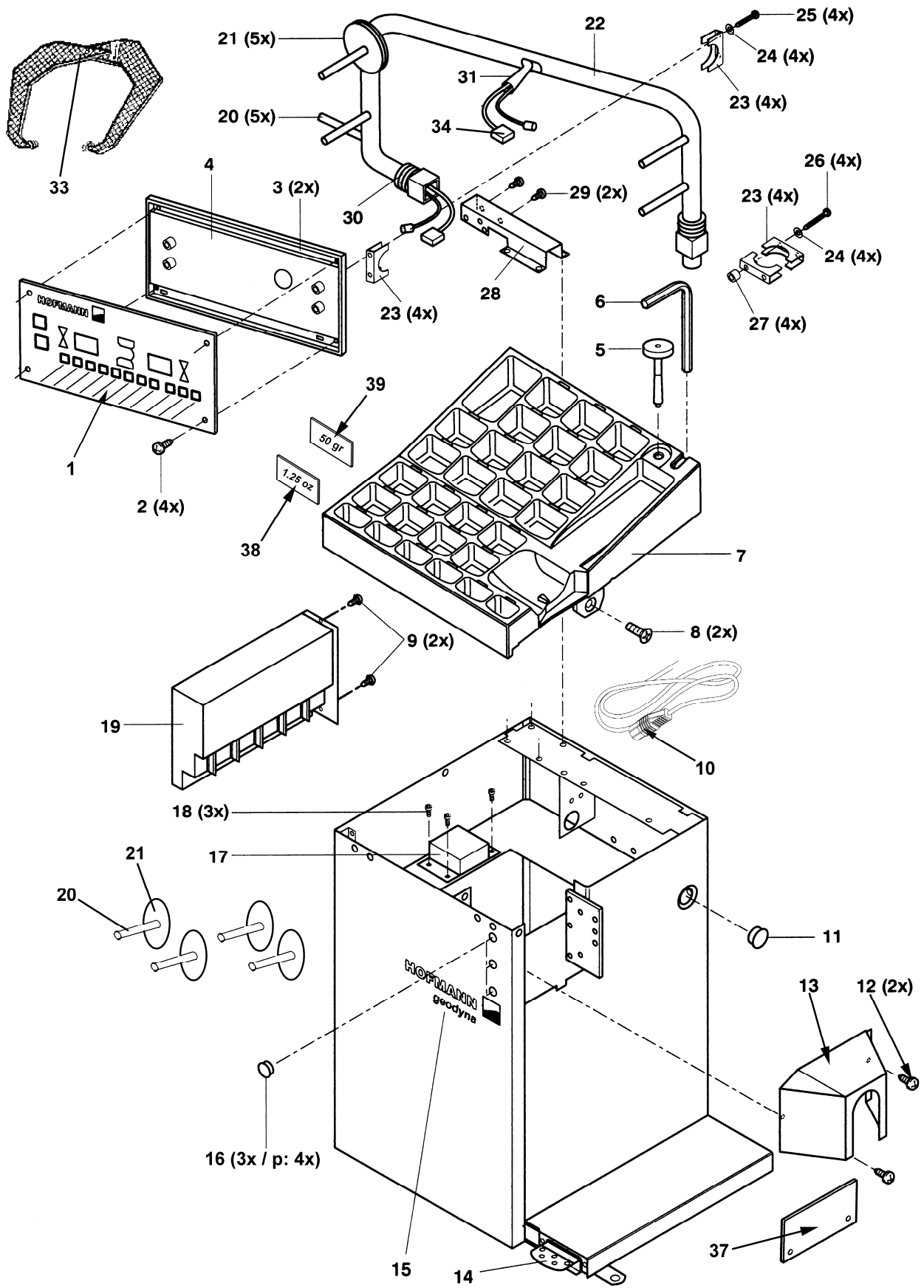
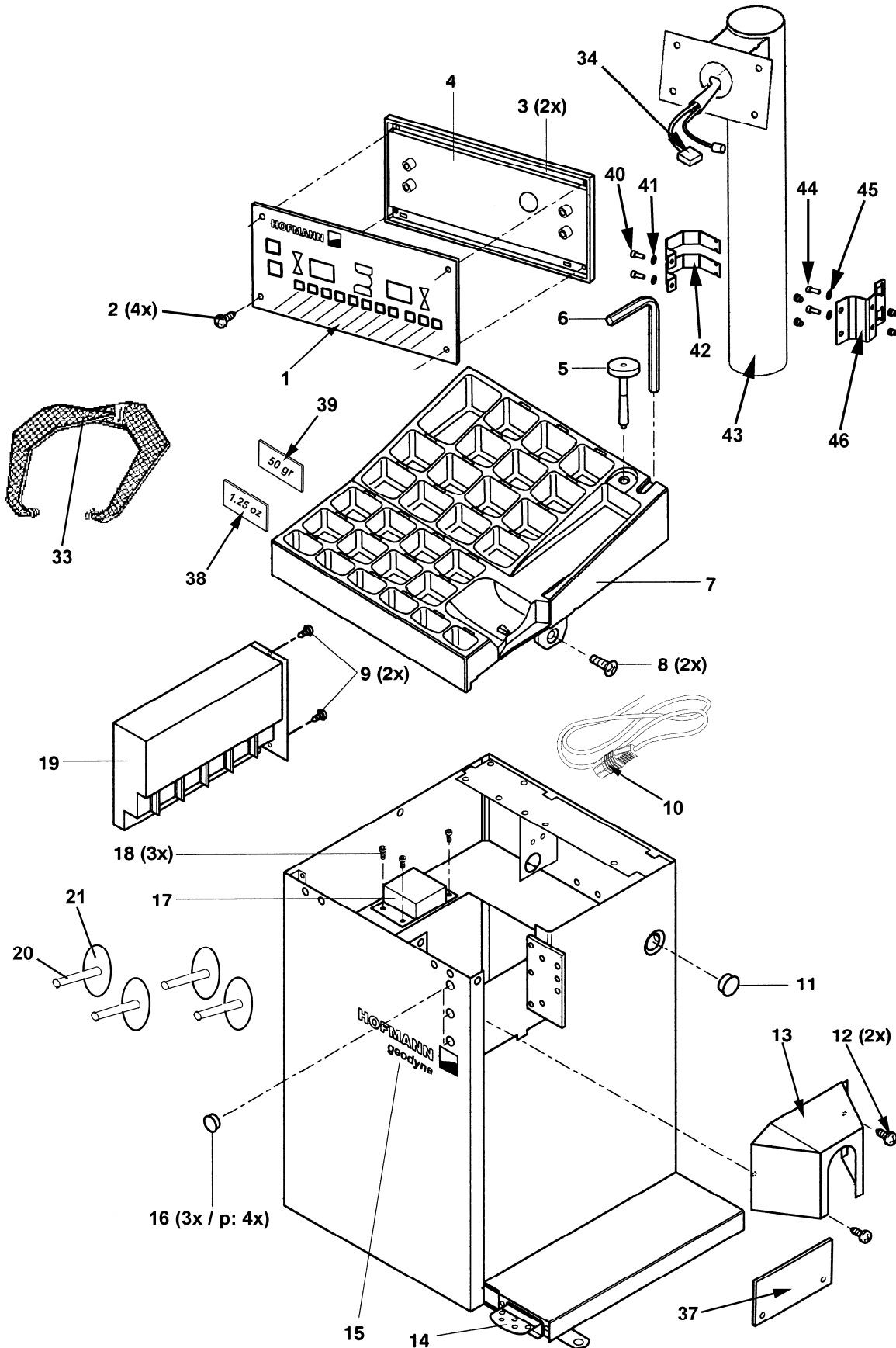


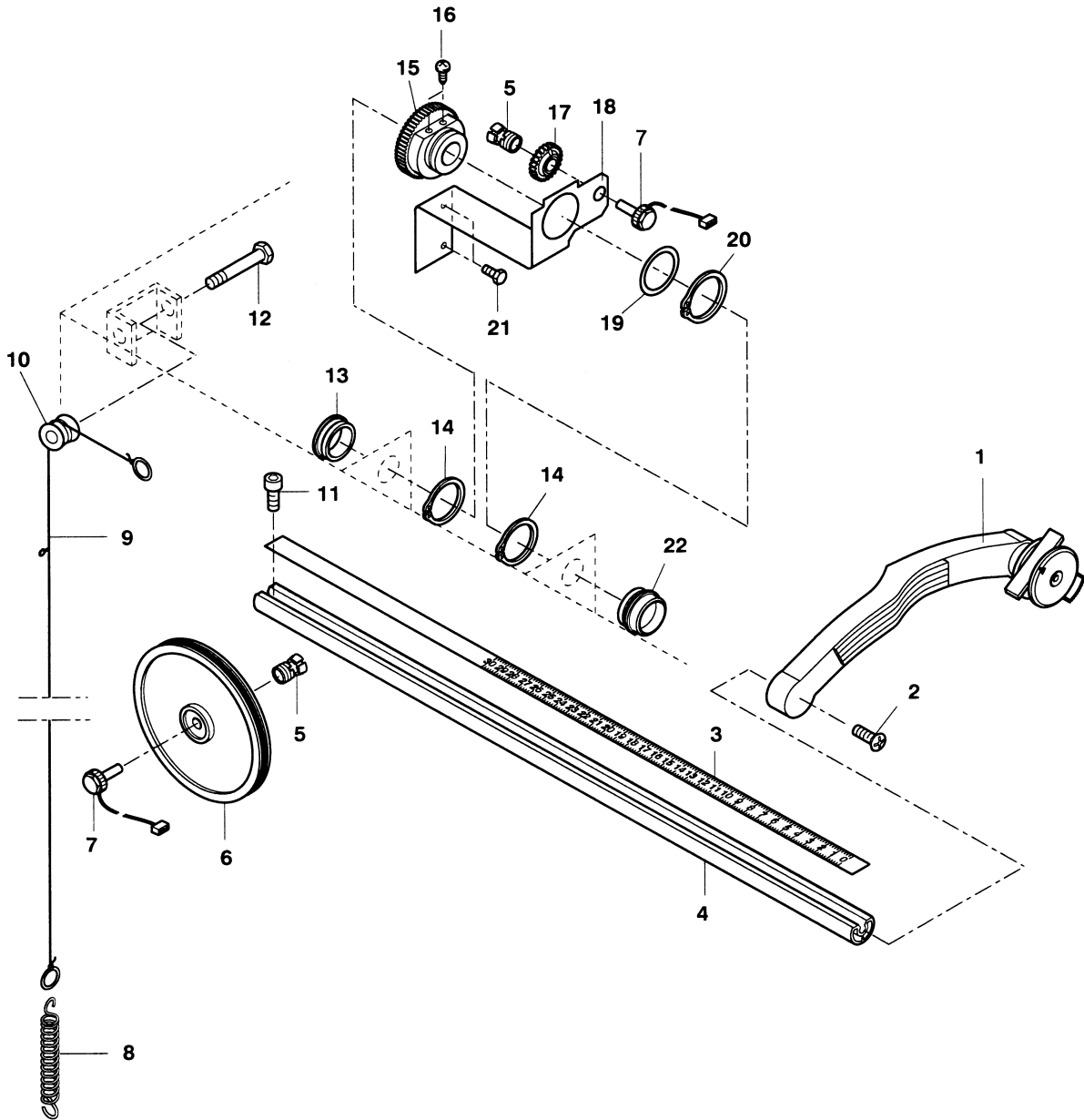
Figure 3A: Chassis & Weight Tray (Up to Nov 08 LB)



**Figure 3B: Chassis & Weight Tray
(From Dec 08 MB)**



**Figure 4A: Distance / Diameter Gauge
(Up to Nov 07 LA)**



**Figure 4B: Drop In Distance / Diameter Gauge
(From Dec 07 MA)**

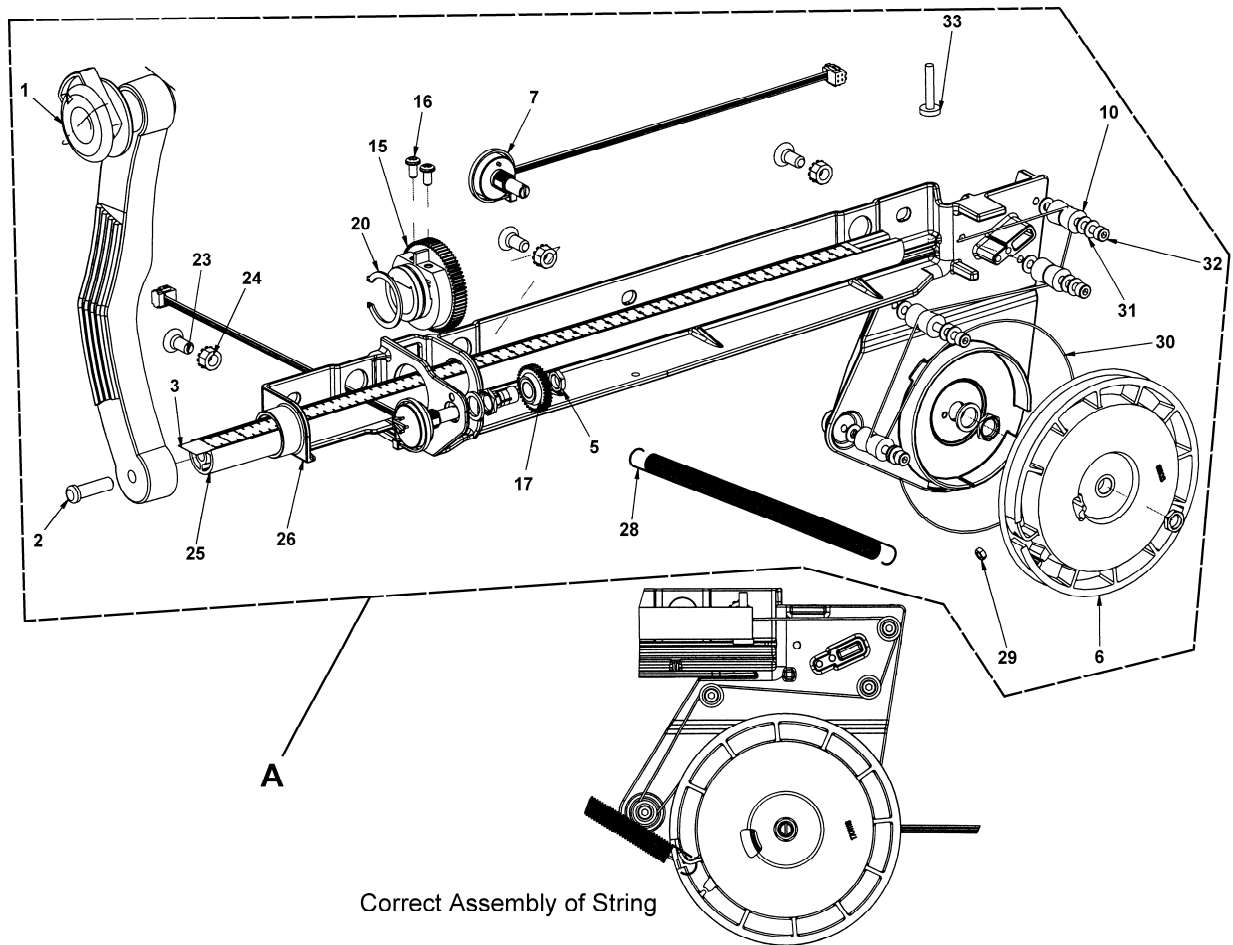


Figure 5A: Width Gauge Arm 2800 / 2800p

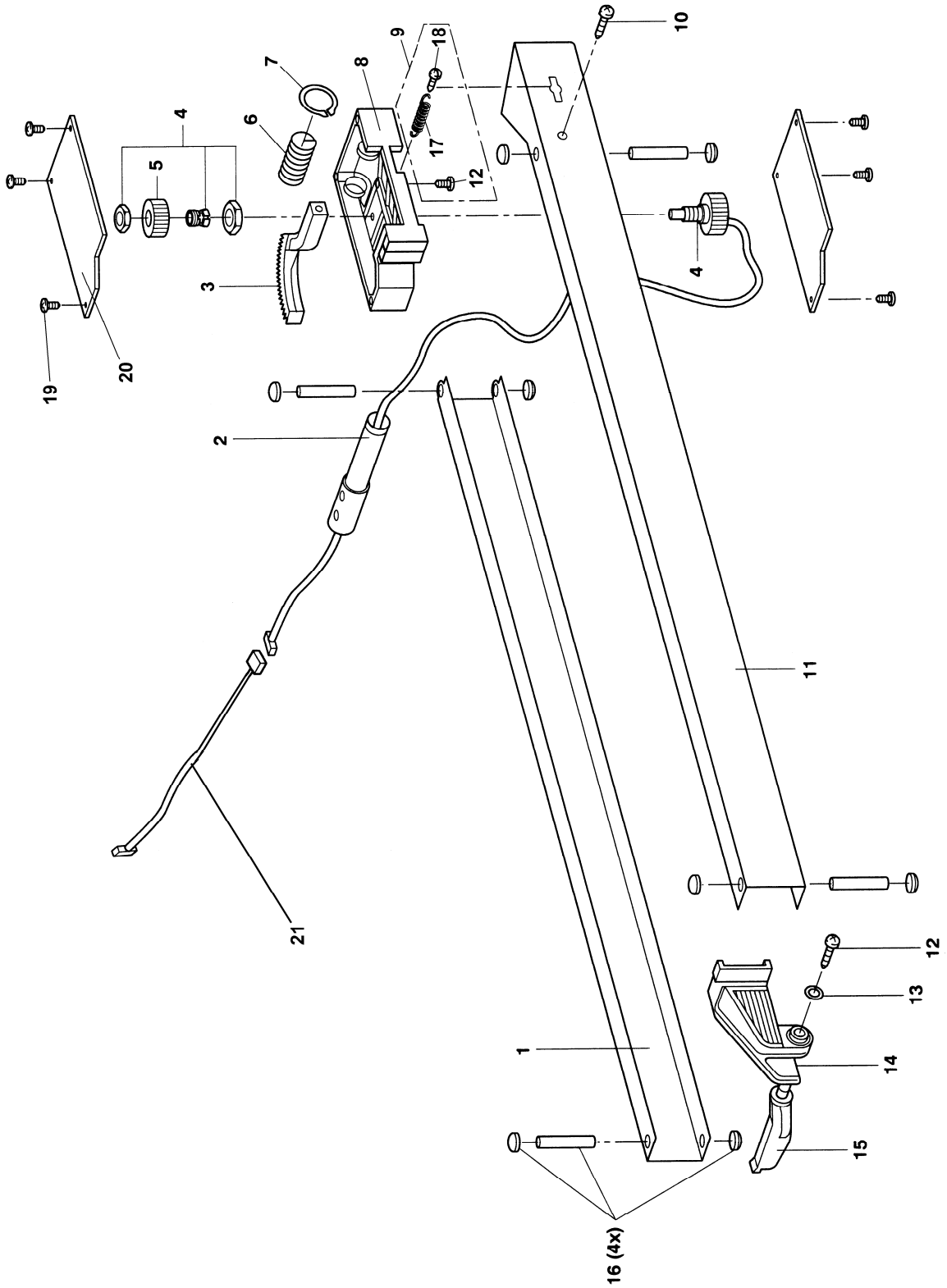


Figure 5B: Width Gauge Arm 2800 / 2800p

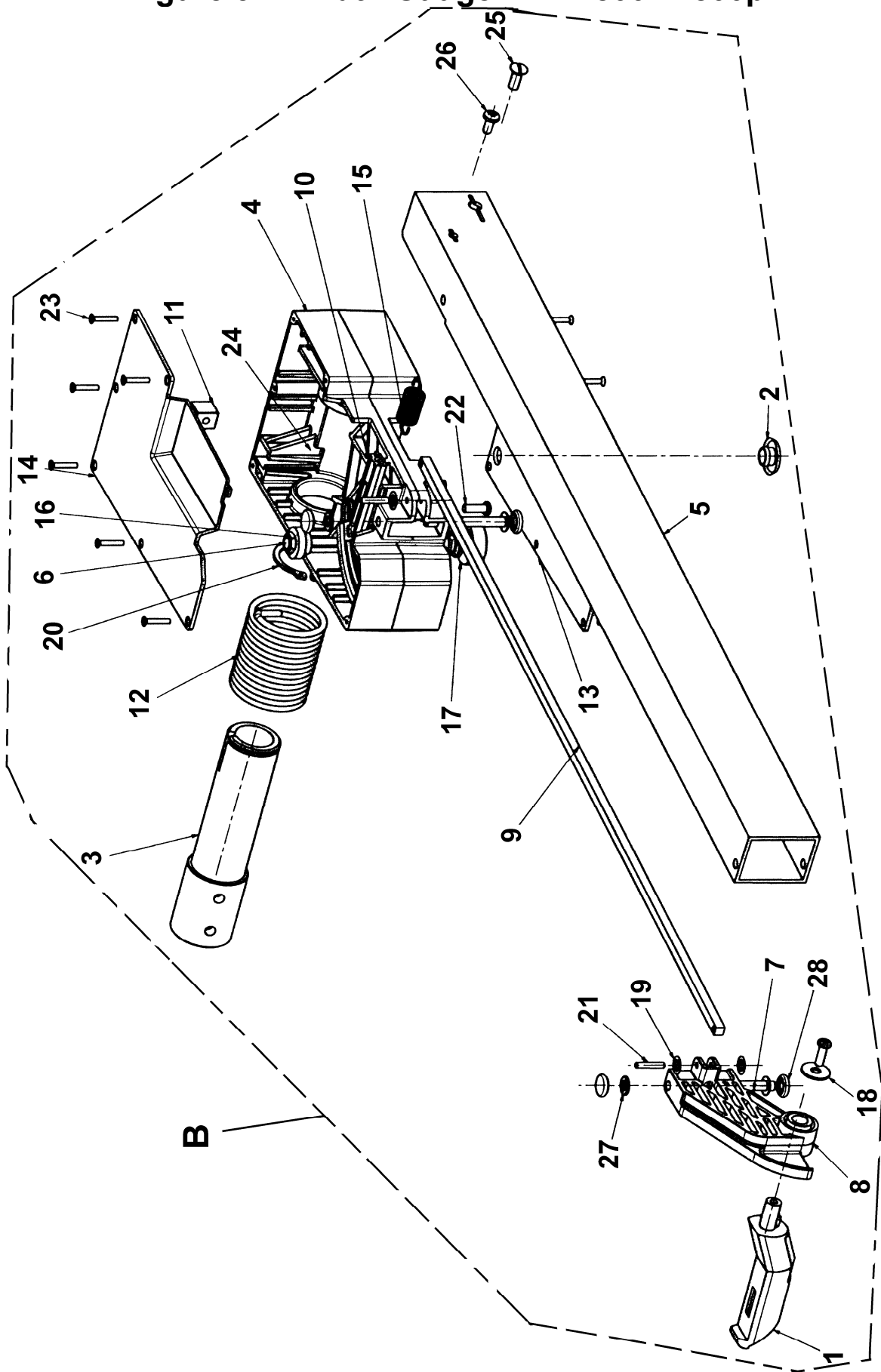


Figure 6: Wheel Guard

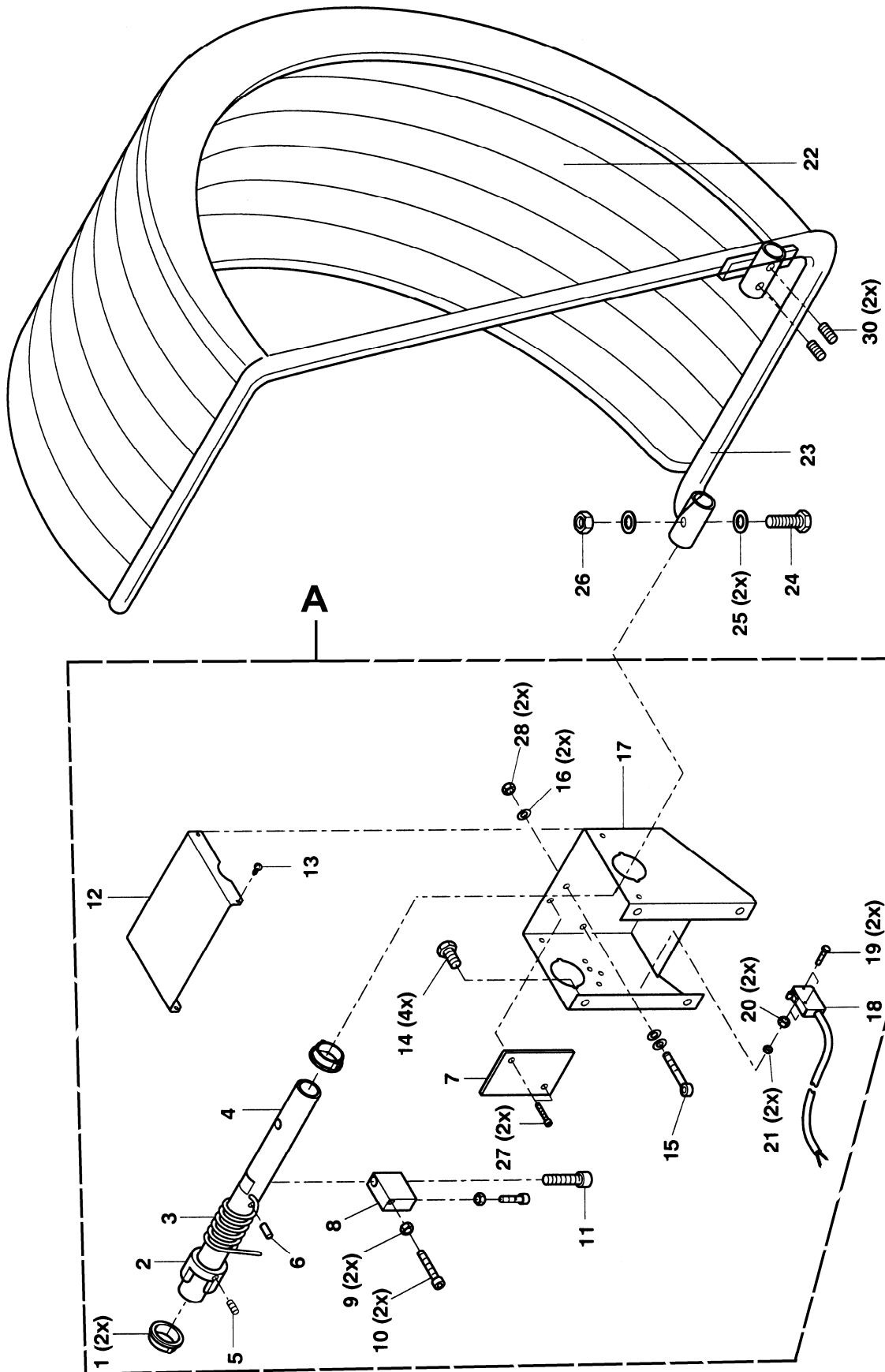


Figure 7: Power Clamp Device 2800p

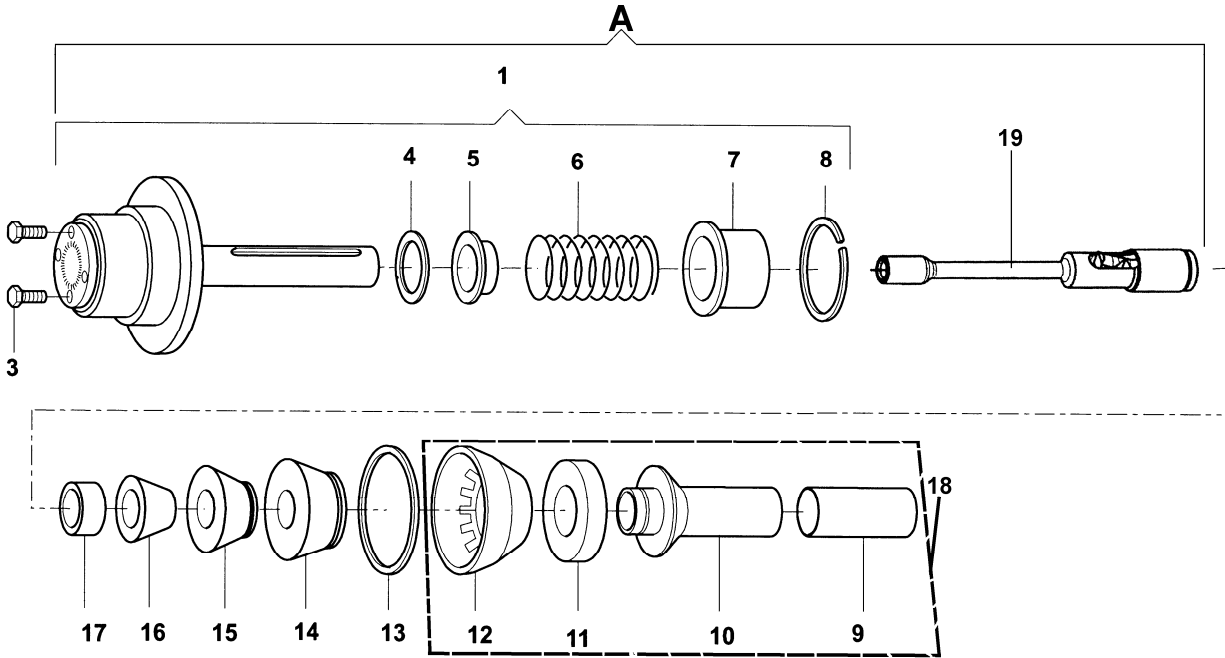


Figure 8A: Brake Pedal Assembly 2800p Version I

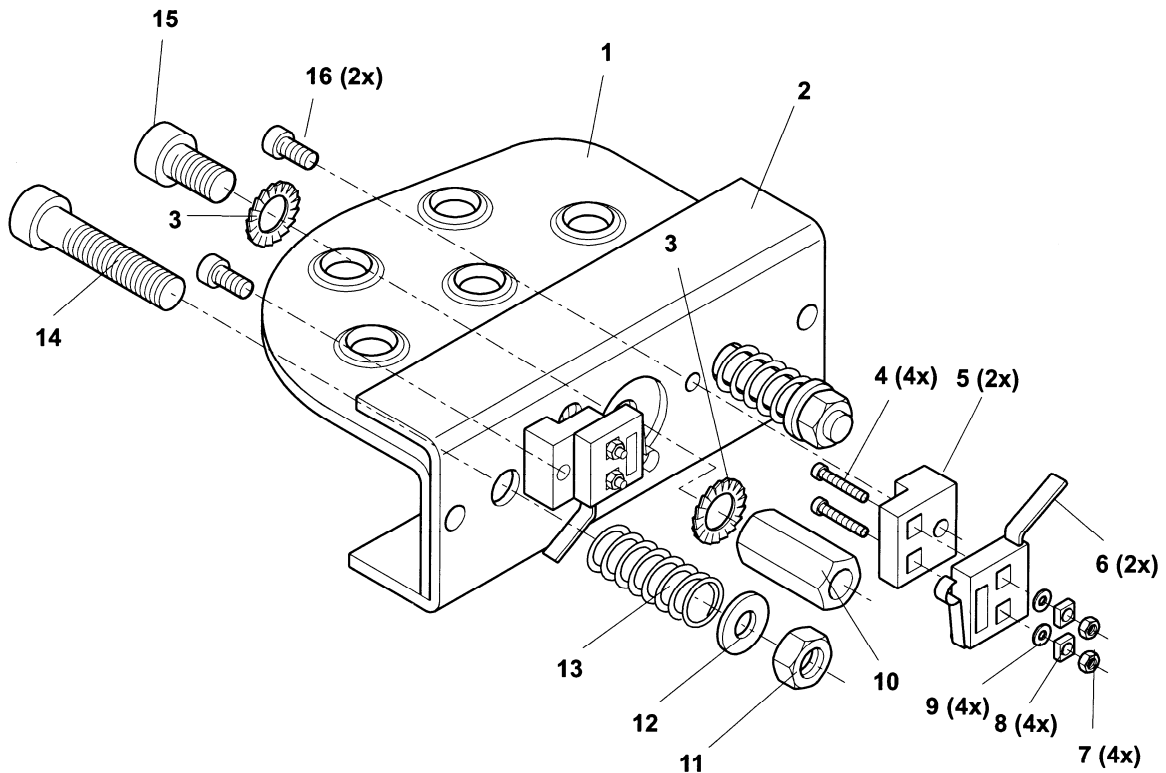


Figure 8B: Brake Pedal Assembly 2800p Version II

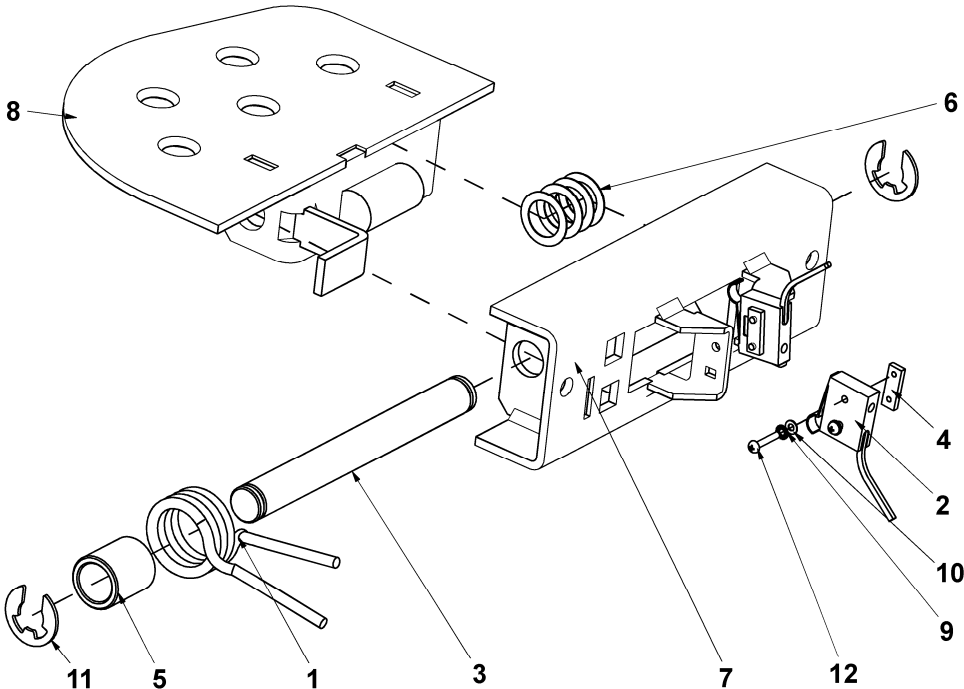
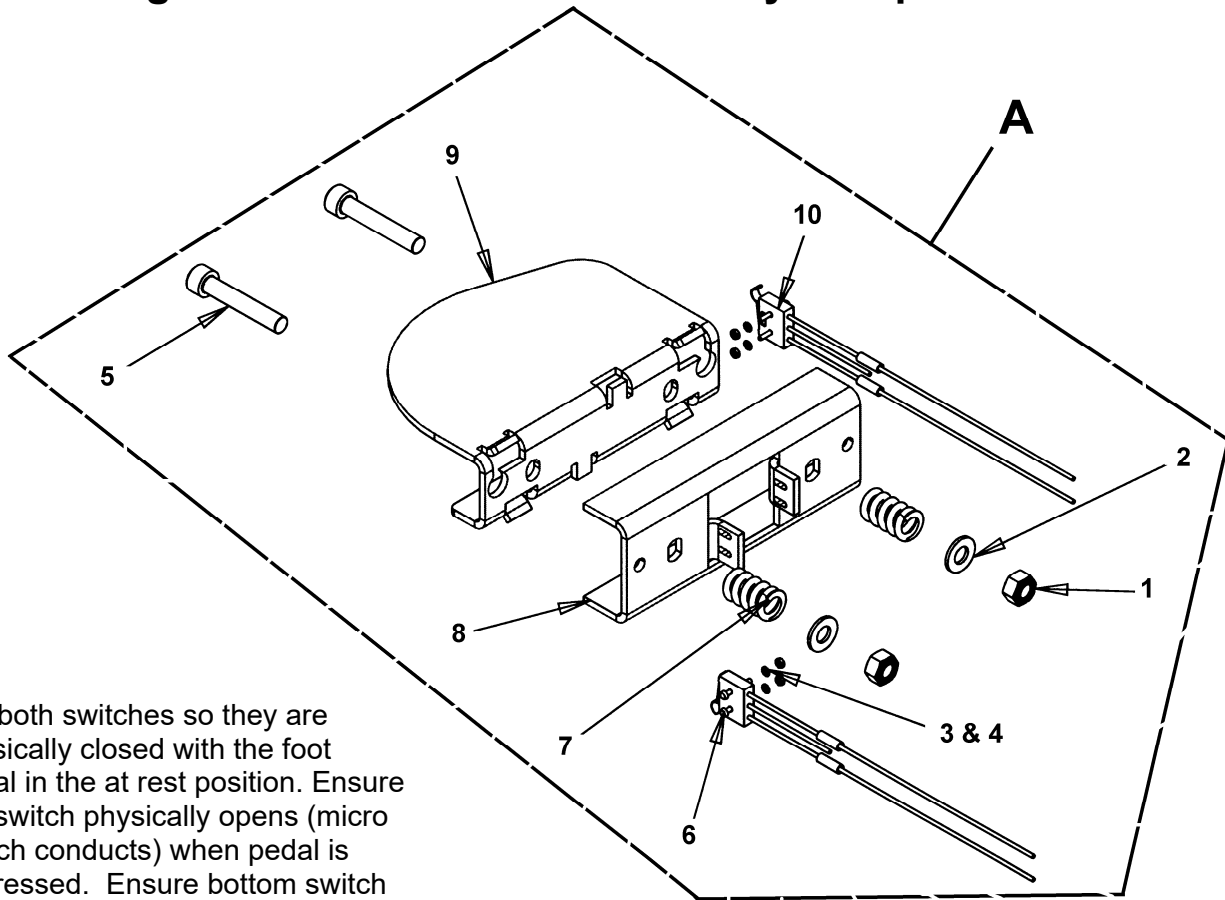
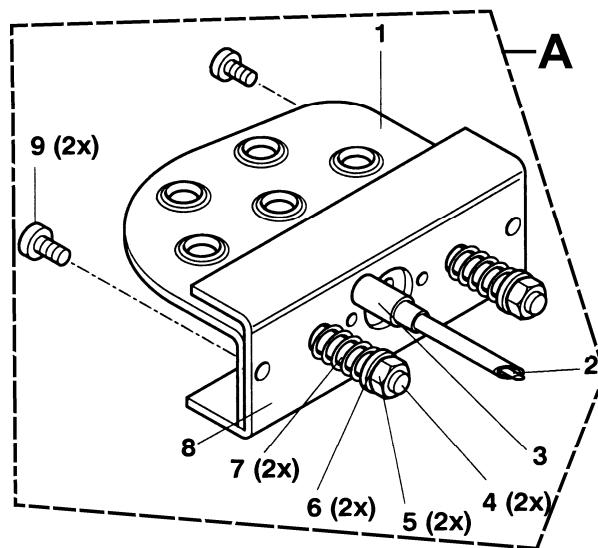


Figure 8C: Brake Pedal Assembly 2800p Version III

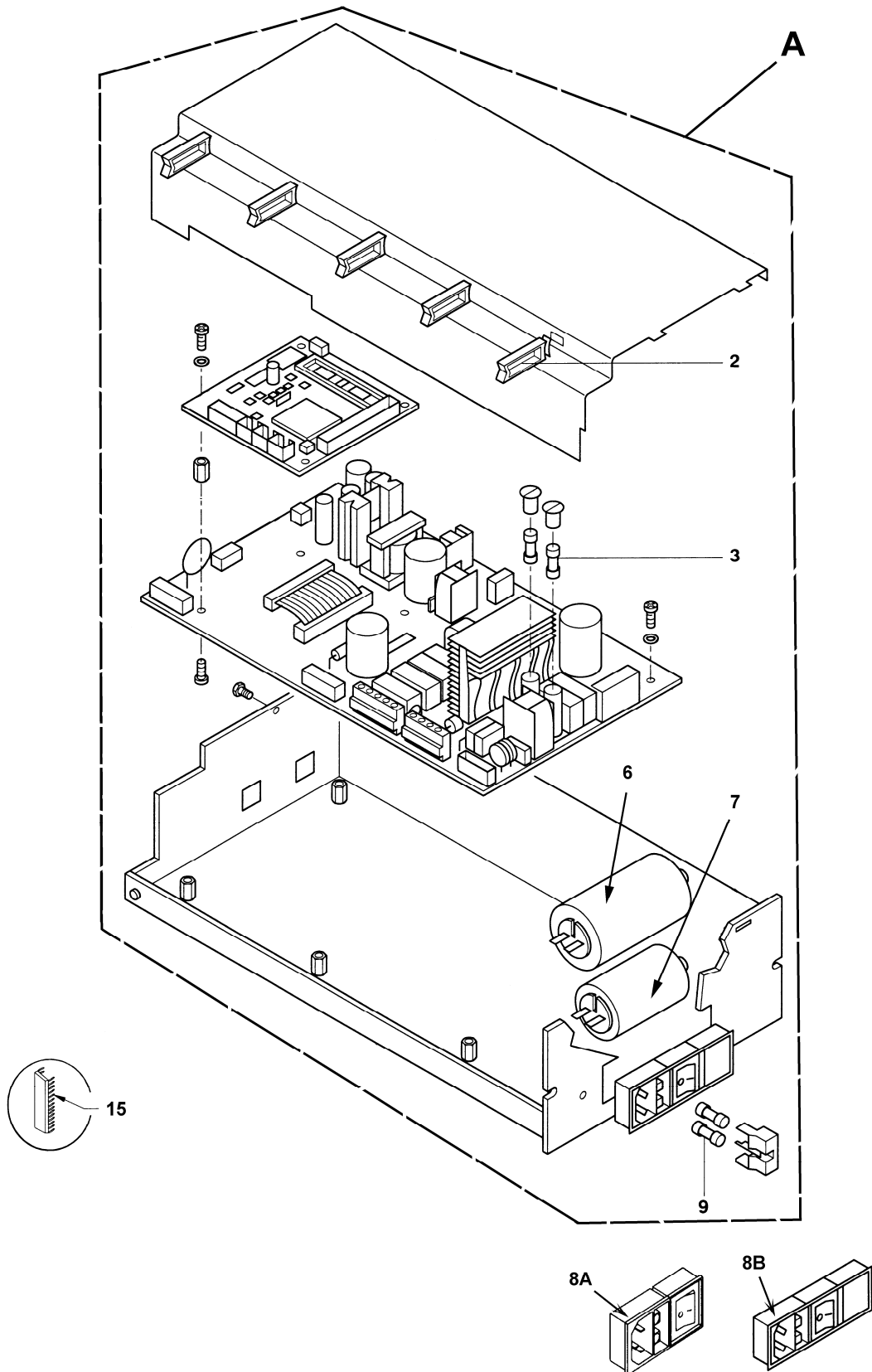


Set both switches so they are physically closed with the foot pedal in the at rest position. Ensure top switch physically opens (micro switch conducts) when pedal is depressed. Ensure bottom switch physically opens (micro switch conducts) when pedal is raised.

Figure 9: Brake Pedal Assembly



**Figure 10A: Y2K Electronic Box
(Up to Sep 07 JA)**



**Figure 10B IBP Electronic Box
(From Oct 07 KA)**

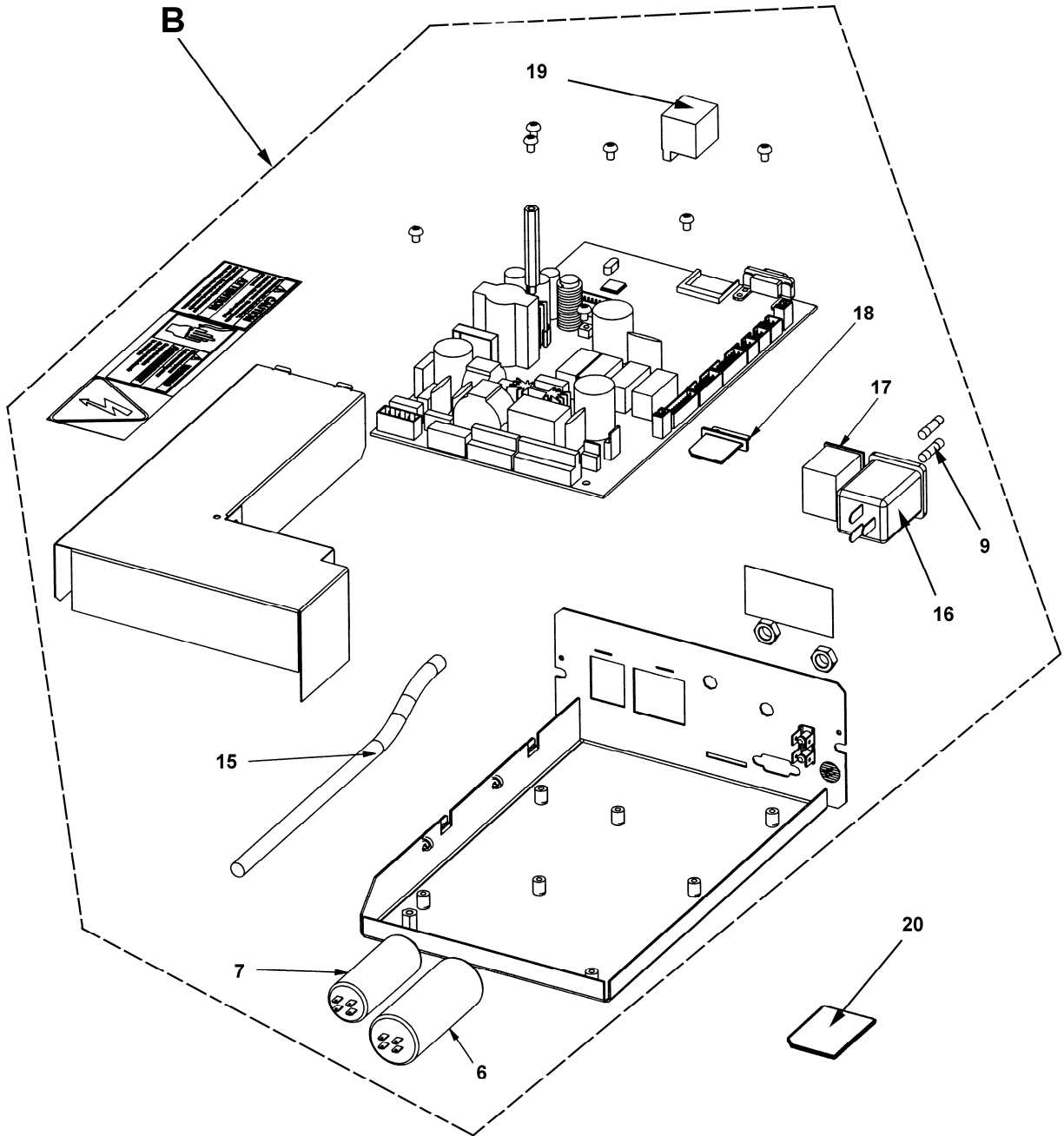
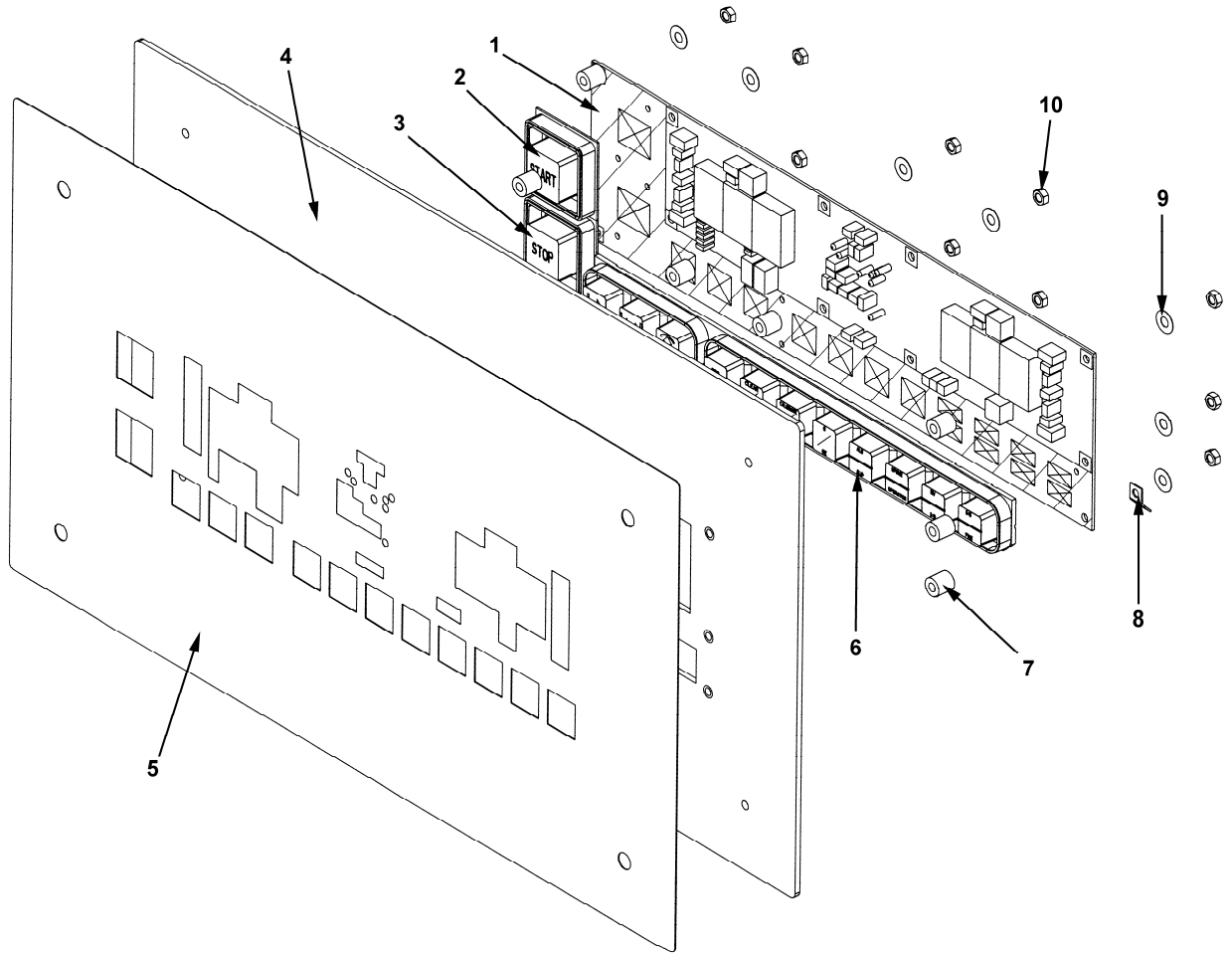


Figure 11: Display Panel



No.	Part Number	Part Description	Spec.	HWT No.
-----	-------------	------------------	-------	---------

Fig. 1: Vibratory System 2600/2800				
---	--	--	--	--

1	EAA0344G01A	Vibratory system assembly (EAA0277D47A)		6418 868
2	EAM0005D12A	Drive pulley		6418 343
3	1-17841	Washer	8.4	1640 080
4	1-32901	Hexagon head screw	M8 x 35	1530 098
5	8-3531	Belt	5PJ711	1252 584
6	EAA0266D29A	Motor - UL	WS 120W	6792 087
7	EAM0005D08A	Motor pulley		6418 405
8	1-28410	Setscrew	M6 x 8	1527 016
9	EAM0005D09A	Spacer for motor		6418 415
10	1-9841	Washer	B 6.4	1641 060
11	1-30701	Hexagon head screw	M6 x 12	1530 072
12	EAA0332G12A	Main shaft lock assembly		6418 303
13A	1-13004	Screw (for EAP0167G60A)	M4 x 6	1509 010
13B	1-13404A	Screw (for EAA0344G00A)	M4 x 16	1509 021
14	EAA0260D59A	Transducers (Pickups)		6717 253
15A	EAP0167G60A	Opto-electronic unit (without lens) (EAP0201D50A)		6726 387
15B	EAA0344G00A	Opto-electronic unit (with lens) (EAA0260D09A)		6705 996
16	EAA0328G16A	Fastening means for transducer		6419 192
17	1-17709	Hex. socket head cap screw	M8 x 20	1524 060
18	EAS2025D03A	Spacer for vibratory system		6418 337
19A	EAW0239D00A	Ribbon Cable with temperature sensor		6792 035
19B	EAW0240G67A	Ribbon Cable without temperature sensor		
20	EAS2025D12A	Clip		1628 090
21	EAM0005D18A	Spacer		6418 894
22	EAC0087G54A	Plastic protection for EAA0344G00A		
23	EAC0087G55A	Vibratory system bearing cover		
*		Ribbon cable w/temp. sensor & pickups		6792 069

No.	Part Number	Part Description	Spec.	HWT No.
-----	-------------	------------------	-------	---------

Fig. 2: Vibratory System 2800p				
---------------------------------------	--	--	--	--

	EAA0344G06A	Vibratory system of "p" balancers (EAA0306D97A)		6419 100
1	1-9641	Washer	125	1641 040
2A	1-13004	Screw (for EAP0167G60A)	M4 x 6	1509 010
2B	1-13404A	Screw (for EAA0344G00A)	M4 x 16	1509 021
3A	EAP0167G60A	Opto-electronic unit (without lens) (EAP0201D50A)		6726 387
3B	EAA0344G00A	Opto-electronic unit (with lens) (EAA0260D09A)		6705 996
4	EAS2025D12A	Clip		1628 090
5A	EAW0239D00A	Ribbon Cable with temperature sensor		6792 035
5B	EAW0240G67A	Ribbon Cable without temperature sensor		
6	EAM0005D57A	Bayonet disc		6416 154
7	EAM0021D31A	Yoke		6419 068
8	EAM0021D32A	Clamp		6414 419
9	1-09784A	Inner ring	LR25 x 30 x 38.5	1353 018
10	1-14977A	Circlip	23.5 x 1.75 x 1.2	1656 025
11	EAM0021D30A	Cylindrical pin	10m x 24	6419 076
12	EAM0021D51A	Compression spring	1.1 x 7.4 x 41.5	1613 106
13		Fastening means of bayonet disc		6417 758
14	EAA0328G16A	Fastening means for transducer		6419 192
15	1-17709	Hex. socket head cap screw	M8 x 20	1524 060
16	EAS2025D03A	Spacer for vibratory system		6418 337
17	EAA0260D59A	Transducers (Pickups)		6717 253
18	EAA0277D98A	Vibratory system of "p" balancers without drive unit and transducers		6419 323
19	1-09684A	Parallel key	A6 x 6 x 40	1692 040
20	EAM0021D17A	Intermediate clip	40 x 9	6418 497
21	EAA0283D86A	Brake disc repair kit		6419 491
22	EAK0257G05A	Spacer plates for brake set (Consists of 6 pc – 2 x .5 mm & 4 x .2 mm)		6417 671
23	EAM0005D64A	Code bar		6419 096

No.	Part Number	Part Description	Spec.	HWT No.
24	EAM0021D18A	Drive pulley "p"		6418 498
25	1-03063A	Angular contact ball bearing		1312 062
26	1-15077A	Circlip		1656 130
27	1-48710A	Setscrew	M5 x 8	1527 012
28	EAM0021D19A	Pressure ring "p"		6418 496
29	EAM0005D08A	Motor pulley		6418 405
30	1-28410	Setscrew	M6 x 8	1527 016
31	EAA0266D29A	UL motor		6792 087
32	EAM0005D44A	Spacer for motor		6419 024
33	1-05747A	Tooth washer	J4	1644 004
34	EAP0201D20A	Power clamp opto		6726 392
35	1-13004	Oval head screw	M4 x 6	1509 010
36	EAA0307G36A	Replacement kit "p" – die-cast nut		6419 311
37	1-9841	Washer	B6.4	1641 060
38	1-30701	Hexagon bolt	M6 x 12	1530 072
39	EAM0021D16A	Sleeve	6.2 x 14 x 7	6418 724
40	EAC0087G54A	Plastic protection for EAA0344G00A		
41	EAC0087G55A	Vibratory System bearing cover		
*		Cable with pickups & sensor		6792 069

Fig. 3: Chassis & Weight Tray

1	EAA0263G69B	Display Panel Assembly (For Individual Items See Figure 11)		6419 392
2		Screw	M4 x 10	1509 022
3		Seal		6419 424
4	EAS2025D70B	Display casing assembly (metal box with inserts)		6419 429
5	EAM0005D40A	Calibration weight		6418 981
6	8-01250A	Wrench		1101 013
7	EAC0058D42A	Weight tray		6419 368
8	1-03725A	Tapping screw	6.3 x 32	1532 532
9	666204	Self-tapping screw	M5 x 10	1532 618

No.	Part Number	Part Description	Spec.	HWT No.
10	EAX0039J00A	Power cord		4206 151
11	466051	Cap		4238 517
12	1-07824A	Screw	M5 x 10	1532 621
13	EAS2103J22A	Cover of vibratory system		6419 142
14		Pedal assembly (see Fig. 8 or 9)		
15A	EAL0345D14A	Decal geodyna 2600		4082 372
15B	EAL0345D15A	Decal geodyna 2800		4082 373
15C	EAL0341J55A	Decal geodyna 2800p		4082 379
16	8-7216	Cap		4238 507
17	7-16201A	Transformer 115 V – 230 V (7-00902A) (7-15601A)		4501 082
	EAW0233J07A	Wiring harness for transformer (Not Shown)		
18	666204	Screw	M5 x 10	1532 618
19		Electronic box assembly (see Fig. 10A or 10B)		
20	EAM0006G01A	Stud		6419 156
21	EAC0060G02A	Cover plate		6419 157
22		Pipe complete with lead		6419 430
23	EAM0033D10A	Clip	Ø 36	1480 888
24	1-21141A	Washer		1643 064
25	1-31801	Screw	M6 x 65	1530 083
26		Screw	M6 x 80	1530 085
27	EAM0005D18A	Spacer		6418 894
28		Holder assembly		6419 431
29	1-16809	Screw	M6 x 40	1524 047
30		Bellows		1723 252
31		Protective rubber sleeve		4238 125
33	EAA0247G21A	Rim width calipers (2600 only)		2900 007
34	EAW0233J04A	Ribbon cable for display board (Board to box)		
37A	EAS2113J83A	Cover under vibratory for 2600, 2800		
37B	EAS2113J85A	Cover under vibratory for 2800p		
38	EAL0341J02A	Ounce stickers for pockets (Optional)		
39	EAL0341G10A	Gram stickers for pockets (Optional)		
40	1-17909	Screw	M8 x 30	

No.	Part Number	Part Description	Spec.	HWT No.
41	1-10041	Washer	M8	
42	EAS2113J54A	Clamp for tower		
43	EAA0346J60A	Tower		
44	1-17709	Screw	M8 x 20	
45	1-446	Split Lock Washer		
46	EAS2103J58A	Plate for Tower		

Fig. 4: Distance / Diameter Gauge Assembly

B	EAA0346J85A	Drop In Distance / Diameter gauge assembly		
1	EAA0277D94A	Gauge arm assembly with ejector		6419 215
2	1-3824	Screw	M6 x 12	1532 662
3	EAL0349G31A	Scale		6418 516
4	EAM0005D37A	Gauge arm		6418 515
5	2-07657A	Collet with nut		3390 902
6	EAC0058D06A	Pulley		1701 008
7	EAA0266D20A	Potentiometer with lead		6792 037
8	1-03267A	Tension spring		6418 523
9	EAK0221J06A2	Rope complete with rings		6419 105
10	EAM0005D35A	Rope pulley		6418 521
11		Hexagon socket head cap screw	M4 x 16	1524 016
12		Connector		3049 450
13	EAM0005D38A	Collar-end bushing, short		6418 517
14	1-4577	Circlip	A-25	1657 025
15	EAC0058D12A	Gear wheel, big		1235 539
16	1-11226A	Special screw		1538 945
17	EAC0058D13A	Gear wheel for potentiometer		1235 538
18		Angular support		6418 527
19	1-07162A	Shim	28 x 40 x 0.5	1645 140
20		Circlip	A-27	1657 027
21	666204	Self-tapping screw	M5 x 10	1532 618

No.	Part Number	Part Description	Spec.	HWT No.
22	EAM0005D39A	Collar-end bushing, long		6418 512
23	1-27903A	Screw	M6 x 14	
24	1-25433A	Nut	M6	
25	EAM0053G19A	Gauge rod (433 mm long)		
26	EAC0087G60A	Distance gauge bracket		
28	1-06567A	Tension Spring		
29	1-11233	Nut	M3	
30	EAK0221J65A	Rope M1	23.5" long	
31	1-9641	Washer	D4	
32	1-13909	Screw	M4 x 30	
33	1-13609	Screw	M4-16 x 8.8	

Fig. 5A: Width Gauge Arm 2800/2800p

1	EAS2025D35A	Inner plate, silver		6419 168
2	EAM0005D68A	Pivot		6419 175
3	EAC0058D31A	Tooth segment		1701 553
4	EAA0266D24A	Potentiometer with lead, nuts and collet		6792 070
5	EAC0058D23A	Gear wheel for potentiometer		1235 535
6		Leg spring		1614 015
7	941233	Circlip		1657 024
8	EAC0058D30A	Joint head		1701 552
9		Tension spring with fastening means		6417 776
10	1-1825	Tapping screw	B 4.2 x 9.5	1532 177
11	EAS2025D34A	Outer plate, silver		6419 167
12	1-11226A	Special screw	M4 x 12	1538 945
13	1-16641	Washer	5.3	1640 050
14	EAC0058D32A	Gauge head assembly		1701 550
15	EAC0058D33A	Gauge finger		1701 551
16	EAA0328G24A	Bolt (1 set = 4 pieces)		6417 774
17	1-04067A	Tension Spring	Z-0861	1621 083

No.	Part Number	Part Description	Spec.	HWT No.
18	1-02905A	Screw	M5 x 12	1504 255
19	1-06924A	Screw	M2.5 x 13	1538 951
20	EAC0058D34A	Top & Bottom Cover		1701 554
21	EAW0233J47A	Ribbon cable (From Electronic box to chassis)		6792 074

Fig. 5B: Width Gauge Arm 2800/2800p

B	EAA0348G73A	Complete Width Arm Assembly		
1	EAC0058D33A	Finger		
2	1-11176A	Plastic Cap	9.5 mm	
3	EAM0063G42A	Shaft		
4	EAC0096G65A	Housing		
5	EAM0062G51A	Tube		
6	EAC0096G98A	Gear		
7	EAM0069G04A	Pin	D5 x 48 m6	
8	EAC0096G67A	Caliper head		
9	EAM0062G74A	Rod		
10	EAC0096G97A	Tooth spring		
11	EAM0065G72A	Spring pawl		
12	1-06967A	Spring Torsion		
13	EAC0097G25A	Bottom Cover		
14	EAC0096G99A	Upper Cover		
15	1-07167A	Tension Spring		
16	2-07657A	Clamping device w/nut		
17	EAA0266D24A	Potentiometer w/cable		
18	1-19341A	Washer Flat	5.3 x 15	
19	1-18277A	Quick Lock Ring	D3	
20	1-4777	Retaining Ring	D28	
21	1-22052A	Cylindrical Pin	D3 x 16	
22	1-09326A	Screw – Pan head	4 x 12mm	

No.	Part Number	Part Description	Spec.	HWT No.
23	1-06924A	Screw Self Tap	D2 5 x 13	
24	1-53810A	Dowel Flat Point	M6 x 25	
25	1-02905A	Screw Oval Slot	M5 x 12 – 4.8	
26	1-1825	Self – Tapping Screw	4.2 x 9.5	
27	1-6844	Washer Plastic		
28	1-02043A	Washer – Spring w/cover		

Fig. 6: Wheel Guard

A	EAA0255J72A	Wheel guard assembly		
1	EAC0058D36A	Collar-end bushing		1324 032
2	EAC0058D38A	Switch ring		1631 040
3	1-04267A	Leg spring		1614 017
4	EAM0021D02A	Arbor		6419 370
5	1-49010A	Setscrew	M8 x 8	1528 035
6		Clamping pin		1684 090
7		Stop plate		6419 383
8	EAM0021D39A	Stop pad		6419 410
9	1-04634A	Hexagon nut	M10	1556 100
10A	1-47709A	Hexagon socket head cap screw (Top stop)	M10 x 20	1535 071
10B	1-19109	Hexagon socket head cap screw (Bottom stop)	M10 x 25	
11	1-20409	Hexagon socket head cap screw	M12 x 35	1524 103
12	EAS2025D33A	Panel		6419 149
13	1-17923	Tapping screw	4.2 x 13	1532 178
14	1-32601	Hexagon head screw	M8 x 20	1530 094
15	1-01530	Eyebolt	M8 x 50	1514 025
16	1-10041	Washer	8.4	1641 080
17	EAS2103J53A	Rear enclosure		6419 386
18	EAW0233J08A	Micro-switch		4402 110
19		Hexagon head screw	M3 x 25	1530 025
20	1-11533	Hexagon nut	M5	1555 050

No.	Part Number	Part Description	Spec.	HWT No.
21	1-19233A	Hexagon nut	M3	1557 030
22		Wheel guard		2800 051
23	EAM0050J00A	Wheel guard tube (EAM0005D00A)		6419 310
24	1-35001	Hexagon head screw	M10 x 55	1530 124
25	1-10141	Washer	10.5	1641 100
26	1-18733A	Hexagon nut	M10	1557 101
27	666204	Screw	M5 x 10	1532 618
28	1-11733	Nut	M8	1555 080
30		Setscrew	M6 x 8	1528 027

Fig. 7: Power Clamping Device 2800p

A	EAA0350G45A	Power Clamp Assembly		
1	EAA0283D46A	Flange for Power clamp		6419 162
3	1-32701A1	Screw	M8 x 25	1530 095
4	1-18241A	Washer	55 x 68 x 0.5	1645 047
5	EAC0058D14A	Spring centering ring		1701 409
6	1-07768A	Compression spring		1611 364
7	EAS2025D14A	Spring casing		1098 002
8	1-13077	Circlip		1655 092
9	EAC0058D69A	Protective sleeve, long		6419 427
10	EAM0005D54A	Clamping sleeve		6419 426
11	EAC0058D08A	Pressure ring		6418 877
12	EAC0058D07A	Clamping head		6418 876
13	EAC0058D15A	Pressure cup cushion		6419 045
14	EAM0005D25A	Cone 96-116 mm		6418 817
15	EAM0005D24A	Cone 74 - 99 mm		6418 815
16	EAM0005D23A	Cone 42 - 77 mm		6418 814
17	EAC0058D68A	Spacer ring		1701 544
18	EAA0307G54A	Power clamp kit		

No.	Part Number	Part Description	Spec.	HWT No.
19	EAA0283D45A	Pull Shaft with jaws		

Fig. 8A: Brake Pedal Assembly 2800p Version I
--

1	EAS2020P20A	Pedal		1921 300
2	EAS2027G18A	Pedal holder		1921 301
3		Tooth washer		1644 009
4		Screw	M2 x 16	1506 027
5	EAM0006G10A	Spacer		1921 305
6	H4402111	Micro switch (1921 306)		4402 111
7		Nut	M2	1555 021
8		Tooth washer	2.2	1644 001
9	1-9341	Washer	2.2	1641 020
10	EAM0006G11A	Hexagon bar		1621 304
11	1-15633A	Nut	M8	1557 080
12	1-10041	Washer	8.4	1641 080
13	1-06768A	Compression spring		1611 187
14		Screw	M8 x 45	1524 065
15	1-17609	Screw	M8 x 16	1524 059
16		Screw	M4 x 10	1524 014

Fig. 8B: Brake Pedal Assembly 2800p Version II

1	EAM0048G78A	Spring, pedal switch		
2	2-07661A	Microswitch		
3	EAM0046G39A	Pedal pin		
4	EAM0046G40A	Threaded block		
5	EAM0051G96A	Bushing cent. spring br. pedal		
6	1-25241A	Shim ring		
7	EAS2090G15A	Brake pedal support		

No.	Part Number	Part Description	Spec.	HWT No.
8	EAS2089G80A	Welded pedal		
9	1-1048	Washer external shakeproof		
10	1-9341	Washer		
11	1-18477A	Retaining ring		
12	1-9804	Screw, phillips head		

Fig. 8C: Brake Pedal Assembly 2800p Version III

A	EAA0346J82A	Brake Pedal Assembly		
1	1-10033	Hex Nut	M8	
2	1-10041	Washer		
3	1-1048	Washer		
4	1-11033	Hex Nut	M2	
5	1-18209	Screw	M8 x 45	
6	1-36606A	Screw	M2 x 16	
7	1-6668	Compression Spring		
8	EAS2113J93A	Support		
9	EAS2113J94A	Foot Pedal		
10	EAW0233J46A	Switch assembly		

Fig. 9: Brake Pedal Assembly

A	EAA0263G07A	Brake Pedal Assembly		6419 111
1	EAS2020P20A	Pedal		1921 300
2	EAA0260D58A	Bowden cable assembly		1230 808
3	EAM0006G00A	Spacer		1921 302
4		Hexagon socket head cap screw	M8 x 45	1524 065
5	1-10033	Hexagon nut	M8	1557 080
6	1-10041	Washer	8.4	1641 080
7	1-06768A	Compression spring		1611 187

No.	Part Number	Part Description	Spec.	HWT No.
8	EAS2027G18A	Pedal holder		1921 301
9	1-16409	Hexagon socket head cap screw	M6 x 20	1524 043

Fig. 10: Electronic Box

A	EAA0255J75A	Y2K Electronic box. This does not come programmed with any digital UI software (EPROM), order item #15.		6705 946
B	EAA0338G83B	IBP Electronic box. This does not come programmed with any digital UI software (SD), order item #20.		
2		Lead holder		4233 091
3	2-21151A	Fine-wire fuse, slow blow	3.5 AT	3350 325
6	2-01529A	Capacitor	20 MFD.	3762 020
7	2-01429A	Capacitor	10 MFD.	3762 019
8A	2-16851A	Power entry module (2 ½" long)		
8B	2-55748A	Power entry module (3 ½" long)		3950 036
9	2-21251A	Fine-wire fuse, slow blow	6.3 AT	3350 326
15	3-11225A	Digital UI software for the Y2K Electronic Box For models 2350,2400,2600,2800,2800p	Eprom	
16	2-57248A	Filtered power entry module		
17	2-13258A	Main switch		
18	EAC0087G52A	Plug		
19	2-17947A	Socket		
20	3-52226AF1	Digital UI software for the IBP Electronic Box	Secure Digital (SD)	

Fig. 11: Display Panel

1	EAP0192P50A	Display circuit board		0027132
2	EAC0058D50A	Start button		3402 246
3	EAC0058D51A	Stop button		3402 247
4	EAA0263G70B	Display panel only		4027 341

No.	Part Number	Part Description	Spec.	HWT No.
5	EAL0349G27A	Overlay only		0027261
6	EAC0054P10A	Keypad		3402 248
7	1-11762A	Nylon Spacer		
8	2-28301A	Ground Connector		
9	1-5547	External Lock Washer	M4	
10	1-15833A	Hex Nut	M4	



Hofmann – USA 309 Exchange Ave. Conway, AR 72032
 Phone: 800-251-4500 Fax: 501-450-2085 web: www.hofmann-usa.com
 Hofmann – Canada 6500 Milcreek Dr. Mississauga, Ontario L5N 4G4
 Phone: 800-267-2185 Fax: 905-821-2073 web: www.hofmann.ca

Edition: 01/04 Revised 02/19