

geodyna 6300/p 6800/p *premium / optima*

Ersatzteilliste
Spare parts list
Liste des pièces détachées

Radauswuchtmaschine
Wheel balancer
Equilibreuse de roues

HOFMANN®



PAGE BLANK



DIESER ABSCHNITT IST AUSSCHLIESSLICH DEM WARTUNGSFACH-UND KUNDENDIENSTPERSONAL VORBEHALTEN

THIS PART IS FOR EXCLUSIVE USE OF QUALIFIED PERSONNEL FOR MAINTENANCE AND SERVICE PURPOSES.

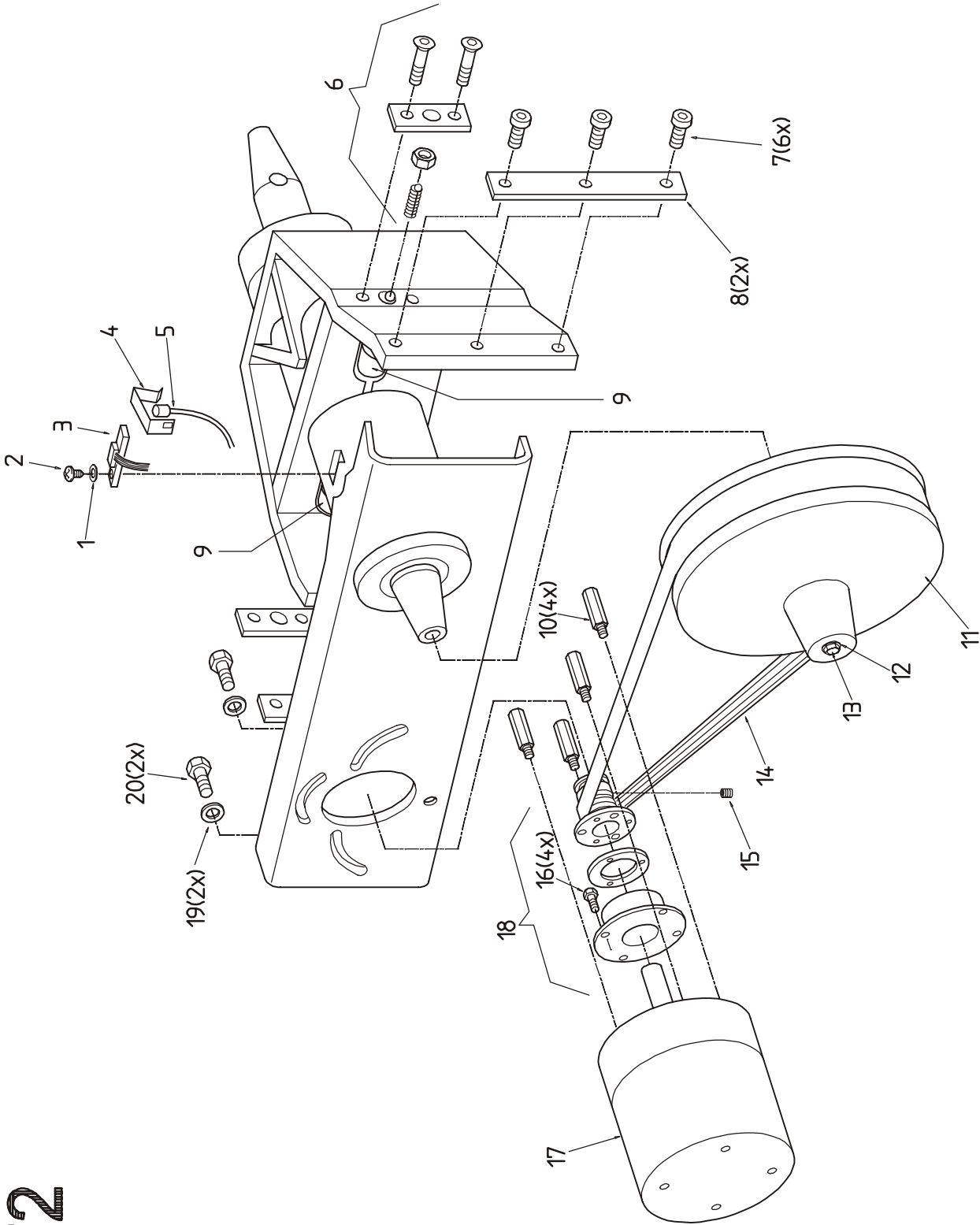
CETTE PARTIE EST RESERVEE AU PERSONNEL QUALIFIE ET AUTORISE A LA MAINTENANCE ET AU SERVICE APRES-VENTE.

QUESTA PARTE É AD USO ESCLUSIVO DEL PERSONALE QUALIFICATO ED AUTORIZZATO ALLA MANUTENZIONE ED ASSISTENZA.

ESTA PARTE ES PARA USO EXCLUSIVO DEL PERSONAL CALIFICADO Y AUTORIZADO PARA EL MANTENIMIENTO Y LA ASISTENCIA.

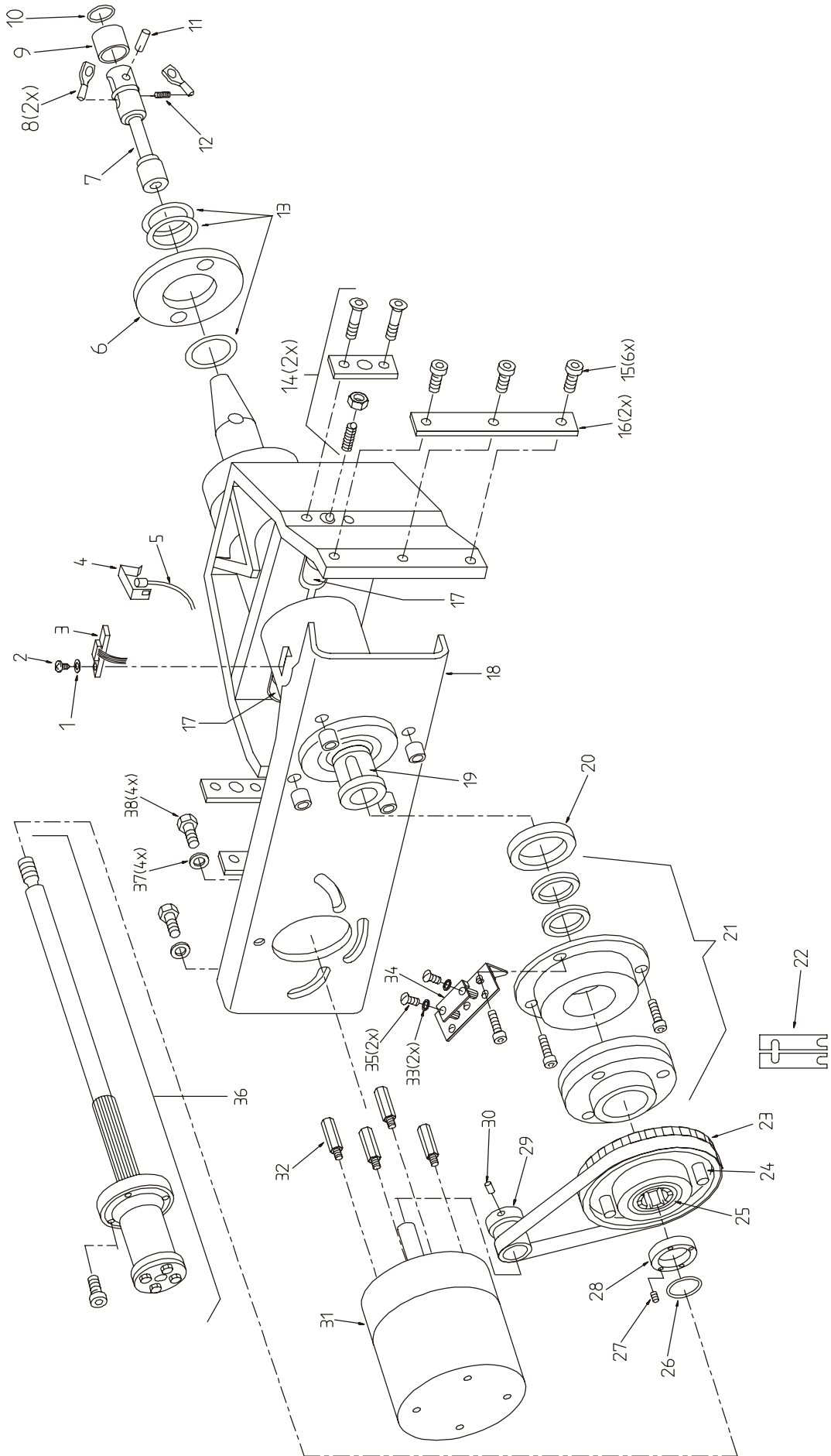
ESTA PARTE ES PARA USO EXCLUSIVO POR PESSOAL ESPECIALIZADO ED AUTORIZADO A LA MANUTENÇÃO

- **Bei Auftragserteilung anzugeben:** Maschinentype, Serinnummer, Artikel-Code, Menge.
- **On order specify:** type of machine and serial number item code and quantity.
- **A la commande:** bien préciser le type de la machine, le n° de serie, la référence de pièce, la quantité.
- **All'ordine specificare:** tipo macchina e matricola, codice e quantità del particolare.
- **En cada pedido hay que especificar:** el tipo de máquina y su número de matrícula, el número de código de la pieza requerida y su cantidad.
- **Na encomenda especifique:** tipo da máquina e número de série, código do item e quantidade.



1472

1471



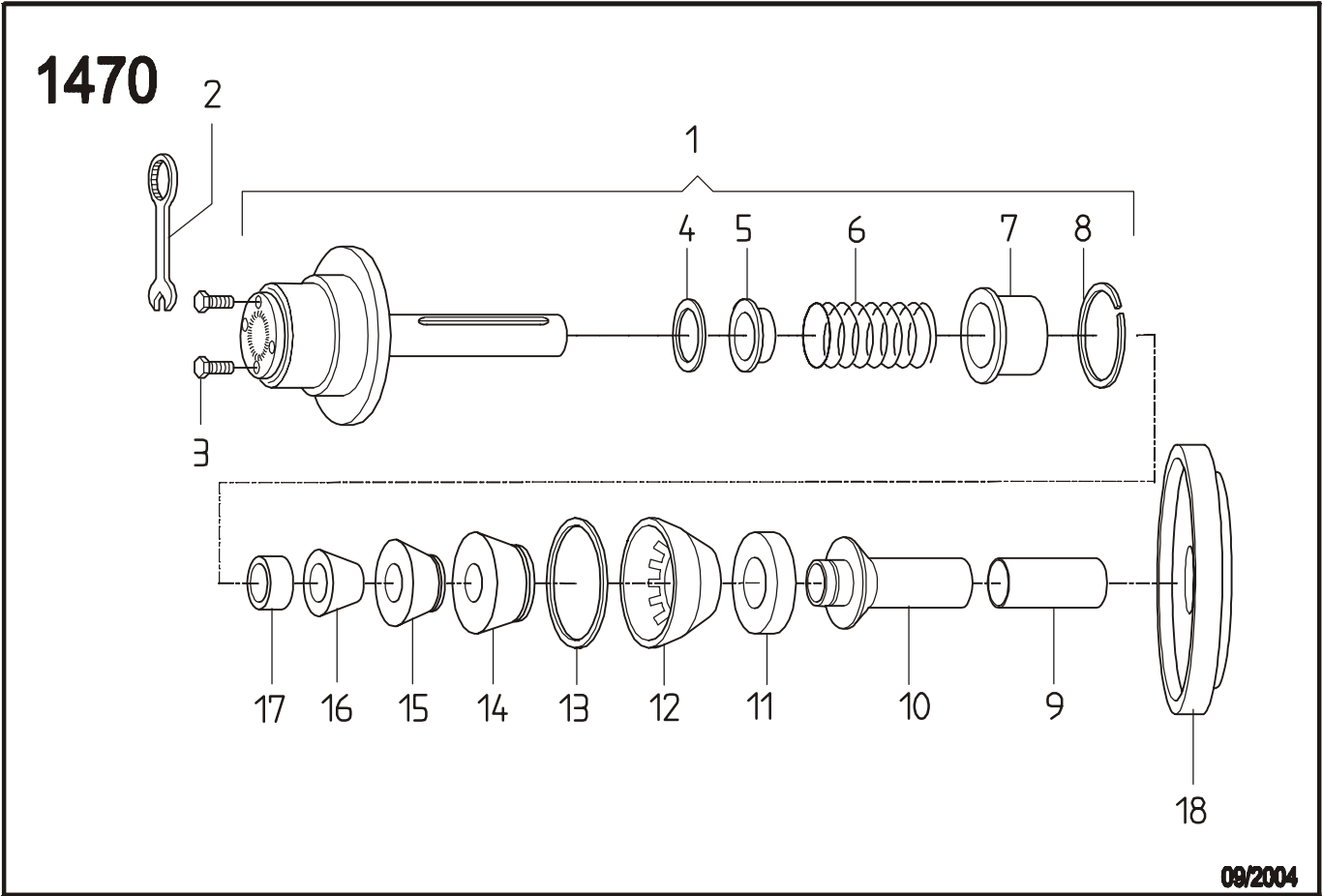
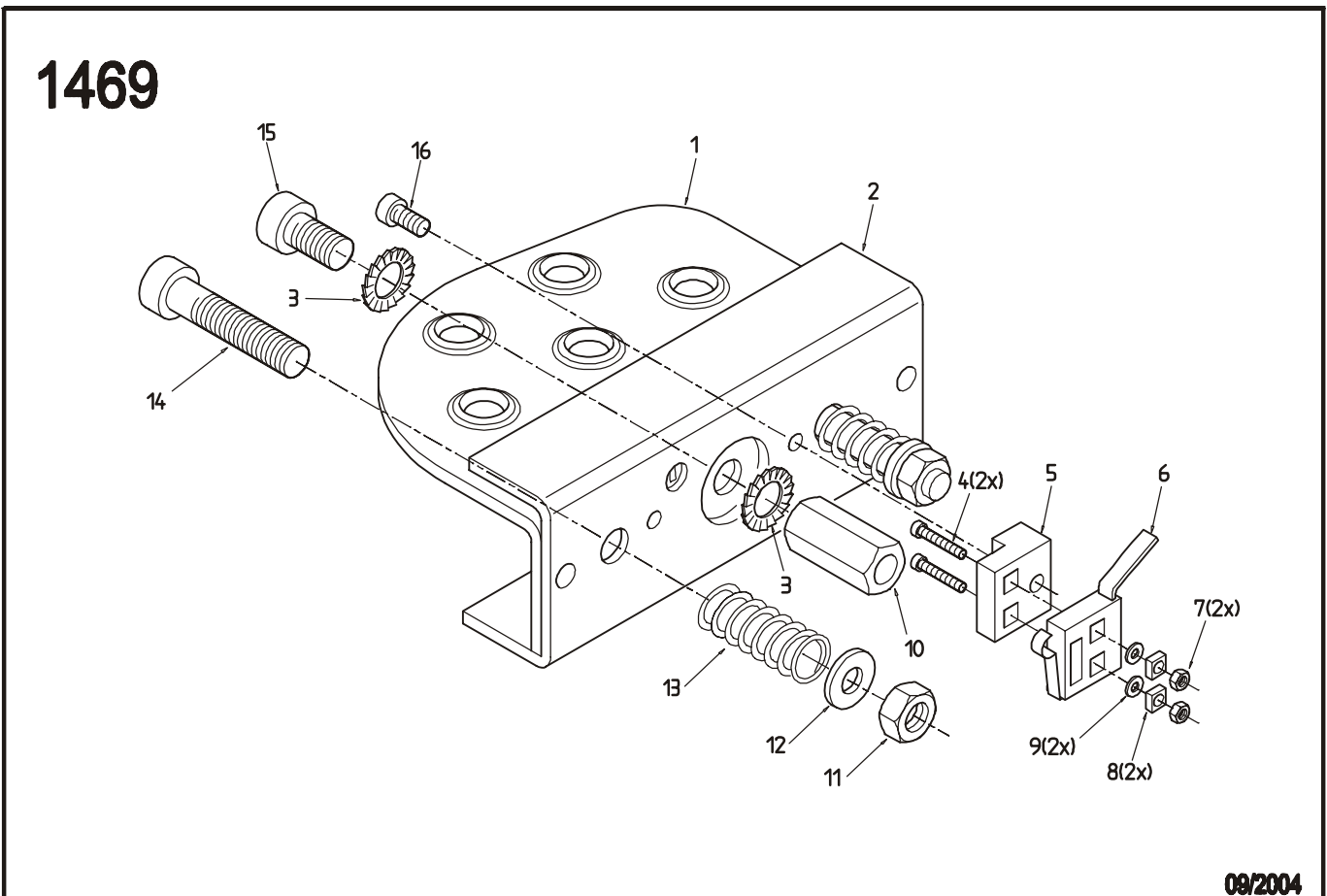
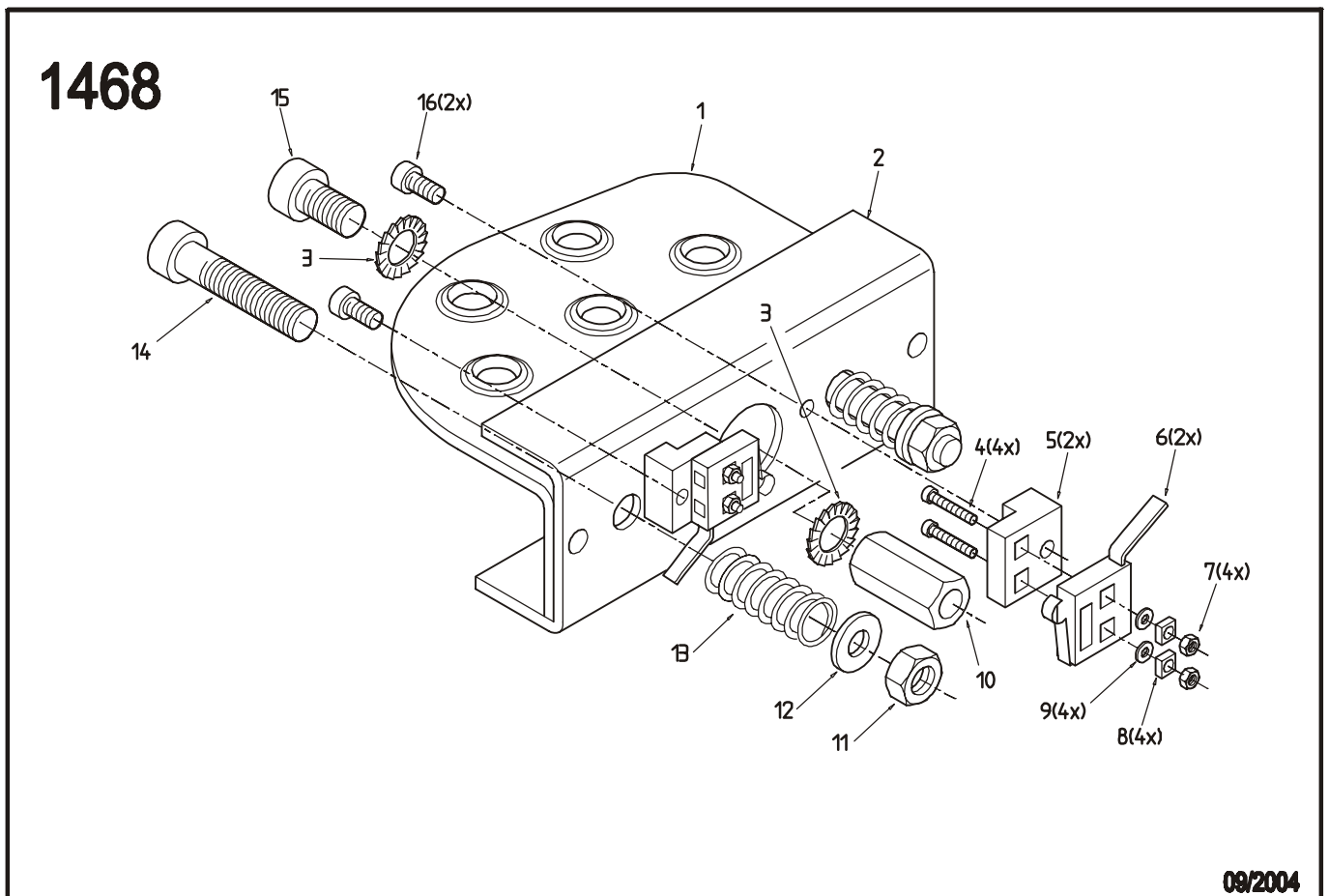


Fig. 1469: Pedal assembly – geodyna 6300, 6800



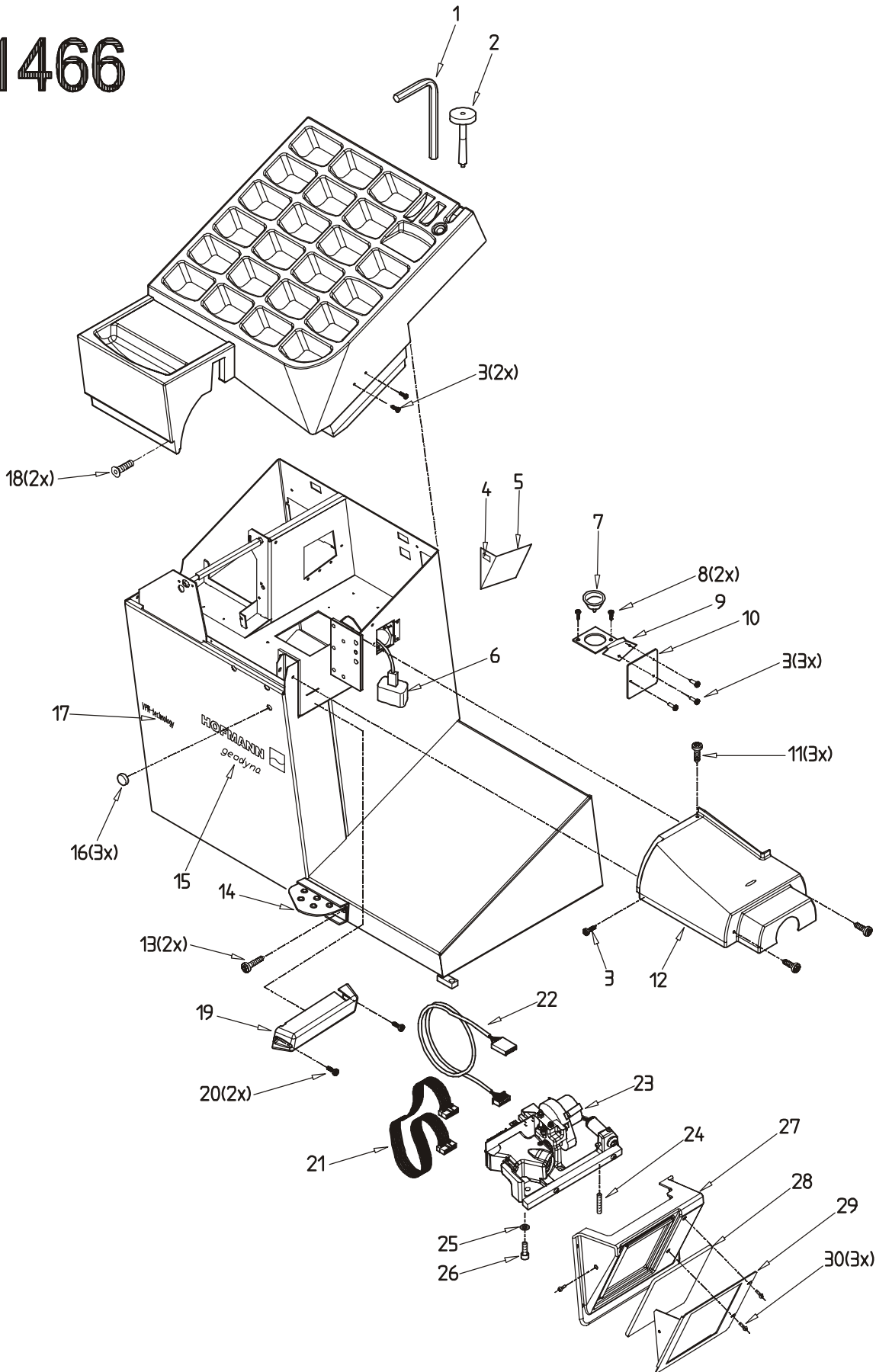
178-c-April-05

Fig. 1468: Pedal assembly – geodyna 6300p, 6800p, 6800 premium, optima



178-c-April-05

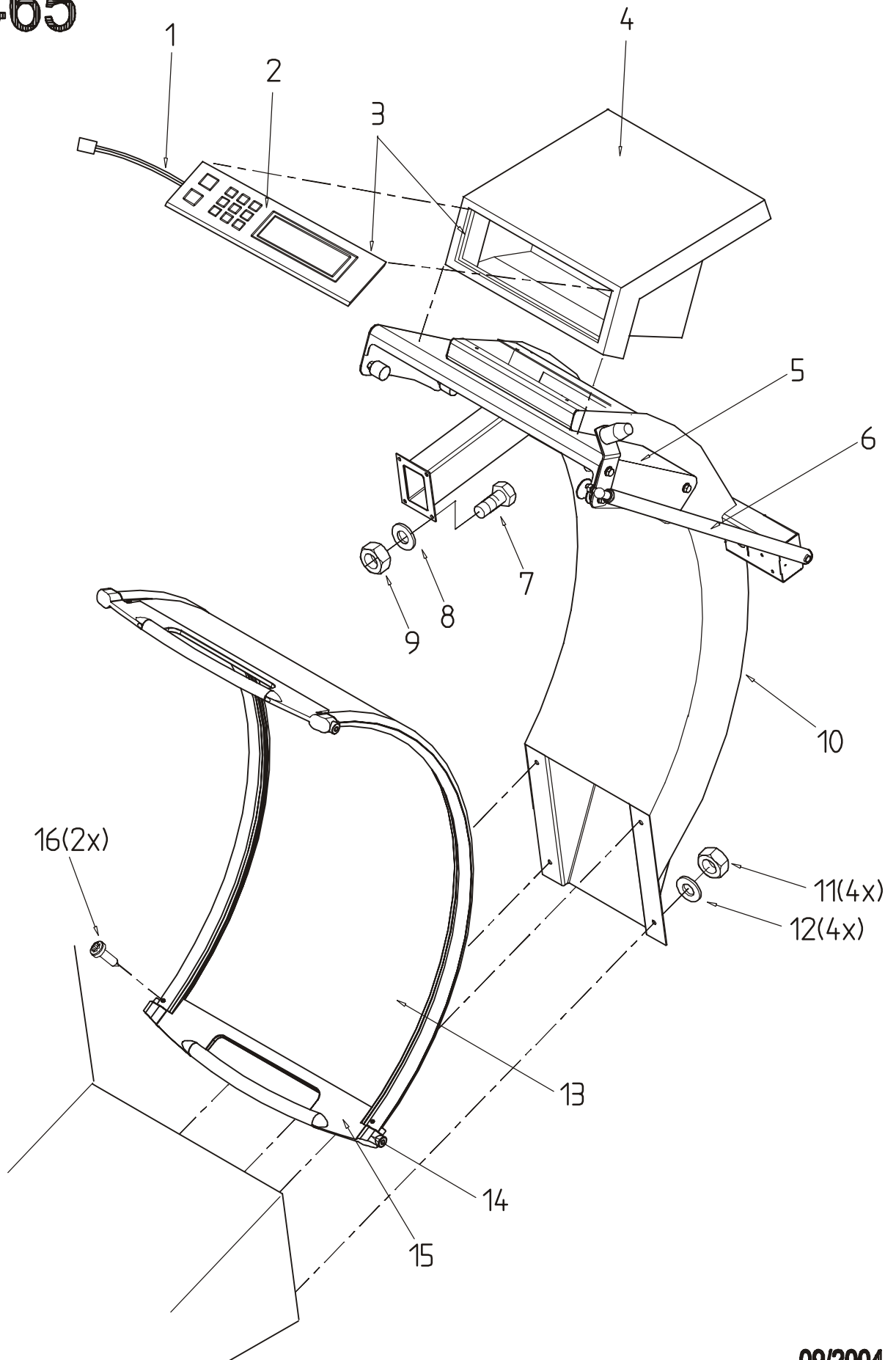
1466



178-c-April-05

09/2004

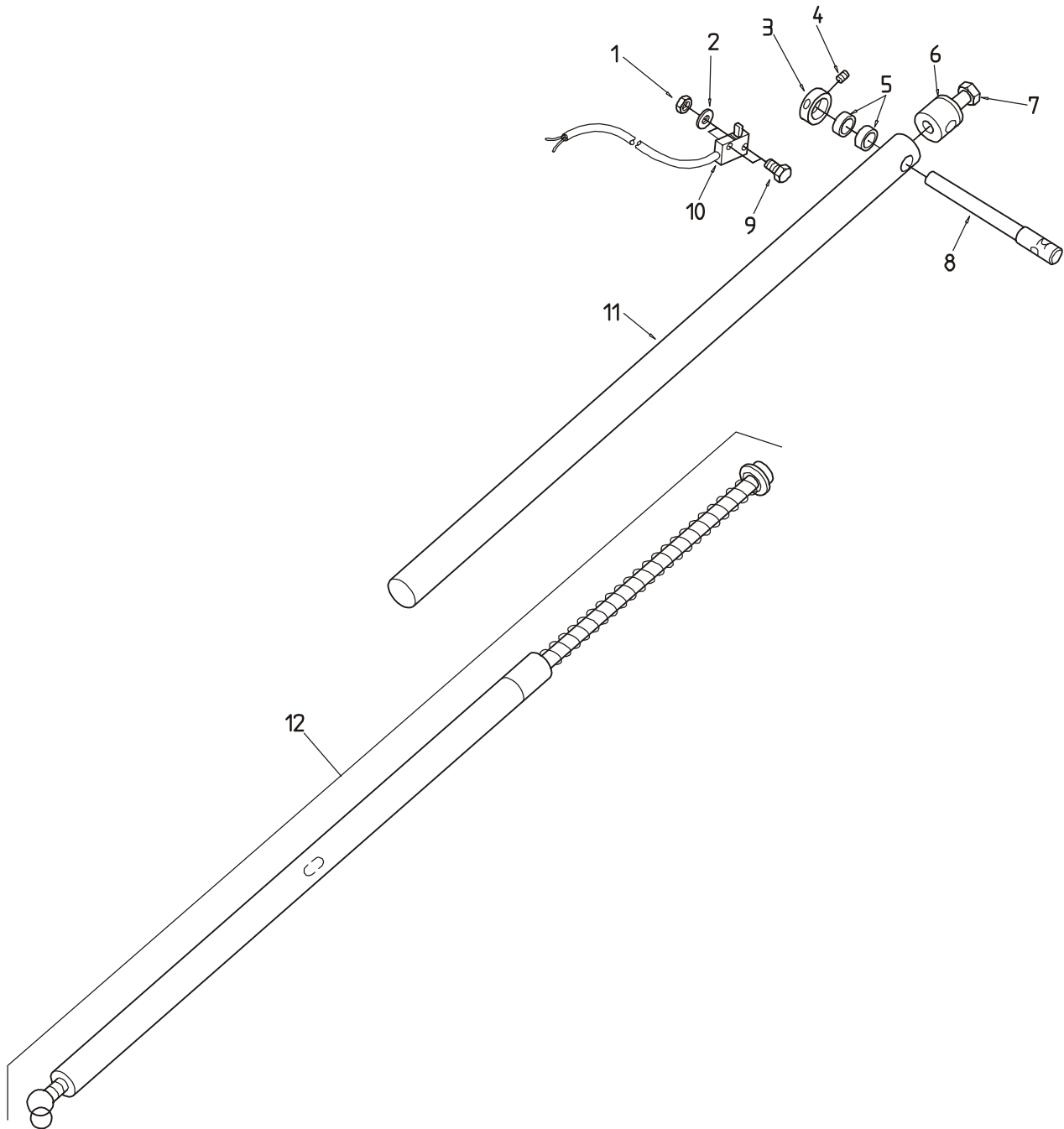
1465



178-c-April-05

09/2004

1464

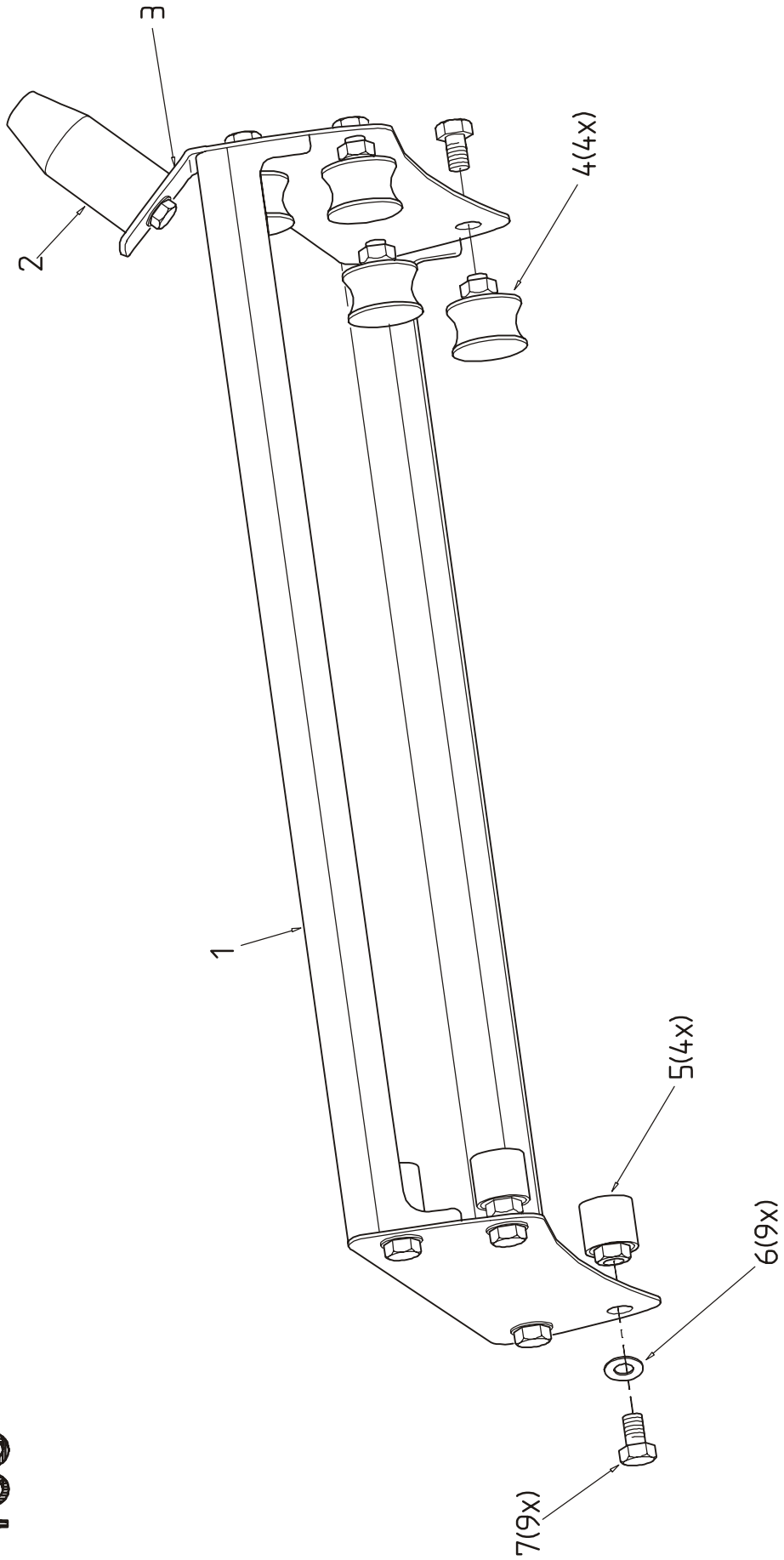


178-c-April-05

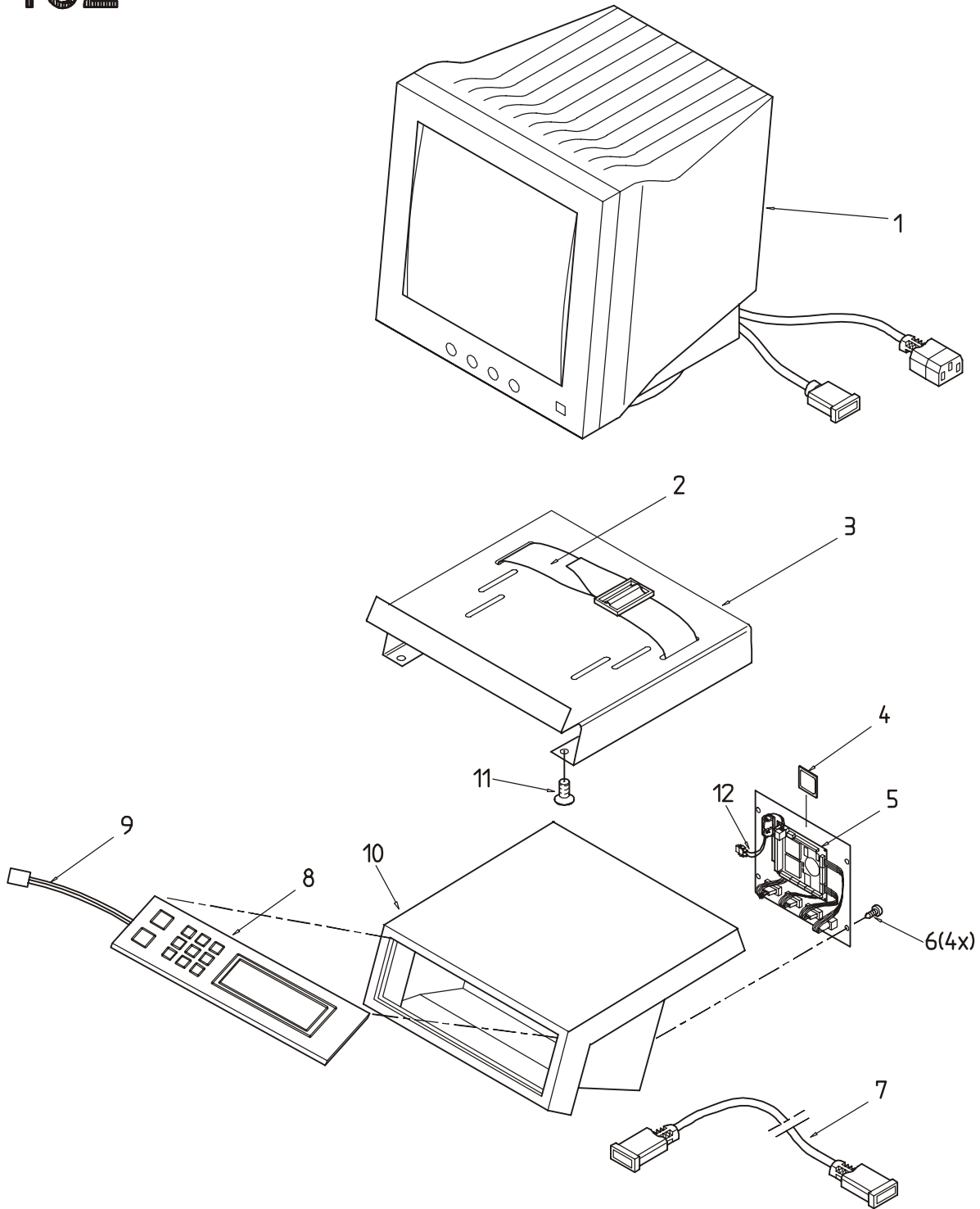
10/2004

1463

178-c-April-05

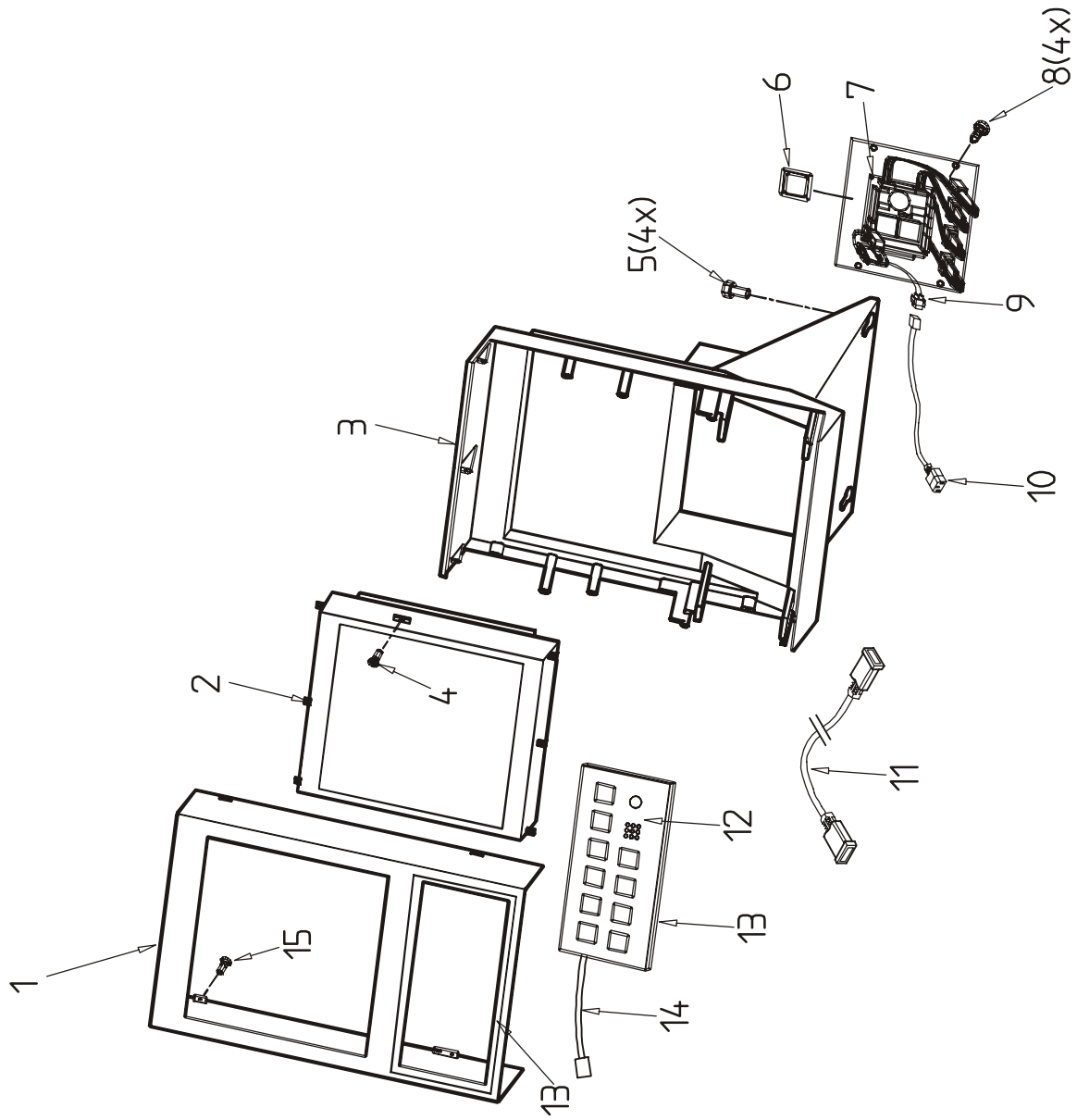


1462

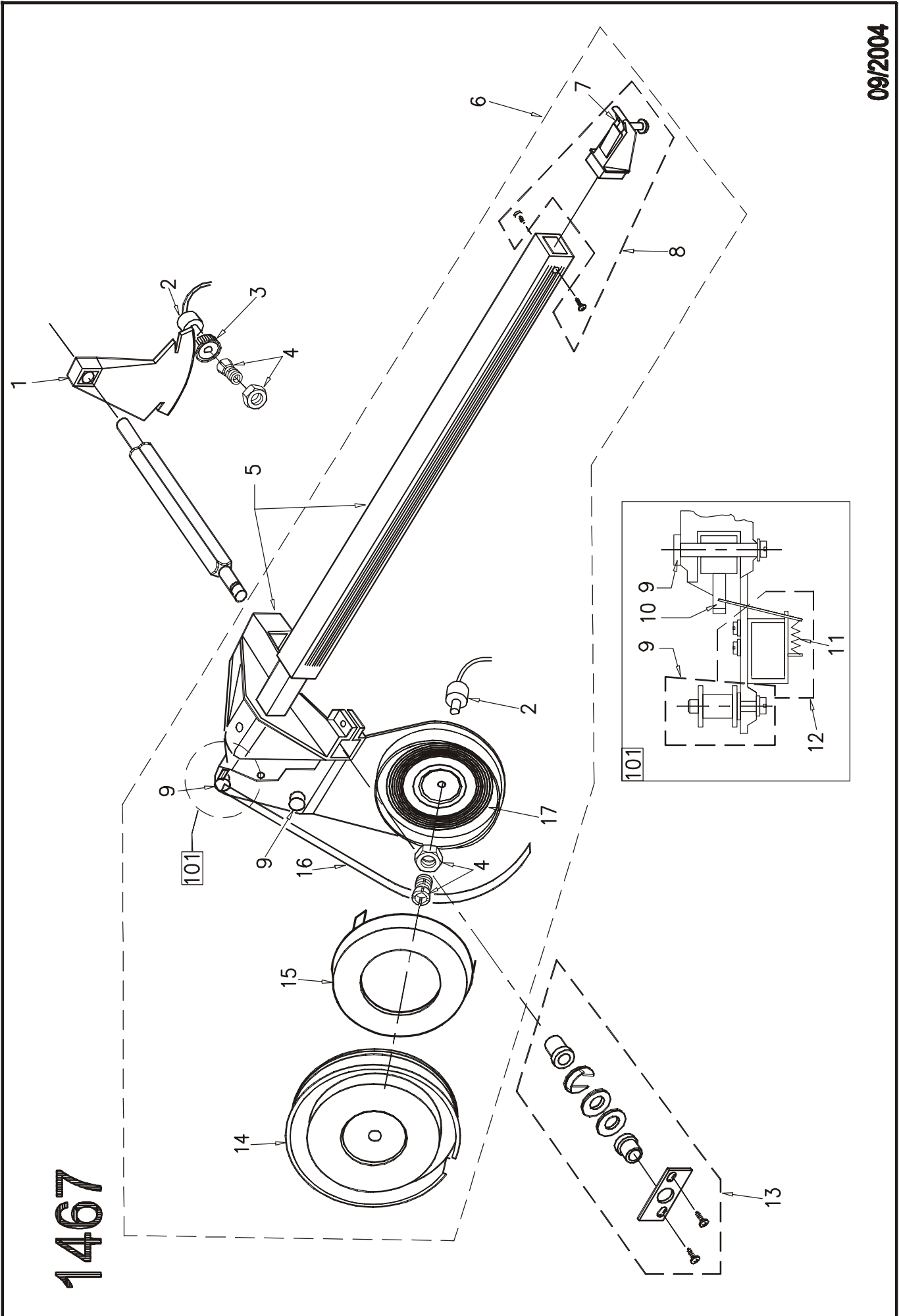


178-c-April-05

09/2004

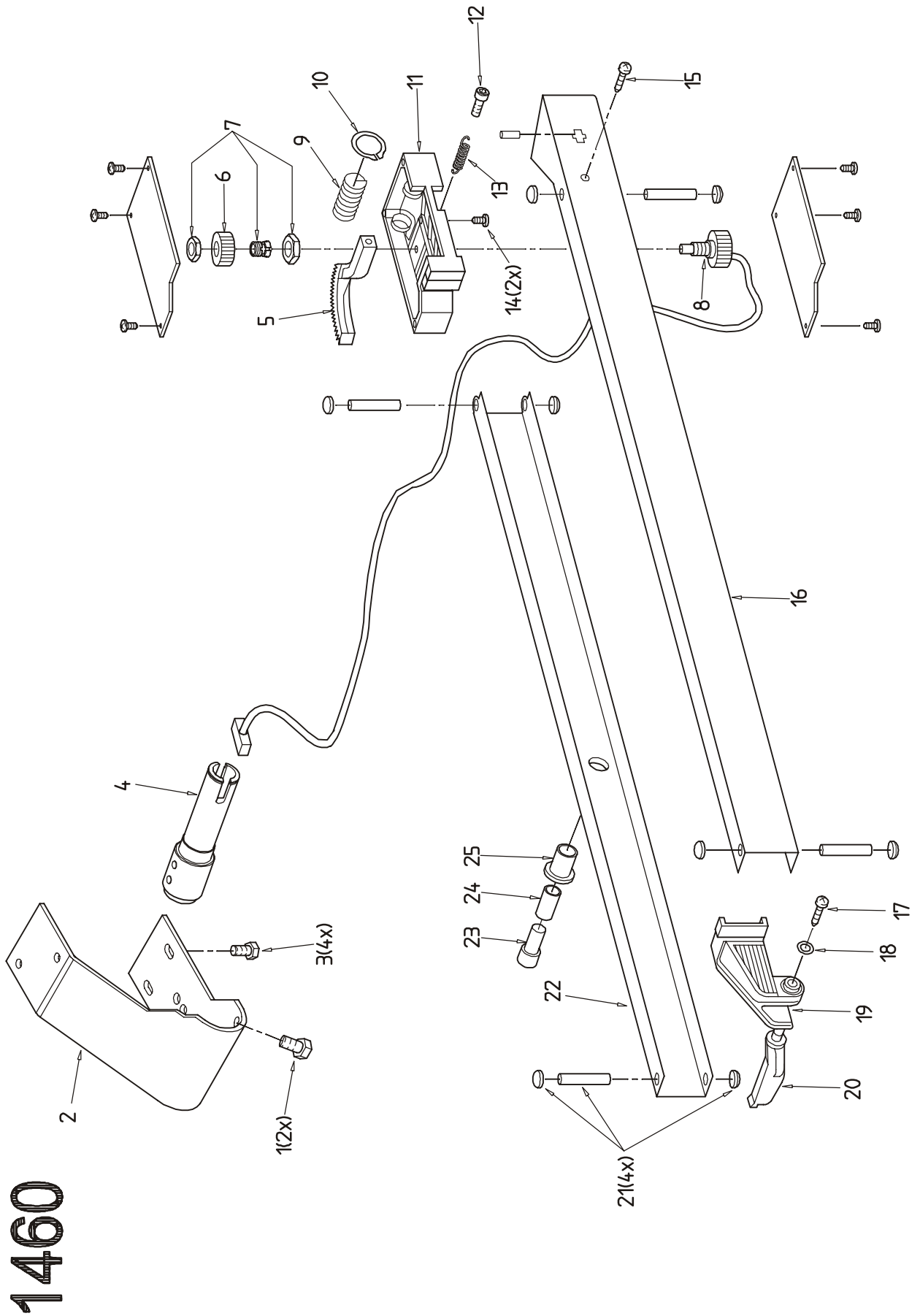


1461



1467

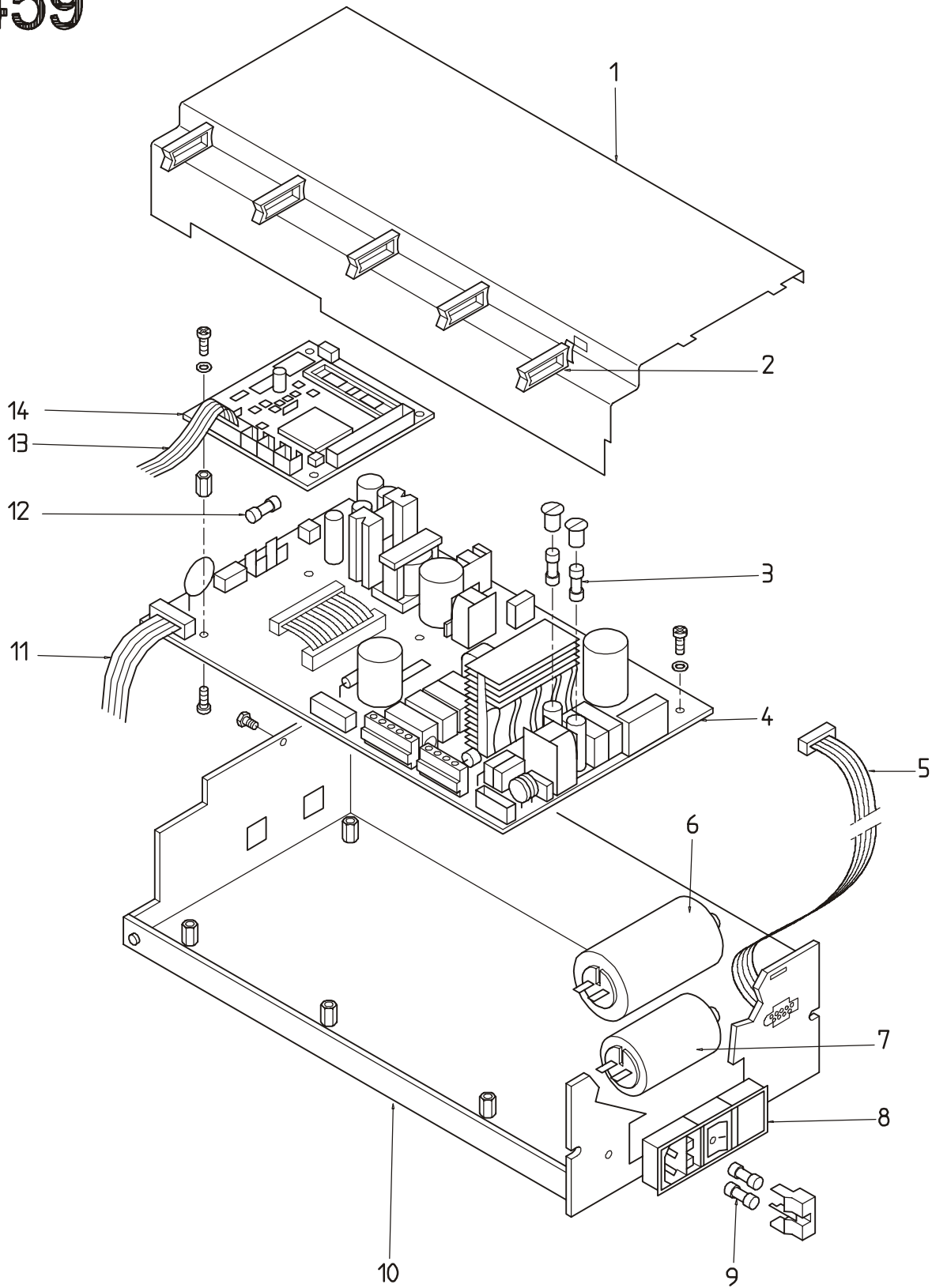
Fig.1460: Geodata width gauge arm



178-c-April-05

1460

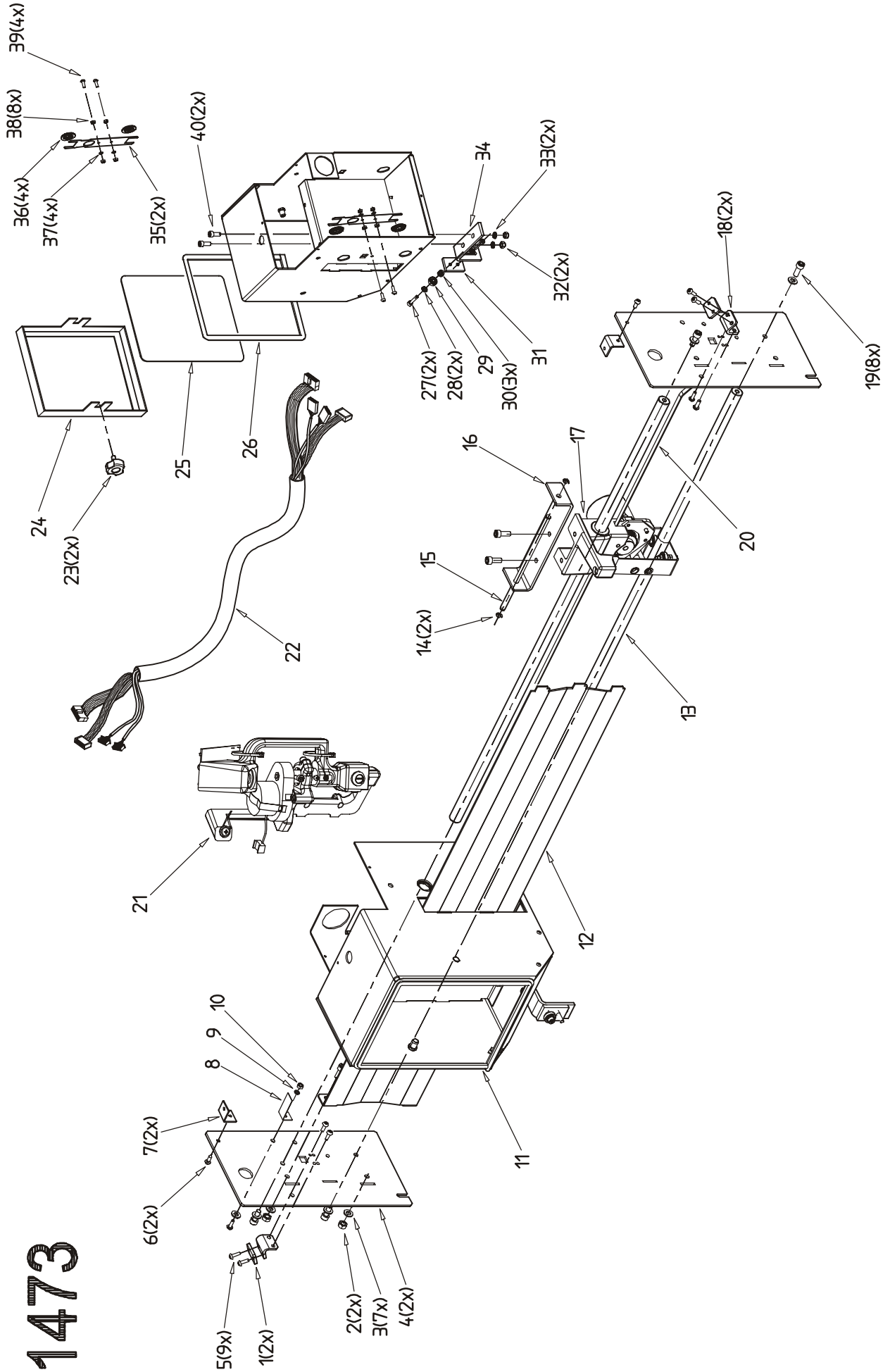
1459



178-c-April-05

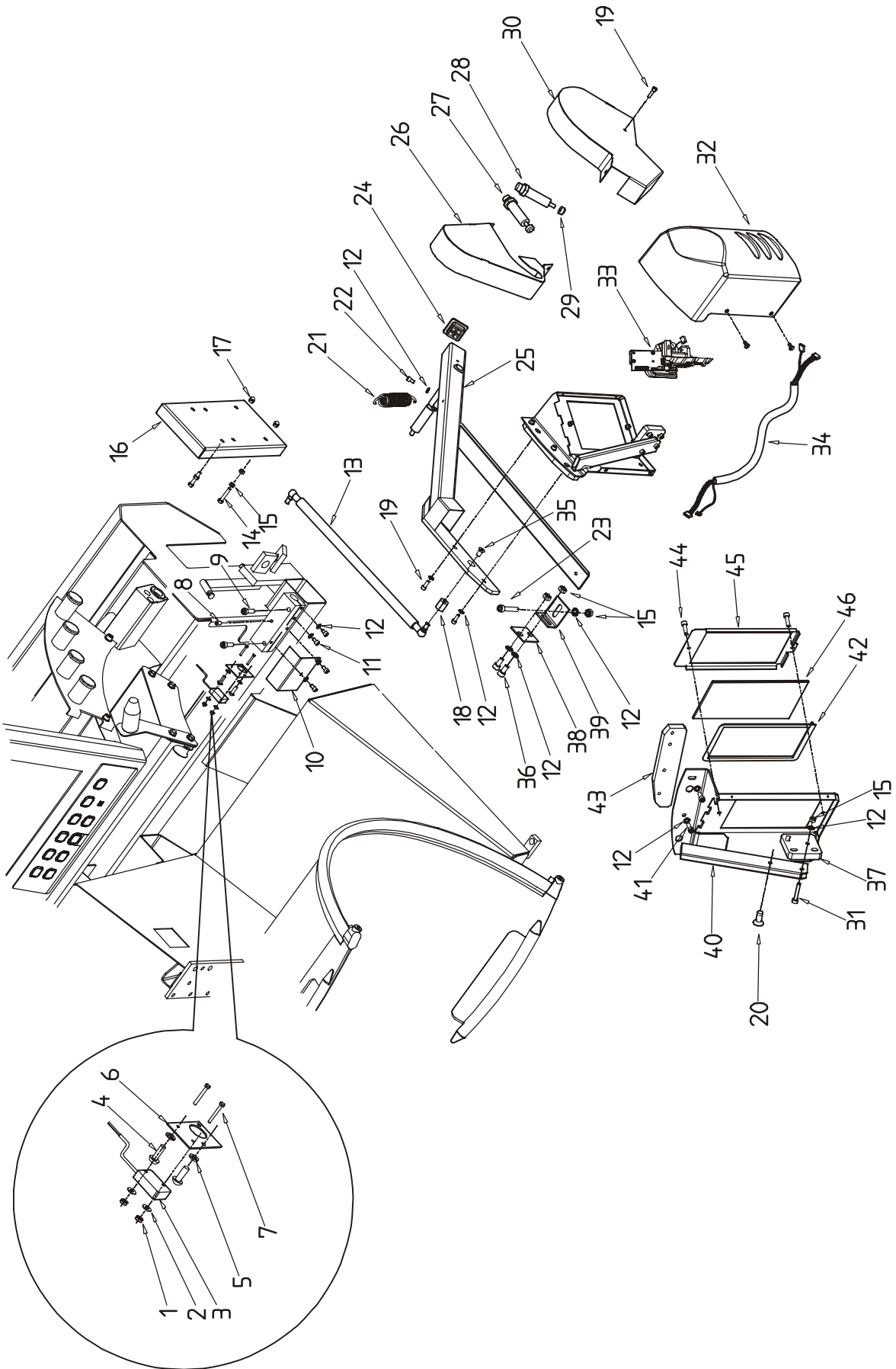
09/2004

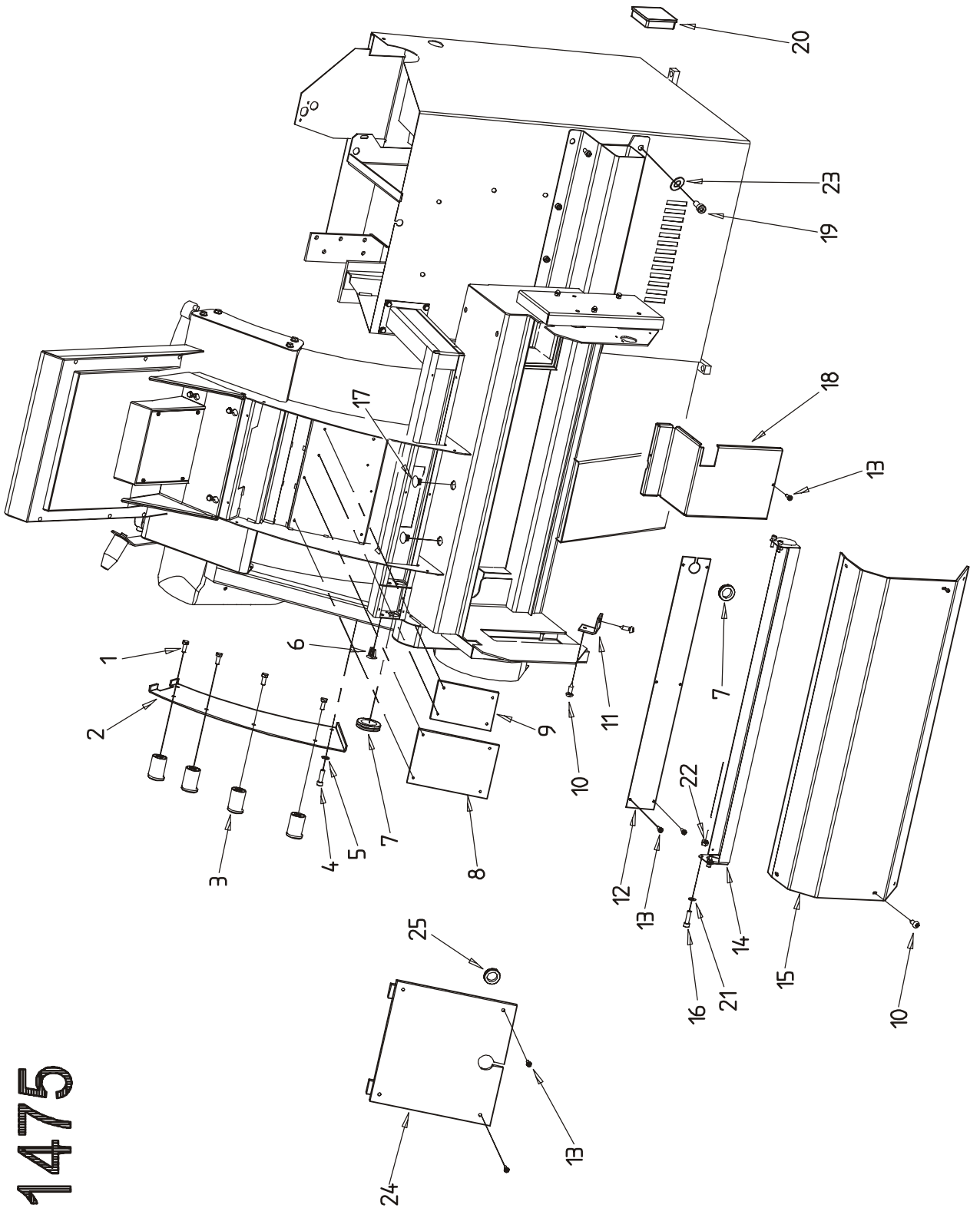
1473



09/2004

1474





1475

Fig.1459: Electronic unit

No.	Mat. no./Ref.	Designation	Note
1	EAA0266D11A	Electronic unit assembly	
2	EAS2025D02A	Cover of digital box	
2	2-08557A	Lead holder	
3	2-21151A	Fine-wire fuse, slow blow	3.5 A
4	EAP0201D10A	Power interface board	
5	EAW0239D13A	Ribbon cable controller board	
6	2-01529A	Capacitor	
7	2-01429A	Capacitor	
8	2-40348A	Power entry module	
9	2-21251A	Fine-wire fuse, slow blow	6.3 A
10	EAA0260D68A	Bottom of digital box	
11	EAW0239D03A	Connecting lead display and keyboard unit	
12	2-16951A	Fine-wire fuse, medium slow blow	1.25 A
13	EAW0239D00A	Connecting lead vibratory system	
14	EAP0201D00C	Controller board	

Fig.1460: Geodata width gauge arm

No.	Mat. no./Ref.	Designation	Note
1	EAA0283D13A	Geodata width gauge assembly	
1	1-07024A	Hexagon head screw	M6 x 10
2	EAS2025D72A	Holder, blue	
2	EAA0306D41A	Holder, black	
3	1-3724	Special tapping screw	M5 x 10
4	EAM0005D68A	Pivot	
5	EAC0058D31A	Tooth segment	
6	EAC0058D23A	Gear wheel for potentiometer	
7	2-07657A	Collet with nut	
8	EAA0266D24A	Potentiometer with lead and nut	
9	1-04167A	Leg spring	
10	1-4477	Circlip	Ø 24 x 1.2
11	EAC0058D30A	Joint head	
12	1-02905A	Screw	M5 x 12
13	1-04067A	Tension spring	
14	1-09326A	Special screw	4 x 12
15	1-1825	Self-tapping screw	B 4.2 x 9.5
16	EAS2025D34A	Outer plate, silver	
17	1-09326A	Screw for plastic material	
18	1-19341A	Washer	
19	EAC0058D32A	Gauge head assembly	
20	EAC0058D33A	Gauge finger	
21	EAA0328G24A	Bolt (1 set = 4 x)	
22	EAS2025D34A	Inner plate, silver	
23	1-16809A	Screw	M6 x 45
24	1-10862A	Hexagon nut	6.2 x 10.30
25	EAM0042G32A	Cap nut	M6x9x15,5

Fig. 1461: Monitor, Monitor support and Embedded PC – geodyna 6800 premium, optima

No.	Mat. no/Ref.	Designation	Note
1	EAA0283D36A	Frame assembly TFT	
2	3-01608A	TFT monitor	
3	EAC0058D43A	TFT monitor support	
4	1-10226A	Special screw	3 x 8
5	1-11026A	Hexagon bolt	M6 x 25
6	3-01009A	Flash board with data	
7	EAA0307G58A	Embedded PC without flash	
8	1-22623A	Tapping screw	3.9 x 13
9	EAW0239D24A	Power cord	
10	EAW0239D25A	Extension power cord	
11	6-02322A	Extension lead	1.8m
12	EAA0283D42A	Keyboard unit	
13	1-09484A	Adhesive closure (male)	
	1-09384A	Adhesive closure (female)	
14	EAW0239D16A	Connecting lead keyboard unit	
15	1-2025	Tapping screw	4.2x16

Fig. 1462: Monitor, Monitor support and Embedded PC – geodyna 6800, 6800p

No.	Mat. no/Ref.	Designation	Note
1	3-01408A	Monitor with lead	
2	1-09584A	Fastening means	
3	EAS2058D19A	Monitor support	
4	3-01009A	Flash board with data	
5	EAA0307G58A	Embedded PC without flash	
6	1-22623A	Tapping screw	3.9 x 13
7	6-02322A	Extension lead	
8	EAA0283D42A	Keyboard unit	
9	EAW0239D12A	Connecting lead	
10	EAC0058D48A	Display casing	
11	1-19923	Screw	6.3 x 19
12	EAW0239D12A	Power cord	

Fig. 1463: Wheel guard carrier

No.	Mat. no/Ref.	Designation	Note
1	EAA0307G75A	Wheel guard carrier assembly (before 11/04 was:EAA0277D80A)	
	EAA0313D99A	Wheel Guard Support	
2	EAM0005D69A	Cone	
3	EAS2025D40A	Angular support	
4	EAA0307G76A	Complete flat roller	
5	EAA0307G77A	Complete "U" roller	
6	1-10041	Washer	8.4
7	1-32401	Screw	M8 x 12

178-c-April-05

Fig. 1464: Wheel guard damper

No.	Mat. no./Ref.	Designation	Note
	EAA0283D21A	Wheel guard switch assembly	
1	1-11233	Nut	M3
2	1-9541	Washer	3.2
3	EAM0021D12A	Switch ring	
4	1-38910	Setscrew	M4 x 8
5	1-06065A	Bushing	
6	EAM0021D08A	Clamping sleeve	
7	1-16209	Screw	M6 x 12
8	EAM0021D11A	Arbor	
9	1-26901	Screw	M3 x 20
10	2-7261	Switch	
11	EAM0021D10A	Telescope pipe	
12	EAA0283D52A	Wheel guard damper	

Fig. 1465: Display geodyna 6300/p and wheel guard geodyna 6300/p, 6800/p

No.	Mat. no./Ref.	Designation	Note
1	EAW0239D16A	Connecting lead 6300/6800	
2	EAA0328G17A	LC display and key pad	
3	1-09484A	Adhesive closure (male)	
	1-09384A	Adhesive closure (female)	
4	EAC0058D47A	Display casing, blue, geodyna 6300	
	EAC0058D87A	Display casing, black, geodyna 6300	
	EAC0058D48A	Display casing, blue, geodyna 6800	
	EAC0058D88A	Display casing, black, geodyna 6800	
5		Wheel guard carrier assembly (see Fig. 9)	
6		Wheel guard switch assembly (see Fig. 8)	
7	1-46401A	Screw	M5 x 16
8	1-11441	Washer	5.3
9	1-18233A	Nut	M5
10	EAA0277D35A	Support of display unit	
11	1-15633A	Nut	M8
12	1-11741	Washer	8.4
13	EAA0277D86A	Wheel guard assembly	
14	8-09218A	End buffer	
15	EAC0058D26A	Wheel guard handle	
16	1-22723A	Self-tapping screw	2.9 x 9.5

Fig. 1466: Cabinet and weight box

No.	Mat. no/Ref.	Designation	Note
1	8-01250A	Wrench	SW 14
2	EAM0005D40A	Calibration weight	
3	1-22623A	Screw	3.9 x 13
4	EAS2058D06A	Angular support	
5	EAA0283D51A	Mirror with adhesive strip	
6	EAA0266D25A	Transformer with lead	
7	2-06730A	Reflector with integrated halogen lamp	
8	1-22723A	Self-tapping screw	2.9 x 9.5
9	EAS2025D18A	Lamp holder	
10	EAC0058D65A	Protective screen	
11	1-31406A	Screw	M6 x 10
12	EAC0058D55A	Cover of vibratory system	
13	1-16409	Screw	M6 x 20
14		Pedal assembly geodyna 6300, 6800	(see Fig. 4)
		Pedal assembly geodyna 6300p, 6800p, 6800 premium, 6800 optima	(see Fig. 5)
15	EAL0345D82A	Decal geodyna 6300	
	EAL0349G63A	Decal geodyna 6300p	
	EAL0345D83A	Decal geodyna 6800	
	EAL0345D48A	Decal geodyna 6800p	
	EAL0345D58A	Decal geodyna 6800 premium	
16	1-06476A	Cap	
17	EAL0345D49A	Decal VPM-Technology	
18	1-19923	Screw	6.3 x 19
19	EAC0058D41A	Weight box, blue	
	EAC0058D86A	Weight box, black	
20	1-22623A	Self tapping screw	3,9 x 13
21	EAW0240G27A	CCD Inner Camera Cable	
22	EAW0240G30A	Motor Cable for Inner Scanner	
23	EAA0307G13A	Inside Scanner Assembled Unit	
24	1-49810A	Screw	M6 x 25
25	1-1548	Washer-Lock	D.6
26	1-16309	Screw	M6 x 16
27	EAA0307G65A	Inside Scanner Housing Complete	
28	EAM0006G67A	Glass	
29	EAS2086G63A	Bottom Glass Bracket	
30	1-22623A	Self tapping screw	3,9 x 13

Fig. 1467: Geodata gauge for distance and rim diameter

No.	Mat. no/Ref.	Designation	Note
	EAA0277D85A	Geodata gauge arm assembly with fastening means	
1	EAC0058D56A	Tooth segment	
2	EAA0266D20A	Potentiometer assembly with nut	
3	EAC0058D13A	Gear wheel	
4	2-07657A	Collet with nut	
5	EAA0328G18A	Gauge arm assembly	
6	EAA0328G19A	Gauge assembly with gauge head	
7	EAS2058D04A	Clip	
8	EAA0328G20A	Gauge head assembly	
9	EAA0307G34A	Arbor assembly	
10	EAC0058D29A	Clamping piece	
11	1-05467A	Tension spring for solenoid	
12	EAA0307G33A	Solenoid with fastening means	
13	EAA0328G23A	Fastening means with bushings	
17	1-03967A	Helical spring	
14	EAC0058D06A	Belt pulley	
15	EAC0058D58A	Cover	
16	EAA0277D96A	Toothed belt	960 mm
17	1-03967A	Helical spring	

Fig. 1468: Pedal assembly – geodyna 6300p, 6800p, 6800 premium, optima

No.	Mat. no/Ref.	Designation	Note
	EAA0263G35A	Pedal "p-version" assembly, 2 micro switches	
1	EAS2020P20A	Pedal	
2	EAS2027G18A	Pedal holder	
3	1-1748	Tooth washer	
4	1-9904	Screw	M2 x 16
5	EAM0006G10A	Spacer	
6	2-07661A	Micro switch	
7	1-11033	Nut (Before 2004 only)	M2
8	1-1048	Tooth washer	2.2
9	1-9341	Washer	2.2
10	EAM0006G11A	Hexagon bar	
11	1-10033	Nut	M8
12	1-10041	Washer	8.4
13	1-06768A	Compression spring	
14	1-18209	Screw	M8 x 45
15	1-17609	Screw	M8 x 16
16	1-13409	Screw	M4 x 10

Fig. 1469: Pedal assembly – geodyna 6300, 6800

No.	Mat. no/Ref.	Designation	Note
	EAA0263G34A	Pedal "Standard" assembly, 1 micro switch	
1	EAS2020P20A	Pedal	
2	EAS2027G18A	Pedal holder	
3	1-1748	Tooth washer	
4	1-9904	Screw	M2 x 16
5	EAM0006G10A	Spacer	
6	2-07661A	Micro switch	
7	1-11033	Nut (Before 2004 only)	M2
8	1-1048	Tooth washer	2.2
9	1-9341	Washer	2.2
10	EAM0006G11A	Hexagon bar	
11	1-10033	Nut	M8
12	1-10041	Washer	8.4
13	1-06768A	Compression spring	
14	1-18209	Screw	M8 x 45
15	1-17609	Screw	M8 x 16
16	1-13409	Screw	M4 x 10

Fig. 1470: Power clamping device – geodyna 6300p, 6800p, 6800 premium, optima

No.	Mat. no/Ref.	Designation	Note
1	EAA0283D46A	Basic body of adaptor	
2	8-03850A	Wrench (width across flats 13 mm)	
3	1-46601A	Screw	M8 x 25
4	1-18241A	Washer	55x68x0.5
5	EAC0058D14A	Spring centring ring	
6	1-07768A	Compression spring	
7	EAS2025D14A	Spring casing	
8	1-13077	Circlip	
9	EAC0058D69A	Protective sleeve	
10	EAM0005D54A	Clamping sleeve	
11	EAC0058D08A	Pressure ring	
12	EAC0058D07A	Clamping head	
13	EAC0058D15A	Protective ring	
14	EAM0005D25A	Cone 96 – 116 mm	
15	EAM0005D24A	Cone 74 – 99 mm	
16	EAM0005D23A	Cone 42 – 77 mm	
17	EAC0058D68A	Spacer ring	

Fig. 1471: Vibratory system with drive unit – geodyna 6300p, 6800p, 6800 premium, optima

No.	Mat. no./Ref.	Designation	Note
	EAA0260D18A	Vibratory system of "p" balancers	
	EAA0306D97A	Vibratory system "p" optima	
1	1-9641	Washer	A4,3
2	1-13004	Oval head screw	M4 x 6
3	EAP0201D50A	Opto-electronic unit	
4	EAS2025D12A	Clip	
5	EAW0239D00A	Lead with temperature sensor	
6	EAM0005D57A	Bayonet disc	
7	EAM0021D31A	Yoke	
8	EAM0021D32A	Clamp	
9	1-09784A	Inner ring	LR25x30x38.5
10	1-14977A	SW25 Circlip	23.5x1.75x1.2
11	EAM0021D30A	Cylindrical pin	10m6 x 24
12	EAM0021D51A	Compression spring	1.1x7.4x41.5
13	EAA0307G37A	Fastening means of bayonet disc	
14	EAA0328G16A	Fastening means for transducer	
15	1-17709	Hex. socket head cap screw	M8 x 20
16	EAS2025D03A	Spacer for vibratory system	
17	EAA0260D59A	Transducer assembly	
18	EAA0277D98A	Vibratory system of "p" balancers without drive unit and transducers	
	EAA0277D98A	VS "p" optima balancers without drive unit and transducers	
19	1-09684A	Parallel key	A6x6x40
20	EAM0021D17A	Intermediate clip	40 x 9
21	EAA0283D86A	Brake disc repair kit	
22	EAK0257G05A	Spacer plates for brake (set)	
23	EAM0005D64A	Code bar	
24	EAM0021D18A	Drive pulley "p"	
25	1-03063A	Angular contact ball bearing	
26	1-15077A	Circlip	
27	1-48710A	Setscrew	M5 x 8
28	EAM0021D19A	Pressure ring "p"	
29	EAM0005D08A	Motor pulley	
30	1-28410	Setscrew	M6 x 8
31	EAA0266D31A	Motor	WS 120W
32	EAM0005D44A	Spacer for motor	
33	1-05747A	Tooth washer	J4
34	EAP0201D20A	Encoder board assembly	
35	1-13004	Oval head screw	M4 x 6
36	EAA0307G36A	Replacement kit "p" – die-cast nut	
37	1-11541	Washer	B6.4
38	1-30701	Hexagon bolt	M6 x 12

Fig. 1472: Vibratory system with drive unit – geodyna 6300, 6800

No.	Mat. no./Ref.	Designation	Note
	EAA0260D05A	Vibratory system assembly	
1	1-9641	Washer	4.3
2	1-13004	Oval head screw	M4 x 6
3	EAP0201D50A	Opto-electronic unit	
4	EAS2025D12A	Clip	
5	EAW0239D00A	Lead with temperature sensor	
6	EAA0328G16A	Fastening means for transducer	
7	1-17709	Hex. socket head cap screw	M8 x 20
8	EAS2025D03A	Spacer for vibratory system	
9	EAA0260D59A	Transducer assembly	
10	EAM0005D43A	Spacer for motor	
11	EAM0005D12A	Drive pulley	
12	1-16841	Washer	8.4
13	1-32901	Hexagon bolt	M8 x 35
14	8-3531	Belt	5PJ711
15	1-28410	Setscrew	M6 x 8
16	1-11104	Screw	M3 x 8
17	EAA0266D31A	Motor	WS 120W
18	EAA0260D79A	Solenoid brake assembly	
19	1-11541	Washer	B6,4
20	1-30701	Hexagon bolt	M6 x 12

Fig. 1473: Rear scan unit – optima

No.	Mat. no/Ref.	Designation	Note
1	EAA0255J52A	Rear liner drive assembly	
2	EAM0003J52A	Stop belt	
3	1-11633A	Nut	M6
4	1-9841	Washer	6,4
5	EAS2081J16A	Support rod	
6	1-13304A	Screw	M4x12
7	1-20423	Self tapping screw	4,2x13
8	EAS208J11A	Rear cover support	
9	EAS2081J10A	Home position end stroke	
10	1-2546A	Washer spring single coil D.4	4.3
11	1-11433A	Nut	M4
12	EAA0255J53A	Linear drive box assembly with wipers	
13	EAS2081J14A	Cover	
14	EAM0003J41A	Rod	16mm
15	1-16977A	Retaining ring	D.5x0,7
16	EAM0003J55A	Support rod	
17	EAS2021J85A	Bracket	
18	EAA0307G40A	Drive assembly linear	
19	EAM0003J51A	Belt support	
20	1-16309	Screw	M6x16
21	8-04331A	Belt	
22	EAA0307G16A	Scanner assembled unit	
23	EAW0240G39A	Wiring harness rear scanner	
24	8-11330A	Knob	M6
25	EAS2021J84A	Rear scanner cover-glass	
26	1-11784A	Glass	
27	5-03241A	Adhesive seal	
28	1-15209	Screw	M5x25
29	1-1448	Tooth washer	D.5 E
30	1-03963A	Bearing	5x16x5
31	1-9741	Washer	5,3
32	EAS2021J92A	Ball bearing block adjuster	
33	1-9933	Nut	M6
34	1-1548	Tooth washer	D.6 E
35	EAS2021J91A	Support box guide	
36	EAS2081J20A	Wipers holder	
37	8-08914A	Wipers rod	16mm
38	1-2546A	Washer spring single coil D.4	4.3
39	1-11433A	Nut	M4
40	1-13304A	Screw	M4x12
41	1-16309	Screw	M6x16

Fig. 1474: External scan unit – optima

No.	Mat. no/Ref.	Designation	Note
1	1-19233A	Self locking nut	M3
2	1-9541	Washer	4,3
3	2-7261	Micro switch	
4	1-13304A	Screw	M4x12
5	1-9541	Washer	D.3
6	EAS2086G48A	Micro switch support	
7	1-26901	Screw	M3x20
8	1-22210A	Screw	M8x16
9	1-17909	Screw	M8X30
10	EAS2076G45A	Microswitch cover	
11	1-47909A	Screw	M6x10
12	1-1548	Tooth washer	D.6
13	EAA0307G61A	Articulated joint tube	
14	1-16809A1	Screw	M6x40
15	1-11633A	Nut	M6
16	EAS2086G47A	Cover	
17	1-3035	Nut	M6
18	EAM0042G06A	Tube Spacer	
19	1-16409	Screw	M6x20
20	1-16609A	Screw	M6x30
21	EAM0006G06A	Spring	
22	1-47909A	Screw	M6x10
23	1-16509A1	Screw	M6x25
24	1-08876A	Cap	
25	EAS2086G03A	Scanner support	
26	EAS2086G35A	Inner cover	
27	1-04969A	Shock absorber with nut	
28	1-04869A	Shock absorber with Nut	M20
29	1-05069A	Cap for shock absorber	PP225
30	EAS2086G39A	External cover	
31	1-16709	Screw	M6x35
32	EAC0060G50A	Cover for external laser	
33	EAA0307G16A	Scanner assembled unit	
34	EAW0240G38A	Wiring harness outer scanner	
35	1-23403A	Screw	M8x12
36	1-16209A1	Screw	M6x12
37	EAM0003J40A	Lower block for scanner	
38	EAS2086G53A	Inf. support scanner	
39	EAS2086G51A	Inf. support tube	
40	EAS2021J75A	Support wldmt external scanner	
41	1-16309	Screw	M6x16
42	5-03241A	Adhesive seal	
43	EAM0003J56A	Upper block for scanner	
44	1-13709	Screw	M4x20
45	EAS2021J79A	Glass support	
46	1-11784A	Glass	

Fig. 1475: Rear covers and Electronic boards – optima

No.	Mat. no/Ref.	Designation	Note
1	1-32601	Screw	M8x20
2	EAS2086G54A	Cone support	
3	EAC0058D54A	Conical bolt	
4	1-17909	Screw	M8x30
5	1-17741	Washer	8,4
6	8-08176A	Cap	9,5>13,5
7	8-08716A	Grommet	32mm
8	EAP0204G50A	Camera Processor Board	
9	2-37666A	10V Power Supply	
10	1-20423	Self tapping screw	4,2x13
11	EAS2081J11A	Rear Cover Support	
12	EAA0313D24A	Channel cover	
13	1-22623A	Self tapping screw	3,9x13
14	EAS2021J86A	Cable Support	
15	EAC0060G51A	Rear device Cover	
16	1-16409	Screw	M6x20
17	1-09076A	Cap	14>21
18	EAS2086G32A	Cover for rear scanner	
19	1-17709	Screw	M8x20
20	1-08976A	Cap	80x80
21	1-1548	Washer-Lock	6
22	1-11633A	Nut	M6
23	1-17841	Washer	8x24
24	EAA0313D23A	Back side cover	
25	8-08916A	Snap Bushing	25.5 mm

UPDATING GUIDE

MODIFIED / CHANGED PARTS Regarding Revision A of October 2004

List of updated or new tables from this revision:
Fig. Number been replaced with Tables number

1	2	3	4	5	6	7	8
1472	1471	1470	1469	1468	1466	1465	1464
9	10	11	12	13	14	=	=
1463	1462	1461	1467	1460	1459	1473	1474
=							
1475							

All HWT part numbers has been replaced with Snap-on P/N.
H. geodyna optima parts has been added from this revision.
Spare Parts documentation P/N has been changed from HWT (9422 172) to Snap-on (TEEWB716A2).

MODIFIED / CHANGED PARTS Regarding Revision B of February 2005

No tables modified from this revision.
Code Numbers correction in the list:

List of Fig. 1460 geodata width gauge arm

In Position 2	EAA0303D41	is replaced with	EAA0306D41A
In Position 21	EAA0328G18A	is replaced with	EAA0328G24A
In Position 22	EAS2025D24A	is replaced with	EAS2025D34A

List of Fig. 1463 Wheel guard carrier

Nr.	EAA0277D80A	is replaced with	EAA0307G75A
-----	-------------	------------------	-------------

List of Fig. 1466 Cabinet and weight box

In Position 15	EAL0345D49A	is replaced with	EAL0345D48A
----------------	-------------	------------------	-------------

List of Fig. 1468 Pedal Assembly

In Position 3	1-9904	is replaced with	1-1748
---------------	--------	------------------	--------

List of Fig. 1469 Pedal assy

In Position 3	1-9904	is replaced with	1-1748
---------------	--------	------------------	--------

List of Fig. 1470 Power clamping device

In Position 5	EAG0058D14A	is replaced with	EAC0058D14A
---------------	-------------	------------------	-------------

List of Fig. 1471 Vibratory system with drive unit

In Position 8	EAM0021D31A	is replaced with	EAM0021D31A
In Position 21	EAA0307G35A	is replaced with	EAA0283D86A

MODIFIED / CHANGED PARTS Regarding Revision C of April 2005

No tables modified from this revision. Code Numbers only correction in the list:

List of Fig. 1471 Vibratory system with drive unit

In Position 3	EAA0260D09A	is replaced with	EAP0201D50A
---------------	-------------	------------------	-------------

List of Fig. 1472 Power clamping device

In Position 3	EAA0260D09A	is replaced with	EAP0201D50A
---------------	-------------	------------------	-------------

178-c-April-05

