

HOFMANN



EEWB731A

All information contained or disclosed in this document is considered confidential and proprietary by Snap-on Equipment. All manufacturing, use, reproduction, and sales rights are reserved by Snap-on Tools Company and the information contained herein shall not be used in whole or in part without the express written consent of Snap-on Equipment.

Table of Contents

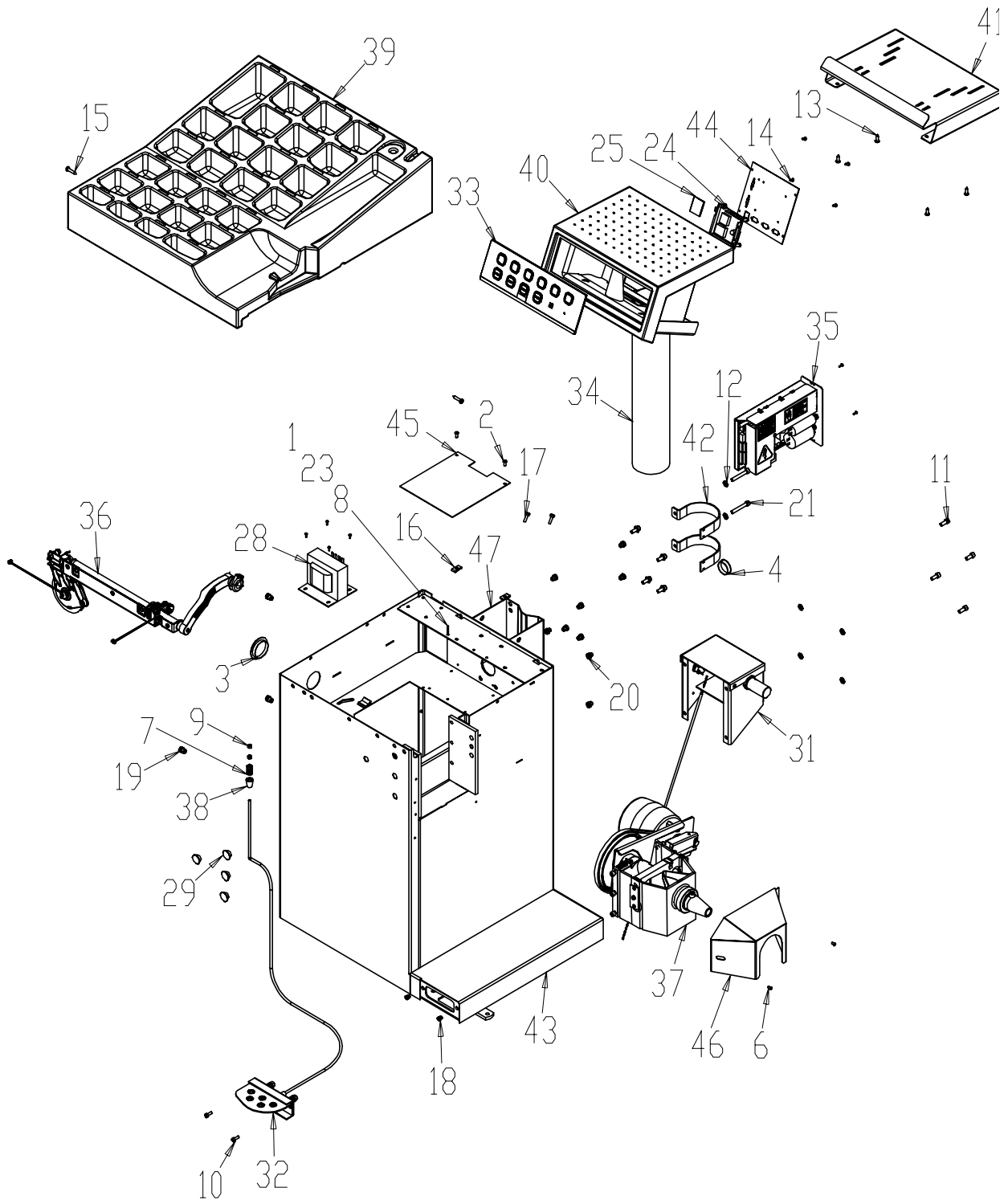
EEWB731P.....	2
EEWB731A.....	3
BALANCER ASSEMBLY	4
2D SAPE ASSEMBLY	6
VIBRATORY ASSEMBLY (POWER CLAMP)	8
CONES AND ACCESSORIES.....	9

EEWB731P

SYM	REQD	PART NO	DESCRIPTION
1	1	00111243000	LABEL-WARNING EXPLOS.
2	3	1-01215A	SCREW-LAG, 5/16 X 1/5
3	2	1-04076A	HOLE PLUG - 1.5" BLACK
4	1	1-1101	SCREW-HHCS, 3/8 -16 X 2
5	3	1-2541	WASHER-FLAT, 5/16
6	1	1-8133	NUT-KEPS 3/8 - 16
7	6	2-3657	CABLE CLAMP (FLAT)
8	1	2800051	WHEELGUARD - HOFMANN
9	1	3-01908A	MONITOR-15" FLAT SCREEN
10	1	5-12926A	STRAP-NYLON .77 X 24 3955T337
11	1	58839	WEIGHT TOOLS
12	0.08	63096-1	TRIM-FLEXIBLE
13	1	8-40660A	CARTON - OPTIMA
14	1	8-41360A	SKID-BFH 800B
15	1	EAA0247G21A	CALIPER-RIM WIDTH
16	1	EAA0283D05A	SAPE-SILVER
17	1	EAA0307G54A	ACCESSORY KIT - POWER CLAMP
18	1	EAA0346J38A	ASSY - BALANCER HNA 9300P
19	4	EAC0060G02A	FLANGE-COVER, ACC HOOK
20	1	EAL0307L00A	LABEL-UL
21	1	EAL0341J07A	LABEL-WARNING
22	1	EAL0341J08A	LABEL-WARNING, SAFETY GOGGLES
23	1	EAL0341J09A	LABEL-WARNING, MOVING COMP
24	1	EAL0341J44A	LABEL - ATTENTION, MAX WEIGHT
25	1	EAL0341J60A	LABEL- PATENT, WHEEL BALANCER
26	1	EAL0341J73A	DECAL - CAUTION WATER HAZARD
27	1	EAL0341J84A	DECAL - GEODYNA 9300P
28	1	EAL0343J76A	LABEL - ELEC/SERIAL
29	1	EAL0349G93A	LABEL-RAEE
30	1	EAM0005D40A	CALIBRATION WEIGHT
31	4	EAM0006G01A	HOOK-ACCESSORY STORAGE
32	1	EAM0050J00A	TUBE ASSY-WHEELGUARD 44 HNA
33	1	EAX0039J00A	CORD-POWER, 115V
34	1	EEHT300A	REMOVER-WHEEL WEIGHT
35	1	PAK306330	CARTON-SMALL ADAPTER KIT
36	1	ZEEWB731A9	LIT PACK-GEODYNA 9300
37	1	EAM0005D23A	CONE
38	1	EAM0005D24A	CONE
39	1	EAM0005D25A	CONE

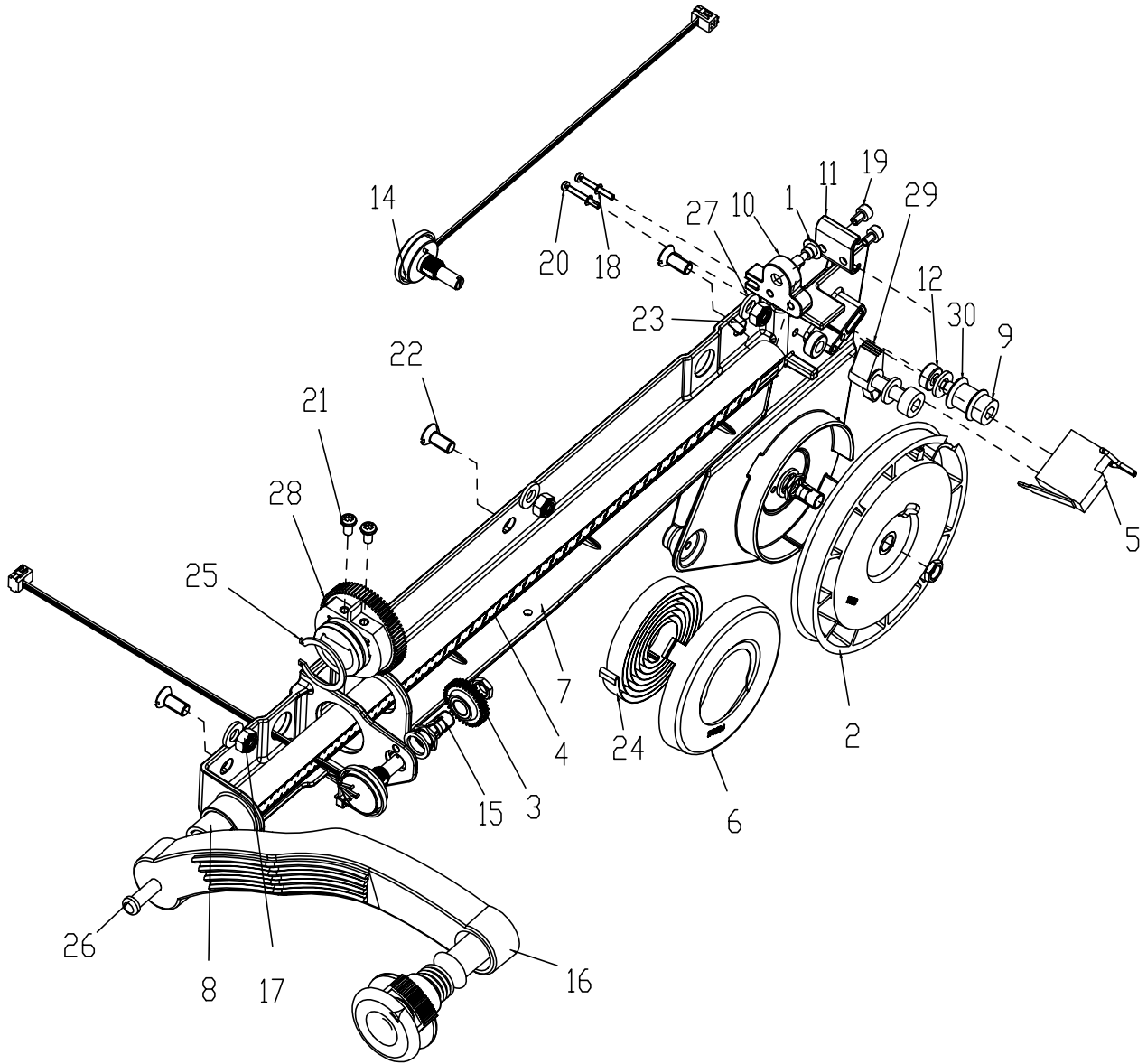
SYM	REQD	PART NO	DESCRIPTION
1	1	00111243000	LABEL-WARNING EXPLOS.
2	3	1-01215A	SCREW-LAG, 5/16 X 1/5
3	2	1-04076A	HOLE PLUG - 1.5" BLACK
4	1	1-1101	SCREW-HHCS, 3/8 -16 X 2
5	3	1-2541	WASHER-FLAT, 5/16
6	1	1-8133	NUT-KEPS 3/8 - 16
7	6	2-3657	CABLE CLAMP (FLAT)
8	1	2800051	WHEELGUARD - HOFMANN
9	1	3-01908A	MONITOR-15" FLAT SCREEN
10	1	5-12926A	STRAP-NYLON .77 X 24 3955T337
11	1	58839	WEIGHT TOOLS
12	0.08	63096-1	TRIM-FLEXIBLE
13	1	8-40660A	CARTON - OPTIMA
14	1	8-41360A	SKID-BFH 800B
15	1	EAA0247G21A	CALIPER-RIM WIDTH
16	1	EAA0283D05A	SAPE-SILVER
17	1	EAA0283D19A	ADAPTER KIT
18	1	EAA0346J37A	ASSY - BALANCER HNA 9300
19	4	EAC0060G02A	FLANGE-COVER, ACC HOOK
20	1	EAL0307L00A	LABEL-UL
21	1	EAL0341J07A	LABEL-WARNING
22	1	EAL0341J08A	LABEL-WARNING, SAFETY GOGGLES
23	1	EAL0341J09A	LABEL-WARNING, MOVING COMP
24	1	EAL0341J44A	LABEL - ATTENTION, MAX WEIGHT
25	1	EAL0341J60A	LABEL- PATENT, WHEEL BALANCER
26	1	EAL0341J73A	DECAL - CAUTION WATER HAZARD
27	1	EAL0341J83A	DECAL - GEODYNA 9300
28	1	EAL0343J76A	LABEL - ELEC/SERIAL
29	1	EAL0349G93A	LABEL-RAEE
30	1	EAM0005D40A	CALIBRATION WEIGHT
31	4	EAM0006G01A	HOOK-ACCESSORY STORAGE
32	1	EAM0050J00A	TUBE ASSY-WHEELGUARD 44 HNA
33	1	EAX0039J00A	CORD-POWER, 115V
34	1	EEHT300A	REMOVER-WHEEL WEIGHT
35	1	PAK306330	CARTON-SMALL ADAPTER KIT
36	1	ZEEWB731A9	LIT PACK-GEODYNA 9300

BALANCER ASSEMBLY
EAA0346J07A



SYM	REQD	PART NO	DESCRIPTION
1	1	1-1548	WASHER-EXT,SHAKEPROOF 6MM
2	2	1-2509	SCREW-BHCS, 1/4 - 20 X 5/8
3	1	1-2676	PLUG-HOLE, 2"DIA
4	1	1-3176	PLUG,1.50DIA.
5	6	1-3724	SCREW-SELF TAP,5 X 10MM
6	2	1-3924	SCREW-PHMS, M4.8 X 8MM SELF TAP
7	1	1-6668	COMPRESSION SPRING
8	1	1-7558	POP RIVET-3/16"
9	2	1-11633	NUT-M6 X 5,2MMTHK, BLK
10	2	1-16309	SCREW - SHCS, M6 X 16MM,
11	8	1-17709	SCREW - SHCS M8 X 20MM
12	10	1-17741	WASHER, 8MM DIN125A
13	4	1-19923	SCREW,S/T.PAN,5.5 X 15MM BLK.
14	4	1-20423	SCREW, SELF TAPPING M4.2 X 13MM
15	2	1-03725A	SCREW-PH SELF TAP M6.3X32 PHIL
16	2	1-07439A	NUT - SPEED, "U" TYPE,
17	4	1-11326A	SCREW - TFS M6SF-TT M6X20
18	2	1-17559A	NUTSERT - M6
19	4	1-17659A	NUTSERT - M10
20	10	1-18359A	NUTSERT, M8
21	2	1-53809A	SCREW HEX SOCKET M8X55
22	3	2-3657	CABLE CLAMP- FLAT CABLE
23	1	2-23201	TERMINAL LUG-6.3MM X .8MM POP RIVET
24	1	3-01509A	EMBEDDED PC ASSY - 64 RAM
25	1	3-45226AD1	MEMORY CARD - PROGRAMMED, BFH 1000
26	1	5-06745A	WRAP - SPLIT HARNESS
27	1	6-02322A	CABLE-EXTENTION SERIAL
28	1	7-16201A	TRANSFORMER- 500VA AUTOMATIC
29	4	8-7216	PLUG-HOLE, 16MM DIA
30	1	8-09619A	STRAIN RELIEF - FLAT CABLE
31	1	EAA0255J72A	BACKPACK ASSEMBLY- GEODYNA 2600/2800
32	1	EAA0263G07A	ASSY-BRAKE PEDAL
33	1	EAA0307G67A	KEYPAD GEO 6800/4800
34	1	EAA0313D88A	MONITOR CARRIER
35	1	EAA0338G83B	ASSY - IBP DIGITAL BOX
36	1	EAA0338G92A	STAND. M1 SAPE 1D-2D A.S.S ASSY
37	1	EAA0344G01A	V.S. MOT. TAPERED MEC.BRAKE
	1	EAA0344G06A	VIBRATORY - POWER CLAMP
38	1	EAC0053J15A	BRAKE SPACER
39	1	EAC0058D42A	WEIGHT TRAY HNA
40	1	EAC0058D88A	DISPLAY HOUSING RAL 9005
41	1	EAS2058D94A	SUPPORT FOR MONITOR - RAL9005 BLACK
42	2	EAS2067G29A	MONITOR TOWER CLAMPING HOOK
43	1	EAS2081J98A	CABINET - M1 BLUE SPRAYED
44	1	EAS2086G67A	SUPPORT PLATE
45	1	EAS2103J17A	SHEET - FIRESHIELD
46	1	EAS2103J22A	COVER - VIBRATORY, HNA 9600P
47	1	EAS2103J31A	BRACKET - CRT TOWER HNA
48	1	EAW0233J04A	CABLE - JBC DISPLAY
49	1	EAW0233J07A	HARNESS-WIRING, TRANSFORMER
50	1	EAW0239D19A	EXTENSION WIRE 3D-SAPE
51	1	EAW0240G48A	PWR CONN. ASSY - EMBEDDED PC

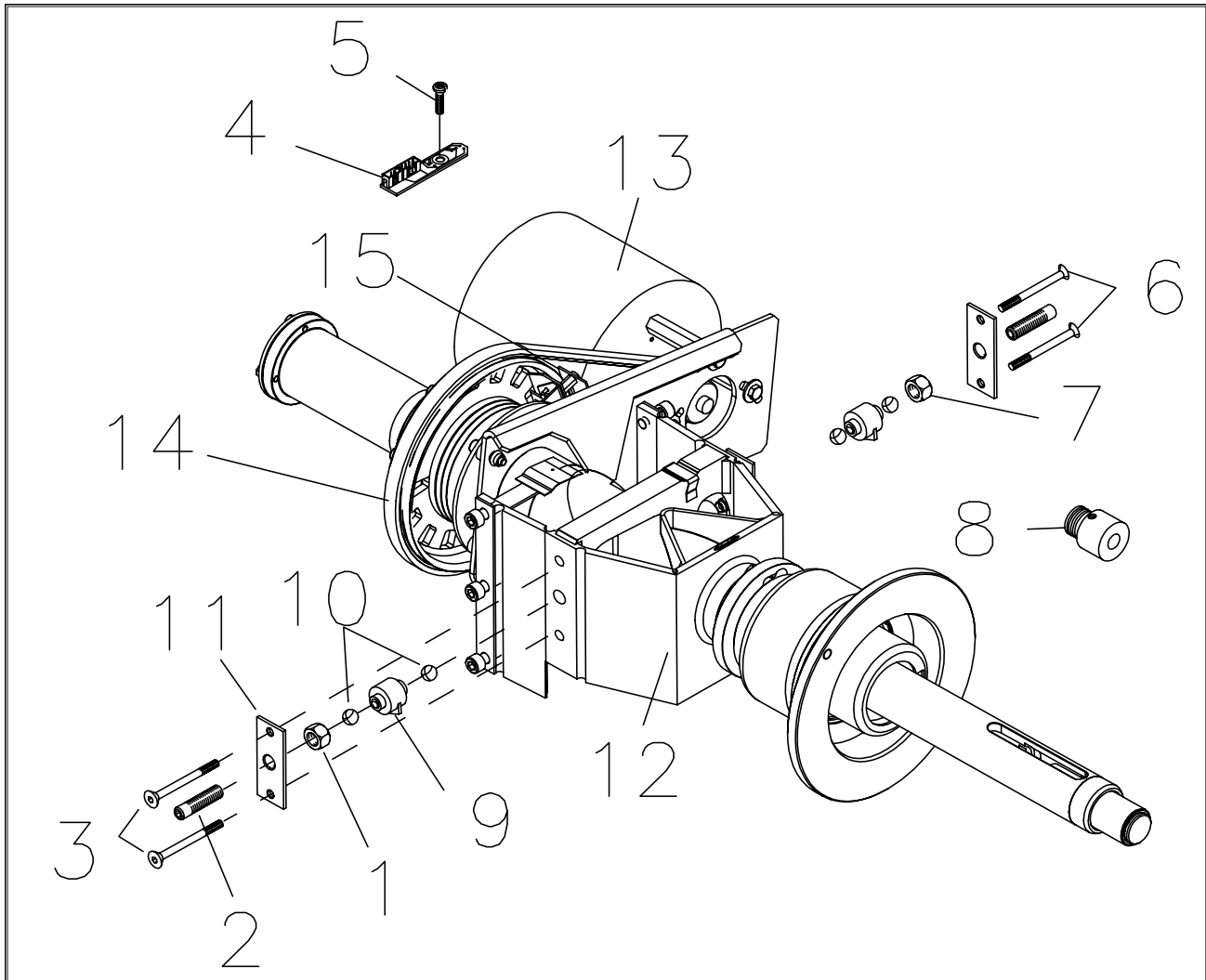
2D SAPE ASSEMBLY
EAA0338G92A



ITEM	QTY	PART NO	DESCRIPTION
1	1	EAM0021D34A	BOLT
2	1	EAC0058D06A	RIEMENHALTEROLLE MIT EINLEGETEIL ROPE REEL 290MM
3	1	EAC0058D13A	COG WHEEL 28 TEETH
4	1	EAL0349G31A	DISTANCE SCALE DECAL (MM)
5	1	2-09437A	CUTOUT BLADE RELAY 3VDC, 3.8W, TRACTIVE
6	1	EAC0058D58A	FEDER-SICHERUNGSDECKEL SAFETY COVER
7	1	EAC0087G60A	M1 SAPE SUPPORT
8	1	EAM0053G17A	STANDARD. ROD SAPE, M1
9	3	EAM0053G15A	STANDARD. ROLL PIN A.S.S
10	1	EAC0087G68A	STANDARD. TORSION LOCK
11	1	EAC0087G71A	STANDARD CALMPING PLATE
12	3	EAC0094G24A	STANDARD. SAPE A.S.S. SPACER
13	1	EAM0055G94A	STAND. SAPE A.S.S. TOOTHED BELT
14	2	EAA0266D20A	ROTATIVE TRANSDUCER 100HM
15	2	2-07657A	CLAMPING DEVICE W/NUT
16	1	EAA0277D94A	SAPE ARM EUROPE W/ EJECTOR
17	3	1-16633A	NUT,SELF LOCK. ALL-METAL M6 A2J DIN6925
18	2	1-20341A	WASHER, PLAIN A 2,7-ST- A2J UNI6592 DIN
19	2	1-46809	SCREW-HEX SOCKET HEAD CAP M4X6 8.8 -A2J
20	2	1-5904	SCREW FIL HD M 2.5 X 20MM DIN 84
21	2	1-11726A	SCREW, SELF TAPPING FOR PLASTIC D4X8MM
22	3	1-03405A	MSCR, OVAL HD M 6 X 14MM
23	1	1-38910	SCREW M4X8SET CUP ZP
24	1	1-03967A	SPRING-SAPE AUTO STOP SYSTEM
25	1	1-13377A	CIRCLIP-27MM X 1.20MM DIN 471
26	1	1-3824	SCREW-SELF TAP,6 X 12MM
27	6	1-9841	WASHER PLAIN, 6MM
28	1	EAC0058D12A	COG WHEEL - 56 TOOTH
29	1	EAC0058D29A	GEARTOOTH
30	2	EAM0005D60A	SMALL GUIDE

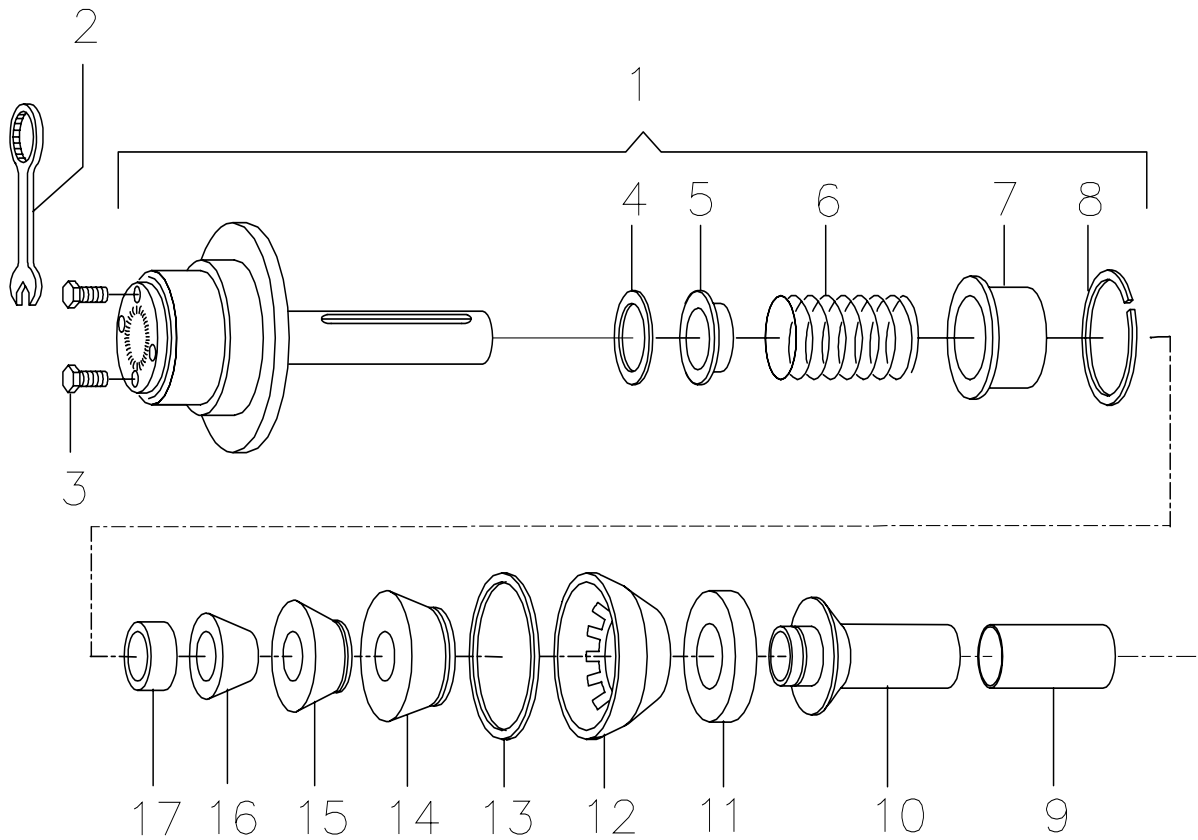
VIBRATORY ASSEMBLY (POWER CLAMP)

EAA0344G06A



REF	QTY	PART NUMBER	DESCRIPTION
1	1	1-11833	NUT-HEX M 10 X 1 DIN 934
2	2	EAM0005D07A	SETSCREW - HEX SOCKET M 10 X 1
3	2	1-19903A	SCREW HEX SOCKET / COUNTERSUNK M 4 X 65
4	1	EAA0344G00A	ENCODER PCB
5	1	1-13004	SCREW PHILLIP PAN HD M 4 X 6
6	2	1-17403	SCREW HEX SOCKET / COUNTERSUNK M 4 X 25
7	1	1-4034	NUT - HEX M 10 X 1 DIN 439
8	1	EAM0005D08A	PULLEY SMALL
9	1	EAA0260D59A	TRANSDUCER
10	4	8-1144	BALL, STEEL
11	2	1-2967	PRETENSION SPRING
12	1	EAA0344G06A	VIBRATOR ASS'Y-MOTORIZED
13	1	EAA0266D29A	MOTOR 230V/50-60HZ
14	1	8-3531	MULTIRIB BELT 5 PJ 711 DIN 7867
15	1	EAP0201D20A	POWER CLAMP ENCODER
*	1	EAW0239D00A	RIBBON CABLE VIBRATORY

CONES AND ACCESSORIES



1	EAA0283D46A	BASIC BODY OF ADAPTOR
2	8-03850A	WRENCH (WIDTH ACROSS FLATS 13 MM)
3	1-46601A	SCREW M8 X 25
4	1-18241A	WASHER 55X68X0.5
5	EAC0058D14A	SPRING CENTRING RING
6	1-07768A	COMPRESSION SPRING
7	EAS2025D14A	SPRING CASING
8	1-13077 CIRCLIP	
9	EAC0058D69A	PROTECTIVE SLEEVE
10	EAM0005D54A	CLAMPING SLEEVE
11	EAC0058D08A	PRESSURE RING
12	EAC0058D07A	CLAMPING HEAD
13	EAC0058D15A	PROTECTIVE RING
14	EAM0005D25A	CONE 96 – 116 MM
15	EAM0005D24A	CONE 74 – 99 MM
16	EAM0005D23A	CONE 42 – 77 MM
17	EAC0058D68A	SPACER RING

HOFMANN



Notice: The information contained in this document is subject to change without notice. Snacon Equipment makes no warranty with regard to this material. Snacon Equipment shall not be liable for errors contained herein or for incidental consequential damages in connection with furnishings, performance, or use of this material.

This document contains proprietary information which is protected by copyright and patents. All rights are reserved. No part of this document may be photocopied, reproduced, or translated without prior written consent