

# HOFMANN



## *WHEEL BALANCER*



## *Parts Manual*

TEEWB746A3

All information contained or disclosed in this document is considered confidential and proprietary by Snap-on Equipment. All manufacturing, use, reproduction, and sales rights are reserved by Snap-on Tools Company and the information contained herein shall not be used in whole or in part without the express written consent of Snap-on Equipment.

# Table of Contents

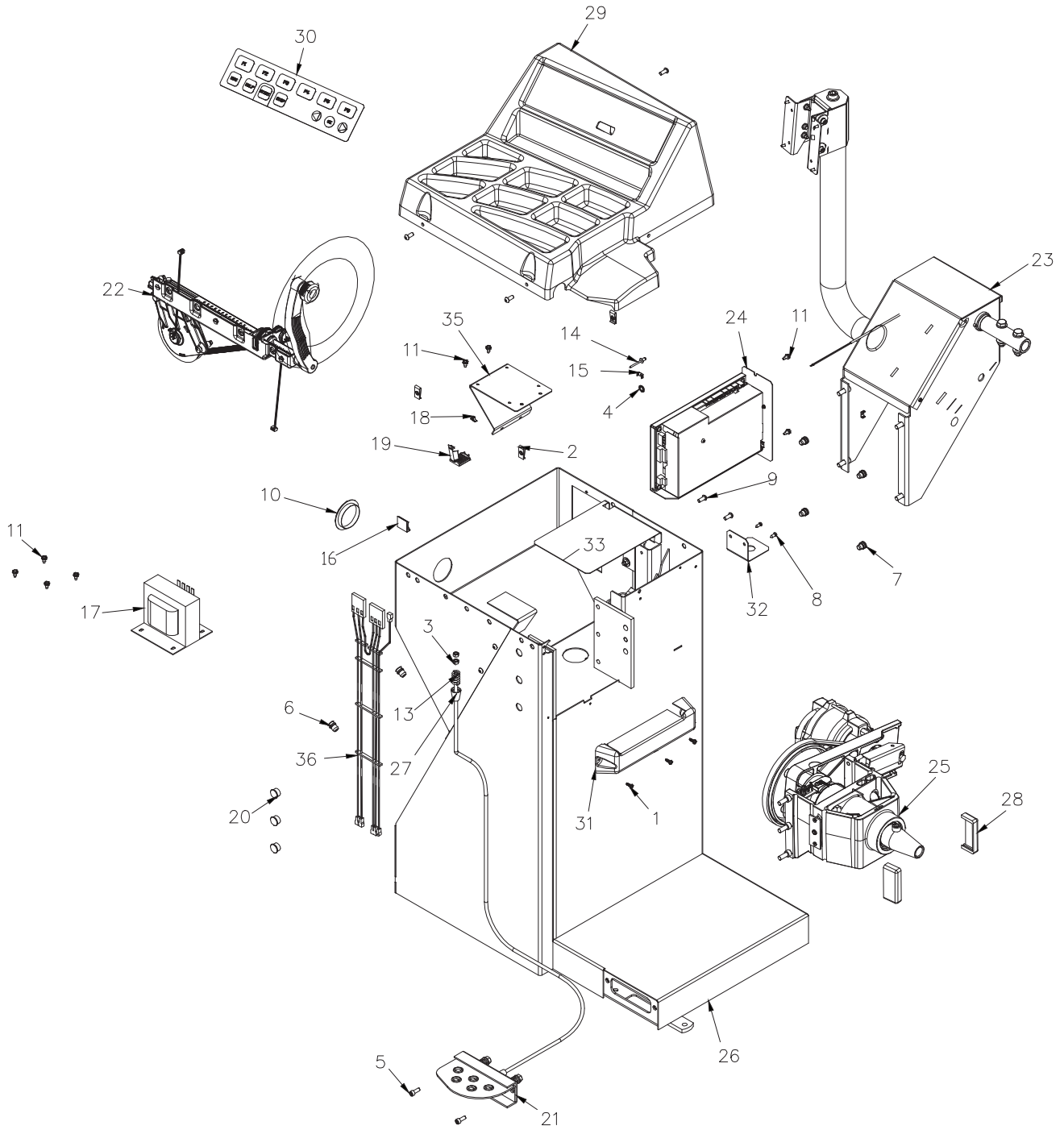
BOM .....	3
BALANCER ASSEMBLY .....	4
VIBRATORY ASSEMBLY .....	6
CONE & ACCESSORIES .....	8
2D SAPE ASSEMBLY .....	9
WHEEL GUARD SUPPORT.....	10
SONAR, HOOD ASSEMBLY .....	12



## BOM

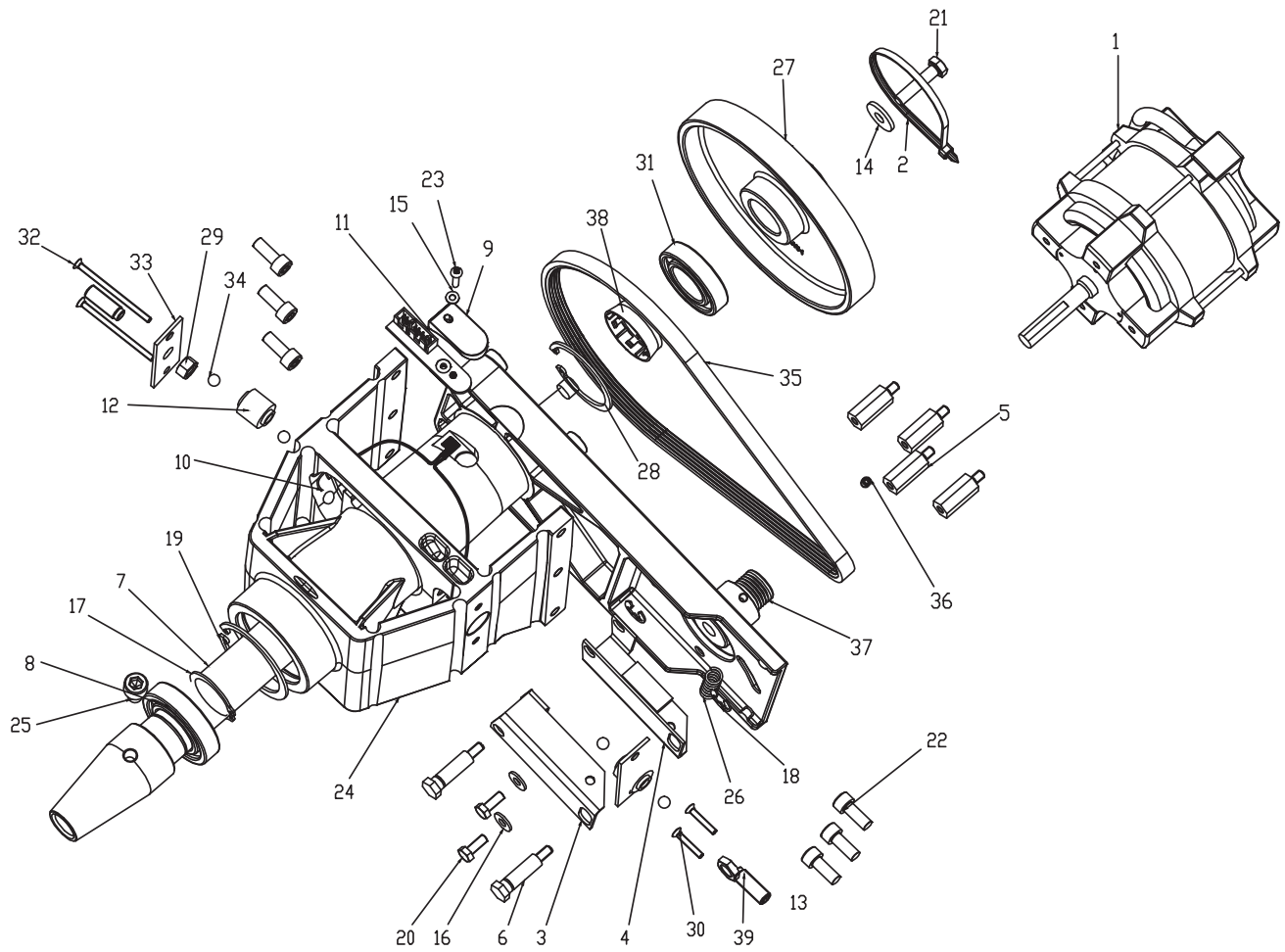
PART NO.	DESCRIPTION
1-01215A	SCREW - LAG, 5/16 X 1 1/2"
1-2541	WASHER - FLAT, 5/16"
EAA0247G21A	CALIPER-RIM WIDTH-ST4007580
EAA0369J47A	ASS'Y, VID BAL, GEODYNA 3900S
EAA0283D19A	ADAPTER KIT
EAC0060G02A	FLANGE WSHR CONE STORAGE
EAL0343J76A	LABEL-ELECTRICAL / SERIAL
EAL0420J32A	LABEL - HNA GEODYNA 3900S
EAL0341J96A	LABEL-BALANCER WARNING REAR
1-04076A	PLUG-HOLE 9283K16
EAL0341J97A	LABEL-BALANCER WARNING SIDE
EAL0341J60A	LABEL-PATENT
EAL0341J44A	LABEL - MAX WEIGHT
EAM0005D40A	CALIBRATION WEIGHT
EAM0006G01A	PIN CONE STORAGE
EAX0039J00A	CORD-POWER 115V
ZEEWB746A9	LIT PACK -EEWB746A VIDEO BAL
EAK0309J26A	KIT - MONITOR, VIDEO BAL
3-03808B	MONITOR-19 IN WIDE W/SPEAKERS
1-54310A	SCREW SET M4X20 FLT 93245A119
1-13533A	NUT BARB M4 (EXT WASHER)
EAA0376G41A	ASS'Y - HOOD WITH SONAR
2-3657	CABLE CLAMP. FLAT CABLE

BALANCER ASSEMBLY  
EAA0369J46A



SYM	REQ	PART NO	DESCRIPTION
1	3	1-07424A	SCREW - PAN HD, 8-18 X 1/2
2	5	1-07439A	NUT - SPEED, "U" TYPE,
3	2	1-11633	NUT-M6 X 5,2mmTHK, BLK
4	1	1-1548	WASHER-EXT,SHAKEPROOF 6MM
5	2	1-16309	SCREW - SHCS, M6 X 16mm,
6	4	1-17659A	NUTSERT - M10
7	4	1-18359A	NUTSERT, M8
8	2	1-18523A1	SELF TAPPING SCREW D4,8x13mm
9	5	1-2509	SCREW-BHCS, 1/4 - 20 X 5/8
10	1	1-2676	PLUG-HOLE, 2"DIA
11	8	1-3724	SCREW-SELF TAP,5 X 10MM
13	1	1-6668	COMPRESSION SPRING
14	1	1-7558	POP RIVET-3/16"
15	1	2-23201	TERMINAL LUG-6.3MM X .8MM POP RIVET
16	3	2-3657	CABLE CLAMP- FLAT CABLE
17	1	7-16201A	TRANSFORMER- 500VA AUTOMATIC
18	2	8-02340A	CLIP KEYHOLE NYLON
19	1	8-09619A	STRAIN RELIEF - FLAT CABLE
20	3	8-7216	PLUG-HOLE, 16MM DIA
21	1	EAA0263G07A	ASSY-BRAKE PEDAL
22	1	EAA0338G73A	STAND. SAPE 1D-2D ASSY
23	1	EAA0363G98A	WHEEL GUARD SUPPORT
24	1	EAA0364G03A	ASSY BOX INTEGRATED
25	1	EAA0364G84A	ALU. VIBRATOR-MOT. TAPERED MEC BRAKE
26	1	EAA0369J31A	CABINET ASSY - S2, BLUE
27	1	EAC0053J15A	BRAKE SPACER
28	2	EAC0060G08A	PROTECTION FOR PIEZO-SPRING
29	1	EAC0100G59A	L.E. VIDEO WEIGHT TRAY
30	1	EAL0413G94A	L.E. VIDEO NO BRAND FLAT
31	1	EAM0062G50A	VIBRATORY SYSTEM COVER
32	1	EAS2113J77A	BRACKET - CAL WEIGHT
33	1	EAS2113J78A	SHIELD - FIRE
34	8	EAS2116G12A	SPACER - VIB 0.2MM
35	1	EAS2118J60A	PLATE-TRANSFORMER, S2 CABINET
36	1	EAW0233J07A	HARNESS-WIRING, TRANSFORMER
37	1	EAW0277G49A	SONAR CABLE
38	1	EAW0277G76A	SONAR SENSOR EXTENSION CABLE

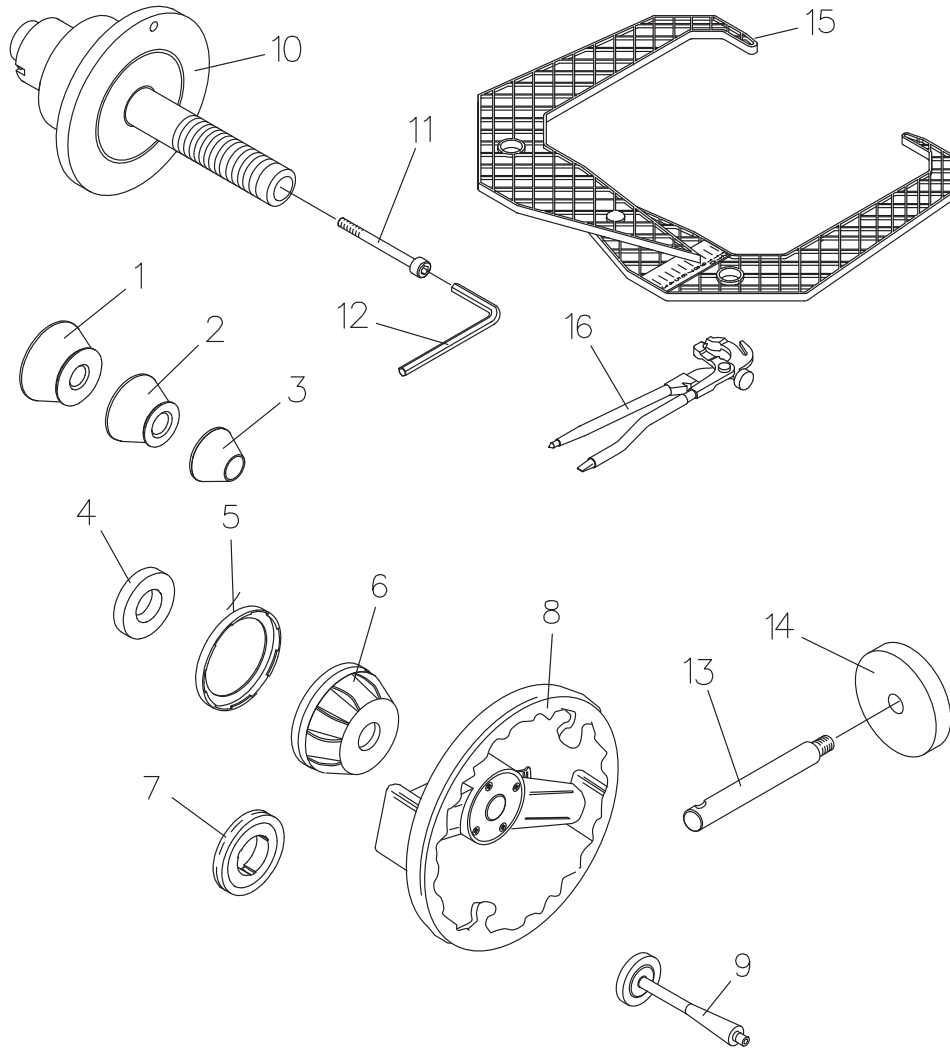
VIBRATORY ASSEMBLY  
EAA0364G84A





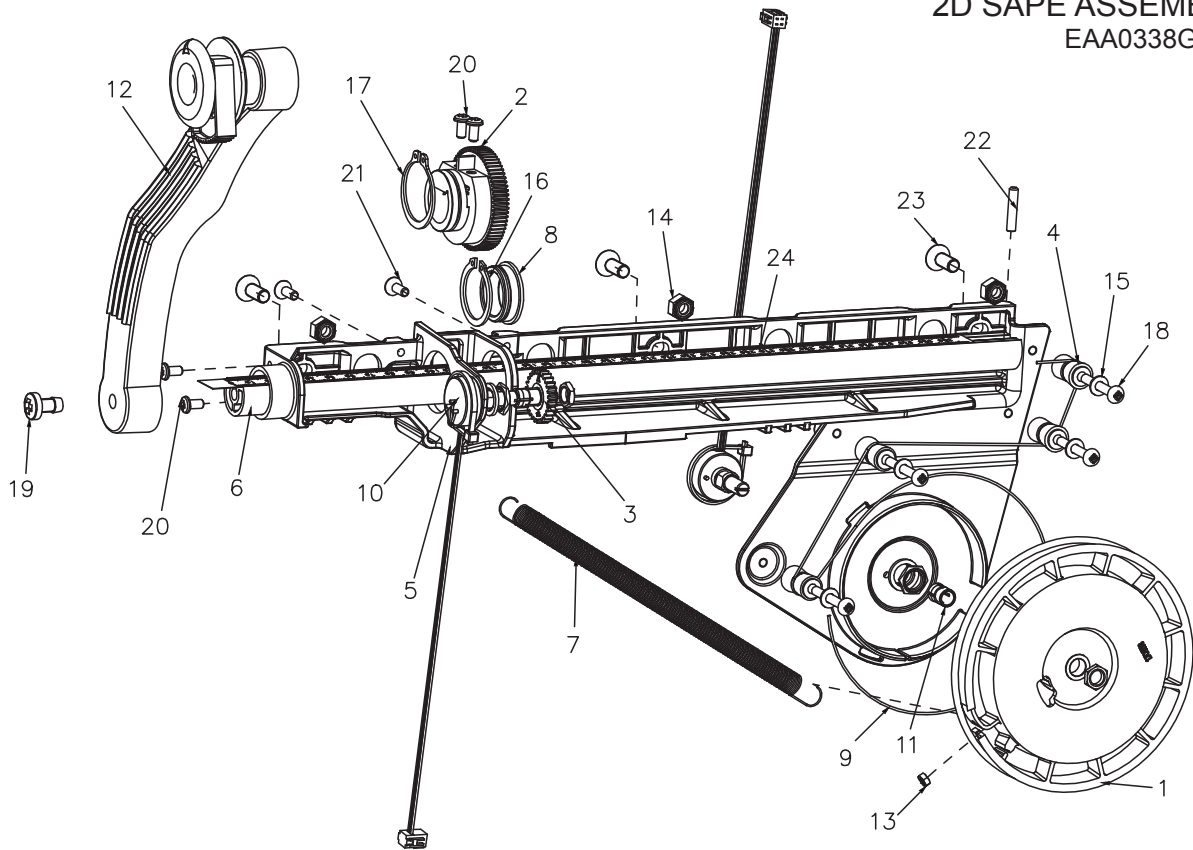
SYM	REQ	PART NO	DESCRIPTION
1	1	2-59366A	Y2K UL MOTOR CAR VERSION EME
2	1	5-05145A	CABLE TIE
3	1	EAA0260D56A	BRAKE LEVER A CPL.
4	1	EAA0260D57A	BRAKE LEVER B CPL.
5	4	EAM0005D09A	MOTOR DISTANCE BOLT
6	2	EAM0005D10A	BOLT SW13
7	1	EAM0048G92A	ALU. GROUP MAIN SHAFT TAPERED
8	1	1-06663A	BALL BEARING 6007 2NSE 62/35/14
9	1	EAC0094G11A	ALU VS ENCODER BOARD PROTECTION
10	1	EAW0240G67A	VIBRAT.SYSTEM CABLE WITHOUT TEMP.SENSOR
11	1	EAA0344G00A	OPTO-ENCODER BOARD WITH LENS
12	2	EAA0260D59A	PIEZO SENSOR
13	1	1-04634A	NUT - HEX, M10, 1,5mm PITCH, ZINC
14	1	1-17841	WASHER - d. 8X24
15	1	1-9641	PLAIN WASHER D4mm
16	2	1-16641	WASHER PLAIN D 6mm
17	2	1-4977	RING, STOP FOR SHAFTS D35
18	2	1-13177	CIRCLIP D. 9
19	1	1-20777A	RING, STOP FOR HOLES D62X2 UNI7437
20	2	1-46701A	SCREW HEX. HEAD M6x16
21	1	1-32901	SCREW, HEXAGON CAP 8X35 8.8 A2J DIN933
22	6	1-17709	SCREW - SHCS M8 X 20mm ISO4762, DIN912
23	1	1-35006A	SCREW - PHMS,M4X20 4.8 A2J DIN7985 * *
24	1	EAA0364G77A	Preass. ALU V. S. mot. tapered interf.
25	1	1-18809	SCREW, HEX SOCKET HEAD M10x12
26	1	1-6568	Compression Spring 1.6 x 10 x 58.5
27	1	EAM0005D12A	Drive wheel
28	1	1-10477	RETAINING RING FOR BORES J55x2 DIN472
29	1	1-11833	NUT - M8 - X 1.25 DIN 934
30	2	1-17403	MSCR, FLH - M 4 x 25mm
31	1	1-1863	BALL BEARING 6006 ZZE
32	2	1-19903A	MSCR, FLH - M 4 x 65mm
33	2	1-2967	Vorspannfeder Pretension Spring
34	4	8-1144	Ball, Steel
35	1	8-3531	MULTIRIB BELT 5 PJ 711 DIN7867
36	1	1-28410	SET SCREW
37	1	EAM0005D08A	Motor Pulley Y2K
38	1	EAC0058D94A	POLYGON RING
39	2	EAM0005D07A	Gewindestift M10x1 Set Screw M10x29 "Snap-on"

## CONE & ACCESSORIES



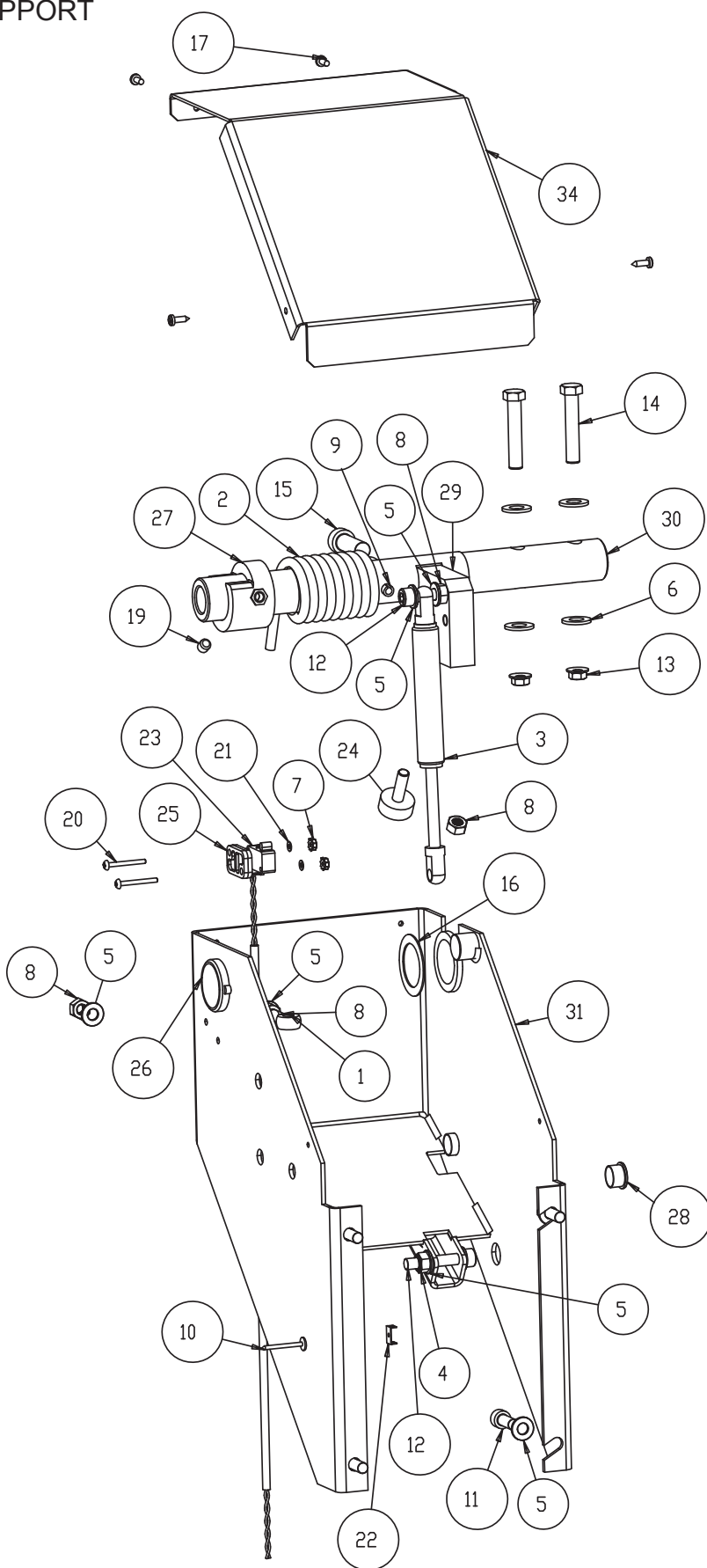
SYM	PART NO	DESCRIPTION
1	EAM0005D25A	CONE 96-115 MM / 3.7"-4.52"
2	EAM0005D24A	CONE 72-99 MM / 2.8"-3.9"
3	EAM0005D23A	CONE 43-77 MM / 1.7"-3.0"
4	EAC0058D68A	SPACER RING
5	EAC0058D15A	SOFT PROTECTOR RING
6	EAC0058D07A	CUP - PRESSURE
7	EAC0058D08A	DISK - SMALL PRESSURE
8	6415899	COMPLETE ZIPLOCK RINGNUT
9	EAM0005D40A	WEIGHT - CALIBRATION
10	EAA0283D19A	COMPLETE ADAPTER INCLS 11 & 12
11	1524175	M16 X 240 HEX CAP SCREW
12	1101013	HEX WRENCH - 14MM
13	EAM0006G01A	PIN - ACCESSORY
14	EAC0060G02A	FLANGE - COVER HOOK
15	EAA0247G21A	CALIPER - RIM WIDTH
16	58839	WEIGHT PLIERS

2D SAPE ASSEMBLY  
EAA0338G73A



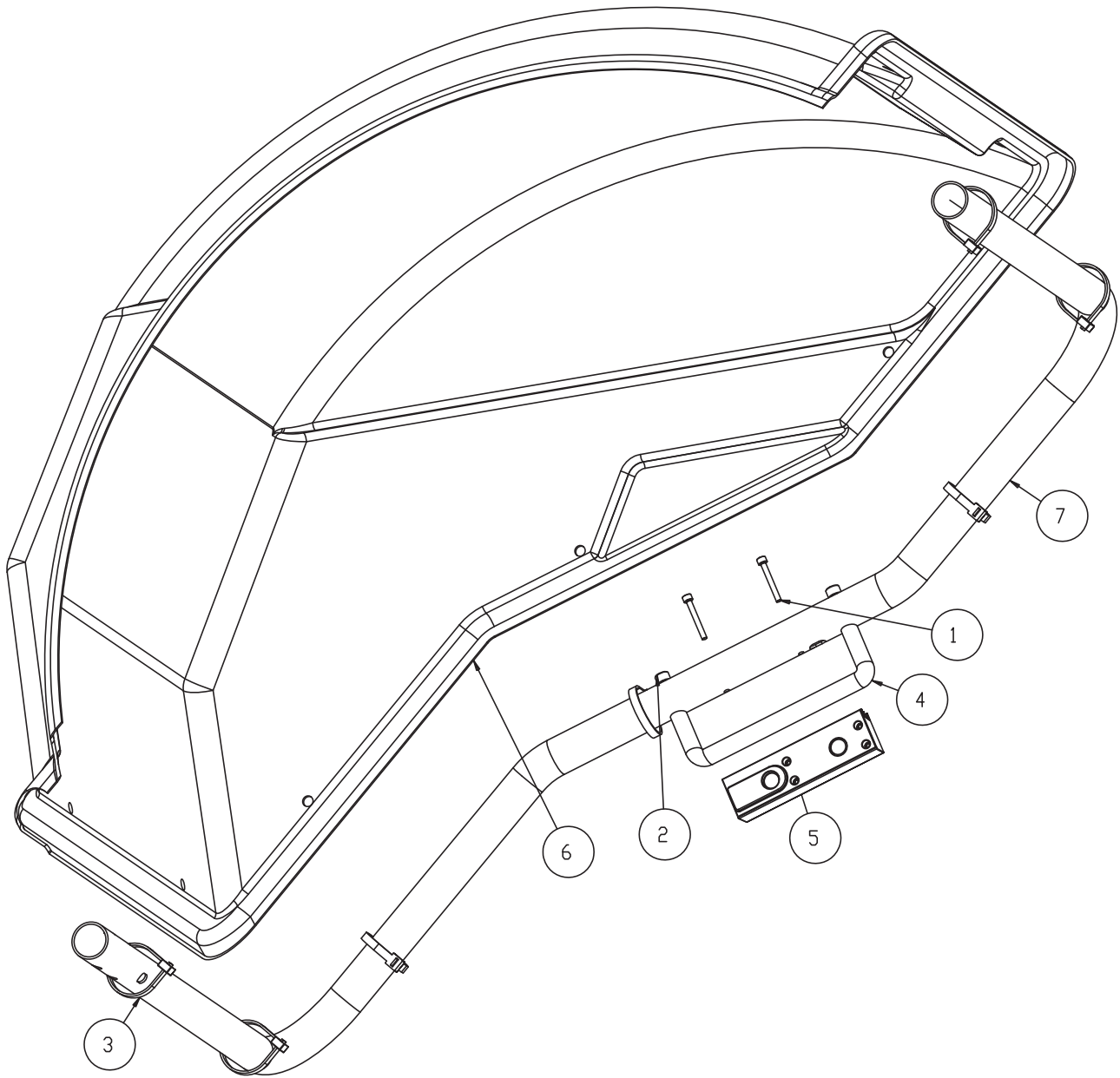
SYM	REQ	PART NO	DESCRIPTION
1	1	EAC0058D06A	ROPE REEL 290mm
2	1	EAC0058D12A	Zahnrad, 56z Cog Wheel 56 teeth
3	1	EAC0058D13A	Cog Wheel 28 teeth
4	4	EAM0005D35A	GUIDING REEL
5	1	EAC0087G59A	STAND. S1 SAPE SUPPORT
6	1	EAM0053G16A	STANDARD. ROD SAPE, S1
7	1	1-06567A	STAND SAPE TENSION SPRING
8	1	EAM0068G76A	S2-2D SAPE BUSHING
9	1	6-00604A	ROPE HONEYWELL SPECTRA FIBER 1000 D=0.6
10	2	EAA0266D20A	ROTATIVE TRANSDUCER 100HM
11	2	2-07657A	CLAMPING DEVICE W/NUT
12	1	EAA0277D94A	SAPE Arm Europe w/ Ejector
13	1	1-11233	NUT, HEX, M3
14	3	1-9933	NUT, PREVAILING TORQUE M6
15	4	1-9641	PLAIN WASHER D4mm
16	1	1-4577	RING SNAP,25X1.20 DIN471
17	1	1-13377A	Circlip for Shaft A27x1,20
18	4	1-24906A	SCREW, PAN HEAD PHIL M4x30
19	1	1-3824	Threadforming Screw C-M6x12
20	4	1-11726A	SCREW, SELF TAPPING FOR PLASTIC D4x8MM
21	2	1-12126A	SELF TAP. SCREW PT WN1413 4x12 ZINC
22	1	1-7810	SCREW, SET M4x20 FLAT TIP
23	3	1-22003A	SCREW SOCKET FLAT HEAT M6X16 ZINC.
24	1	EAM0086G85A	DISTANCE SCALE DECAL FOR SAPE S2

WHEEL GUARD SUPPORT  
EAA0369J53A



SYM	REQ	PART NO	DESCRIPTION
1	1	1-01530	EYEBOLT-M8 X 50
2	1	1-04267A	SPRING-TORSION
3	1	1-06769A	GAS SPRING
4	1	1-10033	NUT, HEX, M8
5	10	1-10041	WASHER D.8 UNI6592-69/DIN125
6	4	1-10141	WASHER, PLAIN DIN 125A
7	2	1-15033	NUT-KEPS, M3 - .5
8	4	1-15933A	NUT - HEX, M8
9	1	1-12452	PINS - STRAIGHT SLOTTED 8X45 DIN 1481
10	1	1-7558	POP RIVET-3/16"
11	4	1-17709	SCREW - SHCS M8 X 20MM
12	2	1-18209	SHCS-M8 X 45
13	2	1-8133	NUT & WASHER ASSY 3/8 - 16
14	2	1-1101	SCREW - HHMS 3/8 - 16 X 2.00
15	1	1-20409	SCREW TCEI M12X35 12.9 BR
16	1	1-22441A	SHIM RING 32X45X1
17	4	1-22623A	SELF-TAPPING SCREW TCB
19	1	1-47810	SCREW, SET, FLT PT M8 - 1.25 X 8MM
20	2	1-7104	SCREW - PAN HS, M3 X 30
21	2	1-9541	WASHER-FLAT,M3 DIN 125A
22	1	2-23201	TERMINAL LUG-6.3MM X .8MM POP RIVET
23	1	EAW0233J08A	CABLE-SWITCH ASSY
24	1	8-14418A	BUMPER 25X10 / M8X25
25	1	EAC0053J16A	MICROSWITCH PLATE
26	2	EAC0058D36A	WHEELGUARD BUSHING D.32
27	1	EAC0058D38A	SCHALTRING SWITCH SEGMENT
28	2	8-7216	PLUG-HOLE, 16MM DIA
29	1	EAM0084J28A	WHEELGUARD STOP
30	1	EAM0084J29A	BACKPACK SHAFT
31	1	EAS2128J43A	L.E. VIDEO BACK PACK
34	1	EAS2128J41A	BACKPACK LID

HOOD ASSEMBLY WITH SONAR  
EAA0369J66A



SYM	REQ	PART NO	DESCRIPTION
1	2	1-15509	SCREW HSHC 5X40 8G ZINC
2	2	1-18209	SHCS-M8 X 45
3	7	5-03345A	CABLE TIE, PLASTIC
4	1	8-09233A	PLASTIC HANDLE
5	1	EAA0373G96A	ASSY SONAR BOX
6	1	EAC0100G21A	HOOD 42"
7	1	EAM0084J30A	L.E. VIDEO WHEELGUARD



Notice: The information contained in this document is subject to change without notice. Snaon Equipment makes no warranty with regard to this material. Snaon Equipment shall not be liable for errors contained herein or for incidental consequential damages in connection with furnishings, performance, or use of this material.

This document contains proprietary information which is protected by copyright and patents. All rights are reserved. No part of this document may be photocopied, reproduced, or translated without prior written consent of Snaon Equipment.