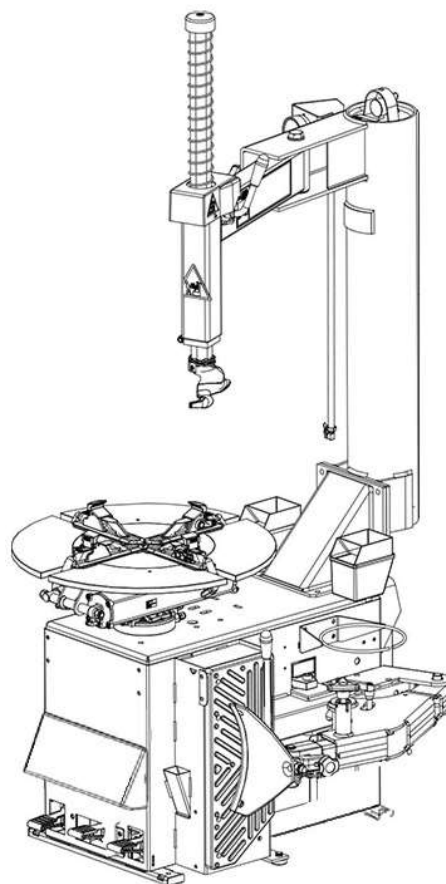


Spare Parts Pieces de Rechange Tabla de repuestos

# JohnBean®



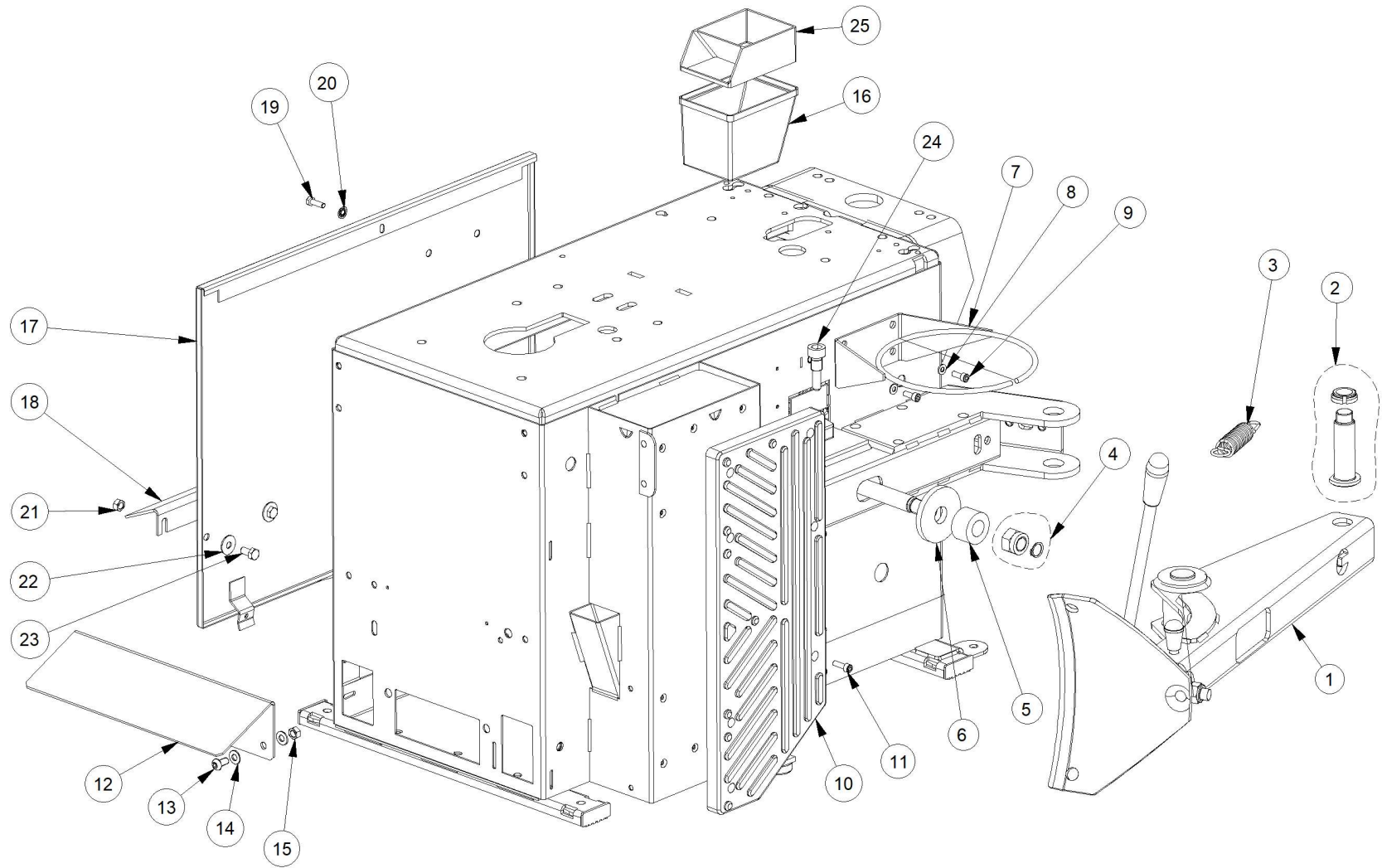
## EHP SYSTEM III



INDEX		Page
EAZ0122G43A_B2	CABINET	4
EAZ0090G72A_B	TANK COLUMN	7
EAZ0089G78A_C	24" TURNTABLE GT	11
EAZ0070G67A_D1	MOTOR AND GEARBOX ASSY	14
EAZ0122G09A_B1	MOTOR AND GEARBOX ASSY	18
EAZ0070G97A_A2	FOOT PEDAL ASSY	21
EAZ0033G69A_B1	BEAD BREAKER SYSTEM	25
EAZ0132G77A_B	AIR CONTROL SYSTEM	28
EEWH306AWD_E	MONOPHASE- USA MOTORS	31
TEEWH003S_B1	PNEUMATIC DIAGRAM - SWING	32
TEEWH003S_B2	PNEUMATIC DIAGRAM - SWING	33

**UPDATING GUIDE:**

**May 25: EAZ0132G77A\_A > EAZ0132G77A\_B, TEEWH001S > TEEWH003S\_B**



Pos	Code	Designation	Désignation	Designación	N.	Note	Nota	A	B	C
1	EAA0338G44A	BEAD BREAKER EXTENSIBLE	DEBALLONEUR EXTENSIBLE	DESTALONADORA EXTENSIBLE	1				X	
1	EAA0490G02A	BEAD BREAKER GROUP	GROUPE DETALONNEUR	GRUPO DESTALONADOR	1	HD			X	
2	EAK0306G20A	FULCRUM KIT FOR BEAD BREAKER ARM	KIT PIVOT BRAS DETALONNEUR	KIT PERNO BRAZO DESTALONADOR	1				X	
3	EAM0067G69A	SPRING-RECALL ARM, BEAD BREAKER	RESSORT RAPPEL BRAS DETALONNEUR	MUELLE REGRESO BRAZO DESTAL.	1				X	
4	EAK0306G23A	FIXING KIT FOR BEAD BREAKER ARM	KIT FIXATION BRAS DETALONNEUR	KIT FIJACIÓN BRAZO DESTALONADOR	1				X	
5	EAC0097G51A	WASHER - SHOCK ABSORBER	RONDELLE- AMORTISSEMENT	ARANDELA DE AMORTIGUACIÓN	1				X	
6	EAM0067G33A	WASHER,SUPPORT-BEAD BREAKER	RONDELLE APPUI DETALONNEUR	ARANDELA SOPORTE DESTALONADOR GALV.	1				X	
7	EAA0349G76A	RING- BOX, GREASE	COURONNE BOITE GRAISSE	ANILLO PORTAGRASA GALVANIZADO	1				X	
8	1-9841	WASHER,PLAIN d6 ZINC.	RONDELLE d.6	ARANDELA P.D.6 GALVANIZ.	2				X	
9	1-16309	SCREW HEX SOCKET M 6X16	VIS CHc	TORNILLO TCEI	2				X	
10	EAC0099G22A	PAD- SUPPORT, BEADBREAKER	PALIER APPUI DETALONNEUR	TAMPÓN SOPORTE DESTALONADOR	1				X	
11	1-16409A	SCREW TCEI 6X20 8G	VIS CHc	TORNILLO TCEI	7	M6X20			X	
12	EAS2169G75A	PEDAL PROTECTION	PROTECTION PEDALES	PROTECCIÓN PEDAL RAL3000	1	RAL3000			X	
13	1-9902A	SCREW	VIS	TORNILLO	2				X	
14	1-17741	WASHER d.8	RONDELLE P.d.8 ZINC.JAUNE	ARANDELA P.D.8	4				X	
15	1-11733	NUT M8	ECROU M8 6S	TUERCA M8 6S	2				X	
16	8-03129A	BOX-GREASE	BAC GRAISSE	CONTENEDOR PARA GRASA	1				X	

**A** = available - disponible - disponible

**B** = on request - sur demande - a petición

**C** = suggested - suggeré - sugerido

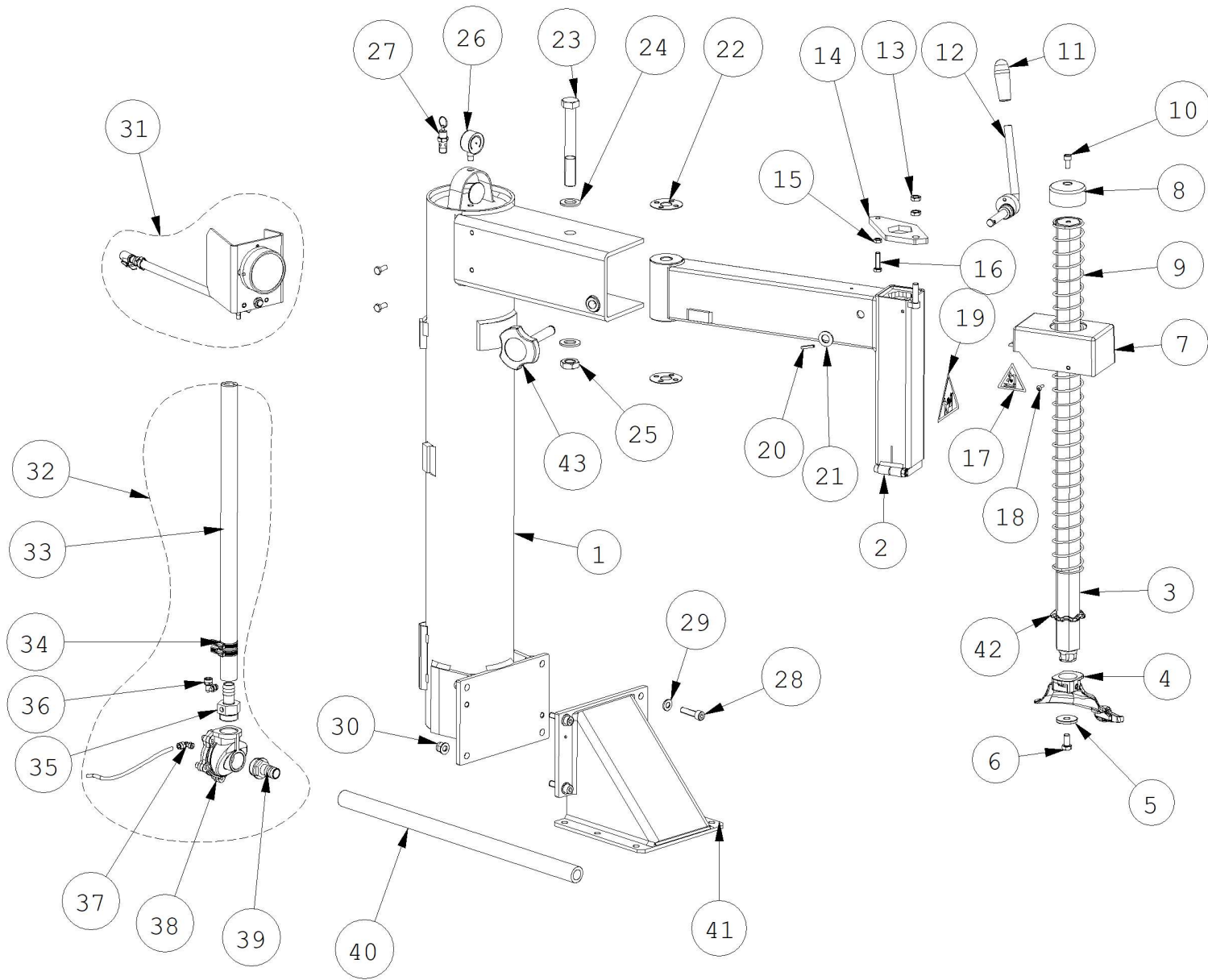
Pos	Code	Designation	Désignation	Designaciòn	N.	Note	Nota	A	B	C
17	EAS2126G60A	BLACK SIDE	CÔTE NOIRE	FLANCO NEGRO	1				X	
17	EAS2238G37A	SIDE PANEL WITH COVER	CÔTE NOIRE	FLANCO NEGRO	1				X	
18	EAS2115G83A	PROTECTOR,PEDAL	PROTECTION PEDALE	PROTECCIÓN PEDAL NEGRO RECUBIERTO	1				X	
19	1-30901A2	SCREW TE 6X20 8G	VIS H	TORNILLO TE	1				X	
20	1-1548	WASHER-LOCK d.6	RONDELLE DE d.6	ARANDELA DE D.6	1		DIN 6798/A		X	
21	1-11733	NUT M8	ECROU M8 6S	TUERCA M8 6S	2				X	
22	1-17841	WASHER - d. 8X24	RONDELLE d.8X24	ARANDELA COMUN D.8X24 GALVANIZ.	2				X	
23	1-32501A	SCREW 8X16 8G	VIS H	TORNILLO TE	2				X	
24	EAM0067G34A	BEAD BREAKER CYLINDER FITTING SCREW	FIS FIXATION VERIN DETALONNEUR	TORNILLO FIJACIÓN CIL.DESTALON.	2				X	
25	1-31581A	PLUG-VALVE, HOUSING	BAC SOUPAPE	TAPA PORTAVÁLVULAS	1				X	

**A** = available - disponible - disponible

**B** = on request - sur demande - a petición

**C** = suggested - suggeré - sugerido

EAZ0090G72A.B



06/2022

Pos	Code	Designation	Désignation	Designación	N.	Note	Nota	A	B	C
1	EAS2169G73A	SWING COLUMN	COULONNE A DEPORT LATERAL	COLUMNNA OSCILANTE	1			X		
2	EAA0440G41A	SWING ARM	BRAS A DEPORT LATERAL	BRAZO OSCILANTE	1			X		
3	EAM0122G32A	ROD-VERTICAL	AXE VERTICALE	BARRA VERTICAL	1			X		
4	EAA0329G95A	MOUNTING/DEMOUNTING TOOL	OUTIL P. MONTAGE ET DEMONTAGE	HERRAMIENTA P. MONTAJE Y DESMONTAJE	1	A		X		
5	EAM0032G02A	WASHER- TOOL CLAMPING	RONDELLE FIXATION OUTIL	ARANDELA BLOQUEO HERRAMIENTA	1			X		
6	1-34301A	SCREW HEX 10X20 8G	VIS H	TORNILLO TE	1			X		
7	EAM0126G17A	PROTECTION, UPPER TOWER	PROTECTION SUPERIEUR POTENCE	PROTECCIÓN SUPERIOR BRAZO	1			X		
8	EAM0140G92A	COVER FOR HEX BAR	COUVERCLE TIGE HEXAGONALE	TAPA VARILLA HEXAGONAL	1				X	
9	EAS2153G47A	SPRING-RECALL, TOWER,VERTICAL	RESSORT RETOUR TIGE VERTICALE	RESORTE REGRESO BARRA VERTICAL	1			X		
10	1-17609A	SCREW, 8X16 8.8 UNI5931-67	VIS CHc	TORNILLO TCEI	1			X		
11	EAC0078G04A	HANDLE-RUBBER	POIGNEE POUR LEVIER	MANIJA PARA PALANCA	1			X		
12	EAS2108G36A	LEVER, REGISTER	LEVIER REGLAGE	LEVA AJUSTE	1			X		
13	1-19633B	NUT- M10 6S BLK UNI5589-65	ECROU M10 6S	TUERCA M10 CL.8 BR	2			X		
14	EAS2153G46A	LEVER- NECKING	LEVIER ETRANGLEMENT	PALANCA ESTRANGULADOR	1			X		
15	1-15933A	NUT M8 DIN 936 - UNI 5589	ECROU M8 6S	TUERCA M8 CL.8 BR BAJO	1			X		
16	EAM0067G26A	SCREW, ADJUSTMENT- ROD	VIS REGLAGE CRIC	TORNILLO AJUSTE CARRACA	1			X		
17	EAL0408G42A	STICKER DANGER	PLAQUETTE DANGER	ADHESIVO PELIGRO	2			X		

**A** = available - disponible - disponible

**B** = on request - sur demande - a petición

**C** = suggested - suggeré - sugerido

Pos	Code	Designation	Désignation	Designación	N.	Note	Nota	A	B	C
18	1-49709A	SCREW TBEI 5X16 8.8	VIS BHc	TORNILLO TBEI	3			X		
19	EAL0408G44A	DANGER LABEL	PLAQUETTE DANGER	TARJETA DANGER	1			X		
20	1-6452	PIN, STRAIGHT SLOTTED	BROCHE ELASTIQUE	PASADOR ELÁSTICA	1			X		
21	1-10341	WASHER - d.14	RONDELLE d.14	ARANDELA PLANA D.14 GALVANIZ.	1			X		
22	EAM0067G29A	WASHER - ADJUSTMENT	RONDELLE DE REGLAGE	ARANDELA DE REGULACION	2			X		
23	EAM0067G25A	SCREW, SWING ARM SUPPORT	VIS AXE BRAS DEPORTE	TORNILLO PIVOTE BANDERA	1			X		
24	1-10641	WASHER	RONDELLE	ARANDELA	2			X		
25	1-21633A	NUT	ECROU	TUERCA	1			X		
26	8-06120A	MANOMETER-RADIAL 0-16 D.40	MANOMETRE RADIAL 0-16 D.40	MANÓMETRO RADIAL 0-16BAR D.40	1			X		X
27	1-31381A	VALVE, ASME SAFETY, 1/4" BSPT	SOUPAPE DE SURETE	VALVULA DE SEGURIDAD	1					X
28	1-19409	SCREW TCEI 10X40	VIS TC SIX PANS 10X40 8.8ZINC.	TORNILLO TCEI 10X40 8.8 CINC.	4			X		
29	1-10141A1	WASHER P.D.10	RONDELLE P.D.10 ZINC.BLANCHE	ARANDELA P.D.10 CINC.BLANCA	8			X		
30	7020879	NUT SELFCLAMPING	ÉCROU AUTOBLOQ.	TUERCA AUTOBLOC.	4			X		
31	EAA0332G48A	ASSY, GAUGE-PRESSURE PSI / Kpa	GROUPE MANOMETRE PSI/Kpa	GRUPO MANOMETRO PSI/Kpa	1					X
32	EAA0351G03A	ASSY, VALVE- PNEUMATIC	GROUPE VANNE PNEUMATIQUE	GRUPO VALVULA NEUMATICA	1					X
33	27096	HOSE, AIR- HIGH PRESSURE	TUYAU AIR HAUTE PRESSION	TUBO AIRE ALTA PRESION	1			X		
34	EAM0075G29A	CLIP, LOCKING-HOSE	BANDE SERRAGE TUYAU	FAJUELA SERRAJE TUBO	4			X		

**A** = available - disponible - disponible

**B** = on request - sur demande - a petición

**C** = suggested - suggeré - sugerido

Pos	Code	Designation	Désignation	Designación	N.	Note	Nota	A	B	C
35	15658	FITTING, RUB.HOLDER 1" LONG	RACCORD SUPP.CAOUTCHOUC 1"	CONEXIÓN PORTA GOMA 1 "LARGA	1			X		
36	1-17279A	FITTING "L" 6X8 1/8	RACCORD "L" 6X8 1/8	CONEXIÓN "L" 6X8 1/8	1			X		
37	1-17179A	ELBOW FITTING "L" 4X6 1/4"	RACCORD A L 4X6 1/4"	CONEXIÓN DE TORNILLO EN "L" 4X6 1/4"	1			X		X
38	1-29581A	VALVE,AIR-CONTROLLED	SOUPAPE COMAN.PNEUM.	VÁLVULA DE MANDO NEUMÁTICO	1			X		X
39	EAM0071G99A	FITTING , SUPPORT M1"-20	RACCORD SOUTIEN	CONEXIÓN PORTAGOMA	1			X		
40	14121	HOSE, AIR	TUYAU AIR	TUBO AIRE L=600	1			X		
41	EAS2169G72A	COLUMN SUPPORT	SUPPORT COULONNE	SOPORTE COLUMNA	1			X		
42	EAC0094G02A	RING, SHOCK-ABSORBER	BOUCLE AMORTISSEUR	ANILLO AMORTIGUADOR	1					X
43	1-03512A	HANDLE WITH SCREW	VIS REGLAGE POT.DEPORTEE	TORNILLO REGLAJE COL.OSCILANTE	1			X		

**A** = available - disponible - disponible

**B** = on request - sur demande - a petición

**C** = suggested - suggéré - sugerido



Pos	Code	Designation	Désignation	Designación	N.	Note	Nota	A	B	C
1	EAA0409G85A	24" TURN TABLE CENTRE TYPE GT	AUTOCENTRANT 24" C/CENT.GT COULISSANT	AUTOCENTRANTE 24" C/CENT.GT DESLIZANTE	1			X		
2	EAS2153G40A	PLATE- TURNTABLE,CENTRAL 20"	BRIDE AUTOCENTRANTE CEN 20"	BRIDA AUTOCENTRANTE CEN 20"	1			X		
3	EAM0051G00A	GUIDE TERMINALS, CENTRE CONVERG.	GUIDE BORNES, CONV. CENTRE	GUÍA BORNES CONV. CENTRO	4			X		
4	EAM0075G00A	SLIDING CLAMP FOR CENTER TYPE TURNT/ ETAU COULISSANT A/CENTRE 20"-S2		ABRAZADERA CORREDERA C/CENTRO 20"-S2	4			x		
10	1-24603A	SCREW TSEI 8X60 12.9	VIS FHc	TORNILLO TSEI	4			X		
11	EAC0099G90A	JAWS PROTECTION	PROTECTION ETAUX	PROTECCIÓN ABRAZADERA NUEVO ST.	4			x		X
12	1-36109A2	SCREW TBEI 5X10 8G	VIS BHc	TORNILLO TBEI	4			X		
13	EAA0377G79A	BRACKET CYLINDERS	SIEGE VERINS	ESTRIBO CILINDROS	2			X		
14	EAK0329G88A	SCREWS AND BOLTS WITH ECCENTRIC	KIT VIS AVEC EXCENTR.PLAQUE BORNES	KIT TORNILLOS EXCÉNTR.PLACA BORNES	2			x		
15	EAK0329G89A	SCREWS AND BOLTS FOR CLAMPS	KIT VIS PLATEAU COMMANDE BORNES	KIT TORNILLOS PLACA MANDO BORNES	2			x		
16	EAK0330G35A	TT CYLINDER FITTINGS KIT	KIT RACCORDS CYLINDRE AUTOCENTRANT	KIT RACORES CILINDRO AUTOCENTRADOR	1					X
18	EAK0306G25A	TURNTABLE FIXING KIT	KIT RACCORDEMENT AUTOCENTRANT	KIT CONEXIÓN AUTOCENTRADOR	1			x		
19	EAM0043G49A	CLAMP ADJUSTMENT PLATE	PLATEAU REGLAGE ETAU	PLATO REGLAJE GARRA	2			x		
20	EAA0351G73A	CLAMPING PLATE	PLAQUE DE FIXATION	PLACA MANDO BORNES	1					X
21	EAA0410G31A	CYLINDER, TURNTABLE	CYLINDRE AUTOCENTRANT	CILINDRO AUTOCENTRADOR	2			X		
22	EAK0317G36A	TURNTABLE CYLINDER SEALS KIT	KIT JOINTS CYLINDRES RONDOS	KIT JUNTAS CILINDROS REDONDOS	2			x		
23	EAK0306G27A	SCREWS AND BOLTS FOR TURNTABLE CYL.	KIT VIS VERINS AUTOCENTRANT	KIT TORNILLOS CILINDROS AUTOCENTRADOR	1			X		

**A** = available - disponible - disponible

**B** = on request - sur demande - a petición

**C** = suggested - suggeré - sugerido

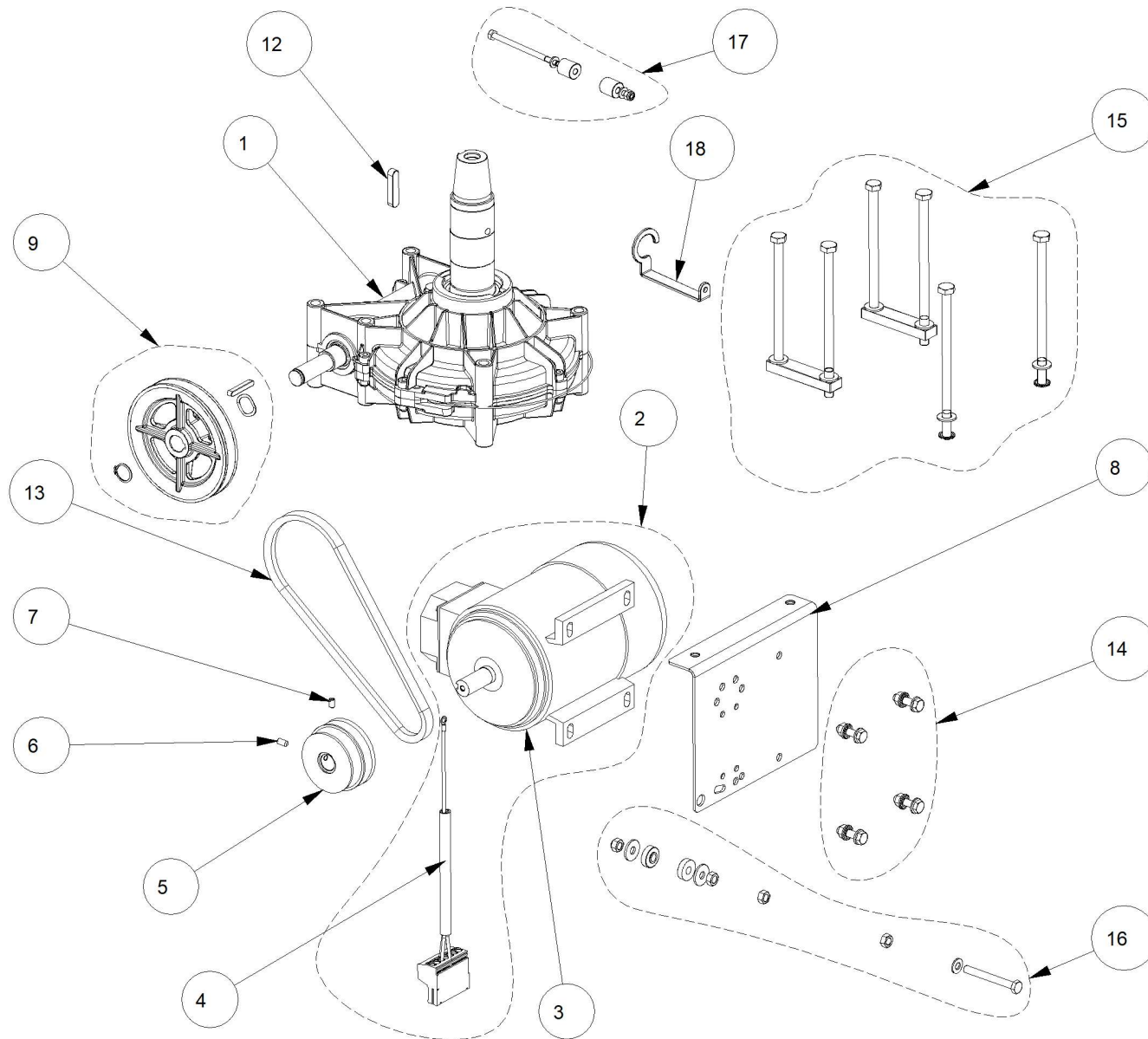
Pos	Code	Designation	Désignation	Designación	N.	Note	Nota	A	B	C
24	EAM0051G85A	WASHER	BAGUE DE SOUTIEN	ARANDELA DE SOPORTE	1			x		
25	1-18677A	RING- STOP D.60	ANNEAU D'ARRET	ANILLO DE PARO PARA ÁRBOL D.60	1			x		
26	EAK0330G32A	GT SYSTEM FITTINGS KIT	KIT RACCORDES SYSTEME GT	KIT CONEXIONES SISTEMA GT	1				x	
29	1-25952A	PIN DOWEL 5x10 UNI EN 28734	GOUPILLE	PASADOR	8			x		
30	EAK0317G09A	HOSES KIT FOR GT NOZZLES	KIT TUYAUX POUR BUSES GT	KIT TUBOS PARA BOQUILLAS GT	1			x		
31	EAA0304G69A	REVOLVING MANIFOLD, TUBELESS INFLATOR	DISTRIBUTEUR TOURNANT GT	DISTRIBUIDOR GIRATORIO GT	1			x		
32	EAA0338G76A	RING, OUTER - MANIFOLD	COLLIER EXTERIEUR COLLECTEUR	ARO EXTERIOR COLECTOR	1			x		
33	EAA0338G27A	RING-INSIDE, WITH SUPPORTS	COLLIER INTERIEUR AVEC ROULEMEN	RUEDA CON CONEXIÓNS	1			x		
34	EAC0087G50A	SEAL TUBELESS INFLATOR-FRONT	JOINT FRONTAL GONFLEUR	JUARNICIÓN FRONTAL HINCHADOR TUBELES	1			x		x
35	EAA0338G77A	SPRING, JOINT SEALING	RESSORT RETENUE JOINT	MUELLE SUJECIÓN JUNTA	1			x		
36	8-10814A	SEAL OR D.69.44X3.53	JOINT TORIQUE	JUARNICIÓN OR	3	ø69.44x3.53		x		
37	EAK0330G28A	REVOLVING MANIFOLD FITTINGS KIT	KIT RACCORDEMENT DISTRIB.TOURNANT	KIT RACORES DISTRIB. GIRATORIO	1				x	
40	EAK0317G08A	HOSES KIT FOR 24" TURNTABLES	KIT TUYAUX POUR AUTO-CENTRANT 24"	KIT TUBOS PARA AUTOCENTRANTE 24"	1			x		
41	EAA0408G23A	ASSEMBLED SLIDING JAW C/TYPE V2	CALE COULISSANTE C/C ASSEMBLEE V2	CUÑA DESLIZANTE C/C MONTADO V2	4			x		

**A** = available - disponible - disponible

**B** = on request - sur demande - a petición

**C** = suggested - suggeré - sugerido

EAZ0070G67A.D



2019/03

Pos	Code	Designation	Désignation	Designación	N.	Note	Nota	A	B	C
1	EAA0457G27A	GEARBOX	REDUCTEUR	REDUCTOR	1			X		
2	EAA0371G79A	1PH 115V LEFT MOTOR CABLE ASM	GROUPE CABLE MOTEUR 1F 115V G	GRUPO CABLE MOTOR 1F 115V IZQ.	1			X		
2	EAA0371G80A	1PH 230V MOTOR CABLE ASM	GROUPE MOTEUR CABLE 1F 230V	GRUPO MOTOR CABLE 1F 230V	1	C		X		
2	EAA0371G81A	3PH 200V 2SPEED MOTOR CABLE ASM	GR. MOTEUR CABLE 3F 200V 2VIT.	GRUPO MOTOR CABLE 3F 200V 2VELOC.	1			X		
2	EAA0371G82A	3PH 230V 2SPEED MOTOR CABLE ASM	GR. MOTEUR CABLE 3F 230V 2VIT.	GRUPO MOTOR CABLE 3F 230V 2VELOC.	1			X		
2	EAA0371G83A	3PH 400V 2SPEED MOTOR CABLE ASM	GR. MOTEUR CABLE 3F 400V 2VIT.	GRUPO MOTOR CABLE 3F 400 V 2VELOC.	1			X		
2	EAA0371G84A	3PH 230V MOTOR CABLE ASM	GROUPE MOTEUR CABLE 3F 230V	GRUPO MOTOR CABLE 3F 230V	1	G		X		
2	EAA0371G85A	3PH 400V MOTOR CABLE ASM	GROUPE MOTEUR CABLE 3F 400V	GRUPO MOTOR CABLE 3F 400V	1	H		X		
2	EAA0534G62A	1 PHASE US MOTOR CABLE ASSEMBLY	GROUPE CABLE MOTEUR 1F US	GRUPO CABLE MOTOR 1F US	1	115V		X		
3	EAA0350G22A	MOTOR SINGLE PHASE 230-50Hz-HP1	MOTEUR MONOPHASE 230-1-50-HP1	MOTOR MONOFASICO 230V 50Hz-HP1	1	C		X		
3	2-60266A	MOTOR 0.8/1.1KW 3PH 2/4P 200V 50HZ	MOTEUR 0.8/1.1KW 3F 2/4P 200V 50HZ	MOTOR 0.8/1.1KW 3F 2/4P 200V 50HZ	1	D		X		
3	2-60366A	MOTOR 0.8/1.1KW 3PH 2/4P 400V 50HZ	MOTEUR 0.8/1.1KW 3F 2/4P 400V 50HZ	MOTOR 0.8/1.1KW 3F 2/4P 400V 50HZ	1	F		X		
3	2-60466A	MOTOR 0.8/1.1KW 3PH 2/4P 230V 50HZ	MOTEUR 0.8/1.1KW 3F 2/4P 230V 50HZ	MOTOR 0.8/1.1KW 3F 2/4P 230V 50HZ	1	E		X		
3	2-99966A	MOTOR 1PHASE 115V 60Hz 1HP	MOTEUR MONOPHASE 115V 60Hz HP1	MOTOR MONOFASICO 115V 60Hz HP1	1			X		
3	2-53066A	MOTOR 3PH 0,75 kW 1PS 220-380V-50Hz	MOTEUR 3ph 220-380V-50Hz-Hp1	MOTOR 3ph 220-380V-50Hz-Hp1	1	G - H		X		
4	EAW0277G10A	1PH 115V MOTOR CABLE	CABLE MOTEUR 1F 115VAC	CABLE MOTOR 1F 115VCA	1			X		
4	EAW0277G12A	1PH 230V MOTOR CABLE	CABLE MOTEUR 1F 230V	CABLE MOTOR 1F 230V	1	C			X	

**A** = available - disponible - disponible

**B** = on request - sur demande - a petición

**C** = suggested - suggeré - sugerido

Pos	Code	Designation	Désignation	Designación	N.	Note	Nota	A	B	C
4	EAW0277G14A	3PH 200V 2SPEED MOTOR CABLE	CABLE MOTEUR 3F 200V 2VIT.	CABLE MOTOR 3F 200V 2VELOC.	1	D			X	
4	EAW0277G16A	3PH 230V 2SPEED MOTOR CABLE	CABLE MOTEUR 3F 230V 2VIT.	CABLE MOTOR 3F 230V 2VELOC.	1	E			X	
4	EAW0277G18A	3PH 400V 2SPEED MOTOR CABLE	CABLE MOTEUR 3F 400V 2VIT.	CABLE MOTOR 3F 400V 2VELOC.	1	F			X	
4	EAW0277G20A	3PH 230V MOTOR CABLE	CABLE MOTEUR 3F 230V	CABLE MOTOR 3F 230V	1	G			X	
4	EAW0277G22A	3PH 400V MOTOR CABLE	CABLE MOTEUR 3F 400V	CABLE MOTOR 3F 400V	1	H			X	
4	EAW0277G38A	115VAC MOTOR CABLE (ORANGE)	CABLE MOTEUR 115VAC (ORANGE)	CABLE MOTOR 115VCA (NARANJA)	1			X		
5	EAM0043G99A	PULLEY, DOUBLE	POULIE DOUBLE	POLEA DOBLE	1			X		
5	EAM0116G32A	PULLEY DP=2" HOLE D.5/8"	POULIE MOTEUR DP=2" - ORIF. D.5/8"	POLEA MOTOR DP=2" - ORIFICIO D.5/8"	1			X		
6	1-50410A	SCREW STEI 6X12 12K BR	VIS FHc	TORNILLO STEI	1			X		
7	1-48910A	SCREW	VIS	TORNILLO	1			X		
8	EAS2109G06A	SUPPORT- MOTOR	SUPPORT MOTEUR	SOPORTE MOTOR	1			X		
8	EAS2131G28A	MOTOR SUPPORT	SUPPORT MOTEUR	SOPORTE MOTOR	1			X		
9	EAK0341G09A	REDUCTION UNIT PULLEY KIT	KIT POULIE REDUCTEUR	KIT POLEA REDUCTOR	1			X		
9	EAK0341G45A	PULLEY KIT	KIT DE POULIE	KIT DE POLEA	1	Dp 160mm		X		
12	1-1572	KEY-10x8x45	LANGUETTE	LENGUETA	1				X	
13	EAC0099G95A	BELT A27	COURROIE A27	CORREA A27	1			X		
13	EAC0078G58A	V BELT, A-26	COURROIE A-26	CORREA A-26	1			X		X

**A** = available - disponible - disponible

**B** = on request - sur demande - a petición

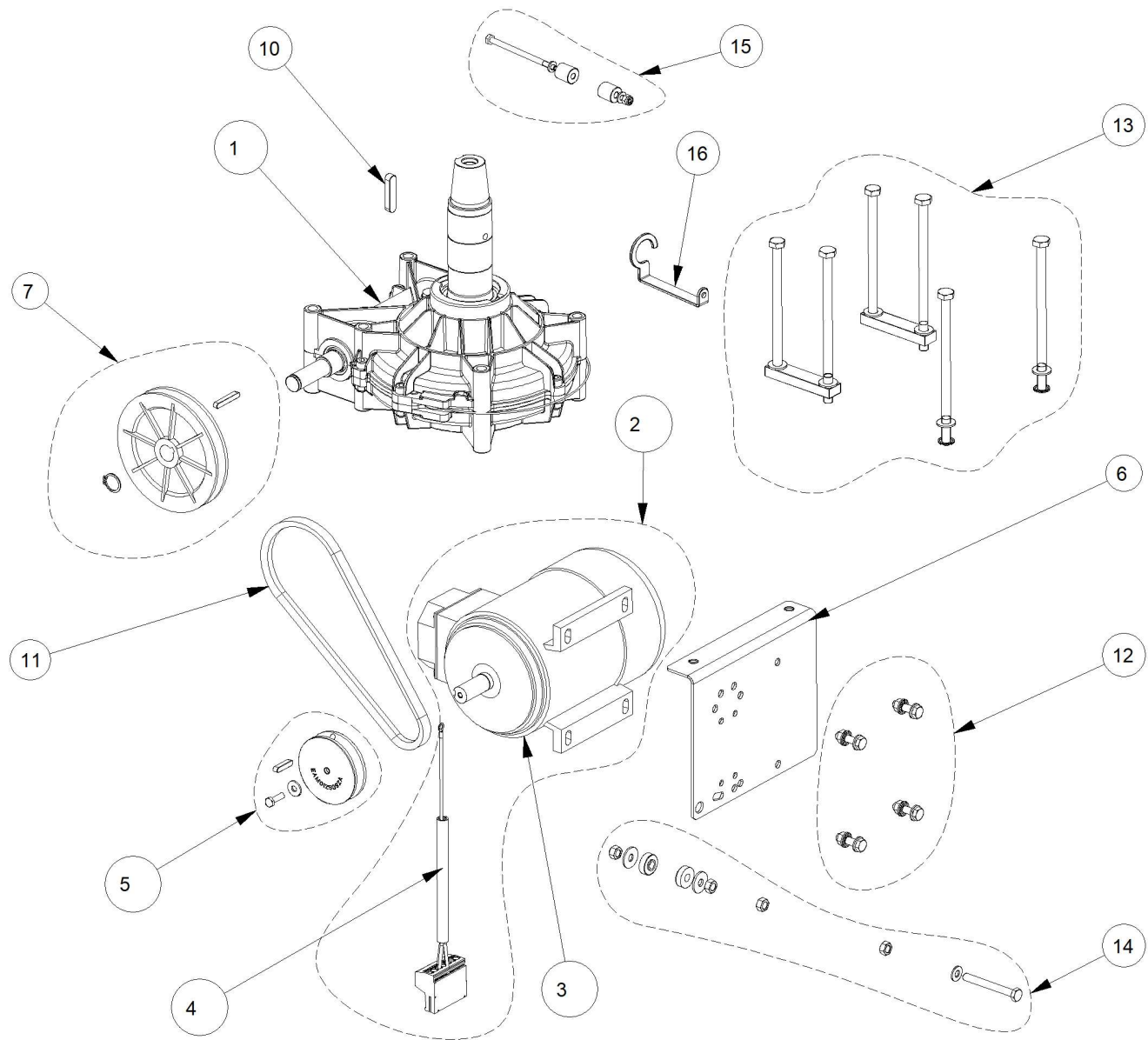
**C** = suggested - sugeré - sugerido

Pos	Code	Designation	Désignation	Designación	N.	Note	Nota	A	B	C
13	EAC0100G52A	BELT A29	COURROIE A29	CORREA A29	1			X		X
14	EAK0279G63A	SCREWS KIT FOR 1PHASE MOTOR	KIT VIS MOTEUR MONOPHASE	KIT TORNILLOS MOTOR MONOFÁSICO	1			X		
14	EAK0279G64A	SCREWS KIT FOR MOTOR	KIT VIS MOTEUR	KIT TORNILLOS MOTOR	1			X		
15	EAK0279G65A	SCREWS KIT FOR GEARBOX	KIT VIS REDUCTEUR	KIT TORNILLOS REDUCTOR	1			X		
16	EAK0279G66A	BELT TIGHTENER KIT	KIT TENDEUR-COURROIE	KIT TENSOR DE CORREA	1			X		
17	EAK0279G67A	ANTIROTATION KIT	KIT ANTIROTATION	KIT ANTIRROTACIÓN	1			X		
18	EAS2140G91A	SUPPORT FOR REV. MANIFOLD HOSES	SOUTIEN POUR LES TUYAUX RENOUEVELABLE	APOYO A GIRATORIO MANGUERAS COLECTO	1					X

**A** = available - disponible - disponible

**B** = on request - sur demande - a petición

**C** = suggested - suggeré - sugerido



Pos	Code	Designation	Désignation	Designación	N.	Note	Nota	A	B	C
1	EAA0457G27A	GEARBOX	REDUCTEUR	REDUCTOR	1			X		
2	EAA0371G80A	1PH 230V MOTOR CABLE ASM	GROUPE MOTEUR CABLE 1F 230V	GRUPO MOTOR CABLE 1F 230V	1	C		X		
2	EAA0371G84A	3PH 230V MOTOR CABLE ASM	GROUPE MOTEUR CABLE 3F 230V	GRUPO MOTOR CABLE 3F 230V	1	G		X		
2	EAA0371G85A	3PH 400V MOTOR CABLE ASM	GROUPE MOTEUR CABLE 3F 400V	GRUPO MOTOR CABLE 3F 400V	1	H		X		
2	EAA0534G62A	1 PHASE US MOTOR CABLE ASSEMBLY	GROUPE CABLE MOTEUR 1F US	GRUPO CABLE MOTOR 1F US	1	115V		X		
3	EAA0350G22A	MOTOR SINGLE PHASE 230-50Hz-HP1	MOTEUR MONOPHASE 230-1-50-HP1	MOTOR MONOFASICO 230V 50Hz-HP1	1	C		X		
3	2-60266A	MOTOR 0.8/1.1KW 3PH 2/4P 200V 50HZ	MOTEUR 0.8/1.1KW 3F 2/4P 200V 50HZ	MOTOR 0.8/1.1KW 3F 2/4P 200V 50HZ	1	D		X		
3	2-60366A	MOTOR 0.8/1.1KW 3PH 2/4P 400V 50HZ	MOTEUR 0.8/1.1KW 3F 2/4P 400V 50HZ	MOTOR 0.8/1.1KW 3F 2/4P 400V 50HZ	1	F		X		
3	2-60466A	MOTOR 0.8/1.1KW 3PH 2/4P 230V 50HZ	MOTEUR 0.8/1.1KW 3F 2/4P 230V 50HZ	MOTOR 0.8/1.1KW 3F 2/4P 230V 50HZ	1	E		X		
3	2-99966A	MOTOR 1PHASE 115V 60Hz 1HP	MOTEUR MONOPHASE 115V 60Hz HP1	MOTOR MONOFASICO 115V 60Hz HP1	1			X		
3	2-53066A	MOTOR 3PH 0,75 kW 1PS 220-380V-50Hz	MOTEUR 3ph 220-380V-50Hz-Hp1	MOTOR 3ph 220-380V-50Hz-Hp1	1	G - H		X		
4	EAW0277G10A	1PH 115V MOTOR CABLE	CABLE MOTEUR 1F 115VAC	CABLE MOTOR 1F 115VCA	1			X		
4	EAW0277G12A	1PH 230V MOTOR CABLE	CABLE MOTEUR 1F 230V	CABLE MOTOR 1F 230V	1	C			X	
4	EAW0277G14A	3PH 200V 2SPEED MOTOR CABLE	CABLE MOTEUR 3F 200V 2VIT.	CABLE MOTOR 3F 200V 2VELOC.	1	D			X	
4	EAW0277G16A	3PH 230V 2SPEED MOTOR CABLE	CABLE MOTEUR 3F 230V 2VIT.	CABLE MOTOR 3F 230V 2VELOC.	1	E			X	
4	EAW0277G18A	3PH 400V 2SPEED MOTOR CABLE	CABLE MOTEUR 3F 400V 2VIT.	CABLE MOTOR 3F 400V 2VELOC.	1	F			X	
4	EAW0277G20A	3PH 230V MOTOR CABLE	CABLE MOTEUR 3F 230V	CABLE MOTOR 3F 230V	1	G			X	

**A** = available - disponible - disponible

**B** = on request - sur demande - a petición

**C** = suggested - sugeré - sugerido

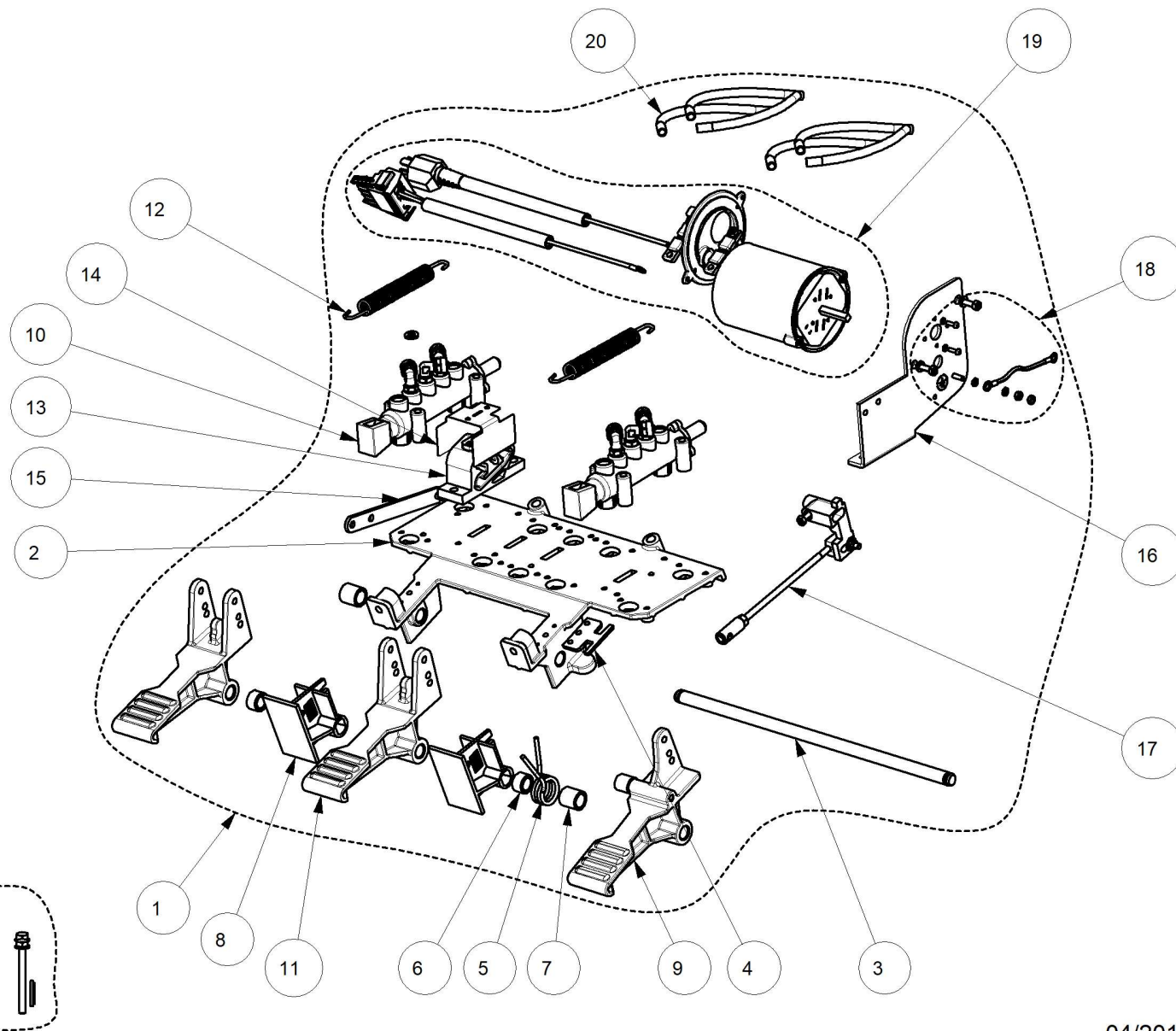
Pos	Code	Designation	Désignation	Designación	N.	Note	Nota	A	B	C
4	EAW0277G22A	3PH 400V MOTOR CABLE	CABLE MOTEUR 3F 400V	CABLE MOTOR 3F 400V	1	H			X	
4	EAW0277G38A	115VAC MOTOR CABLE (ORANGE)	CABLE MOTEUR 115VAC (ORANGE)	CABLE MOTOR 115VCA (NARANJA)	1			X		
5	EAK0330G25A	MOTOR D.70 PULLEY KIT	KIT POULIE MOTEUR D.70	KIT POLEA MOTOR D.70	1	C-D-E-F-G-H		X		
6	EAS2109G06A	SUPPORT- MOTOR	SUPPORT MOTEUR	SOPORTE MOTOR	1			X		
6	EAS2131G28A	MOTOR SUPPORT	SUPPORT MOTEUR	SOPORTE MOTOR	1			X		
7	EAK0341G09A	REDUCTION UNIT PULLEY KIT	KIT POULIE REDUCTEUR	KIT POLEA REDUCTOR	1			X		
7	EAK0341G45A	PULLEY KIT	KIT DE POULIE	KIT DE POLEA	1	Dp 160mm		X		
10	1-1572	KEY-10x8x45	LANGUETTE	LENGUETA	1				X	
11	EAC0099G95A	BELT A27	COURROIE A27	CORREA A27	1			X		
11	EAC0078G58A	V BELT, A-26	COURROIE A-26	CORREA A-26	1			X		X
11	EAC0100G52A	BELT A29	COURROIE A29	CORREA A29	1			X		X
12	EAK0279G63A	SCREWS KIT FOR 1PHASE MOTOR	KIT VIS MOTEUR MONOPHASE	KIT TORNILLOS MOTOR MONOFÁSICO	1			X		
12	EAK0279G64A	SCREWS KIT FOR MOTOR	KIT VIS MOTEUR	KIT TORNILLOS MOTOR	1			X		
13	EAK0279G65A	SCREWS KIT FOR GEARBOX	KIT VIS REDUCTEUR	KIT TORNILLOS REDUCTOR	1			X		
14	EAK0279G66A	BELT TIGHTENER KIT	KIT TENDEUR-COURROIE	KIT TENSOR DE CORREA	1			X		
15	EAK0279G67A	ANTIROTATION KIT	KIT ANTIROTATION	KIT ANTIRROTACIÓN	1			X		
16	EAS2140G91A	SUPPORT FOR REV. MANIFOLD HOSES	SOUTIEN POUR LES TUYAUX RENOUEVELABLE	APOYO A GIRATORIO MANGUERAS COLECTO	1				X	

**A** = available - disponible - disponible

**B** = on request - sur demande - a petición

**C** = suggested - sugeré - sugerido

EAZ0070G97A



04/2014

Pos	Code	Designation	Désignation	Designación	N.	Note	Nota	A	B	C
1	EAA0372G43A	FOOT PEDAL ASM 3P 1PH 115V (US)	GROUPE JEU DE 3P 1PH 115V (US)	JUEGO DE PEDALES 3P 1F 115V (US)	1	US		X		
1	EAA0372G44A	FOOT PEDAL ASM 3P 1PH 230V	GROUPE JEU DE 3P 1PH 230V	JUEGO DE PEDALES 3P 1F 230V	1			X		
1	EAA0372G45A	FOOT PEDAL ASM 3P 1PH 230V (UK)	GROUPE JEU DE 3P 1PH 230V (UK)	JUEGO DE PEDALES 3P 1F 230V (UK)	1	UK		X		
1	EAA0372G46A	FOOT PEDAL ASM 3 PEDALS 3PH 230V	GROUPE JEU DE 3P 3PH 230V	JUEGO DE PEDALES 3P 3F 230V	1			X		
1	EAA0372G47A	FOOT PEDAL ASM 3P 3PH 230V (CE)	GROUPE JEU DE 3P 3PH 230V (CE)	JUEGO DE PEDALES 3P 3F 230V (CE)	1	CE		X		
1	EAA0372G48A	FOOT PEDAL ASM 3P 3PH 230V (AUS)	GROUPE JEU DE 3P 3PH 230V (AUS)	JUEGO DE PEDALES 3P 3F 230V (AUS)	1	AUS		X		
1	EAA0372G49A	FOOT PEDAL ASM 3 PEDALS 3PH 400V	GROUPE JEU DE 3P 3PH 400V	JUEGO DE PEDALES 3P 3F 400V	1			X		
1	EAA0372G50A	FOOT PEDAL ASM 3P 3PH 400V (CE)	GROUPE JEU DE 3P 3PH 400V (CE)	JUEGO DE PEDALES 3P 3F 400V (CE)	1	CE		X		
1	EAA0372G51A	FOOT PEDAL ASM 3P 3PH 400V (AUS)	GROUPE JEU DE 3P 3PH 400V (AUS)	JUEGO DE PEDALES 4P 3F 400V (AUS)	1	AUS		X		
2	EAM0068G80A	PEDAL ASM SUPPORT - MACHINED	SUPPORT JEU PÉDALES - USINÉ	SOPORTE JUEGO DE PEDALES-MECANIZADO	1			X		
3	EAM0068G10A	SHAFT-HINGE, PEDAL	PIVOT PEDALES	EJE PEDALES	1			X		
4	EAM0070G32A	COMMUTATOR SPRING GUIDE	GUIDE RESSORT INVERSEUR	GUÍ MUELLE INVERTIDOR	1			X		
5	EAM0048G78A	SPRING, PEDAL SWITCH	RESSORT, PEDAL INTERRUPTEUR	MUELLE PEDAL INTERRUPTOR	1			X		
6	EAM0070G46A	SPACER L=11 mm	ENTRETOISE L=11 mm	DISTANCIADOR L=11 mm	2			X		
7	EAM0048G79A	BUSHING, CENTERING- SPRING	COQUILLE SIEGE RESSORT	CASQUILLO CENTRADO MUELLE	2			X		
8	EAC0096G11A	SPACER-PEDAL	ENTRETOISE PÉDALES	DISTANCIADOR PEDALES	2			X		
9	EAA0356G92A	RIGHT SWITCH FOOT PEDAL	PEDALE INTERRUPTEUR DROIT	PEDAL INTERRUPTOR DER.	1			X		

**A** = available - disponible - disponible

**B** = on request - sur demande - a petición

**C** = suggested - suggeré - sugerido

Pos	Code	Designation	Désignation	Designación	N.	Note	Nota	A	B	C
9	EAA0536G27A	RIGHT SWITCH FOOT PEDAL	PEDALE INTERRUPTEUR DROIT	PEDAL INTERRUPTOR DER.	1				X	
10	EAA0356G94A	BEAD BREAKER VALVE	VALVE DÉTALONNEUR	VÁLVULA DESTALONADOR	2			X		X
11	EAM0068G95A	STANDARD PEDAL - MACHINED	PEDAL STD.	PEDAL STD	2			X		
12	EAM0147G64A	SPRING RECALL PEDALS	RESSORT RETOUR PEDALES	MUELLE DE RETORNO PEDALES	2			X		
13	EAC0099G29A	CAM FOR PEDAL B	CAME PEDALE	LEVA PEDAL	1			X		
14	EAS2115G09A	PROTECTION SHEET FOR CAM	TOLE PROTECTION CAME	CHAPA PROTECCIÓN EXCÉNTRICO	1				X	
15	EAS2111G73A	ROD POSITIONER PEDAL	BIELLE POSITIONNEMENT PEDALE	BIELA DE POSICIONAMIENTO PEDAL	1			X		X
16	EAA0394G63A	1S SWITCH SUPPORT ASM	SUPPORT INTERRUPTEUR 1S D	GRUPO SOPORTE INTERRUPTOR 1S DX	1	RIGHT			X	
17	EAA0347G61A	ROD, REGISTER-REVERSING GEAR	BIELLE COMMANDE INVERSEUR	BIELA COMANDO INVERSOR	1			X		
18	EAK0279G40A	NUTS/BOLTS FOR SWITCH	KIT VIS FIXATION INVERSEUR	KIT TORNILLOS CONEXIÓN INTERRUPTOR	1			X		
19	EAA0394G30A	3 PH 230V SWITCH-CABLE ASSY W/O PLUG	GR. CABLE-INVERSEUR 3F 230V SANS BROCH	GR. CABLE-INVERSOR 3F 230V SIN PASADOR	1			X		
19	EAA0394G31A	3 PHASE 230V SWITCH-CABLE ASSY WITH PL	GR. CABLE-INVERSEUR TRIPHASE 230V AVEC	GR. CABLE-INVERSOR TRIFASE 230V CON PA	1			X		
19	EAA0394G32A	3 PH 230V SWITCH-CABLE ASSY PLUG AUS	GR. CABLE-INVERSEUR 3F 230V BROCHE AUS	GR. CABLE-INVERSOR 3F 230V PASADOR AUS	1	AUS		X		
19	EAA0394G33A	ASSY REVERSING SWITCH 3 PH 400V	GROUPE INVERSEUR 3PH 400V	GRUPO INVERSOR 3F. 400V	1			X		
19	EAA0394G34A	ASSY REV. SWITCH 400V 3PH CE PLUG	GROUPE INVERSEUR 3PH 400V (CE)	GRUPO INVERSOR 3F. 400V (CE)	1	CE		X		
19	EAA0394G35A	ASSY REV. SWITCH 3PH 400V AUS PLUG	GROUPE INVERSEUR 3PH 400V (AUS)	GRUPO INVERSOR 3F. 400V (AUS)	1	AUS		X		
19	EAA0394G36A	1 PHASE SWITCH-CABLE ASSY. DX US	GR. CABLE INVERSEUR MONOPHASE US DRO	GR. CABLE-INVERSOR MONOFASE US DERE	1	RIGHT		X		

**A** = available - disponible - disponible

**B** = on request - sur demande - a petición

**C** = suggested - suggeré - sugerido

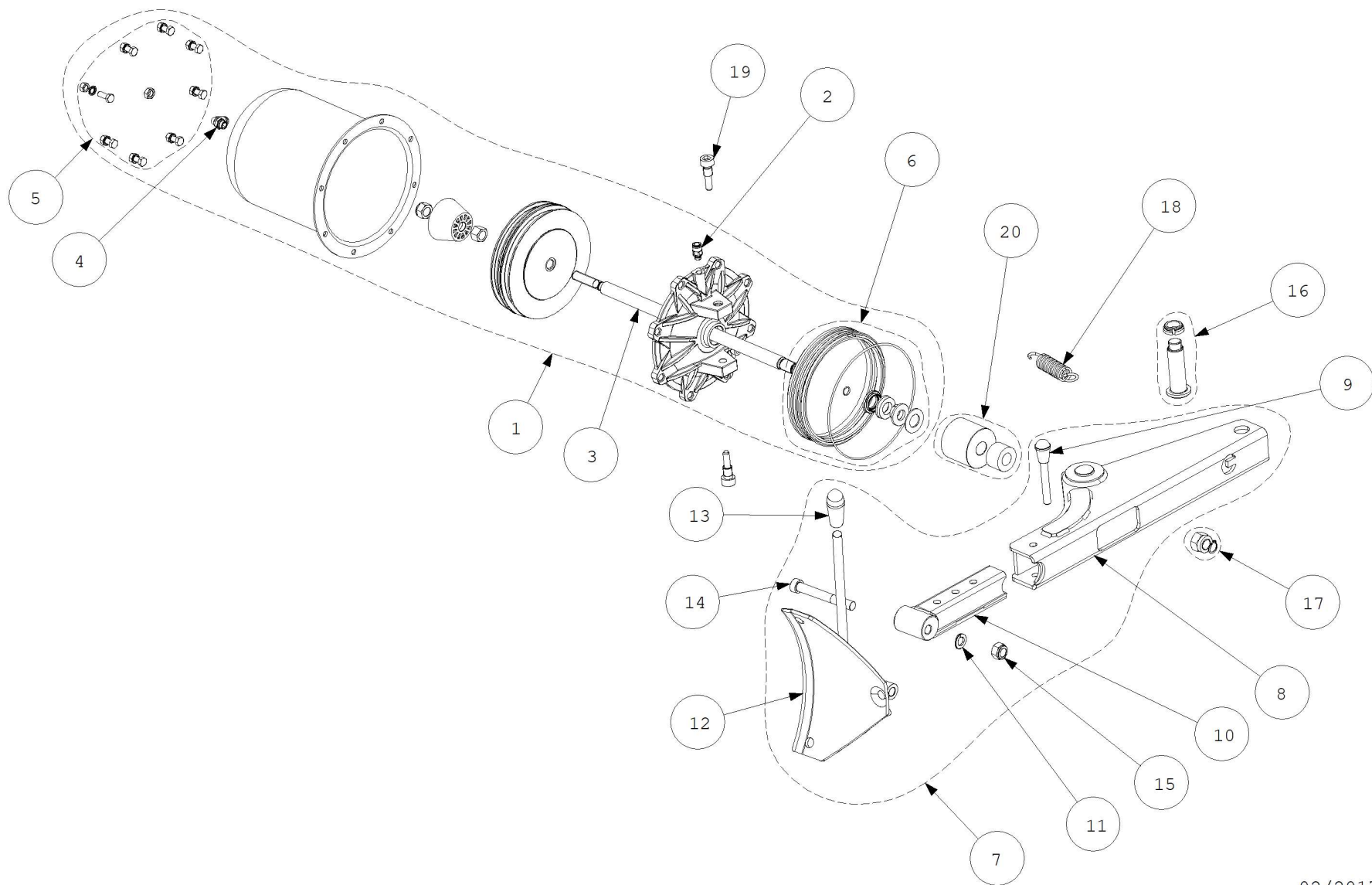
Pos	Code	Designation	Désignation	Designación	N.	Note	Nota	A	B	C
19	EAA0394G38A	1 PHASE SWITCH-CABLE ASSY WITHOUT PLL GR.	CABLE-INVERSEUR MONOPHA. SANS BRC	GR. CABLE-INVERSOR MONOFASE SIN PASAC	1			X		
19	EAA0394G39A	1 PH 230V SWITCH-CABLE ASSY UK PLUG	GR. CABLE-INVERSEUR MONOPH. BROCHE UI	GR. CABLE-INVERSOR MONOF. PASADOR UK	1	UK		X		
20	EAA0364G10A	HOSES KIT FOOT PEDAL ASM 3P	KIT TUBES PEDALIER 3P	KIT TUBOS PEDAL 3P	1				X	
21	EAK0279G39A	NUTS/SCREWS FOR FOOT PEDAL ASM	KIT VIS JEU PÉDALES	KIT TORNILLOS JUEGO DE PEDALES	1			X		

**A** = available - disponible - disponible

**B** = on request - sur demande - a petición

**C** = suggested - suggeré - sugerido

EAZ0033G69A.B



02/2017

Pos	Code	Designation	Désignation	Designación	N.	Note	Nota	A	B	C
1	EAA0377G31A	TC 22" BEAD BREAKER CYLINDER	VERIN DETALONNEUR TC 22"	CILINDRO DESTALONADOR TC 22"	1			X		
2	1-11379A	FITTING-ST 6X8 1/8	RACCORD 6x8 1/8	CONEXIÓN 6X8 1/8	1			X		
3	EAM0085G80A	ROD BEAD-BREAKER CYLINDER	TIGE CYLINDRE DETALONNEUR	VARILLA CILINDRO DESTALONADOR	1		DIN 137	X		
4	1-20179A	FITTING "L" 6X8	RACCORD	CONEXION RÁPIDA	1			X		
5	EAK0306G16A	SCREWS AND BOLTS FOR BEAD BREAKER C' KIT VIS FLASQUE VERIN DETAL.		KIT TORNILLOS BRIDA CIL. DESTAL.	1				X	
6	EAK0306G19A	SEALS FOR BEAD BREAKER CYL.	KIT GARNITURES VERIN DETAL.	KIT JUNTAS CIL. DESTAL.	1			X		X
7	EAA0338G44A	BEAD BREAKER EXTENSIBLE	DETALLONEUR EXTENSIBLE	DESTALONADORA EXTENSIBLE	1				X	
8	EAS2108G27A	ARM SUPPORT, BEAD-BREAKER	SUPPORT BRAS DETALONNEUR	SOPORTE BRAZO DESTALONADORA	1			X		
9	EAA0328G72A	PIN - LOCK	GOUPILLE DE REGLAGE	ESPINA DE REGLAJE	1			X		
10	EAS2087G90A	EXTENSION-ARM,B/BREAKER	RALLONGE BRAS DETALONNEUR	EXTENSION-BRAZO DESTALONADOR	1			X		
11	1-5246	WASHER 14MM	RONDELLE d.14	ARANDELA ELAST.OND.TIPO B D.14	2			X		
12	EAS2087G93A	BLADE, BEADBREAKER	PALETTE DETALONNEUR	PALETA DESTALONADOR	1			X		
13	EAC0078G04A	HANDLE-RUBBER	POIGNEE POUR LEVIER	MANIJA PARA PALANCA	1				X	
14	1-22609	SCREW TCEI M14X110 8.8	VIS CHC M14X110 8.8	TORNILLO TCEI M14X110 8.8	1			X		
15	1-10433	NUT-S.LOCK,LOW- M14	ECROU AUTOBLOCANT M 14	TUERCA M14 AUT.BAS.CL.6	1			X		
16	EAK0306G20A	FULCRUM KIT FOR BEAD BREAKER ARM	KIT PIVOT BRAS DETALONNEUR	KIT PERNO BRAZO DESTALONADOR	1			X		
17	EAK0306G23A	FIXING KIT FOR BEAD BREAKER ARM	KIT FIXATION BRAS DETALONNEUR	KIT FIJACIÓN BRAZO DESTALONADOR	1			X		

**A** = available - disponible - disponible

**B** = on request - sur demande - a petición

**C** = suggested - suggeré - sugerido

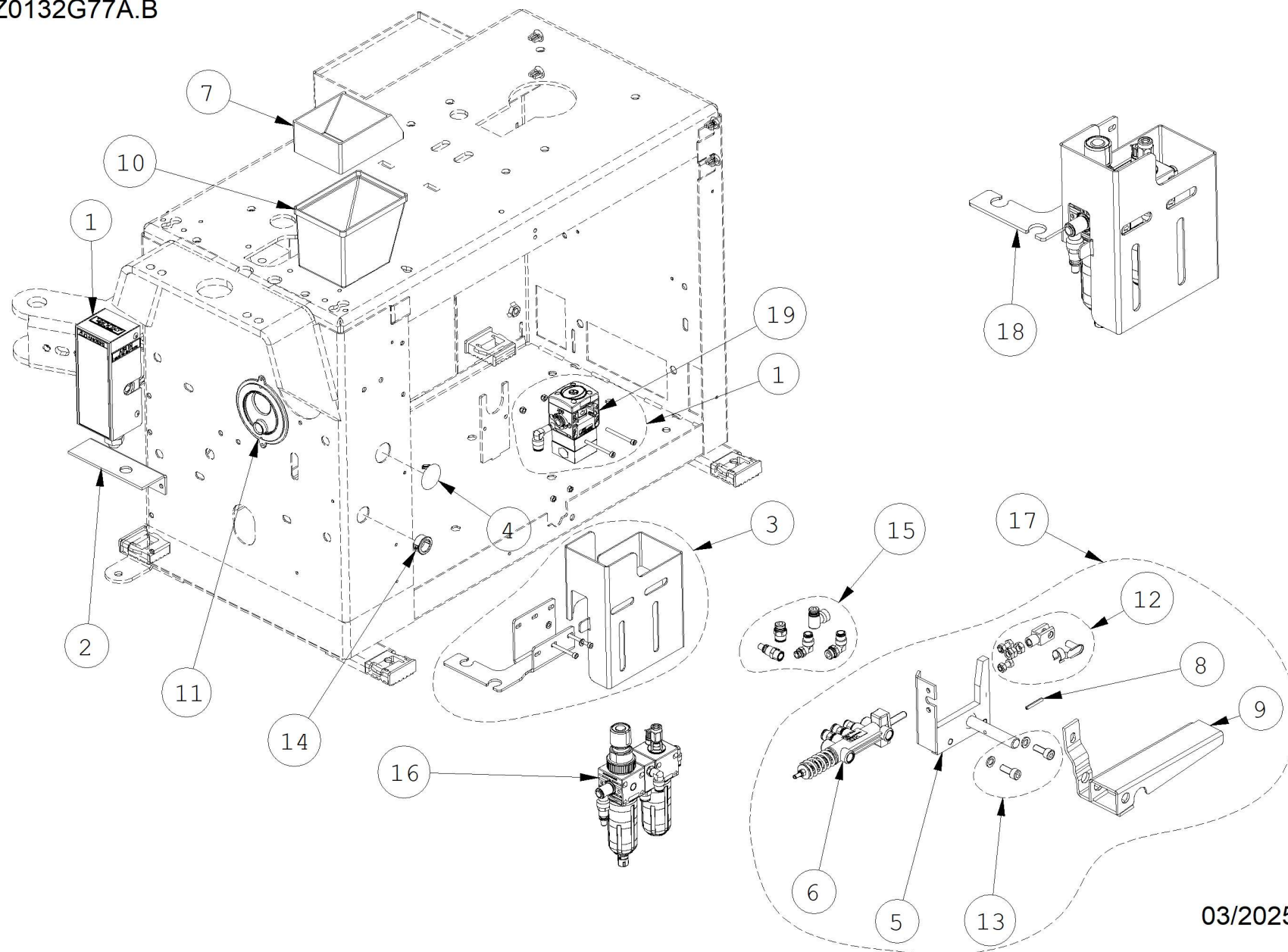
Pos	Code	Designation	Désignation	Designaciòn	N.	Note	Nota	A	B	C
18	EAM0067G69A	SPRING-RECALL ARM, BEAD BREAKER	RESSORT RAPPEL BRAS DETALONNEUR	MUELLE REGRESO BRAZO DESTAL.	1			X		
19	EAM0067G34A	BEAD BREAKER CYLINDER FITTING SCREW	FIS FIXATION VERIN DETALONNEUR	TORNILLO FIJACIÓN CIL.DESTALON.	2			X		
20	EAK0306G21A	END STROKE KIT FOR BEAD BREAKER ARM	KIT FIN DE COURSE POUR DETALONNEUR	KIT FINAL DE CARRERA DESTALONADORA	1	L=50mm		X		
20	EAK0341G78A	END STROKE KIT FOR BEAD BREAKER ARM	KIT FIN DE COURSE POUR DETALONNEUR	KIT FINAL DE CARRERA DESTALONADORA	1	L=75mm		X		

**A** = available - disponible - disponible

**B** = on request - sur demande - a petición

**C** = suggested - suggeré - sugerido

EAZ0132G77A.B



03/2025

Pos	Code	Designation	Désignation	Designación	N.	Note	Nota	A	B	C
1	EAA0558G71A	PRESSURE LIMITER VALVE	VANNE REDUCTEUR DE PRESSION	VÁLVULA LIMITADORA PRESIÓN	1	external version		X		X
1	EAK0375G82A	ASSY, INFLATION VALVE	KIT VANNE GONFLAGE GT	KIT VÁLVULA INFLADO	1			X		
2	EAS2090G13A	BRACKET-VALVE, INFLATOR	SIEGE VANNE GONFLEUR	ESTRIBO VALVULA INFLADOR	1			X		
3	EAK0330G49A	NA LUB. FILTER FIXING KIT	KIT DE FIXATION FILTRE	KIT FIJACIÓN FILTRO	1			X		
4	1-08676A	CAP, CLOSING	COUVERCLE FERMETURE	TAPÓN DE CIERRE	1				X	
5	EAS2134G52A	GT PEDAL SUPPORT	SUPPORT PEDALE	SOPORTE PEDAL	1			X		
6	EAA0329G75A	VALVE, BEAD INFLATING	SOUPAPE CONTROLE GONFLE PNEU S/CHAM	VALVULA MANDO INFLACION NEUM.S/CAMA	1			X		X
7	1-31581A	PLUG-VALVE, HOUSING	BAC SOUPAPE	TAPA PORTAVÁLVULAS	2			X		
8	1-6652	PIN - STRAIGHT SLOTTED 4X30	BROCHE ELASTIQUE	PASADOR ELÁSTICA	1			X		
9	EAS2068G87A	INFLATOR PEDAL CATAPHOR. BLK	PEDALE POMPE LAQUAGE HEPOXY NOIR	PEDAL HINCHADOR TUBEL.NEGRO	1			X		
10	8-03129A	BOX-GREASE	BAC GRAISSE	CONTENEDOR PARA GRASA	2			X		
11	EAC0100G22A	CABLE PROTECTION	PROTECTION CÂBLES	PROTECCIÓN CABLES	1				X	
12	EAK0306G32A	SCREWS AND BOLTS FOR GT VALVE	KIT VIS SOUPAPE GT	KIT TORNILLOS VÁLVULA GT	1			X		
13	EAK0306G33A	SCREWS AND BOLTS FOR GT PEDAL	KIT VIS PEDALE GT	KIT TORNILLOS PEDAL GT	1			X		
14	8-11616A	SNAP BUSHING Øe 22.2mm - Øi 17.5mm	DOUILLE Øe 22.2mm - Øi 17.5mm	CASQUILLO	1			X		
15	EAK0315G99A	FITTINGS KIT FOR FILTER	KIT RACCORDS POUR FILTRE	KIT RACORES PARA FILTRO	1			X		X
16	EAA0439G90A	FILTER-PRESS.RED.-LUBRIC.ASSY+AIR IN L	GROUPE FILTRE RED. + LUBRIF AIR GAUCHE	GRUPO FILTRO RED. + LUBRIC. AIRE IZQ.	1				X	

**A** = available - disponible - disponible

**B** = on request - sur demande - a petición

**C** = suggested - suggeré - sugerido

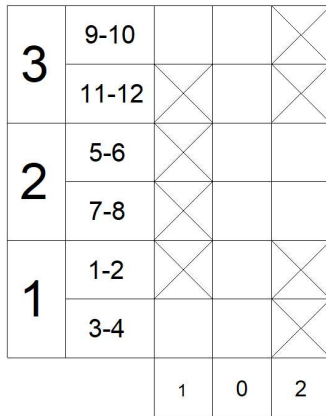
Pos	Code	Designation	Désignation	Designaciòn	N.	Note	Nota	A	B	C
17	EAA0384G14A	GROUP, BEAD INFLATING PEDAL	GROUPE PEDALE POMPE	GRUPO,PEDAL INFLADOR	1			X		x
18	EAA0489G30A	LUBRICATOR FILTER GROUP	GROUPE FILTRE LUBRIFICATEUR	GRUPO FILTRO LUBRIFICADOR NA	1				X	
19	1-41981A	QUICK INFLATION VALVE	CLAPET REDUCTEUR DE PRESSION	VÁLVULA LIMITADORA PRESIÓN	1			X		

**A** = available - disponible - disponible

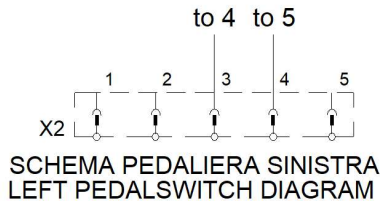
**B** = on request - sur demande - a petición

**C** = suggested - suggeré - sugerido

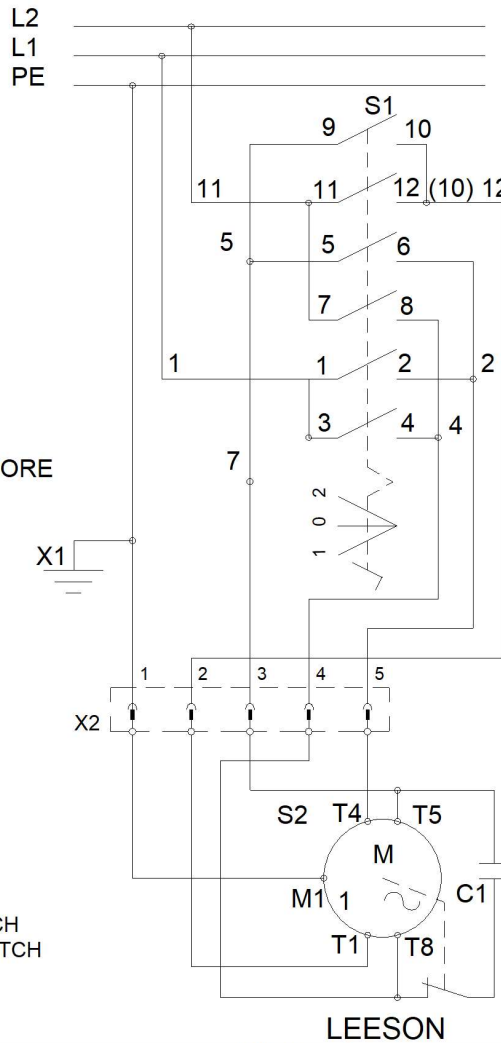
THE DATA, DRAWINGS, AND INFORMATION CONTAINED IN THIS DOCUMENT IS CONFIDENTIAL AND THE SOLE PROPERTY OF SNAP-ON, AND MAY NOT BE REPRODUCED, USED, OR DISCLOSED WITHOUT WRITTEN PERMISSION OF AN OFFICER OF SNAP-ON.		COPYRIGHT 1999	EEWH306AWD SHEET 1 OF 1
REV	CHANGES - MODIFICHE	DATE	NAME
E	Fixed motor wiring connections	2017.10.18	N. Castagnoli
D	Fixed switch connections	2012.03.30	N. Castagnoli
C	Added M.L. connector	2011.06.07	N. Castagnoli
B	Added Leeson diagram	2001-03-12	A. Pratzzoli



SCHEMA COLLEGAMENTO INVERTITORE  
INVERTER CONNECTION DIAGRAM

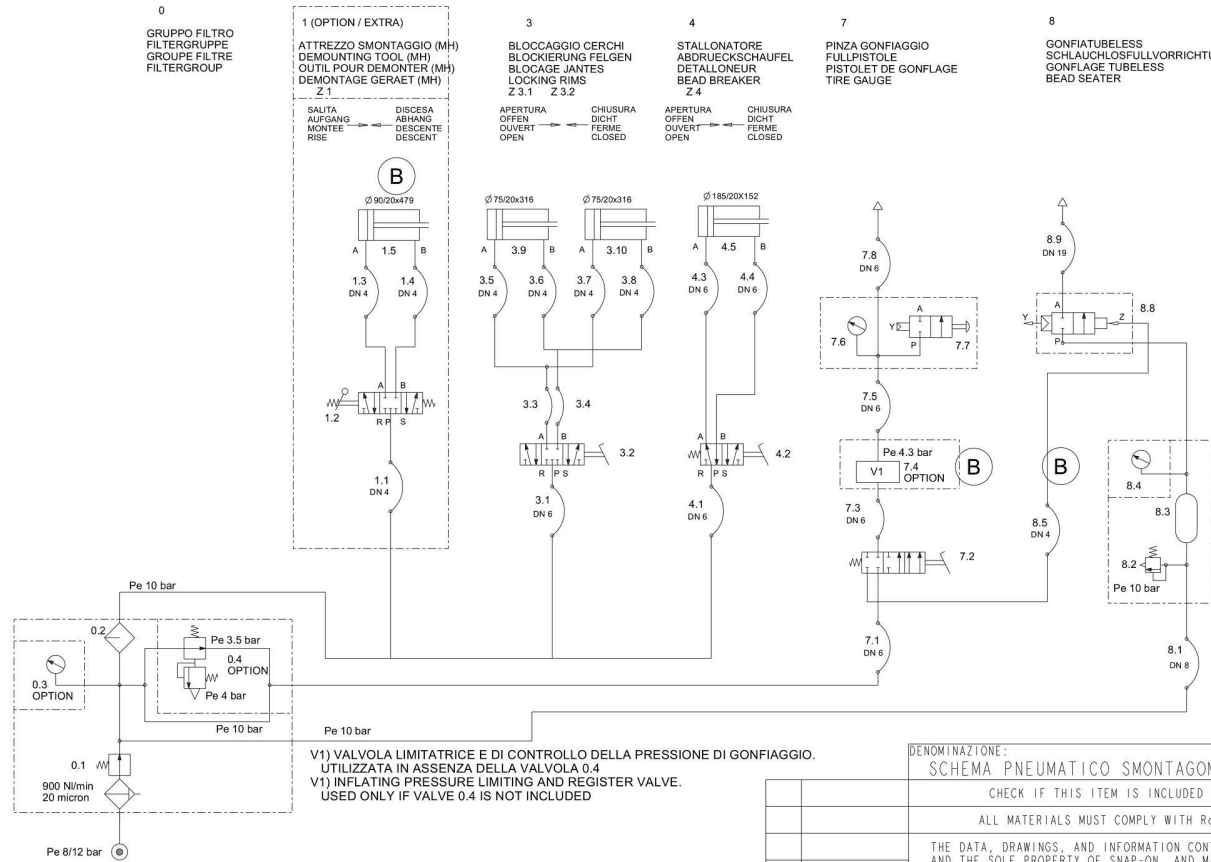


- C1 CONDENSATORE CAPACITOR
- S2 INT. CENTRIFUGO SPINNING SWITCH
- S1 INVERTITORE REVERSING SWITCH
- M1 MOTORE MOTOR
- X1 CARCASSA FRAME
- X2 CONNETTORE CONNECTOR



DENOMINAZIONE: SCHEMA ELETTRICO MOTORE MONOFASE AMERICANO		FAMIGLIA: 824	COD. GS: 0014449
UNLESS OTHERWISE SPECIFIED DIMENSIONS ARE IN MILLIMETERS GENERAL TOLERANCES OVER 0.5 TO 6.0 ± 0.1 OVER 6.0 TO 30 ± 0.2 OVER 30 TO 120 ± 0.3 OVER 120 TO UP ± 0.5 ANGULAR ± 1° HOLES ± 0.1 SHEET METAL ± 0.5 SURFACE: ISO 1302		MATERIAL	<i>Snap-on</i>
E 17G0415		FINISH	CORREGGIO, ITALY
D 12G0130		PROJ NO 3400	ONE PHASE
C 11G0146		DR FUSARI 1999-05-13	AMERICAN MOTOR
B		CK	ELECTRIC DIAGRAM
A		A4 APP	RELEASE REV E
REV PCN HISTORY	FIRST ANGLE PROJECTION	DWG	EEWH306AWD
		SUPERCEDES	SHEET 1 OF 1

REV	CHANGES - MODIFICHE	DATE	NAME
A	Rilascio per produzione Release for manufacturing	2018 Oct 02	M. Neri
B	VOCE 7.4 4.3 bar ERA 3.9 bar. VOCE 1.5 Ø90/20X479 REA Ø63/20X451. RIMOSSO VOCE 8.6 E 8.7 ITEM 7.4 4.3 bar WAS 3.9 bar. ITEM 1.5 Ø90/20X479 WAS Ø63/20X451. REMOVED ITEM 8.6 AND 8.7	2025 Mar 12	Hester.Liu



V1) VALVOLA LIMITATRICE E DI CONTROLLO DELLA PRESSIONE DI GONFIAGGIO.  
UTILIZZATA IN ASSENZA DELLA VALVOLA 0.4  
V1) INFLATING PRESSURE LIMITING AND REGISTER VALVE.  
USED ONLY IF VALVE 0.4 IS NOT INCLUDED

DENOMINAZIONE: SCHEMA PNEUMATICO SMONTAGOMME SWING		FAMIGLIA:	COD. GS: TEEWH003S
CHECK IF THIS ITEM IS INCLUDED IN THE "APPROVED SUPPLIER LIST" EA20137G69A.			
ALL MATERIALS MUST COMPLY WITH RoHS, REACH, CA PROP 65, AND CONFLICT MINERALS.			
THE DATA, DRAWINGS, AND INFORMATION CONTAINED IN THIS DOCUMENT IS CONFIDENTIAL AND THE SOLE PROPERTY OF SNAP-ON, AND MAY NOT BE REPRODUCED, USED, OR DISCLOSED WITHOUT WRITTEN PERMISSION OF AN OFFICER OF SNAP-ON.			COPYRIGHT 2025
UNLESS OTHERWISE SPECIFIED DIMENSIONS ARE IN MILLIMETERS GENERAL TOLERANCES		MATERIAL	
LASER CUT ISO 2768-mk		FINISH -	
MACHINING ISO 2768-mk		CORREGGIO, ITALY	
BENDING ISO 2768-mk		SCALE 1,000	
WELDING ISO 13920-AE		PROJECT NO DR M. Neri 2018 May 25	
PLASTIC (MOULD) DIN 16901		DATE CK M. Mariani 2018 May 25	
PLASTIC (ROTO) ± 1%		APP P. Sotgiu 2018 May 25	
CASTING ISO 8062-3 G8		QUALITY DOC N/A	
MICRO-CASTING VDG-P690 D2		SUPERCEDES N/A	
B 25G0035	A 18G0321	A3	RELEASE REV B
I 18G058P	REV PCN HISTORY	FIRST ANGLE PROJECTION	TEEWH003S
			SHEET 1 OF 2

8.9	1	TUBO FLESSIBILE	SCHLAUCH	TUYAU FLEXIBLE	FLEXIBLE HOSE	MANULI
8.8	1	VALVOLA A COMANDO PNEUMATICO	VENTIL MIT PNEUM. STEUERUNG	VANNE A COMMANDE PNEUMATIQUE	VALVE WITH PNEUMATIC DRIVE	KPM / AUTEL
8.5	1	TUBO FLESSIBILE	SCHLAUCH	TUYAU FLEXIBLE	FLEXIBLE HOSE	MAZZER
8.4	1	MANOMETRO	MANOMETER	MANOMETRE	MANOMETER	AIREX
8.3	1	SERBATOIO	TANK	RESRVOIR	TANK	Snap-on / FABBRI
8.2	1	VALVOLA DI SICUREZZA	SICHERHEITSENTIL	VANNE DE SICURETE	SAFETY VALVE	STIMA
8.1	1	TUBO FLESSIBILE	SCHLAUCH	TUYAU FLEXIBLE	FLEXIBLE HOSE	MAZZER
7.8	1	TUBO FLESSIBILE	SCHLAUCH	TUYAU FLEXIBLE	FLEXIBLE HOSE	MANULI
7.7	1	VALVOLA A 2 VIE	ZWEISEITIGE VENTIL	VANNE A 2 VOIES	TWOWAY VALVE	Snap-on
7.6	1	MANOMETRO	MANOMETER	MANOMETRE	MANOMETER	VIKA
7.5	1	TUBO FLESSIBILE	SCHLAUCH	TUYAU FLEXIBLE	FLEXIBLE HOSE	MAZZER
7.4	1	AIR CONTROL	AIR CONTROL	AIR CONTROL	AIR CONTROL	Aircomp
7.3	1	TUBO FLESSIBILE	SCHLAUCH	TUYAU FLEXIBLE	FLEXIBLE HOSE	MAZZER
7.2	1	VALVOLA A 4 VIE	VIERSEITIGE VENTIL	VANNE A 4 VOIES	FOURWAY VALVE	Snap-on
7.1	1	TUBO FLESSIBILE	SCHLAUCH	TUYAU FLEXIBLE	FLEXIBLE HOSE	MAZZER
4.5	1	CILINDRO A DOPPIO EFFETTO	DOPPELTWIRKENDER ZYLINDER	VERIN A DOUBLE EFFET	DOUBLE EFFECT CYLINDER	Snap-on
4.4	1	TUBO FLESSIBILE	SCHLAUCH	TUYAU FLEXIBLE	FLEXIBLE HOSE	MAZZER
4.3	1	TUBO FLESSIBILE	SCHLAUCH	TUYAU FLEXIBLE	FLEXIBLE HOSE	MAZZER
4.2	1	VALVOLA A 5 VIE	FUNFSEITIGE VENTIL	VANNE A 5 VOIES	FIVEWAY VALVE	Snap-on
4.1	1	TUBO FLESSIBILE	SCHLAUCH	TUYAU FLEXIBLE	FLEXIBLE HOSE	MAZZER
3.10	1	CILINDRO A DOPPIO EFFETTO	DOPPELTWIRKENDER ZYLINDER	VERIN A DOUBLE EFFET	DOUBLE EFFECT CYLINDER	Snap-on
3.9	1	CILINDRO A DOPPIO EFFETTO	DOPPELTWIRKENDER ZYLINDER	VERIN A DOUBLE EFFET	DOUBLE EFFECT CYLINDER	Snap-on
3.8	1	TUBO FLESSIBILE	SCHLAUCH	TUYAU FLEXIBLE	FLEXIBLE HOSE	MAZZER
3.7	1	TUBO FLESSIBILE	SCHLAUCH	TUYAU FLEXIBLE	FLEXIBLE HOSE	MAZZER
3.6	1	TUBO FLESSIBILE	SCHLAUCH	TUYAU FLEXIBLE	FLEXIBLE HOSE	MAZZER
3.5	1	TUBO FLESSIBILE	SCHLAUCH	TUYAU FLEXIBLE	FLEXIBLE HOSE	MAZZER
3.4	1	TUBO FLESSIBILE	SCHLAUCH	TUYAU FLEXIBLE	FLEXIBLE HOSE	MAZZER
3.3	1	TUBO FLESSIBILE	SCHLAUCH	TUYAU FLEXIBLE	FLEXIBLE HOSE	MAZZER
3.2	1	VALVOLA A 5 VIE	FUNFSEITIGE VENTIL	VANNE A 5 VOIES	FIVEWAY VALVE	Snap-on
3.1	1	TUBO FLESSIBILE	SCHLAUCH	TUYAU FLEXIBLE	FLEXIBLE HOSE	
1.5	1	CILINDRO A DOPPIO EFFETTO	DOPPELTWIRKENDER ZYLINDER	VERIN A DOUBLE EFFET	DOUBLE EFFECT CYLINDER	Snap-on
1.4	1	TUBO FLESSIBILE	SCHLAUCH	TUYAU FLEXIBLE	FLEXIBLE HOSE	MAZZER
1.3	1	TUBO FLESSIBILE	SCHLAUCH	TUYAU FLEXIBLE	FLEXIBLE HOSE	MAZZER
1.2	1	VALVOLA A 5 VIE	FUNFSEITIGE VENTIL	VANNE A 5 VOIES	FIVEWAY VALVE	STAMPOTECNICA
1.1	1	TUBO FLESSIBILE	SCHLAUCH	TUYAU FLEXIBLE	FLEXIBLE HOSE	MAZZER
0.4	1	RIDUTTORE + VALVOLA DI SICUREZZA	REDUKTOR + SICHERHEITSENTIL	REDUCTEUR + SOUPAPE DE SICURETE	REDUCER + SAFETY VALVE	STAMPOTECNICA
0.3	1	MANOMETRO	MANOMETER	MANOMETRE	MANOMETER	AIREX
0.2	1	LUBRIFICATORE	SCHMIERVORRICHTUNG	LUBRIFIANT	LUBRICATOR	STAMPOTECNICA
0.1	1	FILTRO + RIDUTTORE	FILTER + REDUKTOR	FILTRE + REDUCTEUR	FILTER + REDUCER	STAMPOTECNICA
<b>N.</b>	<b>Q.TA' Stuck Q.TE' Q.TY</b>	<b>DENOMINAZIONE</b>	<b>BENENNUNG</b>	<b>DESCRIPTION</b>	<b>DESCRIPTION</b>	<b>PRODUTTORE HERSTELLER PRODUCTEUR PRODUCER</b>

		PROJ NO. -	SCALE NO	Correggio (RE) - ITALY		
		DR Hester. Liu		PNEUMATIC DIAGRAM FOR SWING TIRE CHANGER	Releas e	REV B
		DATE 2025/03/13			TEEWH003S SHEET 2 OF 2	
B	25G0035	QUALITY DOC -				
RE V	PCN HISTORY	SUPERCEDES -				





**Notice:** The information contained in this document is subject to change without notice. **Snap-on Equipment** makes no warranty with regard to present documentation. **Snap-on Equipment** shall not be liable for errors contained herein or for incidental consequential damages in connection with furnishings, performance, or use of this material.

**Attention:** Les informations figurant dans le présent document peuvent faire l'objet de modifications sans préavis. **Snap-on** ne délivre aucune garantie sur le présent matériel. **Snap-on** décline toute responsabilité des erreurs que ces matériaux de documentation pourraient contenir et en cas de dommages accidentels ou indirects dérivant de leur fourniture, de leur interprétation et de leur utilisation.

**Nota:** La información aquí contenida está sujeta a cambios sin aviso. **Snap-on** no ofrece ninguna garantía sobre esta documentación. **Snap-on** no podrá ser considerado responsable por errores contenidos en esta publicación ni por daños consecuenciales incidentales en relación con el equipamiento, rendimiento o uso de este material.

---

• Manufacturing Facilities • Sites de production • Instalaciones de fabricación •

**Snap-on Equipment SrL · Via Per Carpi 33 - 42015 Correggio RE - Italy**  
**Snap-on Equipment · 309 Exchange Avenue Conway, Arkansas 72032**

• Technical alterations reserved - Refer to the data plates for effective manufacturing location • Modifications techniques réservées - Consulter les plaques signalétiques pour connaître le lieu de fabrication • Modificaciones técnicas reservadas – Consultar las placas de datos para la ubicación efectiva de la fabricación •