

JohnBean[®]

EHP System II-E CSA

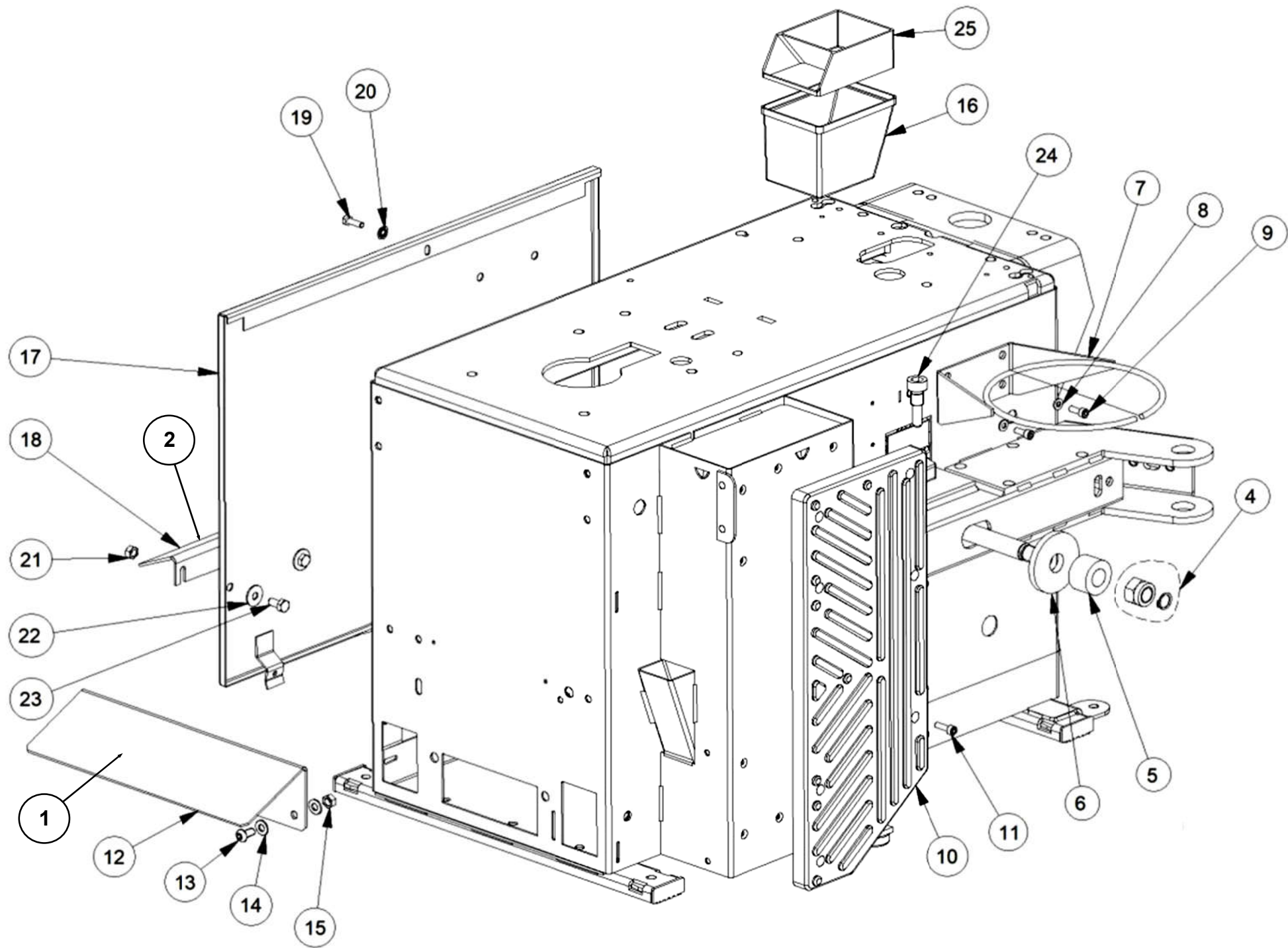
PARTS MANUAL



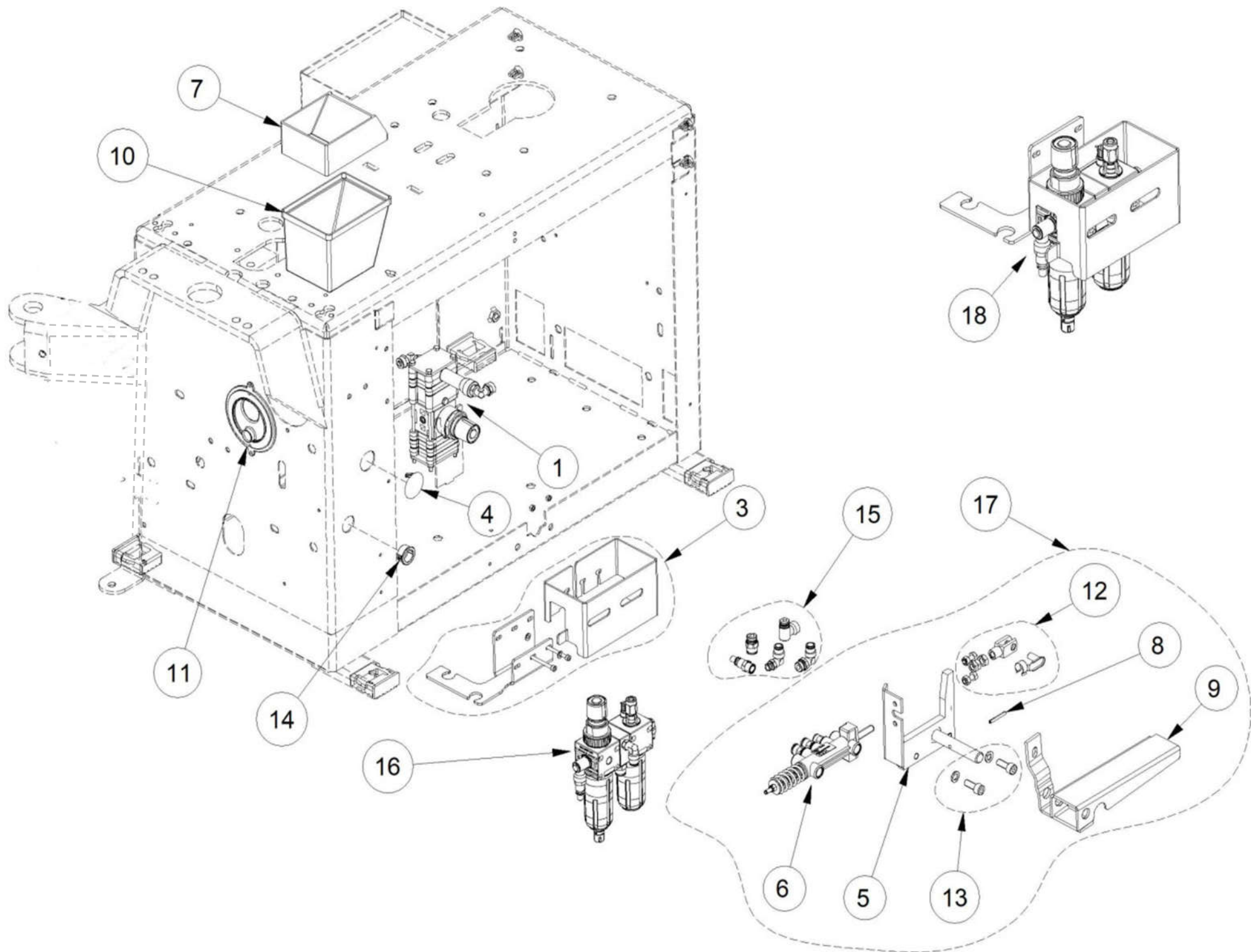
EEWH595AUA

**Swing Arm Tire Changer
With Adjustable Jaws**

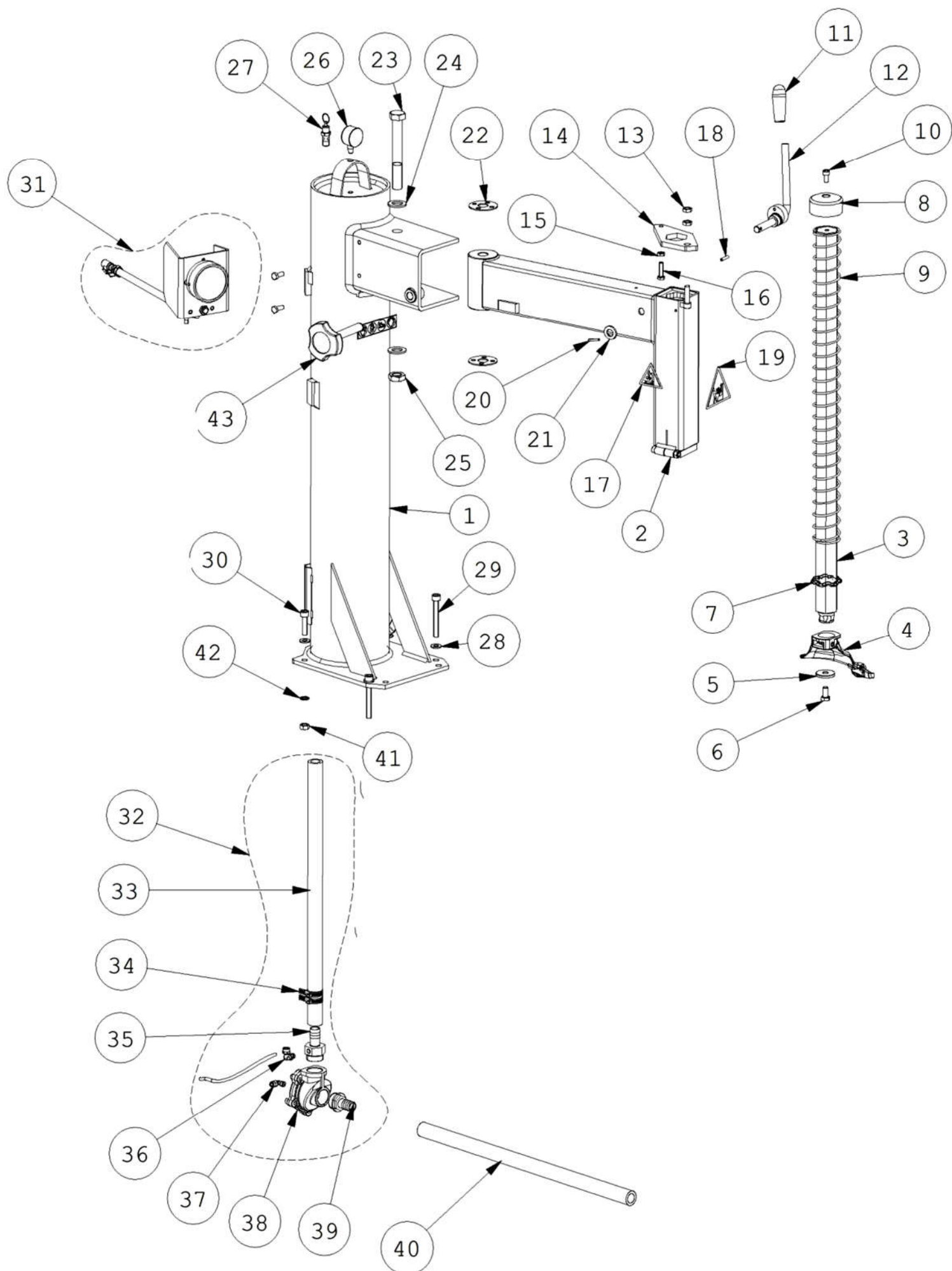
PART NUMBER	DESCRIPTIONS
EAL0343J76B	SERIAL LABEL DOCUMENT
ZEEWH595AU9	TECH DOC EHP SYST II-E CSA
EAA0270J76A	TC ASSY EEWH595AUA CSA
24212	PLACARD DANGER TC ENG SPANISH
EAL0467G92A	DECAL TC LEVER WARNING
EAA0489G44A	STANDARD ACCESSORIES
EAC0097G47A	WAVE TIRE MOUNTING LEVER
5-14126A	BRUSH TIRE LUBE APPLICATOR
8-03229A	LUBRICANT-TIRE MOUNTING 75N
EAA0350G07A	5PC PLS RIM PROT-4030319
EAK0329G86A	LGHTALLOY RIM PROTE FRONT ONLY
EAA0329G33B	MH310 PRO-6027702 (OPTIONAL)
EAK0237J22B	STABILITY FOOT KIT-NOT FOR SRV (OPTIONAL)



REF #	QTY	PART NUMBER	DESCRIPTION
1	1	EAL0412G13A	STICKERS PEDAL - 22672
2	1	EAL0413G34A	LABEL INFLATOR 22669
4	1	EAK0306G23A	FIXING KIT FOR BD BREAKING AR
5	1	EAC0097G51A	WASHER-SHOCK MID TIER TC 7564
6	1	EAC0097G54A	WASHER-SHOCK MID TIER TC 10491
7	1	EAA0349G76A	RING-BOX GREASE 4025460
8	2	1-9841	WASHER-PLAIN 6MM/SAME AS4-6641
9	2	1-16309	SCREW - SHCS M6 X 16MM
10	1	EAC0099G22A	SUPPORT BEAD BREAKER-20101
11	7	1-16409A	SCREW TCEI 6 X 20 8G
12	1	EAS2169G75AC	PEDAL PROTECTION RAL3000
13	2	1-17609A	SCREW-M8 X 16 SHC BLK 7205059
14	4	1-10041	WASHER, PLAIN M8
15	2	1-11733A	NUT-HEX M8 BLK
16	1	8-03129A	BOX GREASE (1806)
17	1	EAS2238G37A	SIDE PANEL WITH PROTECTION
18	1	EAS2115G83A	PROTECTOR PEDAL 11227
19	1	1-30901A2	SCREW-HHMS M6 X 20
20	1	1-1548	WASHER-6MM SP-PURCH TEXT
21	2	1-11733A	NUT-HEX M8 BLK
22	2	1-17841	WASHER-ZINC D8 X 24-7021102
23	2	1-32501A	SCREW-HHCS M8 X 20MM ST/FT
24	2	EAM0067G34A	SCREW-CYL FITTING MID TIER TC
25	1	1-31581A	PLUG VALVE HOUSING-1807

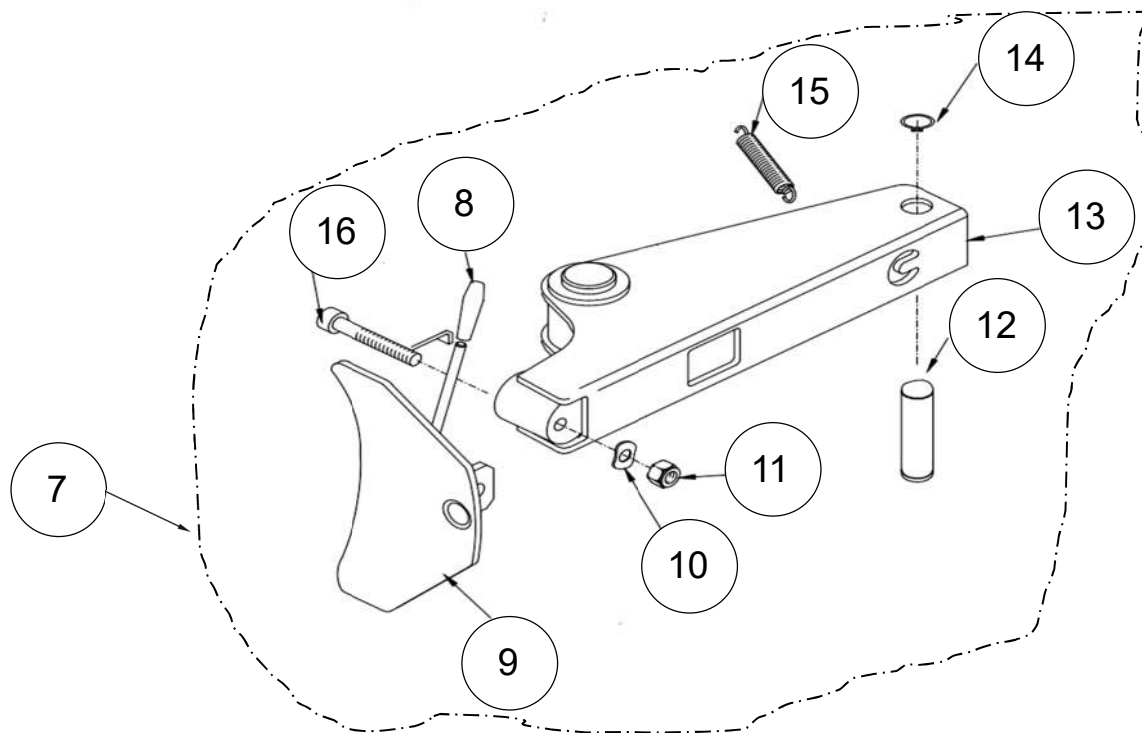
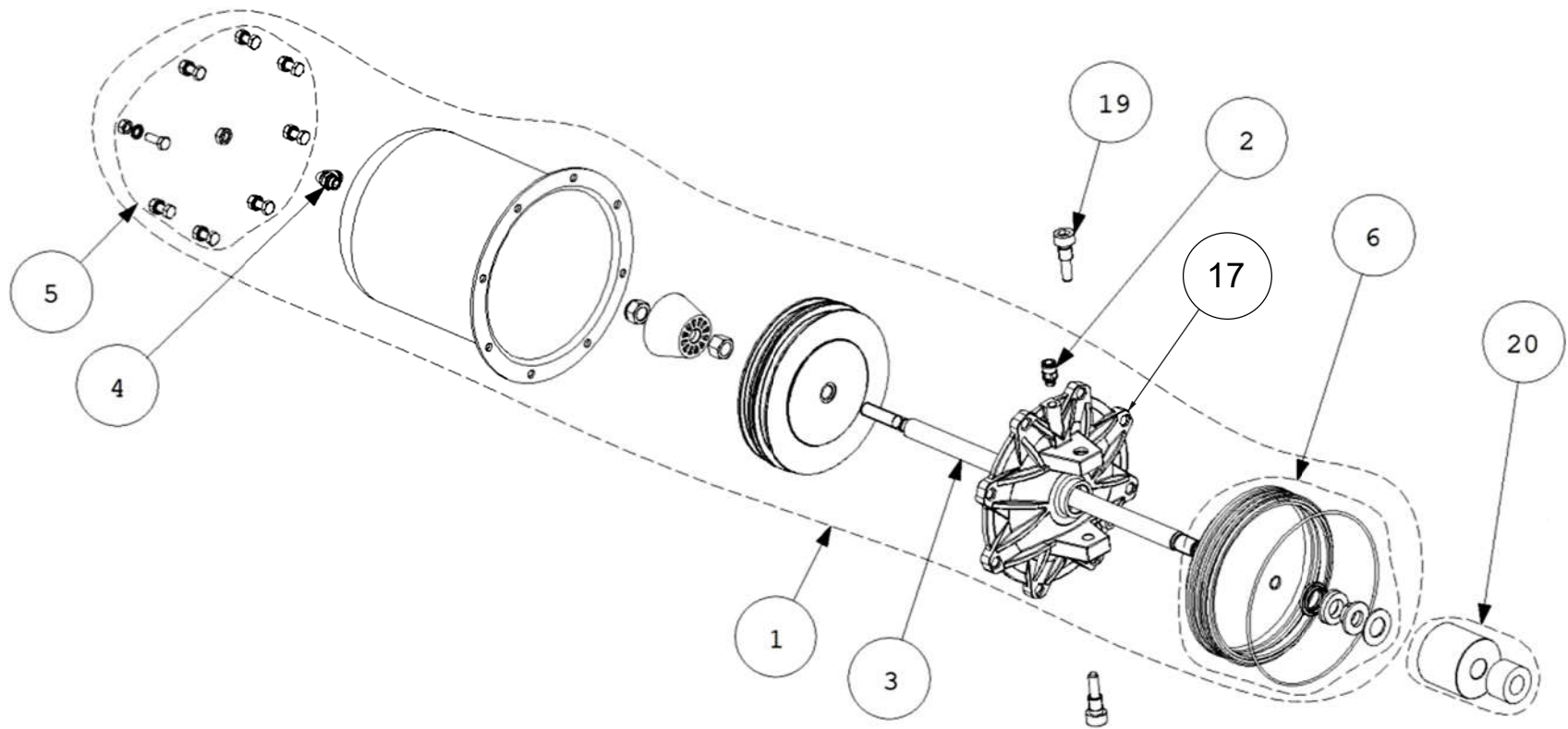


REF	QTY	PART NUMBER	DESCRIPTION
1	1	EAA0384G22A	PRESSURE LIMITING VALVE
3	1	EAS2201G16A	FILTER/LUBRICATOR BRACKET WITH HOSE HOUSING
	1	EAS2201G26A	LUBRICATOR FILTER PROTECTION
N/S	2	1-11433A	NUT, HEX M4
N/S	2	1-9641	PLAIN WASHER D4MM
N/S	2	1-14309A	SCREW, 4X50 8.8 BLK UNI 5931-67
N/S		EAL0467G90A	LABEL, INSTRUCTION TO DRAIN CONDENSATION
4	1	1-08676A	PLUG HOLE 26MM USE 1-1876
5	1	EAS2134G52A	GT PEDAL SUPPORT
6	1	ST4029115	VLVE,BD INFLATNG/B-EAA0329G75A
7	2	1-31581A	PLUG VALVE HOUSING-1807
8	1	ST7023119	PIN-STRAIGHT SLOTTED 4 X 30
9	1	ST4029114	INFLTR BD BLST PED EAS2068G87A
10	2	8-03129A	BOX GREASE (1806)
11	1	1-1876	PLUG HOLE 1.093-1.125
12	3	1-15933A	NUT-HEX 8M-1.25
	1	1-02655A	CLEVIS M8 UNI 1676 DIN 71752
	1	1-02955A	PIN-COTTER D.8 W/CLIP
13	2	1-11633A	NUT-M6 X 5.2 BLK
	2	1-1548	WASHER-6MM SP-PURCH
	2	ST7104119	SCREW 6X16 8G
14		N/A	NOT USED
15	1	EAK0315G99A	FITTINGS KIT FOR FILTER
16	1	EAA0439G90A	FILTER-PRESS.RED. LUBRIC.ASSY AIR IN LEFT
17	1	EAA0384G14A	QR GT PEDAL WITH ENDSTROKE
18	1	EAA0489G30A	LUBRICATOR FILTR GROUP

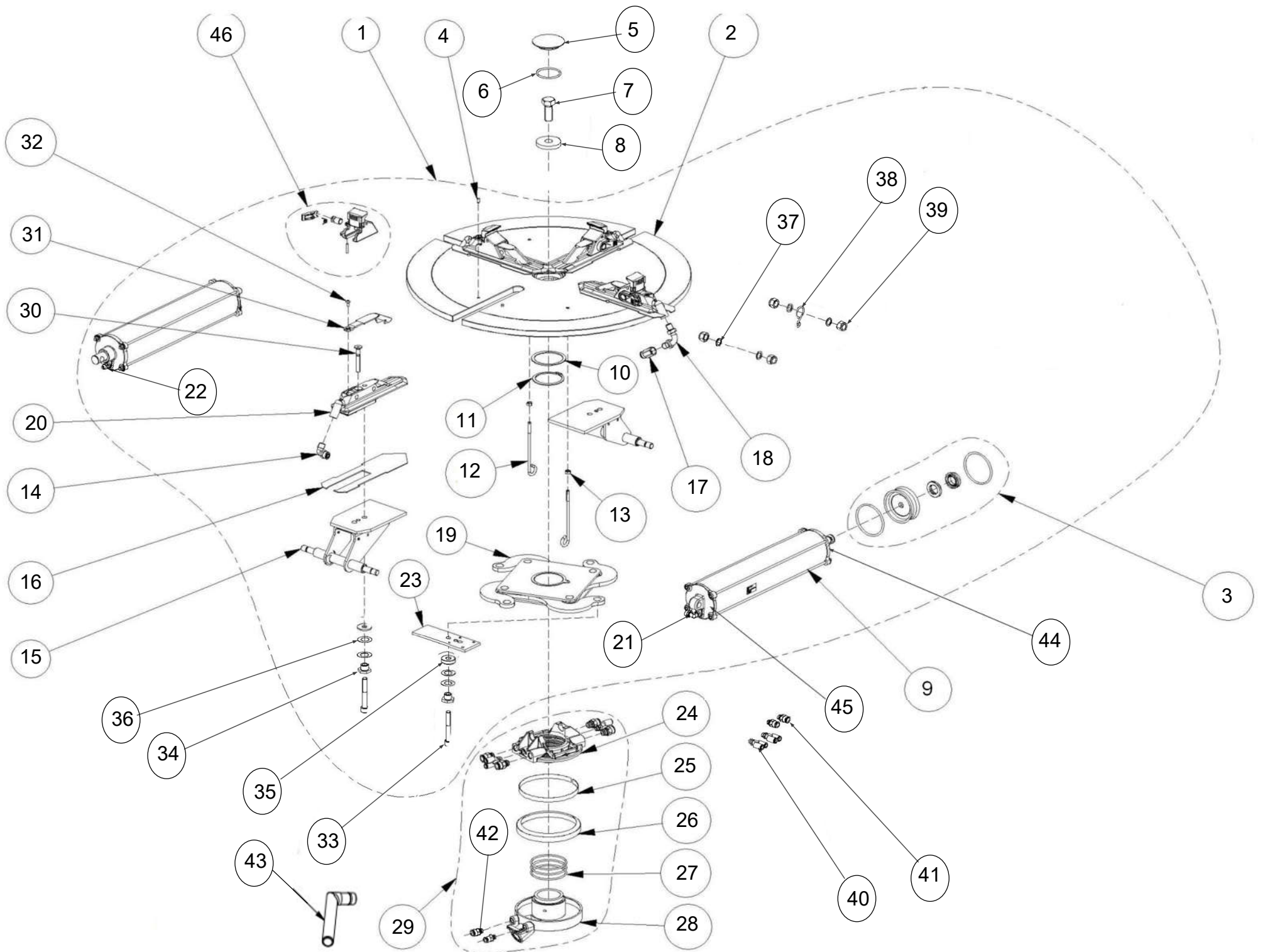


REF #	QTY	PART NUMBER	DESCRIPTION
1	1	4027401	TOWER
2	1	4025985	SWING ARM
3	1	24905	AXEL VERTICALE CH.38
4	1	EAA0329G95A	MOUNTING/DEMOUNTING TOOL
5	1	EAM0032G02A	WASHER- TOOL CLAMPING
6	1	1-34301A	SCREW HEX 10X20 8G
7	1	EAC0094G01A	SHOCK ABSORBER- ROD
8	1	EAM0140G92A	COVER FOR HEX BAR
9	1	25457	SPRING,RECALL-TOWER, VERTICAL
10	1	1-17609A	SCREW, 8X16 8.8 UNI5931-67
11	1	EAC0078G04A	HANDLE-RUBBER
12	1	EAS2108G36A	LEVER, REGISTER
13	2	1-19633B	NUT- M10 6S BLK UNI5589-65
14	1	EAS2153G46A	LEVER- NECKING
15	1	1-15933A	NUT M8 DIN 936 - UNI 5589
16	1	EAM0067G26A	SCREW, ADJUSTMENT- ROD
17	2	EAL0408G42A	STICKER DANGER
18	1	1-8152	SPLIT PIN 5X26
19	1	EAL0408G44A	DANGER LABEL
20	1	1-6452	PIN, STRAIGHT SLOTTED
21	1	1-10341	WASHER - D.14
22	2	EAM0067G29A	WASHER - ADJUSTMENT
23	1	EAM0067G25A	SCREW, SWING ARM SUPPORT
24	2	1-10641	WASHER
25	1	1-21633A	NUT
26	1	8-06120A	MANOMETER-RADIAL 0-16 D.40
27	1	1-31381A	VALVE, ASME SAFETY, 1/4" BSPT
28	8	1-10141A1	WASHER P.D.10
29	2	1-57309A	SCREW TCEI 10X80 8G ZINC.BIANC UNI 5931-

REF	QTY	PART NUMBER	DESCRIPTION
30	2	1-19409	SCREW TCEI 10X40
31	1	EAA0332G48A	ASSY,GAUGE-PRESSURE PSI / Kpa
32	1	EAA0351G06A	ASSY, VALVE- PNEUMATIC
33	1	27096	HOSE, AIR- HIGH PRESSURE
34	4	EAM0075G29A	CLIP, LOCKING-HOSE
35	1	15658	FITTING, RUB.HOLDER 1" LONG
36	1	1-17279A	FITTING "L" 6X8 1/8
37	1	1-17179A	ELBOW FITTING "L" 4X6 1/4"
38	1	1-29581A	VALVE,AIR-CONTROLLED
39	1	EAM0071G99A	FITTING , SUPPORT M1"-20
40	1	14121	HOSE, AIR
41	4	1-15433	NUT, M10 ZINC
42	4	1-3148	EXT.SHAKEPROOF d.10 DIN 6798/A
43	1	1-03512A	HANDLE WITH SCREW

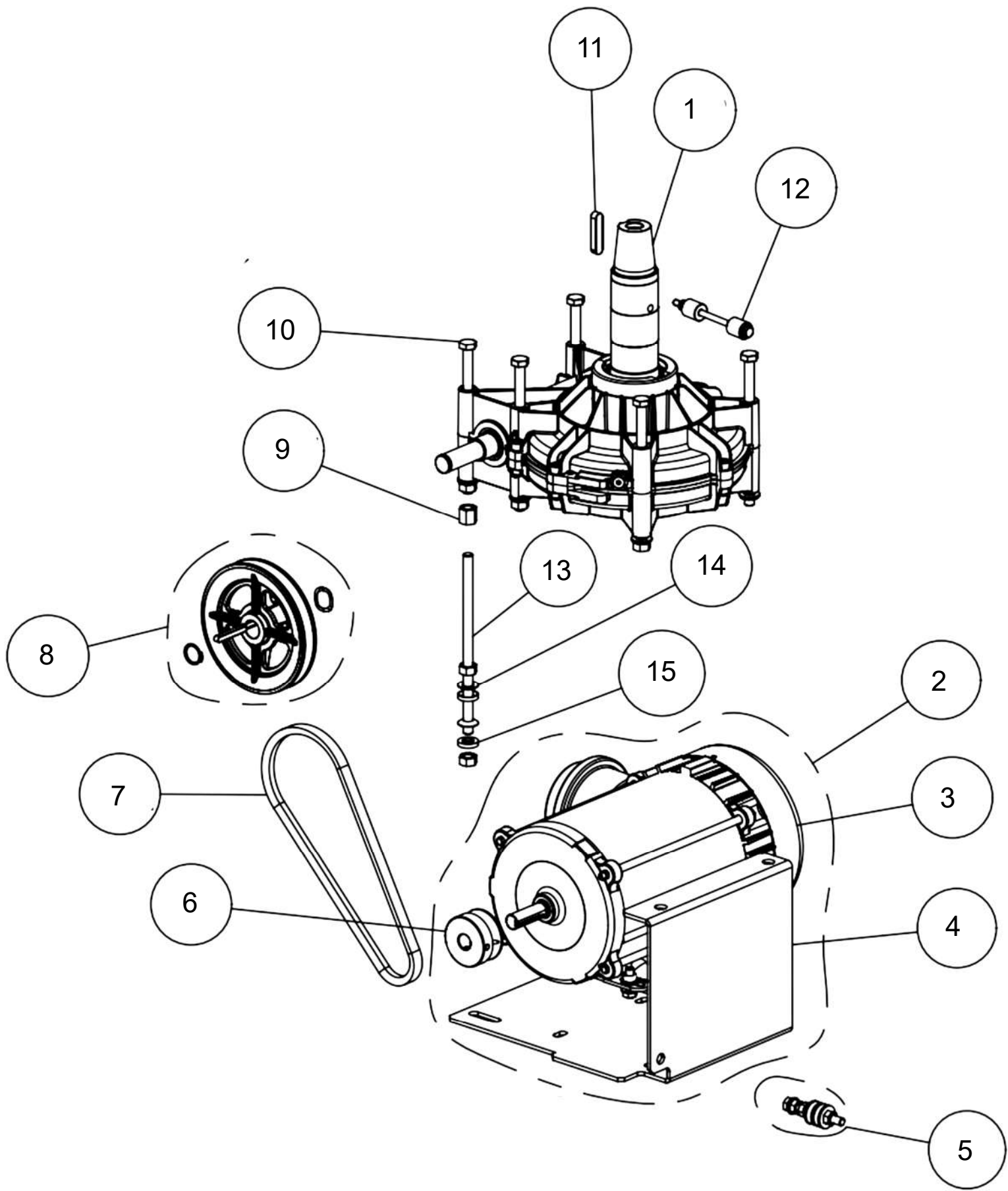


REF #	QTY	PART NUMBER	DESCRIPTION
1	1	EAA0329G49A	CYLINDER, BEAD BREAKER
2	1	ST0001924	Fitting-St 6 x 8 1/8
3	1	EAM0048G05A	ROD BEAD-BREAKER CYLINDER
4	1	1-20179A	FITTING "L" 6X8
5	1	EAK0306G16A	SCREWS AND BOLTS FOR BEAD BREAKER CYL. F
6	1	EAK0306G19A	SEALS FOR BEAD BREAKER CYL.
7	1	EAA0338G45A	BEAD BREAKER ARM ASSEMBLY
8	1	EAC0078G04A	HANDLE-RUBBER-6345
9	1	ST4021305	BLADE, BD. BREAKER-EAS2087G93A
10	1	ST7021329	WASHER 14MM
11	1	ST7020409	NUT-S LOCK LOW-M14(1-10433)
12	1	EAM0086G16A	PIN BEAD BREAKER ARM
13	1	ST4025141	ARM, BEAD BREAKER-EAS2108G28A
14	1	1-02138A	NUT RING M20 7044102
15	1	EAM0067G69A	SPRING-RECALL MID TIER TC 1229
16	1	1-22609	SCREW T CEI M1 4X110 8.8
17	1	ST0013409	END CAP-CYLINDER-EAC0078G36A
19	1	EAM0067G69A	SPRING-RECALL ARM, BEAD BREAKER
20	1	EAM0067G33A	WASHER,SUPPORT-BEAD BREAKER
20	1	EAC0097G54A	WASHER-SHOCK MID TIER TC 10491

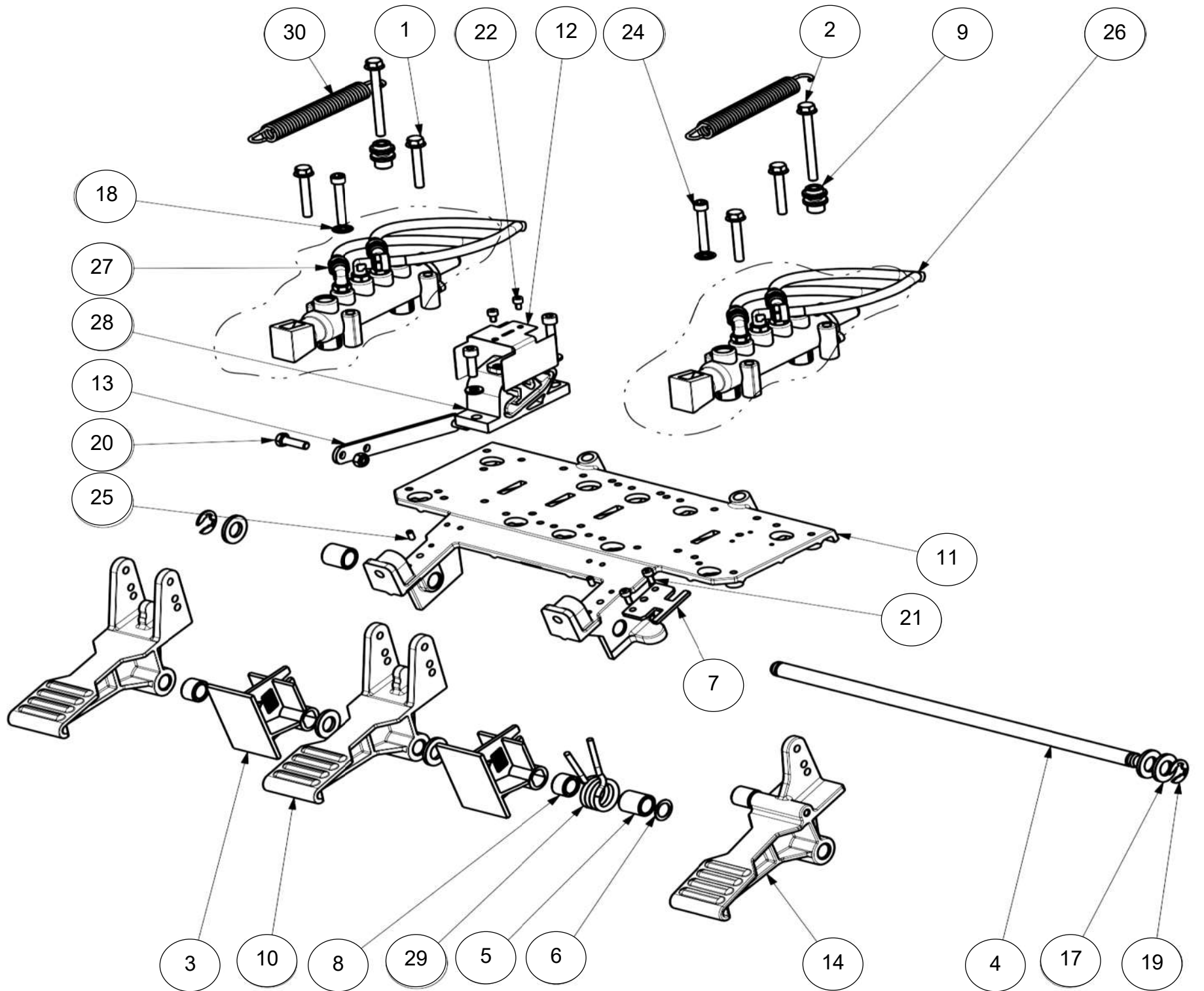


REF #	QTY	PART NUMBER	DESCRIPTION
1	1	EAA0409G85A	TURNTABLE 24' CENTER TYPE GT
2	1	EAS2153G40A	TURNTABLE CENTER TABLE
3	2	EAK0317G36A	CYLINDER SEAL KIT
4	8	1-25952A	PIN DOWEL 5MMX10MM
5	1	EAC0087G47A	TURNTABLE PROTECTOR
6	1	8-11714A	ORING 46.04.3.53
7	1	1-51101A	SCREW 16 X 1.5X 40 8G BR
8	1	EAS2092G32A	WASHER
9	2	EAA0410G31A	SELF CENTERING CYLINDER
10	1	1-18677A	SEEGER UNI 7435 ROD Ø60
11	1	EAM0051G85A	SUPPORT WASHER
12	2	EAM0051G90A	SUPPORT FOR PIPE BS
13	2	1-11633A	NUT - HEX . M6 6 S
14	2	1-14379A	CONNECTION L 1/4" 8X10
15	2	EAA0377G79A	BRACKET CYLINDERS
16	4	EAM0051G00A	GUIDE TERMINALS CENTRE CONVERG
17	2	1-27379A	F.STRAIGHT FITTING 8X10 1/4"
18	2	EAM0051G83A	PIPE FOR BS CLAMP
19	4	EAA0351G73A	CLAMP ACTIONING PLATE
20	4	EAM0075G00A	CLAMP, SLIDING W/CENTRE 24" GT MACHINED
21	2	1-18879A	FITTING - L 4X6 1/8"
22	2	1-27179A	STRAIGHT FITTING 4X6 1/8"
23	2	EAM0043G49A	PLATE REGISTER CLAMP
24	1	EAA0338G76A	COLLECTOR EXTERNAL RING
25	1	EAA0338G77A	GASKET SEAL SPRING
26	1	EAC0087G50A	FRONT GASKET BS
27	3	8-10814A	ORING Ø69.44X3.53

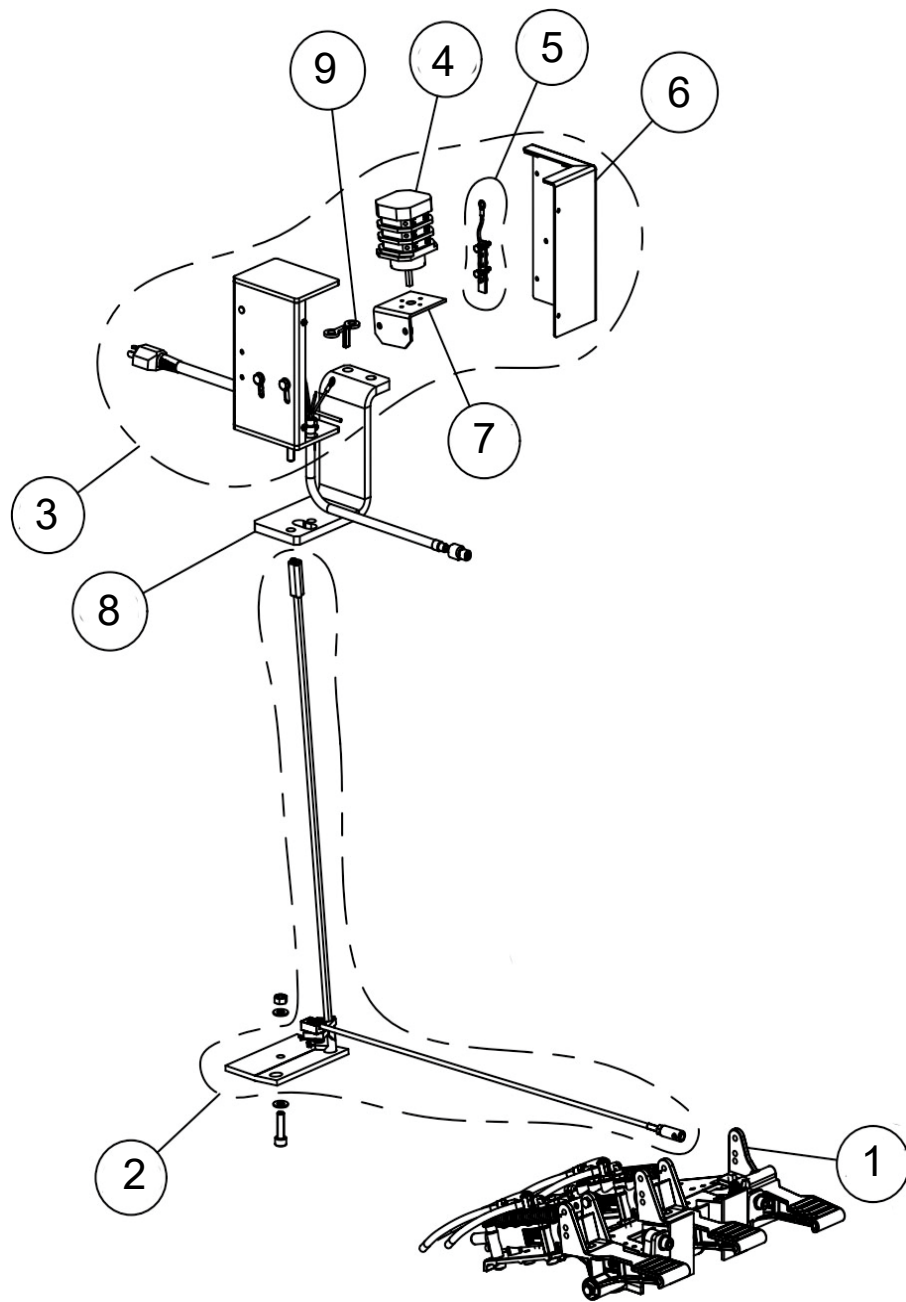
REF #	QTY	PART NUMBER	DESCRIPTION
28	1	EAA0338G27A	INNER COLL. WITH SCREW
29	1	EAA0304G69A	REVOLVING MANIFOLD GT
30	4	1-24603A	SCREW M8X60 CLASSE 12.9 UNI 5933-6
31	4	EAC0099G90A	PROTECTION JAWS NEW ST. 1901
32	4	1-36109A2	SCREW TBEI 5X10 8G
33	4	1-54409A	SCREW, 10X50 12.9 BLK UNI 5931
34	4	EAM0043G19A	ECCENTRIC FOR SLIDING ROD
35	2	EAM0051G75A	SLIDING ROD SPACER
36	8	EAM0051G74A	WASHER 30X17X0.3
37	4	1-24641A	WASHER Ø12,2X18X1 DIN 988
38	1	EAM0051G88A	AIR PIPE HOOK
39	4	1-19933A	NUT M12
40	2	1-13579A	FITTING "Y" 4X6 1/8"
41	2	1-14679A	RAPID CONNECTOR 1/4" Ø10
42	2	1-11379A	FITTING 4X6 1/8"
43	1	EAS2138G25A	RUBBER HOSE CONNECTION
44	2	ST0019653	FRONT CYLINDER FLANGE
45	2	ST0019652	REAR CYLINDER FLANGE
46	4	EAA0408G23A	ASSEMBLED SLIDING JAW C/TYPE V2
N/S	4	EAM0154G76A	SPRING PROTECTION AIR-HOS
N/S	4	ST0026904	PIPE, SPIRAL*BLK 6,5X10X2,5IN L
N/S		5-06435A	4MM X 6MM HOSE BTF
N/S		ST2618004	6MM X 8MM HOSE BTF
N/S		ST2618002	8MM X 10MM HOSE BTF



REF #	QTY	PART NUMBER	DESCRIPTION
1	1	EAA0557G27A	GEAR BOX TC
2	1	EAA0523G16A	MOTOR ASSY NIDEC 115V
3	1	2-97266A	MOTOR 1PH 115 V 60 HZ HAZLOC
4	1	EAS2238G35A	SUPPORT MOTOR HAZLOC
n/s	4	1-11733A	NUT-HEX M8 BLK
n/s	8	1-17741	WASHER-8MM
n/s	4	1-3048	WASHER-EXT TOOTH M8
n/s	4	1-32701	SCREW-HHMS M8 X 25 DIN 933
5	1	EAK0279G66A	BELT TIGHTENER KIT
6	1	EAM0154G58A	PULLEY DP=2 HOLE D 5/8
n/s	1	1-54210A	SET SCREW M6X10 HEX SOCKET
	1	1-48910A	SCREW-SET M6 X 10
7	1	EAC0103G74A	V BELT A-25
8	1	EAK0341G09A	GEARBOX PULLEY KIT
9	1	EAM0192G21A	M10 NUT JOINER
10	6	1-10141A1	WASHER P.d.10
	6	1-3148	EXT.SHAKEPROOF d.10 DIN 6798/A
	4	1-15433	NUT M10 YELLOW ZINCKED DIN 934
	6	1-50401A	SCREW TE 10X160 8G
11	1	1-1572	KEY-10 X 8 X 45
12	1	EAK0279G67A	ANTI ROTATION KIT
13	1	EAM0192G20A	M10 ROD
14	2	1-41241A	SPHERICAL WASHER
15	2	1-41341A	SPHERICAL WASHER

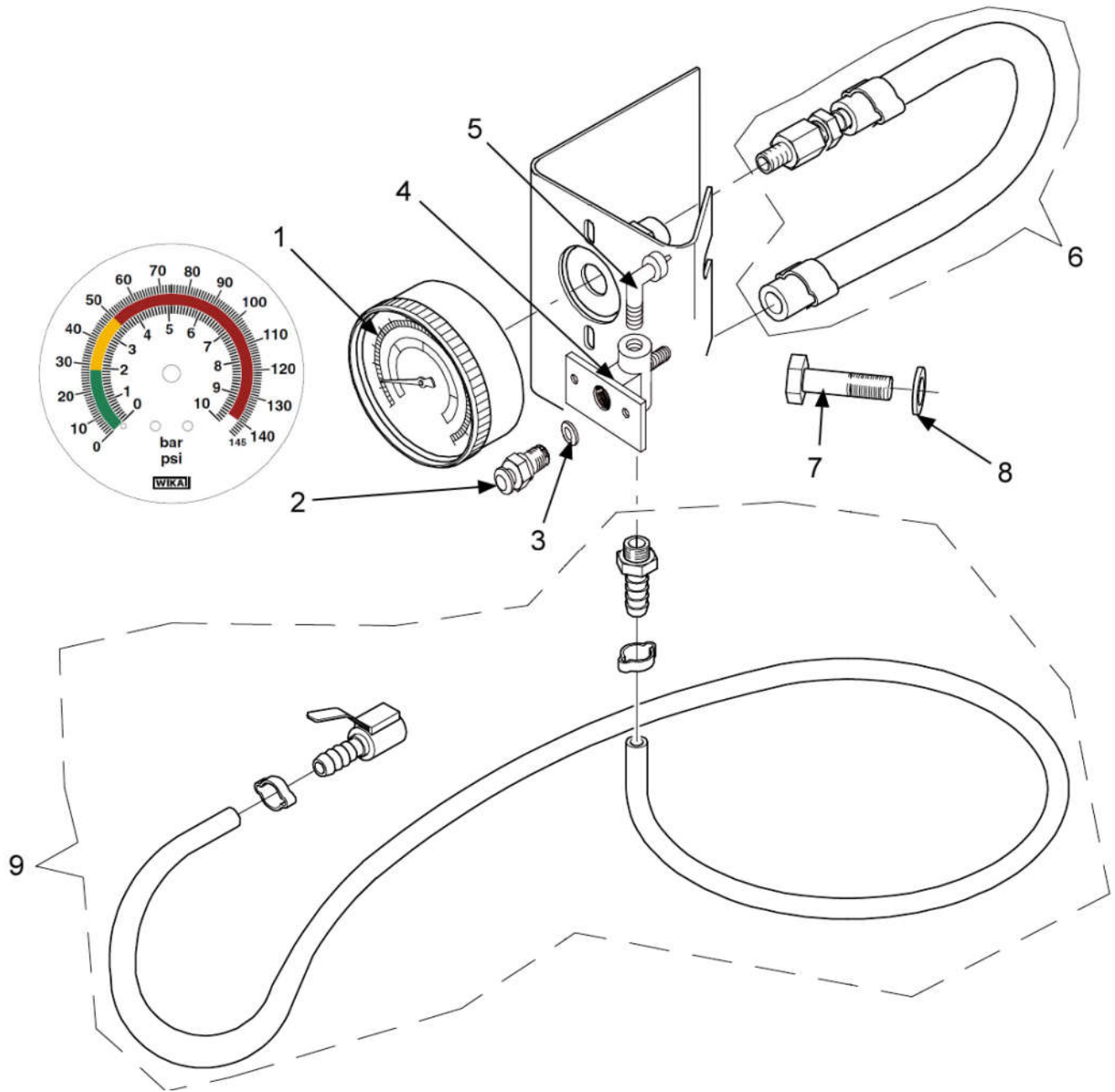


REF #	QTY	PART NUMBER	DESCRIPTION
1	4	1-12626A	SCREW HEX FLANGE HD M6X40
2	2	1-12726A	SCREW HEX FLANGE HD M6 X 65MM
3	2	EAC0096G11A	PEDAL SPACER-5655
4	1	ST0005731	SHAFT-HINGE PEDAL-EAM0068G10A
5	2	EAM0048G79A	BUSHING CENTERING-SPRING
6	1	1-25241A	WASHER FLAT 12.2X18X0.3
7	1	EAM0070G32A	COMMUTATOR SPRING GUIDE(35645)
8	2	EAM0070G46A	SPACER L=11MM -35646
9	2	EAC0099G82A	SPRING FIXING PAW-35648
10	2	EAM0068G95A	STAND. PEDAL MACHINED-35968
11	1	EAM0068G80A	PEDAL ASSY SUPORT-MACH-35972
12	1	EAS2115G09A	PROTECTION SHEET FOR CAM-36092
13	1	EAS2111G73A	ROD POSITIONER PEDAL-4031049
14	1	EAA0356G92A	RIGHT SWTCH FOOT PEDAL
15	1	1-9933	NUT-M6 ZINC 7020339
N/S	2	1-9841	WASHER-PLAIN 6MM/SAME AS4-6641
N/S	5	1-10241A	WASHER FLAT M12 91166A290
18	2	1-1548	WASHER-6MM SP-PURCH TEXT
19	1	1-18477A	RETAINING RING(ST7022039)
20	1	1-14801A	SCREW M6X20 HEX HEAD MACHINE
21	2	1-13409	SCREW-SHCS M4 X 10MM
22	2	1-46809	SCREW SHCS M4 X 6
N/S	2	1-16409	ALLEN SCREW, M6 X 20
24	2	1-56209A	SCREW HEX HD CAP M6X40
25	2	1-38910	SCREW - M4X8 SET CUP ZP
26	1	EAA0356G94A	Valve with 6x8 fittings
27	1	EAA0356G94A	Valve with 6x8 fittings
28	1	EAC0103G56A	FOOT PEDAL CAM
29	1	EAM0075G56A	SPRING, PEDAL SWITCH 2 SPEED
30	2	EAM0147G64A	SPRING, RECALL PEDALS

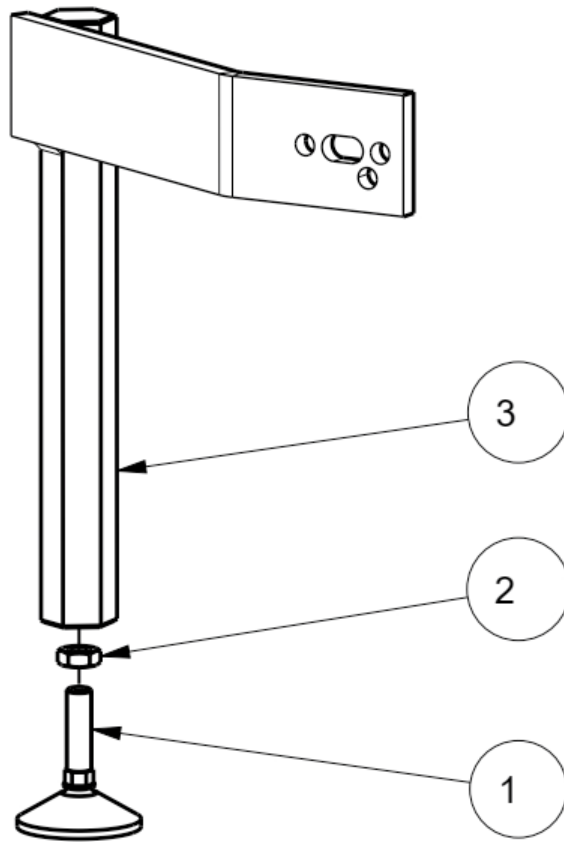


REF	QTY	PART NUMBER	DESCRIPTION
1	1	EAA0523G18A	CSA PEDAL UNIT - 3 PEDALS - 115V
2	1	EAA0523G19A	GROUP INVERTER TRANSMISSION
3	1	EAA0523G06A	CSA SWITCH BOX
4	1	2-16759A	1 PHASE ROTARY SWITCH
5	1	EAK0279G40A	KIT HARDWAR
6	1	EAS2238G31A	BOX, EXTERNAL INVERTER
7	1	EAS2126G72A	SUPPORT REVERS.GEAR
8	1	EAS2089G36A	FIXING SHEET
9	1	EAS2239G99A	PLATER WELD TC
N/S	1	EAW0276G32A	CABLE WITH CSA PLUG
N/S	1	EAW0287G27A	MOTOR CABLE 115V - HAZLOC

Complete Assembly EAA0332G46A



REF	QTY	PART NUMBER	DESCRIPTION
1	1	8-06820A	GAUGE-AIR BAR / PSI
2	1	EAA0328G57A	BLEEDER VALVE
3	1	EAM0043G64A	WASHER, BLEEDER VALVE
4	1	EAC0078G59A	BODY BLEEDER VALVE
5	1	1-11479A	FITTING - L 6 X 8 1/8
6	1	EAH0049G12A	HOSE - GAUGE FITTING
7	2	1-32501A	SCREW 8 X 16
8	2	1-10041	WASHER D8



REF#	QTY	PART NUMBER	DESCRIPTION
1	1	8-12618A	JOINT FOOT WITH THREAD PIN M12
2	1	1-22733A	NUT - M12 6S
3	1	EAS2196G03A	FOOT SUPPORT
4	1	EAS2141J44A	FOOT EXTENSION WLDMNT
N/S	1	1-17609	BOLT -M8 X 1.25 X 16
N/S	2	1-10033	M8 ESNA NUT
N/S	3	1-10041	WASHER
N/S	4	EAS2141J44A	FOOT EXTENSION WLDMNT
N/S	1	EAA0471G44A	REAR FOOT ASSY
N/S	2	1-19109	M10 X 25 BOLT
N/S	2	1-11841	D10 WASHER
N/S	1	8-04450A	8.5 MM DRILL BIT BLACK OXIDE HS STEEL
N/S	1	8-04350A	M10X1.5 THRU-HOLE TAP HS STEEL COATED
N/S	1	EAK0237J22B	FOOT EXTENSION KIT



EHP System II-E

Snap-on Equipment
309 Exchange Ave.
Conway, Ar 72032
501-450-1500

Notice: The information contained in this document is subject to change without notice. Snap-on Equipment makes no warranty with regard to this material. Snap-on Equipment shall not be liable for errors contained herein or for incidental consequential damages in connection with furnishings, performance, or use of this material. This document contains proprietary information which is protected by copyright and patents. All rights are reserved. no part of this document may be photocopied, reproduced, or translated without prior written consent

For Parts And Service Call Snap-on Equipment 1.800.225.5786

PARTS
MANUAL