

# HOFMANN®



## *monty 1625 smartSpeed*

---

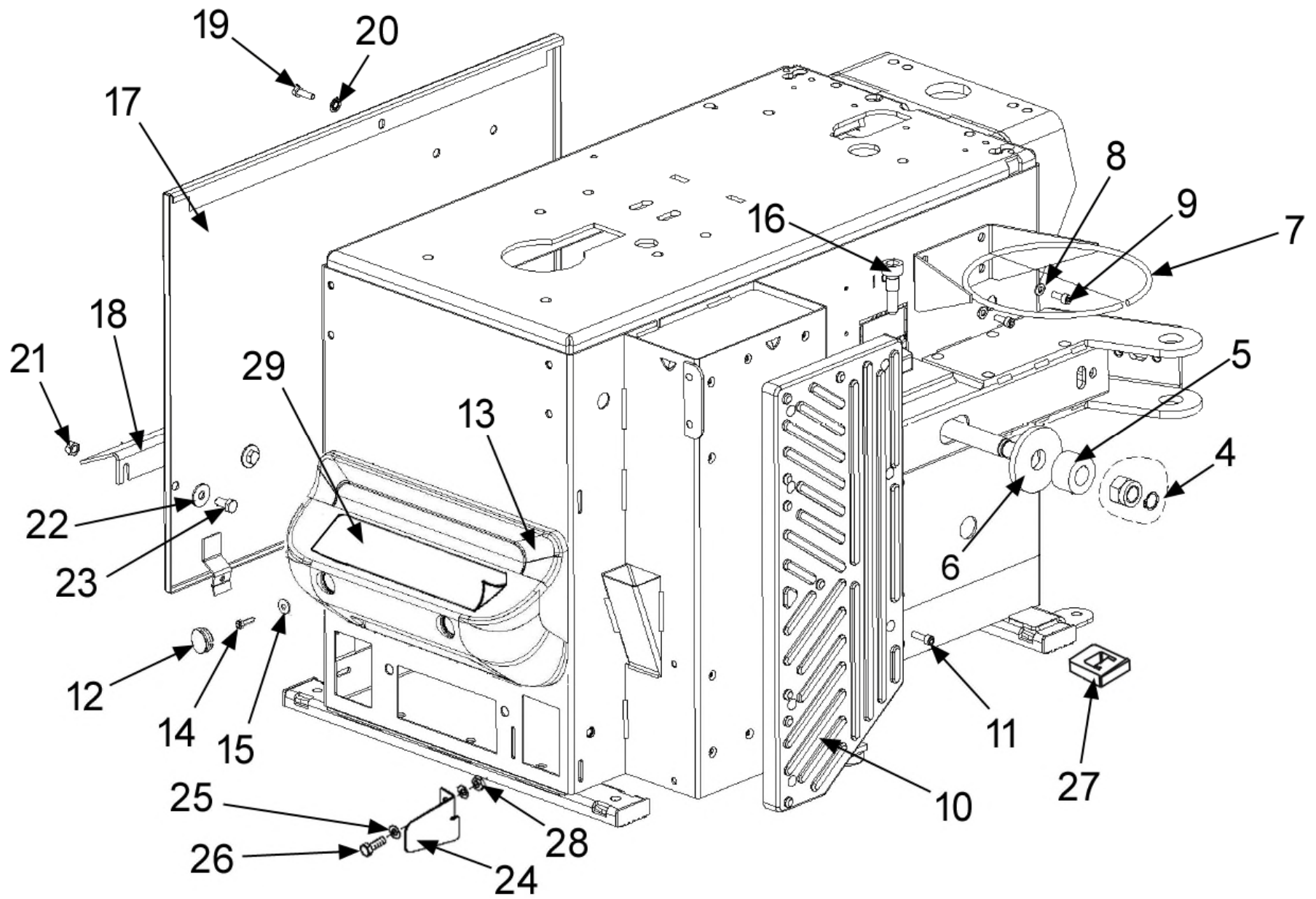
Spare Parts List



## BOM EEWH748B Monty 1625 SmartSpeed

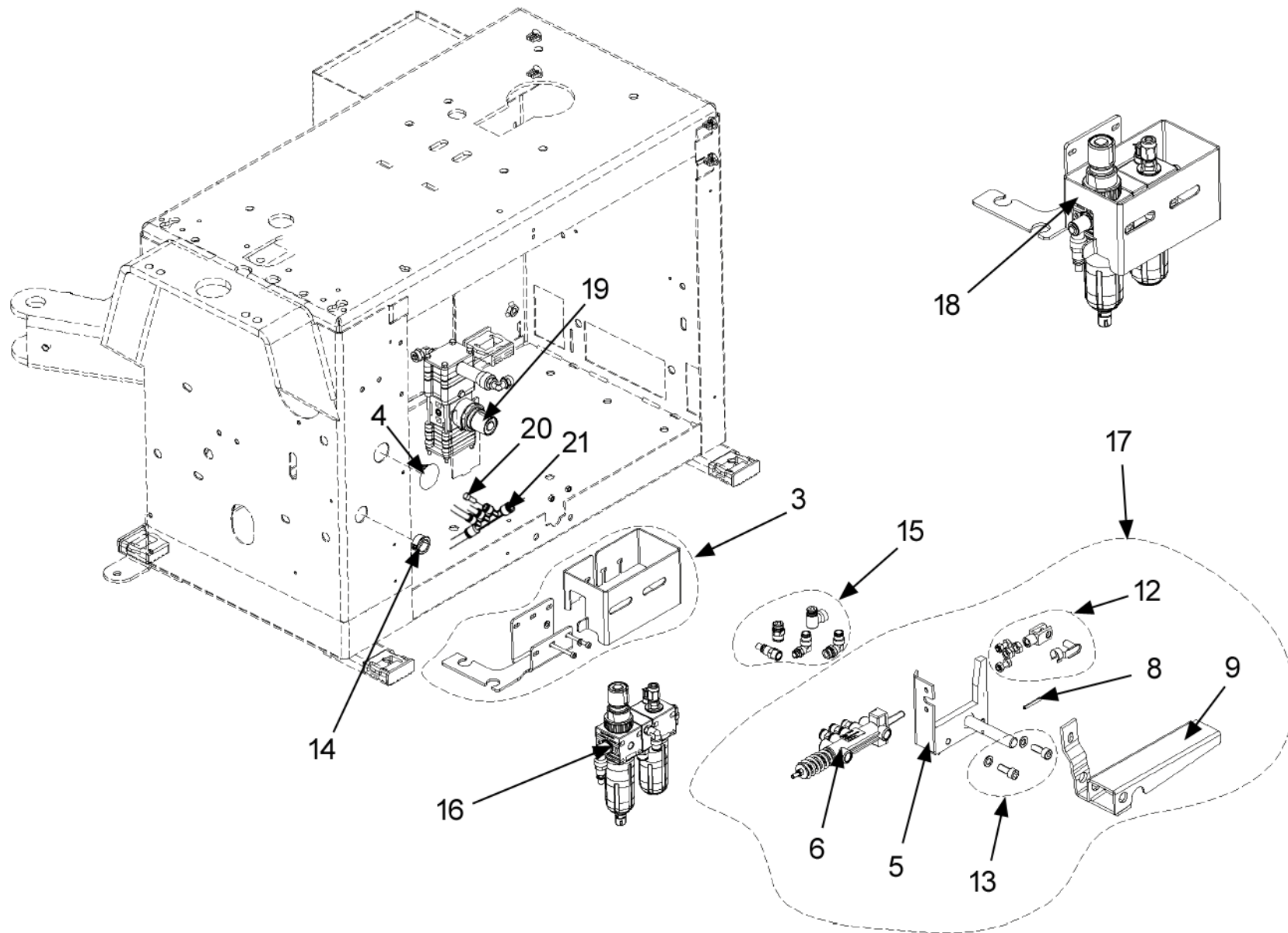
Part Number	Quantity	Description
EAA0270J48A	1	Tc Assy-Monty 1625 Smartspeed
ZEEWH748B9	1	Lit Pack-Monty 1625 Smartspeed
EAC0078G13A	5	Back Plstc Rim Protector
EAC0097G47A	1	Wave Tire Mounting Lever
EAC0113G61A	5	Rim Protector Plastic
EAK0329G86A	1	Lghtalloy Rim Prote Front Only
5-14126A	1	Brush Tire Lube Applicator
4027094	1	Holder Lube Bottle
01267267000	1	Wire Dauber
00066006000	1	Bottle-Lube
8-03229A	1	Lubricant-Tire Mounting 75N
EAL0408G12A	1	Label Patents
EAL0413G31A	1	Label Ground
19159	1	Label Drain Water
EAL0443G66A	1	Decal-Entrapment Warning
EAL0408G24A	1	Label Oil
EAL0383G34A	1	Label Danger
EAL0383G32A	1	Label Danger
16510	1	Label Danger
EAL0343J76B	1	Serial Label Document
EAL0413G34A	1	Label Inflator
EAL0412G13A	1	Sticker Pedals
EAL0383G01A	1	Rotation Direction Label
EAC0100G55A	1	Label Sealing Hole

Part Number	Quantity	Description
EAL0462G75A	1	Label Hofmann 1625 Smartspeed
16511	1	Label-Danger
EAL0408G25A	1	Label Pressure Min Max



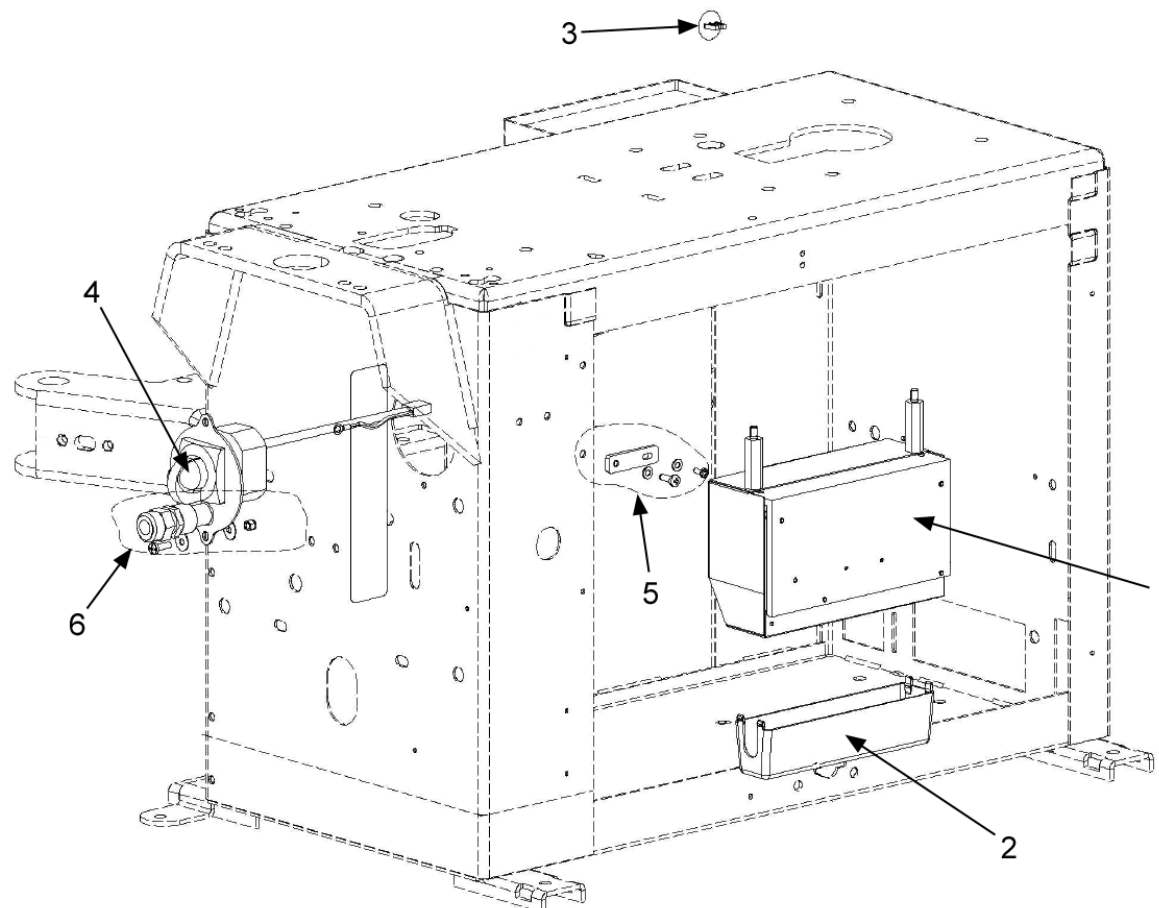
Ref	Qty	Part Number	Description	
4	1	EAK0306G23A	Fixing Kit For Bead Breaker Arm	
	1	1-3977	Retaining Ring	
	1	1-20933A	Nut Lock M18 - 1.5	
5	1	EAC0097G51A	Washer - Shock Absorber	
6	1	EAS2097G96A	Washer,Support-Bead Breaker	EAM0067G33A
7	1	EAA0349G76A	Ring- Box, Grease	
8	2	1-9841	Washer,Plain D6 Zinc.	
9	2	1-16309	Screw Hex Socket M 6x16	
10	1	EAC0099G22A	Pad- Support, Beadbriker	
11	7	1-16409A	Screw Tcei 6x20 8G	
12	2	EAC0114G12A	Cup For Frontal Protection	
13	1	EAC0114G09A	Front Plastic Pedals Protection	
14	2	1-24223A	Screw- Selfthread. 10Ex16 Te	
15	2	1-19041A	Washer 5 x 16 x 1	
16	2	EAM0067G34A	Screw,Fitting- Cylinder B/Break	

Ref	Qty	Part Number	Description	
17	1	EAS2029J62A	Black Side Panel	EAS2126G60A
18	1	EAS2115G83A	Protector,Pedal	
19	1	1-30901A2	Screw Te 6x20 8G	
20	1	1-1548	Washer-Lock D.6	
21	2	1-15933A	Nut M8	1-11733
22	2	1-17841	Washer - D. 8x24	
23	2	1-32501A	Screw 8x16 8G	
24	1	EAS2100G95A	Pedal-Reverser Protection	
25	2	1-17741	Washer D.8	
26	3	1-32601	Screw - M8 x 20mm Hex Head	
27	4	EAC0097G52A	Foot Square	
28	1	1-15933A	Nut Hex M8 - 1.25mm	
29	1	EAL0412G13A	Sticker Pedals	

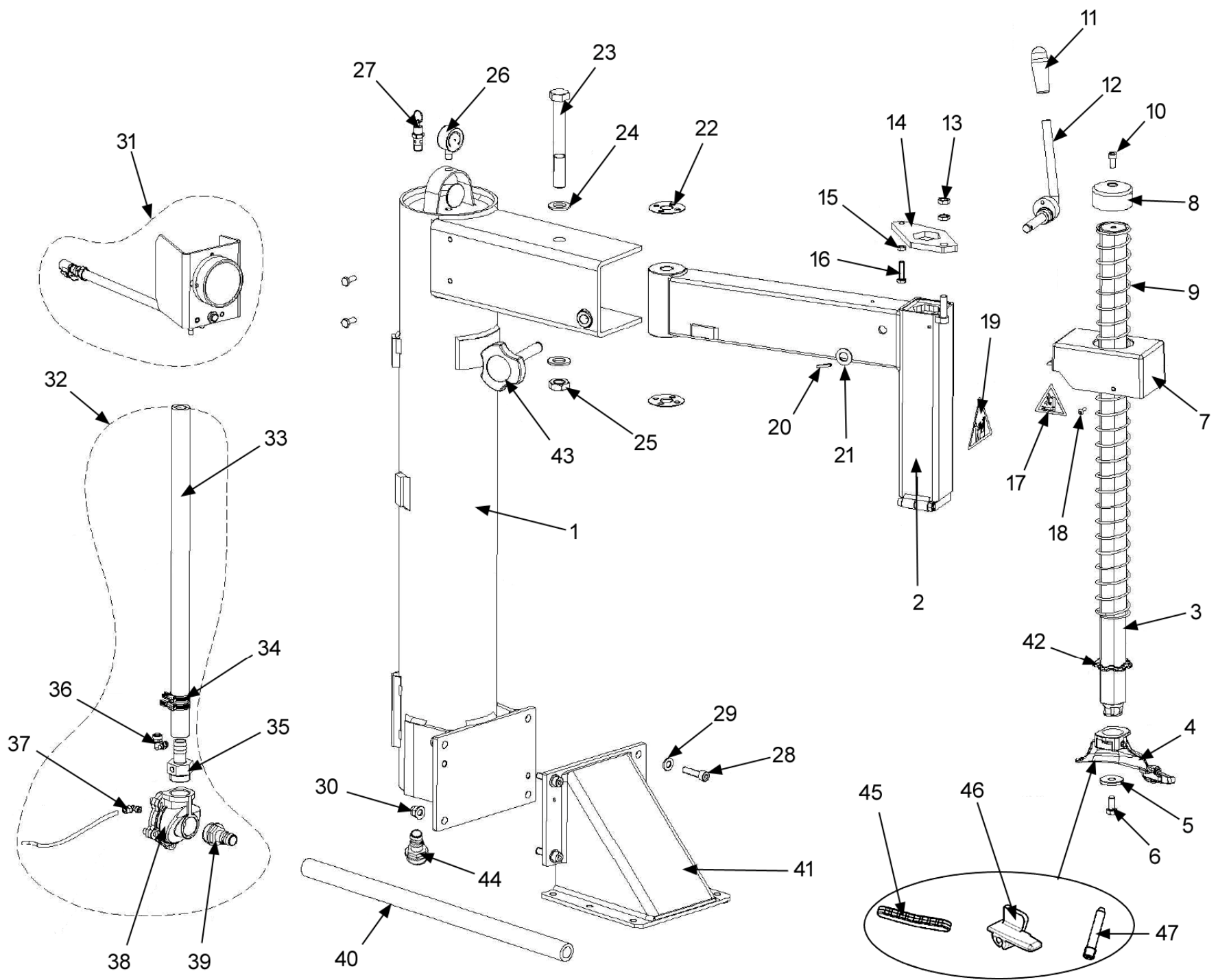


Ref	Qty	Part Number	Description	
3	1	EAK0330G49A	Na Lub. Filter Fixing Kit	
4	1	1-08676A	Cap, Closing	
5	1	EAS2134G52A	Gt Pedal Support	
6	1	ST4029115	Valve, Bead Inflating	EAA0329G75A
8	1	ST7023119	Pin - Straight Slotted 4X30	1-6652
9	1	ST4029114	Inflator Pedal Cataphor	EAS2068G87A
12	1	EAK0306G32A	Screws And Bolts For Gt Valve	
13	1	EAK0306G33A	Screws And Bolts For Gt Pedal	
14	1	8-11616A	Snap Bushing	
15	1	EAK0315G99A	Fittings Kit For Filter	
16	1	EAA0439G90A	Filter-Press.Reg	
17	1	EAA0384G14A	Group, Bead Inflating Pedal	
18	1	EAA0489G30A	Lubricator Filter Group	
19	1	EAA0384G22A	Valve, Air Control	
20	1	1-09176A	Cap, Fitting D6	
21	1	1-12379A	Multi-Tee 08-06	





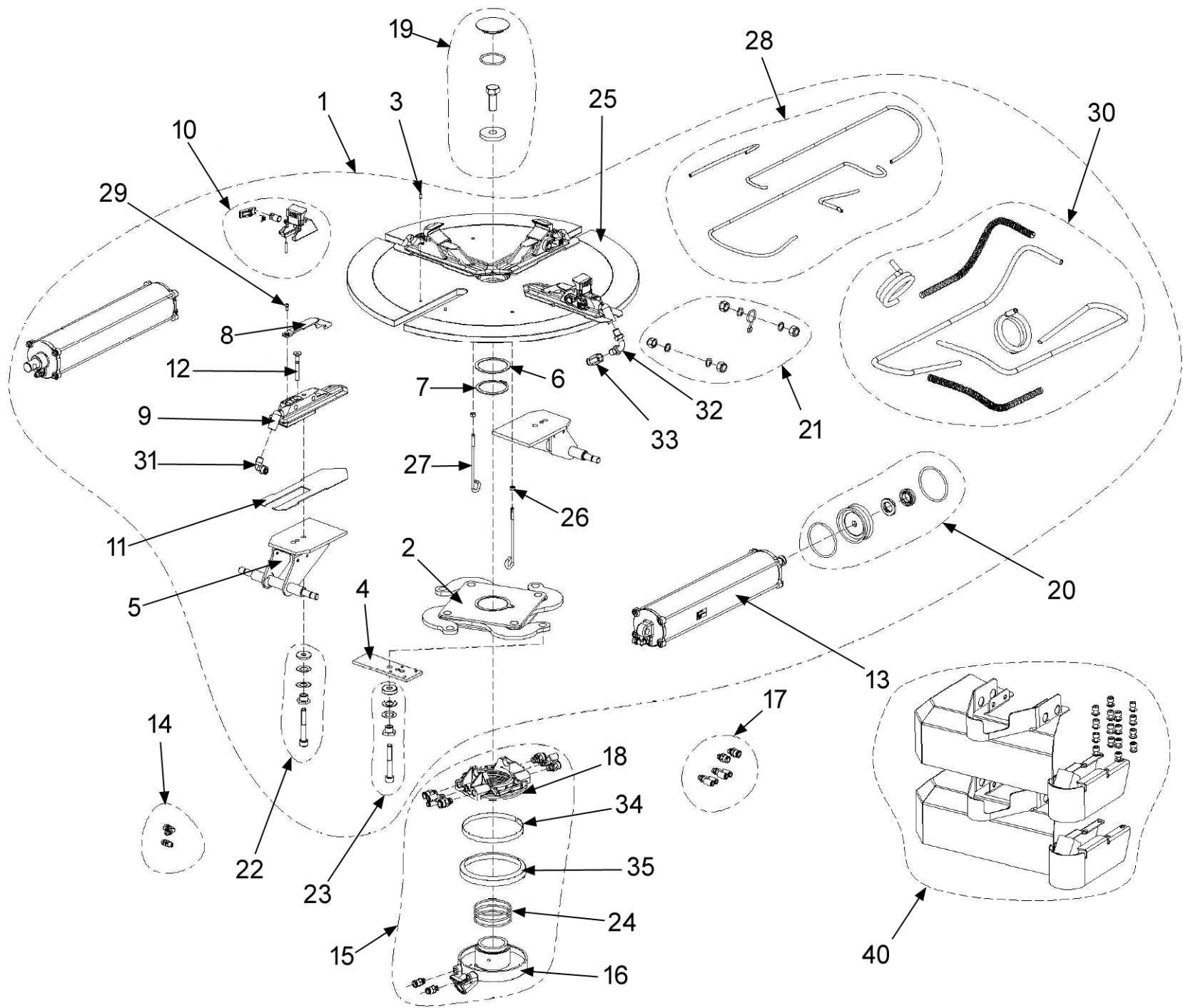
Ref	Qty	Part Number	Description
1	1	EAA0481G23A	Inverter Group
2	1	EAC0103G88A	Cover For Inverter Box
3	1	1-09076A	Cap Closing
4	1	EAA0481G43A	Rotary Cam Switch Group - UI
5	1	EAK0317G29A	Kit, Bracket For Inverter Kit
6	1	EAK0317G30A	Kit, Fixing For Switch



Ref	Qty	Part Number	Description	
1	1	EAS2141J21A	Swing Column	EAS2169G73A
2	1	EAM0010J44A	Swing Arm	EAA0440G41A
3	1	EAM0122G32A	Rod-Vertical	
4	1	EAA0329G95A	Mounting/Demounting Tool	
5	1	EAM0032G02A	Washer- Tool Clamping	
6	1	1-44901A	Screw Hex 10X20 8G	1-34301A
7	1	4020113	Protection, Upper Tower	EAM0126G17A
8	1	EAM0140G92A	Cover For Hex Bar	
9	1	EAS2153G47A	Spring-Recall, Tower,Vertical	
10	1	1-17609A	Screw, 8X16 8.8 Uni5931-67	
11	1	EAC0078G04A	Handle-Rubber	
12	1	EAS2108G36A	Lever, Register	
13	2	1-19633B	Nut- M10 6S Blk Uni5589-65	
14	1	EAM0010J50A	Lever- Necking	EAS2153G46A
15	1	1-15933A	Nut M8 Din 936 - Uni 5589	
16	1	EAM0067G26A	Screw, Adjustment- Rod	
17	2	EAL0408G42A	Sticker Danger	
18	3	1-63709A	Screw Tbei 5X16 8.8	1-49709A
19	1	EAL0408G44A	Danger Label	

Ref	Qty	Part Number	Description	
20	1	1-6452	Pin, Straight Slotted	
21	1	1-10341	Washer - D.14	
22	2	EAM0067G29A	Washer - Adjustment	
23	1	EAM0067G25A	Screw, Swing Arm Support	
24	2	1-10641	Washer	
25	1	1-21633A	Nut	
26	1	8-06120A	Manometer-Radial 0-16 D.40	
27	1	1-31381A	Valve, Asme Safety, 1/4" Bspt	
28	4	1-19409	Screw Tcei 10X40	
29	8	1-10141A1	Washer P.D.10	
30	4	1-15433	Nut Selfclamping	7020879
31	1	EAA0332G46A	Assy,Gauge-Pressure Psi / Kpa	EAA0332G48A
32	1	EAA0351G06A	Assy, Valve- Pneumatic	EAA0351G03A
33	mr	2072705	Hose, Air- High Pressure sold by the meter	27096
34	4	EAM0075G29A	Clip, Locking-Hose	
35	1	15658	Fitting, Rub.Holder 1" Long	
36	1	1-17279A	Fitting "L" 6X8 1/8	
37	1	1-17179A	Elbow Fitting "L" 4X6 1/4"	
38	1	1-29581A	Valve,Air-Controlled	
39	1	EAM0071G99A	Fitting , Support M1"-20	

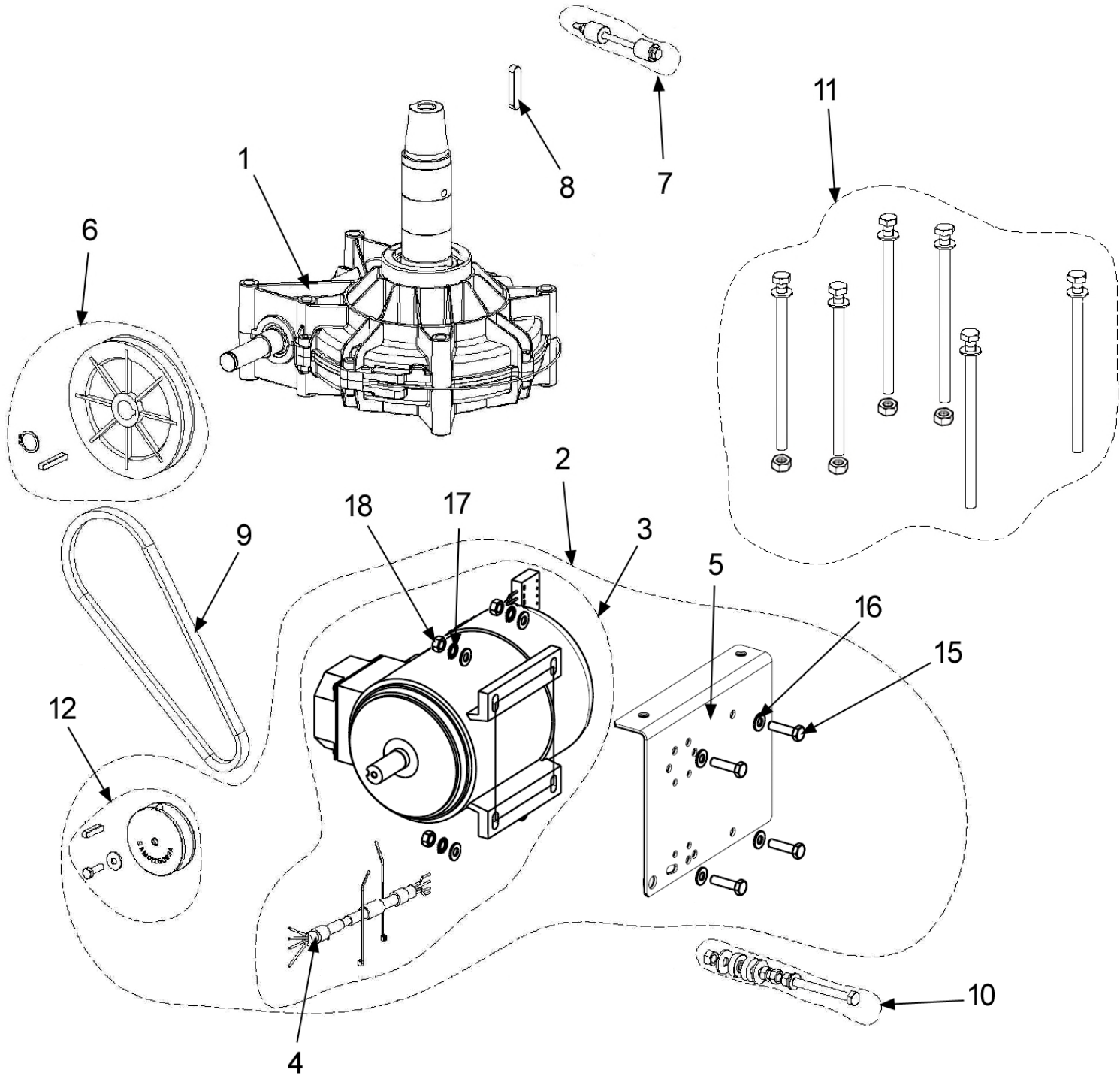
Ref	Qty	Part Number	Description	
40	mr	2072705	Hose, Air sold by the meter	14121
41	1	EAS2141J20A	Column Support	EAS2169G72A
42	1	EAC0094G02A	Ring, Shock-Absorber	
43	1	EAA0270J79A	Handle With Screw	1-03512A
44	1	1-41880A	3/4" NPT to 3/4" Hose Barb	
45	5	EAC0078G13A	Back Plastic Rim Protection	
46	5	EAC0113G61A	Plastic Rim Protection	
47	5	EAM0043G53A	Pin M5 Hexagonal Socket	



Ref	Qty	Part Number	Description	
1	1	EAA0409G85A	Turntable 24" Center Type No Gt	EAA0489G97A
2	1	EAA0351G73A	Clamp Actioning Plate	EAA0489G39A
3	8	1-25952A	Pin Dowel 5X10 Uni En 28734	
4	2	EAM0043G49A	Plate, Register -Clamp	
5	2	EAA0377G79A	Bracket Cylinders	
6	1	EAM0051G85A	Support,Ring	
7	1	1-18677A	Ring- Stop D.60	
8	4	EAC0099G90A	Protection Jaws New	
9	4	ST0029428	Clamp, Sliding W/Centre 20"	EAM0075G00A
10	4	EAA0408G23A	Assembled Sliding Jaw C/Type V2	
11	4	EAM0051G00A	Sliding Clamp Guide	EAS2201G51A
12	4	1-24603A	Screw Tsei 8X60 12.9	
13	2	EAA0410G31A	Cylinder, Turntable	
14	1	EAK0330G35A	Tt Cylinder Fittings Kit	
15	1	EAA0304G69A	Revolving Manifold, Tubeless Inflator	
16	1	EAA0338G27A	Ring-Inside, With Supports	
17	1	EAK0330G28A	Revolving Manifold Fittings Kit	
18	1	EAA0338G76A	Ring,Outer - Manifold	
19	1	EAK0306G25A	Turntable Fixing Kit	

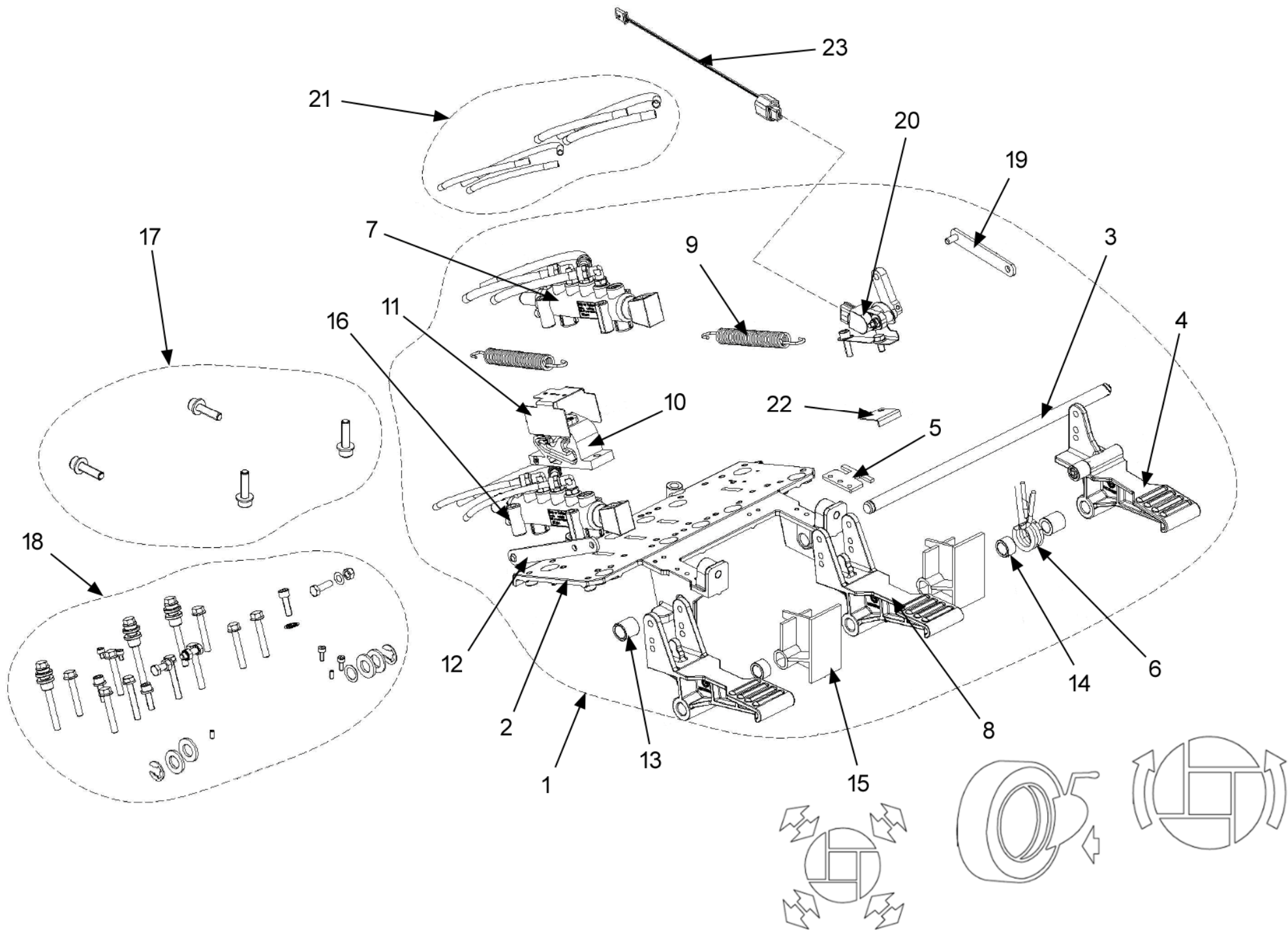
Ref	Qty	Part Number	Description	
20	2	EAK0317G36A	Seal For Round Cylinder	
21	1	EAK0306G27A	Screws And Bolts For Turntable Cyl.	
22	2	EAK0329G89A	Screws And Bolts For Clamps	
23	2	EAK0329G88A	Screws And Bolts With Eccentric	
24	3	8-10814A	Seal Or D.69.44X3.53	
25	1	EAS2153G40A	Turntable Flange, C/Type	EAA0481G73A
26	2	1-11633A	Nut-Hex. M6 6S	
27	2	EAM0051G90A	Support, Pipe Gt ( White Galvan.)	
28	1	EAK0341G62A	Turntables Hoses Kit	
29	4	1-36109A2	Screw Tbei 5X10 8G	
30	1	EAK0341G63A	Turntable Hoses Kit For Gt	
31	2	1-14379A	Fitting-90 Deg L 1/4 8X10	
32	2	EAM0051G83A	Pipe For Terminal Gt	
33	2	1-27379A	Fitting, Swift F.8X10 1/4"	1-14479A
34	1	EAA0338G77A	Spring, Joint Sealing	
35	1	EAC0087G50A	Seal Tubeless Inflator-Front Joint	
40	1	EAA0458G96A	Anti Entrapment Protection Kit 24"	





Ref	Qty	Part Number	Description	
1	1	EAA0382G23A	Gearbox	EAA0457G27A
2	1	EAA0481G56A	H/S & CSA Motor Asm For Inverter	
3	1	EAA0410G02A	High Speed Motor W/Cable Invert. CSA	
4	1	EAW0283G37A	UI Motor Cable With Connector	
5	1	EAS2131G28A	Motor Support	
6	1	EAK0306G14A	Reduction Unit Pulley Kit	
	1	1-03472A	Key 6 x 6 x 45	
	1	1-24477A	Elastic Compensation Ring	
	1	1-18577A	Ring-Snap D19	
	1	EAM0125G94A	Pulley Dp 130	
7	1	EAK0279G67A	Antirotaion Kit	
	1	1-50301A	Screw M6 x 10	
	2	1-9841	Washer D6	
	2	EAM0032G93A	Antirotaion Bushing	
	1	1-01637A	Nut M6	
8	1	1-1572	Key-10x8x45	
9	1	EAC0099G95A	Belt, A27	

Ref	Qty	Part Number	Description	
10	1	EAK0279G66A	Belt Tightener Kit	
	1	1-10033	Lock Nut M8	
	3	1-15933A	Nut M8-Hex 1.25mm	1-11733
	1	1-10041	Washer D8 x 17	
	3	EAC0097G54A	Shock Absorber washer	
	3	1-17841	Washer D8 x 24	
	1	1-33501A	Screw M8 x 65	
11	1	EAK0279G65A	Screws Kit For Gearbox	
	6	1-50401A	Screw M10 x 160	
	6	1-10141A1	Washer D10	
	6	1-15433	Nut M10	
12	1	EAK0330G26A	Motor D. 60 Pulley Kit	
	1	EAM0125G93A	Pulley 1 Groove	
	1	1-472A	Key 6 x 6 x 28	
	1	1-14801A	Screw M6 x 20	
	1	1-20041A	Washer Flat M6	
15	4	1-32801A1	Screw Hex Head 8 x 30	
16	8	1-10041	Washer Plain M8	
17	4	1-3048	Washer Ext Tooth	
18	4	1-15933A	Nut Hex M8 - 1.25	1-11733
		EAK0279G64A	Hardware Kit For Motor items 15, 16, 17, 18	

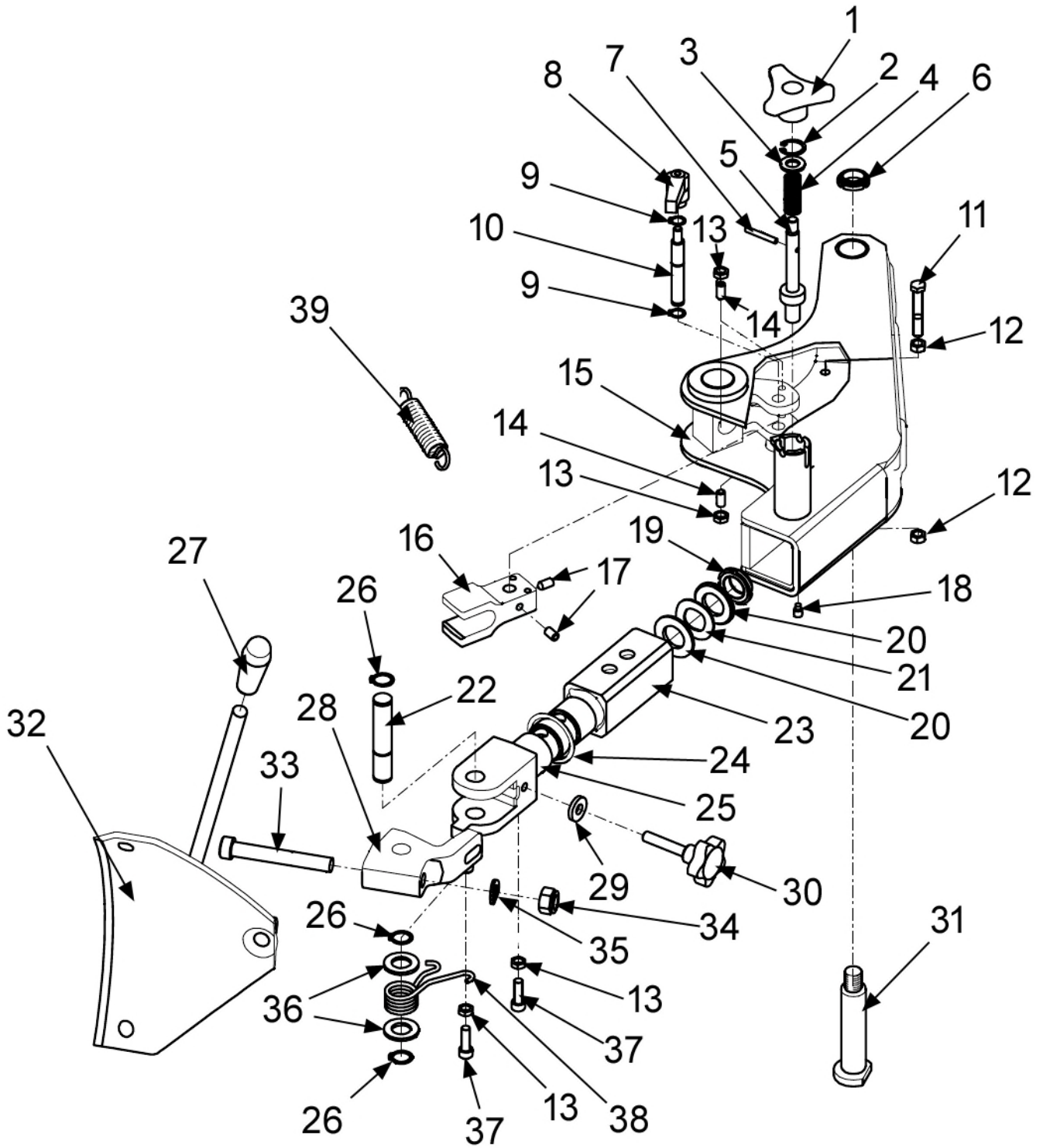


Ref	Qty	Part Number	Description	
1	1	EAA0481G84A	3P Control Pedal With Potentiometer	
2	1	EAM0068G80A	Pedal Asm Support - Machined	
3	1	EAM0068G10A	Shaft-Hinge, Pedal	
4	1	EAA0356G92A	Right Switch Foot Pedal	
5	1	EAM0070G32A	Commutator Spring Guide	
6	1	EAM0075G56A	Spring, Pedal Switch 2Speed	
7	1	EAA0440G87A	Bead Breaker Pedal Hoses + Valve	
	1	EAA0356G94A	Bead Breaker Valve	
	1	EAA0440G84A	Hose group	
8	2	EAM0068G95A	Standard Pedal - Machined	
9	2	EAM0147G64A	Spring Recall Pedals	EAM0075G91A
10	1	EAC0103G56A	Cam For Pedal	
11	1	EAS2115G09A	Protection Sheet For Cam	
12	1	EAS2111G73A	Rod Positioner Pedal	
13	2	EAM0048G79A	Bushing, Centering- Spring	
14	2	EAM0070G46A	Spacer L=11 Mm	
15	2	EAC0096G11A	Spacer-Pedal	

Ref	Qty	Part Number	Description
16	1	EAA0440G88A	Turntable Pedal Hoses + Valve
	1	EAA0356G94A	Turntable Valve
	1	EAA0440G85A	Hose group
17	1	EAK0279G96A	Control Pedals Mounting Kit
18	1	EAK0279G39A	Nuts/Screws For Foot Pedal Asm
19	1	EAS2132G66A	Rod Pedal Potentiometer
20	1	EAA0425G42A	Pedal Potentiometer
	1	EAK0330G64A	Pedal Potentiometer w/lever
21	1	EAA0364G10A	Hoses Kit for Foot Pedal Asm 3P
	mr	ST2618004	Hoses 8 x 6 mm <span style="float: right;">sold by the meter</span>
22	1	EAS2140G74A	End Stroke For Pedal
23	1	EAW0286G08A	Cable For Cts Potentiometer

# Bead Breaker Assembly EAA0344G08A

June 2017 (78BFLxxx) to March 2018 (78BCMxxx)



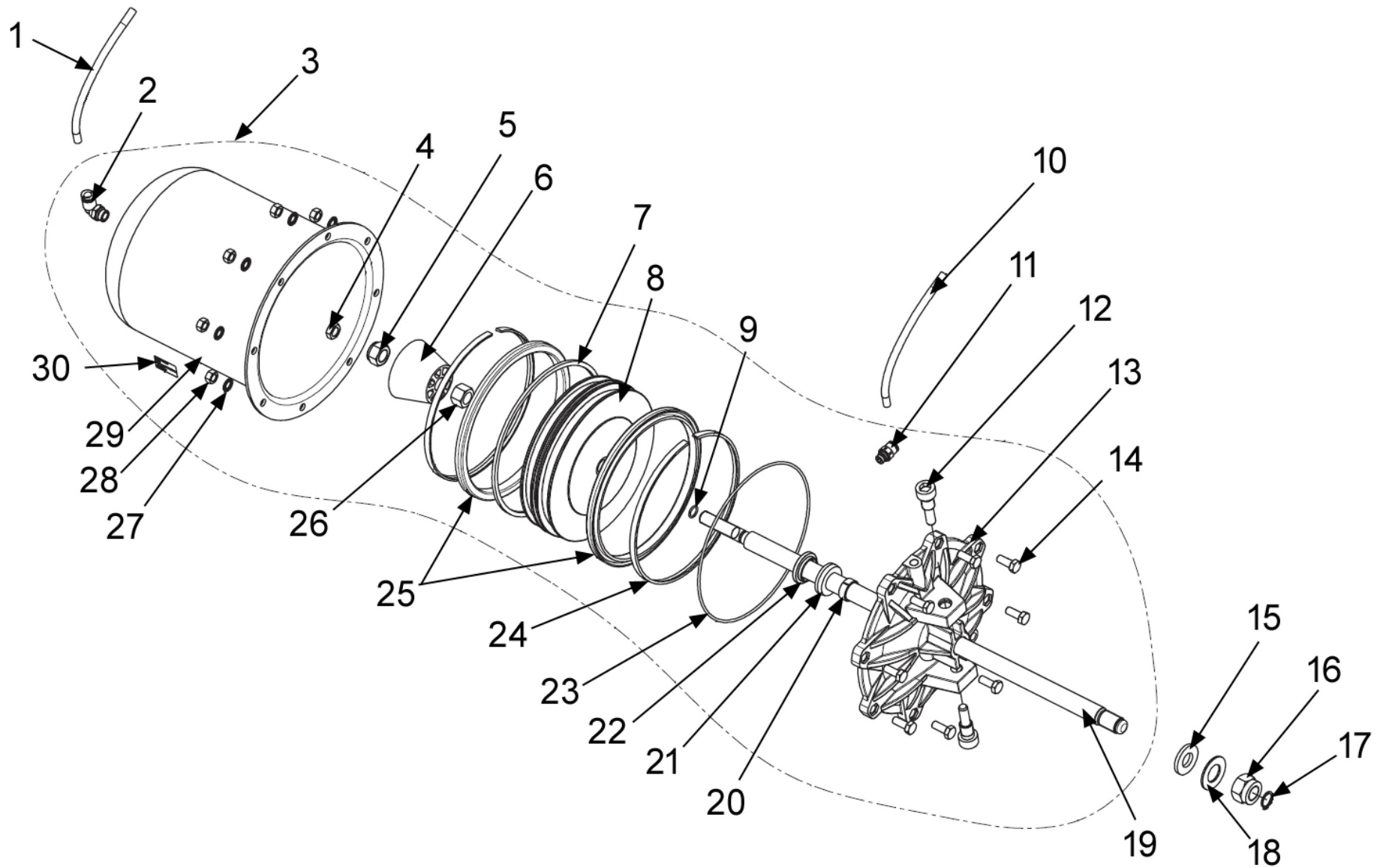
Ref	Qty	Part Number	Description	
1	1	1-02112A	Three Armed Handwheel	
2	1	ST7022269	Snap Ring D24	1-19177A
3	1	1-10241A	Washer Piston D12	
4	1	ST0003523	Spring Handle, Bead	EAM0052G37A
5	1	EAM0052G70A	Blade Positioning Pin	
6	1	1-02138A	Ring Nut Metal	
7	1	1-8552	Pins Straight Slotted	
8	1	8-10933A	Adjustable Handles	
9	2	1-3677	Snap Ring D12	ST7022059
10	1	EAM0052G73A	Stopper Rod	
11	1	1-19301	Hex Head Screw 8 x 55	
12	2	1-11733	Nut M8	
13	4	1-15933A	Nut M8	
14	2	1-51810A	Locking Device with Ball	
15	1	EAS2096G02A	Bead Breaker Arm	
16	1	EAM0052G72A	Two Position Stopper	
17	2	1-22210A	Screw 8 x 16	
18	1	1-51710A	Screw 8 x 12	
19	1	1-02338A	Ring Nut Metal Lock M25 x 1.5	
20	1	1-25341A	Plane Washer D25	



Ref	Qty	Part Number	Description	
21	1	1-06246A	Washer D25	
22	1	EAM0052G71A	Blade Rod	
23	1	EAS2097G84A	Guide	
24	1	EAM0052G76A	Plane Washer	
25	1	EAM0052G69A	Worked Rod	
26	3	1-4177	Seeger D18	
27	1	EAC0078G04A	Handle Rubber	
28	1	EAM0052G74A	Worked Floating Forged	
29	1	1-20741A	Plain Washer	
30	1	1-02312A	SCR Wing	
31	1	EAM0048G84A	Fulcrum Pin Bead Breaker	
32	1	ST4021305	Bead Breaker Blade	EAS2087G93A
33	1	1-30309A	Screw M8 x 50	
34	1	ST7020409	Nut M14 Lock	1-10433
35	1	ST7021329	Washer D14.2	1-06346A
36	2	1-10541	Washer D18	
37	2	1-17809A	Screw 8 x 25	
38	1	EAM0052G75A	Torsional Spring	
39	1	EAM0067G69A	Spring- Recall Arm	0001229

# Bead Breaker Cylinder

From June 2017 (78BFLxxx) to March 2018 (78BCMxxx)

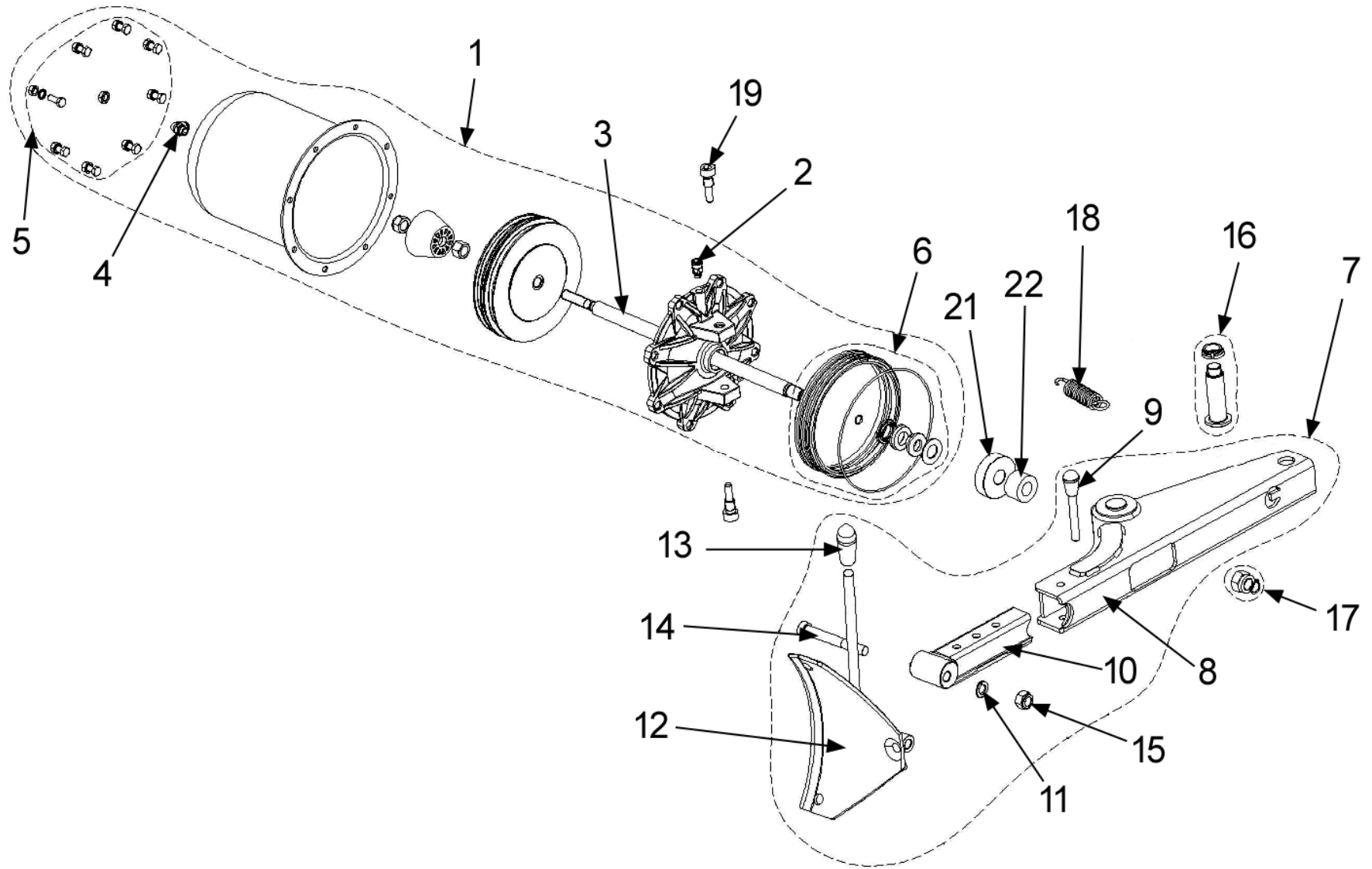


Ref	Qty	Part Number	Description	
1	mr	5-06335a	Hose - Air 6 x 8 sold by the meter	EAM0069G97A
2	1	1-20179A	Fitting "L" 6 x 8	
3	1	EAA0329G51A	Cylinder, Bead Breaker	
4	1	1-16433A	Nut 1/4" X 0.25"	
5	1	ST7020409	Nut-S.Lock,Low- M14	1-10433
6	1	EAM0048G04A	Limit Switch Rubber Pad	
7	1	ST0010597	Ring- Plastic	EAC0078G35A
8	1	ST0009279	Piston	EAC0094G40A
9	1	8-18314A	Seal-Or D.11	
10		5-06635A	Hose - Air 6 x 8 sold by the meter	EAM0069G97A
11	1	ST0001924	Fitting-St 6 x 8 1/8	1-11379A
12	1	EAM0067G34A	Screw,Fitting- Cylinder B/Break	
13	1	ST0013409	End Cap-Cylinder/Bead Breaker	EAC0078G36A
14	8	1-32601	Screw Te 8 x 20 8.8	
15	1	EAM0075G25A	Washer, Felt	
16	1	1-20933A	Nut	
17	1	1-3977	Retaining Ring For Shafts D16	
18	1	EAM0075G26A	Washer, Black Plastic	
19	1	EAM0048G06A	Rod Bead-Breaker Cylinder	
20	1	ST0024686	Ring For Rod Guide D.20	EAC0078G18A

Ref	Qty	Part Number	Description	
21	1	ST0001683	Seal, Lip I.D.20 O.D.36 Th.8 On Shaft	8-09614
22	1	ST0001684	Retainer-Seal D20	EAC0078G10A
23	1	8-10014A	O-Ring I.D.183.82 x 2.62	
24	2	ST0001470	Ring-Piston, Bead Breaker	EAC0078G34A
25	2	ST0001415	Seal - Lip N D.184	8-10114A
26	1	1-20433A1	Nut-Lock M14 6S White Zinc	
27	8	1-1748	Washer Shakeproof D8	
28	8	1-15933A	Nut-Hex M8 - 1.25mm	1-11733
29	1	EAS2068G62A	Cylinder Chamber	
30	1	EAL0383G03A	Plate Cylinder D.E.	
NS	1	EAK0306G19A	Cylinder Seal Kit includes items #9, 15, 18, 20, 21, 22, 23, 24, 25	

# Bead Breaker Assembly

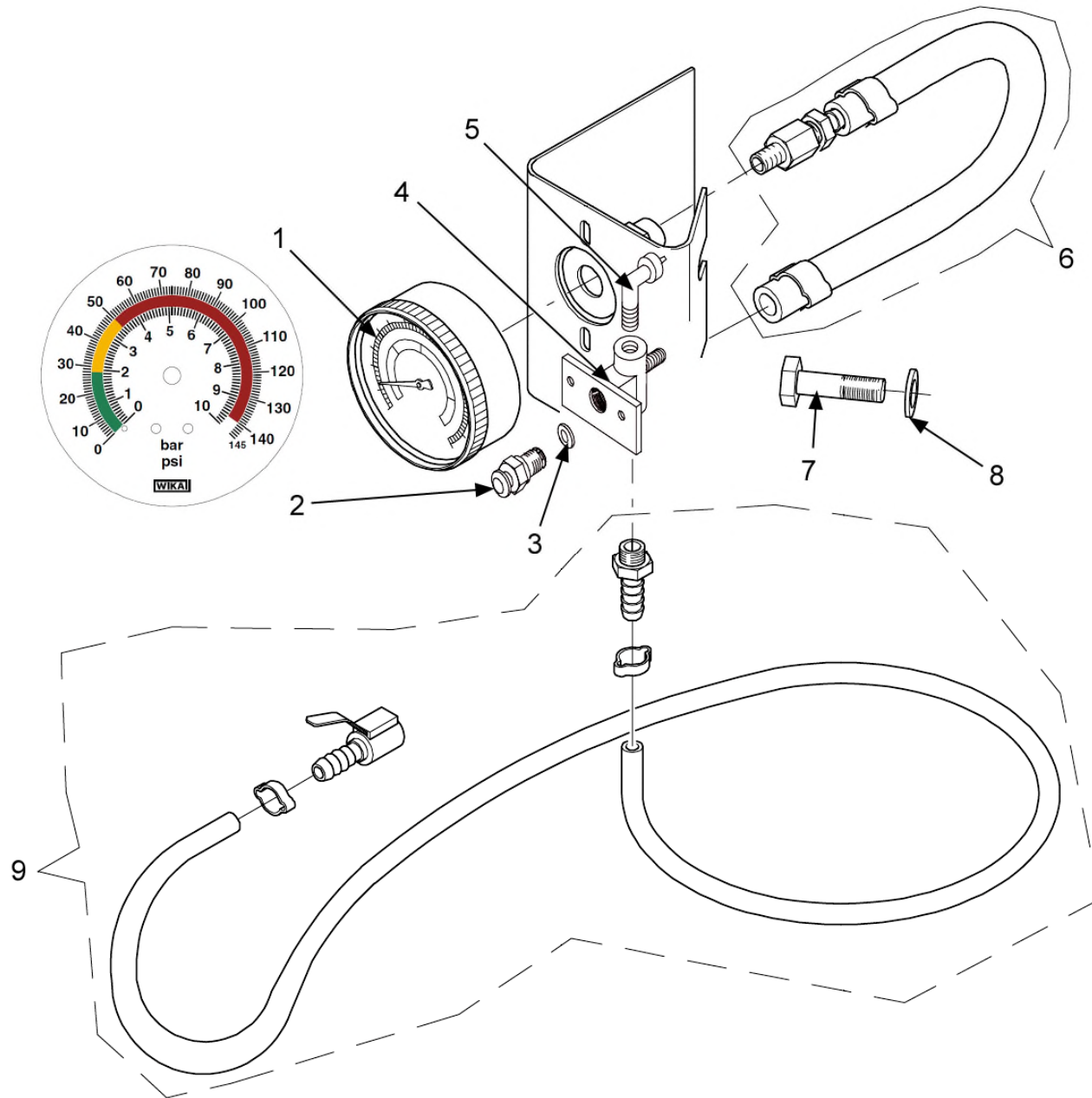
From April 2018 (78BDMxxx) to Present



Ref	Qty	Part Number	Description	
1	1	EAA0329G49A	Tc 22" Bead Breaker Cylinder	EAA0377G31A
2	1	ST0001924	Fitting-St 6X8 1/8	1-11379A
3	1	EAM0048G07A	Rod Bead-Breaker Cylinder	EAM0085G80A
4	1	1-20179A	Fitting "L" 6X8	
5	1	EAK0306G16A	Screws And Bolts For Bead Breaker	
6	1	EAK0306G19A	Seals For Bead Breaker Cyl.	
7	1	EAA0338G44A	Complete Bead Breaker Arm	
8	1	ST4025385	Arm Support, Bead-Breaker Support	EAS2108G27A
9	1	EAA0328G72A	Pin - Lock	
10	1	ST4022408	Extension-Arm,B/Breaker	EAS2087G90A
11	2	ST7021329	Washer 14mm	1-5246
12	1	ST4021305	Blade, Beadbreaker	EAS2087G93A
13	1	EAC0078G04A	Handle-Rubber	
14	1	1-22609	Screw Tcei M14X110 8.8	
15	1	ST7020409	Nut-S.Lock,Low- M14	1-10433

Ref	Qty	Part Number	Description
16	1	EAK0306G20A	Fulcrum Kit For Bead Breaker Arm
	1	1-02138A	Ring Nut Metal S Lock M20
	1	EAM0086G16A	Bead Breaker Arm Pin
17	1	EAK0306G23A	Fixing Kit For Bead Breaker Arm
18	1	EAM0067G69A	Spring-Recall Arm, Bead Breaker
19	2	EAM0067G34A	Screw,Fitting- Cylinder B/Break
21	1	EAS2097G96A	Bead Breaker Washer
22	1	EAC0097G51A	Washer - Shock Absorber

# Complete Assembly EAA0332G46A





Ref	Qty	Part Number	Description
1	1	8-06820A	Gauge-Air BAR / PSI
2	1	EAA0328G57A	Bleeder Valve
3	1	EAM0043G64A	Washer, Bleeder Valve
4	1	EAC0078G59A	Body Bleeder Valve
5	1	1-11479A	Fitting - L 6 x 8 1/8
6	1	EAH0049G12A	Hose - Gauge Fitting
7	2	1-32501A	Screw 8 x 16
8	2	1-10041	Washer D8



Notice: The information contained in this document is subject to change without notice. Hofmann makes no warranty with regard to this material. Hofmann shall not be liable for errors contained herein or for incidental consequential damages in connection with furnishings, performance, or use of this material.

309 Exchange Ave  
Conway, AR 72032  
501-450-1500

---

Monty 1625 SmartSpeed Spare Parts List

EEWH748B3\_TS

DSS

01/2024