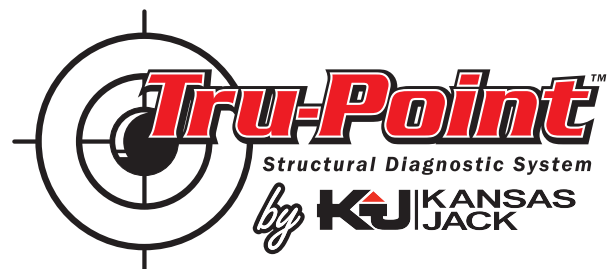


COMPUTERIZED MEASURING SYSTEM



FAST, EASY, PROFITABLE

The Tru-Point is a camera-based measuring system that delivers fast diagnostic readings that improve your shop's productivity. The portable design, advanced software and ease of use makes it a powerful tool for estimating & light repairs. Shops find that the Tru-Point pays for itself by identifying hidden repairs and improving estimating accuracy.

The Tru-Point will enable you to:

- **Set up in under 1 minute**
- **Measure all critical dimensions on both upper and lower body**
- **Train everyone in your business to estimate quickly**
- **Find hidden damage to improve estimating accuracy and profits and reduce costly comebacks**

- **MAKE MORE MONEY!**



Camera System = Incredible Accuracy

- The portable camera CCD camera system captures measurements from the hand-held probe as the technician measures control points
- Capture all critical measurement points, including:
 - *Body Openings*
 - *Roof Lines*
 - *Wheel Base*
 - *Underbody*
 - *Ball Joints*
 - *Pillars*
 - *Suspension*
 - *Upperbody*
- Identify issues that may affect wheel alignment
- Rely on easy-to-use software to guide thru the measurement points as needed

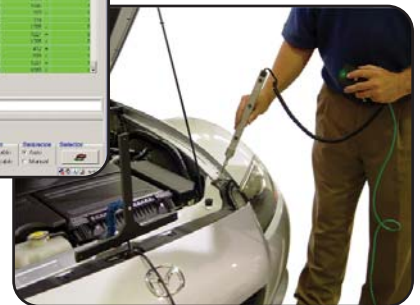
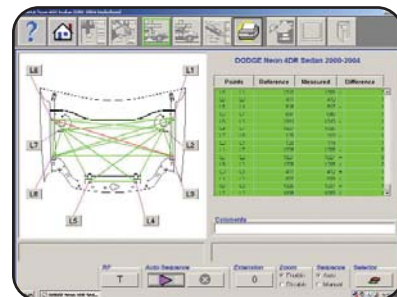


HOW THE TRU-POINT WORKS

- The Tru-Point is rolled into place anywhere in the shop
- The technician enters the vehicle information, selects the area to be measured in either XYZ, point-to-point or comparative modes
- The technician measures all relevant points by probing them in sequence with prompts from the software
- The software can be set in automatic or manual mode, depending on the technician's preference. Automatic mode guides the technician from point to point
- The measurement results are then compared to comprehensive manufacturer specifications. Any out-of-spec measurements are identified with color-coded results including deviations
- The Tru-Point identifies hidden damage to improve estimating and boost profits dramatically
- An easy-to-understand report alerts the technician to problem areas, and pre and post repair documentation can be provided to the insurance company
- Estimating accuracy is improved as time required to fix hidden issues is included and backed up with measurement details



Lower Body and Upper Body measuring is done with a single hand-held probe (no bridges)



Point-to-Point underhood measuring is made simple with pinpoint visuals provided by system software

HOW THE TRU-POINT PAYS FOR ITSELF

Increased Profit Hours Per Vehicle

Average Measuring Time Paid Out by Insurance Company	2.0 hours
Actual Tru-Point Measuring Time	-.5 hour
Additional Measuring Hours Per Vehicle	1.5 hours
Additional Billable Repair Time for Hidden Issues Found by Tru-Point	2.0 hours
Additional Measuring Hours Per Vehicle	+ 1.5 hours
Total Additional Hours Per Vehicle	3.5 hours

Increase Your Monthly Profit Hours

Number of Vehicles Per Month	10.0	15.0	20.0	25.0
Total Additional Hours Per Vehicle	x 3.5	x 3.5	x 3.5	x 3.5
Total Hours Per Month	35	52.5	70	87.5

Tru-Point Generates Serious Profits

Total Hours Per Month	35.00	52.50	70.00	87.50
Shop Rate (Per Hour)	x \$50.00	x \$50.00	x \$50.00	x \$50.00
Total Profits Per Month	\$1,750	\$2,625	\$3,500	\$4,375

SPECIFICATIONS

Tru-Point - EECR903A

ITEM	DESCRIPTION
State-of-the-art Dell® PC	80GB Hard Drive (min.), 1GB RAM, Windows Operating System, Floppy/DVD Drives, Optical Mouse, Keyboard
Monitor	17" Color LCD Flat Screen
Printer	Color Ink Jet
Installation/Training	On-site installation and training
Vehicle Specifications	1 year specifications included