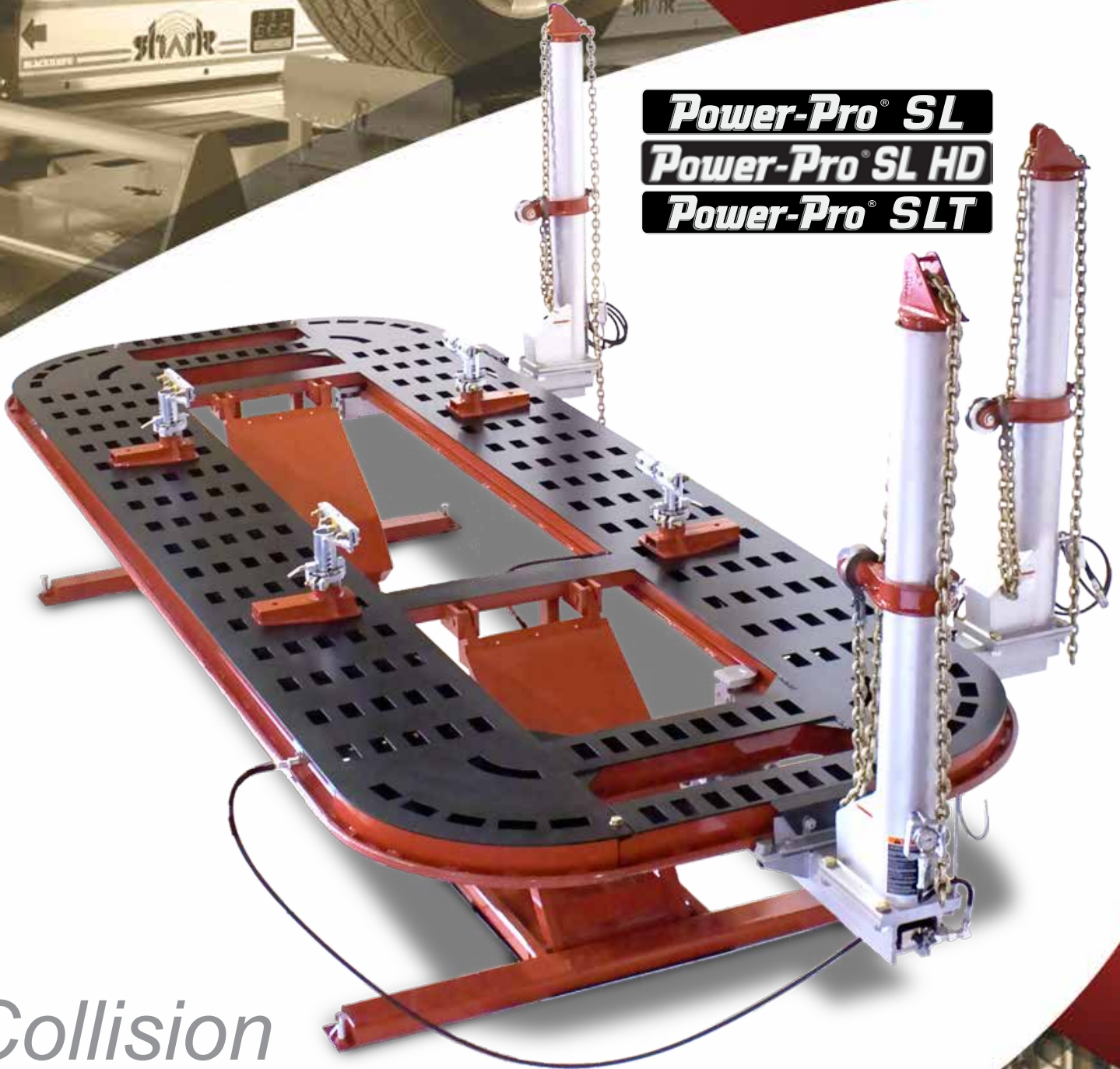


BLACKHAWK

Power-Pro[®] SL
Power-Pro[®] SL HD
Power-Pro[®] SLT



*Collision
Frame Racks*

Power & Performance

The Power-Pro SL rack offers features designed specifically for today's collision repair business. To assure maximum productivity, the rack includes an extended-height lifting capability for easier access to the vehicle. The open front and rear improves accessibility to the vehicle for repairs. The Power-Pro SL incorporates a faster pinch-weld anchoring system with fewer bolts to secure it to the rack platform and includes more chain tie-downs for efficient and timely vehicle tie backs.



Includes Light-Weight,
Steel Ramps with Handles

Power-Pro® SL HD

Power-Pro 3000 SL HD
3-Tower Configuration
BH9014233



Specifications

	Power-Pro 2000 SL	Power-Pro 3000 SL	Power-Pro 3000 SL HD
Rack Length:	20'	22'	22'
Rack Max. Length (with towers):	24' 1"	26' 1"	26' 11"
Width of Rack:	88"	88"	92"
Width of Rack (with towers):	12' 2"	12' 2"	12' 6"
Width of Treadway:	26.5"	26.5"	28.5"
Center Opening Width:	35.5"	35.5"	35"
Maximum Overall Height (towers down):	9' 10"	9' 10"	9' 10"
Maximum Overall Height (towers extended):	10' 8"	10' 8"	10' 8"
Minimum Overall Height (towers down):	7' 4"	7' 4"	7' 4"
Minimum Overall Height (towers extended):	9' 8"	9' 8"	9' 8"
Tie-Downs:	222	244	244
8 Working Heights:	12" up to 42"	12" up to 42"	12" up to 42"
Lifting Capacity:	9,000 lbs	9,000 lbs	12,000 lbs
Pulling Capacity:	10 ton	10 ton	10 ton
Power Requirement:	120V, 1Ph, 60Hz	120V, 1Ph, 60Hz	120V, 1Ph, 60Hz

Power-Pro SL & SL HD Features



Electric-Hydraulic Couplers

Ten quick-connect electric-hydraulic couplers are conveniently located around the rack for efficient tower connections or for auxiliary hydraulic repair accessories. The couplers provide for a positive seal and allow for a safe, clean operating environment for your technicians.

Working Heights

Eight working heights from 12" to 42" provide for one of the lowest working heights in the market. Adjustable working heights provide flexibility in properly positioning the vehicle at an optimum working height for ultimate productivity boosts!



Electric Pump

The electric pump is elevated off of the ground in a portable cabinet which can be easily positioned around the frame rack. Pendant cord easily stores inside the enclosure when not in use.



Tower Gauges

Water-filled pressure gauges can be adjusted to provide the technician with the best line of sight when making 10 ton pulls at the hook.

Double Hydraulic Ram Setup Front & Rear (SL HD Only)

Provides 12,000 lb lifting capacity



Versatile & Productive

For those customers looking same features and benefits found on the SL series frame rack but in an air tilt version, Blackhawk Power-Pro SLT series drive on racks will provide the versatility you are looking for.

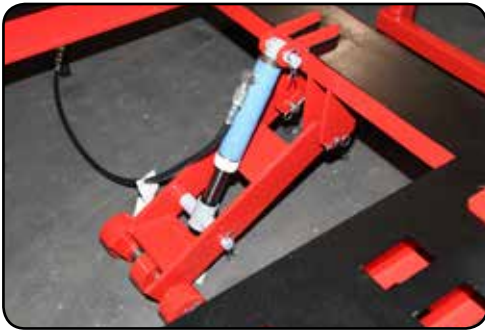
Power-Pro® SLT



Specifications

	Power-Pro 2000 SLT	Power-Pro 3000 SLT
Rack Length:	20'	22'
Rack Max. Length (with ramps):	21' 6"	23' 6"
Rack Max. Length (with towers and ramps):	24' 4"	26' 4"
Width of Rack:	88"	88"
Width of Rack (with towers):	12' 2"	12' 2"
Width of Treadway:	26.5"	26.5"
Center Opening Width:	35.5"	35.5"
Overall Height (towers down):	8' 4"	8' 4"
Overall Height (towers extended):	9' 2"	9' 2"
Tie-Downs:	222	244
Working Height:	22"	22"
Pulling Capacity:	10 ton	10 ton
Power Requirement:	AIR	AIR

Power-Pro SLT Features



Lifting Power

10 ton hydraulics provide you with more than enough strength to pick up the vehicles you will encounter.



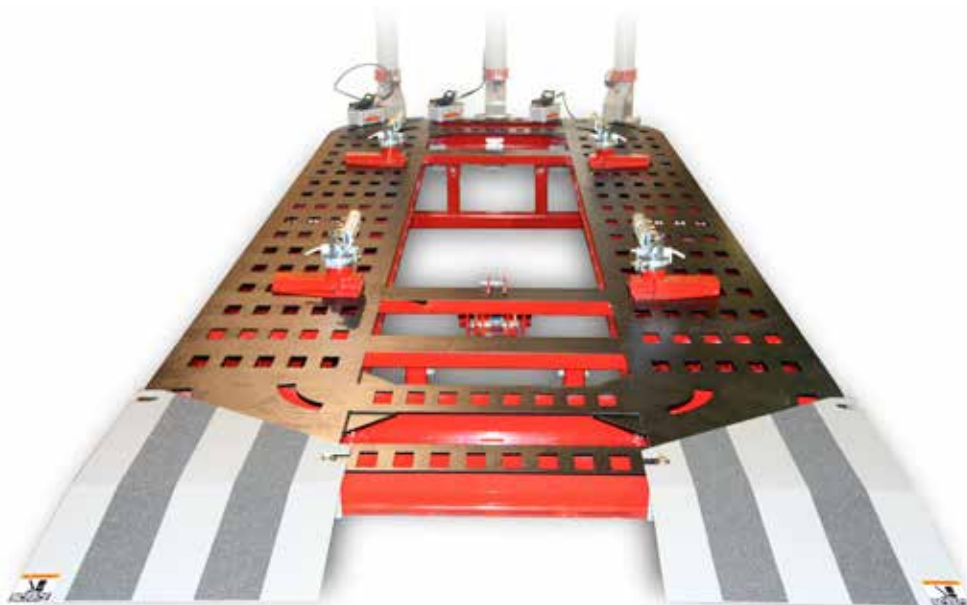
Quick Loading

The Blackhawk Power-Pro SLT's removable drive-on ramps coupled with the platform hydraulic tilt feature facilitates easy drive on vehicle loading.



Air Hydraulics Pumps with Guages

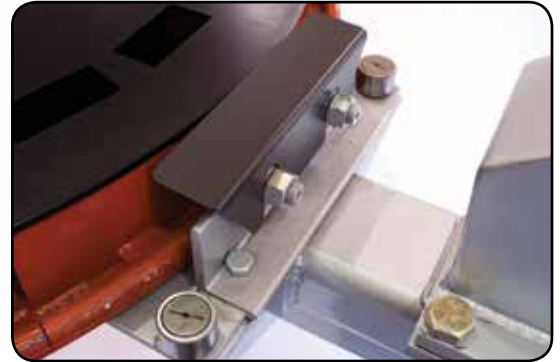
Fluid filled gauges provide for reliable pressure readings at the hook.



Power-Pro SL/SL HD/SLT Features

Towers with Integrated Bearings

Towers circumnavigate the rack platform on six bearings for a smooth effortless operation.



Infinite Positioning of Pull Collars

Variable-position pull collars provide for unlimited positioning for the correct alignment with the pull being made.



Pinch-Weld Clamp

Pinch-Weld Clamp base secures to the rack with a single bolt reducing your vehicle set-up times.

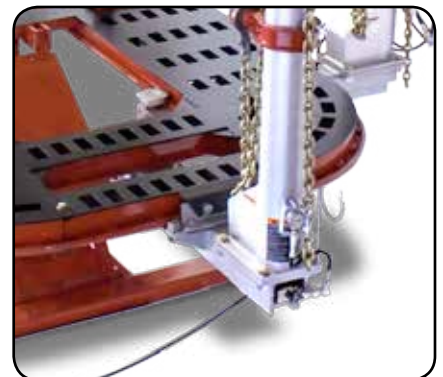


Bed Liner Top Coat

The deck surface is prepared with a bed liner top coat for durability and a non slip surface.

Front and Rear Removable Cross-Members

Perform a front-end pull removing damage, and then remove the cross-member to gain unrestricted access to the vehicle.



Optional Accessories



Vehicle Loading Package

9020030 (Includes: winch, wheel stands, car dollies, and 2 bag air jack)



Pushing Post with Ram

Power-Pro SL 9033123
Power-Pro SL HD 9025306

Pushing Post with Ram and Pump

Power Pro SLT 9025018



Overhead Pull with Collar

9025050A



Light Duty Frame Anchoring

SL59319



Down Pull

9033160



Truck Tie-Down Board

9020026 (Includes: 4 chain tighteners, 2 GM R hooks, 2 Ford T hooks, 2 Chrysler S hooks, 2 double grab hooks, 4 trac hooks, 4 4'x13/32 chains with grab hooks, 4 6'x13/32 chains with grab hooks)

Features and Benefits



Light-weight Drive-on/Drive-off Ramps

Provide drive-through capability
(SL/SL HD Only)

Specialty Frame Anchoring Options

For BMW, Mercedes, Honda & frame vehicles

From 222 to 244 Tie-Downs

Efficient and timely vehicle tie-back, just drop the chain through deck and secure

Front & Rear Removable Cross-Members

Gain complete access to vehicle for repairs

Front & Rear Wheel Chocks

Prevents forward and backward movement of the vehicle

Quick-Connect Hydraulic Couplers

Allowing for a safe and clean work space

One-Bolt Pinch-Weld Base Clamping

Reduces vehicle setup time

Infinite-Positioning of Pull Collars

For the correct alignment of the pulls

Working Heights (SL/SL HD Series Only)

Eight working heights from 12" to 42"



Power-Pro[®] SL

Power-Pro 3000 SL
3-Tower Configuration
BH9014223

Available Configurations

	Part Number	Number of Towers	Shipping Weight
Power-Pro 2000 SL	BH9014202	2	6,200 lbs.
Power-Pro 2000 SL	BH9014203	3	6,800 lbs.
Power-Pro 2000 SL	BH9014204	4	7,400 lbs.
Power-Pro 3000 SL	BH9014222	2	6,620 lbs.
Power-Pro 3000 SL	BH9014223	3	7,220 lbs.
Power-Pro 3000 SL	BH9014224	4	7,820 lbs.
Power-Pro 3000 SL HD	BH9014232	2	9,000 lbs.
Power-Pro 3000 SL HD	BH9014233	3	9,600 lbs.
Power-Pro 3000 SL HD	BH9014234	4	10,200 lbs.

	Part Number	Number of Towers	Shipping Weight
Power-Pro 2000 SLT	BHT9014202	2	5,200 lbs.
Power-Pro 2000 SLT	BHT9014203	3	5,800 lbs.
Power-Pro 2000 SLT	BHT9014204	4	6,400 lbs.
Power-Pro 3000 SLT	BHT9014222	2	5,620 lbs.
Power-Pro 3000 SLT	BHT9014223	3	6,220 lbs.
Power-Pro 3000 SLT	BHT9014224	4	6,820 lbs.

Blackhawk · 309 Exchange Avenue · Conway, Arkansas 72032 U.S.A.
Fax: 501-450-2085 · Toll Free: 1-877-482-4866 · www.snaponequipment.com

Blackhawk · 6500 Millcreek Drive · Mississauga, Ontario L5N 2W6
1-800-362-4608 · www.blackhawkcr.com