



Model 442120Q



Reaching New Heights In Productivity, Durability & Dependability

Four-Post
Alignment Lifts

JohnBean®

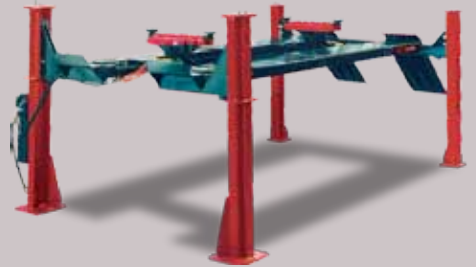
John Bean 12K 4-Post Lifts

Alignment level at twenty-one positions of flat deck version for multi-purpose vehicle servicing.

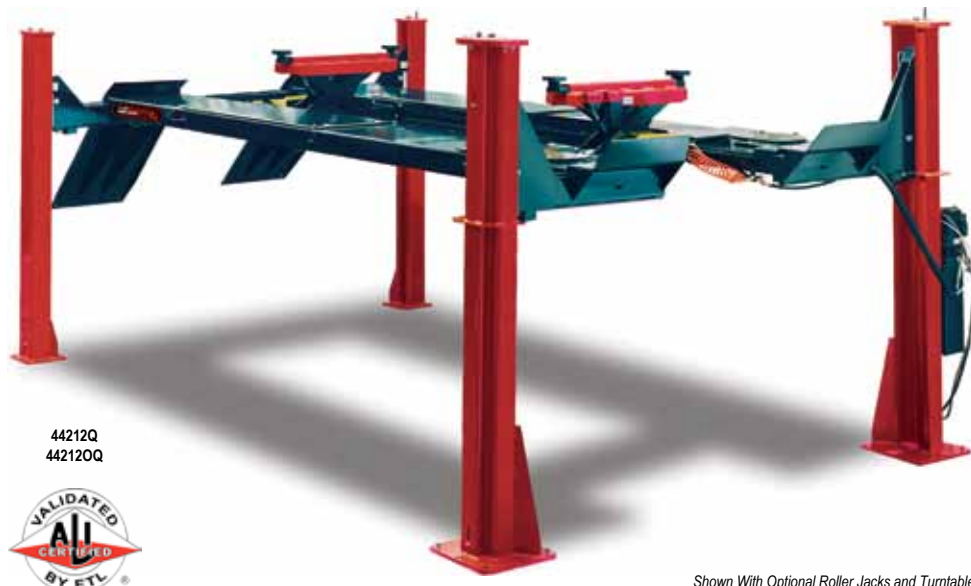
Factory-installed air kit for optional roller jacks and air tools.

65" full-floating rear slip plates for longer wheelbase potential.

Triple Safety System: Safety locks in each column with single-point release, auto-engaging mechanical drop locks, and velocity fuses on all hydraulically-operated components.



- Patented roll-formed front towers with Dura-Glide lifting system – integrates low-wear, Ultra-High Molecular-Weight polyethylene glide blocks to ensure long-term alignment accuracy.
- 172" or 210" wheelbase models available.
- Heavier $\frac{3}{16}$ " 6 x 37 pre-stressed cables for long life and added safety.
- 24" Pro-Style decks for wide-track vehicles and no deck adjustment.
- Hidden lifting cylinder under the deck adds accessibility and no vehicle door damage.
- Larger 8" cast iron pulleys and fiber-wound bushings for less wear and longer cable life.
- Multi-position nylon polyethylene slip plate cage with Delrin™ bearings for improved wear and serviceability.
- Longer 52" approach ramps provide gentle drive-on angle for low-profile vehicles.
- Optional heavy-duty premium turntables increase alignment profitability.
- Certified to the current ANSI/ALI Lift Standard
- Integrated anti-sway system



44212Q
442120Q



Shown With Optional Roller Jacks and Turntables

John Bean 14K 4-Post Lifts

John Bean's 4 post lift gives you 14,000 lbs of heavy duty lifting capacity in a compact package. No need for multiple lifts. Whether it is a micro car or a heavy duty pick-up, the 14k has four wheel alignment capabilities that cover a full range, from 70" to 158", of vehicle requirements.

Fully raised height of 74" to the runway surface with 27 alignment level locking positions, providing peak performance and safety for all technicians.

"Super-Glide" full floating flush mounted rear slip plates - saves time with no need for repositioning turn plates to accommodate longer or shorter vehicles.

With the use of AMT (Advanced Monitor Technology) developed by the leader in alignment lifts, all John Bean lifts go through unparalleled durability testing, fully loaded and tested under the most adverse conditions.

- Industry proven roll formed front columns and traverse beam design reduces critical loading - ensuring alignment accuracy.
- The open front design allows technicians clear access to suspension, brake, and alignment components making adjustment and repairs simple.
- Innovative cable break lock uses reliable compression spring activation compared to traditional tension springs that stretch and deform, requiring service or replacement.
- 22" wide "Pro-Style" runways save time when loading vehicles of any track width.
- Under runway mounted hydraulic cylinder with innovative pivoting end ensures direct alignment of the primary lifting components; improving performance while reducing maintenance.
- Large 10" diameter pulleys reduce bend radius reducing stress on cables, minimizing cable breakage.
- Fiber wound bushings excel under high pressure, low rev. conditions and are self lubricating - no need to oil bearings, eliminating downtime due to seized bearings.
- Low drive on height of 7" allows for shorter approach ramps while maintaining easy approach angle.



EELR705A



John Bean 18K 4-Post Lifts



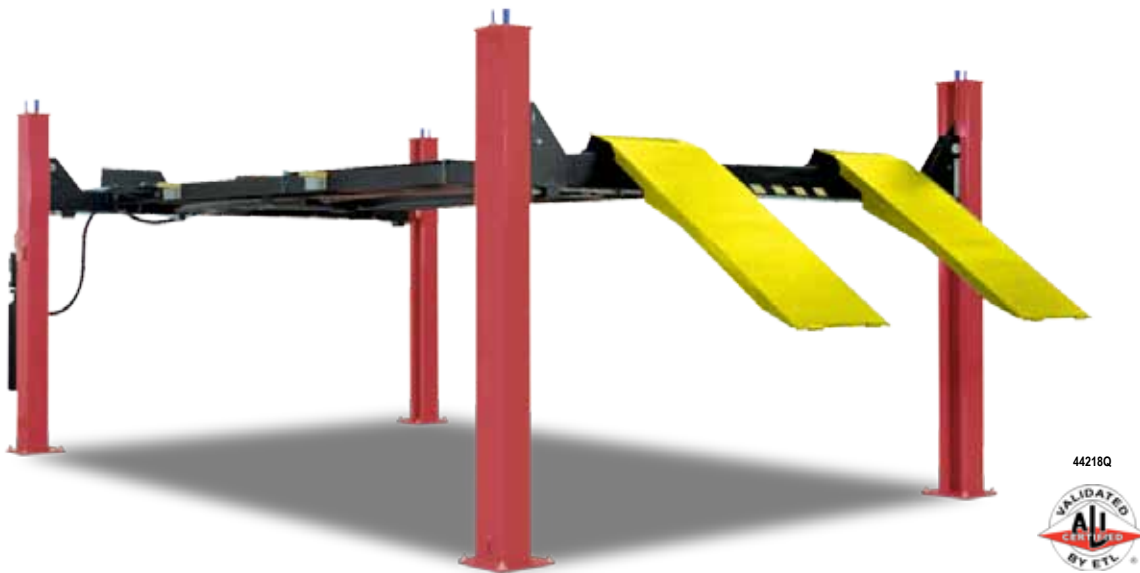
Alignment level at 21 positions or flat deck version for multi-purpose vehicle servicing.

Factory-installed air kit for optional Roller Jacks and air tools.

65" full-floating rear slip plates for longer wheelbase potential.

Triple Safety System: Safety locks in each column with single-point release, auto-engaging mechanical drop locks, and velocity fuses on all hydraulically-operated components.

- Patented roll-formed front towers with Dura-Glide lifting system – integrates low-wear, Ultra-High Molecular-Weight polyethylene glide blocks to ensure long-term alignment accuracy.
- Built-in anti-sway system.
- Heavier $\frac{5}{16}$ " 6 x 37 pre-stressed cables for long life and added safety.
- 24" Pro-Style decks for wide-track vehicles and no deck adjustment.
- Hidden lifting cylinder under the deck adds accessibility and no vehicle door damage.
- Larger 8" cast iron pulleys and fiber-wound bushings for less wear and longer cable life.
- Multi-position nylon polyethylene slip plate cage with Delrin™ bearings for improved wear and serviceability.
- Longer 52" approach ramps provide gentle drive-on angle for low-profile vehicles.
- Optional heavy-duty premium turntables increase alignment profitability.
- 87" to 143" wheelbase for 4-wheel alignment and 210" wheelbase for 2-wheel alignment.



44218Q



Choose The Right Lift For The Job



Micro Cars - EELR507A

Small Cars - 4412405ST, 44212Q, EELR507A
44212OQ, 44212OQE



Trucks - 44212OQ, 44212OQE, EELR507A,
44218Q



Motor Homes - 44218Q

Model	Capacity	Lift Pad Height	Raised Height	Lowered Height	Shipping Weight
JBC216	6,000 lbs.	1", 3", 6"	15" - 18" - 21"	3 3/4"	330 lbs.
EELR508A	7,000 lbs.	1 3/4", 3", 4 1/2"	14 15/16" - 16 7/16" - 17 15/16"	3 5/16"	290 lbs.
JBCWT9	9,000 lbs.	1 1/2", 6"	10" - 13" - 19"	4 3/4"	320 lbs.

EELR508A



Roller Jacks

- Interchangeable fast fit adapters for brake, tire, and alignment services
- Air over hydraulic controls - requires only 90-120 PSI air pressure
- No requirement to swing away for storage
- High lifting height
- Low-profile



Optional Turnplate Mounting Kit*

- Enables roll forward & roll backward for V3D Aligners
- Part #EAK0277J39A



Rear Slip Plates**

- Durable Construction
- Multi-position Capability



Optional Premium Turnplates

- Part #EAK0289J06A



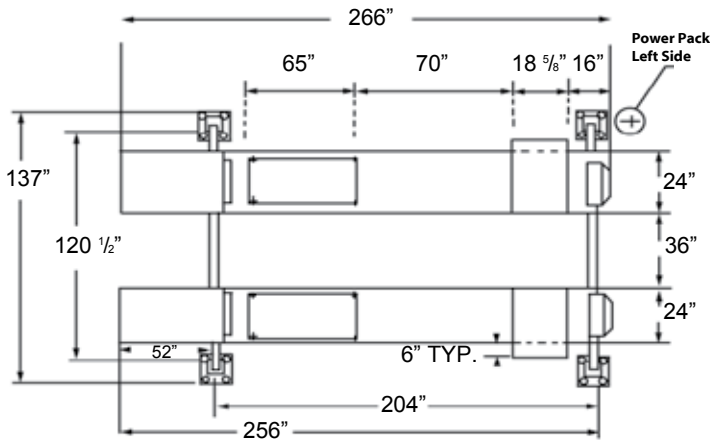
Roll-Formed Steel Columns***

- Dramatically improves column strength

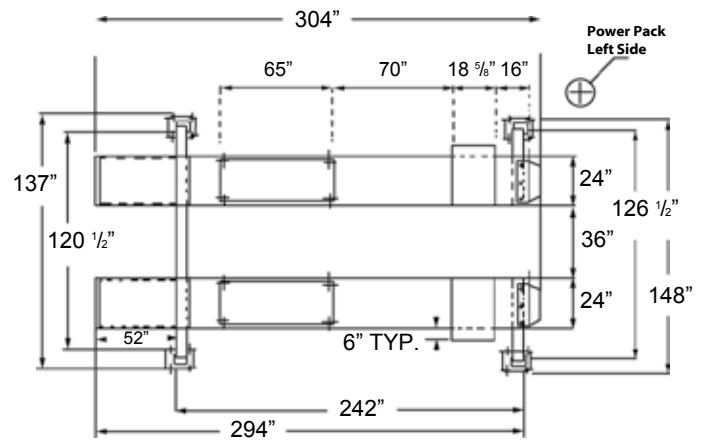
* Option not suited for EELR507A lift model. Plates are mounted flush as standard

** Flush mounted rear slip plates available on EELR507A lift model only

*** All columns on 18K lifts. Front columns only on open-front 12K/14K lifts.



44212Q



44212QE

Contact Snap-on Technical Support for additional information on product bay layouts not shown.

SPECIFICATIONS

Model	4412405ST	44212Q	442120Q	442120QE	EELR507A	44218Q
Capacity	12,000 lbs.	12,000 lbs.	12,000 lbs.	12,000 lbs.	14,000 lbs.	18,000 lbs.
Front Accessibility	closed	closed	open	open	open	closed
Roller Jack Model	JBC216	JBC216	JBC216	JBC216	EELR508A	JBCWB9
Max. 4 Wheel Alignment Wheel Base	144"	144"	144"	144"	70" - 158"	144"
Max. 2 Wheel Alignment Wheel Base	154"	172"	172"	210"	188"	210"
Deck Service - General Service Wheel Base	164"	182"	182"	220"	205"	220"
Runway Width	24"	24"	24"	24"	22"	24"
Distance Between Runways	36"	36"	36"	36"	40"	40"
Overall Width	137"	137"	148 1/4"	148 1/4"	140 1/2"	152"
Overall Length	235"	266"	266"	304 9/16"	269 1/2"	304 7/8"
Lifting Height	71"	71"	71"	71"	74"	71"
Lowered Height	10"	10"	10"	10"	7"	10"
Lifting Time	60 seconds	60 seconds	60 seconds	60 sec.	70 sec.	64 sec.
Shipping Weight	4,470 lbs.	4,470 lbs.	4,913 lbs.	5,690 lbs.	4,850 lbs.	6,232 lbs.
Power Requirements	230V, 1 Ph	230V, 1Ph	230V, 1Ph	230V, 1Ph	230V, 1Ph	230V, 1Ph

The World's Largest Wheel Service Equipment Company
Snap-on EQUIPMENT

Snap-on Equipment / 309 Exchange Avenue / Conway, Arkansas 72032 U.S.A.
 Fax: 501-450-2085 / Toll Free: 1-800-362-4618 / International: 501-505-2739
www.snaponequipment.com/johnbean

John Bean Canada / 6500 Millcreek Drive / Mississauga, Ontario L5N 2W6
 Customer Service: 1-800-362-4608 / Fax: 905-826-7800
www.johnbean.ca

