



# 14K Scissor

Alignment Lift



**Surface Mount**  
(Model No. 4814605AF)

***Wide Open Access Front To Rear!***

# 14K Scissor Alignment Lift



## Efficient, Safe, Reliable

Get maximum productivity out of your available bay space. John Bean's 14K Scissor racks are the best option for alignments as the vehicle's wheels are more accessible than with 4-post lifts. Scissor racks also take up less floor space. Five scissor lifts fit into the same operating space as four 4-post lifts.

### **Common Safety Features:**

- ★ Three-tier safety system leverages hydraulic velocity fuses, pressure sensitive valves and visual/audible signals for the industry's best safety
- ★ Large, twin-interlocking serriform mechanical safety racks provide 18 different level and locked positions for safe, secure operation
- ★ Totally open access between the runways front to rear
- ★ ALI/ETL certified



### **Common Features and Benefits:**

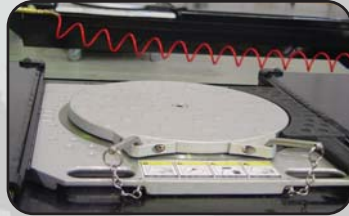
- ★ Open access between runways allows for easy alignment adjustments
- ★ Widest decks in the industry make getting on and off the rack - and positioning the vehicle for alignments - faster and easier
- ★ Advanced lifting system has powerful cylinders to maintain a level position at any point from the floor up to 73"
- ★ Durable 72", **Right Side Up** flush-mount, maintenance-free slip plates. Strategically positioned openings in the runway quickly disperse water & dirt for maintenance-free, reliable performance
- ★ Re-inforced, 26" wide **Coach** style runways provide alignment accuracy for cars and dual-wheel trucks
- ★ 50" long approach ramps ease drive-on for low-profile vehicles
- ★ In-rack air kit, two roller jacks, full floating flush-mounted rear slip plates standard
- ★ Flush-mount also available



# 14K Scissor Alignment Lift



In-rack air kit for rolling jacks and air tools standard



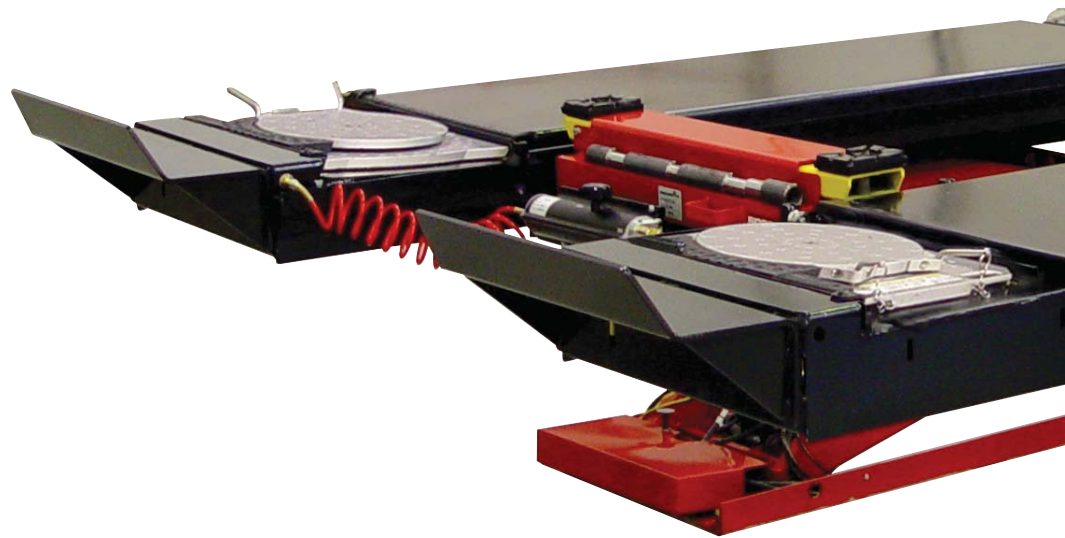
Optional stainless steel turnplates slide on polyethylene pads preventing deck scratching.



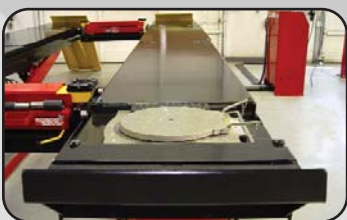
Durable 72" **Right Side Up** flush-mount, maintenance-free slip plates



Adjustable work step on each side for easy access to underhood and steering wheel



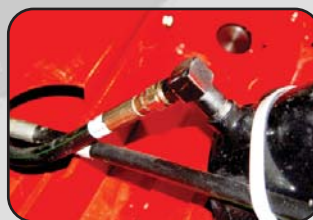
Re-inforced decks are 26" wide for superb alignment accuracy



Work step storage hidden under front of each runway



Three-tier safety system with air actuated mechanical locks, pressure sensing flow control valves and velocity fuses



Large, twin-interlocking serriform mechanical safety racks provide 18 different level and locked positions



# 14K Scissor Alignment Lift



***John Bean's 14K Scissor Lift will handle four-wheel alignment wheelbases up to 156", and two-wheel alignment wheelbases up to 188"!***



**Surface Mount**  
(Model No. 4814605AF)



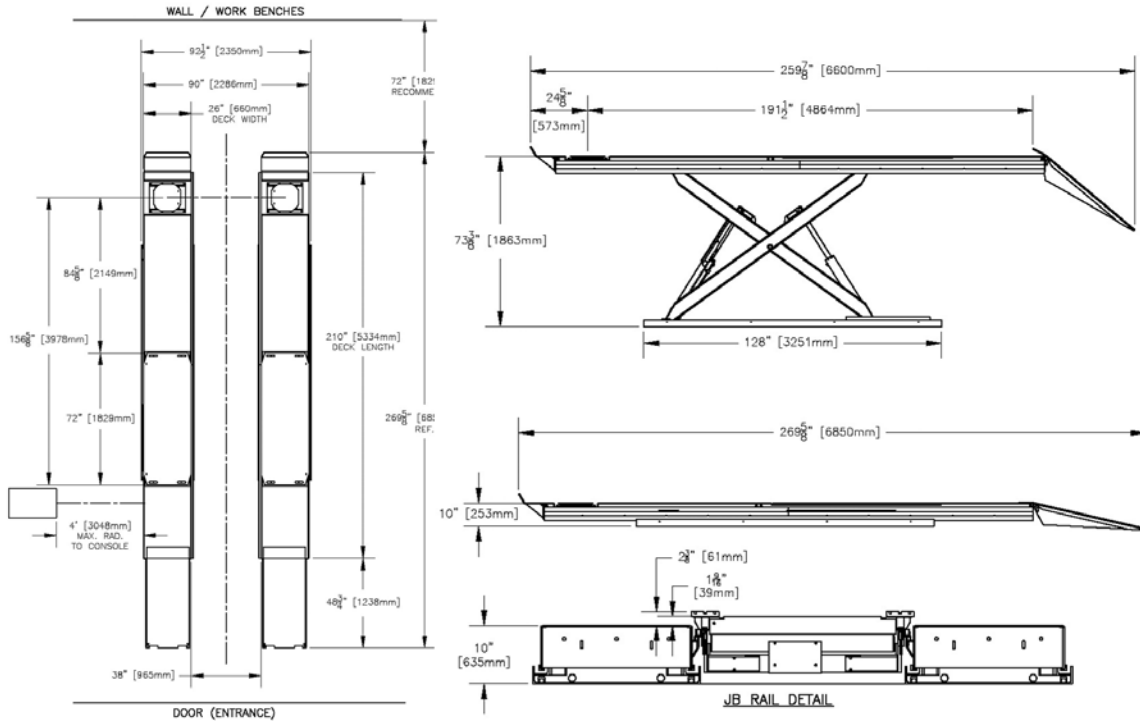
Flush Mount model  
available with optional  
drive-through capability.

**Flush Mount** (Model No. 4814605AFM)

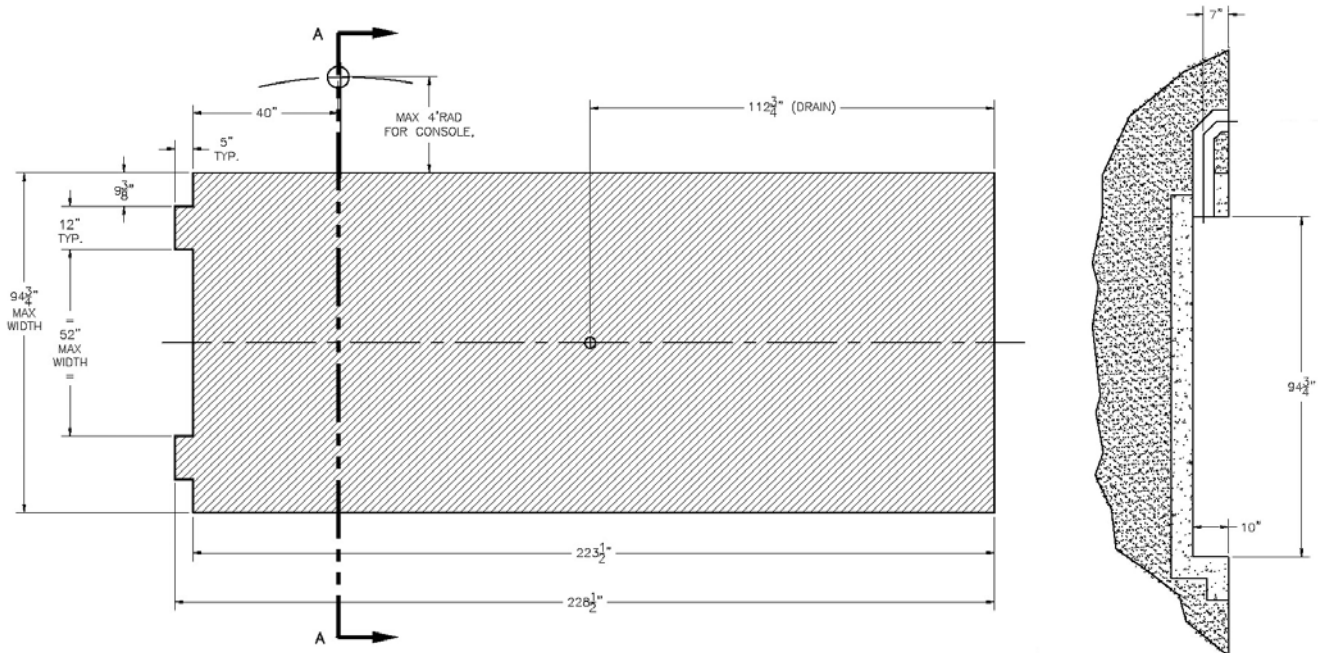
# 14K Scissor Alignment Lift



## Diagram Drawings



This diagram is for promotion illustration purposes only, and should not be used as installation instructions. Contact your local Equipment Sales Specialist if further information is needed.



This diagram is for promotion illustration purposes only, and should not be used as installation instructions. Contact your local Equipment Sales Specialist if further information is needed.  
 Layout subject to change without notice, request detailed layout drawing for pit construction.



# 14K Scissor Alignment Lift

Surface Mount  
(Model No. 4814605AF)

## SPECIFICATIONS

Maximum Capacity:	14,000 lbs.	6,300 kg
Overall Width:	92.5"	2,350 mm
Width Between Runways:	38"	965 mm
Overall Length: Surface Mount	269.625"	6,850 mm
Flush Mount	228.5"	5,804 mm
4-Wheel Alignment Wheelbase:	156"	3,962 mm
2-Wheel Alignment Wheelbase:	188"	4,775 mm
Service Wheelbase:	196"	4,978 mm
Deck Surface:	210" from front wheel stop to rear ramp	
Maximum Raised Height:	73.375"	1,863 mm
Minimum Lowered Height:	10"	254 mm
Operator Console Dimensions: (WxHxD)	25" x 45" x 17"	635 mm x 1,143 mm x 432 mm
Lifting Time (Fully loaded to 14,000 lbs.)	75 seconds	
Power Requirements (Standard):	230 Volts AC - 60 Hz - 1 Ph - 20 Amp	
Shipping Weight:	4,980 lbs.	2,264 kg

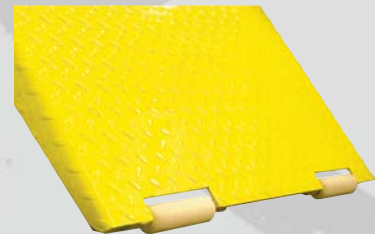
## FEATURES



Oversize roller balls (shown with slip plate removed) - Balls rotate on the underside of each 72" slip plate – not on deck surface. Strategically positioned openings in the deck under each slip plate quickly disperse water and dirt for maintenance free reliable performance.



7,000 lbs. rolling jack beam  
(Model Number JBC217)



Replaceable synthetic rollers on ramps cause less damage to floors and create less noise than conventional metal rollers.

## Snap-on Equipment

Snap-on Equipment / 309 Exchange Avenue / Conway, Arkansas 72032 U.S.A.  
Fax: 501-450-2085 / Toll Free: 1-800-362-4618 / Canada: 1-800-362-4608  
www.SnaponEquipment.com  
International: 501-450-1568