



Industrial-Strength Lifts For Industrial-Sized Jobs

Two-Post

Automotive Lifts

JohnBean™

Strong, Versatile, Safe

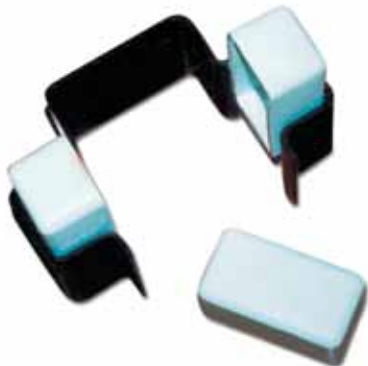
John Bean 2-Post Automotive Lifts give you the highest capacity with the best quality, features and versatility at the most reasonable cost of any North American manufactured lift.

All John Bean 2-Post Lifts:

- Feature single-point safety lock release for 2-hand lift lowering - keeps the operator safe while lowering the lift!
- Include mechanical safety locks for added safety
- Are assembled with industrial-strength columns for increased strength and durability
- Come with pre-loaded lift arms - straight even when loaded!
- Use dual pre-stressed equalizing cables - ensures level lifting!
- Are ALI Certified by ETL to ANSI standard ALCTV-2006
- **INCREASE YOUR PROFIT POTENTIAL!**



Heavy-Duty Construction For Increased Safety



Industrial-strength Columns

Increases carriage stability & uses glide blocks made from UHMW polyethylene to ensure a smoother gliding operation.



Fully Supported Arm Pins*

Prevents lifting arms from sagging. Nickel/zinc plated arm pins increase lifting arm's life span.



Bolt-on Gear-cut Arm Restraints*

Increases lifting arm stability.

* Model Specific. Visit www.snaponequipment.com or call your Local Sales Representative for more information.

10K 2-Post Combo

42010VSA (Symmetric and Asymmetric)

- Integrated symmetric/asymmetric design delivers 2 choices for optimum vehicle lifting
- Three-stage telescopic front arms provide maximum reach and vehicle coverage
- Mechanical safety locks at 17 operating positions
- Dual-function micro-switch activates vehicle height safety rod and increases life span of drive motor and cylinders
- Overhead beam reinforces lift structural integrity
- Stack pad style lift works with both cars and trucks (3" and 6" adapters included)



10K 2-Post

42010CS and 42010CS14 (Symmetric)

42010CA and 42010CA14 (Asymmetric)

- Steel cable pulleys with oil impregnated iron bushings reduce the need for maintenance and increase life of lift
- Mechanical safety locks at 17 operating positions
- Dual-function micro-switch activates vehicle height safety rod and increases life span of drive motor and cylinders
- Overhead beam reinforces lift structural integrity - 12' or 14'
- Stack pad style lift works with both cars and trucks (3" and 6" adapters included)
- Asymmetric configurations come standard with three-stage front arms providing maximum extended and retracted reach



42010CA



12K 2-Post

422012SS and 422012SS14 (Symmetric)



- Steel cable pulleys with oil impregnated iron bushings reduce the need for maintenance and increase life of lift
- Mechanical safety locks at 20 operating positions
- Dual-function micro-switch activates vehicle height safety rod and increases life span of drive motor and cylinders
- Overhead beam reinforces lift structural integrity - 12' or 14'
- Stack pad style lift works with both cars and trucks (3" and 6" adapters included)
- Optional two-position (12" or 24") bolt-on height extension kit available (JBC080)



15K 2-Post

4215000S16 (Symmetric)



- Single-point safety locks automatically re-engage when palm button is released
- Mechanical safety locks at 15 operating positions
- Cable-activated overhead safety switch
- Overhead beam reinforces lift structural integrity - 16.1' adjustable down to 14.5' if requested upon installation
- Low-profile telescoping arms with 3 sets of adjustable spindle pads. Includes 5" and 10" extensions
- Heavy-duty threaded arm restraints engage when lift is raised



18K 2-Post

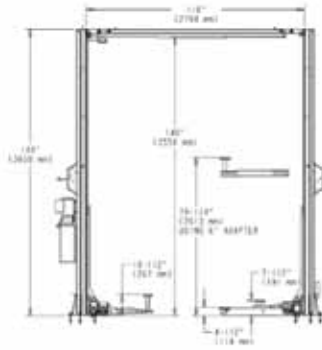
4218000S16 (Symmetric)



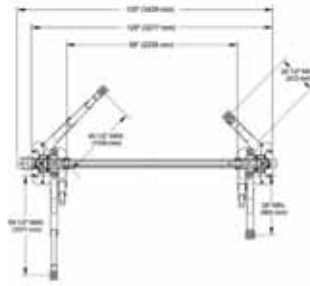
- Single-point safety locks automatically re-engage when palm button is released
- Mechanical safety locks at 15 operating positions
- Cable-activated overhead safety switch
- Overhead beam reinforces lift structural integrity
- Low-profile telescoping arms with 3 sets of adjustable spindle pads. Includes 5" and 10" extensions
- Optional low-lift rubber pad adapters available (JBC075)
- Heavy-duty threaded arm restraints engage when lift is raised

Complete Versatility

10,000 LB. CAPACITY

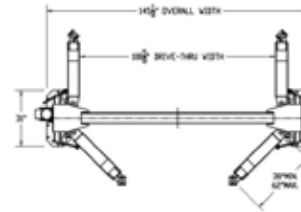


Model 42010VSA front view



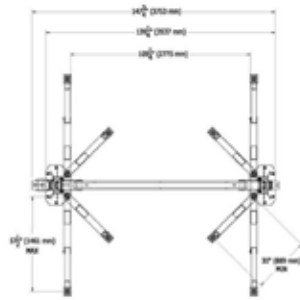
Model 42010VSA top view

18,000 LB. CAPACITY

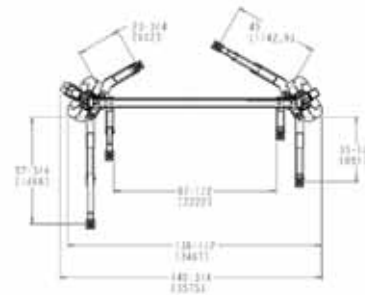


Model 4218000S16 top view

10,000 LB. CAPACITY

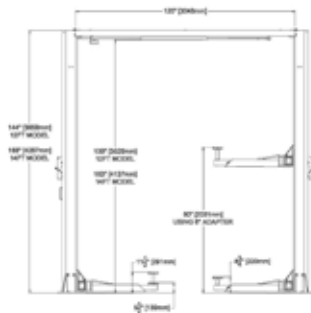


Model 42010CS top view

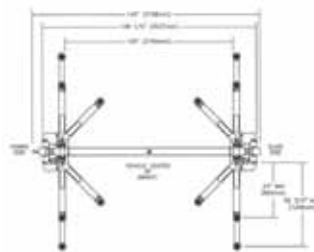


Model 42010CA top view

12,000 LB. CAPACITY

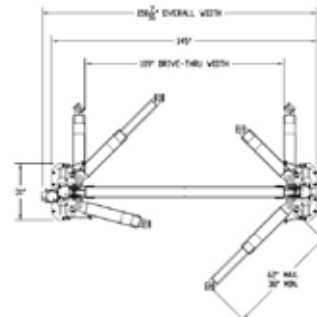


Models 422012SS & 422012SS14 front view



Model 422012SS top view

15,000 LB. CAPACITY



Model 4215000S16 top view

SPECIFICATIONS

	Capacity	Symmetric Or Asymmetric	Overall Width	Overall Height	Width Between Columns	Maximum Lifting Height*	Under-Bar Clearance	Drive-Thru Width	Shipping Weight	Lifting Time
42010VSA	10,000 lbs.	Both	135"	144"	110"	79 1/4"	140"	88"	1,500 lbs.	45 sec.
42010CS	10,000 lbs.	Symmetric	147 3/4"	144"	120"	79 1/2"	140"	109"	1,545 lbs.	45 sec.
42010CS14	10,000 lbs.	Symmetric	147 3/4"	168"	120"	79 1/2"	164"	109"	1,620 lbs.	45 sec.
42010CA	10,000 lbs.	Asymmetric	140 3/4"	144"	106 3/4"	79 1/2"	140"	87 1/2"	1,545 lbs.	45 sec.
42010CA14	10,000 lbs.	Asymmetric	140 3/4"	168"	106 3/4"	79 1/2"	164"	87 1/2"	1,620 lbs.	45 sec.
422012SS	12,000 lbs.	Symmetric	146"	144"	120"	80"	139"	109"	1,565 lbs.	60 sec.
422012SS14	12,000 lbs.	Symmetric	146"	168"	120"	80"	163"	109"	1,565 lbs.	60 sec.
4215000S16	15,000 lbs.	Symmetric	145"	193 1/8"	120 5/8"	81 5/8"	184"	108 5/8"	3,350 lbs.	70 sec.
4218000S16	18,000 lbs.	Symmetric	145 1/8"	193 1/8"	120 5/8"	81 5/8"	184"	108 5/8"	3,752 lbs.	70 sec.

All 2-Post Lift's standard Power Requirements are 230V, 1Ph, 60Hz. Other Power Requirement Configurations are available.

* With 6" adapters.

John Bean manufactures a complete line of automotive wheel service equipment.



Total Ride Performance System



Tilt-Tower Tire Changers



Brake Lathes

Snap-on Equipment / 309 Exchange Avenue / Conway, Arkansas 72032 U.S.A.
Fax: 501-450-2085 / Toll Free: 1-800-362-4618 / International: 501-505-2739
www.snaponequipment.com/johnbean

John Bean Canada / 6500 Millcreek Drive / Mississauga, Ontario L5N 2W6
Customer Service: 1-800-362-4608 / Fax: 905-826-7800
www.johnbean.ca

