

TOP **20** TOOLS
MOTOR
2008



The World's First Portable Imaging Aligner

Prism

Portable Imaging Alignment System

JohnBean™

Portable, Affordable Imaging Alignment

The award-winning Prism is the world's first alignment system to combine imaging alignment technology with portability. It provides dramatic productivity improvements and offers more features than conventional aligners – at a lower price. The Prism leverages a wireless communication system with Bluetooth™ technology, cordless pods powered by Lithium Ion batteries, and components made from lightweight magnesium. The Prism combines advanced technology and affordability to take your alignment business to the next level.

The Prism Imaging Alignment System will enable you to:

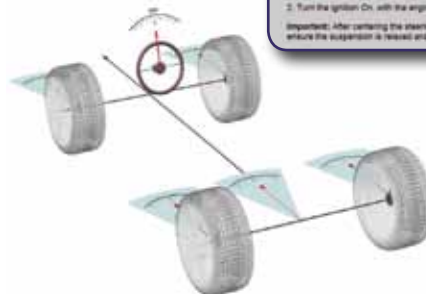
- Do alignments quickly from virtually anywhere in your shop
- Reduce the time required to perform corrective actions
- Rely on advanced, lightweight components that are designed with the technician in mind
- **MAKE MORE MONEY!**



EZ-Link™* Steering Angle Sensor (SAS) Reset

EZ-Link™ software alerts the technician of OEM service and maintenance procedures related to Electronic Stability Control and Electric Power Steering systems.

OEM instructions guide the technician through the process of resetting the steering angle sensors along with other sensors as required. EZ-Link™ includes manual as well as electronic resets.



⚠ Determine if this vehicle is equipped with Electronic Power Steering (EPS)

After replacing the power steering motor and module assembly, 2 procedures must be performed: Steering Position Sensor Calibration, Torque Sensor Calibration and Steering Tuning.

If replacing the steering column assembly only, the Steering Position Sensor and the Torque Sensor Calibration procedures must be performed.

The Steering Position Sensor and Torque Sensor Calibration procedures should also be performed after a suspension alignment.

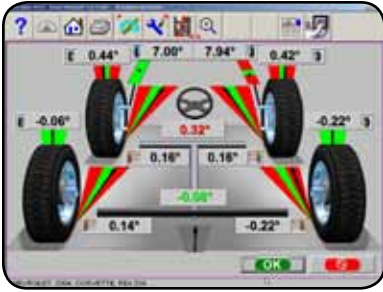
Caution: steering symptoms such as uneven return to center, poor center feel, uneven left/right assist, can be corrected by performing the Steering Position Sensor and Torque Sensor Calibration procedures.

The Torque Sensor Calibration:

1. Turn the Ignition OFF. Install the sensor tool.
2. Turn the Ignition On, with the engine OFF.

Important: After centering the steering wheel, remove hands and other objects from the steering wheel and ensure the suspension is released and no bias or uneven force is being applied to the steering system.

Intuitive Software and Robust Manufacturer Data



User-Friendly Interface

- Make technicians experts with easy-to-use graphics and job aids
- Use available step-by-step instructions as a guide for completing even the most complex tasks consistently - the first time



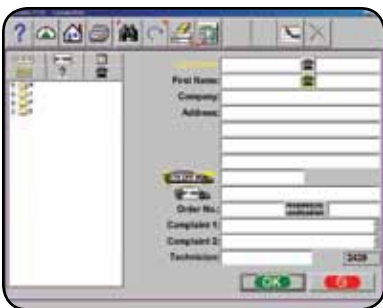
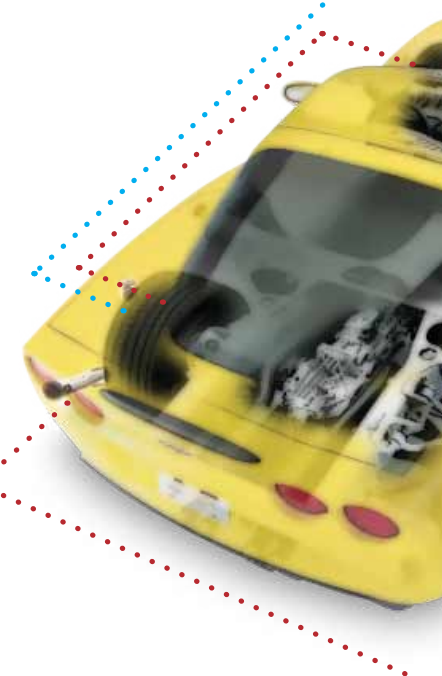
Manufacturer Specs

- Handle virtually any vehicle that comes in the shop
- Rely on a comprehensive manufacturer database that spans 25+ years



Color Customer Reports

- Enhance customer satisfaction with personalized reports showing readings before and after service



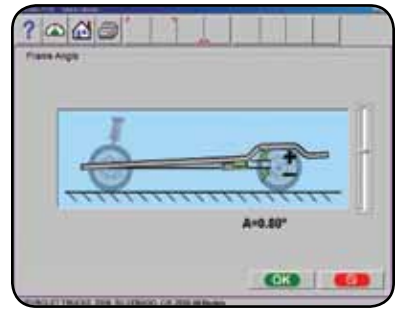
Access and Update Customer Records

- Review and discuss vehicle service history - and up-sell more services - at the right time

Advanced Measurement Capabilities

Ride Height Measurement

- Measure ride height and obtain proper alignment specs for those vehicles requiring it



EZ-Toe*

- Turn the front wheel and access difficult adjustment points without losing contact with the aligner console
- Significantly reduce front toe adjustment times!



3D Images

- View detailed, three-dimensional depictions of needed adjustments and identify the right tools to complete even the most complex tasks



VMI

- Save time by viewing results of runout directly on the pod without stopping or repositioning to look at the monitor



* Patented and/or Patent-Pending Features

Productivity-Enhancing Features

Cordless Lithium Ion Rechargeable Battery

- Lithium Ion battery can go up to a full week without recharging
- Battery display on the pod shows the percentage of charge remaining
- Alerts notify the technician when the pod's battery reaches a certain discharge level
- Electronic components are designed with ultra-low power requirements to maximize battery performance



Hardware That's Built To Last

- Advanced design requires pods at rear wheels only, reducing overall component weight by 50%
- Passive front wheel targets improve durability - no electronics to damage
- Magnesium pods, targets and clamps are durable, impact-resistant & lightweight



Bluetooth-Enabled Wireless Communication

- Perform alignments within 330 feet of the console - even in areas that have high electrical interference - for true portability
- Pods communicate with each other and the console using Bluetooth™ wireless technology

Works In Small Areas

- Perform alignments literally anywhere in your shop!

FEATURES

- A-Arm Adjustments
- Adjust Camber Only
- Adjust Front Before Rear Warning
- Advanced Customer Database with Backup/Restore
- Camber & Toe - Elevated (Frozen Caster)
- Camber & Toe - Turntables (Frozen Caster)
- Caster and SAI on Turntables
- Custom Vehicle Specifications
- Elevated Adjustments
- Equalize Toe Warning
- EZ-Link*
- EZ-Toe*
- FrameCheck™ Light Truck Frame Angle
- Front and Rear Camber (-15° to +15°)
- Front and Rear Toe
- Front Caster (-28° to +28°)
- Front/Rear/All/Zoom Readings
- Individual Camber/Caster/Toe
- Initial/Final Color Printouts
- Integrated Help System (PDF)
- Light Truck Bushing
- Live Caster, Camber and Toe - Elevated
- Live Caster, Camber and Toe - Turntables
- Multiple Clamp Support
- Multiple Lift Support (3)
- Multiple Print Formats
- Multiple Units of Measure
- NorthStar Shim Program
- Rear Shim Programs
- Regional Specifications
- Ride Height*
- SAI and Thrust Angle
- SAI Elevated
- 3D Animation
- Toe Out On Turns/Max Turn
- Tools, Parts, and Adjustment Instructions
- 28 Languages
- 2-Wheel Alignment
- Vehicle Specs: 25+ years
- Video Help



SPECIFICATIONS

Equipment Specifications

- Wheel Size: 13" - 24"
- Tire Diameter: Up to 37"
- Track Width: 48" - 96"
- Wheel Base: 79" - 180"
- Power Requirements: 120/230V, 1Ph, 60Hz

Standard Accessories

- X-Light™ Wheel Clamps: *EAK0289J10A*
- Front L/H & R/H Imaging Targets: *EAK0289J12A*
- Rear L/H & R/H Pods: *EAK0289J43A*
- Steering Wheel Holder: *00055502000*
- Brake Pedal Depressor: *00000096000*
- Color Ink Jet Printer: *EAK0268J05A*

Recommended Accessories

- Premium Turntables: *EAK0289J06A*

Optional Accessories

- Universal Wheel Clamp Ext. Kit: *EAK0268J62A*
- Alloy Quick Clamp Kit: *EAK0268J63A*
- Remote Display Readout: *EAK0268J08A*

* Patented and/or Patent-Pending Features

Snap-on Equipment / 309 Exchange Avenue / Conway, Arkansas 72032 U.S.A.
Fax: 501-450-2085 / Toll Free: 1-800-362-4618 / International: 501-505-2739
www.SnaponEquipment.com

John Bean Canada / 6500 Millcreek Drive / Mississauga, Ontario L5N 2W6
Customer Service: 1-800-362-4608 / Fax: 905-826-7800
www.johnbean.ca

