

# PRISM

## Mobile Wheel Alignment System

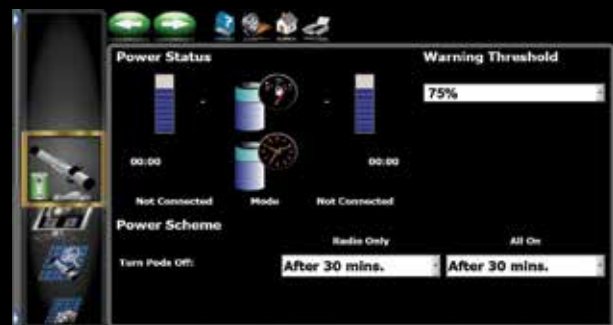


### ADVANCED PRO42 SOFTWARE

- Easy to use interface guides the technician through the alignment process with intuitive graphics
- Rolling runout compensation without jacking the vehicle

### UNMATCHED MOBILITY

- Bluetooth® enabled wireless communication to sensor pods allowing the technician 330 feet (101 meters) of freedom - even in areas known to have high electrical interference - for true mobility
- Magnesium pods, targets and aluminum clamps are durable, impact-resistant and lightweight
- Advanced design requires pods at rear wheels only, reducing overall component weight by 50%



# JohnBean™

# PRODUCT FEATURES & SPECIFICATIONS

## FEATURES

### Pro42 Software

Advanced interface allows the technician to complete a fast and efficient, rolling compensation without jacking the vehicle

### EZ-TOE\*

Turn the front wheels and access difficult adjustment points while still displaying centered toe readings

### Help Videos

View detailed videos of how to make needed adjustments to complete even the most complex tasks

### Battery Notification

Alert notifies the technician when the pod's battery needs to be charged

### Ride Height Measurement\*

Measure ride height and obtain proper alignment specs for those vehicles requiring it

### Manufacturer Specifications

Extensive OEM specs allows quick and accurate vehicle selection

### Customer Records

Review and discuss vehicle service history through accessing and updating customer records

### Customer Reports

Enhance customer satisfaction with personalized reports showing readings before and after service



**EEWA557B**  
John Bean Prism

## SPECIFICATIONS

### Equipment Specifications

- **Wheel size:** 13" - 24" (33cm - 61cm)
- **Tire diameter:** Up to 37" (94cm)
- **Track width:** 48" - 96" (122cm - 244cm)
- **Wheel base:** 79" - 180" (201cm - 457cm)
- **Power requirements:** 120/230V, 1Ph, 50/60Hz

### Standard Accessories

- **X-Light™ Wheel Clamps**
- **Steering Wheel Holder**
- **Brake Pedal Depressor**

### Optional Accessories

- **Premium Turnplates:** EAK0289J06A
- **Universal Wheel Clamp Ext. Kit:** EAK0268J62A
- **Alloy Quick Clamp Kit:** EAK0268J63A



\* Patented and/or Patent-Pending Features

John Bean is committed to product innovation and improvement. Therefore, specifications listed in this brochure may change without notice. © 2013 Snap-on Incorporated. John Bean is a trademark, registered in the United States and other countries, of Snap-on Incorporated. All rights reserved. All other marks are marks of their respective holders.

06/13 SS3039G

For more information regarding the Prism  
Call 800.362.4618 (US) or 800.362.4608 (Canada)

[www.johnbean.com](http://www.johnbean.com)

[www.johnbean.ca](http://www.johnbean.ca)

**JohnBean™**