



Easy-To-Use Alignment Solution



V3D-EL
Imaging Alignment System



V3D-EL

Imaging Alignment System

Fast, Easy-To-Use, Accurate

Utilizing patented imaging technology, the V3D-EL provides accurate, real-time measurements - reducing setup and measurement times while generating serious productivity benefits. Matched with easy-to-use software, the John Bean V3D-EL wheel aligner will have your technicians getting readings in a matter of minutes.

The V3D-EL will enable you to:

- Work at any height, eliminating the need to crawl under the vehicle to perform adjustments†
- Generate more alignment business
- Eliminate Customer Comebacks
- **MAKE MORE MONEY!**



EEWA544AL
Shown with Optional
Variable-Height Camera Support

Productivity-Enhancing Features



Optional VHCS

- Variable-Height Camera Support (EAA0321J19C), shown with standard Camera Beam
- Eliminates the need for fixed-position/level surfaces during alignments
- Positions cameras in range with a touch of a button - even during the alignment process!

VODI™

- Vehicle Orientation Directional Indicator, located on camera beam
- Guides technician through measuring process
- Reduce the amount of time spent walking back and forth from the vehicle to the aligner console



Universal Wheel Clamps

- Handle wheel diameters ranging 13" to 24" standard (up to 28" with optional clamp extensions EAK0268J62A)
- Interchangeable grippers minimize wheel damage

3D Animation

- Provides vehicle-specific adjustment information with easy-to-understand 3D graphics
- Refers to spare parts or special tools as applicable



* Patented and/or Patent Pending Features

† Requires Optional Variable-Height Camera Support (VHCS)

Speed + Accuracy = Profitability!

Less Time to Obtain Readings + Reduced Correction Times =
Faster, More Accurate Alignments!



Eliminate Customer Comebacks



Make Alignment Your Most Profitable Service

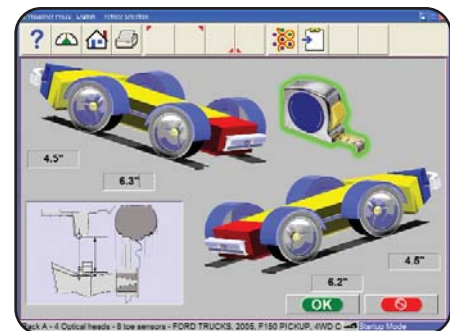
The V3D-EL leverages one of the most advanced imaging alignment systems available. The system creates a live, 3D model of the vehicle and tracks corrections as they happen. The V3D-EL dramatically reduces setup and adjustment times because it is:

- **Ergonomic:** Measures at multiple lift heights.†
- **Adaptable:** Works on non-level surfaces.
- **Easy-to-Use:** Captures targets automatically.
- **Fast:** Shows progress in real-time.

At the end of the day, it always come down to the **money**. By using the V3D-EL, alignment will quickly become your most profitable service. You will also be able to train all of your technicians to perform alignments. Performing more alignments at a lower cost - that boosts your bottom line!

Ride Height Measurement*

Review vehicle specs and request input from the technician for those vehicles requiring ride height measurement



* Patented and/or Patent Pending Features

† Requires Optional Variable-Height Camera Support (VHCS)



V3D-EL Imaging Alignment System

FEATURES

Productivity-Enhancing Features

- Zoom Readings
- Individual Camber
- Individual Toe
- Individual Caster
- Front Caster (-28° to +28°)
- Front & Rear Camber (-15° to +15°)
- Advanced Alignment Measurements with Reading/Specifications and Cross Values
- Meter Screens
- Remote Control (Optional)
- 3D Animation
- Video Help
- A-Arm Adjustments
- Adjust Camber Only
- Elevated Adjustments
- 4-Wheel Steer Adjust
- Rear Shim Programs
- Adjustment Help Files
- EZ-Track Database
- Vehicle Specs: 25+ Years
- EZ-Toe*
- Ride Height*

Measurements

- Front Readings
- Rear Readings
- All Readings
- SAI & Thrust Angle

Productivity-Enhancing Features (Continued...)

- 2-Wheel Alignment
- Thrust Align Only
- 28 Languages
- Multiple Print Formats
- Variable-Height Camera Support Controls
- Custom Vehicle Specifications
- Regional Specifications
- Calibration History
- Aligner System Diagnostics
- Backup/Restore of Calibration and Setup Data
- Integrated Help System (PDF)
- Tools, Parts, and Adjustment Instructions
- Advanced Customer Database with Backup/Restore
- Multiple Units of Measure
- Caster and SAI Turntables
- SAI Elevated
- Live Caster, Camber and Toe – Turntables
- Live Caster, Camber and Toe – Elevated
- NorthStar Shim Program
- Light Truck Bushing

Measurements (Continued...)

- Included Angle
- Toe-Out-On-Turns
- Front and Rear Toe
- FrameCheck™ Light Truck Frame Angle



Also Available in Shelf-Mount Configuration
EEWA541AL
Shown with Optional Fixed-Height Camera
Support Extended and Electronic-Tilt Camera
System (FHCSE/ETCS Kit)

SPECIFICATIONS

Equipment Specifications

- Wheel Size: 13" - 24"
- Tire Diameter: Unlimited
- Track Width: 48" - 96"
- Wheel Base: 79" - 180"
- Power Requirements: 120/230V, 1Ph, 60Hz

Standard Accessories

- Universal Wheel Clamps/Targets: EAK0268J52A
- Steering Wheel Holder: 00055502000
- Brake Pedal Depressor: 00000096000
- Camera Beam: EAA0305J48A
- Color Ink Jet Printer: EAK0268J05A

Optional Accessories

- Universal Wheel Clamp Ext. Kit: EAK0268J62A
- Alloy Quick Clamp Kit: EAK0268J63A
- Frame Angle Gauge: 8-05320A
- Remote Display Readout: EAK0268J08A
- Convex Mirror: P-1826
- Wheel Clamp Floor Stand: EAK0289J71A

Optional Camera Support Configurations

- Fixed-Height Camera Support: EAA0321J01A†
- Variable-Height Camera Support: EAA0321J19C†
- FHCSE/ETCS Kit: EAK0289J79A‡

Recommended Accessories

- Premium Turntables: EAK0289J06A
- Paddle Kit (for EAK0289J06A): EAK0277J28A
- 4-Post Rollback Kit: EAK0277J39A
- 12K Scissor Rollback Kit: EAK0277J40A
- 10K/14K Scissor Rollback Kit: EAK0277J67A
- Hunter/Rotary Rollback Kit: EAK0277J45A
- 12K Scissor Roll Forward/Rollback: EAK0277J47A

Optional Camera Support Configurations (Cont.)

- 8" Wall/Pit Camera Support: EAK0289J63A
- 30" - 60" Wall/Pit Camera Support: EAK0289J36A
- Electronic-Tilt Camera Support: EAK0289J64A

† EEWA544AL Only

‡ EEWA541AL Only

* Patented and/or Patent-Pending Features

Snap-on Equipment / 309 Exchange Avenue / Conway, Arkansas 72032 U.S.A.
Fax: 501-450-2085 / Toll Free: 1-800-362-4618 / International: 501-450-1568
www.SnaponEquipment.com

John Bean Canada / 6500 Millcreek Drive / Mississauga, Ontario L5N 2W6
Customer Service: 1-800-362-4608 / Fax: 905-826-7800
www.johnbean.ca