

# V3D-EL

## Imaging Wheel Alignment System



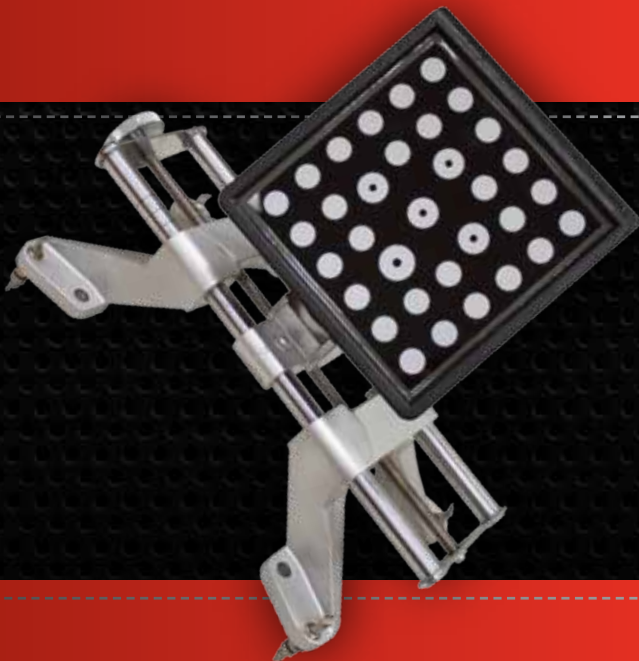
### VERSATILE, ACCURATE HARDWARE

- Digital cameras produce accurate, live alignment readings and diagnostic data
- Passive front and rear targets improve durability with no electronics to damage

### VEHICLE ORIENTATION DIRECTIONAL INDICATOR\* (VODI™)

- Guides the technician through the measuring process
- Reduces the amount of time spent walking back and forth from the vehicle to the aligner

\*Patented and/or Patent-Pending Features



# JohnBean™

# PRODUCT FEATURES & SPECIFICATIONS

## KEY FEATURES

- Optional Fixed, Variable-Height†, Tilt Camera Support
- Help Videos
- Universal Wheel Clamps
- Vehicle Orientation Directional Indicator (VODI™)
- EZ-LINK™ Steering Angle Sensor (SAS) Reset Information
- Live Readings
- Comprehensive Alignment Specification Database
- EZ-TOE\*
- Two or Four Wheel Alignment Capability



**EEWA541AL**  
V3D-EL Shelf Mount Configuration

**EEWA544AL**  
V3D-EL Cabinet Configuration

## Equipment Specifications

- Wheel size: 13" - 24" (33cm - 61cm)
- Tire diameter: Unlimited
- Track width: 48" - 96" (122cm - 244cm)
- Wheel base: 79" - 180" (201cm - 457cm)
- Printer: Included
- Power requirements: 120/230V 1Ph 50/60Hz

## Standard Accessories

- Universal wheel clamps and targets
- Steering wheel holder:
- Brake pedal depressor

## Optional Accessories

- Universal wheel clamp ext. kit: EAK0268J62A
- Alloy quick clamp kit: EAK0268J63A
- Wheel clamp floor stand: EAK0289J71A
- Fixed-height camera support: EAA0321J01A
- Variable-height camera support: EAA0321J19C†
- Electronic tilt camera support kit: EAK0289J79A

\*Patented and/or Patent-Pending Features  
†EEWA544AL Only

John Bean is committed to product innovation and improvement. Therefore, specifications listed in this brochure may change without notice. © 2013 Snap-on Incorporated. John Bean is a trademark of Snap-on Incorporated. All rights reserved. All other marks are marks of their respective holders.

05/13 SS3088H

For more information regarding the V3D-EL  
Call 800.362.4618 (US) or 800.362.4608 (Canada)

[www.johnbean.com](http://www.johnbean.com)

[www.johnbean.ca](http://www.johnbean.ca)

**JohnBean™**