

# RFV2000™

Fully Automated Diagnostic  
Wheel Balancing System



Laser based 3D profiling  
provides automatic  
diagnostic analysis and  
highly accurate wheel  
balance results



# JohnBean™

# RFV2000™ COMBINES HIGH QUALITY WHEEL BALANCING WITH UNMATCHED DIAGNOSTIC CAPABILITIES



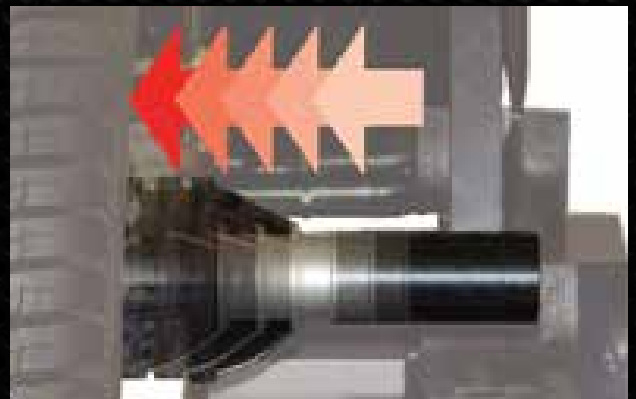
## AUTOMATIC BALANCE MEASUREMENTS

- The color display shows the location of any imbalance and identifies the optimal tape or clip-on weight location
- Automatically measures assembly and rim runout and calculates runout force vectoring for a quick fix match-mounting solution

## AUTOMATIC POWER CLAMP\*

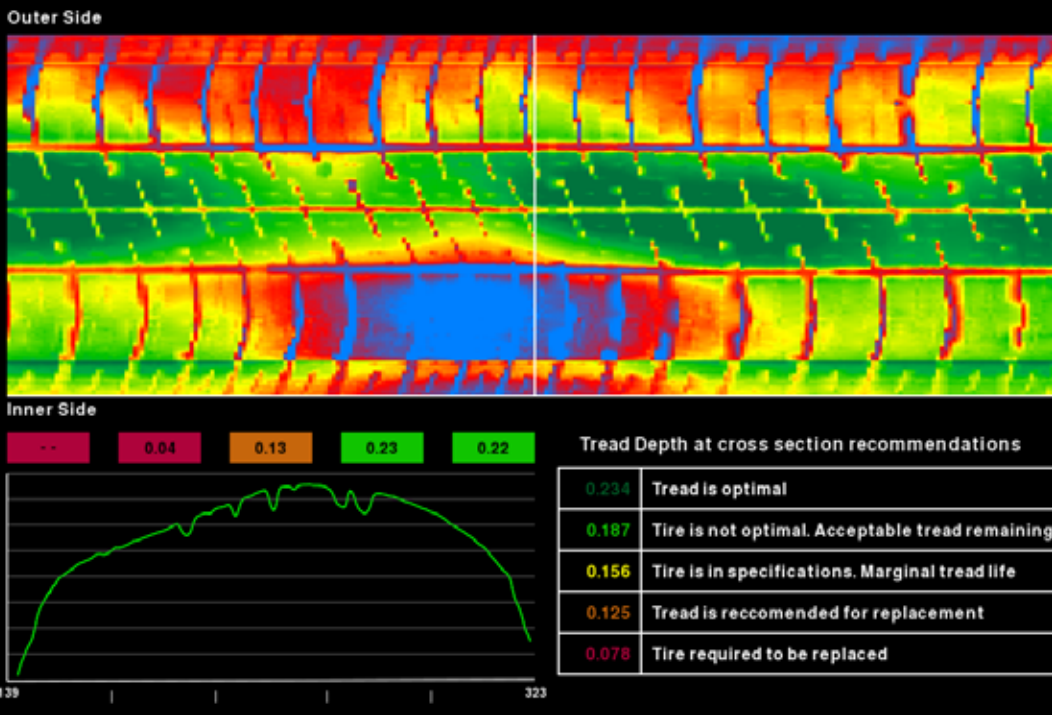
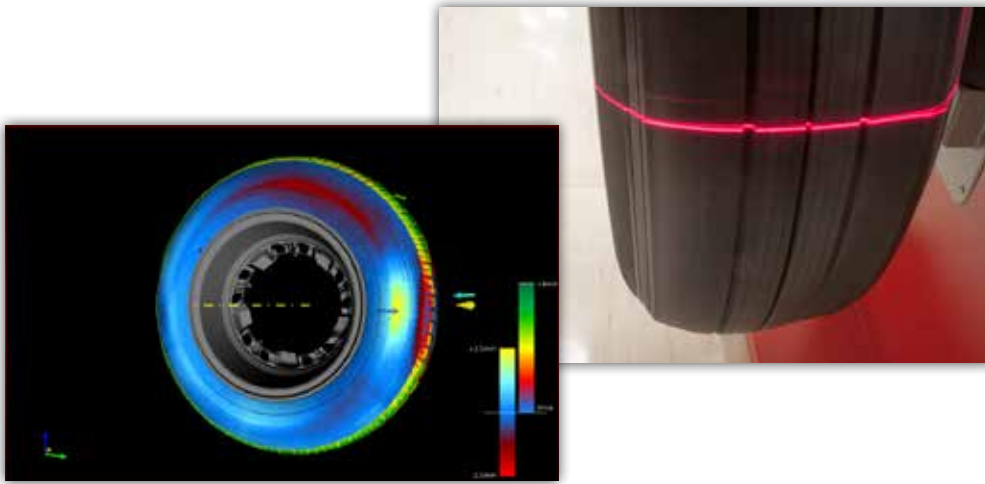
- Electromechanical wheel clamping makes the entire process quick and simple
- Provides a reliable and consistent condition to assure accurate and repeatable measurements

\* Patented and/or Patent-Pending Features



## Error proof results and state-of-the-art analysis provide customer satisfaction

The RFV2000™ is the only fully-automated diagnostic wheel balancer that offers touchless measurement and analysis. Fully automatic inputs remove the chance for error and inaccurate results. When combined with precise wheel balancing, the Runout Force Vectoring (RFV) diagnostics assure uniformity based total ride quality.



### RUNOUT MEASUREMENT

Hundreds of thousands of measurement points are taken with a resolution of 0.004" (0.1mm)

### LASER BASED RUNOUT

Quickly and easily provides advanced geometry related measurements, using technology that surpasses the performance of mechanical roller-based systems

### AUTOMATIC 3D TIRE LASER MAPPING SYSTEM

High resolution camera and laser based topography mapping emulates the same technology used by tire manufacturers in industrial applications. Tire tread and sidewall color analysis allows depth, wear and abnormalities to be displayed in a simple to interpret format

### AUTOMATIC INPUTS

Optical scanners automatically measure the wheel. The scanners recognize the wheel type/edge. Correct weight type and size shown to aid productivity

### AUTOMATIC BEHIND THE SPOKE WEIGHT PLACEMENT

A laser dot shines behind the spoke to indicate the exact weight location

# PRODUCT FEATURES & SPECIFICATIONS

## OPTIONAL ACCESSORIES

- Seven Cone Kit  
EAK0221J31A
- Four Cone Kit  
EAK0221J60A
- Precision 12 Collet Set  
EAK0221J80A
- Precision 4 Pin Plate Set  
EAK0221J50A
- General Purpose Centering Set  
EAK0221J78A
- General Purpose Centering Set  
Storage Stand  
EAK0221J84A
- Storage Stand Only  
EAK2081J30AR (Red)  
EAK2081J30AR (Black)

## OPTIONAL OEM TOOLING KITS

- Acura / Honda: EAK0221J94A
- Audi / Volkswagen: EAK0221J95A
- BMW / Mini: EAK0221J96A
- Chrysler: EAK0221J83A
- General Motors: EAK0221J74A
- Ford / Lincoln / Mercury:  
EAK0221J97A
- Infiniti / Nissan: EAK0221J98A
- Jaguar: EAK0221J99A
- Land Rover: EAK0309J00A
- Lexus / Toyota / Scion:  
EAK0309J01A
- Maybach / Mercedes-Benz:  
EAK0309J02A
- Subaru: EAK0309J03A

## SPECIFICATIONS

### Equipment Specifications

- **Max wheel & tire assembly weight: 154 lbs**
- **Max wheel & tire assembly diameter: 44"**
- **Max wheel & tire assembly width: 20"**
- **Shaft diameter: 40mm**
- **Power clamp: Included**
- **Data Entry: Automatic**
- **Printer: Included**
- **Weight tray pockets: 23**
- **Measuring speed: 200 RPM**
- **Balance accuracy: 0.05oz**
- **Scanner accuracy: 0.004"**
- **Dimensions (DxWxH) 47.5" x 60" x 73"**
- **Shipping Weight: 560 lbs**
- **Power requirements\*:  
230V 1Ph 50/60 Hz**



**EEWB546B**  
John Bean RFV2000™



\* Other power configurations meeting global standards are available

John Bean is committed to product innovation and improvement. Therefore, specifications listed in this brochure may change without notice. © 2014 Snap-on Incorporated. John Bean is a trademark, registered in the United States and other countries, of Snap-on Incorporated. All rights reserved. All other marks are marks of their respective holders.

03/14 SS3259H

For more information regarding the RFV2000™  
Call 800.362.4618 (US) or 800.362.4608 (Canada)

[www.johnbean.com](http://www.johnbean.com)

[www.johnbean.ca](http://www.johnbean.ca)

**JohnBean™**