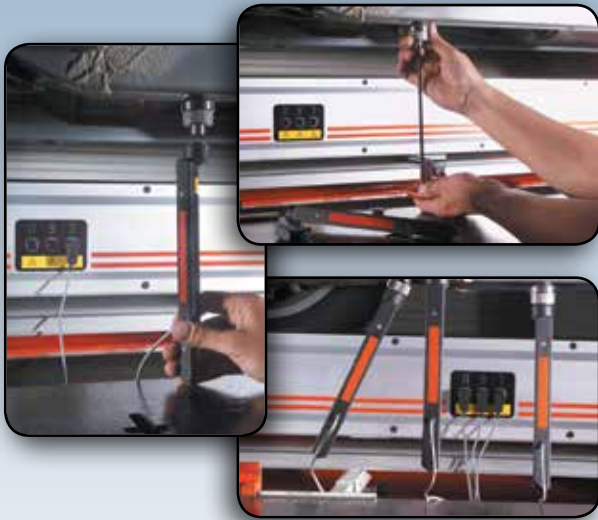


# COMPUTERIZED MEASURING SYSTEM



**Tru-Point™**  
**Sonic 360**  
Computerized Electronic Measuring System

# ADVANCED, EFFICIENT, RELIABLE

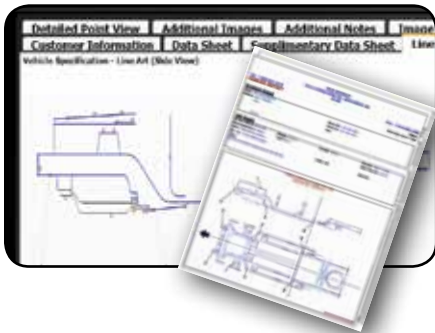
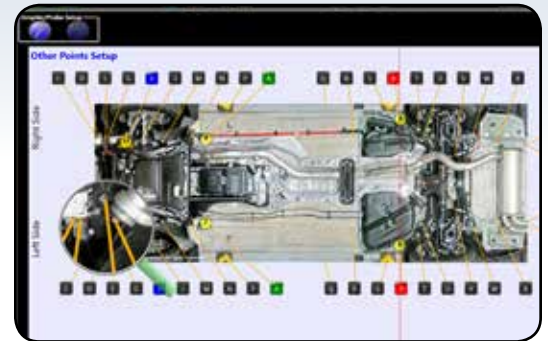


## Award-Winning Ultrasound Technology

The Tru-Point™ Sonic 360 uses ultrasound technology to collect measurements and track your repairs. Emitters on the probes are attached to the vehicle at specific points and send ultrasonic signals that are received by high frequency microphones located in the lightweight extruded aluminum beam. The results are compared to manufacturer specs and any problem areas are identified automatically. This leaves the operator free to concentrate on straightening, not on how to collect measurements.

## Attachment Points View

A technician favorite, our patented user interface with an interactive panoramic image or hybrid combination of image and line art, puts you under the vehicle to navigate during the control point accessory attachment process. The all new magnifying glass function allows you to zoom in the graphics for an increased visual experience in order to make informative decisions during the repair process.

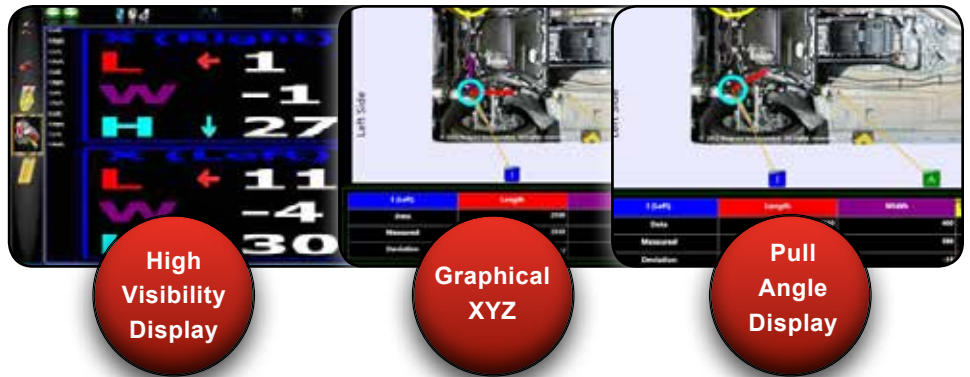


## Live Measurement Display Options

Live measurements enable real time feedback of your pulls, saving time and putting more money in your pocket. Three available display options of these measurements cover every technician's preference. High visibility display lets you focus on only the control points with damage. Graphical XYZ displays length, width and height deviations individually. The pull angle displays the direction of the pull that would be made to correct the damage.

## Custom Reports

Customize reports to meet your shops' and insurance companies' requirements. View and print a quick comparison of the vehicle damage versus its repair, add vehicle damage pictures and repair notes, and build up a damage or repair unit estimate!



High  
Visibility  
Display

Graphical  
XYZ

Pull  
Angle  
Display

# TRU-POINT™ SONIC 360 PROFESSIONAL

## PRODUCTIVITY ENHANCING SOFTWARE



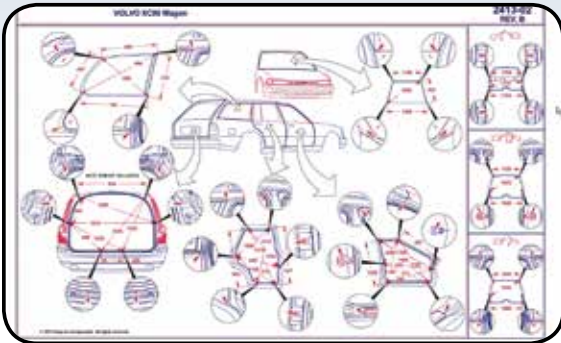
### Optimized Storage

Polyurethane foam inserts with embossed accessory identifiers for storage location of accessories.



### Shop Information

Maintain consistency with OEM specs, view Technical Service Bulletins and access vehicle repair information from OEM's worldwide.



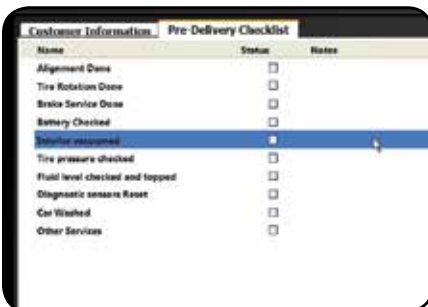
### Vehicle Dimension Data

Onboard access to our Matrix electronic vehicle dimensional point to point specifications on the vehicles window, door and truck openings along with A, B and C pillars



### Point to Point Measuring

Point to Point measuring with color coded results provides damage interpretation.



### Increased Profit Potential

Maximize your profit potential by using the Vehicle Pre-Delivery checklist to offer services beyond collision repair.

### Additional Features

VIN Decoding, On-Screen Job Note Pad, Embedded and Context Sensitive Help Files, Multi-Layered Vehicle Graphics (Allows peeling and see-through functions), and On-Board Log (Tracks system maintenance, inventory audits).

### Accurate, Repeatable, Durable

The *Tru-Point* Sonic 360 is a computerized electronic measuring system that relies on ultrasound technology for dramatic productivity improvements and the industry's best speed and accuracy. The *Tru-Point* Sonic 360 provides live measure-as-you-pull functionality that virtually eliminates costly rework.

# TRU-POINT™ SONIC 360 MODELS & FEATURES



**EECR907C**  
Standard Model

## STANDARD MODEL

### Hardware

- 8 Control Point - Live Active Measuring
- 180° Underhood Measuring Accessory (1 MCP)
- Premium Tool Box Cabinet with Standard Casters with Brakes
- Wide Screen 19" LCD Display
- Beam Wall Storage Brackets
- Frame Rack Measuring Application Brackets
- Standard Cabinet and Beam Cover Kit

### Software

Standard fundamental Windows® program scheme for fast reliable results

### Support

- One Year Warranty
- One Year Vehicle Specifications Subscription with Technical Support Hotline

### Included with the *Tru-Point Sonic 360 Professional*

#### VIN Code Reader

The VIN Scanner allows the technician to scan the Vehicle Identification Number and automatically input it into the *Tru-Point Sonic 360 Professional* software, saving time and eliminating the possibility of operator error.

#### Deluxe Tram Gauge

Use with the upper body opening specifications provided in the professional software.



**EECR907B**  
Professional Model

## PROFESSIONAL MODEL

### Hardware

- 12 Control Point - Live Active Measuring
- 360° Underhood Measuring Accessories (2 MCP's)
- Premium Tool Box Cabinet with Premium Chrome Spoke Casters with Brakes
- Large, Wide Screen 27" LCD Display
- Premium Beam Storage and Mobility Cart
- Frame Rack Measuring Application Brackets
- Premium Cabinet and Beam Cover Kit
- VIN Code Reader
- Deluxe Tram Gauge

### Software

Deluxe User Interface with the following productivity enhancing features:

- VIN Decoding
- Vehicle Image Database
- Point to Point Measuring
- Upper Body Opening Specifications
- Intuitive Help

### Support

- Two Year Warranty
- Two Year Vehicle Specifications Subscription with Technical Support Hotline

