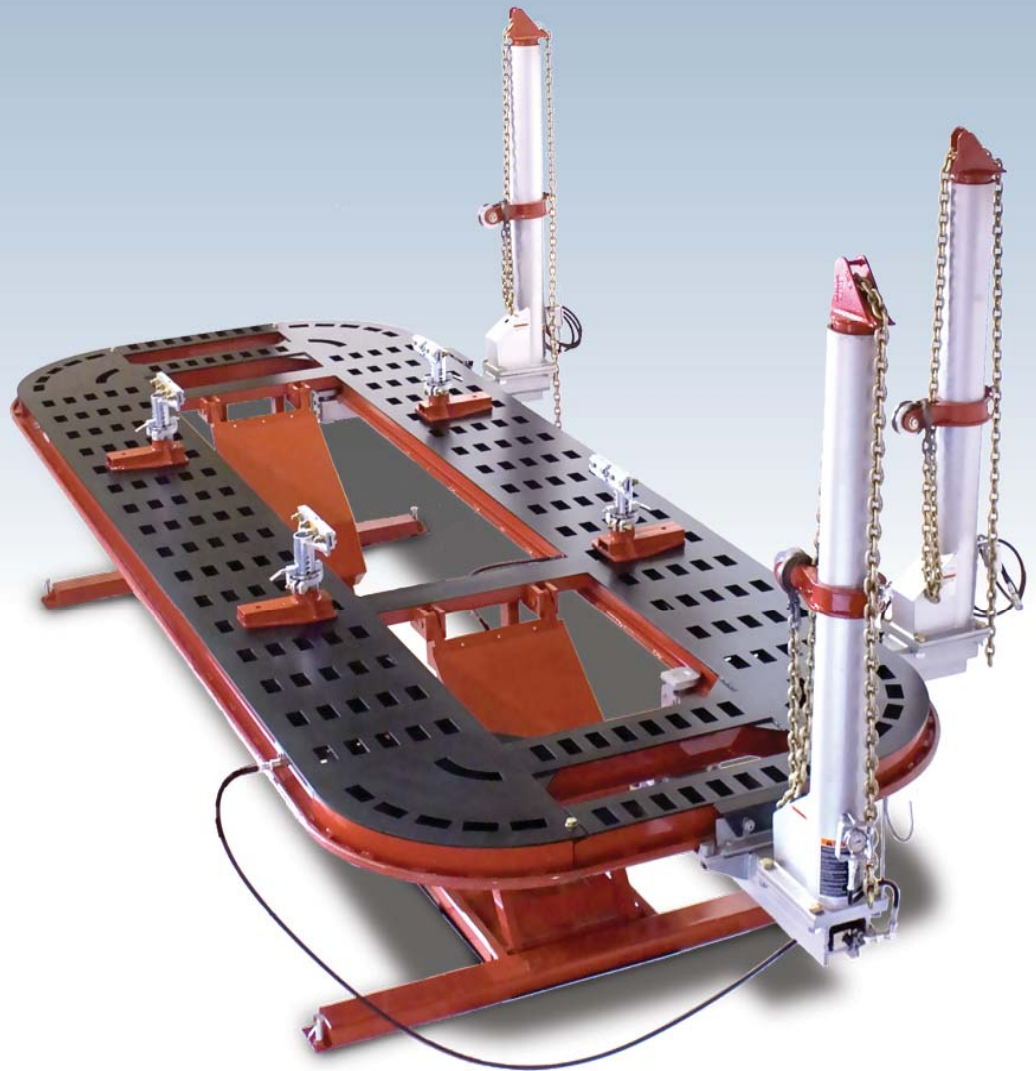


MAGNA RACK SL/SLT SERIES
FRAME RACKS



magna rack SL/SLT

MAGNA RACK SL SERIES SPECIFICATIONS

The Magna Rack SL rack offers features designed specifically for today's collision repair business. To assure maximum productivity, the rack includes an extended-height lifting capability for easier access to the vehicle. The open front and rear improves accessibility to the vehicle for repairs. The Magna Rack SL incorporates a faster pinch-weld anchoring system with fewer bolts to secure it to the rack platform and includes more chain tie-downs for efficient and timely vehicle tie backs.

magna RACK SL



Magna Rack 2.2 SL
3-Tower Configuration
KJ9014223

Specifications

	Magna Rack 2.0 SL	Magna Rack 2.2 SL
Rack Length:	20'	22'
Rack Max. Length (with towers):	24' 1"	26' 1"
Width of Rack:	88"	88"
Width of Rack (with towers):	12' 2"	12' 2"
Width of Treadway:	26 1/2"	26 1/2"
Center Opening Width:	35 1/2"	35 1/2"
Maximum Overall Height (towers down):	9' 1"	9' 1"
Maximum Overall Height (towers extended):	9' 11"	9' 11"
Minimum Overall Height (towers down):	6' 7"	6' 7"
Minimum Overall Height (towers extended):	8' 11"	8' 11"
Tie-Downs:	222	244
8 Working Heights:	12" up to 42"	12" up to 42"
Lifting Capacity:	9,000 lbs	9,000 lbs
Pulling Capacity:	10 ton	10 ton
Power Requirement:	120V, 1Ph, 60Hz	120V, 1Ph, 60Hz

MAGNA RACK SL SERIES FEATURES



Electric-Hydraulic Couplers (SL Only)

Ten quick-connect electric-hydraulic couplers are conveniently located around the rack for efficient tower connections or for auxiliary hydraulic repair accessories. The couplers provide for a positive seal and allow for a safe, clean operating environment for your technicians.

Working Heights (SL Only)

Eight working heights from 12" to 42" provide for one of the lowest working heights in the market. Adjustable working heights provide flexibility in properly positioning the vehicle at an optimum working height for ultimate productivity boosts!



Electric Pump (SL Only)

Elevated off of the ground and placed in a sound-proof metal enclosure with a push-button lock release located on top. Remote easily stores inside the enclosure when not in use.

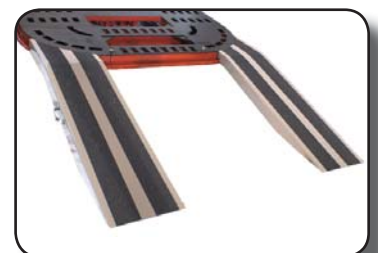


Tower Gauges (SL Only)

Water-filled pressure gauges can be adjusted to provide the technician with the best line of sight when making 10 ton pulls at the hook.

Light-Weight Steel Ramps with Handles (SL Only)

For loading & off-loading the vehicle from the front or rear of the rack.



MAGNA RACK SLT SERIES SPECIFICATIONS

For those customers looking same features and benefits found on the SL series frame rack but in an air tilt version, Kansas Jack Magna Rack SLT series racks will provide the versatility you are looking for.

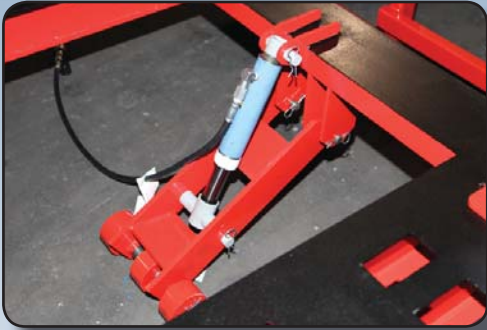
Magna Rack SLT



Specifications

	Magna Rack 2.0 SLT	Magna Rack 2.2 SLT
Rack Length:	20'	22'
Rack Max. Length (with ramps):	21' 6"	23' 6"
Rack Max. Length (with towers and ramps):	24' 4"	26' 4"
Width of Rack:	88"	88"
Width of Rack (with towers):	12' 2"	12' 2"
Width of Treadway:	26 1/2"	26 1/2"
Center Opening Width:	35 1/2"	35 1/2"
Overall Height (towers down):	7' 7"	7' 7"
Overall Height (towers extended):	8' 5"	8' 5"
Tie-Downs:	222	244
Working Height:	22"	22"
Lifting Capacity:	10,000 lbs	10,000 lbs
Pulling Capacity:	10 ton	10 ton
Power Requirement:	AIR	AIR

MAGNA RACK SLT SERIES FEATURES



Lifting Power (SLT Only)

10,000 lbs lifting capacity provides you with more than enough strength to pick up the vehicles you will encounter.



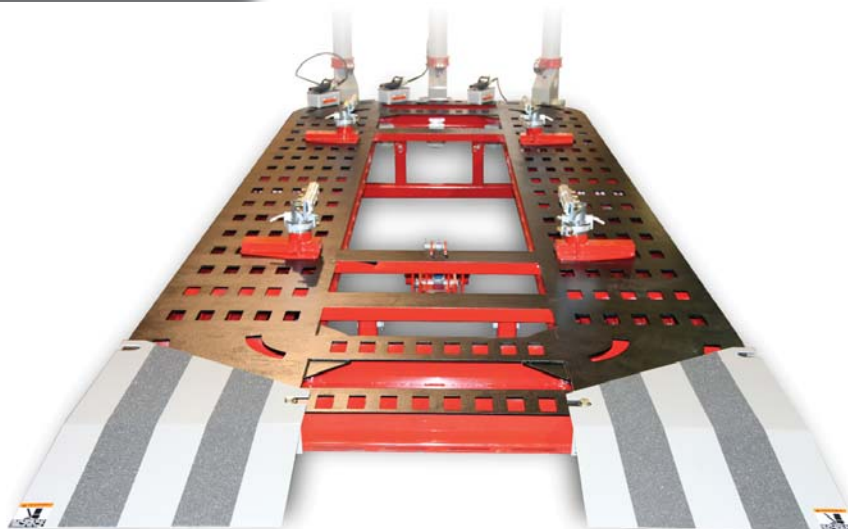
Quick Loading (SLT Only)

The Kansas Jack Magna Rack SLT's removable drive-on ramps coupled with the platform hydraulic tilt feature facilitates easy drive on vehicle loading.



Air Hydraulics Pumps with Guages (SLT Only)

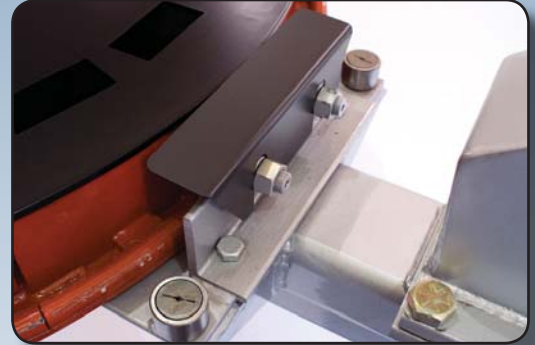
Fluid filled gauges provide for reliable pressure readings at the hook.



MAGNA RACK SL/SLT SERIES FEATURES

Towers with Integrated Bearings

Towers circumnavigate the rack platform on six bearings for a smooth effortless operation.



Infinite Positioning of Pull Collars

Variable-position pull collars provide for unlimited positioning for the correct alignment with the pull being made.



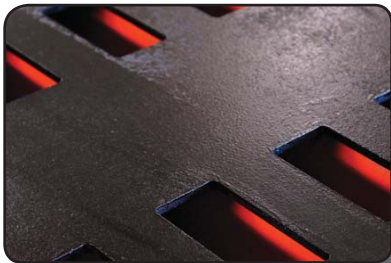
Pinch-Weld Clamp

Pinch-Weld Clamp base secures to the rack with a single bolt reducing your vehicle set-up times.



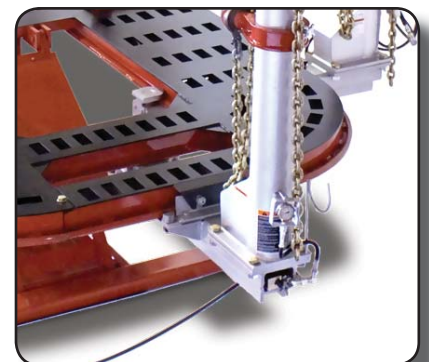
Bed Liner Top Coat

The deck surface is prepared with a bed liner top coat for durability and a non-slip surface.



Front and Rear Removable Cross-Members

Perform a front-end pull removing damage, and then remove the cross-member to gain unrestricted access to the vehicle.



MAGNA RACK SL/SLT SERIES

OPTIONAL ACCESSORIES



Vehicle Loading Package

9020030 (Includes: winch, wheel stands, car dollies, and 2 bag air jack)



Pushing Post with Ram and Pump

9033123



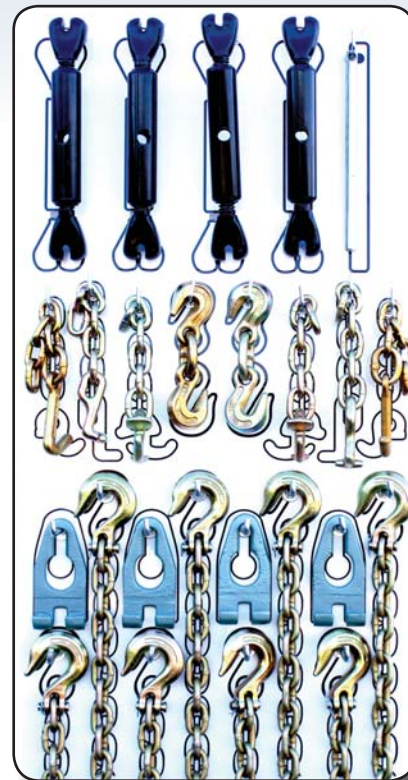
Overhead Pull with Collar

9025050



Light Duty Frame Anchoring

SL59319



Truck Tie-Down Board

9020026 (Includes: 4 chain tightners and helper bar, 2 GM R hooks, 2 Ford T hooks, 2 Chrysler S hooks, 2 double grab hooks, 4 trac hooks, 4 4'x13/32 chains with slip hooks, 4 6'x13/32 chains with slip hooks)



Down Pull

9033160

MAGNA RACK SL/SLT SERIES FRAME RACKS

Light-weight Drive-on/Drive-off Ramps

Provide drive-through capability (SL Only)

From 222 to 244 Tie-Downs

Efficient and timely vehicle tie-back, just drop the chain through deck and secure

Front & Rear Removable Cross-Members

Gain complete access to vehicle for repairs

Front & Rear Wheel Chocks

Prevents forward and backward movement of the vehicle

Quick-Connect Hydraulic Couplers

Allowing for a safe and clean work space

One-Bolt Pinch-Weld Base Clamping

Reduces vehicle setup time

Infinite-Positioning of Pull Collars

For the correct alignment of the pulls

Working Heights (SL Series Only)

Eight working heights from 12" to 42"

Specialty Frame Anchoring Options

For BMW, Mercedes, Honda & frame vehicles

Magna Rack 2.2 SL
3-Tower Configuration
KJ9014223



MAGNA RACK SL

Available Configurations

	Part Number	Number of Towers	Shipping Weight
Magna Rack 2.0 SL	KJ9014202	2	6,200 lbs.
Magna Rack 2.0 SL	KJ9014203	3	6,800 lbs.
Magna Rack 2.0 SL	KJ9014204	4	7,400 lbs.
Magna Rack 2.2 SL	KJ9014222	2	6,620 lbs.
Magna Rack 2.2 SL	KJ9014223	3	7,220 lbs.
Magna Rack 2.2 SL	KJ9014224	4	7,820 lbs.

	Part Number	Number of Towers	Shipping Weight
Magna Rack 2.0 SLT	KJT9014202	2	5,200 lbs.
Magna Rack 2.0 SLT	KJT9014203	3	5,800 lbs.
Magna Rack 2.0 SLT	KJT9014204	4	6,400 lbs.
Magna Rack 2.2 SLT	KJT9014222	2	5,620 lbs.
Magna Rack 2.2 SLT	KJT9014223	3	6,220 lbs.
Magna Rack 2.2 SLT	KJT9014224	4	6,820 lbs.